



Full wwPDB X-ray Structure Validation Report ⓘ

Aug 17, 2016 – 07:44 AM EDT

PDB ID : 5KGP
Title : X-ray structure of a glucosamine N-Acetyltransferase from *Clostridium acetobutylicum* in complex with chitosan
Authors : Dopkins, B.J.; Thoden, J.B.; Tipton, P.A.; Holden, H.M.
Deposited on : 2016-06-13
Resolution : 1.80 Å(reported)

This is a Full wwPDB X-ray Structure Validation Report for a publicly released PDB entry.

We welcome your comments at validation@mail.wwpdb.org

A user guide is available at

<http://wwpdb.org/validation/2016/XrayValidationReportHelp>

with specific help available everywhere you see the ⓘ symbol.

The following versions of software and data (see [references ⓘ](#)) were used in the production of this report:

MolProbity : 4.02b-467
Mogul : 1.7.1 (RC1), CSD as537be (2016)
Xtriage (Phenix) : 1.9-1692
EDS : rb-20027939
Percentile statistics : 20151230.v01 (using entries in the PDB archive December 30th 2015)
Refmac : 5.8.0135
CCP4 : 6.5.0
Ideal geometry (proteins) : Engh & Huber (2001)
Ideal geometry (DNA, RNA) : Parkinson et al. (1996)
Validation Pipeline (wwPDB-VP) : rb-20027939

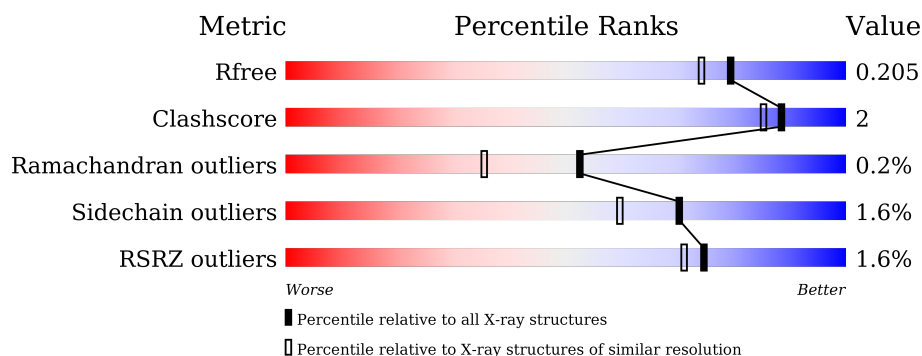
1 Overall quality at a glance

The following experimental techniques were used to determine the structure:

X-RAY DIFFRACTION

The reported resolution of this entry is 1.80 Å.

Percentile scores (ranging between 0-100) for global validation metrics of the entry are shown in the following graphic. The table shows the number of entries on which the scores are based.



Metric	Whole archive (#Entries)	Similar resolution (#Entries, resolution range(Å))
R_{free}	91344	4533 (1.80-1.80)
Clashscore	102246	5383 (1.80-1.80)
Ramachandran outliers	100387	5320 (1.80-1.80)
Sidechain outliers	100360	5319 (1.80-1.80)
RSRZ outliers	91569	4547 (1.80-1.80)

The table below summarises the geometric issues observed across the polymeric chains and their fit to the electron density. The red, orange, yellow and green segments on the lower bar indicate the fraction of residues that contain outliers for ≥ 3 , 2, 1 and 0 types of geometric quality criteria. A grey segment represents the fraction of residues that are not modelled. The numeric value for each fraction is indicated below the corresponding segment, with a dot representing fractions $\leq 5\%$. The upper red bar (where present) indicates the fraction of residues that have poor fit to the electron density. The numeric value is given above the bar.

Mol	Chain	Length	Quality of chain
1	A	328	
1	B	328	

The following table lists non-polymeric compounds, carbohydrate monomers and non-standard residues in protein, DNA, RNA chains that are outliers for geometric or electron-density-fit criteria:

Mol	Type	Chain	Res	Chirality	Geometry	Clashes	Electron density
3	COA	A	402	-	-	-	X
6	GCS	A	407	-	-	-	X
7	MPO	B	403	-	-	-	X

2 Entry composition

There are 8 unique types of molecules in this entry. The entry contains 6014 atoms, of which 0 are hydrogens and 0 are deuteriums.

In the tables below, the ZeroOcc column contains the number of atoms modelled with zero occupancy, the AltConf column contains the number of residues with at least one atom in alternate conformation and the Trace column contains the number of residues modelled with at most 2 atoms.

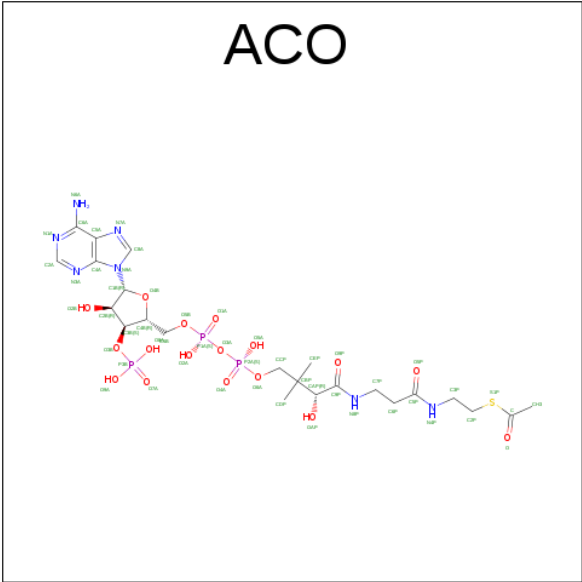
- Molecule 1 is a protein called Predicted acetyltransferase.

Mol	Chain	Residues	Atoms					ZeroOcc	AltConf	Trace
1	A	316	Total	C	N	O	S	0	6	0
			2649	1741	434	464	10			
1	B	316	Total	C	N	O	S	0	2	0
			2609	1712	427	460	10			

There are 16 discrepancies between the modelled and reference sequences:

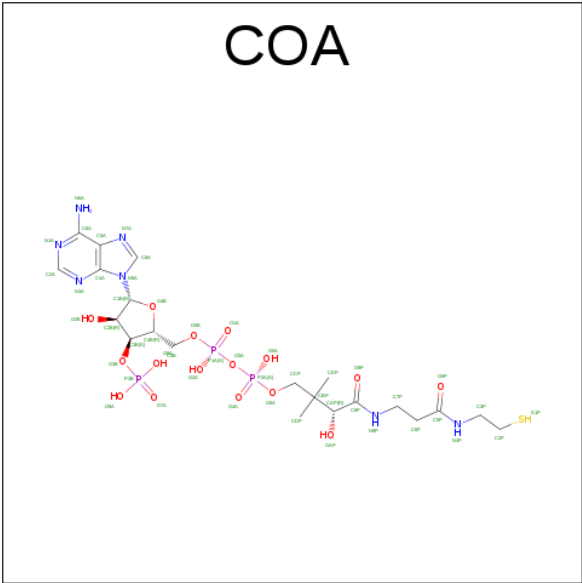
Chain	Residue	Modelled	Actual	Comment	Reference
A	321	GLY	-	expression tag	UNP Q97ML2
A	322	GLY	-	expression tag	UNP Q97ML2
A	323	HIS	-	expression tag	UNP Q97ML2
A	324	HIS	-	expression tag	UNP Q97ML2
A	325	HIS	-	expression tag	UNP Q97ML2
A	326	HIS	-	expression tag	UNP Q97ML2
A	327	HIS	-	expression tag	UNP Q97ML2
A	328	HIS	-	expression tag	UNP Q97ML2
B	321	GLY	-	expression tag	UNP Q97ML2
B	322	GLY	-	expression tag	UNP Q97ML2
B	323	HIS	-	expression tag	UNP Q97ML2
B	324	HIS	-	expression tag	UNP Q97ML2
B	325	HIS	-	expression tag	UNP Q97ML2
B	326	HIS	-	expression tag	UNP Q97ML2
B	327	HIS	-	expression tag	UNP Q97ML2
B	328	HIS	-	expression tag	UNP Q97ML2

- Molecule 2 is ACETYL COENZYME *A (three-letter code: ACO) (formula: C₂₃H₃₈N₇O₁₇P₃S).



Mol	Chain	Residues	Atoms						ZeroOcc	AltConf
2	A	1	Total	C	N	O	P	S	0	0
			51	23	7	17	3	1		
2	B	1	Total	C	N	O	P	S	0	0
			51	23	7	17	3	1		

- Molecule 3 is COENZYME A (three-letter code: COA) (formula: C₂₁H₃₆N₇O₁₆P₃S).



Mol	Chain	Residues	Atoms					ZeroOcc	AltConf
3	A	1	Total	C	N	O	P	0	0
			32	11	5	13	3		
3	A	1	Total	C	N	O	P	0	0
			23	9	2	10	2		

Continued on next page...

Continued from previous page...

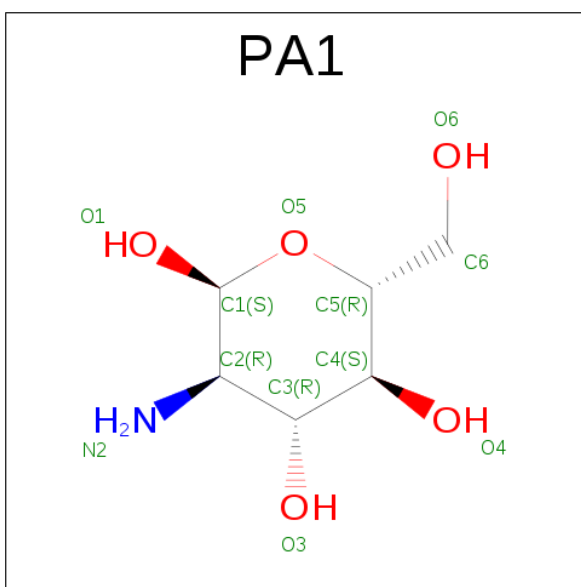
Mol	Chain	Residues	Atoms					ZeroOcc	AltConf
3	B	1	Total	C	N	O	P	0	0
			23	9	2	10	2		

- Molecule 4 is 1,2-ETHANEDIOL (three-letter code: EDO) (formula: $C_2H_6O_2$).



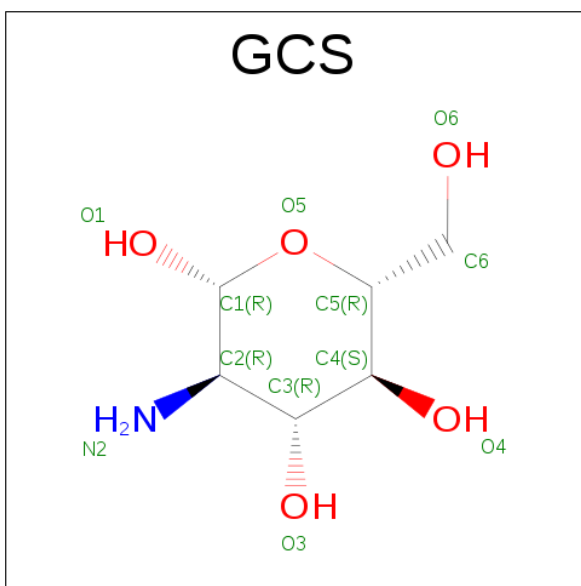
Mol	Chain	Residues	Atoms			ZeroOcc	AltConf
4	A	1	Total	C	O	0	0
			4	2	2		
4	A	1	Total	C	O	0	0
			4	2	2		

- Molecule 5 is 2-amino-2-deoxy-alpha-D-glucopyranose (three-letter code: PA1) (formula: $C_6H_{13}NO_5$).



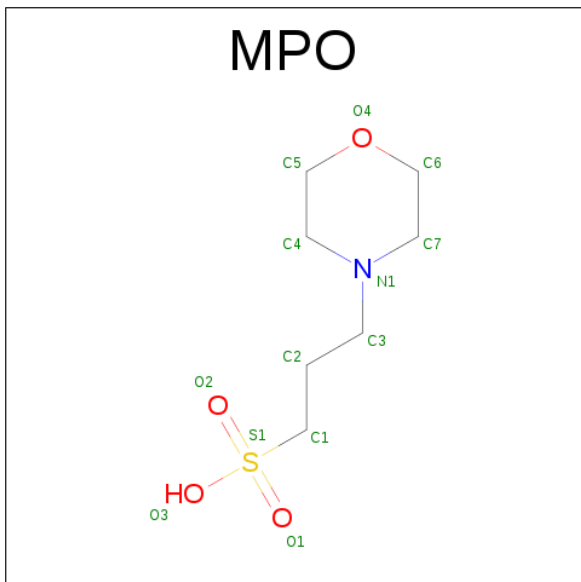
Mol	Chain	Residues	Atoms				ZeroOcc	AltConf
5	A	1	Total	C	N	O	0	0
			12	6	1	5		
5	B	1	Total	C	N	O	0	0
			12	6	1	5		

- Molecule 6 is D-GLUCOSAMINE (three-letter code: GCS) (formula: $C_6H_{13}NO_5$).



Mol	Chain	Residues	Atoms				ZeroOcc	AltConf
6	A	1	Total	C	N	O	0	0
			11	6	1	4		
6	B	1	Total	C	N	O	0	0
			11	6	1	4		

- Molecule 7 is 3[N-MORPHOLINO]PROPANE SULFONIC ACID (three-letter code: MPO) (formula: $C_7H_{15}NO_4S$).



Mol	Chain	Residues	Atoms					ZeroOcc	AltConf
7	B	1	Total	C	N	O	S	0	0
			13	7	1	4	1		

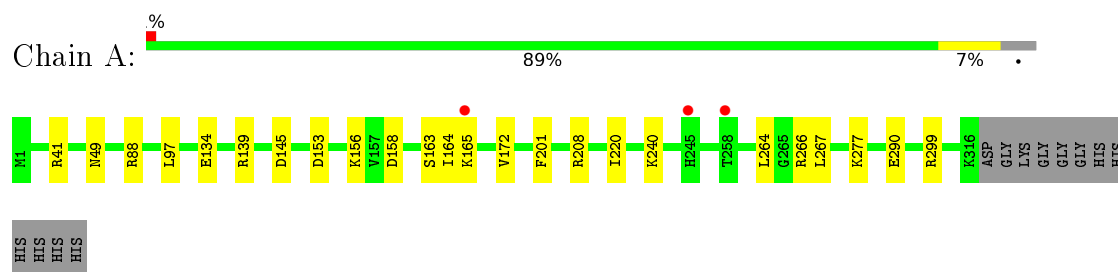
- Molecule 8 is water.

Mol	Chain	Residues	Atoms		ZeroOcc	AltConf
8	A	276	Total	O	0	0
			276	276		
8	B	233	Total	O	0	0
			233	233		

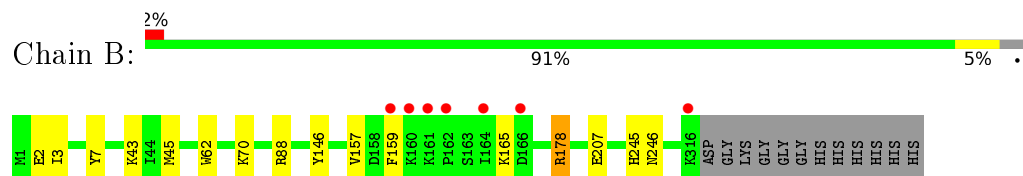
3 Residue-property plots

These plots are drawn for all protein, RNA and DNA chains in the entry. The first graphic for a chain summarises the proportions of errors displayed in the second graphic. The second graphic shows the sequence view annotated by issues in geometry and electron density. Residues are color-coded according to the number of geometric quality criteria for which they contain at least one outlier: green = 0, yellow = 1, orange = 2 and red = 3 or more. A red dot above a residue indicates a poor fit to the electron density ($\text{RSRZ} > 2$). Stretches of 2 or more consecutive residues without any outlier are shown as a green connector. Residues present in the sample, but not in the model, are shown in grey.

- Molecule 1: Predicted acetyltransferase



- Molecule 1: Predicted acetyltransferase



4 Data and refinement statistics

Property	Value	Source
Space group	P 1 21 1	Depositor
Cell constants a, b, c, α , β , γ	63.15Å 65.78Å 90.80Å 90.00° 106.95° 90.00°	Depositor
Resolution (Å)	86.86 – 1.80 29.70 – 1.80	Depositor EDS
% Data completeness (in resolution range)	96.6 (86.86-1.80) 96.6 (29.70-1.80)	Depositor EDS
R_{merge}	0.07	Depositor
R_{sym}	0.07	Depositor
$\langle I/\sigma(I) \rangle$ ¹	1.94 (at 1.80Å)	Xtriage
Refinement program	REFMAC 5.8.0124	Depositor
R, R_{free}	0.157 , 0.198 0.168 , 0.205	Depositor DCC
R_{free} test set	3287 reflections (5.43%)	DCC
Wilson B-factor (Å ²)	14.7	Xtriage
Anisotropy	0.099	Xtriage
Bulk solvent k_{sol} (e/Å ³), B_{sol} (Å ²)	0.36 , 47.2	EDS
L-test for twinning ²	$\langle L \rangle = 0.50$, $\langle L^2 \rangle = 0.33$	Xtriage
Estimated twinning fraction	No twinning to report.	Xtriage
F_o, F_c correlation	0.96	EDS
Total number of atoms	6014	wwPDB-VP
Average B, all atoms (Å ²)	19.0	wwPDB-VP

Xtriage's analysis on translational NCS is as follows: *The largest off-origin peak in the Patterson function is 5.39% of the height of the origin peak. No significant pseudotranslation is detected.*

¹Intensities estimated from amplitudes.

²Theoretical values of $\langle |L| \rangle$, $\langle L^2 \rangle$ for acentric reflections are 0.5, 0.333 respectively for untwinned datasets, and 0.375, 0.2 for perfectly twinned datasets.

5 Model quality [i](#)

5.1 Standard geometry [i](#)

Bond lengths and bond angles in the following residue types are not validated in this section: PA1, MPO, ACO, EDO, COA, GCS

The Z score for a bond length (or angle) is the number of standard deviations the observed value is removed from the expected value. A bond length (or angle) with $|Z| > 5$ is considered an outlier worth inspection. RMSZ is the root-mean-square of all Z scores of the bond lengths (or angles).

Mol	Chain	Bond lengths		Bond angles	
		RMSZ	$\# Z > 5$	RMSZ	$\# Z > 5$
1	A	0.69	0/2735	0.86	2/3674 (0.1%)
1	B	0.68	0/2683	0.85	1/3608 (0.0%)
All	All	0.69	0/5418	0.85	3/7282 (0.0%)

There are no bond length outliers.

All (3) bond angle outliers are listed below:

Mol	Chain	Res	Type	Atoms	Z	Observed(°)	Ideal(°)
1	A	208	ARG	NE-CZ-NH1	-7.46	116.57	120.30
1	B	88	ARG	NE-CZ-NH1	-5.25	117.67	120.30
1	A	88	ARG	NE-CZ-NH2	5.19	122.89	120.30

There are no chirality outliers.

There are no planarity outliers.

5.2 Too-close contacts [i](#)

In the following table, the Non-H and H(model) columns list the number of non-hydrogen atoms and hydrogen atoms in the chain respectively. The H(added) column lists the number of hydrogen atoms added and optimized by MolProbity. The Clashes column lists the number of clashes within the asymmetric unit, whereas Symm-Clashes lists symmetry related clashes.

Mol	Chain	Non-H	H(model)	H(added)	Clashes	Symm-Clashes
1	A	2649	0	2691	14	0
1	B	2609	0	2616	12	0
2	A	51	0	34	0	0
2	B	51	0	34	0	0
3	A	55	0	26	0	0
3	B	23	0	15	0	0

Continued on next page...

Continued from previous page...

Mol	Chain	Non-H	H(model)	H(added)	Clashes	Symm-Clashes
4	A	8	0	12	0	0
5	A	12	0	12	1	0
5	B	12	0	12	0	0
6	A	11	0	11	0	0
6	B	11	0	11	0	0
7	B	13	0	14	2	0
8	A	276	0	0	6	0
8	B	233	0	0	4	0
All	All	6014	0	5488	27	0

The all-atom clashscore is defined as the number of clashes found per 1000 atoms (including hydrogen atoms). The all-atom clashscore for this structure is 2.

All (27) close contacts within the same asymmetric unit are listed below, sorted by their clash magnitude.

Atom-1	Atom-2	Interatomic distance (Å)	Clash overlap (Å)
1:B:3:ILE:HG22	1:B:45:MET:CE	1.98	0.94
1:A:41[B]:ARG:NH1	8:A:502:HOH:O	2.15	0.80
1:A:266:ARG:NH1	8:A:503:HOH:O	2.18	0.76
1:B:3:ILE:HG22	1:B:45:MET:HE2	1.70	0.72
1:A:134:GLU:OE1	8:A:501:HOH:O	2.11	0.68
1:B:43:LYS:HD2	8:B:505:HOH:O	1.97	0.65
1:B:3:ILE:HG22	1:B:45:MET:HE1	1.78	0.64
1:B:3:ILE:CG2	1:B:45:MET:HE2	2.31	0.60
1:A:164:ILE:HD12	1:A:267:LEU:HD22	1.83	0.60
1:B:245:HIS:HD2	1:B:246:ASN:OD1	1.86	0.59
1:B:62:TRP:CD2	7:B:403:MPO:H41	2.38	0.58
1:A:266:ARG:HH12	1:A:299:ARG:HD2	1.69	0.57
1:B:3:ILE:CG2	1:B:45:MET:CE	2.79	0.57
1:B:146:TYR:HD2	8:B:690:HOH:O	1.87	0.56
1:A:158:ASP:OD1	1:A:277:LYS:NZ	2.31	0.56
1:B:178:ARG:NH1	1:B:207:GLU:OE2	2.38	0.55
1:A:164:ILE:HD11	1:A:264:LEU:CD2	2.37	0.54
1:A:290:GLU:OE2	5:A:406:PA1:O6	2.25	0.51
1:B:43:LYS:CD	8:B:505:HOH:O	2.58	0.49
1:A:97:LEU:HD23	1:A:139:ARG:CD	2.45	0.46
1:A:153:ASP:HB3	1:A:156[B]:LYS:HE2	1.99	0.44
1:B:157:VAL:HG11	1:B:159:PHE:CZ	2.52	0.44
1:A:97:LEU:HD12	1:A:97:LEU:HA	1.91	0.42
1:A:49:ASN:HB2	8:A:646:HOH:O	2.19	0.42
7:B:403:MPO:H71	8:B:661:HOH:O	2.20	0.41

Continued on next page...

Continued from previous page...

Atom-1	Atom-2	Interatomic distance (Å)	Clash overlap (Å)
1:A:240:LYS:HE3	8:A:584:HOH:O	2.19	0.41
1:A:172[A]:VAL:HG23	8:A:675:HOH:O	2.20	0.41

There are no symmetry-related clashes.

5.3 Torsion angles [i](#)

5.3.1 Protein backbone [i](#)

In the following table, the Percentiles column shows the percent Ramachandran outliers of the chain as a percentile score with respect to all X-ray entries followed by that with respect to entries of similar resolution.

The Analysed column shows the number of residues for which the backbone conformation was analysed, and the total number of residues.

Mol	Chain	Analysed	Favoured	Allowed	Outliers	Percentiles	
1	A	320/328 (98%)	310 (97%)	9 (3%)	1 (0%)	46	29
1	B	316/328 (96%)	305 (96%)	11 (4%)	0	100	100
All	All	636/656 (97%)	615 (97%)	20 (3%)	1 (0%)	52	35

All (1) Ramachandran outliers are listed below:

Mol	Chain	Res	Type
1	A	165	LYS

5.3.2 Protein sidechains [i](#)

In the following table, the Percentiles column shows the percent sidechain outliers of the chain as a percentile score with respect to all X-ray entries followed by that with respect to entries of similar resolution.

The Analysed column shows the number of residues for which the sidechain conformation was analysed, and the total number of residues.

Mol	Chain	Analysed	Rotameric	Outliers	Percentiles	
1	A	288/291 (99%)	283 (98%)	5 (2%)	68	57
1	B	280/291 (96%)	275 (98%)	5 (2%)	66	54
All	All	568/582 (98%)	558 (98%)	10 (2%)	70	54

All (10) residues with a non-rotameric sidechain are listed below:

Mol	Chain	Res	Type
1	A	145[A]	ASP
1	A	145[B]	ASP
1	A	163	SER
1	A	201	PHE
1	A	220	ILE
1	B	2	GLU
1	B	7	TYR
1	B	70	LYS
1	B	165	LYS
1	B	178	ARG

Some sidechains can be flipped to improve hydrogen bonding and reduce clashes. All (6) such sidechains are listed below:

Mol	Chain	Res	Type
1	A	49	ASN
1	A	73	HIS
1	A	86	ASN
1	A	245	HIS
1	B	144	GLN
1	B	245	HIS

5.3.3 RNA [i](#)

There are no RNA molecules in this entry.

5.4 Non-standard residues in protein, DNA, RNA chains [i](#)

There are no non-standard protein/DNA/RNA residues in this entry.

5.5 Carbohydrates [i](#)

There are no carbohydrates in this entry.

5.6 Ligand geometry [i](#)

12 ligands are modelled in this entry.

In the following table, the Counts columns list the number of bonds (or angles) for which Mogul statistics could be retrieved, the number of bonds (or angles) that are observed in the model and

the number of bonds (or angles) that are defined in the chemical component dictionary. The Link column lists molecule types, if any, to which the group is linked. The Z score for a bond length (or angle) is the number of standard deviations the observed value is removed from the expected value. A bond length (or angle) with $|Z| > 2$ is considered an outlier worth inspection. RMSZ is the root-mean-square of all Z scores of the bond lengths (or angles).

Mol	Type	Chain	Res	Link	Bond lengths			Bond angles		
					Counts	RMSZ	# Z > 2	Counts	RMSZ	# Z > 2
2	ACO	A	401	-	44,53,53	0.94	3 (6%)	54,79,79	1.72	10 (18%)
3	COA	A	402	-	28,34,50	0.91	2 (7%)	34,53,75	2.51	9 (26%)
3	COA	A	403	-	17,22,50	0.68	0	22,33,75	2.05	5 (22%)
4	EDO	A	404	-	3,3,3	0.36	0	2,2,2	0.63	0
4	EDO	A	405	-	3,3,3	0.64	0	2,2,2	0.50	0
5	PA1	A	406	6	12,12,12	0.95	1 (8%)	15,17,17	1.97	3 (20%)
6	GCS	A	407	5	11,11,12	0.64	0	13,15,17	1.19	2 (15%)
2	ACO	B	401	-	44,53,53	0.99	2 (4%)	54,79,79	2.07	9 (16%)
3	COA	B	402	-	17,22,50	0.73	0	22,33,75	2.47	6 (27%)
7	MPO	B	403	-	13,13,13	2.43	2 (15%)	16,17,17	2.08	7 (43%)
5	PA1	B	404	6	12,12,12	1.01	1 (8%)	15,17,17	2.07	2 (13%)
6	GCS	B	405	5	11,11,12	0.67	0	13,15,17	1.46	1 (7%)

In the following table, the Chirals column lists the number of chiral outliers, the number of chiral centers analysed, the number of these observed in the model and the number defined in the chemical component dictionary. Similar counts are reported in the Torsion and Rings columns. '-' means no outliers of that kind were identified.

Mol	Type	Chain	Res	Link	Chirals	Torsions	Rings
2	ACO	A	401	-	-	0/47/67/67	0/3/3/3
3	COA	A	402	-	-	0/20/40/64	0/3/3/3
3	COA	A	403	-	-	0/29/29/64	0/0/0/3
4	EDO	A	404	-	-	0/1/1/1	0/0/0/0
4	EDO	A	405	-	-	0/1/1/1	0/0/0/0
5	PA1	A	406	6	-	0/2/22/22	0/1/1/1
6	GCS	A	407	5	-	0/2/19/22	0/1/1/1
2	ACO	B	401	-	-	0/47/67/67	0/3/3/3
3	COA	B	402	-	-	0/29/29/64	0/0/0/3
7	MPO	B	403	-	-	0/7/15/15	0/1/1/1
5	PA1	B	404	6	-	0/2/22/22	0/1/1/1
6	GCS	B	405	5	-	0/2/19/22	0/1/1/1

All (11) bond length outliers are listed below:

Mol	Chain	Res	Type	Atoms	Z	Observed(Å)	Ideal(Å)
7	B	403	MPO	C1-S1	-5.46	1.69	1.77
5	B	404	PA1	C1-C2	-2.73	1.50	1.53
5	A	406	PA1	C1-C2	-2.67	1.50	1.53
3	A	402	COA	O4B-C1B	2.20	1.44	1.41
2	A	401	ACO	OAP-CAP	2.31	1.46	1.42
2	B	401	ACO	C2A-N3A	2.48	1.36	1.32
2	A	401	ACO	C5A-C4A	2.59	1.46	1.40
2	A	401	ACO	C2A-N3A	2.71	1.36	1.32
3	A	402	COA	C5A-C4A	2.95	1.47	1.40
2	B	401	ACO	O4B-C1B	3.77	1.46	1.41
7	B	403	MPO	O2-S1	6.64	1.64	1.45

All (54) bond angle outliers are listed below:

Mol	Chain	Res	Type	Atoms	Z	Observed(°)	Ideal(°)
2	B	401	ACO	N3A-C2A-N1A	-10.06	120.97	128.87
3	A	402	COA	N3A-C2A-N1A	-9.62	121.31	128.87
2	B	401	ACO	C1B-N9A-C4A	-6.25	119.83	126.81
2	A	401	ACO	N3A-C2A-N1A	-5.65	124.43	128.87
5	A	406	PA1	O3-C3-C2	-5.51	100.39	110.28
2	A	401	ACO	C1B-N9A-C4A	-5.49	120.68	126.81
3	B	402	COA	CEP-CBP-CAP	-5.23	99.63	109.17
3	A	402	COA	C1B-N9A-C4A	-5.04	121.18	126.81
2	A	401	ACO	O2B-C2B-C1B	-3.71	100.00	111.61
2	B	401	ACO	C2P-C3P-N4P	-3.63	105.14	112.43
3	A	402	COA	O8A-P3B-O3B	-3.50	96.15	106.62
3	B	402	COA	CDP-CBP-CAP	-3.30	103.15	109.17
5	B	404	PA1	C1-O5-C5	-3.08	107.64	113.54
3	A	402	COA	O9A-P3B-O3B	-3.01	97.61	106.62
5	A	406	PA1	C1-O5-C5	-2.83	108.12	113.54
2	B	401	ACO	C4B-O4B-C1B	-2.83	106.64	109.64
3	A	403	COA	CDP-CBP-CAP	-2.74	104.18	109.17
7	B	403	MPO	O3-S1-O2	-2.47	105.80	111.26
3	B	402	COA	OAP-CAP-C9P	-2.38	104.86	110.52
7	B	403	MPO	C6-C7-N1	-2.32	106.57	110.11
2	B	401	ACO	P3B-O3B-C3B	-2.24	115.82	121.56
2	A	401	ACO	O3B-P3B-O7A	-2.20	102.23	107.48
2	A	401	ACO	C2B-C3B-C4B	-2.16	99.10	103.25
2	A	401	ACO	C2B-C1B-N9A	-2.05	107.99	113.47
5	A	406	PA1	C3-C2-N2	-2.01	107.11	110.72
3	A	403	COA	O5A-P2A-O3A	2.03	113.96	105.27
6	A	407	GCS	C3-C2-N2	2.11	114.32	110.66
3	B	402	COA	O2A-P1A-O1A	2.17	117.70	110.63

Continued on next page...

Continued from previous page...

Mol	Chain	Res	Type	Atoms	Z	Observed(°)	Ideal(°)
2	A	401	ACO	N6A-C6A-N1A	2.23	122.25	118.52
7	B	403	MPO	O1-S1-C1	2.25	108.46	106.87
2	B	401	ACO	C3P-C2P-S1P	2.26	117.48	111.47
6	A	407	GCS	O4-C4-C5	2.28	115.22	109.23
3	A	402	COA	O2A-P1A-O1A	2.28	124.41	112.56
7	B	403	MPO	C6-O4-C5	2.39	118.04	109.89
2	B	401	ACO	O8A-P3B-O7A	2.49	118.74	110.63
7	B	403	MPO	O3-S1-C1	2.64	110.48	104.99
2	A	401	ACO	CDP-CBP-CCP	2.64	111.93	108.50
2	B	401	ACO	C2A-N1A-C6A	2.71	123.60	118.77
7	B	403	MPO	C5-C4-N1	2.93	114.59	110.11
2	A	401	ACO	O8A-P3B-O7A	2.94	120.21	110.63
2	A	401	ACO	O4B-C1B-N9A	2.98	113.73	108.11
3	A	402	COA	O4B-C1B-N9A	3.09	113.95	108.11
3	A	402	COA	C2A-N1A-C6A	3.14	124.37	118.77
3	A	402	COA	O9A-P3B-O8A	3.21	119.23	107.44
6	B	405	GCS	C1-O5-C5	3.32	117.03	112.14
3	A	403	COA	O2A-P1A-O1A	3.39	121.70	110.63
3	A	402	COA	N6A-C6A-N1A	3.50	124.39	118.52
3	A	403	COA	CEP-CBP-CCP	3.69	113.29	108.50
2	B	401	ACO	N6A-C6A-N1A	4.04	125.29	118.52
7	B	403	MPO	O2-S1-C1	4.81	110.27	106.87
3	B	402	COA	CDP-CBP-CCP	5.11	115.13	108.50
3	B	402	COA	CEP-CBP-CDP	5.85	122.04	109.22
3	A	403	COA	CDP-CBP-CCP	6.23	116.57	108.50
5	B	404	PA1	O5-C1-C2	6.50	115.83	109.47

There are no chirality outliers.

There are no torsion outliers.

There are no ring outliers.

2 monomers are involved in 3 short contacts:

Mol	Chain	Res	Type	Clashes	Symm-Clashes
5	A	406	PA1	1	0
7	B	403	MPO	2	0

5.7 Other polymers ⓘ

There are no such residues in this entry.

5.8 Polymer linkage issues

There are no chain breaks in this entry.

6 Fit of model and data [i](#)

6.1 Protein, DNA and RNA chains [i](#)

In the following table, the column labelled ‘#RSRZ> 2’ contains the number (and percentage) of RSRZ outliers, followed by percent RSRZ outliers for the chain as percentile scores relative to all X-ray entries and entries of similar resolution. The OWAB column contains the minimum, median, 95th percentile and maximum values of the occupancy-weighted average B-factor per residue. The column labelled ‘Q< 0.9’ lists the number of (and percentage) of residues with an average occupancy less than 0.9.

Mol	Chain	Analysed	<RSRZ>	#RSRZ>2	OWAB(Å ²)	Q<0.9
1	A	316/328 (96%)	-0.55	3 (0%) 85 83	8, 15, 33, 52	0
1	B	316/328 (96%)	-0.42	7 (2%) 65 60	8, 17, 41, 65	0
All	All	632/656 (96%)	-0.48	10 (1%) 74 71	8, 16, 36, 65	0

All (10) RSRZ outliers are listed below:

Mol	Chain	Res	Type	RSRZ
1	B	164	ILE	4.3
1	A	165	LYS	3.1
1	B	162	PRO	3.0
1	B	159	PHE	3.0
1	B	166	ASP	2.3
1	B	161	LYS	2.2
1	A	258	THR	2.2
1	A	245	HIS	2.2
1	B	160	LYS	2.1
1	B	316	LYS	2.0

6.2 Non-standard residues in protein, DNA, RNA chains [i](#)

There are no non-standard protein/DNA/RNA residues in this entry.

6.3 Carbohydrates [i](#)

There are no carbohydrates in this entry.

6.4 Ligands [i](#)

In the following table, the Atoms column lists the number of modelled atoms in the group and the number defined in the chemical component dictionary. LLDF column lists the quality of electron density of the group with respect to its neighbouring residues in protein, DNA or RNA chains. The B-factors column lists the minimum, median, 95th percentile and maximum values of B factors of atoms in the group. The column labelled 'Q< 0.9' lists the number of atoms with occupancy less than 0.9.

Mol	Type	Chain	Res	Atoms	RSCC	RSR	LLDF	B-factors(Å ²)	Q<0.9
3	COA	A	402	32/48	0.93	0.19	6.09	20,26,56,59	0
7	MPO	B	403	13/13	0.91	0.15	3.63	29,36,41,47	0
6	GCS	A	407	11/12	0.96	0.11	3.54	9,10,11,11	0
4	EDO	A	405	4/4	0.83	0.10	1.65	40,40,41,41	0
4	EDO	A	404	4/4	0.97	0.09	1.62	18,23,25,27	0
5	PA1	A	406	12/12	0.93	0.09	1.07	15,23,27,27	0
6	GCS	B	405	11/12	0.98	0.10	0.62	8,11,11,12	0
2	ACO	A	401	51/51	0.96	0.09	-0.23	9,13,23,28	0
3	COA	A	403	23/48	0.97	0.07	-0.40	17,21,32,39	0
3	COA	B	402	23/48	0.97	0.08	-0.42	19,24,42,52	0
2	ACO	B	401	51/51	0.97	0.06	-0.64	8,13,18,24	0
5	PA1	B	404	12/12	0.97	0.05	-1.53	14,19,22,23	0

6.5 Other polymers [i](#)

There are no such residues in this entry.