



Full wwPDB X-ray Structure Validation Report ⓘ

Feb 1, 2016 – 06:05 PM GMT

PDB ID : 4KHR
Title : HCV NS5B GT1A C316Y with GSK5852
Authors : Williams, S.P.; Kahler, K.M.; Shotwell, J.B.
Deposited on : 2013-05-01
Resolution : 2.45 Å(reported)

This is a Full wwPDB X-ray Structure Validation Report for a publicly released PDB entry.
We welcome your comments at validation@mail.wwpdb.org
A user guide is available at
<http://wwpdb.org/validation/2016/XrayValidationReportHelp>
with specific help available everywhere you see the ⓘ symbol.

The following versions of software and data (see [references ⓘ](#)) were used in the production of this report:

MolProbity : 4.02b-467
Mogul : 1.7 (RC4), CSD as536be (2015)
Xtriage (Phenix) : 1.9-1692
EDS : rb-20026688
Percentile statistics : 20151230.v01 (using entries in the PDB archive December 30th 2015)
Refmac : 5.8.0135
CCP4 : 6.5.0
Ideal geometry (proteins) : Engh & Huber (2001)
Ideal geometry (DNA, RNA) : Parkinson et al. (1996)
Validation Pipeline (wwPDB-VP) : trunk26865

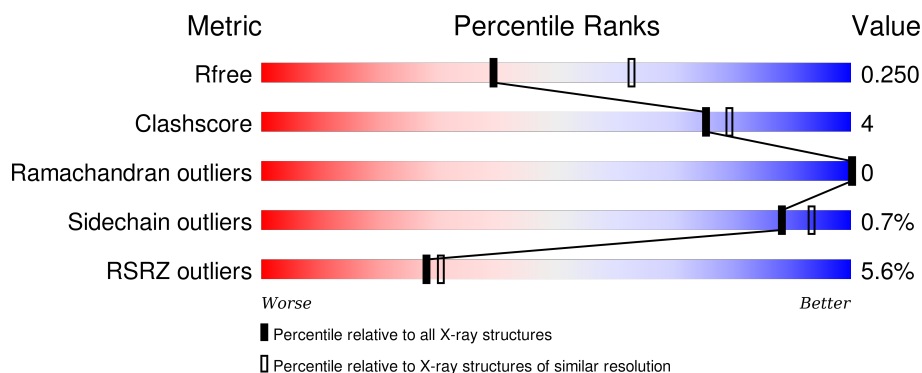
1 Overall quality at a glance

The following experimental techniques were used to determine the structure:

X-RAY DIFFRACTION


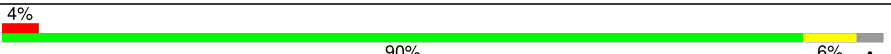
The reported resolution of this entry is 2.45 Å.

Percentile scores (ranging between 0-100) for global validation metrics of the entry are shown in the following graphic. The table shows the number of entries on which the scores are based.



Metric	Whole archive (#Entries)	Similar resolution (#Entries, resolution range(Å))
R_{free}	91344	4776 (2.50-2.42)
Clashscore	102246	1030 (2.48-2.44)
Ramachandran outliers	100387	1024 (2.48-2.44)
Sidechain outliers	100360	1024 (2.48-2.44)
RSRZ outliers	91569	4787 (2.50-2.42)

The table below summarises the geometric issues observed across the polymeric chains and their fit to the electron density. The red, orange, yellow and green segments on the lower bar indicate the fraction of residues that contain outliers for ≥ 3 , 2, 1 and 0 types of geometric quality criteria. A grey segment represents the fraction of residues that are not modelled. The numeric value for each fraction is indicated below the corresponding segment, with a dot representing fractions $\leq 5\%$. The upper red bar (where present) indicates the fraction of residues that have poor fit to the electron density. The numeric value is given above the bar.

Mol	Chain	Length	Quality of chain
1	A	579	
1	B	579	

The following table lists non-polymeric compounds, carbohydrate monomers and non-standard residues in protein, DNA, RNA chains that are outliers for geometric or electron-density-fit criteria:

Mol	Type	Chain	Res	Chirality	Geometry	Clashes	Electron density
2	SO4	A	603	-	-	-	X
2	SO4	B	605	-	-	-	X
2	SO4	B	606	-	-	-	X

2 Entry composition

There are 4 unique types of molecules in this entry. The entry contains 8738 atoms, of which 0 are hydrogens and 0 are deuteriums.

In the tables below, the ZeroOcc column contains the number of atoms modelled with zero occupancy, the AltConf column contains the number of residues with at least one atom in alternate conformation and the Trace column contains the number of residues modelled with at most 2 atoms.

- Molecule 1 is a protein called NS5B RNA-dependent RNA polymerase.

Mol	Chain	Residues	Atoms					ZeroOcc	AltConf	Trace
1	A	562	Total	C	N	O	S	0	0	0
			4291	2708	761	792	30			
1	B	562	Total	C	N	O	S	0	0	0
			4257	2688	746	793	30			

There are 34 discrepancies between the modelled and reference sequences:

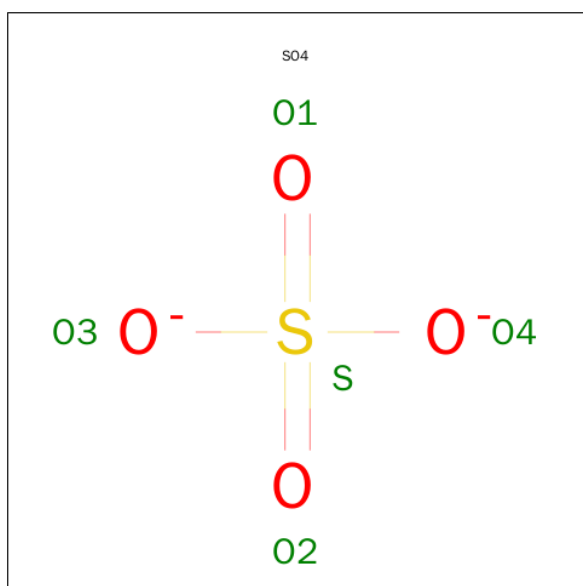
Chain	Residue	Modelled	Actual	Comment	Reference
A	0	MET	-	EXPRESSION TAG	UNP B1PPP0
A	5	SER	THR	VARIANT	UNP B1PPP0
A	11	VAL	ILE	VARIANT	UNP B1PPP0
A	101	TYR	PHE	ENGINEERED MUTATION	UNP B1PPP0
A	110	SER	CYS	ENGINEERED MUTATION	UNP B1PPP0
A	113	SER	ARG	ENGINEERED MUTATION	UNP B1PPP0
A	114	ARG	LYS	ENGINEERED MUTATION	UNP B1PPP0
A	316	TYR	CYS	ENGINEERED MUTATION	UNP B1PPP0
A	546	ALA	ASP	VARIANT	UNP B1PPP0
A	571	LEU	-	EXPRESSION TAG	UNP B1PPP0
A	572	GLU	-	EXPRESSION TAG	UNP B1PPP0
A	573	HIS	-	EXPRESSION TAG	UNP B1PPP0
A	574	HIS	-	EXPRESSION TAG	UNP B1PPP0
A	575	HIS	-	EXPRESSION TAG	UNP B1PPP0
A	576	HIS	-	EXPRESSION TAG	UNP B1PPP0
A	577	HIS	-	EXPRESSION TAG	UNP B1PPP0
A	578	HIS	-	EXPRESSION TAG	UNP B1PPP0
B	0	MET	-	EXPRESSION TAG	UNP B1PPP0
B	5	SER	THR	VARIANT	UNP B1PPP0
B	11	VAL	ILE	VARIANT	UNP B1PPP0
B	101	TYR	PHE	ENGINEERED MUTATION	UNP B1PPP0
B	110	SER	CYS	ENGINEERED MUTATION	UNP B1PPP0
B	113	SER	ARG	ENGINEERED MUTATION	UNP B1PPP0
B	114	ARG	LYS	ENGINEERED MUTATION	UNP B1PPP0
B	316	TYR	CYS	ENGINEERED MUTATION	UNP B1PPP0

Continued on next page...

Continued from previous page...

Chain	Residue	Modelled	Actual	Comment	Reference
B	546	ALA	ASP	VARIANT	UNP B1PPP0
B	571	LEU	-	EXPRESSION TAG	UNP B1PPP0
B	572	GLU	-	EXPRESSION TAG	UNP B1PPP0
B	573	HIS	-	EXPRESSION TAG	UNP B1PPP0
B	574	HIS	-	EXPRESSION TAG	UNP B1PPP0
B	575	HIS	-	EXPRESSION TAG	UNP B1PPP0
B	576	HIS	-	EXPRESSION TAG	UNP B1PPP0
B	577	HIS	-	EXPRESSION TAG	UNP B1PPP0
B	578	HIS	-	EXPRESSION TAG	UNP B1PPP0

- Molecule 2 is SULFATE ION (three-letter code: SO₄) (formula: O₄S).



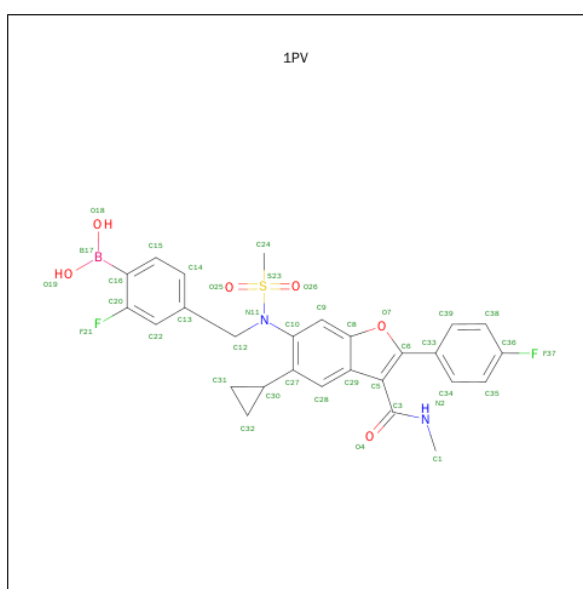
Mol	Chain	Residues	Atoms			ZeroOcc	AltConf
2	A	1	Total	O	S	0	0
			5	4	1		
2	A	1	Total	O	S	0	0
			5	4	1		
2	A	1	Total	O	S	0	0
			5	4	1		
2	B	1	Total	O	S	0	0
			5	4	1		
2	B	1	Total	O	S	0	0
			5	4	1		
2	B	1	Total	O	S	0	0
			5	4	1		

Continued on next page...

Continued from previous page...

Mol	Chain	Residues	Atoms			ZeroOcc	AltConf
2	B	1	Total	O	S	0	0
			5	4	1		
2	B	1	Total	O	S	0	0
			5	4	1		
2	B	1	Total	O	S	0	0
			5	4	1		

- Molecule 3 is [4-({[5-CYCLOPROPYL-2-(4-FLUOROPHENYL)-3-(METHYLCARBAMOYL)-1-BENZOFURAN-6-YL](METHYLSULFONYL)AMINO}METHYL)-2-FLUOROPHENYL]BORONIC ACID (three-letter code: 1PV) (formula: C₂₇H₂₅BF₂N₂O₆S).



Mol	Chain	Residues	Atoms							ZeroOcc	AltConf
3	A	1	Total	B	C	F	N	O	S	0	0
			39	1	27	2	2	6	1		

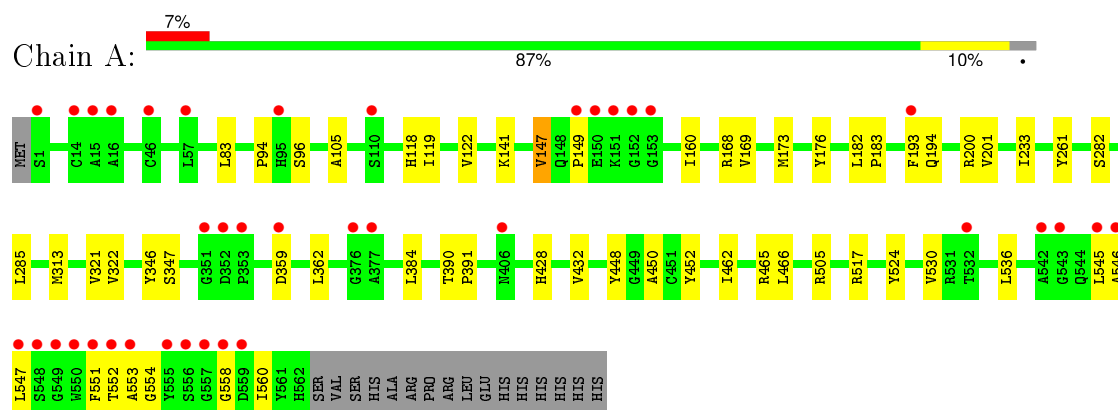
- Molecule 4 is water.

Mol	Chain	Residues	Atoms		ZeroOcc	AltConf
4	A	51	Total	O	0	0
			51	51		
4	B	50	Total	O	0	0
			50	50		

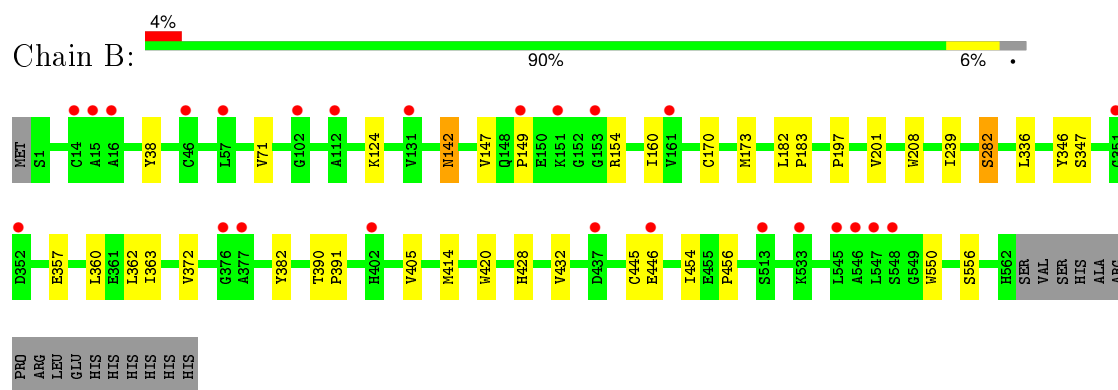
3 Residue-property plots [i](#)

These plots are drawn for all protein, RNA and DNA chains in the entry. The first graphic for a chain summarises the proportions of errors displayed in the second graphic. The second graphic shows the sequence view annotated by issues in geometry and electron density. Residues are color-coded according to the number of geometric quality criteria for which they contain at least one outlier: green = 0, yellow = 1, orange = 2 and red = 3 or more. A red dot above a residue indicates a poor fit to the electron density ($RSRZ > 2$). Stretches of 2 or more consecutive residues without any outlier are shown as a green connector. Residues present in the sample, but not in the model, are shown in grey.

- Molecule 1: NS5B RNA-dependent RNA polymerase



- Molecule 1: NS5B RNA-dependent RNA polymerase



4 Data and refinement statistics

Property	Value	Source
Space group	P 1	Depositor
Cell constants a, b, c, α , β , γ	53.35Å 60.74Å 91.98Å 89.32° 86.64° 80.32°	Depositor
Resolution (Å)	29.94 – 2.45 29.15 – 2.45	Depositor EDS
% Data completeness (in resolution range)	98.5 (29.94-2.45) 98.5 (29.15-2.45)	Depositor EDS
R_{merge}	0.15	Depositor
R_{sym}	(Not available)	Depositor
$\langle I/\sigma(I) \rangle$ ¹	2.78 (at 2.45Å)	Xtriage
Refinement program	REFMAC 5.6.0117	Depositor
R, R_{free}	0.208 , 0.246 0.211 , 0.250	Depositor DCC
R_{free} test set	2945 reflections (7.71%)	DCC
Wilson B-factor (Å ²)	24.1	Xtriage
Anisotropy	0.039	Xtriage
Bulk solvent k_{sol} (e/Å ³), B_{sol} (Å ²)	0.38 , 30.8	EDS
Estimated twinning fraction	No twinning to report.	Xtriage
L-test for twinning ²	$\langle L \rangle = 0.50$, $\langle L^2 \rangle = 0.33$	Xtriage
Outliers	0 of 41141 reflections	Xtriage
F_o, F_c correlation	0.92	EDS
Total number of atoms	8738	wwPDB-VP
Average B, all atoms (Å ²)	24.0	wwPDB-VP

Xtriage's analysis on translational NCS is as follows: *The largest off-origin peak in the Patterson function is 5.41% of the height of the origin peak. No significant pseudotranslation is detected.*

¹Intensities estimated from amplitudes.

²Theoretical values of $\langle |L| \rangle$, $\langle L^2 \rangle$ for acentric reflections are 0.5, 0.375 respectively for untwinned datasets, and 0.333, 0.2 for perfectly twinned datasets.

5 Model quality [i](#)

5.1 Standard geometry [i](#)

Bond lengths and bond angles in the following residue types are not validated in this section: 1PV, SO4

The Z score for a bond length (or angle) is the number of standard deviations the observed value is removed from the expected value. A bond length (or angle) with $|Z| > 5$ is considered an outlier worth inspection. RMSZ is the root-mean-square of all Z scores of the bond lengths (or angles).

Mol	Chain	Bond lengths		Bond angles	
		RMSZ	$\# Z > 5$	RMSZ	$\# Z > 5$
1	A	0.54	0/4387	0.64	0/5966
1	B	0.54	2/4354 (0.0%)	0.61	0/5930
All	All	0.54	2/8741 (0.0%)	0.63	0/11896

All (2) bond length outliers are listed below:

Mol	Chain	Res	Type	Atoms	Z	Observed(Å)	Ideal(Å)
1	B	550	TRP	CD2-CE2	5.11	1.47	1.41
1	B	420	TRP	CD2-CE2	5.01	1.47	1.41

There are no bond angle outliers.

There are no chirality outliers.

There are no planarity outliers.

5.2 Too-close contacts [i](#)

In the following table, the Non-H and H(model) columns list the number of non-hydrogen atoms and hydrogen atoms in the chain respectively. The H(added) column lists the number of hydrogen atoms added and optimized by MolProbity. The Clashes column lists the number of clashes within the asymmetric unit, whereas Symm-Clashes lists symmetry related clashes.

Mol	Chain	Non-H	H(model)	H(added)	Clashes	Symm-Clashes
1	A	4291	0	4246	43	0
1	B	4257	0	4166	24	0
2	A	15	0	0	1	0
2	B	35	0	0	0	0
3	A	39	0	25	1	0
4	A	51	0	0	0	0
4	B	50	0	0	1	0

Continued on next page...

Continued from previous page...

Mol	Chain	Non-H	H(model)	H(added)	Clashes	Symm-Clashes
All	All	8738	0	8437	67	0

The all-atom clashscore is defined as the number of clashes found per 1000 atoms (including hydrogen atoms). The all-atom clashscore for this structure is 4.

All (67) close contacts within the same asymmetric unit are listed below, sorted by their clash magnitude.

Atom-1	Atom-2	Interatomic distance (Å)	Clash overlap (Å)
1:B:160:ILE:HD12	1:B:282:SER:HB2	1.55	0.86
1:A:193:PHE:HE2	1:A:552:THR:C	1.82	0.83
1:B:208:TRP:CZ3	1:B:363:ILE:HD11	2.18	0.79
1:A:193:PHE:CD1	1:A:448:TYR:HD2	2.03	0.76
1:A:193:PHE:HE2	1:A:553:ALA:N	1.87	0.73
1:B:208:TRP:CZ3	1:B:363:ILE:CD1	2.74	0.70
1:B:170:CYS:HA	1:B:173:MET:HE3	1.73	0.70
1:A:193:PHE:CE1	1:A:448:TYR:HD2	2.11	0.69
1:A:141:LYS:HG3	1:A:160:ILE:CG2	2.24	0.68
1:B:445:CYS:SG	1:B:454:ILE:HD12	2.32	0.68
1:A:141:LYS:HG3	1:A:160:ILE:HG23	1.76	0.67
1:A:193:PHE:CE2	1:A:552:THR:C	2.68	0.66
1:A:193:PHE:CZ	1:A:554:GLY:N	2.66	0.63
1:B:147:VAL:HG23	1:B:149:PRO:HD3	1.80	0.62
1:A:193:PHE:CD1	1:A:448:TYR:CD2	2.86	0.61
1:A:193:PHE:HE1	1:A:448:TYR:HB2	1.68	0.58
1:A:313:MET:HG2	1:A:322:VAL:HG22	1.85	0.58
1:B:428:HIS:O	1:B:432:VAL:HG23	2.04	0.57
1:B:346:TYR:O	1:B:347:SER:HB3	2.04	0.56
1:A:193:PHE:CE1	1:A:448:TYR:CD2	2.94	0.56
1:A:119:ILE:HD13	1:A:169:VAL:HG11	1.87	0.56
1:A:462:ILE:O	1:A:466:LEU:HG	2.06	0.56
1:A:96:SER:OG	1:A:168:ARG:NH2	2.40	0.55
1:A:346:TYR:O	1:A:347:SER:HB3	2.08	0.54
1:B:208:TRP:CH2	1:B:363:ILE:HD11	2.43	0.54
1:A:193:PHE:CE2	1:A:553:ALA:N	2.73	0.54
1:A:201:VAL:HG22	1:A:384:LEU:HG	1.90	0.53
1:B:182:LEU:HB3	1:B:183:PRO:HD3	1.92	0.52
1:A:182:LEU:HB3	1:A:183:PRO:HD3	1.92	0.52
1:A:193:PHE:HE1	1:A:448:TYR:CB	2.25	0.50
1:A:285:LEU:HA	1:A:558:GLY:HA2	1.94	0.49
1:B:142:ASN:N	1:B:142:ASN:HD22	2.10	0.49
1:B:38:TYR:CE2	1:B:154:ARG:HB3	2.48	0.48

Continued on next page...

Continued from previous page...

Atom-1	Atom-2	Interatomic distance (Å)	Clash overlap (Å)
1:A:147:VAL:HG13	1:A:149:PRO:HD3	1.95	0.48
1:B:360:LEU:HA	1:B:363:ILE:HD12	1.96	0.48
1:A:524:TYR:CD2	1:A:536:LEU:HD22	2.48	0.47
1:A:83:LEU:HB2	1:A:173:MET:HA	1.98	0.46
1:B:405:VAL:HG11	1:B:446:GLU:HG3	1.97	0.46
1:A:233:ILE:HD13	1:A:261:TYR:O	2.16	0.46
1:A:428:HIS:O	1:A:432:VAL:HG23	2.17	0.45
1:A:321:VAL:HG21	3:A:604:1PV:C35	2.47	0.45
1:B:208:TRP:CZ3	1:B:363:ILE:HD13	2.52	0.44
1:A:200:ARG:HD2	1:A:384:LEU:HD11	1.98	0.44
1:A:450:ALA:HB3	1:A:452:TYR:CE1	2.53	0.44
1:A:359:ASP:HB3	1:A:362:LEU:HD12	1.99	0.44
1:A:517:ARG:NE	2:A:602:SO4:O4	2.42	0.43
1:A:141:LYS:HG3	1:A:160:ILE:HG21	1.98	0.43
1:A:465:ARG:NH2	1:A:545:LEU:O	2.46	0.43
1:B:357:GLU:OE2	1:B:362:LEU:HD13	2.17	0.43
1:B:336:LEU:HD12	1:B:336:LEU:HA	1.85	0.43
1:A:193:PHE:CE1	1:A:554:GLY:HA3	2.54	0.43
1:A:194:GLN:HA	1:A:551:PHE:O	2.18	0.43
1:B:38:TYR:CZ	1:B:154:ARG:HB3	2.54	0.43
1:A:546:ALA:C	1:A:547:LEU:HD23	2.39	0.43
1:B:71:VAL:HG11	1:B:239:ILE:HD13	2.01	0.42
1:A:193:PHE:CE1	1:A:448:TYR:CB	3.02	0.42
1:A:390:THR:HB	1:A:391:PRO:HD3	2.01	0.42
1:B:456:PRO:HD2	4:B:716:HOH:O	2.18	0.42
1:A:118:HIS:O	1:A:122:VAL:HG23	2.19	0.42
1:A:176:TYR:HE1	1:A:560:ILE:HD12	1.85	0.41
1:B:197:PRO:HG3	1:B:414:MET:SD	2.60	0.41
1:A:94:PRO:O	1:A:105:ALA:HB3	2.20	0.41
1:B:197:PRO:O	1:B:201:VAL:HG23	2.19	0.41
1:B:390:THR:HB	1:B:391:PRO:HD3	2.03	0.41
1:A:505:ARG:NH1	1:A:530:VAL:HG12	2.36	0.40
1:A:141:LYS:HE3	1:A:160:ILE:CG2	2.51	0.40
1:B:372:VAL:HG22	1:B:382:TYR:CD1	2.57	0.40

There are no symmetry-related clashes.

5.3 Torsion angles

5.3.1 Protein backbone

In the following table, the Percentiles column shows the percent Ramachandran outliers of the chain as a percentile score with respect to all X-ray entries followed by that with respect to entries of similar resolution.

The Analysed column shows the number of residues for which the backbone conformation was analysed, and the total number of residues.

Mol	Chain	Analysed	Favoured	Allowed	Outliers	Percentiles	
1	A	560/579 (97%)	556 (99%)	4 (1%)	0	100	100
1	B	560/579 (97%)	555 (99%)	5 (1%)	0	100	100
All	All	1120/1158 (97%)	1111 (99%)	9 (1%)	0	100	100

There are no Ramachandran outliers to report.

5.3.2 Protein sidechains

In the following table, the Percentiles column shows the percent sidechain outliers of the chain as a percentile score with respect to all X-ray entries followed by that with respect to entries of similar resolution.

The Analysed column shows the number of residues for which the sidechain conformation was analysed, and the total number of residues.

Mol	Chain	Analysed	Rotameric	Outliers	Percentiles	
1	A	451/483 (93%)	449 (100%)	2 (0%)	93	96
1	B	444/483 (92%)	440 (99%)	4 (1%)	84	91
All	All	895/966 (93%)	889 (99%)	6 (1%)	88	93

All (6) residues with a non-rotameric sidechain are listed below:

Mol	Chain	Res	Type
1	A	147	VAL
1	A	282	SER
1	B	124	LYS
1	B	142	ASN
1	B	282	SER
1	B	556	SER

Some sidechains can be flipped to improve hydrogen bonding and reduce clashes. All (6) such

sidechains are listed below:

Mol	Chain	Res	Type
1	A	35	ASN
1	A	95	HIS
1	A	441	GLN
1	B	35	ASN
1	B	118	HIS
1	B	438	GLN

5.3.3 RNA [i](#)

There are no RNA molecules in this entry.

5.4 Non-standard residues in protein, DNA, RNA chains [i](#)

There are no non-standard protein/DNA/RNA residues in this entry.

5.5 Carbohydrates [i](#)

There are no carbohydrates in this entry.

5.6 Ligand geometry [i](#)

11 ligands are modelled in this entry.

In the following table, the Counts columns list the number of bonds (or angles) for which Mogul statistics could be retrieved, the number of bonds (or angles) that are observed in the model and the number of bonds (or angles) that are defined in the chemical component dictionary. The Link column lists molecule types, if any, to which the group is linked. The Z score for a bond length (or angle) is the number of standard deviations the observed value is removed from the expected value. A bond length (or angle) with $|Z| > 2$ is considered an outlier worth inspection. RMSZ is the root-mean-square of all Z scores of the bond lengths (or angles).

Mol	Type	Chain	Res	Link	Bond lengths			Bond angles		
					Counts	RMSZ	$\# Z > 2$	Counts	RMSZ	$\# Z > 2$
2	SO4	A	601	-	4,4,4	0.37	0	6,6,6	0.19	0
2	SO4	A	602	-	4,4,4	0.35	0	6,6,6	0.31	0
2	SO4	A	603	-	4,4,4	0.49	0	6,6,6	0.18	0
3	1PV	A	604	-	37,43,43	2.91	5 (13%)	42,65,65	2.45	10 (23%)
2	SO4	B	601	-	4,4,4	0.47	0	6,6,6	0.36	0
2	SO4	B	602	-	4,4,4	0.46	0	6,6,6	0.38	0
2	SO4	B	603	-	4,4,4	0.38	0	6,6,6	0.30	0

Mol	Type	Chain	Res	Link	Bond lengths			Bond angles		
					Counts	RMSZ	# Z > 2	Counts	RMSZ	# Z > 2
2	SO4	B	604	-	4,4,4	0.50	0	6,6,6	0.12	0
2	SO4	B	605	-	4,4,4	0.44	0	6,6,6	0.44	0
2	SO4	B	606	-	4,4,4	0.45	0	6,6,6	0.25	0
2	SO4	B	607	-	4,4,4	0.45	0	6,6,6	0.25	0

In the following table, the Chirals column lists the number of chiral outliers, the number of chiral centers analysed, the number of these observed in the model and the number defined in the chemical component dictionary. Similar counts are reported in the Torsion and Rings columns. '-' means no outliers of that kind were identified.

Mol	Type	Chain	Res	Link	Chirals	Torsions	Rings
2	SO4	A	601	-	-	0/0/0/0	0/0/0/0
2	SO4	A	602	-	-	0/0/0/0	0/0/0/0
2	SO4	A	603	-	-	0/0/0/0	0/0/0/0
3	1PV	A	604	-	-	0/26/34/34	0/3/5/5
2	SO4	B	601	-	-	0/0/0/0	0/0/0/0
2	SO4	B	602	-	-	0/0/0/0	0/0/0/0
2	SO4	B	603	-	-	0/0/0/0	0/0/0/0
2	SO4	B	604	-	-	0/0/0/0	0/0/0/0
2	SO4	B	605	-	-	0/0/0/0	0/0/0/0
2	SO4	B	606	-	-	0/0/0/0	0/0/0/0
2	SO4	B	607	-	-	0/0/0/0	0/0/0/0

All (5) bond length outliers are listed below:

Mol	Chain	Res	Type	Atoms	Z	Observed(Å)	Ideal(Å)
3	A	604	1PV	C24-S23	-5.93	1.64	1.75
3	A	604	1PV	C10-N11	-3.98	1.40	1.44
3	A	604	1PV	C28-C27	3.33	1.41	1.36
3	A	604	1PV	B17-O19	10.52	1.53	1.36
3	A	604	1PV	B17-O18	10.84	1.54	1.36

All (10) bond angle outliers are listed below:

Mol	Chain	Res	Type	Atoms	Z	Observed(°)	Ideal(°)
3	A	604	1PV	O26-S23-O25	-8.11	107.38	118.66
3	A	604	1PV	C22-C20-C16	-6.21	120.24	124.49
3	A	604	1PV	C10-C27-C30	-5.17	117.77	122.79
3	A	604	1PV	C9-C10-N11	-4.42	114.91	119.75
3	A	604	1PV	C35-C36-C38	-2.34	119.50	122.87
3	A	604	1PV	C39-C38-C36	2.27	120.80	118.35
3	A	604	1PV	C13-C22-C20	2.38	120.99	119.49

Continued on next page...

Continued from previous page...

Mol	Chain	Res	Type	Atoms	Z	Observed(°)	Ideal(°)
3	A	604	1PV	C12-N11-C10	3.48	122.69	117.00
3	A	604	1PV	C5-C6-C33	3.85	133.62	127.92
3	A	604	1PV	O25-S23-N11	5.43	113.15	107.66

There are no chirality outliers.

There are no torsion outliers.

There are no ring outliers.

2 monomers are involved in 2 short contacts:

Mol	Chain	Res	Type	Clashes	Symm-Clashes
2	A	602	SO4	1	0
3	A	604	1PV	1	0

5.7 Other polymers [i](#)

There are no such residues in this entry.

5.8 Polymer linkage issues [i](#)

There are no chain breaks in this entry.

6 Fit of model and data ⓘ

6.1 Protein, DNA and RNA chains ⓘ

In the following table, the column labelled ‘#RSRZ> 2’ contains the number (and percentage) of RSRZ outliers, followed by percent RSRZ outliers for the chain as percentile scores relative to all X-ray entries and entries of similar resolution. The OWAB column contains the minimum, median, 95th percentile and maximum values of the occupancy-weighted average B-factor per residue. The column labelled ‘Q< 0.9’ lists the number of (and percentage) of residues with an average occupancy less than 0.9.

Mol	Chain	Analysed	<RSRZ>	#RSRZ>2		OWAB(Å ²)	Q<0.9
1	A	562/579 (97%)	0.42	38 (6%)	20 22	17, 23, 35, 55	1 (0%)
1	B	562/579 (97%)	0.28	25 (4%)	38 41	16, 22, 36, 49	1 (0%)
All	All	1124/1158 (97%)	0.35	63 (5%)	28 30	16, 23, 35, 55	2 (0%)

All (63) RSRZ outliers are listed below:

Mol	Chain	Res	Type	RSRZ
1	A	558	GLY	7.9
1	A	548	SER	6.6
1	A	552	THR	6.3
1	B	548	SER	6.3
1	A	150	GLU	6.0
1	A	543	GLY	5.5
1	A	57	LEU	5.0
1	A	557	GLY	5.0
1	A	532	THR	4.9
1	A	547	LEU	4.8
1	A	553	ALA	4.7
1	A	545	LEU	4.7
1	A	352	ASP	4.2
1	A	556	SER	4.2
1	A	550	TRP	4.0
1	B	14	CYS	4.0
1	B	15	ALA	4.0
1	A	14	CYS	3.8
1	B	153	GLY	3.7
1	B	545	LEU	3.7
1	A	153	GLY	3.6
1	B	149	PRO	3.6
1	B	547	LEU	3.5
1	A	546	ALA	3.4

Continued on next page...

Continued from previous page...

Mol	Chain	Res	Type	RSRZ
1	B	131	VAL	3.4
1	A	551	PHE	3.4
1	B	352	ASP	3.4
1	B	46	CYS	3.2
1	A	15	ALA	3.2
1	B	377	ALA	3.0
1	B	57	LEU	2.9
1	B	546	ALA	2.9
1	B	376	GLY	2.8
1	A	152	GLY	2.8
1	B	513	SER	2.8
1	A	46	CYS	2.7
1	A	377	ALA	2.6
1	B	102	GLY	2.6
1	A	555	TYR	2.5
1	A	549	GLY	2.4
1	B	16	ALA	2.4
1	B	112	ALA	2.4
1	A	193	PHE	2.4
1	B	437	ASP	2.4
1	A	542	ALA	2.4
1	A	16	ALA	2.4
1	A	359	ASP	2.3
1	A	376	GLY	2.3
1	B	351	GLY	2.3
1	A	95	HIS	2.3
1	B	446	GLU	2.2
1	B	402	HIS	2.2
1	A	149	PRO	2.2
1	A	351	GLY	2.2
1	A	353	PRO	2.2
1	B	533	LYS	2.2
1	A	110	SER	2.2
1	A	406	ASN	2.1
1	A	1	SER	2.1
1	A	151	LYS	2.1
1	B	151	LYS	2.1
1	B	161	VAL	2.1
1	A	559	ASP	2.1

6.2 Non-standard residues in protein, DNA, RNA chains [i](#)

There are no non-standard protein/DNA/RNA residues in this entry.

6.3 Carbohydrates [i](#)

There are no carbohydrates in this entry.

6.4 Ligands [i](#)

In the following table, the Atoms column lists the number of modelled atoms in the group and the number defined in the chemical component dictionary. LLDF column lists the quality of electron density of the group with respect to its neighbouring residues in protein, DNA or RNA chains. The B-factors column lists the minimum, median, 95th percentile and maximum values of B factors of atoms in the group. The column labelled 'Q< 0.9' lists the number of atoms with occupancy less than 0.9.

Mol	Type	Chain	Res	Atoms	RSCC	RSR	LLDF	B-factors(Å ²)	Q<0.9
2	SO4	A	603	5/5	0.90	0.30	3.77	42,42,43,44	0
2	SO4	B	605	5/5	0.95	0.35	3.46	41,42,42,42	0
2	SO4	B	606	5/5	0.92	0.26	3.04	57,59,60,63	0
3	1PV	A	604	39/39	0.88	0.21	0.92	36,39,44,44	0
2	SO4	B	602	5/5	0.98	0.20	0.64	30,31,33,34	0
2	SO4	A	601	5/5	0.97	0.27	-0.05	32,33,34,35	0
2	SO4	B	601	5/5	0.98	0.11	-1.52	23,24,24,25	0
2	SO4	A	602	5/5	0.96	0.24	-	38,39,39,40	0
2	SO4	B	604	5/5	0.96	0.24	-	44,44,45,46	0
2	SO4	B	607	5/5	0.89	0.28	-	52,54,56,58	0
2	SO4	B	603	5/5	0.96	0.21	-	40,41,41,41	0

6.5 Other polymers [i](#)

There are no such residues in this entry.