



Full wwPDB X-ray Structure Validation Report ⓘ

Jan 31, 2016 – 08:29 PM GMT

PDB ID : 1KIA
Title : Crystal structure of glycine N-methyltransferase complexed with S-adenosylmethionine and acetate
Authors : Takusagawa, F.; Huang, Y.
Deposited on : 2001-12-02
Resolution : 2.80 Å(reported)

This is a Full wwPDB X-ray Structure Validation Report for a publicly released PDB entry.
We welcome your comments at validation@mail.wwpdb.org
A user guide is available at
<http://wwpdb.org/validation/2016/XrayValidationReportHelp>
with specific help available everywhere you see the ⓘ symbol.

The following versions of software and data (see [references ⓘ](#)) were used in the production of this report:

MolProbity : 4.02b-467
Mogul : 1.7 (RC4), CSD as536be (2015)
Xtriage (Phenix) : 1.9-1692
EDS : rb-20026688
Percentile statistics : 20151230.v01 (using entries in the PDB archive December 30th 2015)
Refmac : 5.8.0135
CCP4 : 6.5.0
Ideal geometry (proteins) : Engh & Huber (2001)
Ideal geometry (DNA, RNA) : Parkinson et al. (1996)
Validation Pipeline (wwPDB-VP) : trunk26865

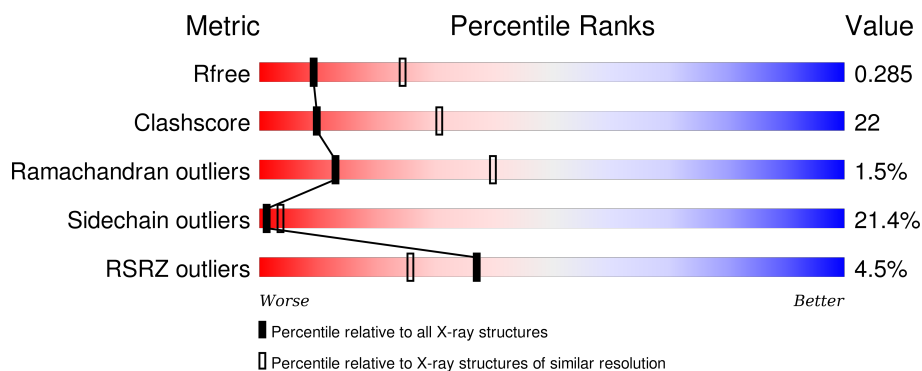
1 Overall quality at a glance

The following experimental techniques were used to determine the structure:

X-RAY DIFFRACTION

The reported resolution of this entry is 2.80 Å.

Percentile scores (ranging between 0-100) for global validation metrics of the entry are shown in the following graphic. The table shows the number of entries on which the scores are based.



Metric	Whole archive (#Entries)	Similar resolution (#Entries, resolution range(Å))
R_{free}	91344	2393 (2.80-2.80)
Clashscore	102246	2827 (2.80-2.80)
Ramachandran outliers	100387	2782 (2.80-2.80)
Sidechain outliers	100360	2784 (2.80-2.80)
RSRZ outliers	91569	2404 (2.80-2.80)

The table below summarises the geometric issues observed across the polymeric chains and their fit to the electron density. The red, orange, yellow and green segments on the lower bar indicate the fraction of residues that contain outliers for ≥ 3 , 2, 1 and 0 types of geometric quality criteria. A grey segment represents the fraction of residues that are not modelled. The numeric value for each fraction is indicated below the corresponding segment, with a dot representing fractions $\leq 5\%$. The upper red bar (where present) indicates the fraction of residues that have poor fit to the electron density. The numeric value is given above the bar.

Mol	Chain	Length	Quality of chain
1	A	292	<div> <div>4%</div> <div>52% 32% 11% 6%</div> </div>
1	B	292	<div> <div>4%</div> <div>50% 33% 11% 6%</div> </div>
1	C	292	<div> <div>5%</div> <div>52% 32% 10% 6%</div> </div>
1	D	292	<div> <div>4%</div> <div>50% 33% 11% 6%</div> </div>

The following table lists non-polymeric compounds, carbohydrate monomers and non-standard residues in protein, DNA, RNA chains that are outliers for geometric or electron-density-fit crite-

ria:

Mol	Type	Chain	Res	Chirality	Geometry	Clashes	Electron density
2	ACT	D	3294	-	-	X	X

2 Entry composition [i](#)

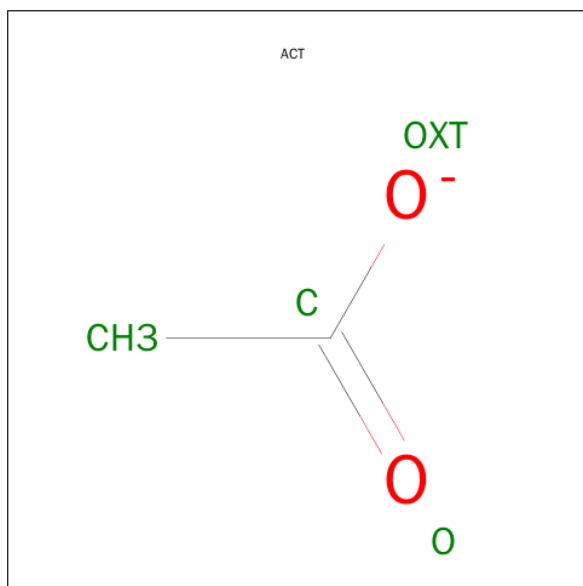
There are 4 unique types of molecules in this entry. The entry contains 8999 atoms, of which 0 are hydrogens and 0 are deuteriums.

In the tables below, the ZeroOcc column contains the number of atoms modelled with zero occupancy, the AltConf column contains the number of residues with at least one atom in alternate conformation and the Trace column contains the number of residues modelled with at most 2 atoms.

- Molecule 1 is a protein called Glycine N-methyltransferase.

Mol	Chain	Residues	Atoms					ZeroOcc	AltConf	Trace
1	A	275	Total	C	N	O	S	0	0	0
			2160	1373	376	400	11			
1	B	275	Total	C	N	O	S	0	0	0
			2160	1373	376	400	11			
1	C	275	Total	C	N	O	S	0	0	0
			2160	1373	376	400	11			
1	D	275	Total	C	N	O	S	0	0	0
			2160	1373	376	400	11			

- Molecule 2 is ACETATE ION (three-letter code: ACT) (formula: C₂H₃O₂).



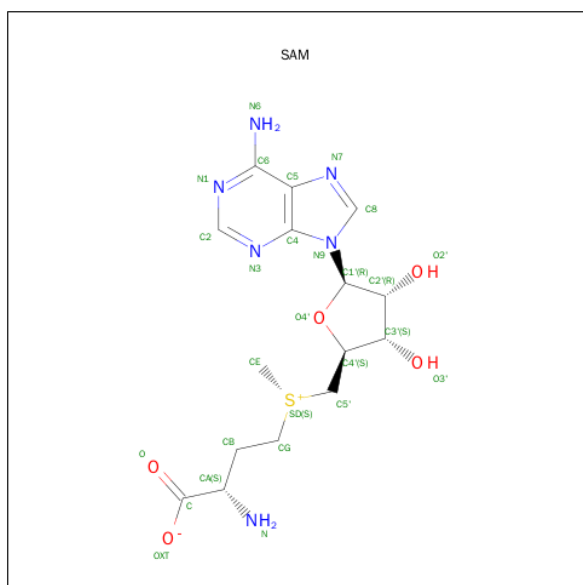
Mol	Chain	Residues	Atoms			ZeroOcc	AltConf
2	A	1	Total	C	O	0	0
			4	2	2		
2	B	1	Total	C	O	0	0
			4	2	2		

Continued on next page...

Continued from previous page...

Mol	Chain	Residues	Atoms			ZeroOcc	AltConf
2	C	1	Total	C	O	0	0
			4	2	2		
2	D	1	Total	C	O	0	0
			4	2	2		

- Molecule 3 is S-ADENOSYLMETHIONINE (three-letter code: SAM) (formula: C₁₅H₂₂N₆O₅S).



Mol	Chain	Residues	Atoms					ZeroOcc	AltConf
3	A	1	Total	C	N	O	S	0	0
			27	15	6	5	1		
3	B	1	Total	C	N	O	S	0	0
			27	15	6	5	1		
3	C	1	Total	C	N	O	S	0	0
			27	15	6	5	1		
3	D	1	Total	C	N	O	S	0	0
			27	15	6	5	1		

- Molecule 4 is water.

Mol	Chain	Residues	Atoms		ZeroOcc	AltConf
4	A	65	Total	O	0	0
			65	65		
4	B	59	Total	O	0	0
			59	59		
4	C	53	Total	O	0	0
			53	53		

Continued on next page...

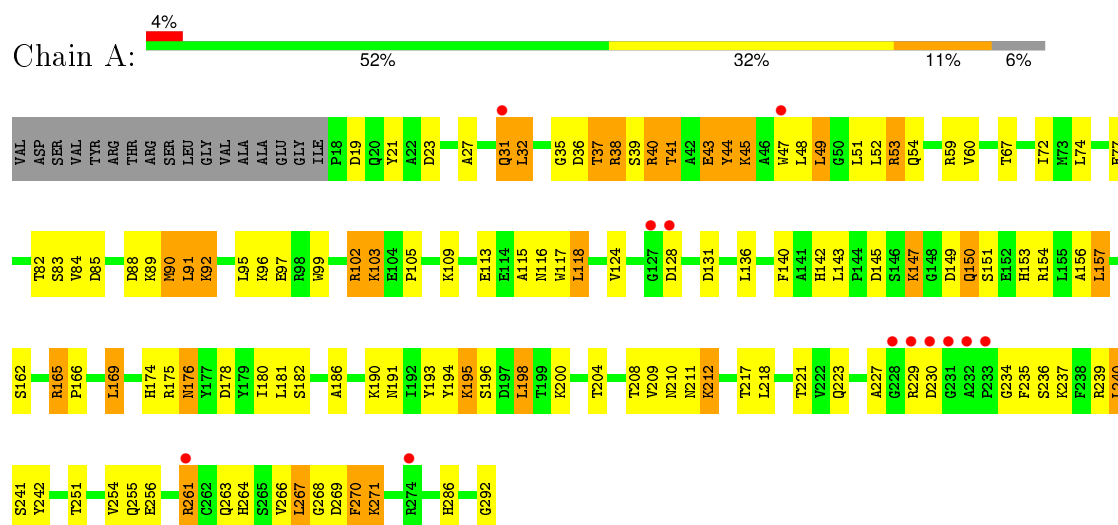
Continued from previous page...

Mol	Chain	Residues	Atoms		ZeroOcc	AltConf
4	D	58	Total	O	0	0
			58	58		

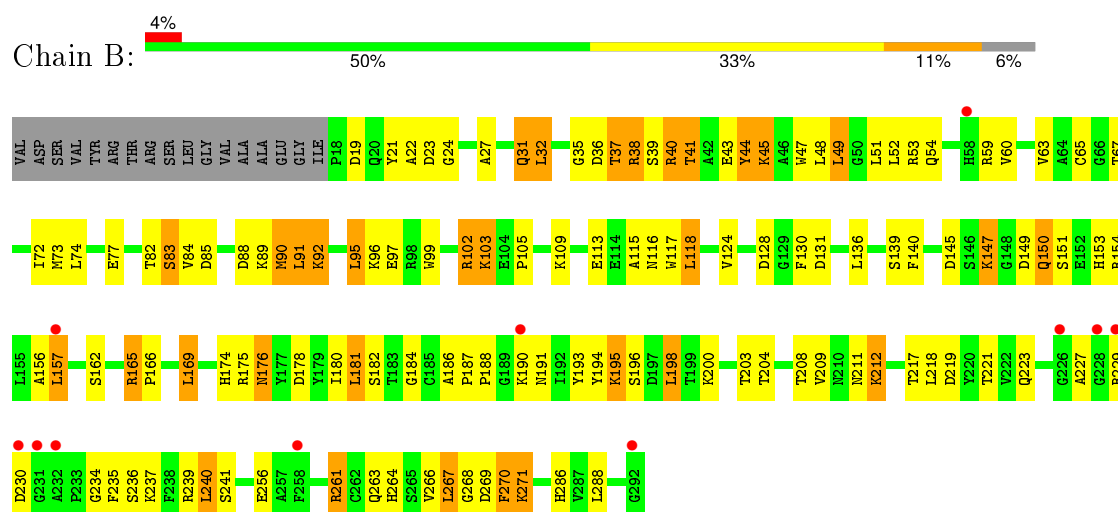
3 Residue-property plots

These plots are drawn for all protein, RNA and DNA chains in the entry. The first graphic for a chain summarises the proportions of errors displayed in the second graphic. The second graphic shows the sequence view annotated by issues in geometry and electron density. Residues are color-coded according to the number of geometric quality criteria for which they contain at least one outlier: green = 0, yellow = 1, orange = 2 and red = 3 or more. A red dot above a residue indicates a poor fit to the electron density ($RSRZ > 2$). Stretches of 2 or more consecutive residues without any outlier are shown as a green connector. Residues present in the sample, but not in the model, are shown in grey.

• Molecule 1: Glycine N-methyltransferase

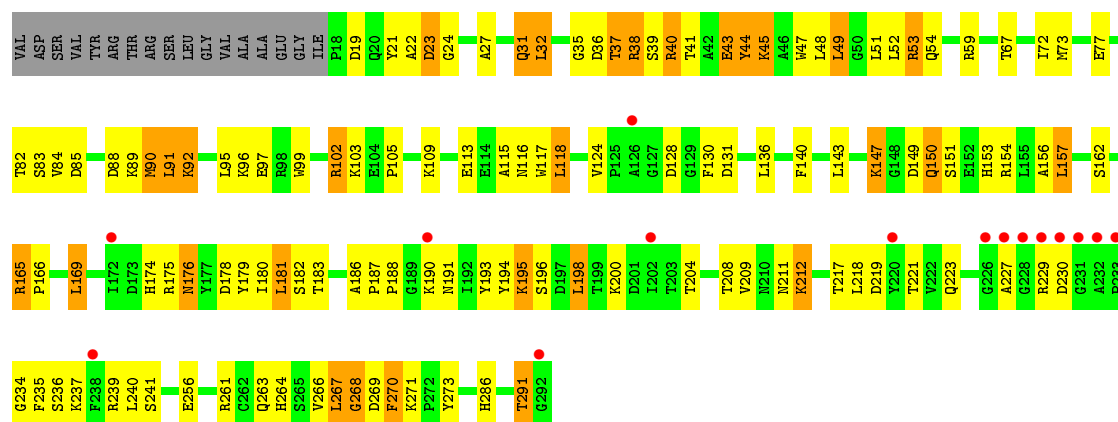


• Molecule 1: Glycine N-methyltransferase

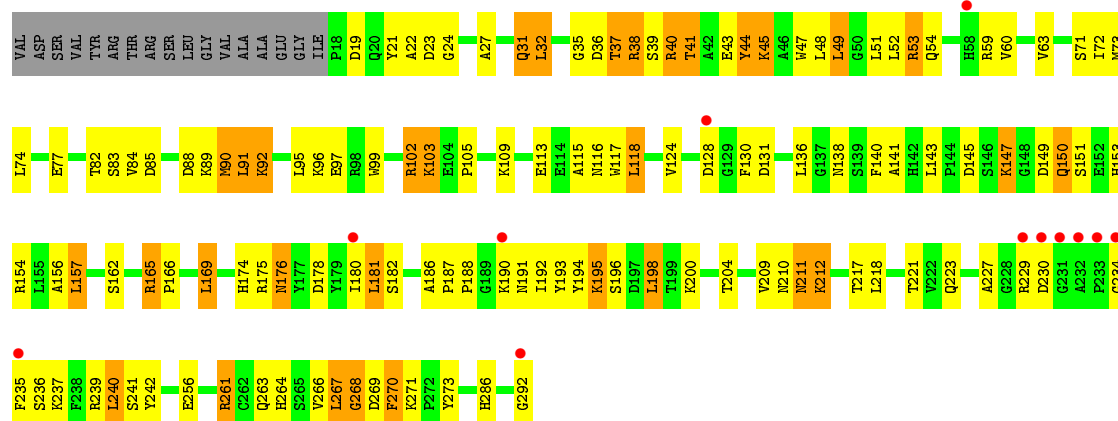


• Molecule 1: Glycine N-methyltransferase





• Molecule 1: Glycine N-methyltransferase



4 Data and refinement statistics

Property	Value	Source
Space group	P 21 21 21	Depositor
Cell constants a, b, c, α , β , γ	90.95Å 117.01Å 137.78Å 90.00° 90.00° 90.00°	Depositor
Resolution (Å)	8.00 – 2.80 89.19 – 2.80	Depositor EDS
% Data completeness (in resolution range)	(Not available) (8.00-2.80) 99.4 (89.19-2.80)	Depositor EDS
R_{merge}	0.11	Depositor
R_{sym}	0.11	Depositor
$\langle I/\sigma(I) \rangle$ ¹	6.79 (at 2.82Å)	Xtriage
Refinement program	X-PLOR 3.851	Depositor
R, R_{free}	0.216 , 0.286 0.226 , 0.285	Depositor DCC
R_{free} test set	3513 reflections (10.00%)	DCC
Wilson B-factor (Å ²)	37.5	Xtriage
Anisotropy	0.346	Xtriage
Bulk solvent k_{sol} (e/Å ³), B_{sol} (Å ²)	0.34 , 70.2	EDS
Estimated twinning fraction	No twinning to report.	Xtriage
L-test for twinning ²	$\langle L \rangle = 0.49$, $\langle L^2 \rangle = 0.33$	Xtriage
Outliers	0 of 36870 reflections	Xtriage
F_o, F_c correlation	0.87	EDS
Total number of atoms	8999	wwPDB-VP
Average B, all atoms (Å ²)	24.0	wwPDB-VP

Xtriage's analysis on translational NCS is as follows: *The largest off-origin peak in the Patterson function is 3.89% of the height of the origin peak. No significant pseudotranslation is detected.*

¹Intensities estimated from amplitudes.

²Theoretical values of $\langle |L| \rangle$, $\langle L^2 \rangle$ for acentric reflections are 0.5, 0.375 respectively for untwinned datasets, and 0.333, 0.2 for perfectly twinned datasets.

5 Model quality [i](#)

5.1 Standard geometry [i](#)

Bond lengths and bond angles in the following residue types are not validated in this section: SAM, ACT

The Z score for a bond length (or angle) is the number of standard deviations the observed value is removed from the expected value. A bond length (or angle) with $|Z| > 5$ is considered an outlier worth inspection. RMSZ is the root-mean-square of all Z scores of the bond lengths (or angles).

Mol	Chain	Bond lengths		Bond angles	
		RMSZ	$\# Z > 5$	RMSZ	$\# Z > 5$
1	A	0.33	0/2215	0.58	0/3002
1	B	0.33	0/2215	0.57	0/3002
1	C	0.32	0/2215	0.57	0/3002
1	D	0.34	0/2215	0.58	0/3002
All	All	0.33	0/8860	0.58	0/12008

There are no bond length outliers.

There are no bond angle outliers.

There are no chirality outliers.

There are no planarity outliers.

5.2 Too-close contacts [i](#)

In the following table, the Non-H and H(model) columns list the number of non-hydrogen atoms and hydrogen atoms in the chain respectively. The H(added) column lists the number of hydrogen atoms added and optimized by MolProbity. The Clashes column lists the number of clashes within the asymmetric unit, whereas Symm-Clashes lists symmetry related clashes.

Mol	Chain	Non-H	H(model)	H(added)	Clashes	Symm-Clashes
1	A	2160	0	2114	98	0
1	B	2160	0	2114	99	1
1	C	2160	0	2114	86	0
1	D	2160	0	2114	103	1
2	A	4	0	3	0	0
2	B	4	0	3	0	0
2	C	4	0	3	0	0
2	D	4	0	3	2	0
3	A	27	0	22	2	0

Continued on next page...

Continued from previous page...

Mol	Chain	Non-H	H(model)	H(added)	Clashes	Symm-Clashes
3	B	27	0	22	3	0
3	C	27	0	22	1	0
3	D	27	0	22	1	0
4	A	65	0	0	1	0
4	B	59	0	0	2	0
4	C	53	0	0	0	0
4	D	58	0	0	0	0
All	All	8999	0	8556	384	1

The all-atom clashscore is defined as the number of clashes found per 1000 atoms (including hydrogen atoms). The all-atom clashscore for this structure is 22.

All (384) close contacts within the same asymmetric unit are listed below, sorted by their clash magnitude.

Atom-1	Atom-2	Interatomic distance (Å)	Clash overlap (Å)
1:D:27:ALA:HA	1:D:90:MET:HE3	1.53	0.90
1:A:150:GLN:HG2	1:A:153:HIS:ND1	1.88	0.89
1:B:150:GLN:HG2	1:B:153:HIS:ND1	1.91	0.86
1:C:150:GLN:HG2	1:C:153:HIS:ND1	1.91	0.86
1:A:36:ASP:HA	1:A:38:ARG:HH21	1.41	0.85
1:C:36:ASP:HA	1:C:38:ARG:HH21	1.41	0.84
1:D:150:GLN:HG2	1:D:153:HIS:ND1	1.93	0.83
1:A:27:ALA:HA	1:A:90:MET:HE3	1.60	0.83
1:B:27:ALA:HA	1:B:90:MET:HE3	1.60	0.83
1:D:191:ASN:HD22	1:D:194:TYR:H	1.29	0.80
1:A:191:ASN:HD22	1:A:194:TYR:H	1.29	0.80
1:B:36:ASP:HA	1:B:38:ARG:HH21	1.46	0.79
1:D:227:ALA:HB3	1:D:234:GLY:HA3	1.65	0.78
1:A:227:ALA:CB	1:A:234:GLY:HA3	2.14	0.77
1:D:227:ALA:CB	1:D:234:GLY:HA3	2.14	0.76
1:D:36:ASP:HA	1:D:38:ARG:HH21	1.48	0.76
1:A:227:ALA:HB3	1:A:234:GLY:HA3	1.66	0.76
1:C:227:ALA:HB3	1:C:234:GLY:HA3	1.67	0.76
1:B:227:ALA:HB3	1:B:234:GLY:HA3	1.67	0.76
1:C:227:ALA:CB	1:C:234:GLY:HA3	2.16	0.76
1:C:191:ASN:HD22	1:C:194:TYR:H	1.33	0.76
1:A:217:THR:HG21	1:A:239:ARG:HE	1.52	0.74
1:B:191:ASN:HD22	1:B:194:TYR:H	1.34	0.74
1:A:269:ASP:O	1:A:270:PHE:HB2	1.88	0.74
1:B:227:ALA:CB	1:B:234:GLY:HA3	2.18	0.73
1:C:31:GLN:H	1:C:31:GLN:NE2	1.87	0.73

Continued on next page...

Continued from previous page...

Atom-1	Atom-2	Interatomic distance (Å)	Clash overlap (Å)
1:C:198:LEU:HG	1:C:223:GLN:O	1.89	0.72
1:B:269:ASP:O	1:B:270:PHE:HB2	1.90	0.71
1:D:217:THR:HG21	1:D:239:ARG:HE	1.54	0.71
1:D:31:GLN:H	1:D:31:GLN:NE2	1.89	0.70
1:B:217:THR:HG21	1:B:239:ARG:HE	1.56	0.70
1:C:31:GLN:HE21	1:C:31:GLN:H	1.37	0.69
1:D:31:GLN:H	1:D:31:GLN:HE21	1.39	0.69
1:C:217:THR:HG21	1:C:239:ARG:HE	1.57	0.69
1:D:269:ASP:O	1:D:270:PHE:HB2	1.91	0.68
1:B:198:LEU:HG	1:B:223:GLN:O	1.94	0.68
1:A:36:ASP:HB3	1:A:39:SER:HB3	1.76	0.67
1:A:84:VAL:HA	1:A:113:GLU:O	1.94	0.67
1:B:31:GLN:HE21	1:B:31:GLN:H	1.42	0.67
1:A:31:GLN:H	1:A:31:GLN:NE2	1.93	0.67
1:A:31:GLN:H	1:A:31:GLN:HE21	1.41	0.67
1:C:269:ASP:O	1:C:270:PHE:HB2	1.94	0.67
1:A:198:LEU:HG	1:A:223:GLN:O	1.95	0.66
1:B:31:GLN:NE2	1:B:31:GLN:H	1.93	0.66
1:D:32:LEU:HG	1:D:198:LEU:HD23	1.76	0.66
1:D:138:ASN:HD22	2:D:3294:ACT:CH3	2.08	0.66
1:C:67:THR:HG23	1:C:90:MET:HE1	1.78	0.65
1:C:27:ALA:HA	1:C:90:MET:HE3	1.77	0.65
1:D:227:ALA:HB3	1:D:234:GLY:CA	2.27	0.64
1:D:198:LEU:HG	1:D:223:GLN:O	1.96	0.64
1:B:84:VAL:HA	1:B:113:GLU:O	1.98	0.64
1:A:227:ALA:HB3	1:A:234:GLY:CA	2.28	0.63
1:D:36:ASP:HB3	1:D:39:SER:HB3	1.80	0.62
1:C:32:LEU:HG	1:C:198:LEU:HD23	1.81	0.62
1:B:227:ALA:HB3	1:B:234:GLY:CA	2.29	0.62
1:D:49:LEU:HG	1:D:53:ARG:NH2	2.15	0.62
1:D:191:ASN:HB3	1:D:194:TYR:O	1.99	0.62
1:C:227:ALA:HB3	1:C:234:GLY:CA	2.29	0.62
1:B:36:ASP:HB3	1:B:39:SER:HB3	1.82	0.61
1:C:84:VAL:HB	1:C:115:ALA:HB3	1.82	0.61
1:C:36:ASP:HB3	1:C:39:SER:HB3	1.82	0.61
1:C:209:VAL:HB	1:C:212:LYS:HZ3	1.65	0.61
1:C:84:VAL:HA	1:C:113:GLU:O	2.00	0.60
1:B:174:HIS:CE1	1:B:286:HIS:HE2	2.20	0.60
1:D:209:VAL:HB	1:D:212:LYS:NZ	2.17	0.60
1:D:84:VAL:HA	1:D:113:GLU:O	2.00	0.60
1:C:209:VAL:HB	1:C:212:LYS:NZ	2.17	0.59

Continued on next page...

Continued from previous page...

Atom-1	Atom-2	Interatomic distance (Å)	Clash overlap (Å)
1:D:51:LEU:HD11	1:D:169:LEU:HD21	1.85	0.58
1:B:32:LEU:HG	1:B:198:LEU:HD23	1.85	0.58
1:D:138:ASN:HD22	2:D:3294:ACT:H2	1.67	0.58
1:A:166:PRO:HB3	1:A:292:GLY:HA2	1.85	0.58
1:A:67:THR:HG23	1:A:90:MET:HE1	1.86	0.57
1:B:99:TRP:O	1:B:102:ARG:HB3	2.05	0.57
1:B:184:GLY:HA3	1:D:211:ASN:ND2	2.19	0.57
1:B:35:GLY:CA	1:B:196:SER:HB2	2.35	0.57
1:B:131:ASP:HA	1:B:165:ARG:HD3	1.86	0.57
1:B:200:LYS:HG3	1:B:235:PHE:HE2	1.70	0.57
1:C:85:ASP:HB3	1:C:91:LEU:HD22	1.86	0.57
1:D:174:HIS:CE1	1:D:286:HIS:HE2	2.22	0.57
1:A:27:ALA:HA	1:A:90:MET:CE	2.34	0.56
1:D:72:ILE:HD11	1:D:97:GLU:HG2	1.86	0.56
1:A:174:HIS:CE1	1:A:286:HIS:HE2	2.23	0.56
1:A:84:VAL:HB	1:A:115:ALA:HB3	1.86	0.56
1:C:131:ASP:HA	1:C:165:ARG:HD3	1.87	0.56
1:D:49:LEU:HD21	1:D:77:GLU:HG3	1.86	0.56
1:C:99:TRP:O	1:C:102:ARG:HB3	2.05	0.56
1:A:191:ASN:HB3	1:A:194:TYR:O	2.06	0.56
1:A:32:LEU:HG	1:A:198:LEU:HD23	1.87	0.56
1:A:48:LEU:O	1:A:52:LEU:HG	2.06	0.56
1:B:176:ASN:HD21	1:B:178:ASP:HB2	1.71	0.55
1:B:139:SER:OG	3:B:1293:SAM:H5'2	2.05	0.55
1:C:44:TYR:HB3	1:C:270:PHE:CD1	2.40	0.55
1:C:174:HIS:CE1	1:C:286:HIS:HE2	2.25	0.55
1:B:85:ASP:HB3	1:B:91:LEU:HD22	1.88	0.55
1:B:51:LEU:HD11	1:B:169:LEU:HD21	1.87	0.55
1:C:49:LEU:HD21	1:C:77:GLU:HG3	1.88	0.55
1:C:191:ASN:HB3	1:C:194:TYR:O	2.06	0.55
1:D:72:ILE:CD1	1:D:97:GLU:HG2	2.37	0.55
1:C:200:LYS:HG3	1:C:235:PHE:HE2	1.72	0.54
1:C:72:ILE:CD1	1:C:97:GLU:HG2	2.37	0.54
1:D:40:ARG:HA	1:D:195:LYS:CE	2.37	0.54
1:B:40:ARG:HA	1:B:195:LYS:CE	2.38	0.54
1:A:227:ALA:HB1	1:A:234:GLY:HA3	1.89	0.54
1:C:51:LEU:HD11	1:C:169:LEU:HD21	1.89	0.54
1:B:84:VAL:HB	1:B:115:ALA:HB3	1.90	0.54
1:B:191:ASN:HB3	1:B:194:TYR:O	2.07	0.54
1:B:174:HIS:HD2	1:B:175:ARG:O	1.90	0.53
1:B:72:ILE:HD11	1:B:97:GLU:HG2	1.89	0.53

Continued on next page...

Continued from previous page...

Atom-1	Atom-2	Interatomic distance (Å)	Clash overlap (Å)
1:C:72:ILE:HD11	1:C:97:GLU:HG2	1.90	0.53
1:D:99:TRP:O	1:D:102:ARG:HB3	2.08	0.53
1:C:35:GLY:CA	1:C:196:SER:HB2	2.39	0.53
1:D:200:LYS:HG3	1:D:235:PHE:HE2	1.74	0.53
1:D:131:ASP:HA	1:D:165:ARG:HD3	1.91	0.53
1:B:174:HIS:HE1	1:B:286:HIS:HE2	1.55	0.53
1:B:47:TRP:CZ2	1:B:267:LEU:HD11	2.44	0.53
1:D:85:ASP:HB3	1:D:91:LEU:HD22	1.90	0.53
1:B:72:ILE:CD1	1:B:97:GLU:HG2	2.39	0.53
1:A:72:ILE:HD11	1:A:97:GLU:HG2	1.91	0.53
1:D:47:TRP:CZ2	1:D:267:LEU:HD11	2.44	0.53
1:D:35:GLY:CA	1:D:196:SER:HB2	2.39	0.52
1:A:154:ARG:HG2	1:A:256:GLU:OE2	2.08	0.52
1:B:44:TYR:HB3	1:B:270:PHE:CD1	2.43	0.52
1:D:84:VAL:HB	1:D:115:ALA:HB3	1.91	0.52
1:D:40:ARG:HA	1:D:195:LYS:HE3	1.92	0.52
1:B:40:ARG:HA	1:B:195:LYS:HE3	1.90	0.52
1:C:153:HIS:O	1:C:157:LEU:HB2	2.10	0.52
1:A:44:TYR:HB3	1:A:270:PHE:CD1	2.45	0.52
1:A:35:GLY:CA	1:A:196:SER:HB2	2.39	0.52
1:A:37:THR:HG23	1:A:38:ARG:CZ	2.39	0.52
1:C:221:THR:HG23	1:C:237:LYS:HE2	1.92	0.52
1:C:227:ALA:HB1	1:C:234:GLY:HA3	1.92	0.51
1:D:19:ASP:C	1:D:21:TYR:H	2.13	0.51
1:A:221:THR:HG23	1:A:237:LYS:HE2	1.90	0.51
1:B:153:HIS:O	1:B:157:LEU:HB2	2.10	0.51
1:B:49:LEU:HD21	1:B:77:GLU:HG3	1.92	0.51
1:C:154:ARG:HG2	1:C:256:GLU:OE2	2.10	0.51
1:A:140:PHE:CE1	1:A:157:LEU:HD13	2.44	0.51
1:D:153:HIS:O	1:D:157:LEU:HB2	2.09	0.51
1:D:37:THR:HG23	1:D:38:ARG:CZ	2.40	0.51
1:A:131:ASP:HA	1:A:165:ARG:HD3	1.92	0.51
1:A:72:ILE:CD1	1:A:97:GLU:HG2	2.39	0.51
1:A:51:LEU:HD11	1:A:169:LEU:HD21	1.92	0.51
1:C:191:ASN:O	1:C:195:LYS:HG2	2.11	0.51
1:D:49:LEU:O	1:D:53:ARG:HG2	2.11	0.51
1:C:174:HIS:HD2	1:C:175:ARG:O	1.94	0.51
1:D:180:ILE:HG12	1:D:186:ALA:HA	1.93	0.51
1:B:67:THR:HG23	1:B:90:MET:HE1	1.93	0.51
1:D:154:ARG:HG2	1:D:256:GLU:OE2	2.11	0.51
1:C:180:ILE:HG12	1:C:186:ALA:HA	1.93	0.51

Continued on next page...

Continued from previous page...

Atom-1	Atom-2	Interatomic distance (Å)	Clash overlap (Å)
1:D:264:HIS:HE1	1:D:286:HIS:ND1	2.09	0.50
1:B:116:ASN:HA	3:B:1293:SAM:N1	2.26	0.50
1:C:47:TRP:CZ2	1:C:267:LEU:HD11	2.46	0.50
1:A:116:ASN:HA	3:A:293:SAM:N1	2.26	0.50
1:A:264:HIS:HE1	1:A:286:HIS:ND1	2.09	0.50
1:D:48:LEU:O	1:D:52:LEU:HG	2.11	0.50
1:C:165:ARG:HG2	1:C:166:PRO:O	2.12	0.50
1:C:140:PHE:CE1	1:C:157:LEU:HD13	2.46	0.50
1:D:227:ALA:HB1	1:D:234:GLY:HA3	1.90	0.50
1:A:165:ARG:HG2	1:A:166:PRO:O	2.12	0.50
1:B:19:ASP:C	1:B:21:TYR:H	2.14	0.50
1:A:19:ASP:C	1:A:21:TYR:H	2.14	0.50
1:D:191:ASN:O	1:D:195:LYS:HG2	2.12	0.50
1:A:47:TRP:CZ2	1:A:267:LEU:HD11	2.46	0.50
1:C:40:ARG:HA	1:C:195:LYS:HE3	1.94	0.50
1:D:140:PHE:CE1	1:D:157:LEU:HD13	2.46	0.50
1:A:200:LYS:HG3	1:A:235:PHE:HE2	1.76	0.50
1:C:40:ARG:HA	1:C:195:LYS:CE	2.42	0.49
1:A:49:LEU:HD21	1:A:77:GLU:HG3	1.92	0.49
1:B:88:ASP:O	1:B:92:LYS:HB3	2.11	0.49
1:B:27:ALA:HA	1:B:90:MET:CE	2.37	0.49
1:B:37:THR:HG23	1:B:38:ARG:NH2	2.27	0.49
1:B:84:VAL:HG11	1:B:124:VAL:HG21	1.93	0.49
1:B:200:LYS:HG3	1:B:235:PHE:CE2	2.47	0.49
1:B:180:ILE:HG12	1:B:186:ALA:HA	1.94	0.49
1:A:153:HIS:O	1:A:157:LEU:HB2	2.13	0.49
1:D:174:HIS:HD2	1:D:175:ARG:O	1.95	0.49
1:C:19:ASP:C	1:C:21:TYR:H	2.14	0.49
1:C:37:THR:HG23	1:C:38:ARG:CZ	2.43	0.49
1:B:37:THR:HG23	1:B:38:ARG:CZ	2.43	0.49
1:C:48:LEU:O	1:C:52:LEU:HG	2.13	0.49
1:B:191:ASN:O	1:B:195:LYS:HG2	2.13	0.49
1:A:99:TRP:O	1:A:102:ARG:HB3	2.12	0.49
1:A:208:THR:HG23	1:A:212:LYS:C	2.33	0.49
1:B:48:LEU:O	1:B:52:LEU:HG	2.13	0.48
1:D:196:SER:OG	1:D:198:LEU:HB2	2.13	0.48
1:A:209:VAL:HB	1:A:212:LYS:NZ	2.27	0.48
1:C:21:TYR:CE1	3:C:2293:SAM:H3'	2.48	0.48
1:B:264:HIS:HE1	1:B:286:HIS:ND1	2.11	0.48
1:B:60:VAL:HG11	1:B:74:LEU:CD1	2.44	0.48
1:C:84:VAL:HG11	1:C:124:VAL:HG21	1.95	0.48

Continued on next page...

Continued from previous page...

Atom-1	Atom-2	Interatomic distance (Å)	Clash overlap (Å)
1:A:40:ARG:HA	1:A:195:LYS:CE	2.44	0.48
1:C:200:LYS:HG3	1:C:235:PHE:CE2	2.49	0.48
1:D:117:TRP:CZ3	1:D:140:PHE:HA	2.49	0.47
1:D:174:HIS:HE1	1:D:286:HIS:HE2	1.60	0.47
1:C:264:HIS:HE1	1:C:286:HIS:ND1	2.12	0.47
1:B:49:LEU:HG	1:B:53:ARG:NH2	2.29	0.47
1:B:39:SER:O	1:B:195:LYS:HE3	2.14	0.47
1:B:130:PHE:O	1:B:165:ARG:HB3	2.14	0.47
1:D:165:ARG:HG2	1:D:166:PRO:O	2.14	0.47
1:B:227:ALA:HB1	1:B:234:GLY:HA3	1.95	0.47
1:A:176:ASN:HD21	1:A:178:ASP:HB2	1.80	0.47
1:D:37:THR:HG23	1:D:38:ARG:NH2	2.29	0.47
1:B:165:ARG:HG2	1:B:166:PRO:O	2.14	0.47
1:A:39:SER:O	1:A:195:LYS:HE3	2.13	0.47
1:D:200:LYS:HG3	1:D:235:PHE:CE2	2.50	0.47
1:B:204:THR:HA	1:B:218:LEU:HD23	1.97	0.47
1:D:105:PRO:O	1:D:109:LYS:HE3	2.14	0.47
1:D:147:LYS:HE2	1:D:147:LYS:O	2.15	0.47
1:C:27:ALA:HA	1:C:90:MET:CE	2.44	0.47
1:C:37:THR:HG23	1:C:38:ARG:NH2	2.30	0.47
1:D:209:VAL:HB	1:D:212:LYS:HZ2	1.79	0.47
1:C:291:THR:OG1	1:C:291:THR:O	2.32	0.47
1:B:154:ARG:HG2	1:B:256:GLU:OE2	2.15	0.47
1:C:40:ARG:HD2	1:C:193:TYR:O	2.15	0.47
1:D:84:VAL:HG11	1:D:124:VAL:HG21	1.97	0.47
1:B:209:VAL:HB	1:B:212:LYS:NZ	2.30	0.47
1:D:44:TYR:HB3	1:D:270:PHE:CD1	2.50	0.46
1:A:174:HIS:HD2	1:A:175:ARG:O	1.98	0.46
1:A:204:THR:HA	1:A:218:LEU:HD23	1.97	0.46
1:C:176:ASN:HD21	1:C:178:ASP:HB2	1.79	0.46
1:B:221:THR:HG23	1:B:237:LYS:HE2	1.97	0.46
1:B:203:THR:HA	1:D:210:ASN:HD21	1.81	0.46
1:B:40:ARG:HD2	1:B:193:TYR:O	2.16	0.46
1:B:147:LYS:O	1:B:147:LYS:HE2	2.15	0.46
1:A:196:SER:OG	1:A:198:LEU:HB2	2.15	0.46
1:A:140:PHE:CZ	1:A:157:LEU:HD13	2.50	0.46
1:C:84:VAL:HG11	1:C:124:VAL:CG2	2.45	0.46
1:D:40:ARG:CG	1:D:41:THR:N	2.79	0.46
1:A:85:ASP:HB3	1:A:91:LEU:HD22	1.96	0.46
1:B:219:ASP:OD1	1:B:239:ARG:HB2	2.16	0.45
1:D:27:ALA:HA	1:D:90:MET:CE	2.36	0.45

Continued on next page...

Continued from previous page...

Atom-1	Atom-2	Interatomic distance (Å)	Clash overlap (Å)
1:B:103:LYS:HD3	1:B:103:LYS:HA	1.72	0.45
1:A:84:VAL:HG11	1:A:124:VAL:HG21	1.99	0.45
1:C:130:PHE:O	1:C:165:ARG:HB3	2.17	0.45
1:B:105:PRO:O	1:B:109:LYS:HE3	2.16	0.45
1:A:37:THR:HG23	1:A:38:ARG:NH2	2.31	0.45
1:D:39:SER:O	1:D:195:LYS:HE3	2.15	0.45
1:D:239:ARG:O	1:D:240:LEU:HD13	2.15	0.45
1:B:35:GLY:HA3	1:B:196:SER:HB2	1.98	0.45
1:D:45:LYS:O	1:D:49:LEU:HB2	2.16	0.45
1:C:208:THR:HG23	1:C:212:LYS:C	2.36	0.45
1:D:221:THR:HG23	1:D:237:LYS:HE2	1.98	0.45
1:B:84:VAL:HG11	1:B:124:VAL:CG2	2.46	0.45
1:A:147:LYS:HE2	1:A:147:LYS:O	2.17	0.45
1:D:261:ARG:NH2	1:D:292:GLY:O	2.49	0.45
1:C:88:ASP:O	1:C:92:LYS:HB3	2.17	0.45
1:A:180:ILE:HG12	1:A:186:ALA:HA	1.98	0.45
1:B:117:TRP:CZ3	1:B:140:PHE:HA	2.51	0.45
1:C:117:TRP:CZ3	1:C:140:PHE:HA	2.52	0.45
1:C:147:LYS:HE2	1:C:147:LYS:O	2.17	0.45
1:D:268:GLY:N	1:D:273:TYR:HB2	2.32	0.45
1:A:60:VAL:HG11	1:A:74:LEU:CD1	2.47	0.45
1:A:191:ASN:HD22	1:A:194:TYR:N	2.06	0.45
1:B:140:PHE:CE1	1:B:157:LEU:HD13	2.52	0.44
1:B:63:VAL:HA	1:B:84:VAL:CG2	2.48	0.44
1:D:84:VAL:HG11	1:D:124:VAL:CG2	2.47	0.44
1:D:19:ASP:HB3	1:D:22:ALA:HB2	1.98	0.44
1:A:176:ASN:HD22	1:A:176:ASN:C	2.19	0.44
1:A:105:PRO:O	1:A:109:LYS:HE3	2.17	0.44
1:B:198:LEU:HA	1:B:198:LEU:HD12	1.84	0.44
1:C:49:LEU:HG	1:C:53:ARG:NH2	2.32	0.44
1:A:200:LYS:HG3	1:A:235:PHE:CE2	2.52	0.44
1:B:261:ARG:HE	1:B:261:ARG:HA	1.83	0.44
1:A:36:ASP:CG	1:A:38:ARG:HE	2.20	0.44
1:B:239:ARG:O	1:B:240:LEU:HD13	2.18	0.44
1:A:210:ASN:HD22	1:A:210:ASN:HA	1.62	0.44
1:A:88:ASP:O	1:A:92:LYS:HB3	2.18	0.44
1:D:176:ASN:HD21	1:D:178:ASP:HB2	1.83	0.44
1:D:49:LEU:O	1:D:53:ARG:CG	2.65	0.44
1:B:264:HIS:ND1	1:B:288:LEU:HD21	2.33	0.44
1:C:176:ASN:C	1:C:176:ASN:HD22	2.20	0.44
1:D:88:ASP:O	1:D:92:LYS:HB3	2.18	0.44

Continued on next page...

Continued from previous page...

Atom-1	Atom-2	Interatomic distance (Å)	Clash overlap (Å)
1:D:261:ARG:NE	1:D:261:ARG:HA	2.32	0.43
1:C:181:LEU:HA	1:C:181:LEU:HD12	1.83	0.43
1:A:239:ARG:O	1:A:240:LEU:HD13	2.17	0.43
1:B:261:ARG:NE	1:B:261:ARG:HA	2.33	0.43
1:B:149:ASP:C	1:B:151:SER:H	2.22	0.43
1:D:116:ASN:OD1	1:D:118:LEU:HB2	2.18	0.43
1:A:40:ARG:HA	1:A:195:LYS:HE3	2.00	0.43
1:A:254:VAL:HG13	1:A:255:GLN:N	2.34	0.43
1:A:40:ARG:CG	1:A:41:THR:N	2.82	0.43
1:B:176:ASN:C	1:B:176:ASN:HD22	2.21	0.43
1:A:43:GLU:O	1:A:45:LYS:N	2.52	0.43
1:D:176:ASN:HD22	1:D:176:ASN:C	2.21	0.43
1:B:118:LEU:HD13	1:B:156:ALA:HB2	2.01	0.43
1:A:84:VAL:HG11	1:A:124:VAL:CG2	2.48	0.43
1:B:91:LEU:HA	1:B:91:LEU:HD12	1.86	0.43
1:A:149:ASP:C	1:A:151:SER:H	2.21	0.43
1:C:150:GLN:O	1:C:153:HIS:HB2	2.19	0.43
1:C:35:GLY:HA3	1:C:196:SER:HB2	1.99	0.43
1:B:267:LEU:HB3	1:B:271:LYS:O	2.18	0.43
1:A:116:ASN:OD1	1:A:118:LEU:HB2	2.18	0.43
1:D:60:VAL:HG11	1:D:74:LEU:CD1	2.48	0.43
1:A:117:TRP:CZ3	1:A:140:PHE:HA	2.54	0.43
1:A:150:GLN:O	1:A:153:HIS:HB2	2.19	0.43
1:D:40:ARG:HG3	1:D:41:THR:N	2.32	0.43
1:A:198:LEU:HA	1:A:198:LEU:HD12	1.83	0.43
1:B:187:PRO:HA	1:B:188:PRO:HD3	1.93	0.43
1:A:143:LEU:HA	1:A:143:LEU:HD12	1.86	0.43
1:A:40:ARG:HD2	1:A:193:TYR:O	2.18	0.43
1:C:149:ASP:C	1:C:151:SER:H	2.21	0.43
1:C:198:LEU:HD12	1:C:198:LEU:HA	1.83	0.43
1:C:268:GLY:N	1:C:273:TYR:HB2	2.34	0.43
1:D:264:HIS:CE1	1:D:286:HIS:ND1	2.87	0.42
1:A:49:LEU:HG	1:A:53:ARG:NH2	2.34	0.42
1:D:103:LYS:HD3	1:D:103:LYS:HA	1.73	0.42
1:D:91:LEU:HA	1:D:91:LEU:HD12	1.86	0.42
1:D:21:TYR:CE1	3:D:3293:SAM:H3'	2.54	0.42
1:D:209:VAL:HB	1:D:212:LYS:HZ3	1.83	0.42
1:D:32:LEU:CG	1:D:198:LEU:HD23	2.47	0.42
1:D:63:VAL:HA	1:D:84:VAL:CG2	2.50	0.42
1:D:261:ARG:HE	1:D:261:ARG:HA	1.85	0.42
1:D:181:LEU:HA	1:D:181:LEU:HD12	1.89	0.42

Continued on next page...

Continued from previous page...

Atom-1	Atom-2	Interatomic distance (Å)	Clash overlap (Å)
1:A:261:ARG:NE	1:A:261:ARG:HA	2.34	0.42
1:B:24:GLY:CA	1:B:89:LYS:HD2	2.50	0.42
1:B:40:ARG:CG	1:B:41:THR:N	2.81	0.42
1:A:21:TYR:CE1	3:A:293:SAM:H3'	2.55	0.42
1:B:95:LEU:HB3	4:B:5030:HOH:O	2.20	0.42
1:D:198:LEU:HA	1:D:198:LEU:HD12	1.80	0.42
1:B:139:SER:CB	3:B:1293:SAM:H5'2	2.50	0.42
1:C:187:PRO:HA	1:C:188:PRO:HD3	1.92	0.42
1:D:204:THR:HA	1:D:218:LEU:HD23	2.02	0.42
1:B:145:ASP:OD2	1:B:145:ASP:O	2.38	0.42
1:A:131:ASP:CG	1:A:165:ARG:HH21	2.22	0.42
1:B:65:CYS:HB2	1:B:83:SER:HB3	2.01	0.42
1:A:174:HIS:HE1	1:A:286:HIS:HE2	1.66	0.42
1:B:19:ASP:HB3	1:B:22:ALA:HB2	2.02	0.42
1:C:196:SER:OG	1:C:198:LEU:HB2	2.20	0.41
1:D:149:ASP:C	1:D:151:SER:H	2.23	0.41
1:C:179:TYR:CE2	1:C:183:THR:HG21	2.55	0.41
1:B:191:ASN:ND2	1:B:193:TYR:H	2.17	0.41
1:A:103:LYS:HA	1:A:103:LYS:HD3	1.71	0.41
1:C:116:ASN:OD1	1:C:118:LEU:HB2	2.21	0.41
1:D:35:GLY:HA3	1:D:196:SER:HB2	2.02	0.41
1:C:45:LYS:O	1:C:49:LEU:HB2	2.20	0.41
1:D:118:LEU:HD13	1:D:156:ALA:HB2	2.03	0.41
1:B:187:PRO:HB2	4:B:5120:HOH:O	2.19	0.41
1:D:140:PHE:CZ	1:D:157:LEU:HD13	2.56	0.41
1:A:145:ASP:OD2	1:A:145:ASP:O	2.38	0.41
1:C:43:GLU:O	1:C:45:LYS:N	2.53	0.41
1:B:45:LYS:O	1:B:49:LEU:HB2	2.20	0.41
1:A:118:LEU:HD13	1:A:156:ALA:HB2	2.02	0.41
1:C:19:ASP:HB3	1:C:22:ALA:HB2	2.03	0.41
1:D:210:ASN:HD22	1:D:210:ASN:HA	1.63	0.41
1:C:36:ASP:CG	1:C:38:ARG:HE	2.23	0.41
1:A:35:GLY:HA3	1:A:196:SER:HB2	2.01	0.41
1:D:141:ALA:HB1	1:D:242:TYR:HB3	2.01	0.41
1:B:181:LEU:HA	1:B:181:LEU:HD12	1.83	0.41
1:A:157:LEU:HD12	1:A:157:LEU:HA	1.94	0.41
1:D:130:PHE:O	1:D:165:ARG:HB3	2.21	0.41
1:A:209:VAL:HB	1:A:212:LYS:HZ3	1.86	0.41
1:B:208:THR:HG23	1:B:212:LYS:C	2.41	0.41
1:A:142:HIS:CE1	1:A:242:TYR:HE1	2.38	0.41
1:C:143:LEU:HA	1:C:143:LEU:HD12	1.82	0.41

Continued on next page...

Continued from previous page...

Atom-1	Atom-2	Interatomic distance (Å)	Clash overlap (Å)
1:D:145:ASP:OD2	1:D:145:ASP:O	2.39	0.41
1:C:204:THR:HA	1:C:218:LEU:HD23	2.03	0.41
1:C:140:PHE:CZ	1:C:157:LEU:HD13	2.55	0.41
1:A:191:ASN:O	1:A:195:LYS:HG2	2.21	0.41
1:D:36:ASP:CG	1:D:38:ARG:HE	2.24	0.41
1:B:36:ASP:CG	1:B:38:ARG:HE	2.24	0.41
1:C:24:GLY:CA	1:C:89:LYS:HD2	2.51	0.41
1:D:24:GLY:CA	1:D:89:LYS:HD2	2.51	0.41
1:C:219:ASP:OD1	1:C:239:ARG:HB2	2.21	0.41
1:A:251:THR:O	1:A:255:GLN:HG3	2.21	0.41
1:C:23:ASP:OD1	1:C:24:GLY:N	2.54	0.41
1:D:187:PRO:HA	1:D:188:PRO:HD3	1.92	0.41
1:D:192:ILE:HG13	1:D:193:TYR:N	2.35	0.41
1:D:191:ASN:HD22	1:D:194:TYR:N	2.07	0.40
1:C:118:LEU:HD13	1:C:156:ALA:HB2	2.02	0.40
1:A:37:THR:H	1:A:38:ARG:NH2	2.19	0.40
1:A:267:LEU:HB3	1:A:271:LYS:O	2.21	0.40
1:D:143:LEU:HA	1:D:143:LEU:HD12	1.88	0.40
1:C:105:PRO:O	1:C:109:LYS:HE3	2.22	0.40
1:C:39:SER:O	1:C:195:LYS:HE3	2.20	0.40
1:A:176:ASN:ND2	1:A:176:ASN:C	2.75	0.40
1:B:150:GLN:O	1:B:153:HIS:HB2	2.21	0.40
1:B:196:SER:OG	1:B:198:LEU:HB2	2.22	0.40
1:A:49:LEU:HD12	1:A:49:LEU:HA	1.83	0.40
1:B:264:HIS:CE1	1:B:286:HIS:ND1	2.89	0.40
1:A:264:HIS:CE1	1:A:286:HIS:ND1	2.88	0.40
1:D:131:ASP:CG	1:D:165:ARG:HH21	2.25	0.40
1:A:45:LYS:O	1:A:49:LEU:HB2	2.21	0.40
1:B:118:LEU:HA	1:B:118:LEU:HD12	1.93	0.40
1:A:89:LYS:NZ	4:A:5159:HOH:O	2.54	0.40

All (1) symmetry-related close contacts are listed below. The label for Atom-2 includes the symmetry operator and encoded unit-cell translations to be applied.

Atom-1	Atom-2	Interatomic distance (Å)	Clash overlap (Å)
1:B:227:ALA:N	1:D:53:ARG:NE[2_675]	2.12	0.08

5.3 Torsion angles

5.3.1 Protein backbone

In the following table, the Percentiles column shows the percent Ramachandran outliers of the chain as a percentile score with respect to all X-ray entries followed by that with respect to entries of similar resolution.

The Analysed column shows the number of residues for which the backbone conformation was analysed, and the total number of residues.

Mol	Chain	Analysed	Favoured	Allowed	Outliers	Percentiles	
1	A	273/292 (94%)	252 (92%)	17 (6%)	4 (2%)	13	40
1	B	273/292 (94%)	254 (93%)	15 (6%)	4 (2%)	13	40
1	C	273/292 (94%)	253 (93%)	16 (6%)	4 (2%)	13	40
1	D	273/292 (94%)	252 (92%)	17 (6%)	4 (2%)	13	40
All	All	1092/1168 (94%)	1011 (93%)	65 (6%)	16 (2%)	13	40

All (16) Ramachandran outliers are listed below:

Mol	Chain	Res	Type
1	A	44	TYR
1	B	44	TYR
1	C	44	TYR
1	D	44	TYR
1	A	268	GLY
1	D	268	GLY
1	A	270	PHE
1	B	268	GLY
1	B	270	PHE
1	C	150	GLN
1	C	268	GLY
1	A	150	GLN
1	B	150	GLN
1	C	270	PHE
1	D	150	GLN
1	D	270	PHE

5.3.2 Protein sidechains

In the following table, the Percentiles column shows the percent sidechain outliers of the chain as a percentile score with respect to all X-ray entries followed by that with respect to entries of similar resolution.

The Analysed column shows the number of residues for which the sidechain conformation was analysed, and the total number of residues.

Mol	Chain	Analysed	Rotameric	Outliers	Percentiles	
1	A	229/242 (95%)	181 (79%)	48 (21%)	1	4
1	B	229/242 (95%)	181 (79%)	48 (21%)	1	4
1	C	229/242 (95%)	179 (78%)	50 (22%)	1	3
1	D	229/242 (95%)	179 (78%)	50 (22%)	1	3
All	All	916/968 (95%)	720 (79%)	196 (21%)	1	3

All (196) residues with a non-rotameric sidechain are listed below:

Mol	Chain	Res	Type
1	A	23	ASP
1	A	31	GLN
1	A	32	LEU
1	A	37	THR
1	A	38	ARG
1	A	40	ARG
1	A	41	THR
1	A	43	GLU
1	A	45	LYS
1	A	49	LEU
1	A	53	ARG
1	A	54	GLN
1	A	59	ARG
1	A	82	THR
1	A	83	SER
1	A	90	MET
1	A	91	LEU
1	A	92	LYS
1	A	95	LEU
1	A	96	LYS
1	A	102	ARG
1	A	103	LYS
1	A	118	LEU
1	A	128	ASP
1	A	136	LEU
1	A	147	LYS
1	A	157	LEU
1	A	162	SER
1	A	165	ARG
1	A	169	LEU

Continued on next page...

Continued from previous page...

Mol	Chain	Res	Type
1	A	176	ASN
1	A	181	LEU
1	A	182	SER
1	A	190	LYS
1	A	195	LYS
1	A	198	LEU
1	A	211	ASN
1	A	212	LYS
1	A	229	ARG
1	A	230	ASP
1	A	236	SER
1	A	240	LEU
1	A	241	SER
1	A	261	ARG
1	A	263	GLN
1	A	266	VAL
1	A	267	LEU
1	A	271	LYS
1	B	23	ASP
1	B	31	GLN
1	B	32	LEU
1	B	37	THR
1	B	38	ARG
1	B	40	ARG
1	B	41	THR
1	B	43	GLU
1	B	45	LYS
1	B	49	LEU
1	B	54	GLN
1	B	59	ARG
1	B	73	MET
1	B	82	THR
1	B	83	SER
1	B	90	MET
1	B	91	LEU
1	B	92	LYS
1	B	95	LEU
1	B	96	LYS
1	B	102	ARG
1	B	103	LYS
1	B	118	LEU
1	B	128	ASP

Continued on next page...

Continued from previous page...

Mol	Chain	Res	Type
1	B	136	LEU
1	B	147	LYS
1	B	157	LEU
1	B	162	SER
1	B	165	ARG
1	B	169	LEU
1	B	176	ASN
1	B	181	LEU
1	B	182	SER
1	B	190	LYS
1	B	195	LYS
1	B	198	LEU
1	B	211	ASN
1	B	212	LYS
1	B	229	ARG
1	B	230	ASP
1	B	236	SER
1	B	240	LEU
1	B	241	SER
1	B	261	ARG
1	B	263	GLN
1	B	266	VAL
1	B	267	LEU
1	B	271	LYS
1	C	23	ASP
1	C	31	GLN
1	C	32	LEU
1	C	37	THR
1	C	38	ARG
1	C	40	ARG
1	C	41	THR
1	C	43	GLU
1	C	45	LYS
1	C	49	LEU
1	C	53	ARG
1	C	54	GLN
1	C	59	ARG
1	C	73	MET
1	C	82	THR
1	C	83	SER
1	C	90	MET
1	C	91	LEU

Continued on next page...

Continued from previous page...

Mol	Chain	Res	Type
1	C	92	LYS
1	C	95	LEU
1	C	96	LYS
1	C	102	ARG
1	C	103	LYS
1	C	118	LEU
1	C	128	ASP
1	C	136	LEU
1	C	147	LYS
1	C	157	LEU
1	C	162	SER
1	C	165	ARG
1	C	169	LEU
1	C	176	ASN
1	C	181	LEU
1	C	182	SER
1	C	190	LYS
1	C	195	LYS
1	C	198	LEU
1	C	211	ASN
1	C	212	LYS
1	C	229	ARG
1	C	230	ASP
1	C	236	SER
1	C	240	LEU
1	C	241	SER
1	C	261	ARG
1	C	263	GLN
1	C	266	VAL
1	C	267	LEU
1	C	271	LYS
1	C	291	THR
1	D	23	ASP
1	D	31	GLN
1	D	32	LEU
1	D	37	THR
1	D	38	ARG
1	D	40	ARG
1	D	41	THR
1	D	43	GLU
1	D	45	LYS
1	D	49	LEU

Continued on next page...

Continued from previous page...

Mol	Chain	Res	Type
1	D	53	ARG
1	D	54	GLN
1	D	59	ARG
1	D	71	SER
1	D	73	MET
1	D	82	THR
1	D	83	SER
1	D	90	MET
1	D	91	LEU
1	D	92	LYS
1	D	95	LEU
1	D	96	LYS
1	D	102	ARG
1	D	103	LYS
1	D	118	LEU
1	D	128	ASP
1	D	136	LEU
1	D	147	LYS
1	D	157	LEU
1	D	162	SER
1	D	165	ARG
1	D	169	LEU
1	D	176	ASN
1	D	181	LEU
1	D	182	SER
1	D	190	LYS
1	D	195	LYS
1	D	198	LEU
1	D	211	ASN
1	D	212	LYS
1	D	229	ARG
1	D	230	ASP
1	D	236	SER
1	D	240	LEU
1	D	241	SER
1	D	261	ARG
1	D	263	GLN
1	D	266	VAL
1	D	267	LEU
1	D	271	LYS

Some sidechains can be flipped to improve hydrogen bonding and reduce clashes. All (34) such sidechains are listed below:

Mol	Chain	Res	Type
1	A	31	GLN
1	A	159	ASN
1	A	174	HIS
1	A	176	ASN
1	A	191	ASN
1	A	210	ASN
1	A	211	ASN
1	A	264	HIS
1	B	31	GLN
1	B	159	ASN
1	B	174	HIS
1	B	176	ASN
1	B	191	ASN
1	B	210	ASN
1	B	211	ASN
1	B	264	HIS
1	C	31	GLN
1	C	159	ASN
1	C	174	HIS
1	C	176	ASN
1	C	191	ASN
1	C	210	ASN
1	C	211	ASN
1	C	264	HIS
1	D	31	GLN
1	D	138	ASN
1	D	159	ASN
1	D	174	HIS
1	D	176	ASN
1	D	191	ASN
1	D	210	ASN
1	D	211	ASN
1	D	263	GLN
1	D	264	HIS

5.3.3 RNA ⓘ

There are no RNA molecules in this entry.

5.4 Non-standard residues in protein, DNA, RNA chains ⓘ

There are no non-standard protein/DNA/RNA residues in this entry.

5.5 Carbohydrates [i](#)

There are no carbohydrates in this entry.

5.6 Ligand geometry [i](#)

8 ligands are modelled in this entry.

In the following table, the Counts columns list the number of bonds (or angles) for which Mogul statistics could be retrieved, the number of bonds (or angles) that are observed in the model and the number of bonds (or angles) that are defined in the chemical component dictionary. The Link column lists molecule types, if any, to which the group is linked. The Z score for a bond length (or angle) is the number of standard deviations the observed value is removed from the expected value. A bond length (or angle) with $|Z| > 2$ is considered an outlier worth inspection. RMSZ is the root-mean-square of all Z scores of the bond lengths (or angles).

Mol	Type	Chain	Res	Link	Bond lengths			Bond angles		
					Counts	RMSZ	# $ Z > 2$	Counts	RMSZ	# $ Z > 2$
3	SAM	A	293	-	21,29,29	1.01	1 (4%)	17,42,42	1.52	4 (23%)
2	ACT	A	294	-	1,3,3	0.41	0	0,3,3	0.00	-
3	SAM	B	1293	-	21,29,29	1.07	2 (9%)	17,42,42	1.36	2 (11%)
2	ACT	B	1294	-	1,3,3	0.16	0	0,3,3	0.00	-
3	SAM	C	2293	-	21,29,29	1.11	3 (14%)	17,42,42	1.33	2 (11%)
2	ACT	C	2294	-	1,3,3	1.32	0	0,3,3	0.00	-
3	SAM	D	3293	-	21,29,29	1.12	2 (9%)	17,42,42	1.39	2 (11%)
2	ACT	D	3294	-	1,3,3	0.32	0	0,3,3	0.00	-

In the following table, the Chirals column lists the number of chiral outliers, the number of chiral centers analysed, the number of these observed in the model and the number defined in the chemical component dictionary. Similar counts are reported in the Torsion and Rings columns. '-' means no outliers of that kind were identified.

Mol	Type	Chain	Res	Link	Chirals	Torsions	Rings
3	SAM	A	293	-	-	0/8/33/33	0/3/3/3
2	ACT	A	294	-	-	0/0/0/0	0/0/0/0
3	SAM	B	1293	-	-	0/8/33/33	0/3/3/3
2	ACT	B	1294	-	-	0/0/0/0	0/0/0/0
3	SAM	C	2293	-	-	0/8/33/33	0/3/3/3
2	ACT	C	2294	-	-	0/0/0/0	0/0/0/0
3	SAM	D	3293	-	-	0/8/33/33	0/3/3/3
2	ACT	D	3294	-	-	0/0/0/0	0/0/0/0

All (8) bond length outliers are listed below:

Mol	Chain	Res	Type	Atoms	Z	Observed(Å)	Ideal(Å)
3	D	3293	SAM	CG-CB	-3.20	1.48	1.52
3	B	1293	SAM	CG-CB	-2.82	1.48	1.52
3	A	293	SAM	CG-CB	-2.59	1.48	1.52
3	C	2293	SAM	CG-CB	-2.57	1.48	1.52
3	B	1293	SAM	C2-N3	2.06	1.35	1.32
3	C	2293	SAM	C4-N3	2.10	1.38	1.35
3	D	3293	SAM	C2-N3	2.10	1.35	1.32
3	C	2293	SAM	C2-N3	2.13	1.36	1.32

All (10) bond angle outliers are listed below:

Mol	Chain	Res	Type	Atoms	Z	Observed(°)	Ideal(°)
3	A	293	SAM	C4'-O4'-C1'	-3.61	105.75	109.72
3	B	1293	SAM	C4'-O4'-C1'	-2.90	106.53	109.72
3	C	2293	SAM	C4'-O4'-C1'	-2.26	107.23	109.72
3	A	293	SAM	O3'-C3'-C4'	-2.15	104.61	111.05
3	D	3293	SAM	C4'-O4'-C1'	-2.05	107.46	109.72
3	A	293	SAM	C1'-N9-C4	-2.05	123.85	126.94
3	B	1293	SAM	O2'-C2'-C3'	2.74	120.73	111.83
3	A	293	SAM	O2'-C2'-C3'	2.83	121.02	111.83
3	C	2293	SAM	O2'-C2'-C3'	2.86	121.14	111.83
3	D	3293	SAM	O2'-C2'-C3'	2.96	121.44	111.83

There are no chirality outliers.

There are no torsion outliers.

There are no ring outliers.

5 monomers are involved in 9 short contacts:

Mol	Chain	Res	Type	Clashes	Symm-Clashes
3	A	293	SAM	2	0
3	B	1293	SAM	3	0
3	C	2293	SAM	1	0
3	D	3293	SAM	1	0
2	D	3294	ACT	2	0

5.7 Other polymers ⓘ

There are no such residues in this entry.

5.8 Polymer linkage issues ⓘ

There are no chain breaks in this entry.

6 Fit of model and data ⓘ

6.1 Protein, DNA and RNA chains ⓘ

In the following table, the column labelled ‘#RSRZ> 2’ contains the number (and percentage) of RSRZ outliers, followed by percent RSRZ outliers for the chain as percentile scores relative to all X-ray entries and entries of similar resolution. The OWAB column contains the minimum, median, 95th percentile and maximum values of the occupancy-weighted average B-factor per residue. The column labelled ‘Q< 0.9’ lists the number of (and percentage) of residues with an average occupancy less than 0.9.

Mol	Chain	Analysed	<RSRZ>	#RSRZ>2	OWAB(Å ²)	Q<0.9
1	A	275/292 (94%)	0.28	12 (4%) 38 26	4, 19, 55, 97	0
1	B	275/292 (94%)	0.13	11 (4%) 42 30	7, 22, 56, 97	0
1	C	275/292 (94%)	0.31	15 (5%) 29 18	6, 24, 60, 97	0
1	D	275/292 (94%)	0.07	12 (4%) 38 26	3, 16, 52, 99	0
All	All	1100/1168 (94%)	0.20	50 (4%) 37 26	3, 21, 57, 99	0

All (50) RSRZ outliers are listed below:

Mol	Chain	Res	Type	RSRZ
1	C	231	GLY	20.1
1	A	231	GLY	19.3
1	A	230	ASP	13.8
1	C	230	ASP	9.9
1	A	232	ALA	9.5
1	A	233	PRO	7.6
1	A	47	TRP	7.5
1	B	230	ASP	7.3
1	C	229	ARG	6.5
1	A	229	ARG	6.3
1	B	228	GLY	6.0
1	C	232	ALA	5.9
1	C	233	PRO	5.4
1	C	228	GLY	5.1
1	C	126	ALA	4.6
1	D	230	ASP	4.3
1	C	226	GLY	4.1
1	A	128	ASP	4.0
1	B	231	GLY	3.9
1	B	292	GLY	3.9
1	D	190	LYS	3.8

Continued on next page...

Continued from previous page...

Mol	Chain	Res	Type	RSRZ
1	D	292	GLY	3.8
1	C	292	GLY	3.7
1	D	180	ILE	3.6
1	A	274	ARG	3.5
1	C	202	ILE	3.5
1	B	157	LEU	3.4
1	A	127	GLY	3.4
1	B	190	LYS	3.3
1	D	234	GLY	3.1
1	C	190	LYS	3.1
1	B	226	GLY	3.1
1	D	229	ARG	3.0
1	D	232	ALA	3.0
1	D	231	GLY	2.9
1	D	235	PHE	2.8
1	B	229	ARG	2.8
1	B	58	HIS	2.8
1	C	220	TYR	2.7
1	B	232	ALA	2.6
1	A	228	GLY	2.6
1	D	58	HIS	2.6
1	A	261	ARG	2.6
1	C	238	PHE	2.5
1	A	31	GLN	2.4
1	D	128	ASP	2.3
1	C	227	ALA	2.3
1	B	258	PHE	2.2
1	D	233	PRO	2.2
1	C	172	ILE	2.1

6.2 Non-standard residues in protein, DNA, RNA chains ⓘ

There are no non-standard protein/DNA/RNA residues in this entry.

6.3 Carbohydrates ⓘ

There are no carbohydrates in this entry.

6.4 Ligands

In the following table, the Atoms column lists the number of modelled atoms in the group and the number defined in the chemical component dictionary. LLDF column lists the quality of electron density of the group with respect to its neighbouring residues in protein, DNA or RNA chains. The B-factors column lists the minimum, median, 95th percentile and maximum values of B factors of atoms in the group. The column labelled 'Q< 0.9' lists the number of atoms with occupancy less than 0.9.

Mol	Type	Chain	Res	Atoms	RSCC	RSR	LLDF	B-factors(Å ²)	Q<0.9
2	ACT	D	3294	4/4	0.92	0.29	3.63	2,8,10,11	0
2	ACT	B	1294	4/4	0.96	0.24	1.96	14,20,23,28	0
2	ACT	C	2294	4/4	0.95	0.35	1.30	2,9,17,19	0
3	SAM	D	3293	27/27	0.94	0.21	1.13	2,24,35,35	0
3	SAM	B	1293	27/27	0.94	0.22	0.97	10,23,37,40	0
3	SAM	A	293	27/27	0.94	0.19	0.35	2,17,25,26	0
3	SAM	C	2293	27/27	0.94	0.17	0.11	15,25,36,41	0
2	ACT	A	294	4/4	0.96	0.16	-0.36	29,30,30,31	0

6.5 Other polymers

There are no such residues in this entry.