



Full wwPDB X-ray Structure Validation Report ⓘ

Jan 31, 2016 – 08:29 PM GMT

PDB ID : 1KJY
Title : Crystal Structure of Human G[alpha]i1 Bound to the GoLoco Motif of RGS14
Authors : Kimple, R.J.; Kimple, M.E.; Betts, L.; Sondek, J.; Siderovski, D.P.
Deposited on : 2001-12-05
Resolution : 2.70 Å(reported)

This is a Full wwPDB X-ray Structure Validation Report for a publicly released PDB entry.
We welcome your comments at validation@mail.wwpdb.org
A user guide is available at
<http://wwpdb.org/validation/2016/XrayValidationReportHelp>
with specific help available everywhere you see the ⓘ symbol.

The following versions of software and data (see [references ⓘ](#)) were used in the production of this report:

MolProbity : 4.02b-467
Mogul : 1.7 (RC4), CSD as536be (2015)
Xtriage (Phenix) : **NOT EXECUTED**
EDS : **NOT EXECUTED**
Percentile statistics : 20151230.v01 (using entries in the PDB archive December 30th 2015)
Ideal geometry (proteins) : Engh & Huber (2001)
Ideal geometry (DNA, RNA) : Parkinson et al. (1996)
Validation Pipeline (wwPDB-VP) : trunk26865

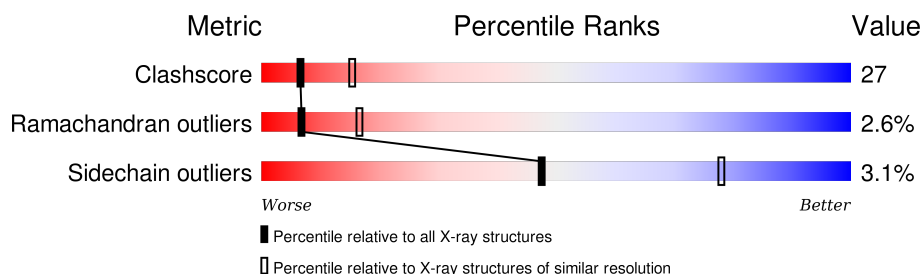
1 Overall quality at a glance

The following experimental techniques were used to determine the structure:

X-RAY DIFFRACTION

The reported resolution of this entry is 2.70 Å.

Percentile scores (ranging between 0-100) for global validation metrics of the entry are shown in the following graphic. The table shows the number of entries on which the scores are based.



Metric	Whole archive (#Entries)	Similar resolution (#Entries, resolution range(Å))
Clashscore	102246	2422 (2.70-2.70)
Ramachandran outliers	100387	2382 (2.70-2.70)
Sidechain outliers	100360	2382 (2.70-2.70)

The table below summarises the geometric issues observed across the polymeric chains and their fit to the electron density. The red, orange, yellow and green segments on the lower bar indicate the fraction of residues that contain outliers for ≥ 3 , 2, 1 and 0 types of geometric quality criteria. A grey segment represents the fraction of residues that are not modelled. The numeric value for each fraction is indicated below the corresponding segment, with a dot representing fractions $\leq 5\%$. The upper red bar (where present) indicates the fraction of residues that have poor fit to the electron density. The numeric value is given above the bar.

Note EDS was not executed.

Mol	Chain	Length	Quality of chain
1	A	325	
1	C	325	
2	B	36	
2	D	36	

2 Entry composition [i](#)

There are 6 unique types of molecules in this entry. The entry contains 5916 atoms, of which 0 are hydrogens and 0 are deuteriums.

In the tables below, the ZeroOcc column contains the number of atoms modelled with zero occupancy, the AltConf column contains the number of residues with at least one atom in alternate conformation and the Trace column contains the number of residues modelled with at most 2 atoms.

- Molecule 1 is a protein called GUANINE NUCLEOTIDE-BINDING PROTEIN G(I), ALPHA-1 SUBUNIT.

Mol	Chain	Residues	Atoms					ZeroOcc	AltConf	Trace
1	A	320	Total	C	N	O	S	0	0	0
			2551	1620	430	486	15			
1	C	318	Total	C	N	O	S	0	0	0
			2538	1611	428	484	15			

There are 2 discrepancies between the modelled and reference sequences:

Chain	Residue	Modelled	Actual	Comment	Reference
A	30	GLY	ALA	SEE REMARK 999	UNP P63096
C	1030	GLY	ALA	SEE REMARK 999	UNP P63096

- Molecule 2 is a protein called REGULATOR OF G-PROTEIN SIGNALING 14.

Mol	Chain	Residues	Atoms				ZeroOcc	AltConf	Trace
2	B	35	Total	C	N	O	0	0	0
			278	174	50	54			
2	D	34	Total	C	N	O	0	0	0
			270	168	49	53			

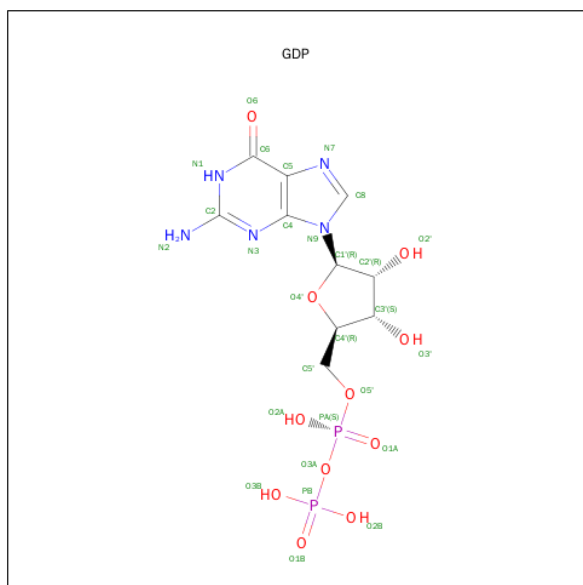
- Molecule 3 is MAGNESIUM ION (three-letter code: MG) (formula: Mg).

Mol	Chain	Residues	Atoms		ZeroOcc	AltConf
3	B	1	Total	Mg	0	0
			1	1		
3	C	1	Total	Mg	0	0
			1	1		

- Molecule 4 is CESIUM ION (three-letter code: CS) (formula: Cs).

Mol	Chain	Residues	Atoms	ZeroOcc	AltConf
4	A	7	Total Cs 7 7	0	0
4	D	1	Total Cs 1 1	0	0
4	C	7	Total Cs 7 7	0	0

- Molecule 5 is GUANOSINE-5'-DIPHOSPHATE (three-letter code: GDP) (formula: $C_{10}H_{15}N_5O_{11}P_2$).



Mol	Chain	Residues	Atoms	ZeroOcc	AltConf
5	C	1	Total C N O P 28 10 5 11 2	0	0
5	A	1	Total C N O P 28 10 5 11 2	0	0

- Molecule 6 is water.

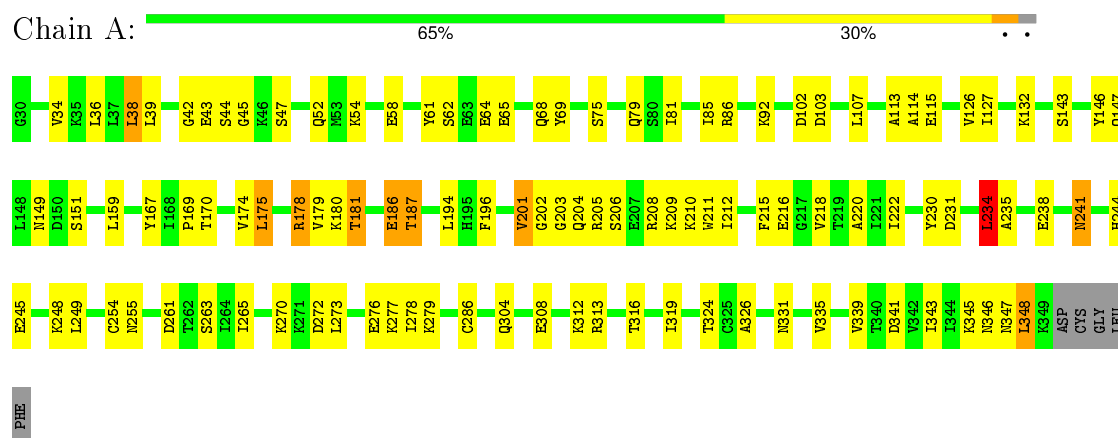
Mol	Chain	Residues	Atoms	ZeroOcc	AltConf
6	A	91	Total O 91 91	0	0
6	B	14	Total O 14 14	0	0
6	C	93	Total O 93 93	0	0
6	D	8	Total O 8 8	0	0

3 Residue-property plots

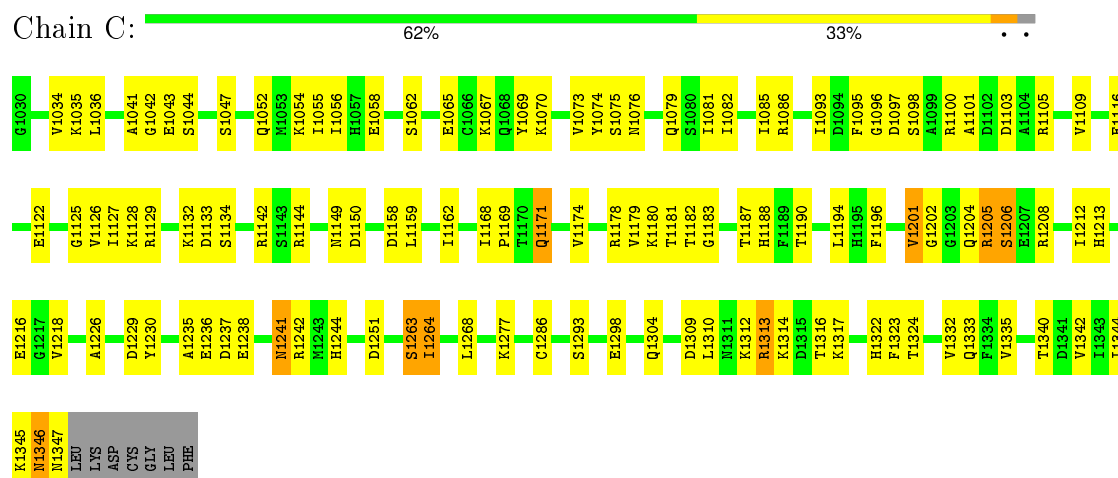
These plots are drawn for all protein, RNA and DNA chains in the entry. The first graphic for a chain summarises the proportions of errors displayed in the second graphic. The second graphic shows the sequence view annotated by issues in geometry and electron density. Residues are color-coded according to the number of geometric quality criteria for which they contain at least one outlier: green = 0, yellow = 1, orange = 2 and red = 3 or more. A red dot above a residue indicates a poor fit to the electron density ($RSRZ > 2$). Stretches of 2 or more consecutive residues without any outlier are shown as a green connector. Residues present in the sample, but not in the model, are shown in grey.

Note EDS was not executed.

- Molecule 1: GUANINE NUCLEOTIDE-BINDING PROTEIN G(I), ALPHA-1 SUBUNIT

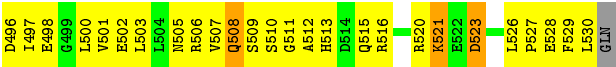


- Molecule 1: GUANINE NUCLEOTIDE-BINDING PROTEIN G(I), ALPHA-1 SUBUNIT



- Molecule 2: REGULATOR OF G-PROTEIN SIGNALING 14





● Molecule 2: REGULATOR OF G-PROTEIN SIGNALING 14



4 Data and refinement statistics

Xtriage (Phenix) and EDS were not executed - this section will therefore be incomplete.

Property	Value	Source
Space group	P 2 2 21	Depositor
Cell constants a, b, c, α , β , γ	69.51Å 82.04Å 187.24Å 90.00° 90.00° 90.00°	Depositor
Resolution (Å)	20.00 – 2.70	Depositor
% Data completeness (in resolution range)	99.0 (20.00-2.70)	Depositor
R_{merge}	0.11	Depositor
R_{sym}	0.09	Depositor
Refinement program	CNS 1.0	Depositor
R, R_{free}	0.238 , 0.299	Depositor
Estimated twinning fraction	No twinning to report.	Xtriage
Total number of atoms	5916	wwPDB-VP
Average B, all atoms (Å ²)	41.0	wwPDB-VP

5 Model quality [i](#)

5.1 Standard geometry [i](#)

Bond lengths and bond angles in the following residue types are not validated in this section: GDP, CS, MG

The Z score for a bond length (or angle) is the number of standard deviations the observed value is removed from the expected value. A bond length (or angle) with $|Z| > 5$ is considered an outlier worth inspection. RMSZ is the root-mean-square of all Z scores of the bond lengths (or angles).

Mol	Chain	Bond lengths		Bond angles	
		RMSZ	$\# Z > 5$	RMSZ	$\# Z > 5$
1	A	0.37	0/2597	0.61	1/3503 (0.0%)
1	C	0.38	0/2584	0.62	1/3485 (0.0%)
2	B	0.37	0/280	0.71	0/376
2	D	0.32	0/272	0.67	0/365
All	All	0.37	0/5733	0.62	2/7729 (0.0%)

There are no bond length outliers.

All (2) bond angle outliers are listed below:

Mol	Chain	Res	Type	Atoms	Z	Observed(°)	Ideal(°)
1	A	234	LEU	CA-CB-CG	5.38	127.67	115.30
1	C	1263	SER	N-CA-C	5.33	125.38	111.00

There are no chirality outliers.

There are no planarity outliers.

5.2 Too-close contacts [i](#)

In the following table, the Non-H and H(model) columns list the number of non-hydrogen atoms and hydrogen atoms in the chain respectively. The H(added) column lists the number of hydrogen atoms added and optimized by MolProbity. The Clashes column lists the number of clashes within the asymmetric unit, whereas Symm-Clashes lists symmetry related clashes.

Mol	Chain	Non-H	H(model)	H(added)	Clashes	Symm-Clashes
1	A	2551	0	2505	123	0
1	C	2538	0	2491	117	0
2	B	278	0	282	77	0
2	D	270	0	271	33	0
3	B	1	0	0	0	0

Continued on next page...

Continued from previous page...

Mol	Chain	Non-H	H(model)	H(added)	Clashes	Symm-Clashes
3	C	1	0	0	0	0
4	A	7	0	0	0	0
4	C	7	0	0	0	0
4	D	1	0	0	0	0
5	A	28	0	12	6	0
5	C	28	0	12	3	0
6	A	91	0	0	14	0
6	B	14	0	0	9	0
6	C	93	0	0	16	0
6	D	8	0	0	5	0
All	All	5916	0	5573	307	0

The all-atom clashscore is defined as the number of clashes found per 1000 atoms (including hydrogen atoms). The all-atom clashscore for this structure is 27.

All (307) close contacts within the same asymmetric unit are listed below, sorted by their clash magnitude.

Atom-1	Atom-2	Interatomic distance (Å)	Clash overlap (Å)
1:A:201:VAL:HB	2:B:506:ARG:NH2	1.65	1.10
1:C:1202:GLY:HA2	2:D:1508:GLN:HG2	1.41	1.01
1:C:1235:ALA:HB3	1:C:1238:GLU:HG3	1.48	0.95
1:A:211:TRP:HE1	2:B:503:LEU:HD21	1.33	0.94
1:C:1132:LYS:HB2	6:C:4120:HOH:O	1.69	0.92
1:A:205:ARG:HA	2:B:503:LEU:HD11	1.52	0.90
1:C:1127:ILE:HG22	1:C:1159:LEU:HD11	1.54	0.89
2:D:1521:LYS:H	2:D:1521:LYS:HD3	1.38	0.89
1:C:1313:ARG:HB3	1:C:1316:THR:HB	1.52	0.88
1:C:1056:ILE:HG23	1:C:1333:GLN:HE21	1.37	0.88
1:A:211:TRP:HE1	2:B:503:LEU:CD2	1.87	0.88
1:A:201:VAL:HB	2:B:506:ARG:HH22	1.40	0.87
1:C:1312:LYS:O	1:C:1313:ARG:HG3	1.77	0.84
2:B:528:GLU:C	2:B:530:LEU:H	1.78	0.83
2:B:521:LYS:HD3	2:B:521:LYS:N	1.95	0.81
2:D:1529:PHE:HB3	6:D:4151:HOH:O	1.82	0.80
1:A:347:ASN:HB3	6:A:4190:HOH:O	1.83	0.79
1:C:1212:ILE:O	1:C:1216:GLU:HG2	1.82	0.78
1:A:201:VAL:HB	2:B:506:ARG:HH21	1.48	0.78
2:B:513:HIS:C	2:B:515:GLN:H	1.82	0.77
2:B:513:HIS:C	2:B:515:GLN:N	2.36	0.75
1:A:205:ARG:HA	2:B:503:LEU:CD1	2.16	0.75
1:C:1201:VAL:HG12	1:C:1202:GLY:H	1.52	0.74

Continued on next page...

Continued from previous page...

Atom-1	Atom-2	Interatomic distance (Å)	Clash overlap (Å)
2:B:509:SER:N	6:B:4143:HOH:O	2.21	0.74
1:C:1074:TYR:HE1	1:C:1162:ILE:HG22	1.54	0.73
1:C:1035:LYS:HE2	1:C:1218:VAL:HG12	1.71	0.73
2:D:1521:LYS:H	2:D:1521:LYS:CD	2.02	0.72
1:A:54:LYS:HE2	1:A:187:THR:HG23	1.71	0.72
1:A:81:ILE:O	1:A:85:ILE:HG12	1.90	0.72
1:A:114:ALA:HB1	6:A:4211:HOH:O	1.88	0.72
1:C:1324:THR:HG22	1:C:1335:VAL:HG21	1.72	0.71
1:C:1241:ASN:HD22	1:C:1241:ASN:C	1.94	0.71
2:D:1522:GLU:HB2	6:D:4153:HOH:O	1.91	0.70
2:B:521:LYS:HD3	2:B:521:LYS:H	1.54	0.70
1:A:43:GLU:HA	5:A:356:GDP:H5"	1.73	0.69
1:C:1047:SER:HB3	5:C:355:GDP:PA	2.33	0.69
1:C:1086:ARG:HG3	1:C:1086:ARG:HH11	1.57	0.69
2:B:511:GLY:C	2:B:513:HIS:H	1.93	0.69
1:C:1230:TYR:O	1:C:1286:CYS:HB2	1.94	0.68
1:C:1212:ILE:HD11	2:D:1497:ILE:HG21	1.77	0.67
1:A:313:ARG:HB3	1:A:316:THR:HB	1.77	0.67
6:A:4189:HOH:O	2:B:512:ALA:HB2	1.93	0.66
1:C:1241:ASN:ND2	1:C:1244:HIS:H	1.93	0.66
1:C:1074:TYR:CE1	1:C:1162:ILE:HG22	2.31	0.66
1:A:235:ALA:HB3	1:A:238:GLU:HG2	1.78	0.65
1:C:1171:GLN:HA	1:C:1171:GLN:HE21	1.62	0.65
6:C:4045:HOH:O	2:D:1510:SER:HB2	1.96	0.65
1:A:132:LYS:HD2	6:A:4069:HOH:O	1.97	0.65
2:B:511:GLY:C	2:B:513:HIS:N	2.50	0.65
1:A:203:GLY:HA2	2:B:507:VAL:HG22	1.78	0.65
1:C:1100:ARG:HG3	1:C:1133:ASP:OD1	1.97	0.64
2:B:516:ARG:NH1	6:B:4166:HOH:O	2.30	0.64
6:A:4152:HOH:O	2:B:501:VAL:HG11	1.98	0.64
2:B:528:GLU:O	2:B:530:LEU:N	2.31	0.64
1:C:1323:PHE:HD1	6:C:4111:HOH:O	1.78	0.64
1:A:186:GLU:HG3	1:A:187:THR:N	2.12	0.64
1:C:1103:ASP:OD1	1:C:1129:ARG:NH1	2.30	0.64
1:C:1204:GLN:C	1:C:1206:SER:H	2.02	0.63
2:D:1509:SER:C	2:D:1511:GLY:H	2.01	0.63
2:B:513:HIS:CD2	2:B:516:ARG:HD2	2.33	0.63
6:A:4152:HOH:O	2:B:501:VAL:HG21	1.99	0.63
1:C:1202:GLY:CA	2:D:1508:GLN:HG2	2.24	0.62
1:C:1075:SER:O	1:C:1079:GLN:HG3	1.99	0.62
2:D:1527:PRO:HG2	2:D:1529:PHE:CD1	2.34	0.62

Continued on next page...

Continued from previous page...

Atom-1	Atom-2	Interatomic distance (Å)	Clash overlap (Å)
2:D:1514:ASP:OD1	2:D:1515:GLN:HG3	1.98	0.62
1:A:272:ASP:O	1:A:276:GLU:HG2	2.00	0.62
1:A:178:ARG:HH22	2:B:513:HIS:HB3	1.65	0.62
1:A:39:LEU:HD23	2:B:506:ARG:NH1	2.15	0.62
1:C:1043:GLU:OE2	1:C:1178:ARG:NH2	2.33	0.62
1:A:201:VAL:HG12	1:A:202:GLY:H	1.64	0.61
2:B:528:GLU:C	2:B:530:LEU:N	2.51	0.61
1:A:230:TYR:O	1:A:286:CYS:HB2	2.01	0.61
1:A:234:LEU:HD23	1:A:234:LEU:H	1.65	0.60
1:A:178:ARG:HH11	1:A:178:ARG:HB3	1.66	0.60
1:C:1035:LYS:CE	1:C:1218:VAL:HG12	2.31	0.60
1:A:254:CYS:SG	1:A:319:ILE:HD11	2.41	0.60
2:D:1509:SER:O	2:D:1511:GLY:N	2.34	0.60
1:A:38:LEU:HD12	1:A:222:ILE:HB	1.83	0.60
1:A:178:ARG:NH2	2:B:513:HIS:HB3	2.17	0.59
1:A:147:GLN:HB3	2:B:512:ALA:HA	1.83	0.59
1:A:127:ILE:HG22	1:A:159:LEU:HD11	1.84	0.59
1:C:1093:ILE:HD11	1:C:1142:ARG:NH1	2.16	0.59
1:C:1342:VAL:O	1:C:1346:ASN:HB2	2.03	0.59
1:A:54:LYS:HE2	1:A:187:THR:CG2	2.33	0.59
1:A:45:GLY:HA2	5:A:356:GDP:O2A	2.03	0.59
1:C:1122:GLU:O	1:C:1126:VAL:HG23	2.02	0.59
1:A:75:SER:O	1:A:79:GLN:HG3	2.03	0.58
1:C:1238:GLU:HG2	6:C:4097:HOH:O	2.02	0.58
2:B:503:LEU:O	2:B:507:VAL:HB	2.03	0.58
1:A:215:PHE:O	1:A:218:VAL:HG13	2.04	0.58
1:C:1095:PHE:C	1:C:1097:ASP:H	2.05	0.58
1:A:265:ILE:HG12	1:A:339:VAL:HG13	1.85	0.57
1:C:1100:ARG:HD2	6:C:4036:HOH:O	2.03	0.57
1:A:241:ASN:ND2	1:A:244:HIS:H	2.02	0.57
2:D:1510:SER:N	6:D:4140:HOH:O	2.36	0.57
2:D:1513:HIS:O	2:D:1515:GLN:N	2.29	0.57
2:D:1527:PRO:HB2	6:D:4151:HOH:O	2.03	0.57
1:A:249:LEU:HD22	2:B:505:ASN:HD22	1.70	0.57
1:C:1096:GLY:HA3	1:C:1134:SER:OG	2.05	0.56
1:A:86:ARG:HH11	1:A:86:ARG:HG3	1.70	0.56
1:A:39:LEU:HD23	2:B:506:ARG:HH12	1.70	0.56
1:A:180:LYS:HD3	6:B:4208:HOH:O	2.05	0.56
1:A:54:LYS:HA	1:A:58:GLU:HB2	1.87	0.56
1:A:132:LYS:HD3	1:A:132:LYS:C	2.26	0.56
1:C:1034:VAL:HG12	1:C:1036:LEU:CD1	2.36	0.56

Continued on next page...

Continued from previous page...

Atom-1	Atom-2	Interatomic distance (Å)	Clash overlap (Å)
1:A:43:GLU:HG3	2:B:512:ALA:HB3	1.88	0.56
2:B:515:GLN:HA	6:B:4149:HOH:O	2.06	0.56
1:C:1158:ASP:O	1:C:1162:ILE:HG12	2.06	0.56
1:A:231:ASP:OD2	1:A:277:LYS:HD3	2.05	0.56
1:A:346:ASN:C	1:A:348:LEU:H	2.09	0.55
1:A:265:ILE:N	1:A:265:ILE:HD12	2.21	0.55
1:A:313:ARG:HB3	1:A:316:THR:CB	2.36	0.55
1:A:180:LYS:HA	6:A:4145:HOH:O	2.06	0.55
1:C:1208:ARG:O	1:C:1212:ILE:HG12	2.06	0.55
1:C:1277:LYS:HE3	6:C:4062:HOH:O	2.06	0.55
2:B:510:SER:HA	2:B:513:HIS:CE1	2.42	0.55
1:A:43:GLU:OE1	2:B:513:HIS:ND1	2.40	0.55
1:A:44:SER:N	5:A:356:GDP:O3B	2.40	0.54
1:C:1201:VAL:HG12	1:C:1202:GLY:N	2.20	0.54
1:A:203:GLY:CA	2:B:507:VAL:HG22	2.38	0.54
1:A:205:ARG:HG3	1:A:205:ARG:O	2.08	0.54
1:C:1316:THR:HG22	1:C:1317:LYS:HG2	1.90	0.54
1:C:1236:GLU:HG2	6:C:4200:HOH:O	2.06	0.54
1:C:1205:ARG:O	1:C:1206:SER:C	2.46	0.54
1:A:143:SER:HA	1:A:146:TYR:CE1	2.44	0.53
1:C:1345:LYS:C	1:C:1347:ASN:H	2.12	0.53
1:C:1075:SER:OG	2:D:1519:LEU:N	2.42	0.53
1:A:304:GLN:O	1:A:308:GLU:HG3	2.09	0.53
1:A:167:TYR:CE2	1:A:169:PRO:HG3	2.45	0.53
1:C:1086:ARG:HD3	2:D:1527:PRO:HB3	1.91	0.52
1:C:1067:LYS:NZ	1:C:1168:ILE:HD13	2.23	0.52
1:A:220:ALA:HB2	1:A:343:ILE:HD11	1.91	0.52
1:A:324:THR:HG22	1:A:335:VAL:HG21	1.92	0.52
1:C:1081:ILE:O	1:C:1085:ILE:HG12	2.09	0.52
2:D:1508:GLN:NE2	6:D:4186:HOH:O	2.43	0.52
2:D:1521:LYS:N	2:D:1521:LYS:CD	2.71	0.52
1:A:65:GLU:HA	1:A:68:GLN:HG2	1.92	0.52
2:B:501:VAL:HG12	2:B:505:ASN:ND2	2.25	0.52
1:A:249:LEU:HD11	2:B:502:GLU:HG3	1.90	0.52
6:A:4189:HOH:O	2:B:509:SER:HA	2.10	0.51
1:C:1201:VAL:C	6:C:4109:HOH:O	2.49	0.51
1:A:81:ILE:HG23	1:A:107:LEU:HD21	1.90	0.51
1:A:179:VAL:O	2:B:516:ARG:HD3	2.10	0.51
1:C:1042:GLY:O	1:C:1043:GLU:HB2	2.10	0.51
1:A:39:LEU:CD2	2:B:506:ARG:NH1	2.74	0.51
1:A:211:TRP:HH2	2:B:506:ARG:CZ	2.24	0.51

Continued on next page...

Continued from previous page...

Atom-1	Atom-2	Interatomic distance (Å)	Clash overlap (Å)
1:A:61:TYR:HE2	1:A:69:TYR:HH	1.56	0.51
1:A:208:ARG:O	1:A:212:ILE:HG12	2.11	0.51
1:A:34:VAL:HG12	1:A:36:LEU:HD13	1.93	0.51
2:B:520:ARG:HG2	2:B:523:ASP:OD2	2.12	0.50
1:A:326:ALA:HB3	5:A:356:GDP:N7	2.26	0.50
1:C:1086:ARG:NH1	1:C:1086:ARG:HG3	2.25	0.50
1:A:181:THR:CG2	6:A:4068:HOH:O	2.59	0.50
1:C:1322:HIS:HA	6:C:4111:HOH:O	2.11	0.50
1:C:1190:THR:HA	1:C:1194:LEU:O	2.12	0.50
2:B:513:HIS:NE2	2:B:516:ARG:HD2	2.26	0.50
1:C:1125:GLY:O	1:C:1129:ARG:HB2	2.12	0.50
1:C:1100:ARG:O	1:C:1103:ASP:HB2	2.12	0.50
1:A:211:TRP:HH2	2:B:506:ARG:NH2	2.10	0.50
1:C:1035:LYS:CD	1:C:1218:VAL:HG12	2.42	0.50
1:A:248:LYS:HG2	6:A:4152:HOH:O	2.11	0.49
1:A:64:GLU:O	1:A:68:GLN:HG2	2.12	0.49
1:A:102:ASP:HA	6:A:4203:HOH:O	2.11	0.49
2:B:509:SER:CB	6:B:4143:HOH:O	2.59	0.49
1:C:1043:GLU:CD	1:C:1178:ARG:HH22	2.14	0.49
1:A:241:ASN:HD22	1:A:241:ASN:C	2.15	0.49
1:A:341:ASP:O	1:A:345:LYS:HG2	2.12	0.49
1:C:1116:GLU:HA	6:C:4017:HOH:O	2.12	0.49
1:A:54:LYS:O	1:A:58:GLU:HB2	2.13	0.49
1:A:179:VAL:O	2:B:516:ARG:HG2	2.13	0.48
2:B:511:GLY:O	2:B:513:HIS:N	2.46	0.48
1:C:1202:GLY:N	2:D:1508:GLN:HE21	2.12	0.48
1:C:1076:ASN:OD1	1:C:1178:ARG:HG3	2.13	0.48
2:D:1509:SER:C	2:D:1511:GLY:N	2.67	0.48
1:C:1268:LEU:CD1	1:C:1304:GLN:HB2	2.43	0.48
1:C:1313:ARG:HB2	6:C:4064:HOH:O	2.13	0.48
2:B:513:HIS:O	2:B:513:HIS:CD2	2.66	0.48
2:B:526:LEU:HD23	2:B:527:PRO:N	2.29	0.48
2:D:1527:PRO:O	2:D:1529:PHE:N	2.42	0.48
1:C:1242:ARG:NE	6:C:4045:HOH:O	2.44	0.48
1:A:212:ILE:O	1:A:216:GLU:HG3	2.14	0.48
1:C:1052:GLN:OE1	1:C:1052:GLN:HA	2.14	0.48
1:C:1054:LYS:HA	1:C:1058:GLU:HB2	1.94	0.48
1:C:1293:SER:OG	1:C:1298:GLU:OE2	2.25	0.48
1:C:1127:ILE:CG2	1:C:1159:LEU:HD11	2.33	0.48
1:A:241:ASN:O	1:A:245:GLU:HG3	2.13	0.48
1:C:1062:SER:OG	1:C:1065:GLU:HG3	2.14	0.48

Continued on next page...

Continued from previous page...

Atom-1	Atom-2	Interatomic distance (Å)	Clash overlap (Å)
1:A:201:VAL:CB	2:B:506:ARG:HH22	2.18	0.47
2:B:513:HIS:CD2	2:B:516:ARG:HB2	2.49	0.47
1:C:1052:GLN:HB3	1:C:1332:VAL:HG11	1.95	0.47
1:A:178:ARG:HB3	2:B:516:ARG:HE	1.78	0.47
2:D:1527:PRO:HG2	2:D:1529:PHE:HD1	1.78	0.47
1:A:52:GLN:NE2	1:A:175:LEU:HD11	2.30	0.47
1:A:179:VAL:O	2:B:516:ARG:CG	2.63	0.47
1:C:1241:ASN:ND2	1:C:1241:ASN:C	2.67	0.47
1:C:1043:GLU:HG2	2:D:1511:GLY:HA3	1.95	0.47
1:C:1229:ASP:OD2	1:C:1242:ARG:NH2	2.48	0.47
2:B:501:VAL:CG1	2:B:505:ASN:HD21	2.28	0.47
2:B:497:ILE:O	2:B:500:LEU:HB3	2.14	0.47
1:A:276:GLU:HA	1:A:279:LYS:HE2	1.96	0.47
1:A:62:SER:OG	1:A:65:GLU:HG3	2.14	0.47
1:A:206:SER:HB3	1:A:210:LYS:HB2	1.97	0.47
1:C:1251:ASP:HB2	1:C:1310:LEU:HD13	1.97	0.46
1:A:43:GLU:N	5:A:356:GDP:O3B	2.48	0.46
2:B:526:LEU:CD2	2:B:530:LEU:HA	2.45	0.46
1:C:1069:TYR:CD1	1:C:1174:VAL:HG13	2.51	0.46
2:B:496:ASP:CG	2:B:497:ILE:H	2.18	0.46
2:D:1502:GLU:HB3	2:D:1506:ARG:HH12	1.79	0.46
1:C:1043:GLU:HA	5:C:355:GDP:H5"	1.97	0.46
1:A:313:ARG:CB	1:A:316:THR:HB	2.44	0.46
1:A:181:THR:HG23	6:A:4068:HOH:O	2.15	0.46
2:B:498:GLU:HG2	6:B:4184:HOH:O	2.13	0.46
1:C:1241:ASN:HD22	1:C:1244:HIS:H	1.61	0.46
1:A:54:LYS:HG2	1:A:187:THR:HG21	1.98	0.46
1:C:1149:ASN:HB2	1:C:1178:ARG:CZ	2.46	0.46
1:A:249:LEU:HB2	2:B:505:ASN:ND2	2.31	0.46
1:A:255:ASN:CG	1:A:312:LYS:HG2	2.36	0.46
1:A:170:THR:O	1:A:174:VAL:HG23	2.15	0.46
2:B:521:LYS:CD	2:B:521:LYS:H	2.27	0.46
1:C:1204:GLN:C	1:C:1206:SER:N	2.68	0.45
1:C:1100:ARG:HG3	1:C:1133:ASP:CG	2.37	0.45
1:A:42:GLY:N	2:B:509:SER:OG	2.48	0.45
2:B:513:HIS:HD2	2:B:516:ARG:HB2	1.80	0.45
2:B:509:SER:C	2:B:511:GLY:N	2.69	0.45
1:A:149:ASN:OD1	1:A:151:SER:HB2	2.17	0.45
2:B:508:GLN:HA	6:B:4130:HOH:O	2.17	0.45
1:C:1055:ILE:HG23	1:C:1171:GLN:OE1	2.16	0.45
1:A:132:LYS:HD3	1:A:132:LYS:O	2.16	0.45

Continued on next page...

Continued from previous page...

Atom-1	Atom-2	Interatomic distance (Å)	Clash overlap (Å)
1:C:1070:LYS:HG3	1:C:1169:PRO:HD3	1.98	0.45
1:A:205:ARG:CG	1:A:205:ARG:O	2.65	0.45
1:C:1183:GLY:H	1:C:1204:GLN:NE2	2.14	0.45
1:C:1101:ALA:HB1	6:C:4079:HOH:O	2.16	0.45
1:C:1188:HIS:HA	1:C:1196:PHE:O	2.17	0.44
1:A:42:GLY:O	1:A:43:GLU:HB2	2.17	0.44
1:C:1095:PHE:C	1:C:1097:ASP:N	2.71	0.44
1:C:1179:VAL:O	2:D:1516:ARG:HD3	2.18	0.44
1:A:47:SER:HB3	5:A:356:GDP:PA	2.58	0.44
1:C:1213:HIS:HA	1:C:1216:GLU:HG3	1.99	0.44
2:B:501:VAL:HG12	2:B:505:ASN:HD21	1.81	0.44
1:C:1054:LYS:O	1:C:1058:GLU:HB2	2.17	0.44
1:C:1309:ASP:HA	1:C:1314:LYS:HE3	1.99	0.44
1:C:1128:LYS:HB2	1:C:1159:LEU:HD13	1.99	0.44
1:C:1056:ILE:CG2	1:C:1333:GLN:HE21	2.20	0.44
2:D:1502:GLU:HB3	2:D:1506:ARG:NH1	2.33	0.44
1:C:1105:ARG:O	1:C:1109:VAL:HG23	2.17	0.44
1:A:331:ASN:O	1:A:335:VAL:HG23	2.18	0.44
1:C:1081:ILE:HG23	1:C:1082:ILE:N	2.33	0.44
1:C:1054:LYS:HE3	1:C:1187:THR:CG2	2.48	0.44
1:C:1181:THR:HB	6:C:4105:HOH:O	2.17	0.44
1:C:1041:ALA:HA	2:D:1507:VAL:O	2.18	0.44
1:A:277:LYS:O	1:A:279:LYS:N	2.51	0.43
1:A:34:VAL:HG21	1:A:194:LEU:HD13	1.99	0.43
1:A:220:ALA:HB2	1:A:263:SER:HB2	2.00	0.43
2:B:496:ASP:N	6:B:4160:HOH:O	2.51	0.43
2:B:510:SER:CA	2:B:513:HIS:CE1	3.01	0.43
1:C:1052:GLN:HG3	1:C:1332:VAL:HG21	2.01	0.43
1:A:39:LEU:HA	2:B:506:ARG:HH11	1.82	0.43
1:C:1226:ALA:HB3	1:C:1229:ASP:OD2	2.19	0.43
1:C:1204:GLN:O	1:C:1206:SER:N	2.52	0.43
1:C:1235:ALA:HB3	1:C:1238:GLU:CG	2.35	0.43
1:A:43:GLU:CG	2:B:512:ALA:HB3	2.48	0.42
1:A:178:ARG:NH1	2:B:516:ARG:HE	2.17	0.42
1:A:34:VAL:HG11	1:A:196:PHE:CE2	2.55	0.42
1:C:1093:ILE:HD11	1:C:1142:ARG:HH11	1.84	0.42
1:C:1069:TYR:O	1:C:1073:VAL:HG23	2.20	0.42
1:A:92:LYS:HG3	1:A:92:LYS:O	2.18	0.42
1:A:178:ARG:HH11	1:A:178:ARG:CB	2.31	0.42
1:A:347:ASN:O	1:A:348:LEU:C	2.58	0.42
1:A:270:LYS:HG2	1:A:273:LEU:HD12	2.02	0.42

Continued on next page...

Continued from previous page...

Atom-1	Atom-2	Interatomic distance (Å)	Clash overlap (Å)
1:C:1263:SER:O	1:C:1264:ILE:CB	2.68	0.42
1:C:1263:SER:O	1:C:1264:ILE:HB	2.20	0.42
1:C:1042:GLY:O	1:C:1043:GLU:CB	2.66	0.42
1:A:86:ARG:NH1	1:A:86:ARG:HG3	2.33	0.42
1:A:205:ARG:CA	2:B:503:LEU:HD11	2.37	0.42
1:A:347:ASN:C	6:A:4190:HOH:O	2.57	0.42
1:C:1213:HIS:HA	1:C:1216:GLU:CG	2.49	0.42
1:C:1044:SER:N	5:C:355:GDP:O3B	2.52	0.42
1:A:234:LEU:HB2	1:A:238:GLU:HG3	2.01	0.41
1:C:1201:VAL:HA	6:C:4109:HOH:O	2.21	0.41
1:A:115:GLU:O	1:A:115:GLU:HG3	2.21	0.41
2:B:507:VAL:O	2:B:510:SER:N	2.47	0.41
1:A:103:ASP:O	1:A:107:LEU:N	2.53	0.41
2:D:1520:ARG:O	2:D:1521:LYS:C	2.58	0.41
2:B:507:VAL:O	2:B:509:SER:N	2.53	0.41
1:C:1235:ALA:C	1:C:1237:ASP:H	2.23	0.41
1:A:277:LYS:C	1:A:279:LYS:N	2.74	0.41
1:A:65:GLU:O	1:A:68:GLN:HB2	2.20	0.41
1:A:206:SER:CB	1:A:210:LYS:HD2	2.50	0.41
2:B:508:GLN:HG3	6:B:4180:HOH:O	2.20	0.41
2:D:1520:ARG:O	2:D:1522:GLU:N	2.54	0.41
2:D:1496:ASP:CG	2:D:1497:ILE:H	2.23	0.41
2:B:521:LYS:CD	2:B:521:LYS:N	2.73	0.41
1:C:1312:LYS:HD3	1:C:1312:LYS:HA	1.74	0.41
1:C:1182:THR:HA	1:C:1204:GLN:HE21	1.85	0.41
1:A:220:ALA:HB2	1:A:343:ILE:CD1	2.51	0.41
1:A:248:LYS:HE2	6:A:4152:HOH:O	2.21	0.41
1:C:1340:THR:O	1:C:1344:ILE:HG13	2.21	0.41
1:C:1180:LYS:HE3	1:C:1180:LYS:HB2	1.90	0.41
1:A:249:LEU:HD13	2:B:501:VAL:HG12	2.03	0.40
2:B:530:LEU:C	2:B:530:LEU:HD23	2.42	0.40
1:C:1043:GLU:HB2	1:C:1242:ARG:HH22	1.86	0.40
1:A:103:ASP:HB3	1:A:126:VAL:HG13	2.03	0.40
1:C:1236:GLU:HG3	6:C:4031:HOH:O	2.21	0.40
1:C:1067:LYS:NZ	1:C:1168:ILE:CD1	2.84	0.40
2:D:1507:VAL:O	2:D:1507:VAL:HG12	2.21	0.40
1:A:265:ILE:H	1:A:265:ILE:HD12	1.84	0.40
1:C:1178:ARG:HD3	2:D:1515:GLN:O	2.21	0.40

There are no symmetry-related clashes.

5.3 Torsion angles

5.3.1 Protein backbone

In the following table, the Percentiles column shows the percent Ramachandran outliers of the chain as a percentile score with respect to all X-ray entries followed by that with respect to entries of similar resolution.

The Analysed column shows the number of residues for which the backbone conformation was analysed, and the total number of residues.

Mol	Chain	Analysed	Favoured	Allowed	Outliers	Percentiles	
1	A	318/325 (98%)	290 (91%)	23 (7%)	5 (2%)	12	30
1	C	316/325 (97%)	285 (90%)	24 (8%)	7 (2%)	8	22
2	B	33/36 (92%)	26 (79%)	5 (15%)	2 (6%)	2	3
2	D	32/36 (89%)	23 (72%)	5 (16%)	4 (12%)	0	0
All	All	699/722 (97%)	624 (89%)	57 (8%)	18 (3%)	7	16

All (18) Ramachandran outliers are listed below:

Mol	Chain	Res	Type
1	C	1313	ARG
2	D	1510	SER
2	D	1514	ASP
1	A	113	ALA
2	B	508	GLN
2	B	529	PHE
1	C	1098	SER
1	C	1201	VAL
1	C	1206	SER
1	C	1205	ARG
2	D	1521	LYS
2	D	1528	GLU
1	A	209	LYS
1	A	204	GLN
1	C	1264	ILE
1	C	1150	ASP
1	A	201	VAL
1	A	278	ILE

5.3.2 Protein sidechains ⓘ

In the following table, the Percentiles column shows the percent sidechain outliers of the chain as a percentile score with respect to all X-ray entries followed by that with respect to entries of similar resolution.

The Analysed column shows the number of residues for which the sidechain conformation was analysed, and the total number of residues.

Mol	Chain	Analysed	Rotameric	Outliers	Percentiles	
1	A	272/281 (97%)	262 (96%)	10 (4%)	41	72
1	C	271/281 (96%)	267 (98%)	4 (2%)	72	91
2	B	31/32 (97%)	29 (94%)	2 (6%)	21	46
2	D	30/32 (94%)	27 (90%)	3 (10%)	9	22
All	All	604/626 (96%)	585 (97%)	19 (3%)	47	78

All (19) residues with a non-rotameric sidechain are listed below:

Mol	Chain	Res	Type
1	A	38	LEU
1	A	175	LEU
1	A	178	ARG
1	A	181	THR
1	A	186	GLU
1	A	187	THR
1	A	234	LEU
1	A	241	ASN
1	A	261	ASP
1	A	348	LEU
2	B	521	LYS
2	B	523	ASP
1	C	1144	ARG
1	C	1171	GLN
1	C	1241	ASN
1	C	1346	ASN
2	D	1503	LEU
2	D	1521	LYS
2	D	1529	PHE

Some sidechains can be flipped to improve hydrogen bonding and reduce clashes. All (17) such sidechains are listed below:

Mol	Chain	Res	Type
1	A	106	GLN
1	A	147	GLN
1	A	172	GLN
1	A	241	ASN
1	A	304	GLN
1	A	333	GLN
2	B	505	ASN
2	B	508	GLN
1	C	1057	HIS
1	C	1106	GLN
1	C	1147	GLN
1	C	1171	GLN
1	C	1172	GLN
1	C	1204	GLN
1	C	1241	ASN
1	C	1333	GLN
2	D	1508	GLN

5.3.3 RNA [i](#)

There are no RNA molecules in this entry.

5.4 Non-standard residues in protein, DNA, RNA chains [i](#)

There are no non-standard protein/DNA/RNA residues in this entry.

5.5 Carbohydrates [i](#)

There are no carbohydrates in this entry.

5.6 Ligand geometry [i](#)

Of 19 ligands modelled in this entry, 17 are monoatomic - leaving 2 for Mogul analysis.

In the following table, the Counts columns list the number of bonds (or angles) for which Mogul statistics could be retrieved, the number of bonds (or angles) that are observed in the model and the number of bonds (or angles) that are defined in the chemical component dictionary. The Link column lists molecule types, if any, to which the group is linked. The Z score for a bond length (or angle) is the number of standard deviations the observed value is removed from the expected value. A bond length (or angle) with $|Z| > 2$ is considered an outlier worth inspection. RMSZ is the root-mean-square of all Z scores of the bond lengths (or angles).

Mol	Type	Chain	Res	Link	Bond lengths			Bond angles		
					Counts	RMSZ	# Z > 2	Counts	RMSZ	# Z > 2
5	GDP	A	356	3	23,30,30	1.62	5 (21%)	30,47,47	3.32	14 (46%)
5	GDP	C	355	3	23,30,30	1.67	5 (21%)	30,47,47	3.34	16 (53%)

In the following table, the Chirals column lists the number of chiral outliers, the number of chiral centers analysed, the number of these observed in the model and the number defined in the chemical component dictionary. Similar counts are reported in the Torsion and Rings columns. '-' means no outliers of that kind were identified.

Mol	Type	Chain	Res	Link	Chirals	Torsions	Rings
5	GDP	A	356	3	-	0/12/32/32	0/3/3/3
5	GDP	C	355	3	-	0/12/32/32	0/3/3/3

All (10) bond length outliers are listed below:

Mol	Chain	Res	Type	Atoms	Z	Observed(Å)	Ideal(Å)
5	C	355	GDP	C8-N7	-2.83	1.29	1.34
5	A	356	GDP	PA-O2A	-2.24	1.45	1.54
5	A	356	GDP	C8-N7	-2.12	1.30	1.34
5	C	355	GDP	PA-O2A	-2.06	1.46	1.54
5	A	356	GDP	C5'-C4'	2.07	1.58	1.51
5	C	355	GDP	O4'-C1'	2.14	1.43	1.41
5	A	356	GDP	O4'-C1'	2.33	1.44	1.41
5	C	355	GDP	C5'-C4'	2.48	1.59	1.51
5	C	355	GDP	C6-N1	4.71	1.41	1.33
5	A	356	GDP	C6-N1	5.01	1.42	1.33

All (30) bond angle outliers are listed below:

Mol	Chain	Res	Type	Atoms	Z	Observed(°)	Ideal(°)
5	C	355	GDP	C5-C6-N1	-8.11	112.50	123.59
5	A	356	GDP	C5-C6-N1	-7.84	112.88	123.59
5	A	356	GDP	O5'-PA-O1A	-7.67	79.84	109.62
5	C	355	GDP	O5'-PA-O1A	-7.58	80.19	109.62
5	A	356	GDP	O3A-PA-O5'	-5.27	88.94	102.94
5	C	355	GDP	O3A-PA-O5'	-4.61	90.69	102.94
5	A	356	GDP	C1'-N9-C4	-3.95	120.98	126.94
5	C	355	GDP	O4'-C4'-C3'	-3.68	97.74	105.15
5	C	355	GDP	C1'-N9-C4	-3.58	121.55	126.94
5	A	356	GDP	O4'-C4'-C3'	-3.32	98.45	105.15
5	A	356	GDP	C6-C5-C4	-3.18	117.09	120.90
5	C	355	GDP	O2A-PA-O5'	-3.02	93.23	108.46
5	C	355	GDP	C6-C5-C4	-3.00	117.31	120.90

Continued on next page...

Continued from previous page...

Mol	Chain	Res	Type	Atoms	Z	Observed(°)	Ideal(°)
5	A	356	GDP	N3-C2-N1	-2.95	122.94	127.44
5	A	356	GDP	PA-O3A-PB	-2.76	123.41	132.67
5	C	355	GDP	N3-C2-N1	-2.75	123.26	127.44
5	A	356	GDP	O2A-PA-O5'	-2.52	95.76	108.46
5	C	355	GDP	O4'-C1'-N9	-2.51	102.84	108.10
5	C	355	GDP	PA-O3A-PB	-2.32	124.89	132.67
5	C	355	GDP	O3B-PB-O2B	-2.01	99.72	107.38
5	A	356	GDP	C4'-O4'-C1'	2.77	112.76	109.72
5	C	355	GDP	O3B-PB-O3A	2.78	117.70	105.09
5	A	356	GDP	O2A-PA-O1A	2.90	128.24	112.53
5	A	356	GDP	O3B-PB-O3A	3.08	119.05	105.09
5	C	355	GDP	O2A-PA-O1A	3.09	129.30	112.53
5	C	355	GDP	C4'-O4'-C1'	3.11	113.14	109.72
5	A	356	GDP	O2A-PA-O3A	5.47	129.92	105.09
5	C	355	GDP	O2A-PA-O3A	5.64	130.69	105.09
5	A	356	GDP	C6-N1-C2	6.43	124.86	115.94
5	C	355	GDP	C6-N1-C2	6.60	125.09	115.94

There are no chirality outliers.

There are no torsion outliers.

There are no ring outliers.

2 monomers are involved in 9 short contacts:

Mol	Chain	Res	Type	Clashes	Symm-Clashes
5	A	356	GDP	6	0
5	C	355	GDP	3	0

5.7 Other polymers [i](#)

There are no such residues in this entry.

5.8 Polymer linkage issues [i](#)

There are no chain breaks in this entry.

6 Fit of model and data ⓘ

6.1 Protein, DNA and RNA chains ⓘ

EDS was not executed - this section will therefore be empty.

6.2 Non-standard residues in protein, DNA, RNA chains ⓘ

EDS was not executed - this section will therefore be empty.

6.3 Carbohydrates ⓘ

EDS was not executed - this section will therefore be empty.

6.4 Ligands ⓘ

EDS was not executed - this section will therefore be empty.

6.5 Other polymers ⓘ

EDS was not executed - this section will therefore be empty.