



# Full wwPDB X-ray Structure Validation Report ⓘ

Feb 1, 2016 – 10:01 AM GMT

PDB ID : 3KLO  
Title : Vibrio cholerae VpsT bound to c-di-GMP  
Authors : Krasteva, P.V.; Navarro, V.A.S.; Sondermann, H.  
Deposited on : 2009-11-08  
Resolution : 2.80 Å(reported)

This is a Full wwPDB X-ray Structure Validation Report for a publicly released PDB entry.  
We welcome your comments at [validation@mail.wwpdb.org](mailto:validation@mail.wwpdb.org)  
A user guide is available at  
<http://wwpdb.org/validation/2016/XrayValidationReportHelp>  
with specific help available everywhere you see the ⓘ symbol.

---

The following versions of software and data (see [references ⓘ](#)) were used in the production of this report:

MolProbity : 4.02b-467  
Mogul : 1.7 (RC4), CSD as536be (2015)  
Xtriage (Phenix) : 1.9-1692  
EDS : rb-20026688  
Percentile statistics : 20151230.v01 (using entries in the PDB archive December 30th 2015)  
Refmac : 5.8.0135  
CCP4 : 6.5.0  
Ideal geometry (proteins) : Engh & Huber (2001)  
Ideal geometry (DNA, RNA) : Parkinson et al. (1996)  
Validation Pipeline (wwPDB-VP) : trunk26865

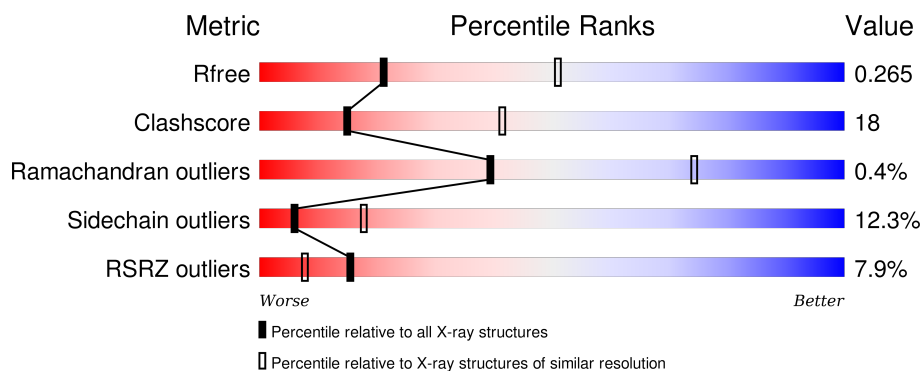
# 1 Overall quality at a glance

The following experimental techniques were used to determine the structure:

## *X-RAY DIFFRACTION*

The reported resolution of this entry is 2.80 Å.

Percentile scores (ranging between 0-100) for global validation metrics of the entry are shown in the following graphic. The table shows the number of entries on which the scores are based.



Metric	Whole archive (#Entries)	Similar resolution (#Entries, resolution range(Å))
$R_{free}$	91344	2393 (2.80-2.80)
Clashscore	102246	2827 (2.80-2.80)
Ramachandran outliers	100387	2782 (2.80-2.80)
Sidechain outliers	100360	2784 (2.80-2.80)
RSRZ outliers	91569	2404 (2.80-2.80)

The table below summarises the geometric issues observed across the polymeric chains and their fit to the electron density. The red, orange, yellow and green segments on the lower bar indicate the fraction of residues that contain outliers for  $\geq 3$ , 2, 1 and 0 types of geometric quality criteria. A grey segment represents the fraction of residues that are not modelled. The numeric value for each fraction is indicated below the corresponding segment, with a dot representing fractions  $\leq 5\%$ . The upper red bar (where present) indicates the fraction of residues that have poor fit to the electron density. The numeric value is given above the bar.

Mol	Chain	Length	Quality of chain
1	A	225	<div> <div>62%</div> <div>28%</div> <div>7%</div> <div>.</div> </div>
1	B	225	<div>4%</div> <div>62%</div> <div>30%</div> <div>.</div> <div>.</div>
1	C	225	<div>10%</div> <div>68%</div> <div>20%</div> <div>7%</div> <div>5%</div>
1	D	225	<div>14%</div> <div>51%</div> <div>21%</div> <div>5%</div> <div>23%</div>

The following table lists non-polymeric compounds, carbohydrate monomers and non-standard residues in protein, DNA, RNA chains that are outliers for geometric or electron-density-fit crite-

ria:

Mol	Type	Chain	Res	Chirality	Geometry	Clashes	Electron density
3	TAR	B	226	-	-	X	-
3	TAR	D	226	X	-	-	-

## 2 Entry composition

There are 4 unique types of molecules in this entry. The entry contains 6902 atoms, of which 0 are hydrogens and 0 are deuteriums.

In the tables below, the ZeroOcc column contains the number of atoms modelled with zero occupancy, the AltConf column contains the number of residues with at least one atom in alternate conformation and the Trace column contains the number of residues modelled with at most 2 atoms.

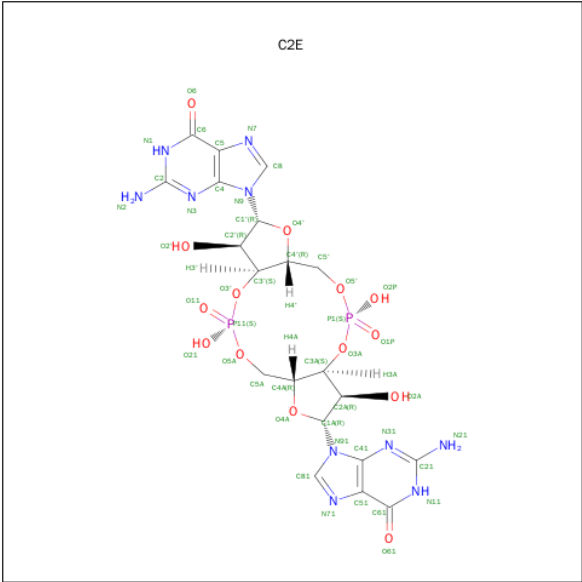
- Molecule 1 is a protein called Transcriptional regulator VpsT.

Mol	Chain	Residues	Atoms					ZeroOcc	AltConf	Trace
1	A	217	Total	C	N	O	S	0	0	0
			1756	1119	298	329	10			
1	B	216	Total	C	N	O	S	0	0	0
			1748	1115	297	326	10			
1	C	213	Total	C	N	O	S	0	0	0
			1728	1101	294	323	10			
1	D	173	Total	C	N	O	S	0	0	0
			1417	905	241	262	9			

There are 4 discrepancies between the modelled and reference sequences:

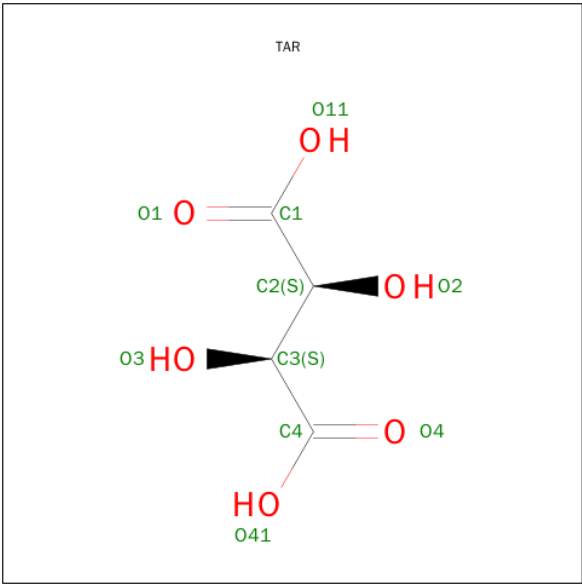
Chain	Residue	Modelled	Actual	Comment	Reference
A	0	SER	-	EXPRESSION TAG	UNP Q9KKZ8
B	0	SER	-	EXPRESSION TAG	UNP Q9KKZ8
C	0	SER	-	EXPRESSION TAG	UNP Q9KKZ8
D	0	SER	-	EXPRESSION TAG	UNP Q9KKZ8

- Molecule 2 is 9,9'-[(2R,3R,3AS,5S,7AR,9R,10R,10AS,12S,14AR)-3,5,10,12-TETRAHYDROXY-5,12-DIOXIDOOCTAHYDRO-2H,7H-DIFURO[3,2-D:3',2'-J][1,3,7,9,2,8]TETRAOXA DIPHOSPHACYCLODODECINE-2,9-DIYL]BIS(2-AMINO-1,9-DIHYDRO-6H-PURIN-6-ONE) (three-letter code: C2E) (formula: C<sub>20</sub>H<sub>24</sub>N<sub>10</sub>O<sub>14</sub>P<sub>2</sub>).



Mol	Chain	Residues	Atoms					ZeroOcc	AltConf
2	A	1	Total 46	C 20	N 10	O 14	P 2	0	0
2	B	1	Total 46	C 20	N 10	O 14	P 2	0	0
2	C	1	Total 46	C 20	N 10	O 14	P 2	0	0
2	D	1	Total 46	C 20	N 10	O 14	P 2	0	0

- Molecule 3 is D(-)-TARTARIC ACID (three-letter code: TAR) (formula: C<sub>4</sub>H<sub>6</sub>O<sub>6</sub>).



Mol	Chain	Residues	Atoms			ZeroOcc	AltConf
3	B	1	Total	C	O	0	0
			10	4	6		
3	D	1	Total	C	O	0	0
			10	4	6		

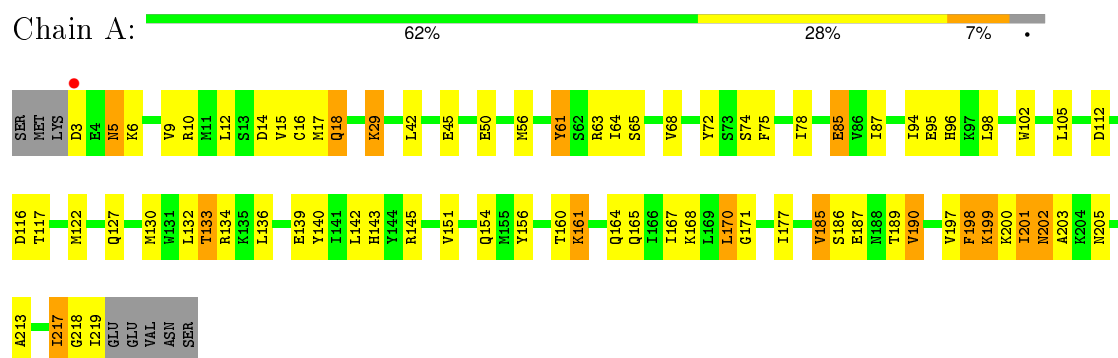
- Molecule 4 is water.

Mol	Chain	Residues	Atoms		ZeroOcc	AltConf
4	A	12	Total	O	0	0
			12	12		
4	B	19	Total	O	0	0
			19	19		
4	C	7	Total	O	0	0
			7	7		
4	D	11	Total	O	0	0
			11	11		

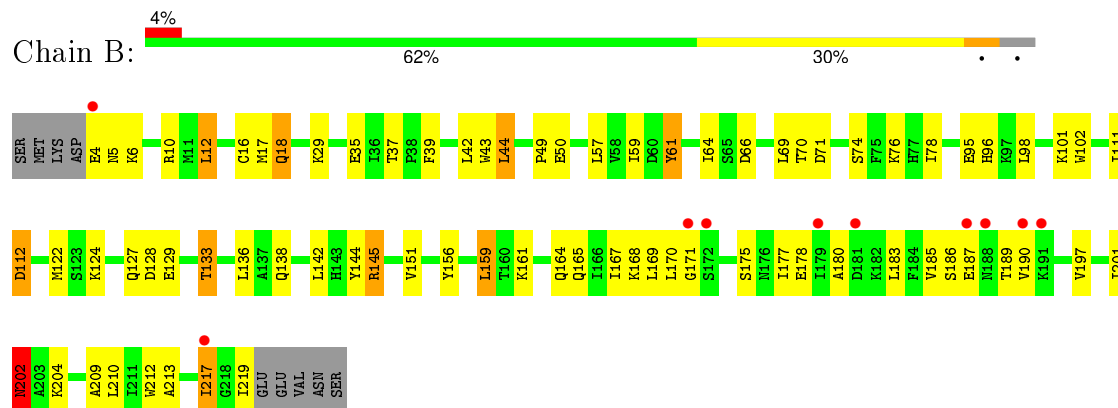
### 3 Residue-property plots

These plots are drawn for all protein, RNA and DNA chains in the entry. The first graphic for a chain summarises the proportions of errors displayed in the second graphic. The second graphic shows the sequence view annotated by issues in geometry and electron density. Residues are color-coded according to the number of geometric quality criteria for which they contain at least one outlier: green = 0, yellow = 1, orange = 2 and red = 3 or more. A red dot above a residue indicates a poor fit to the electron density ( $RSRZ > 2$ ). Stretches of 2 or more consecutive residues without any outlier are shown as a green connector. Residues present in the sample, but not in the model, are shown in grey.

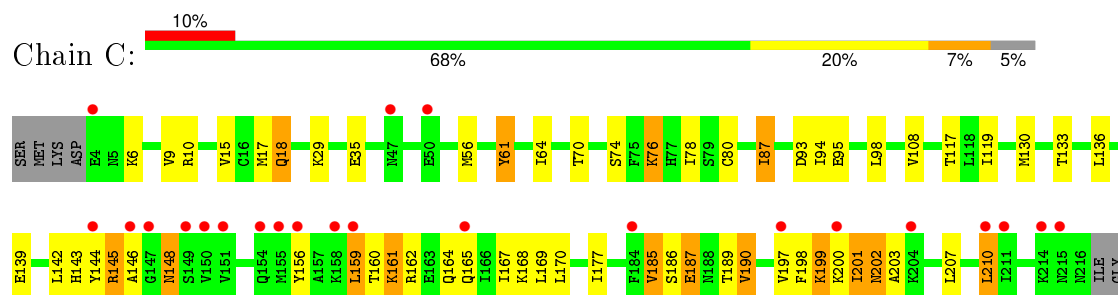
#### • Molecule 1: Transcriptional regulator VpsT



#### • Molecule 1: Transcriptional regulator VpsT

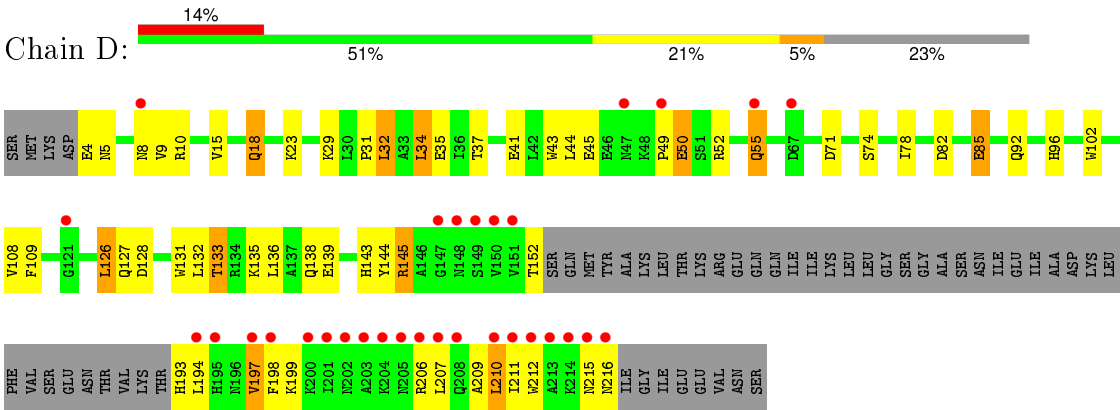


#### • Molecule 1: Transcriptional regulator VpsT



ILE
GLU
GLU
VAL
ASN
SER

● Molecule 1: Transcriptional regulator VpsT



## 4 Data and refinement statistics

Property	Value	Source
Space group	P 41 21 2	Depositor
Cell constants a, b, c, $\alpha$ , $\beta$ , $\gamma$	121.70 Å   121.70 Å   208.23 Å 90.00°   90.00°   90.00°	Depositor
Resolution (Å)	47.86 – 2.80 47.86 – 2.80	Depositor EDS
% Data completeness (in resolution range)	82.8 (47.86-2.80) 98.0 (47.86-2.80)	Depositor EDS
$R_{merge}$	(Not available)	Depositor
$R_{sym}$	(Not available)	Depositor
$\langle I/\sigma(I) \rangle$ <sup>1</sup>	3.97 (at 2.81 Å)	Xtriage
Refinement program	PHENIX (phenix.refine: 2009_02_15_2320_3)	Depositor
R, $R_{free}$	0.246 , 0.290 0.266 , 0.265	Depositor DCC
$R_{free}$ test set	1922 reflections (5.27%)	DCC
Wilson B-factor (Å <sup>2</sup> )	50.1	Xtriage
Anisotropy	0.186	Xtriage
Bulk solvent $k_{sol}$ (e/Å <sup>3</sup> ), $B_{sol}$ (Å <sup>2</sup> )	0.34 , 46.9	EDS
Estimated twinning fraction	No twinning to report.	Xtriage
L-test for twinning <sup>2</sup>	$\langle  L  \rangle = 0.48$ , $\langle L^2 \rangle = 0.31$	Xtriage
Outliers	16 of 38433 reflections (0.042%)	Xtriage
$F_o, F_c$ correlation	0.95	EDS
Total number of atoms	6902	wwPDB-VP
Average B, all atoms (Å <sup>2</sup> )	54.0	wwPDB-VP

Xtriage's analysis on translational NCS is as follows: *The analyses of the Patterson function reveals a significant off-origin peak that is 74.77 % of the origin peak, indicating pseudo translational symmetry. The chance of finding a peak of this or larger height randomly in a structure without pseudo translational symmetry is equal to 1.4350e-06. The detected translational NCS is most likely also responsible for the elevated intensity ratio.*

<sup>1</sup> Intensities estimated from amplitudes.

<sup>2</sup> Theoretical values of  $\langle |L| \rangle$ ,  $\langle L^2 \rangle$  for acentric reflections are 0.5, 0.375 respectively for untwinned datasets, and 0.333, 0.2 for perfectly twinned datasets.

## 5 Model quality [i](#)

### 5.1 Standard geometry [i](#)

Bond lengths and bond angles in the following residue types are not validated in this section: TAR, C2E

The Z score for a bond length (or angle) is the number of standard deviations the observed value is removed from the expected value. A bond length (or angle) with  $|Z| > 5$  is considered an outlier worth inspection. RMSZ is the root-mean-square of all Z scores of the bond lengths (or angles).

Mol	Chain	Bond lengths		Bond angles	
		RMSZ	$\# Z  > 5$	RMSZ	$\# Z  > 5$
1	A	0.41	0/1785	0.54	0/2407
1	B	0.38	0/1777	0.54	0/2396
1	C	0.31	0/1757	0.48	0/2369
1	D	0.34	0/1443	0.52	0/1947
All	All	0.36	0/6762	0.52	0/9119

There are no bond length outliers.

There are no bond angle outliers.

There are no chirality outliers.

There are no planarity outliers.

### 5.2 Too-close contacts [i](#)

In the following table, the Non-H and H(model) columns list the number of non-hydrogen atoms and hydrogen atoms in the chain respectively. The H(added) column lists the number of hydrogen atoms added and optimized by MolProbity. The Clashes column lists the number of clashes within the asymmetric unit, whereas Symm-Clashes lists symmetry related clashes.

Mol	Chain	Non-H	H(model)	H(added)	Clashes	Symm-Clashes
1	A	1756	0	1796	72	0
1	B	1748	0	1792	72	0
1	C	1728	0	1767	56	0
1	D	1417	0	1435	49	0
2	A	46	0	22	0	0
2	B	46	0	22	2	0
2	C	46	0	22	1	0
2	D	46	0	22	1	0
3	B	10	0	6	4	0

*Continued on next page...*

*Continued from previous page...*

Mol	Chain	Non-H	H(model)	H(added)	Clashes	Symm-Clashes
3	D	10	0	6	0	0
4	A	12	0	0	0	0
4	B	19	0	0	2	0
4	C	7	0	0	1	0
4	D	11	0	0	0	0
All	All	6902	0	6890	242	0

The all-atom clashscore is defined as the number of clashes found per 1000 atoms (including hydrogen atoms). The all-atom clashscore for this structure is 18.

All (242) close contacts within the same asymmetric unit are listed below, sorted by their clash magnitude.

Atom-1	Atom-2	Interatomic distance (Å)	Clash overlap (Å)
1:D:145:ARG:HH11	1:D:145:ARG:HG2	1.13	1.09
1:B:145:ARG:HH11	1:B:145:ARG:HG2	1.13	1.04
1:A:18:GLN:HE21	1:A:18:GLN:H	1.05	1.01
1:B:133:THR:HG22	1:B:136:LEU:H	1.27	1.00
1:D:18:GLN:HE21	1:D:18:GLN:H	1.06	0.94
1:B:18:GLN:H	1:B:18:GLN:HE21	0.95	0.93
1:D:210:LEU:HD23	1:D:210:LEU:H	1.41	0.86
1:B:18:GLN:H	1:B:18:GLN:NE2	1.76	0.82
1:A:167:ILE:HD13	1:A:197:VAL:HG11	1.63	0.81
1:C:156:TYR:OH	1:C:168:LYS:HE2	1.81	0.81
1:B:133:THR:CG2	1:B:136:LEU:H	1.94	0.80
1:C:18:GLN:H	1:C:18:GLN:HE21	1.28	0.79
1:A:186:SER:HB3	1:A:189:THR:OG1	1.83	0.79
1:D:145:ARG:HH11	1:D:145:ARG:CG	1.94	0.78
1:D:18:GLN:NE2	1:D:18:GLN:H	1.81	0.77
1:D:4:GLU:HG3	1:D:5:ASN:H	1.48	0.77
1:B:145:ARG:HG2	1:B:145:ARG:NH1	1.94	0.77
1:B:213:ALA:O	1:B:217:ILE:HG22	1.84	0.76
1:C:145:ARG:HG2	1:C:145:ARG:HH11	1.49	0.76
1:D:8:ASN:HB3	1:D:55:GLN:HG3	1.67	0.76
1:B:177:ILE:HG13	1:B:187:GLU:HG3	1.66	0.75
1:A:133:THR:HG22	1:A:136:LEU:H	1.50	0.75
1:C:145:ARG:HH11	1:C:145:ARG:CG	1.99	0.74
1:A:133:THR:CG2	1:A:136:LEU:H	2.01	0.74
1:B:197:VAL:HG12	1:B:201:ILE:HD12	1.70	0.73
1:D:145:ARG:NH1	1:D:145:ARG:HG2	1.94	0.73
1:A:130:MET:HG3	1:B:138:GLN:HG3	1.69	0.72
1:B:4:GLU:HG2	1:B:5:ASN:H	1.54	0.72

*Continued on next page...*

*Continued from previous page...*

Atom-1	Atom-2	Interatomic distance (Å)	Clash overlap (Å)
1:A:96:HIS:CD2	1:A:139:GLU:HG3	2.25	0.72
1:C:133:THR:HG22	1:C:136:LEU:HB3	1.71	0.71
1:D:207:LEU:HA	1:D:210:LEU:HD21	1.71	0.70
2:C:225:C2E:H512	2:C:225:C2E:H5'2	1.74	0.69
1:B:4:GLU:HG2	1:B:5:ASN:N	2.08	0.69
1:C:61:TYR:O	1:C:64:ILE:HG22	1.93	0.69
1:C:9:VAL:HG22	1:C:56:MET:HB3	1.74	0.68
1:D:133:THR:HG22	1:D:136:LEU:H	1.58	0.68
1:C:177:ILE:HG13	1:C:187:GLU:HG3	1.74	0.68
1:A:127:GLN:HE22	1:C:6:LYS:HE3	1.59	0.67
1:B:43:TRP:CE2	1:B:44:LEU:HD22	2.30	0.67
1:D:31:PRO:HD2	1:D:126:LEU:HD23	1.76	0.66
1:B:133:THR:HG22	1:B:136:LEU:N	2.08	0.66
1:B:201:ILE:O	1:B:202:ASN:HB2	1.94	0.66
1:A:177:ILE:HG13	1:A:187:GLU:HG3	1.78	0.66
1:A:127:GLN:NE2	1:C:6:LYS:HE3	2.11	0.65
1:B:124:LYS:HD3	1:B:129:GLU:OE2	1.96	0.65
1:A:95:GLU:HB3	1:A:98:LEU:HG	1.78	0.65
1:C:159:LEU:HD12	1:C:164:GLN:HG2	1.78	0.65
1:A:18:GLN:NE2	1:A:18:GLN:H	1.86	0.65
1:A:5:ASN:C	1:A:5:ASN:HD22	1.99	0.65
1:B:161:LYS:O	1:B:165:GLN:HG3	1.96	0.64
1:B:112:ASP:OD1	1:B:112:ASP:N	2.30	0.64
1:C:207:LEU:HA	1:C:210:LEU:HD23	1.78	0.64
1:D:194:LEU:O	1:D:197:VAL:HG23	1.99	0.63
1:A:156:TYR:OH	1:A:168:LYS:HE3	1.98	0.63
1:B:145:ARG:HH11	1:B:145:ARG:CG	2.00	0.63
1:C:185:VAL:HG13	1:C:189:THR:HB	1.79	0.62
1:C:133:THR:HG22	1:C:136:LEU:CB	2.29	0.62
1:C:167:ILE:HD13	1:C:197:VAL:HG11	1.80	0.62
1:D:18:GLN:N	1:D:18:GLN:HE21	1.89	0.62
1:A:9:VAL:HG22	1:A:56:MET:HB3	1.80	0.61
1:C:145:ARG:NH1	1:C:145:ARG:HG2	2.14	0.61
1:C:74:SER:O	1:C:78:ILE:HG12	2.00	0.61
1:C:159:LEU:CD1	1:C:164:GLN:HG2	2.30	0.61
1:D:210:LEU:CD2	1:D:210:LEU:H	2.13	0.60
1:B:197:VAL:CG1	1:B:201:ILE:HD12	2.32	0.60
1:A:145:ARG:HA	1:B:144:TYR:CD1	2.35	0.60
1:C:133:THR:CG2	1:C:136:LEU:H	2.14	0.60
1:A:134:ARG:HG3	3:B:226:TAR:O1	2.01	0.60
1:C:161:LYS:HD2	1:C:161:LYS:N	2.17	0.59

*Continued on next page...*

*Continued from previous page...*

Atom-1	Atom-2	Interatomic distance (Å)	Clash overlap (Å)
1:C:186:SER:HB3	1:C:189:THR:OG1	2.02	0.59
1:B:204:LYS:HE3	4:B:245:HOH:O	2.02	0.59
1:D:85:GLU:OE1	1:D:102:TRP:HE3	1.86	0.59
1:C:95:GLU:HB3	1:C:98:LEU:HG	1.82	0.59
1:C:143:HIS:CE1	1:C:148:ASN:HB2	2.37	0.59
1:C:201:ILE:HG22	1:C:203:ALA:H	1.68	0.59
1:A:74:SER:O	1:A:78:ILE:HG12	2.03	0.59
1:C:76:LYS:HE3	1:C:80:CYS:O	2.02	0.58
1:B:124:LYS:HE3	3:B:226:TAR:H2	1.86	0.58
1:B:49:PRO:HD2	1:B:50:GLU:OE1	2.04	0.58
1:A:161:LYS:O	1:A:165:GLN:HG3	2.04	0.58
1:A:18:GLN:HE21	1:A:18:GLN:N	1.89	0.58
1:C:143:HIS:O	1:C:146:ALA:HB3	2.04	0.57
1:B:18:GLN:HE21	1:B:18:GLN:N	1.81	0.57
1:A:29:LYS:HG3	1:C:119:ILE:HG22	1.86	0.57
1:B:61:TYR:O	1:B:64:ILE:HG22	2.04	0.57
1:D:133:THR:HG22	1:D:135:LYS:N	2.21	0.56
1:A:197:VAL:C	1:A:199:LYS:H	2.09	0.55
1:C:145:ARG:HH11	1:C:145:ARG:HB3	1.71	0.55
1:B:66:ASP:HA	1:B:69:LEU:HD12	1.88	0.55
1:C:201:ILE:HG22	1:C:203:ALA:N	2.22	0.55
1:D:4:GLU:HG3	1:D:5:ASN:N	2.20	0.55
1:B:186:SER:HB3	1:B:189:THR:OG1	2.06	0.55
1:C:160:THR:O	1:C:164:GLN:HG3	2.07	0.55
1:B:59:ILE:HD13	1:B:102:TRP:CZ3	2.43	0.54
1:A:167:ILE:CG2	1:A:168:LYS:N	2.70	0.54
1:C:145:ARG:CB	1:C:145:ARG:HH11	2.20	0.54
1:B:219:ILE:HG23	1:B:219:ILE:O	2.08	0.54
1:A:133:THR:HG22	1:A:136:LEU:CB	2.38	0.54
1:C:70:THR:HG23	4:C:227:HOH:O	2.08	0.53
1:A:87:ILE:HD13	1:A:105:LEU:CD1	2.38	0.53
1:A:130:MET:CG	1:B:138:GLN:HG3	2.38	0.53
1:B:96:HIS:HB2	4:B:243:HOH:O	2.08	0.53
1:C:198:PHE:O	1:C:199:LYS:HG3	2.08	0.52
1:D:43:TRP:CE2	1:D:44:LEU:HG	2.44	0.52
1:B:175:SER:HB3	1:B:178:GLU:HG3	1.91	0.52
2:B:225:C2E:N11	3:B:226:TAR:O11	2.28	0.52
1:A:198:PHE:O	1:A:199:LYS:HG3	2.10	0.52
1:D:37:THR:HG21	1:D:45:GLU:HG3	1.92	0.52
1:C:200:LYS:O	1:C:201:ILE:C	2.49	0.52
1:B:165:GLN:O	1:B:169:LEU:HG	2.09	0.52

*Continued on next page...*

*Continued from previous page...*

Atom-1	Atom-2	Interatomic distance (Å)	Clash overlap (Å)
1:A:156:TYR:CD2	1:A:156:TYR:C	2.84	0.51
1:D:212:TRP:O	1:D:216:ASN:HB2	2.10	0.51
1:A:200:LYS:O	1:A:201:ILE:C	2.46	0.51
1:C:130:MET:HG3	1:D:138:GLN:HG3	1.91	0.51
1:C:185:VAL:CG1	1:C:189:THR:HB	2.41	0.51
1:C:143:HIS:HD2	1:C:144:TYR:CD1	2.28	0.51
1:B:164:GLN:O	1:B:167:ILE:HG22	2.11	0.51
1:A:5:ASN:C	1:A:5:ASN:ND2	2.64	0.51
1:B:185:VAL:HG12	1:B:189:THR:HB	1.93	0.51
1:C:18:GLN:NE2	1:C:18:GLN:H	2.05	0.50
1:B:209:ALA:O	1:B:212:TRP:HB3	2.11	0.50
1:D:132:LEU:HD22	1:D:136:LEU:HD23	1.93	0.50
1:B:127:GLN:O	1:B:128:ASP:HB2	2.11	0.50
1:D:194:LEU:O	1:D:198:PHE:CD1	2.65	0.50
1:D:207:LEU:O	1:D:211:ILE:HG13	2.13	0.49
1:A:185:VAL:CG1	1:A:189:THR:HB	2.42	0.49
1:C:133:THR:HG23	1:C:136:LEU:H	1.77	0.49
1:D:74:SER:O	1:D:78:ILE:HG12	2.13	0.49
1:A:156:TYR:CE1	1:A:217:ILE:HD13	2.47	0.49
1:C:18:GLN:N	1:C:18:GLN:HE21	2.04	0.49
1:A:61:TYR:O	1:A:64:ILE:HG22	2.13	0.48
1:B:185:VAL:HG12	1:B:186:SER:N	2.27	0.48
1:A:171:GLY:HA3	1:A:213:ALA:HB1	1.95	0.48
1:A:185:VAL:HG13	1:A:189:THR:HB	1.95	0.48
1:C:144:TYR:HE2	1:D:145:ARG:HD3	1.79	0.48
1:D:210:LEU:HD23	1:D:210:LEU:N	2.21	0.48
1:B:167:ILE:CG2	1:B:168:LYS:N	2.76	0.48
1:D:96:HIS:CD2	1:D:139:GLU:HG3	2.48	0.48
1:D:207:LEU:HA	1:D:210:LEU:CD2	2.43	0.48
1:A:112:ASP:OD1	1:A:112:ASP:N	2.45	0.48
1:A:16:CYS:O	1:A:17:MET:C	2.53	0.47
1:D:215:ASN:O	1:D:216:ASN:CB	2.63	0.47
1:B:4:GLU:O	1:B:5:ASN:HB3	2.14	0.47
1:C:148:ASN:ND2	1:C:148:ASN:N	2.62	0.47
1:A:200:LYS:C	1:A:202:ASN:N	2.66	0.47
1:C:185:VAL:HG13	1:C:189:THR:CB	2.45	0.47
1:B:50:GLU:CD	1:B:50:GLU:H	2.18	0.47
1:B:171:GLY:HA3	1:B:213:ALA:HB1	1.96	0.47
1:D:127:GLN:O	1:D:128:ASP:HB2	2.14	0.46
1:D:109:PHE:CE1	1:D:131:TRP:CD1	3.03	0.46
1:D:143:HIS:HD2	1:D:144:TYR:CD2	2.34	0.46

*Continued on next page...*

*Continued from previous page...*

Atom-1	Atom-2	Interatomic distance (Å)	Clash overlap (Å)
1:A:203:ALA:HB1	1:A:205:ASN:O	2.16	0.46
1:D:215:ASN:O	1:D:216:ASN:CG	2.53	0.46
1:A:3:ASP:HB3	1:A:6:LYS:HD2	1.98	0.46
1:B:95:GLU:HB3	1:B:98:LEU:HG	1.97	0.46
1:A:72:TYR:CE2	1:A:102:TRP:HZ3	2.33	0.46
1:A:187:GLU:O	1:A:190:VAL:HG13	2.16	0.46
1:C:130:MET:SD	1:D:138:GLN:HG3	2.56	0.46
1:C:201:ILE:O	1:C:202:ASN:CB	2.64	0.45
1:D:41:GLU:O	1:D:41:GLU:HG2	2.15	0.45
1:D:206:ARG:O	1:D:209:ALA:HB3	2.17	0.45
1:B:180:ALA:HB1	1:B:185:VAL:O	2.16	0.45
1:A:197:VAL:C	1:A:199:LYS:N	2.69	0.45
1:D:50:GLU:CD	1:D:50:GLU:H	2.18	0.45
1:D:23:LYS:HE3	1:D:34:LEU:O	2.16	0.45
1:A:197:VAL:O	1:A:201:ILE:HG23	2.17	0.45
1:B:156:TYR:CD1	1:B:217:ILE:HG12	2.52	0.45
1:B:156:TYR:CZ	1:B:217:ILE:HD11	2.52	0.45
1:B:4:GLU:C	1:B:6:LYS:H	2.21	0.44
1:A:14:ASP:OD2	1:A:63:ARG:HD2	2.17	0.44
1:B:10:ARG:HB3	1:B:57:LEU:HD23	1.99	0.44
1:C:187:GLU:O	1:C:190:VAL:HG13	2.17	0.44
1:A:42:LEU:HA	1:A:42:LEU:HD12	1.72	0.44
1:B:177:ILE:HD11	1:B:187:GLU:OE1	2.17	0.44
1:A:3:ASP:OD2	1:A:5:ASN:HB3	2.18	0.44
1:A:122:MET:HE2	1:A:122:MET:HB3	1.73	0.44
1:A:197:VAL:O	1:A:199:LYS:N	2.50	0.44
1:A:105:LEU:HD23	1:A:140:TYR:OH	2.18	0.44
1:A:198:PHE:C	1:A:199:LYS:HG3	2.38	0.44
1:C:156:TYR:CD2	1:C:156:TYR:C	2.90	0.44
1:C:197:VAL:C	1:C:199:LYS:H	2.21	0.44
1:C:200:LYS:HG2	1:C:200:LYS:O	2.18	0.43
1:A:201:ILE:O	1:A:202:ASN:CB	2.66	0.43
1:C:167:ILE:HA	1:C:167:ILE:HD12	1.77	0.43
1:A:130:MET:SD	1:B:138:GLN:HG3	2.58	0.43
1:B:74:SER:O	1:B:78:ILE:HG12	2.17	0.43
1:C:87:ILE:HD11	1:C:108:VAL:HG13	1.99	0.43
1:D:9:VAL:HG21	1:D:32:LEU:HD22	2.00	0.43
1:B:159:LEU:HD12	1:B:164:GLN:HG3	2.00	0.43
1:A:130:MET:CE	1:A:132:LEU:HD11	2.48	0.43
1:A:164:GLN:O	1:A:167:ILE:HG22	2.19	0.43
1:A:167:ILE:HG23	1:A:168:LYS:N	2.33	0.43

*Continued on next page...*

*Continued from previous page...*

Atom-1	Atom-2	Interatomic distance (Å)	Clash overlap (Å)
1:B:167:ILE:HD12	1:B:167:ILE:HA	1.85	0.43
1:B:4:GLU:CG	1:B:5:ASN:H	2.23	0.43
1:B:156:TYR:OH	1:B:168:LYS:HD3	2.18	0.43
1:B:185:VAL:CG1	1:B:189:THR:HB	2.49	0.43
1:B:43:TRP:CZ2	1:B:44:LEU:CD2	3.02	0.43
1:A:167:ILE:O	1:A:168:LYS:C	2.57	0.42
1:B:167:ILE:HG23	1:B:168:LYS:N	2.34	0.42
1:A:87:ILE:HD13	1:A:105:LEU:HD11	1.99	0.42
1:C:167:ILE:CG2	1:C:168:LYS:N	2.82	0.42
1:B:159:LEU:HD12	1:B:164:GLN:CG	2.49	0.42
1:A:201:ILE:HD11	1:A:203:ALA:HB2	2.02	0.42
1:B:145:ARG:CG	1:B:145:ARG:NH1	2.69	0.42
1:D:133:THR:HG22	1:D:135:LYS:H	1.84	0.42
1:A:133:THR:HG22	1:A:136:LEU:N	2.26	0.42
1:A:45:GLU:HB2	1:A:75:PHE:CE1	2.55	0.42
1:D:49:PRO:HA	1:D:52:ARG:NH1	2.35	0.42
1:D:133:THR:CG2	1:D:135:LYS:H	2.33	0.41
1:A:65:SER:O	1:A:68:VAL:HG22	2.20	0.41
1:A:156:TYR:OH	1:A:168:LYS:CE	2.64	0.41
1:C:162:ARG:HD3	1:C:162:ARG:HA	1.90	0.41
1:C:164:GLN:O	1:C:167:ILE:HG22	2.20	0.41
1:A:185:VAL:CG1	1:A:186:SER:N	2.84	0.41
1:B:183:LEU:O	1:B:185:VAL:HG23	2.20	0.41
1:B:12:LEU:HA	1:B:37:THR:O	2.20	0.41
1:C:165:GLN:O	1:C:169:LEU:HG	2.21	0.41
1:A:154:GLN:NE2	1:A:154:GLN:HA	2.36	0.41
1:D:143:HIS:HD2	1:D:144:TYR:CE2	2.39	0.41
1:A:170:LEU:HA	1:A:170:LEU:HD23	1.92	0.41
1:A:167:ILE:HA	1:A:167:ILE:HD12	1.98	0.41
1:A:185:VAL:HG13	1:A:189:THR:CB	2.51	0.41
1:D:4:GLU:CG	1:D:5:ASN:N	2.82	0.41
1:D:108:VAL:HG23	1:D:132:LEU:HD23	2.02	0.41
2:B:225:C2E:HN11	3:B:226:TAR:HO1	1.59	0.41
1:D:131:TRP:CH2	2:D:225:C2E:C41	3.04	0.41
1:A:45:GLU:HB2	1:A:75:PHE:HE1	1.86	0.41
1:A:218:GLY:O	1:A:219:ILE:C	2.60	0.41
1:B:16:CYS:O	1:B:17:MET:C	2.59	0.41
1:B:43:TRP:CZ2	1:B:44:LEU:HD22	2.56	0.41
1:A:72:TYR:OH	1:A:85:GLU:OE1	2.35	0.41
1:D:206:ARG:O	1:D:210:LEU:HD23	2.20	0.40
1:C:145:ARG:NH1	1:C:145:ARG:CG	2.68	0.40

*Continued on next page...*

Continued from previous page...

Atom-1	Atom-2	Interatomic distance (Å)	Clash overlap (Å)
1:B:185:VAL:CG1	1:B:186:SER:N	2.84	0.40
1:B:161:LYS:HD2	1:B:161:LYS:H	1.87	0.40
1:B:122:MET:HB3	1:B:122:MET:HE2	1.82	0.40
1:B:217:ILE:HD12	1:B:217:ILE:O	2.22	0.40
1:B:161:LYS:HD2	1:B:161:LYS:N	2.36	0.40
1:B:177:ILE:N	1:B:177:ILE:HD12	2.36	0.40
1:A:200:LYS:O	1:A:202:ASN:N	2.54	0.40
1:D:126:LEU:HD12	1:D:126:LEU:HA	1.74	0.40
1:B:39:PHE:O	1:B:42:LEU:HB2	2.22	0.40

There are no symmetry-related clashes.

## 5.3 Torsion angles [i](#)

### 5.3.1 Protein backbone [i](#)

In the following table, the Percentiles column shows the percent Ramachandran outliers of the chain as a percentile score with respect to all X-ray entries followed by that with respect to entries of similar resolution.

The Analysed column shows the number of residues for which the backbone conformation was analysed, and the total number of residues.

Mol	Chain	Analysed	Favoured	Allowed	Outliers	Percentiles	
1	A	215/225 (96%)	201 (94%)	12 (6%)	2 (1%)	21	55
1	B	214/225 (95%)	202 (94%)	11 (5%)	1 (0%)	34	69
1	C	211/225 (94%)	197 (93%)	14 (7%)	0	100	100
1	D	169/225 (75%)	156 (92%)	13 (8%)	0	100	100
All	All	809/900 (90%)	756 (93%)	50 (6%)	3 (0%)	39	74

All (3) Ramachandran outliers are listed below:

Mol	Chain	Res	Type
1	A	198	PHE
1	B	202	ASN
1	A	143	HIS

### 5.3.2 Protein sidechains ⓘ

In the following table, the Percentiles column shows the percent sidechain outliers of the chain as a percentile score with respect to all X-ray entries followed by that with respect to entries of similar resolution.

The Analysed column shows the number of residues for which the sidechain conformation was analysed, and the total number of residues.

Mol	Chain	Analysed	Rotameric	Outliers	Percentiles	
1	A	199/207 (96%)	175 (88%)	24 (12%)	6	18
1	B	198/207 (96%)	176 (89%)	22 (11%)	8	23
1	C	196/207 (95%)	170 (87%)	26 (13%)	5	14
1	D	161/207 (78%)	140 (87%)	21 (13%)	5	15
All	All	754/828 (91%)	661 (88%)	93 (12%)	6	18

All (93) residues with a non-rotameric sidechain are listed below:

Mol	Chain	Res	Type
1	A	5	ASN
1	A	10	ARG
1	A	12	LEU
1	A	15	VAL
1	A	18	GLN
1	A	29	LYS
1	A	50	GLU
1	A	61	TYR
1	A	85	GLU
1	A	94	ILE
1	A	116	ASP
1	A	117	THR
1	A	133	THR
1	A	142	LEU
1	A	151	VAL
1	A	160	THR
1	A	161	LYS
1	A	170	LEU
1	A	185	VAL
1	A	190	VAL
1	A	199	LYS
1	A	201	ILE
1	A	202	ASN
1	A	217	ILE

*Continued on next page...*

*Continued from previous page...*

Mol	Chain	Res	Type
1	B	12	LEU
1	B	18	GLN
1	B	29	LYS
1	B	35	GLU
1	B	44	LEU
1	B	61	TYR
1	B	70	THR
1	B	71	ASP
1	B	76	LYS
1	B	101	LYS
1	B	111	ILE
1	B	112	ASP
1	B	133	THR
1	B	142	LEU
1	B	145	ARG
1	B	151	VAL
1	B	159	LEU
1	B	170	LEU
1	B	190	VAL
1	B	202	ASN
1	B	210	LEU
1	B	217	ILE
1	C	10	ARG
1	C	15	VAL
1	C	17	MET
1	C	18	GLN
1	C	29	LYS
1	C	35	GLU
1	C	61	TYR
1	C	76	LYS
1	C	87	ILE
1	C	93	ASP
1	C	94	ILE
1	C	117	THR
1	C	139	GLU
1	C	142	LEU
1	C	145	ARG
1	C	148	ASN
1	C	159	LEU
1	C	161	LYS
1	C	170	LEU
1	C	185	VAL

*Continued on next page...*

*Continued from previous page...*

Mol	Chain	Res	Type
1	C	187	GLU
1	C	190	VAL
1	C	199	LYS
1	C	201	ILE
1	C	202	ASN
1	C	210	LEU
1	D	10	ARG
1	D	15	VAL
1	D	18	GLN
1	D	29	LYS
1	D	32	LEU
1	D	34	LEU
1	D	35	GLU
1	D	50	GLU
1	D	55	GLN
1	D	71	ASP
1	D	82	ASP
1	D	85	GLU
1	D	92	GLN
1	D	126	LEU
1	D	133	THR
1	D	145	ARG
1	D	152	THR
1	D	193	HIS
1	D	197	VAL
1	D	199	LYS
1	D	210	LEU

Some sidechains can be flipped to improve hydrogen bonding and reduce clashes. All (22) such sidechains are listed below:

Mol	Chain	Res	Type
1	A	5	ASN
1	A	18	GLN
1	A	92	GLN
1	A	127	GLN
1	A	154	GLN
1	B	18	GLN
1	B	103	ASN
1	B	143	HIS
1	C	18	GLN
1	C	89	ASN
1	C	96	HIS

*Continued on next page...*

*Continued from previous page...*

Mol	Chain	Res	Type
1	C	103	ASN
1	C	143	HIS
1	C	148	ASN
1	C	154	GLN
1	C	193	HIS
1	C	196	ASN
1	D	18	GLN
1	D	89	ASN
1	D	92	GLN
1	D	143	HIS
1	D	148	ASN

### 5.3.3 RNA [i](#)

There are no RNA molecules in this entry.

## 5.4 Non-standard residues in protein, DNA, RNA chains [i](#)

There are no non-standard protein/DNA/RNA residues in this entry.

## 5.5 Carbohydrates [i](#)

There are no carbohydrates in this entry.

## 5.6 Ligand geometry [i](#)

6 ligands are modelled in this entry.

In the following table, the Counts columns list the number of bonds (or angles) for which Mogul statistics could be retrieved, the number of bonds (or angles) that are observed in the model and the number of bonds (or angles) that are defined in the chemical component dictionary. The Link column lists molecule types, if any, to which the group is linked. The Z score for a bond length (or angle) is the number of standard deviations the observed value is removed from the expected value. A bond length (or angle) with  $|Z| > 2$  is considered an outlier worth inspection. RMSZ is the root-mean-square of all Z scores of the bond lengths (or angles).

Mol	Type	Chain	Res	Link	Bond lengths			Bond angles		
					Counts	RMSZ	# Z  > 2	Counts	RMSZ	# Z  > 2
2	C2E	A	225	-	42,52,52	0.91	1 (2%)	50,82,82	1.65	11 (22%)
2	C2E	B	225	-	42,52,52	0.96	2 (4%)	50,82,82	1.71	12 (24%)

Mol	Type	Chain	Res	Link	Bond lengths			Bond angles		
					Counts	RMSZ	# Z  > 2	Counts	RMSZ	# Z  > 2
3	TAR	B	226	-	3,9,9	0.91	0	6,12,12	1.05	0
2	C2E	C	225	-	42,52,52	1.00	2 (4%)	50,82,82	1.67	11 (22%)
2	C2E	D	225	-	42,52,52	1.06	4 (9%)	50,82,82	1.53	9 (18%)
3	TAR	D	226	-	3,9,9	0.80	0	6,12,12	1.20	0

In the following table, the Chirals column lists the number of chiral outliers, the number of chiral centers analysed, the number of these observed in the model and the number defined in the chemical component dictionary. Similar counts are reported in the Torsion and Rings columns. '-' means no outliers of that kind were identified.

Mol	Type	Chain	Res	Link	Chirals	Torsions	Rings
2	C2E	A	225	-	-	0/22/62/62	0/6/7/7
2	C2E	B	225	-	-	0/22/62/62	0/6/7/7
3	TAR	B	226	-	-	0/4/12/12	0/0/0/0
2	C2E	C	225	-	-	0/22/62/62	0/6/7/7
2	C2E	D	225	-	-	0/22/62/62	0/6/7/7
3	TAR	D	226	-	2/2/4/4	0/4/12/12	0/0/0/0

All (9) bond length outliers are listed below:

Mol	Chain	Res	Type	Atoms	Z	Observed(Å)	Ideal(Å)
2	D	225	C2E	C81-N71	-2.29	1.30	1.34
2	B	225	C2E	C81-N71	-2.15	1.30	1.34
2	D	225	C2E	C8-N7	-2.13	1.30	1.34
2	B	225	C2E	C8-N7	-2.02	1.30	1.34
2	A	225	C2E	C2-N2	2.00	1.38	1.34
2	D	225	C2E	O4'-C1'	2.23	1.44	1.41
2	D	225	C2E	O4A-C1A	2.34	1.44	1.41
2	C	225	C2E	O4'-C1'	2.36	1.44	1.41
2	C	225	C2E	O4A-C1A	2.51	1.44	1.41

All (43) bond angle outliers are listed below:

Mol	Chain	Res	Type	Atoms	Z	Observed(°)	Ideal(°)
2	B	225	C2E	C2'-C1'-N9	-4.30	107.72	114.29
2	C	225	C2E	C5-C6-N1	-4.15	117.92	123.59
2	A	225	C2E	C2'-C1'-N9	-4.09	108.04	114.29
2	C	225	C2E	N3-C2-N1	-3.85	121.59	127.44
2	D	225	C2E	C41-C51-N71	-3.84	105.95	109.48
2	A	225	C2E	N3-C2-N1	-3.83	121.61	127.44
2	D	225	C2E	C51-C61-N11	-3.64	118.62	123.59

*Continued on next page...*

*Continued from previous page...*

Mol	Chain	Res	Type	Atoms	Z	Observed(°)	Ideal(°)
2	C	225	C2E	C51-C61-N11	-3.63	118.62	123.59
2	B	225	C2E	N3-C2-N1	-3.57	122.00	127.44
2	D	225	C2E	C5-C6-N1	-3.52	118.77	123.59
2	D	225	C2E	C2'-C1'-N9	-3.52	108.91	114.29
2	D	225	C2E	N3-C2-N1	-3.52	122.08	127.44
2	B	225	C2E	N31-C21-N11	-3.50	122.11	127.44
2	B	225	C2E	C51-C61-N11	-3.48	118.83	123.59
2	B	225	C2E	C2A-C1A-N91	-3.46	109.00	114.29
2	A	225	C2E	C51-C61-N11	-3.42	118.91	123.59
2	C	225	C2E	N31-C21-N11	-3.41	122.25	127.44
2	A	225	C2E	C5-C6-N1	-3.37	118.98	123.59
2	C	225	C2E	C4-C5-N7	-3.10	106.62	109.48
2	B	225	C2E	C5-C6-N1	-3.05	119.41	123.59
2	A	225	C2E	N31-C21-N11	-2.97	122.92	127.44
2	B	225	C2E	C61-C51-C41	-2.78	117.58	120.90
2	D	225	C2E	N31-C21-N11	-2.69	123.34	127.44
2	A	225	C2E	C4-C5-N7	-2.65	107.04	109.48
2	C	225	C2E	C2'-C1'-N9	-2.58	110.34	114.29
2	C	225	C2E	C41-C51-N71	-2.43	107.24	109.48
2	B	225	C2E	C4-C5-N7	-2.41	107.26	109.48
2	A	225	C2E	C6-C5-C4	-2.41	118.02	120.90
2	A	225	C2E	C2A-C1A-N91	-2.38	110.66	114.29
2	B	225	C2E	C41-C51-N71	-2.37	107.30	109.48
2	A	225	C2E	C2A-C3A-C4A	-2.34	98.89	103.29
2	C	225	C2E	C6-C5-C4	-2.27	118.18	120.90
2	D	225	C2E	C6-C5-C4	-2.14	118.34	120.90
2	B	225	C2E	C6-C5-C4	-2.13	118.35	120.90
2	C	225	C2E	C2A-C1A-N91	-2.05	111.16	114.29
2	D	225	C2E	C61-N11-C21	2.22	119.02	115.94
2	B	225	C2E	C6-N1-C2	2.45	119.34	115.94
2	A	225	C2E	C61-N11-C21	2.58	119.53	115.94
2	C	225	C2E	C61-N11-C21	2.90	119.96	115.94
2	D	225	C2E	C6-N1-C2	2.95	120.03	115.94
2	A	225	C2E	C6-N1-C2	3.01	120.11	115.94
2	B	225	C2E	C61-N11-C21	3.38	120.64	115.94
2	C	225	C2E	C6-N1-C2	3.76	121.16	115.94

All (2) chirality outliers are listed below:

Mol	Chain	Res	Type	Atom
3	D	226	TAR	C2
3	D	226	TAR	C3

There are no torsion outliers.

There are no ring outliers.

4 monomers are involved in 6 short contacts:

Mol	Chain	Res	Type	Clashes	Symm-Clashes
2	B	225	C2E	2	0
3	B	226	TAR	4	0
2	C	225	C2E	1	0
2	D	225	C2E	1	0

## 5.7 Other polymers [i](#)

There are no such residues in this entry.

## 5.8 Polymer linkage issues [i](#)

There are no chain breaks in this entry.

## 6 Fit of model and data

### 6.1 Protein, DNA and RNA chains

In the following table, the column labelled ‘#RSRZ> 2’ contains the number (and percentage) of RSRZ outliers, followed by percent RSRZ outliers for the chain as percentile scores relative to all X-ray entries and entries of similar resolution. The OWAB column contains the minimum, median, 95<sup>th</sup> percentile and maximum values of the occupancy-weighted average B-factor per residue. The column labelled ‘Q< 0.9’ lists the number of (and percentage) of residues with an average occupancy less than 0.9.

Mol	Chain	Analysed	<RSRZ>	#RSRZ>2	OWAB(Å <sup>2</sup> )	Q<0.9
1	A	217/225 (96%)	0.01	1 (0%) 91 88	18, 41, 72, 96	0
1	B	216/225 (96%)	0.22	10 (4%) 36 25	20, 41, 82, 97	0
1	C	213/225 (94%)	0.60	23 (10%) 8 3	31, 62, 98, 117	0
1	D	173/225 (76%)	0.94	31 (17%) 2 1	41, 61, 107, 125	0
All	All	819/900 (91%)	0.42	65 (7%) 15 8	18, 52, 95, 125	0

All (65) RSRZ outliers are listed below:

Mol	Chain	Res	Type	RSRZ
1	C	149	SER	8.7
1	D	210	LEU	8.1
1	D	215	ASN	6.8
1	D	201	ILE	6.8
1	D	211	ILE	6.4
1	D	197	VAL	6.1
1	D	202	ASN	6.0
1	D	195	HIS	6.0
1	D	151	VAL	5.6
1	C	155	MET	5.5
1	D	147	GLY	5.3
1	D	198	PHE	5.1
1	A	3	ASP	4.8
1	D	207	LEU	4.6
1	D	203	ALA	4.5
1	B	188	ASN	4.4
1	C	215	ASN	4.4
1	C	214	LYS	4.3
1	B	172	SER	3.8
1	D	49	PRO	3.7
1	D	148	ASN	3.7

*Continued on next page...*

*Continued from previous page...*

Mol	Chain	Res	Type	RSRZ
1	D	214	LYS	3.7
1	D	121	GLY	3.6
1	C	204	LYS	3.5
1	D	150	VAL	3.5
1	C	159	LEU	3.5
1	D	194	LEU	3.5
1	C	200	LYS	3.4
1	D	205	ASN	3.3
1	D	212	TRP	3.3
1	D	8	ASN	3.3
1	B	171	GLY	3.3
1	C	211	ILE	3.2
1	B	217	ILE	3.2
1	D	200	LYS	3.2
1	C	158	LYS	3.2
1	C	154	GLN	3.1
1	C	150	VAL	3.1
1	C	47	ASN	3.1
1	D	149	SER	3.0
1	D	208	GLN	2.8
1	C	210	LEU	2.8
1	C	147	GLY	2.7
1	D	204	LYS	2.7
1	D	55	GLN	2.7
1	C	144	TYR	2.6
1	B	4	GLU	2.6
1	D	206	ARG	2.6
1	B	179	ILE	2.6
1	B	181	ASP	2.5
1	D	213	ALA	2.5
1	B	190	VAL	2.5
1	C	146	ALA	2.5
1	C	156	TYR	2.4
1	B	187	GLU	2.4
1	C	184	PHE	2.3
1	C	151	VAL	2.3
1	D	216	ASN	2.3
1	C	197	VAL	2.3
1	C	4	GLU	2.2
1	B	191	LYS	2.2
1	D	67	ASP	2.2
1	C	50	GLU	2.2

*Continued on next page...*

*Continued from previous page...*

Mol	Chain	Res	Type	RSRZ
1	D	47	ASN	2.1
1	C	165	GLN	2.1

## 6.2 Non-standard residues in protein, DNA, RNA chains [i](#)

There are no non-standard protein/DNA/RNA residues in this entry.

## 6.3 Carbohydrates [i](#)

There are no carbohydrates in this entry.

## 6.4 Ligands [i](#)

In the following table, the Atoms column lists the number of modelled atoms in the group and the number defined in the chemical component dictionary. LLDF column lists the quality of electron density of the group with respect to its neighbouring residues in protein, DNA or RNA chains. The B-factors column lists the minimum, median, 95<sup>th</sup> percentile and maximum values of B factors of atoms in the group. The column labelled 'Q< 0.9' lists the number of atoms with occupancy less than 0.9.

Mol	Type	Chain	Res	Atoms	RSCC	RSR	LLDF	B-factors( $\text{\AA}^2$ )	Q<0.9
2	C2E	C	225	46/46	0.95	0.18	-0.32	38,49,56,59	0
2	C2E	B	225	46/46	0.98	0.17	-0.76	22,26,33,35	0
2	C2E	D	225	46/46	0.95	0.17	-1.03	40,49,53,54	0
2	C2E	A	225	46/46	0.98	0.17	-1.44	22,28,33,35	0
3	TAR	D	226	10/10	0.65	0.24	-	53,61,69,72	0
3	TAR	B	226	10/10	0.72	0.57	-	46,54,65,65	0

## 6.5 Other polymers [i](#)

There are no such residues in this entry.