



wwPDB X-ray Structure Validation Summary Report ⓘ

Sep 4, 2016 – 05:13 AM EDT

PDB ID : 5KMD
Title : Structure of CavAb in complex with amlodipine
Authors : Tang, L.; Gamal EL-Din, T.M.; Swanson, T.M.; Pryde, D.C.; Scheuer, T.;
Zheng, N.; Catterall, W.A.
Deposited on : 2016-06-26
Resolution : 3.20 Å(reported)

This is a wwPDB X-ray Structure Validation Summary Report for a publicly released PDB entry.

We welcome your comments at validation@mail.wwpdb.org

A user guide is available at

<http://wwpdb.org/validation/2016/XrayValidationReportHelp>

with specific help available everywhere you see the ⓘ symbol.

The following versions of software and data (see [references ⓘ](#)) were used in the production of this report:

MolProbity : 4.02b-467
Mogul : 1.7.1 (RC1), CSD as537be (2016)
Xtriage (Phenix) : 1.9-1692
EDS : rb-20027939
Percentile statistics : 20151230.v01 (using entries in the PDB archive December 30th 2015)
Refmac : 5.8.0135
CCP4 : 6.5.0
Ideal geometry (proteins) : Engh & Huber (2001)
Ideal geometry (DNA, RNA) : Parkinson et al. (1996)
Validation Pipeline (wwPDB-VP) : rb-20027939

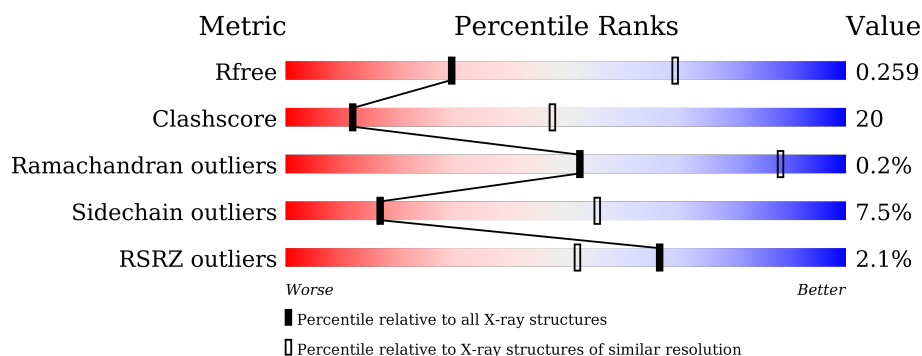
1 Overall quality at a glance

The following experimental techniques were used to determine the structure:

X-RAY DIFFRACTION

The reported resolution of this entry is 3.20 Å.

Percentile scores (ranging between 0-100) for global validation metrics of the entry are shown in the following graphic. The table shows the number of entries on which the scores are based.



Metric	Whole archive (#Entries)	Similar resolution (#Entries, resolution range(Å))
R_{free}	91344	1124 (3.24-3.16)
Clashscore	102246	1024 (3.22-3.18)
Ramachandran outliers	100387	1004 (3.22-3.18)
Sidechain outliers	100360	1003 (3.22-3.18)
RSRZ outliers	91569	1129 (3.24-3.16)

The table below summarises the geometric issues observed across the polymeric chains and their fit to the electron density. The red, orange, yellow and green segments on the lower bar indicate the fraction of residues that contain outliers for ≥ 3 , 2, 1 and 0 types of geometric quality criteria. A grey segment represents the fraction of residues that are not modelled. The numeric value for each fraction is indicated below the corresponding segment, with a dot representing fractions $\leq 5\%$. The upper red bar (where present) indicates the fraction of residues that have poor fit to the electron density. The numeric value is given above the bar.

Mol	Chain	Length	Quality of chain
1	A	285	<div> <div>2%</div> <div>44% 30% 23%</div> </div>
1	B	285	<div> <div>39% 34% 23%</div> </div>
1	C	285	<div> <div>2%</div> <div>47% 27% 23%</div> </div>
1	D	285	<div> <div>2%</div> <div>49% 25% 23%</div> </div>

The following table lists non-polymeric compounds, carbohydrate monomers and non-standard residues in protein, DNA, RNA chains that are outliers for geometric or electron-density-fit crite-

ria:

Mol	Type	Chain	Res	Chirality	Geometry	Clashes	Electron density
2	MC3	A	1302	-	-	-	X

2 Entry composition

There are 5 unique types of molecules in this entry. The entry contains 7380 atoms, of which 0 are hydrogens and 0 are deuteriums.

In the tables below, the ZeroOcc column contains the number of atoms modelled with zero occupancy, the AltConf column contains the number of residues with at least one atom in alternate conformation and the Trace column contains the number of residues modelled with at most 2 atoms.

- Molecule 1 is a protein called Ion transport protein.

Mol	Chain	Residues	Atoms					ZeroOcc	AltConf	Trace
1	A	219	Total	C	N	O	S	0	0	0
			1798	1225	268	295	10			
1	B	219	Total	C	N	O	S	0	0	0
			1798	1225	268	295	10			
1	C	219	Total	C	N	O	S	0	0	0
			1798	1225	268	295	10			
1	D	219	Total	C	N	O	S	0	0	0
			1798	1225	268	295	10			

There are 88 discrepancies between the modelled and reference sequences:

Chain	Residue	Modelled	Actual	Comment	Reference
A	983	MET	-	initiating methionine	UNP A8EVM5
A	984	ASP	-	expression tag	UNP A8EVM5
A	985	TYR	-	expression tag	UNP A8EVM5
A	986	LYS	-	expression tag	UNP A8EVM5
A	987	ASP	-	expression tag	UNP A8EVM5
A	988	ASP	-	expression tag	UNP A8EVM5
A	989	ASP	-	expression tag	UNP A8EVM5
A	990	ASP	-	expression tag	UNP A8EVM5
A	991	LYS	-	expression tag	UNP A8EVM5
A	992	GLY	-	expression tag	UNP A8EVM5
A	993	SER	-	expression tag	UNP A8EVM5
A	994	LEU	-	expression tag	UNP A8EVM5
A	995	VAL	-	expression tag	UNP A8EVM5
A	996	PRO	-	expression tag	UNP A8EVM5
A	997	ARG	-	expression tag	UNP A8EVM5
A	998	GLY	-	expression tag	UNP A8EVM5
A	999	SER	-	expression tag	UNP A8EVM5
A	1000	HIS	-	expression tag	UNP A8EVM5
A	1177	ASP	GLU	conflict	UNP A8EVM5
A	1178	ASP	SER	conflict	UNP A8EVM5
A	1181	ASN	MET	conflict	UNP A8EVM5

Continued on next page...

Continued from previous page...

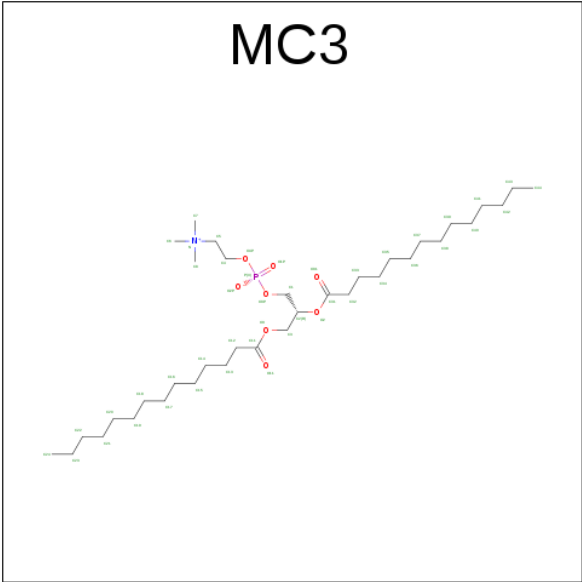
Chain	Residue	Modelled	Actual	Comment	Reference
A	1195	TYR	TRP	conflict	UNP A8EVM5
B	983	MET	-	initiating methionine	UNP A8EVM5
B	984	ASP	-	expression tag	UNP A8EVM5
B	985	TYR	-	expression tag	UNP A8EVM5
B	986	LYS	-	expression tag	UNP A8EVM5
B	987	ASP	-	expression tag	UNP A8EVM5
B	988	ASP	-	expression tag	UNP A8EVM5
B	989	ASP	-	expression tag	UNP A8EVM5
B	990	ASP	-	expression tag	UNP A8EVM5
B	991	LYS	-	expression tag	UNP A8EVM5
B	992	GLY	-	expression tag	UNP A8EVM5
B	993	SER	-	expression tag	UNP A8EVM5
B	994	LEU	-	expression tag	UNP A8EVM5
B	995	VAL	-	expression tag	UNP A8EVM5
B	996	PRO	-	expression tag	UNP A8EVM5
B	997	ARG	-	expression tag	UNP A8EVM5
B	998	GLY	-	expression tag	UNP A8EVM5
B	999	SER	-	expression tag	UNP A8EVM5
B	1000	HIS	-	expression tag	UNP A8EVM5
B	1177	ASP	GLU	conflict	UNP A8EVM5
B	1178	ASP	SER	conflict	UNP A8EVM5
B	1181	ASN	MET	conflict	UNP A8EVM5
B	1195	TYR	TRP	conflict	UNP A8EVM5
C	983	MET	-	initiating methionine	UNP A8EVM5
C	984	ASP	-	expression tag	UNP A8EVM5
C	985	TYR	-	expression tag	UNP A8EVM5
C	986	LYS	-	expression tag	UNP A8EVM5
C	987	ASP	-	expression tag	UNP A8EVM5
C	988	ASP	-	expression tag	UNP A8EVM5
C	989	ASP	-	expression tag	UNP A8EVM5
C	990	ASP	-	expression tag	UNP A8EVM5
C	991	LYS	-	expression tag	UNP A8EVM5
C	992	GLY	-	expression tag	UNP A8EVM5
C	993	SER	-	expression tag	UNP A8EVM5
C	994	LEU	-	expression tag	UNP A8EVM5
C	995	VAL	-	expression tag	UNP A8EVM5
C	996	PRO	-	expression tag	UNP A8EVM5
C	997	ARG	-	expression tag	UNP A8EVM5
C	998	GLY	-	expression tag	UNP A8EVM5
C	999	SER	-	expression tag	UNP A8EVM5
C	1000	HIS	-	expression tag	UNP A8EVM5
C	1177	ASP	GLU	conflict	UNP A8EVM5

Continued on next page...

Continued from previous page...

Chain	Residue	Modelled	Actual	Comment	Reference
C	1178	ASP	SER	conflict	UNP A8EVM5
C	1181	ASN	MET	conflict	UNP A8EVM5
C	1195	TYR	TRP	conflict	UNP A8EVM5
D	983	MET	-	initiating methionine	UNP A8EVM5
D	984	ASP	-	expression tag	UNP A8EVM5
D	985	TYR	-	expression tag	UNP A8EVM5
D	986	LYS	-	expression tag	UNP A8EVM5
D	987	ASP	-	expression tag	UNP A8EVM5
D	988	ASP	-	expression tag	UNP A8EVM5
D	989	ASP	-	expression tag	UNP A8EVM5
D	990	ASP	-	expression tag	UNP A8EVM5
D	991	LYS	-	expression tag	UNP A8EVM5
D	992	GLY	-	expression tag	UNP A8EVM5
D	993	SER	-	expression tag	UNP A8EVM5
D	994	LEU	-	expression tag	UNP A8EVM5
D	995	VAL	-	expression tag	UNP A8EVM5
D	996	PRO	-	expression tag	UNP A8EVM5
D	997	ARG	-	expression tag	UNP A8EVM5
D	998	GLY	-	expression tag	UNP A8EVM5
D	999	SER	-	expression tag	UNP A8EVM5
D	1000	HIS	-	expression tag	UNP A8EVM5
D	1177	ASP	GLU	conflict	UNP A8EVM5
D	1178	ASP	SER	conflict	UNP A8EVM5
D	1181	ASN	MET	conflict	UNP A8EVM5
D	1195	TYR	TRP	conflict	UNP A8EVM5

- Molecule 2 is 1,2-DIMYRISTOYL-RAC-GLYCERO-3-PHOSPHOCHOLINE (three-letter code: MC3) (formula: C₃₆H₇₂NO₈P).

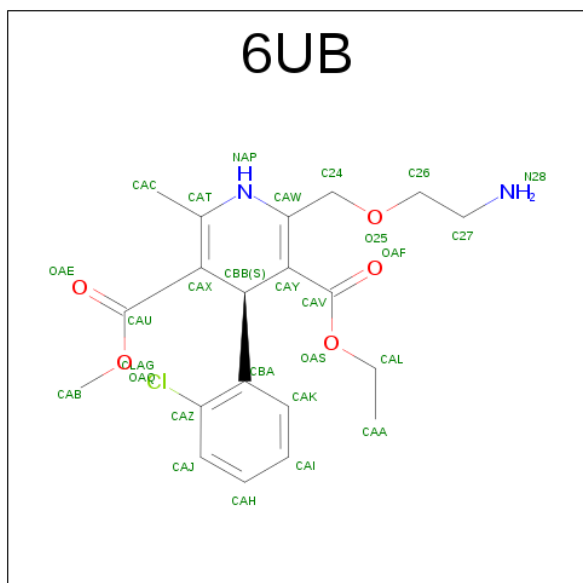


Mol	Chain	Residues	Atoms				ZeroOcc	AltConf
2	A	1	Total	C			0	0
			6	6				
2	A	1	Total	C			0	0
			6	6				
2	A	1	Total	C	O	P	0	0
			21	13	7	1		
2	A	1	Total	C	O	P	0	0
			21	13	7	1		
2	A	1	Total	C	O	P	0	0
			10	3	6	1		
2	A	1	Total	C	O	P	0	0
			10	3	6	1		
2	A	1	Total	C	O	P	0	0
			10	3	6	1		
2	B	1	Total	C			0	0
			6	6				
2	B	1	Total	C	O	P	0	0
			21	13	7	1		
2	B	1	Total	C	O	P	0	0
			10	3	6	1		
2	C	1	Total	C	O	P	0	0
			10	3	6	1		
2	C	1	Total	C	O	P	0	0
			10	3	6	1		
2	D	1	Total	C			0	0
			6	6				
2	D	1	Total	C	O	P	0	0
			10	3	6	1		

- Molecule 3 is CALCIUM ION (three-letter code: CA) (formula: Ca).

Mol	Chain	Residues	Atoms		ZeroOcc	AltConf
3	D	1	Total	Ca	0	0
			1	1		
3	C	1	Total	Ca	0	0
			1	1		

- Molecule 4 is amlodipine (three-letter code: 6UB) (formula: C₂₀H₂₅ClN₂O₅).



Mol	Chain	Residues	Atoms					ZeroOcc	AltConf
4	C	1	Total	C	Cl	N	O	0	0
			28	20	1	2	5		

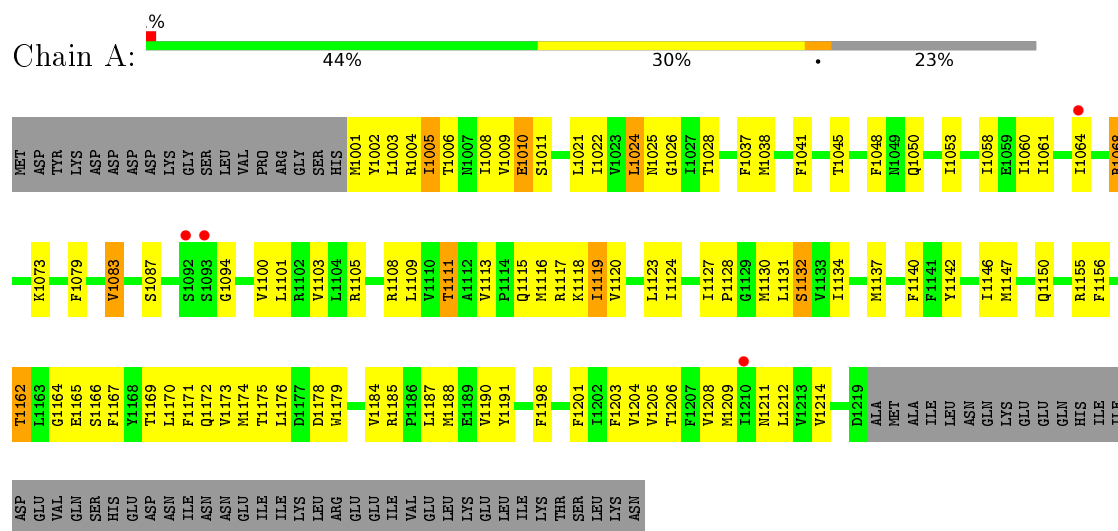
- Molecule 5 is water.

Mol	Chain	Residues	Atoms		ZeroOcc	AltConf
5	C	1	Total	O	0	0
			1	1		

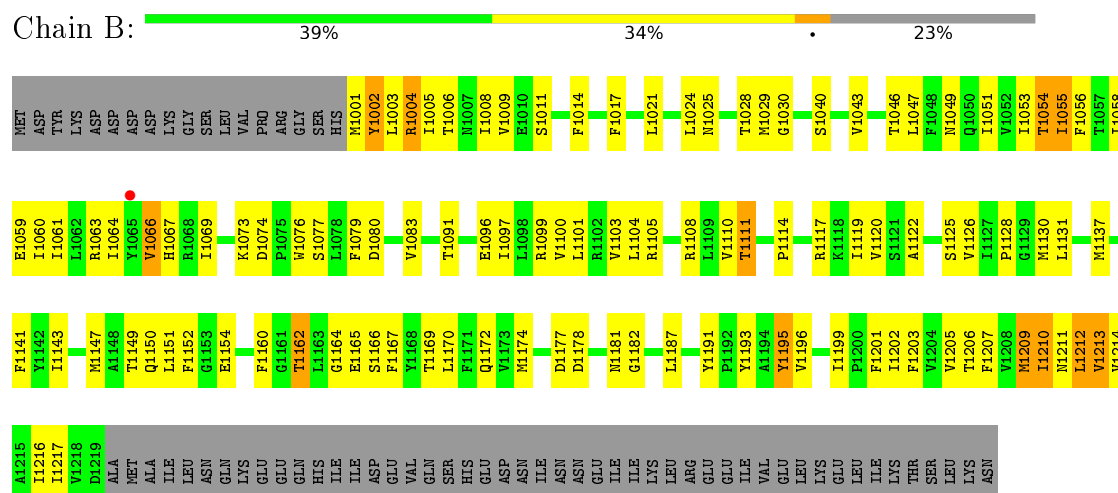
3 Residue-property plots

These plots are drawn for all protein, RNA and DNA chains in the entry. The first graphic for a chain summarises the proportions of errors displayed in the second graphic. The second graphic shows the sequence view annotated by issues in geometry and electron density. Residues are color-coded according to the number of geometric quality criteria for which they contain at least one outlier: green = 0, yellow = 1, orange = 2 and red = 3 or more. A red dot above a residue indicates a poor fit to the electron density ($RSRZ > 2$). Stretches of 2 or more consecutive residues without any outlier are shown as a green connector. Residues present in the sample, but not in the model, are shown in grey.

- Molecule 1: Ion transport protein

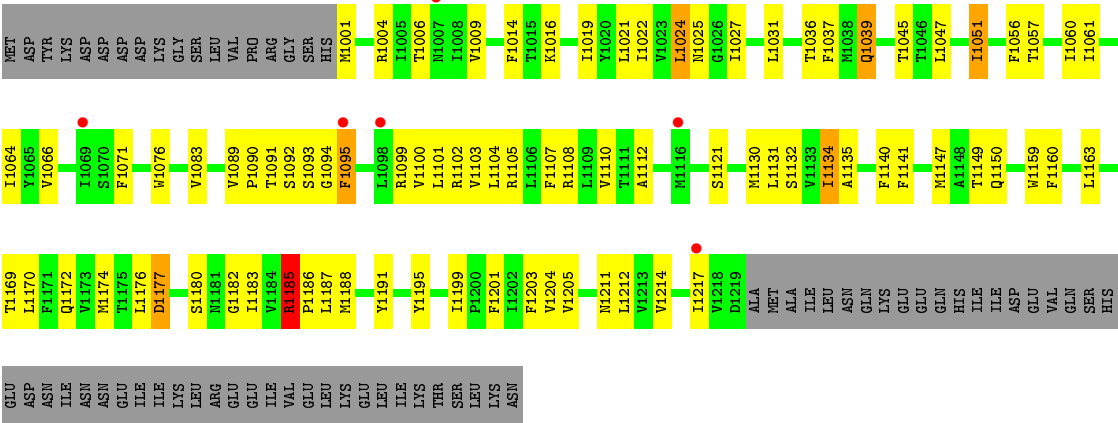


- Molecule 1: Ion transport protein

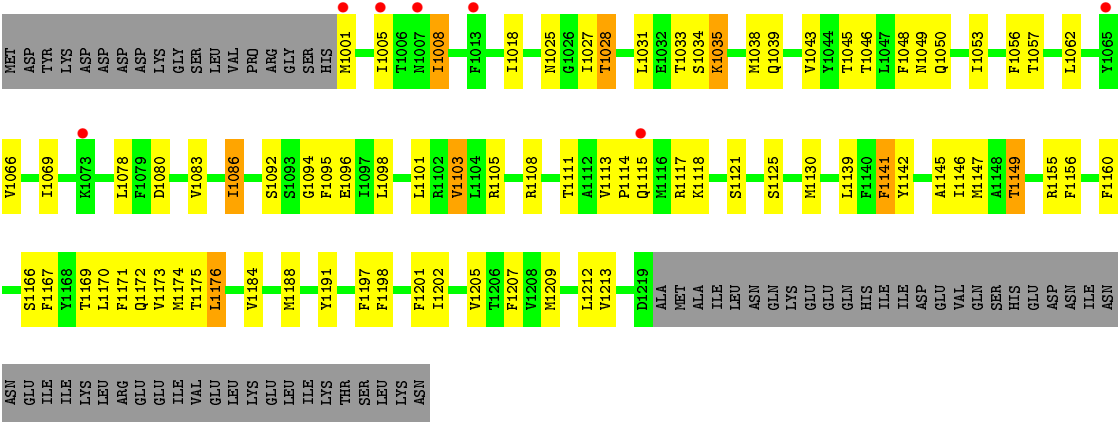


- Molecule 1: Ion transport protein





● Molecule 1: Ion transport protein



4 Data and refinement statistics

Property	Value	Source
Space group	P 21 2 21	Depositor
Cell constants a, b, c, α , β , γ	125.64Å 125.53Å 191.70Å 90.00° 90.00° 90.00°	Depositor
Resolution (Å)	29.85 – 3.20 29.82 – 3.10	Depositor EDS
% Data completeness (in resolution range)	86.4 (29.85-3.20) 87.0 (29.82-3.10)	Depositor EDS
R_{merge}	0.12	Depositor
R_{sym}	(Not available)	Depositor
$\langle I/\sigma(I) \rangle$ ¹	1.82 (at 3.11Å)	Xtriage
Refinement program	REFMAC 5.8.0073	Depositor
R, R_{free}	0.233 , 0.277 0.213 , 0.259	Depositor DCC
R_{free} test set	2127 reflections (5.10%)	DCC
Wilson B-factor (Å ²)	77.4	Xtriage
Anisotropy	0.465	Xtriage
Bulk solvent k_{sol} (e/Å ³), B_{sol} (Å ²)	0.30 , 59.4	EDS
L-test for twinning ²	$\langle L \rangle = 0.40$, $\langle L^2 \rangle = 0.23$	Xtriage
Estimated twinning fraction	0.440 for k,h,-l	Xtriage
Reported twinning fraction	0.500 for H, K, L 0.500 for K, H, -L	Depositor
Outliers	0 of 48489 reflections	Xtriage
F_o, F_c correlation	0.91	EDS
Total number of atoms	7380	wwPDB-VP
Average B, all atoms (Å ²)	100.0	wwPDB-VP

Xtriage's analysis on translational NCS is as follows: *The largest off-origin peak in the Patterson function is 7.30% of the height of the origin peak. No significant pseudotranslation is detected.*

¹Intensities estimated from amplitudes.

²Theoretical values of $\langle |L| \rangle$, $\langle L^2 \rangle$ for acentric reflections are 0.5, 0.333 respectively for untwinned datasets, and 0.375, 0.2 for perfectly twinned datasets.

5 Model quality

5.1 Standard geometry

Bond lengths and bond angles in the following residue types are not validated in this section: MC3, CA, 6UB

The Z score for a bond length (or angle) is the number of standard deviations the observed value is removed from the expected value. A bond length (or angle) with $|Z| > 5$ is considered an outlier worth inspection. RMSZ is the root-mean-square of all Z scores of the bond lengths (or angles).

Mol	Chain	Bond lengths		Bond angles	
		RMSZ	$\# Z > 5$	RMSZ	$\# Z > 5$
1	A	0.69	0/1848	0.85	3/2515 (0.1%)
1	B	0.62	0/1848	0.82	0/2515
1	C	0.71	1/1848 (0.1%)	0.90	2/2515 (0.1%)
1	D	0.60	0/1848	0.84	0/2515
All	All	0.66	1/7392 (0.0%)	0.85	5/10060 (0.0%)

Chiral center outliers are detected by calculating the chiral volume of a chiral center and verifying if the center is modelled as a planar moiety or with the opposite hand. A planarity outlier is detected by checking planarity of atoms in a peptide group, atoms in a mainchain group or atoms of a sidechain that are expected to be planar.

Mol	Chain	#Chirality outliers	#Planarity outliers
1	B	0	1
1	D	0	1
All	All	0	2

All (1) bond length outliers are listed below:

Mol	Chain	Res	Type	Atoms	Z	Observed(Å)	Ideal(Å)
1	C	1159	TRP	CB-CG	5.31	1.59	1.50

All (5) bond angle outliers are listed below:

Mol	Chain	Res	Type	Atoms	Z	Observed(°)	Ideal(°)
1	A	1113	VAL	C-N-CD	5.72	140.41	128.40
1	C	1177	ASP	CB-CG-OD1	-5.41	113.43	118.30
1	A	1094	GLY	N-CA-C	5.27	126.28	113.10
1	C	1185	ARG	C-N-CD	5.22	139.36	128.40
1	A	1146	ILE	CG1-CB-CG2	-5.19	99.99	111.40

There are no chirality outliers.

All (2) planarity outliers are listed below:

Mol	Chain	Res	Type	Group
1	B	1181	ASN	Mainchain
1	D	1207	PHE	Mainchain

5.2 Too-close contacts ⓘ

In the following table, the Non-H and H(model) columns list the number of non-hydrogen atoms and hydrogen atoms in the chain respectively. The H(added) column lists the number of hydrogen atoms added and optimized by MolProbity. The Clashes column lists the number of clashes within the asymmetric unit, whereas Symm-Clashes lists symmetry related clashes.

Mol	Chain	Non-H	H(model)	H(added)	Clashes	Symm-Clashes
1	A	1798	0	1868	90	0
1	B	1798	0	1868	109	0
1	C	1798	0	1868	61	0
1	D	1798	0	1868	63	0
2	A	84	0	69	7	0
2	B	37	0	32	6	0
2	C	20	0	10	0	0
2	D	16	0	13	0	0
3	C	1	0	0	0	0
3	D	1	0	0	0	0
4	C	28	0	0	1	0
5	C	1	0	0	0	0
All	All	7380	0	7596	300	0

The all-atom clashscore is defined as the number of clashes found per 1000 atoms (including hydrogen atoms). The all-atom clashscore for this structure is 20.

The worst 5 of 300 close contacts within the same asymmetric unit are listed below, sorted by their clash magnitude.

Atom-1	Atom-2	Interatomic distance (Å)	Clash overlap (Å)
1:B:1002:TYR:HA	1:B:1004:ARG:HH11	1.17	1.06
1:A:1005:ILE:O	1:A:1008:ILE:HG22	1.57	1.03
1:B:1174:MET:HG3	1:B:1205:VAL:HG11	1.36	1.02
1:A:1108:ARG:O	1:A:1111:THR:HG22	1.69	0.91
1:B:1002:TYR:HA	1:B:1004:ARG:NH1	1.87	0.90

There are no symmetry-related clashes.

5.3 Torsion angles [i](#)

5.3.1 Protein backbone [i](#)

In the following table, the Percentiles column shows the percent Ramachandran outliers of the chain as a percentile score with respect to all X-ray entries followed by that with respect to entries of similar resolution.

The Analysed column shows the number of residues for which the backbone conformation was analysed, and the total number of residues.

Mol	Chain	Analysed	Favoured	Allowed	Outliers	Percentiles	
1	A	217/285 (76%)	205 (94%)	12 (6%)	0	100	100
1	B	217/285 (76%)	212 (98%)	5 (2%)	0	100	100
1	C	217/285 (76%)	204 (94%)	12 (6%)	1 (0%)	34	78
1	D	217/285 (76%)	205 (94%)	11 (5%)	1 (0%)	34	78
All	All	868/1140 (76%)	826 (95%)	40 (5%)	2 (0%)	52	88

All (2) Ramachandran outliers are listed below:

Mol	Chain	Res	Type
1	D	1094	GLY
1	C	1131	LEU

5.3.2 Protein sidechains [i](#)

In the following table, the Percentiles column shows the percent sidechain outliers of the chain as a percentile score with respect to all X-ray entries followed by that with respect to entries of similar resolution.

The Analysed column shows the number of residues for which the sidechain conformation was analysed, and the total number of residues.

Mol	Chain	Analysed	Rotameric	Outliers	Percentiles	
1	A	202/264 (76%)	188 (93%)	14 (7%)	19	59
1	B	202/264 (76%)	182 (90%)	20 (10%)	10	38
1	C	202/264 (76%)	191 (95%)	11 (5%)	27	68
1	D	202/264 (76%)	186 (92%)	16 (8%)	15	53
All	All	808/1056 (76%)	747 (92%)	61 (8%)	17	55

5 of 61 residues with a non-rotameric sidechain are listed below:

Mol	Chain	Res	Type
1	B	1187	LEU
1	C	1016	LYS
1	D	1141	PHE
1	B	1195	TYR
1	B	1209	MET

Some sidechains can be flipped to improve hydrogen bonding and reduce clashes. There are no such sidechains identified.

5.3.3 RNA ⓘ

There are no RNA molecules in this entry.

5.4 Non-standard residues in protein, DNA, RNA chains ⓘ

There are no non-standard protein/DNA/RNA residues in this entry.

5.5 Carbohydrates ⓘ

There are no carbohydrates in this entry.

5.6 Ligand geometry ⓘ

Of 17 ligands modelled in this entry, 2 are monoatomic - leaving 15 for Mogul analysis.

In the following table, the Counts columns list the number of bonds (or angles) for which Mogul statistics could be retrieved, the number of bonds (or angles) that are observed in the model and the number of bonds (or angles) that are defined in the chemical component dictionary. The Link column lists molecule types, if any, to which the group is linked. The Z score for a bond length (or angle) is the number of standard deviations the observed value is removed from the expected value. A bond length (or angle) with $|Z| > 2$ is considered an outlier worth inspection. RMSZ is the root-mean-square of all Z scores of the bond lengths (or angles).

Mol	Type	Chain	Res	Link	Bond lengths			Bond angles		
					Counts	RMSZ	$\# Z > 2$	Counts	RMSZ	$\# Z > 2$
2	MC3	A	1301	-	5,5,45	0.36	0	4,4,53	0.36	0
2	MC3	A	1302	-	5,5,45	0.60	0	4,4,53	0.32	0
2	MC3	A	1303	-	20,20,45	1.81	4 (20%)	21,24,53	1.56	3 (14%)
2	MC3	A	1304	-	20,20,45	1.75	2 (10%)	21,24,53	1.57	2 (9%)
2	MC3	A	1305	-	9,9,45	0.97	1 (11%)	11,12,53	1.26	1 (9%)
2	MC3	A	1306	-	9,9,45	1.04	1 (11%)	11,12,53	1.00	1 (9%)

Mol	Type	Chain	Res	Link	Bond lengths			Bond angles		
					Counts	RMSZ	# Z > 2	Counts	RMSZ	# Z > 2
2	MC3	A	1307	-	9,9,45	0.90	1 (11%)	11,12,53	1.13	1 (9%)
2	MC3	B	1301	-	5,5,45	0.47	0	4,4,53	0.56	0
2	MC3	B	1302	-	20,20,45	1.90	4 (20%)	21,24,53	1.50	2 (9%)
2	MC3	B	1303	-	9,9,45	1.20	1 (11%)	11,12,53	1.06	1 (9%)
2	MC3	C	1302	-	9,9,45	1.22	1 (11%)	11,12,53	1.19	2 (18%)
2	MC3	C	1303	-	9,9,45	1.01	1 (11%)	11,12,53	0.86	0
4	6UB	C	1304	-	28,29,29	3.90	13 (46%)	35,39,39	5.14	20 (57%)
2	MC3	D	1302	-	5,5,45	0.52	0	4,4,53	0.28	0
2	MC3	D	1303	-	9,9,45	1.02	1 (11%)	11,12,53	0.83	0

In the following table, the Chirals column lists the number of chiral outliers, the number of chiral centers analysed, the number of these observed in the model and the number defined in the chemical component dictionary. Similar counts are reported in the Torsion and Rings columns. '-' means no outliers of that kind were identified.

Mol	Type	Chain	Res	Link	Chirals	Torsions	Rings
2	MC3	A	1301	-	-	0/3/3/49	0/0/0/0
2	MC3	A	1302	-	-	0/3/3/49	0/0/0/0
2	MC3	A	1303	-	-	0/22/22/49	0/0/0/0
2	MC3	A	1304	-	-	0/22/22/49	0/0/0/0
2	MC3	A	1305	-	-	0/8/8/49	0/0/0/0
2	MC3	A	1306	-	-	0/8/8/49	0/0/0/0
2	MC3	A	1307	-	-	0/8/8/49	0/0/0/0
2	MC3	B	1301	-	-	0/3/3/49	0/0/0/0
2	MC3	B	1302	-	-	0/22/22/49	0/0/0/0
2	MC3	B	1303	-	-	0/8/8/49	0/0/0/0
2	MC3	C	1302	-	-	0/8/8/49	0/0/0/0
2	MC3	C	1303	-	-	0/8/8/49	0/0/0/0
4	6UB	C	1304	-	-	0/22/42/42	0/2/2/2
2	MC3	D	1302	-	-	0/3/3/49	0/0/0/0
2	MC3	D	1303	-	-	0/8/8/49	0/0/0/0

The worst 5 of 30 bond length outliers are listed below:

Mol	Chain	Res	Type	Atoms	Z	Observed(Å)	Ideal(Å)
4	C	1304	6UB	C24-CAW	-3.20	1.44	1.50
4	C	1304	6UB	OAE-CAU	-2.80	1.15	1.21
2	A	1303	MC3	O3-C3	-2.63	1.39	1.45
2	B	1302	MC3	O3-C3	-2.02	1.40	1.45
2	B	1302	MC3	P-O4P	2.00	1.67	1.59

The worst 5 of 33 bond angle outliers are listed below:

Mol	Chain	Res	Type	Atoms	Z	Observed(°)	Ideal(°)
4	C	1304	6UB	CAT-NAP-CAW	-23.09	100.58	122.35
4	C	1304	6UB	CBB-CAY-CAW	-6.20	114.21	121.53
4	C	1304	6UB	CAY-CAW-NAP	-6.12	113.81	120.58
2	A	1303	MC3	O3-C11-O11	-5.53	109.00	123.51
4	C	1304	6UB	CBB-CAX-CAT	-5.39	110.01	120.99

There are no chirality outliers.

There are no torsion outliers.

There are no ring outliers.

7 monomers are involved in 14 short contacts:

Mol	Chain	Res	Type	Clashes	Symm-Clashes
2	A	1302	MC3	2	0
2	A	1303	MC3	3	0
2	A	1304	MC3	2	0
2	B	1301	MC3	1	0
2	B	1302	MC3	1	0
2	B	1303	MC3	4	0
4	C	1304	6UB	1	0

5.7 Other polymers [i](#)

There are no such residues in this entry.

5.8 Polymer linkage issues [i](#)

There are no chain breaks in this entry.

6 Fit of model and data [i](#)

6.1 Protein, DNA and RNA chains [i](#)

In the following table, the column labelled ‘#RSRZ> 2’ contains the number (and percentage) of RSRZ outliers, followed by percent RSRZ outliers for the chain as percentile scores relative to all X-ray entries and entries of similar resolution. The OWAB column contains the minimum, median, 95th percentile and maximum values of the occupancy-weighted average B-factor per residue. The column labelled ‘Q< 0.9’ lists the number of (and percentage) of residues with an average occupancy less than 0.9.

Mol	Chain	Analysed	<RSRZ>	#RSRZ>2	OWAB(Å ²)	Q<0.9
1	A	219/285 (76%)	0.17	4 (1%) 71 58	16, 101, 174, 220	0
1	B	219/285 (76%)	0.10	1 (0%) 91 87	24, 103, 161, 191	0
1	C	219/285 (76%)	0.15	6 (2%) 58 44	21, 101, 164, 199	0
1	D	219/285 (76%)	0.17	7 (3%) 51 36	24, 103, 158, 201	0
All	All	876/1140 (76%)	0.15	18 (2%) 67 52	16, 102, 165, 220	0

The worst 5 of 18 RSRZ outliers are listed below:

Mol	Chain	Res	Type	RSRZ
1	A	1092	SER	4.0
1	C	1116	MET	3.9
1	A	1093	SER	3.4
1	D	1001	MET	3.3
1	A	1064	ILE	3.1

6.2 Non-standard residues in protein, DNA, RNA chains [i](#)

There are no non-standard protein/DNA/RNA residues in this entry.

6.3 Carbohydrates [i](#)

There are no carbohydrates in this entry.

6.4 Ligands [i](#)

In the following table, the Atoms column lists the number of modelled atoms in the group and the number defined in the chemical component dictionary. LLDF column lists the quality of electron density of the group with respect to its neighbouring residues in protein, DNA or RNA chains. The B-factors column lists the minimum, median, 95th percentile and maximum values of B factors

of atoms in the group. The column labelled 'Q< 0.9' lists the number of atoms with occupancy less than 0.9.

Mol	Type	Chain	Res	Atoms	RSCC	RSR	LLDF	B-factors(\AA^2)	Q<0.9
2	MC3	A	1302	6/46	0.95	0.36	2.91	25,28,35,37	0
2	MC3	A	1301	6/46	0.93	0.30	1.00	28,36,41,44	0
2	MC3	A	1303	21/46	0.95	0.28	0.72	60,86,107,116	0
4	6UB	C	1304	28/28	0.86	0.31	0.71	45,87,115,121	0
2	MC3	B	1301	6/46	0.94	0.28	0.36	18,22,26,27	0
2	MC3	A	1304	21/46	0.93	0.25	0.20	44,66,83,85	0
3	CA	C	1301	1/1	0.95	0.23	-0.10	56,56,56,56	0
2	MC3	B	1302	21/46	0.92	0.24	-0.16	57,67,88,95	0
2	MC3	A	1307	10/46	0.94	0.19	-0.34	103,116,125,130	0
2	MC3	C	1303	10/46	0.94	0.19	-0.53	90,107,113,115	0
3	CA	D	1301	1/1	0.99	0.20	-0.88	39,39,39,39	0
2	MC3	B	1303	10/46	0.94	0.22	-0.95	58,68,104,113	0
2	MC3	A	1305	10/46	0.93	0.17	-1.77	60,89,114,118	0
2	MC3	C	1302	10/46	0.90	0.21	-2.43	57,81,109,109	0
2	MC3	A	1306	10/46	0.92	0.20	-	93,115,124,127	0
2	MC3	D	1302	6/46	0.96	0.24	-	34,36,43,46	0
2	MC3	D	1303	10/46	0.90	0.14	-	81,112,129,133	0

6.5 Other polymers [i](#)

There are no such residues in this entry.