



wwPDB X-ray Structure Validation Summary Report ⓘ

Feb 1, 2016 – 06:08 PM GMT

PDB ID : 4KNE
Title : Crystal structure of dihydrofolate reductase from Mycobacterium tuberculosis
in complex with cycloguanil
Authors : Dias, M.V.B; Tyrakis, P.; Blundell, T.L.
Deposited on : 2013-05-09
Resolution : 2.00 Å(reported)

This is a wwPDB X-ray Structure Validation Summary Report for a publicly released PDB entry.
We welcome your comments at validation@mail.wwpdb.org
A user guide is available at
<http://wwpdb.org/validation/2016/XrayValidationReportHelp>
with specific help available everywhere you see the ⓘ symbol.

The following versions of software and data (see [references ⓘ](#)) were used in the production of this report:

MolProbity : 4.02b-467
Mogul : 1.7 (RC4), CSD as536be (2015)
Xtriage (Phenix) : 1.9-1692
EDS : rb-20026688
Percentile statistics : 20151230.v01 (using entries in the PDB archive December 30th 2015)
Refmac : 5.8.0135
CCP4 : 6.5.0
Ideal geometry (proteins) : Engh & Huber (2001)
Ideal geometry (DNA, RNA) : Parkinson et al. (1996)
Validation Pipeline (wwPDB-VP) : trunk26865

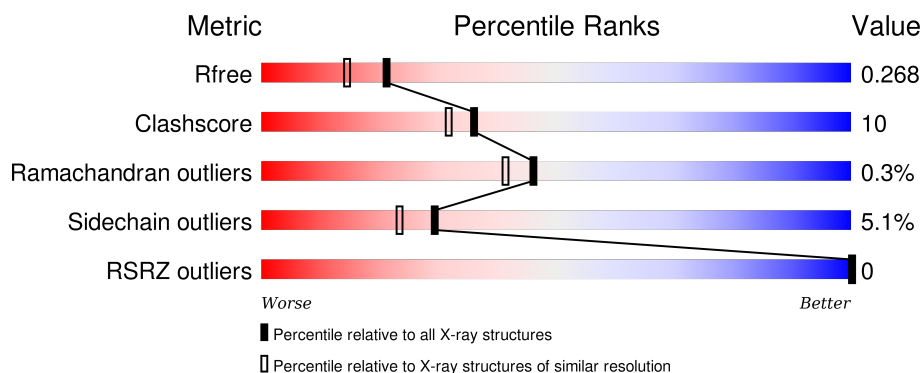
1 Overall quality at a glance

The following experimental techniques were used to determine the structure:

X-RAY DIFFRACTION



The reported resolution of this entry is 2.00 Å.

Percentile scores (ranging between 0-100) for global validation metrics of the entry are shown in the following graphic. The table shows the number of entries on which the scores are based.



Metric	Whole archive (#Entries)	Similar resolution (#Entries, resolution range(Å))
R_{free}	91344	6249 (2.00-2.00)
Clashscore	102246	7340 (2.00-2.00)
Ramachandran outliers	100387	7248 (2.00-2.00)
Sidechain outliers	100360	7247 (2.00-2.00)
RSRZ outliers	91569	6262 (2.00-2.00)

The table below summarises the geometric issues observed across the polymeric chains and their fit to the electron density. The red, orange, yellow and green segments on the lower bar indicate the fraction of residues that contain outliers for ≥ 3 , 2, 1 and 0 types of geometric quality criteria. A grey segment represents the fraction of residues that are not modelled. The numeric value for each fraction is indicated below the corresponding segment, with a dot representing fractions $\leq 5\%$. The upper red bar (where present) indicates the fraction of residues that have poor fit to the electron density. The numeric value is given above the bar.

Mol	Chain	Length	Quality of chain
1	A	179	 68% 19% • 11%
1	B	179	 75% 11% • 11%

2 Entry composition

There are 4 unique types of molecules in this entry. The entry contains 3023 atoms, of which 0 are hydrogens and 0 are deuteriums.

In the tables below, the ZeroOcc column contains the number of atoms modelled with zero occupancy, the AltConf column contains the number of residues with at least one atom in alternate conformation and the Trace column contains the number of residues modelled with at most 2 atoms.

- Molecule 1 is a protein called Dihydrofolate reductase.

Mol	Chain	Residues	Atoms					ZeroOcc	AltConf	Trace
1	A	159	Total	C	N	O	S	0	2	0
			1253	790	226	232	5			
1	B	159	Total	C	N	O	S	0	0	0
			1244	783	228	228	5			

There are 40 discrepancies between the modelled and reference sequences:

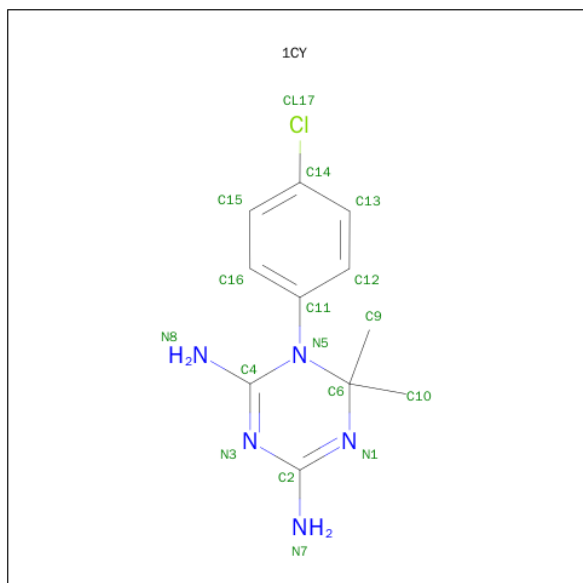
Chain	Residue	Modelled	Actual	Comment	Reference
A	-19	MET	-	EXPRESSION TAG	UNP P0A546
A	-18	GLY	-	EXPRESSION TAG	UNP P0A546
A	-17	SER	-	EXPRESSION TAG	UNP P0A546
A	-16	SER	-	EXPRESSION TAG	UNP P0A546
A	-15	HIS	-	EXPRESSION TAG	UNP P0A546
A	-14	HIS	-	EXPRESSION TAG	UNP P0A546
A	-13	HIS	-	EXPRESSION TAG	UNP P0A546
A	-12	HIS	-	EXPRESSION TAG	UNP P0A546
A	-11	HIS	-	EXPRESSION TAG	UNP P0A546
A	-10	HIS	-	EXPRESSION TAG	UNP P0A546
A	-9	SER	-	EXPRESSION TAG	UNP P0A546
A	-8	SER	-	EXPRESSION TAG	UNP P0A546
A	-7	GLY	-	EXPRESSION TAG	UNP P0A546
A	-6	LEU	-	EXPRESSION TAG	UNP P0A546
A	-5	VAL	-	EXPRESSION TAG	UNP P0A546
A	-4	PRO	-	EXPRESSION TAG	UNP P0A546
A	-3	ARG	-	EXPRESSION TAG	UNP P0A546
A	-2	GLY	-	EXPRESSION TAG	UNP P0A546
A	-1	SER	-	EXPRESSION TAG	UNP P0A546
A	0	HIS	-	EXPRESSION TAG	UNP P0A546
B	-19	MET	-	EXPRESSION TAG	UNP P0A546
B	-18	GLY	-	EXPRESSION TAG	UNP P0A546
B	-17	SER	-	EXPRESSION TAG	UNP P0A546
B	-16	SER	-	EXPRESSION TAG	UNP P0A546
B	-15	HIS	-	EXPRESSION TAG	UNP P0A546

Continued on next page...

Continued from previous page...

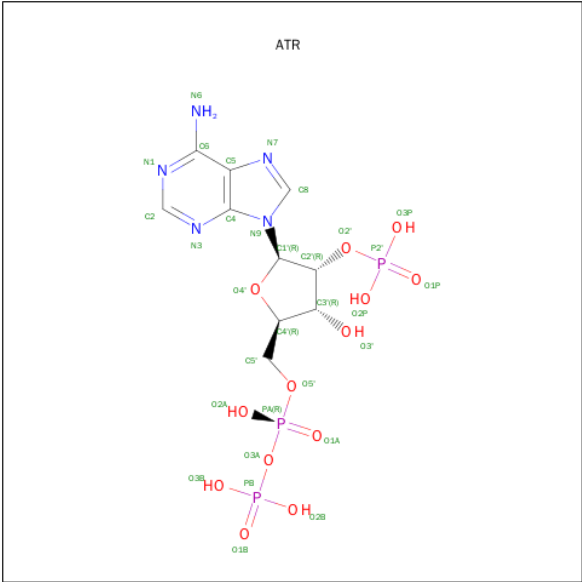
Chain	Residue	Modelled	Actual	Comment	Reference
B	-14	HIS	-	EXPRESSION TAG	UNP P0A546
B	-13	HIS	-	EXPRESSION TAG	UNP P0A546
B	-12	HIS	-	EXPRESSION TAG	UNP P0A546
B	-11	HIS	-	EXPRESSION TAG	UNP P0A546
B	-10	HIS	-	EXPRESSION TAG	UNP P0A546
B	-9	SER	-	EXPRESSION TAG	UNP P0A546
B	-8	SER	-	EXPRESSION TAG	UNP P0A546
B	-7	GLY	-	EXPRESSION TAG	UNP P0A546
B	-6	LEU	-	EXPRESSION TAG	UNP P0A546
B	-5	VAL	-	EXPRESSION TAG	UNP P0A546
B	-4	PRO	-	EXPRESSION TAG	UNP P0A546
B	-3	ARG	-	EXPRESSION TAG	UNP P0A546
B	-2	GLY	-	EXPRESSION TAG	UNP P0A546
B	-1	SER	-	EXPRESSION TAG	UNP P0A546
B	0	HIS	-	EXPRESSION TAG	UNP P0A546

- Molecule 2 is 1-(4-CHLOROPHENYL)-6,6-DIMETHYL-1,6-DIHYDRO-1,3,5-TRIAZINE-2,4-DIAMINE (three-letter code: 1CY) (formula: C₁₁H₁₄ClN₅).



Mol	Chain	Residues	Atoms			ZeroOcc	AltConf
2	A	1	Total	C	Cl	N	0
			17	11	1	5	
2	B	1	Total	C	Cl	N	0
			17	11	1	5	

- Molecule 3 is 2'-MONOPHOSPHOADENOSINE-5'-DIPHOSPHATE (three-letter code: ATR) (formula: C₁₀H₁₆N₅O₁₃P₃).

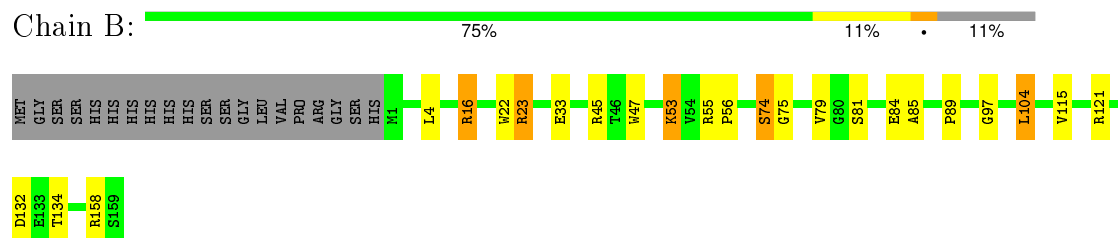
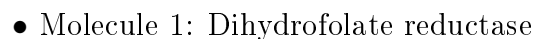


Mol	Chain	Residues	Atoms					ZeroOcc	AltConf
3	A	1	Total	C	N	O	P	0	0
			31	10	5	13	3		
3	B	1	Total	C	N	O	P	0	0
			31	10	5	13	3		

- Molecule 4 is water.

Mol	Chain	Residues	Atoms		ZeroOcc	AltConf
4	A	205	Total	O	0	0
			205	205		
4	B	225	Total	O	0	0
			225	225		

- Molecule 1: Dihydrofolate reductase



4 Data and refinement statistics

Property	Value	Source
Space group	P 1 21 1	Depositor
Cell constants a, b, c, α , β , γ	33.00 Å 63.90 Å 78.30 Å 90.00° 100.88° 90.00°	Depositor
Resolution (Å)	29.50 – 2.00 29.50 – 1.74	Depositor EDS
% Data completeness (in resolution range)	95.7 (29.50-2.00) 95.7 (29.50-1.74)	Depositor EDS
R_{merge}	(Not available)	Depositor
R_{sym}	0.17	Depositor
$\langle I/\sigma(I) \rangle$ ¹	1.75 (at 1.74 Å)	Xtriage
Refinement program	PHENIX (phenix.refine: 1.7.3_928)	Depositor
R, R_{free}	0.207 , 0.270 0.207 , 0.268	Depositor DCC
R_{free} test set	1057 reflections (5.36%)	DCC
Wilson B-factor (Å ²)	13.8	Xtriage
Anisotropy	0.419	Xtriage
Bulk solvent k_{sol} (e/Å ³), B_{sol} (Å ²)	0.32 , 42.4	EDS
Estimated twinning fraction	0.051 for h,-k,-h-l	Xtriage
L-test for twinning ²	$\langle L \rangle = 0.50$, $\langle L^2 \rangle = 0.33$	Xtriage
Outliers	1 of 31655 reflections (0.003%)	Xtriage
F_o, F_c correlation	0.92	EDS
Total number of atoms	3023	wwPDB-VP
Average B, all atoms (Å ²)	14.0	wwPDB-VP

Xtriage's analysis on translational NCS is as follows: *The largest off-origin peak in the Patterson function is 8.20% of the height of the origin peak. No significant pseudotranslation is detected.*

¹ Intensities estimated from amplitudes.

² Theoretical values of $\langle |L| \rangle$, $\langle L^2 \rangle$ for acentric reflections are 0.5, 0.375 respectively for untwinned datasets, and 0.333, 0.2 for perfectly twinned datasets.

5 Model quality

5.1 Standard geometry

Bond lengths and bond angles in the following residue types are not validated in this section: 1CY, ATR

The Z score for a bond length (or angle) is the number of standard deviations the observed value is removed from the expected value. A bond length (or angle) with $|Z| > 5$ is considered an outlier worth inspection. RMSZ is the root-mean-square of all Z scores of the bond lengths (or angles).

Mol	Chain	Bond lengths		Bond angles	
		RMSZ	$\# Z > 5$	RMSZ	$\# Z > 5$
1	A	0.41	0/1290	0.62	0/1752
1	B	0.40	0/1275	0.59	0/1732
All	All	0.41	0/2565	0.61	0/3484

There are no bond length outliers.

There are no bond angle outliers.

There are no chirality outliers.

There are no planarity outliers.

5.2 Too-close contacts

In the following table, the Non-H and H(model) columns list the number of non-hydrogen atoms and hydrogen atoms in the chain respectively. The H(added) column lists the number of hydrogen atoms added and optimized by MolProbity. The Clashes column lists the number of clashes within the asymmetric unit, whereas Symm-Clashes lists symmetry related clashes.

Mol	Chain	Non-H	H(model)	H(added)	Clashes	Symm-Clashes
1	A	1253	0	1230	31	0
1	B	1244	0	1223	18	1
2	A	17	0	14	0	0
2	B	17	0	14	0	0
3	A	31	0	11	0	0
3	B	31	0	11	0	0
4	A	205	0	0	18	2
4	B	225	0	0	10	3
All	All	3023	0	2503	49	3

The all-atom clashscore is defined as the number of clashes found per 1000 atoms (including hydrogen atoms). The all-atom clashscore for this structure is 10.

The worst 5 of 49 close contacts within the same asymmetric unit are listed below, sorted by their clash magnitude.

Atom-1	Atom-2	Interatomic distance (Å)	Clash overlap (Å)
1:A:67:ARG:NH2	4:A:410:HOH:O	2.12	0.82
1:A:138[A]:GLU:OE1	4:A:475:HOH:O	2.00	0.79
1:A:101:ALA:O	4:A:339:HOH:O	2.00	0.78
1:A:28:GLN:HB2	4:A:499:HOH:O	1.86	0.76
1:A:67:ARG:NH1	4:A:479:HOH:O	2.18	0.75

All (3) symmetry-related close contacts are listed below. The label for Atom-2 includes the symmetry operator and encoded unit-cell translations to be applied.

Atom-1	Atom-2	Interatomic distance (Å)	Clash overlap (Å)
4:A:373:HOH:O	4:B:376:HOH:O[2_546]	1.83	0.37
1:B:33:GLU:OE2	4:B:506:HOH:O[1_655]	2.14	0.06
4:A:427:HOH:O	4:B:438:HOH:O[2_546]	2.17	0.03

5.3 Torsion angles ⓘ

5.3.1 Protein backbone ⓘ

In the following table, the Percentiles column shows the percent Ramachandran outliers of the chain as a percentile score with respect to all X-ray entries followed by that with respect to entries of similar resolution.

The Analysed column shows the number of residues for which the backbone conformation was analysed, and the total number of residues.

Mol	Chain	Analysed	Favoured	Allowed	Outliers	Percentiles	
1	A	159/179 (89%)	156 (98%)	3 (2%)	0	100	100
1	B	157/179 (88%)	152 (97%)	4 (2%)	1 (1%)	30	22
All	All	316/358 (88%)	308 (98%)	7 (2%)	1 (0%)	46	41

All (1) Ramachandran outliers are listed below:

Mol	Chain	Res	Type
1	B	97	GLY

5.3.2 Protein sidechains [i](#)

In the following table, the Percentiles column shows the percent sidechain outliers of the chain as a percentile score with respect to all X-ray entries followed by that with respect to entries of similar resolution.

The Analysed column shows the number of residues for which the sidechain conformation was analysed, and the total number of residues.

Mol	Chain	Analysed	Rotameric	Outliers	Percentiles	
1	A	128/144 (89%)	121 (94%)	7 (6%)	27	21
1	B	127/144 (88%)	121 (95%)	6 (5%)	32	27
All	All	255/288 (88%)	242 (95%)	13 (5%)	29	23

5 of 13 residues with a non-rotameric sidechain are listed below:

Mol	Chain	Res	Type
1	A	104	LEU
1	A	117	ILE
1	B	74	SER
1	A	83	GLU
1	B	53	LYS

Some sidechains can be flipped to improve hydrogen bonding and reduce clashes. There are no such sidechains identified.

5.3.3 RNA [i](#)

There are no RNA molecules in this entry.

5.4 Non-standard residues in protein, DNA, RNA chains [i](#)

There are no non-standard protein/DNA/RNA residues in this entry.

5.5 Carbohydrates [i](#)

There are no carbohydrates in this entry.

5.6 Ligand geometry [i](#)

4 ligands are modelled in this entry.

In the following table, the Counts columns list the number of bonds (or angles) for which Mogul statistics could be retrieved, the number of bonds (or angles) that are observed in the model and the number of bonds (or angles) that are defined in the chemical component dictionary. The Link column lists molecule types, if any, to which the group is linked. The Z score for a bond length (or angle) is the number of standard deviations the observed value is removed from the expected value. A bond length (or angle) with $|Z| > 2$ is considered an outlier worth inspection. RMSZ is the root-mean-square of all Z scores of the bond lengths (or angles).

Mol	Type	Chain	Res	Link	Bond lengths			Bond angles		
					Counts	RMSZ	# $ Z > 2$	Counts	RMSZ	# $ Z > 2$
2	1CY	A	201	-	15,18,18	0.68	0	19,27,27	2.18	8 (42%)
3	ATR	A	202	-	26,33,33	1.21	3 (11%)	34,52,52	1.91	5 (14%)
2	1CY	B	201	-	15,18,18	0.77	1 (6%)	19,27,27	2.55	10 (52%)
3	ATR	B	202	-	26,33,33	1.12	3 (11%)	34,52,52	2.20	6 (17%)

In the following table, the Chirals column lists the number of chiral outliers, the number of chiral centers analysed, the number of these observed in the model and the number defined in the chemical component dictionary. Similar counts are reported in the Torsion and Rings columns. '-' means no outliers of that kind were identified.

Mol	Type	Chain	Res	Link	Chirals	Torsions	Rings
2	1CY	A	201	-	-	0/4/23/23	0/2/2/2
3	ATR	A	202	-	-	0/17/37/37	0/3/3/3
2	1CY	B	201	-	-	0/4/23/23	0/2/2/2
3	ATR	B	202	-	-	0/17/37/37	0/3/3/3

The worst 5 of 7 bond length outliers are listed below:

Mol	Chain	Res	Type	Atoms	Z	Observed(Å)	Ideal(Å)
2	B	201	1CY	C14-CL17	2.37	1.79	1.74
3	B	202	ATR	O4'-C1'	2.41	1.44	1.41
3	A	202	ATR	O4'-C1'	2.48	1.44	1.41
3	B	202	ATR	C5-C4	2.57	1.46	1.40
3	A	202	ATR	PB-O1B	3.06	1.61	1.51

The worst 5 of 29 bond angle outliers are listed below:

Mol	Chain	Res	Type	Atoms	Z	Observed(°)	Ideal(°)
3	B	202	ATR	N3-C2-N1	-9.33	121.75	128.89
3	A	202	ATR	N3-C2-N1	-7.65	123.03	128.89
2	B	201	1CY	C10-C6-N1	-4.25	100.75	107.73
2	A	201	1CY	N5-C4-N3	-4.01	120.80	124.24
3	A	202	ATR	C4-C5-N7	-3.92	105.87	109.48

There are no chirality outliers.

There are no torsion outliers.

There are no ring outliers.

No monomer is involved in short contacts.

5.7 Other polymers

There are no such residues in this entry.

5.8 Polymer linkage issues

There are no chain breaks in this entry.

6 Fit of model and data [i](#)

6.1 Protein, DNA and RNA chains [i](#)

In the following table, the column labelled ‘#RSRZ> 2’ contains the number (and percentage) of RSRZ outliers, followed by percent RSRZ outliers for the chain as percentile scores relative to all X-ray entries and entries of similar resolution. The OWAB column contains the minimum, median, 95th percentile and maximum values of the occupancy-weighted average B-factor per residue. The column labelled ‘Q< 0.9’ lists the number of (and percentage) of residues with an average occupancy less than 0.9.

Mol	Chain	Analysed	<RSRZ>	#RSRZ>2	OWAB(Å ²)	Q<0.9
1	A	159/179 (88%)	-0.27	0 100 100	6, 13, 25, 34	1 (0%)
1	B	159/179 (88%)	-0.37	0 100 100	7, 11, 24, 30	0
All	All	318/358 (88%)	-0.32	0 100 100	6, 12, 25, 34	1 (0%)

There are no RSRZ outliers to report.

6.2 Non-standard residues in protein, DNA, RNA chains [i](#)

There are no non-standard protein/DNA/RNA residues in this entry.

6.3 Carbohydrates [i](#)

There are no carbohydrates in this entry.

6.4 Ligands [i](#)

In the following table, the Atoms column lists the number of modelled atoms in the group and the number defined in the chemical component dictionary. LLDF column lists the quality of electron density of the group with respect to its neighbouring residues in protein, DNA or RNA chains. The B-factors column lists the minimum, median, 95th percentile and maximum values of B factors of atoms in the group. The column labelled ‘Q< 0.9’ lists the number of atoms with occupancy less than 0.9.

Mol	Type	Chain	Res	Atoms	RSCC	RSR	LLDF	B-factors(Å ²)	Q<0.9
2	1CY	B	201	17/17	0.93	0.14	1.65	5,8,11,19	0
2	1CY	A	201	17/17	0.92	0.14	1.33	5,10,13,18	0
3	ATR	A	202	31/31	0.96	0.09	-0.88	8,13,21,26	0
3	ATR	B	202	31/31	0.95	0.09	-1.01	8,12,18,21	0

6.5 Other polymers [i](#)

There are no such residues in this entry.