



# wwPDB X-ray Structure Validation Summary Report ⓘ

Feb 1, 2016 – 10:03 AM GMT

PDB ID : 3KPD  
Title : Crystal Structure of the CBS domain pair of protein MJ0100 in complex with 5 -methylthioadenosine and S-adenosyl-L-methionine.  
Authors : Lucas, M.; Oyenarte, I.; Garcia, I.G.; Arribas, E.A.; Encinar, J.A.; Kortazar, D.; Fernandez, J.A.; Mato, J.M.; Martinez-Chantar, M.L.; Martinez-Cruz, L.A.  
Deposited on : 2009-11-16  
Resolution : 2.91 Å(reported)

This is a wwPDB X-ray Structure Validation Summary Report for a publicly released PDB entry.  
We welcome your comments at [validation@mail.wwpdb.org](mailto:validation@mail.wwpdb.org)  
A user guide is available at  
<http://wwpdb.org/validation/2016/XrayValidationReportHelp>  
with specific help available everywhere you see the ⓘ symbol.

---

The following versions of software and data (see [references ⓘ](#)) were used in the production of this report:

MolProbity : 4.02b-467  
Mogul : 1.7 (RC4), CSD as536be (2015)  
Xtriage (Phenix) : 1.9-1692  
EDS : rb-20026688  
Percentile statistics : 20151230.v01 (using entries in the PDB archive December 30th 2015)  
Refmac : 5.8.0135  
CCP4 : 6.5.0  
Ideal geometry (proteins) : Engh & Huber (2001)  
Ideal geometry (DNA, RNA) : Parkinson et al. (1996)  
Validation Pipeline (wwPDB-VP) : trunk26865

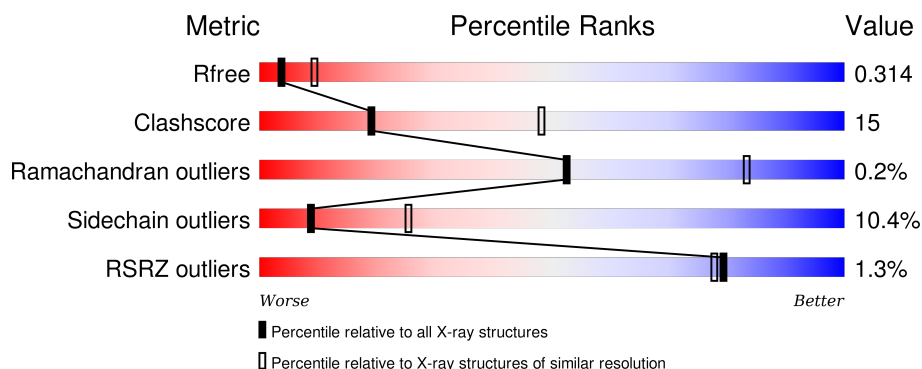
# 1 Overall quality at a glance ⓘ

The following experimental techniques were used to determine the structure:

## *X-RAY DIFFRACTION*

The reported resolution of this entry is 2.91 Å.

Percentile scores (ranging between 0-100) for global validation metrics of the entry are shown in the following graphic. The table shows the number of entries on which the scores are based.



Metric	Whole archive (#Entries)	Similar resolution (#Entries, resolution range(Å))
$R_{free}$	91344	1643 (2.94-2.90)
Clashscore	102246	1871 (2.94-2.90)
Ramachandran outliers	100387	1824 (2.94-2.90)
Sidechain outliers	100360	1826 (2.94-2.90)
RSRZ outliers	91569	1650 (2.94-2.90)

The table below summarises the geometric issues observed across the polymeric chains and their fit to the electron density. The red, orange, yellow and green segments on the lower bar indicate the fraction of residues that contain outliers for  $\geq 3$ , 2, 1 and 0 types of geometric quality criteria. A grey segment represents the fraction of residues that are not modelled. The numeric value for each fraction is indicated below the corresponding segment, with a dot representing fractions  $\leq 5\%$ . The upper red bar (where present) indicates the fraction of residues that have poor fit to the electron density. The numeric value is given above the bar.

Mol	Chain	Length	Quality of chain
1	A	122	<div> <div>2%</div> <div>68%</div> <div>27%</div> <div>• •</div> </div>
1	B	122	<div> <div>%</div> <div>61%</div> <div>34%</div> <div>5% •</div> </div>
1	C	122	<div> <div>61%</div> <div>31%</div> <div>5% •</div> </div>
1	D	122	<div> <div>2%</div> <div>60%</div> <div>35%</div> <div>• •</div> </div>

## 2 Entry composition [i](#)

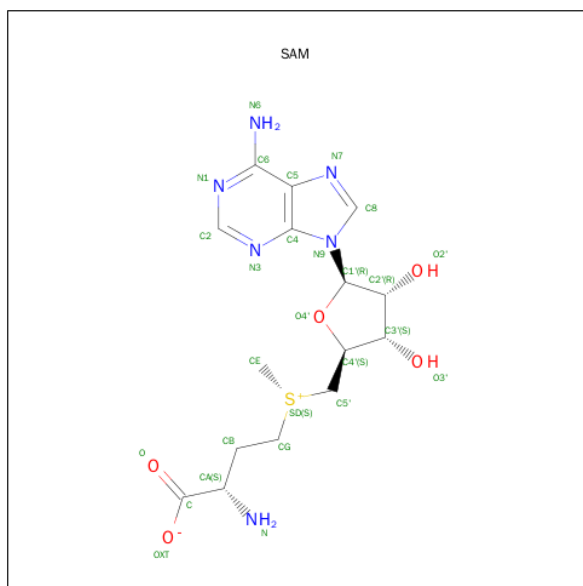
There are 3 unique types of molecules in this entry. The entry contains 3887 atoms, of which 0 are hydrogens and 0 are deuteriums.

In the tables below, the ZeroOcc column contains the number of atoms modelled with zero occupancy, the AltConf column contains the number of residues with at least one atom in alternate conformation and the Trace column contains the number of residues modelled with at most 2 atoms.

- Molecule 1 is a protein called Uncharacterized protein MJ0100.

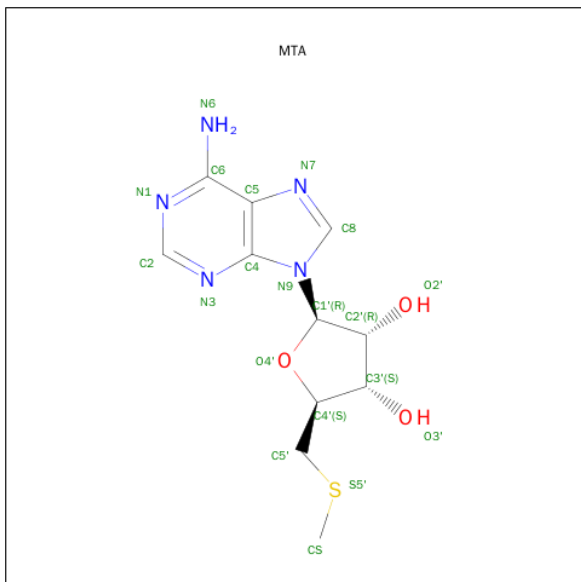
Mol	Chain	Residues	Atoms					ZeroOcc	AltConf	Trace
1	A	119	Total	C	N	O	S	0	1	0
			930	592	161	174	3			
1	B	121	Total	C	N	O	S	0	1	0
			943	600	164	176	3			
1	C	119	Total	C	N	O	S	0	1	0
			930	592	161	174	3			
1	D	119	Total	C	N	O	S	0	1	0
			930	592	161	174	3			

- Molecule 2 is S-ADENOSYLMETHIONINE (three-letter code: SAM) (formula: C<sub>15</sub>H<sub>22</sub>N<sub>6</sub>O<sub>5</sub>S).



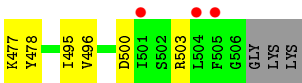
Mol	Chain	Residues	Atoms					ZeroOcc	AltConf
2	B	1	Total	C	N	O	S	0	0
			27	15	6	5	1		
2	C	1	Total	C	N	O	S	0	0
			27	15	6	5	1		

- Molecule 3 is 5'-DEOXY-5'-METHYLTHIOADENOSINE (three-letter code: MTA) (formula:  $C_{11}H_{15}N_5O_3S$ ).



Mol	Chain	Residues	Atoms					ZeroOcc	AltConf
3	A	1	Total	C	N	O	S	0	0
			20	11	5	3	1		
3	A	1	Total	C	N	O	S	0	0
			20	11	5	3	1		
3	C	1	Total	C	N	O	S	0	0
			20	11	5	3	1		
3	D	1	Total	C	N	O	S	0	0
			20	11	5	3	1		
3	D	1	Total	C	N	O	S	0	0
			20	11	5	3	1		





## 4 Data and refinement statistics

Property	Value	Source
Space group	C 2 2 21	Depositor
Cell constants a, b, c, $\alpha$ , $\beta$ , $\gamma$	58.67Å 165.79Å 123.00Å 90.00° 90.00° 90.00°	Depositor
Resolution (Å)	(Not available) – 2.91 40.23 – 2.91	Depositor EDS
% Data completeness (in resolution range)	99.6 ((Not available)-2.91) 99.6 (40.23-2.91)	Depositor EDS
$R_{merge}$	(Not available)	Depositor
$R_{sym}$	(Not available)	Depositor
$\langle I/\sigma(I) \rangle$ <sup>1</sup>	5.52 (at 2.90Å)	Xtriage
Refinement program	REFMAC 5.5.0072	Depositor
R, $R_{free}$	0.234 , 0.334 0.220 , 0.314	Depositor DCC
$R_{free}$ test set	670 reflections (5.22%)	DCC
Wilson B-factor (Å <sup>2</sup> )	69.5	Xtriage
Anisotropy	0.068	Xtriage
Bulk solvent $k_{sol}$ (e/Å <sup>3</sup> ), $B_{sol}$ (Å <sup>2</sup> )	0.26 , 19.9	EDS
Estimated twinning fraction	No twinning to report.	Xtriage
L-test for twinning <sup>2</sup>	$\langle  L  \rangle = 0.49$ , $\langle L^2 \rangle = 0.32$	Xtriage
Outliers	0 of 13516 reflections	Xtriage
$F_o, F_c$ correlation	0.93	EDS
Total number of atoms	3887	wwPDB-VP
Average B, all atoms (Å <sup>2</sup> )	58.0	wwPDB-VP

Xtriage's analysis on translational NCS is as follows: *The largest off-origin peak in the Patterson function is 8.13% of the height of the origin peak. No significant pseudotranslation is detected.*

<sup>1</sup> Intensities estimated from amplitudes.

<sup>2</sup> Theoretical values of  $\langle |L| \rangle$ ,  $\langle L^2 \rangle$  for acentric reflections are 0.5, 0.375 respectively for untwinned datasets, and 0.333, 0.2 for perfectly twinned datasets.

## 5 Model quality

### 5.1 Standard geometry

Bond lengths and bond angles in the following residue types are not validated in this section: MTA, SAM

The Z score for a bond length (or angle) is the number of standard deviations the observed value is removed from the expected value. A bond length (or angle) with  $|Z| > 5$  is considered an outlier worth inspection. RMSZ is the root-mean-square of all Z scores of the bond lengths (or angles).

Mol	Chain	Bond lengths		Bond angles	
		RMSZ	$\# Z  > 5$	RMSZ	$\# Z  > 5$
1	A	0.54	0/948	0.74	0/1286
1	B	0.58	0/961	0.69	0/1302
1	C	0.58	0/948	0.72	1/1286 (0.1%)
1	D	0.58	0/948	0.76	0/1286
All	All	0.57	0/3805	0.73	1/5160 (0.0%)

Chiral center outliers are detected by calculating the chiral volume of a chiral center and verifying if the center is modelled as a planar moiety or with the opposite hand. A planarity outlier is detected by checking planarity of atoms in a peptide group, atoms in a mainchain group or atoms of a sidechain that are expected to be planar.

Mol	Chain	#Chirality outliers	#Planarity outliers
1	A	0	1

There are no bond length outliers.

All (1) bond angle outliers are listed below:

Mol	Chain	Res	Type	Atoms	Z	Observed(°)	Ideal(°)
1	C	414	LEU	CB-CG-CD1	-5.09	102.35	111.00

There are no chirality outliers.

All (1) planarity outliers are listed below:

Mol	Chain	Res	Type	Group
1	A	395	SER	Peptide



## 5.2 Too-close contacts ⓘ

In the following table, the Non-H and H(model) columns list the number of non-hydrogen atoms and hydrogen atoms in the chain respectively. The H(added) column lists the number of hydrogen atoms added and optimized by MolProbity. The Clashes column lists the number of clashes within the asymmetric unit, whereas Symm-Clashes lists symmetry related clashes.

Mol	Chain	Non-H	H(model)	H(added)	Clashes	Symm-Clashes
1	A	930	0	972	22	0
1	B	943	0	988	43	0
1	C	930	0	972	41	0
1	D	930	0	972	34	0
2	B	27	0	22	3	0
2	C	27	0	22	1	0
3	A	40	0	30	0	0
3	C	20	0	15	6	0
3	D	40	0	30	2	0
All	All	3887	0	4023	120	0

The all-atom clashscore is defined as the number of clashes found per 1000 atoms (including hydrogen atoms). The all-atom clashscore for this structure is 15.

The worst 5 of 120 close contacts within the same asymmetric unit are listed below, sorted by their clash magnitude.

Atom-1	Atom-2	Interatomic distance (Å)	Clash overlap (Å)
1:C:396:LYS:HB2	1:C:397:PRO:HD3	1.45	0.94
1:D:396:LYS:HB3	1:D:397:PRO:HD2	1.55	0.85
1:D:448:LYS:HB2	1:D:454:ILE:HD11	1.60	0.83
1:C:404:ASN:HD22	1:C:404:ASN:H	1.26	0.82
1:B:438:TRP:CH2	1:C:415:ILE:HA	2.15	0.81

There are no symmetry-related clashes.

## 5.3 Torsion angles ⓘ

### 5.3.1 Protein backbone ⓘ

In the following table, the Percentiles column shows the percent Ramachandran outliers of the chain as a percentile score with respect to all X-ray entries followed by that with respect to entries of similar resolution.

The Analysed column shows the number of residues for which the backbone conformation was analysed, and the total number of residues.

Mol	Chain	Analysed	Favoured	Allowed	Outliers	Percentiles	
1	A	118/122 (97%)	104 (88%)	14 (12%)	0	100	100
1	B	120/122 (98%)	114 (95%)	6 (5%)	0	100	100
1	C	118/122 (97%)	105 (89%)	13 (11%)	0	100	100
1	D	118/122 (97%)	106 (90%)	11 (9%)	1 (1%)	24	58
All	All	474/488 (97%)	429 (90%)	44 (9%)	1 (0%)	52	83

All (1) Ramachandran outliers are listed below:

Mol	Chain	Res	Type
1	D	397	PRO

### 5.3.2 Protein sidechains ⓘ

In the following table, the Percentiles column shows the percent sidechain outliers of the chain as a percentile score with respect to all X-ray entries followed by that with respect to entries of similar resolution.

The Analysed column shows the number of residues for which the sidechain conformation was analysed, and the total number of residues.

Mol	Chain	Analysed	Rotameric	Outliers	Percentiles	
1	A	107/108 (99%)	98 (92%)	9 (8%)	14	37
1	B	108/108 (100%)	95 (88%)	13 (12%)	6	18
1	C	107/108 (99%)	94 (88%)	13 (12%)	6	18
1	D	107/108 (99%)	97 (91%)	10 (9%)	11	32
All	All	429/432 (99%)	384 (90%)	45 (10%)	9	25

5 of 45 residues with a non-rotameric sidechain are listed below:

Mol	Chain	Res	Type
1	B	469	ASP
1	C	428	HIS
1	D	449	LYS
1	C	394	LEU
1	C	438	TRP

Some sidechains can be flipped to improve hydrogen bonding and reduce clashes. 5 of 8 such sidechains are listed below:

Mol	Chain	Res	Type
1	B	428	HIS
1	C	470	HIS
1	B	463	HIS
1	B	417	HIS
1	B	446	GLN

### 5.3.3 RNA [i](#)

There are no RNA molecules in this entry.

### 5.4 Non-standard residues in protein, DNA, RNA chains [i](#)

There are no non-standard protein/DNA/RNA residues in this entry.

### 5.5 Carbohydrates [i](#)

There are no carbohydrates in this entry.

### 5.6 Ligand geometry [i](#)

7 ligands are modelled in this entry.

In the following table, the Counts columns list the number of bonds (or angles) for which Mogul statistics could be retrieved, the number of bonds (or angles) that are observed in the model and the number of bonds (or angles) that are defined in the chemical component dictionary. The Link column lists molecule types, if any, to which the group is linked. The Z score for a bond length (or angle) is the number of standard deviations the observed value is removed from the expected value. A bond length (or angle) with  $|Z| > 2$  is considered an outlier worth inspection. RMSZ is the root-mean-square of all Z scores of the bond lengths (or angles).

Mol	Type	Chain	Res	Link	Bond lengths			Bond angles		
					Counts	RMSZ	# Z  > 2	Counts	RMSZ	# Z  > 2
3	MTA	A	1	-	17,22,22	1.29	2 (11%)	17,32,32	2.37	5 (29%)
3	MTA	A	2	-	17,22,22	1.38	2 (11%)	17,32,32	2.64	7 (41%)
2	SAM	B	1000	-	21,29,29	1.19	2 (9%)	17,42,42	2.71	4 (23%)
3	MTA	C	1	-	17,22,22	1.32	3 (17%)	17,32,32	2.91	3 (17%)
2	SAM	C	1000	-	21,29,29	1.26	2 (9%)	17,42,42	2.69	1 (5%)
3	MTA	D	1	-	17,22,22	1.38	2 (11%)	17,32,32	2.74	5 (29%)
3	MTA	D	2	-	17,22,22	0.99	1 (5%)	17,32,32	2.82	5 (29%)

In the following table, the Chirals column lists the number of chiral outliers, the number of chiral centers analysed, the number of these observed in the model and the number defined in the chemical component dictionary. Similar counts are reported in the Torsion and Rings columns. '-' means no outliers of that kind were identified.

Mol	Type	Chain	Res	Link	Chirals	Torsions	Rings
3	MTA	A	1	-	-	0/3/23/23	0/3/3/3
3	MTA	A	2	-	-	0/3/23/23	0/3/3/3
2	SAM	B	1000	-	-	0/8/33/33	0/3/3/3
3	MTA	C	1	-	-	0/3/23/23	0/3/3/3
2	SAM	C	1000	-	-	0/8/33/33	0/3/3/3
3	MTA	D	1	-	-	0/3/23/23	0/3/3/3
3	MTA	D	2	-	-	0/3/23/23	0/3/3/3

The worst 5 of 14 bond length outliers are listed below:

Mol	Chain	Res	Type	Atoms	Z	Observed(Å)	Ideal(Å)
3	A	2	MTA	C5'-S5'	-3.96	1.76	1.80
3	D	1	MTA	C5'-S5'	-3.11	1.77	1.80
3	A	1	MTA	C5'-S5'	-2.72	1.77	1.80
3	C	1	MTA	C5'-S5'	-2.23	1.78	1.80
2	B	1000	SAM	C2-N1	2.33	1.38	1.33

The worst 5 of 30 bond angle outliers are listed below:

Mol	Chain	Res	Type	Atoms	Z	Observed(°)	Ideal(°)
2	C	1000	SAM	N3-C2-N1	-10.62	120.77	128.89
2	B	1000	SAM	N3-C2-N1	-9.99	121.24	128.89
3	D	1	MTA	N3-C2-N1	-7.94	122.82	128.89
3	D	2	MTA	N3-C2-N1	-7.88	122.86	128.89
3	C	1	MTA	N3-C2-N1	-7.29	123.31	128.89

There are no chirality outliers.

There are no torsion outliers.

There are no ring outliers.

4 monomers are involved in 12 short contacts:

Mol	Chain	Res	Type	Clashes	Symm-Clashes
2	B	1000	SAM	3	0
3	C	1	MTA	6	0
2	C	1000	SAM	1	0
3	D	1	MTA	2	0

## 5.7 Other polymers [i](#)

There are no such residues in this entry.

## 5.8 Polymer linkage issues [i](#)

There are no chain breaks in this entry.

## 6 Fit of model and data [i](#)

### 6.1 Protein, DNA and RNA chains [i](#)

In the following table, the column labelled ‘#RSRZ> 2’ contains the number (and percentage) of RSRZ outliers, followed by percent RSRZ outliers for the chain as percentile scores relative to all X-ray entries and entries of similar resolution. The OWAB column contains the minimum, median, 95<sup>th</sup> percentile and maximum values of the occupancy-weighted average B-factor per residue. The column labelled ‘Q< 0.9’ lists the number of (and percentage) of residues with an average occupancy less than 0.9.

Mol	Chain	Analysed	<RSRZ>	#RSRZ>2	OWAB(Å <sup>2</sup> )	Q<0.9
1	A	119/122 (97%)	-0.30	2 (1%) 73 70	47, 64, 79, 88	0
1	B	121/122 (99%)	-0.52	1 (0%) 87 86	37, 48, 72, 85	0
1	C	119/122 (97%)	-0.45	0 100 100	40, 55, 74, 78	0
1	D	119/122 (97%)	-0.22	3 (2%) 61 56	40, 57, 89, 106	0
All	All	478/488 (97%)	-0.37	6 (1%) 79 78	37, 57, 82, 106	0

The worst 5 of 6 RSRZ outliers are listed below:

Mol	Chain	Res	Type	RSRZ
1	D	504	LEU	5.1
1	D	505	PHE	4.1
1	A	506	GLY	3.8
1	A	505	PHE	3.2
1	B	395	SER	2.3

### 6.2 Non-standard residues in protein, DNA, RNA chains [i](#)

There are no non-standard protein/DNA/RNA residues in this entry.

### 6.3 Carbohydrates [i](#)

There are no carbohydrates in this entry.

### 6.4 Ligands [i](#)

In the following table, the Atoms column lists the number of modelled atoms in the group and the number defined in the chemical component dictionary. LLDF column lists the quality of electron density of the group with respect to its neighbouring residues in protein, DNA or RNA chains. The B-factors column lists the minimum, median, 95<sup>th</sup> percentile and maximum values of B factors

of atoms in the group. The column labelled 'Q< 0.9' lists the number of atoms with occupancy less than 0.9.

Mol	Type	Chain	Res	Atoms	RSCC	RSR	LLDF	B-factors( $\text{\AA}^2$ )	Q<0.9
3	MTA	D	1	20/20	0.90	0.25	0.80	75,80,92,94	0
2	SAM	B	1000	27/27	0.94	0.20	0.78	42,52,75,75	0
3	MTA	C	1	20/20	0.89	0.18	0.61	58,63,73,76	0
3	MTA	D	2	20/20	0.91	0.17	-0.27	54,56,70,71	0
2	SAM	C	1000	27/27	0.96	0.16	-0.27	42,44,51,51	0
3	MTA	A	1	20/20	0.95	0.14	-0.83	41,45,64,64	0
3	MTA	A	2	20/20	0.96	0.15	-1.01	58,61,74,76	0

## 6.5 Other polymers [i](#)

There are no such residues in this entry.