



Full wwPDB X-ray Structure Validation Report ⓘ

Feb 1, 2016 – 06:11 PM GMT

PDB ID : 4KU1
Title : Role of the hinge and C-gamma-2/C-gamma-3 interface in immunoglobulin G1
Fc domain motions: implications for Fc engineering
Authors : Frank, M.; Walker, R.; Lanzilotta, W.N.; Prestegard, J.H.; Barb, A.W.
Deposited on : 2013-05-21
Resolution : 1.90 Å(reported)

This is a Full wwPDB X-ray Structure Validation Report for a publicly released PDB entry.
We welcome your comments at validation@mail.wwpdb.org
A user guide is available at
<http://wwpdb.org/validation/2016/XrayValidationReportHelp>
with specific help available everywhere you see the ⓘ symbol.

The following versions of software and data (see [references ⓘ](#)) were used in the production of this report:

MolProbity : 4.02b-467
Mogul : 1.7 (RC4), CSD as536be (2015)
Xtriage (Phenix) : 1.9-1692
EDS : rb-20026688
Percentile statistics : 20151230.v01 (using entries in the PDB archive December 30th 2015)
Refmac : 5.8.0135
CCP4 : 6.5.0
Ideal geometry (proteins) : Engh & Huber (2001)
Ideal geometry (DNA, RNA) : Parkinson et al. (1996)
Validation Pipeline (wwPDB-VP) : trunk26865

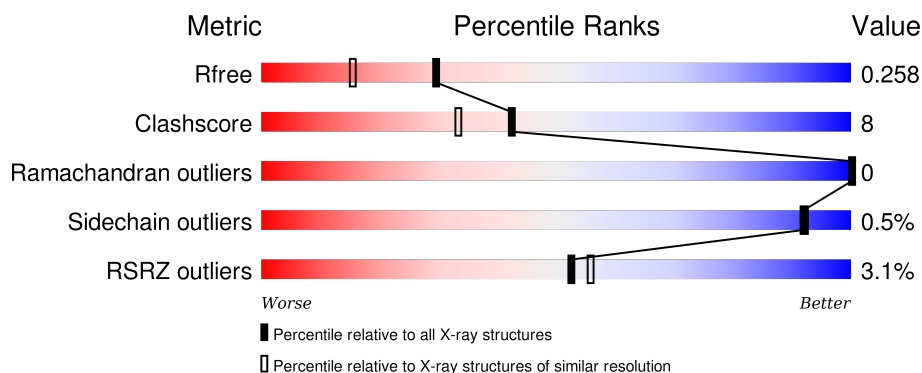
1 Overall quality at a glance

The following experimental techniques were used to determine the structure:

X-RAY DIFFRACTION

The reported resolution of this entry is 1.90 Å.

Percentile scores (ranging between 0-100) for global validation metrics of the entry are shown in the following graphic. The table shows the number of entries on which the scores are based.



Metric	Whole archive (#Entries)	Similar resolution (#Entries, resolution range(Å))
R_{free}	91344	4755 (1.90-1.90)
Clashscore	102246	5398 (1.90-1.90)
Ramachandran outliers	100387	5338 (1.90-1.90)
Sidechain outliers	100360	5339 (1.90-1.90)
RSRZ outliers	91569	4766 (1.90-1.90)

The table below summarises the geometric issues observed across the polymeric chains and their fit to the electron density. The red, orange, yellow and green segments on the lower bar indicate the fraction of residues that contain outliers for ≥ 3 , 2, 1 and 0 types of geometric quality criteria. A grey segment represents the fraction of residues that are not modelled. The numeric value for each fraction is indicated below the corresponding segment, with a dot representing fractions $\leq 5\%$. The upper red bar (where present) indicates the fraction of residues that have poor fit to the electron density. The numeric value is given above the bar.

Mol	Chain	Length	Quality of chain
1	A	208	<div> <div>6%</div> <div>79%</div> <div>20%</div> </div>
1	B	208	<div> <div>86%</div> <div>14%</div> </div>

The following table lists non-polymeric compounds, carbohydrate monomers and non-standard residues in protein, DNA, RNA chains that are outliers for geometric or electron-density-fit criteria:

Mol	Type	Chain	Res	Chirality	Geometry	Clashes	Electron density
3	PG4	A	511	-	-	-	X

2 Entry composition [i](#)

There are 5 unique types of molecules in this entry. The entry contains 3750 atoms, of which 0 are hydrogens and 0 are deuteriums.

In the tables below, the ZeroOcc column contains the number of atoms modelled with zero occupancy, the AltConf column contains the number of residues with at least one atom in alternate conformation and the Trace column contains the number of residues modelled with at most 2 atoms.

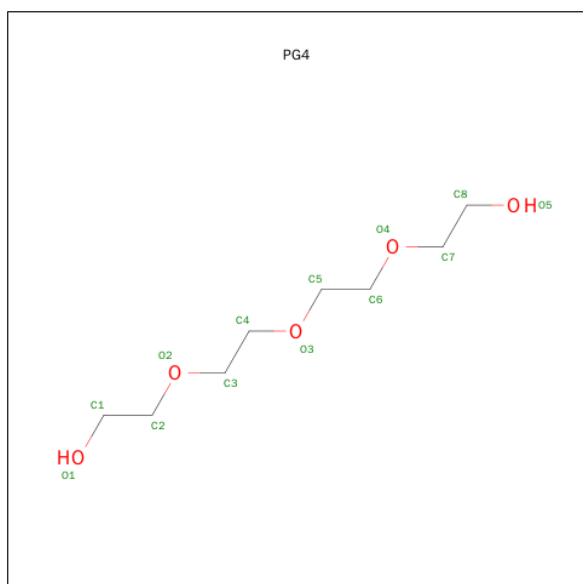
- Molecule 1 is a protein called Ig gamma-1 chain C region.

Mol	Chain	Residues	Atoms					ZeroOcc	AltConf	Trace
1	A	207	Total	C	N	O	S	0	2	0
			1672	1065	282	319	6			
1	B	208	Total	C	N	O	S	0	4	0
			1686	1073	283	324	6			

- Molecule 2 is a polymer of unknown type called SUGAR (10-MER).

Mol	Chain	Residues	Atoms				ZeroOcc	AltConf
2	A	10	Total	C	N	O	0	0
			121	68	4	49		

- Molecule 3 is TETRAETHYLENE GLYCOL (three-letter code: PG4) (formula: C₈H₁₈O₅).



Mol	Chain	Residues	Atoms			ZeroOcc	AltConf
3	A	1	Total	C	O	0	0
			13	8	5		

- Molecule 4 is a polymer of unknown type called SUGAR (9-MER).

Mol	Chain	Residues	Atoms				ZeroOcc	AltConf
4	B	9	Total	C	N	O	0	0
			110	62	4	44		

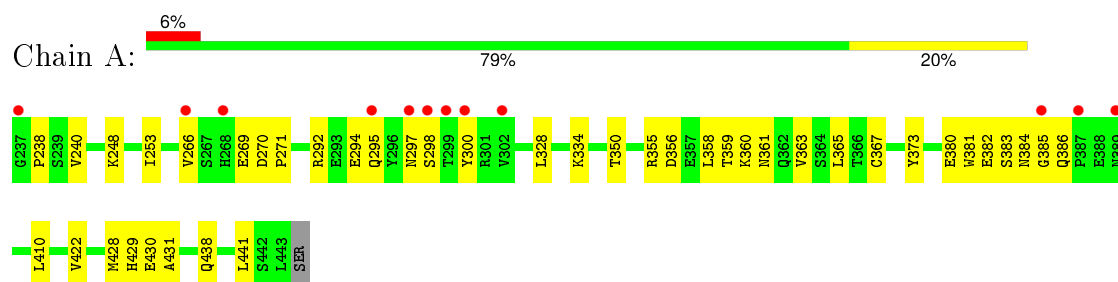
- Molecule 5 is water.

Mol	Chain	Residues	Atoms		ZeroOcc	AltConf
5	A	66	Total	O	0	0
			66	66		
5	B	82	Total	O	0	0
			82	82		

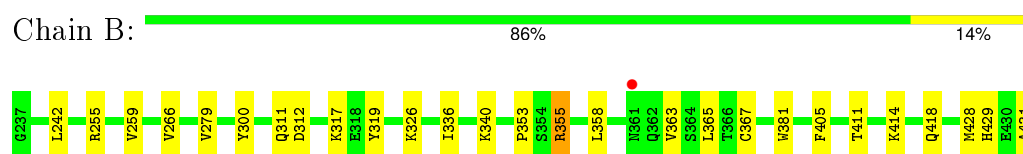
3 Residue-property plots [i](#)

These plots are drawn for all protein, RNA and DNA chains in the entry. The first graphic for a chain summarises the proportions of errors displayed in the second graphic. The second graphic shows the sequence view annotated by issues in geometry and electron density. Residues are color-coded according to the number of geometric quality criteria for which they contain at least one outlier: green = 0, yellow = 1, orange = 2 and red = 3 or more. A red dot above a residue indicates a poor fit to the electron density ($\text{RSRZ} > 2$). Stretches of 2 or more consecutive residues without any outlier are shown as a green connector. Residues present in the sample, but not in the model, are shown in grey.

- Molecule 1: Ig gamma-1 chain C region



- Molecule 1: Ig gamma-1 chain C region



4 Data and refinement statistics

Property	Value	Source
Space group	P 21 21 21	Depositor
Cell constants a, b, c, α , β , γ	49.15Å 79.86Å 128.40Å 90.00° 90.00° 90.00°	Depositor
Resolution (Å)	50.00 – 1.90 39.93 – 1.90	Depositor EDS
% Data completeness (in resolution range)	98.3 (50.00-1.90) 98.3 (39.93-1.90)	Depositor EDS
R_{merge}	(Not available)	Depositor
R_{sym}	(Not available)	Depositor
$\langle I/\sigma(I) \rangle$ ¹	2.55 (at 1.91Å)	Xtriage
Refinement program	REFMAC 5.5.0102	Depositor
R, R_{free}	0.212 , 0.258 0.214 , 0.258	Depositor DCC
R_{free} test set	1991 reflections (5.26%)	DCC
Wilson B-factor (Å ²)	27.1	Xtriage
Anisotropy	0.195	Xtriage
Bulk solvent k_{sol} (e/Å ³), B_{sol} (Å ²)	0.34 , 41.1	EDS
Estimated twinning fraction	No twinning to report.	Xtriage
L-test for twinning ²	$\langle L \rangle = 0.49$, $\langle L^2 \rangle = 0.32$	Xtriage
Outliers	1 of 39839 reflections (0.003%)	Xtriage
F_o, F_c correlation	0.94	EDS
Total number of atoms	3750	wwPDB-VP
Average B, all atoms (Å ²)	31.0	wwPDB-VP

Xtriage's analysis on translational NCS is as follows: *The largest off-origin peak in the Patterson function is 7.13% of the height of the origin peak. No significant pseudotranslation is detected.*

¹Intensities estimated from amplitudes.

²Theoretical values of $\langle |L| \rangle$, $\langle L^2 \rangle$ for acentric reflections are 0.5, 0.375 respectively for untwinned datasets, and 0.333, 0.2 for perfectly twinned datasets.

5 Model quality

5.1 Standard geometry

Bond lengths and bond angles in the following residue types are not validated in this section: BMA, NAG, PG4, GAL, FUL, MAN

The Z score for a bond length (or angle) is the number of standard deviations the observed value is removed from the expected value. A bond length (or angle) with $|Z| > 5$ is considered an outlier worth inspection. RMSZ is the root-mean-square of all Z scores of the bond lengths (or angles).

Mol	Chain	Bond lengths		Bond angles	
		RMSZ	$\# Z > 5$	RMSZ	$\# Z > 5$
1	A	1.08	1/1721 (0.1%)	0.86	1/2344 (0.0%)
1	B	1.21	4/1741 (0.2%)	0.99	0/2372
All	All	1.14	5/3462 (0.1%)	0.93	1/4716 (0.0%)

Chiral center outliers are detected by calculating the chiral volume of a chiral center and verifying if the center is modelled as a planar moiety or with the opposite hand. A planarity outlier is detected by checking planarity of atoms in a peptide group, atoms in a mainchain group or atoms of a sidechain that are expected to be planar.

Mol	Chain	#Chirality outliers	#Planarity outliers
1	A	0	1

All (5) bond length outliers are listed below:

Mol	Chain	Res	Type	Atoms	Z	Observed(Å)	Ideal(Å)
1	B	405	PHE	CE1-CZ	6.82	1.50	1.37
1	B	319	TYR	CD1-CE1	5.86	1.48	1.39
1	B	319	TYR	CD2-CE2	5.73	1.48	1.39
1	A	373	TYR	CD1-CE1	5.34	1.47	1.39
1	B	405	PHE	CE2-CZ	5.09	1.47	1.37

All (1) bond angle outliers are listed below:

Mol	Chain	Res	Type	Atoms	Z	Observed(°)	Ideal(°)
1	A	438	GLN	CB-CA-C	-5.42	99.56	110.40

There are no chirality outliers.

All (1) planarity outliers are listed below:

Mol	Chain	Res	Type	Group
1	A	430	GLU	Mainchain

5.2 Too-close contacts

In the following table, the Non-H and H(model) columns list the number of non-hydrogen atoms and hydrogen atoms in the chain respectively. The H(added) column lists the number of hydrogen atoms added and optimized by MolProbity. The Clashes column lists the number of clashes within the asymmetric unit, whereas Symm-Clashes lists symmetry related clashes.

Mol	Chain	Non-H	H(model)	H(added)	Clashes	Symm-Clashes
1	A	1672	0	1644	33	0
1	B	1686	0	1656	20	0
2	A	121	0	101	8	0
3	A	13	0	18	0	0
4	B	110	0	94	0	0
5	A	66	0	0	1	0
5	B	82	0	0	6	0
All	All	3750	0	3513	57	0

The all-atom clashscore is defined as the number of clashes found per 1000 atoms (including hydrogen atoms). The all-atom clashscore for this structure is 8.

All (57) close contacts within the same asymmetric unit are listed below, sorted by their clash magnitude.

Atom-1	Atom-2	Interatomic distance (Å)	Clash overlap (Å)
1:A:297:ASN:HD21	2:A:501:NAG:C1	1.16	1.57
1:A:294:GLU:OE2	1:A:300:TYR:HE1	1.27	1.17
1:A:294:GLU:OE2	1:A:300:TYR:CE1	2.08	1.03
1:A:297:ASN:O	1:A:298:SER:HB2	1.69	0.92
1:A:297:ASN:HD21	2:A:501:NAG:C2	1.83	0.90
1:B:411[A]:THR:HG22	5:B:601:HOH:O	1.72	0.89
1:B:411[A]:THR:CG2	5:B:601:HOH:O	2.21	0.88
1:A:380:GLU:OE1	5:A:665:HOH:O	1.92	0.87
2:A:504:MAN:C2	2:A:505:NAG:C1	2.53	0.86
1:A:429:HIS:HD2	1:A:431:ALA:H	1.29	0.77
1:B:429:HIS:HD2	1:B:431:ALA:H	1.30	0.77
1:A:429:HIS:CD2	1:A:431:ALA:H	2.05	0.75
1:B:429:HIS:CD2	1:B:431:ALA:H	2.04	0.74
1:A:294:GLU:CD	1:A:300:TYR:HE1	1.96	0.66
1:A:385:GLY:O	1:A:386:GLN:NE2	2.30	0.63
1:A:383:SER:OG	1:A:422:VAL:O	2.10	0.62

Continued on next page...

Continued from previous page...

Atom-1	Atom-2	Interatomic distance (Å)	Clash overlap (Å)
1:A:253:ILE:HD12	1:A:253:ILE:H	1.66	0.61
1:A:365:LEU:HD12	1:A:410:LEU:HD23	1.83	0.61
2:A:509:NAG:H62	2:A:510:GAL:C1	2.33	0.58
1:B:259:VAL:HG13	1:B:336:ILE:HD11	1.87	0.56
1:B:358:LEU:HD23	1:B:363:VAL:HG11	1.88	0.55
1:A:269:GLU:HG3	1:A:270:ASP:OD2	2.06	0.54
1:A:355:ARG:HA	1:A:358:LEU:HD12	1.89	0.54
2:A:504:MAN:O2	2:A:505:NAG:C2	2.51	0.53
1:A:297:ASN:CG	2:A:501:NAG:C1	2.76	0.51
1:A:294:GLU:CD	1:A:300:TYR:CE1	2.78	0.51
1:A:266:VAL:HB	1:A:300:TYR:HB2	1.95	0.49
1:B:266:VAL:HB	1:B:300:TYR:HB2	1.95	0.48
1:B:311:GLN:NE2	5:B:634:HOH:O	2.22	0.48
1:A:248:LYS:HE3	1:A:428:MET:CE	2.44	0.48
1:A:384:ASN:O	1:A:386:GLN:HG2	2.13	0.48
1:B:340:LYS:HA	5:B:629:HOH:O	2.14	0.47
1:A:350:THR:HB	1:A:441:LEU:HB2	1.96	0.47
1:A:297:ASN:O	1:A:298:SER:CB	2.47	0.47
1:B:353:PRO:HD3	1:B:365:LEU:CD2	2.44	0.47
1:A:238:PRO:HD2	1:A:328:LEU:HD21	1.96	0.46
1:B:242:LEU:HD23	1:B:336:ILE:HG23	1.97	0.46
1:B:414:LYS:O	1:B:418[B]:GLN:HG3	2.15	0.46
1:A:294:GLU:OE2	1:A:300:TYR:CD1	2.66	0.46
1:B:443:LEU:HD23	1:B:444:SER:HB3	1.98	0.45
1:A:382:GLU:HB3	1:A:386:GLN:O	2.16	0.45
1:A:367:CYS:HB2	1:A:381:TRP:CZ2	2.52	0.44
1:B:428:MET:HA	1:B:435:HIS:O	2.18	0.44
2:A:504:MAN:H2	2:A:505:NAG:C1	2.42	0.43
1:A:358:LEU:HD23	1:A:363:VAL:HG11	1.99	0.43
1:B:279:VAL:CG1	1:B:317:LYS:HD2	2.49	0.43
1:B:312:ASP:CG	1:B:317:LYS:HE2	2.39	0.42
1:B:355:ARG:H	1:B:355:ARG:HG2	1.31	0.42
1:A:359:THR:HG23	1:A:360:LYS:HD3	2.02	0.42
1:A:240:VAL:O	1:A:334:LYS:HE2	2.19	0.42
1:B:367:CYS:HB2	1:B:381:TRP:CZ2	2.55	0.41
1:A:356:ASP:O	1:A:359:THR:HG22	2.19	0.41
1:B:255:ARG:HD2	5:B:665:HOH:O	2.20	0.41
1:B:326:LYS:HG3	5:B:609:HOH:O	2.21	0.41
1:A:271:PRO:HB2	1:A:292:ARG:HH11	1.86	0.40
1:A:297:ASN:ND2	2:A:501:NAG:C2	2.62	0.40

There are no symmetry-related clashes.

5.3 Torsion angles

5.3.1 Protein backbone

In the following table, the Percentiles column shows the percent Ramachandran outliers of the chain as a percentile score with respect to all X-ray entries followed by that with respect to entries of similar resolution.

The Analysed column shows the number of residues for which the backbone conformation was analysed, and the total number of residues.

Mol	Chain	Analysed	Favoured	Allowed	Outliers	Percentiles	
1	A	207/208 (100%)	203 (98%)	4 (2%)	0	100	100
1	B	210/208 (101%)	208 (99%)	2 (1%)	0	100	100
All	All	417/416 (100%)	411 (99%)	6 (1%)	0	100	100

There are no Ramachandran outliers to report.

5.3.2 Protein sidechains

In the following table, the Percentiles column shows the percent sidechain outliers of the chain as a percentile score with respect to all X-ray entries followed by that with respect to entries of similar resolution.

The Analysed column shows the number of residues for which the sidechain conformation was analysed, and the total number of residues.

Mol	Chain	Analysed	Rotameric	Outliers	Percentiles	
1	A	195/194 (100%)	194 (100%)	1 (0%)	92	92
1	B	198/194 (102%)	197 (100%)	1 (0%)	92	92
All	All	393/388 (101%)	391 (100%)	2 (0%)	92	92

All (2) residues with a non-rotameric sidechain are listed below:

Mol	Chain	Res	Type
1	A	295	GLN
1	B	355	ARG

Some sidechains can be flipped to improve hydrogen bonding and reduce clashes. All (7) such sidechains are listed below:

Mol	Chain	Res	Type
1	A	297	ASN

Continued on next page...

Continued from previous page...

Mol	Chain	Res	Type
1	A	386	GLN
1	A	429	HIS
1	A	433	HIS
1	B	268	HIS
1	B	295	GLN
1	B	429	HIS

5.3.3 RNA ⓘ

There are no RNA molecules in this entry.

5.4 Non-standard residues in protein, DNA, RNA chains ⓘ

There are no non-standard protein/DNA/RNA residues in this entry.

5.5 Carbohydrates ⓘ

19 carbohydrates are modelled in this entry.

In the following table, the Counts columns list the number of bonds (or angles) for which Mogul statistics could be retrieved, the number of bonds (or angles) that are observed in the model and the number of bonds (or angles) that are defined in the chemical component dictionary. The Link column lists molecule types, if any, to which the group is linked. The Z score for a bond length (or angle) is the number of standard deviations the observed value is removed from the expected value. A bond length (or angle) with $|Z| > 2$ is considered an outlier worth inspection. RMSZ is the root-mean-square of all Z scores of the bond lengths (or angles).

Mol	Type	Chain	Res	Link	Bond lengths			Bond angles		
					Counts	RMSZ	# $ Z > 2$	Counts	RMSZ	# $ Z > 2$
2	NAG	A	501	1,2	14,14,15	0.54	0	15,19,21	1.19	1 (6%)
2	NAG	A	502	2	14,14,15	0.78	0	15,19,21	1.80	3 (20%)
2	BMA	A	503	2	11,11,12	2.75	7 (63%)	14,15,17	3.67	7 (50%)
2	MAN	A	504	2	11,11,12	0.54	0	14,15,17	1.28	1 (7%)
2	NAG	A	505	2	14,14,15	0.59	0	15,19,21	0.89	0
2	GAL	A	506	2	11,11,12	0.69	0	14,15,17	1.08	1 (7%)
2	FUL	A	507	2	10,10,11	0.57	0	14,14,16	2.04	4 (28%)
2	MAN	A	508	2	11,11,12	0.57	0	14,15,17	1.89	2 (14%)
2	NAG	A	509	2	14,14,15	0.67	0	15,19,21	1.40	3 (20%)
2	GAL	A	510	2	11,11,12	1.28	1 (9%)	14,15,17	2.31	4 (28%)

Mol	Type	Chain	Res	Link	Bond lengths			Bond angles		
					Counts	RMSZ	# Z > 2	Counts	RMSZ	# Z > 2
4	NAG	B	501	1,4	14,14,15	0.59	0	15,19,21	1.18	1 (6%)
4	NAG	B	502	4	14,14,15	1.41	2 (14%)	15,19,21	1.48	3 (20%)
4	BMA	B	503	4	11,11,12	0.75	0	14,15,17	1.45	4 (28%)
4	MAN	B	504	4	11,11,12	0.94	0	14,15,17	1.70	2 (14%)
4	NAG	B	505	4	14,14,15	0.94	0	15,19,21	1.08	0
4	GAL	B	506	4	11,11,12	0.77	0	14,15,17	1.76	3 (21%)
4	MAN	B	507	4	11,11,12	0.68	0	14,15,17	1.47	3 (21%)
4	FUL	B	508	4	10,10,11	0.93	0	14,14,16	2.69	6 (42%)
4	NAG	B	509	4	14,14,15	0.28	0	15,19,21	0.53	0

In the following table, the Chirals column lists the number of chiral outliers, the number of chiral centers analysed, the number of these observed in the model and the number defined in the chemical component dictionary. Similar counts are reported in the Torsion and Rings columns. '-' means no outliers of that kind were identified.

Mol	Type	Chain	Res	Link	Chirals	Torsions	Rings
2	NAG	A	501	1,2	-	0/6/23/26	0/1/1/1
2	NAG	A	502	2	-	0/6/23/26	0/1/1/1
2	BMA	A	503	2	-	0/2/19/22	0/1/1/1
2	MAN	A	504	2	-	0/2/19/22	0/1/1/1
2	NAG	A	505	2	-	0/6/23/26	0/1/1/1
2	GAL	A	506	2	-	0/2/19/22	0/1/1/1
2	FUL	A	507	2	-	0/0/17/20	0/1/1/1
2	MAN	A	508	2	-	0/2/19/22	0/1/1/1
2	NAG	A	509	2	-	0/6/23/26	0/1/1/1
2	GAL	A	510	2	-	0/2/19/22	0/1/1/1
4	NAG	B	501	1,4	-	0/6/23/26	0/1/1/1
4	NAG	B	502	4	-	0/6/23/26	0/1/1/1
4	BMA	B	503	4	-	0/2/19/22	0/1/1/1
4	MAN	B	504	4	-	0/2/19/22	0/1/1/1
4	NAG	B	505	4	-	0/6/23/26	0/1/1/1
4	GAL	B	506	4	-	0/2/19/22	0/1/1/1
4	MAN	B	507	4	-	0/2/19/22	0/1/1/1
4	FUL	B	508	4	-	0/0/17/20	0/1/1/1
4	NAG	B	509	4	-	0/6/23/26	0/1/1/1

All (10) bond length outliers are listed below:

Mol	Chain	Res	Type	Atoms	Z	Observed(Å)	Ideal(Å)
2	A	503	BMA	O2-C2	-4.95	1.32	1.43
2	A	503	BMA	O3-C3	-4.79	1.31	1.43

Continued on next page...

Continued from previous page...

Mol	Chain	Res	Type	Atoms	Z	Observed(Å)	Ideal(Å)
4	B	502	NAG	O5-C1	-3.28	1.38	1.43
2	A	503	BMA	O5-C5	-3.04	1.36	1.43
2	A	503	BMA	O4-C4	-2.89	1.36	1.43
2	A	503	BMA	C6-C5	-2.34	1.43	1.51
2	A	503	BMA	O5-C1	-2.22	1.40	1.43
2	A	503	BMA	O6-C6	-2.12	1.33	1.42
4	B	502	NAG	O7-C7	2.16	1.28	1.23
2	A	510	GAL	O6-C6	3.17	1.56	1.42

All (48) bond angle outliers are listed below:

Mol	Chain	Res	Type	Atoms	Z	Observed(°)	Ideal(°)
2	A	510	GAL	C1-C2-C3	-7.03	101.22	109.54
2	A	503	BMA	O4-C4-C5	-5.89	93.63	109.24
2	A	503	BMA	O2-C2-C3	-5.85	98.36	110.12
2	A	503	BMA	O2-C2-C1	-5.10	98.99	109.21
2	A	504	MAN	O5-C1-C2	-3.28	105.53	110.86
4	B	504	MAN	O2-C2-C3	-3.21	103.66	110.12
4	B	502	NAG	O3-C3-C2	-2.86	103.44	109.11
4	B	503	BMA	O6-C6-C5	-2.68	102.49	111.33
2	A	503	BMA	O3-C3-C2	-2.67	105.17	110.00
4	B	507	MAN	O2-C2-C3	-2.47	105.16	110.12
4	B	507	MAN	O5-C1-C2	-2.40	106.96	110.86
2	A	502	NAG	O7-C7-C8	-2.35	117.75	122.06
2	A	510	GAL	C1-O5-C5	-2.34	109.28	112.25
4	B	506	GAL	O6-C6-C5	-2.32	103.66	111.33
4	B	501	NAG	C3-C4-C5	-2.30	106.19	110.20
2	A	508	MAN	C2-C3-C4	-2.26	107.21	111.04
2	A	509	NAG	O3-C3-C4	-2.25	105.28	110.34
2	A	502	NAG	O3-C3-C4	-2.20	105.39	110.34
4	B	503	BMA	O3-C3-C4	-2.17	105.44	110.34
2	A	510	GAL	O5-C5-C6	2.11	111.92	107.35
4	B	502	NAG	O7-C7-C8	2.13	125.97	122.06
4	B	503	BMA	O5-C1-C2	2.17	114.37	110.86
2	A	507	FUL	O5-C1-C2	2.21	114.45	110.86
2	A	510	GAL	C3-C4-C5	2.22	114.06	110.20
4	B	503	BMA	O5-C5-C6	2.27	112.25	107.35
2	A	506	GAL	C1-C2-C3	2.36	112.33	109.54
2	A	509	NAG	O4-C4-C5	2.48	115.81	109.24
4	B	502	NAG	C1-O5-C5	2.59	115.53	112.25
2	A	507	FUL	C2-C3-C4	2.60	115.47	111.04
4	B	508	FUL	O5-C5-C4	2.66	114.15	109.53

Continued on next page...

Continued from previous page...

Mol	Chain	Res	Type	Atoms	Z	Observed(°)	Ideal(°)
2	A	507	FUL	C1-C2-C3	2.67	112.70	109.54
4	B	506	GAL	O2-C2-C1	2.73	114.67	109.21
2	A	509	NAG	C3-C4-C5	2.86	115.18	110.20
4	B	508	FUL	O3-C3-C4	2.97	117.03	110.34
4	B	508	FUL	O5-C1-C2	3.01	115.73	110.86
2	A	503	BMA	C6-C5-C4	3.15	120.79	113.02
4	B	508	FUL	C1-O5-C5	3.30	117.48	112.38
2	A	501	NAG	O5-C5-C6	3.53	115.00	107.35
4	B	507	MAN	C1-O5-C5	3.60	116.82	112.25
4	B	504	MAN	C1-O5-C5	3.64	116.87	112.25
4	B	506	GAL	O5-C5-C6	4.70	117.51	107.35
2	A	503	BMA	O5-C1-C2	4.79	118.62	110.86
4	B	508	FUL	O5-C5-C6	4.95	114.31	106.13
4	B	508	FUL	C1-C2-C3	5.08	115.56	109.54
2	A	507	FUL	C1-O5-C5	5.22	120.44	112.38
2	A	502	NAG	C1-O5-C5	5.50	119.22	112.25
2	A	508	MAN	C1-O5-C5	5.86	119.68	112.25
2	A	503	BMA	C1-C2-C3	6.40	117.11	109.54

There are no chirality outliers.

There are no torsion outliers.

There are no ring outliers.

5 monomers are involved in 8 short contacts:

Mol	Chain	Res	Type	Clashes	Symm-Clashes
2	A	501	NAG	4	0
2	A	504	MAN	3	0
2	A	505	NAG	3	0
2	A	509	NAG	1	0
2	A	510	GAL	1	0

5.6 Ligand geometry ⓘ

1 ligand is modelled in this entry.

In the following table, the Counts columns list the number of bonds (or angles) for which Mogul statistics could be retrieved, the number of bonds (or angles) that are observed in the model and the number of bonds (or angles) that are defined in the chemical component dictionary. The Link column lists molecule types, if any, to which the group is linked. The Z score for a bond length (or angle) is the number of standard deviations the observed value is removed from the expected value. A bond length (or angle) with $|Z| > 2$ is considered an outlier worth inspection. RMSZ is

the root-mean-square of all Z scores of the bond lengths (or angles).

Mol	Type	Chain	Res	Link	Bond lengths			Bond angles		
					Counts	RMSZ	# Z > 2	Counts	RMSZ	# Z > 2
3	PG4	A	511	-	12,12,12	0.46	0	11,11,11	0.89	0

In the following table, the Chirals column lists the number of chiral outliers, the number of chiral centers analysed, the number of these observed in the model and the number defined in the chemical component dictionary. Similar counts are reported in the Torsion and Rings columns. '-' means no outliers of that kind were identified.

Mol	Type	Chain	Res	Link	Chirals	Torsions	Rings
3	PG4	A	511	-	-	0/10/10/10	0/0/0/0

There are no bond length outliers.

There are no bond angle outliers.

There are no chirality outliers.

There are no torsion outliers.

There are no ring outliers.

No monomer is involved in short contacts.

5.7 Other polymers [i](#)

There are no such residues in this entry.

5.8 Polymer linkage issues [i](#)

There are no chain breaks in this entry.

6 Fit of model and data [i](#)

6.1 Protein, DNA and RNA chains [i](#)

In the following table, the column labelled ‘#RSRZ > 2’ contains the number (and percentage) of RSRZ outliers, followed by percent RSRZ outliers for the chain as percentile scores relative to all X-ray entries and entries of similar resolution. The OWAB column contains the minimum, median, 95th percentile and maximum values of the occupancy-weighted average B-factor per residue. The column labelled ‘Q < 0.9’ lists the number of (and percentage) of residues with an average occupancy less than 0.9.

Mol	Chain	Analysed	<RSRZ>	#RSRZ > 2	OWAB(Å ²)	Q < 0.9
1	A	207/208 (99%)	0.41	12 (5%) 26 29	15, 31, 55, 67	0
1	B	208/208 (100%)	0.02	1 (0%) 91 92	13, 26, 41, 55	0
All	All	415/416 (99%)	0.21	13 (3%) 52 56	13, 28, 50, 67	0

All (13) RSRZ outliers are listed below:

Mol	Chain	Res	Type	RSRZ
1	A	298	SER	7.0
1	A	385	GLY	3.9
1	A	299	THR	3.6
1	A	266	VAL	3.2
1	A	300	TYR	2.6
1	B	361	ASN	2.5
1	A	389	ASN	2.5
1	A	297	ASN	2.5
1	A	268	HIS	2.2
1	A	302	VAL	2.2
1	A	295	GLN	2.1
1	A	237	GLY	2.0
1	A	387	PRO	2.0

6.2 Non-standard residues in protein, DNA, RNA chains [i](#)

There are no non-standard protein/DNA/RNA residues in this entry.

6.3 Carbohydrates [i](#)

In the following table, the Atoms column lists the number of modelled atoms in the group and the number defined in the chemical component dictionary. LLDF column lists the quality of electron density of the group with respect to its neighbouring residues in protein, DNA or RNA chains.

The B-factors column lists the minimum, median, 95th percentile and maximum values of B factors of atoms in the group. The column labelled 'Q< 0.9' lists the number of atoms with occupancy less than 0.9.

Mol	Type	Chain	Res	Atoms	RSCC	RSR	LLDF	B-factors(Å ²)	Q<0.9
2	GAL	A	506	11/12	0.93	0.10	-0.08	33,36,43,47	0
4	NAG	B	501	14/15	0.92	0.11	-0.23	31,34,39,42	0
2	NAG	A	505	14/15	0.92	0.12	-0.26	39,44,51,51	0
4	GAL	B	506	11/12	0.97	0.10	-0.33	21,22,26,32	0
4	NAG	B	505	14/15	0.94	0.08	-0.83	23,28,37,38	0
2	BMA	A	503	11/12	0.81	0.14	-	51,52,57,58	0
4	FUL	B	508	10/11	0.75	0.23	-	52,57,60,61	0
2	NAG	A	502	14/15	0.86	0.14	-	51,53,55,56	0
4	NAG	B	502	14/15	0.93	0.09	-	25,29,34,40	0
4	MAN	B	507	11/12	0.92	0.14	-	41,46,48,48	0
2	NAG	A	501	14/15	0.67	0.22	-	55,60,66,70	0
4	MAN	B	504	11/12	0.94	0.10	-	27,29,37,39	0
4	NAG	B	509	14/15	0.74	0.38	-	85,89,90,90	0
2	FUL	A	507	10/11	0.51	0.38	-	84,87,87,88	0
2	GAL	A	510	11/12	0.39	0.71	-	97,99,100,101	0
2	MAN	A	504	11/12	0.78	0.17	-	51,52,53,56	0
2	NAG	A	509	14/15	0.80	0.25	-	81,87,88,93	0
4	BMA	B	503	11/12	0.93	0.10	-	27,31,34,37	0
2	MAN	A	508	11/12	0.77	0.25	-	59,64,68,74	0

6.4 Ligands ⓘ

In the following table, the Atoms column lists the number of modelled atoms in the group and the number defined in the chemical component dictionary. LLDF column lists the quality of electron density of the group with respect to its neighbouring residues in protein, DNA or RNA chains. The B-factors column lists the minimum, median, 95th percentile and maximum values of B factors of atoms in the group. The column labelled 'Q< 0.9' lists the number of atoms with occupancy less than 0.9.

Mol	Type	Chain	Res	Atoms	RSCC	RSR	LLDF	B-factors(Å ²)	Q<0.9
3	PG4	A	511	13/13	0.89	0.14	4.98	42,44,49,50	0

6.5 Other polymers ⓘ

There are no such residues in this entry.