



Full wwPDB X-ray Structure Validation Report ⓘ

Mar 21, 2016 – 08:33 PM EDT

PDB ID : 1KZU
Title : INTEGRAL MEMBRANE PERIPHERAL LIGHT HARVESTING COMPLEX FROM RHODOPSEUDOMONAS ACIDOPHILA STRAIN 10050
Authors : Cogdell, R.J.; Freer, A.A.; Isaacs, N.W.; Hawthornthwaite-Lawless, A.M.; McDermott, G.; Papiz, M.Z.; Prince, S.M.
Deposited on : 1996-08-31
Resolution : 2.50 Å(reported)

This is a Full wwPDB X-ray Structure Validation Report for a publicly released PDB entry.
We welcome your comments at validation@mail.wwpdb.org
A user guide is available at
<http://wwpdb.org/validation/2016/XrayValidationReportHelp>
with specific help available everywhere you see the ⓘ symbol.

The following versions of software and data (see [references ⓘ](#)) were used in the production of this report:

MolProbity : 4.02b-467
Mogul : 1.7.1 (RC1), CSD as537be (2016)
Xtriage (Phenix) : 1.9-1692
EDS : rb-20027107
Percentile statistics : 20151230.v01 (using entries in the PDB archive December 30th 2015)
Refmac : 5.8.0122
CCP4 : 6.5.0
Ideal geometry (proteins) : Engh & Huber (2001)
Ideal geometry (DNA, RNA) : Parkinson et al. (1996)
Validation Pipeline (wwPDB-VP) : rb-20027107

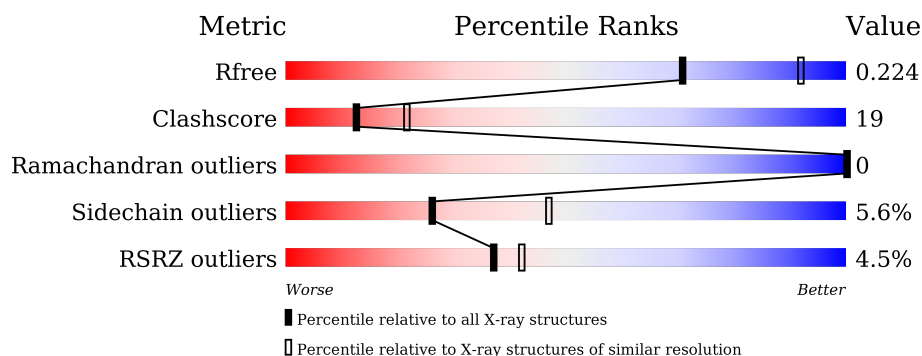
1 Overall quality at a glance

The following experimental techniques were used to determine the structure:

X-RAY DIFFRACTION

The reported resolution of this entry is 2.50 Å.

Percentile scores (ranging between 0-100) for global validation metrics of the entry are shown in the following graphic. The table shows the number of entries on which the scores are based.



Metric	Whole archive (#Entries)	Similar resolution (#Entries, resolution range(Å))
R_{free}	91344	3553 (2.50-2.50)
Clashscore	102246	4242 (2.50-2.50)
Ramachandran outliers	100387	4156 (2.50-2.50)
Sidechain outliers	100360	4158 (2.50-2.50)
RSRZ outliers	91569	3562 (2.50-2.50)

The table below summarises the geometric issues observed across the polymeric chains and their fit to the electron density. The red, orange, yellow and green segments on the lower bar indicate the fraction of residues that contain outliers for ≥ 3 , 2, 1 and 0 types of geometric quality criteria. A grey segment represents the fraction of residues that are not modelled. The numeric value for each fraction is indicated below the corresponding segment, with a dot representing fractions $\leq 5\%$. The upper red bar (where present) indicates the fraction of residues that have poor fit to the electron density. The numeric value is given above the bar.

Mol	Chain	Length	Quality of chain
1	A	53	<div> <div>4%</div> <div> <div></div> <div>79%</div> <div>13%</div> <div>8%</div> </div> </div>
1	D	53	<div> <div>4%</div> <div> <div></div> <div>79%</div> <div>13%</div> <div>8%</div> </div> </div>
1	G	53	<div> <div>4%</div> <div> <div></div> <div>79%</div> <div>13%</div> <div>8%</div> </div> </div>
2	B	41	<div> <div>5%</div> <div> <div></div> <div>63%</div> <div>34%</div> <div>.</div> </div> </div>
2	E	41	<div> <div>5%</div> <div> <div></div> <div>66%</div> <div>32%</div> <div>.</div> </div> </div>
2	H	41	<div> <div>5%</div> <div> <div></div> <div>63%</div> <div>34%</div> <div>.</div> </div> </div>

The following table lists non-polymeric compounds, carbohydrate monomers and non-standard residues in protein, DNA, RNA chains that are outliers for geometric or electron-density-fit criteria:

Mol	Type	Chain	Res	Chirality	Geometry	Clashes	Electron density
3	RG1	A	54	X	-	-	X
3	RG1	B	42	X	-	-	-
3	RG1	D	54	X	-	-	X
3	RG1	E	42	X	-	-	-
3	RG1	G	54	X	-	-	X
3	RG1	H	42	X	-	-	-
4	BCL	A	55	X	-	-	-
4	BCL	B	43	X	-	-	-
4	BCL	D	55	X	-	-	-
4	BCL	E	43	X	-	-	-
4	BCL	G	55	X	-	-	-
4	BCL	H	43	X	-	-	-

2 Entry composition

There are 5 unique types of molecules in this entry. The entry contains 2961 atoms, of which 0 are hydrogens and 0 are deuteriums.

In the tables below, the ZeroOcc column contains the number of atoms modelled with zero occupancy, the AltConf column contains the number of residues with at least one atom in alternate conformation and the Trace column contains the number of residues modelled with at most 2 atoms.

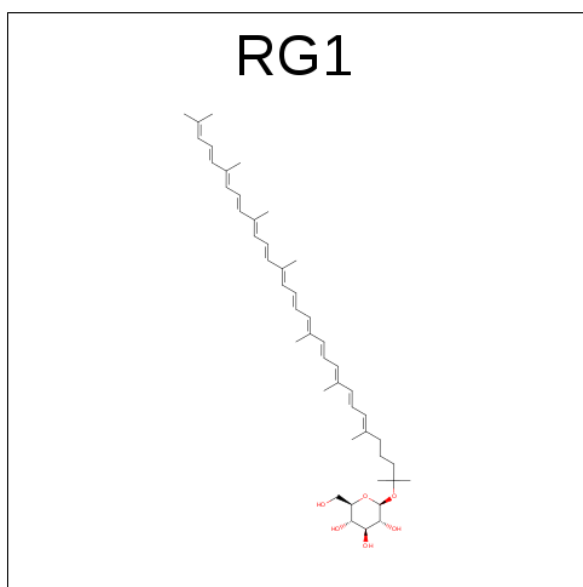
- Molecule 1 is a protein called LIGHT HARVESTING PROTEIN B-800/850.

Mol	Chain	Residues	Atoms					ZeroOcc	AltConf	Trace
1	A	49	Total	C	N	O	S	0	0	0
			374	251	61	61	1			
1	D	49	Total	C	N	O	S	0	0	0
			374	251	61	61	1			
1	G	49	Total	C	N	O	S	0	0	0
			374	251	61	61	1			

- Molecule 2 is a protein called LIGHT HARVESTING PROTEIN B-800/850.

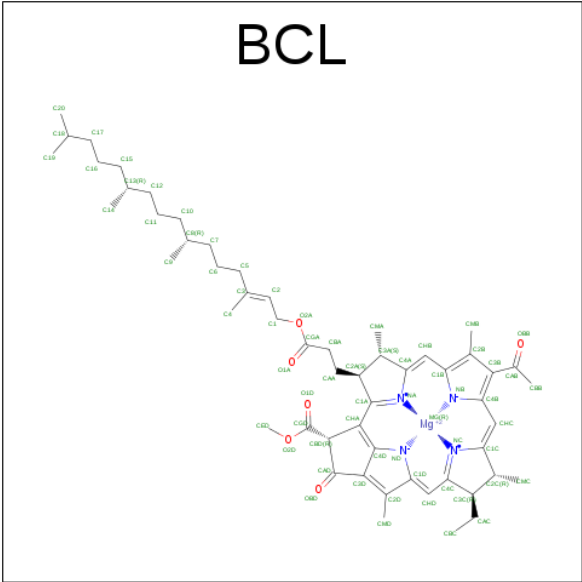
Mol	Chain	Residues	Atoms				ZeroOcc	AltConf	Trace
2	B	41	Total	C	N	O	0	0	0
			324	213	53	58			
2	E	41	Total	C	N	O	0	0	0
			324	213	53	58			
2	H	41	Total	C	N	O	0	0	0
			324	213	53	58			

- Molecule 3 is SUGAR (RHODOPIN B-D-GLUCOSIDE) (three-letter code: RG1) (formula: C₄₆H₆₆O₆).



Mol	Chain	Residues	Atoms			ZeroOcc	AltConf
3	B	1	Total	C	O	0	0
			52	46	6		
3	A	1	Total	C	O	0	0
			22	16	6		
3	E	1	Total	C	O	0	0
			52	46	6		
3	D	1	Total	C	O	0	0
			22	16	6		
3	H	1	Total	C	O	0	0
			52	46	6		
3	G	1	Total	C	O	0	0
			22	16	6		

- Molecule 4 is BACTERIOCHLOROPHYLL A (three-letter code: BCL) (formula: $C_{55}H_{74}MgN_4O_6$).



Mol	Chain	Residues	Atoms					ZeroOcc	AltConf
4	A	1	Total 66	C 55	Mg 1	N 4	O 6	0	0
4	B	1	Total 66	C 55	Mg 1	N 4	O 6	0	0
4	A	1	Total 66	C 55	Mg 1	N 4	O 6	0	0
4	D	1	Total 66	C 55	Mg 1	N 4	O 6	0	0
4	E	1	Total 66	C 55	Mg 1	N 4	O 6	0	0
4	D	1	Total 66	C 55	Mg 1	N 4	O 6	0	0
4	G	1	Total 66	C 55	Mg 1	N 4	O 6	0	0
4	H	1	Total 66	C 55	Mg 1	N 4	O 6	0	0
4	G	1	Total 66	C 55	Mg 1	N 4	O 6	0	0

- Molecule 5 is water.

Mol	Chain	Residues	Atoms		ZeroOcc	AltConf
5	A	11	Total	O	0	0
			11	11		
5	B	4	Total	O	0	0
			4	4		
5	D	11	Total	O	0	0
			11	11		

Continued on next page...

Continued from previous page...

Mol	Chain	Residues	Atoms		ZeroOcc	AltConf
5	E	6	Total 6	O 6	0	0
5	G	13	Total 13	O 13	0	0
5	H	6	Total 6	O 6	0	0

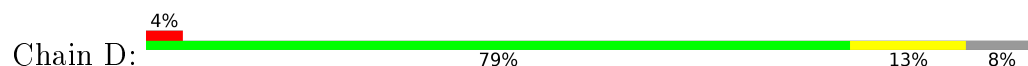
3 Residue-property plots [i](#)

These plots are drawn for all protein, RNA and DNA chains in the entry. The first graphic for a chain summarises the proportions of errors displayed in the second graphic. The second graphic shows the sequence view annotated by issues in geometry and electron density. Residues are color-coded according to the number of geometric quality criteria for which they contain at least one outlier: green = 0, yellow = 1, orange = 2 and red = 3 or more. A red dot above a residue indicates a poor fit to the electron density ($RSRZ > 2$). Stretches of 2 or more consecutive residues without any outlier are shown as a green connector. Residues present in the sample, but not in the model, are shown in grey.

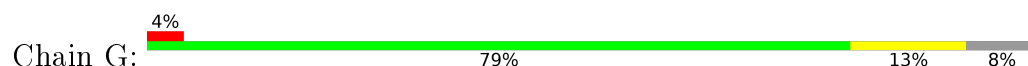
- Molecule 1: LIGHT HARVESTING PROTEIN B-800/850



- Molecule 1: LIGHT HARVESTING PROTEIN B-800/850



- Molecule 1: LIGHT HARVESTING PROTEIN B-800/850



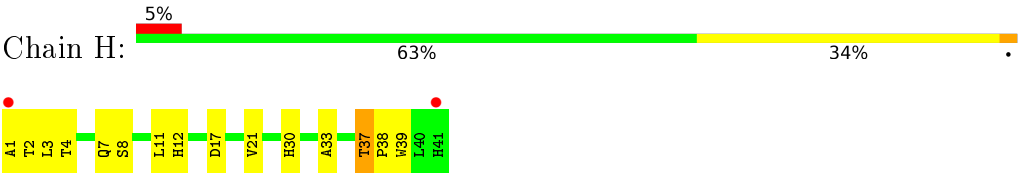
- Molecule 2: LIGHT HARVESTING PROTEIN B-800/850



- Molecule 2: LIGHT HARVESTING PROTEIN B-800/850



- Molecule 2: LIGHT HARVESTING PROTEIN B-800/850



4 Data and refinement statistics

Property	Value	Source
Space group	H 3 2	Depositor
Cell constants a, b, c, α , β , γ	120.30Å 120.30Å 296.20Å 90.00° 90.00° 120.00°	Depositor
Resolution (Å)	12.00 – 2.50 11.99 – 2.50	Depositor EDS
% Data completeness (in resolution range)	98.7 (12.00-2.50) 99.2 (11.99-2.50)	Depositor EDS
R_{merge}	0.05	Depositor
R_{sym}	(Not available)	Depositor
$\langle I/\sigma(I) \rangle$ ¹	13.37 (at 2.49Å)	Xtriage
Refinement program	X-PLOR 3.1	Depositor
R, R_{free}	0.227 , 0.252 0.202 , 0.224	Depositor DCC
R_{free} test set	1311 reflections (4.85%)	DCC
Wilson B-factor (Å ²)	34.4	Xtriage
Anisotropy	0.069	Xtriage
Bulk solvent k_{sol} (e/Å ³), B_{sol} (Å ²)	0.37 , 83.9	EDS
Estimated twinning fraction	0.000 for -1/3*h+1/3*k+1/3*l,-k,8/3*h+4/3*k+1/3*l 0.000 for -2/3*h-1/3*k-1/3*l,-1/3*h-2/3*k+1/3*l,-4/3*h+4/3*k+1/3*l 0.000 for -h,1/3*h-1/3*k-1/3*l,-4/3*h-8/3*k+1/3*l	Xtriage
L-test for twinning ²	$\langle L \rangle = 0.52$, $\langle L^2 \rangle = 0.36$	Xtriage
Outliers	2 of 28333 reflections (0.007%)	Xtriage
F_o, F_c correlation	0.95	EDS
Total number of atoms	2961	wwPDB-VP
Average B, all atoms (Å ²)	29.0	wwPDB-VP

Xtriage's analysis on translational NCS is as follows: *The largest off-origin peak in the Patterson function is 7.08% of the height of the origin peak. No significant pseudotranslation is detected.*

¹Intensities estimated from amplitudes.

²Theoretical values of $\langle |L| \rangle$, $\langle L^2 \rangle$ for acentric reflections are 0.5, 0.375 respectively for untwinned datasets, and 0.333, 0.2 for perfectly twinned datasets.

5 Model quality [i](#)

5.1 Standard geometry [i](#)

Bond lengths and bond angles in the following residue types are not validated in this section: BCL, RG1, FME

The Z score for a bond length (or angle) is the number of standard deviations the observed value is removed from the expected value. A bond length (or angle) with $|Z| > 5$ is considered an outlier worth inspection. RMSZ is the root-mean-square of all Z scores of the bond lengths (or angles).

Mol	Chain	Bond lengths		Bond angles	
		RMSZ	$\# Z > 5$	RMSZ	$\# Z > 5$
1	A	0.54	0/376	0.72	0/520
1	D	0.54	0/376	0.72	0/520
1	G	0.54	0/376	0.72	0/520
2	B	0.53	0/333	0.66	0/453
2	E	0.53	0/333	0.66	0/453
2	H	0.53	0/333	0.67	0/453
All	All	0.53	0/2127	0.69	0/2919

There are no bond length outliers.

There are no bond angle outliers.

There are no chirality outliers.

There are no planarity outliers.

5.2 Too-close contacts [i](#)

In the following table, the Non-H and H(model) columns list the number of non-hydrogen atoms and hydrogen atoms in the chain respectively. The H(added) column lists the number of hydrogen atoms added and optimized by MolProbity. The Clashes column lists the number of clashes within the asymmetric unit, whereas Symm-Clashes lists symmetry related clashes.

Mol	Chain	Non-H	H(model)	H(added)	Clashes	Symm-Clashes
1	A	374	0	387	6	0
1	D	374	0	387	6	0
1	G	374	0	387	6	0
2	B	324	0	321	19	0
2	E	324	0	321	18	0
2	H	324	0	321	19	0
3	A	22	0	27	3	0

Continued on next page...

Continued from previous page...

Mol	Chain	Non-H	H(model)	H(added)	Clashes	Symm-Clashes
3	B	52	0	66	1	0
3	D	22	0	27	5	0
3	E	52	0	66	1	0
3	G	22	0	27	5	0
3	H	52	0	66	1	0
4	A	132	0	148	11	0
4	B	66	0	74	7	0
4	D	132	0	148	13	0
4	E	66	0	74	7	0
4	G	132	0	148	12	0
4	H	66	0	74	5	0
5	A	11	0	0	0	0
5	B	4	0	0	1	0
5	D	11	0	0	0	0
5	E	6	0	0	1	1
5	G	13	0	0	0	0
5	H	6	0	0	1	0
All	All	2961	0	3069	116	1

The all-atom clashscore is defined as the number of clashes found per 1000 atoms (including hydrogen atoms). The all-atom clashscore for this structure is 19.

All (116) close contacts within the same asymmetric unit are listed below, sorted by their clash magnitude.

Atom-1	Atom-2	Interatomic distance (Å)	Clash overlap (Å)
4:A:56:BCL:HHC	4:A:56:BCL:HBB2	1.30	1.09
4:D:56:BCL:HBB2	4:D:56:BCL:HHC	1.30	1.08
4:G:56:BCL:HHC	4:G:56:BCL:HBB2	1.30	1.06
2:E:33:ALA:O	2:E:37:THR:HB	1.72	0.90
2:H:33:ALA:O	2:H:37:THR:HB	1.72	0.90
2:B:33:ALA:O	2:B:37:THR:HB	1.72	0.89
4:G:56:BCL:CHC	4:G:56:BCL:HBB2	2.06	0.85
4:D:56:BCL:HBB2	4:D:56:BCL:CHC	2.06	0.84
4:A:56:BCL:CHC	4:A:56:BCL:HBB2	2.06	0.81
4:A:56:BCL:HED1	4:D:55:BCL:C19	2.19	0.72
4:D:56:BCL:HED1	4:G:55:BCL:C19	2.19	0.72
4:B:43:BCL:HHC	4:B:43:BCL:OBB	2.00	0.62
4:E:43:BCL:OBB	4:E:43:BCL:HHC	2.00	0.61
4:H:43:BCL:OBB	4:H:43:BCL:HHC	2.00	0.61
4:A:56:BCL:HED1	4:D:55:BCL:H192	1.84	0.59
4:D:56:BCL:CHC	4:D:56:BCL:CBB	2.78	0.59

Continued on next page...

Continued from previous page...

Atom-1	Atom-2	Interatomic distance (Å)	Clash overlap (Å)
4:D:56:BCL:HED1	4:G:55:BCL:H192	1.84	0.59
4:E:43:BCL:HMB1	3:G:54:RG1:HM32	1.85	0.58
4:D:55:BCL:OBB	4:D:55:BCL:HHC	2.03	0.58
4:G:55:BCL:HHC	4:G:55:BCL:OBB	2.03	0.58
4:B:43:BCL:HMB1	3:D:54:RG1:HM32	1.85	0.57
4:A:55:BCL:HHC	4:A:55:BCL:OBB	2.03	0.57
1:A:41:PHE:HB3	1:A:42:PRO:HD3	1.86	0.57
1:D:41:PHE:HB3	1:D:42:PRO:HD3	1.87	0.57
2:H:3:LEU:HB3	2:H:7:GLN:HB2	1.87	0.57
1:G:41:PHE:HB3	1:G:42:PRO:HD3	1.87	0.56
2:E:3:LEU:HB3	2:E:7:GLN:HB2	1.87	0.56
4:A:56:BCL:CBB	4:A:56:BCL:CHC	2.78	0.56
2:B:3:LEU:HB3	2:B:7:GLN:HB2	1.87	0.55
2:B:37:THR:CG2	2:B:39:TRP:H	2.21	0.54
1:D:1:FME:HCN	2:E:12:HIS:HE1	1.73	0.54
2:E:37:THR:CG2	2:E:39:TRP:H	2.21	0.54
1:A:1:FME:HCN	2:B:12:HIS:HE1	1.73	0.54
1:G:1:FME:HCN	2:H:12:HIS:HE1	1.73	0.54
2:H:37:THR:CG2	2:H:39:TRP:H	2.21	0.53
2:H:37:THR:HG22	2:H:39:TRP:HB3	1.90	0.53
2:B:37:THR:HG22	2:B:39:TRP:HB3	1.90	0.52
2:E:37:THR:HG22	2:E:39:TRP:HB3	1.90	0.52
2:H:4:THR:OG1	2:H:7:GLN:HG3	2.11	0.51
2:E:4:THR:OG1	2:E:7:GLN:HG3	2.11	0.50
4:D:55:BCL:HBB3	4:D:55:BCL:HMB1	1.93	0.50
4:G:55:BCL:HMB1	4:G:55:BCL:HBB3	1.93	0.50
2:B:4:THR:OG1	2:B:7:GLN:HG3	2.11	0.50
4:A:55:BCL:HMB1	4:A:55:BCL:HBB3	1.93	0.50
4:G:55:BCL:HMB1	4:G:55:BCL:CBB	2.42	0.50
4:G:56:BCL:CBB	4:G:56:BCL:CHC	2.78	0.50
1:G:1:FME:CN	2:H:12:HIS:HE1	2.25	0.49
1:A:1:FME:CN	2:B:12:HIS:HE1	2.25	0.49
4:A:55:BCL:HMB1	4:A:55:BCL:CBB	2.42	0.49
4:B:43:BCL:HMB1	3:D:54:RG1:CM3	2.42	0.49
4:D:55:BCL:CBB	4:D:55:BCL:HMB1	2.42	0.49
1:A:31:HIS:CE1	4:B:43:BCL:HMD1	2.48	0.49
1:D:31:HIS:CE1	4:E:43:BCL:HMD1	2.48	0.49
1:G:31:HIS:CE1	4:H:43:BCL:HMD1	2.48	0.49
1:D:1:FME:CN	2:E:12:HIS:HE1	2.25	0.48
4:E:43:BCL:HMB1	3:G:54:RG1:CM3	2.42	0.48
3:D:54:RG1:HM12	4:D:55:BCL:H3C	1.96	0.48

Continued on next page...

Continued from previous page...

Atom-1	Atom-2	Interatomic distance (Å)	Clash overlap (Å)
3:G:54:RG1:HM12	4:G:55:BCL:H3C	1.96	0.48
3:H:42:RG1:H1'	3:H:42:RG1:HM13	1.58	0.47
3:A:54:RG1:HM12	4:A:55:BCL:H3C	1.96	0.47
2:H:3:LEU:HD12	2:H:8:SER:HA	1.96	0.47
2:B:3:LEU:HD12	2:B:8:SER:HA	1.96	0.47
2:E:3:LEU:HD12	2:E:8:SER:HA	1.96	0.47
3:E:42:RG1:H1'	3:E:42:RG1:HM13	1.58	0.46
3:G:54:RG1:H32	3:G:54:RG1:HM11	1.62	0.46
1:G:1:FME:HCN	2:H:12:HIS:CE1	2.51	0.46
4:B:43:BCL:HMB1	4:B:43:BCL:HBB2	1.98	0.46
1:D:1:FME:HCN	2:E:12:HIS:CE1	2.51	0.46
2:E:37:THR:HG22	2:E:39:TRP:H	1.82	0.45
2:H:4:THR:H	2:H:7:GLN:HE21	1.64	0.45
2:E:37:THR:CG2	2:E:39:TRP:HB3	2.46	0.45
2:H:37:THR:CG2	2:H:39:TRP:HB3	2.46	0.45
3:A:54:RG1:H32	3:A:54:RG1:HM11	1.62	0.45
2:B:37:THR:HG22	2:B:39:TRP:H	1.82	0.45
4:E:43:BCL:HBB2	4:E:43:BCL:HMB1	1.98	0.45
1:A:1:FME:HCN	2:B:12:HIS:CE1	2.51	0.45
4:A:55:BCL:HMD1	2:B:30:HIS:CE1	2.52	0.45
2:E:4:THR:H	2:E:7:GLN:HE21	1.64	0.45
2:B:4:THR:H	2:B:7:GLN:HE21	1.64	0.45
4:D:55:BCL:HMD1	2:E:30:HIS:CE1	2.52	0.45
2:B:37:THR:CG2	2:B:39:TRP:HB3	2.46	0.45
2:H:17:ASP:O	2:H:21:VAL:HG23	2.17	0.45
4:H:43:BCL:HBB2	4:H:43:BCL:HMB1	1.98	0.45
4:G:55:BCL:HMD1	2:H:30:HIS:CE1	2.52	0.44
3:A:54:RG1:HM13	3:A:54:RG1:H1'	1.66	0.44
3:D:54:RG1:H1'	3:D:54:RG1:HM13	1.66	0.44
2:E:17:ASP:O	2:E:21:VAL:HG23	2.17	0.44
2:B:17:ASP:O	2:B:21:VAL:HG23	2.17	0.44
3:G:54:RG1:H1'	3:G:54:RG1:HM13	1.66	0.44
4:B:43:BCL:H41	4:B:43:BCL:H71	2.00	0.44
4:H:43:BCL:H71	4:H:43:BCL:H41	2.00	0.43
1:D:8:THR:O	2:E:2:THR:HG23	2.19	0.43
2:E:1:ALA:O	2:E:2:THR:HB	2.19	0.43
4:E:43:BCL:H71	4:E:43:BCL:H41	2.00	0.43
2:H:1:ALA:O	2:H:2:THR:HB	2.19	0.43
1:A:8:THR:O	2:B:2:THR:HG23	2.19	0.43
2:H:37:THR:HG22	2:H:39:TRP:H	1.82	0.43
1:G:8:THR:O	2:H:2:THR:HG23	2.19	0.43

Continued on next page...

Continued from previous page...

Atom-1	Atom-2	Interatomic distance (Å)	Clash overlap (Å)
2:B:1:ALA:O	2:B:2:THR:HB	2.19	0.43
4:B:43:BCL:H93	4:B:43:BCL:H61	1.76	0.43
4:E:43:BCL:H61	4:E:43:BCL:H93	1.76	0.43
2:B:40:LEU:HA	2:B:40:LEU:HD23	1.88	0.42
2:B:1:ALA:N	5:B:44:HOH:O	2.52	0.42
2:E:1:ALA:N	5:E:46:HOH:O	2.52	0.42
3:D:54:RG1:H32	3:D:54:RG1:HM11	1.62	0.42
2:H:1:ALA:N	5:H:46:HOH:O	2.52	0.42
4:G:55:BCL:H161	4:G:55:BCL:H121	1.84	0.42
4:G:56:BCL:H122	4:G:56:BCL:H161	1.90	0.42
4:A:55:BCL:H161	4:A:55:BCL:H121	1.84	0.41
2:B:37:THR:HG23	2:B:39:TRP:H	1.85	0.41
4:D:56:BCL:H122	4:D:56:BCL:H161	1.90	0.41
3:B:42:RG1:H1'	3:B:42:RG1:HM13	1.58	0.41
4:H:43:BCL:H61	4:H:43:BCL:H93	1.76	0.41
2:E:37:THR:HG23	2:E:39:TRP:H	1.85	0.41
2:H:37:THR:HG23	2:H:39:TRP:H	1.85	0.40
2:H:37:THR:HA	2:H:38:PRO:HD3	1.90	0.40

All (1) symmetry-related close contacts are listed below. The label for Atom-2 includes the symmetry operator and encoded unit-cell translations to be applied.

Atom-1	Atom-2	Interatomic distance (Å)	Clash overlap (Å)
5:E:45:HOH:O	5:E:45:HOH:O[12_555]	0.39	1.81

5.3 Torsion angles ⓘ

5.3.1 Protein backbone ⓘ

In the following table, the Percentiles column shows the percent Ramachandran outliers of the chain as a percentile score with respect to all X-ray entries followed by that with respect to entries of similar resolution.

The Analysed column shows the number of residues for which the backbone conformation was analysed, and the total number of residues.

Mol	Chain	Analysed	Favoured	Allowed	Outliers	Percentiles	
1	A	47/53 (89%)	47 (100%)	0	0	100	100
1	D	47/53 (89%)	47 (100%)	0	0	100	100

Continued on next page...

Continued from previous page...

Mol	Chain	Analysed	Favoured	Allowed	Outliers	Percentiles	
1	G	47/53 (89%)	47 (100%)	0	0	100	100
2	B	39/41 (95%)	36 (92%)	3 (8%)	0	100	100
2	E	39/41 (95%)	36 (92%)	3 (8%)	0	100	100
2	H	39/41 (95%)	35 (90%)	4 (10%)	0	100	100
All	All	258/282 (92%)	248 (96%)	10 (4%)	0	100	100

There are no Ramachandran outliers to report.

5.3.2 Protein sidechains ⓘ

In the following table, the Percentiles column shows the percent sidechain outliers of the chain as a percentile score with respect to all X-ray entries followed by that with respect to entries of similar resolution.

The Analysed column shows the number of residues for which the sidechain conformation was analysed, and the total number of residues.

Mol	Chain	Analysed	Rotameric	Outliers	Percentiles	
1	A	38/40 (95%)	36 (95%)	2 (5%)	28	50
1	D	38/40 (95%)	36 (95%)	2 (5%)	28	50
1	G	38/40 (95%)	36 (95%)	2 (5%)	28	50
2	B	33/33 (100%)	31 (94%)	2 (6%)	23	42
2	E	33/33 (100%)	31 (94%)	2 (6%)	23	42
2	H	33/33 (100%)	31 (94%)	2 (6%)	23	42
All	All	213/219 (97%)	201 (94%)	12 (6%)	26	47

All (12) residues with a non-rotameric sidechain are listed below:

Mol	Chain	Res	Type
1	A	6	ILE
1	A	46	GLN
2	B	11	LEU
2	B	37	THR
1	D	6	ILE
1	D	46	GLN
2	E	11	LEU
2	E	37	THR
1	G	6	ILE

Continued on next page...

Continued from previous page...

Mol	Chain	Res	Type
1	G	46	GLN
2	H	11	LEU
2	H	37	THR

Some sidechains can be flipped to improve hydrogen bonding and reduce clashes. All (7) such sidechains are listed below:

Mol	Chain	Res	Type
1	A	46	GLN
2	B	7	GLN
2	B	12	HIS
2	E	7	GLN
2	E	12	HIS
2	H	7	GLN
2	H	12	HIS

5.3.3 RNA ⓘ

There are no RNA molecules in this entry.

5.4 Non-standard residues in protein, DNA, RNA chains ⓘ

3 non-standard protein/DNA/RNA residues are modelled in this entry.

In the following table, the Counts columns list the number of bonds (or angles) for which Mogul statistics could be retrieved, the number of bonds (or angles) that are observed in the model and the number of bonds (or angles) that are defined in the chemical component dictionary. The Link column lists molecule types, if any, to which the group is linked. The Z score for a bond length (or angle) is the number of standard deviations the observed value is removed from the expected value. A bond length (or angle) with $|Z| > 2$ is considered an outlier worth inspection. RMSZ is the root-mean-square of all Z scores of the bond lengths (or angles).

Mol	Type	Chain	Res	Link	Bond lengths			Bond angles		
					Counts	RMSZ	$\# Z > 2$	Counts	RMSZ	$\# Z > 2$
1	FME	A	1	1,4	8,9,10	2.40	2 (25%)	5,9,11	2.34	1 (20%)
1	FME	D	1	1,4	8,9,10	2.40	2 (25%)	5,9,11	2.34	1 (20%)
1	FME	G	1	1,4	8,9,10	2.39	2 (25%)	5,9,11	2.34	1 (20%)

In the following table, the Chirals column lists the number of chiral outliers, the number of chiral centers analysed, the number of these observed in the model and the number defined in the chemical component dictionary. Similar counts are reported in the Torsion and Rings columns. '-' means no outliers of that kind were identified.

Mol	Type	Chain	Res	Link	Chirals	Torsions	Rings
1	FME	A	1	1,4	-	1/6/9/11	0/0/0/0
1	FME	D	1	1,4	-	1/6/9/11	0/0/0/0
1	FME	G	1	1,4	-	1/6/9/11	0/0/0/0

All (6) bond length outliers are listed below:

Mol	Chain	Res	Type	Atoms	Z	Observed(Å)	Ideal(Å)
1	G	1	FME	CN-N	3.14	1.44	1.33
1	D	1	FME	CN-N	3.15	1.44	1.33
1	A	1	FME	CN-N	3.15	1.44	1.33
1	A	1	FME	O1-CN	5.82	1.41	1.22
1	G	1	FME	O1-CN	5.83	1.41	1.22
1	D	1	FME	O1-CN	5.83	1.41	1.22

All (3) bond angle outliers are listed below:

Mol	Chain	Res	Type	Atoms	Z	Observed(°)	Ideal(°)
1	A	1	FME	O1-CN-N	-4.73	117.57	124.80
1	G	1	FME	O1-CN-N	-4.72	117.58	124.80
1	D	1	FME	O1-CN-N	-4.72	117.58	124.80

There are no chirality outliers.

All (3) torsion outliers are listed below:

Mol	Chain	Res	Type	Atoms
1	A	1	FME	O1-CN-N-CA
1	D	1	FME	O1-CN-N-CA
1	G	1	FME	O1-CN-N-CA

There are no ring outliers.

3 monomers are involved in 9 short contacts:

Mol	Chain	Res	Type	Clashes	Symm-Clashes
1	A	1	FME	3	0
1	D	1	FME	3	0
1	G	1	FME	3	0

5.5 Carbohydrates ⓘ

There are no carbohydrates in this entry.

5.6 Ligand geometry

15 ligands are modelled in this entry.

In the following table, the Counts columns list the number of bonds (or angles) for which Mogul statistics could be retrieved, the number of bonds (or angles) that are observed in the model and the number of bonds (or angles) that are defined in the chemical component dictionary. The Link column lists molecule types, if any, to which the group is linked. The Z score for a bond length (or angle) is the number of standard deviations the observed value is removed from the expected value. A bond length (or angle) with $|Z| > 2$ is considered an outlier worth inspection. RMSZ is the root-mean-square of all Z scores of the bond lengths (or angles).

Mol	Type	Chain	Res	Link	Bond lengths			Bond angles		
					Counts	RMSZ	# $ Z > 2$	Counts	RMSZ	# $ Z > 2$
3	RG1	A	54	-	22,22,52	1.09	2 (9%)	29,31,67	1.10	3 (10%)
4	BCL	A	55	1	55,74,74	0.93	3 (5%)	55,115,115	2.44	16 (29%)
4	BCL	A	56	1	55,74,74	0.95	5 (9%)	55,115,115	2.24	14 (25%)
3	RG1	B	42	-	52,52,52	2.20	19 (36%)	63,67,67	1.67	11 (17%)
4	BCL	B	43	2	55,74,74	0.96	3 (5%)	55,115,115	2.37	15 (27%)
3	RG1	D	54	-	22,22,52	1.10	2 (9%)	29,31,67	1.10	3 (10%)
4	BCL	D	55	1	55,74,74	0.93	3 (5%)	55,115,115	2.44	16 (29%)
4	BCL	D	56	1	55,74,74	0.95	5 (9%)	55,115,115	2.24	14 (25%)
3	RG1	E	42	-	52,52,52	2.19	19 (36%)	63,67,67	1.67	11 (17%)
4	BCL	E	43	2	55,74,74	0.97	3 (5%)	55,115,115	2.37	15 (27%)
3	RG1	G	54	-	22,22,52	1.10	2 (9%)	29,31,67	1.10	3 (10%)
4	BCL	G	55	1	55,74,74	0.93	3 (5%)	55,115,115	2.44	16 (29%)
4	BCL	G	56	1	55,74,74	0.95	4 (7%)	55,115,115	2.24	14 (25%)
3	RG1	H	42	-	52,52,52	2.20	19 (36%)	63,67,67	1.67	11 (17%)
4	BCL	H	43	2	55,74,74	0.96	3 (5%)	55,115,115	2.37	15 (27%)

In the following table, the Chirals column lists the number of chiral outliers, the number of chiral centers analysed, the number of these observed in the model and the number defined in the chemical component dictionary. Similar counts are reported in the Torsion and Rings columns. '-' means no outliers of that kind were identified.

Mol	Type	Chain	Res	Link	Chirals	Torsions	Rings
3	RG1	A	54	-	1/1/7/32	0/16/36/71	0/1/1/1
4	BCL	A	55	1	1/1/21/25	0/37/137/137	0/0/9/9
4	BCL	A	56	1	-	0/37/137/137	0/0/9/9
3	RG1	B	42	-	1/1/13/32	0/51/71/71	0/1/1/1
4	BCL	B	43	2	2/2/21/25	0/37/137/137	0/0/9/9
3	RG1	D	54	-	1/1/7/32	0/16/36/71	0/1/1/1

Continued on next page...

Continued from previous page...

Mol	Type	Chain	Res	Link	Chirals	Torsions	Rings
4	BCL	D	55	1	1/1/21/25	0/37/137/137	0/0/9/9
4	BCL	D	56	1	-	0/37/137/137	0/0/9/9
3	RG1	E	42	-	1/1/13/32	0/51/71/71	0/1/1/1
4	BCL	E	43	2	2/2/21/25	0/37/137/137	0/0/9/9
3	RG1	G	54	-	1/1/7/32	0/16/36/71	0/1/1/1
4	BCL	G	55	1	1/1/21/25	0/37/137/137	0/0/9/9
4	BCL	G	56	1	-	0/37/137/137	0/0/9/9
3	RG1	H	42	-	1/1/13/32	0/51/71/71	0/1/1/1
4	BCL	H	43	2	2/2/21/25	0/37/137/137	0/0/9/9

All (95) bond length outliers are listed below:

Mol	Chain	Res	Type	Atoms	Z	Observed(Å)	Ideal(Å)
4	D	56	BCL	C3C-C4C	-2.94	1.47	1.51
4	A	56	BCL	C3C-C4C	-2.92	1.47	1.51
4	G	56	BCL	C3C-C4C	-2.90	1.47	1.51
3	G	54	RG1	C7-C6	-2.89	1.38	1.49
3	D	54	RG1	C7-C6	-2.89	1.38	1.49
3	A	54	RG1	C7-C6	-2.88	1.38	1.49
3	H	42	RG1	C12-C13	-2.63	1.40	1.45
3	B	42	RG1	C12-C13	-2.63	1.40	1.45
3	E	42	RG1	C12-C13	-2.62	1.40	1.45
3	H	42	RG1	C23-C22	-2.58	1.40	1.45
3	E	42	RG1	C23-C22	-2.58	1.40	1.45
3	B	42	RG1	C23-C22	-2.58	1.40	1.45
3	H	42	RG1	C19-C18	-2.45	1.40	1.45
3	B	42	RG1	C19-C18	-2.45	1.40	1.45
3	E	42	RG1	C19-C18	-2.45	1.40	1.45
4	D	56	BCL	CHD-C4C	-2.40	1.34	1.41
4	A	56	BCL	CHD-C4C	-2.39	1.34	1.41
4	G	56	BCL	CHD-C4C	-2.39	1.34	1.41
3	E	42	RG1	C8-C9	-2.31	1.40	1.45
3	B	42	RG1	C8-C9	-2.31	1.40	1.45
3	H	42	RG1	C8-C9	-2.30	1.40	1.45
3	E	42	RG1	O1'-C1	-2.15	1.43	1.46
3	B	42	RG1	O1'-C1	-2.13	1.43	1.46
3	H	42	RG1	O1'-C1	-2.12	1.43	1.46
4	G	56	BCL	C3B-C2B	-2.07	1.35	1.40
4	A	56	BCL	C3B-C2B	-2.07	1.35	1.40
4	E	43	BCL	CHD-C4C	-2.06	1.35	1.41
4	B	43	BCL	CHD-C4C	-2.06	1.35	1.41
4	H	43	BCL	CHD-C4C	-2.06	1.35	1.41

Continued on next page...

Continued from previous page...

Mol	Chain	Res	Type	Atoms	Z	Observed(Å)	Ideal(Å)
4	H	43	BCL	C3A-C2A	-2.05	1.48	1.54
4	D	56	BCL	C3B-C2B	-2.04	1.35	1.40
4	A	55	BCL	C3B-C2B	-2.03	1.35	1.40
4	G	55	BCL	C3B-C2B	-2.03	1.35	1.40
4	D	55	BCL	C3B-C2B	-2.03	1.35	1.40
4	E	43	BCL	C3A-C2A	-2.03	1.48	1.54
4	B	43	BCL	C3A-C2A	-2.01	1.48	1.54
3	B	42	RG1	C27-C26	2.02	1.50	1.45
3	E	42	RG1	C27-C26	2.02	1.50	1.45
3	H	42	RG1	C27-C26	2.02	1.50	1.45
4	A	56	BCL	CHC-C1C	2.03	1.36	1.33
4	D	56	BCL	CHC-C1C	2.04	1.36	1.33
4	A	56	BCL	O1D-CGD	2.10	1.26	1.21
4	G	56	BCL	O1D-CGD	2.10	1.26	1.21
4	D	56	BCL	O1D-CGD	2.10	1.26	1.21
3	E	42	RG1	C11-C12	2.11	1.39	1.34
3	H	42	RG1	C11-C12	2.13	1.39	1.34
3	B	42	RG1	C11-C12	2.13	1.39	1.34
4	D	55	BCL	C2-C3	2.26	1.38	1.32
4	G	55	BCL	C2-C3	2.26	1.38	1.32
4	A	55	BCL	C2-C3	2.27	1.38	1.32
3	E	42	RG1	C24-C23	2.33	1.40	1.34
3	H	42	RG1	C24-C23	2.35	1.40	1.34
3	B	42	RG1	C24-C23	2.36	1.40	1.34
3	B	42	RG1	C28-C29	2.39	1.50	1.43
3	E	42	RG1	C28-C29	2.39	1.50	1.43
3	H	42	RG1	C28-C29	2.39	1.50	1.43
3	E	42	RG1	C25-C26	2.52	1.39	1.35
3	B	42	RG1	C25-C26	2.53	1.39	1.35
3	H	42	RG1	C25-C26	2.54	1.39	1.35
4	D	55	BCL	CHC-C1C	2.55	1.37	1.33
3	E	42	RG1	C7-C8	2.57	1.40	1.34
3	B	42	RG1	C7-C8	2.57	1.40	1.34
3	H	42	RG1	C7-C8	2.58	1.40	1.34
4	A	55	BCL	CHC-C1C	2.58	1.37	1.33
3	G	54	RG1	C2-C1	2.60	1.56	1.53
4	G	55	BCL	CHC-C1C	2.60	1.37	1.33
3	D	54	RG1	C2-C1	2.62	1.56	1.53
3	A	54	RG1	C2-C1	2.62	1.56	1.53
3	H	42	RG1	C20-C19	2.76	1.41	1.34
3	E	42	RG1	C20-C19	2.76	1.41	1.34
3	B	42	RG1	C20-C19	2.77	1.41	1.34

Continued on next page...

Continued from previous page...

Mol	Chain	Res	Type	Atoms	Z	Observed(Å)	Ideal(Å)
3	E	42	RG1	C17-C18	2.94	1.39	1.35
3	B	42	RG1	C17-C18	2.97	1.39	1.35
3	H	42	RG1	C17-C18	3.00	1.39	1.35
3	B	42	RG1	C14-C13	3.26	1.40	1.35
3	H	42	RG1	C14-C13	3.27	1.40	1.35
3	H	42	RG1	C10-C9	3.31	1.40	1.35
3	B	42	RG1	C10-C9	3.31	1.40	1.35
3	E	42	RG1	C14-C13	3.31	1.40	1.35
3	E	42	RG1	C10-C9	3.33	1.40	1.35
4	H	43	BCL	CHC-C1C	3.54	1.38	1.33
4	B	43	BCL	CHC-C1C	3.56	1.38	1.33
4	E	43	BCL	CHC-C1C	3.58	1.38	1.33
3	B	42	RG1	C21-C22	3.66	1.40	1.35
3	H	42	RG1	C21-C22	3.66	1.40	1.35
3	E	42	RG1	C21-C22	3.66	1.40	1.35
3	E	42	RG1	C6-C5	5.58	1.40	1.34
3	B	42	RG1	C6-C5	5.61	1.40	1.34
3	H	42	RG1	C6-C5	5.64	1.40	1.34
3	E	42	RG1	C2-C1	5.88	1.60	1.53
3	H	42	RG1	C2-C1	5.88	1.60	1.53
3	B	42	RG1	C2-C1	5.91	1.60	1.53
3	H	42	RG1	C28-C27	7.18	1.51	1.34
3	E	42	RG1	C28-C27	7.19	1.51	1.34
3	B	42	RG1	C28-C27	7.20	1.51	1.34

All (177) bond angle outliers are listed below:

Mol	Chain	Res	Type	Atoms	Z	Observed(°)	Ideal(°)
3	E	42	RG1	C28-C27-C26	-5.09	111.41	126.34
3	B	42	RG1	C28-C27-C26	-5.09	111.42	126.34
3	H	42	RG1	C28-C27-C26	-5.08	111.45	126.34
4	B	43	BCL	O1D-CGD-CBD	-4.82	117.14	124.64
4	H	43	BCL	O1D-CGD-CBD	-4.82	117.15	124.64
4	E	43	BCL	O1D-CGD-CBD	-4.81	117.15	124.64
4	A	55	BCL	O1D-CGD-CBD	-4.66	117.38	124.64
4	D	55	BCL	O1D-CGD-CBD	-4.66	117.39	124.64
4	G	55	BCL	O1D-CGD-CBD	-4.66	117.39	124.64
3	H	42	RG1	C16-C17-C18	-4.55	120.60	127.22
3	B	42	RG1	C16-C17-C18	-4.53	120.63	127.22
4	D	55	BCL	CHA-C1A-NA	-4.52	114.90	126.21
4	A	55	BCL	CHA-C1A-NA	-4.52	114.90	126.21
3	E	42	RG1	C16-C17-C18	-4.52	120.65	127.22

Continued on next page...

Continued from previous page...

Mol	Chain	Res	Type	Atoms	Z	Observed(°)	Ideal(°)
4	G	55	BCL	CHA-C1A-NA	-4.52	114.91	126.21
4	G	56	BCL	CHA-C1A-NA	-4.43	115.14	126.21
4	D	56	BCL	CHA-C1A-NA	-4.43	115.14	126.21
4	H	43	BCL	CHA-C1A-NA	-4.42	115.16	126.21
4	E	43	BCL	CHA-C1A-NA	-4.41	115.18	126.21
4	B	43	BCL	CHA-C1A-NA	-4.41	115.18	126.21
4	A	56	BCL	CHA-C1A-NA	-4.41	115.19	126.21
3	B	42	RG1	C29-C28-C27	-4.38	109.57	123.11
3	E	42	RG1	C29-C28-C27	-4.38	109.58	123.11
3	H	42	RG1	C29-C28-C27	-4.38	109.60	123.11
4	D	56	BCL	O1D-CGD-CBD	-4.36	117.86	124.64
4	A	56	BCL	O1D-CGD-CBD	-4.35	117.87	124.64
4	G	56	BCL	O1D-CGD-CBD	-4.35	117.87	124.64
3	H	42	RG1	C7-C6-C5	-4.23	122.50	127.69
3	B	42	RG1	C7-C6-C5	-4.22	122.50	127.69
3	E	42	RG1	C7-C6-C5	-4.20	122.54	127.69
4	H	43	BCL	OBD-CAD-CBD	-4.00	119.90	125.94
4	B	43	BCL	OBD-CAD-CBD	-4.00	119.91	125.94
4	E	43	BCL	OBD-CAD-CBD	-3.99	119.91	125.94
4	D	56	BCL	OBD-CAD-CBD	-3.70	120.36	125.94
4	A	56	BCL	OBD-CAD-CBD	-3.69	120.37	125.94
4	A	55	BCL	OBD-CAD-CBD	-3.68	120.38	125.94
4	G	55	BCL	OBD-CAD-CBD	-3.68	120.38	125.94
4	G	56	BCL	OBD-CAD-CBD	-3.67	120.39	125.94
4	D	55	BCL	OBD-CAD-CBD	-3.67	120.40	125.94
4	D	56	BCL	OBB-CAB-CBB	-3.59	111.56	120.14
4	A	56	BCL	OBB-CAB-CBB	-3.58	111.58	120.14
4	G	56	BCL	OBB-CAB-CBB	-3.58	111.59	120.14
3	H	42	RG1	C24-C25-C26	-3.25	122.49	127.22
3	B	42	RG1	C24-C25-C26	-3.24	122.51	127.22
3	E	42	RG1	C24-C25-C26	-3.22	122.54	127.22
4	D	55	BCL	OBB-CAB-CBB	-3.18	112.53	120.14
4	A	55	BCL	OBB-CAB-CBB	-3.17	112.56	120.14
4	E	43	BCL	OBB-CAB-CBB	-3.17	112.56	120.14
4	G	55	BCL	OBB-CAB-CBB	-3.16	112.58	120.14
4	B	43	BCL	OBB-CAB-CBB	-3.16	112.58	120.14
4	H	43	BCL	OBB-CAB-CBB	-3.15	112.62	120.14
4	D	55	BCL	C9-C8-C10	-2.96	100.05	111.10
4	A	55	BCL	C9-C8-C10	-2.95	100.08	111.10
4	A	55	BCL	C4-C3-C2	-2.95	117.87	123.58
4	G	55	BCL	C9-C8-C10	-2.95	100.09	111.10
4	D	55	BCL	C4-C3-C2	-2.93	117.91	123.58

Continued on next page...

Continued from previous page...

Mol	Chain	Res	Type	Atoms	Z	Observed(°)	Ideal(°)
4	G	55	BCL	C4-C3-C2	-2.93	117.92	123.58
3	B	42	RG1	C20-C21-C22	-2.92	122.97	127.22
4	G	55	BCL	CBB-CAB-C3B	-2.92	111.58	120.27
3	H	42	RG1	C20-C21-C22	-2.92	122.98	127.22
4	A	55	BCL	CBB-CAB-C3B	-2.91	111.60	120.27
4	D	55	BCL	CBB-CAB-C3B	-2.91	111.60	120.27
3	E	42	RG1	C20-C21-C22	-2.91	122.99	127.22
3	H	42	RG1	C11-C10-C9	-2.79	123.16	127.22
3	B	42	RG1	C11-C10-C9	-2.79	123.16	127.22
3	E	42	RG1	C11-C10-C9	-2.79	123.17	127.22
4	E	43	BCL	CBB-CAB-C3B	-2.64	112.42	120.27
4	B	43	BCL	CBB-CAB-C3B	-2.63	112.45	120.27
4	H	43	BCL	CBB-CAB-C3B	-2.63	112.45	120.27
3	H	42	RG1	CM4-C9-C10	-2.57	119.15	122.89
3	B	42	RG1	CM4-C9-C10	-2.57	119.16	122.89
3	E	42	RG1	CM4-C9-C10	-2.56	119.16	122.89
4	B	43	BCL	C4-C3-C2	-2.44	118.86	123.58
4	H	43	BCL	C4-C3-C2	-2.43	118.87	123.58
4	E	43	BCL	C4-C3-C2	-2.43	118.88	123.58
3	A	54	RG1	C7-C6-C5	-2.42	120.38	126.44
3	D	54	RG1	C7-C6-C5	-2.41	120.41	126.44
3	G	54	RG1	C7-C6-C5	-2.40	120.42	126.44
3	G	54	RG1	CM3-C5-C6	-2.28	119.50	123.86
3	D	54	RG1	CM3-C5-C6	-2.27	119.50	123.86
3	A	54	RG1	CM3-C5-C6	-2.26	119.52	123.86
3	E	42	RG1	C16-C15-C14	-2.25	118.38	123.23
3	B	42	RG1	C16-C15-C14	-2.24	118.40	123.23
3	H	42	RG1	C16-C15-C14	-2.24	118.40	123.23
4	D	56	BCL	C9-C8-C10	-2.20	102.87	111.10
4	A	56	BCL	C9-C8-C10	-2.19	102.91	111.10
4	G	56	BCL	C9-C8-C10	-2.19	102.93	111.10
3	B	42	RG1	CM6-C18-C17	-2.16	119.75	122.89
3	H	42	RG1	CM6-C18-C17	-2.16	119.75	122.89
3	E	42	RG1	CM6-C18-C17	-2.15	119.75	122.89
3	E	42	RG1	C15-C14-C13	-2.08	124.19	127.22
3	B	42	RG1	C15-C14-C13	-2.06	124.22	127.22
3	H	42	RG1	C15-C14-C13	-2.06	124.23	127.22
4	E	43	BCL	CBA-CAA-C2A	-2.06	108.65	113.96
4	H	43	BCL	CBA-CAA-C2A	-2.06	108.66	113.96
4	B	43	BCL	CBA-CAA-C2A	-2.05	108.67	113.96
4	D	56	BCL	C6-C5-C3	-2.03	109.12	112.76
4	G	56	BCL	C6-C5-C3	-2.03	109.12	112.76

Continued on next page...

Continued from previous page...

Mol	Chain	Res	Type	Atoms	Z	Observed(°)	Ideal(°)
4	A	56	BCL	C6-C5-C3	-2.02	109.13	112.76
4	A	56	BCL	O2D-CGD-O1D	-2.01	119.53	123.77
4	G	56	BCL	O2D-CGD-O1D	-2.01	119.54	123.77
4	D	56	BCL	O2D-CGD-O1D	-2.01	119.54	123.77
4	E	43	BCL	C3C-C2C-C1C	2.09	103.98	101.84
4	H	43	BCL	C3C-C2C-C1C	2.10	103.99	101.84
4	B	43	BCL	C3C-C2C-C1C	2.11	104.00	101.84
4	G	56	BCL	OBD-CAD-C3D	2.23	132.03	128.09
4	A	56	BCL	OBD-CAD-C3D	2.23	132.04	128.09
4	D	56	BCL	OBD-CAD-C3D	2.25	132.06	128.09
4	G	55	BCL	OBD-CAD-C3D	2.32	132.20	128.09
4	D	55	BCL	OBD-CAD-C3D	2.33	132.20	128.09
4	A	55	BCL	OBD-CAD-C3D	2.33	132.21	128.09
4	A	55	BCL	CAC-C3C-C4C	2.60	118.36	112.58
4	G	55	BCL	CAC-C3C-C4C	2.61	118.37	112.58
4	G	55	BCL	C3C-C2C-C1C	2.61	104.52	101.84
4	D	55	BCL	CAC-C3C-C4C	2.61	118.39	112.58
4	E	43	BCL	O2A-CGA-CBA	2.61	119.90	111.85
4	B	43	BCL	O2A-CGA-CBA	2.62	119.92	111.85
4	A	55	BCL	C3C-C2C-C1C	2.62	104.53	101.84
4	H	43	BCL	O2A-CGA-CBA	2.63	119.94	111.85
4	D	55	BCL	C3C-C2C-C1C	2.65	104.55	101.84
4	B	43	BCL	OBD-CAD-C3D	2.65	132.77	128.09
4	E	43	BCL	OBD-CAD-C3D	2.65	132.78	128.09
4	H	43	BCL	OBD-CAD-C3D	2.66	132.79	128.09
4	G	55	BCL	C4-C3-C5	2.70	119.48	115.37
4	D	55	BCL	C4-C3-C5	2.70	119.48	115.37
4	A	55	BCL	C4-C3-C5	2.70	119.49	115.37
4	H	43	BCL	C4-C3-C5	2.75	119.56	115.37
4	E	43	BCL	C4-C3-C5	2.75	119.56	115.37
4	B	43	BCL	C4-C3-C5	2.76	119.57	115.37
4	A	56	BCL	C2A-C3A-C4A	2.78	104.69	101.84
4	G	56	BCL	C2A-C3A-C4A	2.81	104.72	101.84
4	G	56	BCL	C4-C3-C5	2.82	119.67	115.37
4	D	56	BCL	C2A-C3A-C4A	2.83	104.74	101.84
4	A	56	BCL	C4-C3-C5	2.84	119.70	115.37
4	D	56	BCL	C4-C3-C5	2.86	119.73	115.37
3	G	54	RG1	CM3-C5-C4	2.88	119.76	115.37
3	A	54	RG1	CM3-C5-C4	2.89	119.78	115.37
3	D	54	RG1	CM3-C5-C4	2.90	119.79	115.37
4	G	56	BCL	O2A-CGA-CBA	3.16	121.57	111.85
4	D	56	BCL	O2A-CGA-CBA	3.16	121.59	111.85

Continued on next page...

Continued from previous page...

Mol	Chain	Res	Type	Atoms	Z	Observed(°)	Ideal(°)
4	A	56	BCL	O2A-CGA-CBA	3.17	121.59	111.85
4	B	43	BCL	C2A-C3A-C4A	3.31	105.23	101.84
4	H	43	BCL	C2A-C3A-C4A	3.33	105.25	101.84
4	D	55	BCL	O2A-CGA-CBA	3.34	122.12	111.85
4	A	55	BCL	O2A-CGA-CBA	3.34	122.13	111.85
4	E	43	BCL	C2A-C3A-C4A	3.34	105.27	101.84
4	G	55	BCL	O2A-CGA-CBA	3.35	122.16	111.85
4	D	55	BCL	C2A-C3A-C4A	3.81	105.74	101.84
4	G	55	BCL	C2A-C3A-C4A	3.81	105.74	101.84
4	A	55	BCL	C2A-C3A-C4A	3.81	105.75	101.84
4	A	56	BCL	C2A-C1A-CHA	5.79	133.13	123.80
4	D	56	BCL	C2A-C1A-CHA	5.81	133.16	123.80
4	G	56	BCL	C2A-C1A-CHA	5.82	133.17	123.80
4	B	43	BCL	C2A-C1A-CHA	5.82	133.17	123.80
4	E	43	BCL	C2A-C1A-CHA	5.83	133.19	123.80
4	H	43	BCL	C2A-C1A-CHA	5.84	133.20	123.80
4	A	56	BCL	OBB-CAB-C3B	5.84	131.30	119.97
4	D	56	BCL	OBB-CAB-C3B	5.84	131.30	119.97
4	G	56	BCL	OBB-CAB-C3B	5.85	131.31	119.97
4	A	55	BCL	C2A-C1A-CHA	6.00	133.47	123.80
4	D	55	BCL	C2A-C1A-CHA	6.00	133.47	123.80
4	G	55	BCL	C2A-C1A-CHA	6.02	133.50	123.80
4	G	55	BCL	O2D-CGD-CBD	7.48	122.01	111.22
4	D	55	BCL	O2D-CGD-CBD	7.48	122.01	111.22
4	A	55	BCL	O2D-CGD-CBD	7.49	122.03	111.22
4	H	43	BCL	OBB-CAB-C3B	7.65	134.81	119.97
4	B	43	BCL	OBB-CAB-C3B	7.67	134.86	119.97
4	E	43	BCL	OBB-CAB-C3B	7.69	134.90	119.97
4	G	56	BCL	O2D-CGD-CBD	7.88	122.59	111.22
4	D	56	BCL	O2D-CGD-CBD	7.88	122.59	111.22
4	A	56	BCL	O2D-CGD-CBD	7.88	122.60	111.22
4	E	43	BCL	O2D-CGD-CBD	8.17	123.00	111.22
4	G	55	BCL	OBB-CAB-C3B	8.17	135.82	119.97
4	A	55	BCL	OBB-CAB-C3B	8.17	135.82	119.97
4	B	43	BCL	O2D-CGD-CBD	8.17	123.01	111.22
4	H	43	BCL	O2D-CGD-CBD	8.17	123.01	111.22
4	D	55	BCL	OBB-CAB-C3B	8.18	135.84	119.97

All (15) chirality outliers are listed below:

Mol	Chain	Res	Type	Atom
4	A	55	BCL	C13

Continued on next page...

Continued from previous page...

Mol	Chain	Res	Type	Atom
3	A	54	RG1	C1'
3	D	54	RG1	C1'
3	G	54	RG1	C1'
4	D	55	BCL	C13
4	B	43	BCL	C8
4	B	43	BCL	C13
3	B	42	RG1	C1'
4	G	55	BCL	C13
4	H	43	BCL	C8
4	H	43	BCL	C13
3	H	42	RG1	C1'
3	E	42	RG1	C1'
4	E	43	BCL	C8
4	E	43	BCL	C13

There are no torsion outliers.

There are no ring outliers.

15 monomers are involved in 60 short contacts:

Mol	Chain	Res	Type	Clashes	Symm-Clashes
3	A	54	RG1	3	0
4	A	55	BCL	6	0
4	A	56	BCL	5	0
3	B	42	RG1	1	0
4	B	43	BCL	7	0
3	D	54	RG1	5	0
4	D	55	BCL	7	0
4	D	56	BCL	6	0
3	E	42	RG1	1	0
4	E	43	BCL	7	0
3	G	54	RG1	5	0
4	G	55	BCL	8	0
4	G	56	BCL	4	0
3	H	42	RG1	1	0
4	H	43	BCL	5	0

5.7 Other polymers

There are no such residues in this entry.

5.8 Polymer linkage issues ⓘ

There are no chain breaks in this entry.

6 Fit of model and data [i](#)

6.1 Protein, DNA and RNA chains [i](#)

In the following table, the column labelled ‘#RSRZ> 2’ contains the number (and percentage) of RSRZ outliers, followed by percent RSRZ outliers for the chain as percentile scores relative to all X-ray entries and entries of similar resolution. The OWAB column contains the minimum, median, 95th percentile and maximum values of the occupancy-weighted average B-factor per residue. The column labelled ‘Q< 0.9’ lists the number of (and percentage) of residues with an average occupancy less than 0.9.

Mol	Chain	Analysed	<RSRZ>	#RSRZ>2	OWAB(Å ²)	Q<0.9
1	A	48/53 (90%)	-0.89	2 (4%) 40 45	8, 15, 41, 131	0
1	D	48/53 (90%)	-0.85	2 (4%) 40 45	8, 15, 41, 131	0
1	G	48/53 (90%)	-0.91	2 (4%) 40 45	8, 15, 41, 131	0
2	B	41/41 (100%)	-0.21	2 (4%) 33 38	19, 31, 68, 93	0
2	E	41/41 (100%)	-0.33	2 (4%) 33 38	19, 31, 68, 93	0
2	H	41/41 (100%)	-0.24	2 (4%) 33 38	19, 31, 68, 93	0
All	All	267/282 (94%)	-0.60	12 (4%) 37 42	8, 24, 75, 131	0

All (12) RSRZ outliers are listed below:

Mol	Chain	Res	Type	RSRZ
1	D	49	VAL	8.4
1	G	49	VAL	6.3
1	A	49	VAL	6.0
1	A	48	GLY	5.1
1	D	48	GLY	4.8
1	G	48	GLY	3.4
2	H	41	HIS	3.2
2	B	1	ALA	3.1
2	E	41	HIS	3.1
2	B	41	HIS	3.0
2	E	1	ALA	3.0
2	H	1	ALA	2.5

6.2 Non-standard residues in protein, DNA, RNA chains [i](#)

In the following table, the Atoms column lists the number of modelled atoms in the group and the number defined in the chemical component dictionary. LLDF column lists the quality of electron density of the group with respect to its neighbouring residues in protein, DNA or RNA chains.

The B-factors column lists the minimum, median, 95th percentile and maximum values of B factors of atoms in the group. The column labelled 'Q< 0.9' lists the number of atoms with occupancy less than 0.9.

Mol	Type	Chain	Res	Atoms	RSCC	RSR	LLDF	B-factors(Å ²)	Q<0.9
1	FME	D	1	10/11	0.89	0.18	-	22,34,48,52	0
1	FME	G	1	10/11	0.88	0.17	-	22,34,48,52	0
1	FME	A	1	10/11	0.84	0.21	-	22,34,48,52	0

6.3 Carbohydrates [i](#)

There are no carbohydrates in this entry.

6.4 Ligands [i](#)

In the following table, the Atoms column lists the number of modelled atoms in the group and the number defined in the chemical component dictionary. LLDF column lists the quality of electron density of the group with respect to its neighbouring residues in protein, DNA or RNA chains. The B-factors column lists the minimum, median, 95th percentile and maximum values of B factors of atoms in the group. The column labelled 'Q< 0.9' lists the number of atoms with occupancy less than 0.9.

Mol	Type	Chain	Res	Atoms	RSCC	RSR	LLDF	B-factors(Å ²)	Q<0.9
3	RG1	A	54	22/52	0.79	0.35	6.72	28,54,62,63	12
3	RG1	D	54	22/52	0.82	0.33	6.28	28,54,62,63	12
3	RG1	G	54	22/52	0.80	0.35	6.04	28,54,62,63	12
4	BCL	G	56	66/66	0.93	0.13	0.85	14,24,68,75	0
4	BCL	D	56	66/66	0.93	0.13	0.80	14,24,68,75	0
4	BCL	A	56	66/66	0.93	0.13	0.77	14,24,68,75	0
4	BCL	B	43	66/66	0.96	0.10	0.57	4,15,41,49	0
4	BCL	G	55	66/66	0.97	0.09	0.55	3,12,27,35	0
3	RG1	E	42	52/52	0.95	0.12	0.46	3,16,39,43	12
4	BCL	A	55	66/66	0.97	0.09	0.43	3,12,27,35	0
3	RG1	H	42	52/52	0.94	0.12	0.41	3,16,39,43	12
4	BCL	E	43	66/66	0.96	0.10	0.29	4,15,41,49	0
3	RG1	B	42	52/52	0.95	0.11	0.24	3,16,39,43	12
4	BCL	D	55	66/66	0.97	0.08	0.13	3,12,27,35	0
4	BCL	H	43	66/66	0.96	0.09	0.12	4,15,41,49	0

6.5 Other polymers [i](#)

There are no such residues in this entry.