



wwPDB X-ray Structure Validation Summary Report ⓘ

Feb 1, 2016 – 06:18 PM GMT

PDB ID : 4L39
Title : Crystal structure of GH3.12 from Arabidopsis thaliana in complex with AM-PCPP and salicylate
Authors : Zubieta, C.; Jez, J.M.; Brown, E.; Marcellin, R.; Kapp, U.; Round, A.; Westfall, C.
Deposited on : 2013-06-05
Resolution : 2.81 Å(reported)

This is a wwPDB X-ray Structure Validation Summary Report for a publicly released PDB entry.
We welcome your comments at validation@mail.wwpdb.org
A user guide is available at
<http://wwpdb.org/validation/2016/XrayValidationReportHelp>
with specific help available everywhere you see the ⓘ symbol.

The following versions of software and data (see [references ⓘ](#)) were used in the production of this report:

MolProbity : 4.02b-467
Mogul : 1.7 (RC4), CSD as536be (2015)
Xtriage (Phenix) : 1.9-1692
EDS : rb-20026688
Percentile statistics : 20151230.v01 (using entries in the PDB archive December 30th 2015)
Refmac : 5.8.0135
CCP4 : 6.5.0
Ideal geometry (proteins) : Engh & Huber (2001)
Ideal geometry (DNA, RNA) : Parkinson et al. (1996)
Validation Pipeline (wwPDB-VP) : trunk26865

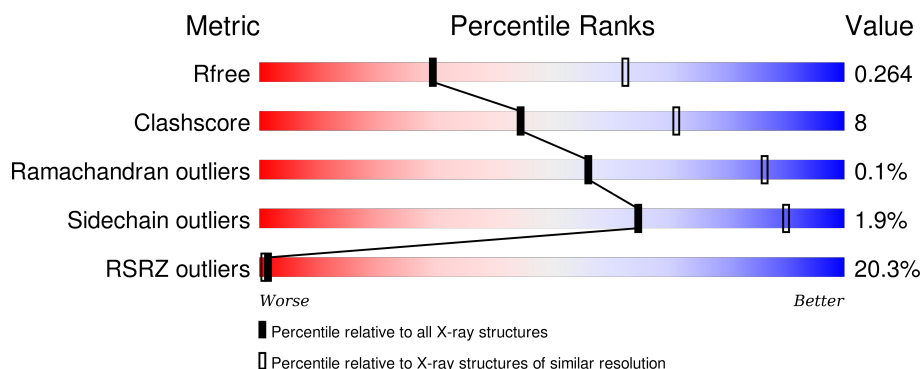
1 Overall quality at a glance

The following experimental techniques were used to determine the structure:

X-RAY DIFFRACTION

The reported resolution of this entry is 2.81 Å.

Percentile scores (ranging between 0-100) for global validation metrics of the entry are shown in the following graphic. The table shows the number of entries on which the scores are based.



Metric	Whole archive (#Entries)	Similar resolution (#Entries, resolution range(Å))
R_{free}	91344	2676 (2.84-2.80)
Clashscore	102246	3124 (2.84-2.80)
Ramachandran outliers	100387	3072 (2.84-2.80)
Sidechain outliers	100360	3074 (2.84-2.80)
RSRZ outliers	91569	2690 (2.84-2.80)

The table below summarises the geometric issues observed across the polymeric chains and their fit to the electron density. The red, orange, yellow and green segments on the lower bar indicate the fraction of residues that contain outliers for ≥ 3 , 2, 1 and 0 types of geometric quality criteria. A grey segment represents the fraction of residues that are not modelled. The numeric value for each fraction is indicated below the corresponding segment, with a dot representing fractions $\leq 5\%$. The upper red bar (where present) indicates the fraction of residues that have poor fit to the electron density. The numeric value is given above the bar.

Mol	Chain	Length	Quality of chain
1	A	581	
1	B	581	

The following table lists non-polymeric compounds, carbohydrate monomers and non-standard residues in protein, DNA, RNA chains that are outliers for geometric or electron-density-fit criteria:

Mol	Type	Chain	Res	Chirality	Geometry	Clashes	Electron density
3	SAL	A	602	-	-	-	X
3	SAL	B	601	-	-	-	X

2 Entry composition

There are 5 unique types of molecules in this entry. The entry contains 8660 atoms, of which 0 are hydrogens and 0 are deuteriums.

In the tables below, the ZeroOcc column contains the number of atoms modelled with zero occupancy, the AltConf column contains the number of residues with at least one atom in alternate conformation and the Trace column contains the number of residues modelled with at most 2 atoms.

- Molecule 1 is a protein called 4-substituted benzoates-glutamate ligase GH3.12.

Mol	Chain	Residues	Atoms					ZeroOcc	AltConf	Trace
1	A	541	Total	C	N	O	S	0	7	0
			4153	2637	681	807	28			
1	B	542	Total	C	N	O	S	0	6	0
			4211	2672	681	831	27			

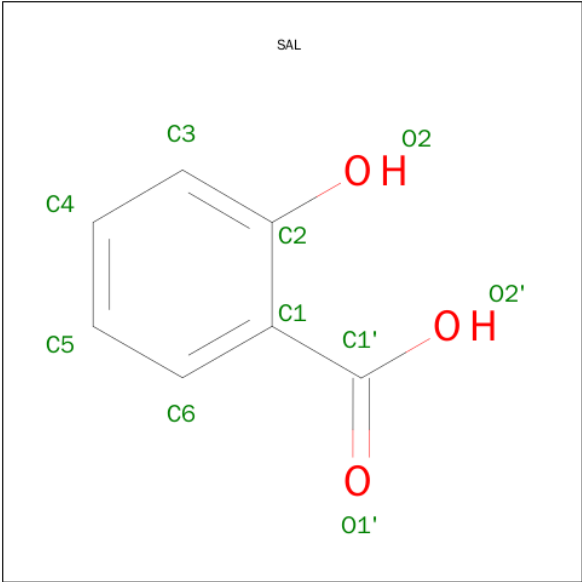
There are 12 discrepancies between the modelled and reference sequences:

Chain	Residue	Modelled	Actual	Comment	Reference
A	-5	GLY	-	EXPRESSION TAG	UNP Q9LYU4
A	-4	SER	-	EXPRESSION TAG	UNP Q9LYU4
A	-3	HIS	-	EXPRESSION TAG	UNP Q9LYU4
A	-2	MET	-	EXPRESSION TAG	UNP Q9LYU4
A	-1	ALA	-	EXPRESSION TAG	UNP Q9LYU4
A	0	SER	-	EXPRESSION TAG	UNP Q9LYU4
B	-5	GLY	-	EXPRESSION TAG	UNP Q9LYU4
B	-4	SER	-	EXPRESSION TAG	UNP Q9LYU4
B	-3	HIS	-	EXPRESSION TAG	UNP Q9LYU4
B	-2	MET	-	EXPRESSION TAG	UNP Q9LYU4
B	-1	ALA	-	EXPRESSION TAG	UNP Q9LYU4
B	0	SER	-	EXPRESSION TAG	UNP Q9LYU4

- Molecule 2 is MAGNESIUM ION (three-letter code: MG) (formula: Mg).

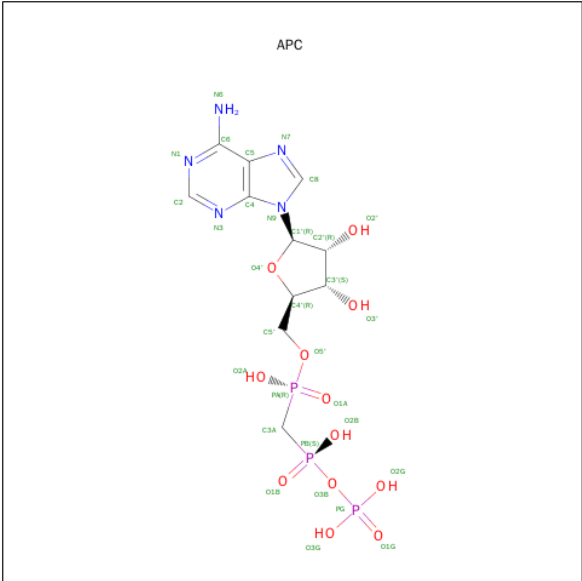
Mol	Chain	Residues	Atoms		ZeroOcc	AltConf
2	A	1	Total	Mg	0	0
			1	1		

- Molecule 3 is 2-HYDROXYBENZOIC ACID (three-letter code: SAL) (formula: C₇H₆O₃).



Mol	Chain	Residues	Atoms			ZeroOcc	AltConf
3	A	1	Total	C	O	0	0
			10	7	3		
3	B	1	Total	C	O	0	0
			10	7	3		

- Molecule 4 is DIPHOSPHOMETHYLPHOSPHONIC ACID ADENOSYL ESTER (three-letter code: APC) (formula: C₁₁H₁₈N₅O₁₂P₃).



Mol	Chain	Residues	Atoms					ZeroOcc	AltConf
4	A	1	Total	C	N	O	P	0	0
			31	11	5	12	3		

Continued on next page...

Continued from previous page...

Mol	Chain	Residues	Atoms					ZeroOcc	AltConf
4	B	1	Total	C	N	O	P	0	0
			31	11	5	12	3		

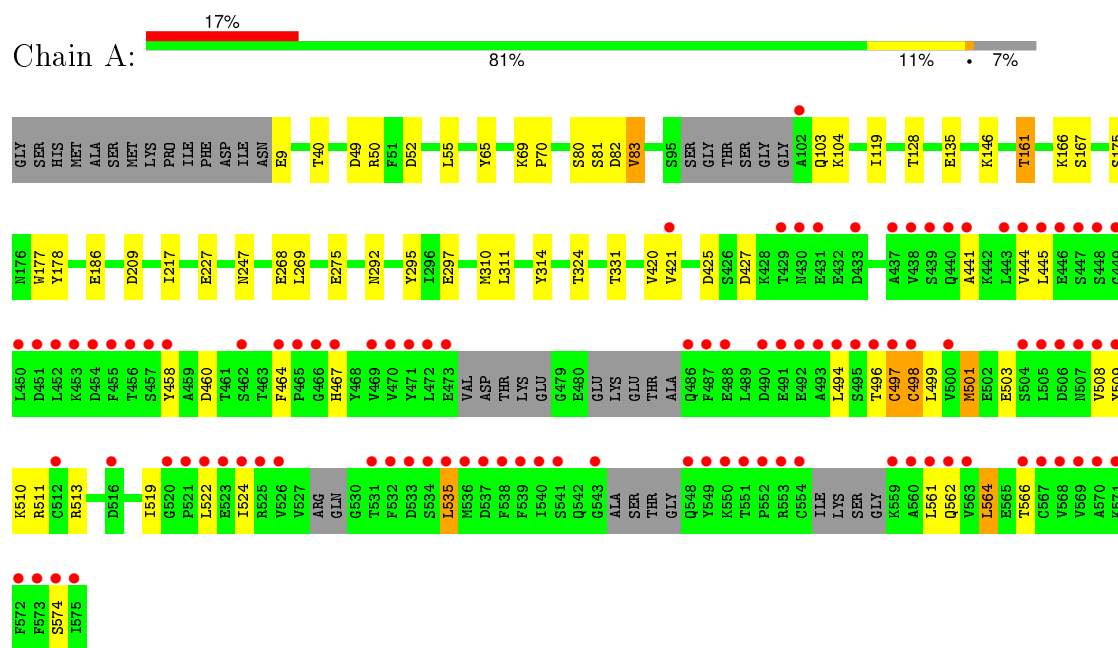
- Molecule 5 is water.

Mol	Chain	Residues	Atoms		ZeroOcc	AltConf
5	A	106	Total	O	0	0
			106	106		
5	B	107	Total	O	0	0
			107	107		

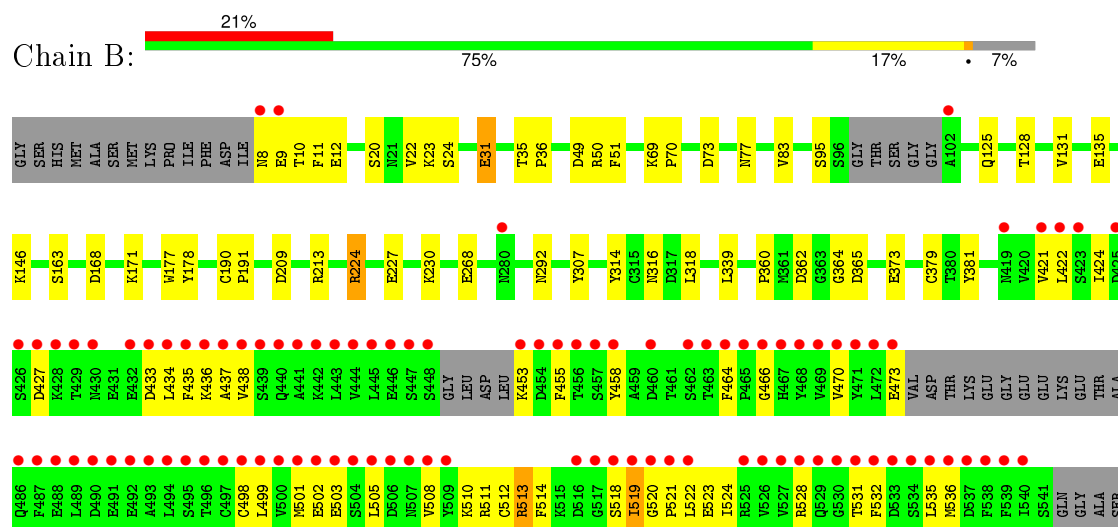
3 Residue-property plots

These plots are drawn for all protein, RNA and DNA chains in the entry. The first graphic for a chain summarises the proportions of errors displayed in the second graphic. The second graphic shows the sequence view annotated by issues in geometry and electron density. Residues are color-coded according to the number of geometric quality criteria for which they contain at least one outlier: green = 0, yellow = 1, orange = 2 and red = 3 or more. A red dot above a residue indicates a poor fit to the electron density ($RSRZ > 2$). Stretches of 2 or more consecutive residues without any outlier are shown as a green connector. Residues present in the sample, but not in the model, are shown in grey.

- Molecule 1: 4-substituted benzoates-glutamate ligase GH3.12



- Molecule 1: 4-substituted benzoates-glutamate ligase GH3.12



T546	G547	Q548	Y549	K550	T551	P552	R553	C554	I555	K556	S557	G558	K559	A560	L561	Q562	V563	L564	E565	T566	C567	V568	V569	A570	K571	F572	F573	S574	IIE
------	------	------	------	------	------	------	------	------	------	------	------	------	------	------	------	------	------	------	------	------	------	------	------	------	------	------	------	------	-----

4 Data and refinement statistics

Property	Value	Source
Space group	P 21 21 21	Depositor
Cell constants a, b, c, α , β , γ	62.36Å 114.09Å 157.98Å 90.00° 90.00° 90.00°	Depositor
Resolution (Å)	58.00 – 2.81 58.00 – 2.81	Depositor EDS
% Data completeness (in resolution range)	99.8 (58.00-2.81) 99.8 (58.00-2.81)	Depositor EDS
R_{merge}	0.26	Depositor
R_{sym}	0.26	Depositor
$\langle I/\sigma(I) \rangle$ ¹	2.45 (at 2.81Å)	Xtriage
Refinement program	PHENIX (phenix.refine: dev_1391)	Depositor
R, R_{free}	0.198 , 0.267 0.198 , 0.264	Depositor DCC
R_{free} test set	1418 reflections (5.30%)	DCC
Wilson B-factor (Å ²)	29.4	Xtriage
Anisotropy	0.090	Xtriage
Bulk solvent k_{sol} (e/Å ³), B_{sol} (Å ²)	0.30 , 54.7	EDS
Estimated twinning fraction	No twinning to report.	Xtriage
L-test for twinning ²	$\langle L \rangle = 0.47$, $\langle L^2 \rangle = 0.30$	Xtriage
Outliers	1 of 28176 reflections (0.004%)	Xtriage
F_o, F_c correlation	0.94	EDS
Total number of atoms	8660	wwPDB-VP
Average B, all atoms (Å ²)	45.0	wwPDB-VP

Xtriage's analysis on translational NCS is as follows: *The analyses of the Patterson function reveals a significant off-origin peak that is 49.16 % of the origin peak, indicating pseudo translational symmetry. The chance of finding a peak of this or larger height randomly in a structure without pseudo translational symmetry is equal to 7.7619e-05. The detected translational NCS is most likely also responsible for the elevated intensity ratio.*

¹ Intensities estimated from amplitudes.

² Theoretical values of $\langle |L| \rangle$, $\langle L^2 \rangle$ for acentric reflections are 0.5, 0.375 respectively for untwinned datasets, and 0.333, 0.2 for perfectly twinned datasets.

5 Model quality

5.1 Standard geometry

Bond lengths and bond angles in the following residue types are not validated in this section: APC, MG, SAL

The Z score for a bond length (or angle) is the number of standard deviations the observed value is removed from the expected value. A bond length (or angle) with $|Z| > 5$ is considered an outlier worth inspection. RMSZ is the root-mean-square of all Z scores of the bond lengths (or angles).

Mol	Chain	Bond lengths		Bond angles	
		RMSZ	$\# Z > 5$	RMSZ	$\# Z > 5$
1	A	0.78	2/4251 (0.0%)	0.77	1/5770 (0.0%)
1	B	0.78	0/4309	0.78	2/5850 (0.0%)
All	All	0.78	2/8560 (0.0%)	0.77	3/11620 (0.0%)

Chiral center outliers are detected by calculating the chiral volume of a chiral center and verifying if the center is modelled as a planar moiety or with the opposite hand. A planarity outlier is detected by checking planarity of atoms in a peptide group, atoms in a mainchain group or atoms of a sidechain that are expected to be planar.

Mol	Chain	#Chirality outliers	#Planarity outliers
1	B	0	1

All (2) bond length outliers are listed below:

Mol	Chain	Res	Type	Atoms	Z	Observed(Å)	Ideal(Å)
1	A	497	CYS	CB-SG	-6.99	1.70	1.82
1	A	275	GLU	CB-CG	-6.16	1.40	1.52

All (3) bond angle outliers are listed below:

Mol	Chain	Res	Type	Atoms	Z	Observed(°)	Ideal(°)
1	B	513	ARG	NE-CZ-NH2	-5.84	117.38	120.30
1	A	564	LEU	CB-CG-CD2	-5.33	101.94	111.00
1	B	224	ARG	NE-CZ-NH1	5.07	122.83	120.30

There are no chirality outliers.

All (1) planarity outliers are listed below:

Mol	Chain	Res	Type	Group
1	B	520	GLY	Peptide

5.2 Too-close contacts [i](#)

In the following table, the Non-H and H(model) columns list the number of non-hydrogen atoms and hydrogen atoms in the chain respectively. The H(added) column lists the number of hydrogen atoms added and optimized by MolProbity. The Clashes column lists the number of clashes within the asymmetric unit, whereas Symm-Clashes lists symmetry related clashes.

Mol	Chain	Non-H	H(model)	H(added)	Clashes	Symm-Clashes
1	A	4153	0	3910	51	0
1	B	4211	0	4003	79	0
2	A	1	0	0	0	0
3	A	10	0	5	0	0
3	B	10	0	5	0	0
4	A	31	0	14	1	0
4	B	31	0	14	0	0
5	A	106	0	0	2	0
5	B	107	0	0	6	0
All	All	8660	0	7951	130	0

The all-atom clashscore is defined as the number of clashes found per 1000 atoms (including hydrogen atoms). The all-atom clashscore for this structure is 8.

The worst 5 of 130 close contacts within the same asymmetric unit are listed below, sorted by their clash magnitude.

Atom-1	Atom-2	Interatomic distance (Å)	Clash overlap (Å)
1:A:310:MET:HE2	1:A:314:TYR:CZ	2.10	0.86
1:B:512:CYS:HG	1:B:518:SER:HG	1.15	0.84
1:B:8:ASN:N	5:B:739:HOH:O	2.12	0.82
1:B:513:ARG:NH2	1:B:521:PRO:HA	1.95	0.81
1:A:562:GLN:O	1:A:566:THR:HG23	1.84	0.77

There are no symmetry-related clashes.

5.3 Torsion angles [i](#)

5.3.1 Protein backbone [i](#)

In the following table, the Percentiles column shows the percent Ramachandran outliers of the chain as a percentile score with respect to all X-ray entries followed by that with respect to entries

of similar resolution.

The Analysed column shows the number of residues for which the backbone conformation was analysed, and the total number of residues.

Mol	Chain	Analysed	Favoured	Allowed	Outliers	Percentiles	
1	A	534/581 (92%)	506 (95%)	27 (5%)	1 (0%)	52	83
1	B	537/581 (92%)	507 (94%)	30 (6%)	0	100	100
All	All	1071/1162 (92%)	1013 (95%)	57 (5%)	1 (0%)	56	86

All (1) Ramachandran outliers are listed below:

Mol	Chain	Res	Type
1	A	425	ASP

5.3.2 Protein sidechains ⓘ

In the following table, the Percentiles column shows the percent sidechain outliers of the chain as a percentile score with respect to all X-ray entries followed by that with respect to entries of similar resolution.

The Analysed column shows the number of residues for which the sidechain conformation was analysed, and the total number of residues.

Mol	Chain	Analysed	Rotameric	Outliers	Percentiles	
1	A	445/527 (84%)	436 (98%)	9 (2%)	63	89
1	B	465/527 (88%)	456 (98%)	9 (2%)	65	90
All	All	910/1054 (86%)	892 (98%)	18 (2%)	65	89

5 of 18 residues with a non-rotameric sidechain are listed below:

Mol	Chain	Res	Type
1	A	535	LEU
1	B	24[B]	SER
1	B	163	SER
1	A	498	CYS
1	A	501	MET

Some sidechains can be flipped to improve hydrogen bonding and reduce clashes. All (1) such sidechains are listed below:

Mol	Chain	Res	Type
1	A	28	ASN

5.3.3 RNA ⓘ

There are no RNA molecules in this entry.

5.4 Non-standard residues in protein, DNA, RNA chains ⓘ

There are no non-standard protein/DNA/RNA residues in this entry.

5.5 Carbohydrates ⓘ

There are no carbohydrates in this entry.

5.6 Ligand geometry ⓘ

Of 5 ligands modelled in this entry, 1 is monoatomic - leaving 4 for Mogul analysis.

In the following table, the Counts columns list the number of bonds (or angles) for which Mogul statistics could be retrieved, the number of bonds (or angles) that are observed in the model and the number of bonds (or angles) that are defined in the chemical component dictionary. The Link column lists molecule types, if any, to which the group is linked. The Z score for a bond length (or angle) is the number of standard deviations the observed value is removed from the expected value. A bond length (or angle) with $|Z| > 2$ is considered an outlier worth inspection. RMSZ is the root-mean-square of all Z scores of the bond lengths (or angles).

Mol	Type	Chain	Res	Link	Bond lengths			Bond angles		
					Counts	RMSZ	# $ Z > 2$	Counts	RMSZ	# $ Z > 2$
3	SAL	A	602	-	7,10,10	0.75	0	10,13,13	0.94	1 (10%)
4	APC	A	603	2	25,33,33	2.16	6 (24%)	30,52,52	3.23	9 (30%)
3	SAL	B	601	-	7,10,10	1.03	1 (14%)	10,13,13	0.59	0
4	APC	B	602	-	25,33,33	2.08	5 (20%)	30,52,52	3.08	7 (23%)

In the following table, the Chirals column lists the number of chiral outliers, the number of chiral centers analysed, the number of these observed in the model and the number defined in the chemical component dictionary. Similar counts are reported in the Torsion and Rings columns. '-' means no outliers of that kind were identified.

Mol	Type	Chain	Res	Link	Chirals	Torsions	Rings
3	SAL	A	602	-	-	0/0/4/4	0/1/1/1
4	APC	A	603	2	-	0/15/38/38	0/3/3/3
3	SAL	B	601	-	-	0/0/4/4	0/1/1/1
4	APC	B	602	-	-	0/15/38/38	0/3/3/3

The worst 5 of 12 bond length outliers are listed below:

Mol	Chain	Res	Type	Atoms	Z	Observed(Å)	Ideal(Å)
4	A	603	APC	C2'-C3'	-3.59	1.43	1.53
4	B	602	APC	C2'-C3'	-2.53	1.46	1.53
4	A	603	APC	C3'-C4'	-2.49	1.46	1.53
4	A	603	APC	C5-N7	-2.14	1.32	1.39
4	B	602	APC	C5-N7	-2.06	1.32	1.39

The worst 5 of 17 bond angle outliers are listed below:

Mol	Chain	Res	Type	Atoms	Z	Observed(°)	Ideal(°)
4	A	603	APC	N3-C2-N1	-14.35	117.91	128.89
4	B	602	APC	N3-C2-N1	-12.65	119.21	128.89
4	B	602	APC	C2'-C1'-N9	-7.05	103.52	114.29
4	A	603	APC	C4'-O4'-C1'	-5.27	103.93	109.72
4	A	603	APC	C2'-C1'-N9	-3.97	108.23	114.29

There are no chirality outliers.

There are no torsion outliers.

There are no ring outliers.

1 monomer is involved in 1 short contact:

Mol	Chain	Res	Type	Clashes	Symm-Clashes
4	A	603	APC	1	0

5.7 Other polymers [i](#)

There are no such residues in this entry.

5.8 Polymer linkage issues [i](#)

There are no chain breaks in this entry.

6 Fit of model and data [i](#)

6.1 Protein, DNA and RNA chains [i](#)

In the following table, the column labelled ‘#RSRZ> 2’ contains the number (and percentage) of RSRZ outliers, followed by percent RSRZ outliers for the chain as percentile scores relative to all X-ray entries and entries of similar resolution. The OWAB column contains the minimum, median, 95th percentile and maximum values of the occupancy-weighted average B-factor per residue. The column labelled ‘Q< 0.9’ lists the number of (and percentage) of residues with an average occupancy less than 0.9.

Mol	Chain	Analysed	<RSRZ>	#RSRZ>2	OWAB(Å ²)	Q<0.9
1	A	541/581 (93%)	0.40	99 (18%) 2 1	7, 20, 138, 155	0
1	B	542/581 (93%)	0.68	121 (22%) 1 1	6, 21, 160, 182	0
All	All	1083/1162 (93%)	0.54	220 (20%) 1 1	6, 21, 150, 182	0

The worst 5 of 220 RSRZ outliers are listed below:

Mol	Chain	Res	Type	RSRZ
1	B	554	CYS	15.9
1	B	546	THR	15.4
1	B	487	PHE	12.8
1	A	454	ASP	11.8
1	A	575	ILE	11.5

6.2 Non-standard residues in protein, DNA, RNA chains [i](#)

There are no non-standard protein/DNA/RNA residues in this entry.

6.3 Carbohydrates [i](#)

There are no carbohydrates in this entry.

6.4 Ligands [i](#)

In the following table, the Atoms column lists the number of modelled atoms in the group and the number defined in the chemical component dictionary. LLDF column lists the quality of electron density of the group with respect to its neighbouring residues in protein, DNA or RNA chains. The B-factors column lists the minimum, median, 95th percentile and maximum values of B factors of atoms in the group. The column labelled ‘Q< 0.9’ lists the number of atoms with occupancy less than 0.9.

Mol	Type	Chain	Res	Atoms	RSCC	RSR	LLDF	B-factors(\AA^2)	Q<0.9
3	SAL	B	601	10/10	0.95	0.20	2.72	35,46,51,59	0
3	SAL	A	602	10/10	0.95	0.19	2.18	17,38,46,51	0
4	APC	A	603	31/31	0.93	0.15	0.10	15,30,78,84	0
4	APC	B	602	31/31	0.93	0.14	-0.39	21,39,74,83	0
2	MG	A	601	1/1	0.90	0.13	-	44,44,44,44	0

6.5 Other polymers ⓘ

There are no such residues in this entry.