



Full wwPDB X-ray Structure Validation Report ⓘ

Feb 1, 2016 – 10:13 AM GMT

PDB ID : 3L9L
Title : Crystal structure of pka with compound 36
Authors : Huang, X.
Deposited on : 2010-01-05
Resolution : 2.00 Å(reported)

This is a Full wwPDB X-ray Structure Validation Report for a publicly released PDB entry.
We welcome your comments at validation@mail.wwpdb.org
A user guide is available at
<http://wwpdb.org/validation/2016/XrayValidationReportHelp>
with specific help available everywhere you see the ⓘ symbol.

The following versions of software and data (see [references ⓘ](#)) were used in the production of this report:

MolProbity : 4.02b-467
Mogul : 1.7 (RC4), CSD as536be (2015)
Xtriage (Phenix) : 1.9-1692
EDS : rb-20026688
Percentile statistics : 20151230.v01 (using entries in the PDB archive December 30th 2015)
Refmac : 5.8.0135
CCP4 : 6.5.0
Ideal geometry (proteins) : Engh & Huber (2001)
Ideal geometry (DNA, RNA) : Parkinson et al. (1996)
Validation Pipeline (wwPDB-VP) : trunk26865

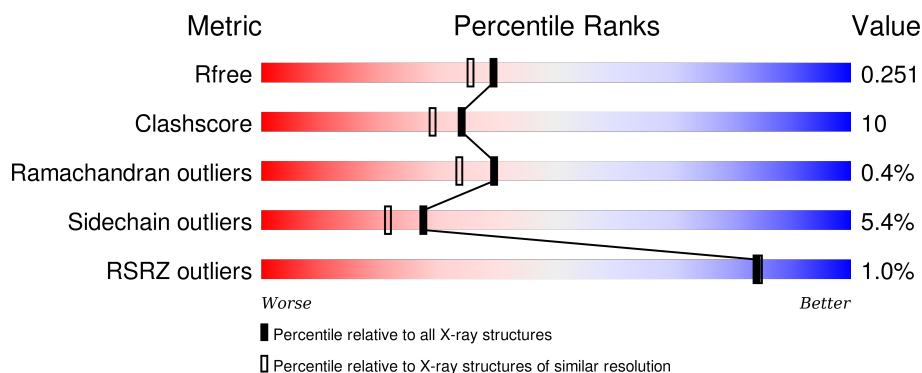
1 Overall quality at a glance

The following experimental techniques were used to determine the structure:

X-RAY DIFFRACTION

The reported resolution of this entry is 2.00 Å.

Percentile scores (ranging between 0-100) for global validation metrics of the entry are shown in the following graphic. The table shows the number of entries on which the scores are based.



Metric	Whole archive (#Entries)	Similar resolution (#Entries, resolution range(Å))
R_{free}	91344	6249 (2.00-2.00)
Clashscore	102246	7340 (2.00-2.00)
Ramachandran outliers	100387	7248 (2.00-2.00)
Sidechain outliers	100360	7247 (2.00-2.00)
RSRZ outliers	91569	6262 (2.00-2.00)

The table below summarises the geometric issues observed across the polymeric chains and their fit to the electron density. The red, orange, yellow and green segments on the lower bar indicate the fraction of residues that contain outliers for ≥ 3 , 2, 1 and 0 types of geometric quality criteria. A grey segment represents the fraction of residues that are not modelled. The numeric value for each fraction is indicated below the corresponding segment, with a dot representing fractions $\leq 5\%$. The upper red bar (where present) indicates the fraction of residues that have poor fit to the electron density. The numeric value is given above the bar.

Mol	Chain	Length	Quality of chain
1	A	351	<div> <div>5%</div> <div>75% 18% . .</div> </div>
1	B	351	<div> <div>5%</div> <div>76% 19% . .</div> </div>
2	C	20	<div> <div>5%</div> <div>90% 5% 5%</div> </div>
2	D	20	<div> <div>80% 10% 10%</div> </div>

2 Entry composition [i](#)

There are 4 unique types of molecules in this entry. The entry contains 6664 atoms, of which 0 are hydrogens and 0 are deuteriums.

In the tables below, the ZeroOcc column contains the number of atoms modelled with zero occupancy, the AltConf column contains the number of residues with at least one atom in alternate conformation and the Trace column contains the number of residues modelled with at most 2 atoms.

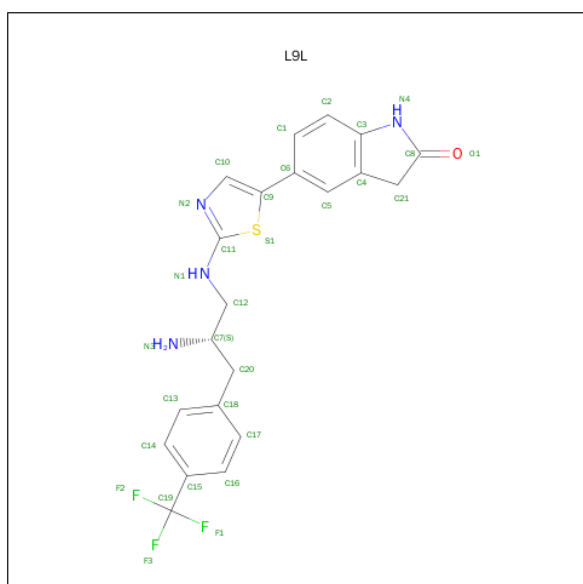
- Molecule 1 is a protein called cAMP-dependent protein kinase catalytic subunit alpha.

Mol	Chain	Residues	Atoms						ZeroOcc	AltConf	Trace
1	A	340	Total	C	N	O	P	S	0	0	0
			2786	1807	466	503	2	8			
1	B	339	Total	C	N	O	P	S	0	0	0
			2779	1802	467	500	2	8			

- Molecule 2 is a protein called cAMP-dependent protein kinase inhibitor alpha.

Mol	Chain	Residues	Atoms				ZeroOcc	AltConf	Trace
2	C	19	Total	C	N	O	0	0	0
			148	90	31	27			
2	D	18	Total	C	N	O	0	0	0
			138	84	28	26			

- Molecule 3 is 5-[2-((2S)-2-AMINO-3-[4-(TRIFLUOROMETHYL)PHENYL]PROPYL}AMINO)-1,3-THIAZOL-5-YL]-1,3-DIHYDRO-2H-INDOL-2-ONE (three-letter code: L9L) (formula: C₂₁H₁₉F₃N₄OS).



Mol	Chain	Residues	Atoms						ZeroOcc	AltConf
3	A	1	Total	C	F	N	O	S	0	0
			30	21	3	4	1	1		
3	B	1	Total	C	F	N	O	S	0	0
			30	21	3	4	1	1		

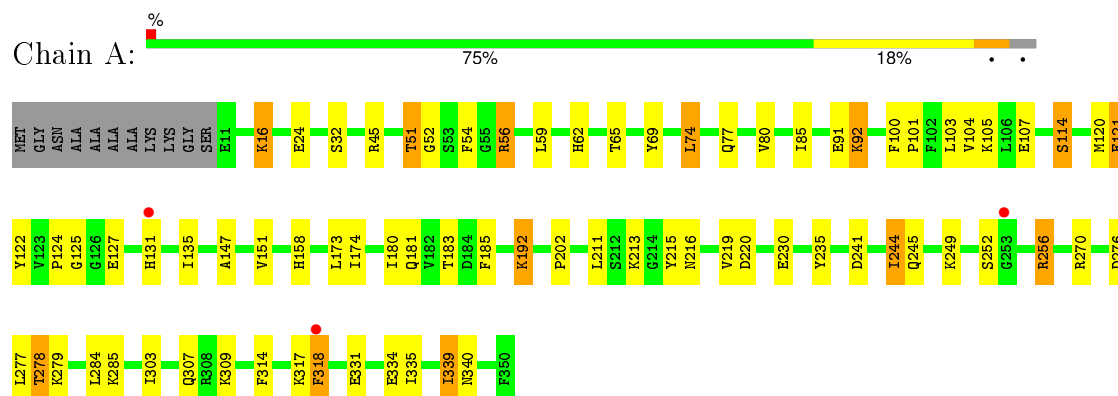
- Molecule 4 is water.

Mol	Chain	Residues	Atoms		ZeroOcc	AltConf
4	A	318	Total	O	0	0
			318	318		
4	C	42	Total	O	0	0
			42	42		
4	B	361	Total	O	4	0
			361	361		
4	D	32	Total	O	0	0
			32	32		

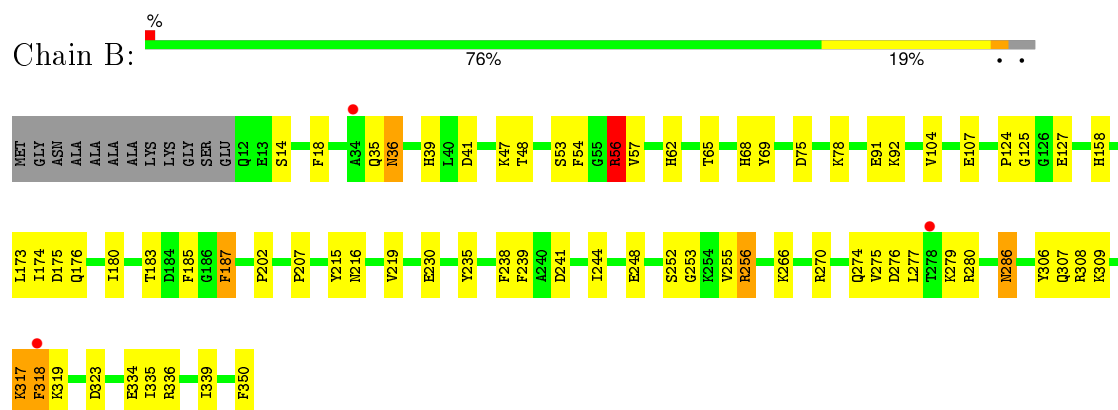
3 Residue-property plots

These plots are drawn for all protein, RNA and DNA chains in the entry. The first graphic for a chain summarises the proportions of errors displayed in the second graphic. The second graphic shows the sequence view annotated by issues in geometry and electron density. Residues are color-coded according to the number of geometric quality criteria for which they contain at least one outlier: green = 0, yellow = 1, orange = 2 and red = 3 or more. A red dot above a residue indicates a poor fit to the electron density ($RSRZ > 2$). Stretches of 2 or more consecutive residues without any outlier are shown as a green connector. Residues present in the sample, but not in the model, are shown in grey.

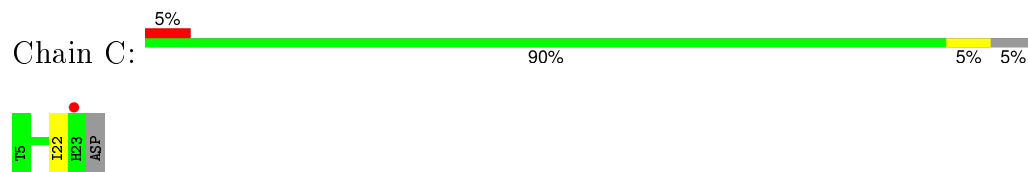
- Molecule 1: cAMP-dependent protein kinase catalytic subunit alpha



- Molecule 1: cAMP-dependent protein kinase catalytic subunit alpha



- Molecule 2: cAMP-dependent protein kinase inhibitor alpha



- Molecule 2: cAMP-dependent protein kinase inhibitor alpha





4 Data and refinement statistics

Property	Value	Source
Space group	C 1 2 1	Depositor
Cell constants a, b, c, α , β , γ	118.04Å 114.42Å 71.81Å 90.00° 125.79° 90.00°	Depositor
Resolution (Å)	30.00 – 2.00 27.37 – 1.90	Depositor EDS
% Data completeness (in resolution range)	(Not available) (30.00-2.00) 95.4 (27.37-1.90)	Depositor EDS
R_{merge}	0.05	Depositor
R_{sym}	(Not available)	Depositor
$\langle I/\sigma(I) \rangle$ ¹	4.68 (at 1.91Å)	Xtriage
Refinement program	CNS	Depositor
R, R_{free}	0.219 , 0.262 0.210 , 0.251	Depositor DCC
R_{free} test set	2581 reflections (5.35%)	DCC
Wilson B-factor (Å ²)	22.7	Xtriage
Anisotropy	0.171	Xtriage
Bulk solvent k_{sol} (e/Å ³), B_{sol} (Å ²)	0.33 , 34.2	EDS
Estimated twinning fraction	0.106 for -h-2*k,l	Xtriage
L-test for twinning ²	$\langle L \rangle = 0.49$, $\langle L^2 \rangle = 0.32$	Xtriage
Outliers	0 of 58032 reflections	Xtriage
F_o, F_c correlation	0.94	EDS
Total number of atoms	6664	wwPDB-VP
Average B, all atoms (Å ²)	22.0	wwPDB-VP

Xtriage's analysis on translational NCS is as follows: *The largest off-origin peak in the Patterson function is 5.15% of the height of the origin peak. No significant pseudotranslation is detected.*

¹Intensities estimated from amplitudes.

²Theoretical values of $\langle |L| \rangle$, $\langle L^2 \rangle$ for acentric reflections are 0.5, 0.375 respectively for untwinned datasets, and 0.333, 0.2 for perfectly twinned datasets.

5 Model quality ⓘ

5.1 Standard geometry ⓘ

Bond lengths and bond angles in the following residue types are not validated in this section: TPO, L9L, SEP

The Z score for a bond length (or angle) is the number of standard deviations the observed value is removed from the expected value. A bond length (or angle) with $|Z| > 5$ is considered an outlier worth inspection. RMSZ is the root-mean-square of all Z scores of the bond lengths (or angles).

Mol	Chain	Bond lengths		Bond angles	
		RMSZ	$\# Z > 5$	RMSZ	$\# Z > 5$
1	A	0.58	1/2836 (0.0%)	0.68	0/3823
1	B	0.55	1/2829 (0.0%)	0.70	2/3814 (0.1%)
2	C	0.54	0/150	0.73	0/201
2	D	0.47	0/139	0.66	0/186
All	All	0.56	2/5954 (0.0%)	0.69	2/8024 (0.0%)

All (2) bond length outliers are listed below:

Mol	Chain	Res	Type	Atoms	Z	Observed(Å)	Ideal(Å)
1	B	175	ASP	CB-CG	5.40	1.63	1.51
1	A	121	GLU	CG-CD	5.31	1.59	1.51

All (2) bond angle outliers are listed below:

Mol	Chain	Res	Type	Atoms	Z	Observed(°)	Ideal(°)
1	B	335	ILE	N-CA-C	-5.69	95.64	111.00
1	B	56	ARG	NE-CZ-NH2	5.23	122.92	120.30

There are no chirality outliers.

There are no planarity outliers.

5.2 Too-close contacts ⓘ

In the following table, the Non-H and H(model) columns list the number of non-hydrogen atoms and hydrogen atoms in the chain respectively. The H(added) column lists the number of hydrogen atoms added and optimized by MolProbity. The Clashes column lists the number of clashes within the asymmetric unit, whereas Symm-Clashes lists symmetry related clashes.

Mol	Chain	Non-H	H(model)	H(added)	Clashes	Symm-Clashes
1	A	2786	0	2749	63	0
1	B	2779	0	2743	54	0
2	C	148	0	142	1	0
2	D	138	0	135	2	0
3	A	30	0	19	0	0
3	B	30	0	19	0	0
4	A	318	0	0	16	0
4	B	361	0	0	19	0
4	C	42	0	0	0	0
4	D	32	0	0	0	0
All	All	6664	0	5807	118	0

The all-atom clashscore is defined as the number of clashes found per 1000 atoms (including hydrogen atoms). The all-atom clashscore for this structure is 10.

All (118) close contacts within the same asymmetric unit are listed below, sorted by their clash magnitude.

Atom-1	Atom-2	Interatomic distance (Å)	Clash overlap (Å)
1:A:45:ARG:HD3	1:A:335:ILE:HD12	1.43	0.99
1:B:39:HIS:HD2	1:B:41:ASP:H	1.13	0.88
1:A:45:ARG:HD3	1:A:335:ILE:CD1	2.08	0.84
1:B:279:LYS:HA	4:B:474:HOH:O	1.86	0.75
1:B:127:GLU:HB3	4:B:547:HOH:O	1.87	0.75
1:B:47:LYS:HE3	4:B:492:HOH:O	1.86	0.74
1:B:318:PHE:HB3	4:B:430:HOH:O	1.89	0.72
1:A:339:ILE:HD12	1:A:340:ASN:ND2	2.05	0.70
1:B:125:GLY:HA3	1:B:174:ILE:O	1.93	0.69
1:A:51:THR:HG23	1:A:56:ARG:HB2	1.74	0.69
1:B:39:HIS:CD2	1:B:41:ASP:H	2.03	0.68
1:A:104:VAL:HA	1:A:181:GLN:NE2	2.08	0.68
1:B:104:VAL:HG21	1:B:183:THR:HG22	1.80	0.64
1:A:158:HIS:HE1	1:A:220:ASP:OD2	1.81	0.63
1:B:62:HIS:HD2	1:B:65:THR:H	1.45	0.63
1:B:158:HIS:HD2	4:B:505:HOH:O	1.82	0.63
1:A:45:ARG:CD	1:A:335:ILE:HD12	2.23	0.62
1:A:74:LEU:N	1:A:74:LEU:HD12	2.14	0.62
1:B:323:ASP:HB3	4:B:491:HOH:O	2.00	0.62
1:A:127:GLU:HA	1:A:173:LEU:HD23	1.82	0.61
1:B:75:ASP:HB3	1:B:78:LYS:HD2	1.81	0.61
1:A:125:GLY:HA3	1:A:174:ILE:O	2.00	0.61
1:B:334:GLU:OE1	1:B:336:ARG:HB2	2.00	0.60
1:B:318:PHE:HD1	1:B:318:PHE:O	1.85	0.59

Continued on next page...

Continued from previous page...

Atom-1	Atom-2	Interatomic distance (Å)	Clash overlap (Å)
1:A:100:PHE:CG	1:A:101:PRO:HD2	2.38	0.59
1:A:104:VAL:HA	1:A:181:GLN:HE22	1.66	0.59
1:B:36:ASN:ND2	4:B:488:HOH:O	2.36	0.59
1:A:192:LYS:HG3	1:A:192:LYS:O	2.02	0.59
1:B:174:ILE:HD13	1:B:180:ILE:HD13	1.85	0.59
1:B:274:GLN:HG3	1:B:276:ASP:O	2.03	0.58
1:A:213:LYS:NZ	4:A:613:HOH:O	2.36	0.58
1:A:104:VAL:HG21	1:A:183:THR:HG22	1.86	0.58
1:B:35:GLN:HG2	1:B:350:PHE:OXT	2.03	0.57
1:A:158:HIS:HD2	4:A:402:HOH:O	1.87	0.56
1:B:124:PRO:HD2	4:B:450:HOH:O	2.05	0.56
1:A:276:ASP:OD1	1:A:278:THR:HG23	2.05	0.56
1:B:91:GLU:HG3	1:B:185:PHE:HB2	1.88	0.56
1:A:202:PRO:HD3	2:C:22:ILE:HG23	1.87	0.56
1:A:211:LEU:HD12	4:A:563:HOH:O	2.06	0.55
1:B:339:ILE:HD11	4:B:891:HOH:O	2.06	0.55
1:B:256:ARG:CZ	1:B:256:ARG:HB2	2.36	0.55
1:A:276:ASP:C	1:A:278:THR:H	2.09	0.55
1:B:318:PHE:CD1	1:B:318:PHE:C	2.80	0.54
1:A:100:PHE:CD1	1:A:101:PRO:HD2	2.43	0.54
1:B:127:GLU:HA	1:B:173:LEU:HD23	1.88	0.54
1:A:147:ALA:O	1:A:151:VAL:HG23	2.07	0.53
1:A:104:VAL:HG22	1:A:181:GLN:HE21	1.73	0.53
1:A:114:SER:HB3	4:A:405:HOH:O	2.08	0.53
1:B:62:HIS:CD2	1:B:65:THR:H	2.25	0.53
1:A:124:PRO:HD2	4:A:534:HOH:O	2.09	0.53
1:B:286:ASN:ND2	4:B:823:HOH:O	2.42	0.52
1:A:279:LYS:HA	1:A:284:LEU:HD21	1.92	0.52
1:A:62:HIS:HD2	1:A:65:THR:H	1.56	0.51
1:A:215:TYR:CD2	1:A:219:VAL:HG11	2.45	0.50
1:A:249:LYS:HD3	4:A:427:HOH:O	2.12	0.50
1:B:256:ARG:NH2	4:B:550:HOH:O	2.44	0.50
1:B:277:LEU:HD21	1:B:280:ARG:NH1	2.27	0.50
1:B:176:GLN:NE2	1:B:318:PHE:CZ	2.80	0.49
1:B:54:PHE:HE1	1:B:57:VAL:HG23	1.78	0.49
1:A:104:VAL:HG13	1:A:121:GLU:HB2	1.94	0.49
1:B:69:TYR:CE1	1:B:107:GLU:HG3	2.48	0.49
1:A:276:ASP:CG	1:A:278:THR:HG23	2.33	0.48
1:A:51:THR:HG23	1:A:56:ARG:CB	2.41	0.48
1:A:120:MET:HE2	4:A:482:HOH:O	2.13	0.48
1:A:135:ILE:HG22	1:A:135:ILE:O	2.12	0.48

Continued on next page...

Continued from previous page...

Atom-1	Atom-2	Interatomic distance (Å)	Clash overlap (Å)
1:A:62:HIS:HE1	4:A:516:HOH:O	1.95	0.48
1:B:68:HIS:HD2	4:B:413:HOH:O	1.95	0.48
1:B:317:LYS:HE3	1:B:317:LYS:HB2	1.59	0.48
1:B:277:LEU:HD21	1:B:280:ARG:CZ	2.44	0.48
1:A:318:PHE:HB2	4:A:545:HOH:O	2.13	0.48
1:B:308:ARG:NH1	4:B:459:HOH:O	2.43	0.48
1:A:303:ILE:N	1:A:303:ILE:HD12	2.29	0.47
1:A:270:ARG:NH2	4:A:437:HOH:O	2.39	0.47
1:A:131:HIS:CD2	1:A:314:PHE:CE2	3.02	0.47
1:B:238:PHE:CZ	1:B:255:VAL:HG22	2.50	0.47
1:B:18:PHE:HE1	1:B:306:TYR:HH	1.63	0.47
1:B:174:ILE:HD13	1:B:180:ILE:CD1	2.45	0.46
1:B:230:GLU:HG3	1:B:235:TYR:C	2.36	0.46
1:B:215:TYR:CD2	1:B:219:VAL:HG11	2.50	0.46
4:B:599:HOH:O	2:D:11:ILE:HD11	2.15	0.46
1:A:307:GLN:NE2	1:A:309:LYS:NZ	2.64	0.46
1:B:248:GLU:HG3	4:B:551:HOH:O	2.15	0.45
1:A:131:HIS:CD2	4:A:573:HOH:O	2.69	0.45
1:A:45:ARG:NH1	1:A:335:ILE:HB	2.31	0.45
1:A:91:GLU:HG3	1:A:185:PHE:HB2	1.99	0.45
1:A:276:ASP:C	1:A:278:THR:N	2.70	0.45
1:B:216:ASN:HB2	4:B:457:HOH:O	2.16	0.45
1:A:92:LYS:HD2	1:A:92:LYS:O	2.16	0.45
1:B:318:PHE:HD1	1:B:318:PHE:C	2.17	0.45
1:B:39:HIS:HD2	1:B:41:ASP:N	1.96	0.45
1:B:318:PHE:HB2	4:B:491:HOH:O	2.17	0.45
1:A:318:PHE:HA	4:A:378:HOH:O	2.16	0.45
1:A:125:GLY:O	1:A:131:HIS:HE1	1.99	0.44
1:B:187:PHE:N	1:B:187:PHE:CD2	2.85	0.44
1:B:48:THR:OG1	1:B:56:ARG:NH1	2.51	0.44
1:A:16:LYS:HB3	1:A:16:LYS:HE3	1.80	0.44
1:B:286:ASN:HB3	4:B:823:HOH:O	2.18	0.43
1:A:303:ILE:H	1:A:303:ILE:HD12	1.83	0.43
1:A:59:LEU:HD13	1:A:122:TYR:CZ	2.53	0.43
1:A:104:VAL:HG22	1:A:181:GLN:HB3	2.01	0.43
1:A:230:GLU:HG3	1:A:235:TYR:C	2.40	0.43
1:A:256:ARG:HG2	4:A:746:HOH:O	2.19	0.42
1:A:103:LEU:HD22	1:A:185:PHE:HZ	1.83	0.42
1:B:252:SER:OG	1:B:253:GLY:N	2.52	0.42
1:B:207:PRO:HG2	1:B:275:VAL:HG12	2.00	0.42
1:A:69:TYR:CE1	1:A:107:GLU:HG3	2.55	0.42

Continued on next page...

Continued from previous page...

Atom-1	Atom-2	Interatomic distance (Å)	Clash overlap (Å)
1:A:105:LYS:HB2	1:A:121:GLU:HG3	2.02	0.42
1:A:131:HIS:HB3	4:A:451:HOH:O	2.20	0.42
1:A:244:ILE:HG23	1:A:245:GLN:N	2.35	0.41
1:A:216:ASN:HB2	4:A:401:HOH:O	2.19	0.41
1:B:68:HIS:HE1	4:B:388:HOH:O	2.02	0.41
1:A:80:VAL:HG22	1:A:85:ILE:HD11	2.02	0.41
1:B:266:LYS:O	1:B:270:ARG:HG3	2.20	0.41
1:A:77:GLN:HG3	4:A:420:HOH:O	2.20	0.41
1:A:52:GLY:C	1:A:54:PHE:N	2.73	0.41
1:B:239:PHE:CE1	2:D:10:PHE:HA	2.56	0.40
1:B:307:GLN:HE21	1:B:309:LYS:HD2	1.87	0.40
1:A:131:HIS:CD2	1:A:314:PHE:CZ	3.09	0.40

There are no symmetry-related clashes.

5.3 Torsion angles ⓘ

5.3.1 Protein backbone ⓘ

In the following table, the Percentiles column shows the percent Ramachandran outliers of the chain as a percentile score with respect to all X-ray entries followed by that with respect to entries of similar resolution.

The Analysed column shows the number of residues for which the backbone conformation was analysed, and the total number of residues.

Mol	Chain	Analysed	Favoured	Allowed	Outliers	Percentiles	
1	A	336/351 (96%)	321 (96%)	14 (4%)	1 (0%)	46	41
1	B	335/351 (95%)	322 (96%)	11 (3%)	2 (1%)	30	22
2	C	17/20 (85%)	17 (100%)	0	0	100	100
2	D	16/20 (80%)	16 (100%)	0	0	100	100
All	All	704/742 (95%)	676 (96%)	25 (4%)	3 (0%)	39	33

All (3) Ramachandran outliers are listed below:

Mol	Chain	Res	Type
1	A	277	LEU
1	B	36	ASN
1	B	202	PRO

5.3.2 Protein sidechains ⓘ

In the following table, the Percentiles column shows the percent sidechain outliers of the chain as a percentile score with respect to all X-ray entries followed by that with respect to entries of similar resolution.

The Analysed column shows the number of residues for which the sidechain conformation was analysed, and the total number of residues.

Mol	Chain	Analysed	Rotameric	Outliers	Percentiles	
1	A	293/304 (96%)	272 (93%)	21 (7%)	18	12
1	B	292/304 (96%)	280 (96%)	12 (4%)	37	32
2	C	14/15 (93%)	14 (100%)	0	100	100
2	D	13/15 (87%)	13 (100%)	0	100	100
All	All	612/638 (96%)	579 (95%)	33 (5%)	27	21

All (33) residues with a non-rotameric sidechain are listed below:

Mol	Chain	Res	Type
1	A	16	LYS
1	A	24	GLU
1	A	32	SER
1	A	51	THR
1	A	56	ARG
1	A	74	LEU
1	A	92	LYS
1	A	114	SER
1	A	180	ILE
1	A	192	LYS
1	A	241	ASP
1	A	244	ILE
1	A	252	SER
1	A	256	ARG
1	A	278	THR
1	A	285	LYS
1	A	317	LYS
1	A	318	PHE
1	A	331	GLU
1	A	334	GLU
1	A	339	ILE
1	B	14	SER
1	B	53	SER
1	B	56	ARG

Continued on next page...

Continued from previous page...

Mol	Chain	Res	Type
1	B	92	LYS
1	B	187	PHE
1	B	241	ASP
1	B	244	ILE
1	B	256	ARG
1	B	286	ASN
1	B	317	LYS
1	B	318	PHE
1	B	319	LYS

Some sidechains can be flipped to improve hydrogen bonding and reduce clashes. All (21) such sidechains are listed below:

Mol	Chain	Res	Type
1	A	39	HIS
1	A	42	GLN
1	A	62	HIS
1	A	84	GLN
1	A	87	HIS
1	A	113	ASN
1	A	131	HIS
1	A	158	HIS
1	A	181	GLN
1	A	271	ASN
1	A	307	GLN
1	A	340	ASN
1	B	35	GLN
1	B	39	HIS
1	B	62	HIS
1	B	68	HIS
1	B	84	GLN
1	B	87	HIS
1	B	113	ASN
1	B	158	HIS
1	B	307	GLN

5.3.3 RNA ⓘ

There are no RNA molecules in this entry.

5.4 Non-standard residues in protein, DNA, RNA chains ⓘ

4 non-standard protein/DNA/RNA residues are modelled in this entry.

In the following table, the Counts columns list the number of bonds (or angles) for which Mogul statistics could be retrieved, the number of bonds (or angles) that are observed in the model and the number of bonds (or angles) that are defined in the chemical component dictionary. The Link column lists molecule types, if any, to which the group is linked. The Z score for a bond length (or angle) is the number of standard deviations the observed value is removed from the expected value. A bond length (or angle) with $|Z| > 2$ is considered an outlier worth inspection. RMSZ is the root-mean-square of all Z scores of the bond lengths (or angles).

Mol	Type	Chain	Res	Link	Bond lengths			Bond angles		
					Counts	RMSZ	# $ Z > 2$	Counts	RMSZ	# $ Z > 2$
1	TPO	A	197	1	8,10,11	0.73	0	7,14,16	1.90	2 (28%)
1	SEP	A	338	1	8,9,10	0.87	0	8,12,14	2.23	1 (12%)
1	TPO	B	197	1	8,10,11	0.49	0	7,14,16	1.78	2 (28%)
1	SEP	B	338	1	8,9,10	0.84	0	8,12,14	1.59	1 (12%)

In the following table, the Chirals column lists the number of chiral outliers, the number of chiral centers analysed, the number of these observed in the model and the number defined in the chemical component dictionary. Similar counts are reported in the Torsion and Rings columns. '-' means no outliers of that kind were identified.

Mol	Type	Chain	Res	Link	Chirals	Torsions	Rings
1	TPO	A	197	1	-	0/8/11/13	0/0/0/0
1	SEP	A	338	1	-	0/6/8/10	0/0/0/0
1	TPO	B	197	1	-	0/8/11/13	0/0/0/0
1	SEP	B	338	1	-	0/6/8/10	0/0/0/0

There are no bond length outliers.

All (6) bond angle outliers are listed below:

Mol	Chain	Res	Type	Atoms	Z	Observed(°)	Ideal(°)
1	A	197	TPO	CG2-CB-CA	-2.24	108.62	113.17
1	B	197	TPO	CG2-CB-CA	-2.23	108.63	113.17
1	B	338	SEP	OG-CB-CA	3.23	111.03	108.27
1	B	197	TPO	C-CA-N	3.50	117.14	109.83
1	A	197	TPO	C-CA-N	3.83	117.84	109.83
1	A	338	SEP	OG-CB-CA	5.78	113.20	108.27

There are no chirality outliers.

There are no torsion outliers.

There are no ring outliers.

No monomer is involved in short contacts.

5.5 Carbohydrates [i](#)

There are no carbohydrates in this entry.

5.6 Ligand geometry [i](#)

2 ligands are modelled in this entry.

In the following table, the Counts columns list the number of bonds (or angles) for which Mogul statistics could be retrieved, the number of bonds (or angles) that are observed in the model and the number of bonds (or angles) that are defined in the chemical component dictionary. The Link column lists molecule types, if any, to which the group is linked. The Z score for a bond length (or angle) is the number of standard deviations the observed value is removed from the expected value. A bond length (or angle) with $|Z| > 2$ is considered an outlier worth inspection. RMSZ is the root-mean-square of all Z scores of the bond lengths (or angles).

Mol	Type	Chain	Res	Link	Bond lengths			Bond angles		
					Counts	RMSZ	$\# Z > 2$	Counts	RMSZ	$\# Z > 2$
3	L9L	A	351	-	29,33,33	3.00	16 (55%)	36,48,48	1.95	12 (33%)
3	L9L	B	351	-	29,33,33	3.02	16 (55%)	36,48,48	2.20	14 (38%)

In the following table, the Chirals column lists the number of chiral outliers, the number of chiral centers analysed, the number of these observed in the model and the number defined in the chemical component dictionary. Similar counts are reported in the Torsion and Rings columns. '-' means no outliers of that kind were identified.

Mol	Type	Chain	Res	Link	Chirals	Torsions	Rings
3	L9L	A	351	-	-	0/17/27/27	0/4/4/4
3	L9L	B	351	-	-	0/17/27/27	0/4/4/4

All (32) bond length outliers are listed below:

Mol	Chain	Res	Type	Atoms	Z	Observed(Å)	Ideal(Å)
3	A	351	L9L	C3-N4	-2.94	1.33	1.38
3	B	351	L9L	C3-N4	-2.76	1.33	1.38
3	B	351	L9L	C5-C4	2.26	1.43	1.39
3	B	351	L9L	C17-C18	2.39	1.43	1.38
3	A	351	L9L	C3-C4	2.39	1.41	1.39
3	B	351	L9L	C10-C9	2.49	1.42	1.37
3	A	351	L9L	C2-C1	2.53	1.43	1.38

Continued on next page...

Continued from previous page...

Mol	Chain	Res	Type	Atoms	Z	Observed(Å)	Ideal(Å)
3	A	351	L9L	C5-C4	2.54	1.44	1.39
3	B	351	L9L	C2-C3	2.64	1.44	1.39
3	A	351	L9L	C17-C18	2.82	1.44	1.38
3	B	351	L9L	C14-C13	2.88	1.43	1.38
3	A	351	L9L	C2-C3	3.06	1.45	1.39
3	A	351	L9L	C16-C17	3.12	1.44	1.38
3	B	351	L9L	C2-C1	3.23	1.44	1.38
3	B	351	L9L	C16-C17	3.25	1.44	1.38
3	B	351	L9L	C1-C6	3.28	1.46	1.39
3	B	351	L9L	C19-C15	3.41	1.57	1.49
3	A	351	L9L	C14-C13	3.48	1.45	1.38
3	A	351	L9L	C1-C6	3.48	1.46	1.39
3	A	351	L9L	C21-C8	3.49	1.54	1.52
3	A	351	L9L	C19-C15	3.52	1.57	1.49
3	B	351	L9L	C3-C4	3.60	1.42	1.39
3	B	351	L9L	C5-C6	3.77	1.46	1.39
3	A	351	L9L	C10-C9	3.90	1.44	1.37
3	B	351	L9L	C21-C8	4.06	1.54	1.52
3	A	351	L9L	C5-C6	4.52	1.48	1.39
3	A	351	L9L	C14-C15	5.42	1.47	1.39
3	B	351	L9L	C14-C15	5.48	1.47	1.39
3	B	351	L9L	C16-C15	6.17	1.49	1.39
3	A	351	L9L	C16-C15	6.18	1.49	1.39
3	A	351	L9L	C11-N1	6.27	1.45	1.35
3	B	351	L9L	C11-N1	7.32	1.47	1.35

All (26) bond angle outliers are listed below:

Mol	Chain	Res	Type	Atoms	Z	Observed(°)	Ideal(°)
3	A	351	L9L	F1-C19-C15	-4.60	103.12	112.95
3	B	351	L9L	F2-C19-C15	-4.45	103.44	112.95
3	B	351	L9L	C14-C13-C18	-4.08	115.45	121.04
3	B	351	L9L	C16-C17-C18	-3.74	115.92	121.04
3	A	351	L9L	C16-C17-C18	-3.58	116.14	121.04
3	A	351	L9L	F2-C19-C15	-3.10	106.32	112.95
3	B	351	L9L	C20-C18-C13	-2.85	114.94	120.90
3	A	351	L9L	C14-C13-C18	-2.80	117.21	121.04
3	B	351	L9L	F1-C19-C15	-2.79	106.98	112.95
3	B	351	L9L	C1-C2-C3	-2.73	114.47	119.79
3	A	351	L9L	F3-C19-C15	-2.72	107.13	112.95
3	B	351	L9L	F3-C19-C15	-2.62	107.34	112.95
3	A	351	L9L	C20-C18-C13	-2.51	115.66	120.90

Continued on next page...

Continued from previous page...

Mol	Chain	Res	Type	Atoms	Z	Observed(°)	Ideal(°)
3	B	351	L9L	C6-C5-C4	-2.24	118.52	121.96
3	A	351	L9L	C1-C2-C3	-2.04	115.82	119.79
3	A	351	L9L	C2-C1-C6	2.09	124.19	121.14
3	A	351	L9L	C14-C15-C19	2.09	123.13	119.99
3	A	351	L9L	F3-C19-F2	2.22	113.71	105.71
3	B	351	L9L	C5-C4-C3	2.31	121.40	120.30
3	B	351	L9L	C9-C10-N2	2.34	113.78	109.09
3	B	351	L9L	C2-C1-C6	2.42	124.67	121.14
3	B	351	L9L	C1-C6-C9	2.43	124.20	120.21
3	B	351	L9L	F2-C19-F1	2.45	114.55	105.71
3	A	351	L9L	F3-C19-F1	2.58	115.03	105.71
3	A	351	L9L	C17-C18-C13	4.60	125.49	118.13
3	B	351	L9L	C17-C18-C13	5.40	126.77	118.13

There are no chirality outliers.

There are no torsion outliers.

There are no ring outliers.

No monomer is involved in short contacts.

5.7 Other polymers

There are no such residues in this entry.

5.8 Polymer linkage issues

There are no chain breaks in this entry.

6 Fit of model and data ⓘ

6.1 Protein, DNA and RNA chains ⓘ

In the following table, the column labelled ‘#RSRZ> 2’ contains the number (and percentage) of RSRZ outliers, followed by percent RSRZ outliers for the chain as percentile scores relative to all X-ray entries and entries of similar resolution. The OWAB column contains the minimum, median, 95th percentile and maximum values of the occupancy-weighted average B-factor per residue. The column labelled ‘Q< 0.9’ lists the number of (and percentage) of residues with an average occupancy less than 0.9.

Mol	Chain	Analysed	<RSRZ>	#RSRZ>2	OWAB(Å ²)	Q<0.9
1	A	338/351 (96%)	-0.46	3 (0%) 85 86	13, 20, 36, 45	0
1	B	337/351 (96%)	-0.44	3 (0%) 85 86	12, 20, 36, 43	0
2	C	19/20 (95%)	-0.39	1 (5%) 30 32	16, 19, 32, 44	0
2	D	18/20 (90%)	-0.50	0 100 100	15, 19, 25, 29	0
All	All	712/742 (95%)	-0.45	7 (0%) 84 84	12, 20, 36, 45	0

All (7) RSRZ outliers are listed below:

Mol	Chain	Res	Type	RSRZ
1	B	318	PHE	4.0
1	B	34	ALA	3.5
2	C	23	HIS	2.9
1	B	278	THR	2.8
1	A	253	GLY	2.6
1	A	318	PHE	2.5
1	A	131	HIS	2.3

6.2 Non-standard residues in protein, DNA, RNA chains ⓘ

In the following table, the Atoms column lists the number of modelled atoms in the group and the number defined in the chemical component dictionary. LLDF column lists the quality of electron density of the group with respect to its neighbouring residues in protein, DNA or RNA chains. The B-factors column lists the minimum, median, 95th percentile and maximum values of B factors of atoms in the group. The column labelled ‘Q< 0.9’ lists the number of atoms with occupancy less than 0.9.

Mol	Type	Chain	Res	Atoms	RSCC	RSR	LLDF	B-factors(Å ²)	Q<0.9
1	TPO	A	197	11/12	0.97	0.09	-	15,16,17,18	0
1	TPO	B	197	11/12	0.96	0.10	-	16,19,19,20	0
1	SEP	A	338	10/11	0.89	0.12	-	36,38,44,44	0

Continued on next page...

Continued from previous page...

Mol	Type	Chain	Res	Atoms	RSCC	RSR	LLDF	B-factors(\AA^2)	Q<0.9
1	SEP	B	338	10/11	0.97	0.07	-	25,29,30,31	0

6.3 Carbohydrates [i](#)

There are no carbohydrates in this entry.

6.4 Ligands [i](#)

In the following table, the Atoms column lists the number of modelled atoms in the group and the number defined in the chemical component dictionary. LLDF column lists the quality of electron density of the group with respect to its neighbouring residues in protein, DNA or RNA chains. The B-factors column lists the minimum, median, 95th percentile and maximum values of B factors of atoms in the group. The column labelled 'Q< 0.9' lists the number of atoms with occupancy less than 0.9.

Mol	Type	Chain	Res	Atoms	RSCC	RSR	LLDF	B-factors(\AA^2)	Q<0.9
3	L9L	B	351	30/30	0.95	0.09	-0.06	13,15,21,23	0
3	L9L	A	351	30/30	0.95	0.09	-0.19	12,15,20,22	0

6.5 Other polymers [i](#)

There are no such residues in this entry.