



# wwPDB X-ray Structure Validation Summary Report ⓘ

Feb 19, 2016 – 06:41 PM GMT

PDB ID : 3L9W  
Title : KefC C-terminal domain in complex with KefF and GSH  
Authors : Roosild, T.P.  
Deposited on : 2010-01-05  
Resolution : 1.75 Å(reported)

This is a wwPDB X-ray Structure Validation Summary Report for a publicly released PDB entry.  
We welcome your comments at [validation@mail.wwpdb.org](mailto:validation@mail.wwpdb.org)  
A user guide is available at  
<http://wwpdb.org/validation/2016/XrayValidationReportHelp>  
with specific help available everywhere you see the ⓘ symbol.

---

The following versions of software and data (see [references ⓘ](#)) were used in the production of this report:

MolProbity : 4.02b-467  
Mogul : 1.7.1 (RC1), CSD as537be (2016)  
Xtriage (Phenix) : 1.9-1692  
EDS : rb-20026982  
Percentile statistics : 20151230.v01 (using entries in the PDB archive December 30th 2015)  
Refmac : 5.8.0135  
CCP4 : 6.5.0  
Ideal geometry (proteins) : Engh & Huber (2001)  
Ideal geometry (DNA, RNA) : Parkinson et al. (1996)  
Validation Pipeline (wwPDB-VP) : rb-20026982

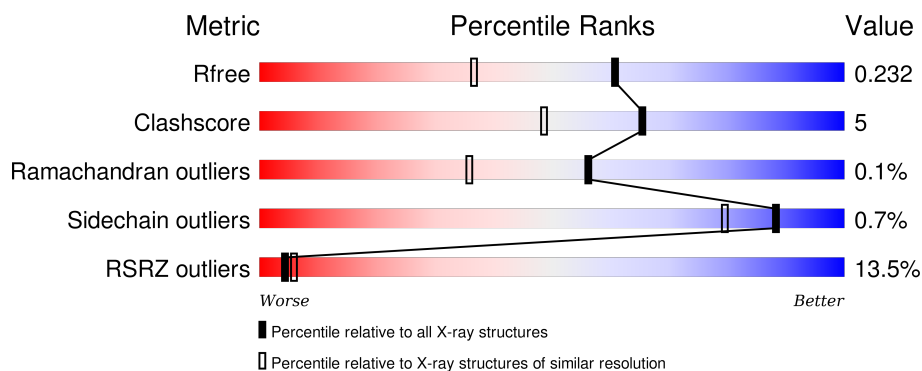
# 1 Overall quality at a glance ⓘ

The following experimental techniques were used to determine the structure:

*X-RAY DIFFRACTION*

The reported resolution of this entry is 1.75 Å.

Percentile scores (ranging between 0-100) for global validation metrics of the entry are shown in the following graphic. The table shows the number of entries on which the scores are based.



Metric	Whole archive (#Entries)	Similar resolution (#Entries, resolution range(Å))
$R_{free}$	91344	1609 (1.76-1.76)
Clashscore	102246	1730 (1.76-1.76)
Ramachandran outliers	100387	1711 (1.76-1.76)
Sidechain outliers	100360	1711 (1.76-1.76)
RSRZ outliers	91569	1610 (1.76-1.76)

The table below summarises the geometric issues observed across the polymeric chains and their fit to the electron density. The red, orange, yellow and green segments on the lower bar indicate the fraction of residues that contain outliers for  $\geq 3$ , 2, 1 and 0 types of geometric quality criteria. A grey segment represents the fraction of residues that are not modelled. The numeric value for each fraction is indicated below the corresponding segment, with a dot representing fractions  $\leq 5\%$ . The upper red bar (where present) indicates the fraction of residues that have poor fit to the electron density. The numeric value is given above the bar.

Mol	Chain	Length	Quality of chain
1	A	413	<div> <div>12%</div> <div>73%</div> <div>9%</div> <div>18%</div> </div>
1	B	413	<div> <div>11%</div> <div>75%</div> <div>11%</div> <div>14%</div> </div>

## 2 Entry composition

There are 7 unique types of molecules in this entry. The entry contains 5981 atoms, of which 0 are hydrogens and 0 are deuteriums.

In the tables below, the ZeroOcc column contains the number of atoms modelled with zero occupancy, the AltConf column contains the number of residues with at least one atom in alternate conformation and the Trace column contains the number of residues modelled with at most 2 atoms.

- Molecule 1 is a protein called Glutathione-regulated potassium-efflux system protein kefC, linker, ancillary protein kefF.

Mol	Chain	Residues	Atoms					ZeroOcc	AltConf	Trace
1	A	338	Total	C	N	O	S	0	0	0
			2707	1732	480	480	15			
1	B	357	Total	C	N	O	S	0	0	0
			2853	1820	508	509	16			

There are 34 discrepancies between the modelled and reference sequences:

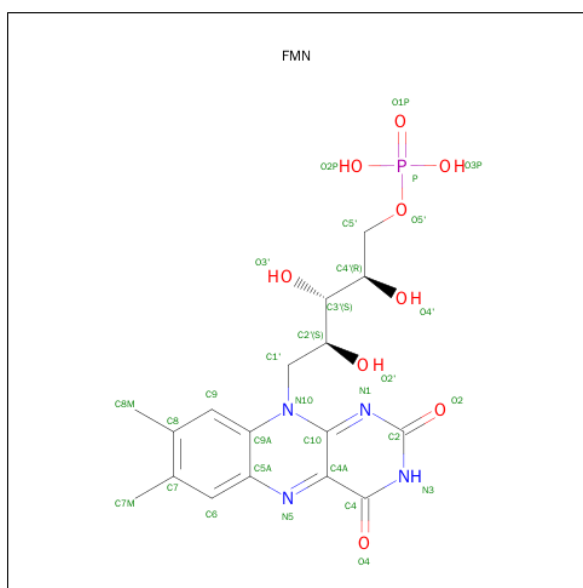
Chain	Residue	Modelled	Actual	Comment	Reference
A	396	GLY	-	EXPRESSION TAG	UNP P03819
A	397	SER	-	EXPRESSION TAG	UNP P03819
A	398	HIS	-	EXPRESSION TAG	UNP P03819
A	399	GLY	-	EXPRESSION TAG	UNP P03819
A	400	MET	-	EXPRESSION TAG	UNP P03819
A	989	THR	-	linker	UNP P03819
A	990	SER	-	linker	UNP P03819
A	991	GLY	-	linker	UNP P03819
A	992	GLY	-	linker	UNP P03819
A	993	LEU	-	linker	UNP P03819
A	994	VAL	-	linker	UNP P03819
A	995	PRO	-	linker	UNP P03819
A	996	ARG	-	linker	UNP P03819
A	997	GLY	-	linker	UNP P03819
A	998	SER	-	linker	UNP P03819
A	999	SER	-	linker	UNP P03819
A	1000	GLY	-	linker	UNP P03819
B	396	GLY	-	EXPRESSION TAG	UNP P03819
B	397	SER	-	EXPRESSION TAG	UNP P03819
B	398	HIS	-	EXPRESSION TAG	UNP P03819
B	399	GLY	-	EXPRESSION TAG	UNP P03819
B	400	MET	-	EXPRESSION TAG	UNP P03819
B	989	THR	-	linker	UNP P03819
B	990	SER	-	linker	UNP P03819

*Continued on next page...*

Continued from previous page...

Chain	Residue	Modelled	Actual	Comment	Reference
B	991	GLY	-	linker	UNP P03819
B	992	GLY	-	linker	UNP P03819
B	993	LEU	-	linker	UNP P03819
B	994	VAL	-	linker	UNP P03819
B	995	PRO	-	linker	UNP P03819
B	996	ARG	-	linker	UNP P03819
B	997	GLY	-	linker	UNP P03819
B	998	SER	-	linker	UNP P03819
B	999	SER	-	linker	UNP P03819
B	1000	GLY	-	linker	UNP P03819

- Molecule 2 is FLAVIN MONONUCLEOTIDE (three-letter code: FMN) (formula:  $C_{17}H_{21}N_4O_9P$ ).



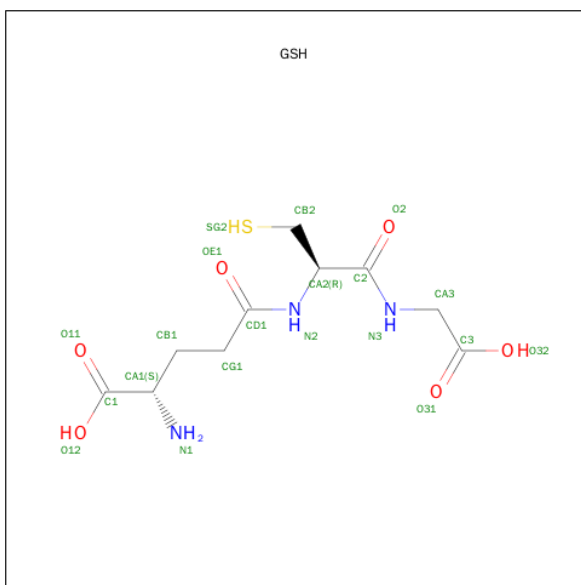


Mol	Chain	Residues	Atoms					ZeroOcc	AltConf
3	A	1	Total	C	N	O	P	0	0
			23	10	5	7	1		
3	B	1	Total	C	N	O	P	0	0
			23	10	5	7	1		

- Molecule 4 is ZINC ION (three-letter code: ZN) (formula: Zn).

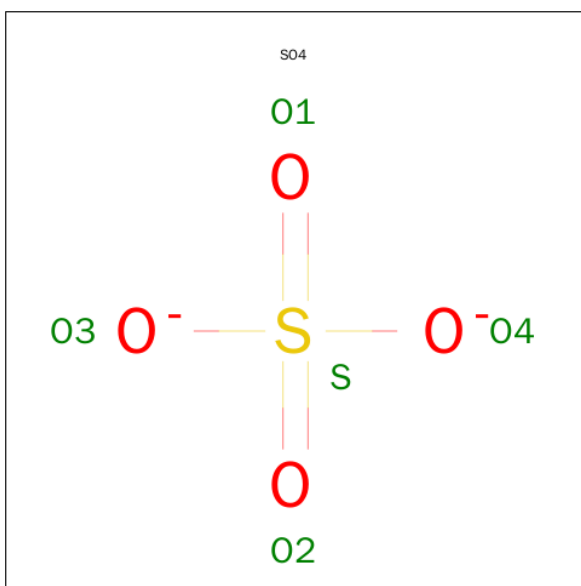
Mol	Chain	Residues	Atoms		ZeroOcc	AltConf
4	B	1	Total	Zn	0	0
			1	1		
4	A	1	Total	Zn	0	0
			1	1		

- Molecule 5 is GLUTATHIONE (three-letter code: GSH) (formula: C<sub>10</sub>H<sub>17</sub>N<sub>3</sub>O<sub>6</sub>S).



Mol	Chain	Residues	Atoms					ZeroOcc	AltConf
5	B	1	Total	C	N	O	S	0	0
			20	10	3	6	1		

- Molecule 6 is SULFATE ION (three-letter code: SO4) (formula: O<sub>4</sub>S).



Mol	Chain	Residues	Atoms			ZeroOcc	AltConf
6	B	1	Total	O	S	0	0
			5	4	1		

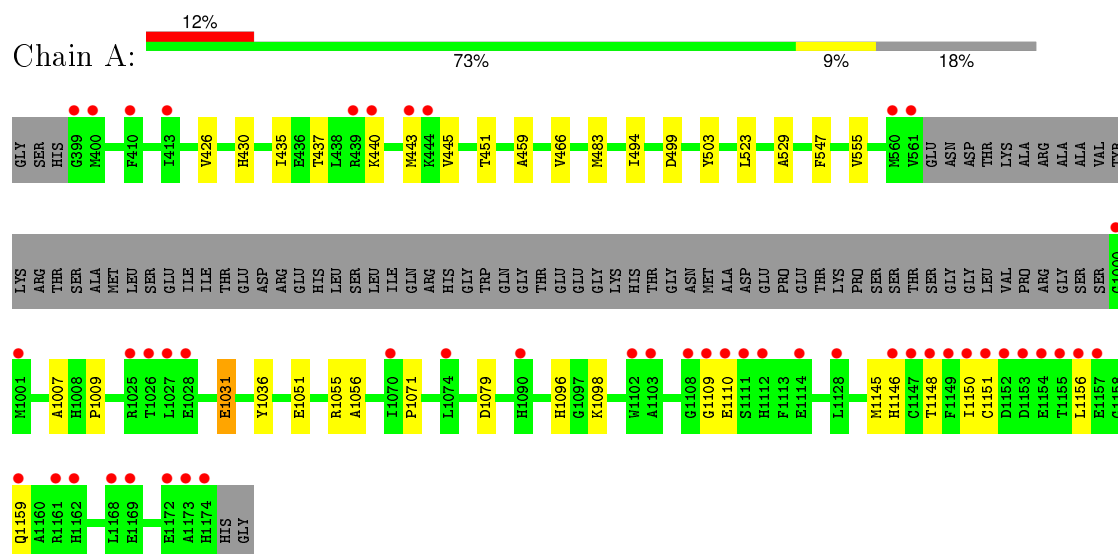
- Molecule 7 is water.

Mol	Chain	Residues	Atoms		ZeroOcc	AltConf
7	A	142	Total 142	O 142	0	0
7	B	144	Total 144	O 144	0	0

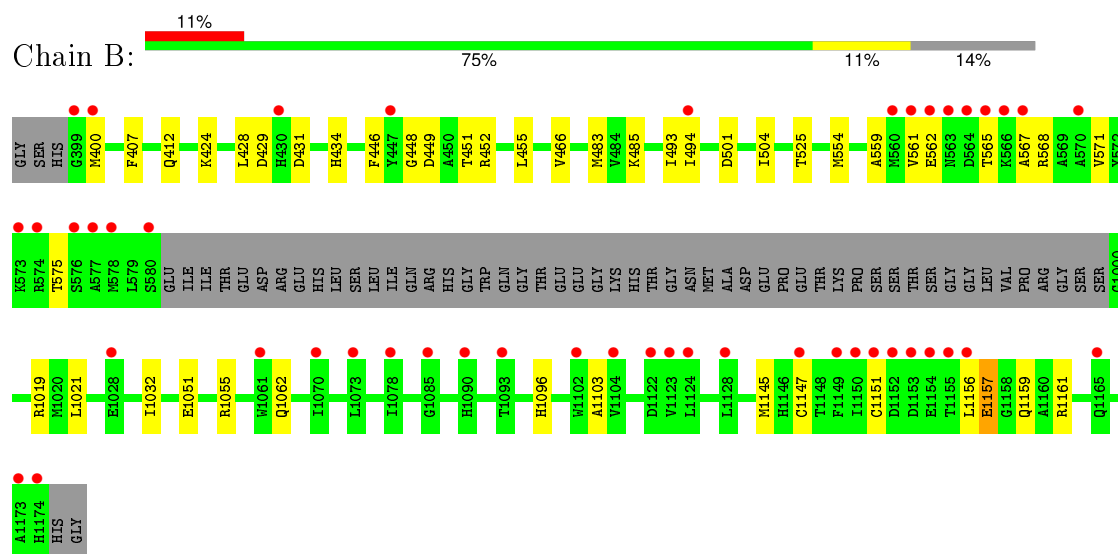
### 3 Residue-property plots [i](#)

These plots are drawn for all protein, RNA and DNA chains in the entry. The first graphic for a chain summarises the proportions of errors displayed in the second graphic. The second graphic shows the sequence view annotated by issues in geometry and electron density. Residues are color-coded according to the number of geometric quality criteria for which they contain at least one outlier: green = 0, yellow = 1, orange = 2 and red = 3 or more. A red dot above a residue indicates a poor fit to the electron density ( $\text{RSRZ} > 2$ ). Stretches of 2 or more consecutive residues without any outlier are shown as a green connector. Residues present in the sample, but not in the model, are shown in grey.

- Molecule 1: Glutathione-regulated potassium-efflux system protein kefC, linker, ancillary protein keff



- Molecule 1: Glutathione-regulated potassium-efflux system protein kefC, linker, ancillary protein keff





## 4 Data and refinement statistics

Property	Value	Source
Space group	P 21 21 21	Depositor
Cell constants a, b, c, $\alpha$ , $\beta$ , $\gamma$	64.76 Å 85.85 Å 189.23 Å 90.00° 90.00° 90.00°	Depositor
Resolution (Å)	33.46 – 1.75 33.47 – 1.75	Depositor EDS
% Data completeness (in resolution range)	90.2 (33.46-1.75) 90.2 (33.47-1.75)	Depositor EDS
$R_{merge}$	0.08	Depositor
$R_{sym}$	(Not available)	Depositor
$\langle I/\sigma(I) \rangle$ <sup>1</sup>	3.83 (at 1.75 Å)	Xtriage
Refinement program	REFMAC 5.2.0019	Depositor
R, $R_{free}$	0.209 , 0.234 0.206 , 0.232	Depositor DCC
$R_{free}$ test set	4764 reflections (5.21%)	DCC
Wilson B-factor (Å <sup>2</sup> )	27.3	Xtriage
Anisotropy	0.372	Xtriage
Bulk solvent $k_{sol}$ (e/Å <sup>3</sup> ), $B_{sol}$ (Å <sup>2</sup> )	0.41 , 50.7	EDS
Estimated twinning fraction	No twinning to report.	Xtriage
L-test for twinning <sup>2</sup>	$\langle  L  \rangle = 0.49$ , $\langle L^2 \rangle = 0.32$	Xtriage
Outliers	0 of 96136 reflections	Xtriage
$F_o, F_c$ correlation	0.95	EDS
Total number of atoms	5981	wwPDB-VP
Average B, all atoms (Å <sup>2</sup> )	33.0	wwPDB-VP

Xtriage's analysis on translational NCS is as follows: *The largest off-origin peak in the Patterson function is 3.58% of the height of the origin peak. No significant pseudotranslation is detected.*

<sup>1</sup> Intensities estimated from amplitudes.

<sup>2</sup> Theoretical values of  $\langle |L| \rangle$ ,  $\langle L^2 \rangle$  for acentric reflections are 0.5, 0.375 respectively for untwinned datasets, and 0.333, 0.2 for perfectly twinned datasets.

## 5 Model quality [i](#)

### 5.1 Standard geometry [i](#)

Bond lengths and bond angles in the following residue types are not validated in this section: FMN, AMP, ZN, SO4, GSH

The Z score for a bond length (or angle) is the number of standard deviations the observed value is removed from the expected value. A bond length (or angle) with  $|Z| > 5$  is considered an outlier worth inspection. RMSZ is the root-mean-square of all Z scores of the bond lengths (or angles).

Mol	Chain	Bond lengths		Bond angles	
		RMSZ	$\# Z  > 5$	RMSZ	$\# Z  > 5$
1	A	0.87	1/2778 (0.0%)	0.83	2/3761 (0.1%)
1	B	0.84	0/2925	0.80	0/3958
All	All	0.85	1/5703 (0.0%)	0.81	2/7719 (0.0%)

All (1) bond length outliers are listed below:

Mol	Chain	Res	Type	Atoms	Z	Observed(Å)	Ideal(Å)
1	A	1031	GLU	CB-CG	5.18	1.61	1.52

All (2) bond angle outliers are listed below:

Mol	Chain	Res	Type	Atoms	Z	Observed(°)	Ideal(°)
1	A	499	ASP	CB-CG-OD1	5.92	123.63	118.30
1	A	1079	ASP	CB-CG-OD1	5.47	123.23	118.30

There are no chirality outliers.

There are no planarity outliers.

### 5.2 Too-close contacts [i](#)

In the following table, the Non-H and H(model) columns list the number of non-hydrogen atoms and hydrogen atoms in the chain respectively. The H(added) column lists the number of hydrogen atoms added and optimized by MolProbity. The Clashes column lists the number of clashes within the asymmetric unit, whereas Symm-Clashes lists symmetry related clashes.

Mol	Chain	Non-H	H(model)	H(added)	Clashes	Symm-Clashes
1	A	2707	0	2659	26	0
1	B	2853	0	2809	35	0
2	A	31	0	19	0	0

*Continued on next page...*

*Continued from previous page...*

Mol	Chain	Non-H	H(model)	H(added)	Clashes	Symm-Clashes
2	B	31	0	19	0	0
3	A	23	0	12	0	0
3	B	23	0	12	0	0
4	A	1	0	0	0	0
4	B	1	0	0	0	0
5	B	20	0	14	0	0
6	B	5	0	0	0	0
7	A	142	0	0	0	0
7	B	144	0	0	1	0
All	All	5981	0	5544	56	0

The all-atom clashscore is defined as the number of clashes found per 1000 atoms (including hydrogen atoms). The all-atom clashscore for this structure is 5.

The worst 5 of 56 close contacts within the same asymmetric unit are listed below, sorted by their clash magnitude.

Atom-1	Atom-2	Interatomic distance (Å)	Clash overlap (Å)
1:A:1031:GLU:OE1	1:A:1055:ARG:NH2	2.07	0.88
1:B:501:ASP:OD1	1:B:568:ARG:NH1	2.22	0.73
1:B:485:LYS:HE2	1:B:493:ILE:HD12	1.69	0.73
1:A:1148:THR:HA	1:A:1151:CYS:SG	2.32	0.69
1:B:451:THR:O	1:B:483:MET:SD	2.52	0.67

There are no symmetry-related clashes.

## 5.3 Torsion angles ⓘ

### 5.3.1 Protein backbone ⓘ

In the following table, the Percentiles column shows the percent Ramachandran outliers of the chain as a percentile score with respect to all X-ray entries followed by that with respect to entries of similar resolution.

The Analysed column shows the number of residues for which the backbone conformation was analysed, and the total number of residues.

Mol	Chain	Analysed	Favoured	Allowed	Outliers	Percentiles	
1	A	334/413 (81%)	326 (98%)	7 (2%)	1 (0%)	46	25
1	B	353/413 (86%)	345 (98%)	8 (2%)	0	100	100
All	All	687/826 (83%)	671 (98%)	15 (2%)	1 (0%)	56	36

All (1) Ramachandran outliers are listed below:

Mol	Chain	Res	Type
1	A	1110	GLU

### 5.3.2 Protein sidechains ⓘ

In the following table, the Percentiles column shows the percent sidechain outliers of the chain as a percentile score with respect to all X-ray entries followed by that with respect to entries of similar resolution.

The Analysed column shows the number of residues for which the sidechain conformation was analysed, and the total number of residues.

Mol	Chain	Analysed	Rotameric	Outliers	Percentiles	
1	A	279/340 (82%)	277 (99%)	2 (1%)	88	79
1	B	294/340 (86%)	292 (99%)	2 (1%)	88	79
All	All	573/680 (84%)	569 (99%)	4 (1%)	88	79

All (4) residues with a non-rotameric sidechain are listed below:

Mol	Chain	Res	Type
1	A	430	HIS
1	A	1096	HIS
1	B	1096	HIS
1	B	1157	GLU

Some sidechains can be flipped to improve hydrogen bonding and reduce clashes. There are no such sidechains identified.

### 5.3.3 RNA ⓘ

There are no RNA molecules in this entry.

## 5.4 Non-standard residues in protein, DNA, RNA chains ⓘ

There are no non-standard protein/DNA/RNA residues in this entry.

## 5.5 Carbohydrates ⓘ

There are no carbohydrates in this entry.

## 5.6 Ligand geometry

Of 8 ligands modelled in this entry, 2 are monoatomic - leaving 6 for Mogul analysis.

In the following table, the Counts columns list the number of bonds (or angles) for which Mogul statistics could be retrieved, the number of bonds (or angles) that are observed in the model and the number of bonds (or angles) that are defined in the chemical component dictionary. The Link column lists molecule types, if any, to which the group is linked. The Z score for a bond length (or angle) is the number of standard deviations the observed value is removed from the expected value. A bond length (or angle) with  $|Z| > 2$  is considered an outlier worth inspection. RMSZ is the root-mean-square of all Z scores of the bond lengths (or angles).

Mol	Type	Chain	Res	Link	Bond lengths			Bond angles		
					Counts	RMSZ	# Z  > 2	Counts	RMSZ	# Z  > 2
2	FMN	A	2400	-	32,33,33	1.36	4 (12%)	34,50,50	1.81	9 (26%)
3	AMP	A	2401	-	22,25,25	1.33	3 (13%)	22,38,38	3.03	8 (36%)
5	GSH	B	1	-	13,19,19	3.01	2 (15%)	15,24,24	2.50	4 (26%)
6	SO4	B	1177	-	4,4,4	0.12	0	6,6,6	0.93	0
2	FMN	B	2400	-	32,33,33	1.54	5 (15%)	34,50,50	1.88	5 (14%)
3	AMP	B	2401	-	22,25,25	1.21	2 (9%)	22,38,38	1.99	6 (27%)

In the following table, the Chirals column lists the number of chiral outliers, the number of chiral centers analysed, the number of these observed in the model and the number defined in the chemical component dictionary. Similar counts are reported in the Torsion and Rings columns. '-' means no outliers of that kind were identified.

Mol	Type	Chain	Res	Link	Chirals	Torsions	Rings
2	FMN	A	2400	-	-	0/18/18/18	0/3/3/3
3	AMP	A	2401	-	-	0/6/26/26	0/3/3/3
5	GSH	B	1	-	-	0/18/24/24	0/0/0/0
6	SO4	B	1177	-	-	0/0/0/0	0/0/0/0
2	FMN	B	2400	-	-	0/18/18/18	0/3/3/3
3	AMP	B	2401	-	-	0/6/26/26	0/3/3/3

The worst 5 of 16 bond length outliers are listed below:

Mol	Chain	Res	Type	Atoms	Z	Observed(Å)	Ideal(Å)
3	A	2401	AMP	P-O3P	-2.01	1.47	1.54
2	B	2400	FMN	C9A-N10	2.08	1.41	1.38
3	B	2401	AMP	C2-N3	2.32	1.36	1.32
2	B	2400	FMN	C10-N1	2.78	1.40	1.35
2	A	2400	FMN	C4-N3	2.81	1.38	1.33

The worst 5 of 32 bond angle outliers are listed below:

Mol	Chain	Res	Type	Atoms	Z	Observed( $^{\circ}$ )	Ideal( $^{\circ}$ )
3	A	2401	AMP	N3-C2-N1	-11.16	120.11	128.87
3	B	2401	AMP	N3-C2-N1	-7.01	123.37	128.87
5	B	1	GSH	CA2-CB2-SG2	-6.59	106.75	113.99
2	B	2400	FMN	N3-C2-N1	-4.68	119.81	127.69
2	A	2400	FMN	N3-C2-N1	-4.54	120.05	127.69

There are no chirality outliers.

There are no torsion outliers.

There are no ring outliers.

No monomer is involved in short contacts.

## 5.7 Other polymers [i](#)

There are no such residues in this entry.

## 5.8 Polymer linkage issues [i](#)

There are no chain breaks in this entry.

## 6 Fit of model and data [i](#)

### 6.1 Protein, DNA and RNA chains [i](#)

In the following table, the column labelled ‘#RSRZ> 2’ contains the number (and percentage) of RSRZ outliers, followed by percent RSRZ outliers for the chain as percentile scores relative to all X-ray entries and entries of similar resolution. The OWAB column contains the minimum, median, 95<sup>th</sup> percentile and maximum values of the occupancy-weighted average B-factor per residue. The column labelled ‘Q< 0.9’ lists the number of (and percentage) of residues with an average occupancy less than 0.9.

Mol	Chain	Analysed	<RSRZ>	#RSRZ>2	OWAB(Å <sup>2</sup> )	Q<0.9
1	A	338/413 (81%)	0.90	48 (14%) 4 5	18, 30, 61, 84	0
1	B	357/413 (86%)	0.74	46 (12%) 5 6	18, 30, 59, 83	0
All	All	695/826 (84%)	0.82	94 (13%) 4 6	18, 30, 61, 84	0

The worst 5 of 94 RSRZ outliers are listed below:

Mol	Chain	Res	Type	RSRZ
1	A	1150	ILE	18.6
1	A	1149	PHE	14.1
1	A	1147	CYS	12.9
1	A	1148	THR	11.8
1	A	1151	CYS	10.0

### 6.2 Non-standard residues in protein, DNA, RNA chains [i](#)

There are no non-standard protein/DNA/RNA residues in this entry.

### 6.3 Carbohydrates [i](#)

There are no carbohydrates in this entry.

### 6.4 Ligands [i](#)

In the following table, the Atoms column lists the number of modelled atoms in the group and the number defined in the chemical component dictionary. LLDF column lists the quality of electron density of the group with respect to its neighbouring residues in protein, DNA or RNA chains. The B-factors column lists the minimum, median, 95<sup>th</sup> percentile and maximum values of B factors of atoms in the group. The column labelled ‘Q< 0.9’ lists the number of atoms with occupancy less than 0.9.

Mol	Type	Chain	Res	Atoms	RSCC	RSR	LLDF	B-factors( $\text{\AA}^2$ )	Q<0.9
6	SO4	B	1177	5/5	0.76	0.20	1.08	67,68,71,72	0
3	AMP	B	2401	23/23	0.96	0.15	1.07	23,41,44,45	0
4	ZN	B	2402	1/1	0.98	0.12	0.85	44,44,44,44	0
4	ZN	A	2402	1/1	0.98	0.11	0.20	45,45,45,45	0
2	FMN	B	2400	31/31	0.95	0.13	-0.03	24,32,34,35	0
5	GSH	B	1	20/20	0.89	0.12	-0.20	25,38,48,49	0
2	FMN	A	2400	31/31	0.95	0.09	-0.67	25,34,37,39	0
3	AMP	A	2401	23/23	0.98	0.08	-1.16	19,25,28,31	0

## 6.5 Other polymers [i](#)

There are no such residues in this entry.