



Full wwPDB X-ray Structure Validation Report ⓘ

Feb 1, 2016 – 10:14 AM GMT

PDB ID : 3LAP
Title : The Structure of the Intermediate Complex of the Arginine Repressor from Mycobacterium tuberculosis Bound to its DNA Operator and L-canavanine.
Authors : Cherney, L.T.; Cherney, M.M.; Garen, C.R.; James, M.N.G.; TB Structural Genomics Consortium (TBSGC)
Deposited on : 2010-01-06
Resolution : 2.15 Å(reported)

This is a Full wwPDB X-ray Structure Validation Report for a publicly released PDB entry.
We welcome your comments at validation@mail.wwpdb.org
A user guide is available at
<http://wwpdb.org/validation/2016/XrayValidationReportHelp>
with specific help available everywhere you see the ⓘ symbol.

The following versions of software and data (see [references ⓘ](#)) were used in the production of this report:

MolProbity : 4.02b-467
Mogul : 1.7 (RC4), CSD as536be (2015)
Xtriage (Phenix) : 1.9-1692
EDS : rb-20026688
Percentile statistics : 20151230.v01 (using entries in the PDB archive December 30th 2015)
Refmac : 5.8.0135
CCP4 : 6.5.0
Ideal geometry (proteins) : Engh & Huber (2001)
Ideal geometry (DNA, RNA) : Parkinson et al. (1996)
Validation Pipeline (wwPDB-VP) : trunk26865

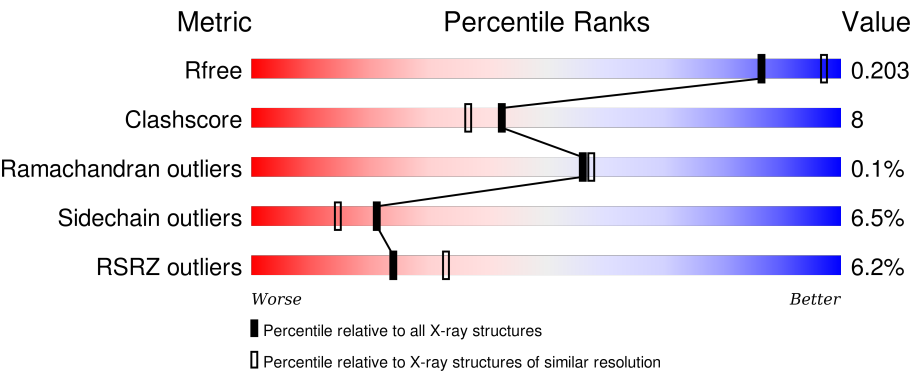
1 Overall quality at a glance i

The following experimental techniques were used to determine the structure:

X-RAY DIFFRACTION

The reported resolution of this entry is 2.15 Å.

Percentile scores (ranging between 0-100) for global validation metrics of the entry are shown in the following graphic. The table shows the number of entries on which the scores are based.



Metric	Whole archive (#Entries)	Similar resolution (#Entries, resolution range(Å))
R _{free}	91344	1045 (2.16-2.16)
Clashscore	102246	1152 (2.16-2.16)
Ramachandran outliers	100387	1131 (2.16-2.16)
Sidechain outliers	100360	1131 (2.16-2.16)
RSRZ outliers	91569	1050 (2.16-2.16)

The table below summarises the geometric issues observed across the polymeric chains and their fit to the electron density. The red, orange, yellow and green segments on the lower bar indicate the fraction of residues that contain outliers for >=3, 2, 1 and 0 types of geometric quality criteria. A grey segment represents the fraction of residues that are not modelled. The numeric value for each fraction is indicated below the corresponding segment, with a dot representing fractions <=5%. The upper red bar (where present) indicates the fraction of residues that have poor fit to the electron density. The numeric value is given above the bar.

Mol	Chain	Length	Quality of chain
1	A	170	<div><div></div><div><div></div><div></div><div></div><div></div></div><div>72%15%•12%</div></div>
1	B	170	<div><div></div><div><div></div><div></div><div></div><div></div></div><div>72%14%•12%</div></div>
1	C	170	<div><div></div><div><div></div><div></div><div></div><div></div></div><div>74%12%•12%</div></div>
1	D	170	<div><div>11%</div><div><div></div><div></div><div></div><div></div></div><div>72%15%•9%</div></div>
1	E	170	<div><div>9%</div><div><div></div><div></div><div></div><div></div></div><div>70%18%•9%</div></div>

Continued on next page...

Continued from previous page...

Mol	Chain	Length	Quality of chain
1	F	170	
2	G	16	
2	I	16	
2	K	16	
3	H	16	
3	J	16	
3	L	16	

The following table lists non-polymeric compounds, carbohydrate monomers and non-standard residues in protein, DNA, RNA chains that are outliers for geometric or electron-density-fit criteria:

Mol	Type	Chain	Res	Chirality	Geometry	Clashes	Electron density
5	SO4	A	171	-	-	X	-
5	SO4	A	172	-	-	X	X
5	SO4	B	172	-	-	X	-
5	SO4	C	171	-	-	-	X
5	SO4	C	172	-	-	X	-
5	SO4	D	171	-	-	-	X
5	SO4	D	172	-	-	-	X

2 Entry composition

There are 6 unique types of molecules in this entry. The entry contains 9356 atoms, of which 0 are hydrogens and 0 are deuteriums.

In the tables below, the ZeroOcc column contains the number of atoms modelled with zero occupancy, the AltConf column contains the number of residues with at least one atom in alternate conformation and the Trace column contains the number of residues modelled with at most 2 atoms.

- Molecule 1 is a protein called Arginine repressor.

Mol	Chain	Residues	Atoms					ZeroOcc	AltConf	Trace
1	A	149	Total	C	N	O	S	0	2	0
			1088	670	200	216	2			
1	B	149	Total	C	N	O	S	0	2	0
			1087	669	200	216	2			
1	C	149	Total	C	N	O	S	0	2	0
			1087	669	200	216	2			
1	D	154	Total	C	N	O	S	0	0	0
			1112	682	206	222	2			
1	E	154	Total	C	N	O	S	0	2	0
			1124	690	209	223	2			
1	F	154	Total	C	N	O	S	0	2	0
			1124	690	209	223	2			

- Molecule 2 is a DNA chain called 5'-D(*TP*TP*GP*CP*AP*TP*AP*AP*CP*GP*AP*TP*GP*CP*AP*A)-3'.

Mol	Chain	Residues	Atoms					ZeroOcc	AltConf	Trace
2	G	16	Total	C	N	O	P	0	0	0
			326	157	62	92	15			
2	I	16	Total	C	N	O	P	0	0	0
			326	157	62	92	15			
2	K	16	Total	C	N	O	P	0	0	0
			326	157	62	92	15			

- Molecule 3 is a DNA chain called 5'-D(*TP*TP*GP*CP*AP*TP*CP*GP*TP*TP*AP*TP*GP*CP*AP*A)-3'.

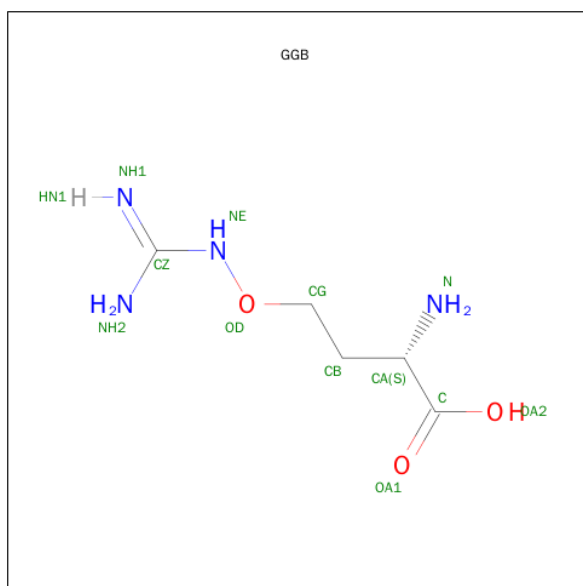
Mol	Chain	Residues	Atoms					ZeroOcc	AltConf	Trace
3	H	16	Total	C	N	O	P	0	0	0
			324	157	56	96	15			
3	J	16	Total	C	N	O	P	0	0	0
			324	157	56	96	15			

Continued on next page...

Continued from previous page...

Mol	Chain	Residues	Atoms					ZeroOcc	AltConf	Trace
3	L	16	Total	C	N	O	P	0	0	0
			324	157	56	96	15			

- Molecule 4 is L-CANAVANINE (three-letter code: GGB) (formula: $C_5H_{12}N_4O_3$).



Mol	Chain	Residues	Atoms				ZeroOcc	AltConf
4	A	1	Total	C	N	O	0	0
			12	5	4	3		
4	B	1	Total	C	N	O	0	0
			12	5	4	3		
4	C	1	Total	C	N	O	0	0
			12	5	4	3		
4	D	1	Total	C	N	O	0	0
			12	5	4	3		
4	E	1	Total	C	N	O	0	0
			12	5	4	3		
4	F	1	Total	C	N	O	0	0
			12	5	4	3		

- Molecule 5 is SULFATE ION (three-letter code: SO4) (formula: O_4S).



Mol	Chain	Residues	Atoms			ZeroOcc	AltConf
5	A	1	Total	O	S	0	0
			5	4	1		
5	A	1	Total	O	S	0	0
			5	4	1		
5	B	1	Total	O	S	0	0
			5	4	1		
5	B	1	Total	O	S	0	0
			5	4	1		
5	C	1	Total	O	S	0	0
			5	4	1		
5	C	1	Total	O	S	0	0
			5	4	1		
5	D	1	Total	O	S	0	0
			5	4	1		
5	D	1	Total	O	S	0	0
			5	4	1		

- Molecule 6 is water.

Mol	Chain	Residues	Atoms		ZeroOcc	AltConf
6	A	99	Total	O	0	0
			99	99		
6	B	103	Total	O	0	0
			103	103		
6	C	105	Total	O	0	0
			105	105		
6	D	65	Total	O	0	0
			65	65		

Continued on next page...

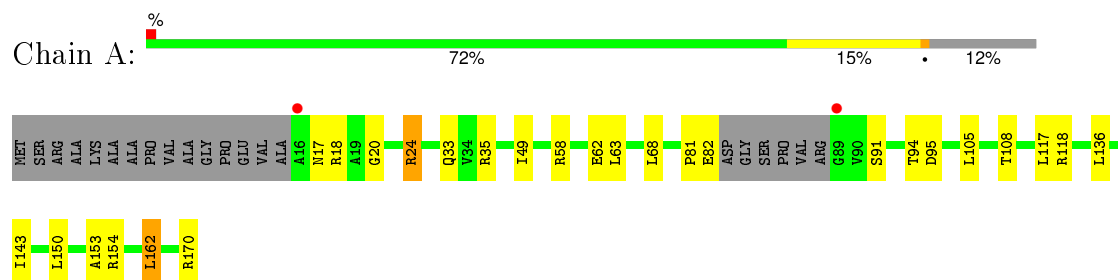
Continued from previous page...

Mol	Chain	Residues	Atoms		ZeroOcc	AltConf
6	E	71	Total 71	O 71	0	0
6	F	68	Total 68	O 68	0	0
6	G	25	Total 25	O 25	0	0
6	H	23	Total 23	O 23	0	0
6	I	21	Total 21	O 21	0	0
6	K	31	Total 31	O 31	0	0
6	J	29	Total 29	O 29	0	0
6	L	32	Total 32	O 32	0	0

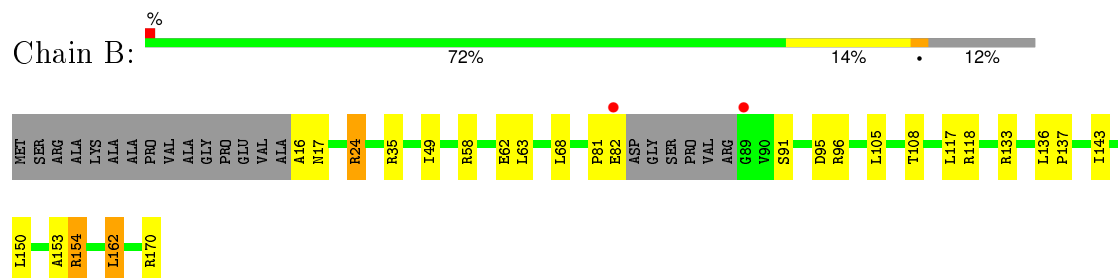
3 Residue-property plots

These plots are drawn for all protein, RNA and DNA chains in the entry. The first graphic for a chain summarises the proportions of errors displayed in the second graphic. The second graphic shows the sequence view annotated by issues in geometry and electron density. Residues are color-coded according to the number of geometric quality criteria for which they contain at least one outlier: green = 0, yellow = 1, orange = 2 and red = 3 or more. A red dot above a residue indicates a poor fit to the electron density ($RSRZ > 2$). Stretches of 2 or more consecutive residues without any outlier are shown as a green connector. Residues present in the sample, but not in the model, are shown in grey.

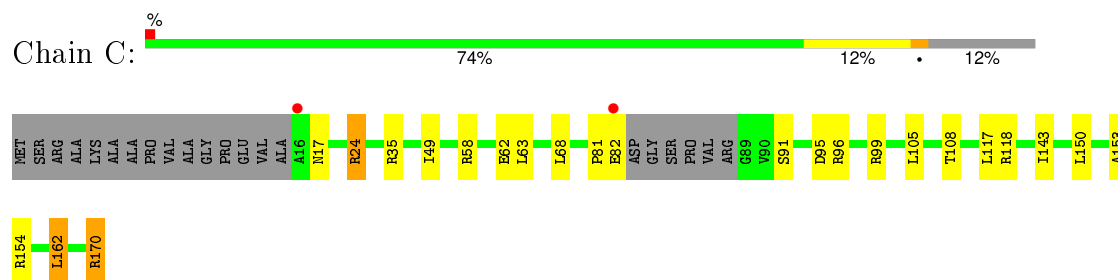
- Molecule 1: Arginine repressor



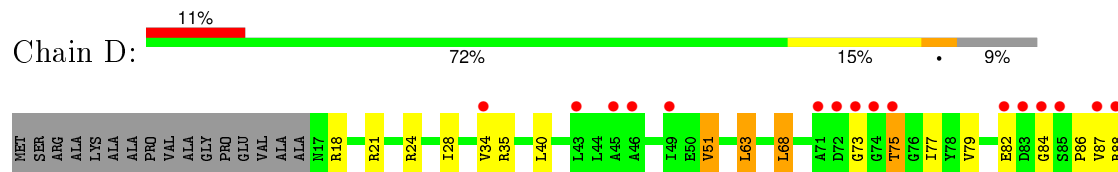
- Molecule 1: Arginine repressor



- Molecule 1: Arginine repressor



- Molecule 1: Arginine repressor

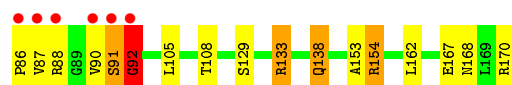
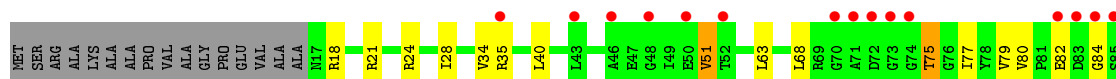




- Molecule 1: Arginine repressor



- Molecule 1: Arginine repressor



- Molecule 2: 5'-D(*TP*TP*GP*CP*AP*TP*AP*AP*CP*GP*AP*TP*GP*CP*AP*A)-3'



- Molecule 2: 5'-D(*TP*TP*GP*CP*AP*TP*AP*AP*CP*GP*AP*TP*GP*CP*AP*A)-3'



- Molecule 2: 5'-D(*TP*TP*GP*CP*AP*TP*AP*AP*CP*GP*AP*TP*GP*CP*AP*A)-3'

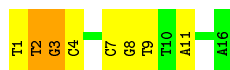


- Molecule 3: 5'-D(*TP*TP*GP*CP*AP*TP*CP*GP*TP*TP*AP*TP*GP*CP*AP*A)-3'

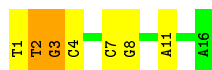




- Molecule 3: 5'-D(*TP*TP*GP*CP*AP*TP*CP*GP*TP*TP*AP*TP*GP*CP*AP*A)-3'



- Molecule 3: 5'-D(*TP*TP*GP*CP*AP*TP*CP*GP*TP*TP*AP*TP*GP*CP*AP*A)-3'



4 Data and refinement statistics

Property	Value	Source
Space group	C 1 2 1	Depositor
Cell constants a, b, c, α , β , γ	184.75Å 106.53Å 117.75Å 90.00° 121.40° 90.00°	Depositor
Resolution (Å)	39.00 – 2.15 39.05 – 2.15	Depositor EDS
% Data completeness (in resolution range)	91.5 (39.00-2.15) 91.2 (39.05-2.15)	Depositor EDS
R_{merge}	0.07	Depositor
R_{sym}	0.07	Depositor
$\langle I/\sigma(I) \rangle$ ¹	2.38 (at 2.16Å)	Xtriage
Refinement program	PHENIX (phenix.refine: 1.4_58)	Depositor
R, R_{free}	0.184 , 0.205 0.183 , 0.203	Depositor DCC
R_{free} test set	4830 reflections (5.25%)	DCC
Wilson B-factor (Å ²)	39.2	Xtriage
Anisotropy	0.223	Xtriage
Bulk solvent k_{sol} (e/Å ³), B_{sol} (Å ²)	0.34 , 46.3	EDS
Estimated twinning fraction	0.438 for 1/2*h-3/2*k,-1/2*h-1/2*k,-1/2*h +1/2*k-l 0.437 for 1/2*h+3/2*k,1/2*h-1/2*k,-1/2*h- 1/2*k-l	Xtriage
L-test for twinning ²	$\langle L \rangle = 0.50$, $\langle L^2 \rangle = 0.33$	Xtriage
Outliers	1 of 96769 reflections (0.001%)	Xtriage
F_o, F_c correlation	0.96	EDS
Total number of atoms	9356	wwPDB-VP
Average B, all atoms (Å ²)	48.0	wwPDB-VP

Xtriage's analysis on translational NCS is as follows: *The largest off-origin peak in the Patterson function is 3.78% of the height of the origin peak. No significant pseudotranslation is detected.*

¹Intensities estimated from amplitudes.

²Theoretical values of $\langle |L| \rangle$, $\langle L^2 \rangle$ for acentric reflections are 0.5, 0.375 respectively for untwinned datasets, and 0.333, 0.2 for perfectly twinned datasets.

5 Model quality ⓘ

5.1 Standard geometry ⓘ

Bond lengths and bond angles in the following residue types are not validated in this section: SO4, GGB

The Z score for a bond length (or angle) is the number of standard deviations the observed value is removed from the expected value. A bond length (or angle) with $|Z| > 5$ is considered an outlier worth inspection. RMSZ is the root-mean-square of all Z scores of the bond lengths (or angles).

Mol	Chain	Bond lengths		Bond angles	
		RMSZ	# $ Z > 5$	RMSZ	# $ Z > 5$
1	A	0.44	0/1101	1.07	9/1492 (0.6%)
1	B	0.47	0/1101	1.34	11/1492 (0.7%)
1	C	0.44	0/1101	0.99	9/1492 (0.6%)
1	D	0.40	0/1121	1.04	8/1521 (0.5%)
1	E	0.39	0/1140	1.01	7/1547 (0.5%)
1	F	0.36	0/1140	0.81	7/1547 (0.5%)
2	G	0.73	0/366	1.36	5/563 (0.9%)
2	I	0.74	0/366	1.36	5/563 (0.9%)
2	K	0.71	0/366	1.37	4/563 (0.7%)
3	H	0.72	0/362	1.48	6/557 (1.1%)
3	J	0.73	0/362	1.52	7/557 (1.3%)
3	L	0.75	0/362	1.49	4/557 (0.7%)
All	All	0.51	0/8888	1.17	82/12451 (0.7%)

Chiral center outliers are detected by calculating the chiral volume of a chiral center and verifying if the center is modelled as a planar moiety or with the opposite hand. A planarity outlier is detected by checking planarity of atoms in a peptide group, atoms in a mainchain group or atoms of a sidechain that are expected to be planar.

Mol	Chain	#Chirality outliers	#Planarity outliers
1	D	0	1
1	E	0	1
1	F	0	1
All	All	0	3

There are no bond length outliers.

All (82) bond angle outliers are listed below:

Mol	Chain	Res	Type	Atoms	Z	Observed(°)	Ideal(°)
1	B	154	ARG	NE-CZ-NH2	-23.92	108.34	120.30

Continued on next page...

Continued from previous page...

Mol	Chain	Res	Type	Atoms	Z	Observed(°)	Ideal(°)
1	B	154	ARG	NE-CZ-NH1	21.00	130.80	120.30
1	E	170	ARG	NE-CZ-NH1	-18.67	110.97	120.30
1	A	24	ARG	NE-CZ-NH2	18.60	129.60	120.30
1	A	24	ARG	NE-CZ-NH1	-18.34	111.13	120.30
1	E	170	ARG	NE-CZ-NH2	17.21	128.91	120.30
1	B	170	ARG	NE-CZ-NH2	17.05	128.83	120.30
1	B	170	ARG	NE-CZ-NH1	-16.99	111.81	120.30
1	C	118	ARG	NE-CZ-NH1	-15.92	112.34	120.30
1	C	118	ARG	NE-CZ-NH2	15.75	128.17	120.30
1	D	154	ARG	NE-CZ-NH1	-15.13	112.73	120.30
1	D	133	ARG	NE-CZ-NH1	-14.70	112.95	120.30
1	D	154	ARG	NE-CZ-NH2	14.36	127.48	120.30
1	D	133	ARG	NE-CZ-NH2	13.92	127.26	120.30
1	B	154	ARG	CD-NE-CZ	10.84	138.78	123.60
3	L	11	DA	O4'-C1'-N9	-9.86	101.10	108.00
1	B	118	ARG	NE-CZ-NH2	-9.58	115.51	120.30
1	E	154	ARG	NE-CZ-NH2	-9.56	115.52	120.30
1	A	118	ARG	NE-CZ-NH2	-9.47	115.56	120.30
1	A	118	ARG	NE-CZ-NH1	9.39	125.00	120.30
3	H	11	DA	O4'-C1'-N9	-9.22	101.55	108.00
1	B	118	ARG	NE-CZ-NH1	9.21	124.91	120.30
1	D	170	ARG	NE-CZ-NH2	-8.84	115.88	120.30
1	A	24	ARG	CD-NE-CZ	8.83	135.96	123.60
3	J	11	DA	O4'-C1'-N9	-8.76	101.87	108.00
1	E	154	ARG	NE-CZ-NH1	8.76	124.68	120.30
1	F	133	ARG	NE-CZ-NH2	-8.66	115.97	120.30
1	B	170	ARG	CD-NE-CZ	8.56	135.59	123.60
1	D	170	ARG	NE-CZ-NH1	8.56	124.58	120.30
1	F	170	ARG	NE-CZ-NH2	-8.55	116.03	120.30
1	E	170	ARG	CD-NE-CZ	8.40	135.35	123.60
1	F	170	ARG	NE-CZ-NH1	8.39	124.50	120.30
1	E	133	ARG	NE-CZ-NH2	-8.27	116.17	120.30
1	B	24	ARG	NE-CZ-NH2	-8.16	116.22	120.30
1	C	170	ARG	NE-CZ-NH2	-8.14	116.23	120.30
1	B	24	ARG	NE-CZ-NH1	7.89	124.25	120.30
1	C	170	ARG	NE-CZ-NH1	7.87	124.24	120.30
1	E	133	ARG	NE-CZ-NH1	7.75	124.17	120.30
1	C	118	ARG	CD-NE-CZ	7.66	134.33	123.60
1	C	154	ARG	NE-CZ-NH1	-7.64	116.48	120.30
1	F	133	ARG	NE-CZ-NH1	7.61	124.11	120.30
1	C	24	ARG	NE-CZ-NH2	-7.51	116.54	120.30
1	C	24	ARG	NE-CZ-NH1	7.42	124.01	120.30

Continued on next page...

Continued from previous page...

Mol	Chain	Res	Type	Atoms	Z	Observed(°)	Ideal(°)
1	A	170	ARG	NE-CZ-NH2	-7.39	116.61	120.30
1	A	154	ARG	NE-CZ-NH1	-7.21	116.69	120.30
1	A	170	ARG	NE-CZ-NH1	7.21	123.91	120.30
1	F	154	ARG	NE-CZ-NH2	-7.20	116.70	120.30
2	K	3	DG	O4'-C1'-N9	-7.18	102.97	108.00
2	I	3	DG	O4'-C1'-N9	-7.17	102.98	108.00
2	G	3	DG	O4'-C1'-N9	-7.06	103.06	108.00
2	K	8	DA	O4'-C1'-N9	-7.04	103.07	108.00
1	F	154	ARG	NE-CZ-NH1	7.01	123.81	120.30
1	D	154	ARG	CD-NE-CZ	7.01	133.41	123.60
3	L	2	DT	O4'-C1'-N1	-6.90	103.17	108.00
3	H	2	DT	O4'-C1'-N1	-6.86	103.20	108.00
3	J	3	DG	O4'-C1'-N9	-6.81	103.23	108.00
3	J	2	DT	O4'-C1'-N1	-6.76	103.26	108.00
1	D	133	ARG	CD-NE-CZ	6.61	132.85	123.60
2	I	8	DA	O4'-C1'-N9	-6.47	103.47	108.00
3	H	3	DG	O4'-C1'-N9	-6.42	103.50	108.00
3	L	3	DG	O4'-C1'-N9	-6.33	103.57	108.00
2	G	8	DA	O4'-C1'-N9	-6.29	103.60	108.00
2	I	4	DC	O4'-C1'-N1	-5.87	103.89	108.00
1	A	154	ARG	NE-CZ-NH2	5.84	123.22	120.30
1	C	154	ARG	NE-CZ-NH2	5.73	123.16	120.30
3	L	4	DC	O4'-C1'-N1	-5.70	104.01	108.00
3	H	4	DC	O4'-C1'-N1	-5.59	104.09	108.00
2	K	4	DC	O4'-C1'-N1	-5.56	104.11	108.00
2	G	4	DC	O4'-C1'-N1	-5.43	104.20	108.00
2	G	2	DT	P-O3'-C3'	5.31	126.08	119.70
2	K	2	DT	C1'-O4'-C4'	-5.25	104.85	110.10
3	H	2	DT	N3-C4-O4	5.25	123.05	119.90
3	H	2	DT	C5-C4-O4	-5.24	121.23	124.90
3	J	4	DC	O4'-C1'-N1	-5.24	104.33	108.00
3	J	9	DT	N3-C4-O4	5.20	123.02	119.90
2	I	2	DT	C1'-O4'-C4'	-5.17	104.93	110.10
2	I	11	DA	O4'-C1'-N9	-5.12	104.41	108.00
3	J	2	DT	C5-C4-O4	-5.09	121.34	124.90
2	G	2	DT	C1'-O4'-C4'	-5.05	105.05	110.10
1	B	118	ARG	CD-NE-CZ	5.03	130.64	123.60
3	J	2	DT	N3-C4-O4	5.02	122.91	119.90
1	F	92	GLY	N-CA-C	5.01	125.61	113.10

There are no chirality outliers.

All (3) planarity outliers are listed below:

Mol	Chain	Res	Type	Group
1	D	91	SER	Peptide
1	E	91	SER	Peptide
1	F	91	SER	Peptide

5.2 Too-close contacts

In the following table, the Non-H and H(model) columns list the number of non-hydrogen atoms and hydrogen atoms in the chain respectively. The H(added) column lists the number of hydrogen atoms added and optimized by MolProbity. The Clashes column lists the number of clashes within the asymmetric unit, whereas Symm-Clashes lists symmetry related clashes.

Mol	Chain	Non-H	H(model)	H(added)	Clashes	Symm-Clashes
1	A	1088	0	1108	24	0
1	B	1087	0	1109	21	0
1	C	1087	0	1109	21	0
1	D	1112	0	1133	28	0
1	E	1124	0	1146	27	0
1	F	1124	0	1146	25	0
2	G	326	0	182	1	0
2	I	326	0	182	2	0
2	K	326	0	182	1	0
3	H	324	0	184	3	0
3	J	324	0	184	4	0
3	L	324	0	184	4	0
4	A	12	0	11	0	0
4	B	12	0	11	0	0
4	C	12	0	11	0	0
4	D	12	0	11	0	0
4	E	12	0	10	0	0
4	F	12	0	11	0	0
5	A	10	0	0	6	0
5	B	10	0	0	2	0
5	C	10	0	0	3	0
5	D	10	0	0	1	0
6	A	99	0	0	1	0
6	B	103	0	0	4	0
6	C	105	0	0	3	0
6	D	65	0	0	1	0
6	E	71	0	0	0	0
6	F	68	0	0	2	0
6	G	25	0	0	0	0
6	H	23	0	0	0	0
6	I	21	0	0	0	0

Continued on next page...

Continued from previous page...

Mol	Chain	Non-H	H(model)	H(added)	Clashes	Symm-Clashes
6	J	29	0	0	0	0
6	K	31	0	0	0	0
6	L	32	0	0	0	0
All	All	9356	0	7914	138	0

The all-atom clashscore is defined as the number of clashes found per 1000 atoms (including hydrogen atoms). The all-atom clashscore for this structure is 8.

All (138) close contacts within the same asymmetric unit are listed below, sorted by their clash magnitude.

Atom-1	Atom-2	Interatomic distance (Å)	Clash overlap (Å)
1:C:82:GLU:H	1:E:88:ARG:HB3	1.38	0.88
1:B:82:GLU:H	1:F:88:ARG:HB3	1.41	0.85
1:A:82:GLU:H	1:D:88:ARG:HB3	1.40	0.83
1:E:18:ARG:HG3	1:E:21:ARG:NH1	1.99	0.78
1:F:18:ARG:HG3	1:F:21:ARG:NH1	1.98	0.78
1:D:18:ARG:HG3	1:D:21:ARG:NH1	2.00	0.76
1:A:94:THR:HG23	5:A:171:SO4:O3	1.86	0.76
1:C:153:ALA:HB2	1:C:162:LEU:HD22	1.68	0.75
1:B:153:ALA:HB2	1:B:162:LEU:HD22	1.68	0.75
1:A:153:ALA:HB2	1:A:162:LEU:HD22	1.69	0.74
1:F:86:PRO:HG2	1:F:91:SER:HB2	1.70	0.72
1:A:94:THR:HG23	5:A:171:SO4:S	2.28	0.72
1:C:82:GLU:HG3	1:E:88:ARG:HD3	1.72	0.72
1:A:17:ASN:HB3	5:A:172:SO4:O4	1.91	0.71
1:C:17:ASN:HB3	5:C:171:SO4:O3	1.90	0.71
1:A:82:GLU:HG3	1:D:88:ARG:HD3	1.73	0.70
1:B:95:ASP:HB3	6:B:599:HOH:O	1.93	0.69
1:B:82:GLU:HG3	1:F:88:ARG:HD3	1.76	0.67
1:D:91:SER:N	1:D:92:GLY:HA3	2.10	0.67
1:D:86:PRO:HG2	1:D:91:SER:HB2	1.78	0.66
1:E:86:PRO:HG2	1:E:91:SER:HB2	1.77	0.66
1:C:82:GLU:N	1:E:88:ARG:HB3	2.09	0.66
1:E:91:SER:N	1:E:92:GLY:HA3	2.10	0.65
1:C:82:GLU:H	1:E:88:ARG:CB	2.09	0.64
1:A:82:GLU:N	1:D:88:ARG:HB3	2.13	0.64
1:E:90:VAL:HB	1:E:92:GLY:HA3	1.81	0.62
1:B:82:GLU:N	1:F:88:ARG:HB3	2.13	0.62
1:D:90:VAL:HB	1:D:92:GLY:HA3	1.81	0.62
1:E:108:THR:OG1	1:E:167:GLU:HG2	1.99	0.61
1:D:82:GLU:C	1:D:84:GLY:H	2.05	0.60

Continued on next page...

Continued from previous page...

Atom-1	Atom-2	Interatomic distance (Å)	Clash overlap (Å)
1:F:154:ARG:NH2	6:F:252:HOH:O	2.35	0.60
1:F:108:THR:OG1	1:F:167:GLU:HG2	2.01	0.60
1:E:82:GLU:C	1:E:84:GLY:H	2.05	0.60
1:A:95:ASP:HB3	6:A:328:HOH:O	2.02	0.60
1:F:34:VAL:HG11	1:F:40:LEU:HB2	1.85	0.59
1:F:82:GLU:C	1:F:84:GLY:H	2.04	0.59
1:C:81:PRO:HB3	1:E:88:ARG:HD2	1.85	0.59
1:A:82:GLU:H	1:D:88:ARG:CB	2.12	0.59
1:D:108:THR:OG1	1:D:167:GLU:HG2	2.02	0.59
1:B:82:GLU:H	1:F:88:ARG:CB	2.14	0.58
1:E:34:VAL:HG11	1:E:40:LEU:HB2	1.85	0.58
1:C:170:ARG:HD3	6:C:380:HOH:O	2.03	0.58
1:D:34:VAL:HG11	1:D:40:LEU:HB2	1.85	0.58
1:B:81:PRO:HB3	1:F:88:ARG:HD2	1.85	0.57
1:A:81:PRO:HB3	1:D:88:ARG:HD2	1.85	0.57
1:D:129:SER:O	1:D:133:ARG:HG3	2.05	0.57
1:F:153:ALA:HB2	1:F:162:LEU:HD22	1.87	0.57
1:B:137:PRO:O	1:B:154:ARG:HD2	2.05	0.57
1:A:20:GLY:O	1:A:24:ARG:HG2	2.06	0.56
1:D:153:ALA:HB2	1:D:162:LEU:HD22	1.88	0.55
1:C:17:ASN:HB2	5:C:172:SO4:O1	2.07	0.54
1:C:96:ARG:HD3	6:C:672:HOH:O	2.07	0.54
1:C:58:ARG:O	1:C:62[A]:GLU:HG3	2.09	0.53
1:E:18:ARG:HG3	1:E:21:ARG:HH12	1.72	0.53
1:E:153:ALA:HB2	1:E:162:LEU:HD22	1.91	0.52
1:A:58:ARG:O	1:A:62[A]:GLU:HG3	2.10	0.52
3:L:7:DC:H2"	3:L:8:DG:C8	2.45	0.52
1:D:18:ARG:HG3	1:D:21:ARG:HH12	1.74	0.52
1:B:16:ALA:HB1	5:B:172:SO4:O3	2.11	0.51
1:C:170:ARG:NH2	6:C:663:HOH:O	2.43	0.51
1:F:35:ARG:NH2	1:F:75:THR:O	2.44	0.51
1:B:133:ARG:NH2	6:B:444:HOH:O	2.43	0.51
1:B:58:ARG:O	1:B:62[A]:GLU:HG3	2.11	0.51
1:F:18:ARG:HG3	1:F:21:ARG:HH12	1.72	0.51
1:F:35:ARG:HG2	1:F:77:ILE:HG22	1.93	0.51
1:A:143:ILE:HG13	1:C:150:LEU:HD13	1.92	0.50
3:H:7:DC:H2"	3:H:8:DG:C8	2.46	0.50
1:F:21:ARG:CD	1:F:51:VAL:HG11	2.41	0.50
1:D:35:ARG:NH2	1:D:75:THR:O	2.45	0.50
1:A:94:THR:HG23	5:A:171:SO4:O2	2.11	0.50
1:D:35:ARG:HG2	1:D:77:ILE:HG22	1.94	0.50

Continued on next page...

Continued from previous page...

Atom-1	Atom-2	Interatomic distance (Å)	Clash overlap (Å)
1:C:17:ASN:N	5:C:172:SO4:O4	2.41	0.50
1:E:35:ARG:NH2	1:E:75:THR:O	2.46	0.49
1:D:21:ARG:CD	1:D:51:VAL:HG11	2.42	0.49
1:E:21:ARG:CD	1:E:51:VAL:HG11	2.43	0.49
1:E:35:ARG:HG2	1:E:77:ILE:HG22	1.94	0.49
1:C:82:GLU:CG	1:E:88:ARG:HD3	2.43	0.48
1:A:33:GLN:OE1	5:D:171:SO4:O1	2.30	0.48
1:C:108:THR:HG22	1:C:117:LEU:HD22	1.96	0.48
1:B:133:ARG:NH2	6:B:208:HOH:O	2.46	0.48
1:F:90:VAL:HB	1:F:92:GLY:HA3	1.95	0.47
1:B:150:LEU:HD13	1:C:143:ILE:HG13	1.95	0.47
3:J:7:DC:H2''	3:J:8:DG:C8	2.49	0.47
1:B:24:ARG:CZ	1:B:49:ILE:HD11	2.45	0.47
1:A:94:THR:N	5:A:171:SO4:O3	2.46	0.47
1:F:24:ARG:O	1:F:28:ILE:HG13	2.15	0.47
2:I:6:DT:H2''	2:I:7:DA:C8	2.50	0.46
1:C:82:GLU:HG3	1:E:88:ARG:CD	2.44	0.46
1:A:150:LEU:HD13	1:B:143:ILE:HG13	1.97	0.46
1:D:73:GLY:HA2	6:D:530:HOH:O	2.15	0.46
2:G:6:DT:H2''	2:G:7:DA:C8	2.51	0.46
1:E:82:GLU:C	1:E:84:GLY:N	2.70	0.46
1:A:18:ARG:HB3	5:A:172:SO4:O1	2.16	0.45
1:F:82:GLU:C	1:F:84:GLY:N	2.69	0.45
1:A:108:THR:HG22	1:A:117:LEU:HD22	1.99	0.45
1:A:81:PRO:O	1:A:82:GLU:HB2	2.17	0.45
1:E:24:ARG:O	1:E:28:ILE:HG13	2.16	0.45
2:K:6:DT:H2''	2:K:7:DA:C8	2.52	0.45
1:F:21:ARG:HD2	1:F:51:VAL:HG11	1.99	0.44
1:D:82:GLU:C	1:D:84:GLY:N	2.70	0.44
1:A:82:GLU:CG	1:D:88:ARG:HD3	2.45	0.44
1:D:21:ARG:HD2	1:D:51:VAL:HG11	1.99	0.44
1:B:17:ASN:HB2	5:B:172:SO4:O4	2.16	0.44
1:F:129:SER:O	1:F:133:ARG:HG3	2.17	0.44
1:A:136:LEU:HG	1:A:136:LEU:H	1.60	0.44
3:J:2:DT:H2''	3:J:3:DG:C5'	2.48	0.44
1:B:96:ARG:HD3	6:B:600:HOH:O	2.18	0.44
1:B:81:PRO:O	1:B:82:GLU:HB2	2.18	0.43
1:A:82:GLU:HG3	1:D:88:ARG:CD	2.46	0.43
1:C:24:ARG:CZ	1:C:49:ILE:HD11	2.49	0.43
1:D:24:ARG:O	1:D:28:ILE:HG13	2.17	0.43
1:A:24:ARG:CZ	1:A:49:ILE:HD11	2.49	0.43

Continued on next page...

Continued from previous page...

Atom-1	Atom-2	Interatomic distance (Å)	Clash overlap (Å)
1:B:136:LEU:H	1:B:136:LEU:HG	1.63	0.43
1:E:21:ARG:HD2	1:E:51:VAL:HG11	2.00	0.43
3:L:2:DT:H2''	3:L:3:DG:C5'	2.48	0.43
1:C:81:PRO:O	1:C:82:GLU:HB2	2.18	0.42
1:E:129:SER:O	1:E:133:ARG:HG3	2.18	0.42
1:F:138:GLN:CD	1:F:138:GLN:H	2.22	0.42
1:B:82:GLU:CG	1:F:88:ARG:HD3	2.48	0.42
1:B:108:THR:HG22	1:B:117:LEU:HD22	2.00	0.42
3:J:2:DT:H2''	3:J:3:DG:H5'	2.02	0.42
2:I:9:DC:H2''	2:I:10:DG:O5'	2.20	0.42
1:D:63:LEU:HA	1:D:63:LEU:HD12	1.88	0.42
1:E:87:VAL:HG13	1:E:88:ARG:HG3	2.01	0.41
1:F:87:VAL:HG13	1:F:88:ARG:HG3	2.01	0.41
1:D:87:VAL:HG13	1:D:88:ARG:HG3	2.02	0.41
3:H:1:DT:C6	3:H:2:DT:H72	2.56	0.41
1:F:133:ARG:NH2	6:F:388:HOH:O	2.54	0.41
3:L:2:DT:H2''	3:L:3:DG:H5'	2.03	0.41
3:H:2:DT:H2''	3:H:3:DG:C5'	2.50	0.41
1:E:58:ARG:O	1:E:62:GLU:HG3	2.20	0.41
1:D:91:SER:N	1:D:92:GLY:CA	2.83	0.41
1:E:90:VAL:C	1:E:92:GLY:HA3	2.41	0.41
3:J:1:DT:C6	3:J:2:DT:H72	2.56	0.40
3:L:1:DT:C6	3:L:2:DT:H72	2.57	0.40
1:C:95:ASP:O	1:C:99:ARG:HB2	2.21	0.40
1:D:68:LEU:HA	1:D:68:LEU:HD22	1.88	0.40
1:E:77:ILE:O	1:E:77:ILE:HG13	2.21	0.40

There are no symmetry-related clashes.

5.3 Torsion angles [i](#)

5.3.1 Protein backbone [i](#)

In the following table, the Percentiles column shows the percent Ramachandran outliers of the chain as a percentile score with respect to all X-ray entries followed by that with respect to entries of similar resolution.

The Analysed column shows the number of residues for which the backbone conformation was analysed, and the total number of residues.

Mol	Chain	Analysed	Favoured	Allowed	Outliers	Percentiles	
1	A	147/170 (86%)	147 (100%)	0	0	100	100
1	B	147/170 (86%)	147 (100%)	0	0	100	100
1	C	147/170 (86%)	146 (99%)	1 (1%)	0	100	100
1	D	152/170 (89%)	147 (97%)	5 (3%)	0	100	100
1	E	154/170 (91%)	148 (96%)	6 (4%)	0	100	100
1	F	154/170 (91%)	148 (96%)	5 (3%)	1 (1%)	30	21
All	All	901/1020 (88%)	883 (98%)	17 (2%)	1 (0%)	56	57

All (1) Ramachandran outliers are listed below:

Mol	Chain	Res	Type
1	F	92	GLY

5.3.2 Protein sidechains ⓘ

In the following table, the Percentiles column shows the percent sidechain outliers of the chain as a percentile score with respect to all X-ray entries followed by that with respect to entries of similar resolution.

The Analysed column shows the number of residues for which the sidechain conformation was analysed, and the total number of residues.

Mol	Chain	Analysed	Rotameric	Outliers	Percentiles	
1	A	110/122 (90%)	104 (94%)	6 (6%)	27	21
1	B	110/122 (90%)	104 (94%)	6 (6%)	27	21
1	C	110/122 (90%)	104 (94%)	6 (6%)	27	21
1	D	113/122 (93%)	106 (94%)	7 (6%)	23	17
1	E	115/122 (94%)	105 (91%)	10 (9%)	13	7
1	F	115/122 (94%)	105 (91%)	10 (9%)	13	7
All	All	673/732 (92%)	628 (93%)	45 (7%)	21	13

All (45) residues with a non-rotameric sidechain are listed below:

Mol	Chain	Res	Type
1	A	35	ARG
1	A	63	LEU
1	A	68	LEU
1	A	91	SER

Continued on next page...

Continued from previous page...

Mol	Chain	Res	Type
1	A	105	LEU
1	A	162	LEU
1	B	35	ARG
1	B	63	LEU
1	B	68	LEU
1	B	91	SER
1	B	105	LEU
1	B	162	LEU
1	C	35	ARG
1	C	63	LEU
1	C	68	LEU
1	C	91	SER
1	C	105	LEU
1	C	162	LEU
1	D	51	VAL
1	D	63	LEU
1	D	68	LEU
1	D	75	THR
1	D	79	VAL
1	D	105	LEU
1	D	138	GLN
1	E	51	VAL
1	E	63	LEU
1	E	68	LEU
1	E	75	THR
1	E	79	VAL
1	E	80	VAL
1	E	105	LEU
1	E	138	GLN
1	E	168[A]	ASN
1	E	168[B]	ASN
1	F	51	VAL
1	F	63	LEU
1	F	68	LEU
1	F	75	THR
1	F	79	VAL
1	F	80	VAL
1	F	105	LEU
1	F	138	GLN
1	F	168[A]	ASN
1	F	168[B]	ASN

Some sidechains can be flipped to improve hydrogen bonding and reduce clashes. All (3) such

sidechains are listed below:

Mol	Chain	Res	Type
1	D	17	ASN
1	E	17	ASN
1	F	17	ASN

5.3.3 RNA ⓘ

There are no RNA molecules in this entry.

5.4 Non-standard residues in protein, DNA, RNA chains ⓘ

There are no non-standard protein/DNA/RNA residues in this entry.

5.5 Carbohydrates ⓘ

There are no carbohydrates in this entry.

5.6 Ligand geometry ⓘ

14 ligands are modelled in this entry.

In the following table, the Counts columns list the number of bonds (or angles) for which Mogul statistics could be retrieved, the number of bonds (or angles) that are observed in the model and the number of bonds (or angles) that are defined in the chemical component dictionary. The Link column lists molecule types, if any, to which the group is linked. The Z score for a bond length (or angle) is the number of standard deviations the observed value is removed from the expected value. A bond length (or angle) with $|Z| > 2$ is considered an outlier worth inspection. RMSZ is the root-mean-square of all Z scores of the bond lengths (or angles).

Mol	Type	Chain	Res	Link	Bond lengths			Bond angles		
					Counts	RMSZ	$\# Z > 2$	Counts	RMSZ	$\# Z > 2$
5	SO4	A	171	-	4,4,4	0.32	0	6,6,6	0.16	0
5	SO4	A	172	-	4,4,4	0.35	0	6,6,6	0.26	0
4	GGB	A	200	-	4,11,11	6.54	1 (25%)	1,13,13	1.31	0
5	SO4	B	171	-	4,4,4	0.16	0	6,6,6	0.16	0
5	SO4	B	172	-	4,4,4	0.20	0	6,6,6	0.15	0
4	GGB	B	200	-	4,11,11	6.10	1 (25%)	1,13,13	0.82	0
5	SO4	C	171	-	4,4,4	0.35	0	6,6,6	0.22	0
5	SO4	C	172	-	4,4,4	0.24	0	6,6,6	0.10	0
4	GGB	C	200	-	4,11,11	6.18	1 (25%)	1,13,13	1.60	0

Mol	Type	Chain	Res	Link	Bond lengths			Bond angles		
					Counts	RMSZ	# Z > 2	Counts	RMSZ	# Z > 2
5	SO4	D	171	-	4,4,4	0.24	0	6,6,6	0.37	0
5	SO4	D	172	-	4,4,4	0.17	0	6,6,6	0.18	0
4	GGB	D	200	-	4,11,11	6.39	1 (25%)	1,13,13	1.17	0
4	GGB	E	200	-	4,11,11	5.81	1 (25%)	1,13,13	0.98	0
4	GGB	F	200	-	4,11,11	6.00	1 (25%)	1,13,13	0.56	0

In the following table, the Chirals column lists the number of chiral outliers, the number of chiral centers analysed, the number of these observed in the model and the number defined in the chemical component dictionary. Similar counts are reported in the Torsion and Rings columns. '-' means no outliers of that kind were identified.

Mol	Type	Chain	Res	Link	Chirals	Torsions	Rings
5	SO4	A	171	-	-	0/0/0/0	0/0/0/0
5	SO4	A	172	-	-	0/0/0/0	0/0/0/0
4	GGB	A	200	-	-	0/5/11/11	0/0/0/0
5	SO4	B	171	-	-	0/0/0/0	0/0/0/0
5	SO4	B	172	-	-	0/0/0/0	0/0/0/0
4	GGB	B	200	-	-	0/5/11/11	0/0/0/0
5	SO4	C	171	-	-	0/0/0/0	0/0/0/0
5	SO4	C	172	-	-	0/0/0/0	0/0/0/0
4	GGB	C	200	-	-	0/5/11/11	0/0/0/0
5	SO4	D	171	-	-	0/0/0/0	0/0/0/0
5	SO4	D	172	-	-	0/0/0/0	0/0/0/0
4	GGB	D	200	-	-	0/5/11/11	0/0/0/0
4	GGB	E	200	-	-	0/5/11/11	0/0/0/0
4	GGB	F	200	-	-	0/5/11/11	0/0/0/0

All (6) bond length outliers are listed below:

Mol	Chain	Res	Type	Atoms	Z	Observed(Å)	Ideal(Å)
4	A	200	GGB	OD-NE	-13.03	1.30	1.45
4	D	200	GGB	OD-NE	-12.73	1.30	1.45
4	C	200	GGB	OD-NE	-12.30	1.31	1.45
4	B	200	GGB	OD-NE	-12.16	1.31	1.45
4	F	200	GGB	OD-NE	-11.96	1.31	1.45
4	E	200	GGB	OD-NE	-11.58	1.32	1.45

There are no bond angle outliers.

There are no chirality outliers.

There are no torsion outliers.

There are no ring outliers.

6 monomers are involved in 12 short contacts:

Mol	Chain	Res	Type	Clashes	Symm-Clashes
5	A	171	SO4	4	0
5	A	172	SO4	2	0
5	B	172	SO4	2	0
5	C	171	SO4	1	0
5	C	172	SO4	2	0
5	D	171	SO4	1	0

5.7 Other polymers [i](#)

There are no such residues in this entry.

5.8 Polymer linkage issues [i](#)

There are no chain breaks in this entry.

6 Fit of model and data ⓘ

6.1 Protein, DNA and RNA chains ⓘ

In the following table, the column labelled ‘#RSRZ> 2’ contains the number (and percentage) of RSRZ outliers, followed by percent RSRZ outliers for the chain as percentile scores relative to all X-ray entries and entries of similar resolution. The OWAB column contains the minimum, median, 95th percentile and maximum values of the occupancy-weighted average B-factor per residue. The column labelled ‘Q< 0.9’ lists the number of (and percentage) of residues with an average occupancy less than 0.9.

Mol	Chain	Analysed	<RSRZ>	#RSRZ>2	OWAB(Å ²)	Q<0.9
1	A	149/170 (87%)	0.10	2 (1%) 79 84	24, 35, 65, 109	0
1	B	149/170 (87%)	0.14	2 (1%) 79 84	24, 35, 65, 110	0
1	C	149/170 (87%)	0.14	2 (1%) 79 84	23, 35, 65, 110	0
1	D	154/170 (90%)	0.66	19 (12%) 5 9	25, 50, 112, 139	0
1	E	154/170 (90%)	0.65	16 (10%) 8 14	25, 50, 112, 139	0
1	F	154/170 (90%)	0.79	21 (13%) 4 7	24, 50, 112, 139	0
2	G	16/16 (100%)	-0.47	0 100 100	34, 50, 66, 66	0
2	I	16/16 (100%)	-0.50	0 100 100	35, 49, 66, 67	0
2	K	16/16 (100%)	-0.56	0 100 100	35, 50, 67, 68	0
3	H	16/16 (100%)	-0.54	0 100 100	34, 51, 64, 65	0
3	J	16/16 (100%)	-0.48	0 100 100	34, 51, 64, 65	0
3	L	16/16 (100%)	-0.64	0 100 100	35, 51, 65, 67	0
All	All	1005/1116 (90%)	0.33	62 (6%) 24 33	23, 41, 86, 139	0

All (62) RSRZ outliers are listed below:

Mol	Chain	Res	Type	RSRZ
1	D	90	VAL	9.2
1	F	87	VAL	8.3
1	E	85	SER	8.3
1	D	74	GLY	8.2
1	F	85	SER	7.0
1	E	91	SER	7.0
1	F	71	ALA	6.8
1	E	87	VAL	6.8
1	E	90	VAL	6.5
1	F	73	GLY	6.4
1	D	91	SER	6.3

Continued on next page...

Continued from previous page...

Mol	Chain	Res	Type	RSRZ
1	E	84	GLY	6.1
1	D	84	GLY	6.1
1	F	70	GLY	5.9
1	F	91	SER	5.6
1	D	87	VAL	5.3
1	C	16	ALA	5.0
1	A	89	GLY	4.9
1	E	89	GLY	4.8
1	F	74	GLY	4.6
1	E	71	ALA	4.5
1	D	83	ASP	4.4
1	E	92	GLY	4.4
1	E	72	ASP	4.3
1	F	90	VAL	4.2
1	F	83	ASP	4.2
1	E	88	ARG	4.1
1	F	84	GLY	4.1
1	D	82	GLU	3.7
1	F	72	ASP	3.6
1	D	88	ARG	3.6
1	E	83	ASP	3.4
1	F	46	ALA	3.4
1	D	73	GLY	3.3
1	F	48	GLY	3.2
1	D	43	LEU	3.2
1	F	92	GLY	3.1
1	F	88	ARG	3.1
1	F	86	PRO	2.9
1	C	82	GLU	2.9
1	E	73	GLY	2.9
1	D	75	THR	2.9
1	D	72	ASP	2.8
1	F	50	GLU	2.8
1	E	48	GLY	2.7
1	E	82	GLU	2.5
1	D	85	SER	2.5
1	D	49	ILE	2.5
1	D	71	ALA	2.4
1	F	52	THR	2.4
1	B	89	GLY	2.4
1	D	34	VAL	2.4
1	D	46	ALA	2.4

Continued on next page...

Continued from previous page...

Mol	Chain	Res	Type	RSRZ
1	E	86	PRO	2.4
1	D	89	GLY	2.4
1	F	35	ARG	2.3
1	F	82	GLU	2.2
1	D	45	ALA	2.2
1	F	43	LEU	2.2
1	A	16	ALA	2.1
1	B	82	GLU	2.1
1	E	70	GLY	2.0

6.2 Non-standard residues in protein, DNA, RNA chains [i](#)

There are no non-standard protein/DNA/RNA residues in this entry.

6.3 Carbohydrates [i](#)

There are no carbohydrates in this entry.

6.4 Ligands [i](#)

In the following table, the Atoms column lists the number of modelled atoms in the group and the number defined in the chemical component dictionary. LLDF column lists the quality of electron density of the group with respect to its neighbouring residues in protein, DNA or RNA chains. The B-factors column lists the minimum, median, 95th percentile and maximum values of B factors of atoms in the group. The column labelled 'Q< 0.9' lists the number of atoms with occupancy less than 0.9.

Mol	Type	Chain	Res	Atoms	RSCC	RSR	LLDF	B-factors(Å ²)	Q<0.9
5	SO4	D	171	5/5	0.77	0.24	5.88	33,35,43,56	5
5	SO4	A	172	5/5	0.97	0.27	5.16	40,50,63,64	5
5	SO4	D	172	5/5	0.89	0.25	4.58	48,55,56,71	5
5	SO4	C	171	5/5	0.94	0.28	3.77	41,49,59,63	5
5	SO4	C	172	5/5	0.75	0.32	1.93	59,60,77,80	5
5	SO4	B	172	5/5	0.94	0.18	1.66	54,67,69,83	5
5	SO4	A	171	5/5	0.97	0.23	1.07	43,44,62,64	5
4	GGB	A	200	12/12	0.98	0.11	-0.36	23,26,32,37	0
4	GGB	D	200	12/12	0.97	0.11	-0.50	22,26,32,34	0
5	SO4	B	171	5/5	0.92	0.11	-0.57	48,51,52,71	5
4	GGB	E	200	12/12	0.97	0.09	-1.15	24,28,31,32	0
4	GGB	C	200	12/12	0.98	0.10	-1.16	23,28,37,39	0

Continued on next page...

Continued from previous page...

Mol	Type	Chain	Res	Atoms	RSCC	RSR	LLDF	B-factors(\AA^2)	Q<0.9
4	GGB	B	200	12/12	0.97	0.09	-1.25	22,26,32,35	0
4	GGB	F	200	12/12	0.95	0.09	-1.51	25,29,33,33	0

6.5 Other polymers [i](#)

There are no such residues in this entry.