



Full wwPDB X-ray Structure Validation Report ⓘ

Feb 1, 2016 – 10:13 AM GMT

PDB ID : 3LBZ
Title : Crystal Structure of the BCL6 BTB domain complexed with the small molecule inhibitor 79-6
Authors : Ghetu, A.F.; Prive, G.G.
Deposited on : 2010-01-08
Resolution : 2.30 Å(reported)

This is a Full wwPDB X-ray Structure Validation Report for a publicly released PDB entry.
We welcome your comments at validation@mail.wwpdb.org
A user guide is available at
<http://wwpdb.org/validation/2016/XrayValidationReportHelp>
with specific help available everywhere you see the ⓘ symbol.

The following versions of software and data (see [references ⓘ](#)) were used in the production of this report:

MolProbity : 4.02b-467
Mogul : 1.7 (RC4), CSD as536be (2015)
Xtriage (Phenix) : 1.9-1692
EDS : rb-20026688
Percentile statistics : 20151230.v01 (using entries in the PDB archive December 30th 2015)
Refmac : 5.8.0135
CCP4 : 6.5.0
Ideal geometry (proteins) : Engh & Huber (2001)
Ideal geometry (DNA, RNA) : Parkinson et al. (1996)
Validation Pipeline (wwPDB-VP) : trunk26865

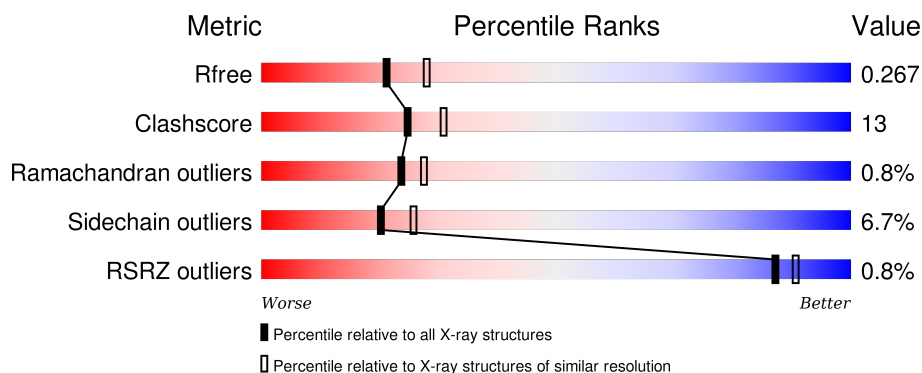
1 Overall quality at a glance

The following experimental techniques were used to determine the structure:

X-RAY DIFFRACTION

The reported resolution of this entry is 2.30 Å.

Percentile scores (ranging between 0-100) for global validation metrics of the entry are shown in the following graphic. The table shows the number of entries on which the scores are based.



Metric	Whole archive (#Entries)	Similar resolution (#Entries, resolution range(Å))
R_{free}	91344	3852 (2.30-2.30)
Clashscore	102246	4452 (2.30-2.30)
Ramachandran outliers	100387	4410 (2.30-2.30)
Sidechain outliers	100360	4409 (2.30-2.30)
RSRZ outliers	91569	3857 (2.30-2.30)

The table below summarises the geometric issues observed across the polymeric chains and their fit to the electron density. The red, orange, yellow and green segments on the lower bar indicate the fraction of residues that contain outliers for ≥ 3 , 2, 1 and 0 types of geometric quality criteria. A grey segment represents the fraction of residues that are not modelled. The numeric value for each fraction is indicated below the corresponding segment, with a dot representing fractions $\leq 5\%$. The upper red bar (where present) indicates the fraction of residues that have poor fit to the electron density. The numeric value is given above the bar.

Mol	Chain	Length	Quality of chain
1	A	127	<div> <div>%</div> <div> <div></div> <div>69%</div> <div>25%</div> <div>..</div> </div> </div>
1	B	127	<div> <div>%</div> <div> <div></div> <div>72%</div> <div>20%</div> <div>.</div> </div> </div>

The following table lists non-polymeric compounds, carbohydrate monomers and non-standard residues in protein, DNA, RNA chains that are outliers for geometric or electron-density-fit criteria:

Mol	Type	Chain	Res	Chirality	Geometry	Clashes	Electron density
3	Z89	A	201	-	-	X	X
3	Z89	A	202	-	-	-	X

2 Entry composition

There are 4 unique types of molecules in this entry. The entry contains 2098 atoms, of which 0 are hydrogens and 0 are deuteriums.

In the tables below, the ZeroOcc column contains the number of atoms modelled with zero occupancy, the AltConf column contains the number of residues with at least one atom in alternate conformation and the Trace column contains the number of residues modelled with at most 2 atoms.

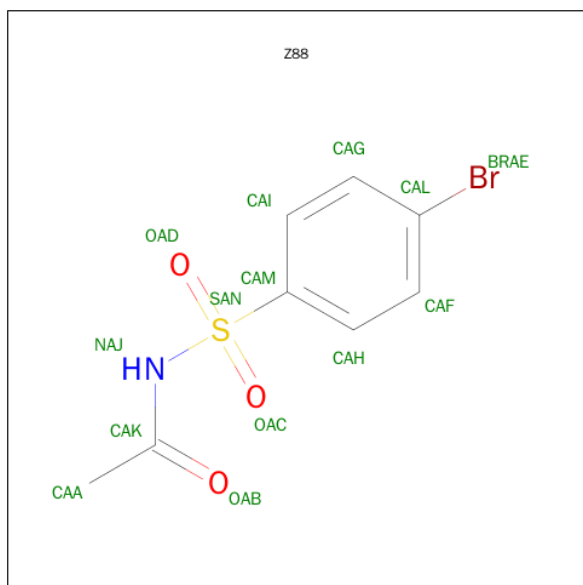
- Molecule 1 is a protein called B-cell lymphoma 6 protein.

Mol	Chain	Residues	Atoms					ZeroOcc	AltConf	Trace
1	A	122	Total	C	N	O	S	0	0	0
			985	624	175	178	8			
1	B	122	Total	C	N	O	S	0	0	0
			985	624	175	178	8			

There are 10 discrepancies between the modelled and reference sequences:

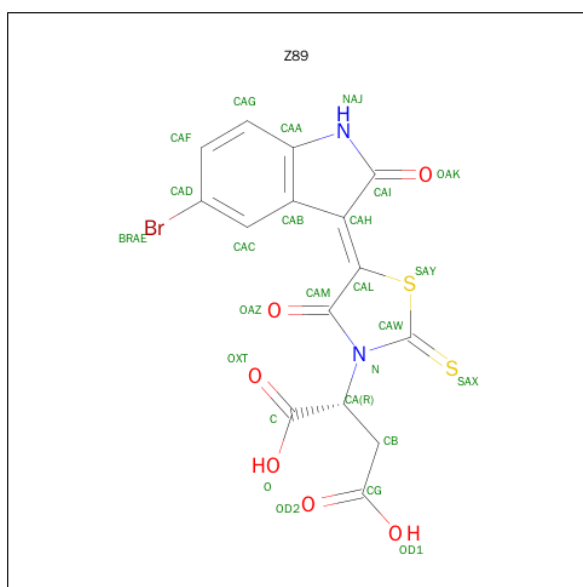
Chain	Residue	Modelled	Actual	Comment	Reference
A	3	GLY	-	EXPRESSION TAG	UNP P41182
A	4	SER	-	EXPRESSION TAG	UNP P41182
A	8	GLN	CYS	ENGINEERED	UNP P41182
A	67	ARG	CYS	ENGINEERED	UNP P41182
A	84	ASN	CYS	ENGINEERED	UNP P41182
B	3	GLY	-	EXPRESSION TAG	UNP P41182
B	4	SER	-	EXPRESSION TAG	UNP P41182
B	8	GLN	CYS	ENGINEERED	UNP P41182
B	67	ARG	CYS	ENGINEERED	UNP P41182
B	84	ASN	CYS	ENGINEERED	UNP P41182

- Molecule 2 is N-[(4-BROMOPHENYL)SULFONYL]ACETAMIDE (three-letter code: Z88) (formula: C₈H₈BrNO₃S).



Mol	Chain	Residues	Atoms						ZeroOcc	AltConf
2	A	1	Total	Br	C	N	O	S	0	0
			14	1	8	1	3	1		
2	B	1	Total	Br	C	N	O	S	0	0
			14	1	8	1	3	1		

- Molecule 3 is (2R)-2-[(5Z)-5-(5-BROMO-2-OXO-1,2-DIHYDRO-3H-INDOL-3-YLIDENE)-4-OXO-2-THIOXO-1,3-THIAZOLIDIN-3-YL]BUTANEDIOIC ACID (three-letter code: Z89) (formula: C₁₅H₉BrN₂O₆S₂).



Mol	Chain	Residues	Atoms						ZeroOcc	AltConf
3	A	1	Total	Br	C	N	O	S	0	0
			26	1	15	2	6	2		

Continued on next page...

Continued from previous page...

Mol	Chain	Residues	Atoms						ZeroOcc	AltConf
3	A	1	Total	Br	C	N	O	S	0	0
			26	1	15	2	6	2		
3	B	1	Total	Br	C	N	O	S	0	0
			26	1	15	2	6	2		

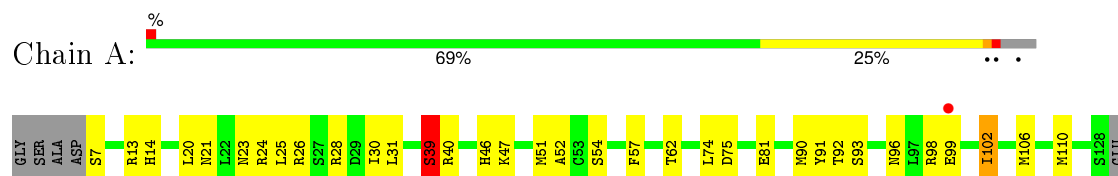
- Molecule 4 is water.

Mol	Chain	Residues	Atoms		ZeroOcc	AltConf
4	A	9	Total	O	0	0
			9	9		
4	B	13	Total	O	0	0
			13	13		

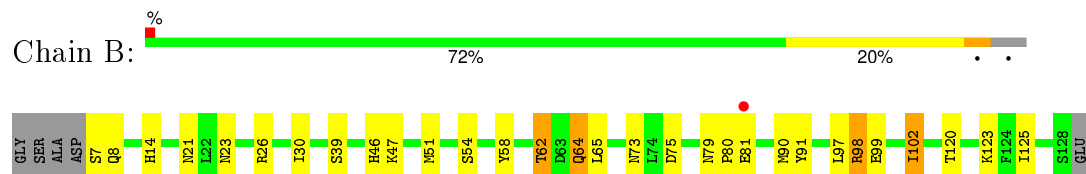
3 Residue-property plots [i](#)

These plots are drawn for all protein, RNA and DNA chains in the entry. The first graphic for a chain summarises the proportions of errors displayed in the second graphic. The second graphic shows the sequence view annotated by issues in geometry and electron density. Residues are color-coded according to the number of geometric quality criteria for which they contain at least one outlier: green = 0, yellow = 1, orange = 2 and red = 3 or more. A red dot above a residue indicates a poor fit to the electron density ($RSRZ > 2$). Stretches of 2 or more consecutive residues without any outlier are shown as a green connector. Residues present in the sample, but not in the model, are shown in grey.

- Molecule 1: B-cell lymphoma 6 protein



- Molecule 1: B-cell lymphoma 6 protein



4 Data and refinement statistics

Property	Value	Source
Space group	C 1 2 1	Depositor
Cell constants a, b, c, α , β , γ	101.71Å 38.61Å 78.82Å 90.00° 114.70° 90.00°	Depositor
Resolution (Å)	46.23 – 2.30 46.20 – 2.30	Depositor EDS
% Data completeness (in resolution range)	98.7 (46.23-2.30) 98.7 (46.20-2.30)	Depositor EDS
R_{merge}	0.07	Depositor
R_{sym}	0.05	Depositor
$\langle I/\sigma(I) \rangle$ ¹	7.10 (at 2.29Å)	Xtriage
Refinement program	REFMAC 5.2.0019	Depositor
R, R_{free}	0.213 , 0.269 0.213 , 0.267	Depositor DCC
R_{free} test set	605 reflections (5.10%)	DCC
Wilson B-factor (Å ²)	37.5	Xtriage
Anisotropy	0.010	Xtriage
Bulk solvent k_{sol} (e/Å ³), B_{sol} (Å ²)	0.34 , 41.4	EDS
Estimated twinning fraction	No twinning to report.	Xtriage
L-test for twinning ²	$\langle L \rangle = 0.49$, $\langle L^2 \rangle = 0.33$	Xtriage
Outliers	1 of 12478 reflections (0.008%)	Xtriage
F_o, F_c correlation	0.94	EDS
Total number of atoms	2098	wwPDB-VP
Average B, all atoms (Å ²)	42.0	wwPDB-VP

Xtriage's analysis on translational NCS is as follows: *The largest off-origin peak in the Patterson function is 12.58% of the height of the origin peak. No significant pseudotranslation is detected.*

¹Intensities estimated from amplitudes.

²Theoretical values of $\langle |L| \rangle$, $\langle L^2 \rangle$ for acentric reflections are 0.5, 0.375 respectively for untwinned datasets, and 0.333, 0.2 for perfectly twinned datasets.

5 Model quality [i](#)

5.1 Standard geometry [i](#)

Bond lengths and bond angles in the following residue types are not validated in this section: Z89, Z88

The Z score for a bond length (or angle) is the number of standard deviations the observed value is removed from the expected value. A bond length (or angle) with $|Z| > 5$ is considered an outlier worth inspection. RMSZ is the root-mean-square of all Z scores of the bond lengths (or angles).

Mol	Chain	Bond lengths		Bond angles	
		RMSZ	$\# Z > 5$	RMSZ	$\# Z > 5$
1	A	1.33	2/999 (0.2%)	1.12	1/1347 (0.1%)
1	B	1.39	0/999	1.10	1/1347 (0.1%)
All	All	1.36	2/1998 (0.1%)	1.11	2/2694 (0.1%)

All (2) bond length outliers are listed below:

Mol	Chain	Res	Type	Atoms	Z	Observed(Å)	Ideal(Å)
1	A	13	ARG	CG-CD	5.40	1.65	1.51
1	A	57	PHE	CE2-CZ	5.29	1.47	1.37

All (2) bond angle outliers are listed below:

Mol	Chain	Res	Type	Atoms	Z	Observed(°)	Ideal(°)
1	A	54	SER	N-CA-CB	-5.54	102.19	110.50
1	B	65	LEU	CA-CB-CG	5.42	127.77	115.30

There are no chirality outliers.

There are no planarity outliers.

5.2 Too-close contacts [i](#)

In the following table, the Non-H and H(model) columns list the number of non-hydrogen atoms and hydrogen atoms in the chain respectively. The H(added) column lists the number of hydrogen atoms added and optimized by MolProbity. The Clashes column lists the number of clashes within the asymmetric unit, whereas Symm-Clashes lists symmetry related clashes.

Mol	Chain	Non-H	H(model)	H(added)	Clashes	Symm-Clashes
1	A	985	0	1008	22	0
1	B	985	0	1008	27	0

Continued on next page...

Continued from previous page...

Mol	Chain	Non-H	H(model)	H(added)	Clashes	Symm-Clashes
2	A	14	0	8	0	0
2	B	14	0	8	4	0
3	A	52	0	14	13	0
3	B	26	0	7	5	0
4	A	9	0	0	0	0
4	B	13	0	0	0	0
All	All	2098	0	2053	53	0

The all-atom clashscore is defined as the number of clashes found per 1000 atoms (including hydrogen atoms). The all-atom clashscore for this structure is 13.

All (53) close contacts within the same asymmetric unit are listed below, sorted by their clash magnitude.

Atom-1	Atom-2	Interatomic distance (Å)	Clash overlap (Å)
3:A:202:Z89:HAC	3:A:202:Z89:OAZ	1.29	1.30
3:A:201:Z89:HAC	3:A:201:Z89:OAZ	1.36	1.21
3:A:202:Z89:CAC	3:A:202:Z89:OAZ	2.17	0.91
3:A:201:Z89:OAZ	3:A:201:Z89:CAC	2.22	0.87
1:B:64:GLN:OE1	1:B:64:GLN:HA	1.87	0.74
1:B:58:TYR:O	1:B:62:THR:HB	1.89	0.73
1:A:23:ASN:HD21	1:A:26:ARG:HH21	1.40	0.67
1:B:46:HIS:HD2	1:B:91:TYR:OH	1.78	0.67
1:B:47:LYS:O	1:B:51:MET:HG3	1.98	0.63
1:B:102:ILE:HD12	1:B:125:ILE:HD11	1.81	0.62
1:B:23:ASN:HD21	1:B:26:ARG:HH21	1.50	0.60
1:A:102:ILE:HD13	1:A:102:ILE:O	2.01	0.60
1:A:90:MET:O	1:B:14:HIS:HE1	1.83	0.59
1:A:47:LYS:O	1:A:51:MET:HG3	2.04	0.58
1:A:20:LEU:O	1:A:24:ARG:HG3	2.04	0.58
1:A:106:MET:O	1:A:110:MET:HG3	2.05	0.56
1:A:46:HIS:HD2	1:A:91:TYR:OH	1.88	0.56
1:B:102:ILE:O	1:B:102:ILE:HD13	2.06	0.55
1:A:14:HIS:HE1	1:B:90:MET:O	1.91	0.54
3:B:203:Z89:HAC	3:B:203:Z89:OAZ	2.09	0.52
1:A:21:ASN:HB3	3:A:201:Z89:HAG	1.90	0.52
3:B:203:Z89:SAY	3:B:203:Z89:OAK	2.69	0.50
1:B:46:HIS:CD2	1:B:91:TYR:OH	2.62	0.49
1:A:51:MET:O	3:A:202:Z89:NAJ	2.46	0.49
1:A:21:ASN:HB3	3:A:201:Z89:CAG	2.43	0.49
3:A:202:Z89:CAM	3:A:202:Z89:HAC	2.29	0.47
3:A:201:Z89:C	3:A:201:Z89:SAX	3.02	0.46

Continued on next page...

Continued from previous page...

Atom-1	Atom-2	Interatomic distance (Å)	Clash overlap (Å)
1:B:123:LYS:CE	2:B:200:Z88:HAA	2.46	0.46
1:B:120:THR:OG1	2:B:200:Z88:HAAB	2.15	0.45
1:A:39:SER:HB2	1:A:40:ARG:H	1.55	0.45
1:B:123:LYS:HE3	2:B:200:Z88:HAA	1.99	0.45
1:A:23:ASN:HD21	1:A:26:ARG:NH2	2.13	0.45
1:A:30:ILE:O	1:A:46:HIS:HE1	2.00	0.45
1:B:75:ASP:HB2	3:B:203:Z89:CAA	2.47	0.44
1:A:31:LEU:HD12	1:B:51:MET:SD	2.58	0.43
1:A:28:ARG:NH1	3:A:201:Z89:BRAE	3.07	0.43
1:A:96:ASN:HA	1:B:8:GLN:HG2	1.99	0.43
1:A:52:ALA:HA	3:A:202:Z89:HAG	1.99	0.43
1:B:73:ASN:HB2	3:B:203:Z89:HBA	2.00	0.43
1:A:26:ARG:HD3	1:A:91:TYR:CE1	2.54	0.42
1:B:23:ASN:ND2	1:B:26:ARG:HH21	2.17	0.42
1:B:98:ARG:O	1:B:102:ILE:HB	2.20	0.42
1:B:79:ASN:HA	1:B:80:PRO:HD3	1.83	0.42
3:A:202:Z89:CAG	1:B:21:ASN:HB3	2.50	0.42
1:A:25:LEU:HG	3:A:201:Z89:HAF	2.03	0.41
1:B:75:ASP:HB2	3:B:203:Z89:NAJ	2.35	0.41
1:B:97:LEU:HA	1:B:97:LEU:HD23	1.91	0.41
1:B:102:ILE:C	1:B:102:ILE:HD13	2.41	0.41
1:A:92:THR:O	1:A:93:SER:HB2	2.21	0.41
1:B:30:ILE:O	1:B:46:HIS:HE1	2.05	0.41
1:B:102:ILE:CD1	1:B:125:ILE:HD11	2.49	0.40
1:B:120:THR:HG23	2:B:200:Z88:HAAB	2.02	0.40
1:A:74:LEU:O	1:A:75:ASP:C	2.60	0.40

There are no symmetry-related clashes.

5.3 Torsion angles [i](#)

5.3.1 Protein backbone [i](#)

In the following table, the Percentiles column shows the percent Ramachandran outliers of the chain as a percentile score with respect to all X-ray entries followed by that with respect to entries of similar resolution.

The Analysed column shows the number of residues for which the backbone conformation was analysed, and the total number of residues.

Mol	Chain	Analysed	Favoured	Allowed	Outliers	Percentiles	
1	A	120/127 (94%)	116 (97%)	3 (2%)	1 (1%)	24	27
1	B	120/127 (94%)	115 (96%)	4 (3%)	1 (1%)	24	27
All	All	240/254 (94%)	231 (96%)	7 (3%)	2 (1%)	24	27

All (2) Ramachandran outliers are listed below:

Mol	Chain	Res	Type
1	B	39	SER
1	A	39	SER

5.3.2 Protein sidechains ⓘ

In the following table, the Percentiles column shows the percent sidechain outliers of the chain as a percentile score with respect to all X-ray entries followed by that with respect to entries of similar resolution.

The Analysed column shows the number of residues for which the sidechain conformation was analysed, and the total number of residues.

Mol	Chain	Analysed	Rotameric	Outliers	Percentiles	
1	A	112/115 (97%)	105 (94%)	7 (6%)	22	29
1	B	112/115 (97%)	104 (93%)	8 (7%)	18	23
All	All	224/230 (97%)	209 (93%)	15 (7%)	20	26

All (15) residues with a non-rotameric sidechain are listed below:

Mol	Chain	Res	Type
1	A	7	SER
1	A	39	SER
1	A	62	THR
1	A	81	GLU
1	A	98	ARG
1	A	99	GLU
1	A	102	ILE
1	B	7	SER
1	B	54	SER
1	B	62	THR
1	B	64	GLN
1	B	81	GLU
1	B	98	ARG
1	B	99	GLU

Continued on next page...

Continued from previous page...

Mol	Chain	Res	Type
1	B	102	ILE

Some sidechains can be flipped to improve hydrogen bonding and reduce clashes. All (5) such sidechains are listed below:

Mol	Chain	Res	Type
1	A	10	GLN
1	A	23	ASN
1	A	46	HIS
1	B	23	ASN
1	B	46	HIS

5.3.3 RNA [i](#)

There are no RNA molecules in this entry.

5.4 Non-standard residues in protein, DNA, RNA chains [i](#)

There are no non-standard protein/DNA/RNA residues in this entry.

5.5 Carbohydrates [i](#)

There are no carbohydrates in this entry.

5.6 Ligand geometry [i](#)

5 ligands are modelled in this entry.

In the following table, the Counts columns list the number of bonds (or angles) for which Mogul statistics could be retrieved, the number of bonds (or angles) that are observed in the model and the number of bonds (or angles) that are defined in the chemical component dictionary. The Link column lists molecule types, if any, to which the group is linked. The Z score for a bond length (or angle) is the number of standard deviations the observed value is removed from the expected value. A bond length (or angle) with $|Z| > 2$ is considered an outlier worth inspection. RMSZ is the root-mean-square of all Z scores of the bond lengths (or angles).

Mol	Type	Chain	Res	Link	Bond lengths			Bond angles		
					Counts	RMSZ	# Z > 2	Counts	RMSZ	# Z > 2
2	Z88	A	200	-	14,14,14	3.13	3 (21%)	20,20,20	3.99	9 (45%)
3	Z89	A	201	-	20,28,28	2.21	5 (25%)	28,42,42	4.41	17 (60%)

Mol	Type	Chain	Res	Link	Bond lengths			Bond angles		
					Counts	RMSZ	# Z > 2	Counts	RMSZ	# Z > 2
3	Z89	A	202	-	20,28,28	2.15	6 (30%)	28,42,42	4.73	17 (60%)
2	Z88	B	200	-	14,14,14	3.58	3 (21%)	20,20,20	3.47	10 (50%)
3	Z89	B	203	-	20,28,28	2.18	6 (30%)	28,42,42	3.05	12 (42%)

In the following table, the Chirals column lists the number of chiral outliers, the number of chiral centers analysed, the number of these observed in the model and the number defined in the chemical component dictionary. Similar counts are reported in the Torsion and Rings columns. '-' means no outliers of that kind were identified.

Mol	Type	Chain	Res	Link	Chirals	Torsions	Rings
2	Z88	A	200	-	-	2/11/11/11	0/1/1/1
3	Z89	A	201	-	-	0/7/44/44	0/3/3/3
3	Z89	A	202	-	-	0/7/44/44	0/3/3/3
2	Z88	B	200	-	-	2/11/11/11	0/1/1/1
3	Z89	B	203	-	-	0/7/44/44	0/3/3/3

All (23) bond length outliers are listed below:

Mol	Chain	Res	Type	Atoms	Z	Observed(Å)	Ideal(Å)
2	B	200	Z88	CAM-SAN	-10.75	1.60	1.76
2	A	200	Z88	CAM-SAN	-9.98	1.61	1.76
2	B	200	Z88	SAN-NAJ	-5.56	1.53	1.64
3	A	201	Z89	CAH-CAI	-5.00	1.38	1.50
2	B	200	Z88	CAK-NAJ	-4.94	1.32	1.38
3	A	202	Z89	CAH-CAI	-4.78	1.39	1.50
2	A	200	Z88	SAN-NAJ	-4.45	1.55	1.64
3	A	202	Z89	CAB-CAH	-4.28	1.36	1.46
3	B	203	Z89	CAH-CAI	-3.62	1.41	1.50
3	B	203	Z89	CAW-N	-3.33	1.32	1.37
3	A	201	Z89	CAB-CAH	-3.10	1.39	1.46
3	A	202	Z89	CAI-NAJ	-3.04	1.33	1.36
3	B	203	Z89	CAB-CAH	-2.55	1.40	1.46
2	A	200	Z88	CAK-NAJ	-2.14	1.35	1.38
3	A	202	Z89	CAM-CAL	-2.03	1.42	1.48
3	A	201	Z89	OAK-CAI	2.56	1.28	1.23
3	B	203	Z89	OAK-CAI	3.16	1.29	1.23
3	A	202	Z89	OAZ-CAM	3.21	1.29	1.23
3	A	201	Z89	OAZ-CAM	3.80	1.31	1.23
3	A	202	Z89	CAW-SAX	4.09	1.76	1.66
3	B	203	Z89	OAZ-CAM	4.17	1.31	1.23
3	B	203	Z89	CAW-SAX	4.60	1.77	1.66

Continued on next page...

Continued from previous page...

Mol	Chain	Res	Type	Atoms	Z	Observed(Å)	Ideal(Å)
3	A	201	Z89	CAW-SAX	4.98	1.78	1.66

All (65) bond angle outliers are listed below:

Mol	Chain	Res	Type	Atoms	Z	Observed(°)	Ideal(°)
3	A	202	Z89	CAW-SAY-CAL	-12.14	83.00	92.13
3	A	201	Z89	CAW-SAY-CAL	-11.38	83.56	92.13
3	A	202	Z89	CAA-NAJ-CAI	-10.63	104.83	111.35
3	A	201	Z89	CAA-NAJ-CAI	-9.47	105.55	111.35
2	A	200	Z88	OAD-SAN-OAC	-7.76	109.24	119.54
3	A	201	Z89	SAX-CAW-N	-7.63	116.72	129.51
3	B	203	Z89	CAA-NAJ-CAI	-7.31	106.87	111.35
2	B	200	Z88	OAD-SAN-OAC	-7.07	110.17	119.54
3	B	203	Z89	SAX-CAW-N	-6.67	118.32	129.51
3	A	202	Z89	CAW-N-CAM	-6.36	103.96	116.82
3	A	202	Z89	CAG-CAA-CAB	-5.80	115.91	122.19
3	A	202	Z89	SAX-CAW-N	-5.66	120.03	129.51
3	A	201	Z89	CAW-N-CAM	-5.34	106.03	116.82
3	B	203	Z89	CAW-SAY-CAL	-5.28	88.16	92.13
2	B	200	Z88	OAB-CAK-NAJ	-5.14	117.47	121.14
3	A	201	Z89	CAG-CAA-CAB	-4.99	116.79	122.19
3	A	202	Z89	OAK-CAI-NAJ	-4.25	119.82	126.38
3	A	202	Z89	OAZ-CAM-N	-3.30	118.48	125.54
3	A	201	Z89	OAZ-CAM-N	-3.12	118.85	125.54
3	A	202	Z89	SAY-CAW-SAX	-3.00	117.30	123.28
3	A	201	Z89	CAF-CAD-CAC	-2.90	117.03	121.44
3	B	203	Z89	OAK-CAI-NAJ	-2.90	121.90	126.38
3	B	203	Z89	CAG-CAA-CAB	-2.76	119.21	122.19
2	A	200	Z88	OAC-SAN-CAM	-2.62	104.64	107.96
2	B	200	Z88	OAC-SAN-NAJ	-2.61	99.23	106.79
3	A	201	Z89	OAK-CAI-NAJ	-2.58	122.40	126.38
3	B	203	Z89	CB-CA-N	-2.48	109.54	112.46
2	A	200	Z88	CAI-CAM-SAN	-2.37	117.05	119.78
2	B	200	Z88	CAI-CAM-SAN	-2.36	117.06	119.78
3	B	203	Z89	CAW-N-CAM	-2.35	112.08	116.82
3	B	203	Z89	OAZ-CAM-N	-2.16	120.91	125.54
2	B	200	Z88	BRAE-CAL-CAG	-2.11	115.94	119.28
3	A	202	Z89	CAF-CAD-CAC	-2.07	118.30	121.44
3	A	201	Z89	CG-CB-CA	-2.05	110.95	114.33
2	A	200	Z88	CAH-CAM-SAN	2.14	122.26	119.78
2	B	200	Z88	BRAE-CAL-CAF	2.15	122.68	119.28
3	A	202	Z89	CA-N-CAM	2.20	129.97	123.94

Continued on next page...

Continued from previous page...

Mol	Chain	Res	Type	Atoms	Z	Observed(°)	Ideal(°)
3	A	201	Z89	CAC-CAB-CAA	2.24	121.57	119.43
3	A	201	Z89	CAB-CAA-NAJ	2.38	111.11	108.28
3	B	203	Z89	CAL-CAM-N	2.41	112.03	106.59
3	A	201	Z89	CAB-CAH-CAI	2.42	106.88	105.37
3	A	202	Z89	CAB-CAA-NAJ	2.67	111.46	108.28
2	A	200	Z88	OAD-SAN-NAJ	2.71	114.63	106.79
3	A	201	Z89	BRAE-CAD-CAC	2.80	123.35	119.28
2	A	200	Z88	BRAE-CAL-CAF	2.88	123.83	119.28
2	B	200	Z88	OAD-SAN-NAJ	2.99	115.46	106.79
3	A	202	Z89	CB-CA-N	3.18	116.20	112.46
2	A	200	Z88	CAA-CAK-NAJ	3.40	117.81	115.04
3	A	202	Z89	CAB-CAH-CAI	3.46	107.53	105.37
3	B	203	Z89	CA-N-CAM	3.59	133.78	123.94
3	A	201	Z89	CB-CA-N	4.08	117.27	112.46
3	A	202	Z89	CAC-CAB-CAA	4.22	123.48	119.43
3	A	201	Z89	CAL-CAM-N	4.25	116.18	106.59
3	A	202	Z89	CAL-CAM-N	4.34	116.39	106.59
3	B	203	Z89	SAY-CAW-N	5.10	116.77	109.21
2	B	200	Z88	CAA-CAK-NAJ	5.69	119.69	115.04
2	B	200	Z88	CAK-NAJ-SAN	5.90	128.20	124.05
3	A	201	Z89	CAH-CAI-NAJ	6.71	111.29	106.83
3	B	203	Z89	CAH-CAI-NAJ	6.75	111.31	106.83
3	A	202	Z89	CAH-CAI-NAJ	6.89	111.41	106.83
2	A	200	Z88	CAM-SAN-NAJ	7.11	115.16	105.93
2	B	200	Z88	CAM-SAN-NAJ	7.56	115.74	105.93
3	A	201	Z89	SAY-CAW-N	8.04	121.13	109.21
3	A	202	Z89	SAY-CAW-N	9.07	122.66	109.21
2	A	200	Z88	CAK-NAJ-SAN	12.31	132.71	124.05

There are no chirality outliers.

All (4) torsion outliers are listed below:

Mol	Chain	Res	Type	Atoms
2	A	200	Z88	OAB-CAK-NAJ-SAN
2	B	200	Z88	OAB-CAK-NAJ-SAN
2	B	200	Z88	CAA-CAK-NAJ-SAN
2	A	200	Z88	CAA-CAK-NAJ-SAN

There are no ring outliers.

4 monomers are involved in 22 short contacts:

Mol	Chain	Res	Type	Clashes	Symm-Clashes
3	A	201	Z89	7	0
3	A	202	Z89	6	0
2	B	200	Z88	4	0
3	B	203	Z89	5	0

5.7 Other polymers [i](#)

There are no such residues in this entry.

5.8 Polymer linkage issues [i](#)

There are no chain breaks in this entry.

6 Fit of model and data [i](#)

6.1 Protein, DNA and RNA chains [i](#)

In the following table, the column labelled ‘#RSRZ> 2’ contains the number (and percentage) of RSRZ outliers, followed by percent RSRZ outliers for the chain as percentile scores relative to all X-ray entries and entries of similar resolution. The OWAB column contains the minimum, median, 95th percentile and maximum values of the occupancy-weighted average B-factor per residue. The column labelled ‘Q< 0.9’ lists the number of (and percentage) of residues with an average occupancy less than 0.9.

Mol	Chain	Analysed	<RSRZ>	#RSRZ>2	OWAB(Å ²)	Q<0.9
1	A	122/127 (96%)	-0.13	1 (0%) 87 90	25, 38, 59, 76	0
1	B	122/127 (96%)	-0.07	1 (0%) 87 90	26, 37, 60, 76	0
All	All	244/254 (96%)	-0.10	2 (0%) 87 90	25, 38, 60, 76	0

All (2) RSRZ outliers are listed below:

Mol	Chain	Res	Type	RSRZ
1	A	99	GLU	2.9
1	B	81	GLU	2.5

6.2 Non-standard residues in protein, DNA, RNA chains [i](#)

There are no non-standard protein/DNA/RNA residues in this entry.

6.3 Carbohydrates [i](#)

There are no carbohydrates in this entry.

6.4 Ligands [i](#)

In the following table, the Atoms column lists the number of modelled atoms in the group and the number defined in the chemical component dictionary. LLDF column lists the quality of electron density of the group with respect to its neighbouring residues in protein, DNA or RNA chains. The B-factors column lists the minimum, median, 95th percentile and maximum values of B factors of atoms in the group. The column labelled ‘Q< 0.9’ lists the number of atoms with occupancy less than 0.9.

Mol	Type	Chain	Res	Atoms	RSCC	RSR	LLDF	B-factors(Å ²)	Q<0.9
3	Z89	A	202	26/26	0.71	0.24	2.76	88,89,90,90	26

Continued on next page...

Continued from previous page...

Mol	Type	Chain	Res	Atoms	RSCC	RSR	LLDF	B-factors(\AA^2)	Q<0.9
3	Z89	A	201	26/26	0.62	0.24	2.55	87,91,92,92	26
3	Z89	B	203	26/26	0.83	0.16	1.02	57,68,68,70	0
2	Z88	A	200	14/14	0.91	0.12	-0.45	67,78,81,86	0
2	Z88	B	200	14/14	0.95	0.12	-0.56	70,76,78,83	0

6.5 Other polymers [i](#)

There are no such residues in this entry.