



wwPDB X-ray Structure Validation Summary Report ⓘ

Feb 1, 2016 – 06:24 PM GMT

PDB ID : 4LHW
Title : Crystal structure of Rab8 in its active GppNHp-bound form
Authors : Guo, Z.; Hou, X.M.; Goody, R.S.; Itzen, A.
Deposited on : 2013-07-01
Resolution : 1.55 Å(reported)

This is a wwPDB X-ray Structure Validation Summary Report for a publicly released PDB entry.
We welcome your comments at validation@mail.wwpdb.org
A user guide is available at
<http://wwpdb.org/validation/2016/XrayValidationReportHelp>
with specific help available everywhere you see the ⓘ symbol.

The following versions of software and data (see [references ⓘ](#)) were used in the production of this report:

MolProbity : 4.02b-467
Mogul : 1.7 (RC4), CSD as536be (2015)
Xtriage (Phenix) : 1.9-1692
EDS : rb-20026688
Percentile statistics : 20151230.v01 (using entries in the PDB archive December 30th 2015)
Refmac : 5.8.0135
CCP4 : 6.5.0
Ideal geometry (proteins) : Engh & Huber (2001)
Ideal geometry (DNA, RNA) : Parkinson et al. (1996)
Validation Pipeline (wwPDB-VP) : trunk26865

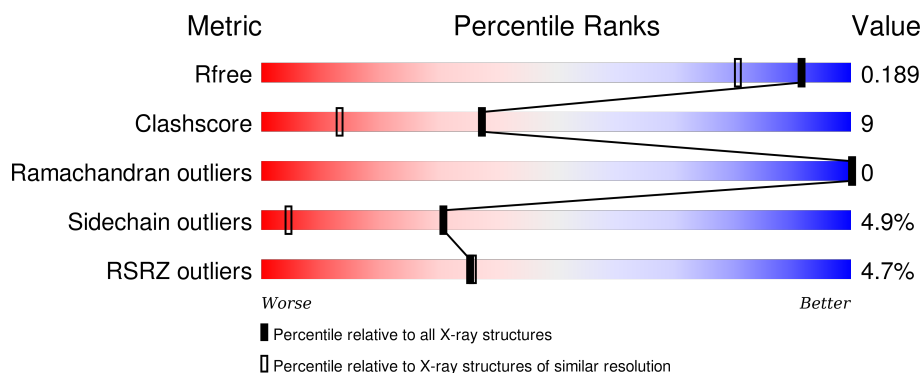
1 Overall quality at a glance

The following experimental techniques were used to determine the structure:

X-RAY DIFFRACTION

The reported resolution of this entry is 1.55 Å.

Percentile scores (ranging between 0-100) for global validation metrics of the entry are shown in the following graphic. The table shows the number of entries on which the scores are based.



Metric	Whole archive (#Entries)	Similar resolution (#Entries, resolution range(Å))
R_{free}	91344	1665 (1.58-1.54)
Clashscore	102246	1014 (1.56-1.56)
Ramachandran outliers	100387	1704 (1.58-1.54)
Sidechain outliers	100360	1702 (1.58-1.54)
RSRZ outliers	91569	1668 (1.58-1.54)

The table below summarises the geometric issues observed across the polymeric chains and their fit to the electron density. The red, orange, yellow and green segments on the lower bar indicate the fraction of residues that contain outliers for ≥ 3 , 2, 1 and 0 types of geometric quality criteria. A grey segment represents the fraction of residues that are not modelled. The numeric value for each fraction is indicated below the corresponding segment, with a dot representing fractions $\leq 5\%$. The upper red bar (where present) indicates the fraction of residues that have poor fit to the electron density. The numeric value is given above the bar.

Mol	Chain	Length	Quality of chain
1	A	174	<div> <div>3%</div> <div>89% 9%</div> </div>
1	B	174	<div> <div>3%</div> <div>84% 12%</div> </div>
1	C	174	<div> <div>3%</div> <div>85% 10%</div> </div>
1	D	174	<div> <div>5%</div> <div>83% 14%</div> </div>
1	E	174	<div> <div>8%</div> <div>76% 18%</div> </div>

2 Entry composition

There are 5 unique types of molecules in this entry. The entry contains 8195 atoms, of which 0 are hydrogens and 0 are deuteriums.

In the tables below, the ZeroOcc column contains the number of atoms modelled with zero occupancy, the AltConf column contains the number of residues with at least one atom in alternate conformation and the Trace column contains the number of residues modelled with at most 2 atoms.

- Molecule 1 is a protein called Ras-related protein Rab-8A.

Mol	Chain	Residues	Atoms					ZeroOcc	AltConf	Trace
1	A	171	Total	C	N	O	S	0	2	0
			1390	885	240	258	7			
1	B	173	Total	C	N	O	S	0	3	0
			1405	895	241	262	7			
1	C	171	Total	C	N	O	S	0	3	0
			1392	885	237	263	7			
1	D	173	Total	C	N	O	S	6	3	0
			1407	895	241	264	7			
1	E	171	Total	C	N	O	S	0	1	0
			1379	879	237	256	7			

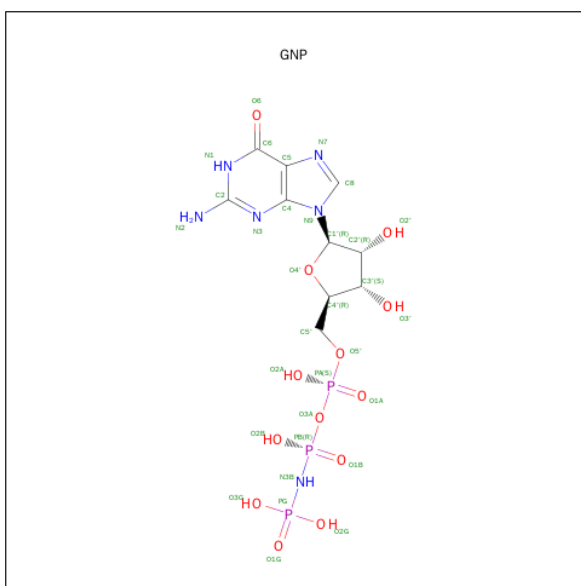
There are 15 discrepancies between the modelled and reference sequences:

Chain	Residue	Modelled	Actual	Comment	Reference
A	3	GLY	-	EXPRESSION TAG	UNP P61006
A	4	SER	-	EXPRESSION TAG	UNP P61006
A	5	HIS	-	EXPRESSION TAG	UNP P61006
B	3	GLY	-	EXPRESSION TAG	UNP P61006
B	4	SER	-	EXPRESSION TAG	UNP P61006
B	5	HIS	-	EXPRESSION TAG	UNP P61006
C	3	GLY	-	EXPRESSION TAG	UNP P61006
C	4	SER	-	EXPRESSION TAG	UNP P61006
C	5	HIS	-	EXPRESSION TAG	UNP P61006
D	3	GLY	-	EXPRESSION TAG	UNP P61006
D	4	SER	-	EXPRESSION TAG	UNP P61006
D	5	HIS	-	EXPRESSION TAG	UNP P61006
E	3	GLY	-	EXPRESSION TAG	UNP P61006
E	4	SER	-	EXPRESSION TAG	UNP P61006
E	5	HIS	-	EXPRESSION TAG	UNP P61006

- Molecule 2 is MAGNESIUM ION (three-letter code: MG) (formula: Mg).

Mol	Chain	Residues	Atoms	ZeroOcc	AltConf
2	B	1	Total Mg 1 1	0	0
2	A	1	Total Mg 1 1	0	0
2	D	1	Total Mg 1 1	0	0
2	C	1	Total Mg 1 1	0	0
2	E	1	Total Mg 1 1	0	0

- Molecule 3 is PHOSPHOAMINOPHOSPHONIC ACID-GUANYLATE ESTER (three-letter code: GNP) (formula: $C_{10}H_{17}N_6O_{13}P_3$).



Mol	Chain	Residues	Atoms	ZeroOcc	AltConf
3	A	1	Total C N O P 32 10 6 13 3	0	0
3	B	1	Total C N O P 32 10 6 13 3	0	0
3	C	1	Total C N O P 32 10 6 13 3	0	0
3	D	1	Total C N O P 32 10 6 13 3	0	0
3	E	1	Total C N O P 32 10 6 13 3	0	0

- Molecule 4 is (4S)-2-METHYL-2,4-PENTANEDIOL (three-letter code: MPD) (formula: $C_6H_{14}O_2$).



Mol	Chain	Residues	Atoms			ZeroOcc	AltConf
4	A	1	Total	C	O	0	0
			8	6	2		

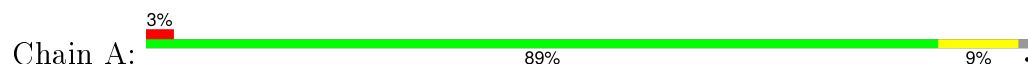
- Molecule 5 is water.

Mol	Chain	Residues	Atoms		ZeroOcc	AltConf
5	A	244	Total	O	0	0
			244	244		
5	B	192	Total	O	0	0
			192	192		
5	C	231	Total	O	0	0
			231	231		
5	D	227	Total	O	0	0
			227	227		
5	E	155	Total	O	0	0
			155	155		

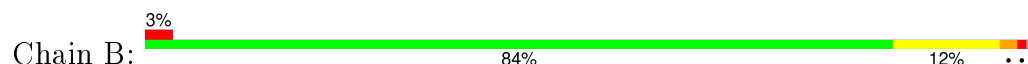
3 Residue-property plots [i](#)

These plots are drawn for all protein, RNA and DNA chains in the entry. The first graphic for a chain summarises the proportions of errors displayed in the second graphic. The second graphic shows the sequence view annotated by issues in geometry and electron density. Residues are color-coded according to the number of geometric quality criteria for which they contain at least one outlier: green = 0, yellow = 1, orange = 2 and red = 3 or more. A red dot above a residue indicates a poor fit to the electron density ($RSRZ > 2$). Stretches of 2 or more consecutive residues without any outlier are shown as a green connector. Residues present in the sample, but not in the model, are shown in grey.

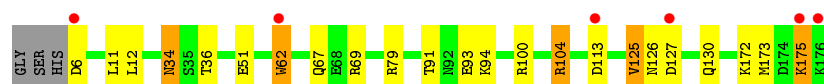
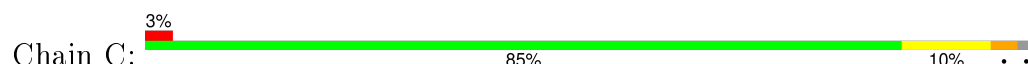
- Molecule 1: Ras-related protein Rab-8A



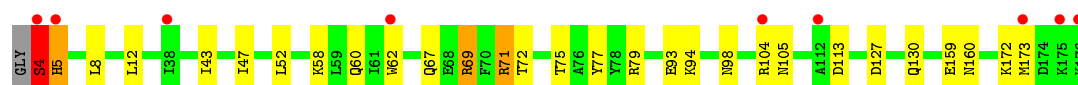
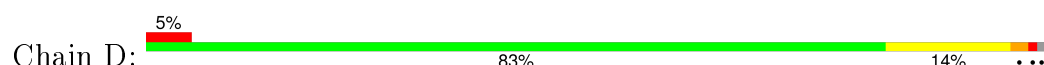
- Molecule 1: Ras-related protein Rab-8A



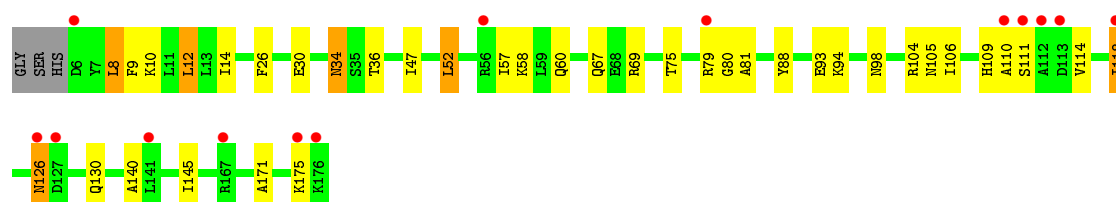
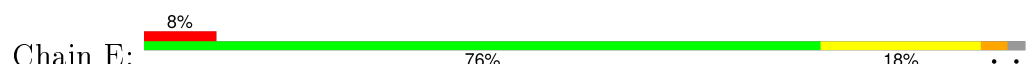
- Molecule 1: Ras-related protein Rab-8A



- Molecule 1: Ras-related protein Rab-8A



- Molecule 1: Ras-related protein Rab-8A



4 Data and refinement statistics

Property	Value	Source
Space group	P 21 21 21	Depositor
Cell constants a, b, c, α , β , γ	90.38 Å 96.68 Å 105.09 Å 90.00° 90.00° 90.00°	Depositor
Resolution (Å)	19.89 – 1.55 19.86 – 1.55	Depositor EDS
% Data completeness (in resolution range)	99.2 (19.89-1.55) 99.2 (19.86-1.55)	Depositor EDS
R_{merge}	(Not available)	Depositor
R_{sym}	(Not available)	Depositor
$\langle I/\sigma(I) \rangle$ ¹	5.25 (at 1.55 Å)	Xtriage
Refinement program	REFMAC 5.2.0019	Depositor
R, R_{free}	0.144 , 0.183 0.156 , 0.189	Depositor DCC
R_{free} test set	6745 reflections (5.36%)	DCC
Wilson B-factor (Å ²)	14.8	Xtriage
Anisotropy	0.229	Xtriage
Bulk solvent k_{sol} (e/Å ³), B_{sol} (Å ²)	0.35 , 58.3	EDS
Estimated twinning fraction	No twinning to report.	Xtriage
L-test for twinning ²	$\langle L \rangle = 0.48$, $\langle L^2 \rangle = 0.32$	Xtriage
Outliers	0 of 132543 reflections	Xtriage
F_o, F_c correlation	0.97	EDS
Total number of atoms	8195	wwPDB-VP
Average B, all atoms (Å ²)	23.0	wwPDB-VP

Xtriage's analysis on translational NCS is as follows: *The largest off-origin peak in the Patterson function is 5.06% of the height of the origin peak. No significant pseudotranslation is detected.*

¹Intensities estimated from amplitudes.

²Theoretical values of $\langle |L| \rangle$, $\langle L^2 \rangle$ for acentric reflections are 0.5, 0.375 respectively for untwinned datasets, and 0.333, 0.2 for perfectly twinned datasets.

5 Model quality [i](#)

5.1 Standard geometry [i](#)

Bond lengths and bond angles in the following residue types are not validated in this section: MG, MPD, GNP

The Z score for a bond length (or angle) is the number of standard deviations the observed value is removed from the expected value. A bond length (or angle) with $|Z| > 5$ is considered an outlier worth inspection. RMSZ is the root-mean-square of all Z scores of the bond lengths (or angles).

Mol	Chain	Bond lengths		Bond angles	
		RMSZ	$\# Z > 5$	RMSZ	$\# Z > 5$
1	A	0.56	0/1416	0.72	1/1897 (0.1%)
1	B	0.55	0/1435	0.77	3/1923 (0.2%)
1	C	0.66	1/1421 (0.1%)	0.72	0/1904
1	D	0.65	2/1437 (0.1%)	0.72	1/1926 (0.1%)
1	E	0.47	0/1402	0.69	1/1879 (0.1%)
All	All	0.58	3/7111 (0.0%)	0.73	6/9529 (0.1%)

Chiral center outliers are detected by calculating the chiral volume of a chiral center and verifying if the center is modelled as a planar moiety or with the opposite hand. A planarity outlier is detected by checking planarity of atoms in a peptide group, atoms in a mainchain group or atoms of a sidechain that are expected to be planar.

Mol	Chain	#Chirality outliers	#Planarity outliers
1	D	0	1

All (3) bond length outliers are listed below:

Mol	Chain	Res	Type	Atoms	Z	Observed(Å)	Ideal(Å)
1	C	62	TRP	CB-CG	-13.66	1.25	1.50
1	D	4	SER	CB-OG	-10.21	1.28	1.42
1	D	4	SER	N-CA	-6.46	1.33	1.46

The worst 5 of 6 bond angle outliers are listed below:

Mol	Chain	Res	Type	Atoms	Z	Observed(°)	Ideal(°)
1	B	44	ASP	CB-CG-OD1	7.15	124.74	118.30
1	D	12	LEU	CA-CB-CG	6.25	129.68	115.30
1	B	73[A]	ILE	CB-CA-C	-6.20	99.20	111.60
1	B	73[B]	ILE	CB-CA-C	-6.20	99.20	111.60
1	A	148	MET	CG-SD-CE	-5.74	91.02	100.20

There are no chirality outliers.

All (1) planarity outliers are listed below:

Mol	Chain	Res	Type	Group
1	D	4	SER	Peptide

5.2 Too-close contacts ⓘ

In the following table, the Non-H and H(model) columns list the number of non-hydrogen atoms and hydrogen atoms in the chain respectively. The H(added) column lists the number of hydrogen atoms added and optimized by MolProbity. The Clashes column lists the number of clashes within the asymmetric unit, whereas Symm-Clashes lists symmetry related clashes.

Mol	Chain	Non-H	H(model)	H(added)	Clashes	Symm-Clashes
1	A	1390	0	1409	18	0
1	B	1405	0	1425	27	0
1	C	1392	0	1402	21	0
1	D	1407	0	1419	28	0
1	E	1379	0	1394	37	0
2	A	1	0	0	0	0
2	B	1	0	0	0	0
2	C	1	0	0	0	0
2	D	1	0	0	0	0
2	E	1	0	0	0	0
3	A	32	0	13	0	0
3	B	32	0	13	0	0
3	C	32	0	13	0	0
3	D	32	0	13	0	0
3	E	32	0	13	0	0
4	A	8	0	14	4	0
5	A	244	0	0	8	0
5	B	192	0	0	8	0
5	C	231	0	0	6	0
5	D	227	0	0	11	0
5	E	155	0	0	4	0
All	All	8195	0	7128	132	0

The all-atom clashscore is defined as the number of clashes found per 1000 atoms (including hydrogen atoms). The all-atom clashscore for this structure is 9.

The worst 5 of 132 close contacts within the same asymmetric unit are listed below, sorted by their clash magnitude.

Atom-1	Atom-2	Interatomic distance (Å)	Clash overlap (Å)
1:A:65:ALA:HB1	5:A:551:HOH:O	1.20	1.33
1:D:47:ILE:CG2	5:D:354:HOH:O	1.97	1.12
1:E:67:GLN:NE2	5:E:367:HOH:O	1.82	1.11
1:A:108:GLU:HG3	5:A:516:HOH:O	1.59	1.01
1:A:103[A]:ILE:HD11	5:A:588:HOH:O	1.66	0.94

There are no symmetry-related clashes.

5.3 Torsion angles [i](#)

5.3.1 Protein backbone [i](#)

In the following table, the Percentiles column shows the percent Ramachandran outliers of the chain as a percentile score with respect to all X-ray entries followed by that with respect to entries of similar resolution.

The Analysed column shows the number of residues for which the backbone conformation was analysed, and the total number of residues.

Mol	Chain	Analysed	Favoured	Allowed	Outliers	Percentiles	
1	A	171/174 (98%)	167 (98%)	4 (2%)	0	100	100
1	B	174/174 (100%)	171 (98%)	3 (2%)	0	100	100
1	C	172/174 (99%)	168 (98%)	4 (2%)	0	100	100
1	D	174/174 (100%)	170 (98%)	4 (2%)	0	100	100
1	E	170/174 (98%)	162 (95%)	8 (5%)	0	100	100
All	All	861/870 (99%)	838 (97%)	23 (3%)	0	100	100

There are no Ramachandran outliers to report.

5.3.2 Protein sidechains [i](#)

In the following table, the Percentiles column shows the percent sidechain outliers of the chain as a percentile score with respect to all X-ray entries followed by that with respect to entries of similar resolution.

The Analysed column shows the number of residues for which the sidechain conformation was analysed, and the total number of residues.

Mol	Chain	Analysed	Rotameric	Outliers	Percentiles	
1	A	149/150 (99%)	146 (98%)	3 (2%)	63	31

Continued on next page...

Continued from previous page...

Mol	Chain	Analysed	Rotameric	Outliers	Percentiles
1	B	152/150 (101%)	140 (92%)	12 (8%)	15 1
1	C	150/150 (100%)	140 (93%)	10 (7%)	20 2
1	D	152/150 (101%)	147 (97%)	5 (3%)	45 13
1	E	147/150 (98%)	137 (93%)	10 (7%)	20 2
All	All	750/750 (100%)	710 (95%)	40 (5%)	31 4

5 of 40 residues with a non-rotameric sidechain are listed below:

Mol	Chain	Res	Type
1	C	51[B]	GLU
1	C	127	ASP
1	E	104	ARG
1	C	104	ARG
1	C	173	MET

Some sidechains can be flipped to improve hydrogen bonding and reduce clashes. 5 of 16 such sidechains are listed below:

Mol	Chain	Res	Type
1	D	60	GLN
1	D	67	GLN
1	E	34	ASN
1	C	130	GLN
1	E	67	GLN

5.3.3 RNA ⓘ

There are no RNA molecules in this entry.

5.4 Non-standard residues in protein, DNA, RNA chains ⓘ

There are no non-standard protein/DNA/RNA residues in this entry.

5.5 Carbohydrates ⓘ

There are no carbohydrates in this entry.

5.6 Ligand geometry

Of 11 ligands modelled in this entry, 5 are monoatomic - leaving 6 for Mogul analysis.

In the following table, the Counts columns list the number of bonds (or angles) for which Mogul statistics could be retrieved, the number of bonds (or angles) that are observed in the model and the number of bonds (or angles) that are defined in the chemical component dictionary. The Link column lists molecule types, if any, to which the group is linked. The Z score for a bond length (or angle) is the number of standard deviations the observed value is removed from the expected value. A bond length (or angle) with $|Z| > 2$ is considered an outlier worth inspection. RMSZ is the root-mean-square of all Z scores of the bond lengths (or angles).

Mol	Type	Chain	Res	Link	Bond lengths			Bond angles		
					Counts	RMSZ	# $ Z > 2$	Counts	RMSZ	# $ Z > 2$
3	GNP	A	302	2	28,34,34	1.52	5 (17%)	33,54,54	2.03	6 (18%)
4	MPD	A	303	-	6,7,7	0.42	0	7,10,10	0.58	0
3	GNP	B	202	2	28,34,34	1.35	3 (10%)	33,54,54	2.21	6 (18%)
3	GNP	C	202	2	28,34,34	1.67	6 (21%)	33,54,54	2.43	8 (24%)
3	GNP	D	202	2	28,34,34	1.46	4 (14%)	33,54,54	2.25	9 (27%)
3	GNP	E	202	2	28,34,34	1.50	5 (17%)	33,54,54	2.00	5 (15%)

In the following table, the Chirals column lists the number of chiral outliers, the number of chiral centers analysed, the number of these observed in the model and the number defined in the chemical component dictionary. Similar counts are reported in the Torsion and Rings columns. '-' means no outliers of that kind were identified.

Mol	Type	Chain	Res	Link	Chirals	Torsions	Rings
3	GNP	A	302	2	-	1/12/38/38	0/3/3/3
4	MPD	A	303	-	-	0/5/5/5	0/0/0/0
3	GNP	B	202	2	-	1/12/38/38	0/3/3/3
3	GNP	C	202	2	-	1/12/38/38	0/3/3/3
3	GNP	D	202	2	-	1/12/38/38	0/3/3/3
3	GNP	E	202	2	-	1/12/38/38	0/3/3/3

The worst 5 of 23 bond length outliers are listed below:

Mol	Chain	Res	Type	Atoms	Z	Observed(Å)	Ideal(Å)
3	E	202	GNP	PB-O2B	-3.55	1.46	1.56
3	B	202	GNP	PB-O3A	-3.28	1.55	1.59
3	C	202	GNP	PB-O2B	-3.23	1.47	1.56
3	D	202	GNP	PG-O2G	-3.15	1.47	1.56
3	D	202	GNP	PB-O2B	-2.86	1.48	1.56

The worst 5 of 34 bond angle outliers are listed below:

Mol	Chain	Res	Type	Atoms	Z	Observed($^{\circ}$)	Ideal($^{\circ}$)
3	C	202	GNP	C5-C6-N1	-8.89	111.44	123.59
3	D	202	GNP	C5-C6-N1	-8.25	112.30	123.59
3	B	202	GNP	C5-C6-N1	-8.21	112.37	123.59
3	E	202	GNP	C5-C6-N1	-7.30	113.61	123.59
3	A	302	GNP	C5-C6-N1	-6.99	114.03	123.59

There are no chirality outliers.

All (5) torsion outliers are listed below:

Mol	Chain	Res	Type	Atoms
3	B	202	GNP	O1B-PB-N3B-PG
3	C	202	GNP	O1B-PB-N3B-PG
3	A	302	GNP	O1B-PB-N3B-PG
3	D	202	GNP	O1B-PB-N3B-PG
3	E	202	GNP	O1B-PB-N3B-PG

There are no ring outliers.

1 monomer is involved in 4 short contacts:

Mol	Chain	Res	Type	Clashes	Symm-Clashes
4	A	303	MPD	4	0

5.7 Other polymers [i](#)

There are no such residues in this entry.

5.8 Polymer linkage issues [i](#)

There are no chain breaks in this entry.

6 Fit of model and data [i](#)

6.1 Protein, DNA and RNA chains [i](#)

In the following table, the column labelled ‘#RSRZ> 2’ contains the number (and percentage) of RSRZ outliers, followed by percent RSRZ outliers for the chain as percentile scores relative to all X-ray entries and entries of similar resolution. The OWAB column contains the minimum, median, 95th percentile and maximum values of the occupancy-weighted average B-factor per residue. The column labelled ‘Q< 0.9’ lists the number of (and percentage) of residues with an average occupancy less than 0.9.

Mol	Chain	Analysed	<RSRZ>	#RSRZ>2	OWAB(Å ²)	Q<0.9
1	A	171/174 (98%)	-0.17	5 (2%) 55 59	9, 16, 32, 50	0
1	B	173/174 (99%)	-0.06	6 (3%) 48 51	10, 19, 34, 50	0
1	C	171/174 (98%)	-0.01	6 (3%) 48 51	9, 19, 33, 59	0
1	D	173/174 (99%)	0.12	9 (5%) 31 31	11, 20, 36, 60	0
1	E	171/174 (98%)	0.39	14 (8%) 14 14	10, 25, 50, 80	0
All	All	859/870 (98%)	0.05	40 (4%) 35 36	9, 19, 40, 80	0

The worst 5 of 40 RSRZ outliers are listed below:

Mol	Chain	Res	Type	RSRZ
1	D	176	LYS	8.3
1	C	176	LYS	5.2
1	A	176	LYS	4.4
1	E	112	ALA	4.3
1	E	79	ARG	4.3

6.2 Non-standard residues in protein, DNA, RNA chains [i](#)

There are no non-standard protein/DNA/RNA residues in this entry.

6.3 Carbohydrates [i](#)

There are no carbohydrates in this entry.

6.4 Ligands [i](#)

In the following table, the Atoms column lists the number of modelled atoms in the group and the number defined in the chemical component dictionary. LLDF column lists the quality of electron

density of the group with respect to its neighbouring residues in protein, DNA or RNA chains. The B-factors column lists the minimum, median, 95th percentile and maximum values of B factors of atoms in the group. The column labelled 'Q< 0.9' lists the number of atoms with occupancy less than 0.9.

Mol	Type	Chain	Res	Atoms	RSCC	RSR	LLDF	B-factors(Å ²)	Q<0.9
2	MG	B	201	1/1	1.00	0.06	0.13	11,11,11,11	0
4	MPD	A	303	8/8	0.91	0.08	-0.20	17,19,22,24	0
3	GNP	A	302	32/32	0.99	0.05	-0.63	8,9,11,12	0
3	GNP	B	202	32/32	0.99	0.05	-0.64	10,13,15,17	0
3	GNP	E	202	32/32	0.99	0.05	-0.68	9,12,14,15	0
3	GNP	C	202	32/32	0.99	0.05	-0.87	9,11,13,14	0
3	GNP	D	202	32/32	0.99	0.05	-0.96	11,13,15,16	0
2	MG	D	201	1/1	1.00	0.05	-0.98	12,12,12,12	0
2	MG	E	201	1/1	1.00	0.04	-0.99	12,12,12,12	0
2	MG	C	201	1/1	0.99	0.04	-1.75	11,11,11,11	0
2	MG	A	301	1/1	1.00	0.04	-1.79	8,8,8,8	0

6.5 Other polymers [i](#)

There are no such residues in this entry.