



Full wwPDB X-ray Structure Validation Report ⓘ

Feb 1, 2016 – 06:27 PM GMT

PDB ID : 4LOJ
Title : Crystal structure of mSting in complex with c[G(2',5')pA(3',5')p]
Authors : Gao, P.; Patel, D.J.
Deposited on : 2013-07-12
Resolution : 1.77 Å(reported)

This is a Full wwPDB X-ray Structure Validation Report for a publicly released PDB entry.
We welcome your comments at validation@mail.wwpdb.org
A user guide is available at
<http://wwpdb.org/validation/2016/XrayValidationReportHelp>
with specific help available everywhere you see the ⓘ symbol.

The following versions of software and data (see [references ⓘ](#)) were used in the production of this report:

MolProbity : 4.02b-467
Mogul : 1.7 (RC4), CSD as536be (2015)
Xtriage (Phenix) : 1.9-1692
EDS : rb-20026688
Percentile statistics : 20151230.v01 (using entries in the PDB archive December 30th 2015)
Refmac : 5.8.0135
CCP4 : 6.5.0
Ideal geometry (proteins) : Engh & Huber (2001)
Ideal geometry (DNA, RNA) : Parkinson et al. (1996)
Validation Pipeline (wwPDB-VP) : trunk26865

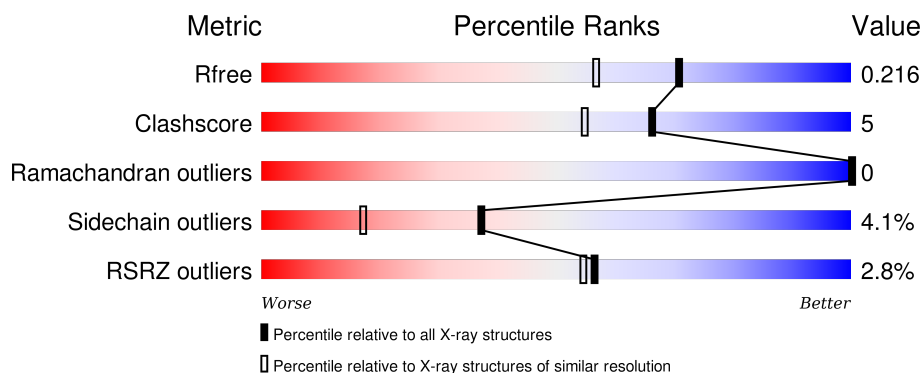
1 Overall quality at a glance

The following experimental techniques were used to determine the structure:

X-RAY DIFFRACTION

The reported resolution of this entry is 1.77 Å.

Percentile scores (ranging between 0-100) for global validation metrics of the entry are shown in the following graphic. The table shows the number of entries on which the scores are based.



Metric	Whole archive (#Entries)	Similar resolution (#Entries, resolution range(Å))
R_{free}	91344	6655 (1.80-1.76)
Clashscore	102246	7658 (1.80-1.76)
Ramachandran outliers	100387	7570 (1.80-1.76)
Sidechain outliers	100360	7569 (1.80-1.76)
RSRZ outliers	91569	6671 (1.80-1.76)

The table below summarises the geometric issues observed across the polymeric chains and their fit to the electron density. The red, orange, yellow and green segments on the lower bar indicate the fraction of residues that contain outliers for ≥ 3 , 2, 1 and 0 types of geometric quality criteria. A grey segment represents the fraction of residues that are not modelled. The numeric value for each fraction is indicated below the corresponding segment, with a dot representing fractions $\leq 5\%$. The upper red bar (where present) indicates the fraction of residues that have poor fit to the electron density. The numeric value is given above the bar.

Mol	Chain	Length	Quality of chain
1	A	188	<div> <div></div> <div>87%</div> <div>8% . .</div> </div>
1	B	188	<div> <div>5%</div> <div>79%</div> <div>14% . 5%</div> </div>

2 Entry composition [i](#)

There are 3 unique types of molecules in this entry. The entry contains 3198 atoms, of which 0 are hydrogens and 0 are deuteriums.

In the tables below, the ZeroOcc column contains the number of atoms modelled with zero occupancy, the AltConf column contains the number of residues with at least one atom in alternate conformation and the Trace column contains the number of residues modelled with at most 2 atoms.

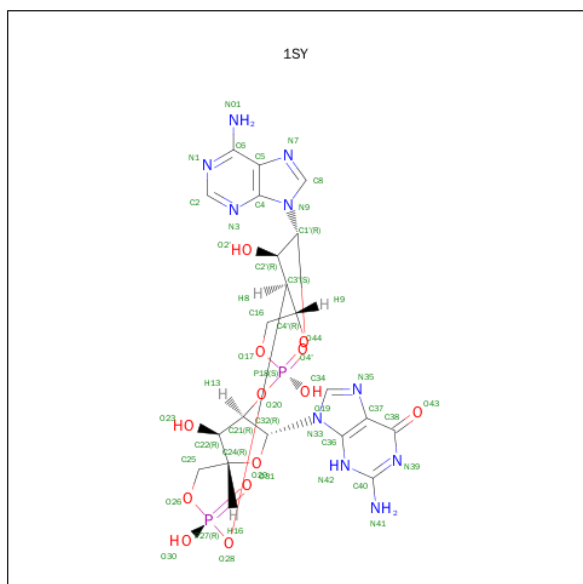
- Molecule 1 is a protein called Stimulator of interferon genes protein.

Mol	Chain	Residues	Atoms					ZeroOcc	AltConf	Trace
1	A	180	Total	C	N	O	S	0	0	0
			1447	911	261	267	8			
1	B	179	Total	C	N	O	S	0	0	0
			1442	908	260	266	8			

There are 2 discrepancies between the modelled and reference sequences:

Chain	Residue	Modelled	Actual	Comment	Reference
A	153	SER	-	EXPRESSION TAG	UNP Q3TBT3
B	153	SER	-	EXPRESSION TAG	UNP Q3TBT3

- Molecule 2 is CGAMP (three-letter code: 1SY) (formula: C₂₀H₂₄N₁₀O₁₃P₂).



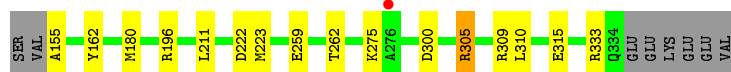
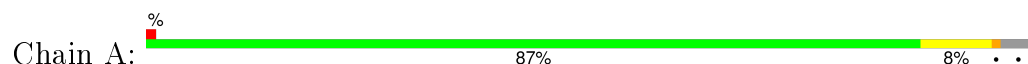
- Molecule 3 is water.

Mol	Chain	Residues	Atoms		ZeroOcc	AltConf
3	A	123	Total 123	O 123	0	0
3	B	96	Total 96	O 96	0	0

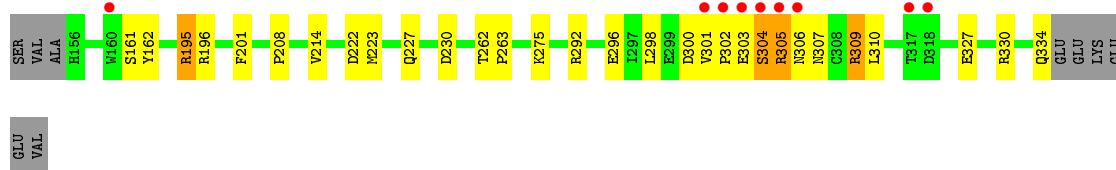
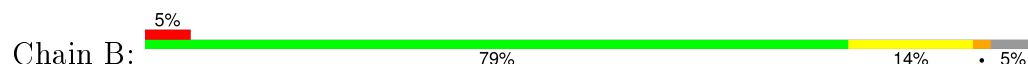
3 Residue-property plots [i](#)

These plots are drawn for all protein, RNA and DNA chains in the entry. The first graphic for a chain summarises the proportions of errors displayed in the second graphic. The second graphic shows the sequence view annotated by issues in geometry and electron density. Residues are color-coded according to the number of geometric quality criteria for which they contain at least one outlier: green = 0, yellow = 1, orange = 2 and red = 3 or more. A red dot above a residue indicates a poor fit to the electron density ($RSRZ > 2$). Stretches of 2 or more consecutive residues without any outlier are shown as a green connector. Residues present in the sample, but not in the model, are shown in grey.

- Molecule 1: Stimulator of interferon genes protein



- Molecule 1: Stimulator of interferon genes protein



4 Data and refinement statistics

Property	Value	Source
Space group	P 21 21 21	Depositor
Cell constants a, b, c, α , β , γ	46.17Å 46.48Å 157.93Å 90.00° 90.00° 90.00°	Depositor
Resolution (Å)	44.63 – 1.77 44.59 – 1.77	Depositor EDS
% Data completeness (in resolution range)	96.5 (44.63-1.77) 96.5 (44.59-1.77)	Depositor EDS
R_{merge}	(Not available)	Depositor
R_{sym}	(Not available)	Depositor
$\langle I/\sigma(I) \rangle$ ¹	4.19 (at 1.77Å)	Xtriage
Refinement program	REFMAC 5.7.0032	Depositor
R, R_{free}	0.191 , 0.212 0.198 , 0.216	Depositor DCC
R_{free} test set	1667 reflections (5.34%)	DCC
Wilson B-factor (Å ²)	20.5	Xtriage
Anisotropy	0.298	Xtriage
Bulk solvent k_{sol} (e/Å ³), B_{sol} (Å ²)	0.35 , 42.7	EDS
Estimated twinning fraction	0.025 for k,h,-l	Xtriage
L-test for twinning ²	$\langle L \rangle = 0.49$, $\langle L^2 \rangle = 0.32$	Xtriage
Outliers	0 of 32975 reflections	Xtriage
F_o, F_c correlation	0.95	EDS
Total number of atoms	3198	wwPDB-VP
Average B, all atoms (Å ²)	25.0	wwPDB-VP

Xtriage's analysis on translational NCS is as follows: *The largest off-origin peak in the Patterson function is 5.94% of the height of the origin peak. No significant pseudotranslation is detected.*

¹Intensities estimated from amplitudes.

²Theoretical values of $\langle |L| \rangle$, $\langle L^2 \rangle$ for acentric reflections are 0.5, 0.375 respectively for untwinned datasets, and 0.333, 0.2 for perfectly twinned datasets.

5 Model quality [i](#)

5.1 Standard geometry [i](#)

Bond lengths and bond angles in the following residue types are not validated in this section: 1SY

The Z score for a bond length (or angle) is the number of standard deviations the observed value is removed from the expected value. A bond length (or angle) with $|Z| > 5$ is considered an outlier worth inspection. RMSZ is the root-mean-square of all Z scores of the bond lengths (or angles).

Mol	Chain	Bond lengths		Bond angles	
		RMSZ	$\# Z > 5$	RMSZ	$\# Z > 5$
1	A	0.83	1/1475 (0.1%)	0.79	1/1996 (0.1%)
1	B	0.77	0/1470	0.78	4/1989 (0.2%)
All	All	0.80	1/2945 (0.0%)	0.78	5/3985 (0.1%)

Chiral center outliers are detected by calculating the chiral volume of a chiral center and verifying if the center is modelled as a planar moiety or with the opposite hand. A planarity outlier is detected by checking planarity of atoms in a peptide group, atoms in a mainchain group or atoms of a sidechain that are expected to be planar.

Mol	Chain	#Chirality outliers	#Planarity outliers
1	B	0	1

All (1) bond length outliers are listed below:

Mol	Chain	Res	Type	Atoms	Z	Observed(Å)	Ideal(Å)
1	A	259	GLU	CD-OE1	-5.05	1.20	1.25

All (5) bond angle outliers are listed below:

Mol	Chain	Res	Type	Atoms	Z	Observed(°)	Ideal(°)
1	B	223	MET	CG-SD-CE	6.44	110.51	100.20
1	B	195	ARG	NE-CZ-NH1	5.73	123.16	120.30
1	B	305	ARG	N-CA-C	-5.34	96.59	111.00
1	B	230	ASP	CB-CG-OD1	5.14	122.92	118.30
1	A	223	MET	CG-SD-CE	5.07	108.31	100.20

There are no chirality outliers.

All (1) planarity outliers are listed below:

Mol	Chain	Res	Type	Group
1	B	304	SER	Peptide

5.2 Too-close contacts ⓘ

In the following table, the Non-H and H(model) columns list the number of non-hydrogen atoms and hydrogen atoms in the chain respectively. The H(added) column lists the number of hydrogen atoms added and optimized by MolProbity. The Clashes column lists the number of clashes within the asymmetric unit, whereas Symm-Clashes lists symmetry related clashes.

Mol	Chain	Non-H	H(model)	H(added)	Clashes	Symm-Clashes
1	A	1447	0	1435	8	0
1	B	1442	0	1430	21	0
2	B	90	0	41	8	0
3	A	123	0	0	2	0
3	B	96	0	0	2	0
All	All	3198	0	2906	29	0

The all-atom clashscore is defined as the number of clashes found per 1000 atoms (including hydrogen atoms). The all-atom clashscore for this structure is 5.

All (29) close contacts within the same asymmetric unit are listed below, sorted by their clash magnitude.

Atom-1	Atom-2	Interatomic distance (Å)	Clash overlap (Å)
1:B:262:THR:OG1	2:B:401[B]:1SY:O2'	1.93	0.85
1:A:262:THR:HG1	2:B:401[A]:1SY:H7	0.84	0.79
1:B:306:ASN:H	1:B:309:ARG:HH22	1.30	0.79
1:A:155:ALA:N	3:A:436:HOH:O	2.24	0.70
1:B:298:LEU:HA	1:B:301:VAL:HG22	1.75	0.69
1:B:262:THR:HG1	2:B:401[B]:1SY:H7	1.39	0.68
1:B:306:ASN:H	1:B:309:ARG:NH2	1.95	0.62
1:B:327:GLU:OE2	1:B:330:ARG:NH1	2.34	0.61
1:B:161:SER:HB3	3:B:596:HOH:O	2.06	0.56
1:B:162:TYR:HA	2:B:401[A]:1SY:H16	1.90	0.53
1:B:292:ARG:HD3	1:B:296:GLU:OE2	2.10	0.51
1:B:300:ASP:C	1:B:302:PRO:HD3	2.31	0.50
1:B:303:GLU:OE2	1:B:303:GLU:N	2.40	0.50
1:B:301:VAL:O	1:B:301:VAL:HG23	2.12	0.49
1:B:208:PRO:HG3	1:B:214:VAL:HG11	1.94	0.48
1:A:300:ASP:OD2	1:B:275:LYS:HD3	2.13	0.48
1:A:262:THR:OG1	2:B:401[A]:1SY:O2'	1.80	0.48
1:A:305:ARG:O	1:A:309:ARG:NH2	2.46	0.47

Continued on next page...

Continued from previous page...

Atom-1	Atom-2	Interatomic distance (Å)	Clash overlap (Å)
1:B:304:SER:HA	1:B:307:ASN:OD1	2.14	0.47
1:A:196:ARG:HD3	1:A:309:ARG:HG2	1.97	0.47
1:B:262:THR:OG1	1:B:263:PRO:HD3	2.15	0.47
1:B:309:ARG:HG2	3:B:571:HOH:O	2.14	0.46
1:B:196:ARG:HG2	1:B:306:ASN:O	2.17	0.45
2:B:401[A]:1SY:O30	2:B:401[A]:1SY:H6	2.17	0.45
1:A:315:GLU:HG2	3:A:463:HOH:O	2.17	0.45
1:A:162:TYR:HA	2:B:401[B]:1SY:H16	1.99	0.44
1:B:263:PRO:HG3	2:B:401[A]:1SY:O23	2.22	0.40
1:B:300:ASP:O	1:B:302:PRO:HD3	2.22	0.40
1:B:201:PHE:CE1	1:B:310:LEU:HD22	2.57	0.40

There are no symmetry-related clashes.

5.3 Torsion angles [i](#)

5.3.1 Protein backbone [i](#)

In the following table, the Percentiles column shows the percent Ramachandran outliers of the chain as a percentile score with respect to all X-ray entries followed by that with respect to entries of similar resolution.

The Analysed column shows the number of residues for which the backbone conformation was analysed, and the total number of residues.

Mol	Chain	Analysed	Favoured	Allowed	Outliers	Percentiles	
1	A	178/188 (95%)	173 (97%)	5 (3%)	0	100	100
1	B	177/188 (94%)	173 (98%)	4 (2%)	0	100	100
All	All	355/376 (94%)	346 (98%)	9 (2%)	0	100	100

There are no Ramachandran outliers to report.

5.3.2 Protein sidechains [i](#)

In the following table, the Percentiles column shows the percent sidechain outliers of the chain as a percentile score with respect to all X-ray entries followed by that with respect to entries of similar resolution.

The Analysed column shows the number of residues for which the sidechain conformation was analysed, and the total number of residues.

Mol	Chain	Analysed	Rotameric	Outliers	Percentiles	
1	A	158/166 (95%)	151 (96%)	7 (4%)	35	15
1	B	158/166 (95%)	152 (96%)	6 (4%)	40	20
All	All	316/332 (95%)	303 (96%)	13 (4%)	37	17

All (13) residues with a non-rotameric sidechain are listed below:

Mol	Chain	Res	Type
1	A	180	MET
1	A	211	LEU
1	A	222	ASP
1	A	275	LYS
1	A	305	ARG
1	A	310	LEU
1	A	333	ARG
1	B	195	ARG
1	B	222	ASP
1	B	227	GLN
1	B	305	ARG
1	B	309	ARG
1	B	334	GLN

Some sidechains can be flipped to improve hydrogen bonding and reduce clashes. All (3) such sidechains are listed below:

Mol	Chain	Res	Type
1	A	334	GLN
1	B	175	GLN
1	B	307	ASN

5.3.3 RNA ⓘ

There are no RNA molecules in this entry.

5.4 Non-standard residues in protein, DNA, RNA chains ⓘ

There are no non-standard protein/DNA/RNA residues in this entry.

5.5 Carbohydrates ⓘ

There are no carbohydrates in this entry.

5.6 Ligand geometry

2 ligands are modelled in this entry.

In the following table, the Counts columns list the number of bonds (or angles) for which Mogul statistics could be retrieved, the number of bonds (or angles) that are observed in the model and the number of bonds (or angles) that are defined in the chemical component dictionary. The Link column lists molecule types, if any, to which the group is linked. The Z score for a bond length (or angle) is the number of standard deviations the observed value is removed from the expected value. A bond length (or angle) with $|Z| > 2$ is considered an outlier worth inspection. RMSZ is the root-mean-square of all Z scores of the bond lengths (or angles).

Mol	Type	Chain	Res	Link	Bond lengths			Bond angles		
					Counts	RMSZ	$\# Z > 2$	Counts	RMSZ	$\# Z > 2$
2	1SY	B	401[A]	-	41,51,51	3.88	23 (56%)	48,80,80	3.46	21 (43%)
2	1SY	B	401[B]	-	41,51,51	3.50	21 (51%)	48,80,80	3.05	19 (39%)

In the following table, the Chirals column lists the number of chiral outliers, the number of chiral centers analysed, the number of these observed in the model and the number defined in the chemical component dictionary. Similar counts are reported in the Torsion and Rings columns. '-' means no outliers of that kind were identified.

Mol	Type	Chain	Res	Link	Chirals	Torsions	Rings
2	1SY	B	401[A]	-	-	0/22/62/62	0/5/7/7
2	1SY	B	401[B]	-	-	0/22/62/62	0/5/7/7

All (44) bond length outliers are listed below:

Mol	Chain	Res	Type	Atoms	Z	Observed(Å)	Ideal(Å)
2	B	401[B]	1SY	O31-C32	-10.83	1.27	1.41
2	B	401[A]	1SY	O31-C32	-9.30	1.29	1.41
2	B	401[A]	1SY	P27-O30	-8.46	1.18	1.54
2	B	401[A]	1SY	P27-O29	-6.95	1.25	1.51
2	B	401[B]	1SY	P18-O44	-6.63	1.26	1.51
2	B	401[B]	1SY	P18-O19	-6.56	1.26	1.54
2	B	401[B]	1SY	P27-O30	-6.28	1.28	1.54
2	B	401[A]	1SY	O4'-C4'	-6.09	1.31	1.45
2	B	401[A]	1SY	C5-C4	-5.95	1.27	1.40
2	B	401[A]	1SY	C38-C37	-5.74	1.29	1.41
2	B	401[B]	1SY	C5-C4	-5.55	1.28	1.40
2	B	401[A]	1SY	C22-C24	-5.31	1.38	1.53
2	B	401[A]	1SY	P18-O20	-5.29	1.46	1.60
2	B	401[A]	1SY	O28-C3'	-5.15	1.28	1.44
2	B	401[A]	1SY	C37-C36	-5.05	1.29	1.40
2	B	401[B]	1SY	O4'-C4'	-4.96	1.33	1.45

Continued on next page...

Continued from previous page...

Mol	Chain	Res	Type	Atoms	Z	Observed(Å)	Ideal(Å)
2	B	401[A]	1SY	P18-O19	-4.67	1.35	1.54
2	B	401[B]	1SY	C22-C24	-4.49	1.40	1.53
2	B	401[A]	1SY	C8-N7	-4.40	1.26	1.34
2	B	401[B]	1SY	C37-C36	-4.16	1.31	1.40
2	B	401[B]	1SY	C38-C37	-3.68	1.33	1.41
2	B	401[B]	1SY	P27-O28	-3.67	1.50	1.60
2	B	401[A]	1SY	C6-N01	-3.65	1.23	1.34
2	B	401[B]	1SY	C6-N01	-3.48	1.24	1.34
2	B	401[B]	1SY	C34-N35	-3.40	1.28	1.34
2	B	401[A]	1SY	C2'-C3'	-3.17	1.45	1.53
2	B	401[B]	1SY	C8-N7	-3.06	1.28	1.34
2	B	401[A]	1SY	O43-C38	-3.06	1.17	1.24
2	B	401[B]	1SY	O26-C25	-3.02	1.32	1.44
2	B	401[B]	1SY	O20-C21	-2.93	1.35	1.44
2	B	401[A]	1SY	C34-N35	-2.66	1.29	1.34
2	B	401[A]	1SY	C5-N7	-2.43	1.31	1.39
2	B	401[B]	1SY	C36-N42	-2.40	1.32	1.35
2	B	401[A]	1SY	C36-N42	-2.35	1.32	1.35
2	B	401[A]	1SY	O26-C25	-2.34	1.35	1.44
2	B	401[B]	1SY	P27-O29	-2.24	1.43	1.51
2	B	401[B]	1SY	O31-C24	-2.15	1.40	1.45
2	B	401[A]	1SY	P18-O44	-2.02	1.43	1.51
2	B	401[A]	1SY	C16-C4'	2.65	1.60	1.51
2	B	401[B]	1SY	C16-C4'	2.80	1.60	1.51
2	B	401[B]	1SY	O4'-C1'	4.04	1.46	1.41
2	B	401[B]	1SY	C38-N39	4.36	1.41	1.33
2	B	401[A]	1SY	O23-C22	5.40	1.55	1.43
2	B	401[A]	1SY	C38-N39	5.77	1.43	1.33

All (40) bond angle outliers are listed below:

Mol	Chain	Res	Type	Atoms	Z	Observed(°)	Ideal(°)
2	B	401[A]	1SY	N3-C2-N1	-13.50	118.56	128.89
2	B	401[B]	1SY	N3-C2-N1	-12.52	119.31	128.89
2	B	401[A]	1SY	C1'-N9-C4	-7.00	116.38	126.94
2	B	401[B]	1SY	N42-C40-N39	-5.41	119.21	127.44
2	B	401[B]	1SY	C37-C38-N39	-5.27	116.38	123.59
2	B	401[B]	1SY	C1'-N9-C4	-5.24	119.03	126.94
2	B	401[A]	1SY	C25-C24-C22	-4.83	96.04	115.21
2	B	401[A]	1SY	N41-C40-N42	-4.83	108.54	117.80
2	B	401[A]	1SY	N42-C40-N39	-4.00	121.34	127.44
2	B	401[B]	1SY	C36-C37-N35	-3.95	105.85	109.48

Continued on next page...

Continued from previous page...

Mol	Chain	Res	Type	Atoms	Z	Observed(°)	Ideal(°)
2	B	401[A]	1SY	C36-C37-N35	-3.87	105.92	109.48
2	B	401[A]	1SY	O28-C3'-C2'	-3.28	98.76	111.51
2	B	401[B]	1SY	C4-C5-N7	-3.17	106.57	109.48
2	B	401[B]	1SY	C25-C24-C22	-3.02	103.23	115.21
2	B	401[A]	1SY	C4-C5-N7	-2.97	106.75	109.48
2	B	401[A]	1SY	C2'-C1'-N9	-2.89	109.88	114.29
2	B	401[B]	1SY	C2'-C1'-N9	-2.87	109.91	114.29
2	B	401[A]	1SY	O31-C32-C21	-2.67	101.78	106.60
2	B	401[B]	1SY	O31-C32-C21	-2.61	101.89	106.60
2	B	401[A]	1SY	C38-N39-C40	-2.55	112.39	115.94
2	B	401[A]	1SY	O20-C21-C22	-2.41	102.12	111.51
2	B	401[A]	1SY	O4'-C4'-C16	-2.32	101.03	109.32
2	B	401[B]	1SY	O20-C21-C22	-2.10	103.33	111.51
2	B	401[B]	1SY	O31-C24-C22	2.12	109.42	105.15
2	B	401[B]	1SY	C32-N33-C36	2.40	130.56	126.94
2	B	401[A]	1SY	O30-P27-O28	2.63	117.06	106.49
2	B	401[B]	1SY	O28-C3'-C4'	2.72	120.67	109.99
2	B	401[A]	1SY	O23-C22-C21	2.90	119.53	111.16
2	B	401[A]	1SY	O28-C3'-C4'	2.91	121.39	109.99
2	B	401[B]	1SY	C38-N39-C40	3.13	120.28	115.94
2	B	401[A]	1SY	C24-O31-C32	3.13	113.16	109.72
2	B	401[B]	1SY	O20-C21-C32	3.15	122.29	110.02
2	B	401[B]	1SY	C4'-O4'-C1'	3.31	113.36	109.72
2	B	401[A]	1SY	O31-C24-C22	3.81	112.83	105.15
2	B	401[A]	1SY	O20-C21-C32	4.44	127.34	110.02
2	B	401[B]	1SY	N41-C40-N39	4.57	124.77	117.20
2	B	401[B]	1SY	O4'-C1'-N9	4.85	118.25	108.10
2	B	401[B]	1SY	C24-O31-C32	5.94	116.24	109.72
2	B	401[A]	1SY	O4'-C1'-N9	7.03	122.81	108.10
2	B	401[A]	1SY	N41-C40-N39	7.76	130.05	117.20

There are no chirality outliers.

There are no torsion outliers.

There are no ring outliers.

2 monomers are involved in 8 short contacts:

Mol	Chain	Res	Type	Clashes	Symm-Clashes
2	B	401[A]	1SY	5	0
2	B	401[B]	1SY	3	0

5.7 Other polymers

There are no such residues in this entry.

5.8 Polymer linkage issues

There are no chain breaks in this entry.

6 Fit of model and data [i](#)

6.1 Protein, DNA and RNA chains [i](#)

In the following table, the column labelled ‘#RSRZ> 2’ contains the number (and percentage) of RSRZ outliers, followed by percent RSRZ outliers for the chain as percentile scores relative to all X-ray entries and entries of similar resolution. The OWAB column contains the minimum, median, 95th percentile and maximum values of the occupancy-weighted average B-factor per residue. The column labelled ‘Q< 0.9’ lists the number of (and percentage) of residues with an average occupancy less than 0.9.

Mol	Chain	Analysed	<RSRZ>	#RSRZ>2	OWAB(Å ²)	Q<0.9
1	A	180/188 (95%)	-0.03	1 (0%) 90 90	11, 20, 38, 63	0
1	B	179/188 (95%)	0.20	9 (5%) 32 30	12, 24, 53, 82	0
All	All	359/376 (95%)	0.09	10 (2%) 56 54	11, 22, 46, 82	0

All (10) RSRZ outliers are listed below:

Mol	Chain	Res	Type	RSRZ
1	B	317	THR	4.8
1	B	318	ASP	4.4
1	B	304	SER	4.1
1	B	302	PRO	3.4
1	B	305	ARG	3.2
1	B	306	ASN	2.6
1	B	301	VAL	2.4
1	B	160	TRP	2.3
1	A	276	ALA	2.2
1	B	303	GLU	2.0

6.2 Non-standard residues in protein, DNA, RNA chains [i](#)

There are no non-standard protein/DNA/RNA residues in this entry.

6.3 Carbohydrates [i](#)

There are no carbohydrates in this entry.

6.4 Ligands [i](#)

In the following table, the Atoms column lists the number of modelled atoms in the group and the number defined in the chemical component dictionary. LLDF column lists the quality of electron density of the group with respect to its neighbouring residues in protein, DNA or RNA chains. The B-factors column lists the minimum, median, 95th percentile and maximum values of B factors of atoms in the group. The column labelled 'Q< 0.9' lists the number of atoms with occupancy less than 0.9.

Mol	Type	Chain	Res	Atoms	RSCC	RSR	LLDF	B-factors(\AA^2)	Q<0.9
2	1SY	B	401[B]	45/45	0.96	0.09	0.07	10,14,17,21	45
2	1SY	B	401[A]	45/45	0.96	0.09	-0.01	7,15,19,21	45

6.5 Other polymers [i](#)

There are no such residues in this entry.