



Full wwPDB X-ray Structure Validation Report ⓘ

Jan 31, 2016 – 08:44 PM GMT

PDB ID : 1LSH
Title : LIPID-PROTEIN INTERACTIONS IN LIPOVITELLIN
Authors : Thompson, J.R.; Banaszak, L.J.
Deposited on : 2002-05-17
Resolution : 1.90 Å(reported)

This is a Full wwPDB X-ray Structure Validation Report for a publicly released PDB entry.
We welcome your comments at validation@mail.wwpdb.org
A user guide is available at
<http://wwpdb.org/validation/2016/XrayValidationReportHelp>
with specific help available everywhere you see the ⓘ symbol.

The following versions of software and data (see [references ⓘ](#)) were used in the production of this report:

MolProbity : 4.02b-467
Mogul : 1.7 (RC4), CSD as536be (2015)
Xtriage (Phenix) : 1.9-1692
EDS : rb-20026688
Percentile statistics : 20151230.v01 (using entries in the PDB archive December 30th 2015)
Refmac : 5.8.0135
CCP4 : 6.5.0
Ideal geometry (proteins) : Engh & Huber (2001)
Ideal geometry (DNA, RNA) : Parkinson et al. (1996)
Validation Pipeline (wwPDB-VP) : trunk26865

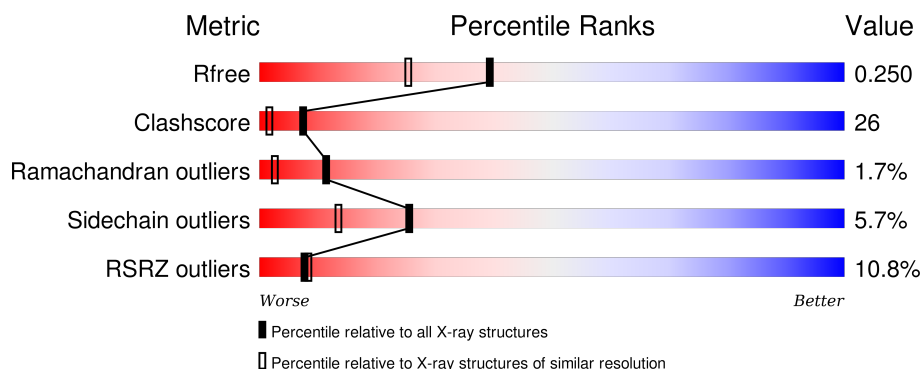
1 Overall quality at a glance

The following experimental techniques were used to determine the structure:

X-RAY DIFFRACTION

The reported resolution of this entry is 1.90 Å.

Percentile scores (ranging between 0-100) for global validation metrics of the entry are shown in the following graphic. The table shows the number of entries on which the scores are based.



Metric	Whole archive (#Entries)	Similar resolution (#Entries, resolution range(Å))
R_{free}	91344	4755 (1.90-1.90)
Clashscore	102246	5398 (1.90-1.90)
Ramachandran outliers	100387	5338 (1.90-1.90)
Sidechain outliers	100360	5339 (1.90-1.90)
RSRZ outliers	91569	4766 (1.90-1.90)

The table below summarises the geometric issues observed across the polymeric chains and their fit to the electron density. The red, orange, yellow and green segments on the lower bar indicate the fraction of residues that contain outliers for ≥ 3 , 2, 1 and 0 types of geometric quality criteria. A grey segment represents the fraction of residues that are not modelled. The numeric value for each fraction is indicated below the corresponding segment, with a dot representing fractions $\leq 5\%$. The upper red bar (where present) indicates the fraction of residues that have poor fit to the electron density. The numeric value is given above the bar.

Mol	Chain	Length	Quality of chain
1	A	1056	
2	B	319	

The following table lists non-polymeric compounds, carbohydrate monomers and non-standard residues in protein, DNA, RNA chains that are outliers for geometric or electron-density-fit criteria:

Mol	Type	Chain	Res	Chirality	Geometry	Clashes	Electron density
3	PLD	A	2001[A]	-	-	-	X
3	PLD	A	2001[B]	-	-	-	X
3	PLD	A	2002	-	-	-	X
3	PLD	A	2005[A]	-	-	-	X
3	PLD	A	2005[B]	-	-	-	X
3	PLD	A	2006	X	-	-	X
3	PLD	A	2007[A]	-	-	-	X
3	PLD	A	2007[B]	-	-	-	X
4	UPL	A	2008	X	-	-	X
4	UPL	A	2009	X	-	-	X
4	UPL	A	2011	-	-	-	X
4	UPL	A	2012	-	-	-	X
4	UPL	A	2013	-	-	-	X
4	UPL	A	2014	-	-	-	X
4	UPL	A	2019	-	-	-	X
4	UPL	A	2024	-	-	-	X
4	UPL	A	2025	-	-	-	X
4	UPL	A	2030	-	-	-	X

2 Entry composition

There are 5 unique types of molecules in this entry. The entry contains 10935 atoms, of which 0 are hydrogens and 0 are deuteriums.

In the tables below, the ZeroOcc column contains the number of atoms modelled with zero occupancy, the AltConf column contains the number of residues with at least one atom in alternate conformation and the Trace column contains the number of residues modelled with at most 2 atoms.

- Molecule 1 is a protein called LIPOVITELLIN (LV-1N, LV-1C).

Mol	Chain	Residues	Atoms					ZeroOcc	AltConf	Trace
1	A	955	Total	C	N	O	S	15	65	0
			7781	4960	1362	1418	41			

There are 9 discrepancies between the modelled and reference sequences:

Chain	Residue	Modelled	Actual	Comment	Reference
A	88	GLY	ALA	CONFLICT	UNP Q91062
A	396	ALA	TYR	CONFLICT	UNP Q91062
A	417	ASN	HIS	CONFLICT	UNP Q91062
A	469	LYS	ASP	CONFLICT	UNP Q91062
A	782	GLY	ARG	CONFLICT	UNP Q91062
A	834	SER	HIS	CONFLICT	UNP Q91062
A	?	-	GLN	DELETION	UNP Q91062
A	1013	SER	HIS	CONFLICT	UNP Q91062
A	1064	THR	GLN	CONFLICT	UNP Q91062

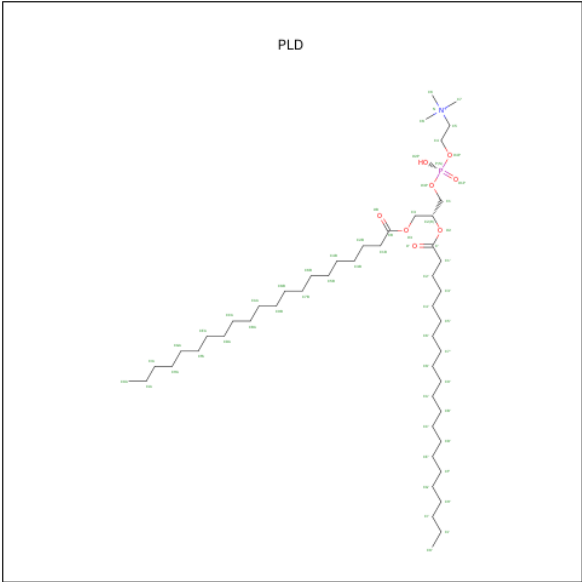
- Molecule 2 is a protein called LIPOVITELLIN (LV-2).

Mol	Chain	Residues	Atoms					ZeroOcc	AltConf	Trace
2	B	174	Total	C	N	O	S	3	4	0
			1375	886	250	231	8			

There are 2 discrepancies between the modelled and reference sequences:

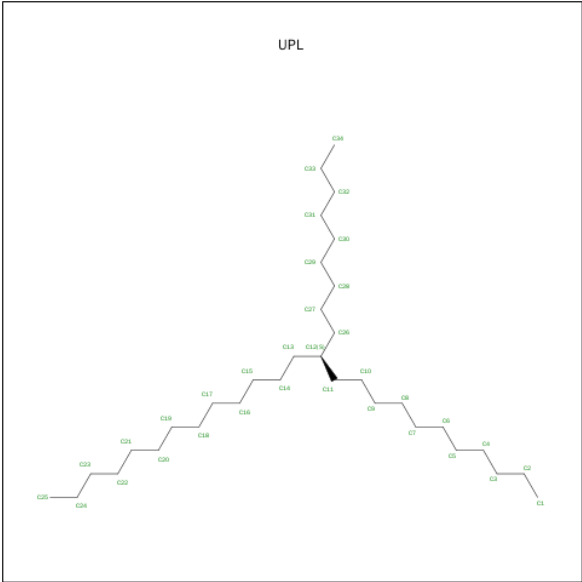
Chain	Residue	Modelled	Actual	Comment	Reference
B	1473	GLY	LYS	CONFLICT	UNP Q91062
B	1489	ALA	LYS	CONFLICT	UNP Q91062

- Molecule 3 is DIUNDECYL PHOSPHATIDYL CHOLINE (three-letter code: PLD) (formula: $C_{50}H_{101}NO_8P$).



Mol	Chain	Residues	Atoms					ZeroOcc	AltConf
3	A	1	Total	C	N	O	P	0	1
			57	47	1	8	1		
3	A	1	Total	C	O	P		0	0
			35	26	8	1			
3	B	1	Total	C	N	O	P	0	0
			31	21	1	8	1		
3	A	1	Total	C	O	P		0	0
			34	25	8	1			
3	A	1	Total	C	O	P		0	1
			53	44	8	1			
3	A	1	Total	C	O	P		0	0
			34	25	8	1			
3	A	1	Total	C	O	P		0	1
			40	31	8	1			

- Molecule 4 is UNKNOWN BRANCHED FRAGMENT OF PHOSPHOLIPID (three-letter code: UPL) (formula: C₃₄H₇₀).



Mol	Chain	Residues	Atoms	ZeroOcc	AltConf
4	A	1	Total C 17 17	0	0
4	A	1	Total C 15 15	0	0
4	B	1	Total C 14 14	0	0
4	A	1	Total C 19 19	0	0
4	A	1	Total C 17 17	0	0
4	A	1	Total C 16 16	0	0
4	A	1	Total C 16 16	0	0
4	A	1	Total C 13 13	0	0
4	B	1	Total C 13 13	0	0
4	A	1	Total C 11 11	0	0
4	A	1	Total C 12 12	0	0
4	A	1	Total C 10 10	0	0
4	A	1	Total C 6 6	0	0
4	B	1	Total C 9 9	0	0

Continued on next page...

Continued from previous page...

Mol	Chain	Residues	Atoms	ZeroOcc	AltConf
4	A	1	Total C 6 6	0	0
4	B	1	Total C 9 9	0	0
4	A	1	Total C 6 6	0	0
4	A	1	Total C 8 8	0	0
4	A	1	Total C 8 8	0	0
4	B	1	Total C 7 7	0	0
4	B	1	Total C 7 7	0	0
4	A	1	Total C 9 9	0	0
4	A	1	Total C 7 7	0	0
4	B	1	Total C 7 7	0	0
4	A	1	Total C 6 6	0	0
4	B	1	Total C 6 6	0	0
4	A	1	Total C 6 6	0	0
4	A	1	Total C 7 7	0	0
4	A	1	Total C 6 6	0	0
4	A	1	Total C 5 5	0	0
4	A	1	Total C 6 6	0	0
4	A	1	Total C 5 5	0	0
4	A	1	Total C 5 5	0	0
4	A	1	Total C 5 5	0	0
4	A	1	Total C 5 5	0	0

Continued on next page...

Continued from previous page...

Mol	Chain	Residues	Atoms	ZeroOcc	AltConf
4	B	1	Total C 5 5	0	0
4	B	1	Total C 7 7	0	0
4	B	1	Total C 5 5	0	0
4	B	1	Total C 5 5	0	0
4	A	1	Total C 5 5	0	0
4	A	1	Total C 10 10	0	0
4	B	1	Total C 6 6	0	0
4	A	1	Total C 6 6	0	0

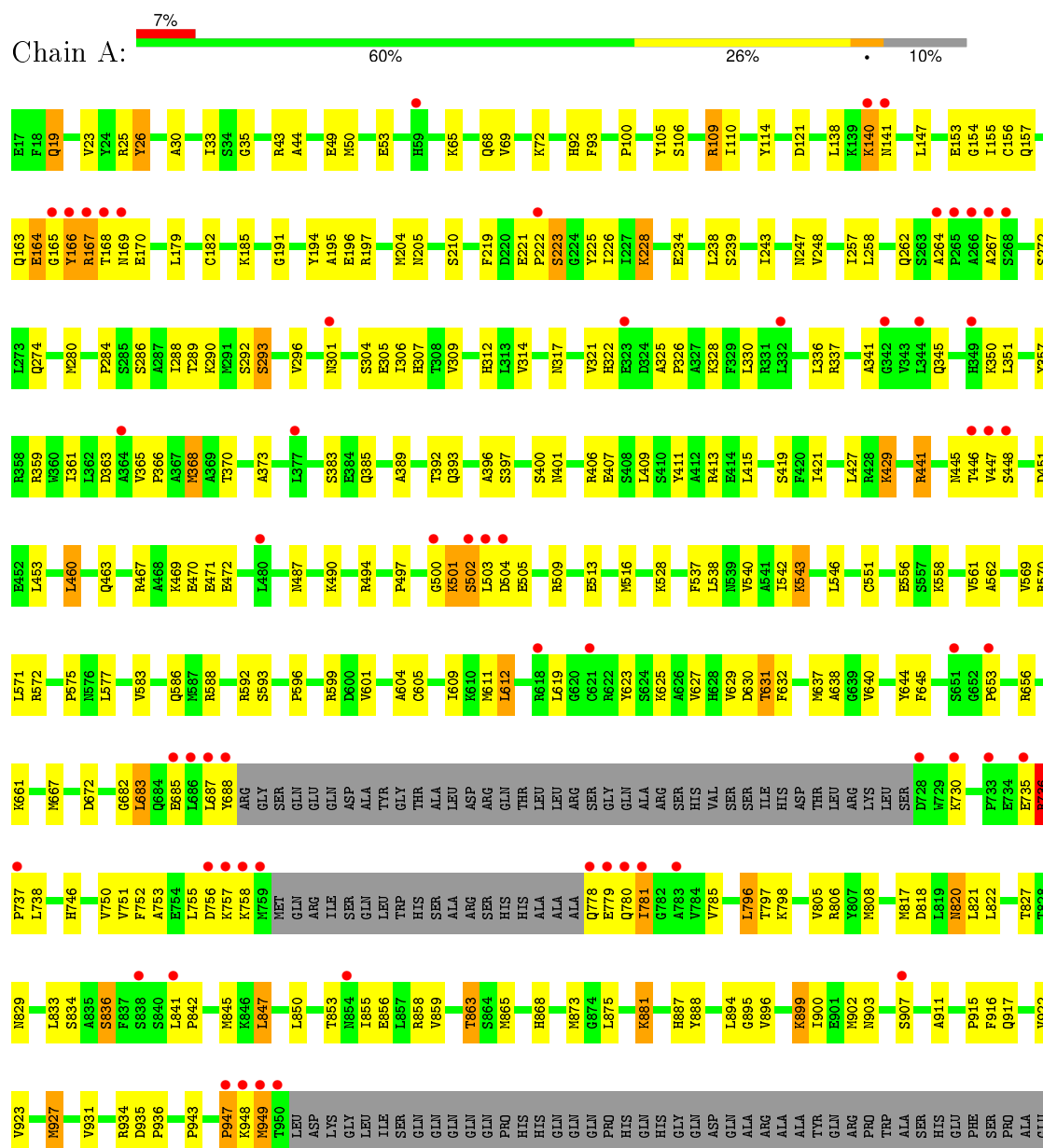
- Molecule 5 is water.

Mol	Chain	Residues	Atoms	ZeroOcc	AltConf
5	A	1002	Total O 1002 1002	0	1
5	B	120	Total O 120 120	0	0

3 Residue-property plots

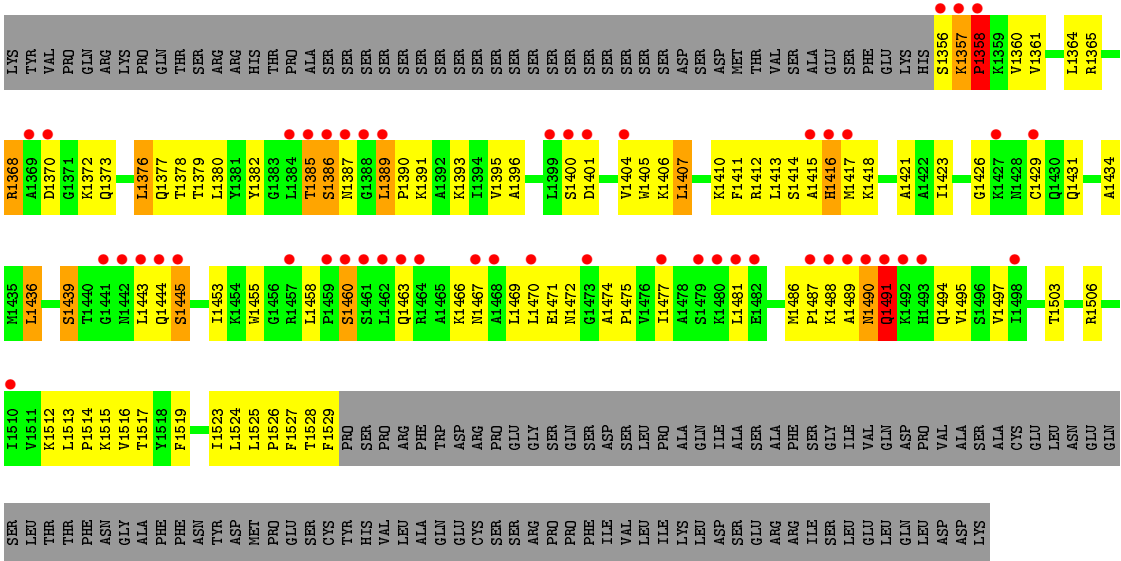
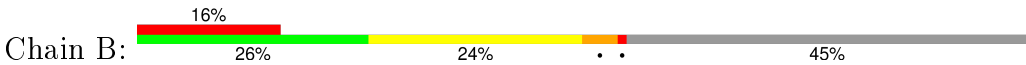
These plots are drawn for all protein, RNA and DNA chains in the entry. The first graphic for a chain summarises the proportions of errors displayed in the second graphic. The second graphic shows the sequence view annotated by issues in geometry and electron density. Residues are color-coded according to the number of geometric quality criteria for which they contain at least one outlier: green = 0, yellow = 1, orange = 2 and red = 3 or more. A red dot above a residue indicates a poor fit to the electron density ($RSRZ > 2$). Stretches of 2 or more consecutive residues without any outlier are shown as a green connector. Residues present in the sample, but not in the model, are shown in grey.

- Molecule 1: LIPOVITELLIN (LV-1N, LV-1C)





● Molecule 2: LIPOVITELLIN (LV-2)



4 Data and refinement statistics

Property	Value	Source
Space group	C 1 2 1	Depositor
Cell constants a, b, c, α , β , γ	190.17Å 84.52Å 89.53Å 90.00° 100.39° 90.00°	Depositor
Resolution (Å)	21.60 – 1.90 21.60 – 1.90	Depositor EDS
% Data completeness (in resolution range)	74.3 (21.60-1.90) 74.4 (21.60-1.90)	Depositor EDS
R_{merge}	(Not available)	Depositor
R_{sym}	0.06	Depositor
$\langle I/\sigma(I) \rangle$ ¹	1.41 (at 1.90Å)	Xtriage
Refinement program	CNS 0.9,1.0,1.1	Depositor
R, R_{free}	0.193 , 0.255 0.208 , 0.250	Depositor DCC
R_{free} test set	983 reflections (1.20%)	DCC
Wilson B-factor (Å ²)	33.5	Xtriage
Anisotropy	0.043	Xtriage
Bulk solvent k_{sol} (e/Å ³), B_{sol} (Å ²)	0.32 , 110.8	EDS
Estimated twinning fraction	No twinning to report.	Xtriage
L-test for twinning ²	$\langle L \rangle = 0.47$, $\langle L^2 \rangle = 0.30$	Xtriage
Outliers	0 of 81695 reflections	Xtriage
F_o, F_c correlation	0.97	EDS
Total number of atoms	10935	wwPDB-VP
Average B, all atoms (Å ²)	48.0	wwPDB-VP

Xtriage's analysis on translational NCS is as follows: *The largest off-origin peak in the Patterson function is 5.58% of the height of the origin peak. No significant pseudotranslation is detected.*

¹Intensities estimated from amplitudes.

²Theoretical values of $\langle |L| \rangle$, $\langle L^2 \rangle$ for acentric reflections are 0.5, 0.375 respectively for untwinned datasets, and 0.333, 0.2 for perfectly twinned datasets.

5 Model quality

5.1 Standard geometry

Bond lengths and bond angles in the following residue types are not validated in this section: UPL, PCA, PLD

The Z score for a bond length (or angle) is the number of standard deviations the observed value is removed from the expected value. A bond length (or angle) with $|Z| > 5$ is considered an outlier worth inspection. RMSZ is the root-mean-square of all Z scores of the bond lengths (or angles).

Mol	Chain	Bond lengths		Bond angles	
		RMSZ	$\# Z > 5$	RMSZ	$\# Z > 5$
1	A	0.87	6/8093 (0.1%)	1.05	10/10921 (0.1%)
2	B	0.57	0/1412	0.91	1/1901 (0.1%)
All	All	0.83	6/9505 (0.1%)	1.03	11/12822 (0.1%)

Chiral center outliers are detected by calculating the chiral volume of a chiral center and verifying if the center is modelled as a planar moiety or with the opposite hand. A planarity outlier is detected by checking planarity of atoms in a peptide group, atoms in a mainchain group or atoms of a sidechain that are expected to be planar.

Mol	Chain	#Chirality outliers	#Planarity outliers
1	A	0	5

All (6) bond length outliers are listed below:

Mol	Chain	Res	Type	Atoms	Z	Observed(Å)	Ideal(Å)
1	A	834[A]	SER	CB-OG	5.68	1.49	1.42
1	A	834[B]	SER	CB-OG	5.68	1.49	1.42
1	A	593	SER	CB-OG	5.66	1.49	1.42
1	A	196	GLU	CG-CD	5.25	1.59	1.51
1	A	26	TYR	CG-CD1	5.07	1.45	1.39
1	A	26	TYR	CD1-CE1	5.05	1.47	1.39

All (11) bond angle outliers are listed below:

Mol	Chain	Res	Type	Atoms	Z	Observed(°)	Ideal(°)
1	A	441	ARG	NE-CZ-NH1	-9.57	115.52	120.30
1	A	875	LEU	CA-CB-CG	-8.54	95.65	115.30
1	A	806	ARG	NE-CZ-NH1	-7.44	116.58	120.30
1	A	121	ASP	CB-CG-OD2	-6.33	112.61	118.30
1	A	460	LEU	CA-CB-CG	5.89	128.86	115.30

Continued on next page...

Continued from previous page...

Mol	Chain	Res	Type	Atoms	Z	Observed(°)	Ideal(°)
1	A	736	ARG	NE-CZ-NH1	-5.81	117.40	120.30
1	A	257	ILE	CB-CA-C	-5.66	100.28	111.60
1	A	656	ARG	NE-CZ-NH2	-5.24	117.68	120.30
1	A	571	LEU	CA-CB-CG	5.19	127.24	115.30
2	B	1376	LEU	CB-CG-CD2	-5.18	102.20	111.00
1	A	934	ARG	NE-CZ-NH1	5.08	122.84	120.30

There are no chirality outliers.

All (5) planarity outliers are listed below:

Mol	Chain	Res	Type	Group
1	A	210	SER	Mainchain
1	A	631	THR	Mainchain
1	A	796	LEU	Mainchain
1	A	820	ASN	Mainchain
1	A	863	THR	Mainchain

5.2 Too-close contacts ⓘ

In the following table, the Non-H and H(model) columns list the number of non-hydrogen atoms and hydrogen atoms in the chain respectively. The H(added) column lists the number of hydrogen atoms added and optimized by MolProbity. The Clashes column lists the number of clashes within the asymmetric unit, whereas Symm-Clashes lists symmetry related clashes.

Mol	Chain	Non-H	H(model)	H(added)	Clashes	Symm-Clashes
1	A	7781	0	8167	350	0
2	B	1375	0	1488	101	0
3	A	253	0	205	51	0
3	B	31	0	33	8	0
4	A	273	0	494	46	0
4	B	100	0	179	19	0
5	A	1002	0	0	64	0
5	B	120	0	0	11	0
All	All	10935	0	10566	518	0

The all-atom clashscore is defined as the number of clashes found per 1000 atoms (including hydrogen atoms). The all-atom clashscore for this structure is 26.

All (518) close contacts within the same asymmetric unit are listed below, sorted by their clash magnitude.

Atom-1	Atom-2	Interatomic distance (Å)	Clash overlap (Å)
1:A:543:LYS:H	1:A:543:LYS:HE3	1.09	1.11
3:A:2004:PLD:H2A2	3:A:2004:PLD:H32	1.35	1.05
1:A:1011:LYS:HD3	1:A:1012:GLN:H	1.25	1.01
3:A:2005[B]:PLD:H5 ¹	3:A:2007[B]:PLD:H8A1	1.46	0.97
1:A:588:ARG:HD2	1:A:609[A]:ILE:HD13	1.46	0.95
1:A:469:LYS:HE3	1:A:471:GLU:HB2	1.46	0.95
1:A:366:PRO:HB3	1:A:397:SER:HB3	1.49	0.94
1:A:543:LYS:CE	1:A:543:LYS:H	1.82	0.93
2:B:1490:ASN:HD22	2:B:1491:GLN:H	0.97	0.92
1:A:543:LYS:N	1:A:543:LYS:HE3	1.85	0.91
1:A:856:GLU:HG2	1:A:858[A]:ARG:HH12	1.32	0.91
1:A:805[B]:VAL:HG12	1:A:821:LEU:HB3	1.52	0.90
2:B:1436:LEU:HD12	2:B:1453:ILE:HG12	1.53	0.90
1:A:907:SER:HB2	1:A:1071:GLN:HG2	1.55	0.88
2:B:1489:ALA:HB2	2:B:1517:THR:OG1	1.74	0.87
1:A:368:MET:HG3	1:A:373:ALA:HB2	1.54	0.87
1:A:317:ASN:ND2	1:A:322[A]:HIS:H	1.73	0.86
1:A:317:ASN:ND2	1:A:322[B]:HIS:H	1.73	0.86
2:B:1490:ASN:ND2	2:B:1491:GLN:H	1.74	0.85
1:A:194:TYR:HB2	5:A:2910:HOH:O	1.76	0.84
1:A:751:VAL:HG23	5:A:2684:HOH:O	1.76	0.83
4:A:2015:UPL:H62	4:B:2016:UPL:H12	1.58	0.83
2:B:1490:ASN:HD22	2:B:1491:GLN:N	1.74	0.82
1:A:219:PHE:HD2	1:A:226:ILE:HD11	1.44	0.82
3:B:2003:PLD:H5A1	4:B:2046:UPL:C5	2.10	0.81
2:B:1389:LEU:H	2:B:1389:LEU:HD12	1.46	0.81
4:A:2009:UPL:H271	4:A:2009:UPL:H142	1.63	0.80
1:A:948:LYS:HA	1:A:1005[A]:ARG:NH1	1.96	0.79
1:A:1011:LYS:HD3	1:A:1012:GLN:N	1.98	0.79
1:A:1054:VAL:HG21	4:A:2012:UPL:H131	1.62	0.79
3:A:2006:PLD:H5A2	4:A:2018:UPL:H52	1.63	0.78
1:A:592:ARG:NH1	3:B:2003:PLD:H52	1.96	0.78
3:A:2002:PLD:OB	3:A:2002:PLD:H11	1.84	0.78
4:A:2011:UPL:H12	4:A:2011:UPL:H62	1.64	0.78
2:B:1373:GLN:HG2	2:B:1400:SER:HA	1.64	0.78
2:B:1506:ARG:HD2	5:B:107:HOH:O	1.83	0.78
1:A:23:VAL:HG23	1:A:264:ALA:HB2	1.66	0.78
1:A:317:ASN:HD22	1:A:321:VAL:HA	1.49	0.77
1:A:516:MET:HE2	5:A:2818:HOH:O	1.86	0.76
1:A:543:LYS:HE2	5:A:2056:HOH:O	1.86	0.75
2:B:1385:THR:HG22	2:B:1386:SER:N	2.02	0.74
3:A:2004:PLD:C2B	3:A:2004:PLD:H32	2.15	0.73

Continued on next page...

Continued from previous page...

Atom-1	Atom-2	Interatomic distance (Å)	Clash overlap (Å)
1:A:561[B]:VAL:HG12	1:A:604:ALA:HA	1.70	0.73
1:A:366:PRO:CB	1:A:397:SER:HB3	2.18	0.72
1:A:599:ARG:HH11	1:A:599:ARG:HG3	1.53	0.72
2:B:1373:GLN:CG	2:B:1400:SER:HA	2.20	0.72
1:A:1005[A]:ARG:HH22	1:A:1031:ARG:HH21	1.38	0.71
1:A:856:GLU:CG	1:A:858[A]:ARG:HH12	2.03	0.71
1:A:415:LEU:HG	1:A:421:ILE:CD1	2.21	0.70
2:B:1385:THR:HG22	2:B:1386:SER:H	1.57	0.70
1:A:856:GLU:HG2	1:A:858[A]:ARG:NH1	2.07	0.69
2:B:1488:LYS:HA	2:B:1516:VAL:HA	1.72	0.69
1:A:163:GLN:HG2	5:A:2131:HOH:O	1.93	0.69
1:A:735:GLU:O	1:A:737:PRO:HD3	1.93	0.69
2:B:1416:HIS:HB2	2:B:1418:LYS:HE2	1.73	0.69
1:A:1068:LEU:HD21	2:B:1360:VAL:HG13	1.74	0.69
1:A:948:LYS:HA	1:A:1005[A]:ARG:HH12	1.57	0.68
1:A:900:ILE:HD11	4:A:2013:UPL:C12	2.23	0.68
1:A:330:LEU:HD11	5:A:2902:HOH:O	1.93	0.68
1:A:730[B]:LYS:HD2	5:A:2938:HOH:O	1.92	0.68
2:B:1423:ILE:HD13	4:B:2021:UPL:H13	1.76	0.67
1:A:494:ARG:HD2	5:A:2756:HOH:O	1.94	0.67
1:A:1070:LEU:CD2	1:A:1071:GLN:H	2.07	0.67
1:A:219:PHE:CD2	1:A:226:ILE:HD11	2.30	0.67
2:B:1370:ASP:OD1	2:B:1372:LYS:HG3	1.93	0.67
1:A:469:LYS:C	1:A:469:LYS:HD2	2.13	0.67
1:A:592:ARG:HD2	2:B:1524:LEU:HB3	1.75	0.67
1:A:888:TYR:CE1	1:A:927:MET:HG3	2.30	0.67
3:A:2004:PLD:H2A2	3:A:2004:PLD:C3	2.20	0.67
1:A:661[B]:LYS:HE2	5:A:2104:HOH:O	1.94	0.66
1:A:368:MET:HG3	1:A:373:ALA:CB	2.23	0.66
1:A:936[B]:PRO:HD2	5:A:2680:HOH:O	1.95	0.66
4:A:2011:UPL:C6	4:A:2011:UPL:H12	2.26	0.66
1:A:1068:LEU:HD23	1:A:1069:GLU:N	2.11	0.66
1:A:661[B]:LYS:HD3	5:A:2749:HOH:O	1.96	0.66
1:A:1070:LEU:HD22	1:A:1071:GLN:H	1.62	0.65
1:A:1020:LEU:HD21	2:B:1364:LEU:HD21	1.79	0.65
1:A:33[B]:ILE:HD11	1:A:43[B]:ARG:HB2	1.78	0.65
3:A:2002:PLD:H32	3:A:2002:PLD:H4A2	1.78	0.65
3:A:2006:PLD:H1'2	3:A:2006:PLD:C3	2.26	0.64
1:A:441:ARG:NH1	1:A:441:ARG:HG2	2.12	0.64
2:B:1529:PHE:HB2	5:B:1032:HOH:O	1.97	0.64
4:B:2010:UPL:H102	4:B:2049:UPL:H11	1.79	0.64

Continued on next page...

Continued from previous page...

Atom-1	Atom-2	Interatomic distance (Å)	Clash overlap (Å)
1:A:286:SER:HB3	1:A:290[A]:LYS:HD3	1.78	0.64
1:A:558:LYS:HA	1:A:601[A]:VAL:CG2	2.28	0.64
4:A:2015:UPL:H62	4:B:2016:UPL:C1	2.27	0.63
1:A:65:LYS:HG3	1:A:100:PRO:HG3	1.81	0.63
1:A:501:LYS:O	1:A:502:SER:HB3	1.97	0.63
2:B:1443:LEU:HD11	5:B:922:HOH:O	1.98	0.63
1:A:540[A]:VAL:HG11	1:A:575:PRO:HG3	1.80	0.63
3:A:2006:PLD:H4A1	4:A:2018:UPL:H71	1.79	0.63
1:A:858[B]:ARG:HD2	1:A:899:LYS:HG2	1.80	0.63
1:A:164:GLU:HG2	5:A:2512:HOH:O	1.98	0.62
2:B:1491:GLN:HE21	2:B:1494:GLN:HB2	1.64	0.62
1:A:558:LYS:HA	1:A:601[A]:VAL:HG21	1.81	0.62
2:B:1486:MET:HG3	2:B:1519:PHE:HE2	1.64	0.62
1:A:949:MET:HE1	5:A:2586:HOH:O	1.99	0.62
4:A:2008:UPL:H101	4:A:2008:UPL:C27	2.29	0.62
2:B:1436:LEU:HB2	4:B:2033:UPL:H13	1.80	0.62
1:A:389:ALA:O	1:A:393:GLN:HG3	2.00	0.62
4:A:2009:UPL:C27	4:A:2009:UPL:H142	2.26	0.62
1:A:785:VAL:HG21	1:A:845:MET:CE	2.30	0.61
1:A:441:ARG:NE	5:A:3009:HOH:O	2.33	0.61
1:A:881:LYS:NZ	5:A:2283:HOH:O	2.32	0.61
2:B:1389:LEU:HD13	5:B:766:HOH:O	2.00	0.61
1:A:463:GLN:O	1:A:467[B]:ARG:HG2	2.00	0.61
1:A:561[A]:VAL:HG23	5:A:2138:HOH:O	1.99	0.61
3:A:2006:PLD:H1'2	3:A:2006:PLD:O3	2.01	0.61
1:A:357:TYR:O	1:A:361:ILE:HG13	2.01	0.61
2:B:1469:LEU:HD11	4:B:2023:UPL:H11	1.82	0.61
1:A:805[B]:VAL:CG1	1:A:821:LEU:HB3	2.30	0.61
1:A:166:TYR:C	1:A:167:ARG:O	2.36	0.61
1:A:542:ILE:HA	1:A:543:LYS:HE3	1.82	0.60
1:A:469:LYS:NZ	1:A:471:GLU:HG2	2.16	0.60
3:A:2001[A]:PLD:HB'2	3:A:2002:PLD:H1A2	1.83	0.60
1:A:833:LEU:HD23	1:A:859:VAL:HG22	1.82	0.60
1:A:138:LEU:HD12	1:A:225:TYR:CD2	2.36	0.60
1:A:141:ASN:HB2	5:A:2219:HOH:O	2.01	0.60
1:A:1031:ARG:HB3	1:A:1047[B]:ASP:OD1	2.01	0.60
2:B:1385:THR:OG1	2:B:1391:LYS:HD3	2.01	0.60
2:B:1389:LEU:HD23	2:B:1415:ALA:N	2.16	0.60
1:A:551:CYS:SG	1:A:586[A]:GLN:NE2	2.74	0.60
1:A:168:THR:O	1:A:169:ASN:HB2	2.01	0.60
1:A:753:ALA:HB2	4:A:2011:UPL:H52	1.83	0.59

Continued on next page...

Continued from previous page...

Atom-1	Atom-2	Interatomic distance (Å)	Clash overlap (Å)
1:A:35:GLY:HA3	1:A:43[B]:ARG:HD3	1.83	0.59
1:A:855:ILE:HG21	4:A:2024:UPL:H21	1.82	0.59
1:A:935:ASP:HB2	1:A:936[A]:PRO:HD2	1.84	0.59
1:A:1011:LYS:O	1:A:1012:GLN:HB2	2.03	0.59
2:B:1385:THR:CG2	2:B:1386:SER:H	2.15	0.59
2:B:1490:ASN:ND2	2:B:1491:GLN:N	2.44	0.59
1:A:1054:VAL:CG2	4:A:2012:UPL:H131	2.33	0.59
1:A:407:GLU:HG3	1:A:411:TYR:CZ	2.38	0.59
1:A:1043:LYS:HE2	5:A:2185:HOH:O	2.02	0.59
2:B:1455:TRP:HB2	2:B:1458:LEU:HD11	1.83	0.59
1:A:19:GLN:HG2	1:A:223:SER:HB2	1.85	0.59
4:A:2012:UPL:H61	4:A:2029:UPL:C9	2.33	0.58
1:A:785:VAL:HG21	1:A:845:MET:HE1	1.83	0.58
1:A:314:VAL:HG11	1:A:357:TYR:CE1	2.37	0.58
1:A:301:ASN:OD1	1:A:301:ASN:N	2.32	0.58
1:A:1005[A]:ARG:NH2	1:A:1031:ARG:HH21	1.99	0.58
1:A:25:ARG:HH12	1:A:262:GLN:NE2	2.02	0.58
1:A:947:PRO:O	1:A:1005[A]:ARG:NH2	2.37	0.58
2:B:1443:LEU:O	2:B:1444:GLN:HG2	2.03	0.58
2:B:1423:ILE:HG22	2:B:1434:ALA:O	2.03	0.58
1:A:640[B]:VAL:HG23	3:A:2002:PLD:H2'2	1.86	0.58
4:A:2008:UPL:H151	4:A:2008:UPL:C19	2.34	0.58
1:A:248[B]:VAL:HG23	1:A:873:MET:SD	2.44	0.58
1:A:630:ASP:O	4:A:2009:UPL:H141	2.04	0.57
2:B:1389:LEU:CD2	2:B:1414:SER:HA	2.35	0.57
1:A:638:ALA:HB2	3:A:2002:PLD:H3A1	1.86	0.57
1:A:592:ARG:HH12	3:B:2003:PLD:H52	1.68	0.57
1:A:630:ASP:O	4:A:2009:UPL:H111	2.05	0.57
1:A:1006:PRO:HG2	1:A:1031:ARG:NH2	2.18	0.57
1:A:469:LYS:HD3	5:A:2877:HOH:O	2.05	0.57
1:A:366:PRO:HB3	1:A:397:SER:CB	2.30	0.57
1:A:415:LEU:HG	1:A:421:ILE:HD13	1.86	0.57
1:A:503:LEU:O	1:A:505:GLU:HG2	2.04	0.57
1:A:911:ALA:O	1:A:1065:LYS:HA	2.04	0.57
2:B:1389:LEU:HD22	2:B:1414:SER:HA	1.87	0.57
2:B:1385:THR:CG2	2:B:1386:SER:N	2.68	0.57
1:A:653:PRO:HD2	1:A:688:TYR:CZ	2.40	0.57
1:A:35:GLY:HA3	1:A:43[B]:ARG:CD	2.35	0.56
1:A:588:ARG:HD2	1:A:609[A]:ILE:CD1	2.27	0.56
1:A:1031:ARG:NH1	5:A:2640:HOH:O	2.37	0.56
3:A:2001[A]:PLD:HB'2	3:A:2002:PLD:C1B	2.36	0.56

Continued on next page...

Continued from previous page...

Atom-1	Atom-2	Interatomic distance (Å)	Clash overlap (Å)
1:A:605:CYS:O	1:A:609[A]:ILE:HG13	2.05	0.56
1:A:746[B]:HIS:CD2	5:A:2910:HOH:O	2.58	0.56
3:A:2004:PLD:H2'2	2:B:1527:PHE:CE1	2.41	0.56
2:B:1523:ILE:HG23	3:B:2003:PLD:H11	1.88	0.56
4:A:2011:UPL:C1	4:A:2011:UPL:H62	2.36	0.56
1:A:779:GLU:HG2	5:A:2605:HOH:O	2.04	0.56
1:A:661[A]:LYS:NZ	5:A:2098:HOH:O	2.39	0.55
1:A:1024:VAL:O	1:A:1024:VAL:HG13	2.05	0.55
2:B:1405:TRP:CH2	2:B:1407:LEU:HB2	2.41	0.55
2:B:1410:LYS:O	2:B:1421:ALA:HA	2.06	0.55
1:A:166:TYR:O	1:A:167:ARG:C	2.43	0.55
4:B:2010:UPL:C16	4:B:2021:UPL:H11	2.36	0.55
1:A:286:SER:HB3	1:A:290[B]:LYS:HD3	1.88	0.55
2:B:1486:MET:HG3	2:B:1519:PHE:CE2	2.42	0.55
1:A:238:LEU:HB3	1:A:248[B]:VAL:HG23	1.87	0.55
4:B:2023:UPL:H52	4:B:2023:UPL:H13	1.88	0.55
3:B:2003:PLD:H4A2	4:B:2027:UPL:H42	1.87	0.55
2:B:1460:SER:O	2:B:1463:GLN:HB3	2.07	0.55
1:A:756:ASP:HB3	1:A:757:LYS:HE2	1.89	0.55
1:A:141:ASN:HB3	5:A:2218:HOH:O	2.07	0.55
1:A:204:MET:HE1	5:A:2591:HOH:O	2.06	0.55
2:B:1470[B]:LEU:HD11	2:B:1514:PRO:HD2	1.89	0.55
1:A:317:ASN:HD21	1:A:322[B]:HIS:H	1.53	0.54
1:A:286:SER:HB3	1:A:290[B]:LYS:CD	2.37	0.54
4:A:2009:UPL:H121	3:B:2003:PLD:H4'1	1.89	0.54
2:B:1389:LEU:HD12	2:B:1389:LEU:N	2.18	0.54
1:A:317:ASN:HD21	1:A:322[A]:HIS:H	1.53	0.54
1:A:845:MET:HE3	1:A:850:LEU:HD21	1.90	0.54
4:A:2009:UPL:H271	4:A:2009:UPL:C14	2.37	0.54
1:A:923:VAL:HB	1:A:1052:VAL:HB	1.90	0.54
3:A:2004:PLD:HDA2	4:A:2034:UPL:H51	1.89	0.54
1:A:469:LYS:HD2	1:A:470:GLU:N	2.23	0.54
1:A:239:SER:OG	1:A:247:ASN:ND2	2.41	0.54
1:A:1005[A]:ARG:HB2	1:A:1005[A]:ARG:NH1	2.23	0.54
2:B:1477:ILE:O	2:B:1481:LEU:HG	2.08	0.53
1:A:205:ASN:HD21	1:A:243:ILE:H	1.55	0.53
1:A:638:ALA:HB1	3:A:2002:PLD:H1'1	1.90	0.53
1:A:219:PHE:HB2	1:A:226:ILE:HG13	1.90	0.53
1:A:500:GLY:C	1:A:502:SER:H	2.12	0.53
2:B:1416:HIS:CB	2:B:1418:LYS:HE2	2.39	0.53
1:A:1068:LEU:HD23	1:A:1069:GLU:H	1.73	0.53

Continued on next page...

Continued from previous page...

Atom-1	Atom-2	Interatomic distance (Å)	Clash overlap (Å)
1:A:467[A]:ARG:NE	1:A:469:LYS:HB2	2.23	0.53
2:B:1416:HIS:O	2:B:1418:LYS:HG3	2.09	0.53
1:A:293[B]:SER:HB2	1:A:818:ASP:OD2	2.08	0.53
2:B:1490:ASN:O	2:B:1491:GLN:HB2	2.07	0.53
1:A:829:ASN:HB3	3:A:2006:PLD:H6'1	1.91	0.53
1:A:778:GLN:HG2	1:A:781:ILE:HG22	1.91	0.53
2:B:1386:SER:HB2	2:B:1412:ARG:HH22	1.73	0.52
1:A:25:ARG:NH1	1:A:262:GLN:CD	2.62	0.52
1:A:447:VAL:HG13	1:A:448:SER:N	2.22	0.52
1:A:836:SER:HB2	1:A:858[A]:ARG:NH2	2.24	0.52
1:A:577[B]:LEU:HD23	1:A:623:TYR:CE1	2.44	0.52
2:B:1444:GLN:O	2:B:1445:SER:HB2	2.08	0.52
1:A:195:ALA:HB2	5:A:2687:HOH:O	2.08	0.52
1:A:798:LYS:HB3	1:A:827:THR:HG22	1.92	0.52
4:B:2010:UPL:H162	4:B:2021:UPL:H11	1.92	0.52
1:A:936[A]:PRO:CD	5:A:2680:HOH:O	2.58	0.52
2:B:1356:SER:O	2:B:1357:LYS:HB3	2.09	0.52
1:A:392[A]:THR:HG23	5:A:2514:HOH:O	2.09	0.52
1:A:497:PRO:HB2	1:A:542:ILE:HD13	1.92	0.52
2:B:1411:PHE:CD1	2:B:1412:ARG:N	2.78	0.52
3:A:2001[A]:PLD:CD'	3:A:2002:PLD:H1A2	2.39	0.51
1:A:833:LEU:CD2	1:A:859:VAL:HG22	2.40	0.51
1:A:672:ASP:O	1:A:746[A]:HIS:HA	2.10	0.51
3:A:2006:PLD:H2A1	4:A:2013:UPL:H42	1.93	0.51
1:A:441:ARG:HH11	1:A:441:ARG:HG2	1.76	0.51
1:A:543:LYS:CD	1:A:543:LYS:H	2.23	0.51
4:A:2042:UPL:H31	4:A:2047:UPL:H11	1.93	0.51
1:A:305:GLU:O	1:A:309:VAL:HG12	2.09	0.51
1:A:467[A]:ARG:HE	1:A:469:LYS:HB2	1.74	0.51
2:B:1455:TRP:CZ2	2:B:1466:LYS:HD2	2.45	0.51
2:B:1515:LYS:HB2	2:B:1515:LYS:NZ	2.26	0.51
4:B:2027:UPL:C7	4:B:2028:UPL:H41	2.41	0.51
1:A:429[A]:LYS:HD2	1:A:752:PHE:CZ	2.45	0.51
1:A:900:ILE:HD11	4:A:2013:UPL:C13	2.41	0.51
1:A:49:GLU:OE2	1:A:72[A]:LYS:HE3	2.11	0.51
4:A:2013:UPL:H32	4:A:2017:UPL:H32	1.92	0.51
2:B:1356:SER:O	2:B:1358:PRO:HD3	2.10	0.51
3:A:2002:PLD:CB	3:A:2002:PLD:H11	2.41	0.51
1:A:588:ARG:HA	1:A:609[A]:ILE:HD11	1.93	0.50
1:A:363:ASP:O	1:A:366:PRO:HD2	2.12	0.50
1:A:409:LEU:HD13	1:A:453:LEU:HD22	1.93	0.50

Continued on next page...

Continued from previous page...

Atom-1	Atom-2	Interatomic distance (Å)	Clash overlap (Å)
1:A:35:GLY:CA	1:A:43[B]:ARG:HD3	2.41	0.50
2:B:1356:SER:HB2	2:B:1382:TYR:HE1	1.77	0.50
2:B:1474:ALA:HB3	2:B:1475:PRO:HD3	1.93	0.50
1:A:672:ASP:O	1:A:746[B]:HIS:HA	2.11	0.50
1:A:312:HIS:CE1	1:A:328:LYS:HE2	2.46	0.50
2:B:1467:ASN:O	2:B:1471:GLU:HB3	2.11	0.50
1:A:856:GLU:O	1:A:858[A]:ARG:NH2	2.45	0.50
3:A:2006:PLD:HA'1	4:A:2026:UPL:H13	1.93	0.50
1:A:301:ASN:HB2	5:A:2574:HOH:O	2.11	0.49
1:A:900:ILE:HD11	4:A:2013:UPL:H131	1.94	0.49
1:A:392[B]:THR:OG1	1:A:427[B]:LEU:HD21	2.13	0.49
1:A:490[A]:LYS:HE2	5:A:2862:HOH:O	2.12	0.49
1:A:165:GLY:HA2	5:A:2791:HOH:O	2.11	0.49
1:A:290[B]:LYS:HE2	1:A:337:ARG:O	2.10	0.49
2:B:1472:ASN:O	2:B:1475:PRO:HD2	2.13	0.49
3:A:2005[B]:PLD:C5'	3:A:2007[B]:PLD:H8A1	2.28	0.49
1:A:738:LEU:HB2	1:A:755:LEU:O	2.12	0.49
1:A:888:TYR:CD1	1:A:927:MET:HG3	2.47	0.49
1:A:1016[A]:LYS:H	1:A:1016[A]:LYS:NZ	2.10	0.49
4:A:2013:UPL:H151	4:A:2026:UPL:H11	1.94	0.49
1:A:292:SER:O	1:A:881:LYS:HE3	2.12	0.49
1:A:1058:SER:C	1:A:1060:LYS:H	2.14	0.49
1:A:902:MET:HG2	1:A:903:ASN:N	2.28	0.49
1:A:687:LEU:HG	1:A:688:TYR:CE1	2.48	0.49
3:A:2001[A]:PLD:CE'	3:A:2002:PLD:H1A2	2.43	0.49
1:A:847:LEU:O	1:A:850:LEU:HB2	2.13	0.49
2:B:1524:LEU:H	3:B:2003:PLD:H51	1.78	0.48
1:A:836:SER:HB2	1:A:858[A]:ARG:HH22	1.78	0.48
1:A:943:PRO:HG3	1:A:947:PRO:HD3	1.95	0.48
2:B:1368:ARG:CZ	5:B:845:HOH:O	2.62	0.48
1:A:441:ARG:NH2	5:A:2359:HOH:O	2.46	0.48
1:A:1029[A]:ARG:NH1	5:A:2811:HOH:O	2.37	0.48
1:A:509[A]:ARG:H	1:A:736:ARG:HH22	1.61	0.48
4:A:2022:UPL:H52	4:A:2048:UPL:H11	1.96	0.48
1:A:682:GLY:O	1:A:683:LEU:C	2.52	0.48
1:A:586[B]:GLN:HE22	1:A:645:PHE:HE1	1.61	0.48
1:A:306:ILE:HD13	1:A:336:LEU:HD23	1.96	0.48
1:A:359:ARG:HD3	5:A:2334:HOH:O	2.14	0.48
1:A:205:ASN:HD21	1:A:243:ILE:N	2.12	0.47
2:B:1512:LYS:NZ	5:B:118:HOH:O	2.47	0.47
1:A:1065:LYS:NZ	5:A:2946:HOH:O	2.46	0.47

Continued on next page...

Continued from previous page...

Atom-1	Atom-2	Interatomic distance (Å)	Clash overlap (Å)
1:A:509[B]:ARG:H	1:A:736:ARG:HH22	1.61	0.47
4:A:2036:UPL:H13	2:B:1364:LEU:HD11	1.96	0.47
2:B:1361:VAL:HG22	2:B:1379:THR:HG22	1.95	0.47
1:A:157:GLN:HG2	5:A:2233:HOH:O	2.13	0.47
1:A:935:ASP:CB	1:A:936[A]:PRO:HD2	2.44	0.47
4:A:2008:UPL:H151	4:A:2008:UPL:H191	1.95	0.47
1:A:1057:THR:O	1:A:1058:SER:CB	2.61	0.47
1:A:629:VAL:HG22	3:A:2004:PLD:H8A1	1.96	0.47
1:A:644:TYR:CE1	3:A:2004:PLD:C1B	2.98	0.47
1:A:296:VAL:HG11	1:A:936[B]:PRO:HG3	1.97	0.47
1:A:936[A]:PRO:HD3	5:A:2680:HOH:O	2.14	0.47
1:A:798:LYS:NZ	5:A:2571:HOH:O	2.47	0.47
1:A:288:ILE:CD1	1:A:808:MET:HG3	2.45	0.47
4:A:2050:UPL:H22	4:A:2050:UPL:H52	1.58	0.47
2:B:1378:THR:HA	2:B:1395:VAL:O	2.15	0.47
2:B:1385:THR:O	2:B:1387:ASN:N	2.47	0.47
2:B:1470[B]:LEU:CD1	2:B:1514:PRO:HD2	2.45	0.47
1:A:288:ILE:HD12	1:A:808:MET:HG3	1.97	0.47
1:A:542:ILE:CA	1:A:543:LYS:HE3	2.45	0.47
1:A:441:ARG:CD	5:A:3009:HOH:O	2.62	0.47
1:A:392[B]:THR:OG1	1:A:427[B]:LEU:CD2	2.64	0.47
1:A:1058:SER:C	1:A:1060:LYS:N	2.69	0.47
1:A:154:GLY:HA2	1:A:280[A]:MET:SD	2.54	0.47
1:A:537:PHE:CE1	1:A:583:VAL:HG21	2.50	0.47
1:A:33[B]:ILE:HD11	1:A:43[B]:ARG:CB	2.42	0.46
2:B:1444:GLN:O	2:B:1445:SER:CB	2.63	0.46
1:A:612:LEU:HD12	1:A:612:LEU:N	2.29	0.46
1:A:153:GLU:OE2	1:A:234:GLU:OE2	2.33	0.46
1:A:469:LYS:HZ2	1:A:471:GLU:H	1.61	0.46
1:A:168:THR:C	1:A:170[A]:GLU:H	2.18	0.46
1:A:406:ARG:HD2	5:A:2372:HOH:O	2.15	0.46
1:A:469:LYS:NZ	1:A:471:GLU:CG	2.79	0.46
1:A:916:PHE:CD2	1:A:1054:VAL:HG11	2.50	0.46
2:B:1469:LEU:N	2:B:1469:LEU:HD23	2.30	0.46
1:A:922:VAL:CG2	1:A:1052:VAL:HG12	2.45	0.46
1:A:503:LEU:HD12	1:A:503:LEU:HA	1.74	0.46
1:A:205:ASN:ND2	1:A:243:ILE:H	2.12	0.46
3:A:2002:PLD:HTA2	3:A:2002:PLD:HBA2	1.75	0.46
1:A:197:ARG:NH2	5:A:2649:HOH:O	2.48	0.46
1:A:43[B]:ARG:HA	1:A:931:VAL:HG11	1.97	0.45
1:A:441:ARG:CG	1:A:441:ARG:HH11	2.28	0.45

Continued on next page...

Continued from previous page...

Atom-1	Atom-2	Interatomic distance (Å)	Clash overlap (Å)
1:A:644:TYR:CD1	3:A:2004:PLD:H1A1	2.52	0.45
3:A:2006:PLD:CD'	4:A:2026:UPL:H13	2.47	0.45
1:A:166:TYR:O	1:A:167:ARG:O	2.35	0.45
1:A:1065:LYS:HD2	2:B:1365:ARG:HD2	1.98	0.45
1:A:23:VAL:CG2	1:A:264:ALA:HB2	2.40	0.45
1:A:865:MET:HE2	4:A:2019:UPL:H71	1.99	0.45
1:A:625:LYS:HB2	3:A:2004:PLD:OB	2.17	0.45
1:A:627:VAL:HG21	3:A:2004:PLD:H3A1	1.99	0.45
1:A:469:LYS:HG3	1:A:472:GLU:HB2	1.98	0.45
1:A:631:THR:OG1	4:A:2009:UPL:H272	2.17	0.45
2:B:1387:ASN:H	2:B:1389:LEU:HD11	1.80	0.45
2:B:1389:LEU:HA	2:B:1390:PRO:HD3	1.83	0.45
4:A:2030:UPL:H32	4:A:2030:UPL:H62	1.69	0.45
1:A:756:ASP:CG	1:A:757:LYS:HE2	2.37	0.45
1:A:556:GLU:HG3	5:A:2104:HOH:O	2.16	0.45
1:A:528:LYS:HE3	5:A:2389:HOH:O	2.17	0.45
1:A:561[A]:VAL:HA	1:A:604:ALA:HB1	1.98	0.45
1:A:599:ARG:HG3	1:A:599:ARG:NH1	2.27	0.45
2:B:1488:LYS:N	5:B:957:HOH:O	2.50	0.45
4:A:2038:UPL:H52	2:B:1360:VAL:HG11	1.98	0.45
2:B:1466:LYS:HG3	4:B:2021:UPL:C9	2.47	0.45
1:A:26:TYR:CZ	1:A:258:LEU:HD13	2.52	0.45
2:B:1487:PRO:HB2	5:B:957:HOH:O	2.16	0.44
1:A:730[A]:LYS:NZ	5:A:2600:HOH:O	2.47	0.44
1:A:168:THR:C	1:A:170[B]:GLU:H	2.20	0.44
2:B:1376:LEU:HD21	4:B:2010:UPL:H82	1.99	0.44
2:B:1406:LYS:HE3	2:B:1406:LYS:HB2	1.55	0.44
1:A:797:THR:HA	1:A:827:THR:O	2.17	0.44
1:A:1058:SER:HA	5:A:2333:HOH:O	2.16	0.44
1:A:109:ARG:NH1	5:A:2272:HOH:O	2.50	0.44
1:A:341:ALA:O	1:A:345:GLN:HG3	2.16	0.44
1:A:1070:LEU:O	1:A:1071:GLN:HG3	2.17	0.44
1:A:301:ASN:ND2	1:A:304[A]:SER:HB3	2.32	0.44
1:A:325:ALA:N	1:A:326:PRO:CD	2.80	0.44
2:B:1503:THR:HG21	2:B:1506:ARG:NH1	2.32	0.44
4:A:2022:UPL:H52	4:A:2048:UPL:C1	2.47	0.44
1:A:637:MET:HE3	5:A:2700:HOH:O	2.18	0.44
2:B:1523:ILE:HD13	3:B:2003:PLD:H1A1	1.99	0.44
1:A:345:GLN:HB3	5:A:2482:HOH:O	2.18	0.44
1:A:25:ARG:NH1	1:A:262:GLN:OE1	2.51	0.44
1:A:796:LEU:HD12	1:A:796:LEU:HA	1.78	0.44

Continued on next page...

Continued from previous page...

Atom-1	Atom-2	Interatomic distance (Å)	Clash overlap (Å)
1:A:781:ILE:HG13	5:A:2573:HOH:O	2.18	0.44
3:A:2002:PLD:H2'1	3:A:2002:PLD:H5'2	1.59	0.43
4:A:2015:UPL:H111	4:A:2015:UPL:H81	1.49	0.43
4:A:2038:UPL:C6	2:B:1380:LEU:HD22	2.48	0.43
1:A:538:LEU:HD22	1:A:570:ARG:HG3	2.00	0.43
1:A:105:TYR:CD1	1:A:110:ILE:HD13	2.53	0.43
3:A:2004:PLD:H2A2	3:A:2004:PLD:O'	2.18	0.43
1:A:644:TYR:CE1	3:A:2004:PLD:H1A1	2.53	0.43
1:A:829:ASN:ND2	1:A:863:THR:OG1	2.51	0.43
1:A:248[B]:VAL:HG13	1:A:1041:LEU:HD21	1.99	0.43
1:A:445:ASN:OD1	1:A:446:THR:HG23	2.18	0.43
1:A:290[B]:LYS:HZ1	1:A:370:THR:CG2	2.31	0.43
1:A:383:SER:OG	1:A:385:GLN:HG3	2.18	0.43
1:A:917:GLN:O	1:A:1056:PRO:HG2	2.18	0.43
1:A:543:LYS:HD2	1:A:546:LEU:HD12	1.99	0.43
1:A:737:PRO:O	1:A:738:LEU:C	2.56	0.43
1:A:226:ILE:HG12	5:A:2445:HOH:O	2.18	0.43
2:B:1506:ARG:HG2	2:B:1524:LEU:HD23	2.01	0.43
1:A:596:PRO:HD2	1:A:632:PHE:CG	2.54	0.43
1:A:785:VAL:HG21	1:A:845:MET:HE3	2.01	0.43
1:A:350[B]:LYS:HG3	1:A:351:LEU:HG	2.01	0.43
1:A:1016[A]:LYS:H	1:A:1016[A]:LYS:HZ1	1.65	0.43
1:A:93:PHE:CD1	4:A:2014:UPL:H41	2.54	0.43
1:A:43[A]:ARG:HA	1:A:931:VAL:HG11	2.00	0.43
2:B:1439:SER:HB3	5:B:1037:HOH:O	2.18	0.43
1:A:896:VAL:HG11	4:A:2013:UPL:H112	2.00	0.43
1:A:561[B]:VAL:HG23	1:A:562:ALA:N	2.34	0.43
1:A:730[B]:LYS:CD	5:A:2938:HOH:O	2.60	0.43
2:B:1455:TRP:CE2	2:B:1466:LYS:HD2	2.54	0.43
1:A:537:PHE:CE2	1:A:538:LEU:HD23	2.54	0.43
2:B:1525:LEU:HA	2:B:1526:PRO:HD3	1.88	0.43
1:A:156[A]:CYS:HA	1:A:182[A]:CYS:HA	2.00	0.42
1:A:894:LEU:HG	1:A:895:GLY:N	2.34	0.42
1:A:947:PRO:HA	1:A:1031:ARG:HH22	1.85	0.42
1:A:822:LEU:HD21	5:A:2289:HOH:O	2.18	0.42
1:A:1030:LEU:HD21	4:A:2025:UPL:H62	2.02	0.42
1:A:537:PHE:HE1	1:A:583:VAL:HG21	1.85	0.42
1:A:572[B]:ARG:HG2	5:A:2498:HOH:O	2.20	0.42
3:A:2002:PLD:H3'2	5:A:2541:HOH:O	2.19	0.42
1:A:509[B]:ARG:NH1	1:A:513[B]:GLU:OE1	2.53	0.42
1:A:868:HIS:ND1	1:A:887:HIS:HE1	2.17	0.42

Continued on next page...

Continued from previous page...

Atom-1	Atom-2	Interatomic distance (Å)	Clash overlap (Å)
2:B:1411:PHE:CE1	2:B:1413:LEU:HD13	2.54	0.42
1:A:179:LEU:O	1:A:182[A]:CYS:SG	2.78	0.42
1:A:561[B]:VAL:HA	1:A:604:ALA:HB1	2.01	0.42
1:A:447:VAL:CG1	1:A:448:SER:N	2.82	0.42
1:A:156[B]:CYS:HA	1:A:182[B]:CYS:HA	2.02	0.42
1:A:50:MET:HA	1:A:68:GLN:O	2.20	0.42
1:A:922:VAL:HG23	1:A:1052:VAL:HG12	2.02	0.42
1:A:401:ASN:HB2	5:A:2355:HOH:O	2.19	0.42
1:A:301:ASN:HD22	1:A:304[A]:SER:CB	2.33	0.42
2:B:1513:LEU:N	2:B:1513:LEU:HD23	2.35	0.42
1:A:638:ALA:CB	3:A:2002:PLD:H3A1	2.49	0.42
1:A:947:PRO:HA	1:A:1031:ARG:NH2	2.35	0.42
1:A:1008:MET:HE2	5:A:2754:HOH:O	2.20	0.42
1:A:841:LEU:HD12	1:A:842:PRO:HD2	2.02	0.42
2:B:1377:GLN:O	2:B:1396:ALA:HA	2.20	0.41
1:A:114:TYR:HA	1:A:274:GLN:O	2.20	0.41
1:A:899:LYS:HB3	1:A:899:LYS:HE2	1.70	0.41
4:B:2010:UPL:C10	4:B:2049:UPL:H11	2.46	0.41
1:A:1058:SER:O	1:A:1060:LYS:N	2.53	0.41
2:B:1393:LYS:HE2	2:B:1393:LYS:HB3	1.93	0.41
1:A:1063:ILE:HG22	1:A:1064:THR:N	2.35	0.41
1:A:469:LYS:HZ1	1:A:471:GLU:HG2	1.82	0.41
4:B:2010:UPL:H91	4:B:2049:UPL:H11	2.03	0.41
2:B:1443:LEU:HD12	2:B:1443:LEU:HA	1.60	0.41
1:A:301:ASN:HD22	1:A:304[A]:SER:HB3	1.86	0.41
2:B:1368:ARG:NH2	5:B:845:HOH:O	2.53	0.41
3:A:2002:PLD:H7A2	5:A:2688:HOH:O	2.20	0.41
4:A:2015:UPL:H82	4:B:2044:UPL:H12	2.01	0.41
2:B:1417:MET:HG3	2:B:1417:MET:O	2.20	0.41
2:B:1426:GLY:HA3	2:B:1431:GLN:HB3	2.03	0.41
1:A:572[A]:ARG:HD2	1:A:611:MET:O	2.20	0.41
2:B:1387:ASN:H	2:B:1389:LEU:CD1	2.34	0.41
1:A:289:THR:OG1	1:A:290[B]:LYS:NZ	2.53	0.41
1:A:644:TYR:CE1	3:A:2004:PLD:H1A2	2.56	0.41
1:A:469:LYS:CE	1:A:471:GLU:HB2	2.34	0.41
2:B:1389:LEU:HD21	5:B:113:HOH:O	2.21	0.41
1:A:935:ASP:HB2	1:A:936[A]:PRO:CD	2.49	0.41
1:A:25:ARG:HG2	1:A:53:GLU:HG2	2.03	0.41
1:A:30:ALA:HB3	4:A:2014:UPL:C16	2.50	0.41
1:A:155:ILE:O	1:A:182[B]:CYS:HB3	2.21	0.41
1:A:619:LEU:HD23	1:A:619:LEU:HA	1.86	0.41

Continued on next page...

Continued from previous page...

Atom-1	Atom-2	Interatomic distance (Å)	Clash overlap (Å)
1:A:272:SER:N	5:A:2423:HOH:O	2.50	0.41
1:A:738:LEU:HA	1:A:738:LEU:HD23	1.95	0.41
3:A:2006:PLD:H32	3:A:2006:PLD:H1'2	2.02	0.41
1:A:781:ILE:HG12	1:A:781:ILE:O	2.20	0.41
1:A:569:VAL:HG13	1:A:572[B]:ARG:HD2	2.02	0.41
1:A:1012:GLN:HA	1:A:1026:PHE:O	2.21	0.40
1:A:471:GLU:HG2	1:A:735:GLU:HG3	2.04	0.40
2:B:1370:ASP:CG	2:B:1372:LYS:HG3	2.42	0.40
1:A:936[B]:PRO:HG3	5:A:2508:HOH:O	2.21	0.40
1:A:243:ILE:HD12	5:A:2709:HOH:O	2.19	0.40
1:A:365:VAL:O	1:A:368:MET:HG2	2.20	0.40
1:A:1057:THR:O	1:A:1058:SER:HB2	2.22	0.40
2:B:1495:VAL:HG11	4:B:2045:UPL:H31	2.02	0.40
1:A:92[B]:HIS:CE1	5:A:2674:HOH:O	2.73	0.40
1:A:185:LYS:HE2	5:A:2171:HOH:O	2.22	0.40
1:A:44:ALA:HB2	1:A:931:VAL:HB	2.03	0.40
1:A:756:ASP:CB	1:A:757:LYS:HE2	2.49	0.40
1:A:469:LYS:HZ1	1:A:471:GLU:CG	2.34	0.40
2:B:1497:VAL:HG11	4:B:2046:UPL:H21	2.02	0.40
2:B:1515:LYS:CB	2:B:1515:LYS:NZ	2.85	0.40

There are no symmetry-related clashes.

5.3 Torsion angles [i](#)

5.3.1 Protein backbone [i](#)

In the following table, the Percentiles column shows the percent Ramachandran outliers of the chain as a percentile score with respect to all X-ray entries followed by that with respect to entries of similar resolution.

The Analysed column shows the number of residues for which the backbone conformation was analysed, and the total number of residues.

Mol	Chain	Analysed	Favoured	Allowed	Outliers	Percentiles
1	A	1012/1056 (96%)	959 (95%)	42 (4%)	11 (1%)	17 6
2	B	176/319 (55%)	153 (87%)	15 (8%)	8 (4%)	3 0
All	All	1188/1375 (86%)	1112 (94%)	57 (5%)	19 (2%)	11 3

All (19) Ramachandran outliers are listed below:

Mol	Chain	Res	Type
1	A	267	ALA
1	A	1058	SER
2	B	1357	LYS
2	B	1385	THR
2	B	1386	SER
1	A	1012	GLN
1	A	1056	PRO
1	A	1057	THR
2	B	1491	GLN
1	A	140	LYS
1	A	504	ASP
1	A	1059	SER
2	B	1416	HIS
2	B	1460	SER
1	A	167	ARG
2	B	1445	SER
1	A	502	SER
1	A	1071	GLN
2	B	1358	PRO

5.3.2 Protein sidechains ⓘ

In the following table, the Percentiles column shows the percent sidechain outliers of the chain as a percentile score with respect to all X-ray entries followed by that with respect to entries of similar resolution.

The Analysed column shows the number of residues for which the sidechain conformation was analysed, and the total number of residues.

Mol	Chain	Analysed	Rotameric	Outliers	Percentiles	
1	A	881/900 (98%)	831 (94%)	50 (6%)	25	13
2	B	148/277 (53%)	137 (93%)	11 (7%)	17	7
All	All	1029/1177 (87%)	968 (94%)	61 (6%)	25	12

All (61) residues with a non-rotameric sidechain are listed below:

Mol	Chain	Res	Type
1	A	19	GLN
1	A	69	VAL
1	A	106[A]	SER
1	A	106[B]	SER
1	A	109	ARG

Continued on next page...

Continued from previous page...

Mol	Chain	Res	Type
1	A	140	LYS
1	A	147	LEU
1	A	164	GLU
1	A	166	TYR
1	A	221	GLU
1	A	222	PRO
1	A	223	SER
1	A	228[A]	LYS
1	A	228[B]	LYS
1	A	284	PRO
1	A	293[A]	SER
1	A	293[B]	SER
1	A	307	HIS
1	A	368	MET
1	A	413[A]	ARG
1	A	413[B]	ARG
1	A	419	SER
1	A	429[A]	LYS
1	A	429[B]	LYS
1	A	451	ASP
1	A	460	LEU
1	A	487	ASN
1	A	501	LYS
1	A	543	LYS
1	A	612	LEU
1	A	683	LEU
1	A	685	GLU
1	A	736	ARG
1	A	780	GLN
1	A	781	ILE
1	A	817	MET
1	A	820	ASN
1	A	836	SER
1	A	847	LEU
1	A	853	THR
1	A	881	LYS
1	A	899	LYS
1	A	915	PRO
1	A	927	MET
1	A	947	PRO
1	A	949	MET
1	A	1011	LYS

Continued on next page...

Continued from previous page...

Mol	Chain	Res	Type
1	A	1016[A]	LYS
1	A	1016[B]	LYS
1	A	1071	GLN
2	B	1358	PRO
2	B	1368	ARG
2	B	1389	LEU
2	B	1401	ASP
2	B	1407	LEU
2	B	1429	CYS
2	B	1436	LEU
2	B	1439	SER
2	B	1490	ASN
2	B	1491	GLN
2	B	1528	THR

Some sidechains can be flipped to improve hydrogen bonding and reduce clashes. All (17) such sidechains are listed below:

Mol	Chain	Res	Type
1	A	42	ASN
1	A	169	ASN
1	A	205	ASN
1	A	247	ASN
1	A	262	GLN
1	A	317	ASN
1	A	423	ASN
1	A	829	ASN
1	A	867	GLN
1	A	887	HIS
2	B	1387	ASN
2	B	1428	ASN
2	B	1430	GLN
2	B	1442	ASN
2	B	1463	GLN
2	B	1490	ASN
2	B	1491	GLN

5.3.3 RNA ⓘ

There are no RNA molecules in this entry.

5.4 Non-standard residues in protein, DNA, RNA chains ⓘ

1 non-standard protein/DNA/RNA residue is modelled in this entry.

In the following table, the Counts columns list the number of bonds (or angles) for which Mogul statistics could be retrieved, the number of bonds (or angles) that are observed in the model and the number of bonds (or angles) that are defined in the chemical component dictionary. The Link column lists molecule types, if any, to which the group is linked. The Z score for a bond length (or angle) is the number of standard deviations the observed value is removed from the expected value. A bond length (or angle) with $|Z| > 2$ is considered an outlier worth inspection. RMSZ is the root-mean-square of all Z scores of the bond lengths (or angles).

Mol	Type	Chain	Res	Link	Bond lengths			Bond angles		
					Counts	RMSZ	$\# Z > 2$	Counts	RMSZ	$\# Z > 2$
1	PCA	A	17	1	7,8,9	1.99	1 (14%)	9,10,12	2.17	6 (66%)

In the following table, the Chirals column lists the number of chiral outliers, the number of chiral centers analysed, the number of these observed in the model and the number defined in the chemical component dictionary. Similar counts are reported in the Torsion and Rings columns. '-' means no outliers of that kind were identified.

Mol	Type	Chain	Res	Link	Chirals	Torsions	Rings
1	PCA	A	17	1	-	0/0/11/13	0/1/1/1

All (1) bond length outliers are listed below:

Mol	Chain	Res	Type	Atoms	Z	Observed(Å)	Ideal(Å)
1	A	17	PCA	CB-CG	-5.09	1.40	1.53

All (6) bond angle outliers are listed below:

Mol	Chain	Res	Type	Atoms	Z	Observed(°)	Ideal(°)
1	A	17	PCA	CA-N-CD	-3.18	103.15	113.81
1	A	17	PCA	OE-CD-CG	-2.89	120.37	126.81
1	A	17	PCA	CB-CA-C	-2.81	108.92	112.76
1	A	17	PCA	CB-CG-CD	-2.54	99.06	104.22
1	A	17	PCA	O-C-CA	-2.05	120.02	125.44
1	A	17	PCA	CG-CD-N	2.23	116.06	108.04

There are no chirality outliers.

There are no torsion outliers.

There are no ring outliers.

No monomer is involved in short contacts.

5.5 Carbohydrates ⓘ

There are no carbohydrates in this entry.

5.6 Ligand geometry ⓘ

53 ligands are modelled in this entry.

In the following table, the Counts columns list the number of bonds (or angles) for which Mogul statistics could be retrieved, the number of bonds (or angles) that are observed in the model and the number of bonds (or angles) that are defined in the chemical component dictionary. The Link column lists molecule types, if any, to which the group is linked. The Z score for a bond length (or angle) is the number of standard deviations the observed value is removed from the expected value. A bond length (or angle) with $|Z| > 2$ is considered an outlier worth inspection. RMSZ is the root-mean-square of all Z scores of the bond lengths (or angles).

Mol	Type	Chain	Res	Link	Bond lengths			Bond angles		
					Counts	RMSZ	# $ Z > 2$	Counts	RMSZ	# $ Z > 2$
3	PLD	A	2001[A]	-	52,52,59	1.10	5 (9%)	56,60,67	2.19	13 (23%)
3	PLD	A	2001[B]	-	52,52,59	10.82	6 (11%)	56,60,67	3.00	15 (26%)
3	PLD	A	2002	-	34,34,59	1.53	6 (17%)	37,39,67	1.84	7 (18%)
3	PLD	A	2004	-	33,33,59	1.74	5 (15%)	36,38,67	2.12	14 (38%)
3	PLD	A	2005[A]	-	45,45,59	1.30	4 (8%)	48,50,67	2.21	11 (22%)
3	PLD	A	2005[B]	-	45,45,59	1.28	4 (8%)	48,50,67	2.20	11 (22%)
3	PLD	A	2006	-	33,33,59	1.18	4 (12%)	36,38,67	2.19	10 (27%)
3	PLD	A	2007[A]	-	36,36,59	1.54	5 (13%)	39,41,67	1.80	10 (25%)
3	PLD	A	2007[B]	-	36,36,59	8.42	7 (19%)	39,41,67	2.30	11 (28%)
4	UPL	A	2008	-	16,16,33	1.10	1 (6%)	16,16,33	1.80	2 (12%)
4	UPL	A	2009	-	14,14,33	0.75	0	14,14,33	1.06	1 (7%)
4	UPL	A	2011	-	18,18,33	0.62	0	17,17,33	0.79	0
4	UPL	A	2012	-	16,16,33	0.36	0	15,15,33	0.75	0
4	UPL	A	2013	-	15,15,33	0.54	0	14,14,33	0.74	0
4	UPL	A	2014	-	15,15,33	0.55	0	14,14,33	1.75	2 (14%)
4	UPL	A	2015	-	12,12,33	0.40	0	11,11,33	0.49	0
4	UPL	A	2017	-	10,10,33	0.47	0	9,9,33	0.56	0
4	UPL	A	2018	-	11,11,33	0.61	0	10,10,33	0.58	0
4	UPL	A	2019	-	9,9,33	0.39	0	8,8,33	0.76	0
4	UPL	A	2020	-	5,5,33	0.48	0	4,4,33	0.27	0
4	UPL	A	2022	-	5,5,33	0.44	0	4,4,33	0.23	0
4	UPL	A	2024	-	5,5,33	0.41	0	4,4,33	0.55	0
4	UPL	A	2025	-	7,7,33	0.62	0	6,6,33	0.21	0
4	UPL	A	2026	-	7,7,33	0.89	0	6,6,33	0.59	0

Mol	Type	Chain	Res	Link	Bond lengths			Bond angles		
					Counts	RMSZ	# Z > 2	Counts	RMSZ	# Z > 2
4	UPL	A	2029	-	8,8,33	0.48	0	7,7,33	0.71	0
4	UPL	A	2030	-	6,6,33	0.73	0	5,5,33	0.83	0
4	UPL	A	2032	-	5,5,33	0.43	0	4,4,33	0.46	0
4	UPL	A	2034	-	5,5,33	0.52	0	4,4,33	0.28	0
4	UPL	A	2035	-	6,6,33	0.46	0	5,5,33	0.12	0
4	UPL	A	2036	-	5,5,33	0.30	0	4,4,33	0.41	0
4	UPL	A	2037	-	4,4,33	0.51	0	3,3,33	0.77	0
4	UPL	A	2038	-	5,5,33	0.48	0	4,4,33	0.55	0
4	UPL	A	2039	-	4,4,33	0.51	0	3,3,33	0.31	0
4	UPL	A	2040	-	4,4,33	0.74	0	3,3,33	0.68	0
4	UPL	A	2041	-	4,4,33	0.38	0	3,3,33	0.51	0
4	UPL	A	2042	-	4,4,33	0.51	0	3,3,33	0.29	0
4	UPL	A	2047	-	4,4,33	0.29	0	3,3,33	0.39	0
4	UPL	A	2048	-	9,9,33	0.64	0	8,8,33	0.81	0
4	UPL	A	2050	-	5,5,33	0.32	0	4,4,33	0.46	0
3	PLD	B	2003	-	30,30,59	1.29	4 (13%)	31,35,67	2.38	16 (51%)
4	UPL	B	2010	-	13,13,33	0.55	0	13,13,33	0.83	0
4	UPL	B	2016	-	12,12,33	0.45	0	11,11,33	0.74	0
4	UPL	B	2021	-	8,8,33	0.20	0	7,7,33	0.51	0
4	UPL	B	2023	-	8,8,33	0.55	0	7,7,33	0.46	0
4	UPL	B	2027	-	6,6,33	0.37	0	5,5,33	0.53	0
4	UPL	B	2028	-	6,6,33	0.29	0	5,5,33	0.33	0
4	UPL	B	2031	-	6,6,33	0.41	0	5,5,33	0.61	0
4	UPL	B	2033	-	5,5,33	0.43	0	4,4,33	0.32	0
4	UPL	B	2043	-	4,4,33	0.23	0	3,3,33	0.41	0
4	UPL	B	2044	-	6,6,33	0.55	0	5,5,33	0.43	0
4	UPL	B	2045	-	4,4,33	0.35	0	3,3,33	0.60	0
4	UPL	B	2046	-	4,4,33	0.37	0	3,3,33	0.35	0
4	UPL	B	2049	-	5,5,33	0.32	0	4,4,33	0.47	0

In the following table, the Chirals column lists the number of chiral outliers, the number of chiral centers analysed, the number of these observed in the model and the number defined in the chemical component dictionary. Similar counts are reported in the Torsion and Rings columns. '-' means no outliers of that kind were identified.

Mol	Type	Chain	Res	Link	Chirals	Torsions	Rings
3	PLD	A	2001[A]	-	-	0/56/56/63	0/0/0/0
3	PLD	A	2001[B]	-	-	0/56/56/63	0/0/0/0
3	PLD	A	2002	-	-	0/36/36/63	0/0/0/0
3	PLD	A	2004	-	-	0/35/35/63	0/0/0/0
3	PLD	A	2005[A]	-	-	2/47/47/63	0/0/0/0
3	PLD	A	2005[B]	-	-	2/47/47/63	0/0/0/0

Continued on next page...

Continued from previous page...

Mol	Type	Chain	Res	Link	Chirals	Torsions	Rings
3	PLD	A	2006	-	1/1/4/5	2/35/35/63	0/0/0/0
3	PLD	A	2007[A]	-	-	0/38/38/63	0/0/0/0
3	PLD	A	2007[B]	-	-	0/38/38/63	0/0/0/0
4	UPL	A	2008	-	1/1/1/1	0/16/16/33	0/0/0/0
4	UPL	A	2009	-	1/1/1/1	0/14/14/33	0/0/0/0
4	UPL	A	2011	-	-	0/16/16/33	0/0/0/0
4	UPL	A	2012	-	-	0/14/14/33	0/0/0/0
4	UPL	A	2013	-	-	0/13/13/33	0/0/0/0
4	UPL	A	2014	-	-	0/13/13/33	0/0/0/0
4	UPL	A	2015	-	-	0/10/10/33	0/0/0/0
4	UPL	A	2017	-	-	0/8/8/33	0/0/0/0
4	UPL	A	2018	-	-	0/9/9/33	0/0/0/0
4	UPL	A	2019	-	-	0/7/7/33	0/0/0/0
4	UPL	A	2020	-	-	0/3/3/33	0/0/0/0
4	UPL	A	2022	-	-	0/3/3/33	0/0/0/0
4	UPL	A	2024	-	-	0/3/3/33	0/0/0/0
4	UPL	A	2025	-	-	0/5/5/33	0/0/0/0
4	UPL	A	2026	-	-	0/5/5/33	0/0/0/0
4	UPL	A	2029	-	-	0/6/6/33	0/0/0/0
4	UPL	A	2030	-	-	0/4/4/33	0/0/0/0
4	UPL	A	2032	-	-	0/3/3/33	0/0/0/0
4	UPL	A	2034	-	-	0/3/3/33	0/0/0/0
4	UPL	A	2035	-	-	0/4/4/33	0/0/0/0
4	UPL	A	2036	-	-	0/3/3/33	0/0/0/0
4	UPL	A	2037	-	-	0/2/2/33	0/0/0/0
4	UPL	A	2038	-	-	0/3/3/33	0/0/0/0
4	UPL	A	2039	-	-	0/2/2/33	0/0/0/0
4	UPL	A	2040	-	-	0/2/2/33	0/0/0/0
4	UPL	A	2041	-	-	0/2/2/33	0/0/0/0
4	UPL	A	2042	-	-	0/2/2/33	0/0/0/0
4	UPL	A	2047	-	-	0/2/2/33	0/0/0/0
4	UPL	A	2048	-	-	0/7/7/33	0/0/0/0
4	UPL	A	2050	-	-	0/3/3/33	0/0/0/0
3	PLD	B	2003	-	-	0/34/34/63	0/0/0/0
4	UPL	B	2010	-	-	0/12/12/33	0/0/0/0
4	UPL	B	2016	-	-	0/10/10/33	0/0/0/0
4	UPL	B	2021	-	-	0/6/6/33	0/0/0/0
4	UPL	B	2023	-	-	0/6/6/33	0/0/0/0
4	UPL	B	2027	-	-	0/4/4/33	0/0/0/0
4	UPL	B	2028	-	-	0/4/4/33	0/0/0/0
4	UPL	B	2031	-	-	0/4/4/33	0/0/0/0
4	UPL	B	2033	-	-	0/3/3/33	0/0/0/0

Continued on next page...

Continued from previous page...

Mol	Type	Chain	Res	Link	Chirals	Torsions	Rings
4	UPL	B	2043	-	-	0/2/2/33	0/0/0/0
4	UPL	B	2044	-	-	0/4/4/33	0/0/0/0
4	UPL	B	2045	-	-	0/2/2/33	0/0/0/0
4	UPL	B	2046	-	-	0/2/2/33	0/0/0/0
4	UPL	B	2049	-	-	0/3/3/33	0/0/0/0

All (51) bond length outliers are listed below:

Mol	Chain	Res	Type	Atoms	Z	Observed(Å)	Ideal(Å)
3	A	2004	PLD	P-O2P	-3.56	1.41	1.54
3	B	2003	PLD	C5-C4	-3.13	1.41	1.50
3	A	2001[A]	PLD	C5-N	-2.36	1.43	1.51
3	A	2001[B]	PLD	C5-N	-2.36	1.43	1.51
4	A	2008	UPL	C11-C12	-2.08	1.44	1.53
3	A	2001[A]	PLD	P-O1P	-2.00	1.43	1.51
3	A	2001[B]	PLD	P-O1P	-2.00	1.43	1.51
3	A	2004	PLD	C3-C2	2.04	1.56	1.50
3	A	2002	PLD	C1'-C'	2.09	1.56	1.50
3	A	2005[A]	PLD	P-O4P	2.11	1.62	1.54
3	A	2005[B]	PLD	P-O4P	2.11	1.62	1.54
3	A	2002	PLD	O3-C3	2.13	1.49	1.45
3	A	2001[A]	PLD	C1B-CB	2.14	1.57	1.50
3	A	2001[B]	PLD	C1B-CB	2.14	1.57	1.50
3	A	2006	PLD	C1B-CB	2.19	1.57	1.50
3	A	2002	PLD	P-O4P	2.20	1.62	1.54
3	A	2002	PLD	O2-C'	2.20	1.40	1.34
3	A	2001[A]	PLD	C1-C2	2.22	1.57	1.50
3	A	2001[B]	PLD	C1-C2	2.22	1.57	1.50
3	B	2003	PLD	C1B-CB	2.24	1.57	1.50
3	A	2007[B]	PLD	C1'-C'	2.29	1.57	1.50
3	A	2007[A]	PLD	C1'-C'	2.29	1.57	1.50
3	A	2006	PLD	O2-C'	2.30	1.41	1.34
3	B	2003	PLD	C1-C2	2.31	1.57	1.50
3	A	2006	PLD	P-O3P	2.35	1.68	1.60
3	A	2004	PLD	O2-C'	2.49	1.41	1.34
3	A	2005[A]	PLD	C3B-C2B	2.54	1.66	1.51
3	A	2005[B]	PLD	C3B-C2B	2.54	1.66	1.51
3	A	2005[A]	PLD	O3-CB	2.86	1.41	1.33
3	A	2005[B]	PLD	O3-CB	2.86	1.41	1.33
3	A	2007[B]	PLD	C1B-CB	2.93	1.59	1.50
3	A	2007[A]	PLD	C1B-CB	2.93	1.59	1.50
3	A	2007[B]	PLD	P-O3P	3.12	1.70	1.60

Continued on next page...

Continued from previous page...

Mol	Chain	Res	Type	Atoms	Z	Observed(Å)	Ideal(Å)
3	A	2007[A]	PLD	P-O3P	3.12	1.70	1.60
3	A	2001[A]	PLD	C2B-C1B	3.15	1.64	1.52
3	A	2001[B]	PLD	C2B-C1B	3.15	1.64	1.52
3	A	2006	PLD	P-O4P	3.41	1.67	1.54
3	B	2003	PLD	O2-C'	3.49	1.44	1.34
3	A	2007[B]	PLD	P-O4P	3.81	1.68	1.54
3	A	2007[A]	PLD	P-O4P	3.81	1.68	1.54
3	A	2005[A]	PLD	C1-C2	4.25	1.62	1.50
3	A	2005[B]	PLD	C1-C2	4.25	1.62	1.50
3	A	2002	PLD	C3-C2	4.27	1.62	1.50
3	A	2004	PLD	O3-CB	4.89	1.48	1.33
3	A	2007[B]	PLD	O3-CB	4.90	1.48	1.33
3	A	2007[A]	PLD	O3-CB	4.90	1.48	1.33
3	A	2002	PLD	O3-CB	5.29	1.49	1.33
3	A	2004	PLD	P-O4P	5.42	1.74	1.54
3	A	2007[B]	PLD	C6B-C5B	5.60	1.83	1.51
3	A	2007[B]	PLD	C9B-C8B	49.40	5.19	1.51
3	A	2001[B]	PLD	CG'-CF'	77.60	6.00	1.51

All (123) bond angle outliers are listed below:

Mol	Chain	Res	Type	Atoms	Z	Observed(°)	Ideal(°)
3	A	2001[B]	PLD	CG'-CF'-CE'	-14.78	38.20	114.53
3	A	2007[B]	PLD	C9B-C8B-C7B	-8.51	29.93	115.51
4	A	2008	UPL	C13-C12-C11	-5.20	94.75	111.94
3	A	2001[A]	PLD	C5'-C4'-C3'	-5.17	87.82	114.53
3	A	2001[B]	PLD	C5'-C4'-C3'	-5.17	87.82	114.53
4	A	2014	UPL	C13-C12-C11	-5.00	88.73	114.53
3	A	2001[A]	PLD	C6B-C5B-C4B	-4.90	89.25	114.53
3	A	2001[B]	PLD	C6B-C5B-C4B	-4.90	89.25	114.53
3	A	2006	PLD	C5'-C4'-C3'	-4.68	90.34	114.53
3	B	2003	PLD	C4-C5-N	-4.59	101.11	110.80
3	A	2005[A]	PLD	C2B-C1B-CB	-4.58	95.60	113.59
3	A	2005[B]	PLD	C2B-C1B-CB	-4.58	95.60	113.59
3	B	2003	PLD	O4P-P-O1P	-4.34	92.77	109.62
3	A	2007[B]	PLD	C5'-C4'-C3'	-4.16	93.03	114.53
3	A	2007[A]	PLD	C5'-C4'-C3'	-4.16	93.03	114.53
3	A	2001[B]	PLD	CH'-CG'-CF'	-3.90	76.24	115.51
3	A	2001[A]	PLD	C3-C2-C1	-3.84	103.09	112.07
3	A	2001[B]	PLD	C3-C2-C1	-3.84	103.09	112.07
3	B	2003	PLD	C3'-C2'-C1'	-3.78	99.43	113.29
3	B	2003	PLD	C3B-C2B-C1B	-3.55	100.26	113.29

Continued on next page...

Continued from previous page...

Mol	Chain	Res	Type	Atoms	Z	Observed(°)	Ideal(°)
3	A	2006	PLD	C3-C2-C1	-3.20	104.58	112.07
3	A	2007[B]	PLD	C4'-C3'-C2'	-3.09	98.56	114.53
3	A	2007[A]	PLD	C4'-C3'-C2'	-3.09	98.56	114.53
3	A	2006	PLD	C4'-C3'-C2'	-2.93	99.42	114.53
3	A	2004	PLD	C7B-C6B-C5B	-2.91	99.50	114.53
3	B	2003	PLD	C3-C2-C1	-2.88	105.33	112.07
3	A	2006	PLD	C3'-C2'-C1'	-2.80	103.01	113.29
3	B	2003	PLD	P-O4P-C4	-2.79	105.56	121.50
3	A	2004	PLD	O4P-P-O3P	-2.77	98.58	106.56
3	A	2005[A]	PLD	C2'-C1'-C'	-2.74	102.82	113.59
3	A	2005[B]	PLD	C2'-C1'-C'	-2.74	102.82	113.59
3	A	2004	PLD	C5B-C4B-C3B	-2.72	100.47	114.53
3	A	2001[A]	PLD	C7'-C6'-C5'	-2.67	100.75	114.53
3	A	2001[B]	PLD	C7'-C6'-C5'	-2.67	100.75	114.53
3	A	2002	PLD	OB-CB-C1B	-2.55	113.52	123.72
4	A	2014	UPL	C9-C8-C7	-2.44	101.94	114.53
3	A	2002	PLD	C6B-C5B-C4B	-2.42	102.05	114.53
4	A	2009	UPL	C9-C8-C7	-2.39	102.17	114.53
3	A	2004	PLD	O'-C'-C1'	-2.30	114.51	123.72
3	A	2001[A]	PLD	CAA-C9B-C8B	-2.30	102.64	114.53
3	A	2001[B]	PLD	CAA-C9B-C8B	-2.30	102.64	114.53
3	A	2005[B]	PLD	CB'-CA'-C9'	-2.30	102.66	114.53
3	B	2003	PLD	O2P-P-O1P	-2.29	100.11	112.53
3	B	2003	PLD	C5'-C4'-C3'	-2.28	95.50	113.44
3	A	2007[A]	PLD	C8B-C7B-C6B	-2.27	102.81	114.53
3	B	2003	PLD	C5B-C4B-C3B	-2.24	102.96	114.53
3	A	2004	PLD	OB-CB-C1B	-2.19	114.98	123.72
3	A	2005[A]	PLD	O4P-P-O1P	-2.16	103.62	110.58
3	A	2005[B]	PLD	O4P-P-O1P	-2.16	103.62	110.58
3	A	2004	PLD	CBA-CAA-C9B	-2.16	103.36	114.53
3	A	2006	PLD	C3-O3-CB	-2.11	110.96	116.85
3	A	2007[B]	PLD	C5B-C4B-C3B	-2.10	103.67	114.53
3	A	2007[A]	PLD	C5B-C4B-C3B	-2.10	103.67	114.53
3	A	2001[A]	PLD	C6'-C5'-C4'	-2.08	103.78	114.53
3	A	2001[B]	PLD	C6'-C5'-C4'	-2.08	103.78	114.53
3	A	2007[B]	PLD	C2'-C1'-C'	-2.03	105.61	113.59
3	A	2007[A]	PLD	C2'-C1'-C'	-2.03	105.61	113.59
3	A	2001[A]	PLD	O3-CB-C1B	2.01	118.01	111.90
3	A	2001[B]	PLD	O3-CB-C1B	2.01	118.01	111.90
3	A	2001[A]	PLD	C9B-C8B-C7B	2.06	125.16	114.53
3	A	2001[B]	PLD	C9B-C8B-C7B	2.06	125.16	114.53
3	A	2005[A]	PLD	O2-C2-C1	2.06	115.61	108.36

Continued on next page...

Continued from previous page...

Mol	Chain	Res	Type	Atoms	Z	Observed(°)	Ideal(°)
3	A	2005[B]	PLD	O2-C2-C1	2.06	115.61	108.36
3	A	2004	PLD	O2P-P-O1P	2.06	117.22	110.58
3	A	2001[A]	PLD	O2P-P-O4P	2.19	119.53	108.46
3	A	2001[B]	PLD	O2P-P-O4P	2.19	119.53	108.46
4	A	2008	UPL	C9-C10-C11	2.32	121.88	113.66
3	A	2007[B]	PLD	O2P-P-O1P	2.34	118.11	110.58
3	A	2007[A]	PLD	O2P-P-O1P	2.34	118.11	110.58
3	A	2005[A]	PLD	CB'-CA'-C9'	2.35	126.67	114.53
3	A	2004	PLD	O3P-P-O1P	2.43	113.34	107.14
3	B	2003	PLD	O2P-P-O4P	2.45	120.84	108.46
3	A	2004	PLD	C2B-C1B-CB	2.48	123.35	113.59
3	A	2007[B]	PLD	C2B-C1B-CB	2.50	123.41	113.59
3	A	2007[A]	PLD	C2B-C1B-CB	2.50	123.41	113.59
3	A	2005[A]	PLD	O3-C3-C2	2.53	115.51	108.69
3	A	2005[B]	PLD	O3-C3-C2	2.53	115.51	108.69
3	A	2005[A]	PLD	O3-CB-C1B	2.55	119.68	111.90
3	A	2005[B]	PLD	O3-CB-C1B	2.55	119.68	111.90
3	B	2003	PLD	C2-O2-C'	2.68	124.31	117.89
3	B	2003	PLD	O2P-P-O3P	2.75	122.33	108.46
3	B	2003	PLD	O2-C2-C1	2.81	118.26	108.36
3	A	2002	PLD	O3-CB-C1B	2.94	120.85	111.90
3	A	2004	PLD	O2-C2-C1	2.94	118.73	108.36
3	A	2007[B]	PLD	O3-C3-C2	2.96	116.65	108.69
3	A	2007[A]	PLD	O3-C3-C2	2.96	116.65	108.69
3	A	2002	PLD	O3-C3-C2	2.99	116.75	108.69
3	A	2005[A]	PLD	O2-C2-C3	3.00	118.94	108.36
3	A	2005[B]	PLD	O2-C2-C3	3.00	118.94	108.36
3	A	2006	PLD	O2-C2-C3	3.01	118.96	108.36
3	A	2001[A]	PLD	O2-C2-C1	3.13	119.39	108.36
3	A	2001[B]	PLD	O2-C2-C1	3.13	119.39	108.36
3	B	2003	PLD	O2-C2-C3	3.20	119.63	108.36
3	A	2006	PLD	O3-C3-C2	3.22	117.36	108.69
3	B	2003	PLD	O3-C3-C2	3.24	117.41	108.69
3	A	2007[B]	PLD	CAA-C9B-C8B	3.35	139.78	113.44
3	B	2003	PLD	O2-C'-C1'	3.44	119.00	111.53
3	A	2006	PLD	O2-C2-C1	3.45	120.52	108.36
3	A	2004	PLD	O3-C3-C2	3.54	118.22	108.69
3	A	2002	PLD	O2-C'-C1'	3.70	119.56	111.53
3	A	2004	PLD	O2P-P-O3P	3.81	117.53	106.56
3	A	2006	PLD	O2-C'-C1'	3.84	119.86	111.53
3	A	2007[B]	PLD	C2-O2-C'	3.86	127.15	117.89
3	A	2007[A]	PLD	C2-O2-C'	3.86	127.15	117.89

Continued on next page...

Continued from previous page...

Mol	Chain	Res	Type	Atoms	Z	Observed(°)	Ideal(°)
3	A	2004	PLD	O2-C2-C3	3.88	122.03	108.36
3	A	2007[B]	PLD	O2-C2-C3	3.95	122.27	108.36
3	A	2007[A]	PLD	O2-C2-C3	3.95	122.27	108.36
3	A	2001[A]	PLD	O2-C2-C3	4.21	123.20	108.36
3	A	2001[B]	PLD	O2-C2-C3	4.21	123.20	108.36
3	A	2002	PLD	O2-C2-C3	4.41	123.90	108.36
3	A	2001[A]	PLD	O3-C3-C2	4.90	121.88	108.69
3	A	2001[B]	PLD	O3-C3-C2	4.90	121.88	108.69
3	A	2002	PLD	C2-O2-C'	5.08	130.08	117.89
3	A	2005[A]	PLD	O2-C'-C1'	5.38	123.22	111.53
3	A	2005[B]	PLD	O2-C'-C1'	5.38	123.22	111.53
3	A	2005[A]	PLD	C3B-C2B-C1B	5.39	133.04	113.29
3	A	2005[B]	PLD	C3B-C2B-C1B	5.39	133.04	113.29
3	A	2004	PLD	O2-C'-C1'	5.45	123.38	111.53
3	A	2006	PLD	C2-O2-C'	7.13	134.99	117.89
3	A	2005[A]	PLD	C2-O2-C'	8.75	138.89	117.89
3	A	2005[B]	PLD	C2-O2-C'	8.75	138.89	117.89
3	A	2001[A]	PLD	C2-O2-C'	9.83	141.47	117.89
3	A	2001[B]	PLD	C2-O2-C'	9.83	141.47	117.89

All (3) chirality outliers are listed below:

Mol	Chain	Res	Type	Atom
4	A	2008	UPL	C12
3	A	2006	PLD	C2
4	A	2009	UPL	C12

All (6) torsion outliers are listed below:

Mol	Chain	Res	Type	Atoms
3	A	2005[A]	PLD	C2-O2-C'-O'
3	A	2005[B]	PLD	C2-O2-C'-O'
3	A	2005[A]	PLD	C2-O2-C'-C1'
3	A	2005[B]	PLD	C2-O2-C'-C1'
3	A	2006	PLD	C2-O2-C'-O'
3	A	2006	PLD	C2-O2-C'-C1'

There are no ring outliers.

41 monomers are involved in 112 short contacts:

Mol	Chain	Res	Type	Clashes	Symm-Clashes
3	A	2001[A]	PLD	4	0

Continued on next page...

Continued from previous page...

Mol	Chain	Res	Type	Clashes	Symm-Clashes
3	A	2002	PLD	16	0
3	A	2004	PLD	13	0
3	A	2005[B]	PLD	5	0
3	A	2006	PLD	9	0
3	A	2007[B]	PLD	10	0
4	A	2008	UPL	3	0
4	A	2009	UPL	7	0
4	A	2011	UPL	4	0
4	A	2012	UPL	3	0
4	A	2013	UPL	7	0
4	A	2014	UPL	2	0
4	A	2015	UPL	4	0
4	A	2017	UPL	1	0
4	A	2018	UPL	2	0
4	A	2019	UPL	1	0
4	A	2022	UPL	2	0
4	A	2024	UPL	1	0
4	A	2025	UPL	1	0
4	A	2026	UPL	3	0
4	A	2029	UPL	1	0
4	A	2030	UPL	1	0
4	A	2034	UPL	1	0
4	A	2036	UPL	1	0
4	A	2038	UPL	2	0
4	A	2042	UPL	1	0
4	A	2047	UPL	1	0
4	A	2048	UPL	2	0
4	A	2050	UPL	1	0
3	B	2003	PLD	8	0
4	B	2010	UPL	6	0
4	B	2016	UPL	2	0
4	B	2021	UPL	4	0
4	B	2023	UPL	2	0
4	B	2027	UPL	2	0
4	B	2028	UPL	1	0
4	B	2033	UPL	1	0
4	B	2044	UPL	1	0
4	B	2045	UPL	1	0
4	B	2046	UPL	2	0
4	B	2049	UPL	3	0

5.7 Other polymers

There are no such residues in this entry.

5.8 Polymer linkage issues

There are no chain breaks in this entry.

6 Fit of model and data

6.1 Protein, DNA and RNA chains

In the following table, the column labelled ‘#RSRZ> 2’ contains the number (and percentage) of RSRZ outliers, followed by percent RSRZ outliers for the chain as percentile scores relative to all X-ray entries and entries of similar resolution. The OWAB column contains the minimum, median, 95th percentile and maximum values of the occupancy-weighted average B-factor per residue. The column labelled ‘Q< 0.9’ lists the number of (and percentage) of residues with an average occupancy less than 0.9.

Mol	Chain	Analysed	<RSRZ>	#RSRZ>2	OWAB(Å ²)	Q<0.9
1	A	954/1056 (90%)	0.24	72 (7%) 17 19	19, 35, 77, 100	3 (0%)
2	B	174/319 (54%)	1.27	50 (28%) 1 0	36, 67, 96, 100	1 (0%)
All	All	1128/1375 (82%)	0.40	122 (10%) 8 8	19, 39, 86, 100	4 (0%)

All (122) RSRZ outliers are listed below:

Mol	Chain	Res	Type	RSRZ
1	A	503	LEU	8.8
1	A	266	ALA	7.6
2	B	1460	SER	7.3
1	A	447	VAL	6.9
2	B	1357	LYS	6.8
2	B	1370	ASP	6.7
1	A	1072	ALA	6.7
1	A	166	TYR	6.6
2	B	1415	ALA	6.0
2	B	1388	GLY	5.8
1	A	267	ALA	5.6
2	B	1387	ASN	5.6
2	B	1417	MET	5.4
1	A	265	PRO	5.2
1	A	949	MET	5.1
1	A	500	GLY	5.1
2	B	1356	SER	5.1
1	A	757	LYS	5.0
1	A	687	LEU	5.0
1	A	779	GLU	5.0
2	B	1427[A]	LYS	5.0
1	A	780	GLN	4.9
1	A	222	PRO	4.9
2	B	1384	LEU	4.8

Continued on next page...

Continued from previous page...

Mol	Chain	Res	Type	RSRZ
1	A	688	TYR	4.8
1	A	838	SER	4.7
1	A	783	ALA	4.7
1	A	950	THR	4.7
1	A	268	SER	4.7
1	A	140	LYS	4.7
1	A	759	MET	4.7
1	A	996	LYS	4.7
2	B	1416	HIS	4.6
2	B	1389	LEU	4.6
1	A	1057	THR	4.4
2	B	1385	THR	4.4
2	B	1386	SER	4.4
2	B	1358	PRO	4.3
1	A	448	SER	4.3
1	A	686	LEU	4.3
1	A	1070	LEU	4.2
1	A	758[A]	LYS	4.1
1	A	728	ASP	4.1
1	A	502	SER	4.0
1	A	504	ASP	3.9
2	B	1457[A]	ARG	3.9
1	A	778	GLN	3.7
1	A	165	GLY	3.7
2	B	1477	ILE	3.7
1	A	323[A]	GLU	3.7
1	A	1058	SER	3.7
2	B	1481	LEU	3.7
1	A	1071	GLN	3.6
2	B	1491	GLN	3.6
1	A	264	ALA	3.6
1	A	733	PRO	3.5
2	B	1429	CYS	3.5
2	B	1464	ARG	3.5
1	A	756	ASP	3.4
1	A	781	ILE	3.4
2	B	1401	ASP	3.4
1	A	141	ASN	3.4
1	A	653	PRO	3.2
2	B	1441	GLY	3.2
2	B	1487	PRO	3.2
1	A	167	ARG	3.1

Continued on next page...

Continued from previous page...

Mol	Chain	Res	Type	RSRZ
2	B	1473	GLY	3.1
2	B	1490	ASN	3.1
1	A	907	SER	3.1
2	B	1488	LYS	3.1
2	B	1443	LEU	3.0
1	A	621	CYS	3.0
1	A	1014	CYS	3.0
1	A	1059	SER	2.9
2	B	1480	LYS	2.9
1	A	168	THR	2.9
1	A	446	THR	2.9
2	B	1510	ILE	2.8
2	B	1470[A]	LEU	2.8
1	A	59	HIS	2.8
1	A	349	HIS	2.8
2	B	1482	GLU	2.8
2	B	1369	ALA	2.7
2	B	1462	LEU	2.7
1	A	947	PRO	2.7
2	B	1444	GLN	2.6
2	B	1459	PRO	2.6
1	A	1015	SER	2.6
1	A	169	ASN	2.5
1	A	480	LEU	2.5
1	A	651	SER	2.5
2	B	1463	GLN	2.4
2	B	1489	ALA	2.4
2	B	1400	SER	2.4
2	B	1442	ASN	2.4
2	B	1468	ALA	2.4
1	A	730[A]	LYS	2.4
1	A	948	LYS	2.4
2	B	1492	LYS	2.4
1	A	344[A]	LEU	2.3
1	A	737	PRO	2.3
1	A	685	GLU	2.3
1	A	332	LEU	2.3
2	B	1404	VAL	2.3
1	A	735	GLU	2.3
2	B	1479	SER	2.2
2	B	1493	HIS	2.2
2	B	1498	ILE	2.2

Continued on next page...

Continued from previous page...

Mol	Chain	Res	Type	RSRZ
1	A	1016[A]	LYS	2.2
1	A	1073	GLY	2.1
1	A	618	ARG	2.1
1	A	377	LEU	2.1
1	A	841	LEU	2.1
1	A	995	GLN	2.1
1	A	301	ASN	2.0
2	B	1467	ASN	2.0
1	A	364	ALA	2.0
2	B	1445	SER	2.0
2	B	1399	LEU	2.0
1	A	854	ASN	2.0
2	B	1461	SER	2.0
1	A	342	GLY	2.0

6.2 Non-standard residues in protein, DNA, RNA chains [i](#)

In the following table, the Atoms column lists the number of modelled atoms in the group and the number defined in the chemical component dictionary. LLDF column lists the quality of electron density of the group with respect to its neighbouring residues in protein, DNA or RNA chains. The B-factors column lists the minimum, median, 95th percentile and maximum values of B factors of atoms in the group. The column labelled 'Q< 0.9' lists the number of atoms with occupancy less than 0.9.

Mol	Type	Chain	Res	Atoms	RSCC	RSR	LLDF	B-factors(Å ²)	Q<0.9
1	PCA	A	17	8/9	0.97	0.08	-	35,44,51,58	0

6.3 Carbohydrates [i](#)

There are no carbohydrates in this entry.

6.4 Ligands [i](#)

In the following table, the Atoms column lists the number of modelled atoms in the group and the number defined in the chemical component dictionary. LLDF column lists the quality of electron density of the group with respect to its neighbouring residues in protein, DNA or RNA chains. The B-factors column lists the minimum, median, 95th percentile and maximum values of B factors of atoms in the group. The column labelled 'Q< 0.9' lists the number of atoms with occupancy less than 0.9.

Mol	Type	Chain	Res	Atoms	RSCC	RSR	LLDF	B-factors(\AA^2)	Q<0.9
4	UPL	A	2008	17/34	0.62	0.28	15.22	86,91,100,100	0
4	UPL	A	2019	10/34	0.75	0.23	14.61	66,75,81,86	0
4	UPL	A	2012	17/34	0.55	0.22	12.85	68,77,89,90	0
4	UPL	A	2024	6/34	0.70	0.42	9.86	75,89,95,95	0
3	PLD	A	2006	34/60	0.45	0.33	9.28	62,88,99,100	0
3	PLD	A	2005[B]	46/60	0.75	0.24	6.76	31,85,99,100	7
3	PLD	A	2005[A]	46/60	0.75	0.24	6.76	31,85,99,100	7
4	UPL	A	2014	16/34	0.93	0.28	5.02	36,46,57,60	0
4	UPL	A	2009	15/34	0.74	0.18	4.80	55,68,78,85	0
4	UPL	A	2030	7/34	0.69	0.20	4.69	37,58,72,73	0
3	PLD	A	2002	35/60	0.77	0.20	3.43	49,79,90,94	0
4	UPL	A	2011	19/34	0.84	0.13	3.40	41,68,85,87	0
3	PLD	A	2007[A]	37/60	0.75	0.17	3.32	51,92,100,100	3
3	PLD	A	2007[B]	37/60	0.75	0.17	3.32	51,92,100,100	3
4	UPL	A	2013	16/34	0.85	0.14	2.71	75,85,90,91	0
3	PLD	A	2001[B]	53/60	0.94	0.18	2.41	24,43,74,83	4
3	PLD	A	2001[A]	53/60	0.94	0.18	2.41	27,44,74,83	4
4	UPL	A	2025	8/34	0.77	0.14	2.08	73,77,79,84	0
4	UPL	A	2037	5/34	0.83	0.14	1.16	52,60,62,69	0
4	UPL	B	2021	9/34	0.79	0.17	0.94	63,75,79,82	0
3	PLD	B	2003	31/60	0.82	0.17	0.87	63,84,90,93	2
3	PLD	A	2004	34/60	0.93	0.12	0.45	53,69,86,87	0
4	UPL	B	2010	14/34	0.86	0.14	0.16	62,78,81,85	0
4	UPL	A	2017	11/34	0.89	0.12	-0.06	44,67,94,97	0
4	UPL	A	2015	13/34	0.81	0.15	-0.07	75,80,89,92	0
4	UPL	A	2035	7/34	0.79	0.15	-	55,78,94,95	0
4	UPL	B	2049	6/34	0.92	0.12	-	90,92,100,100	0
4	UPL	B	2046	5/34	0.88	0.14	-	75,80,82,84	0
4	UPL	A	2048	10/34	0.60	0.28	-	77,82,87,89	0
4	UPL	B	2043	5/34	0.93	0.20	-	78,81,82,84	0
4	UPL	B	2016	13/34	0.36	0.35	-	71,86,91,95	0
4	UPL	B	2044	7/34	0.65	0.21	-	75,81,82,82	0
4	UPL	A	2041	5/34	0.73	0.29	-	87,90,95,96	0
4	UPL	A	2032	6/34	0.85	0.26	-	77,82,88,91	0
4	UPL	A	2022	6/34	0.87	0.12	-	87,88,94,94	0
4	UPL	B	2027	7/34	0.68	0.21	-	81,85,89,90	0
4	UPL	B	2045	5/34	0.90	0.32	-	73,78,84,85	0
4	UPL	A	2018	12/34	0.68	0.14	-	60,73,81,82	0
4	UPL	A	2039	5/34	0.82	0.15	-	58,62,73,78	0
4	UPL	B	2028	7/34	0.76	0.30	-	87,92,93,93	0
4	UPL	A	2038	6/34	0.59	0.19	-	81,85,87,92	0
4	UPL	A	2050	6/34	0.67	0.48	-	88,89,91,91	0

Continued on next page...

Continued from previous page...

Mol	Type	Chain	Res	Atoms	RSCC	RSR	LLDF	B-factors(\AA^2)	Q<0.9
4	UPL	B	2033	6/34	0.83	0.16	-	78,83,87,89	0
4	UPL	A	2036	6/34	0.83	0.15	-	87,89,90,91	0
4	UPL	A	2042	5/34	0.82	0.34	-	68,81,83,84	0
4	UPL	A	2034	6/34	0.90	0.09	-	59,62,65,65	0
4	UPL	A	2047	5/34	0.79	0.40	-	84,90,94,95	0
4	UPL	B	2031	7/34	0.67	0.21	-	81,82,85,85	0
4	UPL	B	2023	9/34	0.84	0.18	-	52,68,71,72	0
4	UPL	A	2020	6/34	0.74	0.30	-	70,77,80,82	0
4	UPL	A	2026	8/34	0.77	0.27	-	43,71,84,85	0
4	UPL	A	2029	9/34	0.44	0.27	-	89,91,96,97	0
4	UPL	A	2040	5/34	0.70	0.21	-	56,58,71,71	0

6.5 Other polymers [i](#)

There are no such residues in this entry.