



Full wwPDB X-ray Structure Validation Report ⓘ

Feb 1, 2016 – 06:29 PM GMT

PDB ID : 4LSA
Title : Crystal structure of BRI1 sud1 (Gly643Glu) bound to brassinolide
Authors : Santiago, J.; Henzler, C.; Hothorn, M.
Deposited on : 2013-07-22
Resolution : 2.50 Å(reported)

This is a Full wwPDB X-ray Structure Validation Report for a publicly released PDB entry.
We welcome your comments at validation@mail.wwpdb.org
A user guide is available at
<http://wwpdb.org/validation/2016/XrayValidationReportHelp>
with specific help available everywhere you see the ⓘ symbol.

The following versions of software and data (see [references ⓘ](#)) were used in the production of this report:

MolProbity : 4.02b-467
Mogul : 1.7 (RC4), CSD as536be (2015)
Xtriage (Phenix) : 1.9-1692
EDS : rb-20026688
Percentile statistics : 20151230.v01 (using entries in the PDB archive December 30th 2015)
Refmac : 5.8.0135
CCP4 : 6.5.0
Ideal geometry (proteins) : Engh & Huber (2001)
Ideal geometry (DNA, RNA) : Parkinson et al. (1996)
Validation Pipeline (wwPDB-VP) : trunk26865

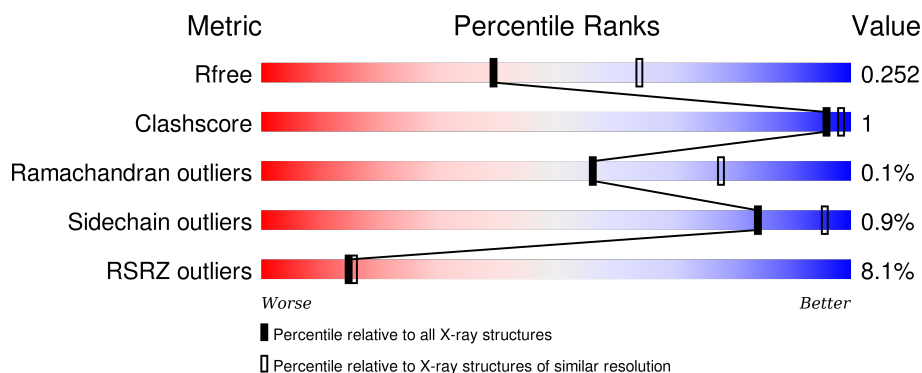
1 Overall quality at a glance

The following experimental techniques were used to determine the structure:

X-RAY DIFFRACTION

The reported resolution of this entry is 2.50 Å.

Percentile scores (ranging between 0-100) for global validation metrics of the entry are shown in the following graphic. The table shows the number of entries on which the scores are based.



Metric	Whole archive (#Entries)	Similar resolution (#Entries, resolution range(Å))
R_{free}	91344	3553 (2.50-2.50)
Clashscore	102246	4242 (2.50-2.50)
Ramachandran outliers	100387	4156 (2.50-2.50)
Sidechain outliers	100360	4158 (2.50-2.50)
RSRZ outliers	91569	3562 (2.50-2.50)

The table below summarises the geometric issues observed across the polymeric chains and their fit to the electron density. The red, orange, yellow and green segments on the lower bar indicate the fraction of residues that contain outliers for ≥ 3 , 2, 1 and 0 types of geometric quality criteria. A grey segment represents the fraction of residues that are not modelled. The numeric value for each fraction is indicated below the corresponding segment, with a dot representing fractions $\leq 5\%$. The upper red bar (where present) indicates the fraction of residues that have poor fit to the electron density. The numeric value is given above the bar.

Mol	Chain	Length	Quality of chain
1	A	774	

The following table lists non-polymeric compounds, carbohydrate monomers and non-standard residues in protein, DNA, RNA chains that are outliers for geometric or electron-density-fit criteria:

Mol	Type	Chain	Res	Chirality	Geometry	Clashes	Electron density
2	NAG	A	816	-	-	-	X

2 Entry composition

There are 5 unique types of molecules in this entry. The entry contains 11337 atoms, of which 5478 are hydrogens and 0 are deuteriums.

In the tables below, the ZeroOcc column contains the number of atoms modelled with zero occupancy, the AltConf column contains the number of residues with at least one atom in alternate conformation and the Trace column contains the number of residues modelled with at most 2 atoms.

- Molecule 1 is a protein called Protein BRASSINOSTEROID INSENSITIVE 1.

Mol	Chain	Residues	Atoms						ZeroOcc	AltConf	Trace
1	A	743	Total	C	H	N	O	S	0	5	0
			11048	3518	5478	915	1106	31			

There are 15 discrepancies between the modelled and reference sequences:

Chain	Residue	Modelled	Actual	Comment	Reference
A	24	GLY	-	EXPRESSION TAG	UNP O22476
A	25	SER	-	EXPRESSION TAG	UNP O22476
A	26	SER	-	EXPRESSION TAG	UNP O22476
A	27	MET	-	EXPRESSION TAG	UNP O22476
A	28	GLY	-	EXPRESSION TAG	UNP O22476
A	643	GLU	GLY	ENGINEERED MUTATION	UNP O22476
A	789	LEU	-	EXPRESSION TAG	UNP O22476
A	790	GLU	-	EXPRESSION TAG	UNP O22476
A	791	ASN	-	EXPRESSION TAG	UNP O22476
A	792	LEU	-	EXPRESSION TAG	UNP O22476
A	793	TYR	-	EXPRESSION TAG	UNP O22476
A	794	PHE	-	EXPRESSION TAG	UNP O22476
A	795	GLN	-	EXPRESSION TAG	UNP O22476
A	796	GLY	-	EXPRESSION TAG	UNP O22476
A	797	ALA	-	EXPRESSION TAG	UNP O22476

- Molecule 2 is SUGAR (N-ACETYL-D-GLUCOSAMINE) (three-letter code: NAG) (formula: $C_8H_{15}NO_6$).

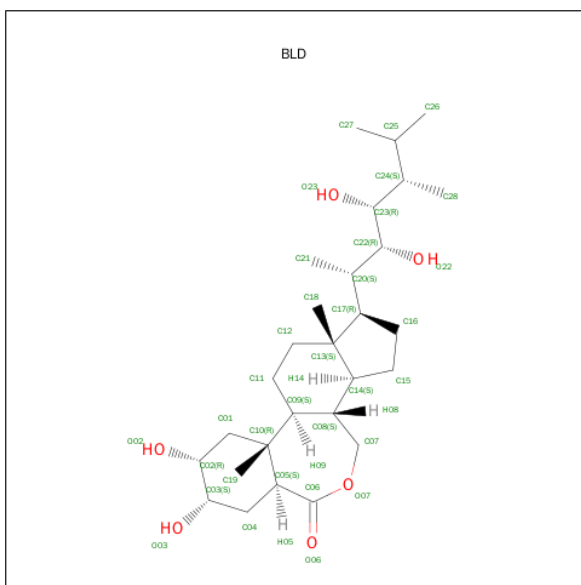


Mol	Chain	Residues	Atoms				ZeroOcc	AltConf
2	A	1	Total	C	N	O	0	0
			14	8	1	5		
2	A	1	Total	C	N	O	0	0
			14	8	1	5		
2	A	1	Total	C	N	O	0	0
			14	8	1	5		
2	A	1	Total	C	N	O	0	0
			14	8	1	5		

- Molecule 3 is a polymer of unknown type called SUGAR (4-MER).

Mol	Chain	Residues	Atoms				ZeroOcc	AltConf
3	A	4	Total	C	N	O	0	0
			50	28	2	20		
3	A	4	Total	C	N	O	0	0
			50	28	2	20		
3	A	4	Total	C	N	O	0	0
			50	28	2	20		

- Molecule 4 is BRASSINOLIDE (three-letter code: BLD) (formula: C₂₈H₄₈O₆).



Mol	Chain	Residues	Atoms			ZeroOcc	AltConf
4	A	1	Total	C	O	0	0
			34	28	6		

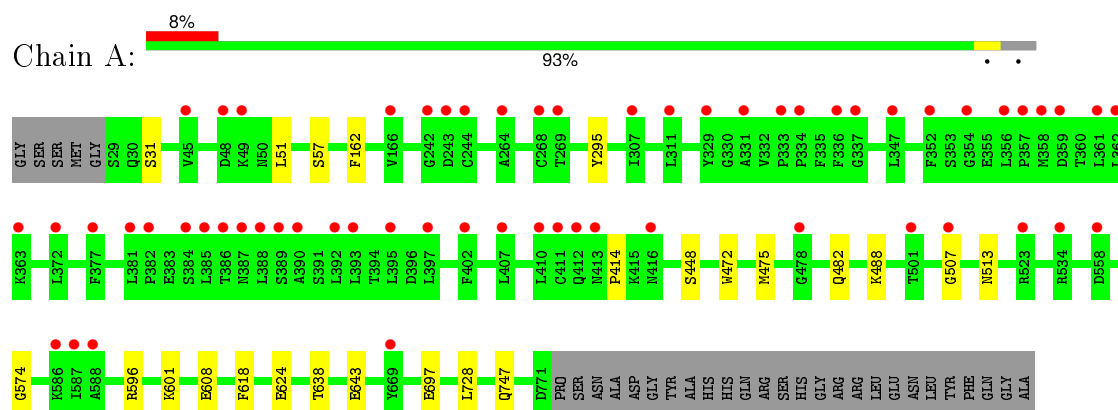
- Molecule 5 is water.

Mol	Chain	Residues	Atoms	ZeroOcc	AltConf
5	A	49	Total O 49 49	0	0

3 Residue-property plots

These plots are drawn for all protein, RNA and DNA chains in the entry. The first graphic for a chain summarises the proportions of errors displayed in the second graphic. The second graphic shows the sequence view annotated by issues in geometry and electron density. Residues are color-coded according to the number of geometric quality criteria for which they contain at least one outlier: green = 0, yellow = 1, orange = 2 and red = 3 or more. A red dot above a residue indicates a poor fit to the electron density ($RSRZ > 2$). Stretches of 2 or more consecutive residues without any outlier are shown as a green connector. Residues present in the sample, but not in the model, are shown in grey.

- Molecule 1: Protein BRASSINOSTEROID INSENSITIVE 1



4 Data and refinement statistics

Property	Value	Source
Space group	C 1 2 1	Depositor
Cell constants a, b, c, α , β , γ	174.03Å 67.30Å 120.90Å 90.00° 121.09° 90.00°	Depositor
Resolution (Å)	49.56 – 2.50 49.55 – 2.50	Depositor EDS
% Data completeness (in resolution range)	99.3 (49.56-2.50) 99.4 (49.55-2.50)	Depositor EDS
R_{merge}	0.06	Depositor
R_{sym}	0.05	Depositor
$\langle I/\sigma(I) \rangle$ ¹	2.03 (at 2.51Å)	Xtriage
Refinement program	PHENIX (phenix.refine: dev_1334)	Depositor
R, R_{free}	0.205 , 0.251 0.215 , 0.252	Depositor DCC
R_{free} test set	2086 reflections (5.29%)	DCC
Wilson B-factor (Å ²)	58.6	Xtriage
Anisotropy	0.306	Xtriage
Bulk solvent k_{sol} (e/Å ³), B_{sol} (Å ²)	0.37 , 49.2	EDS
Estimated twinning fraction	No twinning to report.	Xtriage
L-test for twinning ²	$\langle L \rangle = 0.50$, $\langle L^2 \rangle = 0.33$	Xtriage
Outliers	1 of 41551 reflections (0.002%)	Xtriage
F_o, F_c correlation	0.94	EDS
Total number of atoms	11337	wwPDB-VP
Average B, all atoms (Å ²)	83.0	wwPDB-VP

Xtriage's analysis on translational NCS is as follows: *The largest off-origin peak in the Patterson function is 4.68% of the height of the origin peak. No significant pseudotranslation is detected.*

¹Intensities estimated from amplitudes.

²Theoretical values of $\langle |L| \rangle$, $\langle L^2 \rangle$ for acentric reflections are 0.5, 0.375 respectively for untwinned datasets, and 0.333, 0.2 for perfectly twinned datasets.

5 Model quality [i](#)

5.1 Standard geometry [i](#)

Bond lengths and bond angles in the following residue types are not validated in this section: BLD, BMA, NAG, MAN

The Z score for a bond length (or angle) is the number of standard deviations the observed value is removed from the expected value. A bond length (or angle) with $|Z| > 5$ is considered an outlier worth inspection. RMSZ is the root-mean-square of all Z scores of the bond lengths (or angles).

Mol	Chain	Bond lengths		Bond angles	
		RMSZ	$\# Z > 5$	RMSZ	$\# Z > 5$
1	A	0.22	0/5691	0.40	1/7738 (0.0%)

There are no bond length outliers.

All (1) bond angle outliers are listed below:

Mol	Chain	Res	Type	Atoms	Z	Observed($^{\circ}$)	Ideal($^{\circ}$)
1	A	414	PRO	N-CA-CB	5.82	110.29	103.30

There are no chirality outliers.

There are no planarity outliers.

5.2 Too-close contacts [i](#)

In the following table, the Non-H and H(model) columns list the number of non-hydrogen atoms and hydrogen atoms in the chain respectively. The H(added) column lists the number of hydrogen atoms added and optimized by MolProbity. The Clashes column lists the number of clashes within the asymmetric unit, whereas Symm-Clashes lists symmetry related clashes.

Mol	Chain	Non-H	H(model)	H(added)	Clashes	Symm-Clashes
1	A	5570	5478	5436	12	0
2	A	56	0	52	1	0
3	A	150	0	129	6	0
4	A	34	0	47	1	0
5	A	49	0	0	0	0
All	All	5859	5478	5664	17	0

The all-atom clashscore is defined as the number of clashes found per 1000 atoms (including hydrogen atoms). The all-atom clashscore for this structure is 1.

All (17) close contacts within the same asymmetric unit are listed below, sorted by their clash magnitude.

Atom-1	Atom-2	Interatomic distance (Å)	Clash overlap (Å)
3:A:803:NAG:H83	3:A:803:NAG:H3	1.52	0.91
1:A:574:GLY:HA2	2:A:816:NAG:H82	1.72	0.71
1:A:596:ARG:NH2	1:A:643:GLU:OE1	2.26	0.68
1:A:295:TYR:CZ	3:A:807:NAG:H82	2.29	0.67
4:A:817:BLD:H112	4:A:817:BLD:H221	1.78	0.64
1:A:295:TYR:CE2	3:A:807:NAG:H82	2.34	0.63
3:A:803:NAG:C8	3:A:803:NAG:H3	2.27	0.60
1:A:596:ARG:NH1	1:A:618:PHE:O	2.40	0.54
3:A:803:NAG:H82	3:A:803:NAG:C1	2.40	0.52
1:A:488:LYS:O	1:A:513:ASN:ND2	2.44	0.50
1:A:608:GLU:OE1	1:A:608:GLU:N	2.44	0.50
1:A:728:LEU:O	1:A:747:GLN:NE2	2.48	0.47
1:A:697:GLU:N	1:A:697:GLU:OE1	2.48	0.47
1:A:448:SER:HG	1:A:472:TRP:HD1	1.67	0.43
3:A:803:NAG:C8	3:A:803:NAG:C1	2.98	0.41
1:A:482:GLN:OE1	1:A:507:GLY:N	2.54	0.40

There are no symmetry-related clashes.

5.3 Torsion angles [i](#)

5.3.1 Protein backbone [i](#)

In the following table, the Percentiles column shows the percent Ramachandran outliers of the chain as a percentile score with respect to all X-ray entries followed by that with respect to entries of similar resolution.

The Analysed column shows the number of residues for which the backbone conformation was analysed, and the total number of residues.

Mol	Chain	Analysed	Favoured	Allowed	Outliers	Percentiles	
1	A	746/774 (96%)	719 (96%)	26 (4%)	1 (0%)	56	78

All (1) Ramachandran outliers are listed below:

Mol	Chain	Res	Type
1	A	638	THR

5.3.2 Protein sidechains [i](#)

In the following table, the Percentiles column shows the percent sidechain outliers of the chain as a percentile score with respect to all X-ray entries followed by that with respect to entries of similar resolution.

The Analysed column shows the number of residues for which the sidechain conformation was analysed, and the total number of residues.

Mol	Chain	Analysed	Rotameric	Outliers	Percentiles
1	A	637/680 (94%)	631 (99%)	6 (1%)	84 95

All (6) residues with a non-rotameric sidechain are listed below:

Mol	Chain	Res	Type
1	A	31	SER
1	A	51	LEU
1	A	57	SER
1	A	162	PHE
1	A	475	MET
1	A	601	LYS

Some sidechains can be flipped to improve hydrogen bonding and reduce clashes. All (2) such sidechains are listed below:

Mol	Chain	Res	Type
1	A	204	HIS
1	A	688	ASN

5.3.3 RNA [i](#)

There are no RNA molecules in this entry.

5.4 Non-standard residues in protein, DNA, RNA chains [i](#)

There are no non-standard protein/DNA/RNA residues in this entry.

5.5 Carbohydrates [i](#)

12 carbohydrates are modelled in this entry.

In the following table, the Counts columns list the number of bonds (or angles) for which Mogul statistics could be retrieved, the number of bonds (or angles) that are observed in the model and

the number of bonds (or angles) that are defined in the chemical component dictionary. The Link column lists molecule types, if any, to which the group is linked. The Z score for a bond length (or angle) is the number of standard deviations the observed value is removed from the expected value. A bond length (or angle) with $|Z| > 2$ is considered an outlier worth inspection. RMSZ is the root-mean-square of all Z scores of the bond lengths (or angles).

Mol	Type	Chain	Res	Link	Bond lengths			Bond angles		
					Counts	RMSZ	# Z > 2	Counts	RMSZ	# Z > 2
3	NAG	A	802	1,3	14,14,15	0.34	0	15,19,21	0.26	0
3	NAG	A	803	3	14,14,15	0.29	0	15,19,21	0.39	0
3	BMA	A	804	3	11,11,12	0.73	0	14,15,17	1.03	1 (7%)
3	MAN	A	805	3	11,11,12	0.74	0	14,15,17	1.04	2 (14%)
3	NAG	A	807	1,3	14,14,15	0.29	0	15,19,21	0.35	0
3	NAG	A	808	3	14,14,15	0.43	0	15,19,21	0.24	0
3	BMA	A	809	3	11,11,12	0.64	0	14,15,17	0.77	0
3	MAN	A	810	3	11,11,12	0.64	0	14,15,17	1.11	2 (14%)
3	NAG	A	812	1,3	14,14,15	0.33	0	15,19,21	0.31	0
3	NAG	A	813	3	14,14,15	0.28	0	15,19,21	0.22	0
3	BMA	A	814	3	11,11,12	0.95	1 (9%)	14,15,17	1.41	2 (14%)
3	MAN	A	815	3	11,11,12	0.81	1 (9%)	14,15,17	1.00	1 (7%)

In the following table, the Chirals column lists the number of chiral outliers, the number of chiral centers analysed, the number of these observed in the model and the number defined in the chemical component dictionary. Similar counts are reported in the Torsion and Rings columns. '-' means no outliers of that kind were identified.

Mol	Type	Chain	Res	Link	Chirals	Torsions	Rings
3	NAG	A	802	1,3	-	0/6/23/26	0/1/1/1
3	NAG	A	803	3	-	0/6/23/26	0/1/1/1
3	BMA	A	804	3	-	0/2/19/22	0/1/1/1
3	MAN	A	805	3	-	0/2/19/22	0/1/1/1
3	NAG	A	807	1,3	-	0/6/23/26	0/1/1/1
3	NAG	A	808	3	-	0/6/23/26	0/1/1/1
3	BMA	A	809	3	-	0/2/19/22	0/1/1/1
3	MAN	A	810	3	-	0/2/19/22	0/1/1/1
3	NAG	A	812	1,3	-	0/6/23/26	0/1/1/1
3	NAG	A	813	3	-	0/6/23/26	0/1/1/1
3	BMA	A	814	3	-	0/2/19/22	0/1/1/1
3	MAN	A	815	3	-	0/2/19/22	0/1/1/1

All (2) bond length outliers are listed below:

Mol	Chain	Res	Type	Atoms	Z	Observed(Å)	Ideal(Å)
3	A	815	MAN	O5-C1	-2.22	1.40	1.43

Continued on next page...

Continued from previous page...

Mol	Chain	Res	Type	Atoms	Z	Observed(Å)	Ideal(Å)
3	A	814	BMA	C2-C3	2.03	1.55	1.52

All (8) bond angle outliers are listed below:

Mol	Chain	Res	Type	Atoms	Z	Observed(°)	Ideal(°)
3	A	815	MAN	O2-C2-C3	-2.29	105.50	110.12
3	A	805	MAN	O2-C2-C3	-2.18	105.72	110.12
3	A	810	MAN	O2-C2-C3	-2.17	105.76	110.12
3	A	804	BMA	C1-C2-C3	2.23	112.17	109.54
3	A	814	BMA	O5-C1-C2	2.24	114.48	110.86
3	A	805	MAN	C1-O5-C5	2.40	115.29	112.25
3	A	810	MAN	C1-O5-C5	2.74	115.72	112.25
3	A	814	BMA	C1-C2-C3	3.63	113.84	109.54

There are no chirality outliers.

There are no torsion outliers.

There are no ring outliers.

2 monomers are involved in 6 short contacts:

Mol	Chain	Res	Type	Clashes	Symm-Clashes
3	A	803	NAG	4	0
3	A	807	NAG	2	0

5.6 Ligand geometry [i](#)

5 ligands are modelled in this entry.

In the following table, the Counts columns list the number of bonds (or angles) for which Mogul statistics could be retrieved, the number of bonds (or angles) that are observed in the model and the number of bonds (or angles) that are defined in the chemical component dictionary. The Link column lists molecule types, if any, to which the group is linked. The Z score for a bond length (or angle) is the number of standard deviations the observed value is removed from the expected value. A bond length (or angle) with $|Z| > 2$ is considered an outlier worth inspection. RMSZ is the root-mean-square of all Z scores of the bond lengths (or angles).

Mol	Type	Chain	Res	Link	Bond lengths			Bond angles		
					Counts	RMSZ	$\# Z > 2$	Counts	RMSZ	$\# Z > 2$
2	NAG	A	801	1	14,14,15	0.18	0	15,19,21	0.31	0
2	NAG	A	806	1	14,14,15	0.20	0	15,19,21	0.33	0
2	NAG	A	811	1	14,14,15	0.25	0	15,19,21	0.28	0
2	NAG	A	816	1	14,14,15	0.17	0	15,19,21	0.33	0

Mol	Type	Chain	Res	Link	Bond lengths			Bond angles		
					Counts	RMSZ	# Z > 2	Counts	RMSZ	# Z > 2
4	BLD	A	817	-	36,37,37	3.22	12 (33%)	45,59,59	2.21	19 (42%)

In the following table, the Chirals column lists the number of chiral outliers, the number of chiral centers analysed, the number of these observed in the model and the number defined in the chemical component dictionary. Similar counts are reported in the Torsion and Rings columns. '-' means no outliers of that kind were identified.

Mol	Type	Chain	Res	Link	Chirals	Torsions	Rings
2	NAG	A	801	1	-	0/6/23/26	0/1/1/1
2	NAG	A	806	1	-	0/6/23/26	0/1/1/1
2	NAG	A	811	1	-	0/6/23/26	0/1/1/1
2	NAG	A	816	1	-	0/6/23/26	0/1/1/1
4	BLD	A	817	-	-	0/20/85/85	0/4/4/4

All (12) bond length outliers are listed below:

Mol	Chain	Res	Type	Atoms	Z	Observed(Å)	Ideal(Å)
4	A	817	BLD	O07-C07	-11.64	1.29	1.45
4	A	817	BLD	C15-C14	-4.99	1.42	1.54
4	A	817	BLD	C20-C17	-3.71	1.48	1.54
4	A	817	BLD	O22-C22	-3.49	1.34	1.43
4	A	817	BLD	O07-C06	-3.09	1.30	1.34
4	A	817	BLD	C28-C24	-2.96	1.46	1.53
4	A	817	BLD	C13-C14	-2.49	1.50	1.55
4	A	817	BLD	C10-C05	-2.11	1.52	1.56
4	A	817	BLD	C15-C16	2.68	1.61	1.54
4	A	817	BLD	C19-C10	2.96	1.59	1.54
4	A	817	BLD	C11-C09	4.56	1.61	1.53
4	A	817	BLD	O06-C06	9.67	1.45	1.21

All (19) bond angle outliers are listed below:

Mol	Chain	Res	Type	Atoms	Z	Observed(°)	Ideal(°)
4	A	817	BLD	C15-C14-C08	-7.04	107.91	119.03
4	A	817	BLD	C11-C09-C08	-3.99	105.95	111.74
4	A	817	BLD	C28-C24-C25	-3.21	106.67	112.45
4	A	817	BLD	C16-C17-C13	-2.84	100.13	103.82
4	A	817	BLD	O07-C06-O06	-2.77	111.93	116.53
4	A	817	BLD	C18-C13-C17	-2.72	106.43	111.75
4	A	817	BLD	O03-C03-C02	-2.70	104.21	110.27
4	A	817	BLD	C17-C20-C22	-2.68	106.72	111.24
4	A	817	BLD	C16-C17-C20	-2.61	109.03	112.59

Continued on next page...

Continued from previous page...

Mol	Chain	Res	Type	Atoms	Z	Observed(°)	Ideal(°)
4	A	817	BLD	C14-C08-C09	-2.53	105.73	109.06
4	A	817	BLD	C28-C24-C23	-2.51	106.07	111.24
4	A	817	BLD	C13-C17-C20	-2.36	116.11	118.91
4	A	817	BLD	C18-C13-C14	-2.20	107.45	111.75
4	A	817	BLD	C16-C15-C14	-2.16	100.77	105.12
4	A	817	BLD	O23-C23-C24	-2.03	105.22	109.59
4	A	817	BLD	C04-C03-C02	2.35	113.35	110.23
4	A	817	BLD	C12-C13-C14	2.86	111.95	107.31
4	A	817	BLD	C12-C13-C17	2.96	121.81	116.56
4	A	817	BLD	C01-C10-C05	3.65	112.87	107.16

There are no chirality outliers.

There are no torsion outliers.

There are no ring outliers.

2 monomers are involved in 2 short contacts:

Mol	Chain	Res	Type	Clashes	Symm-Clashes
2	A	816	NAG	1	0
4	A	817	BLD	1	0

5.7 Other polymers [i](#)

There are no such residues in this entry.

5.8 Polymer linkage issues [i](#)

There are no chain breaks in this entry.

6 Fit of model and data ⓘ

6.1 Protein, DNA and RNA chains ⓘ

In the following table, the column labelled ‘#RSRZ> 2’ contains the number (and percentage) of RSRZ outliers, followed by percent RSRZ outliers for the chain as percentile scores relative to all X-ray entries and entries of similar resolution. The OWAB column contains the minimum, median, 95th percentile and maximum values of the occupancy-weighted average B-factor per residue. The column labelled ‘Q< 0.9’ lists the number of (and percentage) of residues with an average occupancy less than 0.9.

Mol	Chain	Analysed	<RSRZ>	#RSRZ>2	OWAB(Å ²)	Q<0.9
1	A	743/774 (95%)	0.62	60 (8%) 15 16	41, 72, 115, 143	0

All (60) RSRZ outliers are listed below:

Mol	Chain	Res	Type	RSRZ
1	A	385	LEU	6.9
1	A	390	ALA	6.6
1	A	356	LEU	6.3
1	A	407	LEU	6.2
1	A	416	ASN	5.4
1	A	410	LEU	5.1
1	A	359	ASP	4.6
1	A	336	PHE	4.5
1	A	363	LYS	4.1
1	A	507	GLY	4.1
1	A	386	THR	3.9
1	A	388	LEU	3.9
1	A	387	ASN	3.8
1	A	358	MET	3.8
1	A	381	LEU	3.6
1	A	586	LYS	3.6
1	A	372	LEU	3.4
1	A	392	LEU	3.3
1	A	361	LEU	3.2
1	A	534	ARG	3.2
1	A	478	GLY	3.0
1	A	244	CYS	2.9
1	A	357	PRO	2.9
1	A	362	LEU	2.9
1	A	352	PHE	2.9
1	A	384	SER	2.8
1	A	395	LEU	2.7

Continued on next page...

Continued from previous page...

Mol	Chain	Res	Type	RSRZ
1	A	347	LEU	2.7
1	A	333	PRO	2.7
1	A	402	PHE	2.6
1	A	382	PRO	2.6
1	A	334	PRO	2.5
1	A	377	PHE	2.5
1	A	166	VAL	2.5
1	A	411	CYS	2.5
1	A	588	ALA	2.5
1	A	587	ILE	2.5
1	A	45[A]	VAL	2.4
1	A	501	THR	2.4
1	A	413	ASN	2.4
1	A	412	GLN	2.4
1	A	268	CYS	2.4
1	A	49	LYS	2.3
1	A	558	ASP	2.2
1	A	243	ASP	2.2
1	A	389	SER	2.2
1	A	329	TYR	2.2
1	A	311	LEU	2.2
1	A	397	LEU	2.2
1	A	669	TYR	2.1
1	A	269	THR	2.1
1	A	523	ARG	2.1
1	A	48	ASP	2.1
1	A	337	GLY	2.1
1	A	354	GLY	2.1
1	A	331	ALA	2.0
1	A	307	ILE	2.0
1	A	393	LEU	2.0
1	A	242	GLY	2.0
1	A	264	ALA	2.0

6.2 Non-standard residues in protein, DNA, RNA chains ⓘ

There are no non-standard protein/DNA/RNA residues in this entry.

6.3 Carbohydrates [i](#)

In the following table, the Atoms column lists the number of modelled atoms in the group and the number defined in the chemical component dictionary. LLDF column lists the quality of electron density of the group with respect to its neighbouring residues in protein, DNA or RNA chains. The B-factors column lists the minimum, median, 95th percentile and maximum values of B factors of atoms in the group. The column labelled 'Q< 0.9' lists the number of atoms with occupancy less than 0.9.

Mol	Type	Chain	Res	Atoms	RSCC	RSR	LLDF	B-factors(Å ²)	Q<0.9
3	NAG	A	807	14/15	0.93	0.15	0.09	44,62,69,85	0
3	NAG	A	812	14/15	0.96	0.19	0.04	51,62,71,73	0
3	NAG	A	813	14/15	0.93	0.16	-0.58	61,79,92,92	0
3	NAG	A	802	14/15	0.97	0.13	-1.02	35,42,61,63	0
3	NAG	A	803	14/15	0.92	0.18	-	54,77,93,98	0
3	MAN	A	805	11/12	0.72	0.34	-	138,153,155,156	0
3	BMA	A	814	11/12	0.81	0.19	-	102,126,138,147	0
3	MAN	A	815	11/12	0.79	0.22	-	114,135,139,139	0
3	BMA	A	804	11/12	0.89	0.24	-	108,130,140,149	0
3	MAN	A	810	11/12	0.63	0.49	-	127,145,150,151	0
3	NAG	A	808	14/15	0.81	0.20	-	58,109,126,138	0
3	BMA	A	809	11/12	0.75	0.33	-	134,141,144,147	0

6.4 Ligands [i](#)

In the following table, the Atoms column lists the number of modelled atoms in the group and the number defined in the chemical component dictionary. LLDF column lists the quality of electron density of the group with respect to its neighbouring residues in protein, DNA or RNA chains. The B-factors column lists the minimum, median, 95th percentile and maximum values of B factors of atoms in the group. The column labelled 'Q< 0.9' lists the number of atoms with occupancy less than 0.9.

Mol	Type	Chain	Res	Atoms	RSCC	RSR	LLDF	B-factors(Å ²)	Q<0.9
2	NAG	A	816	14/15	0.70	0.22	4.75	94,118,127,130	0
2	NAG	A	806	14/15	0.86	0.19	0.89	66,90,95,102	0
4	BLD	A	817	34/34	0.97	0.17	-0.33	46,60,70,80	0
2	NAG	A	811	14/15	0.88	0.25	-	100,112,120,120	0
2	NAG	A	801	14/15	0.81	0.14	-	72,92,107,113	0

6.5 Other polymers [i](#)

There are no such residues in this entry.