



wwPDB X-ray Structure Validation Summary Report ⓘ

Feb 1, 2016 – 06:29 PM GMT

PDB ID : 4LSC
Title : Isolated SERK1 co-receptor ectodomain at high resolution
Authors : Santiago, J.; Henzler, C.; Hothorn, M.
Deposited on : 2013-07-22
Resolution : 1.53 Å(reported)

This is a wwPDB X-ray Structure Validation Summary Report for a publicly released PDB entry.
We welcome your comments at validation@mail.wwpdb.org
A user guide is available at
<http://wwpdb.org/validation/2016/XrayValidationReportHelp>
with specific help available everywhere you see the ⓘ symbol.

The following versions of software and data (see [references ⓘ](#)) were used in the production of this report:

MolProbity : 4.02b-467
Mogul : 1.7 (RC4), CSD as536be (2015)
Xtriage (Phenix) : 1.9-1692
EDS : rb-20026688
Percentile statistics : 20151230.v01 (using entries in the PDB archive December 30th 2015)
Refmac : 5.8.0135
CCP4 : 6.5.0
Ideal geometry (proteins) : Engh & Huber (2001)
Ideal geometry (DNA, RNA) : Parkinson et al. (1996)
Validation Pipeline (wwPDB-VP) : trunk26865

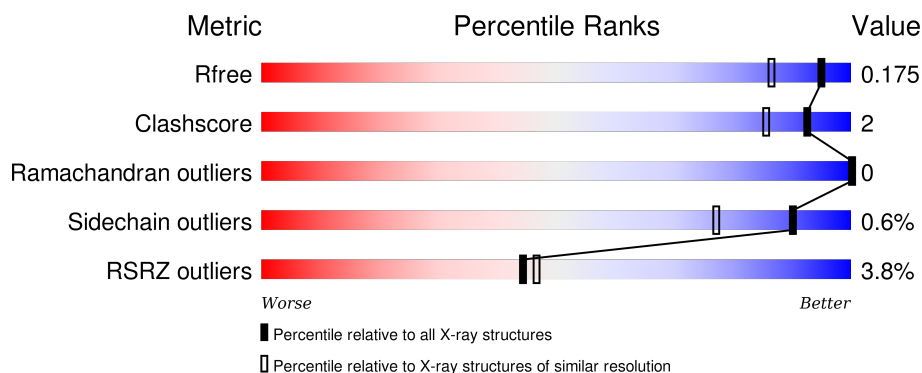
1 Overall quality at a glance

The following experimental techniques were used to determine the structure:

X-RAY DIFFRACTION

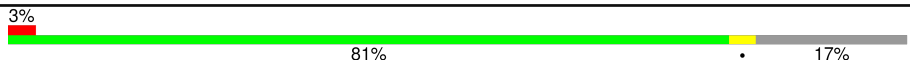
The reported resolution of this entry is 1.53 Å.

Percentile scores (ranging between 0-100) for global validation metrics of the entry are shown in the following graphic. The table shows the number of entries on which the scores are based.



Metric	Whole archive (#Entries)	Similar resolution (#Entries, resolution range(Å))
R_{free}	91344	2658 (1.54-1.50)
Clashscore	102246	2887 (1.54-1.50)
Ramachandran outliers	100387	2818 (1.54-1.50)
Sidechain outliers	100360	2816 (1.54-1.50)
RSRZ outliers	91569	2660 (1.54-1.50)

The table below summarises the geometric issues observed across the polymeric chains and their fit to the electron density. The red, orange, yellow and green segments on the lower bar indicate the fraction of residues that contain outliers for ≥ 3 , 2, 1 and 0 types of geometric quality criteria. A grey segment represents the fraction of residues that are not modelled. The numeric value for each fraction is indicated below the corresponding segment, with a dot representing fractions $\leq 5\%$. The upper red bar (where present) indicates the fraction of residues that have poor fit to the electron density. The numeric value is given above the bar.

Mol	Chain	Length	Quality of chain
1	A	223	

The following table lists non-polymeric compounds, carbohydrate monomers and non-standard residues in protein, DNA, RNA chains that are outliers for geometric or electron-density-fit criteria:

Mol	Type	Chain	Res	Chirality	Geometry	Clashes	Electron density
2	FUC	A	1003	-	-	-	X

2 Entry composition

There are 4 unique types of molecules in this entry. The entry contains 3136 atoms, of which 1463 are hydrogens and 0 are deuteriums.

In the tables below, the ZeroOcc column contains the number of atoms modelled with zero occupancy, the AltConf column contains the number of residues with at least one atom in alternate conformation and the Trace column contains the number of residues modelled with at most 2 atoms.

- Molecule 1 is a protein called Somatic embryogenesis receptor kinase 1.

Mol	Chain	Residues	Atoms						ZeroOcc	AltConf	Trace
1	A	186	Total	C	H	N	O	S	0	10	0
			2911	922	1463	244	277	5			

There are 35 discrepancies between the modelled and reference sequences:

Chain	Residue	Modelled	Actual	Comment	Reference
A	19	ALA	-	EXPRESSION TAG	UNP Q94AG2
A	20	GLY	-	EXPRESSION TAG	UNP Q94AG2
A	21	SER	-	EXPRESSION TAG	UNP Q94AG2
A	22	SER	-	EXPRESSION TAG	UNP Q94AG2
A	23	MET	-	EXPRESSION TAG	UNP Q94AG2
A	115	ASP	ASN	ENGINEERED MUTATION	UNP Q94AG2
A	163	GLN	ASN	ENGINEERED MUTATION	UNP Q94AG2
A	214	LEU	-	EXPRESSION TAG	UNP Q94AG2
A	215	GLU	-	EXPRESSION TAG	UNP Q94AG2
A	216	ASN	-	EXPRESSION TAG	UNP Q94AG2
A	217	LEU	-	EXPRESSION TAG	UNP Q94AG2
A	218	TYR	-	EXPRESSION TAG	UNP Q94AG2
A	219	PHE	-	EXPRESSION TAG	UNP Q94AG2
A	220	GLN	-	EXPRESSION TAG	UNP Q94AG2
A	221	GLY	-	EXPRESSION TAG	UNP Q94AG2
A	222	ALA	-	EXPRESSION TAG	UNP Q94AG2
A	223	TRP	-	EXPRESSION TAG	UNP Q94AG2
A	224	SER	-	EXPRESSION TAG	UNP Q94AG2
A	225	HIS	-	EXPRESSION TAG	UNP Q94AG2
A	226	PRO	-	EXPRESSION TAG	UNP Q94AG2
A	227	GLN	-	EXPRESSION TAG	UNP Q94AG2
A	228	PHE	-	EXPRESSION TAG	UNP Q94AG2
A	229	GLU	-	EXPRESSION TAG	UNP Q94AG2
A	230	LYS	-	EXPRESSION TAG	UNP Q94AG2
A	231	GLY	-	EXPRESSION TAG	UNP Q94AG2
A	232	SER	-	EXPRESSION TAG	UNP Q94AG2
A	233	HIS	-	EXPRESSION TAG	UNP Q94AG2

Continued on next page...

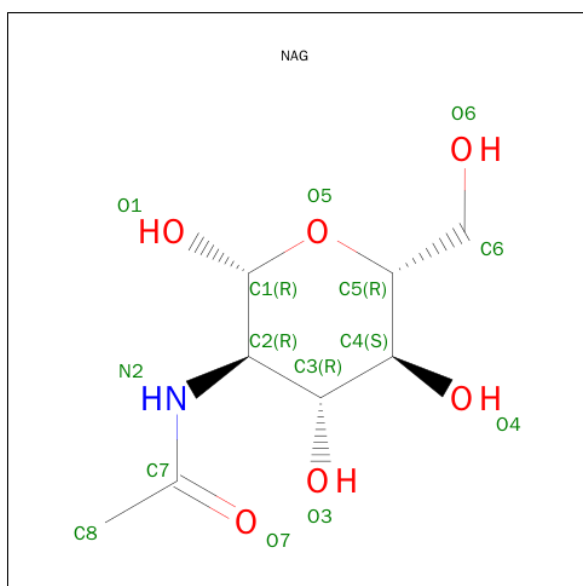
Continued from previous page...

Chain	Residue	Modelled	Actual	Comment	Reference
A	234	HIS	-	EXPRESSION TAG	UNP Q94AG2
A	235	HIS	-	EXPRESSION TAG	UNP Q94AG2
A	236	HIS	-	EXPRESSION TAG	UNP Q94AG2
A	237	HIS	-	EXPRESSION TAG	UNP Q94AG2
A	238	HIS	-	EXPRESSION TAG	UNP Q94AG2
A	239	HIS	-	EXPRESSION TAG	UNP Q94AG2
A	240	HIS	-	EXPRESSION TAG	UNP Q94AG2
A	241	HIS	-	EXPRESSION TAG	UNP Q94AG2

- Molecule 2 is a polymer of unknown type called SUGAR (4-MER).

Mol	Chain	Residues	Atoms				ZeroOcc	AltConf
2	A	4	Total	C	N	O	0	0
			49	28	2	19		

- Molecule 3 is SUGAR (N-ACETYL-D-GLUCOSAMINE) (three-letter code: NAG) (formula: $C_8H_{15}NO_6$).



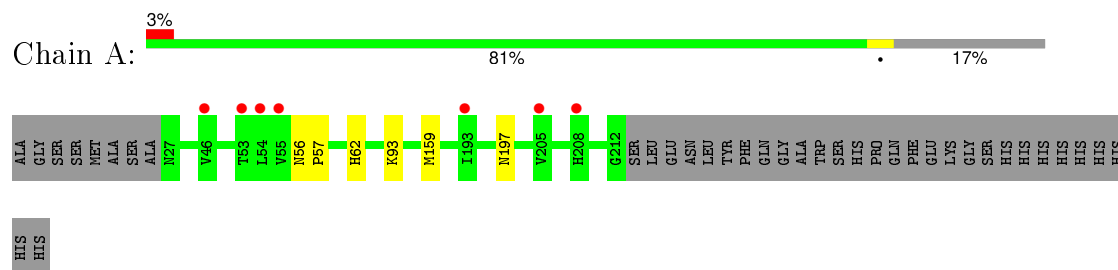
Mol	Chain	Residues	Atoms				ZeroOcc	AltConf
3	A	1	Total	C	N	O	0	0
			14	8	1	5		
3	A	1	Total	C	N	O	0	0
			14	8	1	5		

- Molecule 4 is water.

Mol	Chain	Residues	Atoms		ZeroOcc	AltConf
4	A	148	Total 148	O 148	0	0

i

- Molecule 1: Somatic embryogenesis receptor kinase 1



4 Data and refinement statistics

Property	Value	Source
Space group	P 61	Depositor
Cell constants a, b, c, α , β , γ	72.63 Å 72.63 Å 80.97 Å 90.00° 90.00° 120.00°	Depositor
Resolution (Å)	49.67 – 1.53 49.67 – 1.53	Depositor EDS
% Data completeness (in resolution range)	100.0 (49.67-1.53) 100.0 (49.67-1.53)	Depositor EDS
R_{merge}	0.07	Depositor
R_{sym}	0.07	Depositor
$\langle I/\sigma(I) \rangle$ ¹	2.08 (at 1.53 Å)	Xtriage
Refinement program	PHENIX (phenix.refine: dev_1334)	Depositor
R, R_{free}	0.167 , 0.177 0.162 , 0.175	Depositor DCC
R_{free} test set	1830 reflections (5.00%)	DCC
Wilson B-factor (Å ²)	21.3	Xtriage
Anisotropy	0.080	Xtriage
Bulk solvent k_{sol} (e/Å ³), B_{sol} (Å ²)	0.48 , 50.6	EDS
Estimated twinning fraction	0.053 for h,-h-k,-l	Xtriage
L-test for twinning ²	$\langle L \rangle = 0.50$, $\langle L^2 \rangle = 0.33$	Xtriage
Outliers	0 of 36620 reflections	Xtriage
F_o, F_c correlation	0.97	EDS
Total number of atoms	3136	wwPDB-VP
Average B, all atoms (Å ²)	30.0	wwPDB-VP

Xtriage's analysis on translational NCS is as follows: *The largest off-origin peak in the Patterson function is 4.24% of the height of the origin peak. No significant pseudotranslation is detected.*

¹ Intensities estimated from amplitudes.

² Theoretical values of $\langle |L| \rangle$, $\langle L^2 \rangle$ for acentric reflections are 0.5, 0.375 respectively for untwinned datasets, and 0.333, 0.2 for perfectly twinned datasets.

5 Model quality

5.1 Standard geometry

Bond lengths and bond angles in the following residue types are not validated in this section: BMA, NAG, FUC

The Z score for a bond length (or angle) is the number of standard deviations the observed value is removed from the expected value. A bond length (or angle) with $|Z| > 5$ is considered an outlier worth inspection. RMSZ is the root-mean-square of all Z scores of the bond lengths (or angles).

Mol	Chain	Bond lengths		Bond angles	
		RMSZ	$\# Z > 5$	RMSZ	$\# Z > 5$
1	A	0.44	0/1510	0.63	0/2074

There are no bond length outliers.

There are no bond angle outliers.

There are no chirality outliers.

There are no planarity outliers.

5.2 Too-close contacts

In the following table, the Non-H and H(model) columns list the number of non-hydrogen atoms and hydrogen atoms in the chain respectively. The H(added) column lists the number of hydrogen atoms added and optimized by MolProbity. The Clashes column lists the number of clashes within the asymmetric unit, whereas Symm-Clashes lists symmetry related clashes.

Mol	Chain	Non-H	H(model)	H(added)	Clashes	Symm-Clashes
1	A	1448	1463	1450	6	0
2	A	49	0	43	0	0
3	A	28	0	26	4	0
4	A	148	0	0	1	0
All	All	1673	1463	1519	6	0

The all-atom clashscore is defined as the number of clashes found per 1000 atoms (including hydrogen atoms). The all-atom clashscore for this structure is 2.

The worst 5 of 6 close contacts within the same asymmetric unit are listed below, sorted by their clash magnitude.

Atom-1	Atom-2	Interatomic distance (Å)	Clash overlap (Å)
1:A:159:MET:CE	3:A:1005:NAG:H5	2.11	0.80
1:A:159:MET:HE2	3:A:1005:NAG:H5	1.83	0.58
1:A:159:MET:HE3	3:A:1005:NAG:H5	1.88	0.51
1:A:62:HIS:ND1	4:A:1212:HOH:O	2.35	0.48
1:A:197:ASN:ND2	3:A:1004:NAG:O6	2.47	0.47

There are no symmetry-related clashes.

5.3 Torsion angles [i](#)

5.3.1 Protein backbone [i](#)

In the following table, the Percentiles column shows the percent Ramachandran outliers of the chain as a percentile score with respect to all X-ray entries followed by that with respect to entries of similar resolution.

The Analysed column shows the number of residues for which the backbone conformation was analysed, and the total number of residues.

Mol	Chain	Analysed	Favoured	Allowed	Outliers	Percentiles	
1	A	194/223 (87%)	188 (97%)	6 (3%)	0	100	100

There are no Ramachandran outliers to report.

5.3.2 Protein sidechains [i](#)

In the following table, the Percentiles column shows the percent sidechain outliers of the chain as a percentile score with respect to all X-ray entries followed by that with respect to entries of similar resolution.

The Analysed column shows the number of residues for which the sidechain conformation was analysed, and the total number of residues.

Mol	Chain	Analysed	Rotameric	Outliers	Percentiles	
1	A	174/200 (87%)	173 (99%)	1 (1%)	90	77

All (1) residues with a non-rotameric sidechain are listed below:

Mol	Chain	Res	Type
1	A	93	LYS

Some sidechains can be flipped to improve hydrogen bonding and reduce clashes. All (2) such sidechains are listed below:

Mol	Chain	Res	Type
1	A	174	ASN
1	A	197	ASN

5.3.3 RNA ⓘ

There are no RNA molecules in this entry.

5.4 Non-standard residues in protein, DNA, RNA chains ⓘ

There are no non-standard protein/DNA/RNA residues in this entry.

5.5 Carbohydrates ⓘ

4 carbohydrates are modelled in this entry.

In the following table, the Counts columns list the number of bonds (or angles) for which Mogul statistics could be retrieved, the number of bonds (or angles) that are observed in the model and the number of bonds (or angles) that are defined in the chemical component dictionary. The Link column lists molecule types, if any, to which the group is linked. The Z score for a bond length (or angle) is the number of standard deviations the observed value is removed from the expected value. A bond length (or angle) with $|Z| > 2$ is considered an outlier worth inspection. RMSZ is the root-mean-square of all Z scores of the bond lengths (or angles).

Mol	Type	Chain	Res	Link	Bond lengths			Bond angles		
					Counts	RMSZ	# $ Z > 2$	Counts	RMSZ	# $ Z > 2$
2	NAG	A	1000	1,2	14,14,15	0.36	0	15,19,21	0.68	0
2	NAG	A	1001	2	14,14,15	0.87	1 (7%)	15,19,21	0.88	2 (13%)
2	BMA	A	1002	2	11,11,12	1.59	3 (27%)	14,15,17	1.97	4 (28%)
2	FUC	A	1003	2	10,10,11	0.99	0	14,14,16	1.12	1 (7%)

In the following table, the Chirals column lists the number of chiral outliers, the number of chiral centers analysed, the number of these observed in the model and the number defined in the chemical component dictionary. Similar counts are reported in the Torsion and Rings columns. '-' means no outliers of that kind were identified.

Mol	Type	Chain	Res	Link	Chirals	Torsions	Rings
2	NAG	A	1000	1,2	-	0/6/23/26	0/1/1/1
2	NAG	A	1001	2	-	0/6/23/26	0/1/1/1
2	BMA	A	1002	2	-	0/2/19/22	0/1/1/1

Continued on next page...

Continued from previous page...

Mol	Type	Chain	Res	Link	Chirals	Torsions	Rings
2	FUC	A	1003	2	-	0/0/17/20	0/1/1/1

All (4) bond length outliers are listed below:

Mol	Chain	Res	Type	Atoms	Z	Observed(Å)	Ideal(Å)
2	A	1001	NAG	O5-C1	-3.13	1.38	1.43
2	A	1002	BMA	O5-C1	-2.42	1.39	1.43
2	A	1002	BMA	C4-C3	3.20	1.60	1.52
2	A	1002	BMA	C4-C5	3.22	1.59	1.53

The worst 5 of 7 bond angle outliers are listed below:

Mol	Chain	Res	Type	Atoms	Z	Observed(°)	Ideal(°)
2	A	1002	BMA	C1-C2-C3	-4.20	104.57	109.54
2	A	1002	BMA	C1-O5-C5	-2.81	108.68	112.25
2	A	1001	NAG	O4-C4-C5	-2.22	103.36	109.24
2	A	1002	BMA	C2-C3-C4	2.07	114.56	111.04
2	A	1003	FUC	C1-O5-C5	2.08	115.59	112.38

There are no chirality outliers.

There are no torsion outliers.

There are no ring outliers.

No monomer is involved in short contacts.

5.6 Ligand geometry [i](#)

2 ligands are modelled in this entry.

In the following table, the Counts columns list the number of bonds (or angles) for which Mogul statistics could be retrieved, the number of bonds (or angles) that are observed in the model and the number of bonds (or angles) that are defined in the chemical component dictionary. The Link column lists molecule types, if any, to which the group is linked. The Z score for a bond length (or angle) is the number of standard deviations the observed value is removed from the expected value. A bond length (or angle) with $|Z| > 2$ is considered an outlier worth inspection. RMSZ is the root-mean-square of all Z scores of the bond lengths (or angles).

Mol	Type	Chain	Res	Link	Bond lengths			Bond angles		
					Counts	RMSZ	$\# Z > 2$	Counts	RMSZ	$\# Z > 2$
3	NAG	A	1004	1	14,14,15	0.27	0	15,19,21	0.77	1 (6%)
3	NAG	A	1005	1	14,14,15	0.21	0	15,19,21	0.33	0

In the following table, the Chirals column lists the number of chiral outliers, the number of chiral centers analysed, the number of these observed in the model and the number defined in the chemical component dictionary. Similar counts are reported in the Torsion and Rings columns. '-' means no outliers of that kind were identified.

Mol	Type	Chain	Res	Link	Chirals	Torsions	Rings
3	NAG	A	1004	1	-	0/6/23/26	0/1/1/1
3	NAG	A	1005	1	-	0/6/23/26	0/1/1/1

There are no bond length outliers.

All (1) bond angle outliers are listed below:

Mol	Chain	Res	Type	Atoms	Z	Observed(°)	Ideal(°)
3	A	1004	NAG	C1-O5-C5	2.67	115.64	112.25

There are no chirality outliers.

There are no torsion outliers.

There are no ring outliers.

2 monomers are involved in 4 short contacts:

Mol	Chain	Res	Type	Clashes	Symm-Clashes
3	A	1004	NAG	1	0
3	A	1005	NAG	3	0

5.7 Other polymers [i](#)

There are no such residues in this entry.

5.8 Polymer linkage issues [i](#)

There are no chain breaks in this entry.

6 Fit of model and data [i](#)

6.1 Protein, DNA and RNA chains [i](#)

In the following table, the column labelled ‘#RSRZ> 2’ contains the number (and percentage) of RSRZ outliers, followed by percent RSRZ outliers for the chain as percentile scores relative to all X-ray entries and entries of similar resolution. The OWAB column contains the minimum, median, 95th percentile and maximum values of the occupancy-weighted average B-factor per residue. The column labelled ‘Q< 0.9’ lists the number of (and percentage) of residues with an average occupancy less than 0.9.

Mol	Chain	Analysed	<RSRZ>	#RSRZ>2	OWAB(Å ²)	Q<0.9
1	A	186/223 (83%)	0.21	7 (3%) 44 47	15, 23, 48, 65	0

The worst 5 of 7 RSRZ outliers are listed below:

Mol	Chain	Res	Type	RSRZ
1	A	55	VAL	5.3
1	A	54	LEU	3.7
1	A	208[A]	HIS	3.5
1	A	53	THR	2.8
1	A	193[A]	ILE	2.7

6.2 Non-standard residues in protein, DNA, RNA chains [i](#)

There are no non-standard protein/DNA/RNA residues in this entry.

6.3 Carbohydrates [i](#)

In the following table, the Atoms column lists the number of modelled atoms in the group and the number defined in the chemical component dictionary. LLDF column lists the quality of electron density of the group with respect to its neighbouring residues in protein, DNA or RNA chains. The B-factors column lists the minimum, median, 95th percentile and maximum values of B factors of atoms in the group. The column labelled ‘Q< 0.9’ lists the number of atoms with occupancy less than 0.9.

Mol	Type	Chain	Res	Atoms	RSCC	RSR	LLDF	B-factors(Å ²)	Q<0.9
2	FUC	A	1003	10/11	0.88	0.27	6.20	20,27,30,30	0
2	NAG	A	1000	14/15	0.82	0.11	0.58	23,27,30,34	0
2	BMA	A	1002	11/12	0.47	0.51	-	84,89,92,93	0
2	NAG	A	1001	14/15	0.74	0.26	-	33,48,57,79	0

6.4 Ligands [i](#)

In the following table, the Atoms column lists the number of modelled atoms in the group and the number defined in the chemical component dictionary. LLDF column lists the quality of electron density of the group with respect to its neighbouring residues in protein, DNA or RNA chains. The B-factors column lists the minimum, median, 95th percentile and maximum values of B factors of atoms in the group. The column labelled 'Q< 0.9' lists the number of atoms with occupancy less than 0.9.

Mol	Type	Chain	Res	Atoms	RSCC	RSR	LLDF	B-factors(\AA^2)	Q<0.9
3	NAG	A	1005	14/15	0.83	0.16	0.36	54,65,80,85	0
3	NAG	A	1004	14/15	0.85	0.23	-	26,36,46,64	0

6.5 Other polymers [i](#)

There are no such residues in this entry.