



Full wwPDB X-ray Structure Validation Report ⓘ

Jan 31, 2016 – 08:44 PM GMT

PDB ID : 1LUG
Title : Full Matrix Error Analysis of Carbonic Anhydrase
Authors : Merritt, E.A.; Le Trong, I.; Behnke, C.A.
Deposited on : 2002-05-22
Resolution : 0.95 Å(reported)

This is a Full wwPDB X-ray Structure Validation Report for a publicly released PDB entry.
We welcome your comments at validation@mail.wwpdb.org
A user guide is available at
<http://wwpdb.org/validation/2016/XrayValidationReportHelp>
with specific help available everywhere you see the ⓘ symbol.

The following versions of software and data (see [references ⓘ](#)) were used in the production of this report:

MolProbity : 4.02b-467
Mogul : 1.7 (RC4), CSD as536be (2015)
Xtriage (Phenix) : **NOT EXECUTED**
EDS : **NOT EXECUTED**
Percentile statistics : 20151230.v01 (using entries in the PDB archive December 30th 2015)
Ideal geometry (proteins) : Engh & Huber (2001)
Ideal geometry (DNA, RNA) : Parkinson et al. (1996)
Validation Pipeline (wwPDB-VP) : trunk26865

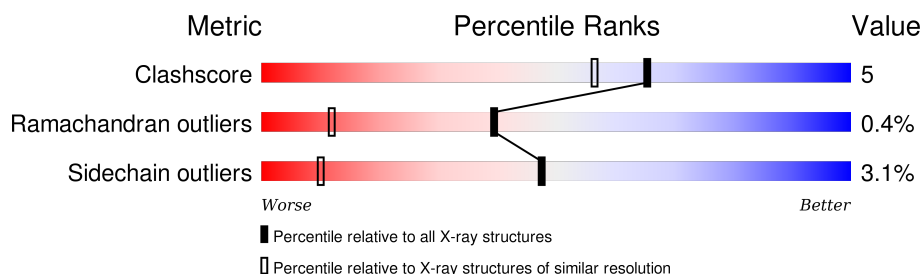
1 Overall quality at a glance

The following experimental techniques were used to determine the structure:

X-RAY DIFFRACTION

The reported resolution of this entry is 0.95 Å.

Percentile scores (ranging between 0-100) for global validation metrics of the entry are shown in the following graphic. The table shows the number of entries on which the scores are based.



Metric	Whole archive (#Entries)	Similar resolution (#Entries, resolution range(Å))
Clashscore	102246	1031 (1.08-0.84)
Ramachandran outliers	100387	1331 (1.10-0.82)
Sidechain outliers	100360	1330 (1.10-0.82)

The table below summarises the geometric issues observed across the polymeric chains and their fit to the electron density. The red, orange, yellow and green segments on the lower bar indicate the fraction of residues that contain outliers for ≥ 3 , 2, 1 and 0 types of geometric quality criteria. A grey segment represents the fraction of residues that are not modelled. The numeric value for each fraction is indicated below the corresponding segment, with a dot representing fractions $\leq 5\%$. The upper red bar (where present) indicates the fraction of residues that have poor fit to the electron density. The numeric value is given above the bar.

Note EDS was not executed.

Mol	Chain	Length	Quality of chain
1	A	259	 80% 16% . .

2 Entry composition [i](#)

There are 7 unique types of molecules in this entry. The entry contains 2516 atoms, of which 0 are hydrogens and 0 are deuteriums.

In the tables below, the ZeroOcc column contains the number of atoms modelled with zero occupancy, the AltConf column contains the number of residues with at least one atom in alternate conformation and the Trace column contains the number of residues modelled with at most 2 atoms.

- Molecule 1 is a protein called Carbonic Anhydrase II.

Mol	Chain	Residues	Atoms					ZeroOcc	AltConf	Trace
1	A	259	Total	C	N	O	S	0	16	0
			2120	1361	363	393	3			

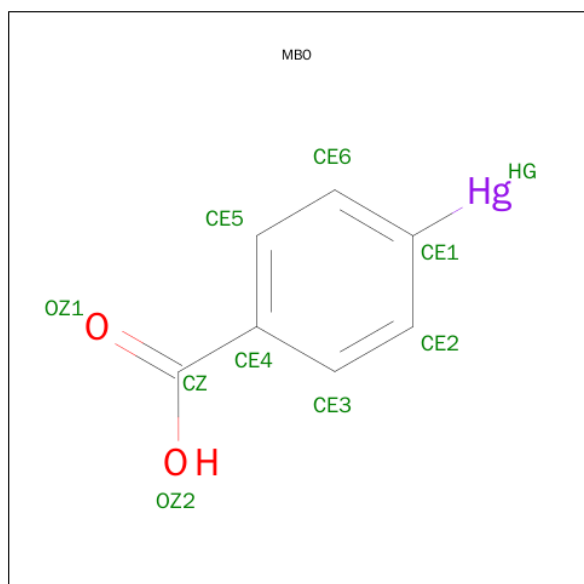
- Molecule 2 is ZINC ION (three-letter code: ZN) (formula: Zn).

Mol	Chain	Residues	Atoms		ZeroOcc	AltConf
2	A	1	Total	Zn	0	0
			1	1		

- Molecule 3 is MERCURY (II) ION (three-letter code: HG) (formula: Hg).

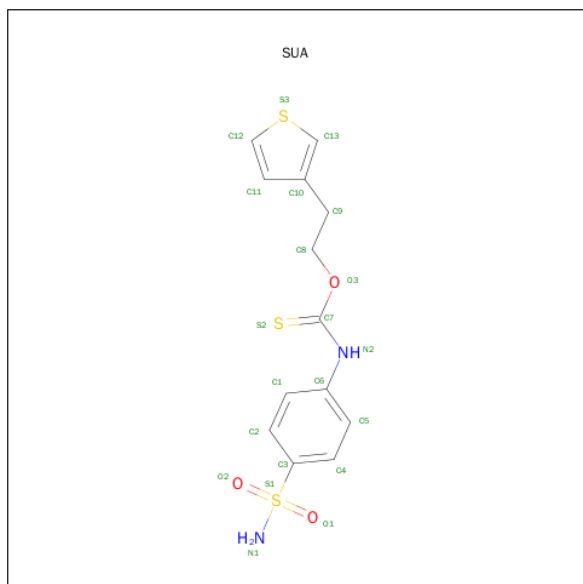
Mol	Chain	Residues	Atoms		ZeroOcc	AltConf
3	A	1	Total	Hg	0	0
			1	1		

- Molecule 4 is MERCURIBENZOIC ACID (three-letter code: MBO) (formula: C₇H₅HgO₂).



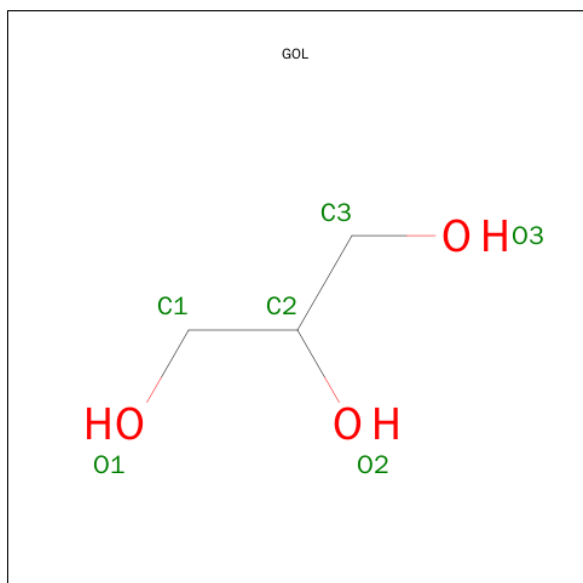
Mol	Chain	Residues	Atoms				ZeroOcc	AltConf
4	A	1	Total	C	Hg	O	0	1
			20	14	2	4		

- Molecule 5 is (4-SULFAMOYL-PHENYL)-THIOCARBAMIC ACID O-(2-THIOPHEN-3-YL-ETHYL) ESTER (three-letter code: SUA) (formula: $C_{13}H_{14}N_2O_3S_3$).



Mol	Chain	Residues	Atoms					ZeroOcc	AltConf
5	A	1	Total	C	N	O	S	0	1
			18	11	2	3	2		

- Molecule 6 is GLYCEROL (three-letter code: GOL) (formula: $C_3H_8O_3$).



Mol	Chain	Residues	Atoms			ZeroOcc	AltConf
6	A	1	Total	C	O	0	1
			12	6	6		
6	A	1	Total	C	O	0	0
			6	3	3		

- Molecule 7 is water.

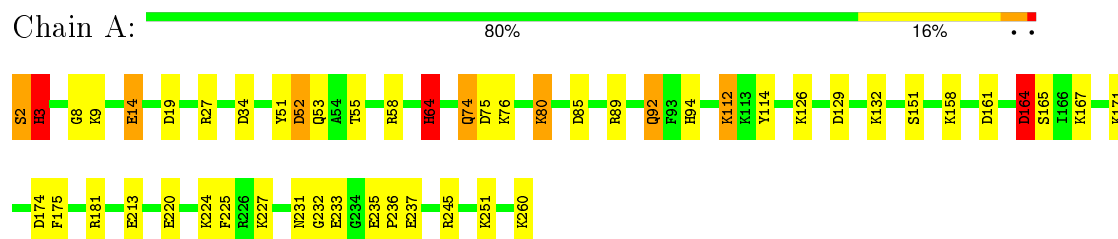
Mol	Chain	Residues	Atoms		ZeroOcc	AltConf
7	A	337	Total	O	0	1
			338	338		

3 Residue-property plots [i](#)

These plots are drawn for all protein, RNA and DNA chains in the entry. The first graphic for a chain summarises the proportions of errors displayed in the second graphic. The second graphic shows the sequence view annotated by issues in geometry and electron density. Residues are color-coded according to the number of geometric quality criteria for which they contain at least one outlier: green = 0, yellow = 1, orange = 2 and red = 3 or more. A red dot above a residue indicates a poor fit to the electron density ($\text{RSRZ} > 2$). Stretches of 2 or more consecutive residues without any outlier are shown as a green connector. Residues present in the sample, but not in the model, are shown in grey.

Note EDS was not executed.

• Molecule 1: Carbonic Anhydrase II



4 Data and refinement statistics

Xtriage (Phenix) and EDS were not executed - this section will therefore be incomplete.

Property	Value	Source
Space group	P 1 21 1	Depositor
Cell constants a, b, c, α , β , γ	42.06 Å 41.31 Å 71.87 Å 90.00° 104.23° 90.00°	Depositor
Resolution (Å)	15.00 – 0.95	Depositor
% Data completeness (in resolution range)	(Not available) (15.00-0.95)	Depositor
R_{merge}	0.07	Depositor
R_{sym}	(Not available)	Depositor
Refinement program	SHELXL-97	Depositor
R, R_{free}	0.119 , 0.141	Depositor
Estimated twinning fraction	No twinning to report.	Xtriage
Total number of atoms	2516	wwPDB-VP
Average B, all atoms (Å ²)	14.0	wwPDB-VP

5 Model quality

5.1 Standard geometry

Bond lengths and bond angles in the following residue types are not validated in this section: GOL, ZN, MBO, HG, SUA

The Z score for a bond length (or angle) is the number of standard deviations the observed value is removed from the expected value. A bond length (or angle) with $|Z| > 5$ is considered an outlier worth inspection. RMSZ is the root-mean-square of all Z scores of the bond lengths (or angles).

Mol	Chain	Bond lengths		Bond angles	
		RMSZ	$\# Z > 5$	RMSZ	$\# Z > 5$
1	A	1.39	26/2251 (1.2%)	1.75	70/3045 (2.3%)

Chiral center outliers are detected by calculating the chiral volume of a chiral center and verifying if the center is modelled as a planar moiety or with the opposite hand. A planarity outlier is detected by checking planarity of atoms in a peptide group, atoms in a mainchain group or atoms of a sidechain that are expected to be planar.

Mol	Chain	#Chirality outliers	#Planarity outliers
1	A	0	1

All (26) bond length outliers are listed below:

Mol	Chain	Res	Type	Atoms	Z	Observed(Å)	Ideal(Å)
1	A	27	ARG	CD-NE	-10.91	1.27	1.46
1	A	14	GLU	CD-OE2	10.06	1.36	1.25
1	A	2	SER	CB-OG	8.99	1.53	1.42
1	A	3	HIS	C-O	8.13	1.38	1.23
1	A	151	SER	CB-OG	-7.61	1.32	1.42
1	A	231	ASN	C-N	6.71	1.45	1.33
1	A	3	HIS	CA-C	6.70	1.70	1.52
1	A	233	GLU	CG-CD	-6.62	1.42	1.51
1	A	2	SER	CA-CB	6.55	1.62	1.52
1	A	158	LYS	CE-NZ	6.38	1.65	1.49
1	A	213	GLU	CD-OE1	-6.22	1.18	1.25
1	A	80	LYS	CB-CG	-6.15	1.35	1.52
1	A	165	SER	CB-OG	-6.09	1.34	1.42
1	A	76	LYS	C-N	-6.07	1.20	1.34
1	A	181	ARG	CZ-NH1	6.04	1.41	1.33
1	A	237	GLU	CD-OE1	5.98	1.32	1.25
1	A	129[A]	ASP	CA-CB	-5.95	1.40	1.53
1	A	129[B]	ASP	CA-CB	-5.95	1.40	1.53

Continued on next page...

Continued from previous page...

Mol	Chain	Res	Type	Atoms	Z	Observed(Å)	Ideal(Å)
1	A	9	LYS	CA-CB	5.46	1.66	1.53
1	A	232	GLY	CA-C	5.35	1.60	1.51
1	A	19	ASP	CG-OD1	-5.30	1.13	1.25
1	A	89	ARG	CZ-NH2	-5.29	1.26	1.33
1	A	220	GLU	CD-OE1	-5.21	1.20	1.25
1	A	3	HIS	CA-CB	5.18	1.65	1.53
1	A	112[A]	LYS	CG-CD	-5.14	1.34	1.52
1	A	112[B]	LYS	CG-CD	-5.14	1.34	1.52

All (70) bond angle outliers are listed below:

Mol	Chain	Res	Type	Atoms	Z	Observed(°)	Ideal(°)
1	A	27	ARG	NE-CZ-NH1	17.63	129.12	120.30
1	A	2	SER	C-N-CA	15.27	159.88	121.70
1	A	164	ASP	CB-CG-OD1	15.27	132.04	118.30
1	A	58	ARG	NE-CZ-NH1	15.27	127.93	120.30
1	A	27	ARG	NE-CZ-NH2	-13.99	113.31	120.30
1	A	3	HIS	CA-C-O	-13.01	92.78	120.10
1	A	3	HIS	CA-C-N	12.92	145.63	117.20
1	A	164	ASP	CB-CG-OD2	-12.73	106.84	118.30
1	A	181	ARG	NE-CZ-NH2	-11.93	114.33	120.30
1	A	19	ASP	CB-CG-OD1	10.88	128.09	118.30
1	A	3	HIS	N-CA-CB	10.52	129.54	110.60
1	A	27	ARG	CG-CD-NE	10.43	133.71	111.80
1	A	225	PHE	CB-CG-CD1	9.46	127.42	120.80
1	A	251[A]	LYS	CA-CB-CG	9.34	133.95	113.40
1	A	251[B]	LYS	CA-CB-CG	9.34	133.95	113.40
1	A	161	ASP	CB-CG-OD2	-9.30	109.93	118.30
1	A	3	HIS	CB-CA-C	-9.12	92.17	110.40
1	A	27	ARG	CD-NE-CZ	8.96	136.15	123.60
1	A	58	ARG	NE-CZ-NH2	-8.60	116.00	120.30
1	A	14	GLU	OE1-CD-OE2	8.29	133.25	123.30
1	A	14	GLU	CG-CD-OE1	-7.97	102.36	118.30
1	A	75[A]	ASP	N-CA-CB	-7.64	96.85	110.60
1	A	75[B]	ASP	N-CA-CB	-7.64	96.85	110.60
1	A	171	LYS	CD-CE-NZ	7.63	129.25	111.70
1	A	76	LYS	C-N-CA	7.44	140.29	121.70
1	A	3	HIS	CG-ND1-CE1	7.29	118.41	108.20
1	A	181	ARG	NE-CZ-NH1	7.20	123.90	120.30
1	A	89	ARG	NE-CZ-NH1	7.06	123.83	120.30
1	A	129[A]	ASP	CB-CA-C	6.87	124.14	110.40
1	A	129[B]	ASP	CB-CA-C	6.87	124.14	110.40

Continued on next page...

Continued from previous page...

Mol	Chain	Res	Type	Atoms	Z	Observed(°)	Ideal(°)
1	A	220	GLU	OE1-CD-OE2	-6.83	115.11	123.30
1	A	3	HIS	ND1-CG-CD2	-6.69	96.63	106.00
1	A	2	SER	CA-C-N	6.58	131.68	117.20
1	A	225	PHE	CB-CG-CD2	-6.55	116.22	120.80
1	A	224	LYS	CB-CG-CD	6.55	128.62	111.60
1	A	76	LYS	O-C-N	-6.27	112.67	122.70
1	A	3	HIS	C-N-CA	6.26	137.35	121.70
1	A	74	GLN	CG-CD-OE1	-6.20	109.20	121.60
1	A	126	LYS	CD-CE-NZ	-6.12	97.61	111.70
1	A	53	GLN	CA-CB-CG	-6.07	100.06	113.40
1	A	55	THR	CA-CB-CG2	-5.96	104.05	112.40
1	A	64[A]	HIS	CG-ND1-CE1	-5.93	97.99	105.70
1	A	64[B]	HIS	CG-ND1-CE1	-5.93	97.99	105.70
1	A	129[A]	ASP	CA-CB-CG	-5.87	100.48	113.40
1	A	129[B]	ASP	CA-CB-CG	-5.87	100.48	113.40
1	A	114	TYR	CB-CG-CD1	5.86	124.51	121.00
1	A	227	LYS	CG-CD-CE	5.85	129.46	111.90
1	A	52	ASP	CB-CG-OD1	5.85	123.57	118.30
1	A	245	ARG	NE-CZ-NH1	5.81	123.21	120.30
1	A	34[A]	ASP	CB-CG-OD2	5.76	123.48	118.30
1	A	34[B]	ASP	CB-CG-OD2	5.76	123.48	118.30
1	A	167	LYS	CD-CE-NZ	-5.71	98.57	111.70
1	A	74	GLN	OE1-CD-NE2	5.65	134.89	121.90
1	A	2	SER	CA-CB-OG	-5.64	95.96	111.20
1	A	89	ARG	NH1-CZ-NH2	-5.61	113.23	119.40
1	A	236	PRO	CA-N-CD	-5.50	103.80	111.50
1	A	85[A]	ASP	CB-CG-OD2	5.40	123.16	118.30
1	A	85[B]	ASP	CB-CG-OD2	5.40	123.16	118.30
1	A	235	GLU	OE1-CD-OE2	-5.30	116.94	123.30
1	A	51	TYR	CB-CG-CD1	5.30	124.18	121.00
1	A	85[A]	ASP	N-CA-CB	5.30	120.13	110.60
1	A	85[B]	ASP	N-CA-CB	5.30	120.13	110.60
1	A	175	PHE	CB-CG-CD2	-5.14	117.20	120.80
1	A	232	GLY	O-C-N	5.12	130.90	122.70
1	A	19	ASP	OD1-CG-OD2	-5.12	113.58	123.30
1	A	76	LYS	CA-C-N	5.12	128.45	117.20
1	A	89	ARG	NE-CZ-NH2	5.11	122.86	120.30
1	A	8	GLY	O-C-N	-5.02	114.67	122.70
1	A	174	ASP	CB-CG-OD1	5.01	122.81	118.30
1	A	132	LYS	CA-CB-CG	5.00	124.41	113.40

There are no chirality outliers.

All (1) planarity outliers are listed below:

Mol	Chain	Res	Type	Group
1	A	2	SER	Peptide

5.2 Too-close contacts

In the following table, the Non-H and H(model) columns list the number of non-hydrogen atoms and hydrogen atoms in the chain respectively. The H(added) column lists the number of hydrogen atoms added and optimized by MolProbity. The Clashes column lists the number of clashes within the asymmetric unit, whereas Symm-Clashes lists symmetry related clashes.

Mol	Chain	Non-H	H(model)	H(added)	Clashes	Symm-Clashes
1	A	2120	0	4	8	0
2	A	1	0	0	0	0
3	A	1	0	0	0	0
4	A	20	0	0	1	0
5	A	18	0	6	2	0
6	A	18	0	23	4	0
7	A	338	0	0	5	0
All	All	2516	0	33	11	0

The all-atom clashscore is defined as the number of clashes found per 1000 atoms (including hydrogen atoms). The all-atom clashscore for this structure is 5.

All (11) close contacts within the same asymmetric unit are listed below, sorted by their clash magnitude.

Atom-1	Atom-2	Interatomic distance (Å)	Clash overlap (Å)
4:A:1205[B]:MBO:CE1	4:A:1205[B]:MBO:HG	1.91	0.77
6:A:1004:GOL:H2	7:A:2255:HOH:O	2.04	0.58
1:A:92:GLN:NE2	5:A:1002[A]:SUA:H91	2.23	0.54
1:A:112[B]:LYS:NZ	7:A:2228:HOH:O	2.45	0.49
1:A:80:LYS:NZ	7:A:2111:HOH:O	2.45	0.49
1:A:64[A]:HIS:CE1	7:A:2214:HOH:O	2.65	0.49
1:A:92:GLN:CG	5:A:1002[A]:SUA:H91	2.44	0.47
1:A:14:GLU:OE1	6:A:1004:GOL:H32	2.14	0.47
6:A:1004:GOL:C2	7:A:2255:HOH:O	2.61	0.47
1:A:164:ASP:OD1	1:A:164:ASP:N	2.48	0.46
1:A:94:HIS:CG	6:A:1003[B]:GOL:H2	2.55	0.41

There are no symmetry-related clashes.

5.3 Torsion angles [i](#)

5.3.1 Protein backbone [i](#)

In the following table, the Percentiles column shows the percent Ramachandran outliers of the chain as a percentile score with respect to all X-ray entries followed by that with respect to entries of similar resolution.

The Analysed column shows the number of residues for which the backbone conformation was analysed, and the total number of residues.

Mol	Chain	Analysed	Favoured	Allowed	Outliers	Percentiles
1	A	271/259 (105%)	259 (96%)	11 (4%)	1 (0%)	39 12

All (1) Ramachandran outliers are listed below:

Mol	Chain	Res	Type
1	A	3	HIS

5.3.2 Protein sidechains [i](#)

In the following table, the Percentiles column shows the percent sidechain outliers of the chain as a percentile score with respect to all X-ray entries followed by that with respect to entries of similar resolution.

The Analysed column shows the number of residues for which the sidechain conformation was analysed, and the total number of residues.

Mol	Chain	Analysed	Rotameric	Outliers	Percentiles
1	A	239/224 (107%)	230 (96%)	9 (4%)	40 6

All (9) residues with a non-rotameric sidechain are listed below:

Mol	Chain	Res	Type
1	A	3	HIS
1	A	52	ASP
1	A	64[A]	HIS
1	A	64[B]	HIS
1	A	74	GLN
1	A	92	GLN
1	A	164	ASP
1	A	260[A]	LYS
1	A	260[B]	LYS

Some sidechains can be flipped to improve hydrogen bonding and reduce clashes. There are no such sidechains identified.

5.3.3 RNA ⓘ

There are no RNA molecules in this entry.

5.4 Non-standard residues in protein, DNA, RNA chains ⓘ

There are no non-standard protein/DNA/RNA residues in this entry.

5.5 Carbohydrates ⓘ

There are no carbohydrates in this entry.

5.6 Ligand geometry ⓘ

Of 9 ligands modelled in this entry, 2 are monoatomic - leaving 7 for Mogul analysis.

In the following table, the Counts columns list the number of bonds (or angles) for which Mogul statistics could be retrieved, the number of bonds (or angles) that are observed in the model and the number of bonds (or angles) that are defined in the chemical component dictionary. The Link column lists molecule types, if any, to which the group is linked. The Z score for a bond length (or angle) is the number of standard deviations the observed value is removed from the expected value. A bond length (or angle) with $|Z| > 2$ is considered an outlier worth inspection. RMSZ is the root-mean-square of all Z scores of the bond lengths (or angles).

Mol	Type	Chain	Res	Link	Bond lengths			Bond angles		
					Counts	RMSZ	# Z > 2	Counts	RMSZ	# Z > 2
5	SUA	A	1002[A]	3	17,17,22	3.41	3 (17%)	23,23,30	5.75	9 (39%)
5	SUA	A	1002[B]	-	12,12,22	1.00	1 (8%)	17,17,30	1.32	3 (17%)
6	GOL	A	1003[A]	-	5,5,5	1.15	1 (20%)	5,5,5	2.55	2 (40%)
6	GOL	A	1003[B]	-	5,5,5	1.15	0	5,5,5	1.23	1 (20%)
6	GOL	A	1004	-	5,5,5	1.36	0	5,5,5	1.99	2 (40%)
4	MBO	A	1205[A]	1,7	4,10,10	1.68	1 (25%)	8,13,13	1.96	3 (37%)
4	MBO	A	1205[B]	1	4,10,10	2.19	2 (50%)	8,13,13	2.03	3 (37%)

In the following table, the Chirals column lists the number of chiral outliers, the number of chiral centers analysed, the number of these observed in the model and the number defined in the chemical component dictionary. Similar counts are reported in the Torsion and Rings columns. '-' means no outliers of that kind were identified.

Mol	Type	Chain	Res	Link	Chirals	Torsions	Rings
5	SUA	A	1002[A]	3	-	0/13/14/16	0/1/1/2
5	SUA	A	1002[B]	-	-	0/8/8/16	0/1/1/2
6	GOL	A	1003[A]	-	-	0/4/4/4	0/0/0/0
6	GOL	A	1003[B]	-	-	0/4/4/4	0/0/0/0
6	GOL	A	1004	-	-	0/4/4/4	0/0/0/0
4	MBO	A	1205[A]	1,7	-	0/0/4/4	0/1/1/1
4	MBO	A	1205[B]	1	-	0/0/4/4	0/1/1/1

All (8) bond length outliers are listed below:

Mol	Chain	Res	Type	Atoms	Z	Observed(Å)	Ideal(Å)
5	A	1002[A]	SUA	C7-N2	-8.48	1.26	1.34
5	A	1002[A]	SUA	C7-S2	-3.65	1.59	1.66
5	A	1002[B]	SUA	C7-N2	-2.81	1.40	1.45
4	A	1205[B]	MBO	CE3-CE4	2.18	1.44	1.39
6	A	1003[A]	GOL	O1-C1	2.24	1.52	1.42
4	A	1205[A]	MBO	CE3-CE2	2.87	1.43	1.38
4	A	1205[B]	MBO	CE6-CE5	3.68	1.45	1.38
5	A	1002[A]	SUA	O3-C7	10.19	1.46	1.33

All (23) bond angle outliers are listed below:

Mol	Chain	Res	Type	Atoms	Z	Observed(°)	Ideal(°)
5	A	1002[A]	SUA	O3-C7-S2	-12.46	116.21	125.06
5	A	1002[A]	SUA	S2-C7-N2	-6.69	105.97	123.40
5	A	1002[A]	SUA	C6-N2-C7	-4.25	123.28	130.04
4	A	1205[A]	MBO	CE6-CE5-CE4	-3.45	116.10	121.14
4	A	1205[B]	MBO	CE3-CE4-CZ	-3.01	116.40	120.45
6	A	1004	GOL	C3-C2-C1	-2.84	99.99	111.12
4	A	1205[B]	MBO	CE2-CE3-CE4	-2.58	117.38	121.14
5	A	1002[A]	SUA	O3-C8-C9	-2.38	100.16	108.96
4	A	1205[A]	MBO	CE5-CE4-CZ	-2.07	117.66	120.45
5	A	1002[A]	SUA	C1-C2-C3	2.07	121.77	119.48
5	A	1002[B]	SUA	C1-C2-C3	2.07	121.77	119.48
6	A	1003[B]	GOL	C3-C2-C1	2.16	119.58	111.12
4	A	1205[B]	MBO	CE5-CE6-CE1	2.33	126.52	121.68
5	A	1002[A]	SUA	O1-S1-N1	2.42	110.42	107.28
5	A	1002[B]	SUA	O1-S1-N1	2.42	110.42	107.28
5	A	1002[A]	SUA	O2-S1-N1	2.53	110.56	107.28
5	A	1002[B]	SUA	O2-S1-N1	2.53	110.56	107.28
6	A	1003[A]	GOL	O1-C1-C2	2.88	124.17	110.18
6	A	1004	GOL	O2-C2-C3	2.99	122.38	108.65
4	A	1205[A]	MBO	CE5-CE6-CE1	3.14	128.20	121.68

Continued on next page...

Continued from previous page...

Mol	Chain	Res	Type	Atoms	Z	Observed(°)	Ideal(°)
6	A	1003[A]	GOL	O2-C2-C1	4.62	129.82	108.65
5	A	1002[A]	SUA	O3-C7-N2	10.62	136.72	111.57
5	A	1002[A]	SUA	C8-O3-C7	19.83	135.85	119.09

There are no chirality outliers.

There are no torsion outliers.

There are no ring outliers.

4 monomers are involved in 7 short contacts:

Mol	Chain	Res	Type	Clashes	Symm-Clashes
5	A	1002[A]	SUA	2	0
6	A	1003[B]	GOL	1	0
6	A	1004	GOL	3	0
4	A	1205[B]	MBO	1	0

5.7 Other polymers [i](#)

There are no such residues in this entry.

5.8 Polymer linkage issues [i](#)

There are no chain breaks in this entry.

6 Fit of model and data ⓘ

6.1 Protein, DNA and RNA chains ⓘ

EDS was not executed - this section will therefore be empty.

6.2 Non-standard residues in protein, DNA, RNA chains ⓘ

EDS was not executed - this section will therefore be empty.

6.3 Carbohydrates ⓘ

EDS was not executed - this section will therefore be empty.

6.4 Ligands ⓘ

EDS was not executed - this section will therefore be empty.

6.5 Other polymers ⓘ

EDS was not executed - this section will therefore be empty.