



Full wwPDB X-ray Structure Validation Report ⓘ

Dec 12, 2016 – 11:40 PM EST

PDB ID : 5LUW
Title : X-ray structure of the complex between human alpha-thrombin and modified 15-mer DNA aptamer containing 5-(3-(2-(1H-indol-3-yl)acetamide-N-yl)-1-pr open-1-yl)-2'-deoxyuridine residue
Authors : Dolot, R.D.; Nawrot, B.; Yang, X.
Deposited on : 2016-09-12
Resolution : 1.69 Å(reported)

This is a Full wwPDB X-ray Structure Validation Report for a publicly released PDB entry.

We welcome your comments at validation@mail.wwpdb.org

A user guide is available at

<http://wwpdb.org/validation/2016/XrayValidationReportHelp>

with specific help available everywhere you see the ⓘ symbol.

The following versions of software and data (see [references ⓘ](#)) were used in the production of this report:

MolProbity	:	4.02b-467
Mogul	:	1.7.1 (RC1), CSD as537be (2016)
Xtriage (Phenix)	:	1.9-1692
EDS	:	rb-20028442
Percentile statistics	:	20151230.v01 (using entries in the PDB archive December 30th 2015)
Refmac	:	5.8.0135
CCP4	:	6.5.0
Ideal geometry (proteins)	:	Engh & Huber (2001)
Ideal geometry (DNA, RNA)	:	Parkinson et al. (1996)
Validation Pipeline (wwPDB-VP)	:	rb-20028442

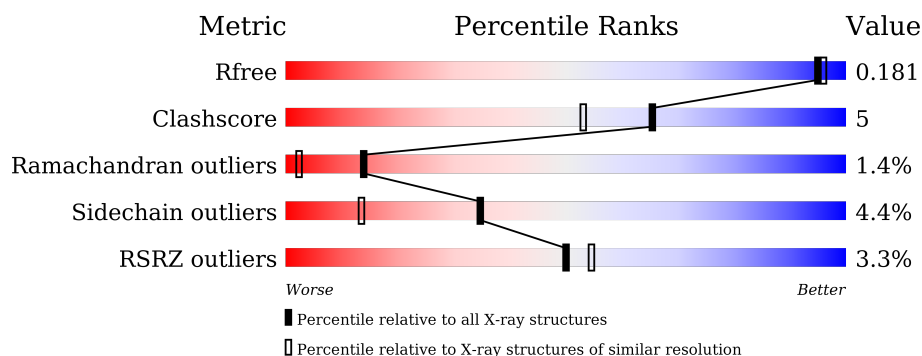
1 Overall quality at a glance

The following experimental techniques were used to determine the structure:

X-RAY DIFFRACTION

The reported resolution of this entry is 1.69 Å.

Percentile scores (ranging between 0-100) for global validation metrics of the entry are shown in the following graphic. The table shows the number of entries on which the scores are based.



Metric	Whole archive (#Entries)	Similar resolution (#Entries, resolution range(Å))
R_{free}	91344	3190 (1.70-1.70)
Clashscore	102246	3585 (1.70-1.70)
Ramachandran outliers	100387	3527 (1.70-1.70)
Sidechain outliers	100360	3527 (1.70-1.70)
RSRZ outliers	91569	3200 (1.70-1.70)

The table below summarises the geometric issues observed across the polymeric chains and their fit to the electron density. The red, orange, yellow and green segments on the lower bar indicate the fraction of residues that contain outliers for ≥ 3 , 2, 1 and 0 types of geometric quality criteria. A grey segment represents the fraction of residues that are not modelled. The numeric value for each fraction is indicated below the corresponding segment, with a dot representing fractions $\leq 5\%$. The upper red bar (where present) indicates the fraction of residues that have poor fit to the electron density. The numeric value is given above the bar.

Mol	Chain	Length	Quality of chain
1	D	15	<div> <div>7%</div> <div> <div></div> <div>60%</div> <div>33%</div> <div>7%</div> </div> </div>
2	L	36	<div> <div>3%</div> <div> <div></div> <div>67%</div> <div>11%</div> <div>•</div> <div>19%</div> </div> </div>
3	H	259	<div> <div>3%</div> <div> <div></div> <div>83%</div> <div>14%</div> <div>••</div> </div> </div>

The following table lists non-polymeric compounds, carbohydrate monomers and non-standard residues in protein, DNA, RNA chains that are outliers for geometric or electron-density-fit criteria:

Mol	Type	Chain	Res	Chirality	Geometry	Clashes	Electron density
4	K	D	501	-	-	-	X
7	NAG	H	703	-	-	-	X

2 Entry composition

There are 8 unique types of molecules in this entry. The entry contains 3230 atoms, of which 0 are hydrogens and 0 are deuteriums.

In the tables below, the ZeroOcc column contains the number of atoms modelled with zero occupancy, the AltConf column contains the number of residues with at least one atom in alternate conformation and the Trace column contains the number of residues modelled with at most 2 atoms.

- Molecule 1 is a DNA chain called GA63A - TBA modified aptamer.

Mol	Chain	Residues	Atoms					ZeroOcc	AltConf	Trace
1	D	15	Total	C	N	O	P	0	0	0
			330	162	59	95	14			

- Molecule 2 is a protein called Prothrombin.

Mol	Chain	Residues	Atoms					ZeroOcc	AltConf	Trace
2	L	29	Total	C	N	O	S	0	1	0
			248	155	40	52	1			

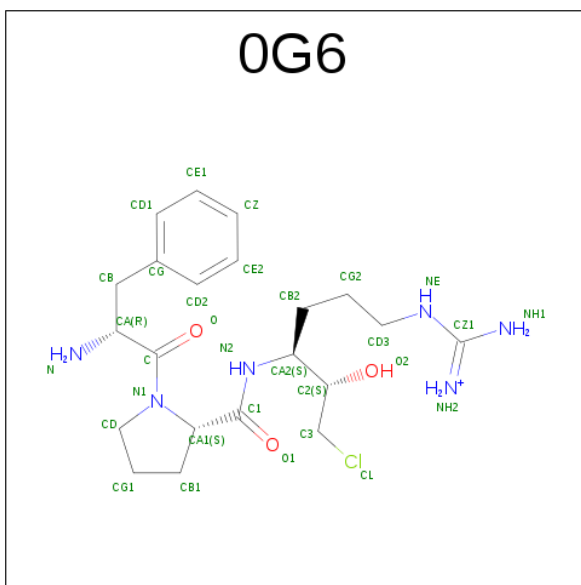
- Molecule 3 is a protein called Prothrombin.

Mol	Chain	Residues	Atoms					ZeroOcc	AltConf	Trace
3	H	259	Total	C	N	O	S	0	13	0
			2194	1399	386	395	14			

- Molecule 4 is POTASSIUM ION (three-letter code: K) (formula: K).

Mol	Chain	Residues	Atoms		ZeroOcc	AltConf
4	D	1	Total	K	0	0
			1	1		

- Molecule 5 is D-phenylalanyl-N-[(2S,3S)-6-{{[amino(iminio)methyl]amino}}-1-chloro-2-hydroxyhexan-3-yl]-L-prolinamide (three-letter code: 0G6) (formula: C₂₁H₃₄ClN₆O₃).

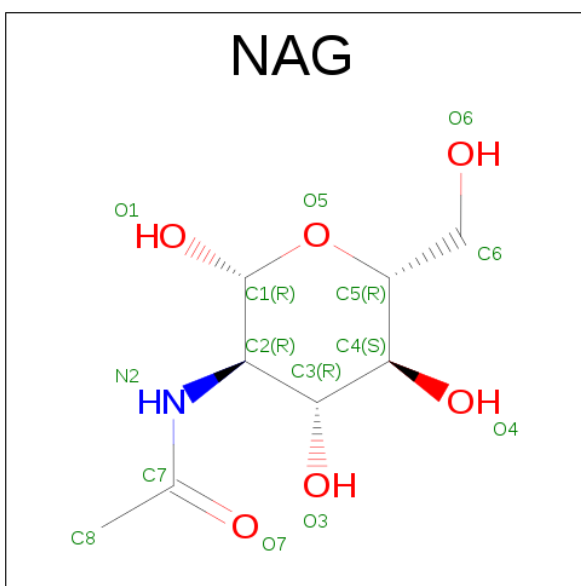


Mol	Chain	Residues	Atoms				ZeroOcc	AltConf
5	H	1	Total	C	N	O	0	0
			30	21	6	3		

- Molecule 6 is SODIUM ION (three-letter code: NA) (formula: Na).

Mol	Chain	Residues	Atoms		ZeroOcc	AltConf
6	H	1	Total	Na	0	0
			1	1		

- Molecule 7 is N-ACETYL-D-GLUCOSAMINE (three-letter code: NAG) (formula: C₈H₁₅NO₆).



Mol	Chain	Residues	Atoms				ZeroOcc	AltConf
7	H	1	Total	C	N	O	0	0
			14	8	1	5		

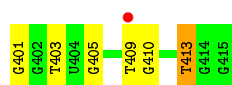
- Molecule 8 is water.

Mol	Chain	Residues	Atoms		ZeroOcc	AltConf
8	D	70	Total	O	0	0
			70	70		
8	L	43	Total	O	0	0
			43	43		
8	H	299	Total	O	0	0
			299	299		

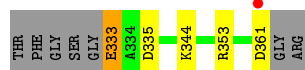
3 Residue-property plots [i](#)

These plots are drawn for all protein, RNA and DNA chains in the entry. The first graphic for a chain summarises the proportions of errors displayed in the second graphic. The second graphic shows the sequence view annotated by issues in geometry and electron density. Residues are color-coded according to the number of geometric quality criteria for which they contain at least one outlier: green = 0, yellow = 1, orange = 2 and red = 3 or more. A red dot above a residue indicates a poor fit to the electron density ($RSRZ > 2$). Stretches of 2 or more consecutive residues without any outlier are shown as a green connector. Residues present in the sample, but not in the model, are shown in grey.

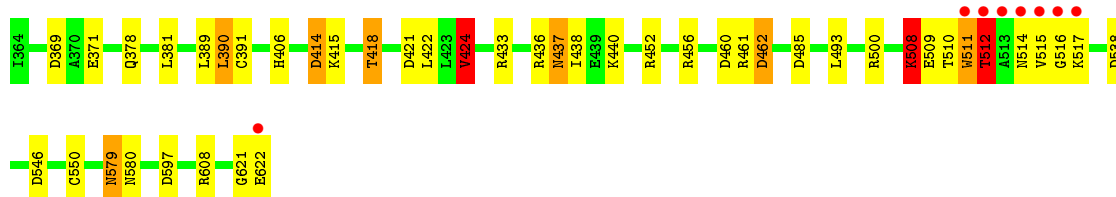
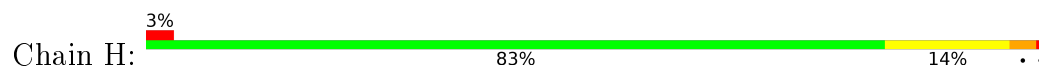
- Molecule 1: GA63A - TBA modified aptamer



- Molecule 2: Prothrombin



- Molecule 3: Prothrombin



4 Data and refinement statistics

Property	Value	Source
Space group	P 32 2 1	Depositor
Cell constants a, b, c, α , β , γ	94.09 Å 94.09 Å 124.71 Å 90.00° 90.00° 120.00°	Depositor
Resolution (Å)	81.49 – 1.69 68.22 – 1.69	Depositor EDS
% Data completeness (in resolution range)	99.5 (81.49-1.69) 99.5 (68.22-1.69)	Depositor EDS
R_{merge}	0.05	Depositor
R_{sym}	(Not available)	Depositor
$\langle I/\sigma(I) \rangle$ ¹	1.74 (at 1.69 Å)	Xtriage
Refinement program	REFMAC 5.8.0135	Depositor
R, R_{free}	0.146 , 0.169 0.159 , 0.181	Depositor DCC
R_{free} test set	3441 reflections (5.05%)	DCC
Wilson B-factor (Å ²)	23.5	Xtriage
Anisotropy	0.022	Xtriage
Bulk solvent k_{sol} (e/Å ³), B_{sol} (Å ²)	0.36 , 45.8	EDS
L-test for twinning ²	$\langle L \rangle = 0.49$, $\langle L^2 \rangle = 0.32$	Xtriage
Estimated twinning fraction	0.025 for -h,-k,l	Xtriage
F_o, F_c correlation	0.97	EDS
Total number of atoms	3230	wwPDB-VP
Average B, all atoms (Å ²)	31.0	wwPDB-VP

Xtriage's analysis on translational NCS is as follows: *The largest off-origin peak in the Patterson function is 5.83% of the height of the origin peak. No significant pseudotranslation is detected.*

¹Intensities estimated from amplitudes.

²Theoretical values of $\langle |L| \rangle$, $\langle L^2 \rangle$ for acentric reflections are 0.5, 0.333 respectively for untwinned datasets, and 0.375, 0.2 for perfectly twinned datasets.

5 Model quality

5.1 Standard geometry

Bond lengths and bond angles in the following residue types are not validated in this section: 0G6, NA, K, 77Y, NAG

The Z score for a bond length (or angle) is the number of standard deviations the observed value is removed from the expected value. A bond length (or angle) with $|Z| > 5$ is considered an outlier worth inspection. RMSZ is the root-mean-square of all Z scores of the bond lengths (or angles).

Mol	Chain	Bond lengths		Bond angles	
		RMSZ	# $ Z > 5$	RMSZ	# $ Z > 5$
1	D	1.30	2/330 (0.6%)	1.28	5/509 (1.0%)
2	L	1.42	2/250 (0.8%)	1.36	2/332 (0.6%)
3	H	1.35	6/2249 (0.3%)	1.40	33/3041 (1.1%)
All	All	1.35	10/2829 (0.4%)	1.38	40/3882 (1.0%)

Chiral center outliers are detected by calculating the chiral volume of a chiral center and verifying if the center is modelled as a planar moiety or with the opposite hand. A planarity outlier is detected by checking planarity of atoms in a peptide group, atoms in a mainchain group or atoms of a sidechain that are expected to be planar.

Mol	Chain	#Chirality outliers	#Planarity outliers
3	H	0	1

All (10) bond length outliers are listed below:

Mol	Chain	Res	Type	Atoms	Z	Observed(Å)	Ideal(Å)
3	H	437	ASN	N-CA	22.74	1.91	1.46
3	H	509	GLU	CB-CG	-7.85	1.37	1.52
3	H	414	ASP	CB-CG	-7.69	1.35	1.51
3	H	378	GLN	CD-NE2	-7.25	1.14	1.32
1	D	409	DT	O3'-P	-6.44	1.53	1.61
2	L	333	GLU	CD-OE2	6.20	1.32	1.25
3	H	371	GLU	CD-OE2	-6.02	1.19	1.25
3	H	436	ARG	C-N	-5.96	1.20	1.34
1	D	401	DG	O3'-P	-5.54	1.54	1.61
2	L	335	ASP	CA-CB	5.42	1.65	1.53

All (40) bond angle outliers are listed below:

Mol	Chain	Res	Type	Atoms	Z	Observed(°)	Ideal(°)
3	H	436	ARG	C-N-CA	-15.83	82.12	121.70
3	H	460	ASP	CB-CG-OD1	11.01	128.21	118.30
3	H	608	ARG	NE-CZ-NH1	10.36	125.48	120.30
3	H	452	ARG	NE-CZ-NH1	9.75	125.17	120.30
3	H	436	ARG	NE-CZ-NH2	-9.32	115.64	120.30
3	H	436	ARG	NE-CZ-NH1	9.02	124.81	120.30
3	H	369	ASP	CB-CG-OD1	8.86	126.28	118.30
3	H	485	ASP	CB-CG-OD1	8.32	125.79	118.30
3	H	436	ARG	O-C-N	-7.91	110.05	122.70
1	D	410	DG	O5'-P-OP2	7.67	119.91	110.70
3	H	456	ARG	NE-CZ-NH1	7.28	123.94	120.30
3	H	597	ASP	CB-CG-OD1	7.11	124.70	118.30
3	H	538	ASP	CB-CG-OD2	-6.93	112.07	118.30
3	H	461	ARG	NE-CZ-NH1	6.65	123.63	120.30
3	H	424	VAL	CA-CB-CG1	6.41	120.51	110.90
3	H	512	THR	N-CA-CB	6.38	122.42	110.30
3	H	414	ASP	CB-CG-OD2	-6.35	112.58	118.30
3	H	369	ASP	CB-CG-OD2	-6.33	112.61	118.30
3	H	512	THR	N-CA-C	-6.21	94.24	111.00
3	H	461	ARG	NE-CZ-NH2	-6.11	117.24	120.30
3	H	414	ASP	CB-CG-OD1	-6.03	112.87	118.30
3	H	452	ARG	NE-CZ-NH2	-5.97	117.31	120.30
3	H	508	LYS	CD-CE-NZ	5.83	125.11	111.70
3	H	436	ARG	CA-C-N	5.76	129.88	117.20
3	H	440	LYS	CD-CE-NZ	-5.74	98.49	111.70
3	H	546	ASP	CB-CG-OD1	5.74	123.47	118.30
1	D	409	DT	O5'-P-OP2	-5.71	100.56	105.70
3	H	378	GLN	CB-CG-CD	5.69	126.40	111.60
3	H	462	ASP	CB-CG-OD1	5.62	123.36	118.30
3	H	414	ASP	OD1-CG-OD2	5.52	133.78	123.30
3	H	485	ASP	CB-CG-OD2	-5.50	113.35	118.30
3	H	509	GLU	CG-CD-OE2	-5.45	107.41	118.30
2	L	335	ASP	N-CA-CB	5.42	120.35	110.60
3	H	433	ARG	NE-CZ-NH1	5.37	122.99	120.30
1	D	405	DG	O5'-P-OP2	5.28	117.04	110.70
1	D	403	DT	O5'-P-OP2	-5.27	100.96	105.70
3	H	422	LEU	CB-CA-C	-5.20	100.32	110.20
2	L	353	ARG	NE-CZ-NH1	5.16	122.88	120.30
3	H	500	ARG	NE-CZ-NH1	-5.12	117.74	120.30
1	D	413	DT	C4'-C3'-O3'	-5.09	96.98	109.70

There are no chirality outliers.

All (1) planarity outliers are listed below:

Mol	Chain	Res	Type	Group
3	H	511	TRP	Peptide

5.2 Too-close contacts ⓘ

In the following table, the Non-H and H(model) columns list the number of non-hydrogen atoms and hydrogen atoms in the chain respectively. The H(added) column lists the number of hydrogen atoms added and optimized by MolProbity. The Clashes column lists the number of clashes within the asymmetric unit, whereas Symm-Clashes lists symmetry related clashes.

Mol	Chain	Non-H	H(model)	H(added)	Clashes	Symm-Clashes
1	D	330	0	161	2	0
2	L	248	0	244	4	0
3	H	2194	0	2166	23	0
4	D	1	0	0	0	0
5	H	30	0	31	0	0
6	H	1	0	0	0	0
7	H	14	0	13	0	0
8	D	70	0	0	0	0
8	H	299	0	0	3	0
8	L	43	0	0	4	0
All	All	3230	0	2615	27	0

The all-atom clashscore is defined as the number of clashes found per 1000 atoms (including hydrogen atoms). The all-atom clashscore for this structure is 5.

All (27) close contacts within the same asymmetric unit are listed below, sorted by their clash magnitude.

Atom-1	Atom-2	Interatomic distance (Å)	Clash overlap (Å)
3:H:390[A]:LEU:C	3:H:390[A]:LEU:HD12	1.75	1.06
3:H:390[A]:LEU:O	3:H:390[A]:LEU:HD12	1.72	0.90
3:H:390[A]:LEU:HD13	8:H:858:HOH:O	1.72	0.87
2:L:361:ASP:O	8:L:401:HOH:O	2.00	0.79
3:H:390[A]:LEU:C	3:H:390[A]:LEU:CD1	2.52	0.78
3:H:390[A]:LEU:CD1	8:H:858:HOH:O	2.33	0.74
3:H:381[A]:LEU:HD23	3:H:390[A]:LEU:HG	1.71	0.71
2:L:333:GLU:CD	8:L:405:HOH:O	2.31	0.69
3:H:406:HIS:HD2	3:H:462:ASP:OD2	1.78	0.67
2:L:344[B]:LYS:NZ	8:L:402:HOH:O	2.28	0.66
1:D:413:DT:H5'	3:H:438[A]:ILE:HD11	1.77	0.65
3:H:390[A]:LEU:O	3:H:390[A]:LEU:CD1	2.44	0.65
3:H:381[A]:LEU:CD2	3:H:390[A]:LEU:HG	2.28	0.63

Continued on next page...

Continued from previous page...

Atom-1	Atom-2	Interatomic distance (Å)	Clash overlap (Å)
3:H:508:LYS:O	3:H:510:THR:HG23	2.02	0.59
3:H:510:THR:O	3:H:512:THR:HG23	2.02	0.59
3:H:389[B]:LEU:HD23	3:H:389[B]:LEU:C	2.24	0.58
3:H:511:TRP:HA	3:H:512:THR:HG23	1.86	0.57
1:D:413:DT:C6	3:H:438[B]:ILE:HD11	2.42	0.53
3:H:415:LYS:HE3	8:H:1042:HOH:O	2.08	0.53
3:H:579:ASN:C	3:H:579:ASN:HD22	2.14	0.51
2:L:333:GLU:HB2	8:L:405:HOH:O	2.11	0.50
3:H:621:GLY:O	3:H:622:GLU:HG2	2.12	0.49
3:H:381[A]:LEU:HG	3:H:390[A]:LEU:HG	1.97	0.46
3:H:390[A]:LEU:O	3:H:391:CYS:SG	2.75	0.44
3:H:381[A]:LEU:CG	3:H:390[A]:LEU:HG	2.46	0.44
3:H:381[B]:LEU:CD2	3:H:424:VAL:HG22	2.49	0.42
3:H:418[B]:THR:HG22	3:H:421:ASP:OD2	2.21	0.40

There are no symmetry-related clashes.

5.3 Torsion angles [i](#)

5.3.1 Protein backbone [i](#)

In the following table, the Percentiles column shows the percent Ramachandran outliers of the chain as a percentile score with respect to all X-ray entries followed by that with respect to entries of similar resolution.

The Analysed column shows the number of residues for which the backbone conformation was analysed, and the total number of residues.

Mol	Chain	Analysed	Favoured	Allowed	Outliers	Percentiles	
2	L	28/36 (78%)	26 (93%)	2 (7%)	0	100	100
3	H	270/259 (104%)	255 (94%)	11 (4%)	4 (2%)	13	2
All	All	298/295 (101%)	281 (94%)	13 (4%)	4 (1%)	14	2

All (4) Ramachandran outliers are listed below:

Mol	Chain	Res	Type
3	H	512	THR
3	H	514	ASN
3	H	515	VAL
3	H	516	GLY

5.3.2 Protein sidechains ⓘ

In the following table, the Percentiles column shows the percent sidechain outliers of the chain as a percentile score with respect to all X-ray entries followed by that with respect to entries of similar resolution.

The Analysed column shows the number of residues for which the sidechain conformation was analysed, and the total number of residues.

Mol	Chain	Analysed	Rotameric	Outliers	Percentiles	
2	L	28/31 (90%)	28 (100%)	0	100	100
3	H	238/225 (106%)	225 (94%)	13 (6%)	27	9
All	All	266/256 (104%)	253 (95%)	13 (5%)	35	11

All (13) residues with a non-rotameric sidechain are listed below:

Mol	Chain	Res	Type
3	H	390[A]	LEU
3	H	390[B]	LEU
3	H	414	ASP
3	H	418[A]	THR
3	H	418[B]	THR
3	H	424	VAL
3	H	437	ASN
3	H	493	LEU
3	H	508	LYS
3	H	517	LYS
3	H	550	CYS
3	H	579	ASN
3	H	580	ASN

Some sidechains can be flipped to improve hydrogen bonding and reduce clashes. All (5) such sidechains are listed below:

Mol	Chain	Res	Type
3	H	378	GLN
3	H	406	HIS
3	H	524	GLN
3	H	579	ASN
3	H	580	ASN

5.3.3 RNA ⓘ

There are no RNA molecules in this entry.

5.4 Non-standard residues in protein, DNA, RNA chains ⓘ

1 non-standard protein/DNA/RNA residue is modelled in this entry.

In the following table, the Counts columns list the number of bonds (or angles) for which Mogul statistics could be retrieved, the number of bonds (or angles) that are observed in the model and the number of bonds (or angles) that are defined in the chemical component dictionary. The Link column lists molecule types, if any, to which the group is linked. The Z score for a bond length (or angle) is the number of standard deviations the observed value is removed from the expected value. A bond length (or angle) with $|Z| > 2$ is considered an outlier worth inspection. RMSZ is the root-mean-square of all Z scores of the bond lengths (or angles).

Mol	Type	Chain	Res	Link	Bond lengths			Bond angles		
					Counts	RMSZ	# $ Z > 2$	Counts	RMSZ	# $ Z > 2$
1	77Y	D	404	1	29,38,39	1.48	5 (17%)	29,53,56	2.39	10 (34%)

In the following table, the Chirals column lists the number of chiral outliers, the number of chiral centers analysed, the number of these observed in the model and the number defined in the chemical component dictionary. Similar counts are reported in the Torsion and Rings columns. '-' means no outliers of that kind were identified.

Mol	Type	Chain	Res	Link	Chirals	Torsions	Rings
1	77Y	D	404	1	-	0/14/32/33	0/4/4/4

All (5) bond length outliers are listed below:

Mol	Chain	Res	Type	Atoms	Z	Observed(Å)	Ideal(Å)
1	D	404	77Y	C30-C13	-2.92	1.36	1.42
1	D	404	77Y	O3'-C3'	-2.42	1.38	1.43
1	D	404	77Y	C2-N3	-2.15	1.33	1.38
1	D	404	77Y	C16-C12	2.09	1.43	1.37
1	D	404	77Y	C2'-C1'	3.36	1.61	1.52

All (10) bond angle outliers are listed below:

Mol	Chain	Res	Type	Atoms	Z	Observed(°)	Ideal(°)
1	D	404	77Y	C27-C14-C13	-3.79	114.34	121.12
1	D	404	77Y	C28-C29-C30	-3.77	115.02	120.45
1	D	404	77Y	C3'-C2'-C1'	-3.63	93.59	102.40
1	D	404	77Y	C33-C32-N9	-3.18	111.76	116.09
1	D	404	77Y	O4'-C4'-C3'	-2.70	98.81	105.68
1	D	404	77Y	O3'-C3'-C2'	-2.24	103.20	110.74
1	D	404	77Y	C27-C14-N15	2.05	136.55	130.78
1	D	404	77Y	O34-C32-N9	3.45	129.81	122.96
1	D	404	77Y	C2'-C3'-C4'	3.52	109.91	102.77

Continued on next page...

Continued from previous page...

Mol	Chain	Res	Type	Atoms	Z	Observed(°)	Ideal(°)
1	D	404	77Y	C4-N3-C2	6.65	120.70	115.16

There are no chirality outliers.

There are no torsion outliers.

There are no ring outliers.

No monomer is involved in short contacts.

5.5 Carbohydrates [i](#)

There are no carbohydrates in this entry.

5.6 Ligand geometry [i](#)

Of 4 ligands modelled in this entry, 2 are monoatomic - leaving 2 for Mogul analysis.

In the following table, the Counts columns list the number of bonds (or angles) for which Mogul statistics could be retrieved, the number of bonds (or angles) that are observed in the model and the number of bonds (or angles) that are defined in the chemical component dictionary. The Link column lists molecule types, if any, to which the group is linked. The Z score for a bond length (or angle) is the number of standard deviations the observed value is removed from the expected value. A bond length (or angle) with $|Z| > 2$ is considered an outlier worth inspection. RMSZ is the root-mean-square of all Z scores of the bond lengths (or angles).

Mol	Type	Chain	Res	Link	Bond lengths			Bond angles		
					Counts	RMSZ	# Z > 2	Counts	RMSZ	# Z > 2
5	0G6	H	701	3	27,31,32	1.02	0	34,41,42	1.05	4 (11%)
7	NAG	H	703	3	14,14,15	2.54	3 (21%)	15,19,21	2.15	5 (33%)

In the following table, the Chirals column lists the number of chiral outliers, the number of chiral centers analysed, the number of these observed in the model and the number defined in the chemical component dictionary. Similar counts are reported in the Torsion and Rings columns. '-' means no outliers of that kind were identified.

Mol	Type	Chain	Res	Link	Chirals	Torsions	Rings
5	0G6	H	701	3	-	0/29/41/43	0/2/2/2
7	NAG	H	703	3	-	0/6/23/26	0/1/1/1

All (3) bond length outliers are listed below:

Mol	Chain	Res	Type	Atoms	Z	Observed(Å)	Ideal(Å)
7	H	703	NAG	O5-C1	-3.54	1.37	1.43
7	H	703	NAG	C4-C5	2.38	1.58	1.53
7	H	703	NAG	C1-C2	7.76	1.63	1.52

All (9) bond angle outliers are listed below:

Mol	Chain	Res	Type	Atoms	Z	Observed(°)	Ideal(°)
7	H	703	NAG	C4-C3-C2	-4.75	103.96	111.34
7	H	703	NAG	C2-N2-C7	-3.27	118.85	123.11
7	H	703	NAG	O6-C6-C5	-2.85	101.79	111.30
5	H	701	0G6	O2-C2-C3	-2.76	101.34	109.56
7	H	703	NAG	O4-C4-C3	-2.49	104.74	110.36
5	H	701	0G6	CA2-N2-C1	-2.21	119.00	123.15
5	H	701	0G6	CZ-CE1-CD1	-2.12	117.26	120.20
7	H	703	NAG	O4-C4-C5	2.30	115.29	109.23
5	H	701	0G6	CB1-CA1-N1	2.57	106.68	103.00

There are no chirality outliers.

There are no torsion outliers.

There are no ring outliers.

No monomer is involved in short contacts.

5.7 Other polymers [i](#)

There are no such residues in this entry.

5.8 Polymer linkage issues [i](#)

The following chains have linkage breaks:

Mol	Chain	Number of breaks
3	H	1

All chain breaks are listed below:

Model	Chain	Residue-1	Atom-1	Residue-2	Atom-2	Distance (Å)
1	H	436:ARG	C	437:ASN	N	1.20

6 Fit of model and data ⓘ

6.1 Protein, DNA and RNA chains ⓘ

In the following table, the column labelled ‘#RSRZ> 2’ contains the number (and percentage) of RSRZ outliers, followed by percent RSRZ outliers for the chain as percentile scores relative to all X-ray entries and entries of similar resolution. The OWAB column contains the minimum, median, 95th percentile and maximum values of the occupancy-weighted average B-factor per residue. The column labelled ‘Q< 0.9’ lists the number of (and percentage) of residues with an average occupancy less than 0.9.

Mol	Chain	Analysed	<RSRZ>	#RSRZ>2	OWAB(Å ²)	Q<0.9
1	D	14/15 (93%)	-0.59	1 (7%) 19 21	24, 29, 38, 83	0
2	L	29/36 (80%)	-0.30	1 (3%) 49 53	19, 26, 58, 79	0
3	H	259/259 (100%)	-0.37	8 (3%) 52 57	16, 23, 51, 121	0
All	All	302/310 (97%)	-0.38	10 (3%) 50 54	16, 24, 51, 121	0

All (10) RSRZ outliers are listed below:

Mol	Chain	Res	Type	RSRZ
3	H	515	VAL	6.7
3	H	512	THR	5.8
3	H	622	GLU	4.8
3	H	517	LYS	4.3
3	H	513	ALA	3.8
3	H	514	ASN	3.7
3	H	511	TRP	3.6
2	L	361	ASP	3.2
3	H	516	GLY	3.2
1	D	409	DT	2.0

6.2 Non-standard residues in protein, DNA, RNA chains ⓘ

In the following table, the Atoms column lists the number of modelled atoms in the group and the number defined in the chemical component dictionary. LLDF column lists the quality of electron density of the group with respect to its neighbouring residues in protein, DNA or RNA chains. The B-factors column lists the minimum, median, 95th percentile and maximum values of B factors of atoms in the group. The column labelled ‘Q< 0.9’ lists the number of atoms with occupancy less than 0.9.

Mol	Type	Chain	Res	Atoms	RSCC	RSR	LLDF	B-factors(Å ²)	Q<0.9
1	77Y	D	404	35/36	0.98	0.06	-	19,24,27,29	0

6.3 Carbohydrates [i](#)

There are no carbohydrates in this entry.

6.4 Ligands [i](#)

In the following table, the Atoms column lists the number of modelled atoms in the group and the number defined in the chemical component dictionary. LLDF column lists the quality of electron density of the group with respect to its neighbouring residues in protein, DNA or RNA chains. The B-factors column lists the minimum, median, 95th percentile and maximum values of B factors of atoms in the group. The column labelled 'Q< 0.9' lists the number of atoms with occupancy less than 0.9.

Mol	Type	Chain	Res	Atoms	RSCC	RSR	LLDF	B-factors(\AA^2)	Q<0.9
7	NAG	H	703	14/15	0.70	0.29	7.45	56,76,94,94	0
4	K	D	501	1/1	0.99	0.08	2.45	23,23,23,23	0
6	NA	H	702	1/1	1.00	0.07	0.04	19,19,19,19	0
5	0G6	H	701	30/31	0.98	0.07	-0.07	16,19,23,25	0

6.5 Other polymers [i](#)

There are no such residues in this entry.