



wwPDB X-ray Structure Validation Summary Report ⓘ

Feb 1, 2016 – 10:28 AM GMT

PDB ID : 3LX9
Title : Interconversion of Human Lysosomal Enzyme Specificities
Authors : Tomasic, I.B.; Metcalf, M.C.; Guce, A.I.; Clark, N.E.; Garman, S.C.
Deposited on : 2010-02-25
Resolution : 2.04 Å(reported)

This is a wwPDB X-ray Structure Validation Summary Report for a publicly released PDB entry.
We welcome your comments at validation@mail.wwpdb.org
A user guide is available at
<http://wwpdb.org/validation/2016/XrayValidationReportHelp>
with specific help available everywhere you see the ⓘ symbol.

The following versions of software and data (see [references ⓘ](#)) were used in the production of this report:

MolProbity : 4.02b-467
Mogul : 1.7 (RC4), CSD as536be (2015)
Xtriage (Phenix) : 1.9-1692
EDS : rb-20026688
Percentile statistics : 20151230.v01 (using entries in the PDB archive December 30th 2015)
Refmac : 5.8.0135
CCP4 : 6.5.0
Ideal geometry (proteins) : Engh & Huber (2001)
Ideal geometry (DNA, RNA) : Parkinson et al. (1996)
Validation Pipeline (wwPDB-VP) : trunk26865

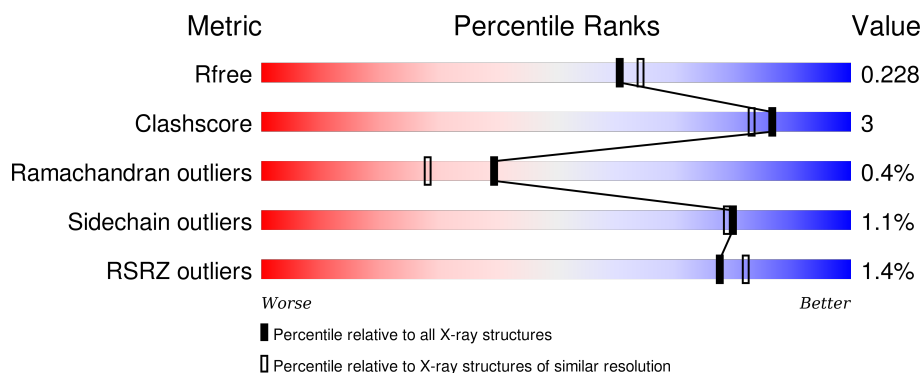
1 Overall quality at a glance ⓘ

The following experimental techniques were used to determine the structure:

X-RAY DIFFRACTION

The reported resolution of this entry is 2.04 Å.

Percentile scores (ranging between 0-100) for global validation metrics of the entry are shown in the following graphic. The table shows the number of entries on which the scores are based.



Metric	Whole archive (#Entries)	Similar resolution (#Entries, resolution range(Å))
R_{free}	91344	1192 (2.04-2.04)
Clashscore	102246	1269 (2.04-2.04)
Ramachandran outliers	100387	1258 (2.04-2.04)
Sidechain outliers	100360	1258 (2.04-2.04)
RSRZ outliers	91569	1194 (2.04-2.04)

The table below summarises the geometric issues observed across the polymeric chains and their fit to the electron density. The red, orange, yellow and green segments on the lower bar indicate the fraction of residues that contain outliers for ≥ 3 , 2, 1 and 0 types of geometric quality criteria. A grey segment represents the fraction of residues that are not modelled. The numeric value for each fraction is indicated below the corresponding segment, with a dot representing fractions $\leq 5\%$. The upper red bar (where present) indicates the fraction of residues that have poor fit to the electron density. The numeric value is given above the bar.

Mol	Chain	Length	Quality of chain
1	A	404	<div> <div>%</div> <div> <div></div> <div>90%</div> <div>6% . .</div> </div> </div>
1	B	404	<div> <div>%</div> <div> <div></div> <div>90%</div> <div>6% .</div> </div> </div>

2 Entry composition

There are 7 unique types of molecules in this entry. The entry contains 7057 atoms, of which 0 are hydrogens and 0 are deuteriums.

In the tables below, the ZeroOcc column contains the number of atoms modelled with zero occupancy, the AltConf column contains the number of residues with at least one atom in alternate conformation and the Trace column contains the number of residues modelled with at most 2 atoms.

- Molecule 1 is a protein called Alpha-galactosidase A.

Mol	Chain	Residues	Atoms					ZeroOcc	AltConf	Trace
1	A	391	Total	C	N	O	S	0	0	0
			3125	1988	536	575	26			
1	B	390	Total	C	N	O	S	0	0	0
			3116	1983	534	573	26			

There are 16 discrepancies between the modelled and reference sequences:

Chain	Residue	Modelled	Actual	Comment	Reference
A	203	SER	GLU	ENGINEERED	UNP P06280
A	206	ALA	LEU	ENGINEERED	UNP P06280
A	430	HIS	-	EXPRESSION TAG	UNP P06280
A	431	HIS	-	EXPRESSION TAG	UNP P06280
A	432	HIS	-	EXPRESSION TAG	UNP P06280
A	433	HIS	-	EXPRESSION TAG	UNP P06280
A	434	HIS	-	EXPRESSION TAG	UNP P06280
A	435	HIS	-	EXPRESSION TAG	UNP P06280
B	203	SER	GLU	ENGINEERED	UNP P06280
B	206	ALA	LEU	ENGINEERED	UNP P06280
B	430	HIS	-	EXPRESSION TAG	UNP P06280
B	431	HIS	-	EXPRESSION TAG	UNP P06280
B	432	HIS	-	EXPRESSION TAG	UNP P06280
B	433	HIS	-	EXPRESSION TAG	UNP P06280
B	434	HIS	-	EXPRESSION TAG	UNP P06280
B	435	HIS	-	EXPRESSION TAG	UNP P06280

- Molecule 2 is SUGAR (N-ACETYL-D-GLUCOSAMINE) (three-letter code: NAG) (formula: $C_8H_{15}NO_6$).



Mol	Chain	Residues	Atoms				ZeroOcc	AltConf
2	A	1	Total	C	N	O	0	0
			14	8	1	5		
2	B	1	Total	C	N	O	0	0
			14	8	1	5		

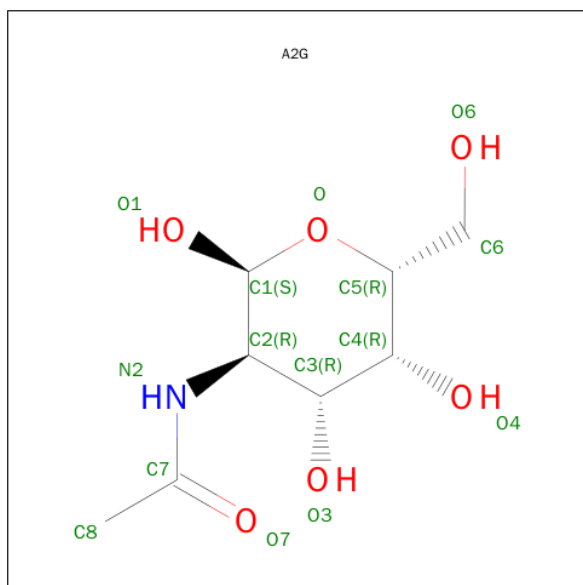
- Molecule 3 is a polymer of unknown type called SUGAR (4-MER).

Mol	Chain	Residues	Atoms				ZeroOcc	AltConf
3	A	4	Total	C	N	O	0	0
			50	28	2	20		
3	B	4	Total	C	N	O	0	0
			50	28	2	20		

- Molecule 4 is a polymer of unknown type called SUGAR (5-MER).

Mol	Chain	Residues	Atoms				ZeroOcc	AltConf
4	A	5	Total	C	N	O	0	0
			60	34	2	24		

- Molecule 5 is SUGAR (N-ACETYL-2-DEOXY-2-AMINO-GALACTOSE) (three-letter code: A2G) (formula: C₈H₁₅NO₆).



Mol	Chain	Residues	Atoms				ZeroOcc	AltConf
5	A	1	Total	C	N	O	0	0
			15	8	1	6		
5	B	1	Total	C	N	O	0	0
			15	8	1	6		

- Molecule 6 is a polymer of unknown type called SUGAR (3-MER).

Mol	Chain	Residues	Atoms				ZeroOcc	AltConf
6	B	3	Total	C	N	O	0	0
			39	22	2	15		

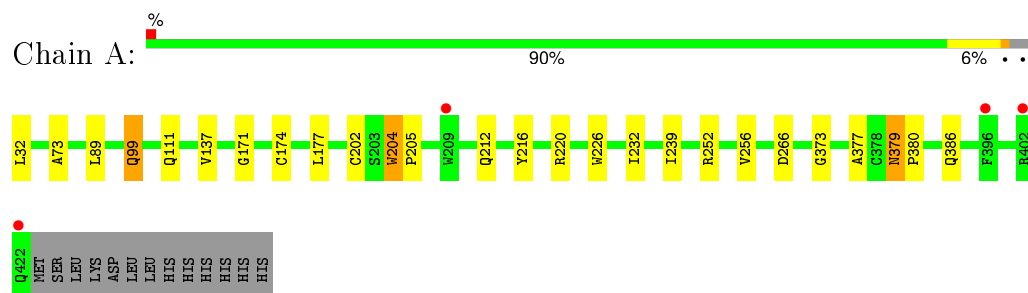
- Molecule 7 is water.

Mol	Chain	Residues	Atoms		ZeroOcc	AltConf
7	A	283	Total	O	0	0
			283	283		
7	B	276	Total	O	0	0
			276	276		

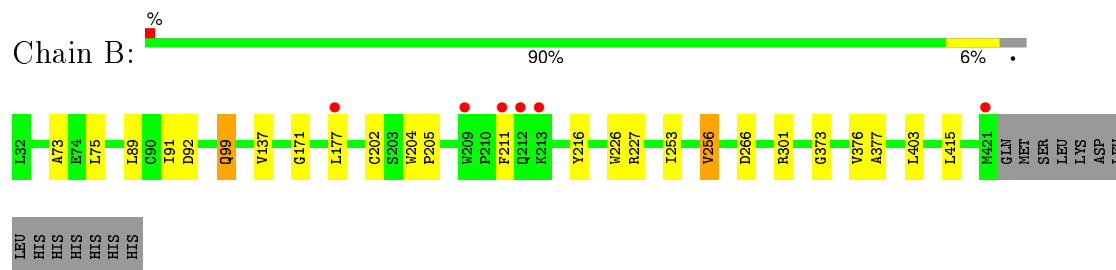
3 Residue-property plots

These plots are drawn for all protein, RNA and DNA chains in the entry. The first graphic for a chain summarises the proportions of errors displayed in the second graphic. The second graphic shows the sequence view annotated by issues in geometry and electron density. Residues are color-coded according to the number of geometric quality criteria for which they contain at least one outlier: green = 0, yellow = 1, orange = 2 and red = 3 or more. A red dot above a residue indicates a poor fit to the electron density ($\text{RSRZ} > 2$). Stretches of 2 or more consecutive residues without any outlier are shown as a green connector. Residues present in the sample, but not in the model, are shown in grey.

• Molecule 1: Alpha-galactosidase A



• Molecule 1: Alpha-galactosidase A



4 Data and refinement statistics

Property	Value	Source
Space group	C 2 2 21	Depositor
Cell constants a, b, c, α , β , γ	89.95Å 139.49Å 182.58Å 90.00° 90.00° 90.00°	Depositor
Resolution (Å)	43.69 – 2.04 43.67 – 2.04	Depositor EDS
% Data completeness (in resolution range)	98.9 (43.69-2.04) 98.9 (43.67-2.04)	Depositor EDS
R_{merge}	0.12	Depositor
R_{sym}	(Not available)	Depositor
$\langle I/\sigma(I) \rangle$ ¹	2.05 (at 2.05Å)	Xtriage
Refinement program	REFMAC 5.5.0070	Depositor
R, R_{free}	0.176 , 0.218 0.184 , 0.228	Depositor DCC
R_{free} test set	3623 reflections (5.30%)	DCC
Wilson B-factor (Å ²)	32.9	Xtriage
Anisotropy	0.138	Xtriage
Bulk solvent k_{sol} (e/Å ³), B_{sol} (Å ²)	0.36 , 40.4	EDS
Estimated twinning fraction	No twinning to report.	Xtriage
L-test for twinning ²	$\langle L \rangle = 0.50$, $\langle L^2 \rangle = 0.34$	Xtriage
Outliers	1 of 71962 reflections (0.001%)	Xtriage
F_o, F_c correlation	0.96	EDS
Total number of atoms	7057	wwPDB-VP
Average B, all atoms (Å ²)	37.0	wwPDB-VP

Xtriage's analysis on translational NCS is as follows: *The largest off-origin peak in the Patterson function is 3.78% of the height of the origin peak. No significant pseudotranslation is detected.*

¹Intensities estimated from amplitudes.

²Theoretical values of $\langle |L| \rangle$, $\langle L^2 \rangle$ for acentric reflections are 0.5, 0.375 respectively for untwinned datasets, and 0.333, 0.2 for perfectly twinned datasets.

5 Model quality

5.1 Standard geometry

Bond lengths and bond angles in the following residue types are not validated in this section: A2G, MAN, BMA, NAG, FUC

The Z score for a bond length (or angle) is the number of standard deviations the observed value is removed from the expected value. A bond length (or angle) with $|Z| > 5$ is considered an outlier worth inspection. RMSZ is the root-mean-square of all Z scores of the bond lengths (or angles).

Mol	Chain	Bond lengths		Bond angles	
		RMSZ	$\# Z > 5$	RMSZ	$\# Z > 5$
1	A	0.31	0/3212	0.51	0/4362
1	B	0.30	0/3203	0.50	0/4350
All	All	0.30	0/6415	0.50	0/8712

There are no bond length outliers.

There are no bond angle outliers.

There are no chirality outliers.

There are no planarity outliers.

5.2 Too-close contacts

In the following table, the Non-H and H(model) columns list the number of non-hydrogen atoms and hydrogen atoms in the chain respectively. The H(added) column lists the number of hydrogen atoms added and optimized by MolProbity. The Clashes column lists the number of clashes within the asymmetric unit, whereas Symm-Clashes lists symmetry related clashes.

Mol	Chain	Non-H	H(model)	H(added)	Clashes	Symm-Clashes
1	A	3125	0	2982	18	0
1	B	3116	0	2974	16	0
2	A	14	0	13	1	0
2	B	14	0	13	0	0
3	A	50	0	43	0	0
3	B	50	0	43	0	0
4	A	60	0	52	0	0
5	A	15	0	15	0	0
5	B	15	0	15	1	0
6	B	39	0	34	0	0
7	A	283	0	0	0	0

Continued on next page...

Continued from previous page...

Mol	Chain	Non-H	H(model)	H(added)	Clashes	Symm-Clashes
7	B	276	0	0	0	0
All	All	7057	0	6184	34	0

The all-atom clashscore is defined as the number of clashes found per 1000 atoms (including hydrogen atoms). The all-atom clashscore for this structure is 3.

The worst 5 of 34 close contacts within the same asymmetric unit are listed below, sorted by their clash magnitude.

Atom-1	Atom-2	Interatomic distance (Å)	Clash overlap (Å)
1:A:403:LEU:HD11	1:A:415:LEU:HD13	1.83	0.60
1:B:99:GLN:HA	1:B:99:GLN:HE21	1.70	0.57
1:A:216:TYR:HB3	1:A:256:VAL:HG21	1.86	0.57
1:A:386:GLN:HA	1:A:415:LEU:HD23	1.88	0.56
1:A:403:LEU:HD11	1:A:415:LEU:CD1	2.36	0.55

There are no symmetry-related clashes.

5.3 Torsion angles [i](#)

5.3.1 Protein backbone [i](#)

In the following table, the Percentiles column shows the percent Ramachandran outliers of the chain as a percentile score with respect to all X-ray entries followed by that with respect to entries of similar resolution.

The Analysed column shows the number of residues for which the backbone conformation was analysed, and the total number of residues.

Mol	Chain	Analysed	Favoured	Allowed	Outliers	Percentiles	
1	A	389/404 (96%)	377 (97%)	10 (3%)	2 (0%)	34	22
1	B	388/404 (96%)	377 (97%)	10 (3%)	1 (0%)	46	36
All	All	777/808 (96%)	754 (97%)	20 (3%)	3 (0%)	39	28

All (3) Ramachandran outliers are listed below:

Mol	Chain	Res	Type
1	A	266	ASP
1	B	266	ASP
1	A	204	TRP

5.3.2 Protein sidechains ⓘ

In the following table, the Percentiles column shows the percent sidechain outliers of the chain as a percentile score with respect to all X-ray entries followed by that with respect to entries of similar resolution.

The Analysed column shows the number of residues for which the sidechain conformation was analysed, and the total number of residues.

Mol	Chain	Analysed	Rotameric	Outliers	Percentiles	
1	A	331/344 (96%)	326 (98%)	5 (2%)	72	70
1	B	330/344 (96%)	328 (99%)	2 (1%)	90	90
All	All	661/688 (96%)	654 (99%)	7 (1%)	80	79

5 of 7 residues with a non-rotameric sidechain are listed below:

Mol	Chain	Res	Type
1	A	379	ASN
1	B	256	VAL
1	A	403	LEU
1	A	111	GLN
1	B	99	GLN

Some sidechains can be flipped to improve hydrogen bonding and reduce clashes. 5 of 12 such sidechains are listed below:

Mol	Chain	Res	Type
1	A	306	GLN
1	A	330	GLN
1	A	379	ASN
1	A	221	GLN
1	A	336	ASN

5.3.3 RNA ⓘ

There are no RNA molecules in this entry.

5.4 Non-standard residues in protein, DNA, RNA chains ⓘ

There are no non-standard protein/DNA/RNA residues in this entry.

5.5 Carbohydrates ⓘ

16 carbohydrates are modelled in this entry.

In the following table, the Counts columns list the number of bonds (or angles) for which Mogul statistics could be retrieved, the number of bonds (or angles) that are observed in the model and the number of bonds (or angles) that are defined in the chemical component dictionary. The Link column lists molecule types, if any, to which the group is linked. The Z score for a bond length (or angle) is the number of standard deviations the observed value is removed from the expected value. A bond length (or angle) with $|Z| > 2$ is considered an outlier worth inspection. RMSZ is the root-mean-square of all Z scores of the bond lengths (or angles).

Mol	Type	Chain	Res	Link	Bond lengths			Bond angles		
					Counts	RMSZ	$\# Z > 2$	Counts	RMSZ	$\# Z > 2$
3	NAG	A	692	1,3	14,14,15	0.50	0	15,19,21	0.62	0
3	NAG	A	693	3	14,14,15	0.52	0	15,19,21	0.70	0
3	BMA	A	694	3	11,11,12	0.28	0	14,15,17	0.75	0
3	MAN	A	695	3	11,11,12	0.61	0	14,15,17	0.96	0
4	NAG	A	715	1,4	14,14,15	0.40	0	15,19,21	0.98	1 (6%)
4	NAG	A	716	4	14,14,15	0.48	0	15,19,21	0.66	0
4	BMA	A	717	4	11,11,12	0.29	0	14,15,17	0.72	0
4	MAN	A	718	4	11,11,12	0.64	0	14,15,17	1.43	2 (14%)
4	FUC	A	720	4	10,10,11	0.57	0	14,14,16	1.04	1 (7%)
6	NAG	B	639	1,6	14,14,15	0.47	0	15,19,21	0.66	0
6	NAG	B	640	6	14,14,15	0.48	0	15,19,21	0.72	0
6	BMA	B	641	6	11,11,12	0.25	0	14,15,17	0.71	0
3	NAG	B	692	1,3	14,14,15	0.57	0	15,19,21	0.68	0
3	NAG	B	693	3	14,14,15	0.50	0	15,19,21	0.72	0
3	BMA	B	694	3	11,11,12	0.33	0	14,15,17	0.82	0
3	MAN	B	695	3	11,11,12	0.59	0	14,15,17	0.75	0

In the following table, the Chirals column lists the number of chiral outliers, the number of chiral centers analysed, the number of these observed in the model and the number defined in the chemical component dictionary. Similar counts are reported in the Torsion and Rings columns. '-' means no outliers of that kind were identified.

Mol	Type	Chain	Res	Link	Chirals	Torsions	Rings
3	NAG	A	692	1,3	-	0/6/23/26	0/1/1/1
3	NAG	A	693	3	-	0/6/23/26	0/1/1/1
3	BMA	A	694	3	-	0/2/19/22	0/1/1/1
3	MAN	A	695	3	-	0/2/19/22	0/1/1/1
4	NAG	A	715	1,4	-	0/6/23/26	0/1/1/1
4	NAG	A	716	4	-	0/6/23/26	0/1/1/1
4	BMA	A	717	4	-	0/2/19/22	0/1/1/1
4	MAN	A	718	4	-	0/2/19/22	0/1/1/1

Continued on next page...

Continued from previous page...

Mol	Type	Chain	Res	Link	Chirals	Torsions	Rings
4	FUC	A	720	4	-	0/0/17/20	0/1/1/1
6	NAG	B	639	1,6	-	0/6/23/26	0/1/1/1
6	NAG	B	640	6	-	0/6/23/26	0/1/1/1
6	BMA	B	641	6	-	0/2/19/22	0/1/1/1
3	NAG	B	692	1,3	-	0/6/23/26	0/1/1/1
3	NAG	B	693	3	-	0/6/23/26	0/1/1/1
3	BMA	B	694	3	-	0/2/19/22	0/1/1/1
3	MAN	B	695	3	-	0/2/19/22	0/1/1/1

There are no bond length outliers.

All (4) bond angle outliers are listed below:

Mol	Chain	Res	Type	Atoms	Z	Observed(°)	Ideal(°)
4	A	715	NAG	C1-O5-C5	2.19	115.03	112.25
4	A	720	FUC	C1-O5-C5	2.29	115.91	112.38
4	A	718	MAN	C1-O5-C5	2.39	115.29	112.25
4	A	718	MAN	C3-C4-C5	3.55	116.39	110.20

There are no chirality outliers.

There are no torsion outliers.

There are no ring outliers.

No monomer is involved in short contacts.

5.6 Ligand geometry ⓘ

4 ligands are modelled in this entry.

In the following table, the Counts columns list the number of bonds (or angles) for which Mogul statistics could be retrieved, the number of bonds (or angles) that are observed in the model and the number of bonds (or angles) that are defined in the chemical component dictionary. The Link column lists molecule types, if any, to which the group is linked. The Z score for a bond length (or angle) is the number of standard deviations the observed value is removed from the expected value. A bond length (or angle) with $|Z| > 2$ is considered an outlier worth inspection. RMSZ is the root-mean-square of all Z scores of the bond lengths (or angles).

Mol	Type	Chain	Res	Link	Bond lengths			Bond angles		
					Counts	RMSZ	$\# Z > 2$	Counts	RMSZ	$\# Z > 2$
5	A2G	A	1000	-	15,15,15	0.46	0	17,21,21	1.31	2 (11%)
2	NAG	A	639	1	14,14,15	0.44	0	15,19,21	1.15	1 (6%)
5	A2G	B	2000	-	15,15,15	0.38	0	17,21,21	1.46	2 (11%)

Mol	Type	Chain	Res	Link	Bond lengths			Bond angles		
					Counts	RMSZ	# Z > 2	Counts	RMSZ	# Z > 2
2	NAG	B	715	1	14,14,15	0.46	0	15,19,21	0.97	1 (6%)

In the following table, the Chirals column lists the number of chiral outliers, the number of chiral centers analysed, the number of these observed in the model and the number defined in the chemical component dictionary. Similar counts are reported in the Torsion and Rings columns. '-' means no outliers of that kind were identified.

Mol	Type	Chain	Res	Link	Chirals	Torsions	Rings
5	A2G	A	1000	-	-	0/6/26/26	0/1/1/1
2	NAG	A	639	1	-	0/6/23/26	0/1/1/1
5	A2G	B	2000	-	-	0/6/26/26	0/1/1/1
2	NAG	B	715	1	-	0/6/23/26	0/1/1/1

There are no bond length outliers.

The worst 5 of 6 bond angle outliers are listed below:

Mol	Chain	Res	Type	Atoms	Z	Observed(°)	Ideal(°)
5	A	1000	A2G	C4-C3-C2	-2.46	107.02	110.43
5	B	2000	A2G	C3-C2-N2	2.40	115.64	110.66
2	B	715	NAG	C1-O5-C5	3.20	116.31	112.25
5	A	1000	A2G	O1-C1-O	3.31	119.29	110.25
2	A	639	NAG	C1-O5-C5	3.72	116.97	112.25

There are no chirality outliers.

There are no torsion outliers.

There are no ring outliers.

2 monomers are involved in 2 short contacts:

Mol	Chain	Res	Type	Clashes	Symm-Clashes
2	A	639	NAG	1	0
5	B	2000	A2G	1	0

5.7 Other polymers [i](#)

There are no such residues in this entry.

5.8 Polymer linkage issues [i](#)

There are no chain breaks in this entry.

6 Fit of model and data [i](#)

6.1 Protein, DNA and RNA chains [i](#)

In the following table, the column labelled ‘#RSRZ> 2’ contains the number (and percentage) of RSRZ outliers, followed by percent RSRZ outliers for the chain as percentile scores relative to all X-ray entries and entries of similar resolution. The OWAB column contains the minimum, median, 95th percentile and maximum values of the occupancy-weighted average B-factor per residue. The column labelled ‘Q< 0.9’ lists the number of (and percentage) of residues with an average occupancy less than 0.9.

Mol	Chain	Analysed	<RSRZ>	#RSRZ>2	OWAB(Å ²)	Q<0.9
1	A	391/404 (96%)	-0.36	5 (1%) 79 83	23, 33, 54, 99	0
1	B	390/404 (96%)	-0.42	6 (1%) 76 81	20, 33, 56, 86	0
All	All	781/808 (96%)	-0.39	11 (1%) 78 82	20, 33, 56, 99	0

The worst 5 of 11 RSRZ outliers are listed below:

Mol	Chain	Res	Type	RSRZ
1	A	422	GLN	4.1
1	A	421	MET	4.0
1	A	209	TRP	3.8
1	B	211	PHE	3.0
1	B	209	TRP	2.8

6.2 Non-standard residues in protein, DNA, RNA chains [i](#)

There are no non-standard protein/DNA/RNA residues in this entry.

6.3 Carbohydrates [i](#)

In the following table, the Atoms column lists the number of modelled atoms in the group and the number defined in the chemical component dictionary. LLDF column lists the quality of electron density of the group with respect to its neighbouring residues in protein, DNA or RNA chains. The B-factors column lists the minimum, median, 95th percentile and maximum values of B factors of atoms in the group. The column labelled ‘Q< 0.9’ lists the number of atoms with occupancy less than 0.9.

Mol	Type	Chain	Res	Atoms	RSCC	RSR	LLDF	B-factors(Å ²)	Q<0.9
6	NAG	B	639	14/15	0.85	0.17	1.33	37,63,75,78	0
4	NAG	A	715	14/15	0.92	0.11	0.34	35,44,52,57	0
3	NAG	A	692	14/15	0.95	0.09	0.16	34,41,47,51	0

Continued on next page...

Continued from previous page...

Mol	Type	Chain	Res	Atoms	RSCC	RSR	LLDF	B-factors(\AA^2)	Q<0.9
3	NAG	B	692	14/15	0.96	0.08	-0.31	34,39,49,60	0
3	BMA	B	694	11/12	0.83	0.22	-	48,65,78,78	0
3	BMA	A	694	11/12	0.87	0.11	-	59,76,85,86	0
3	NAG	A	693	14/15	0.89	0.12	-	39,57,62,73	0
4	FUC	A	720	10/11	0.92	0.17	-	39,52,56,58	0
6	BMA	B	641	11/12	0.74	0.38	-	91,104,107,111	0
4	MAN	A	718	11/12	0.86	0.37	-	86,105,113,117	0
6	NAG	B	640	14/15	0.92	0.33	-	58,87,99,110	0
4	NAG	A	716	14/15	0.92	0.17	-	38,46,59,71	0
4	BMA	A	717	11/12	0.93	0.22	-	73,88,92,92	0
3	MAN	A	695	11/12	0.81	0.13	-	69,74,79,79	0
3	MAN	B	695	11/12	0.86	0.21	-	57,67,75,76	0
3	NAG	B	693	14/15	0.94	0.11	-	43,56,65,68	0

6.4 Ligands [i](#)

In the following table, the Atoms column lists the number of modelled atoms in the group and the number defined in the chemical component dictionary. LLDF column lists the quality of electron density of the group with respect to its neighbouring residues in protein, DNA or RNA chains. The B-factors column lists the minimum, median, 95th percentile and maximum values of B factors of atoms in the group. The column labelled 'Q< 0.9' lists the number of atoms with occupancy less than 0.9.

Mol	Type	Chain	Res	Atoms	RSCC	RSR	LLDF	B-factors(\AA^2)	Q<0.9
2	NAG	A	639	14/15	0.90	0.16	1.38	46,58,64,66	0
5	A2G	B	2000	15/15	0.97	0.12	0.10	19,27,35,43	0
5	A2G	A	1000	15/15	0.95	0.07	-0.75	20,27,39,39	0
2	NAG	B	715	14/15	0.71	0.31	-	64,88,100,103	0

6.5 Other polymers [i](#)

There are no such residues in this entry.