



Full wwPDB X-ray Structure Validation Report ⓘ

Jan 31, 2016 – 08:47 PM GMT

PDB ID : 1LZZ
Title : Rat neuronal NOS heme domain with N-isopropyl-N'-hydroxyguanidine bound
Authors : Li, H.; Shimizu, H.; Flinspach, M.; Jamal, J.; Yang, W.; Xian, M.; Cai, T.; Wen, E.Z.; Jia, Q.; Wang, P.G.; Poulos, T.L.
Deposited on : 2002-06-11
Resolution : 2.05 Å(reported)

This is a Full wwPDB X-ray Structure Validation Report for a publicly released PDB entry.
We welcome your comments at validation@mail.wwpdb.org
A user guide is available at
<http://wwpdb.org/validation/2016/XrayValidationReportHelp>
with specific help available everywhere you see the ⓘ symbol.

The following versions of software and data (see [references ⓘ](#)) were used in the production of this report:

MolProbity : 4.02b-467
Mogul : 1.7 (RC4), CSD as536be (2015)
Xtriage (Phenix) : 1.9-1692
EDS : rb-20026688
Percentile statistics : 20151230.v01 (using entries in the PDB archive December 30th 2015)
Refmac : 5.8.0135
CCP4 : 6.5.0
Ideal geometry (proteins) : Engh & Huber (2001)
Ideal geometry (DNA, RNA) : Parkinson et al. (1996)
Validation Pipeline (wwPDB-VP) : trunk26865

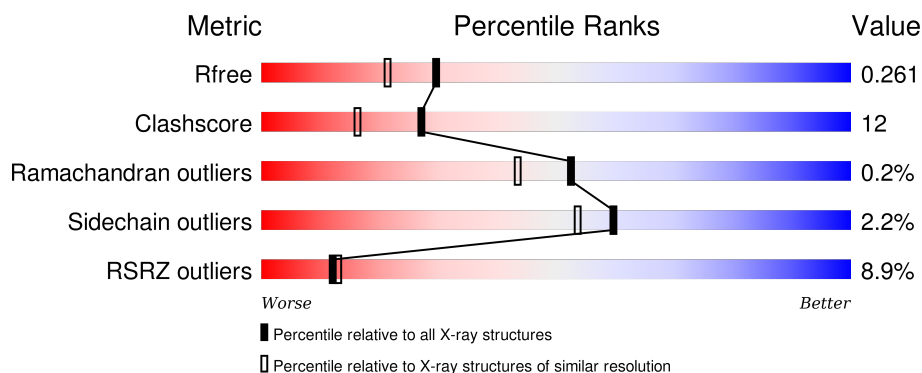
1 Overall quality at a glance

The following experimental techniques were used to determine the structure:

X-RAY DIFFRACTION

The reported resolution of this entry is 2.05 Å.

Percentile scores (ranging between 0-100) for global validation metrics of the entry are shown in the following graphic. The table shows the number of entries on which the scores are based.



Metric	Whole archive (#Entries)	Similar resolution (#Entries, resolution range(Å))
R_{free}	91344	1192 (2.04-2.04)
Clashscore	102246	1269 (2.04-2.04)
Ramachandran outliers	100387	1258 (2.04-2.04)
Sidechain outliers	100360	1258 (2.04-2.04)
RSRZ outliers	91569	1194 (2.04-2.04)

The table below summarises the geometric issues observed across the polymeric chains and their fit to the electron density. The red, orange, yellow and green segments on the lower bar indicate the fraction of residues that contain outliers for ≥ 3 , 2, 1 and 0 types of geometric quality criteria. A grey segment represents the fraction of residues that are not modelled. The numeric value for each fraction is indicated below the corresponding segment, with a dot representing fractions $\leq 5\%$. The upper red bar (where present) indicates the fraction of residues that have poor fit to the electron density. The numeric value is given above the bar.

Mol	Chain	Length	Quality of chain
1	A	419	<div> <div>14%</div> <div>67%</div> <div>28%</div> <div>••</div> </div>
1	B	419	<div> <div>4%</div> <div>78%</div> <div>20%</div> <div>••</div> </div>

The following table lists non-polymeric compounds, carbohydrate monomers and non-standard residues in protein, DNA, RNA chains that are outliers for geometric or electron-density-fit criteria:

Mol	Type	Chain	Res	Chirality	Geometry	Clashes	Electron density
2	ACT	A	860	-	-	-	X
2	ACT	B	1860	-	-	-	X

2 Entry composition [i](#)

There are 7 unique types of molecules in this entry. The entry contains 7309 atoms, of which 0 are hydrogens and 0 are deuteriums.

In the tables below, the ZeroOcc column contains the number of atoms modelled with zero occupancy, the AltConf column contains the number of residues with at least one atom in alternate conformation and the Trace column contains the number of residues modelled with at most 2 atoms.

- Molecule 1 is a protein called Nitric-oxide synthase.

Mol	Chain	Residues	Atoms					ZeroOcc	AltConf	Trace
1	A	407	Total	C	N	O	S	0	0	0
			3313	2121	566	605	21			
1	B	410	Total	C	N	O	S	0	0	0
			3340	2138	573	608	21			

- Molecule 2 is ACETATE ION (three-letter code: ACT) (formula: $C_2H_3O_2$).

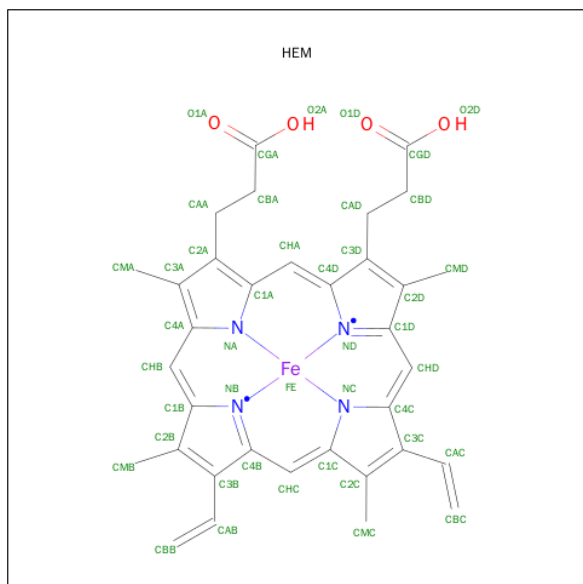


Mol	Chain	Residues	Atoms			ZeroOcc	AltConf
2	A	1	Total	C	O	0	0
			4	2	2		
2	B	1	Total	C	O	0	0
			4	2	2		

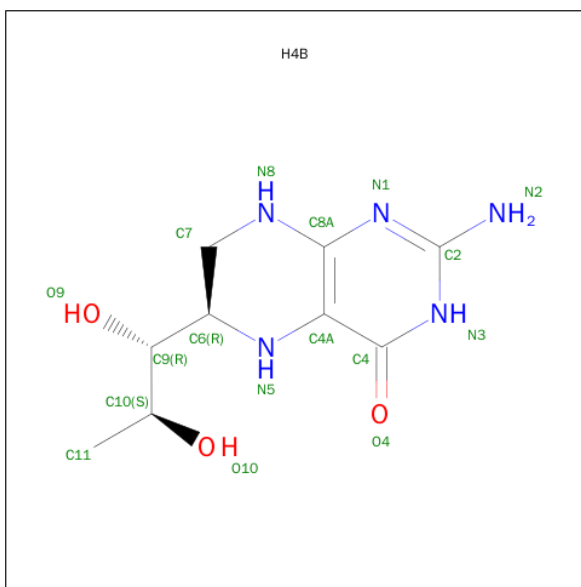
- Molecule 3 is ZINC ION (three-letter code: ZN) (formula: Zn).

Mol	Chain	Residues	Atoms		ZeroOcc	AltConf
3	A	1	Total	Zn	0	0
			1	1		

- Molecule 4 is PROTOPORPHYRIN IX CONTAINING FE (three-letter code: HEM) (formula: $C_{34}H_{32}FeN_4O_4$).

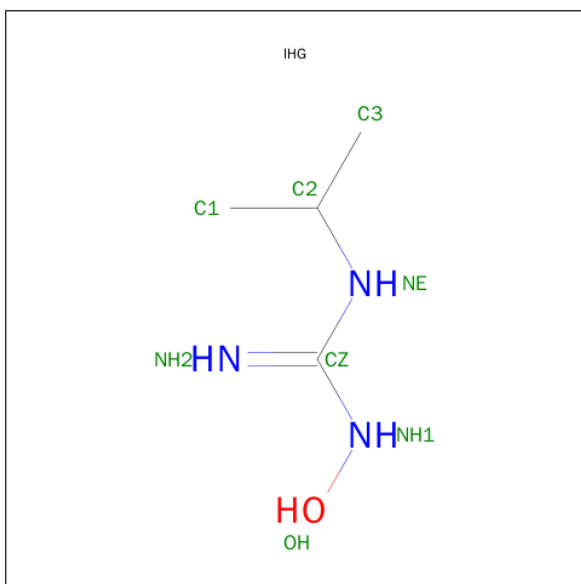


Mol	Chain	Residues	Atoms					ZeroOcc	AltConf
4	A	1	Total 43	C 34	Fe 1	N 4	O 4	0	0
4	B	1	Total 43	C 34	Fe 1	N 4	O 4	0	0



Mol	Chain	Residues	Atoms				ZeroOcc	AltConf
5	A	1	Total	C	N	O	0	0
			17	9	5	3		
5	B	1	Total	C	N	O	0	0
			17	9	5	3		

- Molecule 6 is N-ISOPROPYL-N'-HYDROXYGUANIDINE (three-letter code: IHG) (formula: C₄H₁₁N₃O).



Mol	Chain	Residues	Atoms				ZeroOcc	AltConf
6	A	1	Total	C	N	O	0	0
			8	4	3	1		

Continued on next page...

Continued from previous page...

Mol	Chain	Residues	Atoms				ZeroOcc	AltConf
6	B	1	Total	C	N	O	0	0
			8	4	3	1		

- Molecule 7 is water.

Mol	Chain	Residues	Atoms		ZeroOcc	AltConf
7	A	217	Total	O	0	0
			217	217		
7	B	294	Total	O	0	0
			294	294		

4 Data and refinement statistics

Property	Value	Source
Space group	P 21 21 21	Depositor
Cell constants a, b, c, α , β , γ	52.02Å 111.11Å 163.78Å 90.00° 90.00° 90.00°	Depositor
Resolution (Å)	38.42 – 2.05 38.42 – 2.05	Depositor EDS
% Data completeness (in resolution range)	97.4 (38.42-2.05) 97.5 (38.42-2.05)	Depositor EDS
R_{merge}	0.07	Depositor
R_{sym}	0.07	Depositor
$\langle I/\sigma(I) \rangle$ ¹	1.98 (at 2.05Å)	Xtriage
Refinement program	CNS 1.1	Depositor
R, R_{free}	0.226 , 0.266 0.223 , 0.261	Depositor DCC
R_{free} test set	2936 reflections (5.24%)	DCC
Wilson B-factor (Å ²)	27.9	Xtriage
Anisotropy	0.618	Xtriage
Bulk solvent k_{sol} (e/Å ³), B_{sol} (Å ²)	0.37 , 50.9	EDS
Estimated twinning fraction	No twinning to report.	Xtriage
L-test for twinning ²	$\langle L \rangle = 0.50$, $\langle L^2 \rangle = 0.33$	Xtriage
Outliers	0 of 59007 reflections	Xtriage
F_o, F_c correlation	0.94	EDS
Total number of atoms	7309	wwPDB-VP
Average B, all atoms (Å ²)	36.0	wwPDB-VP

Xtriage's analysis on translational NCS is as follows: *The largest off-origin peak in the Patterson function is 4.36% of the height of the origin peak. No significant pseudotranslation is detected.*

¹Intensities estimated from amplitudes.

²Theoretical values of $\langle |L| \rangle$, $\langle L^2 \rangle$ for acentric reflections are 0.5, 0.375 respectively for untwinned datasets, and 0.333, 0.2 for perfectly twinned datasets.

5 Model quality [i](#)

5.1 Standard geometry [i](#)

Bond lengths and bond angles in the following residue types are not validated in this section: HEM, ZN, IHG, H4B, ACT

The Z score for a bond length (or angle) is the number of standard deviations the observed value is removed from the expected value. A bond length (or angle) with $|Z| > 5$ is considered an outlier worth inspection. RMSZ is the root-mean-square of all Z scores of the bond lengths (or angles).

Mol	Chain	Bond lengths		Bond angles	
		RMSZ	$\# Z > 5$	RMSZ	$\# Z > 5$
1	A	0.33	0/3406	0.58	1/4621 (0.0%)
1	B	0.34	0/3433	0.60	2/4656 (0.0%)
All	All	0.33	0/6839	0.59	3/9277 (0.0%)

There are no bond length outliers.

All (3) bond angle outliers are listed below:

Mol	Chain	Res	Type	Atoms	Z	Observed(°)	Ideal(°)
1	B	326	CYS	CA-CB-SG	7.08	126.74	114.00
1	B	589	MET	N-CA-C	-6.04	94.69	111.00
1	A	589	MET	N-CA-C	-6.00	94.81	111.00

There are no chirality outliers.

There are no planarity outliers.

5.2 Too-close contacts [i](#)

In the following table, the Non-H and H(model) columns list the number of non-hydrogen atoms and hydrogen atoms in the chain respectively. The H(added) column lists the number of hydrogen atoms added and optimized by MolProbity. The Clashes column lists the number of clashes within the asymmetric unit, whereas Symm-Clashes lists symmetry related clashes.

Mol	Chain	Non-H	H(model)	H(added)	Clashes	Symm-Clashes
1	A	3313	0	3221	99	0
1	B	3340	0	3256	63	0
2	A	4	0	3	0	0
2	B	4	0	3	0	0
3	A	1	0	0	0	0
4	A	43	0	30	2	0

Continued on next page...

Continued from previous page...

Mol	Chain	Non-H	H(model)	H(added)	Clashes	Symm-Clashes
4	B	43	0	30	2	0
5	A	17	0	15	0	0
5	B	17	0	15	0	0
6	A	8	0	11	0	0
6	B	8	0	11	0	0
7	A	217	0	0	7	0
7	B	294	0	0	6	0
All	All	7309	0	6595	160	0

The all-atom clashscore is defined as the number of clashes found per 1000 atoms (including hydrogen atoms). The all-atom clashscore for this structure is 12.

All (160) close contacts within the same asymmetric unit are listed below, sorted by their clash magnitude.

Atom-1	Atom-2	Interatomic distance (Å)	Clash overlap (Å)
1:B:523:LEU:HD22	1:B:531:PRO:HB2	1.51	0.91
1:A:523:LEU:HD22	1:A:531:PRO:HB2	1.55	0.87
1:B:373:GLY:H	1:B:377:HIS:HD2	1.25	0.85
1:B:350:THR:HB	1:B:353:GLN:OE1	1.82	0.79
1:B:684:SER:HB3	1:B:687:ILE:HD11	1.68	0.74
1:A:473:ARG:NH2	1:A:710:PRO:HD3	2.03	0.74
1:B:595:VAL:HG23	1:B:634:ASN:HD21	1.56	0.70
1:B:336:MET:HB3	1:B:337:LEU:HD23	1.73	0.69
1:A:620:LYS:HE3	1:A:622:SER:OG	1.93	0.69
1:A:545:PRO:HG2	1:A:547:ARG:NH1	2.08	0.68
1:A:595:VAL:HG11	1:A:682:PRO:HB2	1.77	0.66
1:B:382:GLU:HG3	7:B:2087:HOH:O	1.95	0.65
1:B:337:LEU:N	1:B:337:LEU:HD23	2.12	0.65
1:A:350:THR:HB	1:A:353:GLN:HG3	1.77	0.65
1:B:478:GLN:HB2	1:B:481:ARG:HG3	1.79	0.64
1:A:475:TRP:HB2	1:A:523:LEU:HB3	1.81	0.63
1:A:307:GLU:HG3	7:B:1925:HOH:O	1.98	0.63
1:B:323:GLU:O	1:B:699:ARG:HD3	1.99	0.63
1:A:545:PRO:HG2	1:A:547:ARG:HH11	1.62	0.62
1:B:513:PRO:HG2	1:B:518:ASP:CG	2.19	0.62
1:A:470:HIS:HB3	1:A:527:ASN:ND2	2.15	0.60
1:A:684:SER:HB3	1:A:687:ILE:HD11	1.84	0.60
1:A:516:ARG:HG2	1:A:517:PHE:CE1	2.37	0.59
1:A:478:GLN:HB2	1:A:481:ARG:HG3	1.84	0.59
1:A:350:THR:HG22	1:A:352:ASP:H	1.68	0.58
1:B:304:LYS:O	1:B:694:GLU:HG3	2.03	0.58

Continued on next page...

Continued from previous page...

Atom-1	Atom-2	Interatomic distance (Å)	Clash overlap (Å)
1:A:551:PHE:HE1	1:A:614:MET:HE3	1.69	0.57
1:B:455:LEU:HD12	1:B:587:TRP:HB3	1.87	0.57
1:B:684:SER:HB3	1:B:687:ILE:CD1	2.33	0.57
1:B:355:PHE:CE1	1:B:385:ASN:HB2	2.40	0.57
4:B:750:HEM:HMC1	4:B:750:HEM:HBC2	1.86	0.57
1:B:684:SER:HB3	1:B:687:ILE:CG1	2.36	0.56
1:B:391:THR:O	1:B:392:SER:HB2	2.05	0.56
1:A:627:ASP:O	1:A:631:VAL:HG23	2.05	0.56
1:A:595:VAL:HG23	1:A:634:ASN:HD21	1.71	0.55
1:A:621:THR:HG22	7:A:1062:HOH:O	2.05	0.55
1:A:610:VAL:HG21	1:A:633:ILE:HD11	1.87	0.55
1:A:407:HIS:CE1	1:A:410:ARG:HH11	2.25	0.55
1:B:638:LEU:O	1:B:642:GLN:HG3	2.07	0.55
1:A:322:LEU:HD13	1:A:699:ARG:NH2	2.23	0.54
1:A:350:THR:HB	1:A:353:GLN:CG	2.38	0.54
1:B:355:PHE:N	1:B:356:PRO:HD2	2.22	0.54
1:A:589:MET:HA	1:A:649:VAL:O	2.08	0.54
1:A:596:ARG:O	1:A:600:ASP:HB2	2.08	0.53
1:A:486:LYS:NZ	1:A:499:VAL:HG11	2.24	0.53
1:A:504:ILE:O	1:A:508:GLN:HB2	2.09	0.53
1:B:504:ILE:O	1:B:508:GLN:HG2	2.09	0.53
1:B:350:THR:HG22	1:B:352:ASP:H	1.74	0.53
1:A:614:MET:CE	1:A:632:GLU:HG3	2.39	0.53
1:A:684:SER:HB3	1:A:687:ILE:CD1	2.39	0.52
1:A:478:GLN:HB2	1:A:481:ARG:CG	2.39	0.52
1:B:499:VAL:O	1:B:503:GLU:HG3	2.10	0.52
1:A:366:TYR:HA	1:A:369:ILE:HG12	1.92	0.52
1:B:478:GLN:HB2	1:B:481:ARG:CG	2.40	0.52
1:B:475:TRP:HB2	1:B:523:LEU:HB3	1.91	0.52
1:B:608:GLU:HG3	7:B:2080:HOH:O	2.10	0.52
1:A:548:HIS:ND1	1:A:549:PRO:HD2	2.25	0.51
1:A:684:SER:O	1:A:687:ILE:HG12	2.10	0.51
1:B:455:LEU:HD12	1:B:587:TRP:CB	2.41	0.51
1:A:682:PRO:HG3	7:A:902:HOH:O	2.09	0.51
1:B:701:THR:HA	1:B:702:PRO:C	2.31	0.51
1:A:715:VAL:O	1:A:715:VAL:HG23	2.11	0.51
1:A:361:PHE:O	1:A:364:GLN:HG2	2.11	0.50
1:B:470:HIS:HB3	1:B:527:ASN:ND2	2.26	0.50
4:A:750:HEM:HMC2	4:A:750:HEM:HBC2	1.93	0.50
1:B:373:GLY:H	1:B:377:HIS:CD2	2.16	0.50
1:A:485:TYR:CE2	1:A:512:ALA:HB1	2.46	0.50

Continued on next page...

Continued from previous page...

Atom-1	Atom-2	Interatomic distance (Å)	Clash overlap (Å)
1:A:621:THR:HG23	7:A:1064:HOH:O	2.12	0.50
1:B:659:ILE:O	1:B:663:GLU:HG3	2.12	0.50
1:A:510:TRP:HZ2	7:A:977:HOH:O	1.95	0.49
1:A:659:ILE:O	1:A:663:GLU:HG3	2.12	0.49
1:A:675:ASP:O	1:A:679:ILE:HG12	2.12	0.49
1:A:353:GLN:O	1:A:356:PRO:HG2	2.12	0.49
1:A:374:SER:O	1:A:378:MET:HG2	2.12	0.49
1:A:355:PHE:N	1:A:356:PRO:HD2	2.28	0.49
1:B:571:LEU:HD13	1:B:580:SER:HA	1.93	0.49
1:B:352:ASP:HA	7:B:2143:HOH:O	2.13	0.49
1:A:467:ASP:OD1	1:A:469:LYS:HB2	2.13	0.49
4:B:750:HEM:HBC2	4:B:750:HEM:CMC	2.43	0.48
1:A:455:LEU:HD12	1:A:587:TRP:HB3	1.95	0.48
1:A:350:THR:HG22	1:A:352:ASP:N	2.27	0.48
1:A:299:ARG:HG3	1:A:318:LEU:HD21	1.96	0.48
1:B:336:MET:HB3	1:B:337:LEU:CD2	2.43	0.48
1:B:351:LYS:HE2	1:B:392:SER:OG	2.14	0.48
1:A:638:LEU:O	1:A:642:GLN:HG3	2.13	0.48
1:B:462:PHE:HB3	1:B:463:PRO:CD	2.44	0.48
1:A:551:PHE:HB3	1:A:553:TRP:CE2	2.49	0.47
1:A:524:LEU:O	1:A:531:PRO:HA	2.15	0.47
1:B:462:PHE:HB3	1:B:463:PRO:HD2	1.96	0.47
1:B:699:ARG:HG2	7:B:2048:HOH:O	2.13	0.47
1:A:684:SER:HB3	1:A:687:ILE:HG12	1.97	0.47
1:B:485:TYR:CZ	1:B:514:ARG:HA	2.50	0.47
1:A:462:PHE:HB3	1:A:463:PRO:CD	2.45	0.46
1:A:551:PHE:HB3	1:A:553:TRP:NE1	2.30	0.46
1:B:362:LEU:HD11	1:B:384:VAL:HG21	1.97	0.46
1:B:388:ILE:O	1:B:392:SER:N	2.38	0.46
1:A:483:ALA:HB2	1:A:520:LEU:CD2	2.45	0.46
1:A:566:ALA:HB2	1:A:585:SER:HB3	1.98	0.46
1:A:684:SER:HB3	1:A:687:ILE:CG1	2.46	0.46
1:B:566:ALA:HB2	1:B:585:SER:HB3	1.99	0.45
1:B:595:VAL:HG23	1:B:634:ASN:ND2	2.29	0.45
1:A:335:ILE:HD13	1:B:694:GLU:HB3	1.99	0.45
1:A:694:GLU:HB3	1:B:335:ILE:HD13	1.99	0.45
1:A:322:LEU:HB3	1:A:699:ARG:NH1	2.31	0.45
1:A:323:GLU:O	1:A:699:ARG:HD3	2.16	0.44
1:A:709:ASP:HB2	1:A:712:ASN:ND2	2.32	0.44
1:B:525:GLN:HG3	1:B:529:ASN:O	2.16	0.44
1:A:475:TRP:CE2	1:A:710:PRO:HB2	2.53	0.44

Continued on next page...

Continued from previous page...

Atom-1	Atom-2	Interatomic distance (Å)	Clash overlap (Å)
1:B:387:GLU:OE2	1:B:394:TYR:HA	2.18	0.44
1:A:512:ALA:HA	1:A:513:PRO:HD3	1.85	0.44
1:A:462:PHE:HB3	1:A:463:PRO:HD2	1.99	0.44
1:B:364:GLN:NE2	7:B:2112:HOH:O	2.50	0.44
1:A:423:LYS:HB3	7:A:1065:HOH:O	2.17	0.44
1:B:546:ILE:HG12	1:B:560:LYS:HA	2.00	0.43
1:A:610:VAL:O	1:A:614:MET:HG3	2.18	0.43
1:A:387:GLU:OE2	1:A:394:TYR:HA	2.18	0.43
1:A:551:PHE:CE1	1:A:614:MET:HE3	2.53	0.43
1:A:614:MET:HE3	1:A:632:GLU:HG3	1.99	0.43
1:A:604:TYR:O	1:A:605:ASN:C	2.57	0.43
1:A:549:PRO:HB3	1:A:639:TYR:CD1	2.54	0.43
1:A:415:CYS:HB2	4:A:750:HEM:ND	2.33	0.43
1:A:494:GLY:O	1:A:496:PRO:HD3	2.19	0.43
1:A:300:PHE:CD1	1:A:300:PHE:N	2.87	0.43
1:A:630:LEU:HD22	1:B:687:ILE:HD13	2.00	0.43
1:B:596:ARG:O	1:B:600:ASP:HB2	2.19	0.43
1:A:701:THR:HA	1:A:702:PRO:C	2.39	0.43
1:B:684:SER:CB	1:B:687:ILE:HD11	2.44	0.43
1:A:388:ILE:O	1:A:392:SER:N	2.48	0.43
1:A:549:PRO:HB3	1:A:639:TYR:CE1	2.54	0.42
1:A:502:THR:O	1:A:506:ILE:HG12	2.18	0.42
1:A:455:LEU:HD12	1:A:587:TRP:CB	2.49	0.42
1:A:391:THR:O	1:A:392:SER:OG	2.32	0.42
1:B:409:TRP:CE3	1:B:421:TRP:HA	2.54	0.42
1:B:614:MET:CE	1:B:632:GLU:HG3	2.50	0.42
1:A:306:TRP:CD2	1:B:336:MET:HE3	2.54	0.42
1:B:473:ARG:NH2	1:B:710:PRO:HD3	2.34	0.42
1:B:589:MET:HA	1:B:649:VAL:O	2.20	0.42
1:B:337:LEU:N	1:B:337:LEU:CD2	2.80	0.42
1:A:350:THR:HB	1:A:353:GLN:CD	2.40	0.42
1:A:303:VAL:CG1	1:A:694:GLU:O	2.67	0.42
1:A:336:MET:HE2	1:B:306:TRP:CD2	2.55	0.42
1:A:610:VAL:HG21	1:A:633:ILE:CD1	2.50	0.41
1:A:384:VAL:O	1:A:388:ILE:HG13	2.20	0.41
1:A:546:ILE:HG22	1:A:554:PHE:HE2	1.85	0.41
1:A:554:PHE:HB3	7:A:953:HOH:O	2.19	0.41
1:A:464:GLN:HB3	1:A:579:PHE:CE2	2.56	0.41
1:B:610:VAL:HG21	1:B:633:ILE:HD11	2.02	0.41
1:A:686:SER:HA	1:A:691:PHE:CG	2.55	0.41
1:A:588:TYR:CD1	1:A:593:ILE:HD11	2.55	0.41

Continued on next page...

Continued from previous page...

Atom-1	Atom-2	Interatomic distance (Å)	Clash overlap (Å)
1:B:608:GLU:O	1:B:611:ALA:HB3	2.21	0.41
1:A:522:LEU:O	1:A:533:LEU:HA	2.21	0.41
1:B:680:VAL:HA	1:B:681:PRO:HD3	1.93	0.40
1:A:537:PRO:HB2	1:A:540:LEU:HG	2.02	0.40
1:A:552:ASP:O	1:A:555:LYS:HG2	2.21	0.40
1:A:549:PRO:O	1:A:550:LYS:HG3	2.21	0.40
1:A:449:ALA:O	1:A:455:LEU:HA	2.22	0.40
1:A:634:ASN:HB3	7:A:1044:HOH:O	2.21	0.40
1:B:523:LEU:HA	1:B:523:LEU:HD23	1.91	0.40
1:B:322:LEU:HD13	1:B:699:ARG:NH2	2.36	0.40
1:A:463:PRO:HB2	1:A:472:PHE:CE1	2.57	0.40

There are no symmetry-related clashes.

5.3 Torsion angles [i](#)

5.3.1 Protein backbone [i](#)

In the following table, the Percentiles column shows the percent Ramachandran outliers of the chain as a percentile score with respect to all X-ray entries followed by that with respect to entries of similar resolution.

The Analysed column shows the number of residues for which the backbone conformation was analysed, and the total number of residues.

Mol	Chain	Analysed	Favoured	Allowed	Outliers	Percentiles	
1	A	403/419 (96%)	375 (93%)	26 (6%)	2 (0%)	34	22
1	B	406/419 (97%)	390 (96%)	16 (4%)	0	100	100
All	All	809/838 (96%)	765 (95%)	42 (5%)	2 (0%)	52	43

All (2) Ramachandran outliers are listed below:

Mol	Chain	Res	Type
1	A	605	ASN
1	A	550	LYS

5.3.2 Protein sidechains ⓘ

In the following table, the Percentiles column shows the percent sidechain outliers of the chain as a percentile score with respect to all X-ray entries followed by that with respect to entries of similar resolution.

The Analysed column shows the number of residues for which the sidechain conformation was analysed, and the total number of residues.

Mol	Chain	Analysed	Rotameric	Outliers	Percentiles	
1	A	363/375 (97%)	353 (97%)	10 (3%)	51	44
1	B	366/375 (98%)	360 (98%)	6 (2%)	70	67
All	All	729/750 (97%)	713 (98%)	16 (2%)	60	53

All (16) residues with a non-rotameric sidechain are listed below:

Mol	Chain	Res	Type
1	A	316	LEU
1	A	454	ASN
1	A	485	TYR
1	A	493	LEU
1	A	523	LEU
1	A	527	ASN
1	A	547	ARG
1	A	552	ASP
1	A	555	LYS
1	A	600	ASP
1	B	316	LEU
1	B	337	LEU
1	B	423	LYS
1	B	523	LEU
1	B	547	ARG
1	B	697	ASN

Some sidechains can be flipped to improve hydrogen bonding and reduce clashes. All (21) such sidechains are listed below:

Mol	Chain	Res	Type
1	A	407	HIS
1	A	425	GLN
1	A	451	ASN
1	A	454	ASN
1	A	500	GLN
1	A	527	ASN

Continued on next page...

Continued from previous page...

Mol	Chain	Res	Type
1	A	634	ASN
1	A	697	ASN
1	A	712	ASN
1	B	364	GLN
1	B	377	HIS
1	B	407	HIS
1	B	440	ASN
1	B	451	ASN
1	B	454	ASN
1	B	507	GLN
1	B	527	ASN
1	B	535	GLN
1	B	634	ASN
1	B	664	ASN
1	B	697	ASN

5.3.3 RNA [i](#)

There are no RNA molecules in this entry.

5.4 Non-standard residues in protein, DNA, RNA chains [i](#)

There are no non-standard protein/DNA/RNA residues in this entry.

5.5 Carbohydrates [i](#)

There are no carbohydrates in this entry.

5.6 Ligand geometry [i](#)

Of 9 ligands modelled in this entry, 1 is monoatomic - leaving 8 for Mogul analysis.

In the following table, the Counts columns list the number of bonds (or angles) for which Mogul statistics could be retrieved, the number of bonds (or angles) that are observed in the model and the number of bonds (or angles) that are defined in the chemical component dictionary. The Link column lists molecule types, if any, to which the group is linked. The Z score for a bond length (or angle) is the number of standard deviations the observed value is removed from the expected value. A bond length (or angle) with $|Z| > 2$ is considered an outlier worth inspection. RMSZ is the root-mean-square of all Z scores of the bond lengths (or angles).

Mol	Type	Chain	Res	Link	Bond lengths			Bond angles		
					Counts	RMSZ	# Z > 2	Counts	RMSZ	# Z > 2
4	HEM	A	750	1	30,50,50	2.68	10 (33%)	24,82,82	2.17	8 (33%)
5	H4B	A	760	-	13,18,18	2.34	4 (30%)	11,26,26	4.09	6 (54%)
6	IHG	A	830	-	3,7,7	0.96	0	3,8,8	0.36	0
2	ACT	A	860	-	1,3,3	3.44	1 (100%)	0,3,3	0.00	-
5	H4B	B	1760	-	13,18,18	2.21	4 (30%)	11,26,26	4.14	6 (54%)
6	IHG	B	1830	-	3,7,7	1.07	0	3,8,8	0.25	0
2	ACT	B	1860	-	1,3,3	3.62	1 (100%)	0,3,3	0.00	-
4	HEM	B	750	1	30,50,50	2.62	10 (33%)	24,82,82	2.25	8 (33%)

In the following table, the Chirals column lists the number of chiral outliers, the number of chiral centers analysed, the number of these observed in the model and the number defined in the chemical component dictionary. Similar counts are reported in the Torsion and Rings columns. '-' means no outliers of that kind were identified.

Mol	Type	Chain	Res	Link	Chirals	Torsions	Rings
4	HEM	A	750	1	-	0/10/54/54	0/0/8/8
5	H4B	A	760	-	-	0/8/17/17	0/2/2/2
6	IHG	A	830	-	-	0/2/6/6	0/0/0/0
2	ACT	A	860	-	-	0/0/0/0	0/0/0/0
5	H4B	B	1760	-	-	0/8/17/17	0/2/2/2
6	IHG	B	1830	-	-	0/2/6/6	0/0/0/0
2	ACT	B	1860	-	-	0/0/0/0	0/0/0/0
4	HEM	B	750	1	-	0/10/54/54	0/0/8/8

All (30) bond length outliers are listed below:

Mol	Chain	Res	Type	Atoms	Z	Observed(Å)	Ideal(Å)
4	B	750	HEM	C2D-C3D	-6.26	1.35	1.54
4	A	750	HEM	C3D-C4D	-6.18	1.43	1.51
4	B	750	HEM	C3D-C4D	-6.18	1.43	1.51
4	A	750	HEM	C2D-C3D	-6.05	1.36	1.54
4	B	750	HEM	C3B-CAB	-5.82	1.40	1.51
4	A	750	HEM	C3C-CAC	-5.67	1.40	1.51
4	B	750	HEM	C3C-CAC	-5.36	1.41	1.51
4	A	750	HEM	C3B-CAB	-5.30	1.41	1.51
4	A	750	HEM	C3B-C4B	-5.24	1.47	1.51
4	B	750	HEM	C2C-C1C	-4.14	1.44	1.52
4	A	750	HEM	C2C-C1C	-4.03	1.44	1.52
4	B	750	HEM	C3B-C4B	-3.33	1.48	1.51
4	B	750	HEM	C2D-C1D	-2.20	1.44	1.51
4	B	750	HEM	C2B-C1B	-2.11	1.44	1.51

Continued on next page...

Continued from previous page...

Mol	Chain	Res	Type	Atoms	Z	Observed(Å)	Ideal(Å)
4	A	750	HEM	C2B-C1B	-2.10	1.45	1.51
5	A	760	H4B	C8A-N1	2.06	1.38	1.34
4	A	750	HEM	CHC-C1C	2.23	1.41	1.36
5	B	1760	H4B	C8A-N1	2.43	1.39	1.34
4	B	750	HEM	C4C-NC	2.43	1.39	1.36
4	A	750	HEM	C1C-NC	2.59	1.39	1.36
4	A	750	HEM	CHD-C4C	2.78	1.42	1.36
4	B	750	HEM	C1C-NC	3.03	1.39	1.36
2	A	860	ACT	CH3-C	3.44	1.53	1.48
5	B	1760	H4B	C6-N5	3.52	1.52	1.45
5	B	1760	H4B	C4A-N5	3.61	1.46	1.38
2	B	1860	ACT	CH3-C	3.62	1.53	1.48
5	A	760	H4B	C4A-N5	3.84	1.46	1.38
5	A	760	H4B	C6-N5	4.08	1.53	1.45
5	B	1760	H4B	C4-N3	5.03	1.42	1.33
5	A	760	H4B	C4-N3	5.25	1.42	1.33

All (28) bond angle outliers are listed below:

Mol	Chain	Res	Type	Atoms	Z	Observed(°)	Ideal(°)
5	A	760	H4B	N3-C2-N1	-4.73	117.78	125.53
5	B	1760	H4B	N3-C2-N1	-4.60	117.99	125.53
4	A	750	HEM	CAA-C2A-C1A	-2.16	124.66	127.01
4	A	750	HEM	C2D-C3D-C4D	2.10	105.07	101.50
4	B	750	HEM	C3B-C4B-CHC	2.19	126.24	123.16
4	B	750	HEM	C3B-CAB-CBB	2.44	128.19	124.46
4	A	750	HEM	CMD-C2D-C3D	2.45	125.18	114.35
4	A	750	HEM	C3B-C4B-CHC	3.07	127.49	123.16
4	B	750	HEM	CAD-C3D-C4D	3.16	123.62	112.47
5	B	1760	H4B	N2-C2-N1	3.18	122.46	117.20
4	B	750	HEM	C2D-C3D-C4D	3.24	106.99	101.50
5	A	760	H4B	N2-C2-N1	3.25	122.58	117.20
5	A	760	H4B	C4A-C8A-N8	3.32	122.34	118.43
4	A	750	HEM	CAD-C3D-C4D	3.37	124.37	112.47
4	B	750	HEM	CMD-C2D-C3D	3.49	129.79	114.35
5	B	1760	H4B	C2-N1-C8A	3.52	122.45	114.54
5	A	760	H4B	C2-N1-C8A	3.61	122.65	114.54
5	B	1760	H4B	C4A-C8A-N8	3.64	122.72	118.43
4	A	750	HEM	CMB-C2B-C3B	3.86	126.17	116.53
4	B	750	HEM	CMB-C2B-C3B	4.00	126.52	116.53
4	A	750	HEM	CMC-C2C-C3C	4.22	127.07	116.53
4	B	750	HEM	CMC-C2C-C3C	4.29	127.23	116.53

Continued on next page...

Continued from previous page...

Mol	Chain	Res	Type	Atoms	Z	Observed(°)	Ideal(°)
4	B	750	HEM	CAD-C3D-C2D	5.48	128.97	113.22
4	A	750	HEM	CAD-C3D-C2D	5.93	130.27	113.22
5	A	760	H4B	C4-N3-C2	6.26	124.63	115.94
5	B	1760	H4B	C4-N3-C2	6.26	124.63	115.94
5	A	760	H4B	C4-C4A-C8A	9.11	122.80	114.56
5	B	1760	H4B	C4-C4A-C8A	9.34	123.01	114.56

There are no chirality outliers.

There are no torsion outliers.

There are no ring outliers.

2 monomers are involved in 4 short contacts:

Mol	Chain	Res	Type	Clashes	Symm-Clashes
4	A	750	HEM	2	0
4	B	750	HEM	2	0

5.7 Other polymers [i](#)

There are no such residues in this entry.

5.8 Polymer linkage issues [i](#)

There are no chain breaks in this entry.

6 Fit of model and data ⓘ

6.1 Protein, DNA and RNA chains ⓘ

In the following table, the column labelled ‘#RSRZ> 2’ contains the number (and percentage) of RSRZ outliers, followed by percent RSRZ outliers for the chain as percentile scores relative to all X-ray entries and entries of similar resolution. The OWAB column contains the minimum, median, 95th percentile and maximum values of the occupancy-weighted average B-factor per residue. The column labelled ‘Q< 0.9’ lists the number of (and percentage) of residues with an average occupancy less than 0.9.

Mol	Chain	Analysed	<RSRZ>	#RSRZ>2	OWAB(Å ²)	Q<0.9
1	A	407/419 (97%)	0.84	57 (14%) 4 4	20, 41, 61, 76	0
1	B	410/419 (97%)	0.17	16 (3%) 43 48	19, 30, 52, 65	0
All	All	817/838 (97%)	0.50	73 (8%) 12 13	19, 34, 59, 76	0

All (73) RSRZ outliers are listed below:

Mol	Chain	Res	Type	RSRZ
1	B	300	PHE	7.5
1	B	348	VAL	7.2
1	A	490	GLY	6.2
1	A	355	PHE	5.9
1	A	486	LYS	5.8
1	A	715	VAL	5.7
1	A	488	PRO	5.5
1	A	352	ASP	5.2
1	A	716	TRP	5.0
1	A	507	GLN	4.4
1	A	491	SER	4.3
1	A	392	SER	4.2
1	B	299	ARG	4.2
1	A	388	ILE	4.2
1	B	350	THR	4.1
1	A	712	ASN	3.9
1	A	489	ASP	3.9
1	B	619	ARG	3.7
1	A	390	SER	3.7
1	A	567	VAL	3.7
1	A	350	THR	3.5
1	A	470	HIS	3.3
1	A	373	GLY	3.3
1	A	393	THR	3.2

Continued on next page...

Continued from previous page...

Mol	Chain	Res	Type	RSRZ
1	A	389	GLU	3.2
1	A	714	HIS	3.2
1	A	503	GLU	3.1
1	B	321	THR	3.1
1	B	611	ALA	3.1
1	B	620	LYS	3.0
1	A	385	ASN	2.9
1	A	519	VAL	2.9
1	A	551	PHE	2.9
1	A	554	PHE	2.9
1	A	552	ASP	2.9
1	A	351	LYS	2.8
1	A	466	THR	2.8
1	A	480	ILE	2.8
1	A	643	SER	2.8
1	A	391	THR	2.8
1	A	485	TYR	2.8
1	B	392	SER	2.8
1	A	479	LEU	2.8
1	A	321	THR	2.7
1	A	619	ARG	2.7
1	A	505	CYS	2.7
1	A	506	ILE	2.7
1	A	511	LYS	2.7
1	A	713	THR	2.7
1	A	556	ASP	2.6
1	A	561	TRP	2.6
1	A	469	LYS	2.6
1	B	351	LYS	2.6
1	A	353	GLN	2.5
1	A	514	ARG	2.5
1	A	300	PHE	2.4
1	B	352	ASP	2.4
1	A	608	GLU	2.4
1	B	667	ARG	2.4
1	A	386	LYS	2.4
1	B	323	GLU	2.3
1	A	467	ASP	2.3
1	B	615	ASP	2.2
1	A	639	TYR	2.2
1	B	617	ASP	2.2
1	A	324	THR	2.2

Continued on next page...

Continued from previous page...

Mol	Chain	Res	Type	RSRZ
1	A	504	ILE	2.2
1	B	389	GLU	2.1
1	A	565	PRO	2.1
1	A	378	MET	2.1
1	A	482	TYR	2.1
1	A	508	GLN	2.0
1	A	584	PHE	2.0

6.2 Non-standard residues in protein, DNA, RNA chains [i](#)

There are no non-standard protein/DNA/RNA residues in this entry.

6.3 Carbohydrates [i](#)

There are no carbohydrates in this entry.

6.4 Ligands [i](#)

In the following table, the Atoms column lists the number of modelled atoms in the group and the number defined in the chemical component dictionary. LLDF column lists the quality of electron density of the group with respect to its neighbouring residues in protein, DNA or RNA chains. The B-factors column lists the minimum, median, 95th percentile and maximum values of B factors of atoms in the group. The column labelled 'Q< 0.9' lists the number of atoms with occupancy less than 0.9.

Mol	Type	Chain	Res	Atoms	RSCC	RSR	LLDF	B-factors(Å ²)	Q<0.9
2	ACT	A	860	4/4	0.96	0.18	2.92	46,46,46,46	0
2	ACT	B	1860	4/4	0.96	0.14	2.55	32,32,32,32	0
6	IHG	A	830	8/8	0.92	0.26	1.26	29,30,30,30	0
6	IHG	B	1830	8/8	0.92	0.18	0.63	32,32,32,33	0
5	H4B	A	760	17/17	0.95	0.15	0.31	25,26,27,28	0
5	H4B	B	1760	17/17	0.96	0.14	0.04	19,20,22,22	0
4	HEM	B	750	43/43	0.98	0.13	-0.08	18,20,22,24	0
4	HEM	A	750	43/43	0.97	0.15	-0.40	19,20,21,22	0
3	ZN	A	900	1/1	1.00	0.08	-1.50	33,33,33,33	0

6.5 Other polymers [i](#)

There are no such residues in this entry.