



# wwPDB X-ray Structure Validation Summary Report ⓘ

Feb 1, 2016 – 10:30 AM GMT

PDB ID : 3M6A  
Title : Crystal structure of Bacillus subtilis Lon C-terminal domain  
Authors : Duman, R.E.; Lowe, J.Y.  
Deposited on : 2010-03-15  
Resolution : 3.40 Å(reported)

This is a wwPDB X-ray Structure Validation Summary Report for a publicly released PDB entry.  
We welcome your comments at [validation@mail.wwpdb.org](mailto:validation@mail.wwpdb.org)  
A user guide is available at  
<http://wwpdb.org/validation/2016/XrayValidationReportHelp>  
with specific help available everywhere you see the ⓘ symbol.

---

The following versions of software and data (see [references ⓘ](#)) were used in the production of this report:

MolProbity : 4.02b-467  
Mogul : 1.7 (RC4), CSD as536be (2015)  
Xtriage (Phenix) : 1.9-1692  
EDS : rb-20026688  
Percentile statistics : 20151230.v01 (using entries in the PDB archive December 30th 2015)  
Refmac : 5.8.0135  
CCP4 : 6.5.0  
Ideal geometry (proteins) : Engh & Huber (2001)  
Ideal geometry (DNA, RNA) : Parkinson et al. (1996)  
Validation Pipeline (wwPDB-VP) : trunk26865

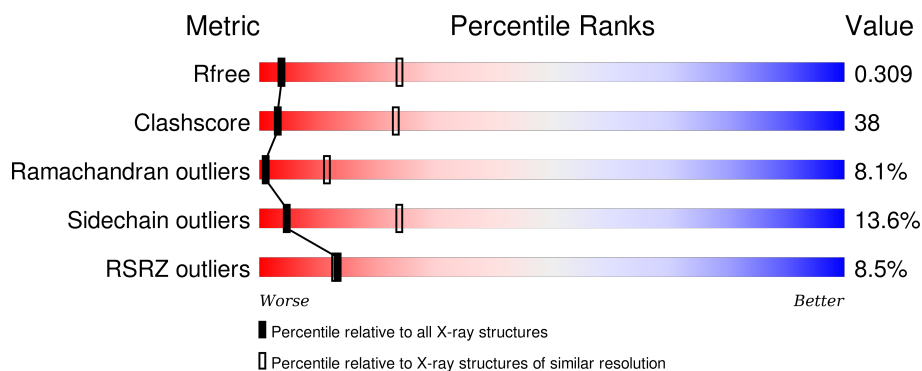
# 1 Overall quality at a glance

The following experimental techniques were used to determine the structure:

## *X-RAY DIFFRACTION*

The reported resolution of this entry is 3.40 Å.

Percentile scores (ranging between 0-100) for global validation metrics of the entry are shown in the following graphic. The table shows the number of entries on which the scores are based.



Metric	Whole archive (#Entries)	Similar resolution (#Entries, resolution range(Å))
$R_{free}$	91344	1476 (3.50-3.30)
Clashscore	102246	1611 (3.50-3.30)
Ramachandran outliers	100387	1571 (3.50-3.30)
Sidechain outliers	100360	1571 (3.50-3.30)
RSRZ outliers	91569	1485 (3.50-3.30)

The table below summarises the geometric issues observed across the polymeric chains and their fit to the electron density. The red, orange, yellow and green segments on the lower bar indicate the fraction of residues that contain outliers for  $\geq 3$ , 2, 1 and 0 types of geometric quality criteria. A grey segment represents the fraction of residues that are not modelled. The numeric value for each fraction is indicated below the corresponding segment, with a dot representing fractions  $\leq 5\%$ . The upper red bar (where present) indicates the fraction of residues that have poor fit to the electron density. The numeric value is given above the bar.

Mol	Chain	Length	Quality of chain
1	A	543	<div> <div>5%</div> <div> <div>39%</div> <div>39%</div> <div>13%</div> <div>9%</div> </div> </div>
1	B	543	<div> <div>6%</div> <div> <div>39%</div> <div>38%</div> <div>13%</div> <div>9%</div> </div> </div>
1	C	543	<div> <div>8%</div> <div> <div>37%</div> <div>41%</div> <div>13%</div> <div>9%</div> </div> </div>
1	D	543	<div> <div>10%</div> <div> <div>37%</div> <div>42%</div> <div>12%</div> <div>9%</div> </div> </div>
1	E	543	<div> <div>11%</div> <div> <div>38%</div> <div>40%</div> <div>12%</div> <div>9%</div> </div> </div>

*Continued on next page...*

*Continued from previous page...*

Mol	Chain	Length	Quality of chain
1	F	543	

The following table lists non-polymeric compounds, carbohydrate monomers and non-standard residues in protein, DNA, RNA chains that are outliers for geometric or electron-density-fit criteria:

Mol	Type	Chain	Res	Chirality	Geometry	Clashes	Electron density
2	ADP	D	783	-	-	X	-

## 2 Entry composition [i](#)

There are 2 unique types of molecules in this entry. The entry contains 23196 atoms, of which 0 are hydrogens and 0 are deuteriums.

In the tables below, the ZeroOcc column contains the number of atoms modelled with zero occupancy, the AltConf column contains the number of residues with at least one atom in alternate conformation and the Trace column contains the number of residues modelled with at most 2 atoms.

- Molecule 1 is a protein called ATP-dependent protease La 1.

Mol	Chain	Residues	Atoms					ZeroOcc	AltConf	Trace
1	A	496	Total	C	N	O	S	0	0	0
			3839	2427	666	736	10			
1	B	496	Total	C	N	O	S	0	0	0
			3839	2427	666	736	10			
1	C	496	Total	C	N	O	S	0	0	0
			3839	2427	666	736	10			
1	D	496	Total	C	N	O	S	0	0	0
			3839	2427	666	736	10			
1	E	496	Total	C	N	O	S	0	0	0
			3839	2427	666	736	10			
1	F	496	Total	C	N	O	S	0	0	0
			3839	2427	666	736	10			

There are 54 discrepancies between the modelled and reference sequences:

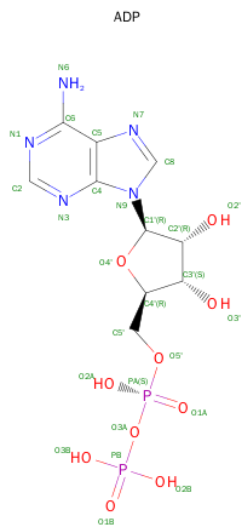
Chain	Residue	Modelled	Actual	Comment	Reference
A	677	ALA	SER	ENGINEERED MUTATION	UNP P37945
A	775	LEU	-	EXPRESSION TAG	UNP P37945
A	776	GLU	-	EXPRESSION TAG	UNP P37945
A	777	HIS	-	EXPRESSION TAG	UNP P37945
A	778	HIS	-	EXPRESSION TAG	UNP P37945
A	779	HIS	-	EXPRESSION TAG	UNP P37945
A	780	HIS	-	EXPRESSION TAG	UNP P37945
A	781	HIS	-	EXPRESSION TAG	UNP P37945
A	782	HIS	-	EXPRESSION TAG	UNP P37945
B	677	ALA	SER	ENGINEERED MUTATION	UNP P37945
B	775	LEU	-	EXPRESSION TAG	UNP P37945
B	776	GLU	-	EXPRESSION TAG	UNP P37945
B	777	HIS	-	EXPRESSION TAG	UNP P37945
B	778	HIS	-	EXPRESSION TAG	UNP P37945
B	779	HIS	-	EXPRESSION TAG	UNP P37945
B	780	HIS	-	EXPRESSION TAG	UNP P37945
B	781	HIS	-	EXPRESSION TAG	UNP P37945

*Continued on next page...*

*Continued from previous page...*

Chain	Residue	Modelled	Actual	Comment	Reference
B	782	HIS	-	EXPRESSION TAG	UNP P37945
C	677	ALA	SER	ENGINEERED MUTATION	UNP P37945
C	775	LEU	-	EXPRESSION TAG	UNP P37945
C	776	GLU	-	EXPRESSION TAG	UNP P37945
C	777	HIS	-	EXPRESSION TAG	UNP P37945
C	778	HIS	-	EXPRESSION TAG	UNP P37945
C	779	HIS	-	EXPRESSION TAG	UNP P37945
C	780	HIS	-	EXPRESSION TAG	UNP P37945
C	781	HIS	-	EXPRESSION TAG	UNP P37945
C	782	HIS	-	EXPRESSION TAG	UNP P37945
D	677	ALA	SER	ENGINEERED MUTATION	UNP P37945
D	775	LEU	-	EXPRESSION TAG	UNP P37945
D	776	GLU	-	EXPRESSION TAG	UNP P37945
D	777	HIS	-	EXPRESSION TAG	UNP P37945
D	778	HIS	-	EXPRESSION TAG	UNP P37945
D	779	HIS	-	EXPRESSION TAG	UNP P37945
D	780	HIS	-	EXPRESSION TAG	UNP P37945
D	781	HIS	-	EXPRESSION TAG	UNP P37945
D	782	HIS	-	EXPRESSION TAG	UNP P37945
E	677	ALA	SER	ENGINEERED MUTATION	UNP P37945
E	775	LEU	-	EXPRESSION TAG	UNP P37945
E	776	GLU	-	EXPRESSION TAG	UNP P37945
E	777	HIS	-	EXPRESSION TAG	UNP P37945
E	778	HIS	-	EXPRESSION TAG	UNP P37945
E	779	HIS	-	EXPRESSION TAG	UNP P37945
E	780	HIS	-	EXPRESSION TAG	UNP P37945
E	781	HIS	-	EXPRESSION TAG	UNP P37945
E	782	HIS	-	EXPRESSION TAG	UNP P37945
F	677	ALA	SER	ENGINEERED MUTATION	UNP P37945
F	775	LEU	-	EXPRESSION TAG	UNP P37945
F	776	GLU	-	EXPRESSION TAG	UNP P37945
F	777	HIS	-	EXPRESSION TAG	UNP P37945
F	778	HIS	-	EXPRESSION TAG	UNP P37945
F	779	HIS	-	EXPRESSION TAG	UNP P37945
F	780	HIS	-	EXPRESSION TAG	UNP P37945
F	781	HIS	-	EXPRESSION TAG	UNP P37945
F	782	HIS	-	EXPRESSION TAG	UNP P37945

- Molecule 2 is ADENOSINE-5'-DIPHOSPHATE (three-letter code: ADP) (formula:  $C_{10}H_{15}N_5O_{10}P_2$ ).

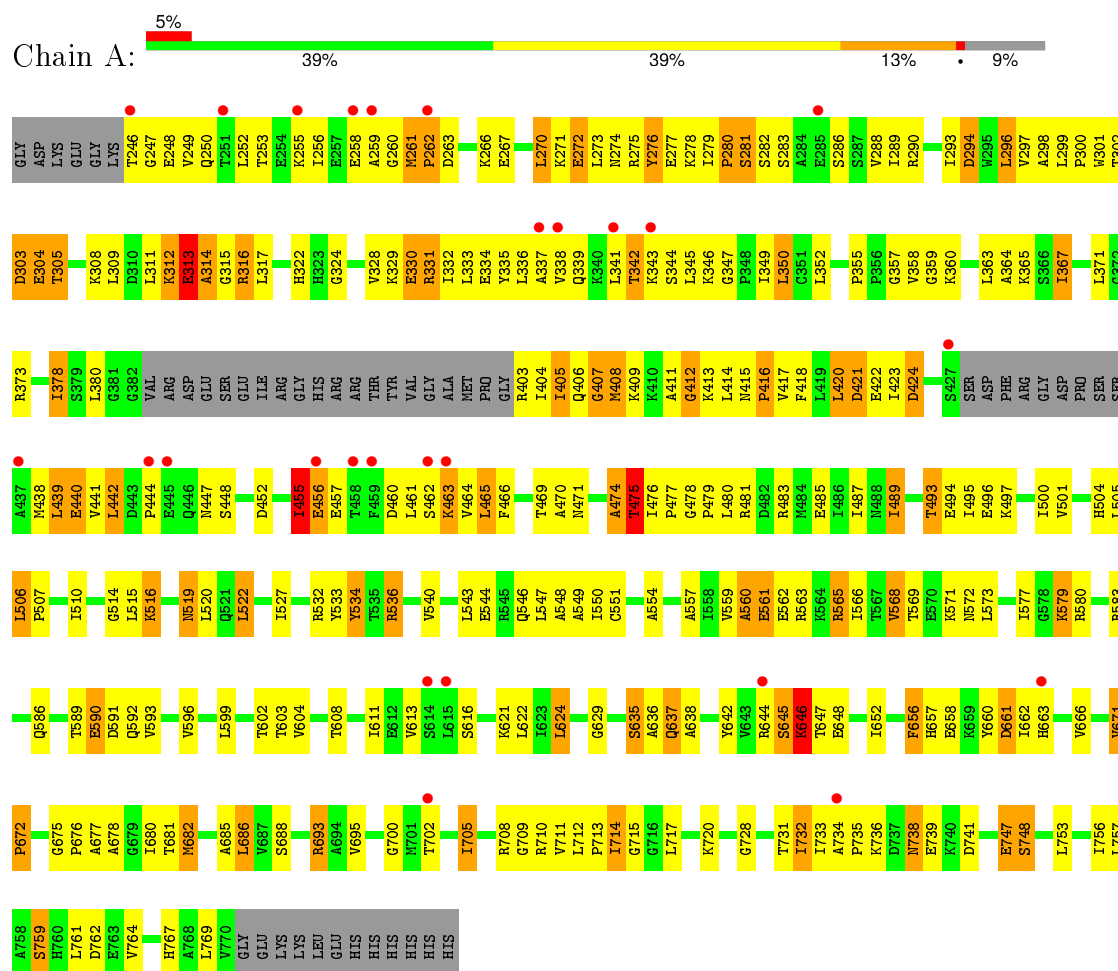


Mol	Chain	Residues	Atoms					ZeroOcc	AltConf
2	A	1	Total 27	C 10	N 5	O 10	P 2	0	0
2	B	1	Total 27	C 10	N 5	O 10	P 2	0	0
2	C	1	Total 27	C 10	N 5	O 10	P 2	0	0
2	D	1	Total 27	C 10	N 5	O 10	P 2	0	0
2	E	1	Total 27	C 10	N 5	O 10	P 2	0	0
2	F	1	Total 27	C 10	N 5	O 10	P 2	0	0

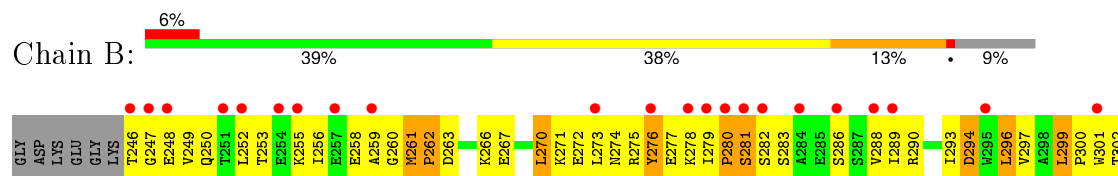
### 3 Residue-property plots

These plots are drawn for all protein, RNA and DNA chains in the entry. The first graphic for a chain summarises the proportions of errors displayed in the second graphic. The second graphic shows the sequence view annotated by issues in geometry and electron density. Residues are color-coded according to the number of geometric quality criteria for which they contain at least one outlier: green = 0, yellow = 1, orange = 2 and red = 3 or more. A red dot above a residue indicates a poor fit to the electron density (RSRZ > 2). Stretches of 2 or more consecutive residues without any outlier are shown as a green connector. Residues present in the sample, but not in the model, are shown in grey.

#### • Molecule 1: ATP-dependent protease La 1



#### • Molecule 1: ATP-dependent protease La 1

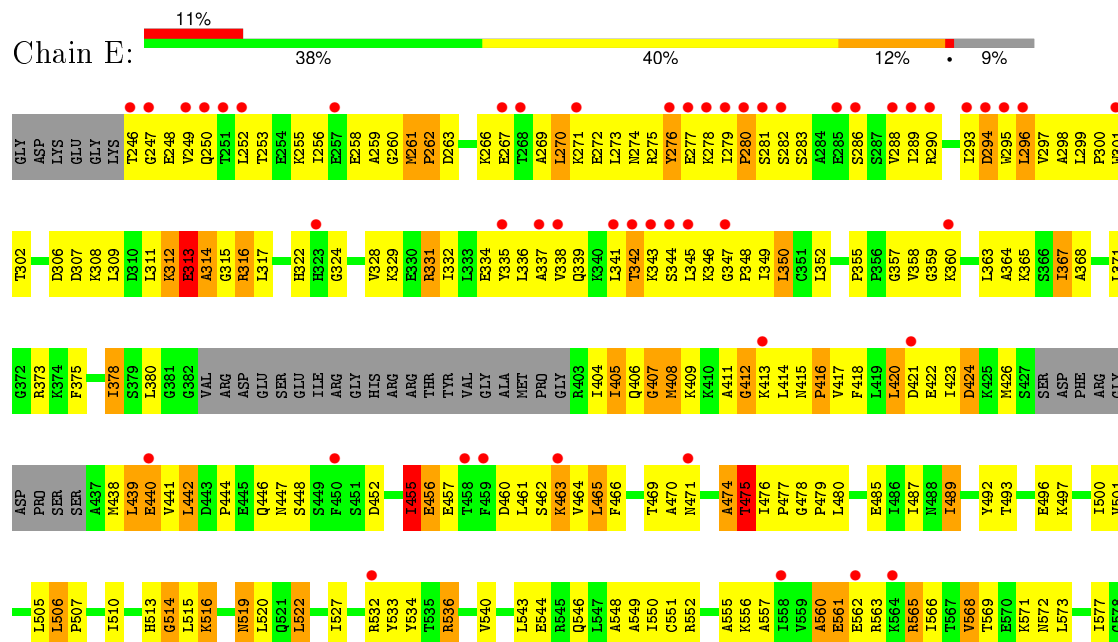


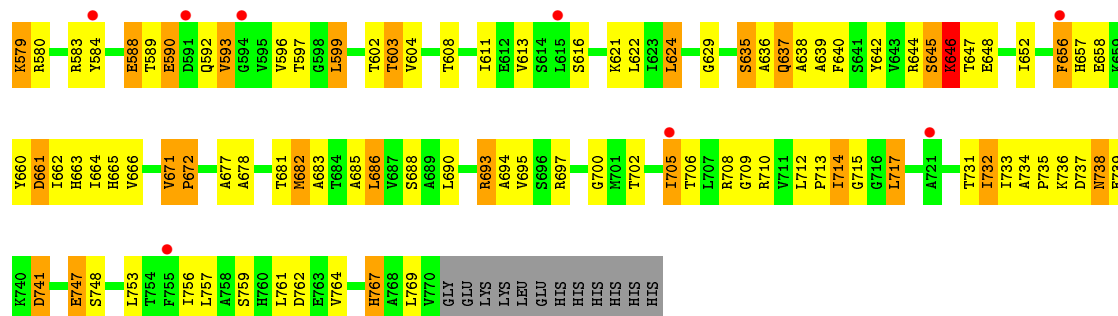


Chain D:

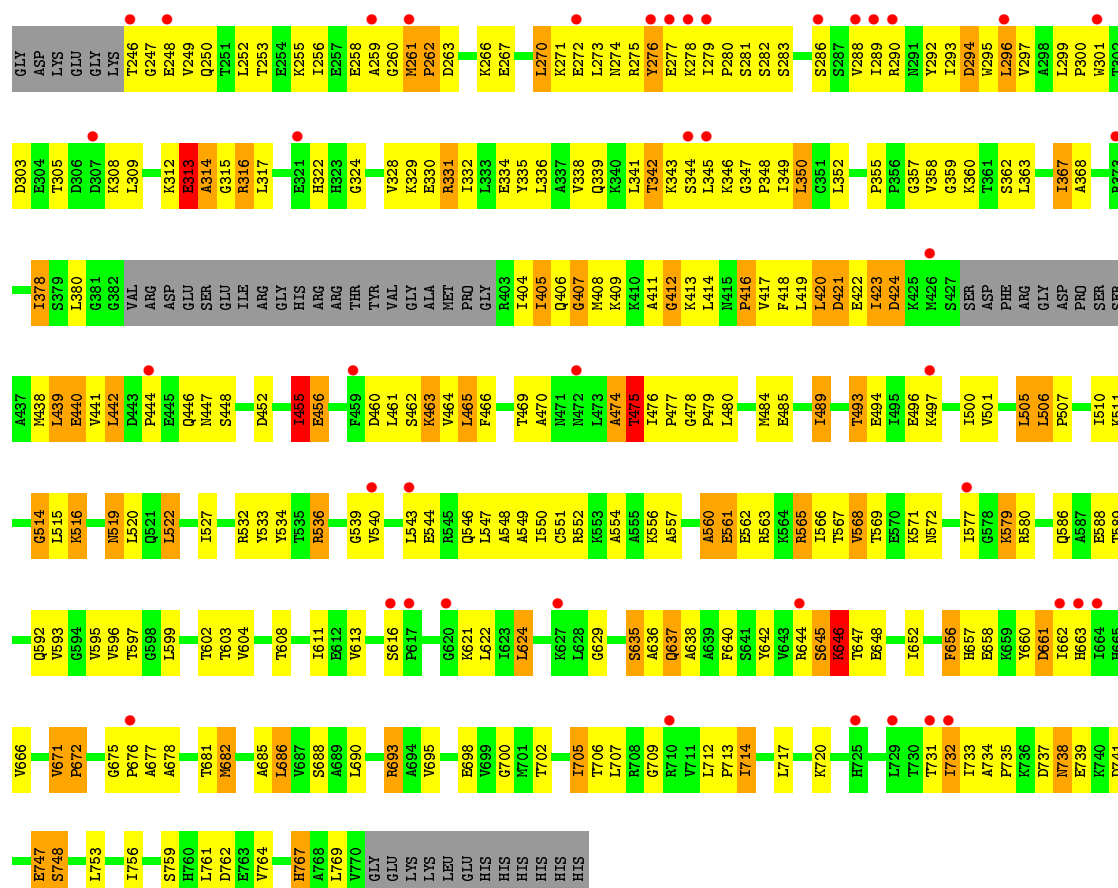


Chain E:





• Molecule 1: ATP-dependent protease La 1



## 4 Data and refinement statistics

Property	Value	Source
Space group	P 1 21 1	Depositor
Cell constants a, b, c, $\alpha$ , $\beta$ , $\gamma$	103.38 Å 127.40 Å 148.99 Å 90.00° 100.50° 90.00°	Depositor
Resolution (Å)	29.91 – 3.40 58.42 – 3.40	Depositor EDS
% Data completeness (in resolution range)	98.7 (29.91-3.40) 99.6 (58.42-3.40)	Depositor EDS
$R_{merge}$	0.09	Depositor
$R_{sym}$	0.10	Depositor
$\langle I/\sigma(I) \rangle$ <sup>1</sup>	2.09 (at 3.40 Å)	Xtriage
Refinement program	PHENIX (phenix.refine: 1.6.1_357)	Depositor
R, $R_{free}$	0.265 , 0.313 0.261 , 0.309	Depositor DCC
$R_{free}$ test set	2605 reflections (5.25%)	DCC
Wilson B-factor (Å <sup>2</sup> )	117.1	Xtriage
Anisotropy	0.202	Xtriage
Bulk solvent $k_{sol}$ (e/Å <sup>3</sup> ), $B_{sol}$ (Å <sup>2</sup> )	0.22 , 131.0	EDS
Estimated twinning fraction	No twinning to report.	Xtriage
L-test for twinning <sup>2</sup>	$\langle  L  \rangle = 0.46$ , $\langle L^2 \rangle = 0.29$	Xtriage
Outliers	0 of 52254 reflections	Xtriage
$F_o, F_c$ correlation	0.89	EDS
Total number of atoms	23196	wwPDB-VP
Average B, all atoms (Å <sup>2</sup> )	194.0	wwPDB-VP

Xtriage's analysis on translational NCS is as follows: *The largest off-origin peak in the Patterson function is 2.59% of the height of the origin peak. No significant pseudotranslation is detected.*

<sup>1</sup> Intensities estimated from amplitudes.

<sup>2</sup> Theoretical values of  $\langle |L| \rangle$ ,  $\langle L^2 \rangle$  for acentric reflections are 0.5, 0.375 respectively for untwinned datasets, and 0.333, 0.2 for perfectly twinned datasets.

## 5 Model quality [i](#)

### 5.1 Standard geometry [i](#)

Bond lengths and bond angles in the following residue types are not validated in this section: ADP

The Z score for a bond length (or angle) is the number of standard deviations the observed value is removed from the expected value. A bond length (or angle) with  $|Z| > 5$  is considered an outlier worth inspection. RMSZ is the root-mean-square of all Z scores of the bond lengths (or angles).

Mol	Chain	Bond lengths		Bond angles	
		RMSZ	$\# Z  > 5$	RMSZ	$\# Z  > 5$
1	A	0.49	0/3892	0.63	0/5246
1	B	0.47	0/3892	0.64	0/5246
1	C	0.45	0/3892	0.62	0/5246
1	D	0.51	0/3892	0.64	1/5246 (0.0%)
1	E	0.46	0/3892	0.63	0/5246
1	F	0.44	0/3892	0.63	1/5246 (0.0%)
All	All	0.47	0/23352	0.63	2/31476 (0.0%)

There are no bond length outliers.

All (2) bond angle outliers are listed below:

Mol	Chain	Res	Type	Atoms	Z	Observed(°)	Ideal(°)
1	D	505	LEU	CB-CG-CD2	-5.66	101.37	111.00
1	F	505	LEU	CB-CG-CD2	-5.54	101.58	111.00

There are no chirality outliers.

There are no planarity outliers.

### 5.2 Too-close contacts [i](#)

In the following table, the Non-H and H(model) columns list the number of non-hydrogen atoms and hydrogen atoms in the chain respectively. The H(added) column lists the number of hydrogen atoms added and optimized by MolProbity. The Clashes column lists the number of clashes within the asymmetric unit, whereas Symm-Clashes lists symmetry related clashes.

Mol	Chain	Non-H	H(model)	H(added)	Clashes	Symm-Clashes
1	A	3839	0	3968	297	0
1	B	3839	0	3968	324	0
1	C	3839	0	3968	317	0

*Continued on next page...*

*Continued from previous page...*

Mol	Chain	Non-H	H(model)	H(added)	Clashes	Symm-Clashes
1	D	3839	0	3968	300	1
1	E	3839	0	3968	308	0
1	F	3839	0	3968	287	1
2	A	27	0	12	7	0
2	B	27	0	12	7	0
2	C	27	0	12	6	0
2	D	27	0	12	11	0
2	E	27	0	12	6	0
2	F	27	0	12	7	0
All	All	23196	0	23880	1793	1

The all-atom clashscore is defined as the number of clashes found per 1000 atoms (including hydrogen atoms). The all-atom clashscore for this structure is 38.

The worst 5 of 1793 close contacts within the same asymmetric unit are listed below, sorted by their clash magnitude.

Atom-1	Atom-2	Interatomic distance (Å)	Clash overlap (Å)
1:F:493:THR:HG21	1:F:748:SER:HB2	1.26	1.08
1:B:552:ARG:HG3	1:E:338:VAL:HG21	1.31	1.08
1:C:350:LEU:HD12	1:C:350:LEU:H	1.18	1.02
1:B:337:ALA:CB	1:F:556:LYS:HA	1.89	1.02
1:A:501:VAL:HG11	1:A:527:ILE:HD13	1.39	1.01

All (1) symmetry-related close contacts are listed below. The label for Atom-2 includes the symmetry operator and encoded unit-cell translations to be applied.

Atom-1	Atom-2	Interatomic distance (Å)	Clash overlap (Å)
1:D:555:ALA:O	1:F:511:LYS:NZ[2_646]	2.14	0.06

## 5.3 Torsion angles [i](#)

### 5.3.1 Protein backbone [i](#)

In the following table, the Percentiles column shows the percent Ramachandran outliers of the chain as a percentile score with respect to all X-ray entries followed by that with respect to entries of similar resolution.

The Analysed column shows the number of residues for which the backbone conformation was analysed, and the total number of residues.

Mol	Chain	Analysed	Favoured	Allowed	Outliers	Percentiles	
1	A	490/543 (90%)	350 (71%)	97 (20%)	43 (9%)	1	10
1	B	490/543 (90%)	354 (72%)	94 (19%)	42 (9%)	1	10
1	C	490/543 (90%)	347 (71%)	104 (21%)	39 (8%)	1	12
1	D	490/543 (90%)	350 (71%)	102 (21%)	38 (8%)	1	12
1	E	490/543 (90%)	350 (71%)	102 (21%)	38 (8%)	1	12
1	F	490/543 (90%)	352 (72%)	99 (20%)	39 (8%)	1	12
All	All	2940/3258 (90%)	2103 (72%)	598 (20%)	239 (8%)	1	11

5 of 239 Ramachandran outliers are listed below:

Mol	Chain	Res	Type
1	A	276	TYR
1	A	288	VAL
1	A	303	ASP
1	A	304	GLU
1	A	314	ALA

### 5.3.2 Protein sidechains ⓘ

In the following table, the Percentiles column shows the percent sidechain outliers of the chain as a percentile score with respect to all X-ray entries followed by that with respect to entries of similar resolution.

The Analysed column shows the number of residues for which the sidechain conformation was analysed, and the total number of residues.

Mol	Chain	Analysed	Rotameric	Outliers	Percentiles	
1	A	415/454 (91%)	361 (87%)	54 (13%)	5	25
1	B	415/454 (91%)	358 (86%)	57 (14%)	4	23
1	C	415/454 (91%)	357 (86%)	58 (14%)	4	23
1	D	415/454 (91%)	358 (86%)	57 (14%)	4	23
1	E	415/454 (91%)	357 (86%)	58 (14%)	4	23
1	F	415/454 (91%)	360 (87%)	55 (13%)	5	24
All	All	2490/2724 (91%)	2151 (86%)	339 (14%)	5	24

5 of 339 residues with a non-rotameric sidechain are listed below:

Mol	Chain	Res	Type
1	C	666	VAL

*Continued on next page...*

*Continued from previous page...*

Mol	Chain	Res	Type
1	D	506	LEU
1	F	588	GLU
1	C	705	ILE
1	D	303	ASP

Some sidechains can be flipped to improve hydrogen bonding and reduce clashes. 5 of 18 such sidechains are listed below:

Mol	Chain	Res	Type
1	C	446	GLN
1	C	586	GLN
1	E	767	HIS
1	C	250	GLN
1	C	291	ASN

### 5.3.3 RNA ⓘ

There are no RNA molecules in this entry.

## 5.4 Non-standard residues in protein, DNA, RNA chains ⓘ

There are no non-standard protein/DNA/RNA residues in this entry.

## 5.5 Carbohydrates ⓘ

There are no carbohydrates in this entry.

## 5.6 Ligand geometry ⓘ

6 ligands are modelled in this entry.

In the following table, the Counts columns list the number of bonds (or angles) for which Mogul statistics could be retrieved, the number of bonds (or angles) that are observed in the model and the number of bonds (or angles) that are defined in the chemical component dictionary. The Link column lists molecule types, if any, to which the group is linked. The Z score for a bond length (or angle) is the number of standard deviations the observed value is removed from the expected value. A bond length (or angle) with  $|Z| > 2$  is considered an outlier worth inspection. RMSZ is the root-mean-square of all Z scores of the bond lengths (or angles).

Mol	Type	Chain	Res	Link	Bond lengths			Bond angles		
					Counts	RMSZ	# Z  > 2	Counts	RMSZ	# Z  > 2
2	ADP	A	783	-	22,29,29	1.28	2 (9%)	27,45,45	2.53	6 (22%)
2	ADP	B	783	-	22,29,29	1.00	1 (4%)	27,45,45	2.27	7 (25%)
2	ADP	C	783	-	22,29,29	1.17	1 (4%)	27,45,45	2.40	10 (37%)
2	ADP	D	783	-	22,29,29	1.33	3 (13%)	27,45,45	2.52	11 (40%)
2	ADP	E	783	-	22,29,29	1.12	2 (9%)	27,45,45	2.46	11 (40%)
2	ADP	F	783	-	22,29,29	1.02	1 (4%)	27,45,45	2.17	8 (29%)

In the following table, the Chirals column lists the number of chiral outliers, the number of chiral centers analysed, the number of these observed in the model and the number defined in the chemical component dictionary. Similar counts are reported in the Torsion and Rings columns. '-' means no outliers of that kind were identified.

Mol	Type	Chain	Res	Link	Chirals	Torsions	Rings
2	ADP	A	783	-	-	0/12/32/32	0/3/3/3
2	ADP	B	783	-	-	0/12/32/32	0/3/3/3
2	ADP	C	783	-	-	0/12/32/32	0/3/3/3
2	ADP	D	783	-	-	0/12/32/32	0/3/3/3
2	ADP	E	783	-	-	0/12/32/32	0/3/3/3
2	ADP	F	783	-	-	0/12/32/32	0/3/3/3

The worst 5 of 10 bond length outliers are listed below:

Mol	Chain	Res	Type	Atoms	Z	Observed(Å)	Ideal(Å)
2	D	783	ADP	PB-O3B	-2.23	1.46	1.54
2	D	783	ADP	C5-N7	-2.07	1.32	1.39
2	A	783	ADP	C2-N3	2.04	1.35	1.32
2	E	783	ADP	C2-N3	2.30	1.36	1.32
2	B	783	ADP	C5-C4	2.75	1.46	1.40

The worst 5 of 53 bond angle outliers are listed below:

Mol	Chain	Res	Type	Atoms	Z	Observed(°)	Ideal(°)
2	A	783	ADP	PA-O3A-PB	-8.87	102.94	132.67
2	B	783	ADP	N3-C2-N1	-7.15	123.42	128.89
2	F	783	ADP	N3-C2-N1	-6.44	123.96	128.89
2	E	783	ADP	C4-C5-N7	-6.12	103.85	109.48
2	D	783	ADP	N3-C2-N1	-5.64	124.57	128.89

There are no chirality outliers.

There are no torsion outliers.

There are no ring outliers.

6 monomers are involved in 44 short contacts:

Mol	Chain	Res	Type	Clashes	Symm-Clashes
2	A	783	ADP	7	0
2	B	783	ADP	7	0
2	C	783	ADP	6	0
2	D	783	ADP	11	0
2	E	783	ADP	6	0
2	F	783	ADP	7	0

## 5.7 Other polymers [i](#)

There are no such residues in this entry.

## 5.8 Polymer linkage issues [i](#)

There are no chain breaks in this entry.

## 6 Fit of model and data [i](#)

### 6.1 Protein, DNA and RNA chains [i](#)

In the following table, the column labelled ‘#RSRZ> 2’ contains the number (and percentage) of RSRZ outliers, followed by percent RSRZ outliers for the chain as percentile scores relative to all X-ray entries and entries of similar resolution. The OWAB column contains the minimum, median, 95<sup>th</sup> percentile and maximum values of the occupancy-weighted average B-factor per residue. The column labelled ‘Q< 0.9’ lists the number of (and percentage) of residues with an average occupancy less than 0.9.

Mol	Chain	Analysed	<RSRZ>	#RSRZ>2	OWAB(Å <sup>2</sup> )	Q<0.9
1	A	496/543 (91%)	0.21	26 (5%) 31 28	69, 145, 461, 643	0
1	B	496/543 (91%)	0.25	30 (6%) 25 23	75, 143, 456, 637	0
1	C	496/543 (91%)	0.40	42 (8%) 13 13	71, 145, 458, 683	0
1	D	496/543 (91%)	0.48	56 (11%) 7 7	65, 145, 463, 696	0
1	E	496/543 (91%)	0.50	58 (11%) 6 6	75, 146, 466, 682	0
1	F	496/543 (91%)	0.32	42 (8%) 13 13	78, 148, 457, 672	0
All	All	2976/3258 (91%)	0.36	254 (8%) 13 13	65, 145, 464, 696	0

The worst 5 of 254 RSRZ outliers are listed below:

Mol	Chain	Res	Type	RSRZ
1	C	287	SER	15.5
1	E	246	THR	13.8
1	B	246	THR	10.8
1	F	278	LYS	10.5
1	B	282	SER	10.3

### 6.2 Non-standard residues in protein, DNA, RNA chains [i](#)

There are no non-standard protein/DNA/RNA residues in this entry.

### 6.3 Carbohydrates [i](#)

There are no carbohydrates in this entry.

## 6.4 Ligands [i](#)

In the following table, the Atoms column lists the number of modelled atoms in the group and the number defined in the chemical component dictionary. LLDF column lists the quality of electron density of the group with respect to its neighbouring residues in protein, DNA or RNA chains. The B-factors column lists the minimum, median, 95<sup>th</sup> percentile and maximum values of B factors of atoms in the group. The column labelled 'Q< 0.9' lists the number of atoms with occupancy less than 0.9.

Mol	Type	Chain	Res	Atoms	RSCC	RSR	LLDF	B-factors( $\text{\AA}^2$ )	Q<0.9
2	ADP	D	783	27/27	0.73	0.31	0.96	30,142,369,458	0
2	ADP	C	783	27/27	0.89	0.30	0.65	57,125,341,462	0
2	ADP	B	783	27/27	0.91	0.25	0.11	73,123,341,499	0
2	ADP	A	783	27/27	0.91	0.22	-0.04	55,104,341,499	0
2	ADP	F	783	27/27	0.92	0.22	-0.20	57,123,341,482	0
2	ADP	E	783	27/27	0.93	0.19	-0.79	53,114,341,491	0

## 6.5 Other polymers [i](#)

There are no such residues in this entry.