



Full wwPDB X-ray Structure Validation Report ⓘ

Feb 1, 2016 – 10:30 AM GMT

PDB ID : 3M7O
Title : Crystal structure of mouse MD-1 in complex with phosphatidylcholine
Authors : Harada, H.; Ohto, U.; Satow, Y.
Deposited on : 2010-03-17
Resolution : 1.65 Å(reported)

This is a Full wwPDB X-ray Structure Validation Report for a publicly released PDB entry.
We welcome your comments at validation@mail.wwpdb.org
A user guide is available at
<http://wwpdb.org/validation/2016/XrayValidationReportHelp>
with specific help available everywhere you see the ⓘ symbol.

The following versions of software and data (see [references ⓘ](#)) were used in the production of this report:

MolProbity : 4.02b-467
Mogul : 1.7 (RC4), CSD as536be (2015)
Xtriage (Phenix) : 1.9-1692
EDS : rb-20026688
Percentile statistics : 20151230.v01 (using entries in the PDB archive December 30th 2015)
Refmac : 5.8.0135
CCP4 : 6.5.0
Ideal geometry (proteins) : Engh & Huber (2001)
Ideal geometry (DNA, RNA) : Parkinson et al. (1996)
Validation Pipeline (wwPDB-VP) : trunk26865

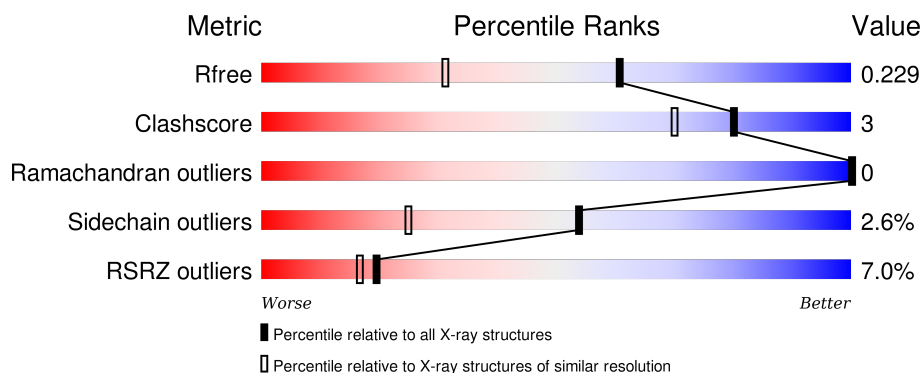
1 Overall quality at a glance

The following experimental techniques were used to determine the structure:

X-RAY DIFFRACTION

The reported resolution of this entry is 1.65 Å.

Percentile scores (ranging between 0-100) for global validation metrics of the entry are shown in the following graphic. The table shows the number of entries on which the scores are based.



Metric	Whole archive (#Entries)	Similar resolution (#Entries, resolution range(Å))
R_{free}	91344	1226 (1.66-1.66)
Clashscore	102246	1323 (1.66-1.66)
Ramachandran outliers	100387	1295 (1.66-1.66)
Sidechain outliers	100360	1295 (1.66-1.66)
RSRZ outliers	91569	1227 (1.66-1.66)

The table below summarises the geometric issues observed across the polymeric chains and their fit to the electron density. The red, orange, yellow and green segments on the lower bar indicate the fraction of residues that contain outliers for ≥ 3 , 2, 1 and 0 types of geometric quality criteria. A grey segment represents the fraction of residues that are not modelled. The numeric value for each fraction is indicated below the corresponding segment, with a dot representing fractions $\leq 5\%$. The upper red bar (where present) indicates the fraction of residues that have poor fit to the electron density. The numeric value is given above the bar.

Mol	Chain	Length	Quality of chain
1	A	162	<div> <div>4%</div> <div>75%</div> <div>10%</div> <div>15%</div> </div>
1	B	162	<div> <div>10%</div> <div>75%</div> <div>6%</div> <div>19%</div> </div>
1	C	162	<div> <div>6%</div> <div>77%</div> <div>•</div> <div>19%</div> </div>
1	D	162	<div> <div>3%</div> <div>70%</div> <div>9%</div> <div>19%</div> </div>

The following table lists non-polymeric compounds, carbohydrate monomers and non-standard

residues in protein, DNA, RNA chains that are outliers for geometric or electron-density-fit criteria:

Mol	Type	Chain	Res	Chirality	Geometry	Clashes	Electron density
2	NAG	A	201	-	-	-	X
2	NAG	D	201	-	-	-	X
3	L9R	A	301	-	-	-	X
3	L9R	D	301	-	-	-	X
4	BEN	A	166	-	-	-	X
4	BEN	A	167	-	-	-	X
4	BEN	B	164	-	-	-	X
4	BEN	D	163	-	-	-	X
4	BEN	D	165	-	-	-	X
4	BEN	D	166	-	-	-	X
4	BEN	D	167	-	-	-	X
5	NDG	B	201	-	-	-	X

2 Entry composition [i](#)

There are 6 unique types of molecules in this entry. The entry contains 4955 atoms, of which 0 are hydrogens and 0 are deuteriums.

In the tables below, the ZeroOcc column contains the number of atoms modelled with zero occupancy, the AltConf column contains the number of residues with at least one atom in alternate conformation and the Trace column contains the number of residues modelled with at most 2 atoms.

- Molecule 1 is a protein called Lymphocyte antigen 86.

Mol	Chain	Residues	Atoms					ZeroOcc	AltConf	Trace
1	A	137	Total	C	N	O	S	0	1	0
			1075	676	183	209	7			
1	B	131	Total	C	N	O	S	0	1	0
			1024	646	175	196	7			
1	C	131	Total	C	N	O	S	0	1	0
			1024	646	175	196	7			
1	D	131	Total	C	N	O	S	0	1	0
			1024	646	175	196	7			

- Molecule 2 is SUGAR (N-ACETYL-D-GLUCOSAMINE) (three-letter code: NAG) (formula: $C_8H_{15}NO_6$).



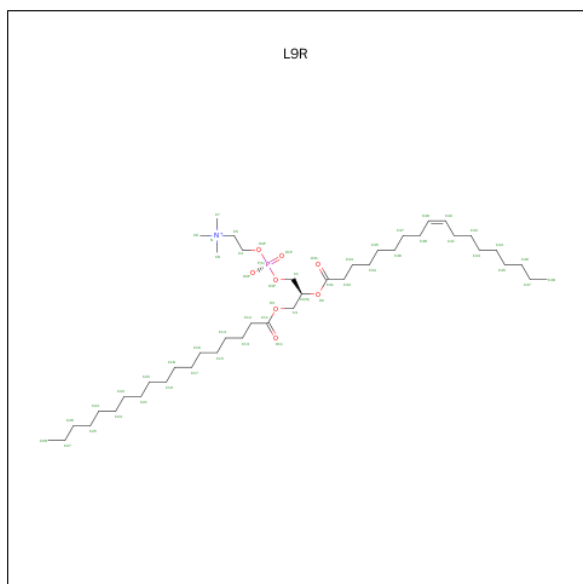
Mol	Chain	Residues	Atoms				ZeroOcc	AltConf
2	A	1	Total	C	N	O	0	0
			14	8	1	5		
2	A	1	Total	C	N	O	0	0
			14	8	1	5		

Continued on next page...

Continued from previous page...

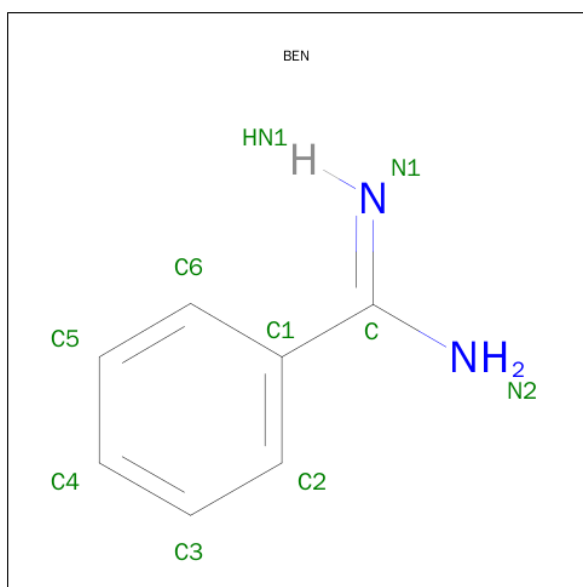
Mol	Chain	Residues	Atoms				ZeroOcc	AltConf
2	B	1	Total	C	N	O	0	0
			14	8	1	5		
2	C	1	Total	C	N	O	0	0
			14	8	1	5		
2	C	1	Total	C	N	O	0	0
			14	8	1	5		
2	D	1	Total	C	N	O	0	0
			14	8	1	5		
2	D	1	Total	C	N	O	0	0
			14	8	1	5		

- Molecule 3 is (2S)-3-(OCTADECANOYLOXY)-2-[(9Z)-OCTADEC-9-ENOYLOXY]PROPYL 2-(TRIMETHYLAMMONIO)ETHYL PHOSPHATE (three-letter code: L9R) (formula: $C_{44}H_{86}NO_8P$).



Mol	Chain	Residues	Atoms					ZeroOcc	AltConf
3	A	1	Total	C	N	O	P	0	0
			54	44	1	8	1		
3	D	1	Total	C	N	O	P	0	0
			54	44	1	8	1		

- Molecule 4 is BENZAMIDINE (three-letter code: BEN) (formula: $C_7H_8N_2$).



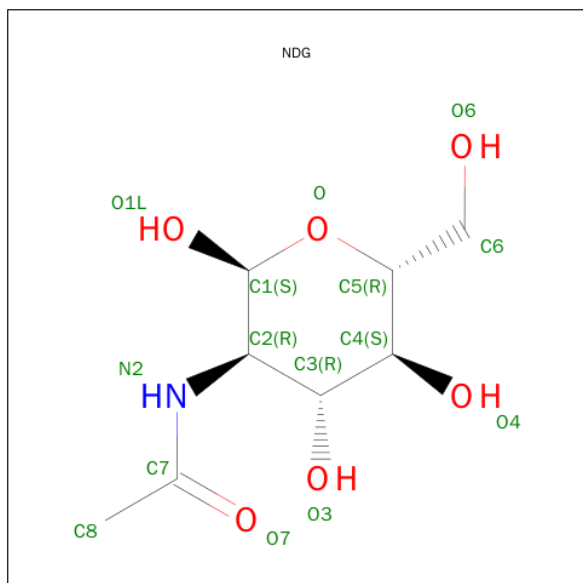
Mol	Chain	Residues	Atoms			ZeroOcc	AltConf
4	A	1	Total	C	N	0	0
			9	7	2		
4	A	1	Total	C	N	0	0
			9	7	2		
4	A	1	Total	C	N	0	0
			9	7	2		
4	A	1	Total	C	N	0	0
			9	7	2		
4	B	1	Total	C	N	0	0
			9	7	2		
4	B	1	Total	C	N	0	0
			9	7	2		
4	B	1	Total	C	N	0	0
			9	7	2		
4	C	1	Total	C	N	0	0
			9	7	2		
4	C	1	Total	C	N	0	0
			9	7	2		
4	C	1	Total	C	N	0	0
			9	7	2		
4	D	1	Total	C	N	0	0
			9	7	2		
4	D	1	Total	C	N	0	0
			9	7	2		
4	D	1	Total	C	N	0	0
			9	7	2		

Continued on next page...

Continued from previous page...

Mol	Chain	Residues	Atoms			ZeroOcc	AltConf
4	D	1	Total	C	N	0	0
			9	7	2		
4	D	1	Total	C	N	0	0
			9	7	2		

- Molecule 5 is SUGAR (2-(ACETYLAMINO)-2-DEOXY-A-D-GLUCOPYRANOSE) (three-letter code: NDG) (formula: $C_8H_{15}NO_6$).



Mol	Chain	Residues	Atoms				ZeroOcc	AltConf
5	B	1	Total	C	N	O	0	0
			14	8	1	5		

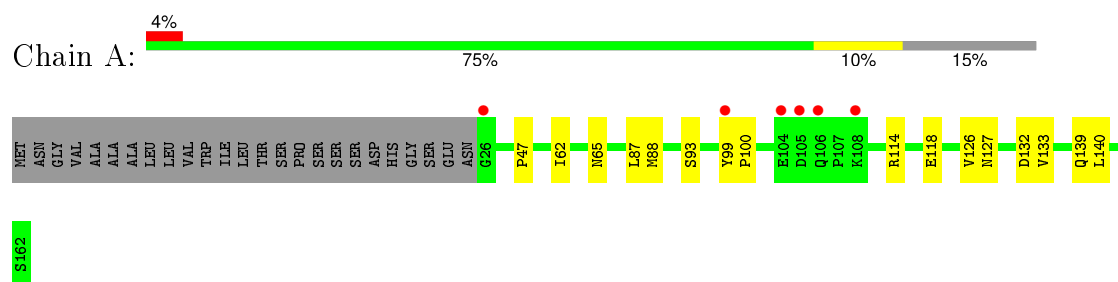
- Molecule 6 is water.

Mol	Chain	Residues	Atoms		ZeroOcc	AltConf
6	A	128	Total	O	0	0
			128	128		
6	B	97	Total	O	0	0
			97	97		
6	C	104	Total	O	0	0
			104	104		
6	D	115	Total	O	0	0
			115	115		

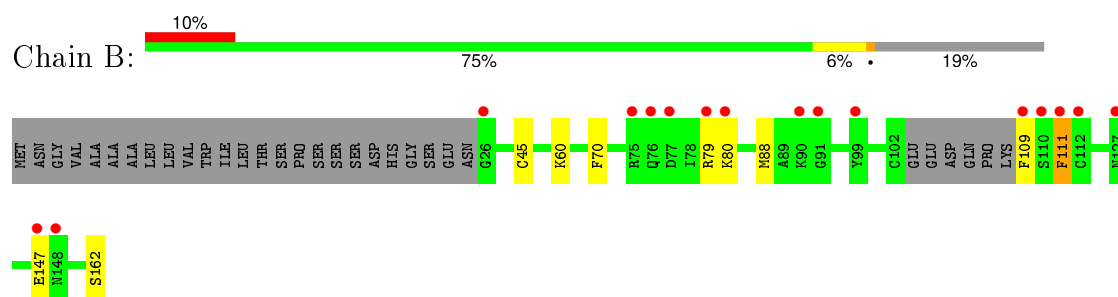
3 Residue-property plots [i](#)

These plots are drawn for all protein, RNA and DNA chains in the entry. The first graphic for a chain summarises the proportions of errors displayed in the second graphic. The second graphic shows the sequence view annotated by issues in geometry and electron density. Residues are color-coded according to the number of geometric quality criteria for which they contain at least one outlier: green = 0, yellow = 1, orange = 2 and red = 3 or more. A red dot above a residue indicates a poor fit to the electron density ($RSRZ > 2$). Stretches of 2 or more consecutive residues without any outlier are shown as a green connector. Residues present in the sample, but not in the model, are shown in grey.

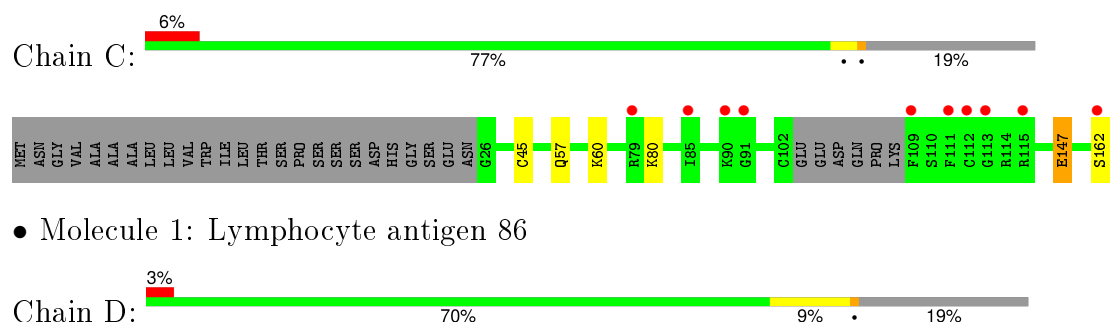
• Molecule 1: Lymphocyte antigen 86



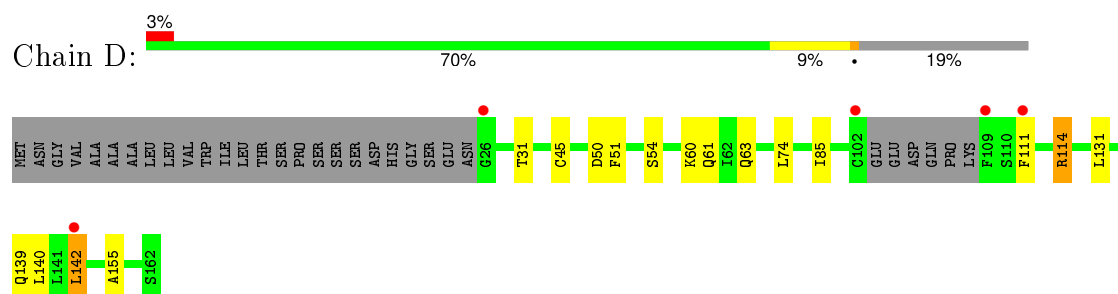
• Molecule 1: Lymphocyte antigen 86



• Molecule 1: Lymphocyte antigen 86



• Molecule 1: Lymphocyte antigen 86



4 Data and refinement statistics

Property	Value	Source
Space group	P 43	Depositor
Cell constants a, b, c, α , β , γ	90.30Å 90.30Å 86.71Å 90.00° 90.00° 90.00°	Depositor
Resolution (Å)	29.96 – 1.65 29.96 – 1.65	Depositor EDS
% Data completeness (in resolution range)	98.1 (29.96-1.65) 84.6 (29.96-1.65)	Depositor EDS
R_{merge}	0.07	Depositor
R_{sym}	(Not available)	Depositor
$\langle I/\sigma(I) \rangle$ ¹	3.94 (at 1.65Å)	Xtriage
Refinement program	REFMAC 5.5.0109	Depositor
R, R_{free}	0.195 , 0.227 0.196 , 0.229	Depositor DCC
R_{free} test set	3551 reflections (5.29%)	DCC
Wilson B-factor (Å ²)	27.0	Xtriage
Anisotropy	0.049	Xtriage
Bulk solvent k_{sol} (e/Å ³), B_{sol} (Å ²)	0.39 , 53.6	EDS
Estimated twinning fraction	0.017 for -h,-l,-k 0.001 for -h,l,k 0.001 for l,-k,h 0.018 for -l,-k,-h 0.033 for h,-k,-l	Xtriage
L-test for twinning ²	$\langle L \rangle = 0.49$, $\langle L^2 \rangle = 0.32$	Xtriage
Outliers	0 of 70690 reflections	Xtriage
F_o, F_c correlation	0.96	EDS
Total number of atoms	4955	wwPDB-VP
Average B, all atoms (Å ²)	38.0	wwPDB-VP

Xtriage's analysis on translational NCS is as follows: *The largest off-origin peak in the Patterson function is 5.67% of the height of the origin peak. No significant pseudotranslation is detected.*

¹ Intensities estimated from amplitudes.

² Theoretical values of $\langle |L| \rangle$, $\langle L^2 \rangle$ for acentric reflections are 0.5, 0.375 respectively for untwinned datasets, and 0.333, 0.2 for perfectly twinned datasets.

5 Model quality

5.1 Standard geometry

Bond lengths and bond angles in the following residue types are not validated in this section: BEN, L9R, NDG, NAG

The Z score for a bond length (or angle) is the number of standard deviations the observed value is removed from the expected value. A bond length (or angle) with $|Z| > 5$ is considered an outlier worth inspection. RMSZ is the root-mean-square of all Z scores of the bond lengths (or angles).

Mol	Chain	Bond lengths		Bond angles	
		RMSZ	$\# Z > 5$	RMSZ	$\# Z > 5$
1	A	0.53	0/1099	0.69	1/1487 (0.1%)
1	B	0.49	0/1046	0.65	0/1414
1	C	0.52	0/1046	0.65	0/1414
1	D	0.59	0/1046	0.72	2/1414 (0.1%)
All	All	0.53	0/4237	0.68	3/5729 (0.1%)

There are no bond length outliers.

All (3) bond angle outliers are listed below:

Mol	Chain	Res	Type	Atoms	Z	Observed(°)	Ideal(°)
1	D	50	ASP	CB-CG-OD2	6.07	123.76	118.30
1	D	140	LEU	CA-CB-CG	5.87	128.79	115.30
1	A	140	LEU	CA-CB-CG	5.77	128.58	115.30

There are no chirality outliers.

There are no planarity outliers.

5.2 Too-close contacts

In the following table, the Non-H and H(model) columns list the number of non-hydrogen atoms and hydrogen atoms in the chain respectively. The H(added) column lists the number of hydrogen atoms added and optimized by MolProbity. The Clashes column lists the number of clashes within the asymmetric unit, whereas Symm-Clashes lists symmetry related clashes.

Mol	Chain	Non-H	H(model)	H(added)	Clashes	Symm-Clashes
1	A	1075	0	1045	10	0
1	B	1024	0	1000	7	0
1	C	1024	0	1000	2	0
1	D	1024	0	1000	10	0

Continued on next page...

Continued from previous page...

Mol	Chain	Non-H	H(model)	H(added)	Clashes	Symm-Clashes
2	A	28	0	26	0	0
2	B	14	0	13	0	0
2	C	28	0	26	0	0
2	D	28	0	26	0	0
3	A	54	0	86	2	0
3	D	54	0	86	1	0
4	A	45	0	35	0	0
4	B	27	0	21	0	0
4	C	27	0	21	1	0
4	D	45	0	35	3	0
5	B	14	0	13	2	0
6	A	128	0	0	1	0
6	B	97	0	0	0	0
6	C	104	0	0	0	0
6	D	115	0	0	1	0
All	All	4955	0	4433	30	0

The all-atom clashscore is defined as the number of clashes found per 1000 atoms (including hydrogen atoms). The all-atom clashscore for this structure is 3.

All (30) close contacts within the same asymmetric unit are listed below, sorted by their clash magnitude.

Atom-1	Atom-2	Interatomic distance (Å)	Clash overlap (Å)
1:B:80:LYS:HB2	1:B:147:GLU:HG3	1.56	0.88
1:B:60:LYS:HD2	1:B:162:SER:O	1.80	0.80
1:D:31:THR:HB	4:D:164:BEN:H5	1.69	0.74
1:D:139:GLN:NE2	6:D:318:HOH:O	2.22	0.72
1:C:60:LYS:HD2	1:C:162:SER:O	1.90	0.71
1:D:61:GLN:HE21	1:D:63:GLN:HE22	1.46	0.64
1:A:139:GLN:NE2	6:A:212:HOH:O	2.31	0.63
1:A:114:ARG:HD3	1:A:118:GLU:OE1	2.00	0.60
1:D:74:LEU:CD1	1:D:114:ARG:HB3	2.35	0.56
1:A:127:ASN:H	3:A:301:L9R:H12A	1.71	0.56
1:A:87:LEU:HD21	3:A:301:L9R:H44	1.88	0.56
1:A:65:ASN:HA	1:A:126:VAL:O	2.06	0.56
1:D:31:THR:CB	4:D:164:BEN:H5	2.35	0.55
1:B:70:PHE:CE2	1:B:111:PHE:CZ	2.96	0.53
1:A:65:ASN:HD22	1:A:127:ASN:HA	1.73	0.53
1:B:70:PHE:HE2	1:B:111:PHE:CZ	2.27	0.52
1:D:74:LEU:HD11	1:D:114:ARG:HB3	1.93	0.50
1:D:131:LEU:HD21	3:D:301:L9R:H43	1.94	0.49

Continued on next page...

Continued from previous page...

Atom-1	Atom-2	Interatomic distance (Å)	Clash overlap (Å)
1:B:109:PHE:HD2	1:B:111:PHE:HB2	1.78	0.49
1:B:109:PHE:CD2	1:B:111:PHE:HB2	2.49	0.48
1:C:80:LYS:HB2	1:C:147:GLU:HG3	1.96	0.48
1:A:47:PRO:O	4:C:163:BEN:H5	2.16	0.45
1:A:88:MET:HG2	1:A:93:SER:HA	1.98	0.45
1:A:99:TYR:HA	1:A:100:PRO:HD3	1.90	0.45
1:D:51:PHE:HZ	1:D:155:ALA:HB2	1.83	0.44
5:B:201:NDG:H8C1	5:B:201:NDG:H2	1.81	0.43
1:D:54:SER:HB2	4:D:167:BEN:H3	2.02	0.42
1:B:88:MET:HG3	5:B:201:NDG:H8C2	2.03	0.41
1:A:62:ILE:HD12	1:A:133:VAL:CG2	2.51	0.41
1:D:85:ILE:HG12	1:D:142:LEU:HD23	2.02	0.40

There are no symmetry-related clashes.

5.3 Torsion angles ⓘ

5.3.1 Protein backbone ⓘ

In the following table, the Percentiles column shows the percent Ramachandran outliers of the chain as a percentile score with respect to all X-ray entries followed by that with respect to entries of similar resolution.

The Analysed column shows the number of residues for which the backbone conformation was analysed, and the total number of residues.

Mol	Chain	Analysed	Favoured	Allowed	Outliers	Percentiles	
1	A	136/162 (84%)	132 (97%)	4 (3%)	0	100	100
1	B	128/162 (79%)	126 (98%)	2 (2%)	0	100	100
1	C	128/162 (79%)	125 (98%)	3 (2%)	0	100	100
1	D	128/162 (79%)	125 (98%)	3 (2%)	0	100	100
All	All	520/648 (80%)	508 (98%)	12 (2%)	0	100	100

There are no Ramachandran outliers to report.

5.3.2 Protein sidechains ⓘ

In the following table, the Percentiles column shows the percent sidechain outliers of the chain as a percentile score with respect to all X-ray entries followed by that with respect to entries of similar

resolution.

The Analysed column shows the number of residues for which the sidechain conformation was analysed, and the total number of residues.

Mol	Chain	Analysed	Rotameric	Outliers	Percentiles	
1	A	120/139 (86%)	119 (99%)	1 (1%)	86	76
1	B	114/139 (82%)	111 (97%)	3 (3%)	54	25
1	C	114/139 (82%)	111 (97%)	3 (3%)	54	25
1	D	114/139 (82%)	109 (96%)	5 (4%)	35	9
All	All	462/556 (83%)	450 (97%)	12 (3%)	54	25

All (12) residues with a non-rotameric sidechain are listed below:

Mol	Chain	Res	Type
1	A	132	ASP
1	B	45	CYS
1	B	79	ARG
1	B	111	PHE
1	C	45	CYS
1	C	57	GLN
1	C	147	GLU
1	D	45	CYS
1	D	60	LYS
1	D	111	PHE
1	D	114	ARG
1	D	142	LEU

Some sidechains can be flipped to improve hydrogen bonding and reduce clashes. All (12) such sidechains are listed below:

Mol	Chain	Res	Type
1	A	49	GLN
1	A	65	ASN
1	A	139	GLN
1	B	49	GLN
1	B	57	GLN
1	B	63	GLN
1	B	139	GLN
1	C	49	GLN
1	C	139	GLN
1	D	43	GLN
1	D	49	GLN

Continued on next page...

Continued from previous page...

Mol	Chain	Res	Type
1	D	61	GLN

5.3.3 RNA ⓘ

There are no RNA molecules in this entry.

5.4 Non-standard residues in protein, DNA, RNA chains ⓘ

There are no non-standard protein/DNA/RNA residues in this entry.

5.5 Carbohydrates ⓘ

There are no carbohydrates in this entry.

5.6 Ligand geometry ⓘ

26 ligands are modelled in this entry.

In the following table, the Counts columns list the number of bonds (or angles) for which Mogul statistics could be retrieved, the number of bonds (or angles) that are observed in the model and the number of bonds (or angles) that are defined in the chemical component dictionary. The Link column lists molecule types, if any, to which the group is linked. The Z score for a bond length (or angle) is the number of standard deviations the observed value is removed from the expected value. A bond length (or angle) with $|Z| > 2$ is considered an outlier worth inspection. RMSZ is the root-mean-square of all Z scores of the bond lengths (or angles).

Mol	Type	Chain	Res	Link	Bond lengths			Bond angles		
					Counts	RMSZ	$\# Z > 2$	Counts	RMSZ	$\# Z > 2$
4	BEN	A	163	-	9,9,9	1.22	1 (11%)	9,11,11	1.31	1 (11%)
4	BEN	A	164	-	9,9,9	1.32	1 (11%)	9,11,11	0.90	0
4	BEN	A	165	-	9,9,9	1.26	1 (11%)	9,11,11	1.31	1 (11%)
4	BEN	A	166	-	9,9,9	1.43	1 (11%)	9,11,11	0.94	0
4	BEN	A	167	-	9,9,9	1.61	1 (11%)	9,11,11	0.98	1 (11%)
2	NAG	A	201	1	14,14,15	0.57	0	15,19,21	0.97	0
2	NAG	A	202	1	14,14,15	0.60	0	15,19,21	1.29	2 (13%)
3	L9R	A	301	-	53,53,53	1.07	3 (5%)	57,61,61	0.94	2 (3%)
4	BEN	B	163	-	9,9,9	1.53	1 (11%)	9,11,11	0.94	1 (11%)
4	BEN	B	164	-	9,9,9	1.31	1 (11%)	9,11,11	1.13	1 (11%)

Mol	Type	Chain	Res	Link	Bond lengths			Bond angles		
					Counts	RMSZ	# Z > 2	Counts	RMSZ	# Z > 2
4	BEN	B	165	-	9,9,9	1.42	1 (11%)	9,11,11	0.59	0
5	NDG	B	201	1	14,14,15	0.44	0	15,19,21	1.32	2 (13%)
2	NAG	B	202	1	14,14,15	0.68	1 (7%)	15,19,21	0.95	1 (6%)
4	BEN	C	163	-	9,9,9	1.48	1 (11%)	9,11,11	0.74	0
4	BEN	C	164	-	9,9,9	1.39	1 (11%)	9,11,11	0.92	1 (11%)
4	BEN	C	165	-	9,9,9	1.47	1 (11%)	9,11,11	0.93	1 (11%)
2	NAG	C	201	1	14,14,15	0.62	0	15,19,21	0.98	1 (6%)
2	NAG	C	202	1	14,14,15	0.64	0	15,19,21	0.62	0
4	BEN	D	163	-	9,9,9	1.43	1 (11%)	9,11,11	1.21	1 (11%)
4	BEN	D	164	-	9,9,9	1.54	1 (11%)	9,11,11	0.93	1 (11%)
4	BEN	D	165	-	9,9,9	1.44	1 (11%)	9,11,11	0.65	0
4	BEN	D	166	-	9,9,9	1.50	1 (11%)	9,11,11	0.63	0
4	BEN	D	167	-	9,9,9	1.42	1 (11%)	9,11,11	0.85	1 (11%)
2	NAG	D	201	1	14,14,15	0.59	0	15,19,21	1.24	1 (6%)
2	NAG	D	202	1	14,14,15	0.64	0	15,19,21	0.84	0
3	L9R	D	301	-	53,53,53	1.10	3 (5%)	57,61,61	0.94	2 (3%)

In the following table, the Chirals column lists the number of chiral outliers, the number of chiral centers analysed, the number of these observed in the model and the number defined in the chemical component dictionary. Similar counts are reported in the Torsion and Rings columns. '-' means no outliers of that kind were identified.

Mol	Type	Chain	Res	Link	Chirals	Torsions	Rings
4	BEN	A	163	-	-	0/4/4/4	0/1/1/1
4	BEN	A	164	-	-	0/4/4/4	0/1/1/1
4	BEN	A	165	-	-	0/4/4/4	0/1/1/1
4	BEN	A	166	-	-	0/4/4/4	0/1/1/1
4	BEN	A	167	-	-	0/4/4/4	0/1/1/1
2	NAG	A	201	1	-	0/6/23/26	0/1/1/1
2	NAG	A	202	1	-	0/6/23/26	0/1/1/1
3	L9R	A	301	-	-	0/57/57/57	0/0/0/0
4	BEN	B	163	-	-	0/4/4/4	0/1/1/1
4	BEN	B	164	-	-	0/4/4/4	0/1/1/1
4	BEN	B	165	-	-	0/4/4/4	0/1/1/1
5	NDG	B	201	1	-	0/6/23/26	0/1/1/1
2	NAG	B	202	1	-	0/6/23/26	0/1/1/1
4	BEN	C	163	-	-	0/4/4/4	0/1/1/1
4	BEN	C	164	-	-	0/4/4/4	0/1/1/1
4	BEN	C	165	-	-	0/4/4/4	0/1/1/1

Continued on next page...

Continued from previous page...

Mol	Type	Chain	Res	Link	Chirals	Torsions	Rings
2	NAG	C	201	1	-	0/6/23/26	0/1/1/1
2	NAG	C	202	1	-	0/6/23/26	0/1/1/1
4	BEN	D	163	-	-	0/4/4/4	0/1/1/1
4	BEN	D	164	-	-	0/4/4/4	0/1/1/1
4	BEN	D	165	-	-	0/4/4/4	0/1/1/1
4	BEN	D	166	-	-	0/4/4/4	0/1/1/1
4	BEN	D	167	-	-	0/4/4/4	0/1/1/1
2	NAG	D	201	1	-	0/6/23/26	0/1/1/1
2	NAG	D	202	1	-	0/6/23/26	0/1/1/1
3	L9R	D	301	-	-	0/57/57/57	0/0/0/0

All (23) bond length outliers are listed below:

Mol	Chain	Res	Type	Atoms	Z	Observed(Å)	Ideal(Å)
4	A	167	BEN	C1-C	-4.50	1.40	1.47
4	D	164	BEN	C1-C	-4.29	1.40	1.47
4	C	163	BEN	C1-C	-4.05	1.40	1.47
4	B	163	BEN	C1-C	-4.01	1.40	1.47
4	D	166	BEN	C1-C	-3.88	1.41	1.47
4	A	166	BEN	C1-C	-3.80	1.41	1.47
4	C	165	BEN	C1-C	-3.78	1.41	1.47
4	D	165	BEN	C1-C	-3.77	1.41	1.47
4	D	167	BEN	C1-C	-3.74	1.41	1.47
4	C	164	BEN	C1-C	-3.59	1.41	1.47
4	B	165	BEN	C1-C	-3.53	1.41	1.47
4	D	163	BEN	C1-C	-3.53	1.41	1.47
4	A	164	BEN	C1-C	-3.40	1.41	1.47
4	B	164	BEN	C1-C	-3.20	1.42	1.47
4	A	165	BEN	C1-C	-3.19	1.42	1.47
4	A	163	BEN	C1-C	-2.79	1.42	1.47
2	B	202	NAG	C1-C2	2.26	1.55	1.52
3	D	301	L9R	C40-C39	3.63	1.52	1.31
3	A	301	L9R	C40-C39	3.73	1.53	1.31
3	A	301	L9R	O2-C31	4.14	1.46	1.34
3	A	301	L9R	O3-C11	4.30	1.46	1.33
3	D	301	L9R	O2-C31	4.33	1.47	1.34
3	D	301	L9R	O3-C11	4.43	1.46	1.33

All (21) bond angle outliers are listed below:

Mol	Chain	Res	Type	Atoms	Z	Observed(°)	Ideal(°)
4	D	163	BEN	C6-C1-C	-2.42	117.60	120.67

Continued on next page...

Continued from previous page...

Mol	Chain	Res	Type	Atoms	Z	Observed(°)	Ideal(°)
2	B	202	NAG	C2-N2-C7	-2.18	120.23	123.04
2	A	202	NAG	O7-C7-C8	-2.00	118.39	122.06
4	D	164	BEN	C1-C-N2	2.08	121.42	118.11
4	B	163	BEN	C1-C-N2	2.21	121.64	118.11
2	C	201	NAG	C4-C3-C2	2.25	114.73	111.23
4	A	167	BEN	C1-C-N2	2.26	121.72	118.11
5	B	201	NDG	C2-N2-C7	2.30	126.00	123.04
4	D	167	BEN	C1-C-N2	2.31	121.79	118.11
4	A	163	BEN	C1-C-N2	2.31	121.80	118.11
3	A	301	L9R	O3-C11-C12	2.40	119.22	111.90
4	C	165	BEN	C1-C-N2	2.45	122.03	118.11
4	C	164	BEN	C1-C-N2	2.57	122.22	118.11
3	D	301	L9R	O3-C11-C12	2.71	120.16	111.90
4	B	164	BEN	C1-C-N2	3.06	123.00	118.11
2	A	202	NAG	O7-C7-N2	3.37	128.73	121.86
5	B	201	NDG	C1-O-C5	3.41	116.58	112.25
4	A	165	BEN	C1-C-N2	3.66	123.96	118.11
3	A	301	L9R	O2-C31-C32	3.78	119.74	111.53
3	D	301	L9R	O2-C31-C32	3.80	119.80	111.53
2	D	201	NAG	C1-O5-C5	3.98	117.29	112.25

There are no chirality outliers.

There are no torsion outliers.

There are no ring outliers.

6 monomers are involved in 9 short contacts:

Mol	Chain	Res	Type	Clashes	Symm-Clashes
3	A	301	L9R	2	0
5	B	201	NDG	2	0
4	C	163	BEN	1	0
4	D	164	BEN	2	0
4	D	167	BEN	1	0
3	D	301	L9R	1	0

5.7 Other polymers ⓘ

There are no such residues in this entry.

5.8 Polymer linkage issues ⓘ

There are no chain breaks in this entry.

6 Fit of model and data

6.1 Protein, DNA and RNA chains

In the following table, the column labelled ‘#RSRZ> 2’ contains the number (and percentage) of RSRZ outliers, followed by percent RSRZ outliers for the chain as percentile scores relative to all X-ray entries and entries of similar resolution. The OWAB column contains the minimum, median, 95th percentile and maximum values of the occupancy-weighted average B-factor per residue. The column labelled ‘Q< 0.9’ lists the number of (and percentage) of residues with an average occupancy less than 0.9.

Mol	Chain	Analysed	<RSRZ>	#RSRZ>2	OWAB(Å ²)	Q<0.9
1	A	137/162 (84%)	0.26	6 (4%) 38 37	22, 32, 52, 68	0
1	B	131/162 (80%)	0.66	16 (12%) 5 4	25, 37, 60, 68	0
1	C	131/162 (80%)	0.32	10 (7%) 17 15	23, 33, 57, 62	0
1	D	131/162 (80%)	0.19	5 (3%) 44 44	22, 31, 49, 65	0
All	All	530/648 (81%)	0.36	37 (6%) 19 17	22, 33, 56, 68	0

All (37) RSRZ outliers are listed below:

Mol	Chain	Res	Type	RSRZ
1	A	26	GLY	6.7
1	B	91	GLY	5.0
1	C	79	ARG	4.8
1	A	105	ASP	4.7
1	D	26	GLY	4.5
1	B	109	PHE	4.4
1	B	112	CYS	4.2
1	C	113	GLY	4.2
1	B	79	ARG	4.2
1	B	110	SER	3.9
1	C	109	PHE	3.7
1	D	109	PHE	3.7
1	A	106	GLN	3.6
1	B	147	GLU	3.4
1	A	104	GLU	3.3
1	B	99	TYR	3.3
1	C	112	CYS	3.3
1	C	91	GLY	3.3
1	B	148	ASN	3.2
1	B	26	GLY	3.1
1	B	111	PHE	3.1

Continued on next page...

Continued from previous page...

Mol	Chain	Res	Type	RSRZ
1	B	80	LYS	2.9
1	B	77	ASP	2.9
1	C	90	LYS	2.9
1	D	102	CYS	2.8
1	B	127	ASN	2.7
1	B	76	GLN	2.6
1	A	99	TYR	2.5
1	B	75	ARG	2.5
1	C	85	ILE	2.3
1	C	162	SER	2.3
1	B	90	LYS	2.3
1	C	115	ARG	2.2
1	A	108	LYS	2.2
1	D	111	PHE	2.1
1	C	111	PHE	2.0
1	D	142	LEU	2.0

6.2 Non-standard residues in protein, DNA, RNA chains [i](#)

There are no non-standard protein/DNA/RNA residues in this entry.

6.3 Carbohydrates [i](#)

There are no carbohydrates in this entry.

6.4 Ligands [i](#)

In the following table, the Atoms column lists the number of modelled atoms in the group and the number defined in the chemical component dictionary. LLDF column lists the quality of electron density of the group with respect to its neighbouring residues in protein, DNA or RNA chains. The B-factors column lists the minimum, median, 95th percentile and maximum values of B factors of atoms in the group. The column labelled 'Q< 0.9' lists the number of atoms with occupancy less than 0.9.

Mol	Type	Chain	Res	Atoms	RSCC	RSR	LLDF	B-factors(Å ²)	Q<0.9
2	NAG	A	201	14/15	0.77	0.23	7.97	45,56,63,65	0
4	BEN	A	167	9/9	0.62	0.30	6.75	53,63,66,68	0
2	NAG	D	201	14/15	0.77	0.21	5.79	43,56,64,69	0
4	BEN	A	166	9/9	0.79	0.19	5.30	37,44,50,51	0
3	L9R	A	301	54/54	0.61	0.27	5.29	51,74,104,106	0

Continued on next page...

Continued from previous page...

Mol	Type	Chain	Res	Atoms	RSCC	RSR	LLDF	B-factors(\AA^2)	Q<0.9
4	BEN	D	167	9/9	0.62	0.24	4.75	48,55,58,60	0
4	BEN	D	166	9/9	0.65	0.20	3.89	60,65,67,68	0
4	BEN	B	164	9/9	0.76	0.16	3.56	44,46,51,56	0
3	L9R	D	301	54/54	0.70	0.21	2.84	46,73,94,96	0
5	NDG	B	201	14/15	0.77	0.40	2.77	76,83,89,90	0
4	BEN	D	165	9/9	0.81	0.22	2.72	52,56,57,58	0
4	BEN	D	163	9/9	0.98	0.16	2.27	21,23,25,26	0
4	BEN	B	165	9/9	0.66	0.21	1.73	48,53,54,55	0
4	BEN	C	165	9/9	0.86	0.12	1.57	36,37,42,42	0
4	BEN	D	164	9/9	0.55	0.22	1.50	63,66,69,69	0
4	BEN	C	164	9/9	0.87	0.15	1.27	48,52,53,55	0
4	BEN	A	164	9/9	0.94	0.14	0.72	23,26,27,27	0
4	BEN	A	163	9/9	0.95	0.14	0.68	23,24,25,27	0
4	BEN	B	163	9/9	0.85	0.19	0.37	40,45,47,47	0
4	BEN	A	165	9/9	0.93	0.12	0.31	23,23,27,29	0
4	BEN	C	163	9/9	0.94	0.17	0.30	35,36,39,39	0
2	NAG	C	202	14/15	0.98	0.10	-0.23	21,23,24,26	0
2	NAG	D	202	14/15	0.97	0.09	-0.44	19,22,27,27	0
2	NAG	A	202	14/15	0.98	0.09	-0.75	22,23,27,28	0
2	NAG	B	202	14/15	0.97	0.08	-0.94	20,23,26,26	0
2	NAG	C	201	14/15	0.53	0.28	-	68,78,80,81	0

6.5 Other polymers

There are no such residues in this entry.