



Full wwPDB X-ray Structure Validation Report ⓘ

Feb 1, 2016 – 10:30 AM GMT

PDB ID : 3M8Q
Title : HIV-1 RT with AMINOPYRIMIDINE NNRTI
Authors : Harris, S.F.; Villasenor, A.
Deposited on : 2010-03-18
Resolution : 2.70 Å(reported)

This is a Full wwPDB X-ray Structure Validation Report for a publicly released PDB entry.
We welcome your comments at validation@mail.wwpdb.org
A user guide is available at
<http://wwpdb.org/validation/2016/XrayValidationReportHelp>
with specific help available everywhere you see the ⓘ symbol.

The following versions of software and data (see [references ⓘ](#)) were used in the production of this report:

MolProbity : 4.02b-467
Mogul : 1.7 (RC4), CSD as536be (2015)
Xtriage (Phenix) : 1.9-1692
EDS : rb-20026688
Percentile statistics : 20151230.v01 (using entries in the PDB archive December 30th 2015)
Refmac : 5.8.0135
CCP4 : 6.5.0
Ideal geometry (proteins) : Engh & Huber (2001)
Ideal geometry (DNA, RNA) : Parkinson et al. (1996)
Validation Pipeline (wwPDB-VP) : trunk26865

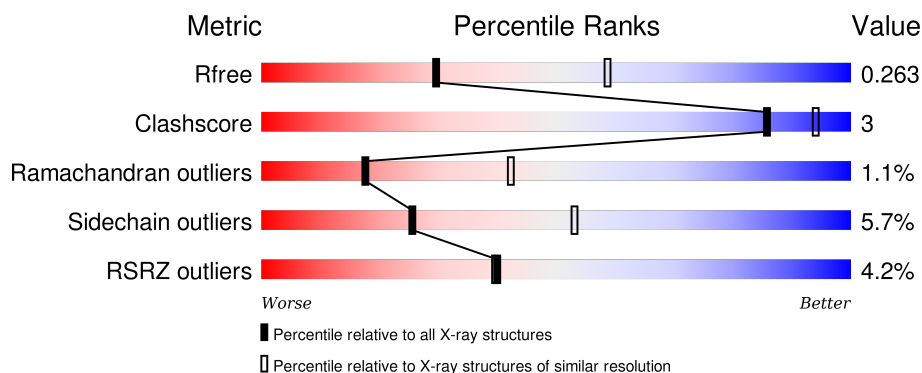
1 Overall quality at a glance

The following experimental techniques were used to determine the structure:

X-RAY DIFFRACTION

The reported resolution of this entry is 2.70 Å.

Percentile scores (ranging between 0-100) for global validation metrics of the entry are shown in the following graphic. The table shows the number of entries on which the scores are based.



Metric	Whole archive (#Entries)	Similar resolution (#Entries, resolution range(Å))
R_{free}	91344	2103 (2.70-2.70)
Clashscore	102246	2422 (2.70-2.70)
Ramachandran outliers	100387	2382 (2.70-2.70)
Sidechain outliers	100360	2382 (2.70-2.70)
RSRZ outliers	91569	2107 (2.70-2.70)

The table below summarises the geometric issues observed across the polymeric chains and their fit to the electron density. The red, orange, yellow and green segments on the lower bar indicate the fraction of residues that contain outliers for ≥ 3 , 2, 1 and 0 types of geometric quality criteria. A grey segment represents the fraction of residues that are not modelled. The numeric value for each fraction is indicated below the corresponding segment, with a dot representing fractions $\leq 5\%$. The upper red bar (where present) indicates the fraction of residues that have poor fit to the electron density. The numeric value is given above the bar.

Mol	Chain	Length	Quality of chain
1	A	561	<div> <div>4%</div> <div>86%</div> <div>12%</div> <div>...</div> </div>
2	B	440	<div> <div>4%</div> <div>80%</div> <div>10%</div> <div>10%</div> </div>

2 Entry composition [i](#)

There are 4 unique types of molecules in this entry. The entry contains 7926 atoms, of which 0 are hydrogens and 0 are deuteriums.

In the tables below, the ZeroOcc column contains the number of atoms modelled with zero occupancy, the AltConf column contains the number of residues with at least one atom in alternate conformation and the Trace column contains the number of residues modelled with at most 2 atoms.

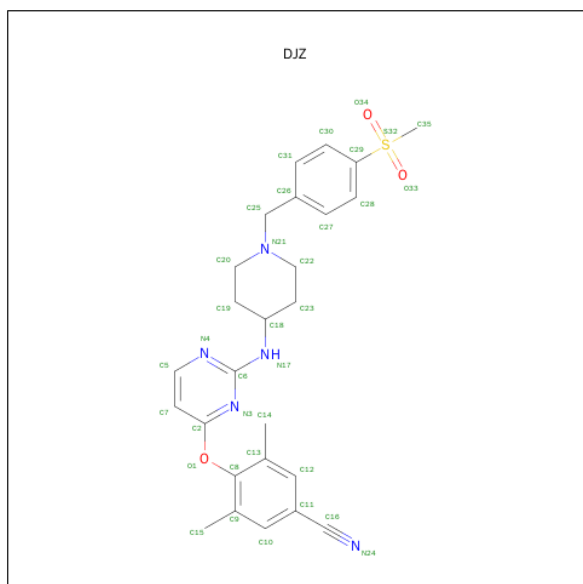
- Molecule 1 is a protein called Reverse transcriptase/ribonuclease H.

Mol	Chain	Residues	Atoms					ZeroOcc	AltConf	Trace
1	A	554	Total	C	N	O	S	0	1	0
			4511	2915	754	834	8			

- Molecule 2 is a protein called p51 RT.

Mol	Chain	Residues	Atoms					ZeroOcc	AltConf	Trace
2	B	398	Total	C	N	O	S	0	0	0
			3297	2152	539	599	7			

- Molecule 3 is 3,5-DIMETHYL-4-{{2-({1-[4-(METHYLSULFONYL)BENZYL]PIPERIDIN-4-YL} AMINO)PYRIMIDIN-4-YL} OXY} BENZONITRILE (three-letter code: DJZ) (formula: C₂₆H₂₉N₅O₃S).



Mol	Chain	Residues	Atoms					ZeroOcc	AltConf
3	A	1	Total	C	N	O	S	0	0
			35	26	5	3	1		

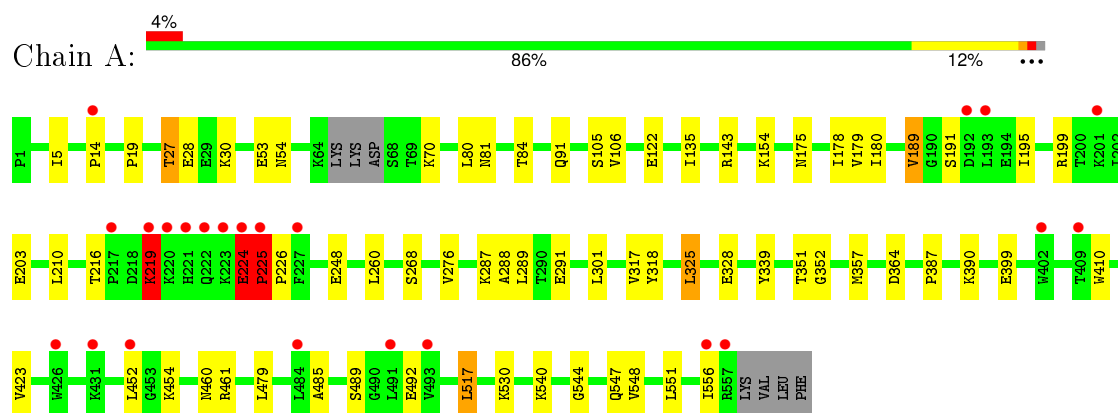
- Molecule 4 is water.

Mol	Chain	Residues	Atoms		ZeroOcc	AltConf
4	A	41	Total 41	O 41	0	0
4	B	42	Total 42	O 42	0	0

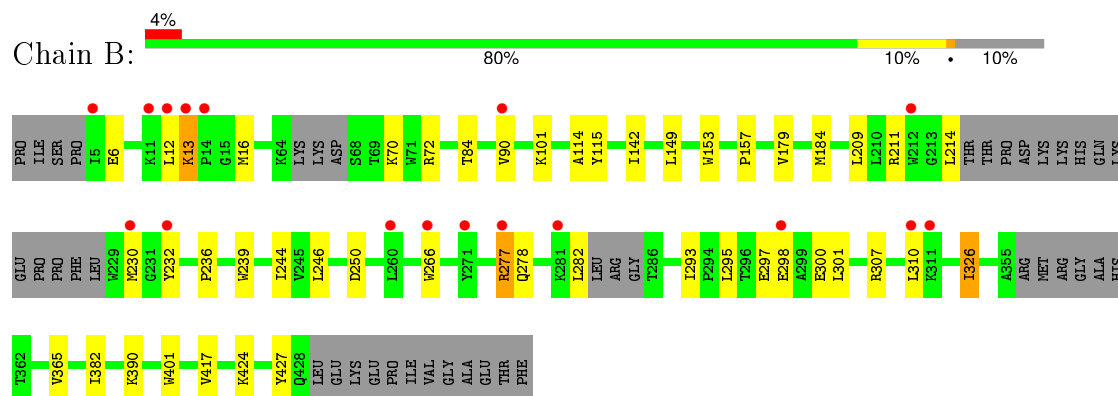
3 Residue-property plots

These plots are drawn for all protein, RNA and DNA chains in the entry. The first graphic for a chain summarises the proportions of errors displayed in the second graphic. The second graphic shows the sequence view annotated by issues in geometry and electron density. Residues are color-coded according to the number of geometric quality criteria for which they contain at least one outlier: green = 0, yellow = 1, orange = 2 and red = 3 or more. A red dot above a residue indicates a poor fit to the electron density ($RSRZ > 2$). Stretches of 2 or more consecutive residues without any outlier are shown as a green connector. Residues present in the sample, but not in the model, are shown in grey.

- Molecule 1: Reverse transcriptase/ribonuclease H



- Molecule 2: p51 RT



4 Data and refinement statistics

Property	Value	Source
Space group	C 2 2 21	Depositor
Cell constants a, b, c, α , β , γ	118.83Å 153.10Å 154.51Å 90.00° 90.00° 90.00°	Depositor
Resolution (Å)	47.09 – 2.70 47.10 – 2.70	Depositor EDS
% Data completeness (in resolution range)	98.5 (47.09-2.70) 98.5 (47.10-2.70)	Depositor EDS
R_{merge}	(Not available)	Depositor
R_{sym}	0.11	Depositor
$\langle I/\sigma(I) \rangle$ ¹	1.70 (at 2.69Å)	Xtriage
Refinement program	BUSTER 2.9.2	Depositor
R, R_{free}	0.219 , 0.252 0.225 , 0.263	Depositor DCC
R_{free} test set	1976 reflections (5.43%)	DCC
Wilson B-factor (Å ²)	62.3	Xtriage
Anisotropy	0.422	Xtriage
Bulk solvent k_{sol} (e/Å ³), B_{sol} (Å ²)	0.33 , 59.3	EDS
Estimated twinning fraction	No twinning to report.	Xtriage
L-test for twinning ²	$\langle L \rangle = 0.50$, $\langle L^2 \rangle = 0.33$	Xtriage
Outliers	0 of 38389 reflections	Xtriage
F_o, F_c correlation	0.94	EDS
Total number of atoms	7926	wwPDB-VP
Average B, all atoms (Å ²)	70.0	wwPDB-VP

Xtriage's analysis on translational NCS is as follows: *The largest off-origin peak in the Patterson function is 4.13% of the height of the origin peak. No significant pseudotranslation is detected.*

¹Intensities estimated from amplitudes.

²Theoretical values of $\langle |L| \rangle$, $\langle L^2 \rangle$ for acentric reflections are 0.5, 0.375 respectively for untwinned datasets, and 0.333, 0.2 for perfectly twinned datasets.

5 Model quality [i](#)

5.1 Standard geometry [i](#)

Bond lengths and bond angles in the following residue types are not validated in this section: DJZ

The Z score for a bond length (or angle) is the number of standard deviations the observed value is removed from the expected value. A bond length (or angle) with $|Z| > 5$ is considered an outlier worth inspection. RMSZ is the root-mean-square of all Z scores of the bond lengths (or angles).

Mol	Chain	Bond lengths		Bond angles	
		RMSZ	# Z >5	RMSZ	# Z >5
1	A	0.40	0/4628	0.64	1/6289 (0.0%)
2	B	0.40	0/3390	0.64	1/4607 (0.0%)
All	All	0.40	0/8018	0.64	2/10896 (0.0%)

There are no bond length outliers.

All (2) bond angle outliers are listed below:

Mol	Chain	Res	Type	Atoms	Z	Observed(°)	Ideal(°)
2	B	211	ARG	N-CA-C	-5.49	96.19	111.00
1	A	225	PRO	N-CA-C	5.22	125.66	112.10

There are no chirality outliers.

There are no planarity outliers.

5.2 Too-close contacts [i](#)

In the following table, the Non-H and H(model) columns list the number of non-hydrogen atoms and hydrogen atoms in the chain respectively. The H(added) column lists the number of hydrogen atoms added and optimized by MolProbity. The Clashes column lists the number of clashes within the asymmetric unit, whereas Symm-Clashes lists symmetry related clashes.

Mol	Chain	Non-H	H(model)	H(added)	Clashes	Symm-Clashes
1	A	4511	0	4545	29	0
2	B	3297	0	3313	16	0
3	A	35	0	29	2	0
4	A	41	0	0	0	0
4	B	42	0	0	0	0
All	All	7926	0	7887	44	0

The all-atom clashscore is defined as the number of clashes found per 1000 atoms (including hydrogen atoms). The all-atom clashscore for this structure is 3.

All (44) close contacts within the same asymmetric unit are listed below, sorted by their clash magnitude.

Atom-1	Atom-2	Interatomic distance (Å)	Clash overlap (Å)
1:A:224:GLU:HB2	1:A:225:PRO:HD2	1.56	0.88
1:A:224:GLU:HB2	1:A:225:PRO:CD	2.07	0.85
1:A:106:VAL:HG21	3:A:562:DJZ:H22	1.74	0.70
1:A:224:GLU:CB	1:A:225:PRO:HD2	2.32	0.58
1:A:460:ASN:HD21	1:A:461:ARG:HH11	1.51	0.58
2:B:246:LEU:HD12	2:B:307:ARG:HG3	1.86	0.58
1:A:225:PRO:CB	1:A:226:PRO:HD3	2.33	0.57
1:A:328:GLU:HG2	1:A:390:LYS:HB2	1.86	0.56
1:A:19:PRO:HG3	1:A:80:LEU:HB2	1.87	0.56
1:A:410:TRP:HB3	2:B:365:VAL:HG23	1.89	0.54
2:B:326:ILE:HD11	2:B:390:LYS:HG3	1.93	0.50
1:A:175:ASN:HB3	1:A:178:ILE:HG12	1.94	0.50
2:B:101:LYS:HD3	2:B:382:ILE:HG23	1.95	0.49
1:A:84:THR:HG23	1:A:154:LYS:HD3	1.96	0.48
1:A:325:LEU:HB3	1:A:387:PRO:HB3	1.96	0.47
1:A:288:ALA:HB3	1:A:291:GLU:HB2	1.97	0.47
1:A:364:ASP:HB3	1:A:423:VAL:HG13	1.98	0.46
1:A:81:ASN:HA	1:A:84:THR:HG22	1.98	0.46
2:B:114:ALA:HB2	2:B:214:LEU:HD11	1.98	0.46
1:A:485:ALA:O	1:A:489:SER:HB2	2.16	0.46
2:B:244:ILE:HB	2:B:310:LEU:HD22	1.98	0.45
2:B:12:LEU:O	2:B:13:LYS:HB2	2.16	0.45
1:A:225:PRO:HB3	1:A:226:PRO:HD3	1.97	0.45
2:B:209:LEU:HB3	2:B:214:LEU:HB2	1.98	0.45
1:A:199:ARG:HG2	1:A:219:LYS:HE2	1.97	0.45
1:A:479:LEU:HB3	1:A:517:LEU:HD13	1.99	0.45
2:B:115:TYR:HB3	2:B:149:LEU:HB2	1.99	0.45
2:B:84:THR:HG21	2:B:153:TRP:HZ2	1.82	0.44
2:B:278:GLN:HG2	2:B:298:GLU:HB2	1.99	0.44
1:A:318:TYR:CZ	3:A:562:DJZ:H20	2.53	0.44
1:A:225:PRO:CB	1:A:226:PRO:CD	2.95	0.43
1:A:54:ASN:HB3	1:A:143:ARG:HH21	1.82	0.43
2:B:157:PRO:HG3	2:B:184:MET:HA	2.00	0.43
1:A:492:GLU:HG2	1:A:530:LYS:HB2	2.01	0.43
1:A:27:THR:HG22	1:A:30:LYS:H	1.84	0.43
2:B:266:TRP:HZ2	2:B:427:TYR:CZ	2.37	0.43
1:A:544:GLY:O	1:A:548:VAL:HG23	2.18	0.42

Continued on next page...

Continued from previous page...

Atom-1	Atom-2	Interatomic distance (Å)	Clash overlap (Å)
2:B:266:TRP:CZ2	2:B:427:TYR:CZ	3.08	0.42
2:B:236:PRO:HA	2:B:239:TRP:CD2	2.54	0.42
1:A:339:TYR:CZ	1:A:352:GLY:HA3	2.55	0.42
1:A:28:GLU:HG2	1:A:135:ILE:HG12	2.02	0.42
1:A:180:ILE:HG12	1:A:189:VAL:HG13	2.02	0.42
2:B:365:VAL:HG11	2:B:401:TRP:HB2	2.02	0.40
1:A:268:SER:O	1:A:351:THR:HG22	2.22	0.40

There are no symmetry-related clashes.

5.3 Torsion angles [i](#)

5.3.1 Protein backbone [i](#)

In the following table, the Percentiles column shows the percent Ramachandran outliers of the chain as a percentile score with respect to all X-ray entries followed by that with respect to entries of similar resolution.

The Analysed column shows the number of residues for which the backbone conformation was analysed, and the total number of residues.

Mol	Chain	Analysed	Favoured	Allowed	Outliers	Percentiles	
1	A	551/561 (98%)	523 (95%)	22 (4%)	6 (1%)	17	42
2	B	388/440 (88%)	370 (95%)	14 (4%)	4 (1%)	19	45
All	All	939/1001 (94%)	893 (95%)	36 (4%)	10 (1%)	17	42

All (10) Ramachandran outliers are listed below:

Mol	Chain	Res	Type
1	A	224	GLU
1	A	225	PRO
2	B	13	LYS
1	A	195	ILE
1	A	14	PRO
1	A	219	LYS
2	B	16	MET
2	B	230	MET
2	B	277	ARG
1	A	556	ILE

5.3.2 Protein sidechains ⓘ

In the following table, the Percentiles column shows the percent sidechain outliers of the chain as a percentile score with respect to all X-ray entries followed by that with respect to entries of similar resolution.

The Analysed column shows the number of residues for which the sidechain conformation was analysed, and the total number of residues.

Mol	Chain	Analysed	Rotameric	Outliers	Percentiles	
1	A	493/501 (98%)	462 (94%)	31 (6%)	22	48
2	B	363/400 (91%)	345 (95%)	18 (5%)	30	60
All	All	856/901 (95%)	807 (94%)	49 (6%)	25	53

All (49) residues with a non-rotameric sidechain are listed below:

Mol	Chain	Res	Type
1	A	5	ILE
1	A	27	THR
1	A	53	GLU
1	A	70	LYS
1	A	91	GLN
1	A	105	SER
1	A	122	GLU
1	A	179	VAL
1	A	189	VAL
1	A	191	SER
1	A	203	GLU
1	A	210	LEU
1	A	216	THR
1	A	219	LYS
1	A	224	GLU
1	A	248	GLU
1	A	260	LEU
1	A	276	VAL
1	A	287	LYS
1	A	289	LEU
1	A	301	LEU
1	A	317	VAL
1	A	325	LEU
1	A	357	MET
1	A	399	GLU
1	A	452	LEU
1	A	454	LYS

Continued on next page...

Continued from previous page...

Mol	Chain	Res	Type
1	A	517	LEU
1	A	540	LYS
1	A	547	GLN
1	A	551	LEU
2	B	6	GLU
2	B	70	LYS
2	B	72	ARG
2	B	90	VAL
2	B	142	ILE
2	B	179	VAL
2	B	232	TYR
2	B	250	ASP
2	B	277	ARG
2	B	282	LEU
2	B	293	ILE
2	B	295	LEU
2	B	297	GLU
2	B	300	GLU
2	B	301	LEU
2	B	326	ILE
2	B	417	VAL
2	B	424	LYS

Some sidechains can be flipped to improve hydrogen bonding and reduce clashes. All (5) such sidechains are listed below:

Mol	Chain	Res	Type
1	A	198	HIS
1	A	334	GLN
1	A	428	GLN
2	B	151	GLN
2	B	182	GLN

5.3.3 RNA ⓘ

There are no RNA molecules in this entry.

5.4 Non-standard residues in protein, DNA, RNA chains ⓘ

There are no non-standard protein/DNA/RNA residues in this entry.

5.5 Carbohydrates [i](#)

There are no carbohydrates in this entry.

5.6 Ligand geometry [i](#)

1 ligand is modelled in this entry.

In the following table, the Counts columns list the number of bonds (or angles) for which Mogul statistics could be retrieved, the number of bonds (or angles) that are observed in the model and the number of bonds (or angles) that are defined in the chemical component dictionary. The Link column lists molecule types, if any, to which the group is linked. The Z score for a bond length (or angle) is the number of standard deviations the observed value is removed from the expected value. A bond length (or angle) with $|Z| > 2$ is considered an outlier worth inspection. RMSZ is the root-mean-square of all Z scores of the bond lengths (or angles).

Mol	Type	Chain	Res	Link	Bond lengths			Bond angles		
					Counts	RMSZ	$\# Z > 2$	Counts	RMSZ	$\# Z > 2$
3	DJZ	A	562	-	38,38,38	3.15	19 (50%)	54,54,54	3.37	21 (38%)

In the following table, the Chirals column lists the number of chiral outliers, the number of chiral centers analysed, the number of these observed in the model and the number defined in the chemical component dictionary. Similar counts are reported in the Torsion and Rings columns. '-' means no outliers of that kind were identified.

Mol	Type	Chain	Res	Link	Chirals	Torsions	Rings
3	DJZ	A	562	-	-	0/20/30/30	0/4/4/4

All (19) bond length outliers are listed below:

Mol	Chain	Res	Type	Atoms	Z	Observed(Å)	Ideal(Å)
3	A	562	DJZ	C31-C30	2.09	1.42	1.38
3	A	562	DJZ	C27-C26	2.27	1.43	1.38
3	A	562	DJZ	C28-C27	2.28	1.42	1.38
3	A	562	DJZ	C15-C9	2.31	1.55	1.51
3	A	562	DJZ	C6-N17	2.51	1.37	1.34
3	A	562	DJZ	C8-C9	2.71	1.45	1.40
3	A	562	DJZ	C23-C18	2.82	1.59	1.51
3	A	562	DJZ	C8-C13	2.91	1.45	1.40
3	A	562	DJZ	C5-N4	3.16	1.41	1.34
3	A	562	DJZ	C10-C11	3.37	1.45	1.39
3	A	562	DJZ	C10-C9	3.80	1.45	1.39
3	A	562	DJZ	C12-C11	4.01	1.47	1.39
3	A	562	DJZ	C2-N3	4.78	1.42	1.33

Continued on next page...

Continued from previous page...

Mol	Chain	Res	Type	Atoms	Z	Observed(Å)	Ideal(Å)
3	A	562	DJZ	C7-C5	5.26	1.49	1.38
3	A	562	DJZ	C28-C29	5.78	1.48	1.38
3	A	562	DJZ	C30-C29	5.81	1.48	1.38
3	A	562	DJZ	C31-C26	6.54	1.52	1.38
3	A	562	DJZ	C29-S32	6.66	1.85	1.77
3	A	562	DJZ	C6-N4	6.79	1.43	1.34

All (21) bond angle outliers are listed below:

Mol	Chain	Res	Type	Atoms	Z	Observed(°)	Ideal(°)
3	A	562	DJZ	O33-S32-C29	-13.05	96.87	108.31
3	A	562	DJZ	N4-C6-N3	-6.13	120.14	126.67
3	A	562	DJZ	C28-C27-C26	-3.89	115.71	121.04
3	A	562	DJZ	C20-C19-C18	-3.73	104.38	110.37
3	A	562	DJZ	C23-C18-N17	-3.34	104.86	110.55
3	A	562	DJZ	C14-C13-C12	-3.23	113.49	119.49
3	A	562	DJZ	O34-S32-O33	-2.87	111.74	117.73
3	A	562	DJZ	C10-C11-C16	-2.75	116.03	119.51
3	A	562	DJZ	C7-C2-N3	-2.63	116.37	123.12
3	A	562	DJZ	O34-S32-C29	-2.44	106.17	108.31
3	A	562	DJZ	C25-C26-C27	-2.20	116.62	120.78
3	A	562	DJZ	C30-C29-S32	2.03	121.59	119.59
3	A	562	DJZ	N17-C6-N4	2.26	120.17	116.95
3	A	562	DJZ	C23-C18-C19	2.34	114.81	110.82
3	A	562	DJZ	O1-C2-C7	3.09	121.80	115.61
3	A	562	DJZ	C12-C11-C16	3.33	123.72	119.51
3	A	562	DJZ	C12-C13-C8	3.37	122.80	117.78
3	A	562	DJZ	C5-C7-C2	3.49	119.19	115.84
3	A	562	DJZ	C27-C28-C29	5.75	125.84	119.48
3	A	562	DJZ	C6-N3-C2	7.48	125.14	114.96
3	A	562	DJZ	O34-S32-C35	10.75	126.10	108.53

There are no chirality outliers.

There are no torsion outliers.

There are no ring outliers.

1 monomer is involved in 2 short contacts:

Mol	Chain	Res	Type	Clashes	Symm-Clashes
3	A	562	DJZ	2	0

5.7 Other polymers

There are no such residues in this entry.

5.8 Polymer linkage issues

There are no chain breaks in this entry.

6 Fit of model and data ⓘ

6.1 Protein, DNA and RNA chains ⓘ

In the following table, the column labelled ‘#RSRZ> 2’ contains the number (and percentage) of RSRZ outliers, followed by percent RSRZ outliers for the chain as percentile scores relative to all X-ray entries and entries of similar resolution. The OWAB column contains the minimum, median, 95th percentile and maximum values of the occupancy-weighted average B-factor per residue. The column labelled ‘Q< 0.9’ lists the number of (and percentage) of residues with an average occupancy less than 0.9.

Mol	Chain	Analysed	<RSRZ>	#RSRZ>2			OWAB(Å ²)	Q<0.9
1	A	554/561 (98%)	0.36	23 (4%)	40	39	42, 70, 100, 138	0
2	B	398/440 (90%)	0.33	17 (4%)	39	38	43, 65, 105, 123	0
All	All	952/1001 (95%)	0.35	40 (4%)	40	39	42, 68, 103, 138	0

All (40) RSRZ outliers are listed below:

Mol	Chain	Res	Type	RSRZ
1	A	222	GLN	7.4
2	B	14	PRO	6.3
2	B	12	LEU	5.6
2	B	13	LYS	5.0
1	A	220	LYS	4.7
1	A	219	LYS	4.5
1	A	221	HIS	4.3
2	B	11	LYS	3.6
2	B	232	TYR	3.4
2	B	298	GLU	3.3
1	A	223	LYS	3.2
1	A	426	TRP	3.1
2	B	230	MET	3.0
1	A	227	PHE	3.0
1	A	491	LEU	2.9
2	B	90	VAL	2.8
1	A	225	PRO	2.8
1	A	557	ARG	2.8
2	B	266	TRP	2.8
1	A	556	ILE	2.6
1	A	224	GLU	2.5
2	B	277	ARG	2.5
2	B	311	LYS	2.4
2	B	310	LEU	2.4

Continued on next page...

Continued from previous page...

Mol	Chain	Res	Type	RSRZ
2	B	271	TYR	2.3
1	A	402	TRP	2.3
1	A	201	LYS	2.3
1	A	193	LEU	2.3
1	A	452	LEU	2.2
1	A	493	VAL	2.2
2	B	212	TRP	2.2
1	A	431	LYS	2.1
1	A	14	PRO	2.1
1	A	217	PRO	2.1
2	B	260	LEU	2.1
2	B	5	ILE	2.1
1	A	484	LEU	2.0
2	B	281	LYS	2.0
1	A	409	THR	2.0
1	A	192	ASP	2.0

6.2 Non-standard residues in protein, DNA, RNA chains [i](#)

There are no non-standard protein/DNA/RNA residues in this entry.

6.3 Carbohydrates [i](#)

There are no carbohydrates in this entry.

6.4 Ligands [i](#)

In the following table, the Atoms column lists the number of modelled atoms in the group and the number defined in the chemical component dictionary. LLDF column lists the quality of electron density of the group with respect to its neighbouring residues in protein, DNA or RNA chains. The B-factors column lists the minimum, median, 95th percentile and maximum values of B factors of atoms in the group. The column labelled 'Q < 0.9' lists the number of atoms with occupancy less than 0.9.

Mol	Type	Chain	Res	Atoms	RSCC	RSR	LLDF	B-factors(Å ²)	Q<0.9
3	DJZ	A	562	35/35	0.96	0.25	0.35	49,54,70,73	0

6.5 Other polymers [i](#)

There are no such residues in this entry.