



# Full wwPDB X-ray Structure Validation Report ⓘ

Feb 1, 2016 – 10:31 AM GMT

PDB ID : 3MAP  
Title : Crystal structure of homodimeric R132H mutant of human cytosolic NADP(+)-dependent isocitrate dehydrogenase in complex with NADP and isocitrate  
Authors : Yang, B.; Peng, Y.; Ding, J.  
Deposited on : 2010-03-24  
Resolution : 2.80 Å(reported)

This is a Full wwPDB X-ray Structure Validation Report for a publicly released PDB entry.  
We welcome your comments at [validation@mail.wwpdb.org](mailto:validation@mail.wwpdb.org)  
A user guide is available at  
<http://wwpdb.org/validation/2016/XrayValidationReportHelp>  
with specific help available everywhere you see the ⓘ symbol.

---

The following versions of software and data (see [references ⓘ](#)) were used in the production of this report:

MolProbity : 4.02b-467  
Mogul : 1.7 (RC4), CSD as536be (2015)  
Xtriage (Phenix) : 1.9-1692  
EDS : rb-20026688  
Percentile statistics : 20151230.v01 (using entries in the PDB archive December 30th 2015)  
Refmac : 5.8.0135  
CCP4 : 6.5.0  
Ideal geometry (proteins) : Engh & Huber (2001)  
Ideal geometry (DNA, RNA) : Parkinson et al. (1996)  
Validation Pipeline (wwPDB-VP) : trunk26865

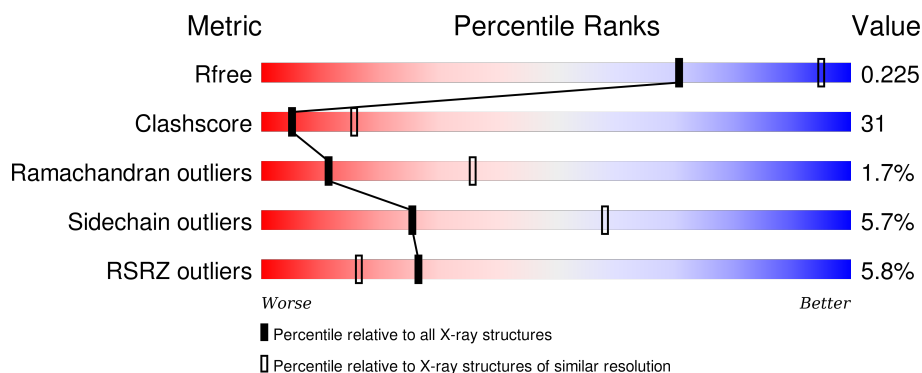
# 1 Overall quality at a glance

The following experimental techniques were used to determine the structure:

## *X-RAY DIFFRACTION*

The reported resolution of this entry is 2.80 Å.

Percentile scores (ranging between 0-100) for global validation metrics of the entry are shown in the following graphic. The table shows the number of entries on which the scores are based.



Metric	Whole archive (#Entries)	Similar resolution (#Entries, resolution range(Å))
$R_{free}$	91344	2393 (2.80-2.80)
Clashscore	102246	2827 (2.80-2.80)
Ramachandran outliers	100387	2782 (2.80-2.80)
Sidechain outliers	100360	2784 (2.80-2.80)
RSRZ outliers	91569	2404 (2.80-2.80)

The table below summarises the geometric issues observed across the polymeric chains and their fit to the electron density. The red, orange, yellow and green segments on the lower bar indicate the fraction of residues that contain outliers for  $\geq 3$ , 2, 1 and 0 types of geometric quality criteria. A grey segment represents the fraction of residues that are not modelled. The numeric value for each fraction is indicated below the corresponding segment, with a dot representing fractions  $\leq 5\%$ . The upper red bar (where present) indicates the fraction of residues that have poor fit to the electron density. The numeric value is given above the bar.

Mol	Chain	Length	Quality of chain
1	A	422	
1	B	422	

The following table lists non-polymeric compounds, carbohydrate monomers and non-standard residues in protein, DNA, RNA chains that are outliers for geometric or electron-density-fit criteria:

Mol	Type	Chain	Res	Chirality	Geometry	Clashes	Electron density
3	ICT	A	424	-	-	-	X
3	ICT	B	424	-	-	-	X

## 2 Entry composition

There are 3 unique types of molecules in this entry. The entry contains 6377 atoms, of which 0 are hydrogens and 0 are deuteriums.

In the tables below, the ZeroOcc column contains the number of atoms modelled with zero occupancy, the AltConf column contains the number of residues with at least one atom in alternate conformation and the Trace column contains the number of residues modelled with at most 2 atoms.

- Molecule 1 is a protein called Isocitrate dehydrogenase [NADP] cytoplasmic.

Mol	Chain	Residues	Atoms					ZeroOcc	AltConf	Trace
1	A	397	Total	C	N	O	S	0	0	0
			3125	1990	532	585	18			
1	B	398	Total	C	N	O	S	0	0	0
			3130	1993	533	586	18			

There are 18 discrepancies between the modelled and reference sequences:

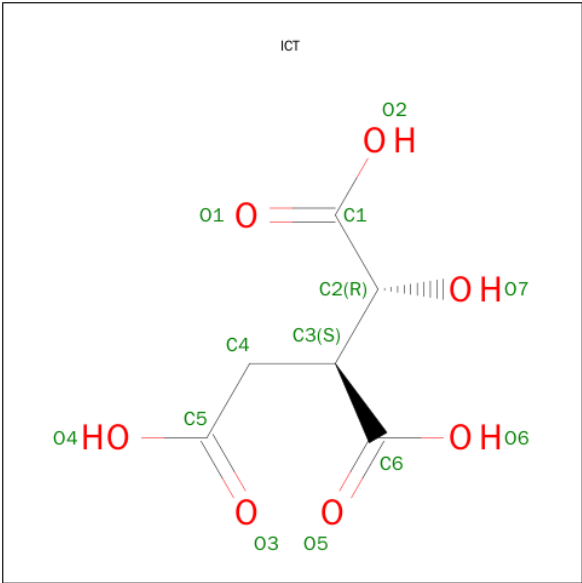
Chain	Residue	Modelled	Actual	Comment	Reference
A	132	HIS	ARG	ENGINEERED	UNP O75874
A	415	LEU	-	EXPRESSION TAG	UNP O75874
A	416	GLU	-	EXPRESSION TAG	UNP O75874
A	417	HIS	-	EXPRESSION TAG	UNP O75874
A	418	HIS	-	EXPRESSION TAG	UNP O75874
A	419	HIS	-	EXPRESSION TAG	UNP O75874
A	420	HIS	-	EXPRESSION TAG	UNP O75874
A	421	HIS	-	EXPRESSION TAG	UNP O75874
A	422	HIS	-	EXPRESSION TAG	UNP O75874
B	132	HIS	ARG	ENGINEERED	UNP O75874
B	415	LEU	-	EXPRESSION TAG	UNP O75874
B	416	GLU	-	EXPRESSION TAG	UNP O75874
B	417	HIS	-	EXPRESSION TAG	UNP O75874
B	418	HIS	-	EXPRESSION TAG	UNP O75874
B	419	HIS	-	EXPRESSION TAG	UNP O75874
B	420	HIS	-	EXPRESSION TAG	UNP O75874
B	421	HIS	-	EXPRESSION TAG	UNP O75874
B	422	HIS	-	EXPRESSION TAG	UNP O75874

- Molecule 2 is NADP NICOTINAMIDE-ADENINE-DINUCLEOTIDE PHOSPHATE (three-letter code: NAP) (formula: C<sub>21</sub>H<sub>28</sub>N<sub>7</sub>O<sub>17</sub>P<sub>3</sub>).



Mol	Chain	Residues	Atoms					ZeroOcc	AltConf
2	A	1	Total 48	C 21	N 7	O 17	P 3	0	0
2	B	1	Total 48	C 21	N 7	O 17	P 3	0	0

- Molecule 3 is ISOCITRIC ACID (three-letter code: ICT) (formula: C<sub>6</sub>H<sub>8</sub>O<sub>7</sub>).

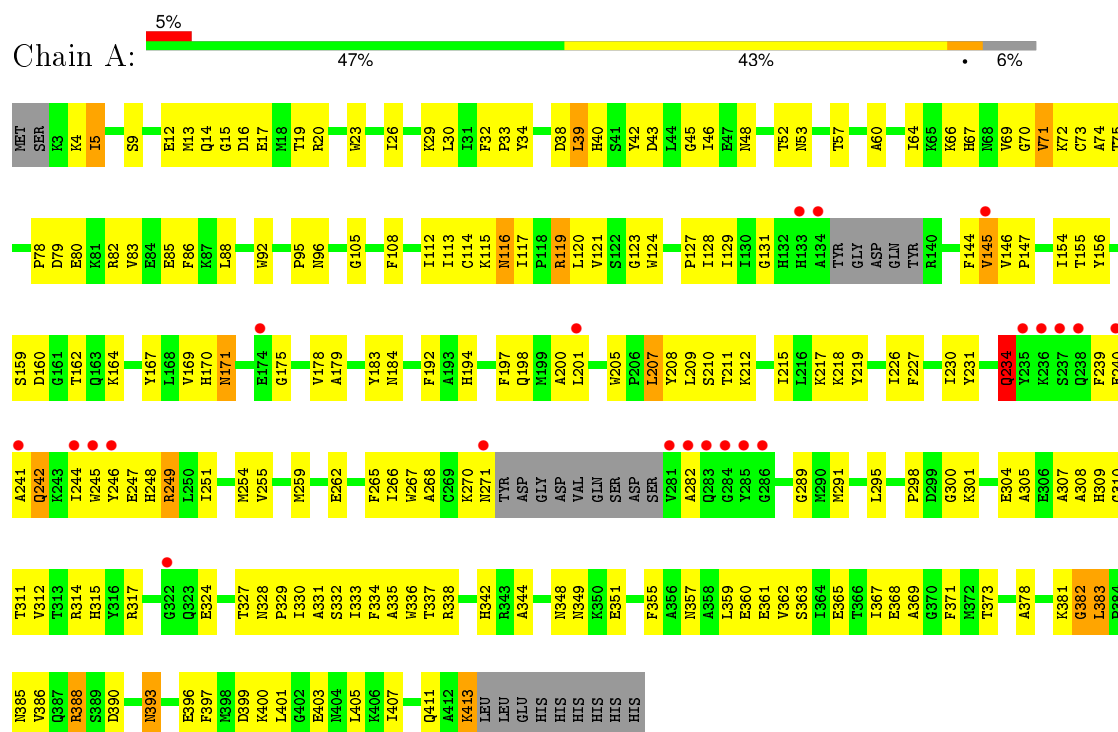


Mol	Chain	Residues	Atoms			ZeroOcc	AltConf
3	A	1	Total	C	O	0	0
			13	6	7		
3	B	1	Total	C	O	0	0
			13	6	7		

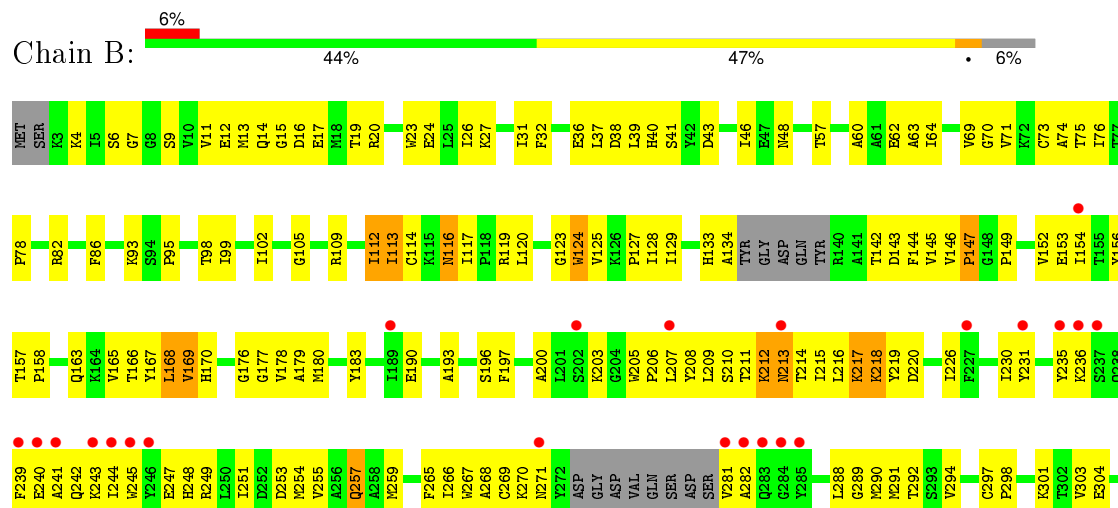
### 3 Residue-property plots

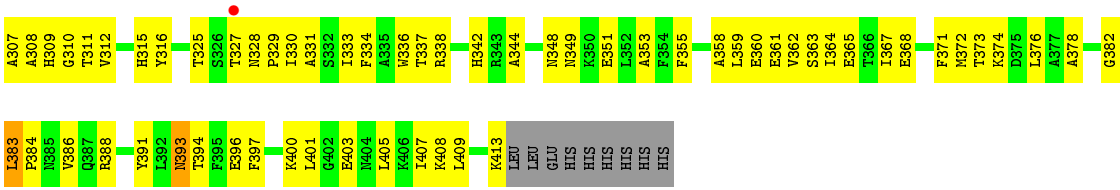
These plots are drawn for all protein, RNA and DNA chains in the entry. The first graphic for a chain summarises the proportions of errors displayed in the second graphic. The second graphic shows the sequence view annotated by issues in geometry and electron density. Residues are color-coded according to the number of geometric quality criteria for which they contain at least one outlier: green = 0, yellow = 1, orange = 2 and red = 3 or more. A red dot above a residue indicates a poor fit to the electron density ( $RSRZ > 2$ ). Stretches of 2 or more consecutive residues without any outlier are shown as a green connector. Residues present in the sample, but not in the model, are shown in grey.

- Molecule 1: Isocitrate dehydrogenase [NADP] cytoplasmic



- Molecule 1: Isocitrate dehydrogenase [NADP] cytoplasmic





## 4 Data and refinement statistics

Property	Value	Source
Space group	P 43 21 2	Depositor
Cell constants a, b, c, $\alpha$ , $\beta$ , $\gamma$	79.84Å 79.84Å 295.96Å 90.00° 90.00° 90.00°	Depositor
Resolution (Å)	39.92 – 2.80 47.55 – 2.80	Depositor EDS
% Data completeness (in resolution range)	95.2 (39.92-2.80) 100.0 (47.55-2.80)	Depositor EDS
$R_{merge}$	0.10	Depositor
$R_{sym}$	(Not available)	Depositor
$\langle I/\sigma(I) \rangle$ <sup>1</sup>	3.25 (at 2.81Å)	Xtriage
Refinement program	PHENIX (phenix.refine: 1.6 _289)	Depositor
R, $R_{free}$	0.224 , 0.269 0.234 , 0.225	Depositor DCC
$R_{free}$ test set	1258 reflections (5.38%)	DCC
Wilson B-factor (Å <sup>2</sup> )	61.7	Xtriage
Anisotropy	0.172	Xtriage
Bulk solvent $k_{sol}$ (e/Å <sup>3</sup> ), $B_{sol}$ (Å <sup>2</sup> )	0.37 , 43.9	EDS
Estimated twinning fraction	No twinning to report.	Xtriage
L-test for twinning <sup>2</sup>	$\langle  L  \rangle = 0.51$ , $\langle L^2 \rangle = 0.35$	Xtriage
Outliers	0 of 24624 reflections	Xtriage
$F_o, F_c$ correlation	0.92	EDS
Total number of atoms	6377	wwPDB-VP
Average B, all atoms (Å <sup>2</sup> )	69.0	wwPDB-VP

Xtriage's analysis on translational NCS is as follows: *The largest off-origin peak in the Patterson function is 3.15% of the height of the origin peak. No significant pseudotranslation is detected.*

<sup>1</sup>Intensities estimated from amplitudes.

<sup>2</sup>Theoretical values of  $\langle |L| \rangle$ ,  $\langle L^2 \rangle$  for acentric reflections are 0.5, 0.375 respectively for untwinned datasets, and 0.333, 0.2 for perfectly twinned datasets.



## 5 Model quality

### 5.1 Standard geometry

Bond lengths and bond angles in the following residue types are not validated in this section: NAP, ICT

The Z score for a bond length (or angle) is the number of standard deviations the observed value is removed from the expected value. A bond length (or angle) with  $|Z| > 5$  is considered an outlier worth inspection. RMSZ is the root-mean-square of all Z scores of the bond lengths (or angles).

Mol	Chain	Bond lengths		Bond angles	
		RMSZ	$\# Z  > 5$	RMSZ	$\# Z  > 5$
1	A	0.27	0/3188	0.44	0/4295
1	B	0.27	0/3193	0.45	0/4302
All	All	0.27	0/6381	0.44	0/8597

There are no bond length outliers.

There are no bond angle outliers.

There are no chirality outliers.

There are no planarity outliers.

### 5.2 Too-close contacts

In the following table, the Non-H and H(model) columns list the number of non-hydrogen atoms and hydrogen atoms in the chain respectively. The H(added) column lists the number of hydrogen atoms added and optimized by MolProbity. The Clashes column lists the number of clashes within the asymmetric unit, whereas Symm-Clashes lists symmetry related clashes.

Mol	Chain	Non-H	H(model)	H(added)	Clashes	Symm-Clashes
1	A	3125	0	3105	193	0
1	B	3130	0	3107	206	0
2	A	48	0	25	10	0
2	B	48	0	25	6	0
3	A	13	0	7	0	0
3	B	13	0	7	0	0
All	All	6377	0	6276	387	0

The all-atom clashscore is defined as the number of clashes found per 1000 atoms (including hydrogen atoms). The all-atom clashscore for this structure is 31.

All (387) close contacts within the same asymmetric unit are listed below, sorted by their clash

magnitude.

Atom-1	Atom-2	Interatomic distance (Å)	Clash overlap (Å)
1:A:219:TYR:HA	1:B:178:VAL:HG21	1.39	1.04
1:A:178:VAL:HG21	1:B:219:TYR:HA	1.38	1.03
1:B:117:ILE:HD13	1:B:376:LEU:HD22	1.45	0.97
1:B:9:SER:HB2	1:B:40:HIS:HE1	1.26	0.97
1:A:393:ASN:ND2	1:A:396:GLU:H	1.64	0.94
1:B:315:HIS:HE1	2:B:423:NAP:O2X	1.50	0.93
1:A:155:THR:HG21	1:A:164:LYS:HE2	1.54	0.89
1:B:244:ILE:HG12	1:B:245:TRP:H	1.39	0.88
2:A:423:NAP:H8A	2:A:423:NAP:H51A	1.56	0.87
1:B:9:SER:HB2	1:B:40:HIS:CE1	2.08	0.87
1:A:9:SER:HB2	1:A:40:HIS:HE1	1.42	0.85
1:B:338:ARG:HG3	1:B:338:ARG:HH11	1.43	0.82
1:A:393:ASN:HD21	1:A:396:GLU:H	1.27	0.81
1:B:116:ASN:H	1:B:116:ASN:HD22	1.27	0.80
1:A:218:LYS:HE3	1:B:145:VAL:HG23	1.62	0.80
1:A:314:ARG:NE	2:A:423:NAP:O3X	2.14	0.80
1:B:393:ASN:ND2	1:B:396:GLU:H	1.79	0.79
1:A:330:ILE:HD12	1:A:363:SER:HB3	1.64	0.79
1:B:211:THR:HB	1:B:220:ASP:HB3	1.67	0.77
1:A:219:TYR:HA	1:B:178:VAL:CG2	2.16	0.75
1:A:393:ASN:C	1:A:393:ASN:HD22	1.90	0.75
1:A:219:TYR:HB2	1:B:143:ASP:HB2	1.67	0.75
1:B:212:LYS:HE3	1:B:251:ILE:HG13	1.69	0.74
1:A:116:ASN:ND2	1:A:368:GLU:HA	2.02	0.74
1:A:9:SER:HB2	1:A:40:HIS:CE1	2.22	0.74
1:A:207:LEU:HD22	1:A:208:TYR:H	1.54	0.72
1:B:291:MET:HB3	1:B:308:ALA:HB3	1.71	0.72
1:B:315:HIS:CE1	2:B:423:NAP:O2X	2.39	0.71
1:B:393:ASN:C	1:B:393:ASN:HD22	1.93	0.71
1:A:145:VAL:HG23	1:A:146:VAL:H	1.55	0.71
1:B:196:SER:HB3	1:B:207:LEU:HD11	1.73	0.70
1:B:109:ARG:HD2	1:B:282:ALA:CB	2.22	0.70
1:B:117:ILE:HD11	1:B:367:ILE:HG21	1.72	0.70
1:A:16:ASP:HB2	1:A:311:THR:HG21	1.72	0.69
1:B:397:PHE:CE2	1:B:401:LEU:HD11	2.28	0.69
1:B:244:ILE:HG12	1:B:245:TRP:N	2.06	0.69
1:A:309:HIS:HD2	1:A:310:GLY:O	1.76	0.69
1:B:255:VAL:O	1:B:259:MET:HG2	1.93	0.69
1:B:248:HIS:CG	1:B:249:ARG:H	2.11	0.69
1:B:64:ILE:HD13	1:B:304:GLU:HG3	1.74	0.69
1:B:330:ILE:HD12	1:B:363:SER:HB3	1.74	0.68

*Continued on next page...*

*Continued from previous page...*

Atom-1	Atom-2	Interatomic distance (Å)	Clash overlap (Å)
1:A:170:HIS:HB2	1:B:183:TYR:CD2	2.28	0.68
1:B:205:TRP:HB3	1:B:265:PHE:HA	1.75	0.68
1:A:210:SER:HA	1:A:249:ARG:O	1.94	0.68
1:B:383:LEU:HB3	1:B:384:PRO:HD3	1.76	0.68
1:B:249:ARG:HB3	1:B:254:MET:HG2	1.76	0.67
1:A:9:SER:HA	1:A:38:ASP:HB2	1.77	0.67
1:A:198:GLN:HG2	1:A:300:GLY:HA2	1.77	0.67
1:B:358:ALA:O	1:B:362:VAL:HG23	1.95	0.67
1:A:116:ASN:H	1:A:116:ASN:HD22	1.43	0.66
1:A:200:ALA:HB1	1:A:244:ILE:HD11	1.76	0.66
1:B:200:ALA:HA	1:B:266:ILE:HG13	1.78	0.66
1:A:200:ALA:HA	1:A:266:ILE:HG13	1.76	0.65
1:B:309:HIS:CE1	1:B:331:ALA:HB3	2.30	0.65
1:A:210:SER:HB3	1:A:254:MET:HG2	1.78	0.65
1:A:330:ILE:HG13	1:A:367:ILE:HD11	1.79	0.65
1:B:93:LYS:HD2	1:B:93:LYS:H	1.60	0.64
1:B:14:GLN:HE22	1:B:41:SER:HB3	1.62	0.64
1:B:309:HIS:HE1	1:B:331:ALA:HB3	1.61	0.64
1:B:393:ASN:HD21	1:B:396:GLU:H	1.44	0.64
1:B:129:ILE:CD1	1:B:203:LYS:HD3	2.28	0.64
1:A:127:PRO:HG2	1:A:205:TRP:CH2	2.33	0.64
1:B:242:GLN:HB3	1:B:244:ILE:HG22	1.79	0.64
1:B:403:GLU:O	1:B:407:ILE:HD13	1.96	0.64
1:A:315:HIS:HE1	2:A:423:NAP:O2X	1.81	0.63
1:A:301:LYS:O	1:A:342:HIS:NE2	2.30	0.63
1:A:155:THR:CG2	1:A:164:LYS:HE2	2.29	0.63
1:B:338:ARG:HG3	1:B:338:ARG:NH1	2.08	0.62
1:B:7:GLY:HA3	1:B:37:LEU:HD23	1.80	0.62
1:A:17:GLU:HB2	1:A:311:THR:HB	1.80	0.62
1:A:207:LEU:HD22	1:A:208:TYR:N	2.15	0.62
1:B:95:PRO:O	1:B:99:ILE:HG12	1.99	0.62
1:B:23:TRP:CD2	1:B:73:CYS:HB2	2.35	0.61
1:B:152:VAL:O	1:B:169:VAL:HG13	2.00	0.61
1:B:93:LYS:HD2	1:B:93:LYS:N	2.16	0.61
1:B:158:PRO:HG2	1:B:163:GLN:HG2	1.80	0.61
1:A:127:PRO:HG2	1:A:205:TRP:HH2	1.66	0.61
1:B:128:ILE:N	1:B:128:ILE:HD12	2.15	0.61
1:A:113:ILE:HG23	1:A:119:ARG:HD2	1.82	0.61
1:A:192:PHE:CZ	1:A:268:ALA:HB1	2.36	0.61
1:B:116:ASN:ND2	1:B:368:GLU:HA	2.16	0.61
1:A:60:ALA:O	1:A:64:ILE:HG13	2.01	0.60

*Continued on next page...*

*Continued from previous page...*

Atom-1	Atom-2	Interatomic distance (Å)	Clash overlap (Å)
1:A:212:LYS:HB3	1:A:215:ILE:HG22	1.83	0.60
1:B:75:THR:O	2:B:423:NAP:H2N	2.01	0.60
1:B:334:PHE:O	1:B:338:ARG:HG2	2.00	0.60
1:A:251:ILE:O	1:A:255:VAL:HG13	2.01	0.60
1:A:270:LYS:O	1:A:270:LYS:HD3	2.01	0.60
1:B:15:GLY:O	1:B:20:ARG:HD2	2.02	0.60
1:A:242:GLN:HB3	1:A:244:ILE:HG22	1.84	0.59
1:B:362:VAL:HG21	1:B:405:LEU:HA	1.84	0.59
1:B:71:VAL:HG23	1:B:71:VAL:O	2.01	0.59
1:A:381:LYS:HD2	1:A:390:ASP:OD1	2.02	0.59
1:A:116:ASN:HD21	1:A:368:GLU:HA	1.67	0.59
1:B:75:THR:OG1	1:B:95:PRO:HG2	2.02	0.59
1:A:359:LEU:HD13	1:A:405:LEU:HD22	1.84	0.59
1:B:382:GLY:O	1:B:386:VAL:HG23	2.03	0.59
1:A:207:LEU:HD23	1:A:266:ILE:HB	1.84	0.58
1:B:289:GLY:HA3	1:B:328:ASN:HB3	1.83	0.58
1:B:212:LYS:HB2	1:B:220:ASP:OD1	2.02	0.58
1:B:120:LEU:HB3	1:B:124:TRP:CZ3	2.38	0.58
1:B:13:MET:SD	1:B:64:ILE:HD11	2.43	0.58
1:A:121:VAL:HG12	1:A:123:GLY:H	1.68	0.58
1:B:309:HIS:HD2	1:B:310:GLY:O	1.87	0.58
1:A:15:GLY:HA3	1:A:74:ALA:O	2.03	0.58
1:A:112:ILE:HD11	1:A:330:ILE:HG21	1.85	0.58
1:A:344:ALA:HA	1:A:349:ASN:HB3	1.86	0.58
1:A:29:LYS:HE3	1:A:399:ASP:OD1	2.03	0.58
1:A:357:ASN:O	1:A:361:GLU:HG2	2.03	0.58
1:A:167:TYR:HB3	1:B:142:THR:HG21	1.86	0.57
1:A:309:HIS:CE1	1:A:331:ALA:HB3	2.39	0.57
1:A:46:ILE:HD11	1:A:78:PRO:HG3	1.86	0.56
1:A:291:MET:HB3	1:A:308:ALA:HB3	1.87	0.56
1:A:403:GLU:O	1:A:407:ILE:HG12	2.06	0.56
1:B:105:GLY:HA2	1:B:298:PRO:HD3	1.87	0.56
1:B:26:ILE:HG22	1:B:31:ILE:HD13	1.88	0.56
1:B:197:PHE:HA	1:B:207:LEU:HD12	1.88	0.56
1:A:209:LEU:HD22	1:A:227:PHE:CG	2.41	0.56
1:A:72:LYS:HE2	1:A:96:ASN:OD1	2.06	0.56
1:A:334:PHE:HA	1:A:337:THR:OG1	2.06	0.56
1:A:15:GLY:HA2	1:A:75:THR:HG22	1.86	0.55
1:B:117:ILE:HD11	1:B:367:ILE:CG2	2.36	0.55
1:A:57:THR:HG21	1:A:95:PRO:HA	1.87	0.55
1:A:194:HIS:O	1:A:198:GLN:HB2	2.07	0.55

*Continued on next page...*

*Continued from previous page...*

Atom-1	Atom-2	Interatomic distance (Å)	Clash overlap (Å)
1:A:333:ILE:CD1	1:A:401:LEU:HD13	2.36	0.55
1:B:4:LYS:HD2	1:B:36:GLU:OE1	2.07	0.55
1:B:330:ILE:HG13	1:B:367:ILE:HD11	1.89	0.55
1:A:397:PHE:CE2	1:A:401:LEU:HD11	2.42	0.55
1:A:382:GLY:O	1:A:386:VAL:HG23	2.06	0.55
1:B:248:HIS:CG	1:B:249:ARG:N	2.70	0.54
1:B:210:SER:HB3	1:B:254:MET:HG3	1.90	0.54
1:B:109:ARG:HD2	1:B:282:ALA:HB1	1.90	0.54
1:B:98:THR:O	1:B:102:ILE:HG12	2.08	0.54
1:A:271:ASN:HD22	1:A:271:ASN:N	2.06	0.54
1:A:413:LYS:NZ	1:A:413:LYS:HB2	2.21	0.54
1:A:249:ARG:HB3	1:A:254:MET:HB2	1.89	0.54
1:A:270:LYS:HD3	1:A:270:LYS:C	2.27	0.54
1:A:362:VAL:HG21	1:A:405:LEU:HA	1.90	0.54
1:B:288:LEU:HB3	1:B:309:HIS:HB3	1.90	0.53
1:A:208:TYR:OH	1:A:245:TRP:HH2	1.91	0.53
1:B:205:TRP:O	1:B:244:ILE:HD11	2.08	0.53
1:A:23:TRP:CD2	1:A:73:CYS:HB2	2.43	0.53
1:A:207:LEU:CD2	1:A:208:TYR:H	2.21	0.53
1:A:117:ILE:O	1:A:119:ARG:HD3	2.08	0.53
1:B:334:PHE:HA	1:B:337:THR:OG1	2.09	0.53
1:B:215:ILE:HG23	1:B:216:LEU:N	2.23	0.53
1:A:128:ILE:N	1:A:128:ILE:HD12	2.24	0.52
1:A:75:THR:OG1	1:A:95:PRO:HG2	2.09	0.52
1:A:363:SER:HA	1:A:401:LEU:HD21	1.91	0.52
1:A:208:TYR:OH	1:A:245:TRP:CH2	2.61	0.52
1:B:359:LEU:HD13	1:B:405:LEU:HD22	1.90	0.52
1:B:378:ALA:HA	1:B:386:VAL:HG21	1.90	0.52
1:A:367:ILE:HA	1:A:371:PHE:O	2.10	0.52
1:A:66:LYS:HE3	1:A:67:HIS:CE1	2.44	0.52
1:B:312:VAL:HG12	1:B:315:HIS:HB2	1.90	0.52
1:A:211:THR:OG1	1:A:248:HIS:HE1	1.93	0.52
1:A:15:GLY:N	1:A:73:CYS:HB3	2.24	0.52
1:A:79:ASP:H	1:A:82:ARG:HB2	1.74	0.52
1:A:330:ILE:CD1	1:A:363:SER:HB3	2.39	0.52
1:B:69:VAL:HG22	1:B:342:HIS:HD2	1.75	0.52
1:B:165:VAL:HG11	1:B:167:TYR:CZ	2.45	0.51
1:A:207:LEU:HD13	1:A:246:TYR:CD2	2.45	0.51
1:B:248:HIS:CD2	1:B:249:ARG:H	2.28	0.51
1:A:212:LYS:HB3	1:A:215:ILE:CG2	2.41	0.51
1:A:226:ILE:O	1:A:230:ILE:HD13	2.10	0.51

*Continued on next page...*

*Continued from previous page...*

Atom-1	Atom-2	Interatomic distance (Å)	Clash overlap (Å)
1:B:239:PHE:HD2	1:B:245:TRP:CA	2.24	0.51
1:B:231:TYR:CE1	1:B:236:LYS:HA	2.45	0.50
1:B:19:THR:O	1:B:23:TRP:HB2	2.11	0.50
1:B:145:VAL:O	1:B:146:VAL:HB	2.11	0.50
1:B:270:LYS:O	1:B:270:LYS:HD3	2.11	0.50
1:A:246:TYR:CG	1:A:247:GLU:N	2.79	0.50
1:A:144:PHE:HE1	1:B:154:ILE:HD13	1.76	0.50
1:B:327:THR:O	1:B:329:PRO:HD3	2.12	0.50
1:B:117:ILE:HD11	1:B:376:LEU:HD13	1.94	0.50
1:B:129:ILE:HD12	1:B:266:ILE:CD1	2.42	0.50
1:B:270:LYS:C	1:B:270:LYS:HD3	2.33	0.49
1:B:46:ILE:HG21	1:B:86:PHE:CZ	2.47	0.49
1:A:70:GLY:O	1:A:304:GLU:HA	2.13	0.49
1:A:393:ASN:C	1:A:393:ASN:ND2	2.61	0.49
1:B:393:ASN:C	1:B:393:ASN:ND2	2.65	0.49
1:A:310:GLY:HA3	2:A:423:NAP:C6N	2.42	0.49
1:A:75:THR:H	2:A:423:NAP:H71N	1.58	0.49
1:A:197:PHE:CZ	1:A:231:TYR:HB2	2.46	0.49
1:A:30:LEU:O	1:A:355:PHE:HZ	1.95	0.49
1:B:337:THR:CB	1:B:360:GLU:HG3	2.42	0.49
1:B:344:ALA:HB1	1:B:353:ALA:HB2	1.94	0.49
1:B:11:VAL:HG21	1:B:63:ALA:C	2.33	0.49
1:B:112:ILE:HG12	1:B:330:ILE:HG21	1.95	0.49
1:A:311:THR:OG1	2:A:423:NAP:H4D	2.13	0.49
1:B:333:ILE:O	1:B:337:THR:HG23	2.13	0.49
1:A:239:PHE:O	1:A:244:ILE:HG22	2.12	0.49
1:A:334:PHE:CE2	1:A:360:GLU:HG2	2.47	0.49
1:B:15:GLY:N	1:B:73:CYS:HB3	2.27	0.49
1:B:15:GLY:HA2	1:B:75:THR:HG22	1.94	0.49
1:B:328:ASN:OD1	1:B:330:ILE:HG12	2.13	0.49
1:B:145:VAL:O	1:B:177:GLY:O	2.30	0.49
1:A:371:PHE:CD1	1:A:400:LYS:HE2	2.48	0.48
1:B:133:HIS:O	1:B:134:ALA:HB3	2.12	0.48
1:A:219:TYR:HE2	1:A:270:LYS:HE3	1.77	0.48
1:B:240:GLU:C	1:B:242:GLN:H	2.15	0.48
1:A:183:TYR:CD2	1:B:170:HIS:HB2	2.49	0.48
1:A:327:THR:O	1:A:373:THR:HG21	2.13	0.48
1:B:19:THR:OG1	1:B:74:ALA:HB3	2.13	0.48
1:B:374:LYS:HD2	1:B:391:TYR:CZ	2.49	0.48
2:B:423:NAP:O1N	2:B:423:NAP:O1A	2.30	0.48
1:B:212:LYS:HA	1:B:212:LYS:HE2	1.96	0.48

*Continued on next page...*

*Continued from previous page...*

Atom-1	Atom-2	Interatomic distance (Å)	Clash overlap (Å)
1:B:307:ALA:HB1	1:B:309:HIS:CE1	2.48	0.48
1:B:112:ILE:O	1:B:112:ILE:HG13	2.14	0.48
1:B:197:PHE:CZ	1:B:231:TYR:HB2	2.49	0.48
1:B:207:LEU:HD23	1:B:208:TYR:N	2.29	0.47
1:A:183:TYR:HA	1:B:179:ALA:HA	1.94	0.47
1:B:325:THR:O	1:B:393:ASN:HB2	2.14	0.47
1:A:309:HIS:HE1	1:A:331:ALA:HB3	1.79	0.47
1:B:9:SER:HA	1:B:38:ASP:HB2	1.95	0.47
1:B:208:TYR:HH	1:B:245:TRP:HH2	1.63	0.47
1:A:5:ILE:HG12	1:A:34:TYR:O	2.15	0.47
1:B:197:PHE:HB3	1:B:235:TYR:CD2	2.50	0.47
1:B:239:PHE:HD2	1:B:245:TRP:C	2.17	0.47
1:A:20:ARG:HH22	1:A:43:ASP:CG	2.16	0.47
1:B:249:ARG:HH21	1:B:257:GLN:HB2	1.79	0.47
1:A:46:ILE:CD1	1:A:78:PRO:HG3	2.44	0.47
1:B:364:ILE:O	1:B:368:GLU:HG3	2.15	0.47
1:B:12:GLU:HG3	1:B:336:TRP:CZ2	2.50	0.47
1:A:5:ILE:HG21	1:A:351:GLU:HB3	1.97	0.47
1:B:337:THR:HB	1:B:360:GLU:HG3	1.97	0.47
1:B:193:ALA:HB3	1:B:230:ILE:HD12	1.97	0.47
1:A:378:ALA:HB1	1:A:383:LEU:HD22	1.97	0.47
1:A:86:PHE:HB2	1:A:88:LEU:HG	1.97	0.46
1:A:219:TYR:CD2	1:B:180:MET:HE2	2.51	0.46
1:B:367:ILE:HA	1:B:371:PHE:O	2.16	0.46
1:B:281:VAL:O	1:B:282:ALA:HB3	2.15	0.46
1:B:294:VAL:HG13	1:B:303:VAL:HG13	1.98	0.46
1:B:112:ILE:HG12	1:B:330:ILE:CG2	2.46	0.46
1:B:71:VAL:CG2	1:B:71:VAL:O	2.63	0.46
1:B:400:LYS:HA	1:B:400:LYS:HD2	1.68	0.46
1:B:310:GLY:HA3	2:B:423:NAP:C6N	2.46	0.46
1:B:208:TYR:OH	1:B:245:TRP:HH2	1.98	0.46
1:B:291:MET:CB	1:B:308:ALA:HB3	2.43	0.46
1:A:255:VAL:O	1:A:259:MET:HG2	2.16	0.46
1:A:115:LYS:HA	1:A:119:ARG:HH12	1.80	0.46
1:B:361:GLU:HB3	1:B:408:LYS:NZ	2.31	0.46
1:B:147:PRO:O	1:B:176:GLY:HA3	2.16	0.45
1:A:307:ALA:HB1	1:A:309:HIS:CE1	2.50	0.45
1:B:117:ILE:CD1	1:B:367:ILE:HG21	2.45	0.45
1:B:383:LEU:CB	1:B:384:PRO:HD3	2.45	0.45
1:A:46:ILE:HG13	1:A:88:LEU:HD21	1.98	0.45
1:B:114:CYS:HB2	1:B:117:ILE:HD12	1.99	0.45

*Continued on next page...*

*Continued from previous page...*

Atom-1	Atom-2	Interatomic distance (Å)	Clash overlap (Å)
1:A:338:ARG:HH11	1:A:338:ARG:HG3	1.81	0.45
1:B:17:GLU:CG	1:B:76:ILE:HD11	2.47	0.45
1:A:160:ASP:OD1	1:A:162:THR:HG23	2.17	0.45
1:A:146:VAL:N	1:A:147:PRO:HD3	2.31	0.45
1:B:361:GLU:O	1:B:365:GLU:HG3	2.16	0.45
1:B:16:ASP:HB2	1:B:311:THR:HG21	1.97	0.45
1:A:242:GLN:C	1:A:244:ILE:H	2.20	0.45
1:B:152:VAL:HG11	1:B:179:ALA:CB	2.46	0.45
1:B:367:ILE:HD13	1:B:376:LEU:CD1	2.47	0.45
1:B:239:PHE:HA	1:B:244:ILE:HG23	1.99	0.45
1:A:19:THR:OG1	1:A:311:THR:HA	2.17	0.45
1:B:9:SER:HA	1:B:38:ASP:O	2.17	0.45
1:A:69:VAL:HG22	1:A:342:HIS:HD2	1.82	0.45
1:A:381:LYS:O	1:A:385:ASN:HB2	2.15	0.45
1:A:271:ASN:ND2	1:A:271:ASN:N	2.65	0.45
1:B:226:ILE:O	1:B:230:ILE:HG13	2.17	0.45
1:A:244:ILE:HG12	1:A:245:TRP:N	2.33	0.44
1:A:13:MET:SD	1:A:64:ILE:HD11	2.58	0.44
1:A:209:LEU:HD22	1:A:227:PHE:CD1	2.53	0.44
1:B:351:GLU:CD	1:B:351:GLU:H	2.21	0.44
1:B:127:PRO:HG2	1:B:205:TRP:CH2	2.52	0.44
1:A:197:PHE:CD2	1:A:207:LEU:HD12	2.51	0.44
1:A:407:ILE:O	1:A:411:GLN:HG3	2.17	0.44
1:B:248:HIS:O	1:B:249:ARG:HB2	2.17	0.44
1:B:242:GLN:HG2	1:B:242:GLN:O	2.17	0.44
1:B:212:LYS:O	1:B:214:THR:N	2.50	0.44
1:B:124:TRP:CG	1:B:128:ILE:HD11	2.53	0.44
1:A:205:TRP:O	1:A:244:ILE:HD11	2.17	0.44
1:A:171:ASN:HD22	1:A:171:ASN:C	2.19	0.44
1:B:200:ALA:CA	1:B:266:ILE:HG13	2.47	0.44
1:A:230:ILE:O	1:A:234:GLN:HB3	2.18	0.44
1:B:315:HIS:O	1:B:325:THR:HG21	2.17	0.44
1:B:60:ALA:O	1:B:64:ILE:HG13	2.18	0.44
1:B:327:THR:O	1:B:373:THR:HG21	2.18	0.44
1:B:265:PHE:HE1	1:B:267:TRP:HB2	1.83	0.44
1:A:112:ILE:CD1	1:A:330:ILE:HG21	2.47	0.44
1:A:159:SER:OG	1:B:149:PRO:HB2	2.17	0.44
1:A:312:VAL:HA	2:A:423:NAP:O2A	2.18	0.44
1:A:324:GLU:OE2	1:A:388:ARG:NH1	2.50	0.44
1:A:12:GLU:HG3	1:A:336:TRP:CZ2	2.53	0.43
1:B:156:TYR:CE1	1:B:158:PRO:HG3	2.53	0.43

*Continued on next page...*



*Continued from previous page...*

Atom-1	Atom-2	Interatomic distance (Å)	Clash overlap (Å)
1:B:11:VAL:O	1:B:70:GLY:HA2	2.18	0.43
1:A:48:ASN:O	1:A:52:THR:HG23	2.18	0.43
1:A:4:LYS:HD3	1:A:32:PHE:O	2.17	0.43
1:B:116:ASN:N	1:B:116:ASN:HD22	2.00	0.43
1:A:231:TYR:CE1	1:A:246:TYR:HB3	2.53	0.43
1:B:27:LYS:HD2	1:B:336:TRP:HZ2	1.83	0.43
1:B:393:ASN:O	1:B:394:THR:C	2.55	0.43
1:A:329:PRO:O	1:A:333:ILE:HG13	2.19	0.43
1:A:363:SER:HA	1:A:401:LEU:CD2	2.48	0.43
1:A:208:TYR:CE2	1:A:245:TRP:HZ3	2.36	0.43
1:A:75:THR:O	2:A:423:NAP:H2N	2.19	0.43
1:A:210:SER:HB2	1:A:251:ILE:HA	2.01	0.43
1:A:388:ARG:NE	1:A:388:ARG:O	2.49	0.43
1:B:265:PHE:CE1	1:B:267:TRP:HB2	2.54	0.43
1:A:105:GLY:HA2	1:A:298:PRO:HD3	2.01	0.43
1:B:206:PRO:HB3	1:B:245:TRP:CE2	2.54	0.43
1:B:26:ILE:CG2	1:B:31:ILE:HD13	2.48	0.43
1:A:39:LEU:HA	1:A:39:LEU:HD23	1.76	0.43
1:A:26:ILE:HD11	1:A:332:SER:HB2	2.00	0.43
1:A:205:TRP:HB3	1:A:265:PHE:HA	2.00	0.43
1:A:114:CYS:O	1:A:117:ILE:HB	2.19	0.43
1:B:113:ILE:HG21	1:B:125:VAL:O	2.17	0.43
1:A:15:GLY:O	1:A:20:ARG:NH1	2.45	0.42
1:B:211:THR:OG1	1:B:213:ASN:HB2	2.19	0.42
1:A:170:HIS:HB2	1:B:183:TYR:CE2	2.54	0.42
1:A:13:MET:HA	1:A:42:TYR:O	2.19	0.42
1:A:413:LYS:HZ2	1:A:413:LYS:HB2	1.84	0.42
1:A:53:ASN:HA	1:A:92:TRP:CH2	2.53	0.42
1:B:43:ASP:HB3	1:B:48:ASN:ND2	2.33	0.42
1:A:19:THR:OG1	1:A:74:ALA:HB3	2.19	0.42
1:A:23:TRP:HZ2	1:A:71:VAL:HG23	1.83	0.42
1:B:6:SER:O	1:B:349:ASN:ND2	2.49	0.42
1:A:16:ASP:OD1	1:A:45:GLY:HA2	2.20	0.42
1:B:109:ARG:CD	1:B:282:ALA:CB	2.97	0.42
1:B:253:ASP:O	1:B:257:GLN:HB3	2.19	0.42
1:B:378:ALA:HA	1:B:386:VAL:CG2	2.48	0.42
1:B:20:ARG:O	1:B:24:GLU:HG2	2.18	0.42
1:B:251:ILE:O	1:B:255:VAL:HG13	2.19	0.42
1:A:205:TRP:C	1:A:244:ILE:HG13	2.40	0.42
1:A:124:TRP:CG	1:A:128:ILE:HD11	2.55	0.42
1:B:123:GLY:O	1:B:125:VAL:HG23	2.20	0.42

*Continued on next page...*

*Continued from previous page...*

Atom-1	Atom-2	Interatomic distance (Å)	Clash overlap (Å)
1:B:309:HIS:CD2	1:B:310:GLY:O	2.71	0.42
1:A:119:ARG:N	1:A:119:ARG:HD3	2.35	0.42
1:A:23:TRP:CZ2	1:A:71:VAL:HG23	2.55	0.42
1:A:108:PHE:CD1	1:A:131:GLY:HA3	2.55	0.42
1:A:289:GLY:HA3	1:A:328:ASN:HB3	2.01	0.42
1:A:13:MET:CE	1:A:64:ILE:HD11	2.50	0.41
1:A:295:LEU:HB3	1:A:304:GLU:HB3	2.01	0.41
1:A:378:ALA:HA	1:A:386:VAL:CG2	2.50	0.41
1:B:209:LEU:HD12	1:B:268:ALA:O	2.20	0.41
1:B:112:ILE:CD1	1:B:364:ILE:HG12	2.50	0.41
1:B:239:PHE:HB3	1:B:245:TRP:HA	2.02	0.41
1:A:64:ILE:HD13	1:A:304:GLU:HG3	2.02	0.41
1:A:305:ALA:HB1	1:A:335:ALA:HA	2.02	0.41
1:B:372:MET:HB2	1:B:376:LEU:HD12	2.02	0.41
1:B:215:ILE:HG23	1:B:216:LEU:H	1.83	0.41
1:A:85:GLU:OE2	1:A:317:ARG:NH2	2.52	0.41
1:B:330:ILE:CD1	1:B:363:SER:HB3	2.49	0.41
1:A:12:GLU:OE2	1:A:23:TRP:NE1	2.52	0.41
1:A:201:LEU:HD21	1:A:239:PHE:CD1	2.55	0.41
1:A:365:GLU:O	1:A:369:ALA:N	2.54	0.41
1:B:190:GLU:HA	1:B:230:ILE:CD1	2.51	0.41
1:A:32:PHE:HB2	1:A:33:PRO:HD3	2.02	0.41
1:A:108:PHE:CE1	1:A:131:GLY:HA3	2.55	0.41
1:B:355:PHE:CD1	1:B:409:LEU:HD11	2.56	0.41
2:B:423:NAP:H2D	2:B:423:NAP:H6N	1.86	0.41
1:A:312:VAL:N	2:A:423:NAP:O2A	2.51	0.41
1:B:190:GLU:HG2	1:B:230:ILE:HD11	2.03	0.41
1:A:240:GLU:C	1:A:242:GLN:H	2.24	0.41
1:A:265:PHE:HE1	1:A:267:TRP:HB2	1.86	0.41
1:B:112:ILE:HD11	1:B:290:MET:HE1	2.01	0.41
1:B:57:THR:HG21	1:B:95:PRO:HA	2.03	0.41
1:A:200:ALA:CA	1:A:266:ILE:HG13	2.47	0.41
1:A:169:VAL:O	1:A:170:HIS:HB2	2.21	0.41
1:A:179:ALA:HA	1:B:183:TYR:HA	2.02	0.41
1:A:120:LEU:HD22	1:A:121:VAL:HG23	2.03	0.41
1:B:116:ASN:H	1:B:116:ASN:ND2	2.07	0.41
1:A:14:GLN:HB2	1:A:43:ASP:HA	2.02	0.41
1:A:129:ILE:HG13	1:A:266:ILE:CD1	2.51	0.41
1:B:217:LYS:HB3	1:B:218:LYS:H	1.66	0.41
1:A:40:HIS:NE2	1:A:67:HIS:NE2	2.69	0.40
1:A:116:ASN:N	1:A:116:ASN:HD22	2.15	0.40

*Continued on next page...*

Continued from previous page...

Atom-1	Atom-2	Interatomic distance (Å)	Clash overlap (Å)
1:B:27:LYS:HD2	1:B:336:TRP:CZ2	2.56	0.40
1:B:153:GLU:HB3	1:B:168:LEU:HA	2.03	0.40
1:B:247:GLU:HG2	1:B:248:HIS:O	2.21	0.40
1:B:383:LEU:HB3	1:B:384:PRO:CD	2.48	0.40
1:A:156:TYR:CE1	1:B:147:PRO:HD2	2.56	0.40
1:B:17:GLU:HB3	1:B:316:TYR:CG	2.56	0.40
1:B:39:LEU:HA	1:B:39:LEU:HD23	1.93	0.40
1:B:78:PRO:HA	1:B:82:ARG:HG3	2.03	0.40
1:A:393:ASN:HD21	1:A:396:GLU:N	2.05	0.40
1:B:27:LYS:HG2	1:B:32:PHE:CZ	2.57	0.40
2:A:423:NAP:H8A	2:A:423:NAP:C5B	2.39	0.40
1:A:210:SER:HB2	1:A:251:ILE:HD13	2.04	0.40
1:A:123:GLY:O	1:A:262:GLU:HA	2.21	0.40
1:B:239:PHE:O	1:B:244:ILE:HG22	2.21	0.40
1:A:207:LEU:HB3	1:A:246:TYR:HD2	1.86	0.40
1:B:105:GLY:HA3	1:B:297:CYS:HA	2.04	0.40
1:A:79:ASP:O	1:A:83:VAL:HG23	2.22	0.40
1:A:154:ILE:CG2	1:B:144:PHE:HE2	2.35	0.40

There are no symmetry-related clashes.

## 5.3 Torsion angles [i](#)

### 5.3.1 Protein backbone [i](#)

In the following table, the Percentiles column shows the percent Ramachandran outliers of the chain as a percentile score with respect to all X-ray entries followed by that with respect to entries of similar resolution.

The Analysed column shows the number of residues for which the backbone conformation was analysed, and the total number of residues.

Mol	Chain	Analysed	Favoured	Allowed	Outliers	Percentiles	
1	A	391/422 (93%)	351 (90%)	33 (8%)	7 (2%)	11	34
1	B	392/422 (93%)	349 (89%)	37 (9%)	6 (2%)	13	40
All	All	783/844 (93%)	700 (89%)	70 (9%)	13 (2%)	11	36

All (13) Ramachandran outliers are listed below:

Mol	Chain	Res	Type
1	A	145	VAL
1	A	242	GLN
1	B	213	ASN
1	B	217	LYS
1	A	282	ALA
1	B	124	TRP
1	A	234	GLN
1	B	147	PRO
1	B	218	LYS
1	A	241	ALA
1	B	241	ALA
1	A	175	GLY
1	A	382	GLY

### 5.3.2 Protein sidechains ⓘ

In the following table, the Percentiles column shows the percent sidechain outliers of the chain as a percentile score with respect to all X-ray entries followed by that with respect to entries of similar resolution.

The Analysed column shows the number of residues for which the sidechain conformation was analysed, and the total number of residues.

Mol	Chain	Analysed	Rotameric	Outliers	Percentiles	
1	A	331/358 (92%)	314 (95%)	17 (5%)	29	63
1	B	331/358 (92%)	310 (94%)	21 (6%)	22	53
All	All	662/716 (92%)	624 (94%)	38 (6%)	25	58

All (38) residues with a non-rotameric sidechain are listed below:

Mol	Chain	Res	Type
1	A	5	ILE
1	A	39	LEU
1	A	71	VAL
1	A	80	GLU
1	A	116	ASN
1	A	119	ARG
1	A	171	ASN
1	A	184	ASN
1	A	207	LEU
1	A	217	LYS
1	A	234	GLN

*Continued on next page...*

*Continued from previous page...*

Mol	Chain	Res	Type
1	A	249	ARG
1	A	348	ASN
1	A	383	LEU
1	A	388	ARG
1	A	393	ASN
1	A	413	LYS
1	B	62	GLU
1	B	112	ILE
1	B	113	ILE
1	B	116	ASN
1	B	119	ARG
1	B	157	THR
1	B	166	THR
1	B	168	LEU
1	B	169	VAL
1	B	212	LYS
1	B	243	LYS
1	B	257	GLN
1	B	269	CYS
1	B	271	ASN
1	B	292	THR
1	B	301	LYS
1	B	348	ASN
1	B	383	LEU
1	B	388	ARG
1	B	393	ASN
1	B	413	LYS

Some sidechains can be flipped to improve hydrogen bonding and reduce clashes. All (28) such sidechains are listed below:

Mol	Chain	Res	Type
1	A	101	ASN
1	A	116	ASN
1	A	163	GLN
1	A	171	ASN
1	A	228	GLN
1	A	234	GLN
1	A	238	GLN
1	A	248	HIS
1	A	257	GLN
1	A	271	ASN
1	A	309	HIS

*Continued on next page...*

*Continued from previous page...*

Mol	Chain	Res	Type
1	A	315	HIS
1	A	393	ASN
1	A	404	ASN
1	B	14	GLN
1	B	90	GLN
1	B	96	ASN
1	B	101	ASN
1	B	116	ASN
1	B	228	GLN
1	B	248	HIS
1	B	257	GLN
1	B	271	ASN
1	B	309	HIS
1	B	315	HIS
1	B	348	ASN
1	B	393	ASN
1	B	404	ASN

### 5.3.3 RNA [i](#)

There are no RNA molecules in this entry.

## 5.4 Non-standard residues in protein, DNA, RNA chains [i](#)

There are no non-standard protein/DNA/RNA residues in this entry.

## 5.5 Carbohydrates [i](#)

There are no carbohydrates in this entry.

## 5.6 Ligand geometry [i](#)

4 ligands are modelled in this entry.

In the following table, the Counts columns list the number of bonds (or angles) for which Mogul statistics could be retrieved, the number of bonds (or angles) that are observed in the model and the number of bonds (or angles) that are defined in the chemical component dictionary. The Link column lists molecule types, if any, to which the group is linked. The Z score for a bond length (or angle) is the number of standard deviations the observed value is removed from the expected value. A bond length (or angle) with  $|Z| > 2$  is considered an outlier worth inspection. RMSZ is the root-mean-square of all Z scores of the bond lengths (or angles).

Mol	Type	Chain	Res	Link	Bond lengths			Bond angles		
					Counts	RMSZ	# Z  > 2	Counts	RMSZ	# Z  > 2
2	NAP	A	423	-	42,52,52	1.80	13 (30%)	54,80,80	1.97	10 (18%)
3	ICT	A	424	-	2,12,12	1.41	0	2,16,16	1.54	0
2	NAP	B	423	-	42,52,52	2.18	16 (38%)	54,80,80	2.29	10 (18%)
3	ICT	B	424	-	2,12,12	1.49	0	2,16,16	1.31	0

In the following table, the Chirals column lists the number of chiral outliers, the number of chiral centers analysed, the number of these observed in the model and the number defined in the chemical component dictionary. Similar counts are reported in the Torsion and Rings columns. '-' means no outliers of that kind were identified.

Mol	Type	Chain	Res	Link	Chirals	Torsions	Rings
2	NAP	A	423	-	-	0/27/67/67	0/5/5/5
3	ICT	A	424	-	-	0/6/16/16	0/0/0/0
2	NAP	B	423	-	-	0/27/67/67	0/5/5/5
3	ICT	B	424	-	-	0/6/16/16	0/0/0/0

All (29) bond length outliers are listed below:

Mol	Chain	Res	Type	Atoms	Z	Observed(Å)	Ideal(Å)
2	B	423	NAP	O4D-C1D	-4.97	1.34	1.41
2	A	423	NAP	O4D-C4D	-4.08	1.35	1.45
2	B	423	NAP	O4D-C4D	-3.96	1.35	1.45
2	B	423	NAP	O4B-C4B	-3.71	1.36	1.45
2	B	423	NAP	P2B-O2X	-3.55	1.41	1.54
2	B	423	NAP	PA-O5B	-3.45	1.43	1.59
2	A	423	NAP	P2B-O2X	-3.26	1.43	1.54
2	B	423	NAP	PN-O2N	-3.16	1.41	1.54
2	B	423	NAP	P2B-O2B	-3.14	1.50	1.60
2	B	423	NAP	PN-O5D	-3.06	1.45	1.59
2	B	423	NAP	PA-O1A	-2.99	1.40	1.51
2	A	423	NAP	PN-O2N	-2.86	1.42	1.54
2	A	423	NAP	PA-O5B	-2.83	1.46	1.59
2	B	423	NAP	C4A-N3A	-2.81	1.31	1.35
2	A	423	NAP	PA-O2A	-2.79	1.43	1.54
2	B	423	NAP	PN-O1N	-2.66	1.41	1.51
2	B	423	NAP	PA-O2A	-2.64	1.43	1.54
2	A	423	NAP	C5A-N7A	-2.58	1.30	1.39
2	A	423	NAP	P2B-O2B	-2.56	1.52	1.60
2	B	423	NAP	C5A-N7A	-2.55	1.30	1.39
2	A	423	NAP	PA-O1A	-2.53	1.41	1.51
2	A	423	NAP	PN-O5D	-2.45	1.47	1.59
2	A	423	NAP	O4B-C4B	-2.37	1.39	1.45

*Continued on next page...*

*Continued from previous page...*

Mol	Chain	Res	Type	Atoms	Z	Observed(Å)	Ideal(Å)
2	A	423	NAP	PN-O1N	-2.22	1.43	1.51
2	B	423	NAP	C5A-C4A	-2.17	1.35	1.40
2	A	423	NAP	C5A-C4A	-2.12	1.35	1.40
2	B	423	NAP	C2D-C3D	-2.10	1.47	1.53
2	A	423	NAP	C4A-N3A	-2.07	1.32	1.35
2	B	423	NAP	C8A-N7A	-2.07	1.30	1.34

All (20) bond angle outliers are listed below:

Mol	Chain	Res	Type	Atoms	Z	Observed(°)	Ideal(°)
2	A	423	NAP	N3A-C2A-N1A	-9.35	121.73	128.89
2	B	423	NAP	N3A-C2A-N1A	-8.44	122.43	128.89
2	B	423	NAP	O4D-C1D-N1N	-7.81	99.55	108.13
2	B	423	NAP	C4D-O4D-C1D	-6.75	102.30	109.72
2	A	423	NAP	C4D-O4D-C1D	-5.19	104.02	109.72
2	B	423	NAP	PN-O3-PA	-4.32	120.58	132.73
2	B	423	NAP	C4A-C5A-N7A	-3.77	106.01	109.48
2	A	423	NAP	O4D-C4D-C5D	-3.43	97.06	109.32
2	A	423	NAP	C4A-C5A-N7A	-2.92	106.79	109.48
2	A	423	NAP	O3X-P2B-O1X	-2.77	101.68	110.58
2	A	423	NAP	PN-O3-PA	-2.65	125.28	132.73
2	B	423	NAP	O3D-C3D-C2D	-2.36	104.15	111.83
2	A	423	NAP	C3B-C2B-C1B	-2.35	98.19	102.73
2	B	423	NAP	C5B-C4B-C3B	-2.34	105.94	115.21
2	B	423	NAP	O3X-P2B-O1X	-2.19	103.53	110.58
2	A	423	NAP	O4B-C4B-C5B	-2.15	101.62	109.32
2	A	423	NAP	O3D-C3D-C2D	-2.03	105.21	111.83
2	B	423	NAP	O3X-P2B-O2X	2.16	115.61	107.38
2	B	423	NAP	C2N-C3N-C4N	2.25	120.79	118.29
2	A	423	NAP	O2X-P2B-O1X	2.36	118.18	110.58

There are no chirality outliers.

There are no torsion outliers.

There are no ring outliers.

2 monomers are involved in 16 short contacts:

Mol	Chain	Res	Type	Clashes	Symm-Clashes
2	A	423	NAP	10	0
2	B	423	NAP	6	0



## 5.7 Other polymers

There are no such residues in this entry.

## 5.8 Polymer linkage issues

There are no chain breaks in this entry.

## 6 Fit of model and data ⓘ

### 6.1 Protein, DNA and RNA chains ⓘ

In the following table, the column labelled ‘#RSRZ> 2’ contains the number (and percentage) of RSRZ outliers, followed by percent RSRZ outliers for the chain as percentile scores relative to all X-ray entries and entries of similar resolution. The OWAB column contains the minimum, median, 95<sup>th</sup> percentile and maximum values of the occupancy-weighted average B-factor per residue. The column labelled ‘Q< 0.9’ lists the number of (and percentage) of residues with an average occupancy less than 0.9.

Mol	Chain	Analysed	<RSRZ>	#RSRZ>2		OWAB(Å <sup>2</sup> )	Q<0.9
1	A	397/422 (94%)	0.52	22 (5%)	29 18	39, 63, 110, 149	0
1	B	398/422 (94%)	0.52	24 (6%)	25 15	37, 63, 116, 154	0
All	All	795/844 (94%)	0.52	46 (5%)	26 16	37, 63, 114, 154	0

All (46) RSRZ outliers are listed below:

Mol	Chain	Res	Type	RSRZ
1	B	281	VAL	8.9
1	A	281	VAL	7.4
1	A	284	GLY	7.3
1	A	282	ALA	6.1
1	A	285	TYR	5.5
1	B	284	GLY	5.1
1	B	282	ALA	4.7
1	A	283	GLN	4.5
1	B	285	TYR	4.3
1	B	283	GLN	4.0
1	B	236	LYS	3.8
1	B	235	TYR	3.7
1	A	134	ALA	3.3
1	B	202	SER	3.3
1	B	239	PHE	3.2
1	A	237	SER	3.2
1	A	245	TRP	3.2
1	A	244	ILE	3.1
1	B	231	TYR	3.1
1	B	245	TRP	3.1
1	B	244	ILE	3.1
1	B	241	ALA	3.0
1	A	236	LYS	2.9
1	A	240	GLU	2.8

*Continued on next page...*

*Continued from previous page...*

Mol	Chain	Res	Type	RSRZ
1	A	133	HIS	2.8
1	A	286	GLY	2.7
1	A	174	GLU	2.6
1	A	271	ASN	2.6
1	B	246	TYR	2.5
1	B	240	GLU	2.4
1	B	207	LEU	2.4
1	A	246	TYR	2.4
1	B	237	SER	2.4
1	B	213	ASN	2.4
1	A	235	TYR	2.4
1	B	327	THR	2.4
1	A	238	GLN	2.3
1	A	241	ALA	2.2
1	B	271	ASN	2.2
1	A	201	LEU	2.2
1	B	243	LYS	2.1
1	A	145	VAL	2.1
1	B	227	PHE	2.0
1	B	189	ILE	2.0
1	A	322	GLY	2.0
1	B	154	ILE	2.0

## 6.2 Non-standard residues in protein, DNA, RNA chains [i](#)

There are no non-standard protein/DNA/RNA residues in this entry.

## 6.3 Carbohydrates [i](#)

There are no carbohydrates in this entry.

## 6.4 Ligands [i](#)

In the following table, the Atoms column lists the number of modelled atoms in the group and the number defined in the chemical component dictionary. LLDF column lists the quality of electron density of the group with respect to its neighbouring residues in protein, DNA or RNA chains. The B-factors column lists the minimum, median, 95<sup>th</sup> percentile and maximum values of B factors of atoms in the group. The column labelled 'Q< 0.9' lists the number of atoms with occupancy less than 0.9.

Mol	Type	Chain	Res	Atoms	RSCC	RSR	LLDF	B-factors( $\text{\AA}^2$ )	Q<0.9
3	ICT	B	424	13/13	0.66	0.39	4.93	106,111,111,112	0
3	ICT	A	424	13/13	0.81	0.37	3.33	118,120,121,122	0
2	NAP	B	423	48/48	0.96	0.17	-0.86	46,58,68,73	0
2	NAP	A	423	48/48	0.94	0.18	-1.02	61,67,78,82	0

## 6.5 Other polymers [i](#)

There are no such residues in this entry.