



Full wwPDB X-ray Structure Validation Report ⓘ

Jan 31, 2016 – 08:51 PM GMT

PDB ID : 1MD2
Title : CHOLERA TOXIN B-PENTAMER WITH DECAVALENT LIGAND BMSC-0013
Authors : Zhang, Z.; Merritt, E.A.; Ahn, M.; Roach, C.; Hol, W.G.J.; Fan, E.
Deposited on : 2002-08-06
Resolution : 1.45 Å(reported)

This is a Full wwPDB X-ray Structure Validation Report for a publicly released PDB entry.
We welcome your comments at validation@mail.wwpdb.org
A user guide is available at
<http://wwpdb.org/validation/2016/XrayValidationReportHelp>
with specific help available everywhere you see the ⓘ symbol.

The following versions of software and data (see [references ⓘ](#)) were used in the production of this report:

MolProbity : 4.02b-467
Mogul : 1.7 (RC4), CSD as536be (2015)
Xtriage (Phenix) : 1.9-1692
EDS : rb-20026688
Percentile statistics : 20151230.v01 (using entries in the PDB archive December 30th 2015)
Refmac : 5.8.0135
CCP4 : 6.5.0
Ideal geometry (proteins) : Engh & Huber (2001)
Ideal geometry (DNA, RNA) : Parkinson et al. (1996)
Validation Pipeline (wwPDB-VP) : trunk26865

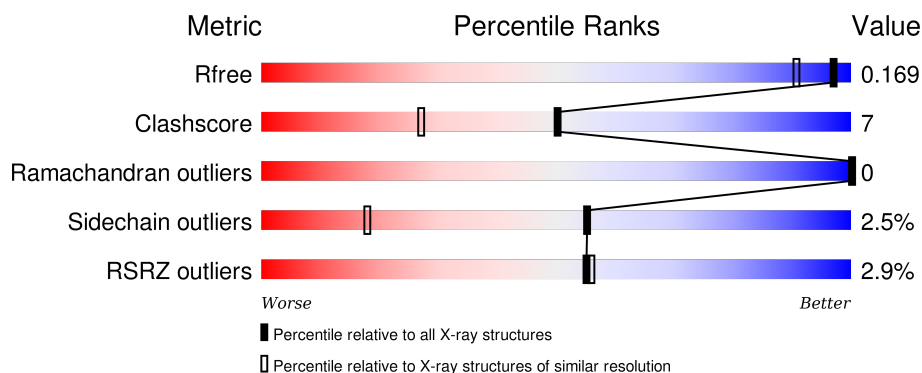
1 Overall quality at a glance

The following experimental techniques were used to determine the structure:

X-RAY DIFFRACTION

The reported resolution of this entry is 1.45 Å.

Percentile scores (ranging between 0-100) for global validation metrics of the entry are shown in the following graphic. The table shows the number of entries on which the scores are based.



Metric	Whole archive (#Entries)	Similar resolution (#Entries, resolution range(Å))
R_{free}	91344	1278 (1.48-1.44)
Clashscore	102246	1336 (1.48-1.44)
Ramachandran outliers	100387	1320 (1.48-1.44)
Sidechain outliers	100360	1320 (1.48-1.44)
RSRZ outliers	91569	1279 (1.48-1.44)

The table below summarises the geometric issues observed across the polymeric chains and their fit to the electron density. The red, orange, yellow and green segments on the lower bar indicate the fraction of residues that contain outliers for ≥ 3 , 2, 1 and 0 types of geometric quality criteria. A grey segment represents the fraction of residues that are not modelled. The numeric value for each fraction is indicated below the corresponding segment, with a dot representing fractions $\leq 5\%$. The upper red bar (where present) indicates the fraction of residues that have poor fit to the electron density. The numeric value is given above the bar.

Mol	Chain	Length	Quality of chain
1	D	103	<div> <div>3%</div> <div>78%</div> <div>19%</div> <div>..</div> </div>
1	E	103	<div> <div>3%</div> <div>83%</div> <div>16%</div> <div>..</div> </div>
1	F	103	<div> <div>5%</div> <div>82%</div> <div>17%</div> <div>.</div> </div>
1	G	103	<div> <div>2%</div> <div>83%</div> <div>17%</div> <div>.</div> </div>
1	H	103	<div> <div>2%</div> <div>84%</div> <div>15%</div> <div>.</div> </div>

The following table lists non-polymeric compounds, carbohydrate monomers and non-standard residues in protein, DNA, RNA chains that are outliers for geometric or electron-density-fit criteria:

Mol	Type	Chain	Res	Chirality	Geometry	Clashes	Electron density
3	233	D	2201[A]	-	-	-	X
3	233	D	2203[A]	-	-	-	X
3	233	D	2203[B]	-	-	-	X
3	233	F	1207	-	-	-	X
4	SQ	D	2202[B]	X	-	-	-
4	SQ	E	1205	X	-	-	X

2 Entry composition [i](#)

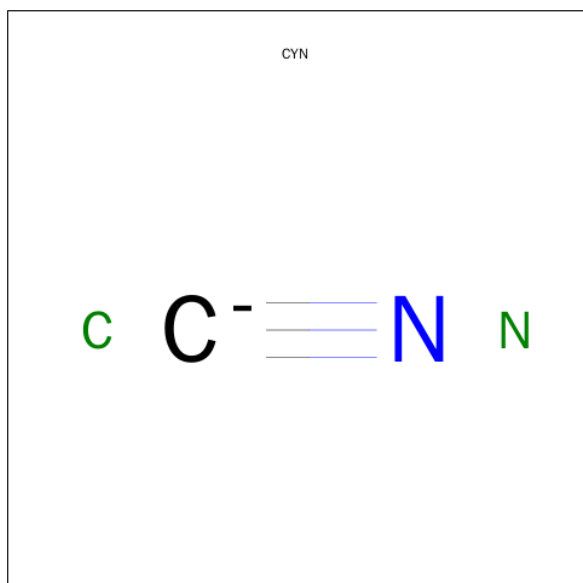
There are 5 unique types of molecules in this entry. The entry contains 4967 atoms, of which 0 are hydrogens and 0 are deuteriums.

In the tables below, the ZeroOcc column contains the number of atoms modelled with zero occupancy, the AltConf column contains the number of residues with at least one atom in alternate conformation and the Trace column contains the number of residues modelled with at most 2 atoms.

- Molecule 1 is a protein called CHOLERA TOXIN B SUBUNIT.

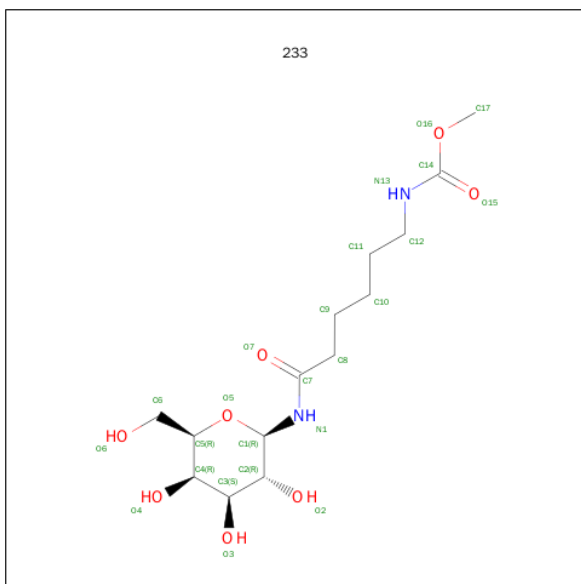
Mol	Chain	Residues	Atoms					ZeroOcc	AltConf	Trace
1	D	103	Total	C	N	O	S	0	3	0
			823	517	143	156	7			
1	E	103	Total	C	N	O	S	0	2	0
			821	515	143	156	7			
1	F	103	Total	C	N	O	S	0	1	0
			816	511	142	156	7			
1	G	103	Total	C	N	O	S	0	3	0
			822	516	143	156	7			
1	H	103	Total	C	N	O	S	0	2	0
			818	513	142	156	7			

- Molecule 2 is CYANIDE ION (three-letter code: CYN) (formula: CN).



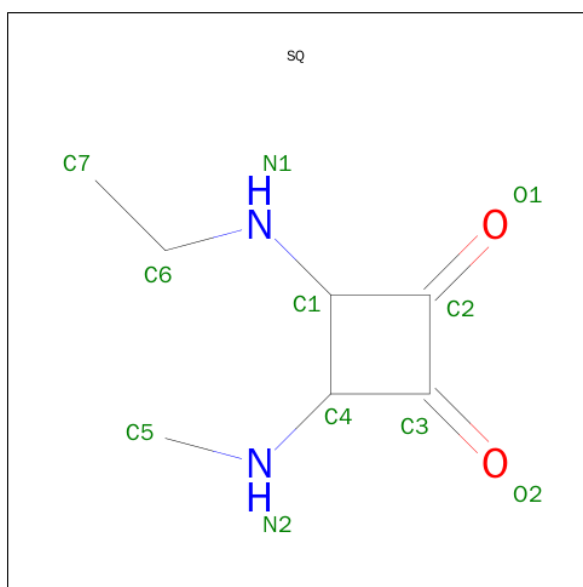
Mol	Chain	Residues	Atoms			ZeroOcc	AltConf
2	F	1	Total	C	N	0	0
			2	1	1		

- Molecule 3 is [5-(3,4,5-TRIHIDROXY-6-HYDROXYMETHYL-TETRAHYDRO-PYRAN-2-YLCARBAMOYL)-PENTYL]-CARBAMIC ACID METHYL ESTER (three-letter code: 233) (formula: $C_{14}H_{26}N_2O_8$).



Mol	Chain	Residues	Atoms				ZeroOcc	AltConf
3	D	1	Total	C	N	O	0	1
			48	28	4	16		
3	D	1	Total	C	N	O	0	1
			48	28	4	16		
3	E	1	Total	C	N	O	0	0
			24	14	2	8		
3	E	1	Total	C	N	O	0	0
			24	14	2	8		
3	F	1	Total	C	N	O	0	0
			24	14	2	8		

- Molecule 4 is 3-ETHYLAMINO-4-METHYLAMINO-CYCLOBUTANE-1,2-DIONE (three-letter code: SQ) (formula: $C_7H_{12}N_2O_2$).



Mol	Chain	Residues	Atoms				ZeroOcc	AltConf
4	D	1	Total	C	N	O	0	1
			12	8	2	2		
4	E	1	Total	C	N	O	0	0
			11	7	2	2		

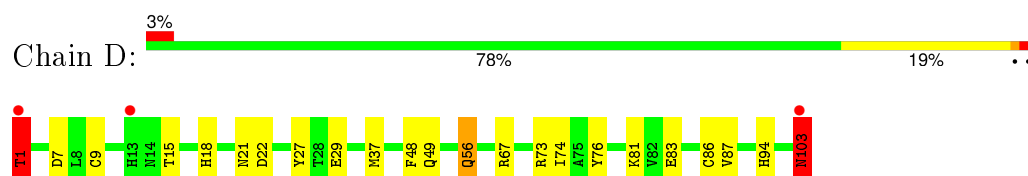
- Molecule 5 is water.

Mol	Chain	Residues	Atoms		ZeroOcc	AltConf
5	D	148	Total	O	0	0
			148	148		
5	E	124	Total	O	0	0
			124	124		
5	F	125	Total	O	0	0
			125	125		
5	G	130	Total	O	0	0
			130	130		
5	H	147	Total	O	0	0
			147	147		

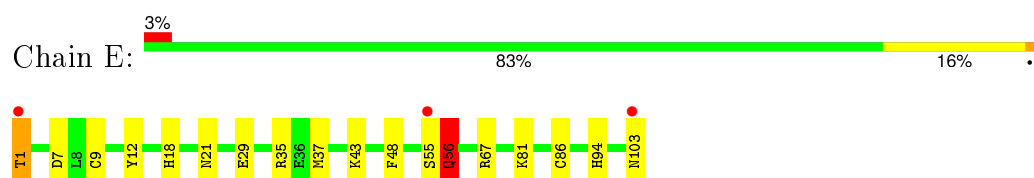
3 Residue-property plots [i](#)

These plots are drawn for all protein, RNA and DNA chains in the entry. The first graphic for a chain summarises the proportions of errors displayed in the second graphic. The second graphic shows the sequence view annotated by issues in geometry and electron density. Residues are color-coded according to the number of geometric quality criteria for which they contain at least one outlier: green = 0, yellow = 1, orange = 2 and red = 3 or more. A red dot above a residue indicates a poor fit to the electron density ($RSRZ > 2$). Stretches of 2 or more consecutive residues without any outlier are shown as a green connector. Residues present in the sample, but not in the model, are shown in grey.

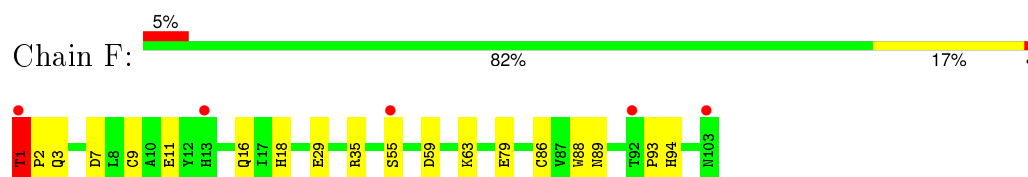
- Molecule 1: CHOLERA TOXIN B SUBUNIT



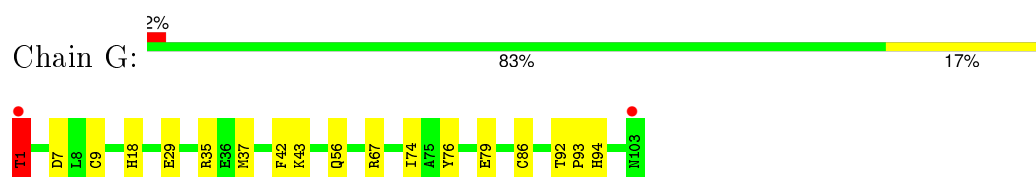
- Molecule 1: CHOLERA TOXIN B SUBUNIT



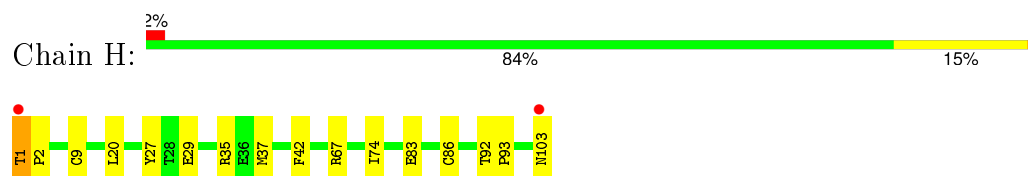
- Molecule 1: CHOLERA TOXIN B SUBUNIT



- Molecule 1: CHOLERA TOXIN B SUBUNIT



- Molecule 1: CHOLERA TOXIN B SUBUNIT



4 Data and refinement statistics

Property	Value	Source
Space group	C 1 2 1	Depositor
Cell constants a, b, c, α , β , γ	102.12Å 66.18Å 78.22Å 90.00° 106.33° 90.00°	Depositor
Resolution (Å)	25.00 – 1.45 24.54 – 1.44	Depositor EDS
% Data completeness (in resolution range)	(Not available) (25.00-1.45) 89.8 (24.54-1.44)	Depositor EDS
R_{merge}	0.05	Depositor
R_{sym}	(Not available)	Depositor
$\langle I/\sigma(I) \rangle$ ¹	1.10 (at 1.44Å)	Xtriage
Refinement program	REFMAC	Depositor
R, R_{free}	0.125 , 0.164 0.135 , 0.169	Depositor DCC
R_{free} test set	4071 reflections (5.28%)	DCC
Wilson B-factor (Å ²)	12.6	Xtriage
Anisotropy	0.560	Xtriage
Bulk solvent k_{sol} (e/Å ³), B_{sol} (Å ²)	0.42 , 64.3	EDS
Estimated twinning fraction	No twinning to report.	Xtriage
L-test for twinning ²	$\langle L \rangle = 0.50$, $\langle L^2 \rangle = 0.33$	Xtriage
Outliers	2 of 81423 reflections (0.002%)	Xtriage
F_o, F_c correlation	0.97	EDS
Total number of atoms	4967	wwPDB-VP
Average B, all atoms (Å ²)	19.0	wwPDB-VP

Xtriage's analysis on translational NCS is as follows: *The largest off-origin peak in the Patterson function is 6.23% of the height of the origin peak. No significant pseudotranslation is detected.*

¹Intensities estimated from amplitudes.

²Theoretical values of $\langle |L| \rangle$, $\langle L^2 \rangle$ for acentric reflections are 0.5, 0.375 respectively for untwinned datasets, and 0.333, 0.2 for perfectly twinned datasets.

5 Model quality ⓘ

5.1 Standard geometry ⓘ

Bond lengths and bond angles in the following residue types are not validated in this section: SQ, CYN, CSS, 233

The Z score for a bond length (or angle) is the number of standard deviations the observed value is removed from the expected value. A bond length (or angle) with $|Z| > 5$ is considered an outlier worth inspection. RMSZ is the root-mean-square of all Z scores of the bond lengths (or angles).

Mol	Chain	Bond lengths		Bond angles	
		RMSZ	$\# Z > 5$	RMSZ	$\# Z > 5$
1	D	0.92	1/838 (0.1%)	1.53	14/1129 (1.2%)
1	E	0.82	1/830 (0.1%)	1.34	7/1118 (0.6%)
1	F	0.95	1/821 (0.1%)	1.34	6/1107 (0.5%)
1	G	0.91	1/838 (0.1%)	1.47	10/1129 (0.9%)
1	H	0.98	2/829 (0.2%)	1.43	5/1118 (0.4%)
All	All	0.92	6/4156 (0.1%)	1.43	42/5601 (0.7%)

All (6) bond length outliers are listed below:

Mol	Chain	Res	Type	Atoms	Z	Observed(Å)	Ideal(Å)
1	H	83	GLU	CD-OE1	-7.25	1.17	1.25
1	G	29	GLU	CB-CG	-5.88	1.41	1.52
1	H	29	GLU	CB-CG	-5.87	1.41	1.52
1	D	29	GLU	CB-CG	-5.55	1.41	1.52
1	E	29	GLU	CB-CG	-5.41	1.41	1.52
1	F	29	GLU	CB-CG	-5.39	1.41	1.52

All (42) bond angle outliers are listed below:

Mol	Chain	Res	Type	Atoms	Z	Observed(°)	Ideal(°)
1	H	35	ARG	NE-CZ-NH2	-14.71	112.94	120.30
1	G	67	ARG	NE-CZ-NH2	-12.89	113.86	120.30
1	D	67	ARG	NE-CZ-NH2	-12.60	114.00	120.30
1	D	7	ASP	CB-CG-OD1	8.56	126.00	118.30
1	D	73	ARG	NE-CZ-NH1	-8.40	116.10	120.30
1	G	7	ASP	CB-CG-OD1	8.05	125.54	118.30
1	D	48	PHE	CB-CG-CD1	-7.89	115.27	120.80
1	G	42	PHE	CB-CG-CD1	7.39	125.97	120.80
1	E	48	PHE	CB-CG-CD1	-7.22	115.75	120.80
1	F	11	GLU	OE1-CD-OE2	-7.14	114.73	123.30

Continued on next page...

Continued from previous page...

Mol	Chain	Res	Type	Atoms	Z	Observed(°)	Ideal(°)
1	D	73	ARG	CD-NE-CZ	7.00	133.41	123.60
1	D	67	ARG	NE-CZ-NH1	6.99	123.79	120.30
1	D	22	ASP	CB-CG-OD1	6.91	124.51	118.30
1	E	67	ARG	NE-CZ-NH1	6.88	123.74	120.30
1	G	76	TYR	CB-CG-CD2	-6.82	116.91	121.00
1	H	27	TYR	CG-CD2-CE2	-6.75	115.90	121.30
1	D	103	ASN	CA-CB-CG	6.73	128.20	113.40
1	D	1	THR	N-CA-CB	-6.60	97.76	110.30
1	G	76	TYR	CB-CG-CD1	6.38	124.83	121.00
1	F	1	THR	N-CA-CB	-6.28	98.36	110.30
1	E	7	ASP	CB-CG-OD1	5.80	123.52	118.30
1	E	56	GLN	CA-CB-CG	5.77	126.09	113.40
1	G	1	THR	N-CA-CB	-5.68	99.51	110.30
1	D	83	GLU	OE1-CD-OE2	-5.63	116.54	123.30
1	F	35	ARG	NE-CZ-NH2	-5.56	117.52	120.30
1	F	7	ASP	CB-CG-OD1	5.53	123.28	118.30
1	D	83	GLU	CG-CD-OE1	5.52	129.33	118.30
1	E	12	TYR	CB-CG-CD2	-5.47	117.72	121.00
1	D	76	TYR	CB-CG-CD2	-5.43	117.74	121.00
1	E	67	ARG	NE-CZ-NH2	-5.41	117.59	120.30
1	H	67	ARG	NE-CZ-NH2	-5.41	117.60	120.30
1	D	76	TYR	CB-CG-CD1	5.39	124.23	121.00
1	F	79	GLU	OE1-CD-OE2	-5.38	116.85	123.30
1	G	35	ARG	NE-CZ-NH2	-5.32	117.64	120.30
1	F	59	ASP	CB-CG-OD2	5.28	123.05	118.30
1	E	48	PHE	CB-CG-CD2	5.27	124.49	120.80
1	G	56	GLN	CA-CB-CG	5.26	124.97	113.40
1	G	79	GLU	OE1-CD-OE2	-5.22	117.03	123.30
1	G	67	ARG	NE-CZ-NH1	5.13	122.86	120.30
1	H	1	THR	CA-CB-CG2	5.10	119.54	112.40
1	D	27	TYR	CB-CG-CD1	5.09	124.06	121.00
1	H	83	GLU	OE1-CD-OE2	5.05	129.36	123.30

There are no chirality outliers.

There are no planarity outliers.

5.2 Too-close contacts ⓘ

In the following table, the Non-H and H(model) columns list the number of non-hydrogen atoms and hydrogen atoms in the chain respectively. The H(added) column lists the number of hydrogen atoms added and optimized by MolProbity. The Clashes column lists the number of clashes within the asymmetric unit, whereas Symm-Clashes lists symmetry related clashes.

Mol	Chain	Non-H	H(model)	H(added)	Clashes	Symm-Clashes
1	D	823	0	828	19	0
1	E	821	0	827	9	0
1	F	816	0	818	16	1
1	G	822	0	828	18	0
1	H	818	0	819	14	0
2	F	2	0	0	0	0
3	D	96	0	96	4	0
3	E	48	0	49	0	0
3	F	24	0	24	1	0
4	D	12	0	8	0	0
4	E	11	0	7	0	0
5	D	148	0	0	1	1
5	E	124	0	0	1	0
5	F	125	0	0	0	0
5	G	130	0	0	3	1
5	H	147	0	0	3	0
All	All	4967	0	4304	60	2

The all-atom clashscore is defined as the number of clashes found per 1000 atoms (including hydrogen atoms). The all-atom clashscore for this structure is 7.

All (60) close contacts within the same asymmetric unit are listed below, sorted by their clash magnitude.

Atom-1	Atom-2	Interatomic distance (Å)	Clash overlap (Å)
1:D:56:GLN:H	1:D:56:GLN:HE21	1.08	0.91
1:E:1:THR:HG22	1:F:93:PRO:HD2	1.53	0.90
1:D:18:HIS:HE1	1:D:94:HIS:HD2	1.22	0.88
3:D:2201[A]:233:H24	3:D:2203[A]:233:O15	1.74	0.86
1:E:56:GLN:H	1:E:56:GLN:HE21	1.23	0.85
1:F:3:GLN:HE22	1:G:92:THR:HG22	1.47	0.79
1:D:103:ASN:HD22	1:D:103:ASN:H	1.34	0.73
1:E:21:ASN:HA	1:E:81[A]:LYS:HE3	1.71	0.71
1:F:16:GLN:HE21	1:F:89:ASN:HD22	1.38	0.71
1:D:18:HIS:CE1	1:D:94:HIS:HD2	2.09	0.70
1:G:92:THR:HG23	5:G:155:HOH:O	1.96	0.66
1:H:9[B]:CSS:HB3	1:H:86:CYS:SG	2.35	0.66
1:F:9[B]:CSS:HB3	1:F:86:CYS:SG	2.35	0.66
1:G:1:THR:HG22	1:H:93:PRO:HD2	1.79	0.65
1:E:1:THR:HG22	1:F:93:PRO:CD	2.27	0.63
1:D:74[B]:ILE:HD13	5:E:1215:HOH:O	1.98	0.62
1:D:103:ASN:ND2	1:D:103:ASN:H	1.96	0.61
1:H:1:THR:N	5:H:207:HOH:O	2.30	0.61

Continued on next page...

Continued from previous page...

Atom-1	Atom-2	Interatomic distance (Å)	Clash overlap (Å)
1:D:18:HIS:HE1	1:D:94:HIS:CD2	2.11	0.60
1:D:37:MET:CE	1:H:1:THR:CG2	2.80	0.59
1:G:1:THR:HG22	1:H:93:PRO:CD	2.33	0.58
1:H:92:THR:HG23	5:H:182:HOH:O	2.04	0.58
1:D:56:GLN:N	1:D:56:GLN:HE21	1.92	0.58
3:D:2201[B]:233:H26	3:D:2201[B]:233:H20	1.86	0.57
1:H:1:THR:HG23	1:H:2:PRO:HD2	1.87	0.56
1:G:18:HIS:HE1	1:G:94:HIS:HD2	1.54	0.56
1:F:3:GLN:NE2	1:G:92:THR:HG22	2.19	0.56
1:F:18:HIS:HE1	1:F:94:HIS:ND1	2.04	0.55
1:E:81[A]:LYS:NZ	1:E:103:ASN:HB2	2.22	0.55
1:F:1:THR:HG23	1:F:2:PRO:HD2	1.89	0.55
3:D:2201[A]:233:H24	3:D:2203[A]:233:C14	2.35	0.55
1:E:9[B]:CSS:HB3	1:E:86:CYS:SG	2.47	0.54
1:G:9[B]:CSS:HB3	1:G:86:CYS:SG	2.48	0.53
1:E:18:HIS:NE2	1:E:94:HIS:HD2	2.05	0.53
1:D:37:MET:HE1	1:H:1:THR:CG2	2.40	0.52
1:D:9[B]:CSS:HB3	1:D:86:CYS:SG	2.50	0.52
1:D:21:ASN:HA	1:D:81[B]:LYS:HE3	1.91	0.51
1:G:18:HIS:CE1	1:G:94:HIS:HD2	2.28	0.51
5:D:2220:HOH:O	1:H:74[A]:ILE:HD13	2.11	0.50
1:G:1:THR:HG21	1:H:37:MET:HE3	1.93	0.49
1:G:74[B]:ILE:HD13	5:H:126:HOH:O	2.13	0.48
1:D:1:THR:OG1	1:E:35:ARG:NH1	2.47	0.48
1:F:1:THR:HG22	1:G:93:PRO:HD2	1.95	0.47
1:D:37:MET:HE3	1:H:1:THR:HG21	1.95	0.47
1:H:20:LEU:HD13	1:H:42:PHE:CZ	2.50	0.47
3:D:2201[B]:233:H26	3:D:2201[B]:233:C11	2.46	0.45
1:D:21:ASN:OD1	1:D:81[B]:LYS:HE3	2.17	0.45
1:F:1:THR:HG21	1:G:37:MET:CE	2.48	0.44
1:D:49:GLN:OE1	1:H:1:THR:HG21	2.18	0.43
1:G:43[B]:LYS:NZ	5:G:231:HOH:O	2.50	0.43
1:F:3:GLN:HE22	1:G:92:THR:CG2	2.24	0.43
1:F:1:THR:HG21	1:G:37:MET:HE3	2.01	0.43
1:G:1:THR:N	5:G:219:HOH:O	2.19	0.42
1:F:16:GLN:NE2	1:F:89:ASN:HD22	2.11	0.42
1:F:88:TRP:CD1	3:F:1207:233:H3	2.55	0.42
1:D:37:MET:HE1	1:H:1:THR:HG22	2.01	0.42
1:F:1:THR:CG2	1:G:37:MET:HE1	2.50	0.41
1:F:1:THR:CG2	1:G:37:MET:CE	2.99	0.41
1:D:1:THR:HG21	1:E:37:MET:HE3	2.01	0.41

Continued on next page...

Continued from previous page...

Atom-1	Atom-2	Interatomic distance (Å)	Clash overlap (Å)
1:D:15:THR:HA	1:D:87:VAL:O	2.22	0.40

All (2) symmetry-related close contacts are listed below. The label for Atom-2 includes the symmetry operator and encoded unit-cell translations to be applied.

Atom-1	Atom-2	Interatomic distance (Å)	Clash overlap (Å)
1:F:55:SER:OG	1:F:55:SER:OG[2_555]	1.89	0.31
5:D:2310:HOH:O	5:G:215:HOH:O[3_445]	2.19	0.01

5.3 Torsion angles [i](#)

5.3.1 Protein backbone [i](#)

In the following table, the Percentiles column shows the percent Ramachandran outliers of the chain as a percentile score with respect to all X-ray entries followed by that with respect to entries of similar resolution.

The Analysed column shows the number of residues for which the backbone conformation was analysed, and the total number of residues.

Mol	Chain	Analysed	Favoured	Allowed	Outliers	Percentiles	
1	D	102/103 (99%)	101 (99%)	1 (1%)	0	100	100
1	E	101/103 (98%)	100 (99%)	1 (1%)	0	100	100
1	F	100/103 (97%)	99 (99%)	1 (1%)	0	100	100
1	G	102/103 (99%)	101 (99%)	1 (1%)	0	100	100
1	H	101/103 (98%)	100 (99%)	1 (1%)	0	100	100
All	All	506/515 (98%)	501 (99%)	5 (1%)	0	100	100

There are no Ramachandran outliers to report.

5.3.2 Protein sidechains [i](#)

In the following table, the Percentiles column shows the percent sidechain outliers of the chain as a percentile score with respect to all X-ray entries followed by that with respect to entries of similar resolution.

The Analysed column shows the number of residues for which the sidechain conformation was analysed, and the total number of residues.

Mol	Chain	Analysed	Rotameric	Outliers	Percentiles	
1	D	90/88 (102%)	87 (97%)	3 (3%)	45	10
1	E	89/88 (101%)	85 (96%)	4 (4%)	34	5
1	F	88/88 (100%)	86 (98%)	2 (2%)	58	21
1	G	90/88 (102%)	89 (99%)	1 (1%)	80	52
1	H	89/88 (101%)	88 (99%)	1 (1%)	80	52
All	All	446/440 (101%)	435 (98%)	11 (2%)	55	18

All (11) residues with a non-rotameric sidechain are listed below:

Mol	Chain	Res	Type
1	D	1	THR
1	D	56	GLN
1	D	103	ASN
1	E	1	THR
1	E	43	LYS
1	E	55	SER
1	E	56	GLN
1	F	1	THR
1	F	63	LYS
1	G	1	THR
1	H	103	ASN

Some sidechains can be flipped to improve hydrogen bonding and reduce clashes. All (16) such sidechains are listed below:

Mol	Chain	Res	Type
1	D	14	ASN
1	D	18	HIS
1	D	56	GLN
1	D	94	HIS
1	D	103	ASN
1	E	56	GLN
1	E	94	HIS
1	E	103	ASN
1	F	3	GLN
1	F	16	GLN
1	F	18	HIS
1	F	103	ASN
1	G	18	HIS
1	G	94	HIS
1	G	103	ASN

Continued on next page...

Continued from previous page...

Mol	Chain	Res	Type
1	H	103	ASN

5.3.3 RNA ⓘ

There are no RNA molecules in this entry.

5.4 Non-standard residues in protein, DNA, RNA chains ⓘ

10 non-standard protein/DNA/RNA residues are modelled in this entry.

In the following table, the Counts columns list the number of bonds (or angles) for which Mogul statistics could be retrieved, the number of bonds (or angles) that are observed in the model and the number of bonds (or angles) that are defined in the chemical component dictionary. The Link column lists molecule types, if any, to which the group is linked. The Z score for a bond length (or angle) is the number of standard deviations the observed value is removed from the expected value. A bond length (or angle) with $|Z| > 2$ is considered an outlier worth inspection. RMSZ is the root-mean-square of all Z scores of the bond lengths (or angles).

Mol	Type	Chain	Res	Link	Bond lengths			Bond angles		
					Counts	RMSZ	$\# Z > 2$	Counts	RMSZ	$\# Z > 2$
1	CSS	D	9[A]	-	4,5,7	0.84	0	3,5,8	1.18	0
1	CSS	D	9[B]	-	4,6,7	0.77	0	3,6,8	6.27	1 (33%)
1	CSS	E	9[A]	-	4,5,7	1.00	0	3,5,8	1.10	0
1	CSS	E	9[B]	-	4,6,7	0.94	0	3,6,8	7.66	1 (33%)
1	CSS	F	9[A]	-	4,5,7	1.03	0	3,5,8	1.95	1 (33%)
1	CSS	F	9[B]	-	4,6,7	0.66	0	3,6,8	8.77	2 (66%)
1	CSS	G	9[A]	-	4,5,7	1.02	0	3,5,8	1.44	0
1	CSS	G	9[B]	-	4,6,7	1.17	0	3,6,8	7.91	1 (33%)
1	CSS	H	9[A]	-	4,5,7	2.30	1 (25%)	3,5,8	1.83	1 (33%)
1	CSS	H	9[B]	-	4,6,7	1.34	1 (25%)	3,6,8	8.87	2 (66%)

In the following table, the Chirals column lists the number of chiral outliers, the number of chiral centers analysed, the number of these observed in the model and the number defined in the chemical component dictionary. Similar counts are reported in the Torsion and Rings columns. '-' means no outliers of that kind were identified.

Mol	Type	Chain	Res	Link	Chirals	Torsions	Rings
1	CSS	D	9[A]	-	-	0/1/4/7	0/0/0/0
1	CSS	D	9[B]	-	-	0/1/5/7	0/0/0/0
1	CSS	E	9[A]	-	-	0/1/4/7	0/0/0/0

Continued on next page...

Continued from previous page...

Mol	Type	Chain	Res	Link	Chirals	Torsions	Rings
1	CSS	E	9[B]	-	-	0/1/5/7	0/0/0/0
1	CSS	F	9[A]	-	-	0/1/4/7	0/0/0/0
1	CSS	F	9[B]	-	-	0/1/5/7	0/0/0/0
1	CSS	G	9[A]	-	-	0/1/4/7	0/0/0/0
1	CSS	G	9[B]	-	-	0/1/5/7	0/0/0/0
1	CSS	H	9[A]	-	-	0/1/4/7	0/0/0/0
1	CSS	H	9[B]	-	-	0/1/5/7	0/0/0/0

All (2) bond length outliers are listed below:

Mol	Chain	Res	Type	Atoms	Z	Observed(Å)	Ideal(Å)
1	H	9[A]	CSS	CB-SG	-4.17	1.72	1.81
1	H	9[B]	CSS	CB-SG	2.20	1.89	1.81

All (9) bond angle outliers are listed below:

Mol	Chain	Res	Type	Atoms	Z	Observed(°)	Ideal(°)
1	F	9[A]	CSS	O-C-CA	-3.38	116.69	125.49
1	F	9[B]	CSS	O-C-CA	-3.38	116.69	125.49
1	H	9[A]	CSS	O-C-CA	-3.07	117.50	125.49
1	H	9[B]	CSS	O-C-CA	-3.07	117.50	125.49
1	D	9[B]	CSS	CB-SG-SD	10.75	125.02	103.94
1	E	9[B]	CSS	CB-SG-SD	13.18	129.79	103.94
1	G	9[B]	CSS	CB-SG-SD	13.59	130.58	103.94
1	F	9[B]	CSS	CB-SG-SD	14.80	132.95	103.94
1	H	9[B]	CSS	CB-SG-SD	15.06	133.46	103.94

There are no chirality outliers.

There are no torsion outliers.

There are no ring outliers.

5 monomers are involved in 5 short contacts:

Mol	Chain	Res	Type	Clashes	Symm-Clashes
1	D	9[B]	CSS	1	0
1	E	9[B]	CSS	1	0
1	F	9[B]	CSS	1	0
1	G	9[B]	CSS	1	0
1	H	9[B]	CSS	1	0

5.5 Carbohydrates [i](#)

There are no carbohydrates in this entry.

5.6 Ligand geometry [i](#)

Of 11 ligands modelled in this entry, 1 is modelled with single atom - leaving 10 for Mogul analysis.

In the following table, the Counts columns list the number of bonds (or angles) for which Mogul statistics could be retrieved, the number of bonds (or angles) that are observed in the model and the number of bonds (or angles) that are defined in the chemical component dictionary. The Link column lists molecule types, if any, to which the group is linked. The Z score for a bond length (or angle) is the number of standard deviations the observed value is removed from the expected value. A bond length (or angle) with $|Z| > 2$ is considered an outlier worth inspection. RMSZ is the root-mean-square of all Z scores of the bond lengths (or angles).

Mol	Type	Chain	Res	Link	Bond lengths			Bond angles		
					Counts	RMSZ	# Z > 2	Counts	RMSZ	# Z > 2
3	233	D	2201[A]	4	24,24,24	2.90	3 (12%)	31,31,31	3.66	6 (19%)
3	233	D	2201[B]	4	24,24,24	3.12	2 (8%)	31,31,31	3.03	7 (22%)
4	SQ	D	2202[B]	3	8,11,11	4.43	4 (50%)	6,15,15	4.54	4 (66%)
3	233	D	2203[A]	4	24,24,24	3.07	4 (16%)	31,31,31	2.08	5 (16%)
3	233	D	2203[B]	4	24,24,24	3.21	5 (20%)	31,31,31	4.86	7 (22%)
3	233	E	1204	4	24,24,24	3.02	7 (29%)	31,31,31	4.05	8 (25%)
4	SQ	E	1205	3	8,11,11	4.38	3 (37%)	6,15,15	5.18	3 (50%)
3	233	E	1206	4	24,24,24	2.63	4 (16%)	31,31,31	2.16	14 (45%)
3	233	F	1207	-	24,24,24	3.39	5 (20%)	31,31,31	3.99	12 (38%)
2	CYN	F	1208	-	0,1,1	0.00	-	0,0,0	0.00	-

In the following table, the Chirals column lists the number of chiral outliers, the number of chiral centers analysed, the number of these observed in the model and the number defined in the chemical component dictionary. Similar counts are reported in the Torsion and Rings columns. '-' means no outliers of that kind were identified.

Mol	Type	Chain	Res	Link	Chirals	Torsions	Rings
3	233	D	2201[A]	4	-	2/17/37/37	0/1/1/1
3	233	D	2201[B]	4	-	2/17/37/37	0/1/1/1
4	SQ	D	2202[B]	3	2/2/4/6	0/1/21/21	0/1/1/1
3	233	D	2203[A]	4	-	0/17/37/37	0/1/1/1
3	233	D	2203[B]	4	-	2/17/37/37	0/1/1/1
3	233	E	1204	4	-	0/17/37/37	0/1/1/1

Continued on next page...

Continued from previous page...

Mol	Type	Chain	Res	Link	Chirals	Torsions	Rings
4	SQ	E	1205	3	2/2/4/6	0/1/21/21	0/1/1/1
3	233	E	1206	4	-	0/17/37/37	0/1/1/1
3	233	F	1207	-	-	2/17/37/37	0/1/1/1
2	CYN	F	1208	-	-	0/0/0/0	0/0/0/0

All (37) bond length outliers are listed below:

Mol	Chain	Res	Type	Atoms	Z	Observed(Å)	Ideal(Å)
4	D	2202[B]	SQ	C4-C1	-8.84	1.39	1.57
4	E	1205	SQ	C4-C1	-8.41	1.40	1.57
4	D	2202[B]	SQ	C1-N1	-6.72	1.30	1.46
4	E	1205	SQ	C1-N1	-6.61	1.30	1.46
4	E	1205	SQ	C4-N2	-5.85	1.33	1.47
4	D	2202[B]	SQ	C4-N2	-5.32	1.34	1.47
3	E	1204	233	O16-C17	-2.63	1.38	1.45
4	D	2202[B]	SQ	C5-N2	-2.28	1.40	1.46
3	E	1204	233	C14-N13	-2.05	1.29	1.34
3	D	2203[B]	233	C14-N13	-2.03	1.29	1.34
3	D	2203[B]	233	C2-C1	2.30	1.55	1.53
3	D	2203[A]	233	C2-C1	2.32	1.55	1.53
3	F	1207	233	O5-C1	2.50	1.47	1.43
3	E	1204	233	C1-N1	2.59	1.46	1.43
3	E	1204	233	O5-C1	2.71	1.47	1.43
3	D	2203[B]	233	C1-N1	3.28	1.46	1.43
3	E	1206	233	O16-C14	3.40	1.39	1.34
3	D	2203[A]	233	C1-N1	3.53	1.47	1.43
3	E	1206	233	C1-N1	3.65	1.47	1.43
3	D	2201[A]	233	C1-N1	3.85	1.47	1.43
3	E	1206	233	C2-C1	3.90	1.57	1.53
3	F	1207	233	C1-N1	4.31	1.48	1.43
3	E	1204	233	C2-C1	4.31	1.57	1.53
3	F	1207	233	C2-C1	5.06	1.58	1.53
3	D	2201[A]	233	O16-C14	5.54	1.42	1.34
3	E	1204	233	O16-C14	5.83	1.42	1.34
3	F	1207	233	O16-C14	6.34	1.43	1.34
3	D	2203[A]	233	O16-C14	7.19	1.44	1.34
3	D	2201[B]	233	O16-C14	7.72	1.45	1.34
3	D	2203[B]	233	O16-C14	8.49	1.46	1.34
3	E	1206	233	O15-C14	10.33	1.41	1.21
3	E	1204	233	O15-C14	11.41	1.43	1.21
3	D	2203[B]	233	O15-C14	11.87	1.44	1.21
3	D	2203[A]	233	O15-C14	11.92	1.44	1.21

Continued on next page...

Continued from previous page...

Mol	Chain	Res	Type	Atoms	Z	Observed(Å)	Ideal(Å)
3	D	2201[A]	233	O15-C14	11.97	1.44	1.21
3	D	2201[B]	233	O15-C14	12.78	1.46	1.21
3	F	1207	233	O15-C14	13.02	1.47	1.21

All (66) bond angle outliers are listed below:

Mol	Chain	Res	Type	Atoms	Z	Observed(°)	Ideal(°)
3	F	1207	233	O15-C14-N13	-10.13	109.33	124.97
3	F	1207	233	C12-N13-C14	-8.34	109.20	121.88
3	D	2201[B]	233	O15-C14-N13	-6.70	114.63	124.97
3	D	2201[A]	233	O16-C14-O15	-5.83	117.11	124.70
3	D	2203[A]	233	O15-C14-N13	-5.71	116.16	124.97
3	D	2203[A]	233	C1-N1-C7	-5.33	113.61	122.18
3	D	2201[A]	233	O15-C14-N13	-4.99	117.26	124.97
3	E	1206	233	O16-C14-O15	-4.39	118.98	124.70
3	E	1206	233	C10-C9-C8	-4.21	97.85	113.29
3	D	2201[A]	233	O5-C1-N1	-3.97	101.37	108.03
3	E	1204	233	O5-C1-C2	-3.91	105.25	109.91
3	E	1206	233	O5-C1-C2	-3.86	105.32	109.91
3	F	1207	233	C2-C1-N1	-3.71	107.28	111.44
3	D	2203[B]	233	O5-C1-C2	-3.66	105.55	109.91
3	D	2201[B]	233	O16-C14-O15	-3.57	120.05	124.70
3	E	1206	233	C2-C1-N1	-3.45	107.57	111.44
3	F	1207	233	O5-C1-C2	-3.45	105.81	109.91
3	F	1207	233	C1-N1-C7	-3.27	116.93	122.18
3	D	2203[A]	233	O5-C1-C2	-3.02	106.31	109.91
3	E	1206	233	C5-O5-C1	-2.98	108.15	112.49
3	D	2203[B]	233	O15-C14-N13	-2.79	120.65	124.97
3	E	1204	233	O2-C2-C1	-2.78	104.06	109.27
3	D	2201[B]	233	C2-C1-N1	-2.65	108.47	111.44
3	F	1207	233	O3-C3-C4	-2.64	104.39	110.34
4	D	2202[B]	SQ	O1-C2-C1	-2.64	130.80	134.62
3	E	1206	233	O3-C3-C4	-2.61	104.46	110.34
3	E	1204	233	O16-C14-O15	-2.60	121.31	124.70
3	E	1206	233	C1-N1-C7	-2.57	118.04	122.18
3	E	1204	233	O3-C3-C4	-2.45	104.81	110.34
3	E	1204	233	C2-C1-N1	-2.34	108.82	111.44
3	E	1206	233	C8-C7-N1	-2.33	112.03	115.83
3	D	2203[A]	233	C11-C12-N13	-2.25	105.61	112.19
3	F	1207	233	O16-C14-O15	-2.22	121.81	124.70
3	F	1207	233	C11-C10-C9	-2.20	103.17	114.53
3	E	1204	233	O2-C2-C3	-2.18	105.44	110.34

Continued on next page...

Continued from previous page...

Mol	Chain	Res	Type	Atoms	Z	Observed(°)	Ideal(°)
3	E	1206	233	C12-N13-C14	-2.14	118.62	121.88
3	D	2203[B]	233	O7-C7-C8	-2.14	118.28	121.98
3	F	1207	233	O2-C2-C1	-2.13	105.28	109.27
3	F	1207	233	C10-C11-C12	-2.11	103.58	113.69
3	F	1207	233	O7-C7-N1	-2.11	119.43	123.01
3	E	1206	233	O5-C1-N1	-2.09	104.52	108.03
3	E	1206	233	C3-C2-C1	-2.00	106.88	110.09
3	E	1206	233	O7-C7-C8	2.24	125.85	121.98
3	E	1206	233	C11-C12-N13	2.37	119.13	112.19
3	D	2203[B]	233	O7-C7-N1	2.42	127.12	123.01
3	E	1206	233	O16-C14-N13	2.78	113.48	110.03
3	D	2201[B]	233	C17-O16-C14	3.25	119.66	115.63
4	E	1205	SQ	O1-C2-C1	3.60	139.82	134.62
3	D	2201[B]	233	O5-C1-N1	4.23	115.12	108.03
3	D	2203[B]	233	C17-O16-C14	4.60	121.33	115.63
3	D	2203[B]	233	O16-C14-N13	4.67	115.83	110.03
3	D	2201[B]	233	C12-N13-C14	4.86	129.28	121.88
4	E	1205	SQ	C3-C4-N2	5.05	130.07	115.39
4	D	2202[B]	SQ	C2-C1-N1	5.66	131.85	115.39
4	D	2202[B]	SQ	C3-C4-N2	5.66	131.87	115.39
3	D	2203[A]	233	O16-C14-N13	6.34	117.90	110.03
4	D	2202[B]	SQ	C5-N2-C4	7.00	135.22	113.65
3	D	2201[A]	233	C17-O16-C14	7.26	124.62	115.63
3	E	1204	233	C17-O16-C14	10.34	128.42	115.63
3	D	2201[A]	233	C12-N13-C14	10.63	138.05	121.88
4	E	1205	SQ	C2-C1-N1	10.72	146.57	115.39
3	D	2201[B]	233	O16-C14-N13	12.28	125.25	110.03
3	D	2201[A]	233	O16-C14-N13	12.52	125.56	110.03
3	F	1207	233	O16-C14-N13	15.15	128.81	110.03
3	E	1204	233	C12-N13-C14	18.00	149.26	121.88
3	D	2203[B]	233	C12-N13-C14	25.30	160.37	121.88

All (4) chirality outliers are listed below:

Mol	Chain	Res	Type	Atom
4	D	2202[B]	SQ	C4
4	D	2202[B]	SQ	C1
4	E	1205	SQ	C4
4	E	1205	SQ	C1

All (8) torsion outliers are listed below:

Mol	Chain	Res	Type	Atoms
3	D	2203[B]	233	C17-O16-C14-N13
3	D	2203[B]	233	C17-O16-C14-O15
3	D	2201[A]	233	C17-O16-C14-N13
3	F	1207	233	C17-O16-C14-O15
3	D	2201[A]	233	C17-O16-C14-O15
3	D	2201[B]	233	C17-O16-C14-N13
3	F	1207	233	C17-O16-C14-N13
3	D	2201[B]	233	C17-O16-C14-O15

There are no ring outliers.

4 monomers are involved in 5 short contacts:

Mol	Chain	Res	Type	Clashes	Symm-Clashes
3	D	2201[A]	233	2	0
3	D	2201[B]	233	2	0
3	D	2203[A]	233	2	0
3	F	1207	233	1	0

5.7 Other polymers [i](#)

There are no such residues in this entry.

5.8 Polymer linkage issues [i](#)

There are no chain breaks in this entry.

6 Fit of model and data

6.1 Protein, DNA and RNA chains

In the following table, the column labelled ‘#RSRZ> 2’ contains the number (and percentage) of RSRZ outliers, followed by percent RSRZ outliers for the chain as percentile scores relative to all X-ray entries and entries of similar resolution. The OWAB column contains the minimum, median, 95th percentile and maximum values of the occupancy-weighted average B-factor per residue. The column labelled ‘Q< 0.9’ lists the number of (and percentage) of residues with an average occupancy less than 0.9.

Mol	Chain	Analysed	<RSRZ>	#RSRZ>2	OWAB(Å ²)	Q<0.9
1	D	102/103 (99%)	-0.06	3 (2%) 55 56	10, 14, 24, 34	1 (0%)
1	E	102/103 (99%)	0.01	3 (2%) 55 56	10, 16, 25, 36	0
1	F	102/103 (99%)	0.09	5 (4%) 33 33	11, 18, 27, 36	0
1	G	102/103 (99%)	-0.11	2 (1%) 68 69	9, 14, 23, 38	0
1	H	102/103 (99%)	-0.16	2 (1%) 68 69	9, 14, 23, 38	0
All	All	510/515 (99%)	-0.05	15 (2%) 55 56	9, 15, 25, 38	1 (0%)

All (15) RSRZ outliers are listed below:

Mol	Chain	Res	Type	RSRZ
1	G	103	ASN	6.2
1	D	1	THR	5.2
1	H	103	ASN	5.0
1	E	103	ASN	4.6
1	D	103	ASN	4.6
1	F	103	ASN	3.1
1	G	1	THR	2.9
1	F	13	HIS	2.6
1	E	1	THR	2.6
1	E	55	SER	2.4
1	F	1	THR	2.2
1	D	13	HIS	2.2
1	F	55	SER	2.2
1	F	92	THR	2.1
1	H	1	THR	2.1

6.2 Non-standard residues in protein, DNA, RNA chains [i](#)

In the following table, the Atoms column lists the number of modelled atoms in the group and the number defined in the chemical component dictionary. LLDF column lists the quality of electron density of the group with respect to its neighbouring residues in protein, DNA or RNA chains. The B-factors column lists the minimum, median, 95th percentile and maximum values of B factors of atoms in the group. The column labelled 'Q< 0.9' lists the number of atoms with occupancy less than 0.9.

Mol	Type	Chain	Res	Atoms	RSCC	RSR	LLDF	B-factors(Å ²)	Q<0.9
1	CSS	H	9[A]	6/8	0.97	0.07	-	14,15,16,17	1
1	CSS	D	9[B]	7/8	0.96	0.09	-	15,16,17,18	2
1	CSS	D	9[A]	6/8	0.96	0.09	-	14,16,17,18	1
1	CSS	F	9[A]	6/8	0.95	0.09	-	18,20,20,21	1
1	CSS	E	9[B]	7/8	0.96	0.09	-	16,18,20,22	2
1	CSS	F	9[B]	7/8	0.95	0.09	-	18,20,21,21	2
1	CSS	E	9[A]	6/8	0.96	0.09	-	17,18,19,20	1
1	CSS	G	9[A]	6/8	0.94	0.09	-	14,15,15,16	1
1	CSS	G	9[B]	7/8	0.94	0.09	-	9,15,16,19	2
1	CSS	H	9[B]	7/8	0.97	0.07	-	13,15,17,23	2

6.3 Carbohydrates [i](#)

There are no carbohydrates in this entry.

6.4 Ligands [i](#)

In the following table, the Atoms column lists the number of modelled atoms in the group and the number defined in the chemical component dictionary. LLDF column lists the quality of electron density of the group with respect to its neighbouring residues in protein, DNA or RNA chains. The B-factors column lists the minimum, median, 95th percentile and maximum values of B factors of atoms in the group. The column labelled 'Q< 0.9' lists the number of atoms with occupancy less than 0.9.

Mol	Type	Chain	Res	Atoms	RSCC	RSR	LLDF	B-factors(Å ²)	Q<0.9
3	233	D	2203[A]	24/24	0.96	0.13	4.72	11,15,34,35	24
3	233	F	1207	24/24	0.80	0.24	4.00	22,29,49,49	0
4	SQ	E	1205	11/11	0.68	0.26	3.96	36,40,40,41	0
3	233	D	2201[A]	24/24	0.93	0.17	3.92	16,22,35,36	24
3	233	D	2203[B]	24/24	0.96	0.13	3.25	13,17,35,35	24
3	233	D	2201[B]	24/24	0.93	0.17	1.93	18,24,38,38	24
3	233	E	1206	24/24	0.95	0.10	1.71	11,15,30,34	0
3	233	E	1204	24/24	0.93	0.12	1.35	18,23,39,41	0

Continued on next page...

Continued from previous page...

Mol	Type	Chain	Res	Atoms	RSCC	RSR	LLDF	B-factors(\AA^2)	Q<0.9
2	CYN	F	1208	2/2	0.40	0.51	-	48,48,48,48	2
4	SQ	D	2202[A]	1/11	0.24	0.58	-	36,36,36,36	1
4	SQ	D	2202[B]	11/11	0.24	0.58	-	33,34,35,36	11

6.5 Other polymers [i](#)

There are no such residues in this entry.