



# Full wwPDB X-ray Structure Validation Report ⓘ

Feb 1, 2016 – 06:43 PM GMT

PDB ID : 4MJL  
Title : Crystal Structure of myo-inositol dehydrogenase from *Lactobacillus casei* in complex with NAD and D-chiro-inositol  
Authors : Bertwistle, D.; Sanders, D.A.R.; Palmer, D.R.J.  
Deposited on : 2013-09-03  
Resolution : 1.60 Å(reported)

This is a Full wwPDB X-ray Structure Validation Report for a publicly released PDB entry.  
We welcome your comments at [validation@mail.wwpdb.org](mailto:validation@mail.wwpdb.org)  
A user guide is available at  
<http://wwpdb.org/validation/2016/XrayValidationReportHelp>  
with specific help available everywhere you see the ⓘ symbol.

---

The following versions of software and data (see [references ⓘ](#)) were used in the production of this report:

MolProbity : 4.02b-467  
Mogul : 1.7 (RC4), CSD as536be (2015)  
Xtriage (Phenix) : 1.9-1692  
EDS : rb-20026688  
Percentile statistics : 20151230.v01 (using entries in the PDB archive December 30th 2015)  
Refmac : 5.8.0135  
CCP4 : 6.5.0  
Ideal geometry (proteins) : Engh & Huber (2001)  
Ideal geometry (DNA, RNA) : Parkinson et al. (1996)  
Validation Pipeline (wwPDB-VP) : trunk26865

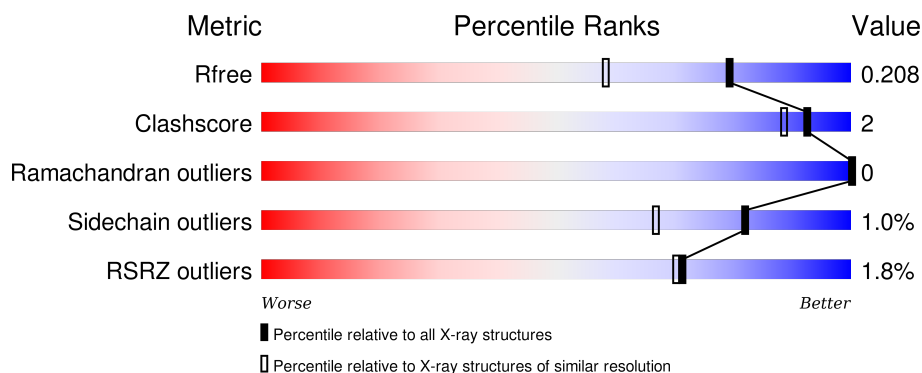
# 1 Overall quality at a glance ⓘ

The following experimental techniques were used to determine the structure:

## *X-RAY DIFFRACTION*

The reported resolution of this entry is 1.60 Å.

Percentile scores (ranging between 0-100) for global validation metrics of the entry are shown in the following graphic. The table shows the number of entries on which the scores are based.



Metric	Whole archive (#Entries)	Similar resolution (#Entries, resolution range(Å))
$R_{free}$	91344	2475 (1.60-1.60)
Clashscore	102246	2732 (1.60-1.60)
Ramachandran outliers	100387	2654 (1.60-1.60)
Sidechain outliers	100360	2653 (1.60-1.60)
RSRZ outliers	91569	2479 (1.60-1.60)

The table below summarises the geometric issues observed across the polymeric chains and their fit to the electron density. The red, orange, yellow and green segments on the lower bar indicate the fraction of residues that contain outliers for  $\geq 3$ , 2, 1 and 0 types of geometric quality criteria. A grey segment represents the fraction of residues that are not modelled. The numeric value for each fraction is indicated below the corresponding segment, with a dot representing fractions  $\leq 5\%$ . The upper red bar (where present) indicates the fraction of residues that have poor fit to the electron density. The numeric value is given above the bar.

Mol	Chain	Length	Quality of chain
1	A	351	<div> <div>4%</div> <div>89%</div> <div>7%</div> <div>.</div> </div>
1	B	351	<div> <div>2%</div> <div>89%</div> <div>7%</div> <div>.</div> </div>
1	C	351	<div> <div>92%</div> <div>.</div> <div>.</div> <div>.</div> </div>
1	D	351	<div> <div>%</div> <div>91%</div> <div>5%</div> <div>.</div> </div>

The following table lists non-polymeric compounds, carbohydrate monomers and non-standard

residues in protein, DNA, RNA chains that are outliers for geometric or electron-density-fit criteria:

Mol	Type	Chain	Res	Chirality	Geometry	Clashes	Electron density
3	GOL	B	402	-	-	-	X
3	GOL	C	402	-	-	-	X
3	GOL	C	403	-	-	-	X
3	GOL	C	404	-	-	-	X
3	GOL	D	403	-	-	-	X
3	GOL	D	404	-	-	-	X
5	CBU	D	402	-	-	-	X

## 2 Entry composition

There are 6 unique types of molecules in this entry. The entry contains 11985 atoms, of which 0 are hydrogens and 0 are deuteriums.

In the tables below, the ZeroOcc column contains the number of atoms modelled with zero occupancy, the AltConf column contains the number of residues with at least one atom in alternate conformation and the Trace column contains the number of residues modelled with at most 2 atoms.

- Molecule 1 is a protein called Inositol 2-dehydrogenase/D-chiro-inositol 3-dehydrogenase.

Mol	Chain	Residues	Atoms					ZeroOcc	AltConf	Trace
1	A	339	Total	C	N	O	S	1	0	0
			2622	1657	446	513	6			
1	B	339	Total	C	N	O	S	0	1	0
			2630	1662	449	513	6			
1	C	339	Total	C	N	O	S	0	1	0
			2627	1660	447	514	6			
1	D	339	Total	C	N	O	S	0	6	0
			2663	1682	457	518	6			

There are 52 discrepancies between the modelled and reference sequences:

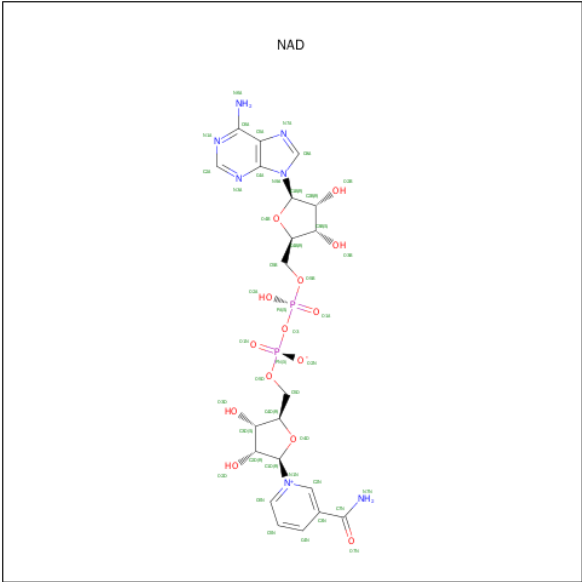
Chain	Residue	Modelled	Actual	Comment	Reference
A	-11	MET	-	EXPRESSION TAG	UNP B3W8L3
A	-10	ARG	-	EXPRESSION TAG	UNP B3W8L3
A	-9	GLY	-	EXPRESSION TAG	UNP B3W8L3
A	-8	SER	-	EXPRESSION TAG	UNP B3W8L3
A	-7	HIS	-	EXPRESSION TAG	UNP B3W8L3
A	-6	HIS	-	EXPRESSION TAG	UNP B3W8L3
A	-5	HIS	-	EXPRESSION TAG	UNP B3W8L3
A	-4	HIS	-	EXPRESSION TAG	UNP B3W8L3
A	-3	HIS	-	EXPRESSION TAG	UNP B3W8L3
A	-2	HIS	-	EXPRESSION TAG	UNP B3W8L3
A	-1	GLY	-	EXPRESSION TAG	UNP B3W8L3
A	0	SER	-	EXPRESSION TAG	UNP B3W8L3
A	292	GLU	GLN	CONFLICT	UNP B3W8L3
B	-11	MET	-	EXPRESSION TAG	UNP B3W8L3
B	-10	ARG	-	EXPRESSION TAG	UNP B3W8L3
B	-9	GLY	-	EXPRESSION TAG	UNP B3W8L3
B	-8	SER	-	EXPRESSION TAG	UNP B3W8L3
B	-7	HIS	-	EXPRESSION TAG	UNP B3W8L3
B	-6	HIS	-	EXPRESSION TAG	UNP B3W8L3
B	-5	HIS	-	EXPRESSION TAG	UNP B3W8L3
B	-4	HIS	-	EXPRESSION TAG	UNP B3W8L3

*Continued on next page...*

*Continued from previous page...*

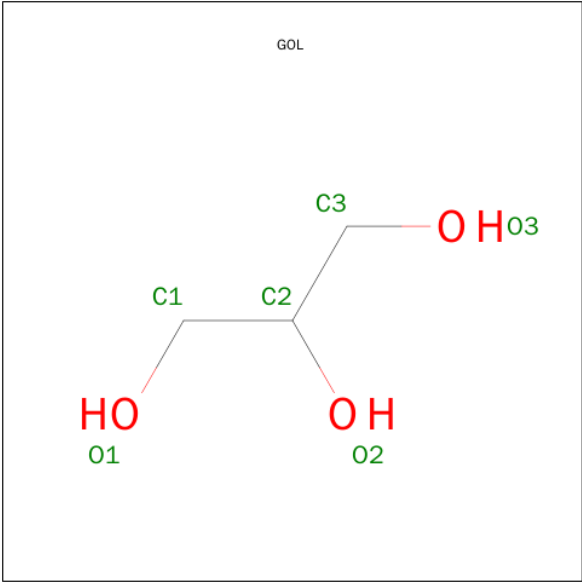
Chain	Residue	Modelled	Actual	Comment	Reference
B	-3	HIS	-	EXPRESSION TAG	UNP B3W8L3
B	-2	HIS	-	EXPRESSION TAG	UNP B3W8L3
B	-1	GLY	-	EXPRESSION TAG	UNP B3W8L3
B	0	SER	-	EXPRESSION TAG	UNP B3W8L3
B	292	GLU	GLN	CONFLICT	UNP B3W8L3
C	-11	MET	-	EXPRESSION TAG	UNP B3W8L3
C	-10	ARG	-	EXPRESSION TAG	UNP B3W8L3
C	-9	GLY	-	EXPRESSION TAG	UNP B3W8L3
C	-8	SER	-	EXPRESSION TAG	UNP B3W8L3
C	-7	HIS	-	EXPRESSION TAG	UNP B3W8L3
C	-6	HIS	-	EXPRESSION TAG	UNP B3W8L3
C	-5	HIS	-	EXPRESSION TAG	UNP B3W8L3
C	-4	HIS	-	EXPRESSION TAG	UNP B3W8L3
C	-3	HIS	-	EXPRESSION TAG	UNP B3W8L3
C	-2	HIS	-	EXPRESSION TAG	UNP B3W8L3
C	-1	GLY	-	EXPRESSION TAG	UNP B3W8L3
C	0	SER	-	EXPRESSION TAG	UNP B3W8L3
C	292	GLU	GLN	CONFLICT	UNP B3W8L3
D	-11	MET	-	EXPRESSION TAG	UNP B3W8L3
D	-10	ARG	-	EXPRESSION TAG	UNP B3W8L3
D	-9	GLY	-	EXPRESSION TAG	UNP B3W8L3
D	-8	SER	-	EXPRESSION TAG	UNP B3W8L3
D	-7	HIS	-	EXPRESSION TAG	UNP B3W8L3
D	-6	HIS	-	EXPRESSION TAG	UNP B3W8L3
D	-5	HIS	-	EXPRESSION TAG	UNP B3W8L3
D	-4	HIS	-	EXPRESSION TAG	UNP B3W8L3
D	-3	HIS	-	EXPRESSION TAG	UNP B3W8L3
D	-2	HIS	-	EXPRESSION TAG	UNP B3W8L3
D	-1	GLY	-	EXPRESSION TAG	UNP B3W8L3
D	0	SER	-	EXPRESSION TAG	UNP B3W8L3
D	292	GLU	GLN	CONFLICT	UNP B3W8L3

- Molecule 2 is NICOTINAMIDE-ADENINE-DINUCLEOTIDE (three-letter code: NAD) (formula: C<sub>21</sub>H<sub>27</sub>N<sub>7</sub>O<sub>14</sub>P<sub>2</sub>).



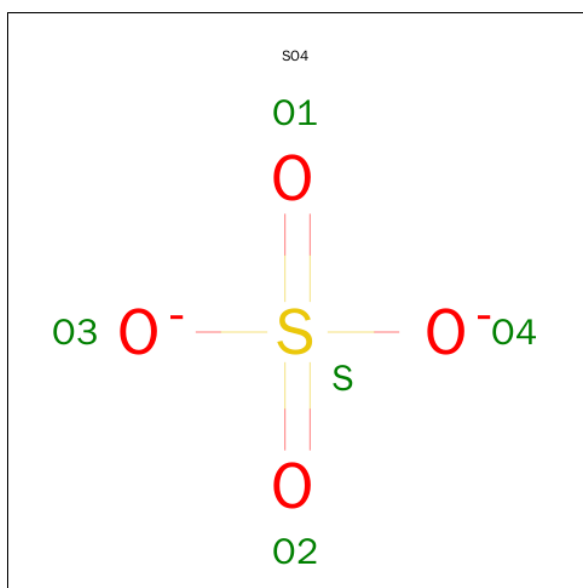
Mol	Chain	Residues	Atoms					ZeroOcc	AltConf
2	A	1	Total	C	N	O	P	0	0
			44	21	7	14	2		
2	B	1	Total	C	N	O	P	0	0
			44	21	7	14	2		
2	C	1	Total	C	N	O	P	0	0
			44	21	7	14	2		
2	D	1	Total	C	N	O	P	0	0
			44	21	7	14	2		

- Molecule 3 is GLYCEROL (three-letter code: GOL) (formula: C<sub>3</sub>H<sub>8</sub>O<sub>3</sub>).



Mol	Chain	Residues	Atoms	ZeroOcc	AltConf
3	A	1	Total C O 6 3 3	0	0
3	A	1	Total C O 6 3 3	0	0
3	B	1	Total C O 6 3 3	0	0
3	C	1	Total C O 6 3 3	0	0
3	C	1	Total C O 6 3 3	0	0
3	C	1	Total C O 6 3 3	0	0
3	D	1	Total C O 6 3 3	0	0
3	D	1	Total C O 6 3 3	0	0

- Molecule 4 is SULFATE ION (three-letter code: SO4) (formula: O<sub>4</sub>S).



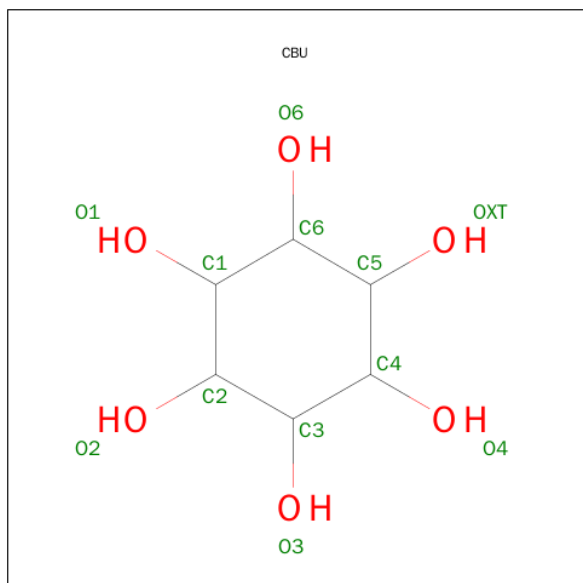
Mol	Chain	Residues	Atoms	ZeroOcc	AltConf
4	A	1	Total O S 5 4 1	0	0
4	A	1	Total O S 5 4 1	0	0
4	B	1	Total O S 5 4 1	0	0
4	B	1	Total O S 5 4 1	0	0

*Continued on next page...*

Continued from previous page...

Mol	Chain	Residues	Atoms			ZeroOcc	AltConf
4	C	1	Total	O	S	0	0
			5	4	1		
4	D	1	Total	O	S	0	0
			5	4	1		

- Molecule 5 is (1R,2R,3S,4S,5S,6S)-CYCLOHEXANE-1,2,3,4,5,6-HEXOL (three-letter code: CBU) (formula:  $C_6H_{12}O_6$ ).



Mol	Chain	Residues	Atoms			ZeroOcc	AltConf
5	D	1	Total	C	O	0	0
			12	6	6		

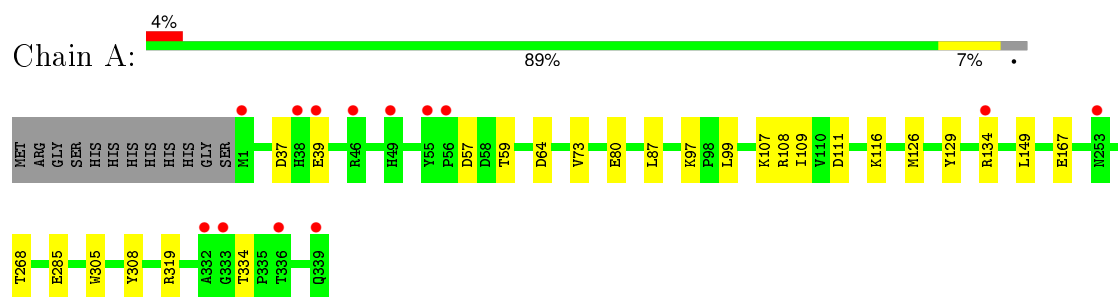
- Molecule 6 is water.

Mol	Chain	Residues	Atoms		ZeroOcc	AltConf
6	A	231	Total	O	0	0
			231	231		
6	B	291	Total	O	0	0
			291	291		
6	C	319	Total	O	0	0
			319	319		
6	D	336	Total	O	0	0
			336	336		

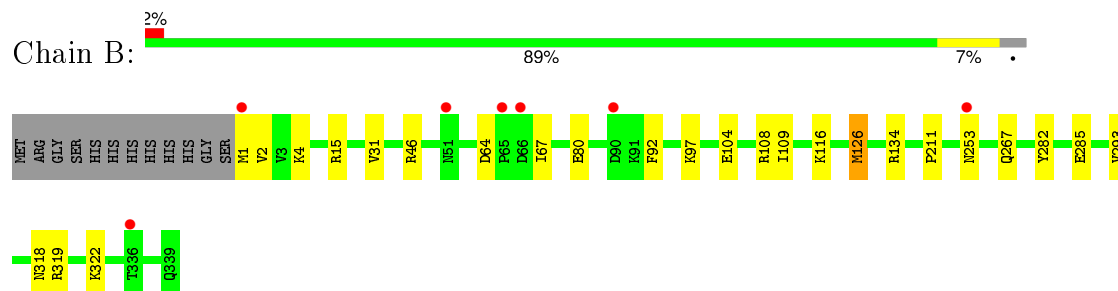
### 3 Residue-property plots [i](#)

These plots are drawn for all protein, RNA and DNA chains in the entry. The first graphic for a chain summarises the proportions of errors displayed in the second graphic. The second graphic shows the sequence view annotated by issues in geometry and electron density. Residues are color-coded according to the number of geometric quality criteria for which they contain at least one outlier: green = 0, yellow = 1, orange = 2 and red = 3 or more. A red dot above a residue indicates a poor fit to the electron density ( $RSRZ > 2$ ). Stretches of 2 or more consecutive residues without any outlier are shown as a green connector. Residues present in the sample, but not in the model, are shown in grey.

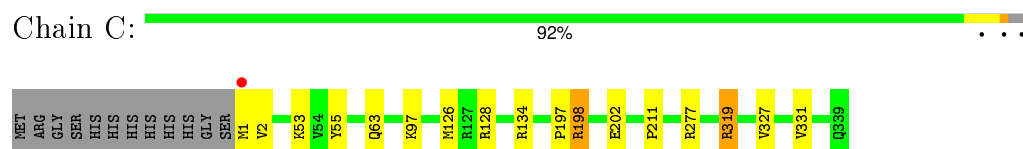
- Molecule 1: Inositol 2-dehydrogenase/D-chiro-inositol 3-dehydrogenase



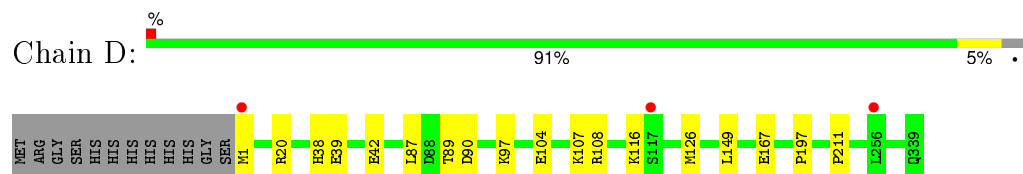
- Molecule 1: Inositol 2-dehydrogenase/D-chiro-inositol 3-dehydrogenase



- Molecule 1: Inositol 2-dehydrogenase/D-chiro-inositol 3-dehydrogenase



- Molecule 1: Inositol 2-dehydrogenase/D-chiro-inositol 3-dehydrogenase



## 4 Data and refinement statistics

Property	Value	Source
Space group	P 21 21 21	Depositor
Cell constants a, b, c, $\alpha$ , $\beta$ , $\gamma$	106.76Å 110.58Å 127.19Å 90.00° 90.00° 90.00°	Depositor
Resolution (Å)	48.07 – 1.60 48.07 – 1.60	Depositor EDS
% Data completeness (in resolution range)	100.0 (48.07-1.60) 100.0 (48.07-1.60)	Depositor EDS
$R_{merge}$	(Not available)	Depositor
$R_{sym}$	0.07	Depositor
$\langle I/\sigma(I) \rangle$ <sup>1</sup>	2.93 (at 1.60Å)	Xtriage
Refinement program	PHENIX (phenix.refine: 1.8_1069)	Depositor
R, $R_{free}$	0.171 , 0.206 0.172 , 0.208	Depositor DCC
$R_{free}$ test set	9958 reflections (5.30%)	DCC
Wilson B-factor (Å <sup>2</sup> )	17.9	Xtriage
Anisotropy	0.203	Xtriage
Bulk solvent $k_{sol}$ (e/Å <sup>3</sup> ), $B_{sol}$ (Å <sup>2</sup> )	0.36 , 46.9	EDS
Estimated twinning fraction	0.011 for k,h,l	Xtriage
L-test for twinning <sup>2</sup>	$\langle  L  \rangle = 0.50$ , $\langle L^2 \rangle = 0.33$	Xtriage
Outliers	0 of 197902 reflections	Xtriage
$F_o, F_c$ correlation	0.97	EDS
Total number of atoms	11985	wwPDB-VP
Average B, all atoms (Å <sup>2</sup> )	21.0	wwPDB-VP

Xtriage's analysis on translational NCS is as follows: *The largest off-origin peak in the Patterson function is 2.79% of the height of the origin peak. No significant pseudotranslation is detected.*

<sup>1</sup>Intensities estimated from amplitudes.

<sup>2</sup>Theoretical values of  $\langle |L| \rangle$ ,  $\langle L^2 \rangle$  for acentric reflections are 0.5, 0.375 respectively for untwinned datasets, and 0.333, 0.2 for perfectly twinned datasets.

## 5 Model quality [i](#)

### 5.1 Standard geometry [i](#)

Bond lengths and bond angles in the following residue types are not validated in this section: GOL, SO4, NAD, CBU

The Z score for a bond length (or angle) is the number of standard deviations the observed value is removed from the expected value. A bond length (or angle) with  $|Z| > 5$  is considered an outlier worth inspection. RMSZ is the root-mean-square of all Z scores of the bond lengths (or angles).

Mol	Chain	Bond lengths		Bond angles	
		RMSZ	# Z  >5	RMSZ	# Z  >5
1	A	0.94	2/2669 (0.1%)	0.89	4/3634 (0.1%)
1	B	0.92	2/2680 (0.1%)	0.87	7/3648 (0.2%)
1	C	0.92	2/2677 (0.1%)	0.81	3/3645 (0.1%)
1	D	0.84	1/2726 (0.0%)	0.81	3/3710 (0.1%)
All	All	0.90	7/10752 (0.1%)	0.85	17/14637 (0.1%)

All (7) bond length outliers are listed below:

Mol	Chain	Res	Type	Atoms	Z	Observed(Å)	Ideal(Å)
1	C	198	ARG	CB-CG	-5.91	1.36	1.52
1	B	318	ASN	C-N	-5.66	1.21	1.34
1	C	202	GLU	CD-OE2	-5.62	1.19	1.25
1	A	167	GLU	CG-CD	5.41	1.60	1.51
1	D	167	GLU	CG-CD	5.29	1.59	1.51
1	A	39	GLU	CB-CG	5.21	1.62	1.52
1	B	285	GLU	CB-CG	-5.14	1.42	1.52

All (17) bond angle outliers are listed below:

Mol	Chain	Res	Type	Atoms	Z	Observed(°)	Ideal(°)
1	B	319	ARG	NE-CZ-NH2	-6.35	117.12	120.30
1	B	15	ARG	NE-CZ-NH1	5.97	123.28	120.30
1	B	46[A]	ARG	NE-CZ-NH1	-5.93	117.34	120.30
1	B	46[B]	ARG	NE-CZ-NH1	-5.93	117.34	120.30
1	A	319	ARG	NE-CZ-NH1	-5.90	117.35	120.30
1	D	108[A]	ARG	NE-CZ-NH1	-5.87	117.36	120.30
1	D	108[B]	ARG	NE-CZ-NH1	-5.87	117.36	120.30
1	B	319	ARG	NE-CZ-NH1	5.83	123.22	120.30
1	A	134	ARG	NE-CZ-NH2	-5.68	117.46	120.30
1	C	277	ARG	NE-CZ-NH1	-5.62	117.49	120.30

*Continued on next page...*

*Continued from previous page...*

Mol	Chain	Res	Type	Atoms	Z	Observed(°)	Ideal(°)
1	C	134	ARG	NE-CZ-NH1	5.53	123.06	120.30
1	C	128	ARG	NE-CZ-NH1	-5.35	117.62	120.30
1	D	20	ARG	NE-CZ-NH1	5.26	122.93	120.30
1	B	46[A]	ARG	NE-CZ-NH2	5.19	122.89	120.30
1	B	46[B]	ARG	NE-CZ-NH2	5.19	122.89	120.30
1	A	108	ARG	NE-CZ-NH2	-5.09	117.75	120.30
1	A	99	LEU	CB-CG-CD2	-5.06	102.40	111.00

There are no chirality outliers.

There are no planarity outliers.

## 5.2 Too-close contacts ⓘ

In the following table, the Non-H and H(model) columns list the number of non-hydrogen atoms and hydrogen atoms in the chain respectively. The H(added) column lists the number of hydrogen atoms added and optimized by MolProbity. The Clashes column lists the number of clashes within the asymmetric unit, whereas Symm-Clashes lists symmetry related clashes.

Mol	Chain	Non-H	H(model)	H(added)	Clashes	Symm-Clashes
1	A	2622	0	2614	11	0
1	B	2630	0	2627	13	0
1	C	2627	0	2620	8	0
1	D	2663	0	2662	11	0
2	A	44	0	26	0	0
2	B	44	0	26	0	0
2	C	44	0	26	0	0
2	D	44	0	26	2	0
3	A	12	0	16	2	0
3	B	6	0	8	0	0
3	C	18	0	24	0	0
3	D	12	0	16	2	0
4	A	10	0	0	0	0
4	B	10	0	0	0	0
4	C	5	0	0	1	0
4	D	5	0	0	0	0
5	D	12	0	11	2	0
6	A	231	0	0	0	0
6	B	291	0	0	4	0
6	C	319	0	0	1	0
6	D	336	0	0	4	0
All	All	11985	0	10702	43	0

The all-atom clashscore is defined as the number of clashes found per 1000 atoms (including hydrogen atoms). The all-atom clashscore for this structure is 2.

All (43) close contacts within the same asymmetric unit are listed below, sorted by their clash magnitude.

Atom-1	Atom-2	Interatomic distance (Å)	Clash overlap (Å)
1:B:253:ASN:HB3	6:B:790:HOH:O	1.68	0.93
1:A:268:THR:HG23	3:A:402:GOL:H32	1.52	0.90
1:B:322:LYS:HE2	6:B:590:HOH:O	1.79	0.82
1:D:104:GLU:HG2	6:D:573:HOH:O	1.82	0.79
1:B:134:ARG:NH1	6:B:692:HOH:O	2.32	0.63
1:C:53:LYS:HD2	1:C:55:TYR:CZ	2.34	0.61
2:D:401:NAD:C3N	5:D:402:CBU:H4	2.34	0.58
1:B:64:ASP:HB3	1:B:67:ILE:HD12	1.88	0.56
1:C:331:VAL:HG23	6:C:696:HOH:O	2.06	0.54
1:C:319:ARG:HG2	1:C:327:VAL:HG21	1.89	0.54
1:D:38[B]:HIS:CE1	6:D:819:HOH:O	2.61	0.53
1:A:80:GLU:HA	1:A:109:ILE:HD11	1.90	0.53
1:B:4:LYS:HD2	1:B:31:VAL:HG11	1.90	0.51
2:D:401:NAD:C4N	5:D:402:CBU:H4	2.42	0.50
1:A:305:TRP:CD1	1:A:334:THR:HG23	2.47	0.49
1:A:57:ASP:OD2	1:A:59:THR:HB	2.13	0.49
1:B:80:GLU:HA	1:B:109:ILE:HD11	1.95	0.49
1:D:38[A]:HIS:CE1	1:D:42:GLU:OE2	2.66	0.48
1:A:87:LEU:O	1:A:116:LYS:NZ	2.27	0.48
1:A:107:LYS:HD3	1:A:308:TYR:CZ	2.49	0.48
1:C:63:GLN:OE1	1:C:63:GLN:HA	2.13	0.48
1:D:39:GLU:HG2	6:D:819:HOH:O	2.14	0.47
1:C:198:ARG:NH2	4:C:405:SO4:O1	2.44	0.47
1:D:87:LEU:O	1:D:116:LYS:HE3	2.15	0.46
1:B:104:GLU:O	1:B:108:ARG:HG3	2.16	0.46
1:D:89:THR:HB	3:D:403:GOL:H32	1.96	0.46
1:A:107:LYS:NZ	1:A:111:ASP:OD1	2.41	0.46
1:A:149:LEU:HD13	1:C:211:PRO:HD3	1.98	0.45
1:D:107:LYS:HE2	6:D:614:HOH:O	2.17	0.43
1:A:37:ASP:OD1	1:A:37:ASP:C	2.56	0.43
1:D:38[A]:HIS:HE1	1:D:42:GLU:OE2	2.01	0.43
1:C:197:PRO:O	1:C:198:ARG:C	2.55	0.42
1:B:92:PHE:CG	1:B:293:VAL:HG22	2.55	0.42
1:B:1:MET:O	1:B:2:VAL:C	2.58	0.42
1:A:64:ASP:C	1:A:64:ASP:OD1	2.58	0.42
1:B:211:PRO:HD3	1:D:149:LEU:HD13	2.02	0.41
1:B:116:LYS:HD2	6:B:785:HOH:O	2.20	0.41

*Continued on next page...*

*Continued from previous page...*

Atom-1	Atom-2	Interatomic distance (Å)	Clash overlap (Å)
1:D:197:PRO:HG2	1:D:211:PRO:HG2	2.02	0.41
1:B:126:MET:HG3	1:B:282:TYR:CE1	2.54	0.41
3:A:402:GOL:H11	1:B:267:GLN:HA	2.02	0.41
1:D:90:ASP:CG	3:D:403:GOL:HO3	2.24	0.41
1:C:1:MET:HG3	1:C:2:VAL:N	2.36	0.41
1:A:129:TYR:CD2	1:A:285:GLU:HB2	2.56	0.40

There are no symmetry-related clashes.

## 5.3 Torsion angles [i](#)

### 5.3.1 Protein backbone [i](#)

In the following table, the Percentiles column shows the percent Ramachandran outliers of the chain as a percentile score with respect to all X-ray entries followed by that with respect to entries of similar resolution.

The Analysed column shows the number of residues for which the backbone conformation was analysed, and the total number of residues.

Mol	Chain	Analysed	Favoured	Allowed	Outliers	Percentiles	
1	A	337/351 (96%)	331 (98%)	6 (2%)	0	100	100
1	B	338/351 (96%)	330 (98%)	8 (2%)	0	100	100
1	C	338/351 (96%)	331 (98%)	7 (2%)	0	100	100
1	D	343/351 (98%)	338 (98%)	5 (2%)	0	100	100
All	All	1356/1404 (97%)	1330 (98%)	26 (2%)	0	100	100

There are no Ramachandran outliers to report.

### 5.3.2 Protein sidechains [i](#)

In the following table, the Percentiles column shows the percent sidechain outliers of the chain as a percentile score with respect to all X-ray entries followed by that with respect to entries of similar resolution.

The Analysed column shows the number of residues for which the sidechain conformation was analysed, and the total number of residues.

Mol	Chain	Analysed	Rotameric	Outliers	Percentiles	
1	A	282/292 (97%)	279 (99%)	3 (1%)	80	63
1	B	283/292 (97%)	281 (99%)	2 (1%)	88	78
1	C	283/292 (97%)	280 (99%)	3 (1%)	80	63
1	D	288/292 (99%)	285 (99%)	3 (1%)	82	67
All	All	1136/1168 (97%)	1125 (99%)	11 (1%)	82	67

All (11) residues with a non-rotameric sidechain are listed below:

Mol	Chain	Res	Type
1	A	73	VAL
1	A	97	LYS
1	A	126	MET
1	B	97	LYS
1	B	126	MET
1	C	97	LYS
1	C	126	MET
1	C	319	ARG
1	D	1	MET
1	D	97	LYS
1	D	126	MET

Some sidechains can be flipped to improve hydrogen bonding and reduce clashes. All (2) such sidechains are listed below:

Mol	Chain	Res	Type
1	A	266	GLN
1	A	318	ASN

### 5.3.3 RNA ⓘ

There are no RNA molecules in this entry.

## 5.4 Non-standard residues in protein, DNA, RNA chains ⓘ

There are no non-standard protein/DNA/RNA residues in this entry.

## 5.5 Carbohydrates ⓘ

There are no carbohydrates in this entry.

## 5.6 Ligand geometry

19 ligands are modelled in this entry.

In the following table, the Counts columns list the number of bonds (or angles) for which Mogul statistics could be retrieved, the number of bonds (or angles) that are observed in the model and the number of bonds (or angles) that are defined in the chemical component dictionary. The Link column lists molecule types, if any, to which the group is linked. The Z score for a bond length (or angle) is the number of standard deviations the observed value is removed from the expected value. A bond length (or angle) with  $|Z| > 2$  is considered an outlier worth inspection. RMSZ is the root-mean-square of all Z scores of the bond lengths (or angles).

Mol	Type	Chain	Res	Link	Bond lengths			Bond angles		
					Counts	RMSZ	# Z  > 2	Counts	RMSZ	# Z  > 2
2	NAD	A	401	-	38,48,48	1.67	8 (21%)	47,73,73	1.79	6 (12%)
3	GOL	A	402	-	5,5,5	0.42	0	5,5,5	1.26	0
3	GOL	A	403	-	5,5,5	0.55	0	5,5,5	1.99	1 (20%)
4	SO4	A	404	-	4,4,4	0.81	0	6,6,6	0.79	0
4	SO4	A	405	-	4,4,4	0.48	0	6,6,6	0.51	0
2	NAD	B	401	-	38,48,48	1.51	7 (18%)	47,73,73	1.62	9 (19%)
3	GOL	B	402	-	5,5,5	0.40	0	5,5,5	0.88	0
4	SO4	B	403	-	4,4,4	0.21	0	6,6,6	0.35	0
4	SO4	B	404	-	4,4,4	1.21	1 (25%)	6,6,6	2.30	1 (16%)
2	NAD	C	401	-	38,48,48	1.66	9 (23%)	47,73,73	1.49	5 (10%)
3	GOL	C	402	-	5,5,5	0.72	0	5,5,5	1.40	1 (20%)
3	GOL	C	403	-	5,5,5	0.56	0	5,5,5	1.61	1 (20%)
3	GOL	C	404	-	5,5,5	0.47	0	5,5,5	2.02	1 (20%)
4	SO4	C	405	-	4,4,4	0.46	0	6,6,6	0.50	0
2	NAD	D	401	-	38,48,48	1.51	9 (23%)	47,73,73	1.79	8 (17%)
5	CBU	D	402	-	12,12,12	2.49	9 (75%)	18,18,18	2.65	5 (27%)
3	GOL	D	403	-	5,5,5	0.45	0	5,5,5	1.87	2 (40%)
3	GOL	D	404	-	5,5,5	0.27	0	5,5,5	0.63	0
4	SO4	D	405	-	4,4,4	0.61	0	6,6,6	0.33	0

In the following table, the Chirals column lists the number of chiral outliers, the number of chiral centers analysed, the number of these observed in the model and the number defined in the chemical component dictionary. Similar counts are reported in the Torsion and Rings columns. '-' means no outliers of that kind were identified.

Mol	Type	Chain	Res	Link	Chirals	Torsions	Rings
2	NAD	A	401	-	-	0/22/62/62	0/5/5/5
3	GOL	A	402	-	-	0/4/4/4	0/0/0/0
3	GOL	A	403	-	-	0/4/4/4	0/0/0/0

*Continued on next page...*

*Continued from previous page...*

Mol	Type	Chain	Res	Link	Chirals	Torsions	Rings
4	SO4	A	404	-	-	0/0/0/0	0/0/0/0
4	SO4	A	405	-	-	0/0/0/0	0/0/0/0
2	NAD	B	401	-	-	0/22/62/62	0/5/5/5
3	GOL	B	402	-	-	0/4/4/4	0/0/0/0
4	SO4	B	403	-	-	0/0/0/0	0/0/0/0
4	SO4	B	404	-	-	0/0/0/0	0/0/0/0
2	NAD	C	401	-	-	0/22/62/62	0/5/5/5
3	GOL	C	402	-	-	0/4/4/4	0/0/0/0
3	GOL	C	403	-	-	0/4/4/4	0/0/0/0
3	GOL	C	404	-	-	0/4/4/4	0/0/0/0
4	SO4	C	405	-	-	0/0/0/0	0/0/0/0
2	NAD	D	401	-	-	0/22/62/62	0/5/5/5
5	CBU	D	402	-	-	0/0/24/24	0/1/1/1
3	GOL	D	403	-	-	0/4/4/4	0/0/0/0
3	GOL	D	404	-	-	0/4/4/4	0/0/0/0
4	SO4	D	405	-	-	0/0/0/0	0/0/0/0

All (43) bond length outliers are listed below:

Mol	Chain	Res	Type	Atoms	Z	Observed(Å)	Ideal(Å)
2	C	401	NAD	PN-O2N	-3.73	1.39	1.54
2	A	401	NAD	PN-O2N	-3.59	1.39	1.54
2	A	401	NAD	O7N-C7N	-3.54	1.16	1.24
2	A	401	NAD	PA-O2A	-3.53	1.39	1.54
2	B	401	NAD	O7N-C7N	-3.45	1.16	1.24
2	C	401	NAD	O7N-C7N	-3.23	1.17	1.24
2	B	401	NAD	PA-O2A	-3.21	1.41	1.54
2	D	401	NAD	O4B-C4B	-3.15	1.37	1.45
2	D	401	NAD	PA-O2A	-2.97	1.42	1.54
2	C	401	NAD	O4D-C4D	-2.93	1.38	1.45
2	D	401	NAD	PN-O2N	-2.90	1.42	1.54
2	C	401	NAD	PA-O2A	-2.73	1.43	1.54
2	B	401	NAD	PA-O1A	-2.73	1.41	1.51
2	B	401	NAD	PN-O2N	-2.72	1.43	1.54
2	D	401	NAD	C4A-N3A	-2.61	1.31	1.35
2	A	401	NAD	C2A-N1A	-2.60	1.29	1.33
2	D	401	NAD	PN-O1N	-2.50	1.42	1.51
2	B	401	NAD	O4B-C4B	-2.50	1.39	1.45
2	C	401	NAD	PN-O1N	-2.49	1.42	1.51
2	C	401	NAD	C4A-N3A	-2.48	1.31	1.35
2	C	401	NAD	O4B-C4B	-2.46	1.39	1.45
2	A	401	NAD	O4B-C4B	-2.44	1.39	1.45

*Continued on next page...*

*Continued from previous page...*

Mol	Chain	Res	Type	Atoms	Z	Observed(Å)	Ideal(Å)
2	D	401	NAD	O7N-C7N	-2.39	1.19	1.24
2	A	401	NAD	C5A-N7A	-2.31	1.31	1.39
4	B	404	SO4	O2-S	-2.30	1.39	1.47
2	D	401	NAD	PA-O1A	-2.29	1.42	1.51
2	D	401	NAD	C2A-N1A	-2.28	1.29	1.33
5	D	402	CBU	OXT-C5	-2.25	1.37	1.43
5	D	402	CBU	O2-C2	-2.23	1.37	1.43
2	C	401	NAD	PA-O1A	-2.23	1.43	1.51
5	D	402	CBU	O4-C4	-2.20	1.37	1.43
2	A	401	NAD	O2D-C2D	-2.20	1.37	1.43
2	B	401	NAD	C2N-C3N	-2.20	1.35	1.39
2	B	401	NAD	O4D-C4D	-2.15	1.40	1.45
2	C	401	NAD	C5A-N7A	-2.15	1.32	1.39
2	D	401	NAD	C5A-N7A	-2.04	1.32	1.39
5	D	402	CBU	O1-C1	-2.04	1.38	1.43
2	A	401	NAD	O4D-C4D	-2.03	1.40	1.45
5	D	402	CBU	C2-C1	2.64	1.59	1.52
5	D	402	CBU	C6-C1	2.70	1.59	1.52
5	D	402	CBU	C5-C4	2.77	1.59	1.52
5	D	402	CBU	C3-C2	3.53	1.61	1.52
5	D	402	CBU	C4-C3	4.16	1.63	1.52

All (40) bond angle outliers are listed below:

Mol	Chain	Res	Type	Atoms	Z	Observed(°)	Ideal(°)
2	A	401	NAD	N3A-C2A-N1A	-8.64	122.28	128.89
2	C	401	NAD	N3A-C2A-N1A	-7.21	123.37	128.89
5	D	402	CBU	C5-C6-C1	-5.91	99.76	110.79
5	D	402	CBU	C5-C4-C3	-5.18	101.13	110.79
2	B	401	NAD	O7N-C7N-C3N	-5.12	114.00	119.59
2	B	401	NAD	N3A-C2A-N1A	-5.12	124.98	128.89
4	B	404	SO4	O2-S-O1	-4.87	94.05	109.50
2	D	401	NAD	N3A-C2A-N1A	-4.62	125.36	128.89
3	A	403	GOL	O3-C3-C2	-3.75	92.00	110.18
3	C	404	GOL	O1-C1-C2	-3.43	93.57	110.18
2	D	401	NAD	O7N-C7N-C3N	-3.25	116.03	119.59
3	D	403	GOL	O3-C3-C2	-3.14	94.96	110.18
2	C	401	NAD	C1B-N9A-C4A	-3.10	122.27	126.94
2	A	401	NAD	C4A-C5A-N7A	-2.84	106.86	109.48
3	C	403	GOL	C3-C2-C1	-2.45	101.50	111.12
3	D	403	GOL	C3-C2-C1	-2.39	101.77	111.12
2	D	401	NAD	C1B-N9A-C4A	-2.23	123.58	126.94

*Continued on next page...*

*Continued from previous page...*

Mol	Chain	Res	Type	Atoms	Z	Observed(°)	Ideal(°)
2	B	401	NAD	O3-PN-O5D	-2.21	97.07	102.94
2	B	401	NAD	PN-O3-PA	-2.19	126.58	132.73
2	B	401	NAD	C4A-C5A-N7A	-2.15	107.50	109.48
5	D	402	CBU	O2-C2-C3	-2.13	105.55	110.34
3	C	402	GOL	O3-C3-C2	-2.05	100.26	110.18
2	B	401	NAD	O7N-C7N-N7N	2.16	125.64	122.59
2	C	401	NAD	O3-PA-O5B	2.17	108.68	102.94
2	C	401	NAD	N6A-C6A-N1A	2.20	123.93	119.20
2	B	401	NAD	C3N-C7N-N7N	2.27	120.30	117.82
2	A	401	NAD	C4D-O4D-C1D	2.36	112.31	109.72
2	B	401	NAD	C4D-O4D-C1D	2.45	112.41	109.72
2	C	401	NAD	C2A-N1A-C6A	2.51	123.25	118.77
2	D	401	NAD	C2A-N1A-C6A	2.51	123.26	118.77
2	A	401	NAD	O2A-PA-O3	2.61	116.92	105.09
2	A	401	NAD	C2A-N1A-C6A	2.72	123.63	118.77
2	B	401	NAD	O4D-C1D-N1N	2.81	111.22	108.13
2	D	401	NAD	N6A-C6A-N1A	2.95	125.54	119.20
5	D	402	CBU	C6-C5-C4	3.48	117.29	110.79
2	A	401	NAD	O4D-C1D-N1N	3.76	112.27	108.13
2	D	401	NAD	O7N-C7N-N7N	3.94	128.14	122.59
2	D	401	NAD	C4D-O4D-C1D	4.10	114.23	109.72
2	D	401	NAD	O4D-C1D-N1N	4.62	113.20	108.13
5	D	402	CBU	OXT-C5-C4	6.29	124.49	110.34

There are no chirality outliers.

There are no torsion outliers.

There are no ring outliers.

5 monomers are involved in 7 short contacts:

Mol	Chain	Res	Type	Clashes	Symm-Clashes
3	A	402	GOL	2	0
4	C	405	SO4	1	0
2	D	401	NAD	2	0
5	D	402	CBU	2	0
3	D	403	GOL	2	0

## 5.7 Other polymers ⓘ

There are no such residues in this entry.

## 5.8 Polymer linkage issues ⓘ

There are no chain breaks in this entry.

## 6 Fit of model and data ⓘ

### 6.1 Protein, DNA and RNA chains ⓘ

In the following table, the column labelled ‘#RSRZ> 2’ contains the number (and percentage) of RSRZ outliers, followed by percent RSRZ outliers for the chain as percentile scores relative to all X-ray entries and entries of similar resolution. The OWAB column contains the minimum, median, 95<sup>th</sup> percentile and maximum values of the occupancy-weighted average B-factor per residue. The column labelled ‘Q< 0.9’ lists the number of (and percentage) of residues with an average occupancy less than 0.9.

Mol	Chain	Analysed	<RSRZ>	#RSRZ>2	OWAB(Å <sup>2</sup> )	Q<0.9
1	A	339/351 (96%)	-0.18	13 (3%) 44 41	13, 21, 37, 52	16 (4%)
1	B	339/351 (96%)	-0.24	7 (2%) 67 65	11, 20, 32, 44	12 (3%)
1	C	339/351 (96%)	-0.39	1 (0%) 94 94	12, 19, 30, 38	14 (4%)
1	D	339/351 (96%)	-0.58	3 (0%) 85 85	11, 16, 27, 36	11 (3%)
All	All	1356/1404 (96%)	-0.35	24 (1%) 71 70	11, 19, 33, 52	53 (3%)

All (24) RSRZ outliers are listed below:

Mol	Chain	Res	Type	RSRZ
1	B	1	MET	7.2
1	D	256	LEU	6.3
1	A	253	ASN	5.7
1	C	1	MET	4.8
1	A	38	HIS	4.4
1	A	332	ALA	3.8
1	B	253	ASN	3.6
1	B	66	ASP	3.4
1	A	46	ARG	3.1
1	B	65	PRO	3.0
1	A	333	GLY	3.0
1	A	55	TYR	2.7
1	A	39	GLU	2.7
1	A	56	PRO	2.6
1	A	134	ARG	2.6
1	B	336	THR	2.4
1	A	1	MET	2.4
1	A	336	THR	2.3
1	D	1	MET	2.3
1	A	49	HIS	2.2
1	A	339	GLN	2.1

*Continued on next page...*

*Continued from previous page...*

Mol	Chain	Res	Type	RSRZ
1	B	51	ASN	2.1
1	D	117	SER	2.0
1	B	90	ASP	2.0

## 6.2 Non-standard residues in protein, DNA, RNA chains [i](#)

There are no non-standard protein/DNA/RNA residues in this entry.

## 6.3 Carbohydrates [i](#)

There are no carbohydrates in this entry.

## 6.4 Ligands [i](#)

In the following table, the Atoms column lists the number of modelled atoms in the group and the number defined in the chemical component dictionary. LLDF column lists the quality of electron density of the group with respect to its neighbouring residues in protein, DNA or RNA chains. The B-factors column lists the minimum, median, 95<sup>th</sup> percentile and maximum values of B factors of atoms in the group. The column labelled 'Q< 0.9' lists the number of atoms with occupancy less than 0.9.

Mol	Type	Chain	Res	Atoms	RSCC	RSR	LLDF	B-factors(Å <sup>2</sup> )	Q<0.9
3	GOL	C	403	6/6	0.80	0.19	17.94	33,34,40,42	0
3	GOL	D	404	6/6	0.95	0.11	10.75	26,28,29,30	0
3	GOL	C	402	6/6	0.91	0.16	8.78	27,31,33,33	0
3	GOL	C	404	6/6	0.86	0.17	6.41	27,29,32,33	0
5	CBU	D	402	12/12	0.92	0.11	5.84	16,20,23,24	0
3	GOL	D	403	6/6	0.83	0.21	3.54	24,29,31,42	0
3	GOL	B	402	6/6	0.77	0.14	3.46	26,29,31,36	0
3	GOL	A	402	6/6	0.90	0.25	1.98	29,30,37,41	0
4	SO4	A	404	5/5	0.97	0.09	1.91	23,24,29,30	5
3	GOL	A	403	6/6	0.90	0.11	1.64	26,27,28,28	0
2	NAD	B	401	44/44	0.94	0.10	1.26	14,19,22,26	0
2	NAD	C	401	44/44	0.95	0.11	1.10	14,17,19,21	0
2	NAD	D	401	44/44	0.97	0.07	1.03	12,15,18,20	0
4	SO4	B	403	5/5	0.97	0.08	-0.26	23,30,32,37	5
2	NAD	A	401	44/44	0.92	0.09	-0.26	19,25,29,32	0
4	SO4	A	405	5/5	0.96	0.09	-	23,24,26,28	5
4	SO4	C	405	5/5	0.97	0.14	-	22,26,30,31	5
4	SO4	D	405	5/5	0.98	0.08	-	25,29,33,36	5

*Continued on next page...*

*Continued from previous page...*

Mol	Type	Chain	Res	Atoms	RSCC	RSR	LLDF	B-factors( $\text{\AA}^2$ )	Q<0.9
4	SO4	B	404	5/5	0.87	0.27	-	22,24,29,31	5

## 6.5 Other polymers [i](#)

There are no such residues in this entry.