



# Full wwPDB X-ray Structure Validation Report ⓘ

Feb 1, 2016 – 06:44 PM GMT

PDB ID : 4MM6  
Title : Crystal structure of LeuBAT (delta13 mutant) in complex with (S)-duloxetine  
Authors : Wang, H.; Gouaux, E.  
Deposited on : 2013-09-08  
Resolution : 3.10 Å(reported)

This is a Full wwPDB X-ray Structure Validation Report for a publicly released PDB entry.  
We welcome your comments at [validation@mail.wwpdb.org](mailto:validation@mail.wwpdb.org)  
A user guide is available at  
<http://wwpdb.org/validation/2016/XrayValidationReportHelp>  
with specific help available everywhere you see the ⓘ symbol.

---

The following versions of software and data (see [references ⓘ](#)) were used in the production of this report:

MolProbity : 4.02b-467  
Mogul : 1.7 (RC4), CSD as536be (2015)  
Xtriage (Phenix) : 1.9-1692  
EDS : rb-20026688  
Percentile statistics : 20151230.v01 (using entries in the PDB archive December 30th 2015)  
Refmac : 5.8.0135  
CCP4 : 6.5.0  
Ideal geometry (proteins) : Engh & Huber (2001)  
Ideal geometry (DNA, RNA) : Parkinson et al. (1996)  
Validation Pipeline (wwPDB-VP) : trunk26865

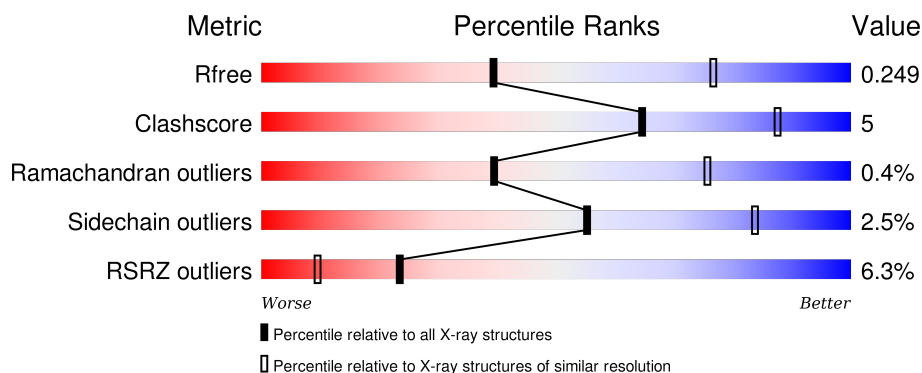
# 1 Overall quality at a glance

The following experimental techniques were used to determine the structure:

## *X-RAY DIFFRACTION*

The reported resolution of this entry is 3.10 Å.

Percentile scores (ranging between 0-100) for global validation metrics of the entry are shown in the following graphic. The table shows the number of entries on which the scores are based.



Metric	Whole archive (#Entries)	Similar resolution (#Entries, resolution range(Å))
$R_{free}$	91344	1114 (3.14-3.06)
Clashscore	102246	1222 (3.14-3.06)
Ramachandran outliers	100387	1174 (3.14-3.06)
Sidechain outliers	100360	1174 (3.14-3.06)
RSRZ outliers	91569	1119 (3.14-3.06)

The table below summarises the geometric issues observed across the polymeric chains and their fit to the electron density. The red, orange, yellow and green segments on the lower bar indicate the fraction of residues that contain outliers for  $\geq 3$ , 2, 1 and 0 types of geometric quality criteria. A grey segment represents the fraction of residues that are not modelled. The numeric value for each fraction is indicated below the corresponding segment, with a dot representing fractions  $\leq 5\%$ . The upper red bar (where present) indicates the fraction of residues that have poor fit to the electron density. The numeric value is given above the bar.

Mol	Chain	Length	Quality of chain
1	A	519	<div> <div>6%</div> <div>82%</div> <div>15%</div> <div>.</div> </div>

The following table lists non-polymeric compounds, carbohydrate monomers and non-standard residues in protein, DNA, RNA chains that are outliers for geometric or electron-density-fit criteria:

Mol	Type	Chain	Res	Chirality	Geometry	Clashes	Electron density
2	NA	A	601	-	-	-	X

## 2 Entry composition

There are 4 unique types of molecules in this entry. The entry contains 4029 atoms, of which 0 are hydrogens and 0 are deuteriums.

In the tables below, the ZeroOcc column contains the number of atoms modelled with zero occupancy, the AltConf column contains the number of residues with at least one atom in alternate conformation and the Trace column contains the number of residues modelled with at most 2 atoms.

- Molecule 1 is a protein called Transporter.

Mol	Chain	Residues	Atoms					ZeroOcc	AltConf	Trace
1	A	504	Total	C	N	O	S	0	0	0
			4005	2713	627	653	12			

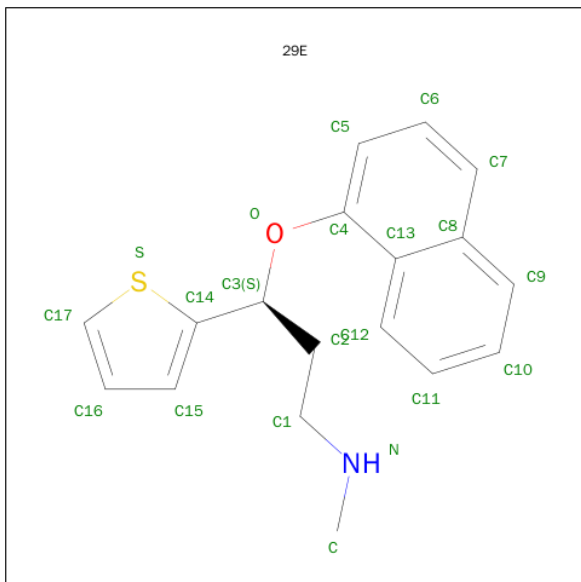
There are 19 discrepancies between the modelled and reference sequences:

Chain	Residue	Modelled	Actual	Comment	Reference
A	21	TYR	ASN	ENGINEERED MUTATION	UNP O67854
A	24	ASP	GLY	ENGINEERED MUTATION	UNP O67854
A	106	SER	ILE	ENGINEERED MUTATION	UNP O67854
A	254	SER	THR	ENGINEERED MUTATION	UNP O67854
A	256	GLY	SER	ENGINEERED MUTATION	UNP O67854
A	261	VAL	ALA	ENGINEERED MUTATION	UNP O67854
A	262	LEU	ILE	ENGINEERED MUTATION	UNP O67854
A	265	PHE	TYR	ENGINEERED MUTATION	UNP O67854
A	290	SER	GLU	ENGINEERED MUTATION	UNP O67854
A	359	GLY	ILE	ENGINEERED MUTATION	UNP O67854
A	362	GLY	PRO	ENGINEERED MUTATION	UNP O67854
A	408	THR	GLY	ENGINEERED MUTATION	UNP O67854
A	409	GLY	THR	ENGINEERED MUTATION	UNP O67854
A	514	GLY	-	EXPRESSION TAG	UNP O67854
A	515	THR	-	EXPRESSION TAG	UNP O67854
A	516	LEU	-	EXPRESSION TAG	UNP O67854
A	517	VAL	-	EXPRESSION TAG	UNP O67854
A	518	PRO	-	EXPRESSION TAG	UNP O67854
A	519	ARG	-	EXPRESSION TAG	UNP O67854

- Molecule 2 is SODIUM ION (three-letter code: NA) (formula: Na).

Mol	Chain	Residues	Atoms		ZeroOcc	AltConf
2	A	2	Total	Na	0	0
			2	2		

- Molecule 3 is (3S)-N-METHYL-3-(NAPHTHALEN-1-YLOXY)-3-(THIOPHEN-2-YL)PROPAN-1-AMINE (three-letter code: 29E) (formula: C<sub>18</sub>H<sub>19</sub>NOS).



Mol	Chain	Residues	Atoms					ZeroOcc	AltConf
3	A	1	Total	C	N	O	S	0	0
			21	18	1	1	1		

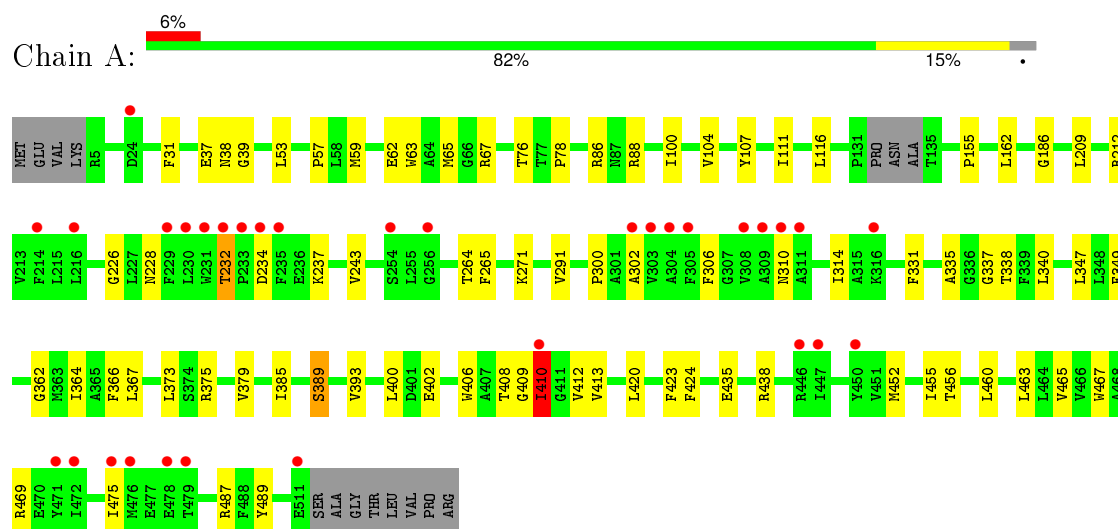
- Molecule 4 is water.

Mol	Chain	Residues	Atoms		ZeroOcc	AltConf
4	A	1	Total	O	0	0
			1	1		

### 3 Residue-property plots [i](#)

These plots are drawn for all protein, RNA and DNA chains in the entry. The first graphic for a chain summarises the proportions of errors displayed in the second graphic. The second graphic shows the sequence view annotated by issues in geometry and electron density. Residues are color-coded according to the number of geometric quality criteria for which they contain at least one outlier: green = 0, yellow = 1, orange = 2 and red = 3 or more. A red dot above a residue indicates a poor fit to the electron density ( $RSRZ > 2$ ). Stretches of 2 or more consecutive residues without any outlier are shown as a green connector. Residues present in the sample, but not in the model, are shown in grey.

#### • Molecule 1: Transporter



## 4 Data and refinement statistics

Property	Value	Source
Space group	C 1 2 1	Depositor
Cell constants a, b, c, $\alpha$ , $\beta$ , $\gamma$	87.90Å 88.38Å 81.31Å 90.00° 94.84° 90.00°	Depositor
Resolution (Å)	38.80 – 3.10 38.80 – 3.08	Depositor EDS
% Data completeness (in resolution range)	95.1 (38.80-3.10) 95.3 (38.80-3.08)	Depositor EDS
$R_{merge}$	0.12	Depositor
$R_{sym}$	(Not available)	Depositor
$\langle I/\sigma(I) \rangle$ <sup>1</sup>	1.26 (at 3.06Å)	Xtriage
Refinement program	PHENIX (phenix.refine: 1.8.1_1168)	Depositor
R, $R_{free}$	0.214 , 0.235 0.231 , 0.249	Depositor DCC
$R_{free}$ test set	527 reflections (5.08%)	DCC
Wilson B-factor (Å <sup>2</sup> )	71.9	Xtriage
Anisotropy	0.744	Xtriage
Bulk solvent $k_{sol}$ (e/Å <sup>3</sup> ), $B_{sol}$ (Å <sup>2</sup> )	0.33 , 57.9	EDS
Estimated twinning fraction	No twinning to report.	Xtriage
L-test for twinning <sup>2</sup>	$\langle  L  \rangle = 0.49$ , $\langle L^2 \rangle = 0.32$	Xtriage
Outliers	0 of 10993 reflections	Xtriage
$F_o, F_c$ correlation	0.92	EDS
Total number of atoms	4029	wwPDB-VP
Average B, all atoms (Å <sup>2</sup> )	53.0	wwPDB-VP

Xtriage's analysis on translational NCS is as follows: *The largest off-origin peak in the Patterson function is 6.29% of the height of the origin peak. No significant pseudotranslation is detected.*

<sup>1</sup>Intensities estimated from amplitudes.

<sup>2</sup>Theoretical values of  $\langle |L| \rangle$ ,  $\langle L^2 \rangle$  for acentric reflections are 0.5, 0.375 respectively for untwinned datasets, and 0.333, 0.2 for perfectly twinned datasets.

## 5 Model quality [i](#)

### 5.1 Standard geometry [i](#)

Bond lengths and bond angles in the following residue types are not validated in this section: NA, 29E

The Z score for a bond length (or angle) is the number of standard deviations the observed value is removed from the expected value. A bond length (or angle) with  $|Z| > 5$  is considered an outlier worth inspection. RMSZ is the root-mean-square of all Z scores of the bond lengths (or angles).

Mol	Chain	Bond lengths		Bond angles	
		RMSZ	$\# Z  > 5$	RMSZ	$\# Z  > 5$
1	A	0.27	0/4131	0.43	1/5624 (0.0%)

There are no bond length outliers.

All (1) bond angle outliers are listed below:

Mol	Chain	Res	Type	Atoms	Z	Observed( $^{\circ}$ )	Ideal( $^{\circ}$ )
1	A	410	ILE	CB-CA-C	-6.89	97.81	111.60

There are no chirality outliers.

There are no planarity outliers.

### 5.2 Too-close contacts [i](#)

In the following table, the Non-H and H(model) columns list the number of non-hydrogen atoms and hydrogen atoms in the chain respectively. The H(added) column lists the number of hydrogen atoms added and optimized by MolProbity. The Clashes column lists the number of clashes within the asymmetric unit, whereas Symm-Clashes lists symmetry related clashes.

Mol	Chain	Non-H	H(model)	H(added)	Clashes	Symm-Clashes
1	A	4005	0	4077	41	0
2	A	2	0	0	0	0
3	A	21	0	19	0	0
4	A	1	0	0	0	0
All	All	4029	0	4096	41	0

The all-atom clashscore is defined as the number of clashes found per 1000 atoms (including hydrogen atoms). The all-atom clashscore for this structure is 5.

All (41) close contacts within the same asymmetric unit are listed below, sorted by their clash

magnitude.

Atom-1	Atom-2	Interatomic distance (Å)	Clash overlap (Å)
1:A:226:GLY:HA3	1:A:300:PRO:HA	1.73	0.71
1:A:228:ASN:O	1:A:232:THR:OG1	2.12	0.66
1:A:155:PRO:HD3	1:A:162:LEU:HD23	1.76	0.66
1:A:67:ARG:NH2	1:A:435:GLU:O	2.30	0.64
1:A:402:GLU:OE2	1:A:406:TRP:NE1	2.30	0.59
1:A:271:LYS:O	1:A:438:ARG:NH1	2.35	0.59
1:A:107:TYR:HB3	1:A:393:VAL:HG21	1.86	0.58
1:A:331:PHE:O	1:A:337:GLY:HA3	2.06	0.56
1:A:385:ILE:O	1:A:389:SER:OG	2.25	0.55
1:A:212:ARG:NH2	1:A:335:ALA:O	2.39	0.55
1:A:76:THR:HG21	1:A:366:PHE:HB2	1.89	0.54
1:A:389:SER:HB3	1:A:489:TYR:HE2	1.74	0.51
1:A:38:ASN:HB3	1:A:243:VAL:HG13	1.92	0.51
1:A:367:LEU:HB3	1:A:373:LEU:HD22	1.94	0.50
1:A:420:LEU:HD11	1:A:456:THR:HG22	1.94	0.49
1:A:302:ALA:HB1	1:A:314:ILE:HD13	1.93	0.49
1:A:62:GLU:HA	1:A:65:MET:HE3	1.94	0.49
1:A:53:LEU:HD22	1:A:455:ILE:HG21	1.96	0.48
1:A:389:SER:HB3	1:A:489:TYR:CE2	2.49	0.47
1:A:264:THR:HG21	1:A:362:GLY:HA2	1.97	0.47
1:A:475:ILE:HG22	1:A:487:ARG:HH21	1.80	0.47
1:A:406:TRP:CZ3	1:A:410:ILE:HD11	2.51	0.45
1:A:104:VAL:HA	1:A:107:TYR:CE2	2.52	0.45
1:A:420:LEU:HD12	1:A:460:LEU:HD12	1.99	0.44
1:A:31:PHE:CZ	1:A:291:VAL:HG12	2.53	0.44
1:A:465:VAL:O	1:A:469:ARG:HG2	2.18	0.44
1:A:116:LEU:HB2	1:A:349:PHE:CD1	2.53	0.44
1:A:306:PHE:O	1:A:310:ASN:ND2	2.49	0.44
1:A:76:THR:HB	1:A:78:PRO:HD2	2.00	0.42
1:A:57:PRO:HB3	1:A:452:MET:HG2	2.01	0.42
1:A:59:MET:O	1:A:63:TRP:HD1	2.03	0.41
1:A:410:ILE:HG12	1:A:467:TRP:CZ2	2.55	0.41
1:A:100:ILE:O	1:A:104:VAL:HG23	2.21	0.41
1:A:39:GLY:HA2	1:A:234:ASP:HB3	2.03	0.41
1:A:111:ILE:HD11	1:A:400:LEU:HD11	2.02	0.41
1:A:364:ILE:HD13	1:A:379:VAL:HG22	2.03	0.41
1:A:209:LEU:HD12	1:A:347:LEU:HD22	2.03	0.41
1:A:65:MET:HG2	1:A:423:PHE:CD1	2.57	0.41
1:A:186:GLY:HA2	1:A:375:ARG:HD2	2.03	0.40
1:A:37:GLU:O	1:A:237:LYS:NZ	2.45	0.40
1:A:412:VAL:HG23	1:A:413:VAL:N	2.37	0.40



There are no symmetry-related clashes.

## 5.3 Torsion angles [i](#)

### 5.3.1 Protein backbone [i](#)

In the following table, the Percentiles column shows the percent Ramachandran outliers of the chain as a percentile score with respect to all X-ray entries followed by that with respect to entries of similar resolution.

The Analysed column shows the number of residues for which the backbone conformation was analysed, and the total number of residues.

Mol	Chain	Analysed	Favoured	Allowed	Outliers	Percentiles
1	A	500/519 (96%)	482 (96%)	16 (3%)	2 (0%)	39 75

All (2) Ramachandran outliers are listed below:

Mol	Chain	Res	Type
1	A	408	THR
1	A	409	GLY

### 5.3.2 Protein sidechains [i](#)

In the following table, the Percentiles column shows the percent sidechain outliers of the chain as a percentile score with respect to all X-ray entries followed by that with respect to entries of similar resolution.

The Analysed column shows the number of residues for which the sidechain conformation was analysed, and the total number of residues.

Mol	Chain	Analysed	Rotameric	Outliers	Percentiles
1	A	406/419 (97%)	396 (98%)	10 (2%)	55 84

All (10) residues with a non-rotameric sidechain are listed below:

Mol	Chain	Res	Type
1	A	86	ARG
1	A	88	ARG
1	A	232	THR
1	A	265	PHE
1	A	338	THR
1	A	340	LEU

*Continued on next page...*

*Continued from previous page...*

Mol	Chain	Res	Type
1	A	389	SER
1	A	410	ILE
1	A	424	PHE
1	A	463	LEU

Some sidechains can be flipped to improve hydrogen bonding and reduce clashes. There are no such sidechains identified.

### 5.3.3 RNA [i](#)

There are no RNA molecules in this entry.

### 5.4 Non-standard residues in protein, DNA, RNA chains [i](#)

There are no non-standard protein/DNA/RNA residues in this entry.

### 5.5 Carbohydrates [i](#)

There are no carbohydrates in this entry.

### 5.6 Ligand geometry [i](#)

Of 3 ligands modelled in this entry, 2 are monoatomic - leaving 1 for Mogul analysis.

In the following table, the Counts columns list the number of bonds (or angles) for which Mogul statistics could be retrieved, the number of bonds (or angles) that are observed in the model and the number of bonds (or angles) that are defined in the chemical component dictionary. The Link column lists molecule types, if any, to which the group is linked. The Z score for a bond length (or angle) is the number of standard deviations the observed value is removed from the expected value. A bond length (or angle) with  $|Z| > 2$  is considered an outlier worth inspection. RMSZ is the root-mean-square of all Z scores of the bond lengths (or angles).

Mol	Type	Chain	Res	Link	Bond lengths			Bond angles		
					Counts	RMSZ	$\# Z  > 2$	Counts	RMSZ	$\# Z  > 2$
3	29E	A	603	-	22,23,23	1.46	3 (13%)	23,30,30	2.14	7 (30%)

In the following table, the Chirals column lists the number of chiral outliers, the number of chiral centers analysed, the number of these observed in the model and the number defined in the chemical component dictionary. Similar counts are reported in the Torsion and Rings columns. '-' means no outliers of that kind were identified.

Mol	Type	Chain	Res	Link	Chirals	Torsions	Rings
3	29E	A	603	-	-	0/8/12/12	0/3/3/3

All (3) bond length outliers are listed below:

Mol	Chain	Res	Type	Atoms	Z	Observed(Å)	Ideal(Å)
3	A	603	29E	C14-C3	-4.16	1.48	1.51
3	A	603	29E	C4-C13	2.29	1.49	1.42
3	A	603	29E	C13-C8	3.14	1.49	1.42

All (7) bond angle outliers are listed below:

Mol	Chain	Res	Type	Atoms	Z	Observed(°)	Ideal(°)
3	A	603	29E	C16-C17-S	-5.53	107.10	113.23
3	A	603	29E	C15-C14-C3	-4.78	123.65	129.24
3	A	603	29E	C2-C3-C14	-2.87	106.78	112.63
3	A	603	29E	C11-C12-C13	-2.07	117.95	120.88
3	A	603	29E	O-C4-C5	-2.05	120.04	124.28
3	A	603	29E	C-N-C1	2.57	119.76	112.23
3	A	603	29E	O-C4-C13	4.17	120.43	114.36

There are no chirality outliers.

There are no torsion outliers.

There are no ring outliers.

No monomer is involved in short contacts.

## 5.7 Other polymers [i](#)

There are no such residues in this entry.

## 5.8 Polymer linkage issues [i](#)

There are no chain breaks in this entry.

## 6 Fit of model and data

### 6.1 Protein, DNA and RNA chains

In the following table, the column labelled ‘#RSRZ> 2’ contains the number (and percentage) of RSRZ outliers, followed by percent RSRZ outliers for the chain as percentile scores relative to all X-ray entries and entries of similar resolution. The OWAB column contains the minimum, median, 95<sup>th</sup> percentile and maximum values of the occupancy-weighted average B-factor per residue. The column labelled ‘Q< 0.9’ lists the number of (and percentage) of residues with an average occupancy less than 0.9.

Mol	Chain	Analysed	<RSRZ>	#RSRZ>2	OWAB(Å <sup>2</sup> )	Q<0.9
1	A	504/519 (97%)	0.15	32 (6%) 23 9	21, 49, 91, 126	0

All (32) RSRZ outliers are listed below:

Mol	Chain	Res	Type	RSRZ
1	A	229	PHE	5.1
1	A	478	GLU	4.4
1	A	447	ILE	4.2
1	A	450	TYR	4.1
1	A	511	GLU	4.0
1	A	309	ALA	3.8
1	A	304	ALA	3.6
1	A	446	ARG	3.2
1	A	475	ILE	3.2
1	A	235	PHE	3.2
1	A	479	THR	3.1
1	A	471	TYR	3.0
1	A	308	VAL	3.0
1	A	256	GLY	2.9
1	A	216	LEU	2.8
1	A	472	ILE	2.7
1	A	231	TRP	2.6
1	A	24	ASP	2.5
1	A	233	PRO	2.4
1	A	232	THR	2.4
1	A	476	MET	2.4
1	A	305	PHE	2.3
1	A	310	ASN	2.3
1	A	311	ALA	2.2
1	A	214	PHE	2.2
1	A	230	LEU	2.2
1	A	254	SER	2.2

*Continued on next page...*

*Continued from previous page...*

Mol	Chain	Res	Type	RSRZ
1	A	302	ALA	2.1
1	A	410	ILE	2.1
1	A	234	ASP	2.1
1	A	303	VAL	2.1
1	A	316	LYS	2.0

## 6.2 Non-standard residues in protein, DNA, RNA chains [i](#)

There are no non-standard protein/DNA/RNA residues in this entry.

## 6.3 Carbohydrates [i](#)

There are no carbohydrates in this entry.

## 6.4 Ligands [i](#)

In the following table, the Atoms column lists the number of modelled atoms in the group and the number defined in the chemical component dictionary. LLDF column lists the quality of electron density of the group with respect to its neighbouring residues in protein, DNA or RNA chains. The B-factors column lists the minimum, median, 95<sup>th</sup> percentile and maximum values of B factors of atoms in the group. The column labelled 'Q < 0.9' lists the number of atoms with occupancy less than 0.9.

Mol	Type	Chain	Res	Atoms	RSCC	RSR	LLDF	B-factors(Å <sup>2</sup> )	Q<0.9
2	NA	A	601	1/1	0.92	0.41	1.15	41,41,41,41	0
2	NA	A	602	1/1	0.90	0.40	0.45	44,44,44,44	0
3	29E	A	603	21/21	0.93	0.32	-0.08	25,35,46,50	0

## 6.5 Other polymers [i](#)

There are no such residues in this entry.