



Full wwPDB X-ray Structure Validation Report ⓘ

Feb 1, 2016 – 06:47 PM GMT

PDB ID : 4MPX
Title : Human beta-tryptase co-crystal structure with [(1,1,3,3-tetramethyldisiloxane-1,3-diyl)di-1-benzothi-ene-4,2-diyl]bis({4-[3-(aminomethyl)phenyl]piperidin-1-yl}methanone)
Authors : White, A.; Stein, A.J.; Suto, R.
Deposited on : 2013-09-13
Resolution : 2.00 Å(reported)

This is a Full wwPDB X-ray Structure Validation Report for a publicly released PDB entry.
We welcome your comments at validation@mail.wwpdb.org
A user guide is available at
<http://wwpdb.org/validation/2016/XrayValidationReportHelp>
with specific help available everywhere you see the ⓘ symbol.

The following versions of software and data (see [references ⓘ](#)) were used in the production of this report:

MolProbity : 4.02b-467
Mogul : 1.7 (RC4), CSD as536be (2015)
Xtriage (Phenix) : 1.9-1692
EDS : rb-20026688
Percentile statistics : 20151230.v01 (using entries in the PDB archive December 30th 2015)
Refmac : 5.8.0135
CCP4 : 6.5.0
Ideal geometry (proteins) : Engh & Huber (2001)
Ideal geometry (DNA, RNA) : Parkinson et al. (1996)
Validation Pipeline (wwPDB-VP) : trunk26865

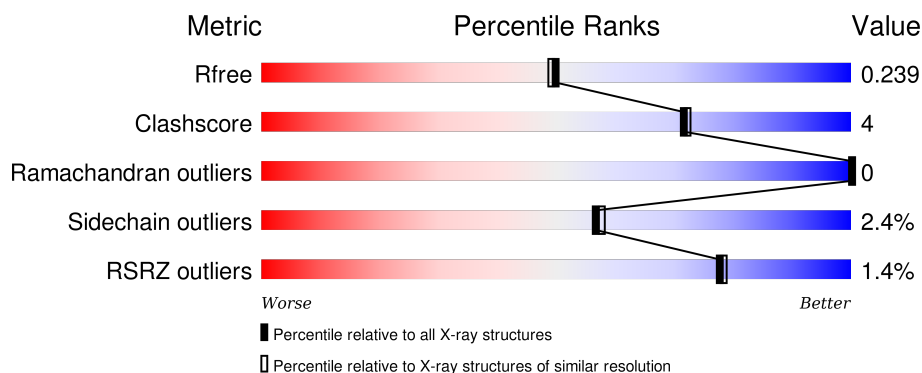
1 Overall quality at a glance ⓘ

The following experimental techniques were used to determine the structure:

X-RAY DIFFRACTION

The reported resolution of this entry is 2.00 Å.

Percentile scores (ranging between 0-100) for global validation metrics of the entry are shown in the following graphic. The table shows the number of entries on which the scores are based.



Metric	Whole archive (#Entries)	Similar resolution (#Entries, resolution range(Å))
R_{free}	91344	6249 (2.00-2.00)
Clashscore	102246	7340 (2.00-2.00)
Ramachandran outliers	100387	7248 (2.00-2.00)
Sidechain outliers	100360	7247 (2.00-2.00)
RSRZ outliers	91569	6262 (2.00-2.00)

The table below summarises the geometric issues observed across the polymeric chains and their fit to the electron density. The red, orange, yellow and green segments on the lower bar indicate the fraction of residues that contain outliers for ≥ 3 , 2, 1 and 0 types of geometric quality criteria. A grey segment represents the fraction of residues that are not modelled. The numeric value for each fraction is indicated below the corresponding segment, with a dot representing fractions $\leq 5\%$. The upper red bar (where present) indicates the fraction of residues that have poor fit to the electron density. The numeric value is given above the bar.

Mol	Chain	Length	Quality of chain
1	A	245	<div> <div></div> <div>87%</div> <div>10% ..</div> </div>
1	B	245	<div> <div>2%</div> <div>90%</div> <div>8% ..</div> </div>

The following table lists non-polymeric compounds, carbohydrate monomers and non-standard residues in protein, DNA, RNA chains that are outliers for geometric or electron-density-fit criteria:

Mol	Type	Chain	Res	Chirality	Geometry	Clashes	Electron density
2	SO4	A	301	-	-	-	X
4	PGE	A	304	-	-	-	X
4	PGE	B	306	-	-	-	X

2 Entry composition [i](#)

There are 7 unique types of molecules in this entry. The entry contains 4261 atoms, of which 0 are hydrogens and 0 are deuteriums.

In the tables below, the ZeroOcc column contains the number of atoms modelled with zero occupancy, the AltConf column contains the number of residues with at least one atom in alternate conformation and the Trace column contains the number of residues modelled with at most 2 atoms.

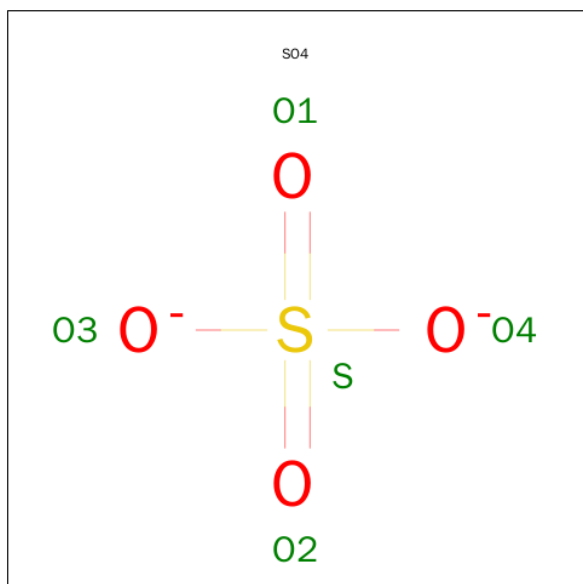
- Molecule 1 is a protein called Tryptase alpha/beta-1.

Mol	Chain	Residues	Atoms					ZeroOcc	AltConf	Trace
1	A	242	Total	C	N	O	S	0	3	0
			1927	1235	339	340	13			
1	B	243	Total	C	N	O	S	0	0	0
			1909	1221	337	339	12			

There are 2 discrepancies between the modelled and reference sequences:

Chain	Residue	Modelled	Actual	Comment	Reference
A	132	LYS	ASN	SEE REMARK 999	UNP Q15661
B	132	LYS	ASN	SEE REMARK 999	UNP Q15661

- Molecule 2 is SULFATE ION (three-letter code: SO₄) (formula: O₄S).



Mol	Chain	Residues	Atoms			ZeroOcc	AltConf
2	A	1	Total	O	S	0	0
			5	4	1		

Continued on next page...

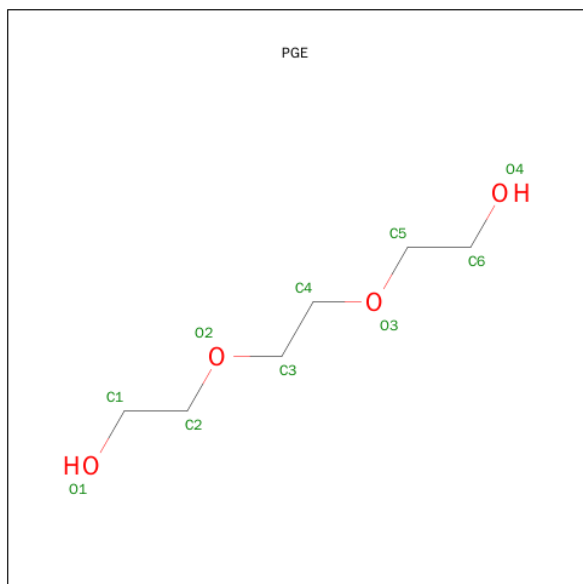
Continued from previous page...

Mol	Chain	Residues	Atoms			ZeroOcc	AltConf
2	A	1	Total	O	S	0	0
			5	4	1		
2	B	1	Total	O	S	0	0
			5	4	1		
2	B	1	Total	O	S	0	0
			5	4	1		
2	B	1	Total	O	S	0	0
			5	4	1		

- Molecule 3 is CHLORIDE ION (three-letter code: CL) (formula: Cl).

Mol	Chain	Residues	Atoms		ZeroOcc	AltConf
3	B	1	Total	Cl	0	0
			1	1		
3	A	1	Total	Cl	0	0
			1	1		

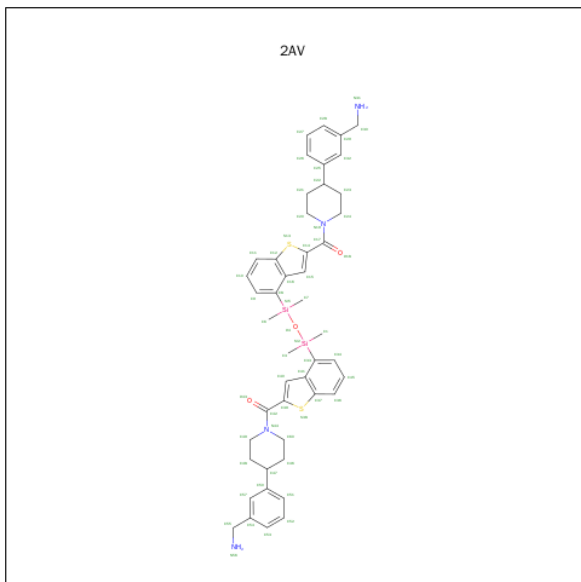
- Molecule 4 is TRIETHYLENE GLYCOL (three-letter code: PGE) (formula: C₆H₁₄O₄).



Mol	Chain	Residues	Atoms			ZeroOcc	AltConf
4	A	1	Total	C	O	0	0
			10	6	4		
4	B	1	Total	C	O	0	0
			10	6	4		

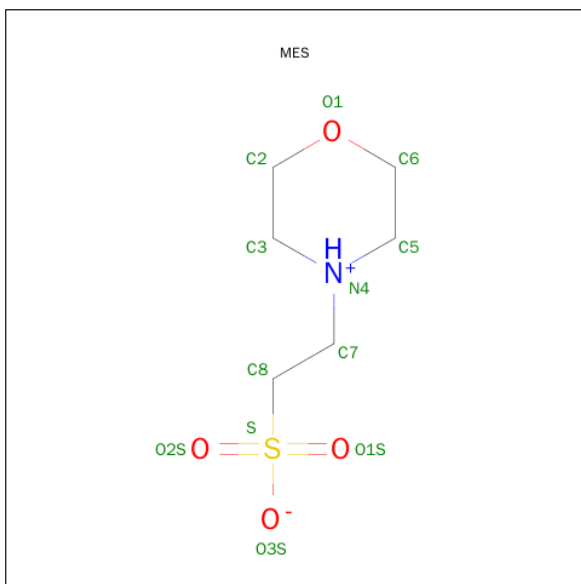
- Molecule 5 is [(1,1,3,3-TETRAMETHYLDISILOXANE-1,3-DIYL)DI-1-BENZOTHIENE

-4,2-DIYL]BIS({ 4-[3-(AMINOMETHYL)PHENYL]PIPERIDIN-1-YL}METHANONE)
(three-letter code: 2AV) (formula: $C_{46}H_{54}N_4O_3S_2Si_2$).



Mol	Chain	Residues	Atoms						ZeroOcc	AltConf
5	B	1	Total	C	N	O	S	Si	0	0
			57	46	4	3	2	2		

- Molecule 6 is 2-(N-MORPHOLINO)-ETHANESULFONIC ACID (three-letter code: MES) (formula: $C_6H_{13}NO_4S$).



Mol	Chain	Residues	Atoms					ZeroOcc	AltConf
6	B	1	Total	C	N	O	S	0	0
			12	6	1	4	1		

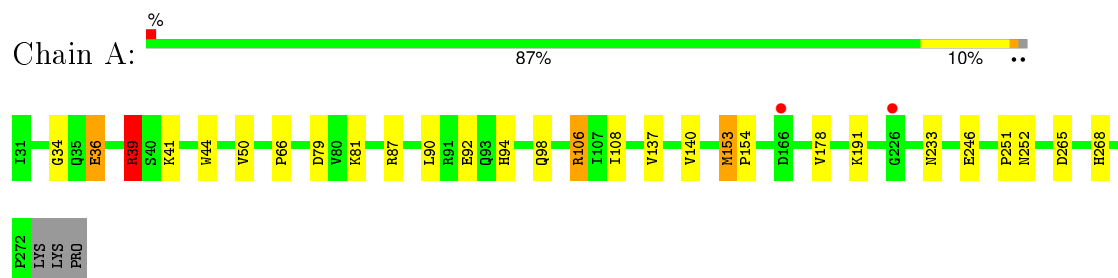
- Molecule 7 is water.

Mol	Chain	Residues	Atoms		ZeroOcc	AltConf
7	A	161	Total 161	O 161	0	0
7	B	148	Total 148	O 148	0	0

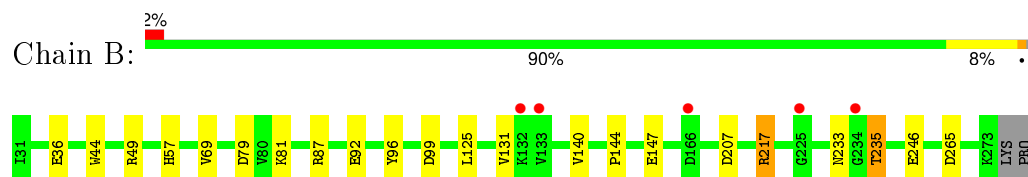
3 Residue-property plots [i](#)

These plots are drawn for all protein, RNA and DNA chains in the entry. The first graphic for a chain summarises the proportions of errors displayed in the second graphic. The second graphic shows the sequence view annotated by issues in geometry and electron density. Residues are color-coded according to the number of geometric quality criteria for which they contain at least one outlier: green = 0, yellow = 1, orange = 2 and red = 3 or more. A red dot above a residue indicates a poor fit to the electron density ($\text{RSRZ} > 2$). Stretches of 2 or more consecutive residues without any outlier are shown as a green connector. Residues present in the sample, but not in the model, are shown in grey.

- Molecule 1: Tryptase alpha/beta-1



- Molecule 1: Tryptase alpha/beta-1



4 Data and refinement statistics

Property	Value	Source
Space group	P 31 2 1	Depositor
Cell constants a, b, c, α , β , γ	78.31Å 78.31Å 165.72Å 90.00° 90.00° 120.00°	Depositor
Resolution (Å)	29.78 – 2.00 29.78 – 2.00	Depositor EDS
% Data completeness (in resolution range)	99.5 (29.78-2.00) 99.5 (29.78-2.00)	Depositor EDS
R_{merge}	0.09	Depositor
R_{sym}	(Not available)	Depositor
$\langle I/\sigma(I) \rangle$ ¹	2.39 (at 2.00Å)	Xtriage
Refinement program	REFMAC 5.7.0029	Depositor
R, R_{free}	0.184 , 0.233 0.191 , 0.239	Depositor DCC
R_{free} test set	2015 reflections (5.25%)	DCC
Wilson B-factor (Å ²)	28.0	Xtriage
Anisotropy	0.042	Xtriage
Bulk solvent k_{sol} (e/Å ³), B_{sol} (Å ²)	0.35 , 37.4	EDS
Estimated twinning fraction	0.024 for -h,-k,l	Xtriage
L-test for twinning ²	$\langle L \rangle = 0.50$, $\langle L^2 \rangle = 0.33$	Xtriage
Outliers	0 of 40362 reflections	Xtriage
F_o, F_c correlation	0.95	EDS
Total number of atoms	4261	wwPDB-VP
Average B, all atoms (Å ²)	31.0	wwPDB-VP

Xtriage's analysis on translational NCS is as follows: *The largest off-origin peak in the Patterson function is 3.52% of the height of the origin peak. No significant pseudotranslation is detected.*

¹Intensities estimated from amplitudes.

²Theoretical values of $\langle |L| \rangle$, $\langle L^2 \rangle$ for acentric reflections are 0.5, 0.375 respectively for untwinned datasets, and 0.333, 0.2 for perfectly twinned datasets.

5 Model quality

5.1 Standard geometry

Bond lengths and bond angles in the following residue types are not validated in this section: 2AV, PGE, SO4, MES, CL

The Z score for a bond length (or angle) is the number of standard deviations the observed value is removed from the expected value. A bond length (or angle) with $|Z| > 5$ is considered an outlier worth inspection. RMSZ is the root-mean-square of all Z scores of the bond lengths (or angles).

Mol	Chain	Bond lengths		Bond angles	
		RMSZ	$\# Z > 5$	RMSZ	$\# Z > 5$
1	A	1.00	1/2001 (0.0%)	0.96	7/2741 (0.3%)
1	B	0.94	0/1973	0.96	3/2705 (0.1%)
All	All	0.97	1/3974 (0.0%)	0.96	10/5446 (0.2%)

All (1) bond length outliers are listed below:

Mol	Chain	Res	Type	Atoms	Z	Observed(Å)	Ideal(Å)
1	A	36	GLU	CD-OE2	7.21	1.33	1.25

All (10) bond angle outliers are listed below:

Mol	Chain	Res	Type	Atoms	Z	Observed(°)	Ideal(°)
1	B	79	ASP	CB-CG-OD1	7.93	125.43	118.30
1	A	79	ASP	CB-CG-OD1	7.47	125.02	118.30
1	B	87	ARG	NE-CZ-NH2	-6.89	116.85	120.30
1	A	79	ASP	CB-CG-OD2	-6.58	112.38	118.30
1	A	87	ARG	NE-CZ-NH2	-5.88	117.36	120.30
1	A	106	ARG	NE-CZ-NH2	5.46	123.03	120.30
1	B	87	ARG	NE-CZ-NH1	5.35	122.97	120.30
1	A	265	ASP	CB-CG-OD1	5.09	122.88	118.30
1	A	39	ARG	NE-CZ-NH1	5.08	122.84	120.30
1	A	106	ARG	NE-CZ-NH1	-5.01	117.80	120.30

There are no chirality outliers.

There are no planarity outliers.

5.2 Too-close contacts ⓘ

In the following table, the Non-H and H(model) columns list the number of non-hydrogen atoms and hydrogen atoms in the chain respectively. The H(added) column lists the number of hydrogen atoms added and optimized by MolProbity. The Clashes column lists the number of clashes within the asymmetric unit, whereas Symm-Clashes lists symmetry related clashes.

Mol	Chain	Non-H	H(model)	H(added)	Clashes	Symm-Clashes
1	A	1927	0	1869	16	0
1	B	1909	0	1837	15	0
2	A	10	0	0	0	0
2	B	15	0	0	0	0
3	A	1	0	0	0	0
3	B	1	0	0	0	0
4	A	10	0	14	3	0
4	B	10	0	14	0	0
5	B	57	0	42	2	0
6	B	12	0	13	2	0
7	A	161	0	0	5	0
7	B	148	0	0	6	0
All	All	4261	0	3789	33	0

The all-atom clashscore is defined as the number of clashes found per 1000 atoms (including hydrogen atoms). The all-atom clashscore for this structure is 4.

All (33) close contacts within the same asymmetric unit are listed below, sorted by their clash magnitude.

Atom-1	Atom-2	Interatomic distance (Å)	Clash overlap (Å)
1:A:81:LYS:HB3	4:A:304:PGE:H6	1.51	0.91
1:B:81:LYS:NZ	7:B:496:HOH:O	2.20	0.74
1:B:207:ASP:OD2	6:B:307:MES:H52	1.89	0.72
1:A:81:LYS:HB3	4:A:304:PGE:C6	2.21	0.71
1:A:268:HIS:ND1	7:A:499:HOH:O	2.30	0.65
1:B:265:ASP:OD1	7:B:540:HOH:O	2.16	0.62
1:A:153:MET:HG3	1:A:154:PRO:HD2	1.82	0.61
1:A:90:LEU:HD13	1:A:137:VAL:HG11	1.87	0.57
1:A:246:GLU:OE1	7:A:450:HOH:O	2.18	0.54
1:B:92:GLU:OE2	1:B:99:ASP:OD1	2.29	0.51
1:B:144:PRO:HD2	1:B:147:GLU:HB2	1.92	0.51
1:A:50:VAL:HG23	4:A:304:PGE:H42	1.92	0.50
1:B:246:GLU:OE2	7:B:480:HOH:O	2.20	0.50
5:B:301:2AV:C7	5:B:301:2AV:H38	2.41	0.50
1:B:96:TYR:O	7:B:443:HOH:O	2.19	0.50

Continued on next page...

Continued from previous page...

Atom-1	Atom-2	Interatomic distance (Å)	Clash overlap (Å)
1:B:44:TRP:CD2	1:B:140:VAL:HB	2.47	0.50
1:B:49:ARG:HD3	1:B:57:HIS:HA	1.96	0.47
1:B:36:GLU:OE1	7:B:438:HOH:O	2.20	0.47
1:B:207:ASP:CG	6:B:307:MES:H52	2.34	0.47
1:B:233:ASN:O	1:B:235:THR:HG22	2.17	0.45
1:A:81:LYS:HE2	7:A:552:HOH:O	2.17	0.45
1:A:34:GLY:CA	1:A:178:VAL:HG23	2.48	0.44
1:B:69:VAL:HB	1:B:125:LEU:HB2	2.00	0.44
1:A:81:LYS:HB2	7:A:553:HOH:O	2.18	0.43
5:B:301:2AV:H2	5:B:301:2AV:C40	2.48	0.43
1:B:44:TRP:CG	1:B:140:VAL:HB	2.54	0.43
1:A:251:PRO:O	1:A:252:ASN:HB2	2.19	0.42
1:A:39:ARG:HB2	1:A:39:ARG:HH11	1.84	0.42
1:A:36:GLU:OE1	7:A:492:HOH:O	2.22	0.42
1:A:106:ARG:CZ	1:A:108:ILE:HD11	2.51	0.41
1:A:92:GLU:HG2	1:A:94:HIS:O	2.20	0.40
1:B:217:ARG:HD3	7:B:466:HOH:O	2.21	0.40
1:A:44:TRP:CG	1:A:140:VAL:HB	2.57	0.40

There are no symmetry-related clashes.

5.3 Torsion angles

5.3.1 Protein backbone

In the following table, the Percentiles column shows the percent Ramachandran outliers of the chain as a percentile score with respect to all X-ray entries followed by that with respect to entries of similar resolution.

The Analysed column shows the number of residues for which the backbone conformation was analysed, and the total number of residues.

Mol	Chain	Analysed	Favoured	Allowed	Outliers	Percentiles	
1	A	243/245 (99%)	236 (97%)	7 (3%)	0	100	100
1	B	241/245 (98%)	233 (97%)	8 (3%)	0	100	100
All	All	484/490 (99%)	469 (97%)	15 (3%)	0	100	100

There are no Ramachandran outliers to report.

5.3.2 Protein sidechains [i](#)

In the following table, the Percentiles column shows the percent sidechain outliers of the chain as a percentile score with respect to all X-ray entries followed by that with respect to entries of similar resolution.

The Analysed column shows the number of residues for which the sidechain conformation was analysed, and the total number of residues.

Mol	Chain	Analysed	Rotameric	Outliers	Percentiles	
1	A	210/210 (100%)	203 (97%)	7 (3%)	45	43
1	B	206/210 (98%)	203 (98%)	3 (2%)	72	75
All	All	416/420 (99%)	406 (98%)	10 (2%)	57	58

All (10) residues with a non-rotameric sidechain are listed below:

Mol	Chain	Res	Type
1	A	39	ARG
1	A	41	LYS
1	A	66	PRO
1	A	98	GLN
1	A	153	MET
1	A	191	LYS
1	A	233	ASN
1	B	131	VAL
1	B	217	ARG
1	B	235	THR

Some sidechains can be flipped to improve hydrogen bonding and reduce clashes. There are no such sidechains identified.

5.3.3 RNA [i](#)

There are no RNA molecules in this entry.

5.4 Non-standard residues in protein, DNA, RNA chains [i](#)

There are no non-standard protein/DNA/RNA residues in this entry.

5.5 Carbohydrates [i](#)

There are no carbohydrates in this entry.

5.6 Ligand geometry

Of 11 ligands modelled in this entry, 2 are monoatomic - leaving 9 for Mogul analysis.

In the following table, the Counts columns list the number of bonds (or angles) for which Mogul statistics could be retrieved, the number of bonds (or angles) that are observed in the model and the number of bonds (or angles) that are defined in the chemical component dictionary. The Link column lists molecule types, if any, to which the group is linked. The Z score for a bond length (or angle) is the number of standard deviations the observed value is removed from the expected value. A bond length (or angle) with $|Z| > 2$ is considered an outlier worth inspection. RMSZ is the root-mean-square of all Z scores of the bond lengths (or angles).

Mol	Type	Chain	Res	Link	Bond lengths			Bond angles		
					Counts	RMSZ	# Z > 2	Counts	RMSZ	# Z > 2
2	SO4	A	301	-	4,4,4	1.02	0	6,6,6	0.43	0
2	SO4	A	302	-	4,4,4	0.76	0	6,6,6	0.75	0
4	PGE	A	304	-	9,9,9	0.73	0	8,8,8	0.86	0
5	2AV	B	301	-	52,64,64	1.23	4 (7%)	79,95,95	2.03	22 (27%)
2	SO4	B	302	-	4,4,4	0.89	0	6,6,6	0.56	0
2	SO4	B	303	-	4,4,4	0.55	0	6,6,6	0.51	0
2	SO4	B	304	-	4,4,4	0.66	0	6,6,6	0.32	0
4	PGE	B	306	-	9,9,9	0.66	0	8,8,8	0.78	0
6	MES	B	307	-	11,12,12	0.96	1 (9%)	14,16,16	7.94	9 (64%)

In the following table, the Chirals column lists the number of chiral outliers, the number of chiral centers analysed, the number of these observed in the model and the number defined in the chemical component dictionary. Similar counts are reported in the Torsion and Rings columns. '-' means no outliers of that kind were identified.

Mol	Type	Chain	Res	Link	Chirals	Torsions	Rings
2	SO4	A	301	-	-	0/0/0/0	0/0/0/0
2	SO4	A	302	-	-	0/0/0/0	0/0/0/0
4	PGE	A	304	-	-	0/7/7/7	0/0/0/0
5	2AV	B	301	-	-	0/38/66/66	0/8/8/8
2	SO4	B	302	-	-	0/0/0/0	0/0/0/0
2	SO4	B	303	-	-	0/0/0/0	0/0/0/0
2	SO4	B	304	-	-	0/0/0/0	0/0/0/0
4	PGE	B	306	-	-	0/7/7/7	0/0/0/0
6	MES	B	307	-	-	0/6/14/14	0/1/1/1

All (5) bond length outliers are listed below:

Mol	Chain	Res	Type	Atoms	Z	Observed(Å)	Ideal(Å)
5	B	301	2AV	C8-C16	-3.77	1.38	1.44
5	B	301	2AV	C33-C41	-2.94	1.39	1.44

Continued on next page...

Continued from previous page...

Mol	Chain	Res	Type	Atoms	Z	Observed(Å)	Ideal(Å)
5	B	301	2AV	C10-C11	2.15	1.41	1.36
5	B	301	2AV	C14-S13	2.23	1.75	1.72
6	B	307	MES	C7-N4	2.25	1.52	1.47

All (31) bond angle outliers are listed below:

Mol	Chain	Res	Type	Atoms	Z	Observed(°)	Ideal(°)
6	B	307	MES	O1S-S-C8	-16.50	92.82	106.91
5	B	301	2AV	C23-C24-N19	-8.07	99.37	111.07
6	B	307	MES	O3S-S-O1S	-7.55	94.04	111.61
5	B	301	2AV	C48-C49-N44	-5.56	103.02	111.07
6	B	307	MES	O2S-S-O1S	-5.38	93.89	113.48
5	B	301	2AV	SI5-C8-C16	-3.59	116.12	125.34
5	B	301	2AV	O4-SI5-C8	-3.39	101.09	107.28
5	B	301	2AV	SI5-O4-SI2	-3.03	127.63	149.12
5	B	301	2AV	C20-C21-C22	-3.00	107.14	110.97
5	B	301	2AV	C1-SI2-C33	-2.99	105.87	109.98
5	B	301	2AV	C15-C16-C8	-2.86	126.81	136.57
5	B	301	2AV	C46-C60-N44	-2.59	107.32	111.07
5	B	301	2AV	O18-C17-C14	-2.58	113.08	118.84
5	B	301	2AV	C40-C41-C33	-2.47	128.14	136.57
5	B	301	2AV	O4-SI5-C7	-2.42	104.80	109.02
5	B	301	2AV	C46-C47-C50	-2.34	107.91	112.89
5	B	301	2AV	O4-SI2-C1	-2.16	105.24	109.02
5	B	301	2AV	SI2-C33-C41	-2.09	119.97	125.34
5	B	301	2AV	C6-SI5-C8	2.06	112.80	109.98
6	B	307	MES	C7-N4-C3	2.23	116.99	111.27
5	B	301	2AV	O4-SI2-C33	2.29	111.46	107.28
5	B	301	2AV	C32-C25-C22	2.54	124.62	120.89
5	B	301	2AV	C15-C16-C12	2.55	113.09	107.59
5	B	301	2AV	C3-SI2-C33	2.68	113.66	109.98
6	B	307	MES	C6-O1-C2	2.71	119.01	109.89
6	B	307	MES	O3S-S-O2S	2.74	118.00	111.61
5	B	301	2AV	C9-C8-C16	2.80	119.95	117.46
6	B	307	MES	C5-N4-C3	3.00	115.39	108.90
6	B	307	MES	C6-C5-N4	3.75	115.80	110.12
5	B	301	2AV	O4-SI5-C6	5.49	118.61	109.02
6	B	307	MES	O2S-S-C8	21.85	125.55	106.91

There are no chirality outliers.

There are no torsion outliers.

There are no ring outliers.

3 monomers are involved in 7 short contacts:

Mol	Chain	Res	Type	Clashes	Symm-Clashes
4	A	304	PGE	3	0
5	B	301	2AV	2	0
6	B	307	MES	2	0

5.7 Other polymers [i](#)

There are no such residues in this entry.

5.8 Polymer linkage issues [i](#)

There are no chain breaks in this entry.

6 Fit of model and data [i](#)

6.1 Protein, DNA and RNA chains [i](#)

In the following table, the column labelled ‘#RSRZ> 2’ contains the number (and percentage) of RSRZ outliers, followed by percent RSRZ outliers for the chain as percentile scores relative to all X-ray entries and entries of similar resolution. The OWAB column contains the minimum, median, 95th percentile and maximum values of the occupancy-weighted average B-factor per residue. The column labelled ‘Q< 0.9’ lists the number of (and percentage) of residues with an average occupancy less than 0.9.

Mol	Chain	Analysed	<RSRZ>	#RSRZ>2	OWAB(Å ²)	Q<0.9
1	A	242/245 (98%)	-0.39	2 (0%) 87 88	21, 28, 43, 53	0
1	B	243/245 (99%)	-0.27	5 (2%) 67 67	21, 29, 49, 72	0
All	All	485/490 (98%)	-0.33	7 (1%) 78 78	21, 29, 47, 72	0

All (7) RSRZ outliers are listed below:

Mol	Chain	Res	Type	RSRZ
1	B	133	VAL	2.6
1	B	132	LYS	2.5
1	B	166	ASP	2.5
1	B	234	GLY	2.3
1	A	166	ASP	2.2
1	A	226	GLY	2.1
1	B	225	GLY	2.0

6.2 Non-standard residues in protein, DNA, RNA chains [i](#)

There are no non-standard protein/DNA/RNA residues in this entry.

6.3 Carbohydrates [i](#)

There are no carbohydrates in this entry.

6.4 Ligands [i](#)

In the following table, the Atoms column lists the number of modelled atoms in the group and the number defined in the chemical component dictionary. LLDF column lists the quality of electron density of the group with respect to its neighbouring residues in protein, DNA or RNA chains. The B-factors column lists the minimum, median, 95th percentile and maximum values of B factors

of atoms in the group. The column labelled 'Q < 0.9' lists the number of atoms with occupancy less than 0.9.

Mol	Type	Chain	Res	Atoms	RSCC	RSR	LLDF	B-factors(Å ²)	Q<0.9
4	PGE	B	306	10/10	0.82	0.22	2.68	48,56,63,67	0
2	SO4	A	301	5/5	0.95	0.21	2.49	45,45,59,59	0
4	PGE	A	304	10/10	0.83	0.14	2.27	45,56,59,64	0
3	CL	A	303	1/1	0.93	0.12	-0.09	52,52,52,52	0
6	MES	B	307	12/12	0.98	0.09	-0.21	23,33,36,37	0
5	2AV	B	301	57/57	0.95	0.09	-0.49	22,30,58,65	0
2	SO4	A	302	5/5	0.97	0.09	-0.75	37,38,44,45	0
2	SO4	B	302	5/5	0.98	0.07	-1.30	34,37,41,45	0
3	CL	B	305	1/1	0.96	0.15	-	58,58,58,58	0
2	SO4	B	303	5/5	0.96	0.14	-	51,53,57,63	0
2	SO4	B	304	5/5	0.94	0.11	-	53,54,60,61	0

6.5 Other polymers [i](#)

There are no such residues in this entry.