



Full wwPDB X-ray Structure Validation Report ⓘ

Feb 1, 2016 – 06:47 PM GMT

PDB ID : 4MR7
Title : Crystal structure of the extracellular domain of human GABA(B) receptor bound to the antagonist CGP54626
Authors : Geng, Y.; Bush, M.; Mosyak, L.; Wang, F.; Fan, Q.R.
Deposited on : 2013-09-17
Resolution : 2.15 Å(reported)

This is a Full wwPDB X-ray Structure Validation Report for a publicly released PDB entry.
We welcome your comments at validation@mail.wwpdb.org
A user guide is available at
<http://wwpdb.org/validation/2016/XrayValidationReportHelp>
with specific help available everywhere you see the ⓘ symbol.

The following versions of software and data (see [references ⓘ](#)) were used in the production of this report:

MolProbity : 4.02b-467
Mogul : 1.7 (RC4), CSD as536be (2015)
Xtriage (Phenix) : 1.9-1692
EDS : rb-20026688
Percentile statistics : 20151230.v01 (using entries in the PDB archive December 30th 2015)
Refmac : 5.8.0135
CCP4 : 6.5.0
Ideal geometry (proteins) : Engh & Huber (2001)
Ideal geometry (DNA, RNA) : Parkinson et al. (1996)
Validation Pipeline (wwPDB-VP) : trunk26865

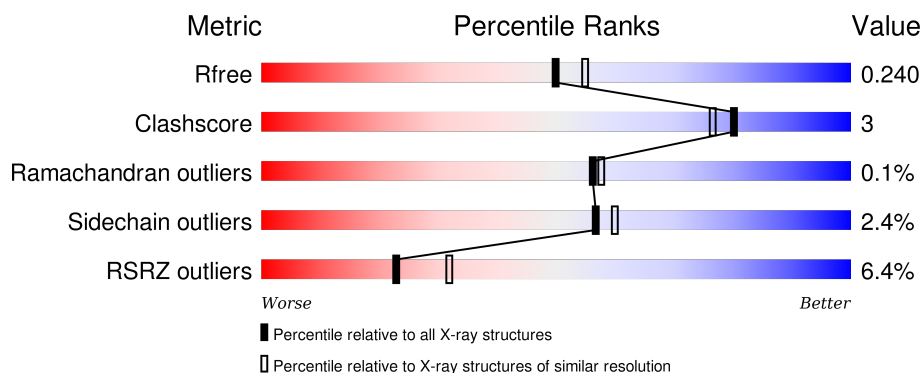
1 Overall quality at a glance

The following experimental techniques were used to determine the structure:

X-RAY DIFFRACTION

The reported resolution of this entry is 2.15 Å.

Percentile scores (ranging between 0-100) for global validation metrics of the entry are shown in the following graphic. The table shows the number of entries on which the scores are based.



Metric	Whole archive (#Entries)	Similar resolution (#Entries, resolution range(Å))
R_{free}	91344	1045 (2.16-2.16)
Clashscore	102246	1152 (2.16-2.16)
Ramachandran outliers	100387	1131 (2.16-2.16)
Sidechain outliers	100360	1131 (2.16-2.16)
RSRZ outliers	91569	1050 (2.16-2.16)

The table below summarises the geometric issues observed across the polymeric chains and their fit to the electron density. The red, orange, yellow and green segments on the lower bar indicate the fraction of residues that contain outliers for ≥ 3 , 2, 1 and 0 types of geometric quality criteria. A grey segment represents the fraction of residues that are not modelled. The numeric value for each fraction is indicated below the corresponding segment, with a dot representing fractions $\leq 5\%$. The upper red bar (where present) indicates the fraction of residues that have poor fit to the electron density. The numeric value is given above the bar.

Mol	Chain	Length	Quality of chain
1	A	420	<div> <div>8%</div> <div> <div></div> <div>83%</div> <div>13%</div> <div>.</div> </div> </div>
2	B	433	<div> <div>5%</div> <div> <div></div> <div>87%</div> <div>6%</div> <div>7%</div> </div> </div>

2 Entry composition

There are 7 unique types of molecules in this entry. The entry contains 7148 atoms, of which 0 are hydrogens and 0 are deuteriums.

In the tables below, the ZeroOcc column contains the number of atoms modelled with zero occupancy, the AltConf column contains the number of residues with at least one atom in alternate conformation and the Trace column contains the number of residues modelled with at most 2 atoms.

- Molecule 1 is a protein called Gamma-aminobutyric acid type B receptor subunit 1.

Mol	Chain	Residues	Atoms					ZeroOcc	AltConf	Trace
			Total	C	N	O	S			
1	A	407	3271	2090	551	616	14	0	0	0

There are 8 discrepancies between the modelled and reference sequences:

Chain	Residue	Modelled	Actual	Comment	Reference
A	460	ASP	-	EXPRESSION TAG	UNP Q9UBS5
A	461	TYR	-	EXPRESSION TAG	UNP Q9UBS5
A	462	LYS	-	EXPRESSION TAG	UNP Q9UBS5
A	463	ASP	-	EXPRESSION TAG	UNP Q9UBS5
A	464	ASP	-	EXPRESSION TAG	UNP Q9UBS5
A	465	ASP	-	EXPRESSION TAG	UNP Q9UBS5
A	466	ASP	-	EXPRESSION TAG	UNP Q9UBS5
A	467	LYS	-	EXPRESSION TAG	UNP Q9UBS5

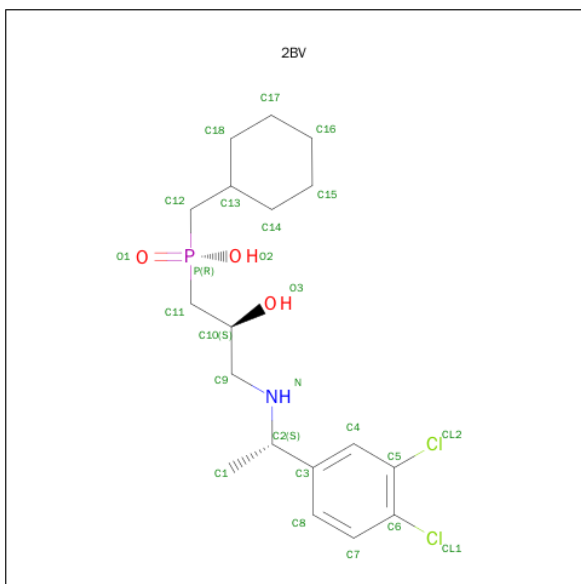
- Molecule 2 is a protein called Gamma-aminobutyric acid type B receptor subunit 2.

Mol	Chain	Residues	Atoms					ZeroOcc	AltConf	Trace
			Total	C	N	O	S			
2	B	403	3214	2052	543	604	15	0	0	0

There are 8 discrepancies between the modelled and reference sequences:

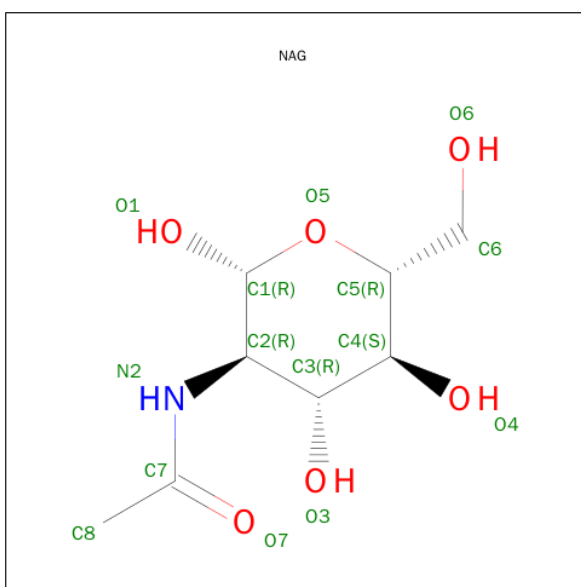
Chain	Residue	Modelled	Actual	Comment	Reference
B	467	ASP	-	EXPRESSION TAG	UNP O75899
B	468	TYR	-	EXPRESSION TAG	UNP O75899
B	469	LYS	-	EXPRESSION TAG	UNP O75899
B	470	ASP	-	EXPRESSION TAG	UNP O75899
B	471	ASP	-	EXPRESSION TAG	UNP O75899
B	472	ASP	-	EXPRESSION TAG	UNP O75899
B	473	ASP	-	EXPRESSION TAG	UNP O75899
B	474	LYS	-	EXPRESSION TAG	UNP O75899

- Molecule 3 is (R)-(CYCLOHEXYLMETHYL)[(2S)-3-{[(1S)-1-(3,4-DICHLOROPHENYL)ETHYL]AMINO}-2-HYDROXYPROPYL]PHOSPHINIC ACID (three-letter code: 2BV) (formula: $C_{18}H_{28}Cl_2NO_3P$).



Mol	Chain	Residues	Atoms					ZeroOcc	AltConf
			Total	C	Cl	N	O	P	
3	A	1	25	18	2	1	3	1	0

- Molecule 4 is SUGAR (N-ACETYL-D-GLUCOSAMINE) (three-letter code: NAG) (formula: $C_8H_{15}NO_6$).



Mol	Chain	Residues	Atoms				ZeroOcc	AltConf
4	A	1	Total	C	N	O	0	0
			14	8	1	5		

- Molecule 5 is a polymer of unknown type called SUGAR (6-MER).

Mol	Chain	Residues	Atoms				ZeroOcc	AltConf
5	A	6	Total	C	N	O	0	0
			71	40	2	29		

- Molecule 6 is a polymer of unknown type called SUGAR (4-MER).

Mol	Chain	Residues	Atoms				ZeroOcc	AltConf
6	B	4	Total	C	N	O	0	0
			49	28	2	19		

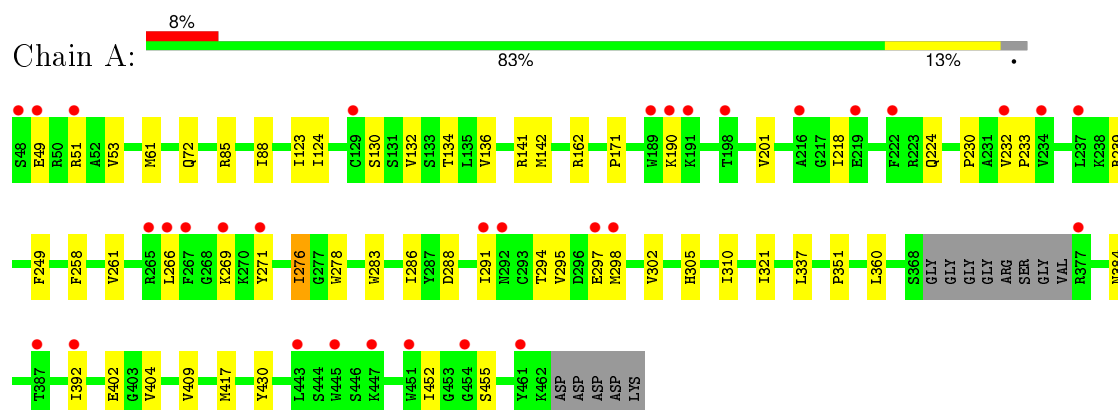
- Molecule 7 is water.

Mol	Chain	Residues	Atoms		ZeroOcc	AltConf
7	A	218	Total	O	0	0
			218	218		
7	B	286	Total	O	0	0
			286	286		

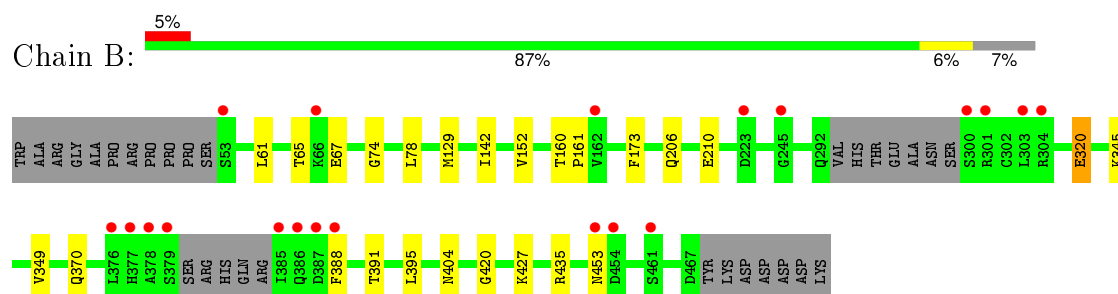
3 Residue-property plots

These plots are drawn for all protein, RNA and DNA chains in the entry. The first graphic for a chain summarises the proportions of errors displayed in the second graphic. The second graphic shows the sequence view annotated by issues in geometry and electron density. Residues are color-coded according to the number of geometric quality criteria for which they contain at least one outlier: green = 0, yellow = 1, orange = 2 and red = 3 or more. A red dot above a residue indicates a poor fit to the electron density ($\text{RSRZ} > 2$). Stretches of 2 or more consecutive residues without any outlier are shown as a green connector. Residues present in the sample, but not in the model, are shown in grey.

- Molecule 1: Gamma-aminobutyric acid type B receptor subunit 1



- Molecule 2: Gamma-aminobutyric acid type B receptor subunit 2



4 Data and refinement statistics

Property	Value	Source
Space group	P 1 21 1	Depositor
Cell constants a, b, c, α , β , γ	69.67Å 113.21Å 73.46Å 90.00° 97.11° 90.00°	Depositor
Resolution (Å)	21.67 – 2.15 47.32 – 2.15	Depositor EDS
% Data completeness (in resolution range)	86.0 (21.67-2.15) 86.3 (47.32-2.15)	Depositor EDS
R_{merge}	0.04	Depositor
R_{sym}	0.04	Depositor
$\langle I/\sigma(I) \rangle$ ¹	3.45 (at 2.16Å)	Xtriage
Refinement program	BUSTER	Depositor
R, R_{free}	0.203 , 0.240 0.205 , 0.240	Depositor DCC
R_{free} test set	2709 reflections (5.41%)	DCC
Wilson B-factor (Å ²)	26.5	Xtriage
Anisotropy	0.137	Xtriage
Bulk solvent k_{sol} (e/Å ³), B_{sol} (Å ²)	0.33 , 56.4	EDS
Estimated twinning fraction	No twinning to report.	Xtriage
L-test for twinning ²	$\langle L \rangle = 0.50$, $\langle L^2 \rangle = 0.33$	Xtriage
Outliers	0 of 52853 reflections	Xtriage
F_o, F_c correlation	0.93	EDS
Total number of atoms	7148	wwPDB-VP
Average B, all atoms (Å ²)	39.0	wwPDB-VP

Xtriage's analysis on translational NCS is as follows: *The largest off-origin peak in the Patterson function is 4.29% of the height of the origin peak. No significant pseudotranslation is detected.*

¹Intensities estimated from amplitudes.

²Theoretical values of $\langle |L| \rangle$, $\langle L^2 \rangle$ for acentric reflections are 0.5, 0.375 respectively for untwinned datasets, and 0.333, 0.2 for perfectly twinned datasets.

5 Model quality

5.1 Standard geometry

Bond lengths and bond angles in the following residue types are not validated in this section: FUC, 2BV, NAG, MAN

The Z score for a bond length (or angle) is the number of standard deviations the observed value is removed from the expected value. A bond length (or angle) with $|Z| > 5$ is considered an outlier worth inspection. RMSZ is the root-mean-square of all Z scores of the bond lengths (or angles).

Mol	Chain	Bond lengths		Bond angles	
		RMSZ	$\# Z > 5$	RMSZ	$\# Z > 5$
1	A	0.50	0/3354	0.67	0/4547
2	B	0.53	0/3287	0.65	0/4449
All	All	0.51	0/6641	0.66	0/8996

There are no bond length outliers.

There are no bond angle outliers.

There are no chirality outliers.

There are no planarity outliers.

5.2 Too-close contacts

In the following table, the Non-H and H(model) columns list the number of non-hydrogen atoms and hydrogen atoms in the chain respectively. The H(added) column lists the number of hydrogen atoms added and optimized by MolProbity. The Clashes column lists the number of clashes within the asymmetric unit, whereas Symm-Clashes lists symmetry related clashes.

Mol	Chain	Non-H	H(model)	H(added)	Clashes	Symm-Clashes
1	A	3271	0	3193	31	0
2	B	3214	0	3161	11	0
3	A	25	0	28	0	0
4	A	14	0	13	1	0
5	A	71	0	61	1	0
6	B	49	0	43	2	0
7	A	218	0	0	3	0
7	B	286	0	0	1	0
All	All	7148	0	6499	44	0

The all-atom clashscore is defined as the number of clashes found per 1000 atoms (including hydrogen atoms). The all-atom clashscore for this structure is 3.

All (44) close contacts within the same asymmetric unit are listed below, sorted by their clash magnitude.

Atom-1	Atom-2	Interatomic distance (Å)	Clash overlap (Å)
1:A:201:VAL:HG11	7:A:605:HOH:O	1.84	0.77
2:B:320:GLU:HG2	2:B:427:LYS:HB2	1.65	0.76
1:A:232:VAL:HG23	1:A:233:PRO:HD3	1.76	0.66
1:A:224:GLN:HB3	1:A:233:PRO:HB3	1.78	0.66
1:A:130:SER:O	1:A:134:THR:HG23	1.99	0.62
1:A:288:ASP:HB3	1:A:291:ILE:HG12	1.83	0.61
1:A:288:ASP:O	1:A:291:ILE:HG13	2.00	0.60
1:A:321:ILE:HG12	1:A:402:GLU:O	2.01	0.60
1:A:291:ILE:HD13	1:A:298:MET:HE1	1.85	0.59
1:A:302:VAL:O	1:A:305:HIS:HD2	1.86	0.58
1:A:294:THR:OG1	1:A:297:GLU:HG2	2.05	0.57
2:B:65:THR:HG22	2:B:67:GLU:H	1.70	0.57
2:B:404:ASN:HD22	6:B:501:NAG:H83	1.70	0.57
5:A:506:MAN:H5	7:A:742:HOH:O	2.05	0.56
1:A:88:ILE:CD1	4:A:502:NAG:H82	2.37	0.55
1:A:302:VAL:O	1:A:305:HIS:CD2	2.60	0.54
2:B:129:MET:HB2	2:B:152:VAL:O	2.09	0.52
1:A:409:VAL:HG23	1:A:417:MET:HB2	1.90	0.52
2:B:206:GLN:HE21	2:B:210:GLU:HG2	1.75	0.51
1:A:283:TRP:HA	1:A:286:ILE:HD12	1.91	0.50
1:A:61:MET:CE	1:A:72:GLN:HE21	2.24	0.50
1:A:171:PRO:HG2	1:A:310:ILE:HG21	1.94	0.49
2:B:61:LEU:HD13	2:B:142:ILE:HD13	1.96	0.48
1:A:232:VAL:CG2	1:A:233:PRO:HD3	2.41	0.48
1:A:258:PHE:HA	1:A:261:VAL:HB	1.96	0.47
1:A:124:ILE:HD13	1:A:360:LEU:HD13	1.95	0.47
2:B:173:PHE:CD2	2:B:420:GLY:HA2	2.50	0.47
2:B:453:ASN:HA	7:B:755:HOH:O	2.14	0.46
2:B:388:PHE:HB2	2:B:395:LEU:HD23	1.97	0.46
1:A:49:GLU:HG2	1:A:51:ARG:NH1	2.30	0.46
1:A:53:VAL:HG13	1:A:123:ILE:HG12	1.98	0.45
1:A:269:LYS:HE2	1:A:452:ILE:HG22	1.99	0.45
1:A:190:LYS:HA	1:A:218:ILE:HG12	1.99	0.45
1:A:61:MET:CE	1:A:72:GLN:NE2	2.81	0.43
1:A:276:ILE:HD12	1:A:278:TRP:CZ2	2.54	0.43
1:A:141:ARG:HG3	1:A:142:MET:HE3	2.00	0.42
1:A:295:VAL:HG23	7:A:816:HOH:O	2.18	0.42
2:B:160:THR:HA	2:B:161:PRO:HD3	1.93	0.42
1:A:269:LYS:HG3	1:A:452:ILE:HB	2.00	0.42
1:A:132:VAL:O	1:A:136:VAL:HG13	2.20	0.42

Continued on next page...

Continued from previous page...

Atom-1	Atom-2	Interatomic distance (Å)	Clash overlap (Å)
6:B:502:NAG:O3	6:B:503:MAN:H2	2.19	0.42
1:A:351:PRO:HB3	1:A:404:VAL:HG23	2.02	0.42
1:A:305:HIS:HE1	1:A:430:TYR:OH	2.03	0.41
2:B:74:GLY:O	2:B:78:LEU:HG	2.21	0.41

There are no symmetry-related clashes.

5.3 Torsion angles [i](#)

5.3.1 Protein backbone [i](#)

In the following table, the Percentiles column shows the percent Ramachandran outliers of the chain as a percentile score with respect to all X-ray entries followed by that with respect to entries of similar resolution.

The Analysed column shows the number of residues for which the backbone conformation was analysed, and the total number of residues.

Mol	Chain	Analysed	Favoured	Allowed	Outliers	Percentiles	
1	A	403/420 (96%)	391 (97%)	11 (3%)	1 (0%)	52	51
2	B	397/433 (92%)	388 (98%)	9 (2%)	0	100	100
All	All	800/853 (94%)	779 (97%)	20 (2%)	1 (0%)	56	57

All (1) Ramachandran outliers are listed below:

Mol	Chain	Res	Type
1	A	230	PRO

5.3.2 Protein sidechains [i](#)

In the following table, the Percentiles column shows the percent sidechain outliers of the chain as a percentile score with respect to all X-ray entries followed by that with respect to entries of similar resolution.

The Analysed column shows the number of residues for which the sidechain conformation was analysed, and the total number of residues.

Mol	Chain	Analysed	Rotameric	Outliers	Percentiles	
1	A	354/362 (98%)	343 (97%)	11 (3%)	47	47

Continued on next page...

Continued from previous page...

Mol	Chain	Analysed	Rotameric	Outliers	Percentiles	
2	B	349/375 (93%)	343 (98%)	6 (2%)	68	74
All	All	703/737 (95%)	686 (98%)	17 (2%)	57	60

All (17) residues with a non-rotameric sidechain are listed below:

Mol	Chain	Res	Type
1	A	85	ARG
1	A	162	ARG
1	A	239	ARG
1	A	249	PHE
1	A	266	LEU
1	A	271	TYR
1	A	276	ILE
1	A	337	LEU
1	A	384	ASN
1	A	392	ILE
1	A	455	SER
2	B	320	GLU
2	B	345	LYS
2	B	349	VAL
2	B	370	GLN
2	B	391	THR
2	B	435	ARG

Some sidechains can be flipped to improve hydrogen bonding and reduce clashes. All (9) such sidechains are listed below:

Mol	Chain	Res	Type
1	A	72	GLN
1	A	98	HIS
1	A	144	ASN
1	A	196	GLN
1	A	236	ASN
1	A	305	HIS
1	A	327	GLN
2	B	150	ASN
2	B	206	GLN

5.3.3 RNA ⓘ

There are no RNA molecules in this entry.

5.4 Non-standard residues in protein, DNA, RNA chains ⓘ

There are no non-standard protein/DNA/RNA residues in this entry.

5.5 Carbohydrates ⓘ

10 carbohydrates are modelled in this entry.

In the following table, the Counts columns list the number of bonds (or angles) for which Mogul statistics could be retrieved, the number of bonds (or angles) that are observed in the model and the number of bonds (or angles) that are defined in the chemical component dictionary. The Link column lists molecule types, if any, to which the group is linked. The Z score for a bond length (or angle) is the number of standard deviations the observed value is removed from the expected value. A bond length (or angle) with $|Z| > 2$ is considered an outlier worth inspection. RMSZ is the root-mean-square of all Z scores of the bond lengths (or angles).

Mol	Type	Chain	Res	Link	Bond lengths			Bond angles		
					Counts	RMSZ	$\# Z > 2$	Counts	RMSZ	$\# Z > 2$
5	NAG	A	503	1,5	14,14,15	0.33	0	15,19,21	2.64	1 (6%)
5	NAG	A	504	5	14,14,15	0.33	0	15,19,21	2.29	2 (13%)
5	MAN	A	505	5	11,11,12	0.32	0	14,15,17	2.10	5 (35%)
5	MAN	A	506	5	11,11,12	0.32	0	14,15,17	1.19	1 (7%)
5	MAN	A	507	5	11,11,12	0.49	0	14,15,17	1.26	2 (14%)
5	FUC	A	508	5	10,10,11	0.62	0	14,14,16	2.68	2 (14%)
6	NAG	B	501	2,6	14,14,15	0.30	0	15,19,21	0.53	0
6	NAG	B	502	6	14,14,15	0.26	0	15,19,21	0.84	0
6	MAN	B	503	6	11,11,12	0.44	0	14,15,17	1.50	2 (14%)
6	FUC	B	504	6	10,10,11	0.47	0	14,14,16	1.03	1 (7%)

In the following table, the Chirals column lists the number of chiral outliers, the number of chiral centers analysed, the number of these observed in the model and the number defined in the chemical component dictionary. Similar counts are reported in the Torsion and Rings columns. '-' means no outliers of that kind were identified.

Mol	Type	Chain	Res	Link	Chirals	Torsions	Rings
5	NAG	A	503	1,5	-	0/6/23/26	0/1/1/1
5	NAG	A	504	5	-	0/6/23/26	0/1/1/1
5	MAN	A	505	5	-	0/2/19/22	0/1/1/1
5	MAN	A	506	5	-	0/2/19/22	0/1/1/1
5	MAN	A	507	5	-	0/2/19/22	0/1/1/1
5	FUC	A	508	5	-	0/0/17/20	0/1/1/1
6	NAG	B	501	2,6	-	0/6/23/26	0/1/1/1
6	NAG	B	502	6	-	0/6/23/26	0/1/1/1

Continued on next page...

Continued from previous page...

Mol	Type	Chain	Res	Link	Chirals	Torsions	Rings
6	MAN	B	503	6	-	0/2/19/22	0/1/1/1
6	FUC	B	504	6	-	0/0/17/20	0/1/1/1

There are no bond length outliers.

All (16) bond angle outliers are listed below:

Mol	Chain	Res	Type	Atoms	Z	Observed(°)	Ideal(°)
5	A	506	MAN	C1-C2-C3	-2.70	106.34	109.54
5	A	505	MAN	O3-C3-C4	-2.46	104.80	110.34
5	A	505	MAN	O3-C3-C2	-2.27	105.89	110.00
5	A	507	MAN	C1-C2-C3	2.07	111.99	109.54
5	A	505	MAN	O6-C6-C5	2.08	118.21	111.33
5	A	504	NAG	C3-C4-C5	2.15	113.95	110.20
6	B	503	MAN	C1-C2-C3	3.17	113.29	109.54
6	B	504	FUC	C1-O5-C5	3.43	117.67	112.38
6	B	503	MAN	C1-O5-C5	3.56	116.77	112.25
5	A	507	MAN	C1-O5-C5	4.03	117.36	112.25
5	A	505	MAN	C1-C2-C3	4.20	114.52	109.54
5	A	505	MAN	C1-O5-C5	4.60	118.09	112.25
5	A	508	FUC	C1-C2-C3	4.60	114.99	109.54
5	A	504	NAG	C1-O5-C5	8.39	122.89	112.25
5	A	508	FUC	C1-O5-C5	8.45	125.44	112.38
5	A	503	NAG	C1-O5-C5	9.82	124.71	112.25

There are no chirality outliers.

There are no torsion outliers.

There are no ring outliers.

4 monomers are involved in 3 short contacts:

Mol	Chain	Res	Type	Clashes	Symm-Clashes
5	A	506	MAN	1	0
6	B	501	NAG	1	0
6	B	502	NAG	1	0
6	B	503	MAN	1	0

5.6 Ligand geometry ⓘ

2 ligands are modelled in this entry.

In the following table, the Counts columns list the number of bonds (or angles) for which Mogul

statistics could be retrieved, the number of bonds (or angles) that are observed in the model and the number of bonds (or angles) that are defined in the chemical component dictionary. The Link column lists molecule types, if any, to which the group is linked. The Z score for a bond length (or angle) is the number of standard deviations the observed value is removed from the expected value. A bond length (or angle) with $|Z| > 2$ is considered an outlier worth inspection. RMSZ is the root-mean-square of all Z scores of the bond lengths (or angles).

Mol	Type	Chain	Res	Link	Bond lengths			Bond angles		
					Counts	RMSZ	# $ Z > 2$	Counts	RMSZ	# $ Z > 2$
3	2BV	A	501	-	25,26,26	1.46	4 (16%)	26,36,36	1.60	5 (19%)
4	NAG	A	502	1	14,14,15	0.23	0	15,19,21	0.47	0

In the following table, the Chirals column lists the number of chiral outliers, the number of chiral centers analysed, the number of these observed in the model and the number defined in the chemical component dictionary. Similar counts are reported in the Torsion and Rings columns. '-' means no outliers of that kind were identified.

Mol	Type	Chain	Res	Link	Chirals	Torsions	Rings
3	2BV	A	501	-	-	0/19/27/27	0/2/2/2
4	NAG	A	502	1	-	0/6/23/26	0/1/1/1

All (4) bond length outliers are listed below:

Mol	Chain	Res	Type	Atoms	Z	Observed(Å)	Ideal(Å)
3	A	501	2BV	C6-CL1	2.70	1.80	1.73
3	A	501	2BV	P-C12	2.77	1.82	1.79
3	A	501	2BV	P-C11	3.02	1.82	1.79
3	A	501	2BV	C6-C5	4.02	1.49	1.39

All (5) bond angle outliers are listed below:

Mol	Chain	Res	Type	Atoms	Z	Observed(°)	Ideal(°)
3	A	501	2BV	C4-C5-CL2	2.17	121.85	118.50
3	A	501	2BV	C8-C3-C4	2.19	121.42	118.79
3	A	501	2BV	C7-C6-CL1	2.41	123.37	118.39
3	A	501	2BV	C17-C18-C13	3.21	117.39	112.22
3	A	501	2BV	C1-C2-N	3.63	113.95	109.07

There are no chirality outliers.

There are no torsion outliers.

There are no ring outliers.

1 monomer is involved in 1 short contact:

Mol	Chain	Res	Type	Clashes	Symm-Clashes
4	A	502	NAG	1	0

5.7 Other polymers [i](#)

There are no such residues in this entry.

5.8 Polymer linkage issues [i](#)

There are no chain breaks in this entry.

6 Fit of model and data ⓘ

6.1 Protein, DNA and RNA chains ⓘ

In the following table, the column labelled ‘#RSRZ> 2’ contains the number (and percentage) of RSRZ outliers, followed by percent RSRZ outliers for the chain as percentile scores relative to all X-ray entries and entries of similar resolution. The OWAB column contains the minimum, median, 95th percentile and maximum values of the occupancy-weighted average B-factor per residue. The column labelled ‘Q< 0.9’ lists the number of (and percentage) of residues with an average occupancy less than 0.9.

Mol	Chain	Analysed	<RSRZ>	#RSRZ>2	OWAB(Å ²)	Q<0.9
1	A	407/420 (96%)	0.55	32 (7%) 15 22	13, 36, 78, 90	0
2	B	403/433 (93%)	0.38	20 (4%) 32 43	11, 29, 64, 103	0
All	All	810/853 (94%)	0.47	52 (6%) 23 32	11, 33, 75, 103	0

All (52) RSRZ outliers are listed below:

Mol	Chain	Res	Type	RSRZ
2	B	387	ASP	7.6
2	B	386	GLN	7.0
2	B	388	PHE	6.1
1	A	291	ILE	5.4
1	A	461	TYR	5.3
1	A	222	PHE	5.0
1	A	377	ARG	4.9
1	A	445	TRP	4.5
2	B	377	HIS	4.3
1	A	269	LYS	3.6
2	B	378	ALA	3.6
2	B	379	SER	3.3
1	A	266	LEU	3.3
1	A	447	LYS	3.3
1	A	237	LEU	3.2
2	B	66	LYS	3.2
1	A	48	SER	3.1
1	A	49	GLU	3.1
2	B	376	LEU	2.9
2	B	223	ASP	2.8
2	B	385	ILE	2.8
1	A	298	MET	2.7
1	A	292	ASN	2.7
2	B	461	SER	2.7

Continued on next page...

Continued from previous page...

Mol	Chain	Res	Type	RSRZ
1	A	451	TRP	2.6
1	A	190	LYS	2.5
1	A	271	TYR	2.5
1	A	191	LYS	2.5
1	A	267	PHE	2.5
2	B	300	SER	2.5
2	B	304	ARG	2.4
1	A	129	CYS	2.4
1	A	387	THR	2.4
2	B	245	GLY	2.4
2	B	454	ASP	2.3
1	A	392	ILE	2.3
2	B	301	ARG	2.3
1	A	297	GLU	2.3
2	B	303	LEU	2.3
1	A	219	GLU	2.3
1	A	454	GLY	2.3
1	A	232	VAL	2.2
1	A	51	ARG	2.2
2	B	453	ASN	2.2
1	A	189	TRP	2.2
1	A	234	VAL	2.2
1	A	443	LEU	2.1
2	B	53	SER	2.1
1	A	198	THR	2.1
1	A	265	ARG	2.1
1	A	216	ALA	2.0
2	B	162	VAL	2.0

6.2 Non-standard residues in protein, DNA, RNA chains [i](#)

There are no non-standard protein/DNA/RNA residues in this entry.

6.3 Carbohydrates [i](#)

In the following table, the Atoms column lists the number of modelled atoms in the group and the number defined in the chemical component dictionary. LLDF column lists the quality of electron density of the group with respect to its neighbouring residues in protein, DNA or RNA chains. The B-factors column lists the minimum, median, 95th percentile and maximum values of B factors of atoms in the group. The column labelled 'Q < 0.9' lists the number of atoms with occupancy less than 0.9.

Mol	Type	Chain	Res	Atoms	RSCC	RSR	LLDF	B-factors(\AA^2)	Q<0.9
6	NAG	B	501	14/15	0.83	0.17	-	49,54,61,63	0
5	MAN	A	506	11/12	0.66	0.33	-	81,83,83,84	0
6	MAN	B	503	11/12	0.65	0.32	-	86,87,89,90	0
5	NAG	A	504	14/15	0.93	0.17	-	55,58,61,68	0
6	NAG	B	502	14/15	0.81	0.15	-	64,72,77,82	0
5	MAN	A	505	11/12	0.61	0.28	-	71,75,78,81	0
5	FUC	A	508	10/11	0.73	0.36	-	79,83,85,87	0
5	NAG	A	503	14/15	0.90	0.14	-	46,48,64,72	0
5	MAN	A	507	11/12	0.82	0.18	-	66,71,73,73	0
6	FUC	B	504	10/11	0.94	0.10	-	51,55,56,56	0

6.4 Ligands [i](#)

In the following table, the Atoms column lists the number of modelled atoms in the group and the number defined in the chemical component dictionary. LLDF column lists the quality of electron density of the group with respect to its neighbouring residues in protein, DNA or RNA chains. The B-factors column lists the minimum, median, 95th percentile and maximum values of B factors of atoms in the group. The column labelled 'Q< 0.9' lists the number of atoms with occupancy less than 0.9.

Mol	Type	Chain	Res	Atoms	RSCC	RSR	LLDF	B-factors(\AA^2)	Q<0.9
4	NAG	A	502	14/15	0.89	0.18	1.07	54,61,68,71	0
3	2BV	A	501	25/25	0.96	0.14	-0.13	14,24,38,50	0

6.5 Other polymers [i](#)

There are no such residues in this entry.