



wwPDB X-ray Structure Validation Summary Report ⓘ

Feb 1, 2016 – 10:42 AM GMT

PDB ID : 3MSJ
Title : Structure of bace (beta secretase) in complex with inhibitor
Authors : Madden, J.; Kramer, J.; Smith, M.A.; Barker, J.; Godemann, R.
Deposited on : 2010-04-29
Resolution : 1.80 Å(reported)

This is a wwPDB X-ray Structure Validation Summary Report for a publicly released PDB entry.
We welcome your comments at validation@mail.wwpdb.org
A user guide is available at
<http://wwpdb.org/validation/2016/XrayValidationReportHelp>
with specific help available everywhere you see the ⓘ symbol.

The following versions of software and data (see [references ⓘ](#)) were used in the production of this report:

MolProbity : 4.02b-467
Mogul : 1.7 (RC4), CSD as536be (2015)
Xtriage (Phenix) : 1.9-1692
EDS : rb-20026688
Percentile statistics : 20151230.v01 (using entries in the PDB archive December 30th 2015)
Refmac : 5.8.0135
CCP4 : 6.5.0
Ideal geometry (proteins) : Engh & Huber (2001)
Ideal geometry (DNA, RNA) : Parkinson et al. (1996)
Validation Pipeline (wwPDB-VP) : trunk26865

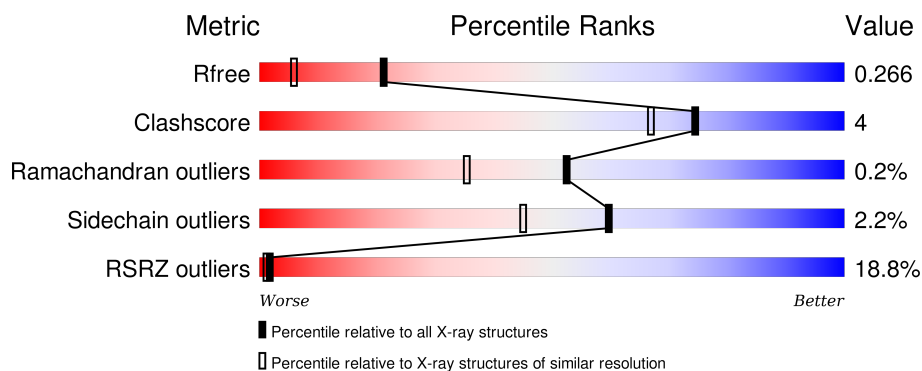
1 Overall quality at a glance

The following experimental techniques were used to determine the structure:

X-RAY DIFFRACTION

The reported resolution of this entry is 1.80 Å.

Percentile scores (ranging between 0-100) for global validation metrics of the entry are shown in the following graphic. The table shows the number of entries on which the scores are based.



Metric	Whole archive (#Entries)	Similar resolution (#Entries, resolution range(Å))
R_{free}	91344	4533 (1.80-1.80)
Clashscore	102246	5383 (1.80-1.80)
Ramachandran outliers	100387	5320 (1.80-1.80)
Sidechain outliers	100360	5319 (1.80-1.80)
RSRZ outliers	91569	4547 (1.80-1.80)

The table below summarises the geometric issues observed across the polymeric chains and their fit to the electron density. The red, orange, yellow and green segments on the lower bar indicate the fraction of residues that contain outliers for ≥ 3 , 2, 1 and 0 types of geometric quality criteria. A grey segment represents the fraction of residues that are not modelled. The numeric value for each fraction is indicated below the corresponding segment, with a dot representing fractions $\leq 5\%$. The upper red bar (where present) indicates the fraction of residues that have poor fit to the electron density. The numeric value is given above the bar.

Mol	Chain	Length	Quality of chain
1	A	411	<div> <div>20%</div> <div> <div></div> <div>78%</div> <div>11%</div> <div>•</div> <div>9%</div> </div> </div>
1	B	411	<div> <div>11%</div> <div> <div></div> <div>83%</div> <div>7%</div> <div>9%</div> </div> </div>
1	C	411	<div> <div>20%</div> <div> <div></div> <div>84%</div> <div>6%</div> <div>•</div> <div>9%</div> </div> </div>

The following table lists non-polymeric compounds, carbohydrate monomers and non-standard residues in protein, DNA, RNA chains that are outliers for geometric or electron-density-fit criteria:

Mol	Type	Chain	Res	Chirality	Geometry	Clashes	Electron density
3	GOL	A	395	-	-	-	X
3	GOL	A	396	-	-	-	X
3	GOL	A	399	-	-	-	X
3	GOL	B	394	-	-	X	X
3	GOL	B	395	-	-	-	X
3	GOL	B	397	-	-	-	X
3	GOL	B	398	-	-	-	X
3	GOL	B	400	-	-	-	X
3	GOL	C	394	-	-	-	X

2 Entry composition

There are 4 unique types of molecules in this entry. The entry contains 9702 atoms, of which 0 are hydrogens and 0 are deuteriums.

In the tables below, the ZeroOcc column contains the number of atoms modelled with zero occupancy, the AltConf column contains the number of residues with at least one atom in alternate conformation and the Trace column contains the number of residues modelled with at most 2 atoms.

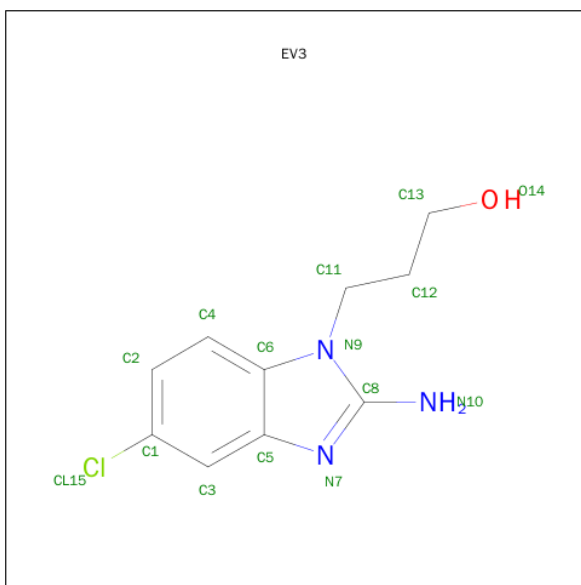
- Molecule 1 is a protein called BETA-SECRETASE 1.

Mol	Chain	Residues	Atoms					ZeroOcc	AltConf	Trace
1	A	373	Total	C	N	O	S	0	4	0
			2962	1897	493	558	14			
1	B	373	Total	C	N	O	S	0	4	0
			2956	1894	493	555	14			
1	C	375	Total	C	N	O	S	0	6	0
			2987	1912	494	567	14			

There are 6 discrepancies between the modelled and reference sequences:

Chain	Residue	Modelled	Actual	Comment	Reference
A	-5	LYS	ARG	ENGINEERED MUTATION	UNP P56817
A	-4	THR	ARG	ENGINEERED MUTATION	UNP P56817
B	-5	LYS	ARG	ENGINEERED MUTATION	UNP P56817
B	-4	THR	ARG	ENGINEERED MUTATION	UNP P56817
C	-5	LYS	ARG	ENGINEERED MUTATION	UNP P56817
C	-4	THR	ARG	ENGINEERED MUTATION	UNP P56817

- Molecule 2 is 3-(2-AMINO-5-CHLORO-1H-BENZIMIDAZOL-1-YL)PROPAN-1-OL (three-letter code: EV3) (formula: C₁₀H₁₂ClN₃O).



Mol	Chain	Residues	Atoms					ZeroOcc	AltConf
2	A	1	Total	C	Cl	N	O	0	0
			15	10	1	3	1		
2	B	1	Total	C	Cl	N	O	0	0
			15	10	1	3	1		
2	C	1	Total	C	Cl	N	O	0	0
			15	10	1	3	1		

- Molecule 3 is GLYCEROL (three-letter code: GOL) (formula: C₃H₈O₃).



Mol	Chain	Residues	Atoms			ZeroOcc	AltConf
3	A	1	Total	C	O	0	0
			6	3	3		

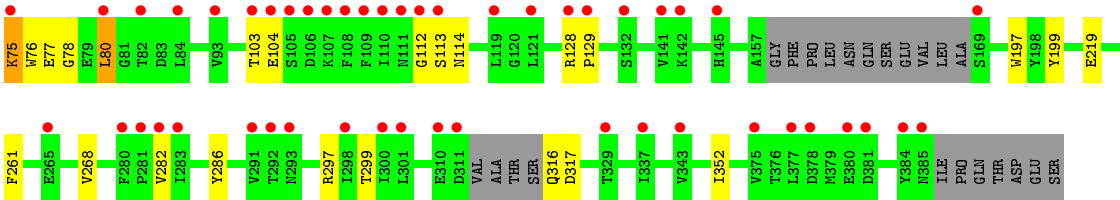
Continued on next page...

Continued from previous page...

Mol	Chain	Residues	Atoms	ZeroOcc	AltConf
3	A	1	Total C O 6 3 3	0	0
3	A	1	Total C O 6 3 3	0	0
3	A	1	Total C O 6 3 3	0	0
3	A	1	Total C O 6 3 3	0	0
3	A	1	Total C O 6 3 3	0	0
3	A	1	Total C O 6 3 3	0	0
3	B	1	Total C O 6 3 3	0	0
3	B	1	Total C O 6 3 3	0	0
3	B	1	Total C O 6 3 3	0	0
3	B	1	Total C O 6 3 3	0	0
3	B	1	Total C O 6 3 3	0	0
3	B	1	Total C O 6 3 3	0	0
3	B	1	Total C O 6 3 3	0	0
3	B	1	Total C O 6 3 3	0	0
3	C	1	Total C O 6 3 3	0	0
3	C	1	Total C O 6 3 3	0	0

- Molecule 4 is water.

Mol	Chain	Residues	Atoms	ZeroOcc	AltConf
4	A	236	Total O 236 236	0	0
4	B	243	Total O 246 246	0	3
4	C	167	Total O 168 168	0	1



4 Data and refinement statistics

Property	Value	Source
Space group	C 1 2 1	Depositor
Cell constants a, b, c, α , β , γ	229.20Å 98.83Å 63.13Å 90.00° 103.36° 90.00°	Depositor
Resolution (Å)	111.80 – 1.80 24.03 – 1.80	Depositor EDS
% Data completeness (in resolution range)	94.4 (111.80-1.80) 94.4 (24.03-1.80)	Depositor EDS
R_{merge}	0.05	Depositor
R_{sym}	(Not available)	Depositor
$\langle I/\sigma(I) \rangle$ ¹	1.39 (at 1.80Å)	Xtriage
Refinement program	REFMAC 5.2.0005	Depositor
R, R_{free}	0.177 , 0.208 0.247 , 0.266	Depositor DCC
R_{free} test set	1212 reflections (1.02%)	DCC
Wilson B-factor (Å ²)	30.4	Xtriage
Anisotropy	0.295	Xtriage
Bulk solvent k_{sol} (e/Å ³), B_{sol} (Å ²)	0.38 , 44.1	EDS
Estimated twinning fraction	0.024 for -h-2*k,l	Xtriage
L-test for twinning ²	$\langle L \rangle = 0.49$, $\langle L^2 \rangle = 0.32$	Xtriage
Outliers	0 of 119460 reflections	Xtriage
F_o, F_c correlation	0.94	EDS
Total number of atoms	9702	wwPDB-VP
Average B, all atoms (Å ²)	26.0	wwPDB-VP

Xtriage's analysis on translational NCS is as follows: *The largest off-origin peak in the Patterson function is 4.45% of the height of the origin peak. No significant pseudotranslation is detected.*

¹ Intensities estimated from amplitudes.

² Theoretical values of $\langle |L| \rangle$, $\langle L^2 \rangle$ for acentric reflections are 0.5, 0.375 respectively for untwinned datasets, and 0.333, 0.2 for perfectly twinned datasets.

5 Model quality [i](#)

5.1 Standard geometry [i](#)

Bond lengths and bond angles in the following residue types are not validated in this section: GOL, EV3

The Z score for a bond length (or angle) is the number of standard deviations the observed value is removed from the expected value. A bond length (or angle) with $|Z| > 5$ is considered an outlier worth inspection. RMSZ is the root-mean-square of all Z scores of the bond lengths (or angles).

Mol	Chain	Bond lengths		Bond angles	
		RMSZ	# Z >5	RMSZ	# Z >5
1	A	0.55	0/3046	0.69	2/4136 (0.0%)
1	B	0.55	0/3039	0.71	1/4127 (0.0%)
1	C	0.50	0/3077	0.65	0/4179
All	All	0.53	0/9162	0.68	3/12442 (0.0%)

There are no bond length outliers.

All (3) bond angle outliers are listed below:

Mol	Chain	Res	Type	Atoms	Z	Observed(°)	Ideal(°)
1	B	67	VAL	CB-CA-C	-6.05	99.90	111.40
1	A	297	ARG	NE-CZ-NH1	5.74	123.17	120.30
1	A	297	ARG	NE-CZ-NH2	-5.10	117.75	120.30

There are no chirality outliers.

There are no planarity outliers.

5.2 Too-close contacts [i](#)

In the following table, the Non-H and H(model) columns list the number of non-hydrogen atoms and hydrogen atoms in the chain respectively. The H(added) column lists the number of hydrogen atoms added and optimized by MolProbity. The Clashes column lists the number of clashes within the asymmetric unit, whereas Symm-Clashes lists symmetry related clashes.

Mol	Chain	Non-H	H(model)	H(added)	Clashes	Symm-Clashes
1	A	2962	0	2875	38	0
1	B	2956	0	2882	21	0
1	C	2987	0	2897	15	0
2	A	15	0	12	3	0
2	B	15	0	12	1	0

Continued on next page...

Continued from previous page...

Mol	Chain	Non-H	H(model)	H(added)	Clashes	Symm-Clashes
2	C	15	0	12	0	0
3	A	42	0	56	2	0
3	B	48	0	64	7	0
3	C	12	0	16	0	0
4	A	236	0	0	3	0
4	B	246	0	0	0	0
4	C	168	0	0	0	0
All	All	9702	0	8826	72	0

The all-atom clashscore is defined as the number of clashes found per 1000 atoms (including hydrogen atoms). The all-atom clashscore for this structure is 4.

The worst 5 of 72 close contacts within the same asymmetric unit are listed below, sorted by their clash magnitude.

Atom-1	Atom-2	Interatomic distance (Å)	Clash overlap (Å)
1:A:267:LEU:HD23	1:A:321:LYS:HG3	1.60	0.82
1:C:282:VAL:HG13	1:C:299:THR:HG23	1.68	0.75
1:A:215:MET:HE1	1:A:243:ALA:HB3	1.72	0.69
1:B:0:VAL:H	3:B:394:GOL:H31	1.63	0.63
1:A:309:VAL:HG21	1:A:321:LYS:HD2	1.83	0.61

There are no symmetry-related clashes.

5.3 Torsion angles [i](#)

5.3.1 Protein backbone [i](#)

In the following table, the Percentiles column shows the percent Ramachandran outliers of the chain as a percentile score with respect to all X-ray entries followed by that with respect to entries of similar resolution.

The Analysed column shows the number of residues for which the backbone conformation was analysed, and the total number of residues.

Mol	Chain	Analysed	Favoured	Allowed	Outliers	Percentiles	
1	A	371/411 (90%)	362 (98%)	9 (2%)	0	100	100
1	B	371/411 (90%)	364 (98%)	7 (2%)	0	100	100
1	C	375/411 (91%)	364 (97%)	9 (2%)	2 (0%)	34	17
All	All	1117/1233 (91%)	1090 (98%)	25 (2%)	2 (0%)	52	35

All (2) Ramachandran outliers are listed below:

Mol	Chain	Res	Type
1	C	-3	GLY
1	C	113	SER

5.3.2 Protein sidechains [i](#)

In the following table, the Percentiles column shows the percent sidechain outliers of the chain as a percentile score with respect to all X-ray entries followed by that with respect to entries of similar resolution.

The Analysed column shows the number of residues for which the sidechain conformation was analysed, and the total number of residues.

Mol	Chain	Analysed	Rotameric	Outliers	Percentiles	
1	A	322/352 (92%)	313 (97%)	9 (3%)	51	35
1	B	322/352 (92%)	317 (98%)	5 (2%)	70	59
1	C	326/352 (93%)	319 (98%)	7 (2%)	61	47
All	All	970/1056 (92%)	949 (98%)	21 (2%)	60	45

5 of 21 residues with a non-rotameric sidechain are listed below:

Mol	Chain	Res	Type
1	B	67	VAL
1	B	111	ASN
1	C	80	LEU
1	A	367	THR
1	C	197	TRP

Some sidechains can be flipped to improve hydrogen bonding and reduce clashes. 5 of 20 such sidechains are listed below:

Mol	Chain	Res	Type
1	B	28	ASN
1	B	53	GLN
1	C	53	GLN
1	A	326	GLN
1	A	362	HIS

5.3.3 RNA [i](#)

There are no RNA molecules in this entry.

5.4 Non-standard residues in protein, DNA, RNA chains ⓘ

There are no non-standard protein/DNA/RNA residues in this entry.

5.5 Carbohydrates ⓘ

There are no carbohydrates in this entry.

5.6 Ligand geometry ⓘ

20 ligands are modelled in this entry.

In the following table, the Counts columns list the number of bonds (or angles) for which Mogul statistics could be retrieved, the number of bonds (or angles) that are observed in the model and the number of bonds (or angles) that are defined in the chemical component dictionary. The Link column lists molecule types, if any, to which the group is linked. The Z score for a bond length (or angle) is the number of standard deviations the observed value is removed from the expected value. A bond length (or angle) with $|Z| > 2$ is considered an outlier worth inspection. RMSZ is the root-mean-square of all Z scores of the bond lengths (or angles).

Mol	Type	Chain	Res	Link	Bond lengths			Bond angles		
					Counts	RMSZ	$\# Z > 2$	Counts	RMSZ	$\# Z > 2$
2	EV3	A	393	-	14,16,16	1.41	2 (14%)	15,22,22	0.94	0
3	GOL	A	394	-	5,5,5	0.35	0	5,5,5	0.25	0
3	GOL	A	395	-	5,5,5	0.61	0	5,5,5	0.46	0
3	GOL	A	396	-	5,5,5	0.49	0	5,5,5	0.57	0
3	GOL	A	397	-	5,5,5	0.31	0	5,5,5	0.36	0
3	GOL	A	398	-	5,5,5	0.33	0	5,5,5	0.40	0
3	GOL	A	399	-	5,5,5	0.35	0	5,5,5	0.71	0
3	GOL	A	400	-	5,5,5	0.36	0	5,5,5	0.14	0
2	EV3	B	393	-	14,16,16	1.44	2 (14%)	15,22,22	0.95	0
3	GOL	B	394	-	5,5,5	0.66	0	5,5,5	1.56	2 (40%)
3	GOL	B	395	-	5,5,5	0.30	0	5,5,5	0.32	0
3	GOL	B	396	-	5,5,5	0.39	0	5,5,5	0.55	0
3	GOL	B	397	-	5,5,5	0.25	0	5,5,5	0.43	0
3	GOL	B	398	-	5,5,5	0.34	0	5,5,5	0.35	0
3	GOL	B	399	-	5,5,5	0.34	0	5,5,5	0.54	0
3	GOL	B	400	-	5,5,5	0.32	0	5,5,5	0.54	0
3	GOL	B	401	-	5,5,5	0.32	0	5,5,5	0.49	0
2	EV3	C	393	-	14,16,16	1.45	2 (14%)	15,22,22	0.87	0
3	GOL	C	394	-	5,5,5	0.39	0	5,5,5	0.49	0
3	GOL	C	395	-	5,5,5	0.39	0	5,5,5	0.35	0

In the following table, the Chirals column lists the number of chiral outliers, the number of chiral centers analysed, the number of these observed in the model and the number defined in the chemical component dictionary. Similar counts are reported in the Torsion and Rings columns. '-' means no outliers of that kind were identified.

Mol	Type	Chain	Res	Link	Chirals	Torsions	Rings
2	EV3	A	393	-	-	0/4/4/4	0/2/2/2
3	GOL	A	394	-	-	0/4/4/4	0/0/0/0
3	GOL	A	395	-	-	0/4/4/4	0/0/0/0
3	GOL	A	396	-	-	0/4/4/4	0/0/0/0
3	GOL	A	397	-	-	0/4/4/4	0/0/0/0
3	GOL	A	398	-	-	0/4/4/4	0/0/0/0
3	GOL	A	399	-	-	0/4/4/4	0/0/0/0
3	GOL	A	400	-	-	0/4/4/4	0/0/0/0
2	EV3	B	393	-	-	0/4/4/4	0/2/2/2
3	GOL	B	394	-	-	0/4/4/4	0/0/0/0
3	GOL	B	395	-	-	0/4/4/4	0/0/0/0
3	GOL	B	396	-	-	0/4/4/4	0/0/0/0
3	GOL	B	397	-	-	0/4/4/4	0/0/0/0
3	GOL	B	398	-	-	0/4/4/4	0/0/0/0
3	GOL	B	399	-	-	0/4/4/4	0/0/0/0
3	GOL	B	400	-	-	0/4/4/4	0/0/0/0
3	GOL	B	401	-	-	0/4/4/4	0/0/0/0
2	EV3	C	393	-	-	0/4/4/4	0/2/2/2
3	GOL	C	394	-	-	0/4/4/4	0/0/0/0
3	GOL	C	395	-	-	0/4/4/4	0/0/0/0

The worst 5 of 6 bond length outliers are listed below:

Mol	Chain	Res	Type	Atoms	Z	Observed(Å)	Ideal(Å)
2	A	393	EV3	C3-C5	-2.53	1.37	1.41
2	C	393	EV3	C3-C5	-2.40	1.38	1.41
2	B	393	EV3	C3-C5	-2.07	1.38	1.41
2	A	393	EV3	C8-N10	2.97	1.40	1.33
2	C	393	EV3	C8-N10	3.14	1.40	1.33

All (2) bond angle outliers are listed below:

Mol	Chain	Res	Type	Atoms	Z	Observed(°)	Ideal(°)
3	B	394	GOL	O3-C3-C2	2.14	120.56	110.18
3	B	394	GOL	O1-C1-C2	2.35	121.57	110.18

There are no chirality outliers.

There are no torsion outliers.

There are no ring outliers.

7 monomers are involved in 11 short contacts:

Mol	Chain	Res	Type	Clashes	Symm-Clashes
2	A	393	EV3	3	0
3	A	398	GOL	2	0
2	B	393	EV3	1	0
3	B	394	GOL	4	0
3	B	395	GOL	1	0
3	B	397	GOL	1	0
3	B	400	GOL	1	0

5.7 Other polymers [i](#)

There are no such residues in this entry.

5.8 Polymer linkage issues [i](#)

There are no chain breaks in this entry.

6 Fit of model and data [i](#)

6.1 Protein, DNA and RNA chains [i](#)

In the following table, the column labelled ‘#RSRZ> 2’ contains the number (and percentage) of RSRZ outliers, followed by percent RSRZ outliers for the chain as percentile scores relative to all X-ray entries and entries of similar resolution. The OWAB column contains the minimum, median, 95th percentile and maximum values of the occupancy-weighted average B-factor per residue. The column labelled ‘Q< 0.9’ lists the number of (and percentage) of residues with an average occupancy less than 0.9.

Mol	Chain	Analysed	<RSRZ>	#RSRZ>2		OWAB(Å ²)	Q<0.9
1	A	373/411 (90%)	1.08	82 (21%)	1 1	9, 20, 34, 179	5 (1%)
1	B	373/411 (90%)	0.62	47 (12%)	5 4	6, 24, 74, 100	4 (1%)
1	C	375/411 (91%)	1.28	82 (21%)	1 1	11, 20, 37, 618	4 (1%)
All	All	1121/1233 (90%)	0.99	211 (18%)	2 1	6, 21, 58, 618	13 (1%)

The worst 5 of 211 RSRZ outliers are listed below:

Mol	Chain	Res	Type	RSRZ
1	C	48	LEU	15.5
1	A	48	LEU	9.5
1	C	45	HIS	7.5
1	A	72	THR	7.4
1	C	73	GLN	7.2

6.2 Non-standard residues in protein, DNA, RNA chains [i](#)

There are no non-standard protein/DNA/RNA residues in this entry.

6.3 Carbohydrates [i](#)

There are no carbohydrates in this entry.

6.4 Ligands [i](#)

In the following table, the Atoms column lists the number of modelled atoms in the group and the number defined in the chemical component dictionary. LLDF column lists the quality of electron density of the group with respect to its neighbouring residues in protein, DNA or RNA chains. The B-factors column lists the minimum, median, 95th percentile and maximum values of B factors

of atoms in the group. The column labelled 'Q< 0.9' lists the number of atoms with occupancy less than 0.9.

Mol	Type	Chain	Res	Atoms	RSCC	RSR	LLDF	B-factors(\AA^2)	Q<0.9
3	GOL	A	395	6/6	0.81	0.28	9.88	21,31,34,42	0
3	GOL	B	400	6/6	0.74	0.36	7.40	35,42,43,46	0
3	GOL	A	399	6/6	0.69	0.32	7.11	51,56,57,58	0
3	GOL	B	395	6/6	0.81	0.24	5.40	36,41,44,44	0
3	GOL	B	394	6/6	0.83	0.33	4.54	5,19,31,38	0
3	GOL	B	398	6/6	0.81	0.35	3.74	19,39,42,44	0
3	GOL	C	394	6/6	0.86	0.22	3.18	21,34,35,43	0
3	GOL	B	397	6/6	0.88	0.21	2.37	29,33,33,35	0
3	GOL	A	396	6/6	0.64	0.23	2.16	22,40,41,45	0
3	GOL	B	396	6/6	0.87	0.21	1.59	11,37,42,42	0
3	GOL	B	401	6/6	0.78	0.22	0.95	51,54,56,58	0
2	EV3	B	393	15/15	0.79	0.17	0.50	38,42,44,44	0
2	EV3	C	393	15/15	0.66	0.21	0.24	62,72,72,72	0
2	EV3	A	393	15/15	0.84	0.13	-0.01	27,31,34,36	0
3	GOL	B	399	6/6	0.78	0.16	-0.20	31,40,42,43	0
3	GOL	A	398	6/6	0.68	0.14	-0.21	50,53,55,58	0
3	GOL	A	400	6/6	0.74	0.21	-	51,52,54,56	0
3	GOL	A	397	6/6	0.84	0.15	-	47,47,48,49	0
3	GOL	A	394	6/6	0.76	0.17	-	46,51,52,53	0
3	GOL	C	395	6/6	0.78	0.26	-	43,47,49,52	0

6.5 Other polymers [i](#)

There are no such residues in this entry.