



wwPDB X-ray Structure Validation Summary Report ⓘ

Feb 7, 2017 – 05:49 PM EST

PDB ID : 5MTR
Title : Crystal structure of M. tuberculosis InhA inhibited by PT512
Authors : Eltschkner, S.; Pschibul, A.; Spagnuolo, L.A.; Yu, W.; Tonge, P.J.; Kisker, C.
Deposited on : 2017-01-10
Resolution : 2.00 Å(reported)

This is a wwPDB X-ray Structure Validation Summary Report for a publicly released PDB entry.

We welcome your comments at validation@mail.wwpdb.org

A user guide is available at

<http://wwpdb.org/validation/2016/XrayValidationReportHelp>

with specific help available everywhere you see the ⓘ symbol.

The following versions of software and data (see [references ⓘ](#)) were used in the production of this report:

MolProbity	:	4.02b-467
Mogul	:	1.7.1 (RC1), CSD as537be (2016)
Xtriage (Phenix)	:	1.9-1692
EDS	:	rb-20028442
Percentile statistics	:	20151230.v01 (using entries in the PDB archive December 30th 2015)
Refmac	:	5.8.0135
CCP4	:	6.5.0
Ideal geometry (proteins)	:	Engh & Huber (2001)
Ideal geometry (DNA, RNA)	:	Parkinson et al. (1996)
Validation Pipeline (wwPDB-VP)	:	rb-20028442

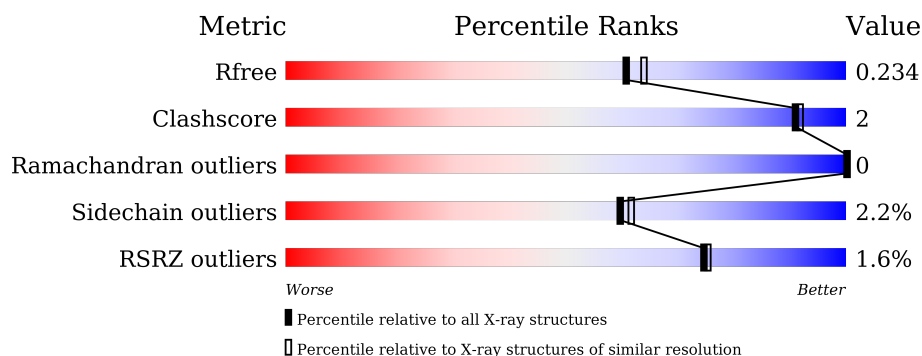
1 Overall quality at a glance

The following experimental techniques were used to determine the structure:

X-RAY DIFFRACTION

The reported resolution of this entry is 2.00 Å.

Percentile scores (ranging between 0-100) for global validation metrics of the entry are shown in the following graphic. The table shows the number of entries on which the scores are based.



Metric	Whole archive (#Entries)	Similar resolution (#Entries, resolution range(Å))
R_{free}	91344	6249 (2.00-2.00)
Clashscore	102246	7340 (2.00-2.00)
Ramachandran outliers	100387	7248 (2.00-2.00)
Sidechain outliers	100360	7247 (2.00-2.00)
RSRZ outliers	91569	6262 (2.00-2.00)

The table below summarises the geometric issues observed across the polymeric chains and their fit to the electron density. The red, orange, yellow and green segments on the lower bar indicate the fraction of residues that contain outliers for ≥ 3 , 2, 1 and 0 types of geometric quality criteria. A grey segment represents the fraction of residues that are not modelled. The numeric value for each fraction is indicated below the corresponding segment, with a dot representing fractions $\leq 5\%$. The upper red bar (where present) indicates the fraction of residues that have poor fit to the electron density. The numeric value is given above the bar.

Mol	Chain	Length	Quality of chain
1	A	289	<div> <div>82%</div> <div>9% • 7%</div> </div>
1	B	289	<div> <div>3%</div> <div>84%</div> <div>8% • 7%</div> </div>
1	C	289	<div> <div>83%</div> <div>8% • 7%</div> </div>
1	D	289	<div> <div>4%</div> <div>84%</div> <div>9% 7%</div> </div>
1	E	289	<div> <div>%</div> <div>81%</div> <div>8% • 8%</div> </div>
1	F	289	<div> <div>%</div> <div>83%</div> <div>9% • 7%</div> </div>

Continued on next page...

Continued from previous page...

Mol	Chain	Length	Quality of chain
1	G	289	<div><div><div></div><div></div><div></div></div><div><div>2%</div><div>80%</div><div>9%</div><div>10%</div></div></div>
1	H	289	<div><div><div></div><div></div><div></div></div><div><div>%</div><div>82%</div><div>8%</div><div>10%</div></div></div>

2 Entry composition

There are 5 unique types of molecules in this entry. The entry contains 17729 atoms, of which 0 are hydrogens and 0 are deuteriums.

In the tables below, the ZeroOcc column contains the number of atoms modelled with zero occupancy, the AltConf column contains the number of residues with at least one atom in alternate conformation and the Trace column contains the number of residues modelled with at most 2 atoms.

- Molecule 1 is a protein called Enoyl-[acyl-carrier-protein] reductase [NADH].

Mol	Chain	Residues	Atoms					ZeroOcc	AltConf	Trace
1	A	268	Total 2004	C 1270	N 348	O 375	S 11	0	2	0
1	B	268	Total 2002	C 1268	N 348	O 376	S 10	0	2	0
1	E	265	Total 1985	C 1257	N 345	O 373	S 10	0	2	0
1	G	260	Total 1954	C 1240	N 340	O 363	S 11	0	2	0
1	C	268	Total 1999	C 1266	N 348	O 375	S 10	0	1	0
1	D	268	Total 2002	C 1268	N 348	O 376	S 10	0	2	0
1	F	268	Total 2007	C 1271	N 348	O 378	S 10	0	3	0
1	H	261	Total 1960	C 1244	N 341	O 364	S 11	0	2	0

There are 160 discrepancies between the modelled and reference sequences:

Chain	Residue	Modelled	Actual	Comment	Reference
A	-19	MET	-	initiating methionine	UNP P9WGR1
A	-18	GLY	-	expression tag	UNP P9WGR1
A	-17	SER	-	expression tag	UNP P9WGR1
A	-16	SER	-	expression tag	UNP P9WGR1
A	-15	HIS	-	expression tag	UNP P9WGR1
A	-14	HIS	-	expression tag	UNP P9WGR1
A	-13	HIS	-	expression tag	UNP P9WGR1
A	-12	HIS	-	expression tag	UNP P9WGR1
A	-11	HIS	-	expression tag	UNP P9WGR1
A	-10	HIS	-	expression tag	UNP P9WGR1
A	-9	SER	-	expression tag	UNP P9WGR1
A	-8	SER	-	expression tag	UNP P9WGR1
A	-7	GLY	-	expression tag	UNP P9WGR1

Continued on next page...

Continued from previous page...

Chain	Residue	Modelled	Actual	Comment	Reference
A	-6	LEU	-	expression tag	UNP P9WGR1
A	-5	VAL	-	expression tag	UNP P9WGR1
A	-4	PRO	-	expression tag	UNP P9WGR1
A	-3	ARG	-	expression tag	UNP P9WGR1
A	-2	GLY	-	expression tag	UNP P9WGR1
A	-1	SER	-	expression tag	UNP P9WGR1
A	0	HIS	-	expression tag	UNP P9WGR1
B	-19	MET	-	initiating methionine	UNP P9WGR1
B	-18	GLY	-	expression tag	UNP P9WGR1
B	-17	SER	-	expression tag	UNP P9WGR1
B	-16	SER	-	expression tag	UNP P9WGR1
B	-15	HIS	-	expression tag	UNP P9WGR1
B	-14	HIS	-	expression tag	UNP P9WGR1
B	-13	HIS	-	expression tag	UNP P9WGR1
B	-12	HIS	-	expression tag	UNP P9WGR1
B	-11	HIS	-	expression tag	UNP P9WGR1
B	-10	HIS	-	expression tag	UNP P9WGR1
B	-9	SER	-	expression tag	UNP P9WGR1
B	-8	SER	-	expression tag	UNP P9WGR1
B	-7	GLY	-	expression tag	UNP P9WGR1
B	-6	LEU	-	expression tag	UNP P9WGR1
B	-5	VAL	-	expression tag	UNP P9WGR1
B	-4	PRO	-	expression tag	UNP P9WGR1
B	-3	ARG	-	expression tag	UNP P9WGR1
B	-2	GLY	-	expression tag	UNP P9WGR1
B	-1	SER	-	expression tag	UNP P9WGR1
B	0	HIS	-	expression tag	UNP P9WGR1
E	-19	MET	-	initiating methionine	UNP P9WGR1
E	-18	GLY	-	expression tag	UNP P9WGR1
E	-17	SER	-	expression tag	UNP P9WGR1
E	-16	SER	-	expression tag	UNP P9WGR1
E	-15	HIS	-	expression tag	UNP P9WGR1
E	-14	HIS	-	expression tag	UNP P9WGR1
E	-13	HIS	-	expression tag	UNP P9WGR1
E	-12	HIS	-	expression tag	UNP P9WGR1
E	-11	HIS	-	expression tag	UNP P9WGR1
E	-10	HIS	-	expression tag	UNP P9WGR1
E	-9	SER	-	expression tag	UNP P9WGR1
E	-8	SER	-	expression tag	UNP P9WGR1
E	-7	GLY	-	expression tag	UNP P9WGR1
E	-6	LEU	-	expression tag	UNP P9WGR1
E	-5	VAL	-	expression tag	UNP P9WGR1

Continued on next page...

Continued from previous page...

Chain	Residue	Modelled	Actual	Comment	Reference
E	-4	PRO	-	expression tag	UNP P9WGR1
E	-3	ARG	-	expression tag	UNP P9WGR1
E	-2	GLY	-	expression tag	UNP P9WGR1
E	-1	SER	-	expression tag	UNP P9WGR1
E	0	HIS	-	expression tag	UNP P9WGR1
G	-19	MET	-	initiating methionine	UNP P9WGR1
G	-18	GLY	-	expression tag	UNP P9WGR1
G	-17	SER	-	expression tag	UNP P9WGR1
G	-16	SER	-	expression tag	UNP P9WGR1
G	-15	HIS	-	expression tag	UNP P9WGR1
G	-14	HIS	-	expression tag	UNP P9WGR1
G	-13	HIS	-	expression tag	UNP P9WGR1
G	-12	HIS	-	expression tag	UNP P9WGR1
G	-11	HIS	-	expression tag	UNP P9WGR1
G	-10	HIS	-	expression tag	UNP P9WGR1
G	-9	SER	-	expression tag	UNP P9WGR1
G	-8	SER	-	expression tag	UNP P9WGR1
G	-7	GLY	-	expression tag	UNP P9WGR1
G	-6	LEU	-	expression tag	UNP P9WGR1
G	-5	VAL	-	expression tag	UNP P9WGR1
G	-4	PRO	-	expression tag	UNP P9WGR1
G	-3	ARG	-	expression tag	UNP P9WGR1
G	-2	GLY	-	expression tag	UNP P9WGR1
G	-1	SER	-	expression tag	UNP P9WGR1
G	0	HIS	-	expression tag	UNP P9WGR1
C	-19	MET	-	initiating methionine	UNP P9WGR1
C	-18	GLY	-	expression tag	UNP P9WGR1
C	-17	SER	-	expression tag	UNP P9WGR1
C	-16	SER	-	expression tag	UNP P9WGR1
C	-15	HIS	-	expression tag	UNP P9WGR1
C	-14	HIS	-	expression tag	UNP P9WGR1
C	-13	HIS	-	expression tag	UNP P9WGR1
C	-12	HIS	-	expression tag	UNP P9WGR1
C	-11	HIS	-	expression tag	UNP P9WGR1
C	-10	HIS	-	expression tag	UNP P9WGR1
C	-9	SER	-	expression tag	UNP P9WGR1
C	-8	SER	-	expression tag	UNP P9WGR1
C	-7	GLY	-	expression tag	UNP P9WGR1
C	-6	LEU	-	expression tag	UNP P9WGR1
C	-5	VAL	-	expression tag	UNP P9WGR1
C	-4	PRO	-	expression tag	UNP P9WGR1
C	-3	ARG	-	expression tag	UNP P9WGR1

Continued on next page...

Continued from previous page...

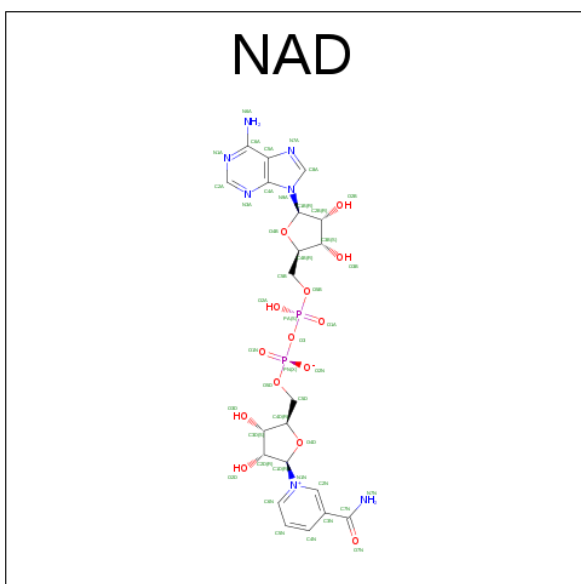
Chain	Residue	Modelled	Actual	Comment	Reference
C	-2	GLY	-	expression tag	UNP P9WGR1
C	-1	SER	-	expression tag	UNP P9WGR1
C	0	HIS	-	expression tag	UNP P9WGR1
D	-19	MET	-	initiating methionine	UNP P9WGR1
D	-18	GLY	-	expression tag	UNP P9WGR1
D	-17	SER	-	expression tag	UNP P9WGR1
D	-16	SER	-	expression tag	UNP P9WGR1
D	-15	HIS	-	expression tag	UNP P9WGR1
D	-14	HIS	-	expression tag	UNP P9WGR1
D	-13	HIS	-	expression tag	UNP P9WGR1
D	-12	HIS	-	expression tag	UNP P9WGR1
D	-11	HIS	-	expression tag	UNP P9WGR1
D	-10	HIS	-	expression tag	UNP P9WGR1
D	-9	SER	-	expression tag	UNP P9WGR1
D	-8	SER	-	expression tag	UNP P9WGR1
D	-7	GLY	-	expression tag	UNP P9WGR1
D	-6	LEU	-	expression tag	UNP P9WGR1
D	-5	VAL	-	expression tag	UNP P9WGR1
D	-4	PRO	-	expression tag	UNP P9WGR1
D	-3	ARG	-	expression tag	UNP P9WGR1
D	-2	GLY	-	expression tag	UNP P9WGR1
D	-1	SER	-	expression tag	UNP P9WGR1
D	0	HIS	-	expression tag	UNP P9WGR1
F	-19	MET	-	initiating methionine	UNP P9WGR1
F	-18	GLY	-	expression tag	UNP P9WGR1
F	-17	SER	-	expression tag	UNP P9WGR1
F	-16	SER	-	expression tag	UNP P9WGR1
F	-15	HIS	-	expression tag	UNP P9WGR1
F	-14	HIS	-	expression tag	UNP P9WGR1
F	-13	HIS	-	expression tag	UNP P9WGR1
F	-12	HIS	-	expression tag	UNP P9WGR1
F	-11	HIS	-	expression tag	UNP P9WGR1
F	-10	HIS	-	expression tag	UNP P9WGR1
F	-9	SER	-	expression tag	UNP P9WGR1
F	-8	SER	-	expression tag	UNP P9WGR1
F	-7	GLY	-	expression tag	UNP P9WGR1
F	-6	LEU	-	expression tag	UNP P9WGR1
F	-5	VAL	-	expression tag	UNP P9WGR1
F	-4	PRO	-	expression tag	UNP P9WGR1
F	-3	ARG	-	expression tag	UNP P9WGR1
F	-2	GLY	-	expression tag	UNP P9WGR1
F	-1	SER	-	expression tag	UNP P9WGR1

Continued on next page...

Continued from previous page...

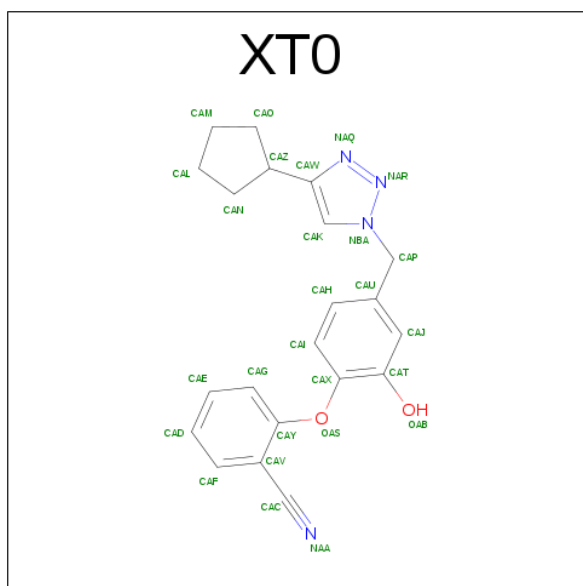
Chain	Residue	Modelled	Actual	Comment	Reference
F	0	HIS	-	expression tag	UNP P9WGR1
H	-19	MET	-	initiating methionine	UNP P9WGR1
H	-18	GLY	-	expression tag	UNP P9WGR1
H	-17	SER	-	expression tag	UNP P9WGR1
H	-16	SER	-	expression tag	UNP P9WGR1
H	-15	HIS	-	expression tag	UNP P9WGR1
H	-14	HIS	-	expression tag	UNP P9WGR1
H	-13	HIS	-	expression tag	UNP P9WGR1
H	-12	HIS	-	expression tag	UNP P9WGR1
H	-11	HIS	-	expression tag	UNP P9WGR1
H	-10	HIS	-	expression tag	UNP P9WGR1
H	-9	SER	-	expression tag	UNP P9WGR1
H	-8	SER	-	expression tag	UNP P9WGR1
H	-7	GLY	-	expression tag	UNP P9WGR1
H	-6	LEU	-	expression tag	UNP P9WGR1
H	-5	VAL	-	expression tag	UNP P9WGR1
H	-4	PRO	-	expression tag	UNP P9WGR1
H	-3	ARG	-	expression tag	UNP P9WGR1
H	-2	GLY	-	expression tag	UNP P9WGR1
H	-1	SER	-	expression tag	UNP P9WGR1
H	0	HIS	-	expression tag	UNP P9WGR1

- Molecule 2 is NICOTINAMIDE-ADENINE-DINUCLEOTIDE (three-letter code: NAD) (formula: $C_{21}H_{27}N_7O_{14}P_2$).



Mol	Chain	Residues	Atoms					ZeroOcc	AltConf
2	A	1	Total	C	N	O	P	0	0
			44	21	7	14	2		
2	B	1	Total	C	N	O	P	0	0
			44	21	7	14	2		
2	E	1	Total	C	N	O	P	0	0
			44	21	7	14	2		
2	G	1	Total	C	N	O	P	0	0
			44	21	7	14	2		
2	C	1	Total	C	N	O	P	0	0
			44	21	7	14	2		
2	D	1	Total	C	N	O	P	0	0
			44	21	7	14	2		
2	F	1	Total	C	N	O	P	0	0
			44	21	7	14	2		
2	H	1	Total	C	N	O	P	0	0
			44	21	7	14	2		

- Molecule 3 is 2-[4-[(4-cyclopentyl-1,2,3-triazol-1-yl)methyl]-2-oxidanyl-phenoxy]benzenecarbonitrile (three-letter code: XT0) (formula: C₂₁H₂₀N₄O₂).



Mol	Chain	Residues	Atoms					ZeroOcc	AltConf
3	A	1	Total	C	N	O		0	0
			27	21	4	2			
3	B	1	Total	C	N	O		0	0
			27	21	4	2			
3	E	1	Total	C	N	O		0	0
			27	21	4	2			

Continued on next page...

Continued from previous page...

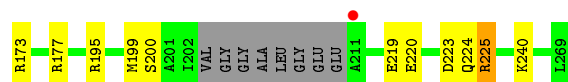
Mol	Chain	Residues	Atoms				ZeroOcc	AltConf
3	G	1	Total	C	N	O	0	0
			27	21	4	2		
3	C	1	Total	C	N	O	0	0
			27	21	4	2		
3	D	1	Total	C	N	O	0	0
			27	21	4	2		
3	F	1	Total	C	N	O	0	0
			27	21	4	2		
3	H	1	Total	C	N	O	0	0
			27	21	4	2		

- Molecule 4 is CHLORIDE ION (three-letter code: CL) (formula: Cl).

Mol	Chain	Residues	Atoms		ZeroOcc	AltConf
4	H	1	Total	Cl	0	0
			1	1		
4	C	1	Total	Cl	0	0
			1	1		

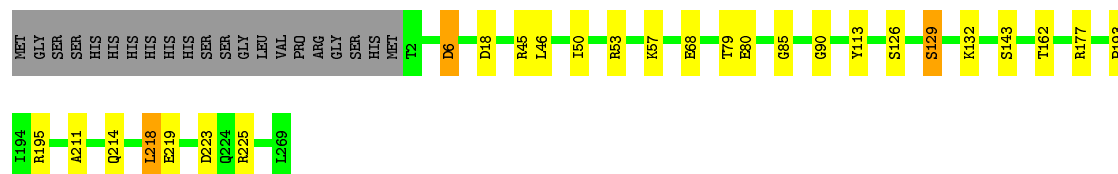
- Molecule 5 is water.

Mol	Chain	Residues	Atoms		ZeroOcc	AltConf
5	A	173	Total	O	0	0
			173	173		
5	B	174	Total	O	0	0
			174	174		
5	E	149	Total	O	0	0
			149	149		
5	G	136	Total	O	0	0
			136	136		
5	C	160	Total	O	0	0
			160	160		
5	D	153	Total	O	0	0
			153	153		
5	F	149	Total	O	0	0
			149	149		
5	H	152	Total	O	0	0
			152	152		



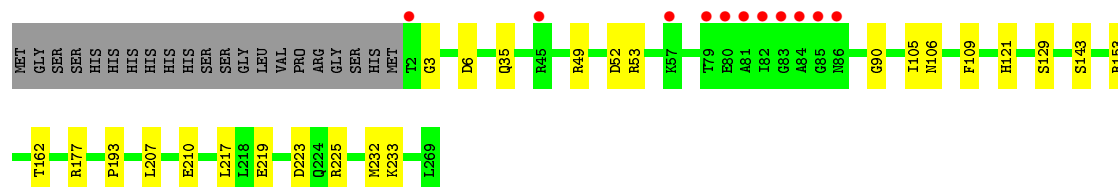
- Molecule 1: Enoyl-[acyl-carrier-protein] reductase [NADH]

Chain C: 83% 8% 7%



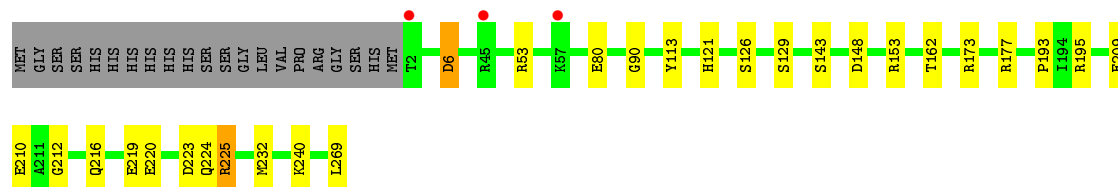
- Molecule 1: Enoyl-[acyl-carrier-protein] reductase [NADH]

Chain D: 4% 84% 9% 7%



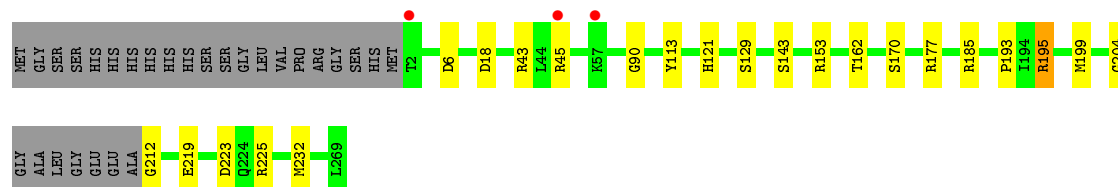
- Molecule 1: Enoyl-[acyl-carrier-protein] reductase [NADH]

Chain F: 83% 9% 7%



- Molecule 1: Enoyl-[acyl-carrier-protein] reductase [NADH]

Chain H: 82% 8% 10%



4 Data and refinement statistics

Property	Value	Source
Space group	P 1 2 1	Depositor
Cell constants a, b, c, α , β , γ	87.59 Å 92.23 Å 180.53 Å 90.00° 96.05° 90.00°	Depositor
Resolution (Å)	58.33 – 2.00 58.33 – 2.00	Depositor EDS
% Data completeness (in resolution range)	80.3 (58.33-2.00) 80.4 (58.33-2.00)	Depositor EDS
R_{merge}	0.10	Depositor
R_{sym}	(Not available)	Depositor
$\langle I/\sigma(I) \rangle$ ¹	2.18 (at 2.00 Å)	Xtriage
Refinement program	REFMAC 5.8.0155	Depositor
R, R_{free}	0.205 , 0.234 0.205 , 0.234	Depositor DCC
R_{free} test set	7736 reflections (5.25%)	DCC
Wilson B-factor (Å ²)	22.2	Xtriage
Anisotropy	0.152	Xtriage
Bulk solvent k_{sol} (e/Å ³), B_{sol} (Å ²)	0.37 , 46.8	EDS
L-test for twinning ²	$\langle L \rangle = 0.46$, $\langle L^2 \rangle = 0.29$	Xtriage
Estimated twinning fraction	No twinning to report.	Xtriage
F_o, F_c correlation	0.94	EDS
Total number of atoms	17729	wwPDB-VP
Average B, all atoms (Å ²)	26.0	wwPDB-VP

Xtriage's analysis on translational NCS is as follows: *The analyses of the Patterson function reveals a significant off-origin peak that is 29.89 % of the origin peak, indicating pseudo translational symmetry. The chance of finding a peak of this or larger height randomly in a structure without pseudo translational symmetry is equal to 1.4360e-03. The detected translational NCS is most likely also responsible for the elevated intensity ratio.*

¹ Intensities estimated from amplitudes.

² Theoretical values of $\langle |L| \rangle$, $\langle L^2 \rangle$ for acentric reflections are 0.5, 0.333 respectively for untwinned datasets, and 0.375, 0.2 for perfectly twinned datasets.

5 Model quality

5.1 Standard geometry

Bond lengths and bond angles in the following residue types are not validated in this section: CL, NAD, XT0

The Z score for a bond length (or angle) is the number of standard deviations the observed value is removed from the expected value. A bond length (or angle) with $|Z| > 5$ is considered an outlier worth inspection. RMSZ is the root-mean-square of all Z scores of the bond lengths (or angles).

Mol	Chain	Bond lengths		Bond angles	
		RMSZ	$\# Z > 5$	RMSZ	$\# Z > 5$
1	A	1.11	10/2048 (0.5%)	1.22	24/2779 (0.9%)
1	B	0.95	9/2046 (0.4%)	1.00	15/2777 (0.5%)
1	C	1.06	5/2040 (0.2%)	1.01	9/2769 (0.3%)
1	D	0.93	4/2046 (0.2%)	1.02	12/2777 (0.4%)
1	E	0.91	3/2028 (0.1%)	1.02	15/2751 (0.5%)
1	F	1.03	8/2054 (0.4%)	1.06	18/2788 (0.6%)
1	G	0.93	3/1997 (0.2%)	1.06	14/2709 (0.5%)
1	H	0.96	3/2003 (0.1%)	1.03	16/2717 (0.6%)
All	All	0.99	45/16262 (0.3%)	1.06	123/22067 (0.6%)

Chiral center outliers are detected by calculating the chiral volume of a chiral center and verifying if the center is modelled as a planar moiety or with the opposite hand. A planarity outlier is detected by checking planarity of atoms in a peptide group, atoms in a mainchain group or atoms of a sidechain that are expected to be planar.

Mol	Chain	#Chirality outliers	#Planarity outliers
1	A	0	2
1	B	0	1
1	C	0	2
All	All	0	5

The worst 5 of 45 bond length outliers are listed below:

Mol	Chain	Res	Type	Atoms	Z	Observed(Å)	Ideal(Å)
1	A	219	GLU	CD-OE1	13.10	1.40	1.25
1	C	219	GLU	CD-OE2	10.46	1.37	1.25
1	F	220	GLU	CD-OE2	10.36	1.37	1.25
1	A	219	GLU	CD-OE2	9.54	1.36	1.25
1	A	153	ARG	CZ-NH2	9.47	1.45	1.33

The worst 5 of 123 bond angle outliers are listed below:

Mol	Chain	Res	Type	Atoms	Z	Observed(°)	Ideal(°)
1	A	225	ARG	NE-CZ-NH2	-17.24	111.68	120.30
1	A	225	ARG	NE-CZ-NH1	15.36	127.98	120.30
1	A	153	ARG	NE-CZ-NH2	12.87	126.74	120.30
1	G	225	ARG	NE-CZ-NH1	12.53	126.56	120.30
1	H	225	ARG	NE-CZ-NH1	12.09	126.35	120.30

There are no chirality outliers.

All (5) planarity outliers are listed below:

Mol	Chain	Res	Type	Group
1	A	106	ASN	Sidechain
1	A	225	ARG	Sidechain
1	B	225	ARG	Sidechain
1	C	211	ALA	Mainchain
1	C	85	GLY	Mainchain

5.2 Too-close contacts

In the following table, the Non-H and H(model) columns list the number of non-hydrogen atoms and hydrogen atoms in the chain respectively. The H(added) column lists the number of hydrogen atoms added and optimized by MolProbity. The Clashes column lists the number of clashes within the asymmetric unit, whereas Symm-Clashes lists symmetry related clashes.

Mol	Chain	Non-H	H(model)	H(added)	Clashes	Symm-Clashes
1	A	2004	0	2027	10	0
1	B	2002	0	2023	8	0
1	C	1999	0	2018	14	0
1	D	2002	0	2023	11	0
1	E	1985	0	2003	15	0
1	F	2007	0	2027	7	0
1	G	1954	0	1980	10	0
1	H	1960	0	1987	6	0
2	A	44	0	26	1	0
2	B	44	0	26	0	0
2	C	44	0	26	1	0
2	D	44	0	26	1	0
2	E	44	0	26	1	0
2	F	44	0	26	1	0
2	G	44	0	26	0	0
2	H	44	0	26	1	0
3	A	27	0	0	0	0
3	B	27	0	0	0	0

Continued on next page...

Continued from previous page...

Mol	Chain	Non-H	H(model)	H(added)	Clashes	Symm-Clashes
3	C	27	0	0	0	0
3	D	27	0	0	0	0
3	E	27	0	0	0	0
3	F	27	0	0	0	0
3	G	27	0	0	0	0
3	H	27	0	0	0	0
4	C	1	0	0	0	0
4	H	1	0	0	0	0
5	A	173	0	0	3	1
5	B	174	0	0	1	0
5	C	160	0	0	3	0
5	D	153	0	0	6	0
5	E	149	0	0	7	0
5	F	149	0	0	2	1
5	G	136	0	0	2	0
5	H	152	0	0	0	0
All	All	17729	0	16296	71	1

The all-atom clashscore is defined as the number of clashes found per 1000 atoms (including hydrogen atoms). The all-atom clashscore for this structure is 2.

The worst 5 of 71 close contacts within the same asymmetric unit are listed below, sorted by their clash magnitude.

Atom-1	Atom-2	Interatomic distance (Å)	Clash overlap (Å)
1:G:106:ASN:ND2	5:G:401:HOH:O	1.98	0.94
1:E:106:ASN:OD1	5:E:401:HOH:O	1.85	0.92
1:G:195:ARG:HA	1:G:199[A]:MET:HE2	1.56	0.88
1:D:106:ASN:ND2	5:D:401:HOH:O	2.05	0.87
1:B:225:ARG:HD2	5:B:475:HOH:O	1.79	0.81

All (1) symmetry-related close contacts are listed below. The label for Atom-2 includes the symmetry operator and encoded unit-cell translations to be applied.

Atom-1	Atom-2	Interatomic distance (Å)	Clash overlap (Å)
5:A:528:HOH:O	5:F:404:HOH:O[2_656]	2.13	0.07

5.3 Torsion angles

5.3.1 Protein backbone

In the following table, the Percentiles column shows the percent Ramachandran outliers of the chain as a percentile score with respect to all X-ray entries followed by that with respect to entries of similar resolution.

The Analysed column shows the number of residues for which the backbone conformation was analysed, and the total number of residues.

Mol	Chain	Analysed	Favoured	Allowed	Outliers	Percentiles	
1	A	268/289 (93%)	256 (96%)	12 (4%)	0	100	100
1	B	268/289 (93%)	255 (95%)	13 (5%)	0	100	100
1	C	267/289 (92%)	256 (96%)	11 (4%)	0	100	100
1	D	268/289 (93%)	255 (95%)	13 (5%)	0	100	100
1	E	263/289 (91%)	250 (95%)	13 (5%)	0	100	100
1	F	269/289 (93%)	257 (96%)	12 (4%)	0	100	100
1	G	258/289 (89%)	246 (95%)	12 (5%)	0	100	100
1	H	259/289 (90%)	247 (95%)	12 (5%)	0	100	100
All	All	2120/2312 (92%)	2022 (95%)	98 (5%)	0	100	100

There are no Ramachandran outliers to report.

5.3.2 Protein sidechains

In the following table, the Percentiles column shows the percent sidechain outliers of the chain as a percentile score with respect to all X-ray entries followed by that with respect to entries of similar resolution.

The Analysed column shows the number of residues for which the sidechain conformation was analysed, and the total number of residues.

Mol	Chain	Analysed	Rotameric	Outliers	Percentiles	
1	A	206/222 (93%)	201 (98%)	5 (2%)	57	58
1	B	206/222 (93%)	200 (97%)	6 (3%)	50	49
1	C	205/222 (92%)	201 (98%)	4 (2%)	63	65
1	D	206/222 (93%)	202 (98%)	4 (2%)	65	67
1	E	205/222 (92%)	200 (98%)	5 (2%)	57	58
1	F	207/222 (93%)	202 (98%)	5 (2%)	57	58

Continued on next page...

Continued from previous page...

Mol	Chain	Analysed	Rotameric	Outliers	Percentiles	
1	G	202/222 (91%)	197 (98%)	5 (2%)	55	55
1	H	203/222 (91%)	200 (98%)	3 (2%)	72	75
All	All	1640/1776 (92%)	1603 (98%)	37 (2%)	60	60

5 of 37 residues with a non-rotameric sidechain are listed below:

Mol	Chain	Res	Type
1	G	6	ASP
1	G	162	THR
1	H	6	ASP
1	G	49	ARG
1	G	68	GLU

Some sidechains can be flipped to improve hydrogen bonding and reduce clashes. 5 of 9 such sidechains are listed below:

Mol	Chain	Res	Type
1	E	48	GLN
1	H	214	GLN
1	F	214	GLN
1	A	216	GLN
1	G	214	GLN

5.3.3 RNA [i](#)

There are no RNA molecules in this entry.

5.4 Non-standard residues in protein, DNA, RNA chains [i](#)

There are no non-standard protein/DNA/RNA residues in this entry.

5.5 Carbohydrates [i](#)

There are no carbohydrates in this entry.

5.6 Ligand geometry [i](#)

Of 18 ligands modelled in this entry, 2 are monoatomic - leaving 16 for Mogul analysis.

In the following table, the Counts columns list the number of bonds (or angles) for which Mogul statistics could be retrieved, the number of bonds (or angles) that are observed in the model and the number of bonds (or angles) that are defined in the chemical component dictionary. The Link column lists molecule types, if any, to which the group is linked. The Z score for a bond length (or angle) is the number of standard deviations the observed value is removed from the expected value. A bond length (or angle) with $|Z| > 2$ is considered an outlier worth inspection. RMSZ is the root-mean-square of all Z scores of the bond lengths (or angles).

Mol	Type	Chain	Res	Link	Bond lengths			Bond angles		
					Counts	RMSZ	# $ Z > 2$	Counts	RMSZ	# $ Z > 2$
2	NAD	A	301	-	42,48,48	1.06	3 (7%)	46,73,73	1.43	5 (10%)
3	XT0	A	302	-	29,30,30	1.95	6 (20%)	37,41,41	1.57	8 (21%)
2	NAD	B	301	-	42,48,48	0.69	0	46,73,73	1.38	6 (13%)
3	XT0	B	302	-	29,30,30	2.32	10 (34%)	37,41,41	2.05	10 (27%)
2	NAD	C	301	-	42,48,48	0.81	1 (2%)	46,73,73	1.68	5 (10%)
3	XT0	C	302	-	29,30,30	1.96	7 (24%)	37,41,41	1.86	10 (27%)
2	NAD	D	301	-	42,48,48	1.33	2 (4%)	46,73,73	1.44	3 (6%)
3	XT0	D	302	-	29,30,30	1.66	4 (13%)	37,41,41	1.64	6 (16%)
2	NAD	E	301	-	42,48,48	1.23	3 (7%)	46,73,73	1.41	5 (10%)
3	XT0	E	302	-	29,30,30	2.72	6 (20%)	37,41,41	1.34	3 (8%)
2	NAD	F	301	-	42,48,48	0.94	1 (2%)	46,73,73	1.50	7 (15%)
3	XT0	F	302	-	29,30,30	2.45	7 (24%)	37,41,41	1.50	5 (13%)
2	NAD	G	301	-	42,48,48	0.88	2 (4%)	46,73,73	1.03	1 (2%)
3	XT0	G	302	-	29,30,30	1.65	4 (13%)	37,41,41	1.21	2 (5%)
2	NAD	H	301	-	42,48,48	0.91	1 (2%)	46,73,73	1.58	4 (8%)
3	XT0	H	302	-	29,30,30	1.70	7 (24%)	37,41,41	1.54	4 (10%)

In the following table, the Chirals column lists the number of chiral outliers, the number of chiral centers analysed, the number of these observed in the model and the number defined in the chemical component dictionary. Similar counts are reported in the Torsion and Rings columns. '-' means no outliers of that kind were identified.

Mol	Type	Chain	Res	Link	Chirals	Torsions	Rings
2	NAD	A	301	-	-	0/22/62/62	0/5/5/5
3	XT0	A	302	-	-	0/14/21/21	0/4/4/4
2	NAD	B	301	-	-	0/22/62/62	0/5/5/5
3	XT0	B	302	-	-	0/14/21/21	0/4/4/4
2	NAD	C	301	-	-	0/22/62/62	0/5/5/5
3	XT0	C	302	-	-	0/14/21/21	0/4/4/4
2	NAD	D	301	-	-	0/22/62/62	0/5/5/5
3	XT0	D	302	-	-	0/14/21/21	0/4/4/4

Continued on next page...

Continued from previous page...

Mol	Type	Chain	Res	Link	Chirals	Torsions	Rings
2	NAD	E	301	-	-	0/22/62/62	0/5/5/5
3	XT0	E	302	-	-	0/14/21/21	0/4/4/4
2	NAD	F	301	-	-	0/22/62/62	0/5/5/5
3	XT0	F	302	-	-	0/14/21/21	0/4/4/4
2	NAD	G	301	-	-	0/22/62/62	0/5/5/5
3	XT0	G	302	-	-	0/14/21/21	0/4/4/4
2	NAD	H	301	-	-	0/22/62/62	0/5/5/5
3	XT0	H	302	-	-	0/14/21/21	0/4/4/4

The worst 5 of 64 bond length outliers are listed below:

Mol	Chain	Res	Type	Atoms	Z	Observed(Å)	Ideal(Å)
3	E	302	XT0	NAQ-NAR	-11.34	1.18	1.34
3	A	302	XT0	CAV-CAC	-6.61	1.34	1.44
3	B	302	XT0	CAP-CAU	-5.93	1.37	1.51
3	B	302	XT0	CAV-CAC	-4.97	1.36	1.44
3	C	302	XT0	CAP-CAU	-4.62	1.40	1.51

The worst 5 of 84 bond angle outliers are listed below:

Mol	Chain	Res	Type	Atoms	Z	Observed(°)	Ideal(°)
2	D	301	NAD	C4B-O4B-C1B	-7.28	101.92	109.64
2	B	301	NAD	C4B-O4B-C1B	-6.22	103.05	109.64
2	E	301	NAD	C4B-O4B-C1B	-6.15	103.12	109.64
2	H	301	NAD	C4D-O4D-C1D	-5.83	103.46	109.64
2	H	301	NAD	C4B-O4B-C1B	-5.82	103.47	109.64

There are no chirality outliers.

There are no torsion outliers.

There are no ring outliers.

6 monomers are involved in 6 short contacts:

Mol	Chain	Res	Type	Clashes	Symm-Clashes
2	A	301	NAD	1	0
2	C	301	NAD	1	0
2	D	301	NAD	1	0
2	E	301	NAD	1	0
2	F	301	NAD	1	0
2	H	301	NAD	1	0

5.7 Other polymers [i](#)

There are no such residues in this entry.

5.8 Polymer linkage issues [i](#)

There are no chain breaks in this entry.

6 Fit of model and data ⓘ

6.1 Protein, DNA and RNA chains ⓘ

In the following table, the column labelled ‘#RSRZ> 2’ contains the number (and percentage) of RSRZ outliers, followed by percent RSRZ outliers for the chain as percentile scores relative to all X-ray entries and entries of similar resolution. The OWAB column contains the minimum, median, 95th percentile and maximum values of the occupancy-weighted average B-factor per residue. The column labelled ‘Q< 0.9’ lists the number of (and percentage) of residues with an average occupancy less than 0.9.

Mol	Chain	Analysed	<RSRZ>	#RSRZ>2	OWAB(Å ²)	Q<0.9
1	A	268/289 (92%)	-0.18	1 (0%) 93 93	22, 25, 29, 60	0
1	B	268/289 (92%)	0.03	8 (2%) 54 55	22, 25, 37, 58	0
1	C	268/289 (92%)	-0.18	0 100 100	22, 25, 32, 44	0
1	D	268/289 (92%)	0.04	11 (4%) 41 42	23, 26, 41, 69	0
1	E	265/289 (91%)	-0.08	4 (1%) 76 77	23, 26, 38, 82	0
1	F	268/289 (92%)	-0.21	3 (1%) 82 83	23, 25, 36, 55	0
1	G	260/289 (89%)	-0.05	5 (1%) 70 70	23, 26, 39, 52	0
1	H	261/289 (90%)	-0.16	3 (1%) 82 83	23, 25, 35, 54	0
All	All	2126/2312 (91%)	-0.10	35 (1%) 74 75	22, 25, 37, 82	0

The worst 5 of 35 RSRZ outliers are listed below:

Mol	Chain	Res	Type	RSRZ
1	D	2	THR	5.2
1	D	84	ALA	5.0
1	F	2	THR	4.8
1	D	85	GLY	4.1
1	E	2	THR	4.0

6.2 Non-standard residues in protein, DNA, RNA chains ⓘ

There are no non-standard protein/DNA/RNA residues in this entry.

6.3 Carbohydrates ⓘ

There are no carbohydrates in this entry.

6.4 Ligands [i](#)

In the following table, the Atoms column lists the number of modelled atoms in the group and the number defined in the chemical component dictionary. LLDF column lists the quality of electron density of the group with respect to its neighbouring residues in protein, DNA or RNA chains. The B-factors column lists the minimum, median, 95th percentile and maximum values of B factors of atoms in the group. The column labelled 'Q< 0.9' lists the number of atoms with occupancy less than 0.9.

Mol	Type	Chain	Res	Atoms	RSCC	RSR	LLDF	B-factors(Å ²)	Q<0.9
2	NAD	H	301	44/44	0.98	0.08	-0.70	12,17,20,21	0
3	XT0	H	302	27/27	0.97	0.08	-0.87	15,18,24,25	0
2	NAD	C	301	44/44	0.98	0.07	-1.67	10,12,15,16	0
3	XT0	D	302	27/27	0.98	0.08	-1.76	12,14,17,19	0
2	NAD	B	301	44/44	0.97	0.07	-1.83	9,13,15,16	0
2	NAD	E	301	44/44	0.98	0.06	-1.84	11,16,19,21	0
2	NAD	A	301	44/44	0.98	0.06	-1.93	10,13,15,17	0
3	XT0	B	302	27/27	0.98	0.07	-1.94	10,12,16,17	0
2	NAD	D	301	44/44	0.97	0.07	-1.96	10,13,16,17	0
3	XT0	C	302	27/27	0.97	0.07	-1.98	12,13,21,21	0
3	XT0	E	302	27/27	0.97	0.07	-1.99	11,14,18,20	0
2	NAD	F	301	44/44	0.98	0.06	-2.12	10,14,17,19	0
2	NAD	G	301	44/44	0.98	0.07	-2.21	12,17,19,22	0
3	XT0	A	302	27/27	0.98	0.07	-2.25	14,16,19,19	0
3	XT0	F	302	27/27	0.98	0.06	-2.34	12,13,18,19	0
3	XT0	G	302	27/27	0.97	0.06	-2.95	12,14,17,18	0
4	CL	C	303	1/1	0.99	0.03	-	28,28,28,28	0
4	CL	H	303	1/1	0.97	0.10	-	31,31,31,31	0

6.5 Other polymers [i](#)

There are no such residues in this entry.