



# Full wwPDB X-ray Structure Validation Report ⓘ

Jan 31, 2016 – 08:57 PM GMT

PDB ID : 1MUK  
Title : reovirus lambda3 native structure  
Authors : Tao, Y.; Farsetta, D.L.; Nibert, M.L.; Harrison, S.C.  
Deposited on : 2002-09-24  
Resolution : 2.50 Å(reported)

This is a Full wwPDB X-ray Structure Validation Report for a publicly released PDB entry.  
We welcome your comments at [validation@mail.wwpdb.org](mailto:validation@mail.wwpdb.org)  
A user guide is available at  
<http://wwpdb.org/validation/2016/XrayValidationReportHelp>  
with specific help available everywhere you see the ⓘ symbol.

---

The following versions of software and data (see [references ⓘ](#)) were used in the production of this report:

MolProbity : 4.02b-467  
Mogul : 1.7 (RC4), CSD as536be (2015)  
Xtriage (Phenix) : 1.9-1692  
EDS : rb-20026688  
Percentile statistics : 20151230.v01 (using entries in the PDB archive December 30th 2015)  
Refmac : 5.8.0135  
CCP4 : 6.5.0  
Ideal geometry (proteins) : Engh & Huber (2001)  
Ideal geometry (DNA, RNA) : Parkinson et al. (1996)  
Validation Pipeline (wwPDB-VP) : trunk26865

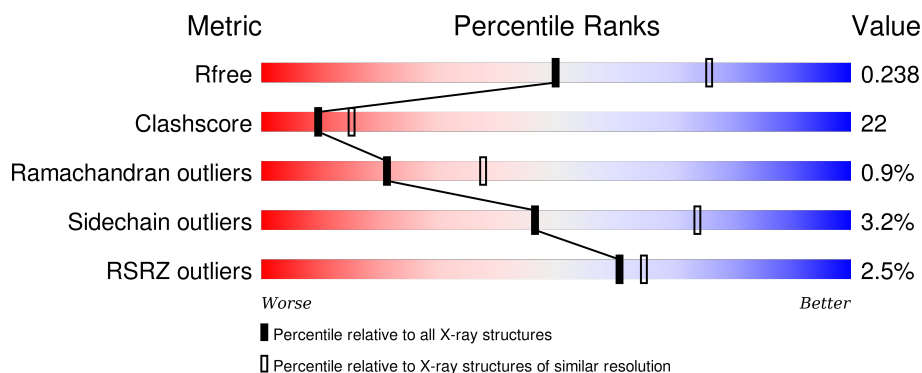
# 1 Overall quality at a glance

The following experimental techniques were used to determine the structure:

## *X-RAY DIFFRACTION*

The reported resolution of this entry is 2.50 Å.

Percentile scores (ranging between 0-100) for global validation metrics of the entry are shown in the following graphic. The table shows the number of entries on which the scores are based.



Metric	Whole archive (#Entries)	Similar resolution (#Entries, resolution range(Å))
$R_{free}$	91344	3553 (2.50-2.50)
Clashscore	102246	4242 (2.50-2.50)
Ramachandran outliers	100387	4156 (2.50-2.50)
Sidechain outliers	100360	4158 (2.50-2.50)
RSRZ outliers	91569	3562 (2.50-2.50)

The table below summarises the geometric issues observed across the polymeric chains and their fit to the electron density. The red, orange, yellow and green segments on the lower bar indicate the fraction of residues that contain outliers for  $\geq 3$ , 2, 1 and 0 types of geometric quality criteria. A grey segment represents the fraction of residues that are not modelled. The numeric value for each fraction is indicated below the corresponding segment, with a dot representing fractions  $\leq 5\%$ . The upper red bar (where present) indicates the fraction of residues that have poor fit to the electron density. The numeric value is given above the bar.

Mol	Chain	Length	Quality of chain
1	A	1267	<div> <div>2%</div> <div>66%</div> <div>31%</div> <div>..</div> </div>

## 2 Entry composition

There are 2 unique types of molecules in this entry. The entry contains 10478 atoms, of which 0 are hydrogens and 0 are deuteriums.

In the tables below, the ZeroOcc column contains the number of atoms modelled with zero occupancy, the AltConf column contains the number of residues with at least one atom in alternate conformation and the Trace column contains the number of residues modelled with at most 2 atoms.

- Molecule 1 is a protein called MINOR CORE PROTEIN LAMBDA 3.

Mol	Chain	Residues	Atoms					ZeroOcc	AltConf	Trace
1	A	1256	Total	C	N	O	S	27	0	0
			9929	6337	1697	1831	64			

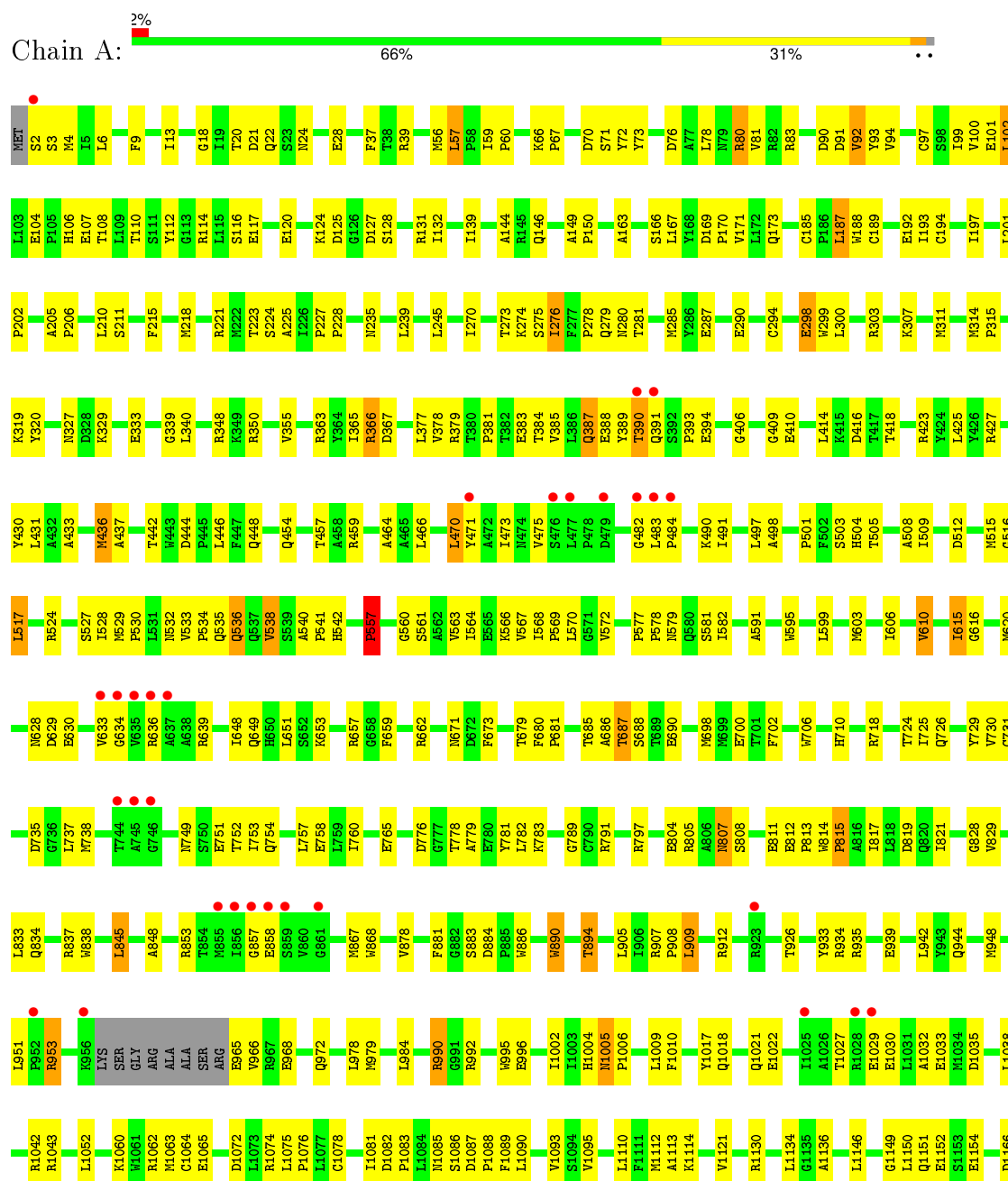
- Molecule 2 is water.

Mol	Chain	Residues	Atoms		ZeroOcc	AltConf
2	A	549	Total	O	0	0
			549	549		

### 3 Residue-property plots

These plots are drawn for all protein, RNA and DNA chains in the entry. The first graphic for a chain summarises the proportions of errors displayed in the second graphic. The second graphic shows the sequence view annotated by issues in geometry and electron density. Residues are color-coded according to the number of geometric quality criteria for which they contain at least one outlier: green = 0, yellow = 1, orange = 2 and red = 3 or more. A red dot above a residue indicates a poor fit to the electron density ( $RSRZ > 2$ ). Stretches of 2 or more consecutive residues without any outlier are shown as a green connector. Residues present in the sample, but not in the model, are shown in grey.

#### • Molecule 1: MINOR CORE PROTEIN LAMBDA 3





## 4 Data and refinement statistics

Property	Value	Source
Space group	P 21 21 21	Depositor
Cell constants a, b, c, $\alpha$ , $\beta$ , $\gamma$	70.87Å 85.16Å 248.64Å 90.00° 90.00° 90.00°	Depositor
Resolution (Å)	42.94 – 2.50 42.94 – 2.49	Depositor EDS
% Data completeness (in resolution range)	98.2 (42.94-2.50) 97.8 (42.94-2.49)	Depositor EDS
$R_{merge}$	0.07	Depositor
$R_{sym}$	(Not available)	Depositor
$\langle I/\sigma(I) \rangle$ <sup>1</sup>	1.80 (at 2.48Å)	Xtriage
Refinement program	CNS 1.0	Depositor
R, $R_{free}$	0.208 , 0.239 0.207 , 0.238	Depositor DCC
$R_{free}$ test set	2767 reflections (5.31%)	DCC
Wilson B-factor (Å <sup>2</sup> )	22.3	Xtriage
Anisotropy	0.095	Xtriage
Bulk solvent $k_{sol}$ (e/Å <sup>3</sup> ), $B_{sol}$ (Å <sup>2</sup> )	0.33 , 40.0	EDS
Estimated twinning fraction	No twinning to report.	Xtriage
L-test for twinning <sup>2</sup>	$\langle  L  \rangle = 0.49$ , $\langle L^2 \rangle = 0.33$	Xtriage
Outliers	0 of 52366 reflections	Xtriage
$F_o, F_c$ correlation	0.92	EDS
Total number of atoms	10478	wwPDB-VP
Average B, all atoms (Å <sup>2</sup> )	23.0	wwPDB-VP

Xtriage's analysis on translational NCS is as follows: *The largest off-origin peak in the Patterson function is 2.95% of the height of the origin peak. No significant pseudotranslation is detected.*

<sup>1</sup>Intensities estimated from amplitudes.

<sup>2</sup>Theoretical values of  $\langle |L| \rangle$ ,  $\langle L^2 \rangle$  for acentric reflections are 0.5, 0.375 respectively for untwinned datasets, and 0.333, 0.2 for perfectly twinned datasets.

## 5 Model quality [i](#)

### 5.1 Standard geometry [i](#)

The Z score for a bond length (or angle) is the number of standard deviations the observed value is removed from the expected value. A bond length (or angle) with  $|Z| > 5$  is considered an outlier worth inspection. RMSZ is the root-mean-square of all Z scores of the bond lengths (or angles).

Mol	Chain	Bond lengths		Bond angles	
		RMSZ	# Z  >5	RMSZ	# Z  >5
1	A	0.43	0/10181	0.64	0/13828

There are no bond length outliers.

There are no bond angle outliers.

There are no chirality outliers.

There are no planarity outliers.

### 5.2 Too-close contacts [i](#)

In the following table, the Non-H and H(model) columns list the number of non-hydrogen atoms and hydrogen atoms in the chain respectively. The H(added) column lists the number of hydrogen atoms added and optimized by MolProbity. The Clashes column lists the number of clashes within the asymmetric unit, whereas Symm-Clashes lists symmetry related clashes.

Mol	Chain	Non-H	H(model)	H(added)	Clashes	Symm-Clashes
1	A	9929	0	9840	442	0
2	A	549	0	0	169	0
All	All	10478	0	9840	442	0

The all-atom clashscore is defined as the number of clashes found per 1000 atoms (including hydrogen atoms). The all-atom clashscore for this structure is 22.

All (442) close contacts within the same asymmetric unit are listed below, sorted by their clash magnitude.

Atom-1	Atom-2	Interatomic distance (Å)	Clash overlap (Å)
1:A:1060:LYS:HD3	2:A:1401:HOH:O	1.47	1.12
1:A:726:GLN:HG2	2:A:1374:HOH:O	1.48	1.11
1:A:529:MET:HG2	2:A:1576:HOH:O	1.53	1.07
1:A:274:LYS:HE2	2:A:1795:HOH:O	1.54	1.05

*Continued on next page...*

*Continued from previous page...*

Atom-1	Atom-2	Interatomic distance (Å)	Clash overlap (Å)
1:A:223:THR:HG22	1:A:225:ALA:H	1.21	1.04
1:A:350:ARG:HD2	2:A:1803:HOH:O	1.57	1.02
1:A:1202:LYS:HB3	2:A:1809:HOH:O	1.61	0.99
1:A:634:GLY:HA2	2:A:1791:HOH:O	1.61	0.97
1:A:393:PRO:HA	2:A:1527:HOH:O	1.66	0.96
1:A:724:THR:HG22	1:A:726:GLN:H	1.31	0.95
1:A:1112:MET:HE2	2:A:1355:HOH:O	1.66	0.93
1:A:749:ASN:HD21	1:A:751:GLU:HB3	1.35	0.92
1:A:22:GLN:NE2	1:A:878:VAL:H	1.68	0.90
1:A:125:ASP:HB3	2:A:1743:HOH:O	1.71	0.89
1:A:615:ILE:HG23	1:A:616:GLY:H	1.39	0.88
1:A:270:ILE:HA	2:A:1433:HOH:O	1.74	0.87
1:A:688:SER:HB3	2:A:1793:HOH:O	1.74	0.85
1:A:749:ASN:HD22	1:A:752:THR:H	1.19	0.85
1:A:2:SER:N	1:A:6:LEU:HB2	1.91	0.85
1:A:319:LYS:NZ	2:A:1774:HOH:O	2.10	0.84
1:A:633:VAL:HA	2:A:1656:HOH:O	1.77	0.83
1:A:1112:MET:CE	2:A:1355:HOH:O	2.25	0.82
1:A:39:ARG:NH2	2:A:1731:HOH:O	2.10	0.82
1:A:114:ARG:HB2	1:A:215:PHE:CE1	2.16	0.81
1:A:1114:LYS:NZ	2:A:1752:HOH:O	2.12	0.81
1:A:104:GLU:HG3	1:A:116:SER:HA	1.63	0.81
1:A:557:PRO:HD2	1:A:731:CYS:O	1.81	0.80
1:A:388:GLU:HB2	2:A:1620:HOH:O	1.81	0.80
1:A:965:GLU:N	2:A:1382:HOH:O	2.14	0.79
1:A:18:GLY:HA2	2:A:1550:HOH:O	1.84	0.78
1:A:807:ASN:ND2	2:A:1491:HOH:O	2.16	0.78
1:A:114:ARG:HB2	1:A:215:PHE:HE1	1.47	0.77
1:A:1004:HIS:C	1:A:1006:PRO:HD3	2.05	0.77
1:A:280:ASN:HA	2:A:1638:HOH:O	1.84	0.76
1:A:1072:ASP:OD1	1:A:1074:ARG:HD3	1.85	0.76
1:A:808:SER:HB2	2:A:1767:HOH:O	1.85	0.76
1:A:146:GLN:HE22	1:A:805:ARG:H	1.32	0.76
1:A:81:VAL:H	1:A:671:ASN:HD21	1.31	0.76
1:A:348:ARG:NE	2:A:1638:HOH:O	2.19	0.75
1:A:76:ASP:OD2	1:A:80:ARG:NH1	2.20	0.75
1:A:951:LEU:O	2:A:1564:HOH:O	2.05	0.75
1:A:114:ARG:HG3	2:A:1554:HOH:O	1.86	0.75
1:A:797:ARG:NH1	2:A:1716:HOH:O	2.20	0.74
1:A:120:GLU:O	1:A:124:LYS:HG3	1.87	0.74
1:A:363:ARG:HH22	1:A:834:GLN:HE22	1.35	0.74

*Continued on next page...*

*Continued from previous page...*

Atom-1	Atom-2	Interatomic distance (Å)	Clash overlap (Å)
1:A:926:THR:HG21	1:A:1246:HIS:CG	2.22	0.74
1:A:615:ILE:HG23	1:A:616:GLY:N	2.01	0.73
1:A:388:GLU:CB	2:A:1620:HOH:O	2.36	0.73
1:A:821:ILE:HG23	1:A:845:LEU:HD13	1.71	0.73
1:A:1004:HIS:CD2	2:A:1585:HOH:O	2.41	0.72
1:A:101:GLU:HG2	1:A:102:LEU:HD13	1.71	0.72
1:A:536:GLN:HE22	1:A:685:THR:H	1.35	0.72
1:A:529:MET:N	2:A:1576:HOH:O	2.23	0.72
1:A:1179:ALA:O	2:A:1679:HOH:O	2.07	0.71
1:A:907:ARG:NH2	2:A:1401:HOH:O	2.22	0.71
1:A:22:GLN:HE21	1:A:878:VAL:H	1.35	0.71
1:A:423:ARG:CD	2:A:1497:HOH:O	2.39	0.71
1:A:423:ARG:HD2	2:A:1497:HOH:O	1.89	0.70
1:A:1113:ALA:O	2:A:1412:HOH:O	2.08	0.70
1:A:749:ASN:ND2	1:A:751:GLU:HB3	2.06	0.70
1:A:1005:ASN:OD1	2:A:1711:HOH:O	2.09	0.70
1:A:483:LEU:HG	1:A:966:VAL:HG13	1.71	0.70
1:A:290:GLU:HB3	1:A:355:VAL:HG12	1.73	0.70
1:A:541:PRO:HB2	1:A:648:ILE:HD11	1.72	0.70
1:A:996:GLU:OE1	2:A:1784:HOH:O	2.09	0.69
1:A:1005:ASN:N	1:A:1006:PRO:HD3	2.08	0.69
1:A:628:ASN:HD21	1:A:636:ARG:HE	1.40	0.69
1:A:173:GLN:OE1	2:A:1344:HOH:O	2.10	0.69
1:A:905:LEU:HD23	1:A:1063:MET:HE1	1.73	0.68
1:A:348:ARG:CZ	2:A:1638:HOH:O	2.40	0.68
1:A:423:ARG:HE	1:A:427:ARG:NH2	1.90	0.68
1:A:414:LEU:HD11	1:A:418:THR:HG21	1.74	0.68
1:A:564:ILE:HG23	2:A:1551:HOH:O	1.93	0.67
1:A:410:GLU:N	1:A:649:GLN:OE1	2.22	0.67
1:A:503:SER:HB3	2:A:1766:HOH:O	1.93	0.67
1:A:886:TRP:HA	2:A:1285:HOH:O	1.94	0.67
1:A:953:ARG:NE	2:A:1564:HOH:O	2.20	0.67
1:A:536:GLN:HA	1:A:536:GLN:HE21	1.59	0.66
1:A:1181:PRO:HD3	2:A:1679:HOH:O	1.95	0.66
1:A:636:ARG:NH2	2:A:1744:HOH:O	2.28	0.66
1:A:729:TYR:O	2:A:1464:HOH:O	2.12	0.66
1:A:1114:LYS:HA	2:A:1412:HOH:O	1.95	0.66
1:A:221:ARG:NE	2:A:1483:HOH:O	2.26	0.66
1:A:578:PRO:CD	2:A:1583:HOH:O	2.43	0.66
1:A:1043:ARG:CZ	2:A:1427:HOH:O	2.43	0.66
1:A:781:TYR:O	2:A:1724:HOH:O	2.14	0.65

*Continued on next page...*

*Continued from previous page...*

Atom-1	Atom-2	Interatomic distance (Å)	Clash overlap (Å)
1:A:348:ARG:NH2	2:A:1638:HOH:O	2.28	0.65
1:A:718:ARG:HD2	2:A:1728:HOH:O	1.96	0.65
1:A:560:GLY:C	2:A:1442:HOH:O	2.35	0.65
1:A:56:MET:HG2	1:A:188:TRP:CE2	2.31	0.65
1:A:70:ASP:OD2	2:A:1792:HOH:O	2.15	0.65
1:A:791:ARG:NH1	2:A:1403:HOH:O	2.30	0.65
1:A:1004:HIS:HD2	2:A:1585:HOH:O	1.77	0.65
1:A:1151:GLN:HG2	2:A:1339:HOH:O	1.97	0.65
1:A:566:LYS:HE3	2:A:1442:HOH:O	1.97	0.65
1:A:18:GLY:CA	2:A:1550:HOH:O	2.42	0.65
1:A:570:LEU:HD21	1:A:730:VAL:HG21	1.79	0.65
1:A:144:ALA:O	2:A:1353:HOH:O	2.14	0.65
1:A:894:THR:OG1	2:A:1781:HOH:O	2.15	0.64
1:A:1082:ASP:HB2	1:A:1083:PRO:CD	2.27	0.64
1:A:1154:GLU:OE2	2:A:1597:HOH:O	2.15	0.64
1:A:783:LYS:CD	2:A:1522:HOH:O	2.44	0.64
1:A:688:SER:N	2:A:1793:HOH:O	2.30	0.64
1:A:287:GLU:OE2	2:A:1683:HOH:O	2.14	0.64
1:A:718:ARG:CZ	2:A:1414:HOH:O	2.44	0.64
1:A:776:ASP:OD1	1:A:778:THR:HB	1.98	0.63
1:A:501:PRO:HD2	1:A:504:HIS:CD2	2.33	0.63
1:A:749:ASN:HD22	1:A:752:THR:N	1.95	0.63
1:A:718:ARG:NH2	2:A:1414:HOH:O	2.31	0.63
1:A:1027:THR:HG23	1:A:1030:GLU:H	1.62	0.63
1:A:320:TYR:O	2:A:1428:HOH:O	2.15	0.63
1:A:378:VAL:N	2:A:1359:HOH:O	2.26	0.63
1:A:529:MET:HA	1:A:529:MET:HE3	1.81	0.63
1:A:20:THR:HG22	1:A:21:ASP:O	1.99	0.63
1:A:464:ALA:HB3	2:A:1696:HOH:O	1.99	0.62
1:A:444:ASP:CG	2:A:1507:HOH:O	2.37	0.62
1:A:385:VAL:HG22	1:A:515:MET:HE3	1.79	0.62
1:A:221:ARG:NH2	2:A:1483:HOH:O	2.31	0.62
1:A:83:ARG:HG2	1:A:92:VAL:HA	1.81	0.62
1:A:188:TRP:CZ2	1:A:192:GLU:HG3	2.35	0.62
1:A:926:THR:CG2	1:A:1246:HIS:CG	2.83	0.62
1:A:848:ALA:O	2:A:1469:HOH:O	2.16	0.62
1:A:528:ILE:O	1:A:530:PRO:HD3	2.00	0.62
1:A:735:ASP:OD1	2:A:1603:HOH:O	2.16	0.61
1:A:636:ARG:CZ	2:A:1744:HOH:O	2.47	0.61
1:A:1087:ASP:HB3	1:A:1088:PRO:HD3	1.82	0.61
1:A:1151:GLN:CG	2:A:1339:HOH:O	2.48	0.61

*Continued on next page...*

*Continued from previous page...*

Atom-1	Atom-2	Interatomic distance (Å)	Clash overlap (Å)
1:A:724:THR:HG22	1:A:726:GLN:N	2.10	0.61
1:A:303:ARG:HH11	1:A:303:ARG:HG3	1.64	0.61
1:A:1002:ILE:HD13	1:A:1136:ALA:HB2	1.82	0.61
1:A:1201:PRO:HB2	1:A:1204:GLY:O	2.01	0.61
1:A:1005:ASN:ND2	1:A:1263:GLU:HB3	2.16	0.60
1:A:1082:ASP:HB2	1:A:1083:PRO:HD2	1.82	0.60
1:A:837:ARG:HG2	2:A:1625:HOH:O	1.99	0.60
1:A:965:GLU:OE2	2:A:1682:HOH:O	2.16	0.60
1:A:1005:ASN:HD21	1:A:1263:GLU:HB3	1.65	0.60
1:A:579:ASN:N	2:A:1583:HOH:O	2.34	0.60
1:A:366:ARG:NH2	2:A:1270:HOH:O	2.31	0.60
1:A:532:ASN:OD1	1:A:535:GLN:HG3	2.01	0.60
1:A:894:THR:CB	2:A:1781:HOH:O	2.49	0.60
1:A:657:ARG:HG2	1:A:657:ARG:HH11	1.66	0.60
1:A:990:ARG:NE	2:A:1459:HOH:O	2.34	0.60
1:A:634:GLY:CA	2:A:1791:HOH:O	2.35	0.59
1:A:319:LYS:NZ	2:A:1722:HOH:O	2.34	0.59
1:A:566:LYS:HD3	1:A:782:LEU:O	2.02	0.59
1:A:482:GLY:N	2:A:1672:HOH:O	2.18	0.59
1:A:470:LEU:HD13	1:A:508:ALA:HB2	1.84	0.59
1:A:1032:ALA:O	2:A:1690:HOH:O	2.16	0.59
1:A:409:GLY:HA3	1:A:649:GLN:OE1	2.01	0.59
1:A:146:GLN:NE2	1:A:805:ARG:H	1.99	0.59
1:A:1043:ARG:NH2	2:A:1427:HOH:O	2.35	0.59
1:A:894:THR:HB	2:A:1781:HOH:O	2.03	0.59
1:A:385:VAL:HG22	1:A:515:MET:CE	2.32	0.59
1:A:39:ARG:HG3	1:A:39:ARG:HH11	1.67	0.58
1:A:210:LEU:HD11	1:A:215:PHE:CD2	2.38	0.58
1:A:992:ARG:HH11	1:A:1010:PHE:HD2	1.51	0.58
1:A:189:CYS:O	1:A:193:ILE:HG12	2.03	0.58
1:A:1018:GLN:O	1:A:1022:GLU:HG3	2.04	0.58
1:A:557:PRO:CD	1:A:731:CYS:O	2.51	0.58
1:A:394:GLU:N	2:A:1527:HOH:O	2.23	0.57
1:A:758:GLU:OE1	2:A:1783:HOH:O	2.18	0.57
1:A:512:ASP:HB3	1:A:662:ARG:HG3	1.86	0.57
1:A:128:SER:HB2	2:A:1477:HOH:O	2.03	0.57
1:A:542:HIS:NE2	1:A:690:GLU:CG	2.67	0.57
1:A:884:ASP:OD2	2:A:1399:HOH:O	2.17	0.57
1:A:227:PRO:HB2	1:A:228:PRO:HD3	1.87	0.57
1:A:907:ARG:HB3	1:A:908:PRO:HD3	1.86	0.57
1:A:926:THR:HG23	1:A:1246:HIS:CD2	2.39	0.57

*Continued on next page...*

*Continued from previous page...*

Atom-1	Atom-2	Interatomic distance (Å)	Clash overlap (Å)
1:A:578:PRO:N	2:A:1583:HOH:O	2.37	0.57
1:A:92:VAL:CG1	1:A:383:GLU:HB3	2.35	0.57
1:A:718:ARG:NH1	2:A:1728:HOH:O	2.16	0.57
1:A:1152:GLU:CD	2:A:1459:HOH:O	2.43	0.56
1:A:128:SER:CB	2:A:1477:HOH:O	2.53	0.56
1:A:595:TRP:HA	1:A:599:LEU:HB2	1.86	0.56
1:A:804:GLU:OE1	2:A:1648:HOH:O	2.18	0.56
1:A:171:VAL:HG11	1:A:1090:LEU:HD11	1.87	0.56
1:A:817:ILE:O	1:A:821:ILE:HG12	2.05	0.56
1:A:454:GLN:OE1	2:A:1337:HOH:O	2.18	0.56
1:A:1206:HIS:HB2	1:A:1209:THR:HG23	1.87	0.56
1:A:24:ASN:O	1:A:28:GLU:HG3	2.05	0.56
1:A:557:PRO:HG3	1:A:781:TYR:OH	2.05	0.56
1:A:384:THR:HG23	2:A:1293:HOH:O	2.04	0.56
1:A:649:GLN:HG3	2:A:1698:HOH:O	2.05	0.55
1:A:436:MET:HE2	1:A:442:THR:OG1	2.05	0.55
1:A:457:THR:O	1:A:491:ILE:HG13	2.06	0.55
1:A:953:ARG:NH2	2:A:1564:HOH:O	2.37	0.55
1:A:797:ARG:CZ	2:A:1716:HOH:O	2.54	0.55
1:A:542:HIS:NE2	1:A:690:GLU:HG2	2.21	0.55
1:A:965:GLU:CA	2:A:1382:HOH:O	2.54	0.55
1:A:279:GLN:HG3	1:A:327:ASN:HD22	1.71	0.55
1:A:425:LEU:HB2	1:A:698:MET:HE1	1.87	0.55
1:A:1062:ARG:NH1	2:A:1809:HOH:O	2.40	0.55
1:A:688:SER:CB	2:A:1793:HOH:O	2.44	0.55
1:A:905:LEU:CD2	1:A:1063:MET:HE1	2.37	0.55
1:A:563:VAL:HG12	1:A:568:ILE:HD11	1.88	0.55
1:A:279:GLN:HG3	1:A:327:ASN:ND2	2.22	0.55
1:A:446:LEU:HD13	1:A:1149:GLY:HA3	1.87	0.55
1:A:393:PRO:HD3	1:A:591:ALA:O	2.07	0.54
1:A:783:LYS:HD2	2:A:1522:HOH:O	2.07	0.54
1:A:578:PRO:CG	2:A:1583:HOH:O	2.55	0.54
1:A:686:ALA:O	1:A:690:GLU:HB2	2.07	0.54
1:A:94:VAL:HG22	1:A:139:ILE:HG23	1.90	0.54
1:A:414:LEU:CD1	1:A:418:THR:HG21	2.38	0.54
1:A:385:VAL:HG22	1:A:515:MET:SD	2.48	0.54
1:A:57:LEU:HD22	1:A:185:CYS:SG	2.47	0.54
1:A:223:THR:HG22	1:A:224:SER:N	2.22	0.53
1:A:71:SER:OG	2:A:1370:HOH:O	2.18	0.53
1:A:106:HIS:CE1	1:A:108:THR:H	2.27	0.53
1:A:149:ALA:HB1	1:A:150:PRO:CD	2.38	0.53

*Continued on next page...*

*Continued from previous page...*

Atom-1	Atom-2	Interatomic distance (Å)	Clash overlap (Å)
1:A:294:CYS:SG	1:A:577:PRO:HD2	2.49	0.53
1:A:536:GLN:NE2	1:A:685:THR:HG23	2.24	0.53
1:A:894:THR:HB	2:A:1549:HOH:O	2.07	0.53
1:A:783:LYS:HE3	2:A:1716:HOH:O	2.09	0.53
1:A:1224:PHE:HE2	2:A:1679:HOH:O	1.89	0.53
1:A:459:ARG:NE	2:A:1802:HOH:O	2.42	0.53
1:A:194:CYS:SG	1:A:206:PRO:HG2	2.49	0.53
1:A:299:TRP:CD2	1:A:303:ARG:HG2	2.44	0.52
1:A:470:LEU:HD11	1:A:505:THR:HA	1.91	0.52
1:A:235:ASN:O	1:A:239:LEU:HG	2.09	0.52
1:A:281:THR:O	1:A:285:MET:HG2	2.09	0.52
1:A:603:MET:HE1	1:A:651:LEU:HD23	1.91	0.52
1:A:533:VAL:HB	1:A:534:PRO:HD3	1.90	0.52
1:A:1095:VAL:HG23	1:A:1237:ALA:HB2	1.91	0.52
1:A:290:GLU:CB	1:A:355:VAL:HG12	2.38	0.52
1:A:104:GLU:CD	1:A:117:GLU:H	2.13	0.52
1:A:298:GLU:HB2	1:A:311:MET:CE	2.40	0.52
1:A:968:GLU:OE2	2:A:1755:HOH:O	2.19	0.52
1:A:884:ASP:HB3	2:A:1535:HOH:O	2.10	0.52
1:A:881:PHE:O	1:A:909:LEU:HD12	2.10	0.52
1:A:965:GLU:HA	2:A:1382:HOH:O	2.10	0.51
1:A:807:ASN:H	1:A:807:ASN:HD22	1.58	0.51
1:A:807:ASN:HD22	1:A:807:ASN:N	2.08	0.51
1:A:1209:THR:OG1	2:A:1308:HOH:O	2.17	0.51
1:A:497:LEU:HD22	1:A:505:THR:HG21	1.93	0.51
1:A:1065:GLU:CD	1:A:1065:GLU:H	2.13	0.51
1:A:319:LYS:HB2	2:A:1521:HOH:O	2.10	0.51
1:A:81:VAL:HG13	1:A:132:ILE:HD13	1.92	0.51
1:A:406:GLY:HA3	1:A:630:GLU:O	2.10	0.51
1:A:92:VAL:HG11	1:A:383:GLU:HB3	1.92	0.51
1:A:942:LEU:O	1:A:942:LEU:HD23	2.10	0.51
1:A:299:TRP:CE2	1:A:303:ARG:HG2	2.46	0.51
1:A:765:GLU:OE2	2:A:1452:HOH:O	2.19	0.51
1:A:223:THR:CG2	1:A:224:SER:N	2.74	0.51
1:A:78:LEU:HD12	1:A:80:ARG:NH2	2.25	0.51
1:A:541:PRO:HB2	1:A:648:ILE:CD1	2.40	0.51
1:A:778:THR:CG2	1:A:779:ALA:N	2.72	0.51
1:A:754:GLN:O	1:A:758:GLU:HG3	2.11	0.51
1:A:430:TYR:OH	2:A:1589:HOH:O	2.14	0.51
1:A:783:LYS:NZ	2:A:1770:HOH:O	2.44	0.50
1:A:1005:ASN:N	1:A:1006:PRO:CD	2.75	0.50

*Continued on next page...*

*Continued from previous page...*

Atom-1	Atom-2	Interatomic distance (Å)	Clash overlap (Å)
1:A:221:ARG:HB2	1:A:221:ARG:NH1	2.26	0.50
1:A:285:MET:HG3	1:A:365:ILE:HD11	1.93	0.50
1:A:490:LYS:NZ	2:A:1416:HOH:O	2.44	0.50
1:A:628:ASN:HD21	1:A:636:ARG:NE	2.08	0.50
1:A:379:ARG:HH12	1:A:387:GLN:NE2	2.07	0.50
1:A:505:THR:OG1	2:A:1794:HOH:O	2.19	0.50
1:A:107:GLU:HB2	2:A:1451:HOH:O	2.11	0.50
1:A:110:THR:OG1	2:A:1764:HOH:O	2.19	0.50
1:A:724:THR:CG2	1:A:726:GLN:H	2.15	0.50
1:A:819:ASP:OD1	1:A:953:ARG:NH1	2.43	0.50
1:A:538:VAL:HG13	1:A:651:LEU:HB2	1.94	0.50
1:A:389:TYR:OH	1:A:527:SER:HB2	2.10	0.50
1:A:942:LEU:HD23	1:A:942:LEU:C	2.32	0.50
1:A:9:PHE:O	1:A:13:ILE:HG13	2.12	0.50
1:A:629:ASP:OD2	1:A:639:ARG:CZ	2.60	0.49
1:A:529:MET:CE	1:A:529:MET:HA	2.42	0.49
1:A:275:SER:O	1:A:278:PRO:HD2	2.12	0.49
1:A:73:TYR:HB2	1:A:132:ILE:HG23	1.93	0.49
1:A:221:ARG:CZ	2:A:1483:HOH:O	2.59	0.49
1:A:149:ALA:HB1	1:A:150:PRO:HD2	1.95	0.49
1:A:127:ASP:O	1:A:131:ARG:HG3	2.12	0.49
1:A:166:SER:OG	2:A:1592:HOH:O	2.17	0.49
1:A:653:LYS:NZ	2:A:1773:HOH:O	2.45	0.49
1:A:934:ARG:HB2	2:A:1381:HOH:O	2.12	0.49
1:A:1134:LEU:HA	1:A:1257:MET:CE	2.43	0.49
1:A:995:TRP:CZ2	1:A:1006:PRO:HG3	2.48	0.49
1:A:1200:LEU:C	1:A:1200:LEU:HD23	2.33	0.49
1:A:883:SER:HB2	2:A:1357:HOH:O	2.13	0.49
1:A:39:ARG:NH1	1:A:39:ARG:HG3	2.28	0.48
1:A:1086:SER:O	1:A:1090:LEU:HG	2.13	0.48
1:A:197:ILE:O	1:A:221:ARG:NH1	2.31	0.48
1:A:482:GLY:CA	2:A:1672:HOH:O	2.59	0.48
1:A:1065:GLU:OE1	2:A:1429:HOH:O	2.20	0.48
1:A:853:ARG:NH1	2:A:1806:HOH:O	2.46	0.48
1:A:1203:ASP:N	2:A:1809:HOH:O	2.45	0.48
1:A:829:VAL:HG13	1:A:890:TRP:CD1	2.48	0.48
1:A:606:ILE:O	1:A:610:VAL:HB	2.13	0.48
1:A:114:ARG:HG2	2:A:1602:HOH:O	2.12	0.48
1:A:649:GLN:CG	2:A:1698:HOH:O	2.61	0.48
1:A:857:GLY:O	1:A:858:GLU:HB3	2.13	0.48
1:A:582:ILE:HG21	1:A:757:LEU:CD2	2.44	0.48

*Continued on next page...*

*Continued from previous page...*

Atom-1	Atom-2	Interatomic distance (Å)	Clash overlap (Å)
1:A:1219:ARG:NH1	2:A:1298:HOH:O	2.41	0.48
1:A:944:GLN:HB3	1:A:948:MET:CE	2.44	0.48
1:A:363:ARG:HH22	1:A:834:GLN:NE2	2.09	0.48
1:A:582:ILE:HG21	1:A:757:LEU:HD21	1.95	0.48
1:A:944:GLN:HB3	1:A:948:MET:HE2	1.95	0.48
1:A:700:GLU:HB2	1:A:725:ILE:HD13	1.96	0.48
1:A:437:ALA:HB2	1:A:610:VAL:HG22	1.96	0.47
1:A:516:GLY:O	1:A:517:LEU:HD12	2.14	0.47
1:A:688:SER:CA	2:A:1793:HOH:O	2.62	0.47
1:A:1085:ASN:O	1:A:1088:PRO:HD2	2.14	0.47
1:A:211:SER:HA	1:A:811:GLU:OE2	2.14	0.47
1:A:1258:THR:HG23	1:A:1262:GLN:NE2	2.29	0.47
1:A:1075:LEU:HA	1:A:1076:PRO:HD3	1.82	0.47
1:A:935:ARG:O	1:A:939:GLU:HG3	2.15	0.47
1:A:377:LEU:N	1:A:377:LEU:HD12	2.30	0.47
1:A:1110:LEU:HD22	1:A:1121:VAL:HG12	1.96	0.47
1:A:448:GLN:NE2	1:A:620:MET:H	2.12	0.47
1:A:100:VAL:HG13	1:A:101:GLU:N	2.29	0.47
1:A:829:VAL:HG13	1:A:890:TRP:CE2	2.50	0.47
1:A:578:PRO:HG2	2:A:1583:HOH:O	2.15	0.46
1:A:628:ASN:ND2	1:A:636:ARG:HE	2.11	0.46
1:A:83:ARG:HG3	1:A:83:ARG:HH11	1.79	0.46
1:A:582:ILE:HB	1:A:738:MET:HB3	1.98	0.46
1:A:515:MET:HA	1:A:529:MET:CE	2.45	0.46
1:A:388:GLU:CG	2:A:1620:HOH:O	2.64	0.46
1:A:314:MET:CE	1:A:315:PRO:HD2	2.45	0.46
1:A:1002:ILE:HD13	1:A:1136:ALA:CB	2.44	0.46
1:A:355:VAL:O	1:A:355:VAL:HG12	2.15	0.46
1:A:503:SER:CB	2:A:1718:HOH:O	2.63	0.46
1:A:814:TRP:CD2	1:A:815:PRO:HB3	2.50	0.46
1:A:724:THR:HB	2:A:1733:HOH:O	2.16	0.46
1:A:542:HIS:HE2	1:A:690:GLU:CG	2.28	0.46
1:A:540:ALA:HB3	1:A:541:PRO:HD3	1.98	0.46
1:A:390:THR:HG22	1:A:391:GLN:HG3	1.97	0.46
1:A:67:PRO:O	1:A:97:CYS:HB3	2.15	0.46
1:A:568:ILE:HB	1:A:569:PRO:HD3	1.98	0.45
1:A:1078:CYS:HB3	1:A:1081:ILE:HD12	1.98	0.45
1:A:783:LYS:HD2	2:A:1716:HOH:O	2.16	0.45
1:A:595:TRP:HZ2	2:A:1761:HOH:O	1.99	0.45
1:A:414:LEU:HD12	2:A:1450:HOH:O	2.16	0.45
1:A:1064:CYS:HB3	1:A:1065:GLU:OE2	2.17	0.45

*Continued on next page...*

*Continued from previous page...*

Atom-1	Atom-2	Interatomic distance (Å)	Clash overlap (Å)
1:A:572:VAL:HG13	1:A:789:GLY:O	2.17	0.45
1:A:381:PRO:O	1:A:385:VAL:HG23	2.17	0.45
1:A:972:GLN:HG2	2:A:1755:HOH:O	2.16	0.45
1:A:416:ASP:O	2:A:1497:HOH:O	2.20	0.45
1:A:197:ILE:C	1:A:221:ARG:HH12	2.17	0.45
1:A:433:ALA:HB1	1:A:610:VAL:HG23	1.98	0.45
1:A:22:GLN:HE22	1:A:878:VAL:H	1.58	0.45
1:A:532:ASN:OD1	1:A:534:PRO:HD2	2.17	0.45
1:A:542:HIS:HE2	1:A:690:GLU:HG2	1.80	0.44
1:A:581:SER:HB2	1:A:737:LEU:HD11	1.99	0.44
1:A:80:ARG:HD3	1:A:673:PHE:CD2	2.52	0.44
1:A:828:GLY:HA3	1:A:838:TRP:NE1	2.32	0.44
1:A:1255:ARG:HG2	2:A:1496:HOH:O	2.16	0.44
1:A:706:TRP:O	1:A:710:HIS:HD2	2.00	0.44
1:A:905:LEU:HD23	1:A:1063:MET:CE	2.43	0.44
1:A:791:ARG:NH1	1:A:1078:CYS:SG	2.90	0.44
1:A:1224:PHE:CE2	2:A:1679:HOH:O	2.57	0.44
1:A:57:LEU:HD21	1:A:189:CYS:SG	2.58	0.44
1:A:13:ILE:HD13	1:A:163:ALA:HB3	1.98	0.44
1:A:509:ILE:HD13	1:A:538:VAL:HG21	1.99	0.44
1:A:388:GLU:HG3	2:A:1620:HOH:O	2.17	0.44
1:A:81:VAL:HG13	1:A:132:ILE:CD1	2.48	0.44
1:A:389:TYR:HD1	1:A:679:THR:HB	1.83	0.44
1:A:1177:ASN:ND2	1:A:1259:TRP:HH2	2.16	0.44
1:A:1214:ARG:HG3	1:A:1214:ARG:NH1	2.32	0.44
1:A:1029:GLU:CD	1:A:1029:GLU:H	2.20	0.44
1:A:1112:MET:CE	1:A:1150:LEU:HD11	2.47	0.44
1:A:657:ARG:NH1	1:A:657:ARG:HG2	2.30	0.44
1:A:131:ARG:HD3	2:A:1338:HOH:O	2.18	0.44
1:A:978:LEU:HG	1:A:979:MET:HE2	1.98	0.44
1:A:782:LEU:HB2	2:A:1724:HOH:O	2.17	0.44
1:A:1089:PHE:O	1:A:1093:VAL:HG23	2.18	0.44
1:A:20:THR:HG21	2:A:1568:HOH:O	2.17	0.43
1:A:1200:LEU:HD23	1:A:1201:PRO:O	2.17	0.43
1:A:223:THR:HG22	1:A:225:ALA:N	2.06	0.43
1:A:90:ASP:O	1:A:92:VAL:N	2.45	0.43
1:A:926:THR:CG2	1:A:1246:HIS:CD2	3.01	0.43
1:A:1027:THR:HG22	1:A:1030:GLU:CD	2.39	0.43
1:A:390:THR:CG2	1:A:391:GLN:HG3	2.48	0.43
1:A:603:MET:CE	1:A:651:LEU:HD23	2.49	0.43
1:A:72:TYR:O	1:A:83:ARG:HD2	2.19	0.43

*Continued on next page...*

*Continued from previous page...*

Atom-1	Atom-2	Interatomic distance (Å)	Clash overlap (Å)
1:A:1174:ARG:HG3	2:A:1281:HOH:O	2.18	0.43
1:A:990:ARG:CD	2:A:1459:HOH:O	2.66	0.43
1:A:933:TYR:CE1	1:A:934:ARG:HG3	2.53	0.43
1:A:423:ARG:NE	2:A:1497:HOH:O	2.49	0.43
1:A:201:LEU:HA	1:A:202:PRO:HD3	1.84	0.43
1:A:484:PRO:HB2	1:A:1021:GLN:HE21	1.84	0.43
1:A:329:LYS:O	1:A:333:GLU:HG3	2.19	0.43
1:A:169:ASP:HA	1:A:170:PRO:HD3	1.91	0.43
1:A:473:ILE:HG13	1:A:475:VAL:HG23	2.01	0.43
1:A:524:ARG:HG2	1:A:524:ARG:HH11	1.84	0.43
1:A:671:ASN:HD22	1:A:671:ASN:N	2.16	0.43
1:A:783:LYS:HD3	2:A:1522:HOH:O	2.12	0.43
1:A:245:LEU:HD22	1:A:367:ASP:HA	2.01	0.43
1:A:814:TRP:CE2	1:A:815:PRO:HB3	2.54	0.43
1:A:680:PHE:CD2	1:A:681:PRO:HD2	2.54	0.43
1:A:636:ARG:NE	2:A:1744:HOH:O	2.52	0.42
1:A:197:ILE:HA	1:A:221:ARG:HH11	1.83	0.42
1:A:990:ARG:HG3	2:A:1459:HOH:O	2.18	0.42
1:A:457:THR:C	1:A:491:ILE:HG13	2.40	0.42
1:A:1176:VAL:O	1:A:1176:VAL:HG13	2.19	0.42
1:A:393:PRO:CA	2:A:1527:HOH:O	2.42	0.42
1:A:221:ARG:HB2	1:A:221:ARG:HH11	1.83	0.42
1:A:581:SER:HA	1:A:738:MET:O	2.19	0.42
1:A:812:GLU:HA	1:A:813:PRO:HD3	1.80	0.42
1:A:187:LEU:HA	1:A:187:LEU:HD23	1.88	0.42
1:A:225:ALA:O	1:A:228:PRO:HD2	2.19	0.42
1:A:471:TYR:CD1	1:A:471:TYR:C	2.93	0.42
1:A:1146:LEU:HD21	1:A:1152:GLU:HG3	2.02	0.42
1:A:515:MET:HA	1:A:529:MET:HE3	2.01	0.42
1:A:1035:ASP:HB2	2:A:1690:HOH:O	2.19	0.42
1:A:702:PHE:CZ	1:A:760:ILE:HG13	2.55	0.42
1:A:948:MET:HE2	1:A:1042:ARG:HA	2.02	0.42
1:A:339:GLY:O	1:A:340:LEU:HD23	2.19	0.42
1:A:483:LEU:HD23	1:A:483:LEU:HA	1.89	0.41
1:A:603:MET:CE	1:A:648:ILE:HG23	2.50	0.41
1:A:563:VAL:HB	2:A:1551:HOH:O	2.20	0.41
1:A:1005:ASN:ND2	1:A:1263:GLU:CB	2.81	0.41
1:A:567:VAL:HG12	1:A:567:VAL:O	2.20	0.41
1:A:811:GLU:OE1	2:A:1347:HOH:O	2.22	0.41
1:A:112:TYR:HB3	1:A:215:PHE:HB3	2.01	0.41
1:A:483:LEU:HA	1:A:484:PRO:HD3	1.85	0.41

*Continued on next page...*

*Continued from previous page...*

Atom-1	Atom-2	Interatomic distance (Å)	Clash overlap (Å)
1:A:205:ALA:HA	1:A:206:PRO:HD3	1.89	0.41
1:A:300:LEU:HB2	1:A:307:LYS:O	2.20	0.41
1:A:100:VAL:CG1	1:A:101:GLU:N	2.83	0.41
1:A:659:PHE:CE2	1:A:681:PRO:HD3	2.56	0.41
1:A:984:LEU:HD11	1:A:1009:LEU:CD1	2.50	0.41
1:A:603:MET:HE3	1:A:648:ILE:HG23	2.02	0.41
1:A:389:TYR:OH	1:A:527:SER:CB	2.69	0.41
1:A:1223:ARG:HD3	2:A:1804:HOH:O	2.20	0.41
1:A:561:SER:N	2:A:1442:HOH:O	2.52	0.41
1:A:867:MET:HG3	1:A:868:TRP:N	2.35	0.41
1:A:273:THR:O	1:A:276:ILE:HG12	2.20	0.41
1:A:59:ILE:HA	1:A:60:PRO:HD3	1.92	0.41
1:A:80:ARG:CG	1:A:80:ARG:HH11	2.34	0.41
1:A:2:SER:O	1:A:4:MET:N	2.54	0.41
1:A:18:GLY:N	2:A:1550:HOH:O	2.47	0.41
1:A:1110:LEU:HD13	1:A:1121:VAL:HG11	2.01	0.41
1:A:833:LEU:HD12	1:A:838:TRP:CD2	2.56	0.41
1:A:912:ARG:NH2	2:A:1468:HOH:O	2.37	0.41
1:A:1017:TYR:C	1:A:1017:TYR:CD1	2.94	0.41
1:A:197:ILE:HA	1:A:221:ARG:NH1	2.35	0.40
1:A:90:ASP:HB2	2:A:1340:HOH:O	2.20	0.40
1:A:542:HIS:NE2	1:A:690:GLU:HG3	2.35	0.40
1:A:659:PHE:CZ	1:A:681:PRO:HD3	2.56	0.40
1:A:93:TYR:HB3	2:A:1273:HOH:O	2.22	0.40
1:A:686:ALA:O	1:A:687:THR:C	2.60	0.40
1:A:66:LYS:HB3	1:A:97:CYS:HA	2.04	0.40
1:A:1005:ASN:HB2	1:A:1130:ARG:HH22	1.86	0.40
1:A:582:ILE:HD11	1:A:753:ILE:HG21	2.03	0.40

There are no symmetry-related clashes.

## 5.3 Torsion angles [i](#)

### 5.3.1 Protein backbone [i](#)

In the following table, the Percentiles column shows the percent Ramachandran outliers of the chain as a percentile score with respect to all X-ray entries followed by that with respect to entries of similar resolution.

The Analysed column shows the number of residues for which the backbone conformation was analysed, and the total number of residues.

Mol	Chain	Analysed	Favoured	Allowed	Outliers	Percentiles
1	A	1252/1267 (99%)	1187 (95%)	54 (4%)	11 (1%)	21 37

All (11) Ramachandran outliers are listed below:

Mol	Chain	Res	Type
1	A	615	ILE
1	A	3	SER
1	A	91	ASP
1	A	498	ALA
1	A	557	PRO
1	A	687	THR
1	A	1201	PRO
1	A	218	MET
1	A	1005	ASN
1	A	99	ILE
1	A	276	ILE

### 5.3.2 Protein sidechains ⓘ

In the following table, the Percentiles column shows the percent sidechain outliers of the chain as a percentile score with respect to all X-ray entries followed by that with respect to entries of similar resolution.

The Analysed column shows the number of residues for which the sidechain conformation was analysed, and the total number of residues.

Mol	Chain	Analysed	Rotameric	Outliers	Percentiles
1	A	1076/1083 (99%)	1042 (97%)	34 (3%)	46 74

All (34) residues with a non-rotameric sidechain are listed below:

Mol	Chain	Res	Type
1	A	37	PHE
1	A	57	LEU
1	A	80	ARG
1	A	92	VAL
1	A	102	LEU
1	A	167	LEU
1	A	187	LEU
1	A	298	GLU
1	A	366	ARG
1	A	387	GLN

*Continued on next page...*

*Continued from previous page...*

Mol	Chain	Res	Type
1	A	390	THR
1	A	431	LEU
1	A	436	MET
1	A	466	LEU
1	A	470	LEU
1	A	517	LEU
1	A	536	GLN
1	A	538	VAL
1	A	557	PRO
1	A	610	VAL
1	A	807	ASN
1	A	815	PRO
1	A	845	LEU
1	A	890	TRP
1	A	894	THR
1	A	909	LEU
1	A	953	ARG
1	A	990	ARG
1	A	1033	GLU
1	A	1038	LEU
1	A	1052	LEU
1	A	1166	ASP
1	A	1182	ASP
1	A	1238	VAL

Some sidechains can be flipped to improve hydrogen bonding and reduce clashes. All (24) such sidechains are listed below:

Mol	Chain	Res	Type
1	A	22	GLN
1	A	121	ASN
1	A	146	GLN
1	A	173	GLN
1	A	255	GLN
1	A	387	GLN
1	A	448	GLN
1	A	499	ASN
1	A	504	HIS
1	A	536	GLN
1	A	628	ASN
1	A	664	ASN
1	A	671	ASN
1	A	710	HIS

*Continued on next page...*

*Continued from previous page...*

Mol	Chain	Res	Type
1	A	728	ASN
1	A	749	ASN
1	A	807	ASN
1	A	834	GLN
1	A	852	GLN
1	A	930	ASN
1	A	980	GLN
1	A	1005	ASN
1	A	1165	GLN
1	A	1246	HIS

### 5.3.3 RNA [i](#)

There are no RNA molecules in this entry.

## 5.4 Non-standard residues in protein, DNA, RNA chains [i](#)

There are no non-standard protein/DNA/RNA residues in this entry.

## 5.5 Carbohydrates [i](#)

There are no carbohydrates in this entry.

## 5.6 Ligand geometry [i](#)

There are no ligands in this entry.

## 5.7 Other polymers [i](#)

There are no such residues in this entry.

## 5.8 Polymer linkage issues [i](#)

There are no chain breaks in this entry.

## 6 Fit of model and data ⓘ

### 6.1 Protein, DNA and RNA chains ⓘ

In the following table, the column labelled ‘#RSRZ> 2’ contains the number (and percentage) of RSRZ outliers, followed by percent RSRZ outliers for the chain as percentile scores relative to all X-ray entries and entries of similar resolution. The OWAB column contains the minimum, median, 95<sup>th</sup> percentile and maximum values of the occupancy-weighted average B-factor per residue. The column labelled ‘Q< 0.9’ lists the number of (and percentage) of residues with an average occupancy less than 0.9.

Mol	Chain	Analysed	<RSRZ>	#RSRZ>2	OWAB(Å <sup>2</sup> )	Q<0.9
1	A	1253/1267 (98%)	-0.10	31 (2%) 61 65	7, 21, 44, 63	1 (0%)

All (31) RSRZ outliers are listed below:

Mol	Chain	Res	Type	RSRZ
1	A	2	SER	6.6
1	A	857	GLY	5.4
1	A	471	TYR	4.6
1	A	744	THR	4.5
1	A	855	MET	4.4
1	A	856	ILE	4.3
1	A	482	GLY	4.0
1	A	484	PRO	4.0
1	A	956	LYS	4.0
1	A	1025	ILE	3.6
1	A	483	LEU	3.2
1	A	391	GLN	3.0
1	A	859	SER	2.8
1	A	1028	ARG	2.8
1	A	952	PRO	2.7
1	A	858	GLU	2.6
1	A	746	GLY	2.6
1	A	1029	GLU	2.5
1	A	745	ALA	2.4
1	A	633	VAL	2.4
1	A	479	ASP	2.3
1	A	476	SER	2.3
1	A	635	VAL	2.2
1	A	1203	ASP	2.2
1	A	390	THR	2.2
1	A	861	GLY	2.1
1	A	636	ARG	2.1

*Continued on next page...*

*Continued from previous page...*

Mol	Chain	Res	Type	RSRZ
1	A	923	ARG	2.1
1	A	637	ALA	2.1
1	A	477	LEU	2.1
1	A	634	GLY	2.0

## 6.2 Non-standard residues in protein, DNA, RNA chains [i](#)

There are no non-standard protein/DNA/RNA residues in this entry.

## 6.3 Carbohydrates [i](#)

There are no carbohydrates in this entry.

## 6.4 Ligands [i](#)

There are no ligands in this entry.

## 6.5 Other polymers [i](#)

There are no such residues in this entry.