



Full wwPDB X-ray Structure Validation Report ⓘ

Feb 1, 2016 – 06:49 PM GMT

PDB ID : 4MUW
Title : Crystal Structure of PDE10A with Novel Keto-Benzimidazole Inhibitor
Authors : Chmait, S.; Jordan, S.
Deposited on : 2013-09-23
Resolution : 2.64 Å(reported)

This is a Full wwPDB X-ray Structure Validation Report for a publicly released PDB entry.
We welcome your comments at validation@mail.wwpdb.org
A user guide is available at
<http://wwpdb.org/validation/2016/XrayValidationReportHelp>
with specific help available everywhere you see the ⓘ symbol.

The following versions of software and data (see [references ⓘ](#)) were used in the production of this report:

MolProbity : 4.02b-467
Mogul : 1.7 (RC4), CSD as536be (2015)
Xtriage (Phenix) : 1.9-1692
EDS : rb-20026688
Percentile statistics : 20151230.v01 (using entries in the PDB archive December 30th 2015)
Refmac : 5.8.0135
CCP4 : 6.5.0
Ideal geometry (proteins) : Engh & Huber (2001)
Ideal geometry (DNA, RNA) : Parkinson et al. (1996)
Validation Pipeline (wwPDB-VP) : trunk26865

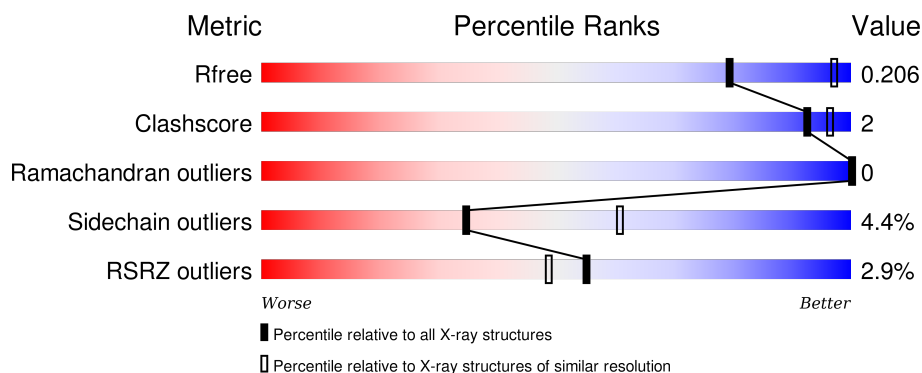
1 Overall quality at a glance

The following experimental techniques were used to determine the structure:

X-RAY DIFFRACTION

The reported resolution of this entry is 2.64 Å.

Percentile scores (ranging between 0-100) for global validation metrics of the entry are shown in the following graphic. The table shows the number of entries on which the scores are based.



Metric	Whole archive (#Entries)	Similar resolution (#Entries, resolution range(Å))
R_{free}	91344	3377 (2.68-2.60)
Clashscore	102246	3781 (2.68-2.60)
Ramachandran outliers	100387	3722 (2.68-2.60)
Sidechain outliers	100360	3722 (2.68-2.60)
RSRZ outliers	91569	3388 (2.68-2.60)

The table below summarises the geometric issues observed across the polymeric chains and their fit to the electron density. The red, orange, yellow and green segments on the lower bar indicate the fraction of residues that contain outliers for ≥ 3 , 2, 1 and 0 types of geometric quality criteria. A grey segment represents the fraction of residues that are not modelled. The numeric value for each fraction is indicated below the corresponding segment, with a dot representing fractions $\leq 5\%$. The upper red bar (where present) indicates the fraction of residues that have poor fit to the electron density. The numeric value is given above the bar.

Mol	Chain	Length	Quality of chain
1	A	351	 4% 82% 8% • 9%
1	B	351	 % 81% 5% • 13%

The following table lists non-polymeric compounds, carbohydrate monomers and non-standard residues in protein, DNA, RNA chains that are outliers for geometric or electron-density-fit criteria:

Mol	Type	Chain	Res	Chirality	Geometry	Clashes	Electron density
3	SO4	A	1004	-	X	-	-
3	SO4	A	1005	-	-	-	X
3	SO4	A	1006	-	-	-	X
3	SO4	A	1009	-	-	-	X
3	SO4	A	1010	-	-	-	X
3	SO4	B	803	-	-	-	X
3	SO4	B	805	-	-	-	X
3	SO4	B	807	-	-	-	X
3	SO4	B	809	-	-	-	X

2 Entry composition

There are 6 unique types of molecules in this entry. The entry contains 5381 atoms, of which 0 are hydrogens and 0 are deuteriums.

In the tables below, the ZeroOcc column contains the number of atoms modelled with zero occupancy, the AltConf column contains the number of residues with at least one atom in alternate conformation and the Trace column contains the number of residues modelled with at most 2 atoms.

- Molecule 1 is a protein called cAMP and cAMP-inhibited cGMP 3',5'-cyclic phosphodiesterase 10A.

Mol	Chain	Residues	Atoms					ZeroOcc	AltConf	Trace
1	A	318	Total	C	N	O	S	0	0	0
			2582	1650	439	470	23			
1	B	306	Total	C	N	O	S	0	0	0
			2481	1586	424	449	22			

There are 26 discrepancies between the modelled and reference sequences:

Chain	Residue	Modelled	Actual	Comment	Reference
A	429	MET	-	EXPRESSION TAG	UNP Q9Y233
A	430	LYS	-	EXPRESSION TAG	UNP Q9Y233
A	431	HIS	-	EXPRESSION TAG	UNP Q9Y233
A	432	HIS	-	EXPRESSION TAG	UNP Q9Y233
A	433	HIS	-	EXPRESSION TAG	UNP Q9Y233
A	434	HIS	-	EXPRESSION TAG	UNP Q9Y233
A	435	HIS	-	EXPRESSION TAG	UNP Q9Y233
A	436	HIS	-	EXPRESSION TAG	UNP Q9Y233
A	437	HIS	-	EXPRESSION TAG	UNP Q9Y233
A	438	ASP	-	EXPRESSION TAG	UNP Q9Y233
A	439	GLU	-	EXPRESSION TAG	UNP Q9Y233
A	440	VAL	-	EXPRESSION TAG	UNP Q9Y233
A	441	ASP	-	EXPRESSION TAG	UNP Q9Y233
B	429	MET	-	EXPRESSION TAG	UNP Q9Y233
B	430	LYS	-	EXPRESSION TAG	UNP Q9Y233
B	431	HIS	-	EXPRESSION TAG	UNP Q9Y233
B	432	HIS	-	EXPRESSION TAG	UNP Q9Y233
B	433	HIS	-	EXPRESSION TAG	UNP Q9Y233
B	434	HIS	-	EXPRESSION TAG	UNP Q9Y233
B	435	HIS	-	EXPRESSION TAG	UNP Q9Y233
B	436	HIS	-	EXPRESSION TAG	UNP Q9Y233
B	437	HIS	-	EXPRESSION TAG	UNP Q9Y233
B	438	ASP	-	EXPRESSION TAG	UNP Q9Y233
B	439	GLU	-	EXPRESSION TAG	UNP Q9Y233

Continued on next page...

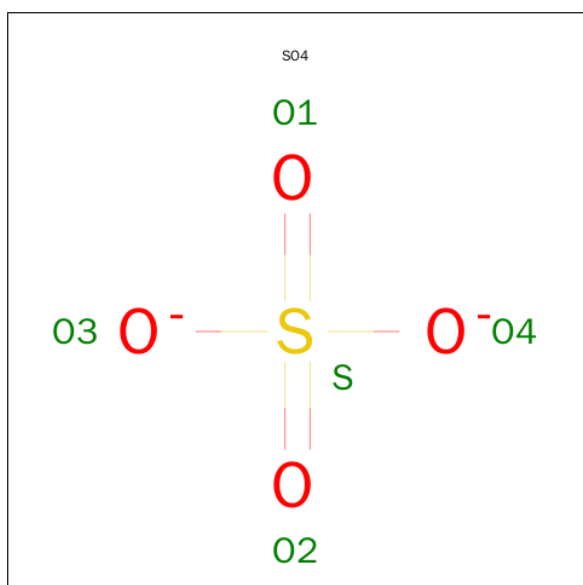
Continued from previous page...

Chain	Residue	Modelled	Actual	Comment	Reference
B	440	VAL	-	EXPRESSION TAG	UNP Q9Y233
B	441	ASP	-	EXPRESSION TAG	UNP Q9Y233

- Molecule 2 is ZINC ION (three-letter code: ZN) (formula: Zn).

Mol	Chain	Residues	Atoms		ZeroOcc	AltConf
2	B	2	Total	Zn	0	0
			2	2		
2	A	2	Total	Zn	0	0
			2	2		

- Molecule 3 is SULFATE ION (three-letter code: SO4) (formula: O₄S).



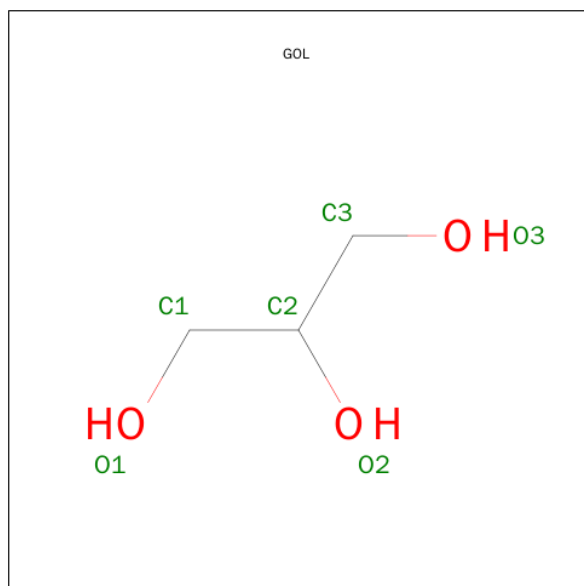
Mol	Chain	Residues	Atoms			ZeroOcc	AltConf
3	A	1	Total	O	S	0	0
			5	4	1		
3	A	1	Total	O	S	0	0
			5	4	1		
3	A	1	Total	O	S	0	0
			5	4	1		
3	A	1	Total	O	S	0	0
			5	4	1		
3	A	1	Total	O	S	0	0
			5	4	1		

Continued on next page...

Continued from previous page...

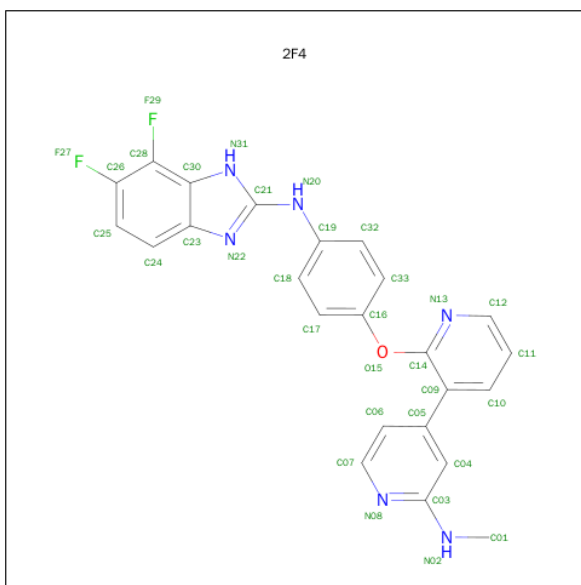
Mol	Chain	Residues	Atoms	ZeroOcc	AltConf
3	A	1	Total O S 5 4 1	0	0
3	A	1	Total O S 5 4 1	0	0
3	B	1	Total O S 5 4 1	0	0
3	B	1	Total O S 5 4 1	0	0
3	B	1	Total O S 5 4 1	0	0
3	B	1	Total O S 5 4 1	0	0
3	B	1	Total O S 5 4 1	0	0
3	B	1	Total O S 5 4 1	0	0
3	B	1	Total O S 5 4 1	0	0

- Molecule 4 is GLYCEROL (three-letter code: GOL) (formula: C₃H₈O₃).



Mol	Chain	Residues	Atoms	ZeroOcc	AltConf
4	A	1	Total C O 6 3 3	0	0

- Molecule 5 is 2-{4-[(6,7-DIFLUORO-1H-BENZIMIDAZOL-2-YL)AMINO]PHENOXY}-N-METHYL-3,4'-BIPYRIDIN-2'-AMINE (three-letter code: 2F4) (formula: C₂₄H₁₈F₂N₆O).



Mol	Chain	Residues	Atoms					ZeroOcc	AltConf
5	A	1	Total	C	F	N	O	0	0
			33	24	2	6	1		
5	B	1	Total	C	F	N	O	0	0
			33	24	2	6	1		

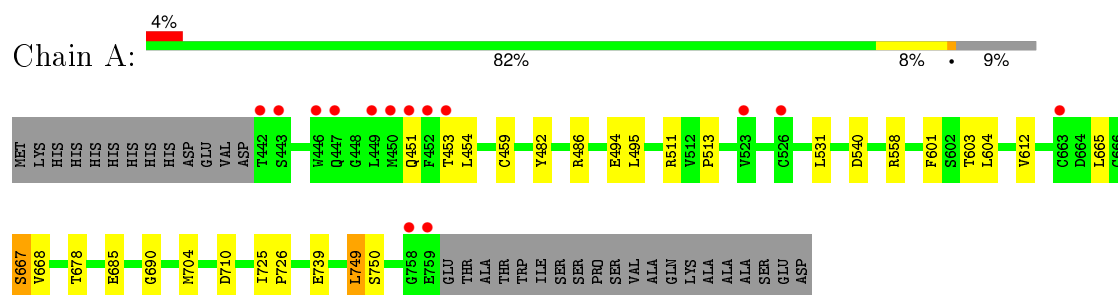
- Molecule 6 is water.

Mol	Chain	Residues	Atoms		ZeroOcc	AltConf
6	A	87	Total	O	0	0
			87	87		
6	B	80	Total	O	0	0
			80	80		

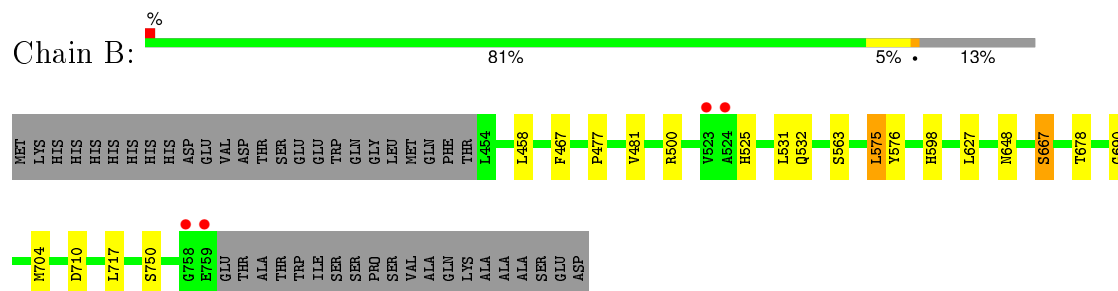
3 Residue-property plots [i](#)

These plots are drawn for all protein, RNA and DNA chains in the entry. The first graphic for a chain summarises the proportions of errors displayed in the second graphic. The second graphic shows the sequence view annotated by issues in geometry and electron density. Residues are color-coded according to the number of geometric quality criteria for which they contain at least one outlier: green = 0, yellow = 1, orange = 2 and red = 3 or more. A red dot above a residue indicates a poor fit to the electron density ($\text{RSRZ} > 2$). Stretches of 2 or more consecutive residues without any outlier are shown as a green connector. Residues present in the sample, but not in the model, are shown in grey.

- Molecule 1: cAMP and cAMP-inhibited cGMP 3',5'-cyclic phosphodiesterase 10A



- Molecule 1: cAMP and cAMP-inhibited cGMP 3',5'-cyclic phosphodiesterase 10A



4 Data and refinement statistics

Property	Value	Source
Space group	F 2 3	Depositor
Cell constants a, b, c, α , β , γ	252.66Å 252.66Å 252.66Å 90.00° 90.00° 90.00°	Depositor
Resolution (Å)	29.19 – 2.64 29.17 – 2.64	Depositor EDS
% Data completeness (in resolution range)	99.5 (29.19-2.64) 99.5 (29.17-2.64)	Depositor EDS
R_{merge}	(Not available)	Depositor
R_{sym}	(Not available)	Depositor
$\langle I/\sigma(I) \rangle$ ¹	2.65 (at 2.64Å)	Xtriage
Refinement program	REFMAC 5.7.0032	Depositor
R, R_{free}	0.171 , 0.196 0.185 , 0.206	Depositor DCC
R_{free} test set	1957 reflections (5.28%)	DCC
Wilson B-factor (Å ²)	51.3	Xtriage
Anisotropy	0.000	Xtriage
Bulk solvent k_{sol} (e/Å ³), B_{sol} (Å ²)	0.33 , 27.5	EDS
Estimated twinning fraction	0.046 for k,h,-l	Xtriage
L-test for twinning ²	$\langle L \rangle = 0.52$, $\langle L^2 \rangle = 0.36$	Xtriage
Outliers	1 of 39014 reflections (0.003%)	Xtriage
F_o, F_c correlation	0.96	EDS
Total number of atoms	5381	wwPDB-VP
Average B, all atoms (Å ²)	50.0	wwPDB-VP

Xtriage's analysis on translational NCS is as follows: *The largest off-origin peak in the Patterson function is 2.29% of the height of the origin peak. No significant pseudotranslation is detected.*

¹Intensities estimated from amplitudes.

²Theoretical values of $\langle |L| \rangle$, $\langle L^2 \rangle$ for acentric reflections are 0.5, 0.375 respectively for untwinned datasets, and 0.333, 0.2 for perfectly twinned datasets.

5 Model quality [i](#)

5.1 Standard geometry [i](#)

Bond lengths and bond angles in the following residue types are not validated in this section: GOL, ZN, SO4, 2F4

The Z score for a bond length (or angle) is the number of standard deviations the observed value is removed from the expected value. A bond length (or angle) with $|Z| > 5$ is considered an outlier worth inspection. RMSZ is the root-mean-square of all Z scores of the bond lengths (or angles).

Mol	Chain	Bond lengths		Bond angles	
		RMSZ	$\# Z > 5$	RMSZ	$\# Z > 5$
1	A	0.44	0/2646	0.62	0/3583
1	B	0.44	0/2542	0.61	0/3442
All	All	0.44	0/5188	0.62	0/7025

There are no bond length outliers.

There are no bond angle outliers.

There are no chirality outliers.

There are no planarity outliers.

5.2 Too-close contacts [i](#)

In the following table, the Non-H and H(model) columns list the number of non-hydrogen atoms and hydrogen atoms in the chain respectively. The H(added) column lists the number of hydrogen atoms added and optimized by MolProbity. The Clashes column lists the number of clashes within the asymmetric unit, whereas Symm-Clashes lists symmetry related clashes.

Mol	Chain	Non-H	H(model)	H(added)	Clashes	Symm-Clashes
1	A	2582	0	2543	9	0
1	B	2481	0	2454	9	0
2	A	2	0	0	0	0
2	B	2	0	0	0	0
3	A	40	0	0	0	0
3	B	35	0	0	0	0
4	A	6	0	8	0	0
5	A	33	0	18	1	0
5	B	33	0	18	1	0
6	A	87	0	0	1	0
6	B	80	0	0	1	0
All	All	5381	0	5041	20	0

The all-atom clashscore is defined as the number of clashes found per 1000 atoms (including hydrogen atoms). The all-atom clashscore for this structure is 2.

All (20) close contacts within the same asymmetric unit are listed below, sorted by their clash magnitude.

Atom-1	Atom-2	Interatomic distance (Å)	Clash overlap (Å)
1:B:710:ASP:HB3	6:B:946:HOH:O	1.82	0.79
1:A:710:ASP:HB3	6:A:1151:HOH:O	1.91	0.70
1:B:467:PHE:HB3	1:B:525:HIS:CE1	2.35	0.61
5:B:810:2F4:H12	5:B:810:2F4:N22	2.17	0.60
1:B:532:GLN:HE21	1:B:532:GLN:HA	1.70	0.56
1:B:532:GLN:NE2	1:B:532:GLN:HA	2.24	0.53
1:B:690:GLY:HA3	1:B:704:MET:O	2.11	0.49
1:A:601:PHE:HB3	1:A:604:LEU:HD22	1.95	0.48
1:A:513:PRO:HD2	1:A:685:GLU:HG2	1.95	0.48
1:A:690:GLY:HA3	1:A:704:MET:O	2.14	0.47
5:A:1012:2F4:H12	5:A:1012:2F4:N22	2.28	0.47
1:A:667:SER:HB2	1:A:678:THR:HG21	1.98	0.45
1:B:477:PRO:O	1:B:481:VAL:HG23	2.18	0.44
1:B:667:SER:HB2	1:B:678:THR:HG21	2.00	0.44
1:A:725:ILE:HB	1:A:726:PRO:HD3	2.00	0.43
1:A:482:TYR:CE2	1:A:486:ARG:HD3	2.54	0.42
1:A:665:LEU:O	1:A:668:VAL:HG22	2.20	0.42
1:B:500:ARG:HG2	1:B:598:HIS:CE1	2.55	0.42
1:A:749:LEU:HD12	1:A:749:LEU:O	2.20	0.41
1:B:575:LEU:HD13	1:B:576:TYR:CZ	2.56	0.41

There are no symmetry-related clashes.

5.3 Torsion angles

5.3.1 Protein backbone

In the following table, the Percentiles column shows the percent Ramachandran outliers of the chain as a percentile score with respect to all X-ray entries followed by that with respect to entries of similar resolution.

The Analysed column shows the number of residues for which the backbone conformation was analysed, and the total number of residues.

Mol	Chain	Analysed	Favoured	Allowed	Outliers	Percentiles	
1	A	316/351 (90%)	312 (99%)	4 (1%)	0	100	100

Continued on next page...

Continued from previous page...

Mol	Chain	Analysed	Favoured	Allowed	Outliers	Percentiles	
1	B	304/351 (87%)	301 (99%)	3 (1%)	0	100	100
All	All	620/702 (88%)	613 (99%)	7 (1%)	0	100	100

There are no Ramachandran outliers to report.

5.3.2 Protein sidechains ⓘ

In the following table, the Percentiles column shows the percent sidechain outliers of the chain as a percentile score with respect to all X-ray entries followed by that with respect to entries of similar resolution.

The Analysed column shows the number of residues for which the sidechain conformation was analysed, and the total number of residues.

Mol	Chain	Analysed	Rotameric	Outliers	Percentiles	
1	A	287/315 (91%)	271 (94%)	16 (6%)	26	48
1	B	276/315 (88%)	267 (97%)	9 (3%)	45	72
All	All	563/630 (89%)	538 (96%)	25 (4%)	35	61

All (25) residues with a non-rotameric sidechain are listed below:

Mol	Chain	Res	Type
1	A	451	GLN
1	A	453	THR
1	A	454	LEU
1	A	459	CYS
1	A	494	GLU
1	A	495	LEU
1	A	511	ARG
1	A	531	LEU
1	A	540	ASP
1	A	558	ARG
1	A	603	THR
1	A	612	VAL
1	A	667	SER
1	A	739	GLU
1	A	749	LEU
1	A	750	SER
1	B	458	LEU
1	B	531	LEU

Continued on next page...

Continued from previous page...

Mol	Chain	Res	Type
1	B	563	SER
1	B	575	LEU
1	B	627	LEU
1	B	648	ASN
1	B	667	SER
1	B	717	LEU
1	B	750	SER

Some sidechains can be flipped to improve hydrogen bonding and reduce clashes. All (10) such sidechains are listed below:

Mol	Chain	Res	Type
1	A	451	GLN
1	A	532	GLN
1	A	594	GLN
1	A	714	GLN
1	B	532	GLN
1	B	611	GLN
1	B	634	GLN
1	B	640	GLN
1	B	648	ASN
1	B	714	GLN

5.3.3 RNA [i](#)

There are no RNA molecules in this entry.

5.4 Non-standard residues in protein, DNA, RNA chains [i](#)

There are no non-standard protein/DNA/RNA residues in this entry.

5.5 Carbohydrates [i](#)

There are no carbohydrates in this entry.

5.6 Ligand geometry [i](#)

Of 22 ligands modelled in this entry, 4 are monoatomic - leaving 18 for Mogul analysis.

In the following table, the Counts columns list the number of bonds (or angles) for which Mogul statistics could be retrieved, the number of bonds (or angles) that are observed in the model and the number of bonds (or angles) that are defined in the chemical component dictionary. The Link column lists molecule types, if any, to which the group is linked. The Z score for a bond length (or angle) is the number of standard deviations the observed value is removed from the expected value. A bond length (or angle) with $|Z| > 2$ is considered an outlier worth inspection. RMSZ is the root-mean-square of all Z scores of the bond lengths (or angles).

Mol	Type	Chain	Res	Link	Bond lengths			Bond angles		
					Counts	RMSZ	$\# Z > 2$	Counts	RMSZ	$\# Z > 2$
3	SO4	A	1003	-	4,4,4	0.41	0	6,6,6	0.30	0
3	SO4	A	1004	-	4,4,4	0.32	0	6,6,6	3.45	4 (66%)
3	SO4	A	1005	-	4,4,4	0.33	0	6,6,6	0.16	0
3	SO4	A	1006	-	4,4,4	0.18	0	6,6,6	0.14	0
3	SO4	A	1007	-	4,4,4	0.30	0	6,6,6	0.22	0
3	SO4	A	1008	-	4,4,4	0.42	0	6,6,6	0.18	0
3	SO4	A	1009	-	4,4,4	0.29	0	6,6,6	0.15	0
3	SO4	A	1010	-	4,4,4	0.37	0	6,6,6	0.25	0
4	GOL	A	1011	-	5,5,5	0.34	0	5,5,5	0.37	0
5	2F4	A	1012	-	36,37,37	1.63	5 (13%)	41,52,52	1.33	7 (17%)
3	SO4	B	803	-	4,4,4	0.17	0	6,6,6	0.22	0
3	SO4	B	804	-	4,4,4	0.26	0	6,6,6	0.28	0
3	SO4	B	805	-	4,4,4	0.32	0	6,6,6	0.18	0
3	SO4	B	806	-	4,4,4	0.49	0	6,6,6	0.21	0
3	SO4	B	807	-	4,4,4	0.34	0	6,6,6	0.19	0
3	SO4	B	808	-	4,4,4	0.25	0	6,6,6	0.34	0
3	SO4	B	809	-	4,4,4	0.30	0	6,6,6	0.21	0
5	2F4	B	810	-	36,37,37	1.90	7 (19%)	41,52,52	1.57	6 (14%)

In the following table, the Chirals column lists the number of chiral outliers, the number of chiral centers analysed, the number of these observed in the model and the number defined in the chemical component dictionary. Similar counts are reported in the Torsion and Rings columns. '-' means no outliers of that kind were identified.

Mol	Type	Chain	Res	Link	Chirals	Torsions	Rings
3	SO4	A	1003	-	-	0/0/0/0	0/0/0/0
3	SO4	A	1004	-	-	0/0/0/0	0/0/0/0
3	SO4	A	1005	-	-	0/0/0/0	0/0/0/0
3	SO4	A	1006	-	-	0/0/0/0	0/0/0/0
3	SO4	A	1007	-	-	0/0/0/0	0/0/0/0
3	SO4	A	1008	-	-	0/0/0/0	0/0/0/0
3	SO4	A	1009	-	-	0/0/0/0	0/0/0/0
3	SO4	A	1010	-	-	0/0/0/0	0/0/0/0
4	GOL	A	1011	-	-	0/4/4/4	0/0/0/0

Continued on next page...

Continued from previous page...

Mol	Type	Chain	Res	Link	Chirals	Torsions	Rings
5	2F4	A	1012	-	-	0/12/14/14	0/5/5/5
3	SO4	B	803	-	-	0/0/0/0	0/0/0/0
3	SO4	B	804	-	-	0/0/0/0	0/0/0/0
3	SO4	B	805	-	-	0/0/0/0	0/0/0/0
3	SO4	B	806	-	-	0/0/0/0	0/0/0/0
3	SO4	B	807	-	-	0/0/0/0	0/0/0/0
3	SO4	B	808	-	-	0/0/0/0	0/0/0/0
3	SO4	B	809	-	-	0/0/0/0	0/0/0/0
5	2F4	B	810	-	-	0/12/14/14	0/5/5/5

All (12) bond length outliers are listed below:

Mol	Chain	Res	Type	Atoms	Z	Observed(Å)	Ideal(Å)
5	B	810	2F4	C09-C05	-6.84	1.38	1.49
5	A	1012	2F4	C09-C05	-6.73	1.38	1.49
5	B	810	2F4	C09-C14	-3.99	1.37	1.41
5	B	810	2F4	F29-C28	-3.68	1.28	1.35
5	B	810	2F4	C30-N31	-2.77	1.34	1.38
5	A	1012	2F4	C09-C14	-2.71	1.38	1.41
5	B	810	2F4	C30-C23	-2.41	1.34	1.42
5	A	1012	2F4	F29-C28	-2.05	1.31	1.35
5	B	810	2F4	C10-C09	-2.05	1.36	1.39
5	A	1012	2F4	C19-N20	2.09	1.45	1.40
5	B	810	2F4	C21-N20	3.42	1.42	1.36
5	A	1012	2F4	C21-N20	4.30	1.43	1.36

All (17) bond angle outliers are listed below:

Mol	Chain	Res	Type	Atoms	Z	Observed(°)	Ideal(°)
3	A	1004	SO4	O2-S-O1	-6.65	88.41	109.50
5	B	810	2F4	C01-N02-C03	-5.11	118.56	122.98
5	A	1012	2F4	C01-N02-C03	-3.55	119.90	122.98
3	A	1004	SO4	O4-S-O2	-2.92	83.00	110.19
5	B	810	2F4	C25-C26-C28	-2.65	118.68	121.26
5	A	1012	2F4	C06-C07-N08	-2.57	120.97	123.90
5	A	1012	2F4	C04-C03-N08	-2.51	120.25	123.06
5	B	810	2F4	C04-C03-N08	-2.51	120.25	123.06
3	A	1004	SO4	O3-S-O2	-2.50	86.90	110.19
5	A	1012	2F4	C16-O15-C14	-2.24	114.09	118.81
5	B	810	2F4	C19-N20-C21	-2.03	123.81	129.19
5	A	1012	2F4	N02-C03-N08	2.07	120.54	116.78
5	A	1012	2F4	C05-C04-C03	2.15	120.62	118.57

Continued on next page...

Continued from previous page...

Mol	Chain	Res	Type	Atoms	Z	Observed(°)	Ideal(°)
5	A	1012	2F4	C07-N08-C03	2.16	120.27	117.28
5	B	810	2F4	N02-C03-N08	2.63	121.55	116.78
3	A	1004	SO4	O4-S-O3	3.21	122.05	108.98
5	B	810	2F4	C05-C04-C03	3.73	122.13	118.57

There are no chirality outliers.

There are no torsion outliers.

There are no ring outliers.

2 monomers are involved in 2 short contacts:

Mol	Chain	Res	Type	Clashes	Symm-Clashes
5	A	1012	2F4	1	0
5	B	810	2F4	1	0

5.7 Other polymers [i](#)

There are no such residues in this entry.

5.8 Polymer linkage issues [i](#)

There are no chain breaks in this entry.

6 Fit of model and data [i](#)

6.1 Protein, DNA and RNA chains [i](#)

In the following table, the column labelled ‘#RSRZ> 2’ contains the number (and percentage) of RSRZ outliers, followed by percent RSRZ outliers for the chain as percentile scores relative to all X-ray entries and entries of similar resolution. The OWAB column contains the minimum, median, 95th percentile and maximum values of the occupancy-weighted average B-factor per residue. The column labelled ‘Q< 0.9’ lists the number of (and percentage) of residues with an average occupancy less than 0.9.

Mol	Chain	Analysed	<RSRZ>	#RSRZ>2	OWAB(Å ²)	Q<0.9
1	A	318/351 (90%)	-0.17	14 (4%) 38 31	35, 47, 71, 124	0
1	B	306/351 (87%)	-0.23	4 (1%) 79 76	34, 47, 63, 88	0
All	All	624/702 (88%)	-0.20	18 (2%) 55 49	34, 47, 68, 124	0

All (18) RSRZ outliers are listed below:

Mol	Chain	Res	Type	RSRZ
1	A	450	MET	5.2
1	A	759	GLU	4.8
1	A	446	TRP	4.5
1	A	443	SER	3.8
1	A	758	GLY	3.7
1	A	452	PHE	3.0
1	A	453	THR	2.9
1	A	447	GLN	2.8
1	A	449	LEU	2.8
1	B	759	GLU	2.7
1	A	442	THR	2.6
1	A	523	VAL	2.6
1	B	523	VAL	2.6
1	A	451	GLN	2.5
1	B	758	GLY	2.2
1	A	526	CYS	2.1
1	B	524	ALA	2.1
1	A	663	CYS	2.1

6.2 Non-standard residues in protein, DNA, RNA chains [i](#)

There are no non-standard protein/DNA/RNA residues in this entry.

6.3 Carbohydrates ⓘ

There are no carbohydrates in this entry.

6.4 Ligands ⓘ

In the following table, the Atoms column lists the number of modelled atoms in the group and the number defined in the chemical component dictionary. LLDF column lists the quality of electron density of the group with respect to its neighbouring residues in protein, DNA or RNA chains. The B-factors column lists the minimum, median, 95th percentile and maximum values of B factors of atoms in the group. The column labelled 'Q< 0.9' lists the number of atoms with occupancy less than 0.9.

Mol	Type	Chain	Res	Atoms	RSCC	RSR	LLDF	B-factors(Å ²)	Q<0.9
3	SO4	A	1006	5/5	0.94	0.67	26.25	31,32,35,37	5
3	SO4	A	1005	5/5	0.81	0.60	23.56	51,52,54,56	5
3	SO4	B	807	5/5	0.75	0.56	15.49	54,55,58,59	5
3	SO4	B	803	5/5	0.87	0.52	11.20	42,42,44,44	5
3	SO4	B	809	5/5	0.86	0.46	8.90	51,53,54,56	5
3	SO4	B	805	5/5	0.89	0.36	5.91	34,34,36,38	5
3	SO4	A	1010	5/5	0.83	0.45	4.43	43,43,45,47	5
3	SO4	A	1009	5/5	0.97	0.37	2.48	42,44,46,49	5
5	2F4	A	1012	33/33	0.90	0.21	1.25	47,60,70,72	0
3	SO4	A	1003	5/5	0.92	0.16	0.50	64,66,68,72	0
5	2F4	B	810	33/33	0.91	0.17	0.10	51,62,76,78	0
2	ZN	B	802	1/1	0.99	0.17	-0.38	61,61,61,61	0
3	SO4	A	1004	5/5	0.99	0.11	-0.78	48,49,49,50	0
3	SO4	B	806	5/5	0.98	0.10	-0.79	57,58,60,60	0
2	ZN	A	1001	1/1	0.98	0.17	-0.84	51,51,51,51	0
2	ZN	A	1002	1/1	0.99	0.14	-0.93	56,56,56,56	0
2	ZN	B	801	1/1	0.99	0.16	-	50,50,50,50	0
4	GOL	A	1011	6/6	0.85	0.41	-	65,69,70,71	0
3	SO4	A	1008	5/5	0.95	0.30	-	33,33,35,38	5
3	SO4	A	1007	5/5	0.90	0.26	-	43,45,46,47	5
3	SO4	B	808	5/5	0.93	0.39	-	36,38,39,41	5
3	SO4	B	804	5/5	0.89	0.32	-	33,34,37,37	5

6.5 Other polymers ⓘ

There are no such residues in this entry.