



wwPDB X-ray Structure Validation Summary Report ⓘ

Feb 1, 2016 – 10:44 AM GMT

PDB ID : 3MW9
Title : Bovine glutamate dehydrogenase complexed with NADH, GTP, glutamate
Authors : Smith, T.J.; Peterson, P.
Deposited on : 2010-05-05
Resolution : 2.40 Å(reported)

This is a wwPDB X-ray Structure Validation Summary Report for a publicly released PDB entry.
We welcome your comments at validation@mail.wwpdb.org
A user guide is available at
<http://wwpdb.org/validation/2016/XrayValidationReportHelp>
with specific help available everywhere you see the ⓘ symbol.

The following versions of software and data (see [references ⓘ](#)) were used in the production of this report:

MolProbity : 4.02b-467
Mogul : 1.7 (RC4), CSD as536be (2015)
Xtriage (Phenix) : 1.9-1692
EDS : rb-20026688
Percentile statistics : 20151230.v01 (using entries in the PDB archive December 30th 2015)
Refmac : 5.8.0135
CCP4 : 6.5.0
Ideal geometry (proteins) : Engh & Huber (2001)
Ideal geometry (DNA, RNA) : Parkinson et al. (1996)
Validation Pipeline (wwPDB-VP) : trunk26865

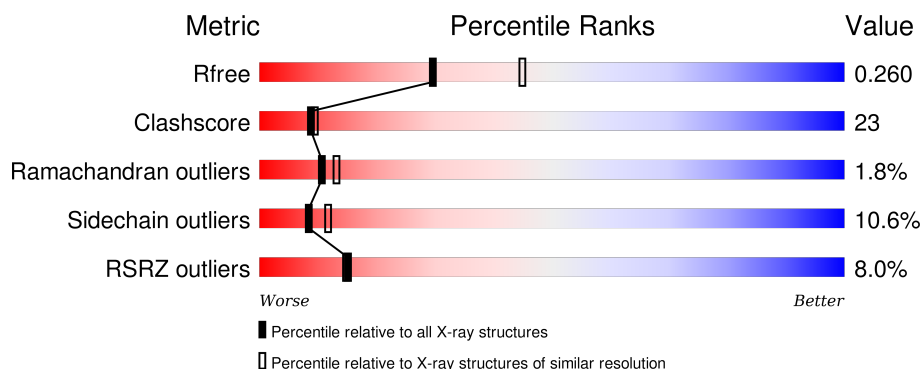
1 Overall quality at a glance ⓘ

The following experimental techniques were used to determine the structure:

X-RAY DIFFRACTION

The reported resolution of this entry is 2.40 Å.

Percentile scores (ranging between 0-100) for global validation metrics of the entry are shown in the following graphic. The table shows the number of entries on which the scores are based.




Metric	Whole archive (#Entries)	Similar resolution (#Entries, resolution range(Å))
R_{free}	91344	2919 (2.40-2.40)
Clashscore	102246	3407 (2.40-2.40)
Ramachandran outliers	100387	3351 (2.40-2.40)
Sidechain outliers	100360	3352 (2.40-2.40)
RSRZ outliers	91569	2928 (2.40-2.40)

The table below summarises the geometric issues observed across the polymeric chains and their fit to the electron density. The red, orange, yellow and green segments on the lower bar indicate the fraction of residues that contain outliers for ≥ 3 , 2, 1 and 0 types of geometric quality criteria. A grey segment represents the fraction of residues that are not modelled. The numeric value for each fraction is indicated below the corresponding segment, with a dot representing fractions $\leq 5\%$. The upper red bar (where present) indicates the fraction of residues that have poor fit to the electron density. The numeric value is given above the bar.

Mol	Chain	Length	Quality of chain
1	A	501	<div> <div>7%</div> <div>64%</div> <div>28%</div> <div>7%</div> </div>
1	B	501	<div> <div>7%</div> <div>67%</div> <div>27%</div> <div>6%</div> </div>
1	C	501	<div> <div>9%</div> <div>67%</div> <div>26%</div> <div>7%</div> </div>
1	D	501	<div> <div>8%</div> <div>62%</div> <div>32%</div> <div>6%</div> </div>
1	E	501	<div> <div>9%</div> <div>62%</div> <div>32%</div> <div>7%</div> </div>

Continued on next page...

Continued from previous page...

Mol	Chain	Length	Quality of chain
1	F	501	

The following table lists non-polymeric compounds, carbohydrate monomers and non-standard residues in protein, DNA, RNA chains that are outliers for geometric or electron-density-fit criteria:

Mol	Type	Chain	Res	Chirality	Geometry	Clashes	Electron density
2	GLU	A	601	-	-	X	-
2	GLU	B	601	-	-	X	-
2	GLU	C	601	-	-	X	-
2	GLU	D	601	-	-	X	-
2	GLU	E	601	-	-	X	-
2	GLU	F	601	-	-	X	-
3	NAI	A	603	X	-	X	-
3	NAI	A	604	X	-	-	-
3	NAI	B	603	X	-	-	-
3	NAI	C	603	X	-	-	-
3	NAI	C	604	X	-	-	-
3	NAI	C	605	X	-	-	-
3	NAI	D	603	X	-	X	-
3	NAI	D	605	X	-	-	-
3	NAI	E	603	X	-	-	-
3	NAI	F	604	X	-	-	-
4	GTP	C	602	X	-	-	-
4	GTP	D	602	X	-	-	-
4	GTP	F	603	X	-	-	-

2 Entry composition [i](#)

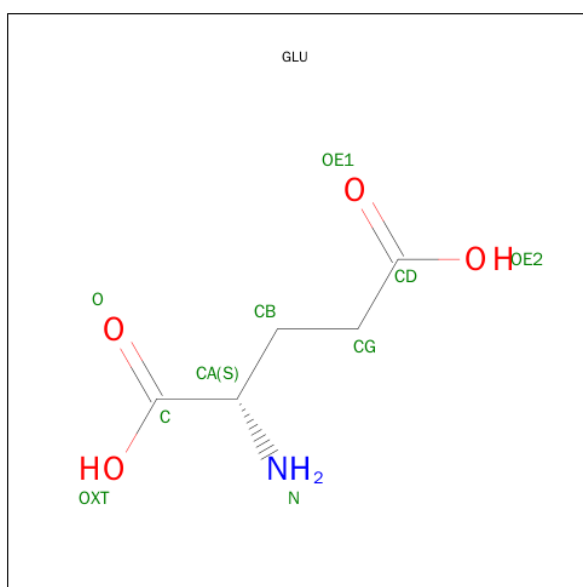
There are 5 unique types of molecules in this entry. The entry contains 24707 atoms, of which 0 are hydrogens and 0 are deuteriums.

In the tables below, the ZeroOcc column contains the number of atoms modelled with zero occupancy, the AltConf column contains the number of residues with at least one atom in alternate conformation and the Trace column contains the number of residues modelled with at most 2 atoms.

- Molecule 1 is a protein called Glutamate dehydrogenase 1.

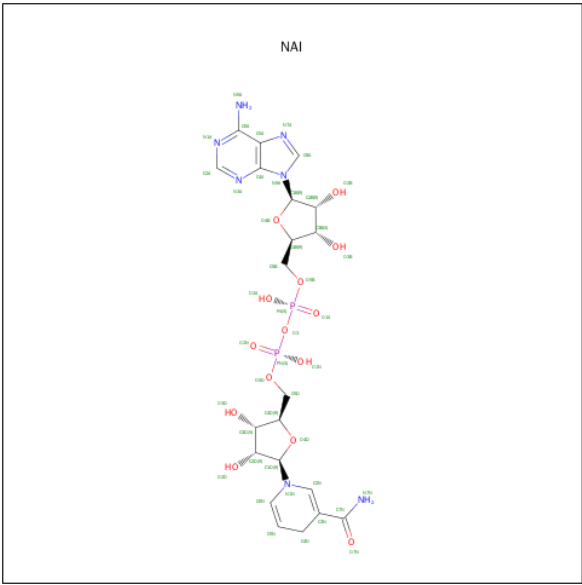
Mol	Chain	Residues	Atoms					ZeroOcc	AltConf	Trace
1	A	501	Total	C	N	O	S	0	0	0
			3922	2476	687	740	19			
1	B	501	Total	C	N	O	S	0	0	0
			3922	2476	687	740	19			
1	C	501	Total	C	N	O	S	0	0	0
			3922	2476	687	740	19			
1	D	501	Total	C	N	O	S	0	0	0
			3922	2476	687	740	19			
1	E	501	Total	C	N	O	S	0	0	0
			3922	2476	687	740	19			
1	F	501	Total	C	N	O	S	0	0	0
			3922	2476	687	740	19			

- Molecule 2 is GLUTAMIC ACID (three-letter code: GLU) (formula: $C_5H_9NO_4$).



Mol	Chain	Residues	Atoms				ZeroOcc	AltConf
2	A	1	Total	C	N	O	0	0
			10	5	1	4		
2	B	1	Total	C	N	O	0	0
			10	5	1	4		
2	C	1	Total	C	N	O	0	0
			10	5	1	4		
2	D	1	Total	C	N	O	0	0
			10	5	1	4		
2	E	1	Total	C	N	O	0	0
			10	5	1	4		
2	F	1	Total	C	N	O	0	0
			10	5	1	4		

- Molecule 3 is 1,4-DIHYDRONICOTINAMIDE ADENINE DINUCLEOTIDE (three-letter code: NAI) (formula: C₂₁H₂₉N₇O₁₄P₂).



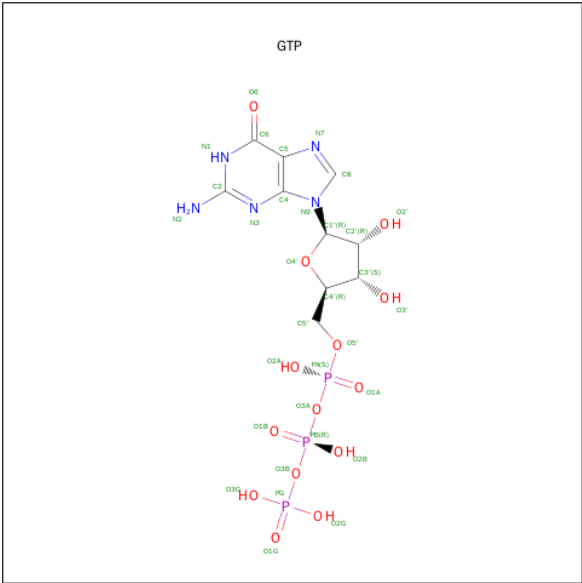
Mol	Chain	Residues	Atoms					ZeroOcc	AltConf
3	A	1	Total	C	N	O	P	0	0
			44	21	7	14	2		
3	A	1	Total	C	N	O	P	9	0
			44	21	7	14	2		
3	B	1	Total	C	N	O	P	0	0
			44	21	7	14	2		
3	C	1	Total	C	N	O	P	11	0
			44	21	7	14	2		
3	C	1	Total	C	N	O	P	0	0
			44	21	7	14	2		

Continued on next page...

Continued from previous page...

Mol	Chain	Residues	Atoms					ZeroOcc	AltConf
3	C	1	Total	C	N	O	P	6	0
			44	21	7	14	2		
3	D	1	Total	C	N	O	P	0	0
			44	21	7	14	2		
3	D	1	Total	C	N	O	P	9	0
			44	21	7	14	2		
3	D	1	Total	C	N	O	P	9	0
			44	21	7	14	2		
3	E	1	Total	C	N	O	P	0	0
			44	21	7	14	2		
3	F	1	Total	C	N	O	P	9	0
			44	21	7	14	2		
3	F	1	Total	C	N	O	P	0	0
			44	21	7	14	2		

- Molecule 4 is GUANOSINE-5'-TRIPHOSPHATE (three-letter code: GTP) (formula: C₁₀H₁₆N₅O₁₄P₃).



Mol	Chain	Residues	Atoms					ZeroOcc	AltConf
4	A	1	Total	C	N	O	P	0	0
			32	10	5	14	3		
4	B	1	Total	C	N	O	P	0	0
			32	10	5	14	3		
4	C	1	Total	C	N	O	P	0	0
			32	10	5	14	3		
4	D	1	Total	C	N	O	P	0	0
			32	10	5	14	3		

Continued on next page...

Continued from previous page...

Mol	Chain	Residues	Atoms					ZeroOcc	AltConf
4	E	1	Total	C	N	O	P	0	0
			32	10	5	14	3		
4	F	1	Total	C	N	O	P	0	0
			32	10	5	14	3		

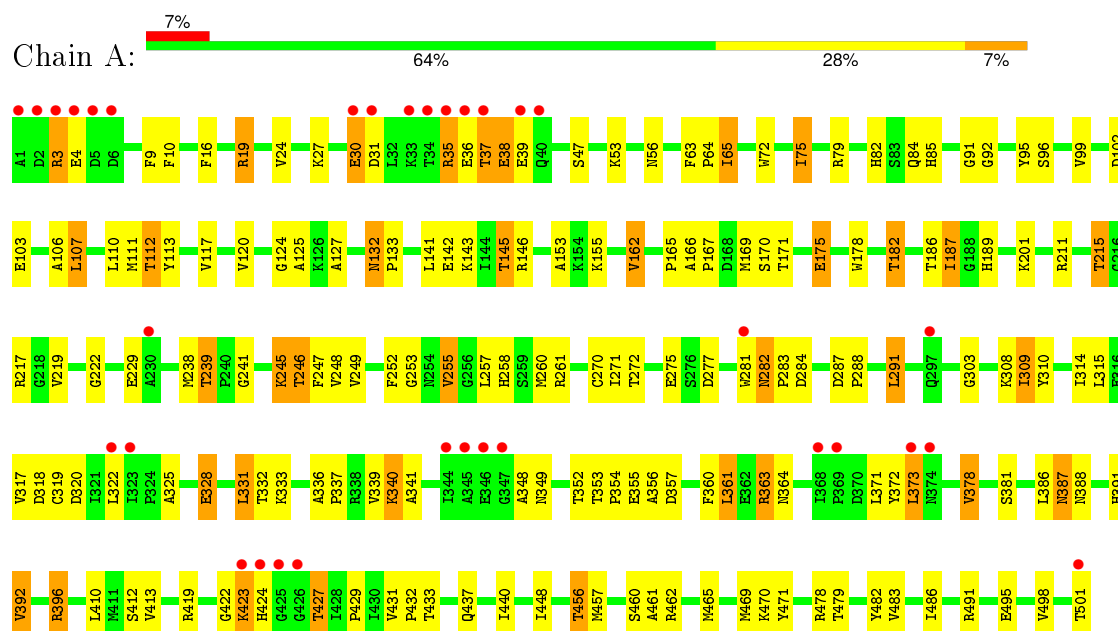
- Molecule 5 is water.

Mol	Chain	Residues	Atoms		ZeroOcc	AltConf
5	A	73	Total	O	0	0
			73	73		
5	B	69	Total	O	0	0
			69	69		
5	C	65	Total	O	0	0
			65	65		
5	D	66	Total	O	0	0
			66	66		
5	E	55	Total	O	0	0
			55	55		
5	F	67	Total	O	0	0
			67	67		

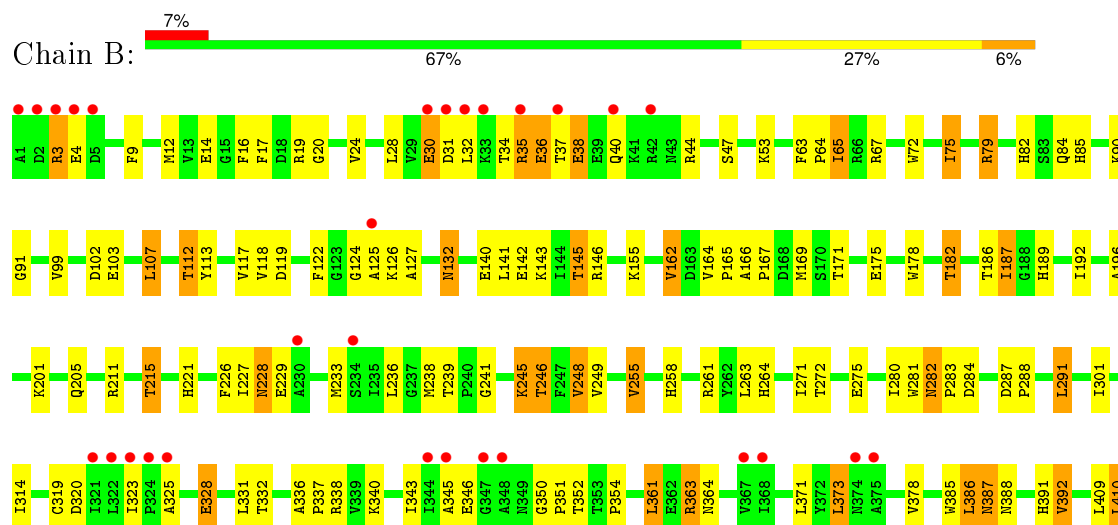
3 Residue-property plots

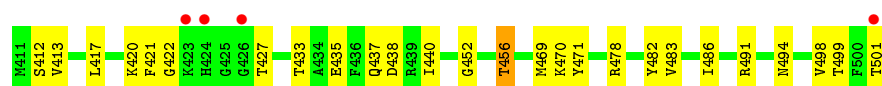
These plots are drawn for all protein, RNA and DNA chains in the entry. The first graphic for a chain summarises the proportions of errors displayed in the second graphic. The second graphic shows the sequence view annotated by issues in geometry and electron density. Residues are color-coded according to the number of geometric quality criteria for which they contain at least one outlier: green = 0, yellow = 1, orange = 2 and red = 3 or more. A red dot above a residue indicates a poor fit to the electron density ($\text{RSRZ} > 2$). Stretches of 2 or more consecutive residues without any outlier are shown as a green connector. Residues present in the sample, but not in the model, are shown in grey.

• Molecule 1: Glutamate dehydrogenase 1

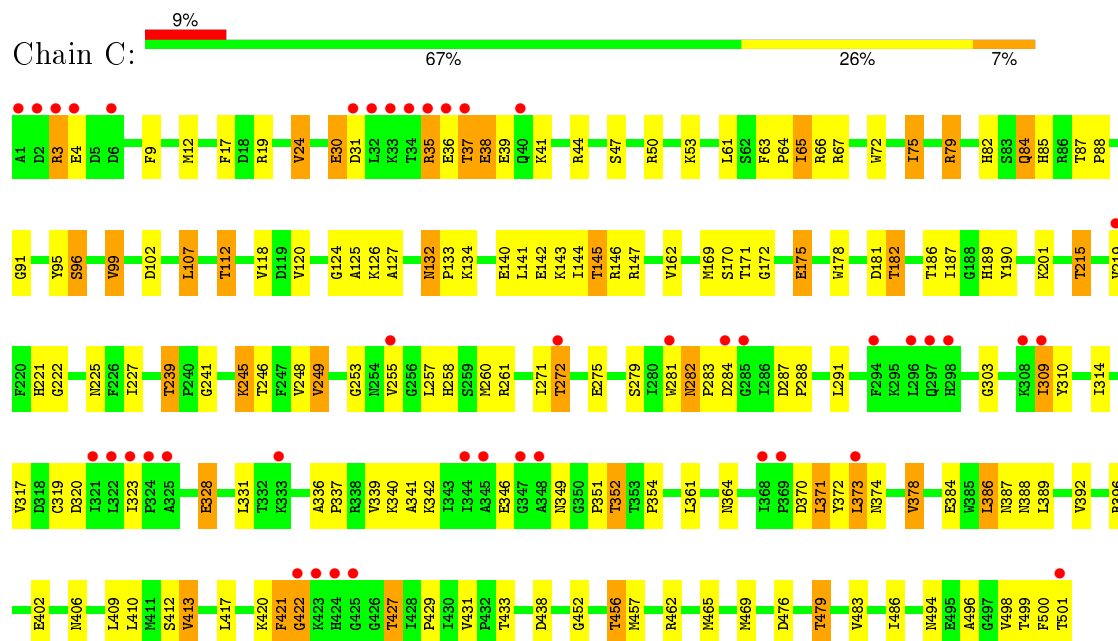


• Molecule 1: Glutamate dehydrogenase 1

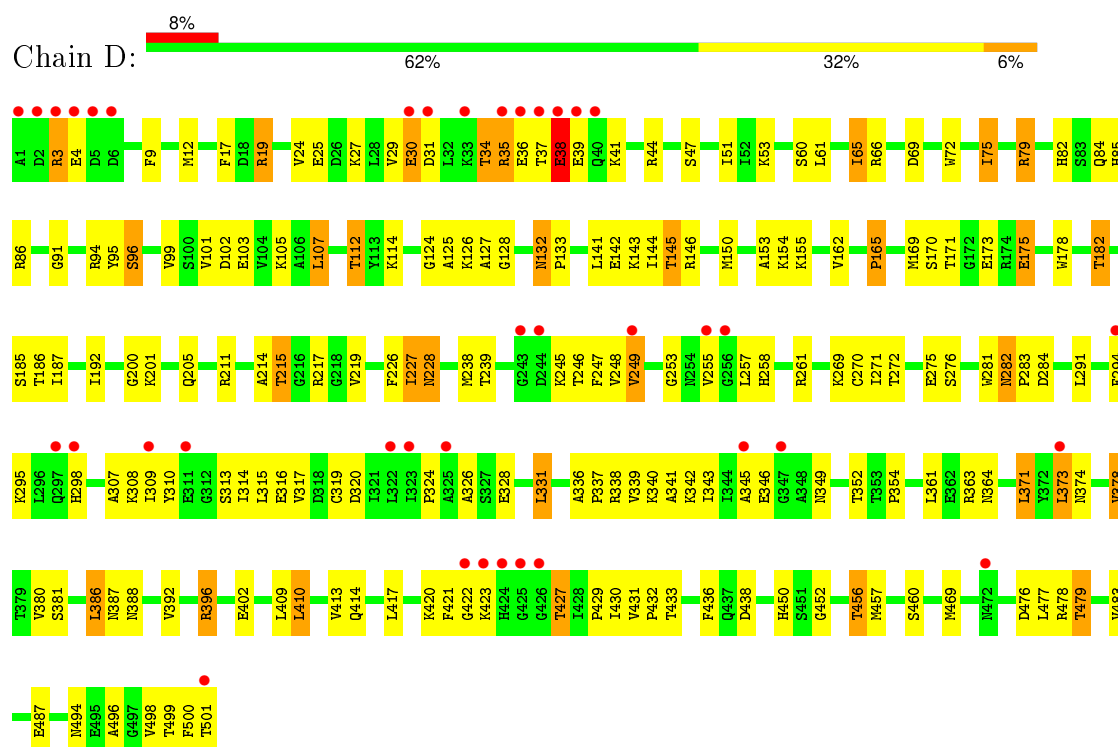




• Molecule 1: Glutamate dehydrogenase 1

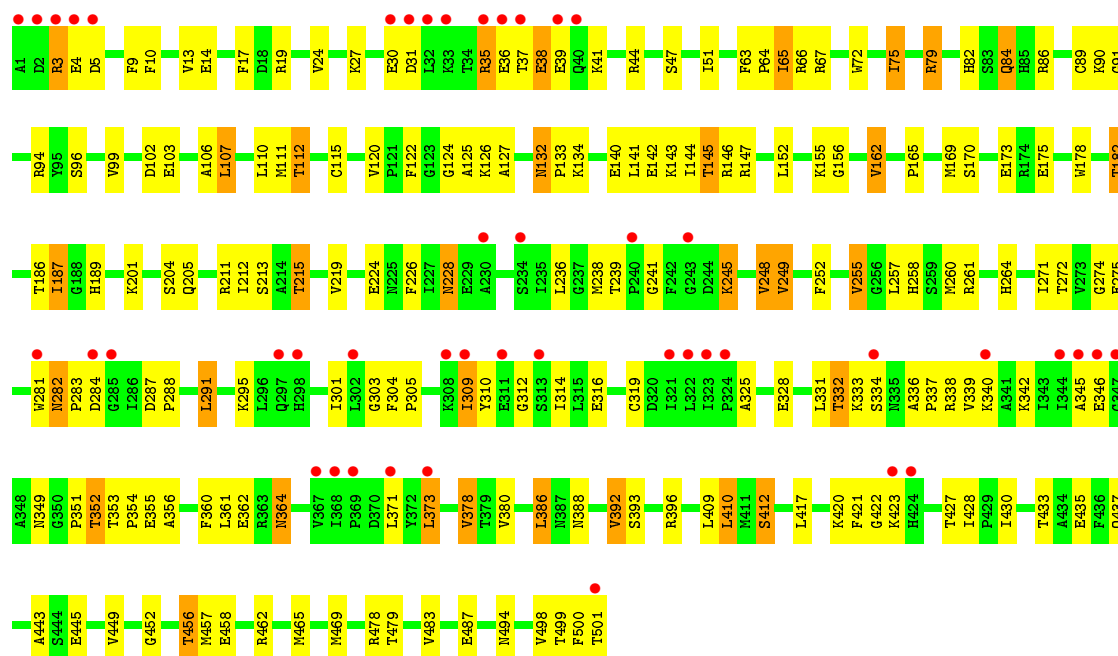


• Molecule 1: Glutamate dehydrogenase 1

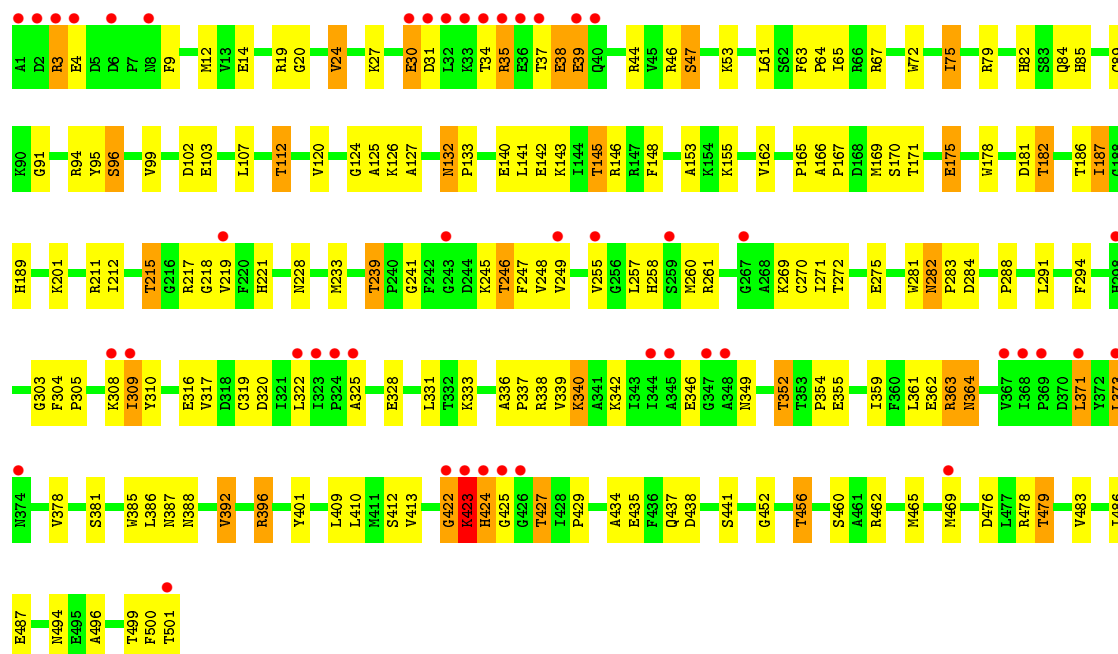


• Molecule 1: Glutamate dehydrogenase 1





• Molecule 1: Glutamate dehydrogenase 1



4 Data and refinement statistics

Property	Value	Source
Space group	P 1 21 1	Depositor
Cell constants a, b, c, α , β , γ	124.00 Å 102.50 Å 167.30 Å 90.00° 101.64° 90.00°	Depositor
Resolution (Å)	28.59 – 2.40 28.59 – 2.28	Depositor EDS
% Data completeness (in resolution range)	79.8 (28.59-2.40) 69.4 (28.59-2.28)	Depositor EDS
R_{merge}	(Not available)	Depositor
R_{sym}	(Not available)	Depositor
$\langle I/\sigma(I) \rangle$ ¹	1.28 (at 2.29 Å)	Xtriage
Refinement program	PHENIX (phenix.refine: 1.6.1_353)	Depositor
R, R_{free}	0.204 , 0.261 0.206 , 0.260	Depositor DCC
R_{free} test set	1961 reflections (1.56%)	DCC
Wilson B-factor (Å ²)	51.7	Xtriage
Anisotropy	0.463	Xtriage
Bulk solvent k_{sol} (e/Å ³), B_{sol} (Å ²)	0.34 , 55.1	EDS
Estimated twinning fraction	No twinning to report.	Xtriage
L-test for twinning ²	$\langle L \rangle = 0.47$, $\langle L^2 \rangle = 0.30$	Xtriage
Outliers	1 of 130469 reflections (0.001%)	Xtriage
F_o, F_c correlation	0.95	EDS
Total number of atoms	24707	wwPDB-VP
Average B, all atoms (Å ²)	67.0	wwPDB-VP

Xtriage's analysis on translational NCS is as follows: *The largest off-origin peak in the Patterson function is 2.73% of the height of the origin peak. No significant pseudotranslation is detected.*

¹Intensities estimated from amplitudes.

²Theoretical values of $\langle |L| \rangle$, $\langle L^2 \rangle$ for acentric reflections are 0.5, 0.375 respectively for untwinned datasets, and 0.333, 0.2 for perfectly twinned datasets.

5 Model quality [i](#)

5.1 Standard geometry [i](#)

Bond lengths and bond angles in the following residue types are not validated in this section: GTP, NAI

The Z score for a bond length (or angle) is the number of standard deviations the observed value is removed from the expected value. A bond length (or angle) with $|Z| > 5$ is considered an outlier worth inspection. RMSZ is the root-mean-square of all Z scores of the bond lengths (or angles).

Mol	Chain	Bond lengths		Bond angles	
		RMSZ	$\# Z > 5$	RMSZ	$\# Z > 5$
1	A	0.45	0/4005	0.61	0/5406
1	B	0.45	0/4005	0.62	1/5406 (0.0%)
1	C	0.46	0/4005	0.59	0/5406
1	D	0.45	0/4005	0.61	0/5406
1	E	0.45	0/4005	0.61	1/5406 (0.0%)
1	F	0.44	0/4005	0.60	0/5406
All	All	0.45	0/24030	0.61	2/32436 (0.0%)

There are no bond length outliers.

All (2) bond angle outliers are listed below:

Mol	Chain	Res	Type	Atoms	Z	Observed(°)	Ideal(°)
1	E	162	VAL	CB-CA-C	-5.67	100.62	111.40
1	B	162	VAL	CB-CA-C	-5.06	101.78	111.40

There are no chirality outliers.

There are no planarity outliers.

5.2 Too-close contacts [i](#)

In the following table, the Non-H and H(model) columns list the number of non-hydrogen atoms and hydrogen atoms in the chain respectively. The H(added) column lists the number of hydrogen atoms added and optimized by MolProbity. The Clashes column lists the number of clashes within the asymmetric unit, whereas Symm-Clashes lists symmetry related clashes.

Mol	Chain	Non-H	H(model)	H(added)	Clashes	Symm-Clashes
1	A	3922	0	3883	189	0
1	B	3922	0	3883	167	0
1	C	3922	0	3883	176	0

Continued on next page...

Continued from previous page...

Mol	Chain	Non-H	H(model)	H(added)	Clashes	Symm-Clashes
1	D	3922	0	3883	208	0
1	E	3922	0	3883	198	0
1	F	3922	0	3883	190	0
2	A	10	0	5	5	0
2	B	10	0	5	8	0
2	C	10	0	5	9	0
2	D	10	0	5	8	0
2	E	10	0	5	9	0
2	F	10	0	5	7	0
3	A	88	0	54	31	0
3	B	44	0	27	10	0
3	C	132	0	81	24	0
3	D	132	0	81	44	0
3	E	44	0	27	19	0
3	F	88	0	54	26	0
4	A	32	0	12	0	0
4	B	32	0	12	1	0
4	C	32	0	12	4	0
4	D	32	0	12	2	0
4	E	32	0	12	0	0
4	F	32	0	12	2	0
5	A	73	0	0	13	0
5	B	69	0	0	8	0
5	C	65	0	0	3	0
5	D	66	0	0	5	0
5	E	55	0	0	5	0
5	F	67	0	0	10	0
All	All	24707	0	23724	1124	0

The all-atom clashscore is defined as the number of clashes found per 1000 atoms (including hydrogen atoms). The all-atom clashscore for this structure is 23.

The worst 5 of 1124 close contacts within the same asymmetric unit are listed below, sorted by their clash magnitude.

Atom-1	Atom-2	Interatomic distance (Å)	Clash overlap (Å)
2:B:601:GLU:HA	3:B:603:NAI:H4N	1.22	1.12
1:A:272:THR:HG21	1:A:317:VAL:HG21	1.30	1.12
1:E:272:THR:CG2	1:E:281:TRP:HD1	1.64	1.10
1:A:38:GLU:HG2	1:A:39:GLU:H	1.16	1.08
1:C:82:HIS:HD2	1:C:112:THR:HG21	1.13	1.08

There are no symmetry-related clashes.

5.3 Torsion angles [i](#)

5.3.1 Protein backbone [i](#)

In the following table, the Percentiles column shows the percent Ramachandran outliers of the chain as a percentile score with respect to all X-ray entries followed by that with respect to entries of similar resolution.

The Analysed column shows the number of residues for which the backbone conformation was analysed, and the total number of residues.

Mol	Chain	Analysed	Favoured	Allowed	Outliers	Percentiles	
1	A	499/501 (100%)	458 (92%)	31 (6%)	10 (2%)	9	11
1	B	499/501 (100%)	461 (92%)	30 (6%)	8 (2%)	12	16
1	C	499/501 (100%)	468 (94%)	21 (4%)	10 (2%)	9	11
1	D	499/501 (100%)	460 (92%)	28 (6%)	11 (2%)	8	9
1	E	499/501 (100%)	462 (93%)	30 (6%)	7 (1%)	14	19
1	F	499/501 (100%)	468 (94%)	23 (5%)	8 (2%)	12	16
All	All	2994/3006 (100%)	2777 (93%)	163 (5%)	54 (2%)	11	13

5 of 54 Ramachandran outliers are listed below:

Mol	Chain	Res	Type
1	A	3	ARG
1	A	38	GLU
1	B	38	GLU
1	B	422	GLY
1	C	38	GLU

5.3.2 Protein sidechains [i](#)

In the following table, the Percentiles column shows the percent sidechain outliers of the chain as a percentile score with respect to all X-ray entries followed by that with respect to entries of similar resolution.

The Analysed column shows the number of residues for which the sidechain conformation was analysed, and the total number of residues.

Mol	Chain	Analysed	Rotameric	Outliers	Percentiles	
1	A	420/420 (100%)	375 (89%)	45 (11%)	8	11

Continued on next page...

Continued from previous page...

Mol	Chain	Analysed	Rotameric	Outliers	Percentiles	
1	B	420/420 (100%)	376 (90%)	44 (10%)	8	12
1	C	420/420 (100%)	373 (89%)	47 (11%)	7	10
1	D	420/420 (100%)	376 (90%)	44 (10%)	8	12
1	E	420/420 (100%)	377 (90%)	43 (10%)	9	13
1	F	420/420 (100%)	375 (89%)	45 (11%)	8	11
All	All	2520/2520 (100%)	2252 (89%)	268 (11%)	8	12

5 of 268 residues with a non-rotameric sidechain are listed below:

Mol	Chain	Res	Type
1	C	371	LEU
1	D	132	ASN
1	F	352	THR
1	C	386	LEU
1	D	19	ARG

Some sidechains can be flipped to improve hydrogen bonding and reduce clashes. 5 of 86 such sidechains are listed below:

Mol	Chain	Res	Type
1	C	387	ASN
1	D	228	ASN
1	F	282	ASN
1	C	406	ASN
1	D	56	ASN

5.3.3 RNA ⓘ

There are no RNA molecules in this entry.

5.4 Non-standard residues in protein, DNA, RNA chains ⓘ

There are no non-standard protein/DNA/RNA residues in this entry.

5.5 Carbohydrates ⓘ

There are no carbohydrates in this entry.

5.6 Ligand geometry ⓘ

24 ligands are modelled in this entry.

In the following table, the Counts columns list the number of bonds (or angles) for which Mogul statistics could be retrieved, the number of bonds (or angles) that are observed in the model and the number of bonds (or angles) that are defined in the chemical component dictionary. The Link column lists molecule types, if any, to which the group is linked. The Z score for a bond length (or angle) is the number of standard deviations the observed value is removed from the expected value. A bond length (or angle) with $|Z| > 2$ is considered an outlier worth inspection. RMSZ is the root-mean-square of all Z scores of the bond lengths (or angles).

Mol	Type	Chain	Res	Link	Bond lengths			Bond angles		
					Counts	RMSZ	# $ Z > 2$	Counts	RMSZ	# $ Z > 2$
2	GLU	A	601	-	3,9,9	0.40	0	2,11,11	0.22	0
4	GTP	A	602	-	25,34,34	2.26	4 (16%)	34,54,54	1.82	7 (20%)
3	NAI	A	603	-	38,48,48	3.66	15 (39%)	48,73,73	2.44	17 (35%)
3	NAI	A	604	-	38,48,48	3.87	14 (36%)	48,73,73	2.84	15 (31%)
2	GLU	B	601	-	3,9,9	0.51	0	2,11,11	0.47	0
4	GTP	B	602	-	25,34,34	2.17	4 (16%)	34,54,54	2.08	8 (23%)
3	NAI	B	603	-	38,48,48	3.43	15 (39%)	48,73,73	2.37	13 (27%)
2	GLU	C	601	-	3,9,9	0.49	0	2,11,11	0.31	0
4	GTP	C	602	-	25,34,34	2.18	4 (16%)	34,54,54	2.54	12 (35%)
3	NAI	C	603	-	38,48,48	3.63	14 (36%)	48,73,73	2.86	13 (27%)
3	NAI	C	604	-	38,48,48	3.64	14 (36%)	48,73,73	2.22	12 (25%)
3	NAI	C	605	-	38,48,48	3.76	13 (34%)	48,73,73	2.69	16 (33%)
2	GLU	D	601	-	3,9,9	0.44	0	2,11,11	0.11	0
4	GTP	D	602	-	25,34,34	2.23	5 (20%)	34,54,54	2.44	11 (32%)
3	NAI	D	603	-	38,48,48	3.58	14 (36%)	48,73,73	2.27	11 (22%)
3	NAI	D	604	-	38,48,48	3.98	16 (42%)	48,73,73	2.83	16 (33%)
3	NAI	D	605	-	38,48,48	3.88	14 (36%)	48,73,73	2.68	11 (22%)
2	GLU	E	601	-	3,9,9	0.35	0	2,11,11	0.02	0
4	GTP	E	602	-	25,34,34	2.22	4 (16%)	34,54,54	2.05	7 (20%)
3	NAI	E	603	-	38,48,48	3.61	15 (39%)	48,73,73	2.08	13 (27%)
2	GLU	F	601	-	3,9,9	0.31	0	2,11,11	0.09	0
3	NAI	F	602	-	38,48,48	3.90	15 (39%)	48,73,73	2.76	14 (29%)
4	GTP	F	603	-	25,34,34	2.17	6 (24%)	34,54,54	2.51	12 (35%)
3	NAI	F	604	-	38,48,48	3.59	14 (36%)	48,73,73	2.32	16 (33%)

In the following table, the Chirals column lists the number of chiral outliers, the number of chiral centers analysed, the number of these observed in the model and the number defined in the chemical component dictionary. Similar counts are reported in the Torsion and Rings columns. '-' means

no outliers of that kind were identified.

Mol	Type	Chain	Res	Link	Chirals	Torsions	Rings
2	GLU	A	601	-	-	0/3/9/9	0/0/0/0
4	GTP	A	602	-	-	0/18/38/38	0/3/3/3
3	NAI	A	603	-	3/3/13/16	0/25/72/72	0/5/5/5
3	NAI	A	604	-	1/1/13/16	0/25/72/72	0/5/5/5
2	GLU	B	601	-	-	0/3/9/9	0/0/0/0
4	GTP	B	602	-	-	0/18/38/38	0/3/3/3
3	NAI	B	603	-	1/1/13/16	0/25/72/72	0/5/5/5
2	GLU	C	601	-	-	0/3/9/9	0/0/0/0
4	GTP	C	602	-	1/1/7/7	0/18/38/38	0/3/3/3
3	NAI	C	603	-	1/1/13/16	0/25/72/72	0/5/5/5
3	NAI	C	604	-	2/2/13/16	0/25/72/72	0/5/5/5
3	NAI	C	605	-	1/1/13/16	0/25/72/72	0/5/5/5
2	GLU	D	601	-	-	0/3/9/9	0/0/0/0
4	GTP	D	602	-	2/2/7/7	0/18/38/38	0/3/3/3
3	NAI	D	603	-	2/2/13/16	0/25/72/72	0/5/5/5
3	NAI	D	604	-	-	0/25/72/72	0/5/5/5
3	NAI	D	605	-	2/2/13/16	0/25/72/72	0/5/5/5
2	GLU	E	601	-	-	0/3/9/9	0/0/0/0
4	GTP	E	602	-	-	0/18/38/38	0/3/3/3
3	NAI	E	603	-	2/2/13/16	0/25/72/72	0/5/5/5
2	GLU	F	601	-	-	0/3/9/9	0/0/0/0
3	NAI	F	602	-	-	1/25/72/72	0/5/5/5
4	GTP	F	603	-	1/1/7/7	0/18/38/38	0/3/3/3
3	NAI	F	604	-	1/1/13/16	0/25/72/72	0/5/5/5

The worst 5 of 200 bond length outliers are listed below:

Mol	Chain	Res	Type	Atoms	Z	Observed(Å)	Ideal(Å)
3	A	604	NAI	O7N-C7N	-2.93	1.17	1.24
3	D	605	NAI	O7N-C7N	-2.81	1.17	1.24
3	D	604	NAI	O7N-C7N	-2.57	1.18	1.24
3	D	603	NAI	O7N-C7N	-2.39	1.18	1.24
4	F	603	GTP	C6-C5	-2.35	1.36	1.41

The worst 5 of 224 bond angle outliers are listed below:

Mol	Chain	Res	Type	Atoms	Z	Observed(°)	Ideal(°)
3	D	604	NAI	N3A-C2A-N1A	-13.24	118.75	128.89
3	D	605	NAI	N3A-C2A-N1A	-12.80	119.09	128.89
3	A	604	NAI	N3A-C2A-N1A	-12.56	119.28	128.89

Continued on next page...

Continued from previous page...

Mol	Chain	Res	Type	Atoms	Z	Observed(°)	Ideal(°)
3	F	602	NAI	N3A-C2A-N1A	-12.18	119.57	128.89
3	C	603	NAI	N3A-C2A-N1A	-11.63	119.99	128.89

5 of 20 chirality outliers are listed below:

Mol	Chain	Res	Type	Atom
3	D	605	NAI	C3D
3	D	605	NAI	C4B
3	A	604	NAI	C2D
3	F	604	NAI	C1B
3	D	603	NAI	C1B

All (1) torsion outliers are listed below:

Mol	Chain	Res	Type	Atoms
3	F	602	NAI	C2N-C3N-C7N-N7N

There are no ring outliers.

22 monomers are involved in 172 short contacts:

Mol	Chain	Res	Type	Clashes	Symm-Clashes
2	A	601	GLU	5	0
3	A	603	NAI	23	0
3	A	604	NAI	8	0
2	B	601	GLU	8	0
4	B	602	GTP	1	0
3	B	603	NAI	10	0
2	C	601	GLU	9	0
4	C	602	GTP	4	0
3	C	603	NAI	4	0
3	C	604	NAI	15	0
3	C	605	NAI	5	0
2	D	601	GLU	8	0
4	D	602	GTP	2	0
3	D	603	NAI	24	0
3	D	604	NAI	9	0
3	D	605	NAI	11	0
2	E	601	GLU	9	0
3	E	603	NAI	19	0
2	F	601	GLU	7	0
3	F	602	NAI	10	0

Continued on next page...

Continued from previous page...

Mol	Chain	Res	Type	Clashes	Symm-Clashes
4	F	603	GTP	2	0
3	F	604	NAI	16	0

5.7 Other polymers [i](#)

There are no such residues in this entry.

5.8 Polymer linkage issues [i](#)

There are no chain breaks in this entry.

6 Fit of model and data ⓘ

6.1 Protein, DNA and RNA chains ⓘ

In the following table, the column labelled ‘#RSRZ> 2’ contains the number (and percentage) of RSRZ outliers, followed by percent RSRZ outliers for the chain as percentile scores relative to all X-ray entries and entries of similar resolution. The OWAB column contains the minimum, median, 95th percentile and maximum values of the occupancy-weighted average B-factor per residue. The column labelled ‘Q< 0.9’ lists the number of (and percentage) of residues with an average occupancy less than 0.9.

Mol	Chain	Analysed	<RSRZ>	#RSRZ>2		OWAB(Å ²)	Q<0.9
1	A	501/501 (100%)	0.20	33 (6%)	22 22	41, 63, 99, 139	0
1	B	501/501 (100%)	0.14	33 (6%)	22 22	37, 61, 98, 140	0
1	C	501/501 (100%)	0.24	43 (8%)	13 13	39, 63, 98, 138	0
1	D	501/501 (100%)	0.28	38 (7%)	17 16	39, 65, 99, 140	0
1	E	501/501 (100%)	0.30	46 (9%)	11 11	38, 68, 103, 138	0
1	F	501/501 (100%)	0.20	46 (9%)	11 11	37, 60, 100, 138	0
All	All	3006/3006 (100%)	0.22	239 (7%)	15 15	37, 63, 101, 140	0

The worst 5 of 239 RSRZ outliers are listed below:

Mol	Chain	Res	Type	RSRZ
1	B	1	ALA	14.4
1	A	1	ALA	11.9
1	E	1	ALA	11.6
1	D	1	ALA	10.4
1	F	1	ALA	10.0

6.2 Non-standard residues in protein, DNA, RNA chains ⓘ

There are no non-standard protein/DNA/RNA residues in this entry.

6.3 Carbohydrates ⓘ

There are no carbohydrates in this entry.

6.4 Ligands [i](#)

In the following table, the Atoms column lists the number of modelled atoms in the group and the number defined in the chemical component dictionary. LLDF column lists the quality of electron density of the group with respect to its neighbouring residues in protein, DNA or RNA chains. The B-factors column lists the minimum, median, 95th percentile and maximum values of B factors of atoms in the group. The column labelled 'Q< 0.9' lists the number of atoms with occupancy less than 0.9.

Mol	Type	Chain	Res	Atoms	RSCC	RSR	LLDF	B-factors(Å ²)	Q<0.9
3	NAI	A	604	44/44	0.91	0.18	1.98	42,54,73,83	21
3	NAI	D	605	44/44	0.92	0.18	1.43	45,59,76,81	18
3	NAI	C	605	44/44	0.93	0.17	1.06	41,54,70,82	19
3	NAI	C	603	44/44	0.92	0.16	0.84	44,54,67,78	19
3	NAI	F	602	44/44	0.94	0.16	0.65	47,57,75,81	18
3	NAI	D	604	44/44	0.93	0.15	0.38	42,57,72,80	16
4	GTP	A	602	32/32	0.98	0.15	0.04	58,67,76,81	0
3	NAI	D	603	44/44	0.93	0.19	-0.04	60,69,86,89	0
2	GLU	A	601	10/10	0.96	0.19	-0.09	55,62,68,68	0
3	NAI	B	603	44/44	0.94	0.18	-0.16	47,57,64,72	0
4	GTP	D	602	32/32	0.95	0.15	-0.21	57,76,85,91	0
3	NAI	F	604	44/44	0.94	0.18	-0.22	48,59,65,69	0
4	GTP	C	602	32/32	0.96	0.13	-0.29	62,72,79,84	0
3	NAI	E	603	44/44	0.94	0.15	-0.33	57,72,82,88	0
3	NAI	A	603	44/44	0.93	0.16	-0.43	52,62,69,72	0
4	GTP	F	603	32/32	0.97	0.13	-0.52	50,64,71,76	0
2	GLU	C	601	10/10	0.94	0.17	-0.57	49,57,62,65	0
2	GLU	F	601	10/10	0.97	0.15	-0.64	44,52,63,63	0
3	NAI	C	604	44/44	0.93	0.16	-0.65	49,65,78,82	0
2	GLU	D	601	10/10	0.95	0.16	-0.67	52,60,70,73	0
4	GTP	E	602	32/32	0.98	0.12	-0.69	58,70,81,81	0
4	GTP	B	602	32/32	0.99	0.10	-0.72	50,56,62,67	0
2	GLU	E	601	10/10	0.97	0.15	-0.73	54,61,65,66	0
2	GLU	B	601	10/10	0.96	0.13	-1.37	50,55,58,59	0

6.5 Other polymers [i](#)

There are no such residues in this entry.