



Full wwPDB X-ray Structure Validation Report ⓘ

Jan 31, 2016 – 08:59 PM GMT

PDB ID : 1N1H
Title : Initiation complex of polymerase lambda3 from reovirus
Authors : Tao, Y.; Farsetta, D.L.; Nibert, M.L.; Harrison, S.C.
Deposited on : 2002-10-17
Resolution : 2.80 Å(reported)

This is a Full wwPDB X-ray Structure Validation Report for a publicly released PDB entry.
We welcome your comments at validation@mail.wwpdb.org
A user guide is available at
<http://wwpdb.org/validation/2016/XrayValidationReportHelp>
with specific help available everywhere you see the ⓘ symbol.

The following versions of software and data (see [references ⓘ](#)) were used in the production of this report:

MolProbity : 4.02b-467
Mogul : 1.7 (RC4), CSD as536be (2015)
Xtriage (Phenix) : 1.9-1692
EDS : rb-20026688
Percentile statistics : 20151230.v01 (using entries in the PDB archive December 30th 2015)
Refmac : 5.8.0135
CCP4 : 6.5.0
Ideal geometry (proteins) : Engh & Huber (2001)
Ideal geometry (DNA, RNA) : Parkinson et al. (1996)
Validation Pipeline (wwPDB-VP) : trunk26865

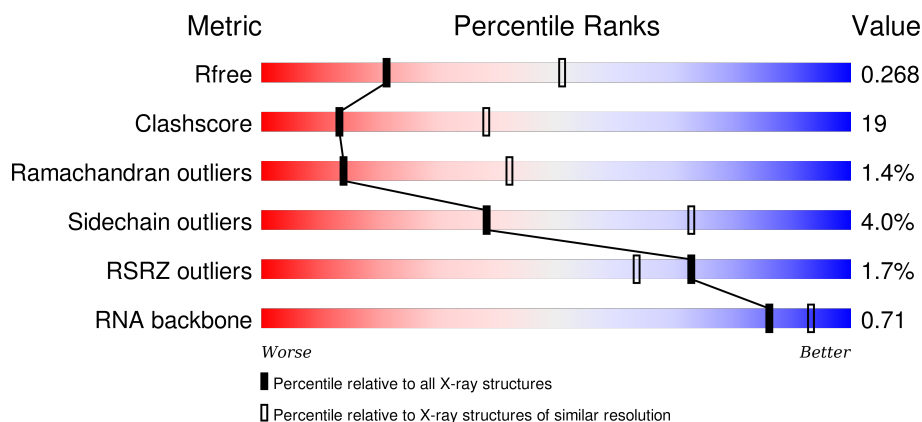
1 Overall quality at a glance

The following experimental techniques were used to determine the structure:

X-RAY DIFFRACTION



The reported resolution of this entry is 2.80 Å.

Percentile scores (ranging between 0-100) for global validation metrics of the entry are shown in the following graphic. The table shows the number of entries on which the scores are based.



Metric	Whole archive (#Entries)	Similar resolution (#Entries, resolution range(Å))
R_{free}	91344	2393 (2.80-2.80)
Clashscore	102246	2827 (2.80-2.80)
Ramachandran outliers	100387	2782 (2.80-2.80)
Sidechain outliers	100360	2784 (2.80-2.80)
RSRZ outliers	91569	2404 (2.80-2.80)
RNA backbone	2183	1091 (3.20-2.40)

The table below summarises the geometric issues observed across the polymeric chains and their fit to the electron density. The red, orange, yellow and green segments on the lower bar indicate the fraction of residues that contain outliers for ≥ 3 , 2, 1 and 0 types of geometric quality criteria. A grey segment represents the fraction of residues that are not modelled. The numeric value for each fraction is indicated below the corresponding segment, with a dot representing fractions $\leq 5\%$. The upper red bar (where present) indicates the fraction of residues that have poor fit to the electron density. The numeric value is given above the bar.

Mol	Chain	Length	Quality of chain
1	B	6	 67% 33%
2	A	1267	 2% 64% 33% .

The following table lists non-polymeric compounds, carbohydrate monomers and non-standard residues in protein, DNA, RNA chains that are outliers for geometric or electron-density-fit criteria:

Mol	Type	Chain	Res	Chirality	Geometry	Clashes	Electron density
5	GDP	A	1425	-	-	-	X

2 Entry composition

There are 8 unique types of molecules in this entry. The entry contains 10367 atoms, of which 0 are hydrogens and 0 are deuteriums.

In the tables below, the ZeroOcc column contains the number of atoms modelled with zero occupancy, the AltConf column contains the number of residues with at least one atom in alternate conformation and the Trace column contains the number of residues modelled with at most 2 atoms.

- Molecule 1 is a RNA chain called 5'-R(*AP*UP*UP*AP*GP*C)-3'.

Mol	Chain	Residues	Atoms					ZeroOcc	AltConf	Trace
1	B	4	Total	C	N	O	P	0	0	0
			85	38	15	28	4			

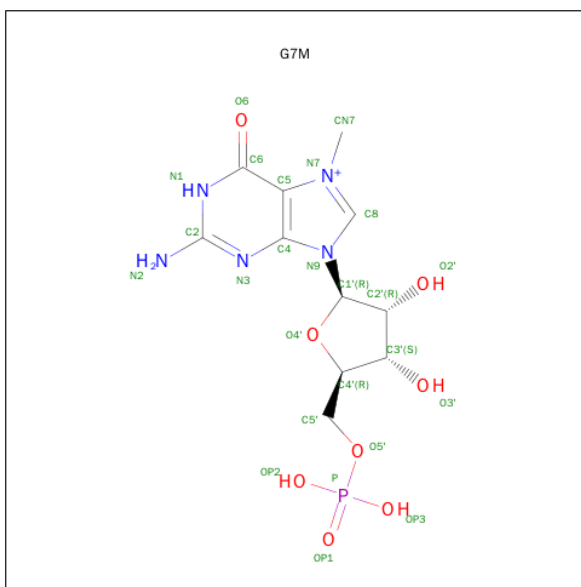
- Molecule 2 is a protein called Minor core protein lambda 3.

Mol	Chain	Residues	Atoms					ZeroOcc	AltConf	Trace
2	A	1264	Total	C	N	O	S	0	0	0
			9986	6369	1712	1841	64			

- Molecule 3 is MANGANESE (II) ION (three-letter code: MN) (formula: Mn).

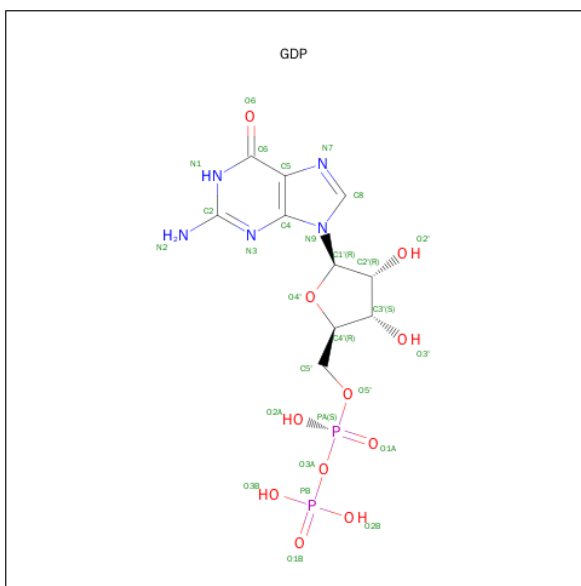
Mol	Chain	Residues	Atoms		ZeroOcc	AltConf
3	A	2	Total	Mn	0	0
			2	2		

- Molecule 4 is N7-METHYL-GUANOSINE-5'-MONOPHOSPHATE (three-letter code: G7M) (formula: C₁₁H₁₇N₅O₈P).



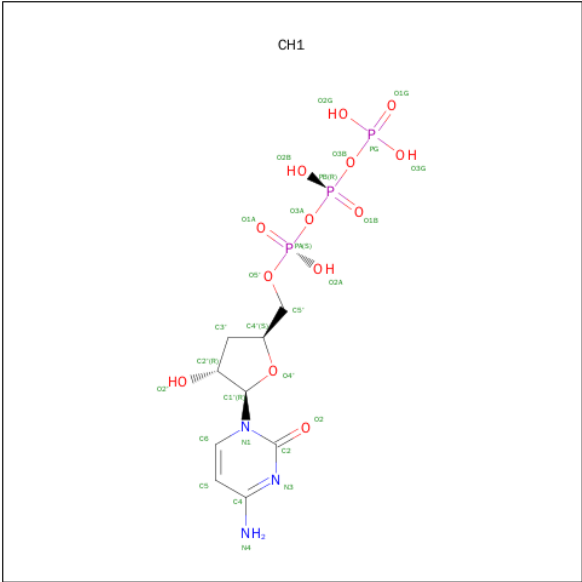
Mol	Chain	Residues	Atoms					ZeroOcc	AltConf
4	A	1	Total	C	N	O	P	0	0
			25	11	5	8	1		

- Molecule 5 is GUANOSINE-5'-DIPHOSPHATE (three-letter code: GDP) (formula: $C_{10}H_{15}N_5O_{11}P_2$).



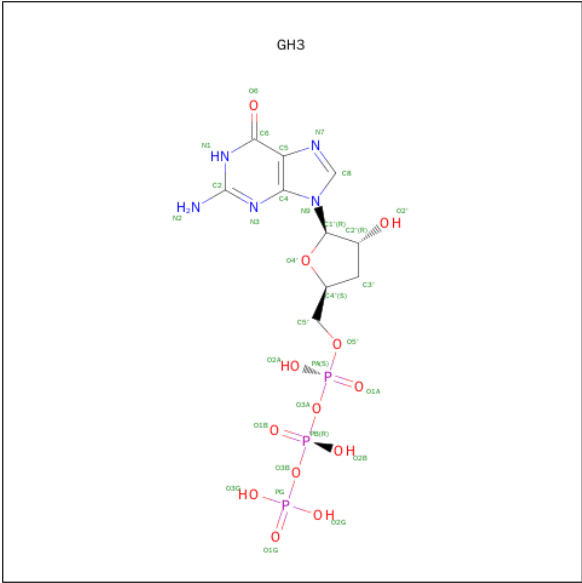
Mol	Chain	Residues	Atoms					ZeroOcc	AltConf
5	A	1	Total	C	N	O	P	0	0
			27	10	5	10	2		

- Molecule 6 is 3'-DEOXY-CYTIDINE-5'-TRIPHOSPHATE (three-letter code: CH1) (formula: $C_9H_{16}N_3O_{13}P_3$).



Mol	Chain	Residues	Atoms					ZeroOcc	AltConf
6	A	1	Total	C	N	O	P	0	0
			28	9	3	13	3		

- Molecule 7 is 3'-DEOXY-GUANOSINE-5'-TRIPHOSPHATE (three-letter code: GH3) (formula: C₁₀H₁₆N₅O₁₃P₃).



Mol	Chain	Residues	Atoms					ZeroOcc	AltConf
7	A	1	Total	C	N	O	P	0	0
			31	10	5	13	3		

- Molecule 8 is water.

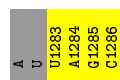
Mol	Chain	Residues	Atoms		ZeroOcc	AltConf
8	A	178	Total 178	O 178	0	0
8	B	5	Total 5	O 5	0	0

3 Residue-property plots

These plots are drawn for all protein, RNA and DNA chains in the entry. The first graphic for a chain summarises the proportions of errors displayed in the second graphic. The second graphic shows the sequence view annotated by issues in geometry and electron density. Residues are color-coded according to the number of geometric quality criteria for which they contain at least one outlier: green = 0, yellow = 1, orange = 2 and red = 3 or more. A red dot above a residue indicates a poor fit to the electron density (RSRZ > 2). Stretches of 2 or more consecutive residues without any outlier are shown as a green connector. Residues present in the sample, but not in the model, are shown in grey.

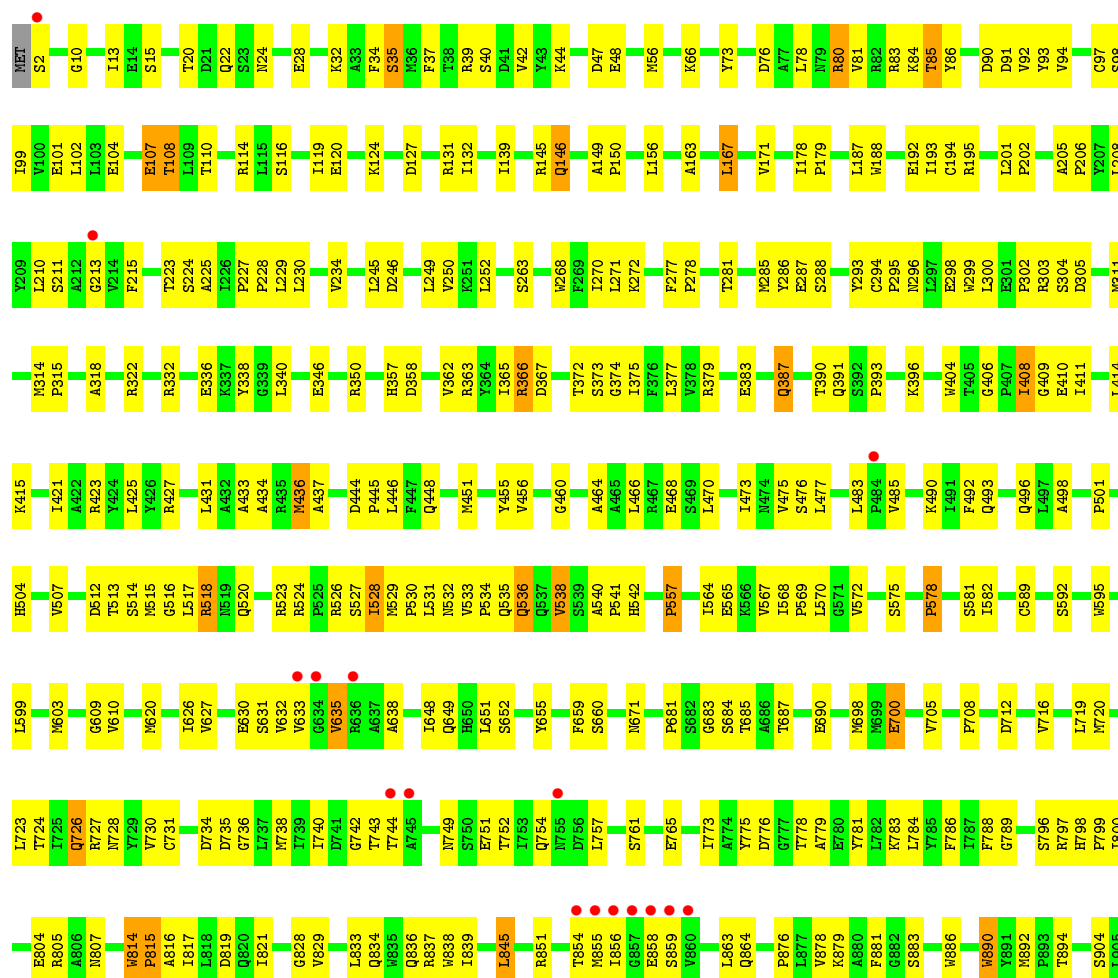
- Molecule 1: 5'-R(*AP*UP*UP*AP*GP*C)-3'

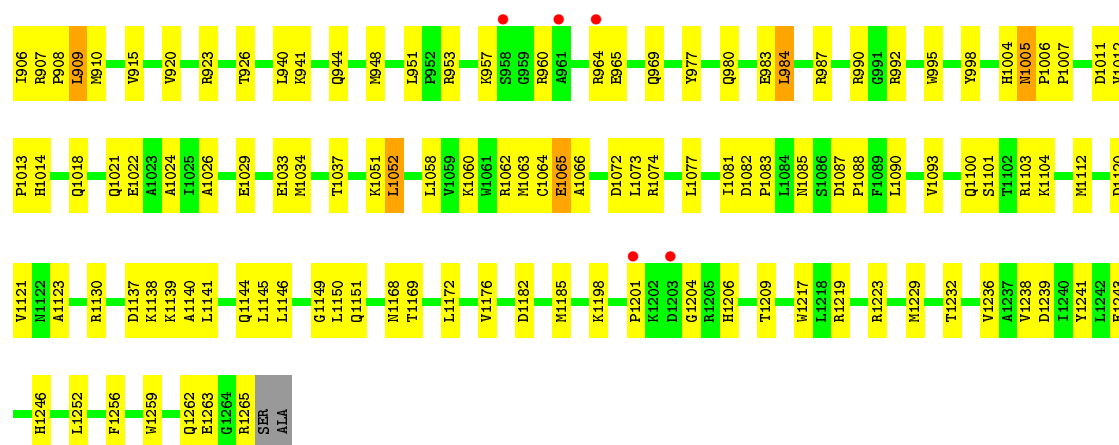
Chain B: 



- Molecule 2: Minor core protein lambda 3

Chain A: 





4 Data and refinement statistics

Property	Value	Source
Space group	P 21 21 21	Depositor
Cell constants a, b, c, α , β , γ	70.88 Å 85.01 Å 249.29 Å 90.00° 90.00° 90.00°	Depositor
Resolution (Å)	29.71 – 2.80 43.01 – 2.79	Depositor EDS
% Data completeness (in resolution range)	79.5 (29.71-2.80) 79.2 (43.01-2.79)	Depositor EDS
R_{merge}	0.12	Depositor
R_{sym}	(Not available)	Depositor
$\langle I/\sigma(I) \rangle$	-	Xtriage
Refinement program	CNS	Depositor
R, R_{free}	0.216 , 0.268 0.216 , 0.268	Depositor DCC
R_{free} test set	1794 reflections (5.94%)	DCC
Wilson B-factor (Å ²)	28.3	Xtriage
Anisotropy	0.212	Xtriage
Bulk solvent k_{sol} (e/Å ³), B_{sol} (Å ²)	0.36 , 37.7	EDS
Estimated twinning fraction	No twinning to report.	Xtriage
L-test for twinning ¹	$\langle L \rangle = 0.47$, $\langle L^2 \rangle = 0.30$	Xtriage
Outliers	0 of 38268 reflections	Xtriage
F_o, F_c correlation	0.90	EDS
Total number of atoms	10367	wwPDB-VP
Average B, all atoms (Å ²)	23.0	wwPDB-VP

Xtriage's analysis on translational NCS is as follows: *The largest off-origin peak in the Patterson function is 3.15% of the height of the origin peak. No significant pseudotranslation is detected.*

¹Theoretical values of $\langle |L| \rangle$, $\langle L^2 \rangle$ for acentric reflections are 0.5, 0.375 respectively for untwinned datasets, and 0.333, 0.2 for perfectly twinned datasets.

5 Model quality [i](#)

5.1 Standard geometry [i](#)

Bond lengths and bond angles in the following residue types are not validated in this section: GDP, G7M, MN, CH1, GH3

The Z score for a bond length (or angle) is the number of standard deviations the observed value is removed from the expected value. A bond length (or angle) with $|Z| > 5$ is considered an outlier worth inspection. RMSZ is the root-mean-square of all Z scores of the bond lengths (or angles).

Mol	Chain	Bond lengths		Bond angles	
		RMSZ	$\# Z > 5$	RMSZ	$\# Z > 5$
1	B	0.68	0/94	0.73	0/144
2	A	0.39	0/10239	0.62	1/13905 (0.0%)
All	All	0.39	0/10333	0.62	1/14049 (0.0%)

There are no bond length outliers.

All (1) bond angle outliers are listed below:

Mol	Chain	Res	Type	Atoms	Z	Observed(°)	Ideal(°)
2	A	408	ILE	N-CA-C	-5.18	97.00	111.00

There are no chirality outliers.

There are no planarity outliers.

5.2 Too-close contacts [i](#)

In the following table, the Non-H and H(model) columns list the number of non-hydrogen atoms and hydrogen atoms in the chain respectively. The H(added) column lists the number of hydrogen atoms added and optimized by MolProbity. The Clashes column lists the number of clashes within the asymmetric unit, whereas Symm-Clashes lists symmetry related clashes.

Mol	Chain	Non-H	H(model)	H(added)	Clashes	Symm-Clashes
1	B	85	0	44	7	0
2	A	9986	0	9903	380	0
3	A	2	0	0	0	0
4	A	25	0	14	0	0
5	A	27	0	12	2	0
6	A	28	0	12	0	0
7	A	31	0	12	0	0
8	A	178	0	0	27	0

Continued on next page...

Continued from previous page...

Mol	Chain	Non-H	H(model)	H(added)	Clashes	Symm-Clashes
8	B	5	0	0	3	0
All	All	10367	0	9997	382	0

The all-atom clashscore is defined as the number of clashes found per 1000 atoms (including hydrogen atoms). The all-atom clashscore for this structure is 19.

All (382) close contacts within the same asymmetric unit are listed below, sorted by their clash magnitude.

Atom-1	Atom-2	Interatomic distance (Å)	Clash overlap (Å)
2:A:743:THR:HG22	2:A:744:THR:H	1.17	1.04
2:A:223:THR:HG22	2:A:225:ALA:H	1.21	1.01
2:A:1005:ASN:HD21	2:A:1263:GLU:HB3	1.23	1.00
2:A:410:GLU:H	2:A:649:GLN:NE2	1.61	0.98
2:A:724:THR:HG22	2:A:726:GLN:H	1.26	0.95
2:A:22:GLN:NE2	2:A:878:VAL:H	1.64	0.93
2:A:1085:ASN:HB2	8:A:1590:HOH:O	1.66	0.93
2:A:542:HIS:NE2	2:A:690:GLU:HG3	1.87	0.89
8:B:1454:HOH:O	2:A:514:SER:HB2	1.72	0.88
2:A:856:ILE:HB	2:A:859:SER:HB2	1.56	0.87
2:A:907:ARG:HB3	2:A:908:PRO:HD3	1.57	0.86
2:A:776:ASP:OD1	2:A:778:THR:HB	1.75	0.86
2:A:104:GLU:HG3	2:A:116:SER:HA	1.60	0.84
2:A:81:VAL:H	2:A:671:ASN:HD21	1.26	0.83
2:A:78:LEU:HD12	2:A:80:ARG:NH2	1.92	0.83
2:A:743:THR:HG22	2:A:744:THR:N	1.94	0.82
2:A:410:GLU:H	2:A:649:GLN:HE22	1.29	0.80
2:A:779:ALA:HB3	2:A:786:PHE:HB2	1.65	0.78
2:A:736:GLY:HA2	8:A:1564:HOH:O	1.84	0.77
2:A:146:GLN:HE22	2:A:805:ARG:H	1.33	0.76
2:A:749:ASN:HD21	2:A:751:GLU:HB3	1.50	0.76
2:A:520:GLN:NE2	2:A:523:ARG:HD3	2.03	0.72
2:A:1145:LEU:HB3	2:A:1150:LEU:HD22	1.72	0.72
2:A:743:THR:CG2	2:A:744:THR:H	1.99	0.71
2:A:957:LYS:HE3	2:A:1026:ALA:HB2	1.73	0.71
2:A:39:ARG:HH11	2:A:39:ARG:HG2	1.55	0.70
2:A:724:THR:HG22	2:A:726:GLN:N	2.05	0.70
2:A:1090:LEU:HB2	8:A:1545:HOH:O	1.91	0.70
2:A:532:ASN:OD1	2:A:535:GLN:HG3	1.92	0.69
2:A:944:GLN:HB3	2:A:948:MET:HE2	1.73	0.69
2:A:781:TYR:CE1	8:A:1564:HOH:O	2.46	0.69
2:A:520:GLN:NE2	2:A:526:ARG:NH1	2.41	0.68

Continued on next page...

Continued from previous page...

Atom-1	Atom-2	Interatomic distance (Å)	Clash overlap (Å)
2:A:851:ARG:HH11	2:A:864:GLN:HE21	1.42	0.68
2:A:536:GLN:HE22	2:A:685:THR:H	1.41	0.68
2:A:1058:LEU:HD13	8:A:1434:HOH:O	1.93	0.67
2:A:1004:HIS:C	2:A:1006:PRO:HD3	2.15	0.67
2:A:821:ILE:HD12	2:A:845:LEU:HD13	1.77	0.67
2:A:39:ARG:HE	2:A:208:LEU:HD22	1.60	0.67
2:A:829:VAL:HG13	2:A:890:TRP:CE2	2.29	0.67
2:A:92:VAL:CG1	2:A:383:GLU:HB3	2.24	0.67
2:A:227:PRO:HB2	2:A:228:PRO:HD3	1.77	0.67
2:A:1087:ASP:HA	8:A:1545:HOH:O	1.93	0.67
2:A:542:HIS:HE2	2:A:690:GLU:HG3	1.59	0.66
2:A:193:ILE:HD13	2:A:229:LEU:HD21	1.77	0.66
2:A:536:GLN:HA	2:A:536:GLN:HE21	1.60	0.66
2:A:783:LYS:HG3	2:A:797:ARG:NH1	2.11	0.66
2:A:363:ARG:NH2	8:A:1590:HOH:O	2.24	0.66
2:A:66:LYS:HB3	2:A:97:CYS:HA	1.78	0.65
2:A:410:GLU:N	2:A:649:GLN:NE2	2.41	0.65
2:A:90:ASP:HB3	8:A:1569:HOH:O	1.95	0.65
2:A:298:GLU:HB2	2:A:311:MET:CE	2.26	0.65
2:A:1262:GLN:HG2	2:A:1265:ARG:NH1	2.12	0.65
2:A:171:VAL:HG11	2:A:1090:LEU:HD11	1.79	0.65
2:A:296:ASN:ND2	2:A:311:MET:HB2	2.12	0.65
2:A:532:ASN:OD1	2:A:534:PRO:HD2	1.98	0.63
2:A:406:GLY:HA3	2:A:630:GLU:O	1.99	0.63
2:A:285:MET:HG3	2:A:365:ILE:HD11	1.79	0.63
2:A:246:ASP:O	2:A:250:VAL:HG23	1.98	0.63
2:A:957:LYS:HE2	2:A:1024:ALA:O	1.99	0.63
2:A:90:ASP:O	2:A:92:VAL:N	2.32	0.63
2:A:1112:MET:CE	2:A:1150:LEU:HD11	2.29	0.63
2:A:393:PRO:HG3	2:A:592:SER:HA	1.79	0.63
2:A:540:ALA:HB3	2:A:541:PRO:HD3	1.81	0.63
2:A:22:GLN:HE22	2:A:878:VAL:H	1.41	0.62
2:A:396:LYS:HD2	2:A:765:GLU:HB3	1.79	0.62
2:A:408:ILE:HB	2:A:411:ILE:HD11	1.81	0.62
2:A:1219:ARG:O	2:A:1223:ARG:HG3	1.99	0.62
2:A:731:CYS:HA	8:A:1564:HOH:O	1.99	0.62
2:A:1112:MET:HE1	2:A:1150:LEU:HD11	1.82	0.61
2:A:22:GLN:HE21	2:A:878:VAL:H	1.44	0.61
2:A:564:ILE:HG13	2:A:565:GLU:HG2	1.81	0.61
2:A:194:CYS:SG	2:A:206:PRO:HG2	2.40	0.61
2:A:1007:PRO:HD2	2:A:1144:GLN:NE2	2.16	0.61

Continued on next page...

Continued from previous page...

Atom-1	Atom-2	Interatomic distance (Å)	Clash overlap (Å)
2:A:1005:ASN:N	2:A:1006:PRO:HD3	2.16	0.61
2:A:411:ILE:C	2:A:411:ILE:HD12	2.21	0.61
2:A:101:GLU:HG2	2:A:102:LEU:HG	1.82	0.60
2:A:425:LEU:HD13	2:A:698:MET:HE3	1.84	0.60
2:A:965:GLU:O	2:A:969:GLN:HG3	2.02	0.60
2:A:944:GLN:HB3	2:A:948:MET:CE	2.31	0.60
2:A:1005:ASN:HB2	2:A:1130:ARG:HH22	1.67	0.60
2:A:716:VAL:HG12	2:A:720:MET:CE	2.32	0.59
2:A:293:TYR:CZ	2:A:1074:ARG:NH2	2.70	0.59
2:A:1206:HIS:HB2	2:A:1209:THR:OG1	2.03	0.59
2:A:995:TRP:CZ2	2:A:1006:PRO:HG3	2.38	0.59
2:A:76:ASP:OD2	2:A:80:ARG:HG3	2.03	0.59
2:A:926:THR:HG21	2:A:1246:HIS:CG	2.38	0.59
2:A:223:THR:HG21	8:A:1582:HOH:O	2.02	0.58
2:A:814:TRP:O	2:A:815:PRO:C	2.41	0.58
2:A:819:ASP:OD1	2:A:953:ARG:NH1	2.36	0.58
2:A:572:VAL:HG13	2:A:789:GLY:O	2.03	0.58
2:A:81:VAL:N	2:A:671:ASN:HD21	1.97	0.58
2:A:754:GLN:HE21	2:A:775:TYR:HD2	1.51	0.57
2:A:957:LYS:HD2	2:A:957:LYS:N	2.19	0.57
2:A:582:ILE:HG21	2:A:757:LEU:CD2	2.34	0.57
2:A:1005:ASN:ND2	2:A:1263:GLU:HB3	2.07	0.57
2:A:1065:GLU:H	2:A:1065:GLU:CD	2.08	0.57
2:A:1201:PRO:HB2	2:A:1204:GLY:O	2.05	0.57
2:A:84:LYS:HD2	2:A:86:TYR:CZ	2.40	0.57
2:A:1246:HIS:HB3	8:A:1434:HOH:O	2.05	0.56
2:A:542:HIS:HE2	2:A:690:GLU:CG	2.18	0.56
2:A:107:GLU:O	2:A:108:THR:CB	2.53	0.56
2:A:814:TRP:HB3	2:A:815:PRO:HD3	1.88	0.56
2:A:1120:ASP:HB3	2:A:1123:ALA:HB2	1.87	0.56
2:A:541:PRO:HB2	2:A:648:ILE:HD11	1.87	0.56
2:A:114:ARG:HG3	2:A:114:ARG:HH11	1.71	0.56
2:A:854:THR:HG21	2:A:863:LEU:HG	1.87	0.55
2:A:92:VAL:HG11	2:A:383:GLU:HB3	1.88	0.55
2:A:56:MET:HG2	2:A:188:TRP:CE2	2.41	0.55
2:A:363:ARG:HH22	2:A:834:GLN:HE22	1.53	0.55
2:A:80:ARG:HA	2:A:671:ASN:ND2	2.20	0.55
2:A:926:THR:CG2	2:A:1246:HIS:CG	2.89	0.55
2:A:1029:GLU:N	2:A:1029:GLU:OE1	2.37	0.55
2:A:433:ALA:HB1	2:A:610:VAL:HG23	1.88	0.55
2:A:523:ARG:HG2	2:A:523:ARG:HH11	1.70	0.55

Continued on next page...

Continued from previous page...

Atom-1	Atom-2	Interatomic distance (Å)	Clash overlap (Å)
2:A:603:MET:HE1	2:A:651:LEU:HD23	1.88	0.55
2:A:1085:ASN:O	2:A:1088:PRO:HD2	2.07	0.55
2:A:907:ARG:HH12	2:A:1060:LYS:HE3	1.72	0.54
2:A:188:TRP:CZ2	2:A:192:GLU:HG3	2.42	0.54
2:A:1072:ASP:OD1	2:A:1074:ARG:HD3	2.07	0.54
2:A:477:LEU:HB3	2:A:496:GLN:HB3	1.88	0.54
2:A:408:ILE:HB	2:A:411:ILE:CD1	2.38	0.54
2:A:94:VAL:HG22	2:A:139:ILE:HG23	1.90	0.54
2:A:446:LEU:HD13	2:A:1149:GLY:HA3	1.90	0.54
8:B:1454:HOH:O	2:A:530:PRO:HB2	2.08	0.54
2:A:814:TRP:O	2:A:816:ALA:N	2.41	0.54
2:A:727:ARG:HD3	8:A:1562:HOH:O	2.07	0.54
2:A:409:GLY:HA3	2:A:649:GLN:NE2	2.23	0.54
2:A:998:TYR:CE2	2:A:1139:LYS:HD3	2.42	0.53
2:A:724:THR:H	2:A:728:ASN:HD22	1.56	0.53
2:A:83:ARG:HG3	2:A:83:ARG:HH11	1.73	0.53
2:A:564:ILE:HG13	2:A:565:GLU:CG	2.38	0.53
2:A:104:GLU:CG	2:A:116:SER:HA	2.34	0.53
2:A:393:PRO:CG	2:A:592:SER:HA	2.38	0.53
2:A:603:MET:HE3	2:A:652:SER:OG	2.09	0.53
2:A:836:GLN:HG2	2:A:886:TRP:CE3	2.44	0.53
2:A:127:ASP:O	2:A:131:ARG:HG3	2.09	0.52
2:A:47:ASP:OD1	2:A:195:ARG:NH2	2.34	0.52
2:A:599:LEU:O	2:A:603:MET:HG2	2.09	0.52
2:A:24:ASN:O	2:A:28:GLU:HG3	2.09	0.52
2:A:473:ILE:HG21	2:A:507:VAL:HG11	1.90	0.52
2:A:299:TRP:CD2	2:A:303:ARG:HG2	2.45	0.52
2:A:167:LEU:HD23	2:A:837:ARG:HD2	1.90	0.52
2:A:907:ARG:CB	2:A:908:PRO:HD3	2.37	0.52
2:A:578:PRO:HB2	2:A:742:GLY:HA3	1.92	0.52
1:B:1285:G:O6	2:A:518:ARG:HD2	2.09	0.52
2:A:76:ASP:OD2	2:A:80:ARG:NH1	2.43	0.52
2:A:295:PRO:HD2	2:A:789:GLY:HA3	1.91	0.52
2:A:42:VAL:HG22	2:A:156:LEU:HD13	1.92	0.52
2:A:1172:LEU:HD21	2:A:1217:TRP:HA	1.91	0.52
2:A:425:LEU:HB2	2:A:698:MET:HE3	1.91	0.52
2:A:1012:VAL:HB	2:A:1013:PRO:HD3	1.90	0.52
2:A:451:MET:HA	2:A:451:MET:CE	2.40	0.52
2:A:35:SER:HB3	5:A:1425:GDP:N7	2.25	0.52
2:A:314:MET:CE	2:A:315:PRO:HD2	2.40	0.52
2:A:736:GLY:CA	8:A:1564:HOH:O	2.53	0.51

Continued on next page...

Continued from previous page...

Atom-1	Atom-2	Interatomic distance (Å)	Clash overlap (Å)
2:A:149:ALA:HB1	2:A:150:PRO:CD	2.41	0.51
2:A:536:GLN:NE2	2:A:685:THR:HG23	2.25	0.51
2:A:926:THR:HG23	2:A:1246:HIS:CD2	2.45	0.51
2:A:271:LEU:HD23	8:A:1569:HOH:O	2.09	0.51
2:A:1120:ASP:HB3	2:A:1123:ALA:CB	2.41	0.51
2:A:338:TYR:O	2:A:340:LEU:HG	2.11	0.51
2:A:374:GLY:O	2:A:799:PRO:HG2	2.10	0.51
2:A:423:ARG:O	2:A:427:ARG:HG3	2.10	0.51
2:A:425:LEU:HD13	2:A:698:MET:CE	2.41	0.50
2:A:1201:PRO:HG3	2:A:1209:THR:HG21	1.93	0.50
2:A:1100:GLN:HG3	2:A:1101:SER:N	2.25	0.50
2:A:304:SER:O	2:A:1104:LYS:HE3	2.10	0.50
2:A:13:ILE:HD13	2:A:163:ALA:HB3	1.93	0.50
2:A:749:ASN:ND2	2:A:752:THR:H	2.10	0.50
2:A:1007:PRO:HD2	2:A:1144:GLN:CD	2.32	0.50
2:A:659:PHE:CZ	2:A:681:PRO:CG	2.93	0.50
2:A:409:GLY:HA3	2:A:627:VAL:HG21	1.93	0.50
2:A:32:LYS:HG3	5:A:1425:GDP:O6	2.12	0.50
2:A:520:GLN:HE22	2:A:523:ARG:HD3	1.76	0.50
2:A:632:VAL:HB	2:A:635:VAL:HB	1.93	0.50
2:A:107:GLU:O	2:A:108:THR:HB	2.11	0.50
2:A:892:MET:HB2	2:A:1232:THR:HG23	1.93	0.50
2:A:411:ILE:O	2:A:411:ILE:HD12	2.12	0.50
2:A:513:THR:HG21	2:A:529:MET:HG2	1.94	0.50
2:A:757:LEU:HD22	2:A:773:ILE:HG21	1.94	0.50
2:A:1081:ILE:HD12	2:A:1088:PRO:CB	2.41	0.50
2:A:520:GLN:CD	2:A:526:ARG:HH12	2.15	0.50
2:A:358:ASP:O	2:A:362:VAL:HG22	2.11	0.49
2:A:208:LEU:CB	2:A:210:LEU:HD21	2.42	0.49
1:B:1286:C:H6	1:B:1286:C:O5'	1.95	0.49
2:A:410:GLU:H	2:A:649:GLN:HE21	1.50	0.49
2:A:828:GLY:HA3	2:A:838:TRP:NE1	2.27	0.49
2:A:716:VAL:HG12	2:A:720:MET:HE1	1.94	0.49
2:A:83:ARG:HG2	2:A:92:VAL:HA	1.93	0.49
1:B:1285:G:H5''	2:A:460:GLY:N	2.28	0.49
2:A:294:CYS:SG	2:A:314:MET:HB3	2.53	0.49
2:A:839:ILE:HD13	2:A:876:PRO:HG2	1.95	0.49
2:A:904:SER:HB3	2:A:1229:MET:SD	2.53	0.49
2:A:448:GLN:NE2	2:A:620:MET:H	2.11	0.49
2:A:1005:ASN:HD21	2:A:1263:GLU:CB	2.11	0.49
2:A:582:ILE:HG21	2:A:757:LEU:HD21	1.94	0.49

Continued on next page...

Continued from previous page...

Atom-1	Atom-2	Interatomic distance (Å)	Clash overlap (Å)
2:A:538:VAL:HG13	2:A:651:LEU:HB2	1.94	0.49
2:A:299:TRP:CE2	2:A:303:ARG:HG2	2.48	0.49
2:A:114:ARG:HB2	2:A:215:PHE:CE1	2.48	0.49
2:A:581:SER:HA	2:A:738:MET:O	2.11	0.49
2:A:1052:LEU:HD22	2:A:1259:TRP:CE2	2.48	0.48
2:A:523:ARG:NH1	2:A:523:ARG:HG2	2.28	0.48
2:A:856:ILE:HG22	2:A:856:ILE:O	2.13	0.48
2:A:1082:ASP:HB2	2:A:1083:PRO:HD2	1.95	0.48
2:A:377:LEU:N	2:A:377:LEU:HD12	2.28	0.48
2:A:740:ILE:N	2:A:740:ILE:HD12	2.29	0.48
2:A:568:ILE:N	2:A:569:PRO:CD	2.76	0.48
2:A:1064:CYS:HB3	2:A:1065:GLU:OE2	2.14	0.48
2:A:800:ILE:HG13	8:A:1519:HOH:O	2.13	0.48
2:A:501:PRO:HD2	2:A:504:HIS:HD2	1.77	0.48
8:B:1563:HOH:O	2:A:515:MET:HB3	2.14	0.48
2:A:39:ARG:NH1	2:A:39:ARG:HG2	2.27	0.48
2:A:455:TYR:O	2:A:490:LYS:HE2	2.13	0.48
2:A:1169:THR:HB	8:A:1594:HOH:O	2.12	0.48
2:A:915:VAL:HG13	2:A:920:VAL:HG22	1.96	0.48
2:A:208:LEU:HB3	2:A:210:LEU:HD21	1.94	0.47
2:A:1073:LEU:HG	2:A:1093:VAL:HG11	1.96	0.47
2:A:1052:LEU:HD11	2:A:1176:VAL:HG23	1.97	0.47
2:A:716:VAL:HG12	2:A:720:MET:HE3	1.97	0.47
2:A:1082:ASP:HB2	2:A:1083:PRO:CD	2.44	0.47
2:A:940:LEU:O	2:A:941:LYS:HB2	2.14	0.47
2:A:517:LEU:HD23	2:A:527:SER:HA	1.96	0.47
2:A:223:THR:HG22	2:A:225:ALA:N	2.06	0.47
2:A:523:ARG:HG2	2:A:524:ARG:N	2.29	0.47
2:A:93:TYR:HE2	8:A:1569:HOH:O	1.97	0.47
2:A:473:ILE:HG13	2:A:475:VAL:HG23	1.95	0.47
2:A:855:MET:CE	2:A:858:GLU:H	2.28	0.47
2:A:1198:LYS:HG2	2:A:1241:TYR:CE1	2.50	0.47
2:A:271:LEU:HD13	2:A:377:LEU:CD2	2.43	0.47
2:A:1051:LYS:NZ	2:A:1262:GLN:OE1	2.48	0.47
2:A:659:PHE:CZ	2:A:681:PRO:HG3	2.48	0.47
2:A:855:MET:HE3	2:A:858:GLU:H	1.79	0.47
2:A:277:PHE:HB2	2:A:278:PRO:HD3	1.95	0.47
2:A:146:GLN:NE2	2:A:805:ARG:H	2.08	0.47
2:A:957:LYS:HD3	2:A:1022:GLU:HA	1.96	0.47
2:A:1014:HIS:O	2:A:1018:GLN:HG3	2.16	0.47
2:A:881:PHE:O	2:A:909:LEU:HD12	2.15	0.47

Continued on next page...

Continued from previous page...

Atom-1	Atom-2	Interatomic distance (Å)	Clash overlap (Å)
2:A:434:ALA:HA	2:A:609:GLY:O	2.15	0.46
2:A:1081:ILE:HD12	2:A:1088:PRO:HB2	1.97	0.46
2:A:366:ARG:NH1	2:A:367:ASP:OD1	2.45	0.46
2:A:1066:ALA:HB1	2:A:1236:VAL:HG21	1.98	0.46
2:A:39:ARG:NE	2:A:208:LEU:HD22	2.29	0.46
2:A:582:ILE:HG21	2:A:757:LEU:HD22	1.96	0.46
2:A:520:GLN:NE2	2:A:526:ARG:HH12	2.14	0.46
2:A:114:ARG:HG3	2:A:114:ARG:NH1	2.30	0.46
2:A:295:PRO:HD3	8:A:1432:HOH:O	2.16	0.46
2:A:73:TYR:HB2	2:A:132:ILE:HG23	1.98	0.46
2:A:1263:GLU:OE2	2:A:1263:GLU:HA	2.16	0.46
2:A:1198:LYS:N	2:A:1198:LYS:HD2	2.31	0.46
2:A:531:LEU:HD11	2:A:684:SER:HB2	1.97	0.46
2:A:856:ILE:HB	2:A:859:SER:CB	2.38	0.45
2:A:73:TYR:HB3	2:A:132:ILE:HD12	1.97	0.45
2:A:281:THR:O	2:A:285:MET:HG2	2.16	0.45
2:A:39:ARG:CG	2:A:39:ARG:HH11	2.27	0.45
2:A:286:TYR:C	2:A:288:SER:N	2.68	0.45
2:A:83:ARG:HG3	2:A:83:ARG:NH1	2.31	0.45
1:B:1285:G:C5	2:A:528:ILE:HG12	2.51	0.45
2:A:245:LEU:HA	2:A:367:ASP:OD2	2.15	0.45
2:A:542:HIS:NE2	2:A:690:GLU:CG	2.69	0.45
2:A:659:PHE:CZ	2:A:681:PRO:HG2	2.52	0.45
2:A:379:ARG:HH12	2:A:387:GLN:NE2	2.13	0.45
2:A:80:ARG:HA	2:A:671:ASN:HD21	1.82	0.45
2:A:1150:LEU:CD1	2:A:1150:LEU:N	2.79	0.45
2:A:373:SER:OG	2:A:375:ILE:HG12	2.17	0.45
2:A:146:GLN:NE2	2:A:804:GLU:HA	2.31	0.45
2:A:167:LEU:CD2	2:A:837:ARG:HD2	2.47	0.45
2:A:1052:LEU:HD11	2:A:1176:VAL:CG2	2.47	0.45
2:A:1112:MET:HE3	2:A:1150:LEU:HD11	1.99	0.44
2:A:536:GLN:HA	2:A:536:GLN:NE2	2.31	0.44
2:A:1005:ASN:N	2:A:1006:PRO:CD	2.79	0.44
2:A:730:VAL:O	8:A:1564:HOH:O	2.21	0.44
2:A:270:ILE:HD12	2:A:373:SER:CB	2.48	0.44
2:A:589:CYS:SG	2:A:734:ASP:HB3	2.58	0.44
2:A:781:TYR:HE1	8:A:1564:HOH:O	1.89	0.44
2:A:595:TRP:HA	2:A:599:LEU:HB2	2.00	0.44
2:A:446:LEU:HD22	2:A:1149:GLY:C	2.38	0.44
2:A:210:LEU:HB3	2:A:211:SER:H	1.62	0.44
1:B:1285:G:N3	2:A:683:GLY:HA2	2.33	0.44

Continued on next page...

Continued from previous page...

Atom-1	Atom-2	Interatomic distance (Å)	Clash overlap (Å)
2:A:851:ARG:HB2	2:A:864:GLN:HE22	1.81	0.44
2:A:797:ARG:C	2:A:799:PRO:HD3	2.38	0.44
2:A:270:ILE:HD12	2:A:373:SER:HB2	1.99	0.44
2:A:719:LEU:O	2:A:723:LEU:HG	2.17	0.44
2:A:957:LYS:O	2:A:960:ARG:HG3	2.18	0.44
2:A:557:PRO:HD2	2:A:731:CYS:O	2.17	0.44
2:A:1168:ASN:ND2	2:A:1169:THR:H	2.16	0.44
2:A:817:ILE:O	2:A:821:ILE:HG12	2.18	0.43
2:A:245:LEU:HD22	2:A:367:ASP:HA	1.99	0.43
2:A:223:THR:CG2	2:A:224:SER:N	2.81	0.43
2:A:302:PRO:HG2	2:A:305:ASP:OD1	2.18	0.43
2:A:357:HIS:CE1	2:A:788:PHE:HB2	2.53	0.43
2:A:114:ARG:HB2	2:A:215:PHE:HE1	1.82	0.43
2:A:1150:LEU:HD12	2:A:1150:LEU:N	2.32	0.43
2:A:456:VAL:HG21	2:A:977:TYR:CE2	2.52	0.43
2:A:84:LYS:HD2	2:A:86:TYR:CE2	2.54	0.43
2:A:626:ILE:CG2	2:A:638:ALA:HB1	2.49	0.43
2:A:557:PRO:CD	2:A:731:CYS:O	2.67	0.43
2:A:423:ARG:HE	2:A:427:ARG:NH2	2.17	0.43
2:A:375:ILE:O	2:A:375:ILE:HG13	2.18	0.43
2:A:464:ALA:O	2:A:468:GLU:HG2	2.19	0.43
2:A:512:ASP:OD1	2:A:660:SER:CB	2.67	0.43
2:A:223:THR:HG22	2:A:224:SER:N	2.34	0.43
2:A:40:SER:O	2:A:44:LYS:HG3	2.18	0.43
2:A:815:PRO:HB2	2:A:953:ARG:O	2.19	0.43
2:A:318:ALA:HB2	8:A:1588:HOH:O	2.19	0.43
2:A:984:LEU:O	2:A:987:ARG:HB2	2.19	0.43
2:A:178:ILE:HA	2:A:179:PRO:HD3	1.94	0.43
2:A:201:LEU:HA	2:A:202:PRO:HD3	1.78	0.42
2:A:230:LEU:O	2:A:234:VAL:HG23	2.19	0.42
2:A:1238:VAL:CG1	2:A:1239:ASP:N	2.81	0.42
2:A:879:LYS:NZ	2:A:883:SER:O	2.44	0.42
2:A:116:SER:HB3	2:A:119:ILE:HG13	2.01	0.42
2:A:145:ARG:O	2:A:805:ARG:HD2	2.20	0.42
2:A:455:TYR:CE1	2:A:533:VAL:HG13	2.54	0.42
2:A:523:ARG:NH1	2:A:524:ARG:O	2.52	0.42
2:A:303:ARG:HH11	2:A:303:ARG:HG3	1.85	0.42
2:A:490:LYS:HA	2:A:493:GLN:HB2	2.00	0.42
2:A:575:SER:HB2	8:A:1540:HOH:O	2.18	0.42
2:A:120:GLU:O	2:A:124:LYS:HG3	2.17	0.42
2:A:1060:LYS:HE3	8:A:1586:HOH:O	2.20	0.42

Continued on next page...

Continued from previous page...

Atom-1	Atom-2	Interatomic distance (Å)	Clash overlap (Å)
2:A:205:ALA:HA	2:A:206:PRO:HD3	1.77	0.42
2:A:468:GLU:H	2:A:468:GLU:HG2	1.73	0.42
2:A:834:GLN:HB3	8:A:1456:HOH:O	2.19	0.42
2:A:863:LEU:HD23	2:A:863:LEU:HA	1.85	0.42
2:A:1029:GLU:O	2:A:1033:GLU:HG3	2.20	0.42
2:A:632:VAL:HG12	2:A:633:VAL:N	2.35	0.42
2:A:268:TRP:NE1	2:A:272:LYS:HD2	2.35	0.42
2:A:410:GLU:N	2:A:649:GLN:HE21	2.14	0.42
2:A:851:ARG:HA	2:A:863:LEU:O	2.20	0.42
2:A:906:ILE:O	2:A:910:MET:HG3	2.20	0.42
2:A:1062:ARG:HD2	2:A:1243:GLU:OE2	2.19	0.42
2:A:287:GLU:HA	2:A:322:ARG:HB3	2.01	0.42
2:A:815:PRO:HG2	2:A:1034:MET:CE	2.49	0.41
2:A:188:TRP:CE2	2:A:192:GLU:HG3	2.55	0.41
2:A:2:SER:N	2:A:48:GLU:OE1	2.54	0.41
2:A:485:VAL:HG12	2:A:1021:GLN:HG3	2.02	0.41
2:A:39:ARG:NH1	2:A:39:ARG:CG	2.84	0.41
2:A:833:LEU:HD12	2:A:838:TRP:CD2	2.55	0.41
2:A:1011:ASP:O	2:A:1014:HIS:N	2.54	0.41
2:A:1252:LEU:HG	2:A:1256:PHE:CE2	2.54	0.41
2:A:15:SER:N	2:A:20:THR:HG22	2.34	0.41
2:A:570:LEU:HD21	2:A:730:VAL:HG21	2.01	0.41
2:A:845:LEU:HD23	2:A:845:LEU:HA	1.91	0.41
2:A:651:LEU:HG	2:A:655:TYR:CE2	2.55	0.41
2:A:1081:ILE:HD12	2:A:1088:PRO:HB3	2.02	0.41
2:A:1146:LEU:HD23	2:A:1150:LEU:O	2.20	0.41
2:A:814:TRP:CG	2:A:815:PRO:N	2.88	0.41
2:A:516:GLY:O	2:A:517:LEU:HD23	2.19	0.41
2:A:73:TYR:CB	2:A:132:ILE:HG23	2.51	0.41
2:A:778:THR:CG2	2:A:779:ALA:N	2.84	0.41
2:A:520:GLN:CD	2:A:526:ARG:NH1	2.74	0.41
2:A:783:LYS:HG3	2:A:797:ARG:HH12	1.83	0.41
2:A:346:GLU:O	2:A:350:ARG:HG3	2.20	0.41
2:A:983:GLU:O	2:A:987:ARG:HG3	2.21	0.41
2:A:332:ARG:O	2:A:336:GLU:HG2	2.20	0.41
2:A:436:MET:HE1	2:A:437:ALA:HA	2.03	0.41
2:A:211:SER:C	2:A:213:GLY:H	2.23	0.41
2:A:22:GLN:HE21	2:A:878:VAL:N	2.16	0.41
2:A:834:GLN:NE2	8:A:1590:HOH:O	2.29	0.41
2:A:798:HIS:N	2:A:799:PRO:HD3	2.36	0.41
2:A:34:PHE:HD1	2:A:156:LEU:HD23	1.86	0.41

Continued on next page...

Continued from previous page...

Atom-1	Atom-2	Interatomic distance (Å)	Clash overlap (Å)
2:A:421:ILE:HD12	2:A:421:ILE:HA	1.87	0.41
2:A:249:LEU:HD23	2:A:252:LEU:HD12	2.03	0.41
1:B:1284:A:C2	2:A:807:ASN:ND2	2.89	0.41
2:A:705:VAL:O	2:A:708:PRO:HD2	2.21	0.41
2:A:992:ARG:O	2:A:995:TRP:N	2.54	0.41
2:A:821:ILE:HD12	2:A:845:LEU:CD1	2.49	0.41
1:B:1283:U:H5''	8:A:1596:HOH:O	2.21	0.41
2:A:390:THR:HG22	2:A:391:GLN:N	2.35	0.40
2:A:1137:ASP:O	2:A:1140:ALA:HB3	2.21	0.40
2:A:1138:LYS:O	2:A:1141:LEU:N	2.54	0.40
2:A:372:THR:O	2:A:796:SER:HB2	2.21	0.40
2:A:92:VAL:HG13	2:A:383:GLU:HB3	2.03	0.40
2:A:332:ARG:NH1	2:A:332:ARG:HG2	2.37	0.40
2:A:444:ASP:HA	2:A:445:PRO:HD3	1.95	0.40
2:A:700:GLU:OE2	2:A:700:GLU:C	2.60	0.40
2:A:483:LEU:HD23	2:A:483:LEU:HA	1.94	0.40
2:A:98:SER:HG	2:A:101:GLU:CD	2.25	0.40
2:A:492:PHE:O	2:A:496:GLN:HG3	2.21	0.40
2:A:448:GLN:HE21	2:A:448:GLN:HB3	1.68	0.40
2:A:85:THR:HG22	8:A:1487:HOH:O	2.22	0.40
2:A:404:TRP:O	2:A:415:LYS:HE3	2.22	0.40
2:A:951:LEU:HD13	2:A:1037:THR:HG22	2.03	0.40

There are no symmetry-related clashes.

5.3 Torsion angles [i](#)

5.3.1 Protein backbone [i](#)

In the following table, the Percentiles column shows the percent Ramachandran outliers of the chain as a percentile score with respect to all X-ray entries followed by that with respect to entries of similar resolution.

The Analysed column shows the number of residues for which the backbone conformation was analysed, and the total number of residues.

Mol	Chain	Analysed	Favoured	Allowed	Outliers	Percentiles
2	A	1262/1267 (100%)	1174 (93%)	70 (6%)	18 (1%)	14 42

All (18) Ramachandran outliers are listed below:

Mol	Chain	Res	Type
2	A	91	ASP
2	A	108	THR
2	A	814	TRP
2	A	146	GLN
2	A	687	THR
2	A	10	GLY
2	A	263	SER
2	A	964	ARG
2	A	110	THR
2	A	1185	MET
2	A	498	ALA
2	A	557	PRO
2	A	815	PRO
2	A	631	SER
2	A	567	VAL
2	A	635	VAL
2	A	1005	ASN
2	A	99	ILE

5.3.2 Protein sidechains [i](#)

In the following table, the Percentiles column shows the percent sidechain outliers of the chain as a percentile score with respect to all X-ray entries followed by that with respect to entries of similar resolution.

The Analysed column shows the number of residues for which the sidechain conformation was analysed, and the total number of residues.

Mol	Chain	Analysed	Rotameric	Outliers	Percentiles
2	A	1081/1083 (100%)	1038 (96%)	43 (4%)	38 73

All (43) residues with a non-rotameric sidechain are listed below:

Mol	Chain	Res	Type
2	A	35	SER
2	A	37	PHE
2	A	80	ARG
2	A	85	THR
2	A	107	GLU
2	A	167	LEU
2	A	187	LEU
2	A	300	LEU
2	A	366	ARG

Continued on next page...

Continued from previous page...

Mol	Chain	Res	Type
2	A	387	GLN
2	A	414	LEU
2	A	431	LEU
2	A	436	MET
2	A	466	LEU
2	A	470	LEU
2	A	476	SER
2	A	518	ARG
2	A	528	ILE
2	A	536	GLN
2	A	538	VAL
2	A	578	PRO
2	A	700	GLU
2	A	712	ASP
2	A	726	GLN
2	A	735	ASP
2	A	761	SER
2	A	784	LEU
2	A	845	LEU
2	A	890	TRP
2	A	894	THR
2	A	909	LEU
2	A	923	ARG
2	A	980	GLN
2	A	984	LEU
2	A	990	ARG
2	A	1052	LEU
2	A	1063	MET
2	A	1065	GLU
2	A	1077	LEU
2	A	1103	ARG
2	A	1121	VAL
2	A	1151	GLN
2	A	1182	ASP

Some sidechains can be flipped to improve hydrogen bonding and reduce clashes. All (25) such sidechains are listed below:

Mol	Chain	Res	Type
2	A	22	GLN
2	A	121	ASN
2	A	146	GLN
2	A	283	HIS

Continued on next page...

Continued from previous page...

Mol	Chain	Res	Type
2	A	296	ASN
2	A	387	GLN
2	A	448	GLN
2	A	474	ASN
2	A	504	HIS
2	A	520	GLN
2	A	536	GLN
2	A	580	GLN
2	A	649	GLN
2	A	671	ASN
2	A	710	HIS
2	A	728	ASN
2	A	749	ASN
2	A	754	GLN
2	A	834	GLN
2	A	864	GLN
2	A	969	GLN
2	A	980	GLN
2	A	1005	ASN
2	A	1165	GLN
2	A	1168	ASN

5.3.3 RNA ⓘ

Mol	Chain	Analysed	Backbone Outliers	Pucker Outliers
1	B	3/6 (50%)	0	0

There are no RNA backbone outliers to report.

There are no RNA pucker outliers to report.

5.4 Non-standard residues in protein, DNA, RNA chains ⓘ

There are no non-standard protein/DNA/RNA residues in this entry.

5.5 Carbohydrates ⓘ

There are no carbohydrates in this entry.

5.6 Ligand geometry

Of 6 ligands modelled in this entry, 2 are monoatomic - leaving 4 for Mogul analysis.

In the following table, the Counts columns list the number of bonds (or angles) for which Mogul statistics could be retrieved, the number of bonds (or angles) that are observed in the model and the number of bonds (or angles) that are defined in the chemical component dictionary. The Link column lists molecule types, if any, to which the group is linked. The Z score for a bond length (or angle) is the number of standard deviations the observed value is removed from the expected value. A bond length (or angle) with $|Z| > 2$ is considered an outlier worth inspection. RMSZ is the root-mean-square of all Z scores of the bond lengths (or angles).

Mol	Type	Chain	Res	Link	Bond lengths			Bond angles		
					Counts	RMSZ	$\# Z > 2$	Counts	RMSZ	$\# Z > 2$
6	CH1	A	1291	3	21,29,29	1.06	0	27,45,45	3.03	12 (44%)
7	GH3	A	1293	-	25,33,33	1.70	4 (16%)	29,52,52	2.46	5 (17%)
4	G7M	A	1424	5	22,27,27	2.31	11 (50%)	25,42,42	4.23	17 (68%)
5	GDP	A	1425	4	20,29,30	2.64	7 (35%)	24,44,47	3.59	13 (54%)

In the following table, the Chirals column lists the number of chiral outliers, the number of chiral centers analysed, the number of these observed in the model and the number defined in the chemical component dictionary. Similar counts are reported in the Torsion and Rings columns. '-' means no outliers of that kind were identified.

Mol	Type	Chain	Res	Link	Chirals	Torsions	Rings
6	CH1	A	1291	3	-	0/18/34/34	0/2/2/2
7	GH3	A	1293	-	-	0/18/34/34	0/3/3/3
4	G7M	A	1424	5	-	0/6/26/26	0/3/3/3
5	GDP	A	1425	4	-	0/9/31/32	0/3/3/3

All (22) bond length outliers are listed below:

Mol	Chain	Res	Type	Atoms	Z	Observed(Å)	Ideal(Å)
4	A	1424	G7M	P-O5'	-5.03	1.43	1.60
4	A	1424	G7M	C2'-C3'	-4.16	1.42	1.53
5	A	1425	GDP	C2'-C3'	-3.48	1.43	1.53
5	A	1425	GDP	O4'-C4'	-2.82	1.38	1.45
4	A	1424	G7M	C3'-C4'	-2.70	1.45	1.53
4	A	1424	G7M	O3'-C3'	-2.61	1.36	1.43
7	A	1293	GH3	PB-O2B	-2.49	1.44	1.54
4	A	1424	G7M	O2'-C2'	-2.26	1.37	1.43
4	A	1424	G7M	O6-C6	-2.26	1.19	1.24
4	A	1424	G7M	C8-N7	-2.19	1.29	1.33
4	A	1424	G7M	P-OP1	2.08	1.58	1.51

Continued on next page...

Continued from previous page...

Mol	Chain	Res	Type	Atoms	Z	Observed(Å)	Ideal(Å)
4	A	1424	G7M	O4'-C1'	2.67	1.44	1.41
5	A	1425	GDP	PA-O5'	2.95	1.72	1.59
7	A	1293	GH3	O4'-C1'	3.17	1.45	1.41
4	A	1424	G7M	C6-N1	3.17	1.39	1.33
4	A	1424	G7M	C8-N9	3.37	1.39	1.33
5	A	1425	GDP	C4-N3	3.44	1.41	1.35
5	A	1425	GDP	C6-C5	3.58	1.48	1.41
7	A	1293	GH3	C2-N1	3.71	1.42	1.35
7	A	1293	GH3	C6-N1	4.05	1.40	1.33
5	A	1425	GDP	C2-N1	4.99	1.44	1.35
5	A	1425	GDP	C6-N1	6.71	1.45	1.33

All (47) bond angle outliers are listed below:

Mol	Chain	Res	Type	Atoms	Z	Observed(°)	Ideal(°)
6	A	1291	CH1	O3G-PG-O1G	-8.78	82.32	110.58
7	A	1293	GH3	C5-C6-N1	-7.80	112.92	123.59
5	A	1425	GDP	C5-C6-N1	-6.99	114.03	123.59
4	A	1424	G7M	C5-C6-N1	-6.68	114.46	123.59
4	A	1424	G7M	OP2-P-O5'	-6.62	87.51	106.56
4	A	1424	G7M	OP2-P-OP1	-5.74	92.09	110.58
6	A	1291	CH1	O3G-PG-O3B	-5.28	81.15	105.09
6	A	1291	CH1	O3G-PG-O2G	-4.94	88.57	107.38
5	A	1425	GDP	C4'-O4'-C1'	-4.90	104.34	109.72
5	A	1425	GDP	O2A-PA-O3A	-4.54	84.49	105.09
4	A	1424	G7M	N3-C2-N1	-4.43	120.70	127.44
4	A	1424	G7M	C5'-C4'-C3'	-4.36	97.91	115.21
6	A	1291	CH1	C3'-C4'-C5'	-4.25	106.28	113.91
6	A	1291	CH1	PB-O3A-PA	-4.24	120.81	132.73
5	A	1425	GDP	N3-C2-N1	-4.13	121.16	127.44
5	A	1425	GDP	O2A-PA-O5'	-3.54	90.61	108.46
6	A	1291	CH1	C6-N1-C2	-3.29	115.96	121.28
7	A	1293	GH3	N3-C2-N1	-3.17	122.62	127.44
6	A	1291	CH1	PB-O3B-PG	-3.15	122.11	132.67
5	A	1425	GDP	C6-C5-C4	-2.55	117.84	120.90
4	A	1424	G7M	C4'-O4'-C1'	-2.52	106.95	109.72
4	A	1424	G7M	O5'-P-OP1	-2.39	101.06	107.14
4	A	1424	G7M	C6-C5-C4	-2.07	118.42	120.90
7	A	1293	GH3	O2G-PG-O3B	2.13	114.73	105.09
6	A	1291	CH1	O2A-PA-O3A	2.13	114.74	105.09
6	A	1291	CH1	O4'-C1'-N1	2.22	112.75	108.08
4	A	1424	G7M	N2-C2-N3	2.35	122.31	117.80

Continued on next page...

Continued from previous page...

Mol	Chain	Res	Type	Atoms	Z	Observed(°)	Ideal(°)
4	A	1424	G7M	C1'-N9-C4	2.48	130.68	126.94
5	A	1425	GDP	C2'-C1'-N9	2.52	118.14	114.29
6	A	1291	CH1	O2G-PG-O1G	2.52	118.70	110.58
5	A	1425	GDP	O2A-PA-O1A	2.72	127.26	112.53
5	A	1425	GDP	C4-C5-N7	2.92	112.16	109.48
6	A	1291	CH1	C2-N3-C4	3.52	120.58	115.61
6	A	1291	CH1	O4'-C4'-C5'	4.10	115.59	109.54
4	A	1424	G7M	O4'-C4'-C3'	4.71	114.65	105.15
5	A	1425	GDP	O5'-PA-O1A	4.95	128.84	109.62
4	A	1424	G7M	C2'-C1'-N9	5.46	122.63	114.29
7	A	1293	GH3	O4'-C4'-C5'	5.46	117.61	109.54
4	A	1424	G7M	O3'-C3'-C4'	5.86	128.63	111.05
5	A	1425	GDP	C6-N1-C2	5.86	124.08	115.94
7	A	1293	GH3	C6-N1-C2	5.94	124.19	115.94
4	A	1424	G7M	OP3-P-O5'	5.94	123.68	106.56
5	A	1425	GDP	O5'-C5'-C4'	6.31	132.38	109.12
4	A	1424	G7M	O4'-C4'-C5'	6.45	132.39	109.32
4	A	1424	G7M	OP2-P-OP3	6.49	132.11	107.38
5	A	1425	GDP	O3A-PA-O5'	6.63	120.54	102.94
4	A	1424	G7M	C6-N1-C2	6.85	125.45	115.94

There are no chirality outliers.

There are no torsion outliers.

There are no ring outliers.

1 monomer is involved in 2 short contacts:

Mol	Chain	Res	Type	Clashes	Symm-Clashes
5	A	1425	GDP	2	0

5.7 Other polymers

There are no such residues in this entry.

5.8 Polymer linkage issues

There are no chain breaks in this entry.

6 Fit of model and data

6.1 Protein, DNA and RNA chains

In the following table, the column labelled ‘#RSRZ> 2’ contains the number (and percentage) of RSRZ outliers, followed by percent RSRZ outliers for the chain as percentile scores relative to all X-ray entries and entries of similar resolution. The OWAB column contains the minimum, median, 95th percentile and maximum values of the occupancy-weighted average B-factor per residue. The column labelled ‘Q< 0.9’ lists the number of (and percentage) of residues with an average occupancy less than 0.9.

Mol	Chain	Analysed	<RSRZ>	#RSRZ>2	OWAB(Å ²)	Q<0.9
1	B	4/6 (66%)	0.10	0 100 100	21, 25, 49, 65	0
2	A	1264/1267 (99%)	-0.10	21 (1%) 73 63	6, 21, 43, 73	0
All	All	1268/1273 (99%)	-0.10	21 (1%) 73 63	6, 21, 43, 73	0

All (21) RSRZ outliers are listed below:

Mol	Chain	Res	Type	RSRZ
2	A	2	SER	6.9
2	A	857	GLY	4.7
2	A	856	ILE	4.4
2	A	633	VAL	4.3
2	A	859	SER	4.1
2	A	855	MET	3.9
2	A	745	ALA	3.7
2	A	1203	ASP	3.5
2	A	860	VAL	3.2
2	A	744	THR	3.2
2	A	858	GLU	3.2
2	A	961	ALA	2.8
2	A	755	ASN	2.4
2	A	1201	PRO	2.3
2	A	958	SER	2.2
2	A	213	GLY	2.1
2	A	484	PRO	2.1
2	A	964	ARG	2.1
2	A	636	ARG	2.0
2	A	854	THR	2.0
2	A	634	GLY	2.0

6.2 Non-standard residues in protein, DNA, RNA chains [i](#)

There are no non-standard protein/DNA/RNA residues in this entry.

6.3 Carbohydrates [i](#)

There are no carbohydrates in this entry.

6.4 Ligands [i](#)

In the following table, the Atoms column lists the number of modelled atoms in the group and the number defined in the chemical component dictionary. LLDF column lists the quality of electron density of the group with respect to its neighbouring residues in protein, DNA or RNA chains. The B-factors column lists the minimum, median, 95th percentile and maximum values of B factors of atoms in the group. The column labelled 'Q< 0.9' lists the number of atoms with occupancy less than 0.9.

Mol	Type	Chain	Res	Atoms	RSCC	RSR	LLDF	B-factors(Å ²)	Q<0.9
5	GDP	A	1425	27/28	0.73	0.38	2.89	93,97,102,103	0
6	CH1	A	1291	28/28	0.91	0.22	1.81	62,66,69,69	0
7	GH3	A	1293	31/31	0.82	0.25	1.25	77,83,90,91	0
4	G7M	A	1424	25/25	0.84	0.25	-0.36	41,52,80,87	0
3	MN	A	1301	1/1	0.97	0.06	-4.00	32,32,32,32	0
3	MN	A	1302	1/1	0.96	0.11	-	35,35,35,35	0

6.5 Other polymers [i](#)

There are no such residues in this entry.