



Full wwPDB X-ray Structure Validation Report ⓘ

Jan 31, 2016 – 09:01 PM GMT

PDB ID : 1N52
Title : Cap Binding Complex
Authors : Calero, G.; Wilson, K.; Ly, T.; Rios-Steiner, J.; Clardy, J.; Cerione, R.
Deposited on : 2002-11-04
Resolution : 2.11 Å(reported)

This is a Full wwPDB X-ray Structure Validation Report for a publicly released PDB entry.
We welcome your comments at validation@mail.wwpdb.org
A user guide is available at
<http://wwpdb.org/validation/2016/XrayValidationReportHelp>
with specific help available everywhere you see the ⓘ symbol.

The following versions of software and data (see [references ⓘ](#)) were used in the production of this report:

MolProbity : 4.02b-467
Mogul : 1.7 (RC4), CSD as536be (2015)
Xtriage (Phenix) : 1.9-1692
EDS : rb-20026688
Percentile statistics : 20151230.v01 (using entries in the PDB archive December 30th 2015)
Refmac : 5.8.0135
CCP4 : 6.5.0
Ideal geometry (proteins) : Engh & Huber (2001)
Ideal geometry (DNA, RNA) : Parkinson et al. (1996)
Validation Pipeline (wwPDB-VP) : trunk26865

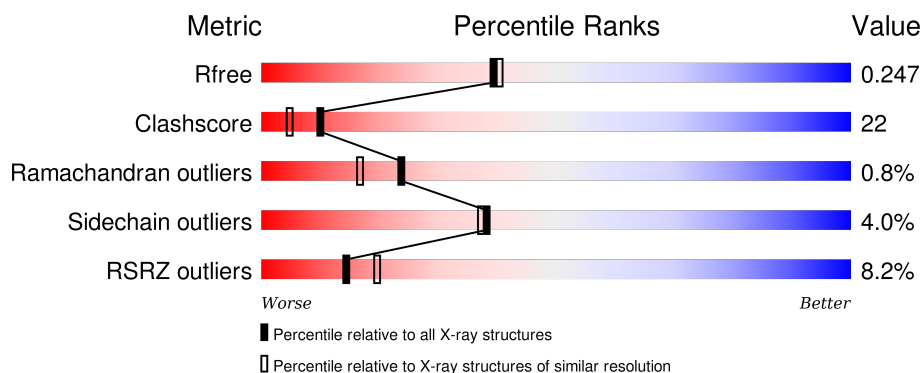
1 Overall quality at a glance

The following experimental techniques were used to determine the structure:

X-RAY DIFFRACTION

The reported resolution of this entry is 2.11 Å.

Percentile scores (ranging between 0-100) for global validation metrics of the entry are shown in the following graphic. The table shows the number of entries on which the scores are based.



Metric	Whole archive (#Entries)	Similar resolution (#Entries, resolution range(Å))
R_{free}	91344	4587 (2.14-2.10)
Clashscore	102246	5132 (2.14-2.10)
Ramachandran outliers	100387	5080 (2.14-2.10)
Sidechain outliers	100360	5081 (2.14-2.10)
RSRZ outliers	91569	4597 (2.14-2.10)

The table below summarises the geometric issues observed across the polymeric chains and their fit to the electron density. The red, orange, yellow and green segments on the lower bar indicate the fraction of residues that contain outliers for ≥ 3 , 2, 1 and 0 types of geometric quality criteria. A grey segment represents the fraction of residues that are not modelled. The numeric value for each fraction is indicated below the corresponding segment, with a dot representing fractions $\leq 5\%$. The upper red bar (where present) indicates the fraction of residues that have poor fit to the electron density. The numeric value is given above the bar.

Mol	Chain	Length	Quality of chain
1	A	790	
2	B	156	

The following table lists non-polymeric compounds, carbohydrate monomers and non-standard residues in protein, DNA, RNA chains that are outliers for geometric or electron-density-fit criteria:

Mol	Type	Chain	Res	Chirality	Geometry	Clashes	Electron density
5	PG4	A	3000	-	-	X	X
6	GOL	A	1555	-	X	-	X
6	GOL	A	1556	-	X	-	X
6	GOL	A	1557	-	X	-	-
6	GOL	A	1560	-	X	-	-
6	GOL	A	1561	-	X	-	X
6	GOL	A	1564	-	X	-	X
6	GOL	A	1565	-	X	-	-
6	GOL	A	1566	-	X	-	X
6	GOL	A	1569	-	X	-	X
6	GOL	A	1572	-	X	-	X
6	GOL	A	1573	-	X	-	-
6	GOL	B	1558	-	X	-	X
6	GOL	B	1568	-	X	-	-
6	GOL	B	1570	-	X	-	X
6	GOL	B	1571	-	X	X	-
6	GOL	B	1574	-	X	X	-

2 Entry composition [i](#)

There are 7 unique types of molecules in this entry. The entry contains 7699 atoms, of which 0 are hydrogens and 0 are deuteriums.

In the tables below, the ZeroOcc column contains the number of atoms modelled with zero occupancy, the AltConf column contains the number of residues with at least one atom in alternate conformation and the Trace column contains the number of residues modelled with at most 2 atoms.

- Molecule 1 is a protein called 80 kDa nuclear cap binding protein.

Mol	Chain	Residues	Atoms					ZeroOcc	AltConf	Trace
1	A	732	Total	C	N	O	S	0	0	0
			5991	3863	1008	1082	38			

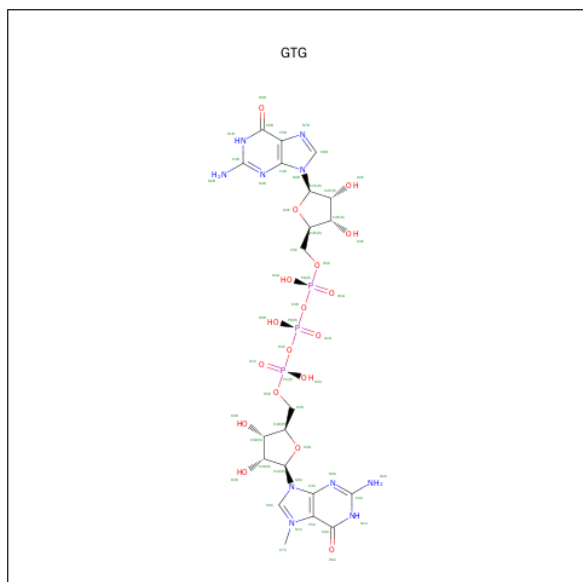
- Molecule 2 is a protein called 20 kDa nuclear cap binding protein.

Mol	Chain	Residues	Atoms					ZeroOcc	AltConf	Trace
2	B	148	Total	C	N	O	S	0	0	0
			1208	752	216	234	6			

- Molecule 3 is MAGNESIUM ION (three-letter code: MG) (formula: Mg).

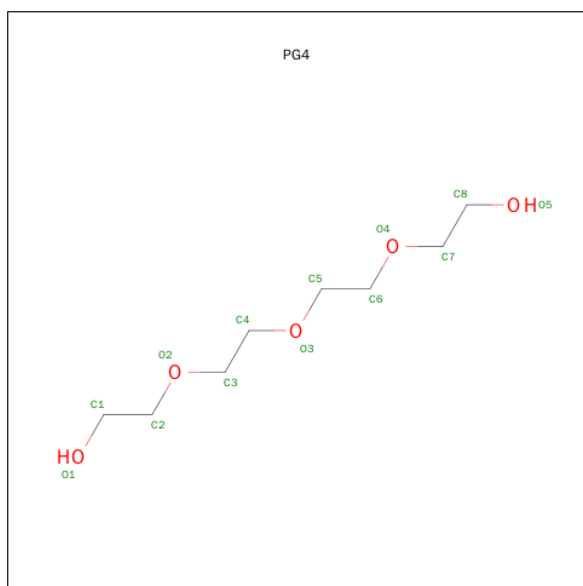
Mol	Chain	Residues	Atoms		ZeroOcc	AltConf
3	A	1	Total	Mg	0	0
			1	1		

- Molecule 4 is 7-METHYL-GUANOSINE-5'-TRIPHOSPHATE-5'-GUANOSINE (three-letter code: GTG) (formula: C₂₁H₃₀N₁₀O₁₈P₃).



Mol	Chain	Residues	Atoms				ZeroOcc	AltConf
4	B	1	Total	C	N	O	P	
			52	21	10	18	3	
								0
								0

- Molecule 5 is TETRAETHYLENE GLYCOL (three-letter code: PG4) (formula: $C_8H_{18}O_5$).



Mol	Chain	Residues	Atoms		ZeroOcc	AltConf
5	A	1	Total	C O		
			13	8 5	0	0

- Molecule 6 is GLYCEROL (three-letter code: GOL) (formula: $C_3H_8O_3$).



Mol	Chain	Residues	Atoms	ZeroOcc	AltConf
6	A	1	Total C O 6 3 3	0	0
6	A	1	Total C O 6 3 3	0	0
6	A	1	Total C O 6 3 3	0	0
6	B	1	Total C O 6 3 3	0	0
6	A	1	Total C O 6 3 3	0	0
6	A	1	Total C O 6 3 3	0	0
6	A	1	Total C O 6 3 3	0	0
6	A	1	Total C O 6 3 3	0	0
6	A	1	Total C O 6 3 3	0	0
6	B	1	Total C O 6 3 3	0	0
6	A	1	Total C O 6 3 3	0	0
6	B	1	Total C O 6 3 3	0	0
6	B	1	Total C O 6 3 3	0	0
6	A	1	Total C O 6 3 3	0	0
6	A	1	Total C O 6 3 3	0	0
6	B	1	Total C O 6 3 3	0	0

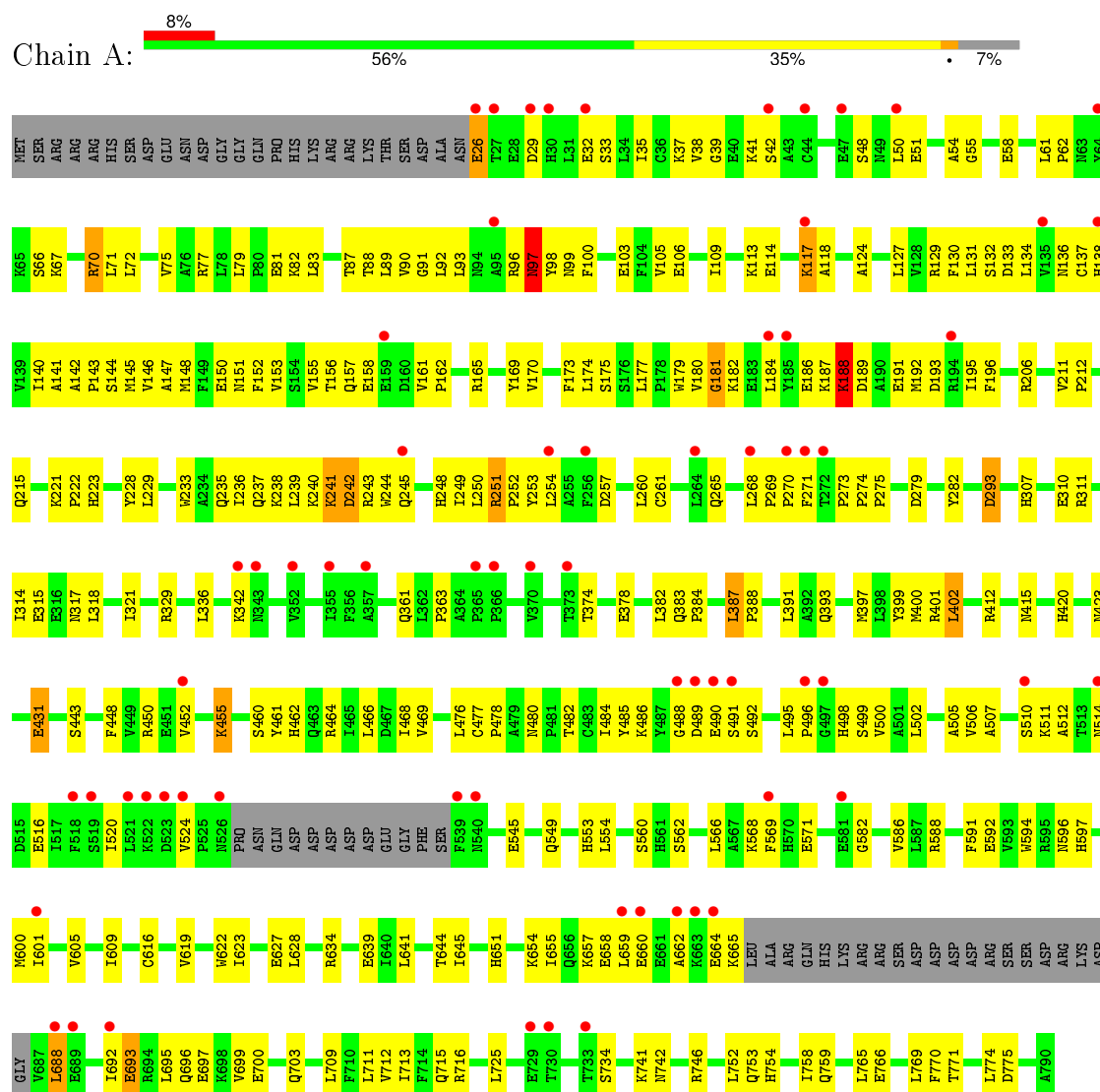
- Molecule 7 is water.

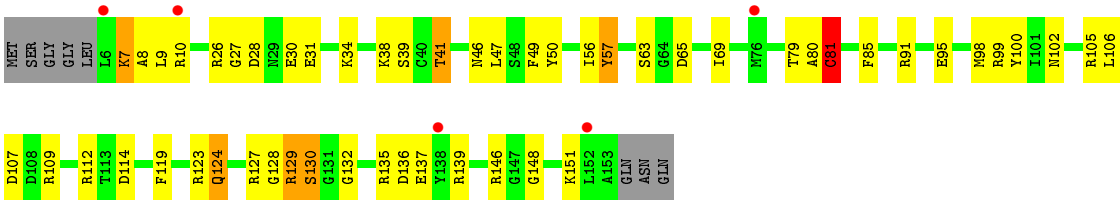
Mol	Chain	Residues	Atoms	ZeroOcc	AltConf
7	A	254	Total O 254 254	0	0
7	B	84	Total O 84 84	0	0

3 Residue-property plots

These plots are drawn for all protein, RNA and DNA chains in the entry. The first graphic for a chain summarises the proportions of errors displayed in the second graphic. The second graphic shows the sequence view annotated by issues in geometry and electron density. Residues are color-coded according to the number of geometric quality criteria for which they contain at least one outlier: green = 0, yellow = 1, orange = 2 and red = 3 or more. A red dot above a residue indicates a poor fit to the electron density ($RSRZ > 2$). Stretches of 2 or more consecutive residues without any outlier are shown as a green connector. Residues present in the sample, but not in the model, are shown in grey.

- Molecule 1: 80 kDa nuclear cap binding protein





4 Data and refinement statistics

Property	Value	Source
Space group	P 32 2 1	Depositor
Cell constants a, b, c, α , β , γ	111.68Å 111.68Å 177.59Å 90.00° 90.00° 120.00°	Depositor
Resolution (Å)	24.54 – 2.11 37.45 – 2.00	Depositor EDS
% Data completeness (in resolution range)	55.6 (24.54-2.11) 89.4 (37.45-2.00)	Depositor EDS
R_{merge}	0.33	Depositor
R_{sym}	0.07	Depositor
$\langle I/\sigma(I) \rangle$ ¹	1.31 (at 2.00Å)	Xtriage
Refinement program	CNS 1.0	Depositor
R, R_{free}	0.223 , 0.246 0.225 , 0.247	Depositor DCC
R_{free} test set	2271 reflections (5.35%)	DCC
Wilson B-factor (Å ²)	37.2	Xtriage
Anisotropy	0.215	Xtriage
Bulk solvent k_{sol} (e/Å ³), B_{sol} (Å ²)	0.35 , 48.6	EDS
Estimated twinning fraction	0.015 for -h,-k,l	Xtriage
L-test for twinning ²	$\langle L \rangle = 0.49$, $\langle L^2 \rangle = 0.32$	Xtriage
Outliers	0 of 132884 reflections	Xtriage
F_o, F_c correlation	0.94	EDS
Total number of atoms	7699	wwPDB-VP
Average B, all atoms (Å ²)	49.0	wwPDB-VP

Xtriage's analysis on translational NCS is as follows: *The largest off-origin peak in the Patterson function is 4.66% of the height of the origin peak. No significant pseudotranslation is detected.*

¹Intensities estimated from amplitudes.

²Theoretical values of $\langle |L| \rangle$, $\langle L^2 \rangle$ for acentric reflections are 0.5, 0.375 respectively for untwinned datasets, and 0.333, 0.2 for perfectly twinned datasets.

5 Model quality [i](#)

5.1 Standard geometry [i](#)

Bond lengths and bond angles in the following residue types are not validated in this section: GOL, PG4, MG, GTG

The Z score for a bond length (or angle) is the number of standard deviations the observed value is removed from the expected value. A bond length (or angle) with $|Z| > 5$ is considered an outlier worth inspection. RMSZ is the root-mean-square of all Z scores of the bond lengths (or angles).

Mol	Chain	Bond lengths		Bond angles	
		RMSZ	$\# Z > 5$	RMSZ	$\# Z > 5$
1	A	0.38	0/6143	0.58	0/8335
2	B	0.46	1/1228 (0.1%)	0.70	0/1638
All	All	0.40	1/7371 (0.0%)	0.60	0/9973

All (1) bond length outliers are listed below:

Mol	Chain	Res	Type	Atoms	Z	Observed(Å)	Ideal(Å)
2	B	81	CYS	CB-SG	-5.62	1.72	1.81

There are no bond angle outliers.

There are no chirality outliers.

There are no planarity outliers.

5.2 Too-close contacts [i](#)

In the following table, the Non-H and H(model) columns list the number of non-hydrogen atoms and hydrogen atoms in the chain respectively. The H(added) column lists the number of hydrogen atoms added and optimized by MolProbity. The Clashes column lists the number of clashes within the asymmetric unit, whereas Symm-Clashes lists symmetry related clashes.

Mol	Chain	Non-H	H(model)	H(added)	Clashes	Symm-Clashes
1	A	5991	0	5976	259	0
2	B	1208	0	1165	62	0
3	A	1	0	0	0	0
4	B	52	0	26	3	0
5	A	13	0	17	7	0
6	A	66	0	44	6	0
6	B	30	0	20	13	0
7	A	254	0	0	23	0

Continued on next page...

Continued from previous page...

Mol	Chain	Non-H	H(model)	H(added)	Clashes	Symm-Clashes
7	B	84	0	0	3	0
All	All	7699	0	7248	321	0

The all-atom clashscore is defined as the number of clashes found per 1000 atoms (including hydrogen atoms). The all-atom clashscore for this structure is 22.

All (321) close contacts within the same asymmetric unit are listed below, sorted by their clash magnitude.

Atom-1	Atom-2	Interatomic distance (Å)	Clash overlap (Å)
2:B:80:ALA:H	6:B:1571:GOL:H11	1.15	1.03
1:A:188:LYS:HA	1:A:188:LYS:NZ	1.77	0.98
1:A:180:VAL:HA	7:A:6172:HOH:O	1.64	0.98
1:A:235:GLN:HA	7:A:6164:HOH:O	1.62	0.97
1:A:180:VAL:HG22	1:A:184:LEU:HB2	1.48	0.96
2:B:80:ALA:H	6:B:1571:GOL:C1	1.81	0.93
1:A:238:LYS:HG3	1:A:241:LYS:HZ1	1.31	0.93
1:A:238:LYS:HG3	1:A:241:LYS:NZ	1.85	0.91
2:B:7:LYS:HA	2:B:7:LYS:HE3	1.56	0.86
2:B:27:GLY:CA	2:B:31:GLU:OE1	2.24	0.85
2:B:129:ARG:HD3	2:B:129:ARG:H	1.40	0.85
1:A:140:ILE:HD13	1:A:268:LEU:HD21	1.57	0.84
1:A:188:LYS:HA	1:A:188:LYS:HZ3	1.42	0.84
1:A:363:PRO:HB3	1:A:752:LEU:HD22	1.58	0.83
1:A:146:VAL:O	1:A:150:GLU:HG3	1.81	0.81
2:B:129:ARG:CD	2:B:129:ARG:H	1.89	0.79
2:B:129:ARG:HG2	2:B:137:GLU:HG3	1.65	0.79
1:A:93:LEU:HD23	1:A:100:PHE:HE2	1.47	0.79
1:A:136:ASN:ND2	7:A:6172:HOH:O	2.14	0.77
2:B:80:ALA:N	6:B:1571:GOL:H11	1.97	0.77
2:B:10:ARG:HH11	2:B:10:ARG:HB2	1.47	0.77
1:A:187:LYS:HD2	1:A:188:LYS:H	1.50	0.76
2:B:119:PHE:HE1	2:B:124:GLN:HG3	1.51	0.76
1:A:238:LYS:HA	1:A:241:LYS:HD2	1.67	0.76
1:A:431:GLU:CD	1:A:431:GLU:H	1.89	0.76
2:B:27:GLY:HA3	2:B:31:GLU:OE1	1.85	0.76
2:B:135:ARG:HD2	6:B:1570:GOL:H11	1.67	0.76
1:A:484:ILE:HD11	1:A:596:ASN:ND2	2.02	0.75
1:A:665:LYS:HB3	1:A:688:LEU:HD21	1.69	0.75
2:B:129:ARG:HH22	6:B:1574:GOL:H12	1.53	0.74
1:A:99:ASN:O	1:A:103:GLU:HG3	1.87	0.74
2:B:129:ARG:CD	2:B:129:ARG:N	2.50	0.74

Continued on next page...

Continued from previous page...

Atom-1	Atom-2	Interatomic distance (Å)	Clash overlap (Å)
1:A:114:GLU:O	1:A:117:LYS:HG3	1.87	0.73
2:B:107:ASP:OD2	6:B:1568:GOL:H11	1.89	0.73
2:B:10:ARG:NH1	2:B:10:ARG:HB2	2.04	0.72
2:B:119:PHE:CE1	2:B:124:GLN:HG3	2.24	0.72
1:A:243:ARG:HB2	1:A:245:GLN:HE21	1.53	0.72
1:A:374:THR:HG21	2:B:100:TYR:O	1.90	0.71
1:A:502:LEU:O	1:A:506:VAL:HG23	1.91	0.71
2:B:98:MET:HE1	2:B:114:ASP:HA	1.72	0.71
1:A:665:LYS:CB	1:A:688:LEU:HD21	2.20	0.70
1:A:188:LYS:HA	1:A:188:LYS:HZ2	1.55	0.69
1:A:716:ARG:HH11	1:A:716:ARG:HA	1.55	0.69
1:A:195:ILE:HB	7:A:6247:HOH:O	1.92	0.69
1:A:400:MET:HE3	7:A:6165:HOH:O	1.92	0.69
1:A:415:ASN:HD21	1:A:455:LYS:NZ	1.91	0.69
2:B:46:ASN:O	2:B:109:ARG:HD3	1.93	0.69
1:A:616:CYS:HB3	7:A:6006:HOH:O	1.92	0.68
1:A:117:LYS:HE2	1:A:118:ALA:HB2	1.76	0.68
1:A:696:GLN:O	1:A:700:GLU:HG2	1.94	0.67
1:A:29:ASP:O	1:A:32:GLU:HG2	1.94	0.67
2:B:57:TYR:CD2	2:B:69:ILE:HD12	2.30	0.67
2:B:130:SER:OG	2:B:151:LYS:HG2	1.95	0.66
1:A:109:ILE:O	1:A:113:LYS:HG3	1.95	0.66
1:A:32:GLU:HB2	2:B:7:LYS:HD2	1.78	0.65
1:A:754:HIS:O	1:A:758:ILE:HG13	1.96	0.65
1:A:554:LEU:HB3	6:A:1564:GOL:H11	1.76	0.65
1:A:484:ILE:HD11	1:A:596:ASN:HD21	1.59	0.65
2:B:26:ARG:HG2	7:B:2192:HOH:O	1.97	0.65
1:A:93:LEU:HD23	1:A:100:PHE:CE2	2.30	0.65
2:B:41:THR:HG22	7:B:2197:HOH:O	1.97	0.65
2:B:129:ARG:NH2	6:B:1574:GOL:H12	2.11	0.64
1:A:488:GLY:C	1:A:490:GLU:H	2.00	0.64
1:A:138:HIS:HB3	1:A:265:GLN:NE2	2.12	0.64
1:A:490:GLU:HG2	1:A:492:SER:HB2	1.80	0.64
1:A:77:ARG:HB3	1:A:127:LEU:HD21	1.80	0.64
1:A:191:GLU:O	1:A:195:ILE:HG12	1.97	0.64
1:A:654:LYS:O	1:A:657:LYS:HG2	1.98	0.63
1:A:153:VAL:HG21	1:A:195:ILE:HG23	1.79	0.63
2:B:26:ARG:HH11	2:B:26:ARG:HG3	1.62	0.63
1:A:97:ASN:C	1:A:97:ASN:HD22	2.02	0.63
1:A:307:HIS:O	7:A:6164:HOH:O	2.16	0.63
1:A:152:PHE:O	1:A:155:VAL:HG23	1.99	0.63

Continued on next page...

Continued from previous page...

Atom-1	Atom-2	Interatomic distance (Å)	Clash overlap (Å)
1:A:83:LEU:HD11	1:A:130:PHE:HA	1.80	0.62
1:A:67:LYS:HE3	1:A:71:LEU:HD21	1.82	0.62
2:B:27:GLY:HA2	2:B:31:GLU:OE1	2.00	0.62
1:A:26:GLU:O	1:A:29:ASP:HB3	2.00	0.61
2:B:47:LEU:HD22	2:B:106:LEU:HD23	1.81	0.61
1:A:141:ALA:HB3	1:A:144:SER:HB2	1.81	0.61
1:A:657:LYS:O	1:A:660:GLU:HB3	2.01	0.61
1:A:420:HIS:NE2	5:A:3000:PG4:H51	2.16	0.61
1:A:33:SER:O	1:A:37:LYS:HD3	2.01	0.61
1:A:105:VAL:O	1:A:109:ILE:HG12	2.00	0.60
1:A:448:PHE:O	1:A:452:VAL:HG23	2.01	0.60
1:A:634:ARG:HH21	1:A:634:ARG:HG2	1.64	0.60
1:A:399:TYR:HA	1:A:402:LEU:HD22	1.84	0.60
2:B:91:ARG:O	2:B:95:GLU:HG3	2.02	0.60
1:A:310:GLU:O	1:A:314:ILE:HG13	2.03	0.59
1:A:514:ASN:ND2	1:A:571:GLU:HB3	2.17	0.59
2:B:129:ARG:HH21	6:B:1574:GOL:C3	2.16	0.59
1:A:420:HIS:CE1	5:A:3000:PG4:H42	2.37	0.59
1:A:145:MET:HE3	1:A:145:MET:HA	1.83	0.59
1:A:146:VAL:HG23	1:A:184:LEU:HD11	1.85	0.59
1:A:48:SER:O	1:A:51:GLU:HB3	2.02	0.59
1:A:129:ARG:HD3	1:A:179:TRP:CZ3	2.37	0.59
2:B:28:ASP:N	2:B:31:GLU:OE1	2.36	0.58
1:A:490:GLU:C	1:A:492:SER:H	2.07	0.58
1:A:662:ALA:O	1:A:692:ILE:HD11	2.03	0.58
5:A:3000:PG4:O1	7:A:6002:HOH:O	2.14	0.58
1:A:582:GLY:O	1:A:586:VAL:HG23	2.03	0.58
1:A:490:GLU:CG	1:A:492:SER:HB2	2.32	0.58
1:A:415:ASN:HD21	1:A:455:LYS:HZ2	1.52	0.58
1:A:138:HIS:HB3	1:A:265:GLN:HE21	1.68	0.58
1:A:150:GLU:HG2	1:A:195:ILE:HD11	1.85	0.58
1:A:187:LYS:CD	1:A:188:LYS:H	2.17	0.58
1:A:485:TYR:HB2	1:A:553:HIS:CD2	2.39	0.58
2:B:10:ARG:CB	2:B:10:ARG:HH11	2.15	0.57
1:A:180:VAL:HG23	7:A:6172:HOH:O	2.03	0.57
1:A:142:ALA:HB3	1:A:143:PRO:HD3	1.87	0.57
1:A:498:HIS:CD2	1:A:502:LEU:HD11	2.39	0.57
1:A:387:LEU:HB3	1:A:388:PRO:HD3	1.86	0.57
1:A:466:LEU:HD23	1:A:477:CYS:SG	2.45	0.57
1:A:709:LEU:O	1:A:713:ILE:HG13	2.05	0.56
1:A:609:ILE:CD1	1:A:644:THR:HG23	2.35	0.56

Continued on next page...

Continued from previous page...

Atom-1	Atom-2	Interatomic distance (Å)	Clash overlap (Å)
1:A:317:ASN:O	1:A:321:ILE:HG13	2.04	0.56
1:A:393:GLN:O	1:A:397:MET:HG3	2.06	0.56
6:A:1572:GOL:O2	7:A:6014:HOH:O	2.17	0.56
2:B:129:ARG:N	2:B:129:ARG:HD3	2.13	0.56
2:B:46:ASN:HA	2:B:135:ARG:HH12	1.71	0.56
1:A:41:LYS:O	1:A:41:LYS:HG3	2.05	0.56
1:A:211:VAL:O	1:A:215:GLN:HG3	2.06	0.56
1:A:759:GLN:HG2	6:A:1569:GOL:O2	2.06	0.56
1:A:659:LEU:HA	1:A:695:LEU:HD13	1.89	0.55
1:A:490:GLU:OE1	1:A:495:LEU:HD12	2.06	0.55
1:A:188:LYS:HE3	1:A:191:GLU:OE1	2.06	0.55
1:A:250:LEU:HD21	1:A:342:LYS:HA	1.89	0.55
1:A:609:ILE:HD11	1:A:619:VAL:HG21	1.87	0.55
1:A:147:ALA:O	1:A:151:ASN:ND2	2.39	0.55
1:A:153:VAL:HG21	1:A:195:ILE:CG2	2.37	0.54
2:B:129:ARG:NH2	6:B:1574:GOL:C3	2.70	0.54
1:A:151:ASN:ND2	7:A:6064:HOH:O	2.39	0.54
2:B:136:ASP:OD1	2:B:139:ARG:HD3	2.07	0.54
1:A:137:CYS:O	1:A:260:LEU:HD22	2.07	0.54
1:A:510:SER:O	1:A:511:LYS:HB2	2.06	0.54
1:A:153:VAL:O	1:A:156:THR:HG23	2.08	0.53
1:A:155:VAL:HG21	1:A:169:TYR:CD2	2.43	0.53
1:A:243:ARG:HB2	1:A:245:GLN:NE2	2.22	0.53
1:A:248:HIS:O	1:A:342:LYS:HE3	2.09	0.53
1:A:252:PRO:C	1:A:254:LEU:H	2.12	0.53
1:A:391:LEU:HG	5:A:3000:PG4:H52	1.91	0.53
1:A:480:ASN:HD22	1:A:482:THR:HG23	1.72	0.53
1:A:248:HIS:O	1:A:342:LYS:HB2	2.09	0.53
1:A:498:HIS:O	1:A:502:LEU:HG	2.09	0.52
1:A:92:LEU:H	1:A:92:LEU:CD2	2.22	0.52
2:B:50:TYR:HB2	6:B:1568:GOL:O1	2.09	0.52
1:A:488:GLY:C	1:A:490:GLU:N	2.62	0.52
1:A:486:LYS:O	1:A:490:GLU:CD	2.47	0.52
1:A:233:TRP:O	1:A:237:GLN:HG2	2.09	0.52
2:B:135:ARG:O	2:B:139:ARG:HG3	2.08	0.52
1:A:187:LYS:HG3	1:A:188:LYS:N	2.25	0.52
1:A:92:LEU:H	1:A:92:LEU:HD22	1.74	0.52
1:A:480:ASN:ND2	1:A:482:THR:HG23	2.24	0.52
1:A:38:VAL:HG23	1:A:39:GLY:N	2.25	0.52
1:A:269:PRO:HG3	7:A:6180:HOH:O	2.10	0.52
1:A:741:LYS:HE2	7:A:6049:HOH:O	2.10	0.52

Continued on next page...

Continued from previous page...

Atom-1	Atom-2	Interatomic distance (Å)	Clash overlap (Å)
1:A:238:LYS:HG3	1:A:241:LYS:HZ2	1.73	0.51
1:A:712:VAL:O	1:A:716:ARG:HG2	2.09	0.51
1:A:141:ALA:O	1:A:144:SER:N	2.43	0.51
1:A:420:HIS:CD2	5:A:3000:PG4:H71	2.46	0.51
1:A:693:GLU:O	1:A:697:GLU:HG3	2.09	0.51
1:A:238:LYS:HB3	7:A:6164:HOH:O	2.11	0.51
2:B:39:SER:O	2:B:91:ARG:HG3	2.10	0.51
1:A:619:VAL:O	1:A:623:ILE:HG12	2.11	0.51
1:A:173:PHE:CE1	1:A:177:LEU:HD21	2.46	0.51
1:A:741:LYS:NZ	7:A:6227:HOH:O	2.45	0.50
2:B:49:PHE:HE1	2:B:81:CYS:O	1.94	0.50
1:A:766:GLU:HG2	7:A:6130:HOH:O	2.11	0.50
1:A:88:THR:HG22	1:A:92:LEU:CD2	2.41	0.50
1:A:187:LYS:CG	1:A:188:LYS:N	2.74	0.50
1:A:657:LYS:HG3	1:A:658:GLU:N	2.24	0.50
1:A:609:ILE:HD13	1:A:644:THR:HG23	1.93	0.50
1:A:588:ARG:O	1:A:592:GLU:HG2	2.11	0.50
1:A:588:ARG:HD3	1:A:627:GLU:OE1	2.11	0.50
1:A:488:GLY:O	1:A:490:GLU:N	2.27	0.50
1:A:51:GLU:O	1:A:54:ALA:HB3	2.10	0.50
1:A:711:LEU:O	1:A:715:GLN:HG3	2.11	0.50
1:A:92:LEU:N	1:A:92:LEU:HD22	2.27	0.50
1:A:591:PHE:HB2	1:A:622:TRP:HZ2	1.75	0.50
2:B:26:ARG:HG3	2:B:26:ARG:NH1	2.26	0.50
1:A:382:LEU:C	1:A:384:PRO:HD3	2.31	0.50
1:A:177:LEU:HA	1:A:181:GLY:H	1.77	0.49
1:A:468:ILE:HG13	1:A:469:VAL:N	2.26	0.49
1:A:420:HIS:NE2	5:A:3000:PG4:H42	2.27	0.49
1:A:657:LYS:CG	1:A:658:GLU:N	2.74	0.49
1:A:270:PRO:HA	7:A:6166:HOH:O	2.12	0.49
1:A:211:VAL:HB	1:A:212:PRO:HD3	1.93	0.49
1:A:206:ARG:CZ	1:A:229:LEU:HD12	2.42	0.49
1:A:88:THR:HG22	1:A:92:LEU:HD21	1.94	0.49
2:B:123:ARG:NH1	2:B:123:ARG:HB3	2.27	0.48
1:A:480:ASN:HD22	1:A:482:THR:CG2	2.26	0.48
1:A:311:ARG:O	1:A:315:GLU:HG3	2.13	0.48
1:A:742:ASN:O	1:A:746:ARG:HG2	2.13	0.48
2:B:139:ARG:NH2	2:B:148:GLY:O	2.44	0.48
1:A:490:GLU:HG2	1:A:492:SER:O	2.13	0.48
1:A:161:VAL:HB	1:A:165:ARG:HD3	1.94	0.48
1:A:129:ARG:NH2	1:A:175:SER:HB2	2.29	0.48

Continued on next page...

Continued from previous page...

Atom-1	Atom-2	Interatomic distance (Å)	Clash overlap (Å)
1:A:641:LEU:O	1:A:645:ILE:HG13	2.14	0.48
1:A:251:ARG:HD3	1:A:253:TYR:OH	2.13	0.48
1:A:188:LYS:O	1:A:192:MET:HB2	2.14	0.48
1:A:129:ARG:HH21	1:A:175:SER:HB2	1.78	0.48
1:A:187:LYS:CG	1:A:188:LYS:H	2.27	0.47
1:A:742:ASN:HB2	7:A:6152:HOH:O	2.13	0.47
1:A:136:ASN:N	1:A:136:ASN:HD22	2.11	0.47
1:A:191:GLU:C	1:A:193:ASP:H	2.15	0.47
1:A:72:LEU:HA	1:A:75:VAL:HG22	1.96	0.47
1:A:651:HIS:CE1	1:A:655:ILE:HD11	2.49	0.47
1:A:665:LYS:HB2	1:A:688:LEU:HD21	1.93	0.47
1:A:257:ASP:O	1:A:261:CYS:HB2	2.14	0.47
1:A:699:VAL:HG12	1:A:703:GLN:HE21	1.79	0.47
1:A:196:PHE:HZ	1:A:244:TRP:HH2	1.63	0.47
1:A:192:MET:C	7:A:6247:HOH:O	2.53	0.47
2:B:49:PHE:CE1	2:B:81:CYS:O	2.67	0.47
1:A:195:ILE:N	7:A:6247:HOH:O	2.46	0.47
1:A:206:ARG:NH1	1:A:229:LEU:HB2	2.30	0.47
1:A:170:VAL:HG12	1:A:174:LEU:HD13	1.97	0.47
1:A:423:ASN:HA	2:B:105:ARG:HG3	1.97	0.46
1:A:753:GLN:CG	7:A:6117:HOH:O	2.62	0.46
1:A:490:GLU:O	1:A:491:SER:HB2	2.15	0.46
1:A:516:GLU:O	1:A:520:ILE:HG12	2.15	0.46
1:A:329:ARG:HG3	1:A:378:GLU:HG3	1.97	0.46
1:A:660:GLU:O	1:A:664:GLU:HG2	2.15	0.46
1:A:634:ARG:HG2	1:A:634:ARG:NH2	2.30	0.46
1:A:639:GLU:HG3	6:A:1556:GOL:C3	2.45	0.46
2:B:123:ARG:HH11	2:B:123:ARG:HB3	1.80	0.46
1:A:89:LEU:O	1:A:93:LEU:HD13	2.16	0.46
1:A:765:LEU:HD23	1:A:769:LEU:HD12	1.98	0.46
1:A:753:GLN:HG3	7:A:6117:HOH:O	2.15	0.46
1:A:61:LEU:N	1:A:62:PRO:CD	2.79	0.46
1:A:499:SER:HA	1:A:502:LEU:HD12	1.98	0.46
1:A:50:LEU:O	1:A:54:ALA:HB2	2.16	0.45
1:A:238:LYS:O	1:A:242:ASP:HB2	2.15	0.45
1:A:66:SER:C	1:A:70:ARG:HE	2.20	0.45
1:A:254:LEU:HD23	1:A:254:LEU:C	2.37	0.45
1:A:725:LEU:HD13	1:A:775:ASP:CG	2.36	0.45
1:A:90:VAL:HG12	1:A:90:VAL:O	2.16	0.45
1:A:182:LYS:HA	1:A:244:TRP:CB	2.46	0.45
2:B:79:THR:HA	6:B:1571:GOL:H12	1.97	0.45

Continued on next page...

Continued from previous page...

Atom-1	Atom-2	Interatomic distance (Å)	Clash overlap (Å)
2:B:146:ARG:NH2	6:B:1570:GOL:O3	2.50	0.45
1:A:148:MET:HG3	1:A:271:PHE:HB3	1.99	0.45
1:A:478:PRO:HA	6:A:1572:GOL:O1	2.17	0.45
1:A:450:ARG:HG2	6:A:1572:GOL:C3	2.47	0.45
1:A:88:THR:CG2	1:A:92:LEU:HD21	2.47	0.45
1:A:131:LEU:O	1:A:134:LEU:HB2	2.17	0.45
1:A:81:GLU:HG2	1:A:82:LYS:HD2	1.98	0.45
1:A:274:PRO:HA	1:A:275:PRO:HD3	1.86	0.45
1:A:486:LYS:O	1:A:490:GLU:OE1	2.35	0.45
1:A:273:PRO:HA	1:A:274:PRO:HD3	1.88	0.45
1:A:490:GLU:C	1:A:492:SER:N	2.70	0.44
1:A:507:ALA:HB1	1:A:512:ALA:HB2	1.99	0.44
1:A:771:THR:O	1:A:774:LEU:HB2	2.16	0.44
1:A:26:GLU:O	1:A:29:ASP:N	2.51	0.44
2:B:136:ASP:HA	2:B:139:ARG:HD3	1.98	0.44
1:A:500:VAL:HG11	1:A:524:VAL:CG2	2.48	0.44
1:A:601:ILE:O	1:A:605:VAL:HG23	2.17	0.44
1:A:399:TYR:O	1:A:402:LEU:HB2	2.17	0.44
1:A:485:TYR:HB2	1:A:553:HIS:HD2	1.81	0.44
1:A:248:HIS:C	1:A:342:LYS:HE3	2.38	0.44
1:A:79:LEU:HA	1:A:79:LEU:HD23	1.79	0.44
1:A:415:ASN:HD21	1:A:455:LYS:HZ3	1.64	0.44
2:B:95:GLU:O	2:B:99:ARG:HG3	2.18	0.44
1:A:568:LYS:HD3	1:A:569:PHE:CE1	2.52	0.44
1:A:594:TRP:CD2	1:A:600:MET:HG2	2.53	0.44
1:A:500:VAL:HG11	1:A:524:VAL:HG22	1.98	0.44
1:A:443:SER:HB3	7:A:6016:HOH:O	2.17	0.44
1:A:450:ARG:HG3	1:A:476:LEU:O	2.17	0.43
2:B:38:LYS:HG2	2:B:38:LYS:O	2.18	0.43
1:A:143:PRO:HG3	1:A:187:LYS:HG2	2.00	0.43
1:A:162:PRO:O	1:A:165:ARG:HB3	2.19	0.43
1:A:87:THR:HG21	1:A:133:ASP:HB3	2.00	0.43
1:A:223:HIS:HE1	1:A:293:ASP:HB3	1.84	0.43
1:A:651:HIS:NE2	1:A:655:ILE:HD11	2.34	0.43
1:A:165:ARG:HD2	1:A:282:TYR:OH	2.19	0.43
4:B:2137:GTG:N7B	6:B:1574:GOL:C3	2.82	0.42
1:A:397:MET:HE3	1:A:401:ARG:NH2	2.32	0.42
1:A:770:PHE:HA	1:A:774:LEU:HD22	2.01	0.42
2:B:123:ARG:NH1	4:B:2137:GTG:O3D	2.52	0.42
1:A:103:GLU:O	1:A:106:GLU:HB2	2.19	0.42
1:A:659:LEU:HD21	1:A:696:GLN:HE22	1.84	0.42

Continued on next page...

Continued from previous page...

Atom-1	Atom-2	Interatomic distance (Å)	Clash overlap (Å)
1:A:361:GLN:O	1:A:412:ARG:NH1	2.51	0.42
1:A:134:LEU:HD12	1:A:140:ILE:HD11	2.02	0.42
1:A:124:ALA:O	1:A:127:LEU:N	2.50	0.42
1:A:623:ILE:HA	1:A:628:LEU:HD12	2.02	0.42
2:B:30:GLU:OE1	2:B:34:LYS:HE3	2.19	0.42
2:B:128:GLY:HA3	2:B:132:GLY:O	2.19	0.42
2:B:85:PHE:HZ	2:B:123:ARG:HH12	1.67	0.42
1:A:505:ALA:HA	1:A:554:LEU:HD11	2.01	0.42
1:A:495:LEU:HA	1:A:496:PRO:HD3	1.85	0.42
1:A:32:GLU:HA	1:A:71:LEU:HD13	2.01	0.42
1:A:55:GLY:O	1:A:58:GLU:N	2.53	0.42
1:A:221:LYS:HA	1:A:222:PRO:C	2.39	0.42
1:A:170:VAL:CG1	1:A:174:LEU:HD13	2.50	0.42
1:A:695:LEU:O	1:A:699:VAL:HG23	2.20	0.41
1:A:383:GLN:HB2	1:A:387:LEU:HB2	2.00	0.41
1:A:96:ARG:O	1:A:97:ASN:HB2	2.19	0.41
1:A:480:ASN:ND2	1:A:482:THR:CG2	2.83	0.41
1:A:38:VAL:HG23	1:A:39:GLY:H	1.84	0.41
1:A:241:LYS:C	1:A:241:LYS:HD3	2.40	0.41
1:A:460:SER:OG	1:A:461:TYR:N	2.53	0.41
2:B:135:ARG:HB2	7:B:2162:HOH:O	2.21	0.41
1:A:146:VAL:HG12	1:A:150:GLU:OE1	2.21	0.41
1:A:35:ILE:O	1:A:38:VAL:HG22	2.20	0.41
2:B:7:LYS:O	2:B:9:LEU:N	2.54	0.41
1:A:88:THR:O	1:A:91:GLY:N	2.46	0.41
1:A:545:GLU:O	1:A:549:GLN:HB2	2.20	0.41
2:B:7:LYS:CE	2:B:7:LYS:HA	2.38	0.41
1:A:236:ILE:O	1:A:239:LEU:HB3	2.21	0.41
1:A:189:ASP:HA	1:A:192:MET:HB2	2.03	0.41
1:A:240:LYS:C	1:A:242:ASP:H	2.24	0.41
2:B:127:ARG:HD2	4:B:2137:GTG:O2B	2.21	0.41
1:A:391:LEU:HG	5:A:3000:PG4:C5	2.50	0.41
1:A:170:VAL:O	1:A:174:LEU:HD13	2.20	0.41
1:A:562:SER:O	1:A:566:LEU:HG	2.19	0.41
1:A:462:HIS:CD2	1:A:480:ASN:HA	2.56	0.40
2:B:56:ILE:HG22	2:B:69:ILE:HD13	2.03	0.40
2:B:102:ASN:OD1	2:B:112:ARG:HA	2.21	0.40
1:A:490:GLU:OE1	1:A:495:LEU:CD1	2.70	0.40
1:A:241:LYS:O	1:A:241:LYS:HG2	2.22	0.40
1:A:97:ASN:O	1:A:98:TYR:C	2.60	0.40
1:A:131:LEU:O	1:A:132:SER:C	2.59	0.40

Continued on next page...

Continued from previous page...

Atom-1	Atom-2	Interatomic distance (Å)	Clash overlap (Å)
1:A:314:ILE:O	1:A:318:LEU:HG	2.20	0.40
1:A:157:GLN:O	1:A:158:GLU:C	2.60	0.40

There are no symmetry-related clashes.

5.3 Torsion angles [i](#)

5.3.1 Protein backbone [i](#)

In the following table, the Percentiles column shows the percent Ramachandran outliers of the chain as a percentile score with respect to all X-ray entries followed by that with respect to entries of similar resolution.

The Analysed column shows the number of residues for which the backbone conformation was analysed, and the total number of residues.

Mol	Chain	Analysed	Favoured	Allowed	Outliers	Percentiles	
1	A	726/790 (92%)	660 (91%)	60 (8%)	6 (1%)	24	17
2	B	146/156 (94%)	139 (95%)	6 (4%)	1 (1%)	26	20
All	All	872/946 (92%)	799 (92%)	66 (8%)	7 (1%)	24	17

All (7) Ramachandran outliers are listed below:

Mol	Chain	Res	Type
1	A	188	LYS
2	B	8	ALA
1	A	97	ASN
1	A	249	ILE
1	A	489	ASP
1	A	181	GLY
1	A	688	LEU

5.3.2 Protein sidechains [i](#)

In the following table, the Percentiles column shows the percent sidechain outliers of the chain as a percentile score with respect to all X-ray entries followed by that with respect to entries of similar resolution.

The Analysed column shows the number of residues for which the sidechain conformation was analysed, and the total number of residues.

Mol	Chain	Analysed	Rotameric	Outliers	Percentiles	
1	A	672/724 (93%)	649 (97%)	23 (3%)	44	45
2	B	124/130 (95%)	115 (93%)	9 (7%)	17	13
All	All	796/854 (93%)	764 (96%)	32 (4%)	38	37

All (32) residues with a non-rotameric sidechain are listed below:

Mol	Chain	Res	Type
1	A	26	GLU
1	A	42	SER
1	A	70	ARG
1	A	97	ASN
1	A	117	LYS
1	A	186	GLU
1	A	188	LYS
1	A	228	TYR
1	A	241	LYS
1	A	242	ASP
1	A	251	ARG
1	A	279	ASP
1	A	293	ASP
1	A	336	LEU
1	A	387	LEU
1	A	402	LEU
1	A	431	GLU
1	A	455	LYS
1	A	464	ARG
1	A	560	SER
1	A	597	HIS
1	A	693	GLU
1	A	734	SER
2	B	7	LYS
2	B	41	THR
2	B	57	TYR
2	B	63	SER
2	B	65	ASP
2	B	81	CYS
2	B	124	GLN
2	B	129	ARG
2	B	130	SER

Some sidechains can be flipped to improve hydrogen bonding and reduce clashes. All (24) such sidechains are listed below:

Mol	Chain	Res	Type
1	A	97	ASN
1	A	120	ASN
1	A	136	ASN
1	A	245	GLN
1	A	265	GLN
1	A	367	HIS
1	A	415	ASN
1	A	425	GLN
1	A	439	GLN
1	A	462	HIS
1	A	480	ASN
1	A	498	HIS
1	A	514	ASN
1	A	553	HIS
1	A	561	HIS
1	A	596	ASN
1	A	612	GLN
1	A	649	ASN
1	A	696	GLN
1	A	703	GLN
1	A	706	GLN
1	A	753	GLN
1	A	760	GLN
2	B	29	ASN

5.3.3 RNA [i](#)

There are no RNA molecules in this entry.

5.4 Non-standard residues in protein, DNA, RNA chains [i](#)

There are no non-standard protein/DNA/RNA residues in this entry.

5.5 Carbohydrates [i](#)

There are no carbohydrates in this entry.

5.6 Ligand geometry [i](#)

Of 19 ligands modelled in this entry, 1 is monoatomic - leaving 18 for Mogul analysis.

In the following table, the Counts columns list the number of bonds (or angles) for which Mogul statistics could be retrieved, the number of bonds (or angles) that are observed in the model and the number of bonds (or angles) that are defined in the chemical component dictionary. The Link column lists molecule types, if any, to which the group is linked. The Z score for a bond length (or angle) is the number of standard deviations the observed value is removed from the expected value. A bond length (or angle) with $|Z| > 2$ is considered an outlier worth inspection. RMSZ is the root-mean-square of all Z scores of the bond lengths (or angles).

Mol	Type	Chain	Res	Link	Bond lengths			Bond angles		
					Counts	RMSZ	# $ Z > 2$	Counts	RMSZ	# $ Z > 2$
6	GOL	A	1555	-	5,5,5	4.84	5 (100%)	5,5,5	5.70	3 (60%)
6	GOL	A	1556	-	5,5,5	4.72	5 (100%)	5,5,5	5.74	3 (60%)
6	GOL	A	1557	-	5,5,5	4.72	5 (100%)	5,5,5	5.72	3 (60%)
6	GOL	A	1560	-	5,5,5	4.75	5 (100%)	5,5,5	5.69	3 (60%)
6	GOL	A	1561	-	5,5,5	4.79	5 (100%)	5,5,5	5.70	3 (60%)
6	GOL	A	1564	-	5,5,5	4.73	5 (100%)	5,5,5	5.72	3 (60%)
6	GOL	A	1565	-	5,5,5	4.82	5 (100%)	5,5,5	5.70	3 (60%)
6	GOL	A	1566	-	5,5,5	4.82	5 (100%)	5,5,5	5.69	3 (60%)
6	GOL	A	1569	-	5,5,5	4.77	5 (100%)	5,5,5	5.70	3 (60%)
6	GOL	A	1572	-	5,5,5	4.81	5 (100%)	5,5,5	5.75	3 (60%)
6	GOL	A	1573	-	5,5,5	4.74	5 (100%)	5,5,5	5.73	3 (60%)
5	PG4	A	3000	-	12,12,12	1.21	0	11,11,11	1.64	3 (27%)
6	GOL	B	1558	-	5,5,5	4.73	5 (100%)	5,5,5	5.71	3 (60%)
6	GOL	B	1568	-	5,5,5	4.67	5 (100%)	5,5,5	5.79	3 (60%)
6	GOL	B	1570	-	5,5,5	4.80	5 (100%)	5,5,5	5.75	3 (60%)
6	GOL	B	1571	-	5,5,5	4.88	5 (100%)	5,5,5	5.74	3 (60%)
6	GOL	B	1574	-	5,5,5	4.60	5 (100%)	5,5,5	5.87	3 (60%)
4	GTG	B	2137	-	43,57,57	2.82	19 (44%)	53,90,90	4.50	25 (47%)

In the following table, the Chirals column lists the number of chiral outliers, the number of chiral centers analysed, the number of these observed in the model and the number defined in the chemical component dictionary. Similar counts are reported in the Torsion and Rings columns. '-' means no outliers of that kind were identified.

Mol	Type	Chain	Res	Link	Chirals	Torsions	Rings
6	GOL	A	1555	-	-	0/4/4/4	0/0/0/0
6	GOL	A	1556	-	-	0/4/4/4	0/0/0/0
6	GOL	A	1557	-	-	0/4/4/4	0/0/0/0
6	GOL	A	1560	-	-	0/4/4/4	0/0/0/0
6	GOL	A	1561	-	-	0/4/4/4	0/0/0/0
6	GOL	A	1564	-	-	0/4/4/4	0/0/0/0

Continued on next page...

Continued from previous page...

Mol	Type	Chain	Res	Link	Chirals	Torsions	Rings
6	GOL	A	1565	-	-	0/4/4/4	0/0/0/0
6	GOL	A	1566	-	-	0/4/4/4	0/0/0/0
6	GOL	A	1569	-	-	0/4/4/4	0/0/0/0
6	GOL	A	1572	-	-	0/4/4/4	0/0/0/0
6	GOL	A	1573	-	-	0/4/4/4	0/0/0/0
5	PG4	A	3000	-	-	0/10/10/10	0/0/0/0
6	GOL	B	1558	-	-	0/4/4/4	0/0/0/0
6	GOL	B	1568	-	-	0/4/4/4	0/0/0/0
6	GOL	B	1570	-	-	0/4/4/4	0/0/0/0
6	GOL	B	1571	-	-	0/4/4/4	0/0/0/0
6	GOL	B	1574	-	-	0/4/4/4	0/0/0/0
4	GTG	B	2137	-	-	1/24/64/64	0/6/6/6

All (99) bond length outliers are listed below:

Mol	Chain	Res	Type	Atoms	Z	Observed(Å)	Ideal(Å)
6	A	1555	GOL	C3-C2	-8.32	1.20	1.52
6	A	1566	GOL	C3-C2	-8.17	1.21	1.52
6	A	1569	GOL	C3-C2	-8.16	1.21	1.52
6	A	1565	GOL	C3-C2	-8.12	1.21	1.52
6	A	1572	GOL	C3-C2	-8.09	1.21	1.52
6	A	1561	GOL	C3-C2	-8.09	1.21	1.52
6	B	1570	GOL	C3-C2	-8.04	1.21	1.52
6	A	1560	GOL	C3-C2	-7.99	1.21	1.52
6	B	1558	GOL	C3-C2	-7.97	1.21	1.52
6	A	1573	GOL	C3-C2	-7.96	1.21	1.52
6	A	1564	GOL	C3-C2	-7.92	1.22	1.52
6	B	1571	GOL	C3-C2	-7.88	1.22	1.52
6	A	1556	GOL	C3-C2	-7.87	1.22	1.52
6	A	1557	GOL	C3-C2	-7.81	1.22	1.52
6	B	1568	GOL	C3-C2	-7.80	1.22	1.52
6	B	1574	GOL	C3-C2	-7.62	1.23	1.52
4	B	2137	GTG	C8B-N7B	-4.24	1.26	1.34
4	B	2137	GTG	C5E-C4E	-4.05	1.38	1.51
6	B	1571	GOL	C1-C2	-3.89	1.37	1.52
6	B	1570	GOL	C1-C2	-3.57	1.38	1.52
6	B	1574	GOL	C1-C2	-3.56	1.38	1.52
6	A	1573	GOL	C1-C2	-3.35	1.39	1.52
6	A	1569	GOL	C1-C2	-3.34	1.39	1.52
6	A	1555	GOL	C1-C2	-3.27	1.39	1.52
6	B	1558	GOL	C1-C2	-3.23	1.40	1.52
6	A	1561	GOL	C1-C2	-3.23	1.40	1.52

Continued on next page...

Continued from previous page...

Mol	Chain	Res	Type	Atoms	Z	Observed(Å)	Ideal(Å)
4	B	2137	GTG	O3E-C3E	-3.23	1.35	1.43
6	A	1566	GOL	C1-C2	-3.17	1.40	1.52
6	A	1572	GOL	O2-C2	-3.15	1.34	1.43
6	A	1572	GOL	C1-C2	-3.15	1.40	1.52
6	B	1568	GOL	C1-C2	-3.12	1.40	1.52
6	B	1571	GOL	O2-C2	-3.11	1.34	1.43
6	A	1565	GOL	C1-C2	-3.11	1.40	1.52
6	A	1564	GOL	C1-C2	-3.04	1.40	1.52
6	A	1560	GOL	C1-C2	-3.04	1.40	1.52
6	A	1556	GOL	C1-C2	-3.02	1.40	1.52
6	B	1570	GOL	O2-C2	-2.98	1.34	1.43
6	A	1557	GOL	C1-C2	-2.93	1.41	1.52
6	A	1569	GOL	O2-C2	-2.86	1.34	1.43
6	B	1568	GOL	O2-C2	-2.86	1.34	1.43
6	A	1565	GOL	O2-C2	-2.86	1.34	1.43
6	A	1566	GOL	O2-C2	-2.82	1.35	1.43
6	A	1555	GOL	O2-C2	-2.81	1.35	1.43
6	A	1560	GOL	O2-C2	-2.80	1.35	1.43
6	A	1561	GOL	O2-C2	-2.79	1.35	1.43
6	A	1573	GOL	O2-C2	-2.77	1.35	1.43
6	A	1556	GOL	O2-C2	-2.75	1.35	1.43
6	B	1558	GOL	O2-C2	-2.74	1.35	1.43
6	A	1557	GOL	O2-C2	-2.71	1.35	1.43
6	A	1564	GOL	O2-C2	-2.70	1.35	1.43
4	B	2137	GTG	O5E-C5E	-2.59	1.34	1.44
6	B	1574	GOL	O2-C2	-2.45	1.36	1.43
4	B	2137	GTG	PB-O1B	-2.25	1.43	1.51
4	B	2137	GTG	C6B-C5B	2.01	1.45	1.41
4	B	2137	GTG	C4A-N3A	2.16	1.39	1.35
4	B	2137	GTG	C4B-N3B	2.19	1.39	1.35
4	B	2137	GTG	PA-O5D	2.33	1.69	1.59
4	B	2137	GTG	C2A-N1A	2.38	1.39	1.35
4	B	2137	GTG	C8A-N9A	2.44	1.37	1.33
4	B	2137	GTG	C2B-N1B	2.59	1.40	1.35
4	B	2137	GTG	O4D-C1D	2.62	1.44	1.41
4	B	2137	GTG	C3E-C4E	2.74	1.60	1.53
6	A	1569	GOL	O3-C3	3.14	1.55	1.42
6	A	1555	GOL	O3-C3	3.19	1.56	1.42
6	B	1570	GOL	O3-C3	3.22	1.56	1.42
6	A	1572	GOL	O3-C3	3.24	1.56	1.42
6	A	1566	GOL	O3-C3	3.33	1.56	1.42
6	A	1561	GOL	O3-C3	3.37	1.56	1.42

Continued on next page...

Continued from previous page...

Mol	Chain	Res	Type	Atoms	Z	Observed(Å)	Ideal(Å)
6	B	1558	GOL	O3-C3	3.38	1.57	1.42
6	A	1560	GOL	O3-C3	3.40	1.57	1.42
6	A	1573	GOL	O3-C3	3.40	1.57	1.42
6	A	1564	GOL	O3-C3	3.40	1.57	1.42
6	A	1565	GOL	O3-C3	3.41	1.57	1.42
6	B	1571	GOL	O3-C3	3.42	1.57	1.42
6	B	1568	GOL	O3-C3	3.48	1.57	1.42
6	A	1556	GOL	O3-C3	3.51	1.57	1.42
6	B	1574	GOL	O3-C3	3.56	1.57	1.42
6	A	1557	GOL	O3-C3	3.60	1.57	1.42
4	B	2137	GTG	PG-O5E	3.71	1.76	1.59
4	B	2137	GTG	C6B-N1B	3.90	1.40	1.33
6	B	1574	GOL	O1-C1	4.04	1.59	1.42
4	B	2137	GTG	C6A-N1A	4.18	1.40	1.33
6	A	1569	GOL	O1-C1	4.22	1.60	1.42
6	B	1568	GOL	O1-C1	4.24	1.60	1.42
6	B	1570	GOL	O1-C1	4.28	1.60	1.42
6	A	1573	GOL	O1-C1	4.30	1.60	1.42
6	A	1555	GOL	O1-C1	4.36	1.61	1.42
6	B	1558	GOL	O1-C1	4.37	1.61	1.42
6	A	1572	GOL	O1-C1	4.44	1.61	1.42
6	A	1561	GOL	O1-C1	4.44	1.61	1.42
6	A	1560	GOL	O1-C1	4.49	1.61	1.42
6	A	1566	GOL	O1-C1	4.50	1.61	1.42
6	B	1571	GOL	O1-C1	4.53	1.61	1.42
6	A	1565	GOL	O1-C1	4.53	1.61	1.42
6	A	1556	GOL	O1-C1	4.55	1.62	1.42
6	A	1564	GOL	O1-C1	4.57	1.62	1.42
6	A	1557	GOL	O1-C1	4.65	1.62	1.42
4	B	2137	GTG	O4E-C4E	5.69	1.58	1.45
4	B	2137	GTG	O4E-C1E	11.59	1.55	1.41

All (76) bond angle outliers are listed below:

Mol	Chain	Res	Type	Atoms	Z	Observed(°)	Ideal(°)
4	B	2137	GTG	O3A-PA-O5D	-10.54	74.97	102.94
4	B	2137	GTG	C5E-C4E-C3E	-9.70	76.70	115.21
4	B	2137	GTG	C5B-C6B-N1B	-8.56	111.88	123.59
4	B	2137	GTG	C5A-C6A-N1A	-7.63	113.15	123.59
4	B	2137	GTG	O4E-C4E-C3E	-5.84	93.38	105.15
4	B	2137	GTG	O5E-PG-O1G	-5.35	88.84	109.62
4	B	2137	GTG	O5D-PA-O1A	-5.16	89.60	109.62

Continued on next page...

Continued from previous page...

Mol	Chain	Res	Type	Atoms	Z	Observed(°)	Ideal(°)
4	B	2137	GTG	O2A-PA-O5D	-5.06	82.93	108.46
4	B	2137	GTG	N3A-C2A-N1A	-4.27	120.95	127.44
4	B	2137	GTG	N3B-C2B-N1B	-4.00	121.36	127.44
4	B	2137	GTG	O2G-PG-O5E	-3.21	92.26	108.46
4	B	2137	GTG	O2B-PB-O3A	-2.43	94.08	105.09
4	B	2137	GTG	C1D-N9A-C4A	-2.17	123.67	126.94
4	B	2137	GTG	C6A-C5A-C4A	-2.08	118.41	120.90
4	B	2137	GTG	O2G-PG-O3B	2.14	114.79	105.09
4	B	2137	GTG	O2A-PA-O3A	2.16	114.91	105.09
5	A	3000	PG4	O4-C7-C8	2.43	121.61	110.43
4	B	2137	GTG	C2D-C3D-C4D	2.44	107.64	102.61
5	A	3000	PG4	O4-C6-C5	2.70	122.38	110.36
5	A	3000	PG4	O3-C5-C6	2.74	122.53	110.36
4	B	2137	GTG	O5D-C5D-C4D	2.78	119.36	109.12
6	B	1574	GOL	O1-C1-C2	2.82	123.86	110.18
6	A	1573	GOL	O1-C1-C2	2.92	124.36	110.18
6	A	1569	GOL	O1-C1-C2	2.94	124.45	110.18
6	B	1570	GOL	O1-C1-C2	2.99	124.69	110.18
6	A	1555	GOL	O1-C1-C2	3.03	124.90	110.18
6	A	1572	GOL	O1-C1-C2	3.08	125.13	110.18
6	B	1558	GOL	O1-C1-C2	3.19	125.64	110.18
6	B	1571	GOL	O1-C1-C2	3.24	125.91	110.18
6	A	1565	GOL	O1-C1-C2	3.25	125.93	110.18
6	A	1557	GOL	O1-C1-C2	3.25	125.95	110.18
6	A	1566	GOL	O1-C1-C2	3.27	126.02	110.18
6	A	1560	GOL	O1-C1-C2	3.28	126.09	110.18
6	A	1561	GOL	O1-C1-C2	3.29	126.15	110.18
4	B	2137	GTG	O4E-C1E-N9B	3.31	115.03	108.10
6	A	1556	GOL	O1-C1-C2	3.32	126.29	110.18
6	A	1564	GOL	O1-C1-C2	3.32	126.31	110.18
6	B	1568	GOL	O1-C1-C2	3.49	127.13	110.18
6	A	1572	GOL	O2-C2-C3	6.48	138.35	108.65
6	A	1555	GOL	O2-C2-C3	6.50	138.44	108.65
6	A	1556	GOL	O2-C2-C3	6.55	138.70	108.65
6	B	1574	GOL	O2-C2-C3	6.56	138.72	108.65
6	B	1568	GOL	O2-C2-C3	6.58	138.81	108.65
6	A	1560	GOL	O2-C2-C3	6.59	138.86	108.65
6	A	1566	GOL	O2-C2-C3	6.59	138.88	108.65
6	A	1565	GOL	O2-C2-C3	6.60	138.93	108.65
6	A	1564	GOL	O2-C2-C3	6.60	138.93	108.65
6	B	1558	GOL	O2-C2-C3	6.60	138.93	108.65
6	A	1557	GOL	O2-C2-C3	6.64	139.09	108.65

Continued on next page...

Continued from previous page...

Mol	Chain	Res	Type	Atoms	Z	Observed(°)	Ideal(°)
6	A	1561	GOL	O2-C2-C3	6.65	139.16	108.65
6	A	1569	GOL	O2-C2-C3	6.66	139.18	108.65
6	B	1570	GOL	O2-C2-C3	6.68	139.29	108.65
4	B	2137	GTG	O5E-C5E-C4E	6.73	133.93	109.12
6	A	1573	GOL	O2-C2-C3	6.74	139.54	108.65
4	B	2137	GTG	C4E-O4E-C1E	6.77	117.16	109.72
4	B	2137	GTG	C2E-C3E-C4E	6.87	116.74	102.61
6	B	1571	GOL	O2-C2-C3	6.92	140.38	108.65
4	B	2137	GTG	C6A-N1A-C2A	7.06	125.74	115.94
4	B	2137	GTG	C6B-N1B-C2B	7.36	126.16	115.94
6	B	1571	GOL	O3-C3-C2	10.31	160.19	110.18
6	A	1561	GOL	O3-C3-C2	10.33	160.27	110.18
6	A	1566	GOL	O3-C3-C2	10.35	160.39	110.18
6	A	1560	GOL	O3-C3-C2	10.37	160.46	110.18
6	A	1565	GOL	O3-C3-C2	10.39	160.58	110.18
6	A	1564	GOL	O3-C3-C2	10.40	160.62	110.18
6	A	1557	GOL	O3-C3-C2	10.41	160.67	110.18
6	B	1558	GOL	O3-C3-C2	10.42	160.72	110.18
6	A	1569	GOL	O3-C3-C2	10.46	160.90	110.18
6	A	1573	GOL	O3-C3-C2	10.48	161.03	110.18
6	A	1556	GOL	O3-C3-C2	10.51	161.14	110.18
6	A	1555	GOL	O3-C3-C2	10.52	161.19	110.18
6	B	1570	GOL	O3-C3-C2	10.55	161.37	110.18
6	B	1568	GOL	O3-C3-C2	10.59	161.53	110.18
6	A	1572	GOL	O3-C3-C2	10.67	161.91	110.18
6	B	1574	GOL	O3-C3-C2	10.99	163.48	110.18
4	B	2137	GTG	O3B-PG-O5E	15.75	144.71	102.94

There are no chirality outliers.

All (1) torsion outliers are listed below:

Mol	Chain	Res	Type	Atoms
4	B	2137	GTG	PG-O5E-C5E-C4E

There are no ring outliers.

10 monomers are involved in 28 short contacts:

Mol	Chain	Res	Type	Clashes	Symm-Clashes
6	A	1556	GOL	1	0
6	A	1564	GOL	1	0
6	A	1569	GOL	1	0

Continued on next page...

Continued from previous page...

Mol	Chain	Res	Type	Clashes	Symm-Clashes
6	A	1572	GOL	3	0
5	A	3000	PG4	7	0
6	B	1568	GOL	2	0
6	B	1570	GOL	2	0
6	B	1571	GOL	4	0
6	B	1574	GOL	5	0
4	B	2137	GTG	3	0

5.7 Other polymers [i](#)

There are no such residues in this entry.

5.8 Polymer linkage issues [i](#)

There are no chain breaks in this entry.

6 Fit of model and data

6.1 Protein, DNA and RNA chains

In the following table, the column labelled ‘#RSRZ> 2’ contains the number (and percentage) of RSRZ outliers, followed by percent RSRZ outliers for the chain as percentile scores relative to all X-ray entries and entries of similar resolution. The OWAB column contains the minimum, median, 95th percentile and maximum values of the occupancy-weighted average B-factor per residue. The column labelled ‘Q< 0.9’ lists the number of (and percentage) of residues with an average occupancy less than 0.9.

Mol	Chain	Analysed	<RSRZ>	#RSRZ>2	OWAB(Å ²)	Q<0.9
1	A	732/790 (92%)	0.61	67 (9%) 11 15	25, 48, 74, 90	0
2	B	148/156 (94%)	0.33	5 (3%) 49 58	28, 42, 63, 73	0
All	All	880/946 (93%)	0.56	72 (8%) 14 19	25, 47, 73, 90	0

All (72) RSRZ outliers are listed below:

Mol	Chain	Res	Type	RSRZ
1	A	271	PHE	5.5
1	A	664	GLU	5.5
1	A	29	ASP	4.8
2	B	6	LEU	4.6
1	A	519	SER	4.6
1	A	489	ASP	4.0
2	B	138	TYR	3.9
1	A	270	PRO	3.8
2	B	152	LEU	3.5
1	A	521	LEU	3.5
1	A	44	CYS	3.5
1	A	491	SER	3.5
1	A	343	ASN	3.5
1	A	490	GLU	3.3
1	A	138	HIS	3.2
1	A	663	LYS	3.2
1	A	660	GLU	3.1
1	A	184	LEU	3.0
1	A	264	LEU	3.0
1	A	245	GLN	3.0
1	A	185	TYR	3.0
1	A	662	ALA	3.0
2	B	76	MET	2.9
1	A	272	THR	2.9

Continued on next page...

Continued from previous page...

Mol	Chain	Res	Type	RSRZ
1	A	514	ASN	2.9
1	A	526	ASN	2.9
1	A	256	PHE	2.8
1	A	524	VAL	2.7
1	A	373	THR	2.7
1	A	254	LEU	2.6
1	A	688	LEU	2.6
2	B	10	ARG	2.6
1	A	510	SER	2.6
1	A	540	ASN	2.6
1	A	496	PRO	2.5
1	A	268	LEU	2.5
1	A	30	HIS	2.5
1	A	32	GLU	2.4
1	A	159	GLU	2.4
1	A	522	LYS	2.4
1	A	581	GLU	2.4
1	A	27	THR	2.4
1	A	342	LYS	2.4
1	A	194	ARG	2.4
1	A	518	PHE	2.3
1	A	539	PHE	2.3
1	A	42	SER	2.3
1	A	730	THR	2.3
1	A	135	VAL	2.3
1	A	488	GLY	2.2
1	A	452	VAL	2.2
1	A	497	GLY	2.2
1	A	689	GLU	2.2
1	A	50	LEU	2.2
1	A	355	ILE	2.2
1	A	26	GLU	2.2
1	A	569	PHE	2.2
1	A	523	ASP	2.1
1	A	370	VAL	2.1
1	A	692	ILE	2.1
1	A	352	VAL	2.1
1	A	659	LEU	2.1
1	A	365	PRO	2.1
1	A	47	GLU	2.1
1	A	64	TYR	2.1
1	A	729	GLU	2.1

Continued on next page...

Continued from previous page...

Mol	Chain	Res	Type	RSRZ
1	A	95	ALA	2.1
1	A	733	THR	2.0
1	A	117	LYS	2.0
1	A	601	ILE	2.0
1	A	357	ALA	2.0
1	A	366	PRO	2.0

6.2 Non-standard residues in protein, DNA, RNA chains [i](#)

There are no non-standard protein/DNA/RNA residues in this entry.

6.3 Carbohydrates [i](#)

There are no carbohydrates in this entry.

6.4 Ligands [i](#)

In the following table, the Atoms column lists the number of modelled atoms in the group and the number defined in the chemical component dictionary. LLDF column lists the quality of electron density of the group with respect to its neighbouring residues in protein, DNA or RNA chains. The B-factors column lists the minimum, median, 95th percentile and maximum values of B factors of atoms in the group. The column labelled 'Q< 0.9' lists the number of atoms with occupancy less than 0.9.

Mol	Type	Chain	Res	Atoms	RSCC	RSR	LLDF	B-factors(Å ²)	Q<0.9
6	GOL	A	1556	6/6	0.69	0.35	8.62	71,74,74,75	0
6	GOL	A	1561	6/6	0.79	0.31	5.14	81,82,82,83	0
6	GOL	B	1558	6/6	0.80	0.23	4.44	67,69,70,71	0
6	GOL	A	1564	6/6	0.55	0.37	4.31	72,73,74,74	0
6	GOL	A	1569	6/6	0.84	0.20	4.19	68,68,69,69	0
5	PG4	A	3000	13/13	0.76	0.27	4.17	49,52,55,55	0
6	GOL	B	1570	6/6	0.90	0.26	4.06	55,61,63,68	0
6	GOL	A	1555	6/6	0.85	0.22	3.03	51,54,55,56	0
6	GOL	A	1572	6/6	0.69	0.23	2.80	62,64,65,65	0
6	GOL	A	1566	6/6	0.77	0.20	2.37	83,84,84,86	0
6	GOL	A	1573	6/6	0.80	0.18	1.68	67,67,68,68	0
6	GOL	B	1568	6/6	0.75	0.17	1.56	59,60,61,62	0
6	GOL	A	1565	6/6	0.71	0.22	1.46	74,76,76,77	0
6	GOL	A	1557	6/6	0.71	0.18	1.29	57,61,62,62	0
4	GTG	B	2137	52/52	0.92	0.18	0.79	30,55,78,79	0

Continued on next page...

Continued from previous page...

Mol	Type	Chain	Res	Atoms	RSCC	RSR	LLDF	B-factors(\AA^2)	Q<0.9
6	GOL	B	1571	6/6	0.85	0.13	-0.24	49,51,52,54	0
3	MG	A	6000	1/1	0.97	0.07	-4.54	32,32,32,32	0
6	GOL	A	1560	6/6	0.60	0.22	-	76,76,76,77	0
6	GOL	B	1574	6/6	0.88	0.30	-	59,61,61,62	0

6.5 Other polymers [i](#)

There are no such residues in this entry.