



# Full wwPDB X-ray Structure Validation Report ⓘ

Feb 1, 2016 – 10:50 AM GMT

PDB ID : 3N6M  
Title : Crystal structure of EV71 RdRp in complex with GTP  
Authors : Wu, Y.; Lou, Z.Y.; Miao, Y.; Yu, Y.; Rao, Z.H.  
Deposited on : 2010-05-26  
Resolution : 2.50 Å(reported)

This is a Full wwPDB X-ray Structure Validation Report for a publicly released PDB entry.  
We welcome your comments at [validation@mail.wwpdb.org](mailto:validation@mail.wwpdb.org)  
A user guide is available at  
<http://wwpdb.org/validation/2016/XrayValidationReportHelp>  
with specific help available everywhere you see the ⓘ symbol.

---

The following versions of software and data (see [references ⓘ](#)) were used in the production of this report:

MolProbity : 4.02b-467  
Mogul : 1.7 (RC4), CSD as536be (2015)  
Xtriage (Phenix) : 1.9-1692  
EDS : rb-20026688  
Percentile statistics : 20151230.v01 (using entries in the PDB archive December 30th 2015)  
Refmac : 5.8.0135  
CCP4 : 6.5.0  
Ideal geometry (proteins) : Engh & Huber (2001)  
Ideal geometry (DNA, RNA) : Parkinson et al. (1996)  
Validation Pipeline (wwPDB-VP) : trunk26865

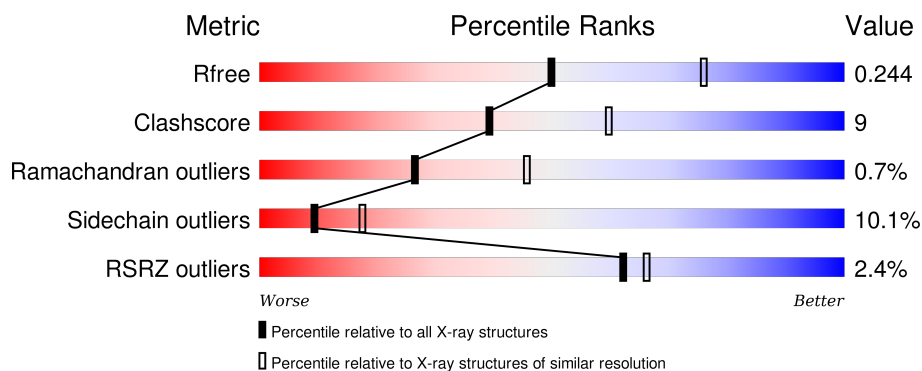
# 1 Overall quality at a glance

The following experimental techniques were used to determine the structure:

## *X-RAY DIFFRACTION*

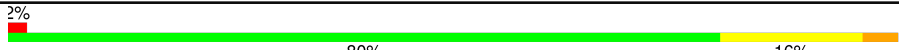
The reported resolution of this entry is 2.50 Å.

Percentile scores (ranging between 0-100) for global validation metrics of the entry are shown in the following graphic. The table shows the number of entries on which the scores are based.



Metric	Whole archive (#Entries)	Similar resolution (#Entries, resolution range(Å))
$R_{free}$	91344	3553 (2.50-2.50)
Clashscore	102246	4242 (2.50-2.50)
Ramachandran outliers	100387	4156 (2.50-2.50)
Sidechain outliers	100360	4158 (2.50-2.50)
RSRZ outliers	91569	3562 (2.50-2.50)

The table below summarises the geometric issues observed across the polymeric chains and their fit to the electron density. The red, orange, yellow and green segments on the lower bar indicate the fraction of residues that contain outliers for  $\geq 3$ , 2, 1 and 0 types of geometric quality criteria. A grey segment represents the fraction of residues that are not modelled. The numeric value for each fraction is indicated below the corresponding segment, with a dot representing fractions  $\leq 5\%$ . The upper red bar (where present) indicates the fraction of residues that have poor fit to the electron density. The numeric value is given above the bar.

Mol	Chain	Length	Quality of chain
1	A	462	

## 2 Entry composition [i](#)

There are 4 unique types of molecules in this entry. The entry contains 3963 atoms, of which 0 are hydrogens and 0 are deuteriums.

In the tables below, the ZeroOcc column contains the number of atoms modelled with zero occupancy, the AltConf column contains the number of residues with at least one atom in alternate conformation and the Trace column contains the number of residues modelled with at most 2 atoms.

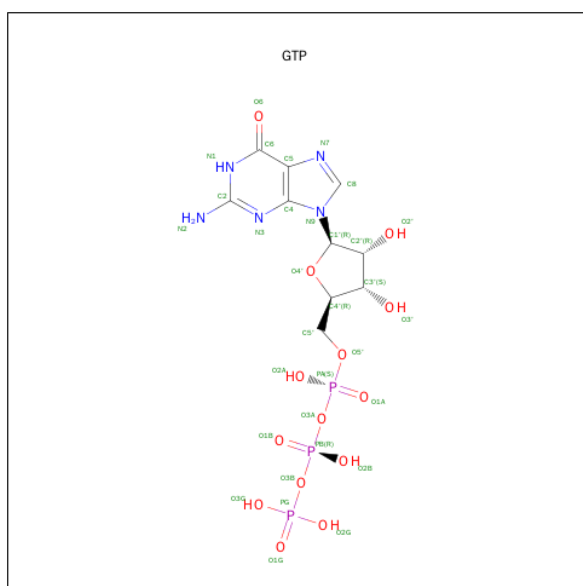
- Molecule 1 is a protein called RNA-dependent RNA polymerase.

Mol	Chain	Residues	Atoms					ZeroOcc	AltConf	Trace
1	A	462	Total	C	N	O	S	0	0	0
			3700	2368	619	695	18			

- Molecule 2 is NICKEL (II) ION (three-letter code: NI) (formula: Ni).

Mol	Chain	Residues	Atoms		ZeroOcc	AltConf
2	A	1	Total	Ni	0	0
			1	1		

- Molecule 3 is GUANOSINE-5'-TRIPHOSPHATE (three-letter code: GTP) (formula: C<sub>10</sub>H<sub>16</sub>N<sub>5</sub>O<sub>14</sub>P<sub>3</sub>).

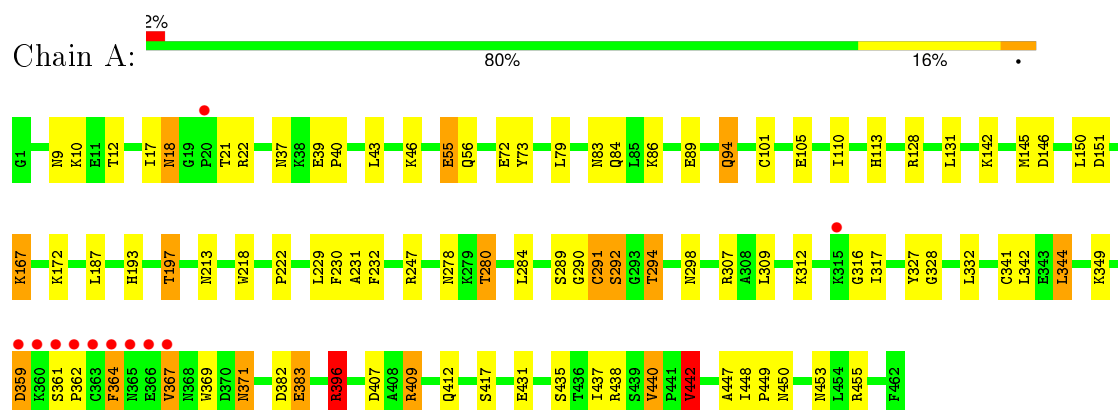


Mol	Chain	Residues	Atoms		ZeroOcc	AltConf
4	A	230	Total 230	O 230	0	0

### 3 Residue-property plots

These plots are drawn for all protein, RNA and DNA chains in the entry. The first graphic for a chain summarises the proportions of errors displayed in the second graphic. The second graphic shows the sequence view annotated by issues in geometry and electron density. Residues are color-coded according to the number of geometric quality criteria for which they contain at least one outlier: green = 0, yellow = 1, orange = 2 and red = 3 or more. A red dot above a residue indicates a poor fit to the electron density ( $RSRZ > 2$ ). Stretches of 2 or more consecutive residues without any outlier are shown as a green connector. Residues present in the sample, but not in the model, are shown in grey.

- Molecule 1: RNA-dependent RNA polymerase



## 4 Data and refinement statistics

Property	Value	Source
Space group	P 32 2 1	Depositor
Cell constants a, b, c, $\alpha$ , $\beta$ , $\gamma$	103.49Å 103.49Å 133.05Å 90.00° 90.00° 120.00°	Depositor
Resolution (Å)	50.00 – 2.50 42.47 – 2.50	Depositor EDS
% Data completeness (in resolution range)	100.0 (50.00-2.50) 100.0 (42.47-2.50)	Depositor EDS
$R_{merge}$	0.10	Depositor
$R_{sym}$	(Not available)	Depositor
$\langle I/\sigma(I) \rangle$ <sup>1</sup>	3.33 (at 2.51Å)	Xtriage
Refinement program	REFMAC 5.2.0019	Depositor
R, $R_{free}$	0.194 , 0.249 0.193 , 0.244	Depositor DCC
$R_{free}$ test set	1486 reflections (5.39%)	DCC
Wilson B-factor (Å <sup>2</sup> )	46.4	Xtriage
Anisotropy	0.080	Xtriage
Bulk solvent $k_{sol}$ (e/Å <sup>3</sup> ), $B_{sol}$ (Å <sup>2</sup> )	0.34 , 29.8	EDS
Estimated twinning fraction	0.023 for -h,-k,l	Xtriage
L-test for twinning <sup>2</sup>	$\langle  L  \rangle = 0.49$ , $\langle L^2 \rangle = 0.32$	Xtriage
Outliers	0 of 29068 reflections	Xtriage
$F_o, F_c$ correlation	0.95	EDS
Total number of atoms	3963	wwPDB-VP
Average B, all atoms (Å <sup>2</sup> )	43.0	wwPDB-VP

Xtriage's analysis on translational NCS is as follows: *The largest off-origin peak in the Patterson function is 3.75% of the height of the origin peak. No significant pseudotranslation is detected.*

<sup>1</sup>Intensities estimated from amplitudes.

<sup>2</sup>Theoretical values of  $\langle |L| \rangle$ ,  $\langle L^2 \rangle$  for acentric reflections are 0.5, 0.375 respectively for untwinned datasets, and 0.333, 0.2 for perfectly twinned datasets.

## 5 Model quality

### 5.1 Standard geometry

Bond lengths and bond angles in the following residue types are not validated in this section: GTP, NI

The Z score for a bond length (or angle) is the number of standard deviations the observed value is removed from the expected value. A bond length (or angle) with  $|Z| > 5$  is considered an outlier worth inspection. RMSZ is the root-mean-square of all Z scores of the bond lengths (or angles).

Mol	Chain	Bond lengths		Bond angles	
		RMSZ	$\# Z  > 5$	RMSZ	$\# Z  > 5$
1	A	0.66	0/3795	0.73	2/5144 (0.0%)

Chiral center outliers are detected by calculating the chiral volume of a chiral center and verifying if the center is modelled as a planar moiety or with the opposite hand. A planarity outlier is detected by checking planarity of atoms in a peptide group, atoms in a mainchain group or atoms of a sidechain that are expected to be planar.

Mol	Chain	#Chirality outliers	#Planarity outliers
1	A	0	1

There are no bond length outliers.

All (2) bond angle outliers are listed below:

Mol	Chain	Res	Type	Atoms	Z	Observed( $^{\circ}$ )	Ideal( $^{\circ}$ )
1	A	442	VAL	CB-CA-C	-5.88	100.23	111.40
1	A	396	ARG	NE-CZ-NH1	5.74	123.17	120.30

There are no chirality outliers.

All (1) planarity outliers are listed below:

Mol	Chain	Res	Type	Group
1	A	291	CYS	Peptide

### 5.2 Too-close contacts

In the following table, the Non-H and H(model) columns list the number of non-hydrogen atoms and hydrogen atoms in the chain respectively. The H(added) column lists the number of hydrogen atoms added and optimized by MolProbity. The Clashes column lists the number of clashes within the asymmetric unit, whereas Symm-Clashes lists symmetry related clashes.

Mol	Chain	Non-H	H(model)	H(added)	Clashes	Symm-Clashes
1	A	3700	0	3635	66	0
2	A	1	0	0	0	0
3	A	32	0	12	2	0
4	A	230	0	0	16	0
All	All	3963	0	3647	66	0

The all-atom clashscore is defined as the number of clashes found per 1000 atoms (including hydrogen atoms). The all-atom clashscore for this structure is 9.

All (66) close contacts within the same asymmetric unit are listed below, sorted by their clash magnitude.

Atom-1	Atom-2	Interatomic distance (Å)	Clash overlap (Å)
1:A:396:ARG:HH11	1:A:396:ARG:HG3	1.32	0.94
1:A:409:ARG:HH11	1:A:409:ARG:HG3	1.31	0.94
1:A:55:GLU:HG3	4:A:621:HOH:O	1.65	0.93
1:A:72:GLU:HG2	4:A:624:HOH:O	1.74	0.88
1:A:431:GLU:HG3	4:A:692:HOH:O	1.74	0.85
1:A:9:ASN:OD1	1:A:280:THR:HG22	1.80	0.82
1:A:316:GLY:HA2	4:A:597:HOH:O	1.79	0.81
1:A:232:PHE:HZ	1:A:344:LEU:HD12	1.47	0.79
1:A:383:GLU:HG3	4:A:661:HOH:O	1.87	0.74
1:A:197:THR:HB	4:A:650:HOH:O	1.88	0.73
1:A:105:GLU:HB3	4:A:628:HOH:O	1.90	0.71
1:A:450:ASN:ND2	1:A:453:ASN:H	1.89	0.71
1:A:18:ASN:OD1	1:A:18:ASN:N	2.31	0.64
1:A:450:ASN:HD22	1:A:453:ASN:H	1.47	0.62
1:A:396:ARG:HG3	1:A:396:ARG:NH1	2.08	0.61
1:A:231:ALA:H	1:A:364:PHE:HZ	1.49	0.60
1:A:382:ASP:OD2	1:A:455:ARG:NH1	2.35	0.60
1:A:9:ASN:ND2	1:A:278:ASN:HA	2.18	0.59
1:A:83:ASN:HA	1:A:86:LYS:HD2	1.85	0.57
1:A:291:CYS:HB3	4:A:647:HOH:O	2.05	0.57
1:A:412:GLN:HE22	1:A:447:ALA:H	1.53	0.55
1:A:12:THR:OG1	1:A:280:THR:HG21	2.05	0.55
1:A:409:ARG:NH1	1:A:409:ARG:HG3	2.09	0.55
1:A:232:PHE:CZ	1:A:344:LEU:HD12	2.36	0.55
1:A:438:ARG:NH2	4:A:519:HOH:O	2.40	0.55
1:A:341:CYS:SG	1:A:364:PHE:CZ	2.95	0.54
1:A:193:HIS:O	1:A:197:THR:HG22	2.11	0.51
1:A:290:GLY:HA2	3:A:464:GTP:O6	2.09	0.51
1:A:105:GLU:CB	4:A:628:HOH:O	2.56	0.51
1:A:230:PHE:HA	1:A:364:PHE:CE2	2.45	0.51

*Continued on next page...*



*Continued from previous page...*

Atom-1	Atom-2	Interatomic distance (Å)	Clash overlap (Å)
1:A:94:GLN:HG3	4:A:655:HOH:O	2.11	0.50
1:A:382:ASP:CG	1:A:455:ARG:HH12	2.16	0.50
1:A:73:TYR:CD1	1:A:312:LYS:HD2	2.47	0.50
1:A:213:ASN:HB2	4:A:631:HOH:O	2.12	0.49
1:A:172:LYS:HG3	4:A:641:HOH:O	2.11	0.48
1:A:291:CYS:HA	1:A:292:SER:HB2	1.96	0.48
1:A:291:CYS:HA	1:A:292:SER:CB	2.43	0.48
1:A:229:LEU:HB2	1:A:367:VAL:O	2.14	0.48
1:A:455:ARG:HD3	4:A:673:HOH:O	2.14	0.47
1:A:291:CYS:HB3	1:A:292:SER:HB3	1.97	0.47
1:A:298:ASN:HB3	1:A:328:GLY:HA2	1.96	0.47
1:A:84:GLN:HE22	1:A:307:ARG:HH21	1.62	0.47
1:A:222:PRO:HA	1:A:369:TRP:CZ2	2.50	0.46
1:A:292:SER:C	1:A:294:THR:H	2.20	0.46
1:A:230:PHE:HA	1:A:364:PHE:HE2	1.81	0.45
1:A:294:THR:HG21	4:A:686:HOH:O	2.16	0.45
1:A:142:LYS:HE2	1:A:146:ASP:OD1	2.17	0.45
1:A:407:ASP:OD1	1:A:409:ARG:NH1	2.49	0.44
1:A:371:ASN:C	1:A:371:ASN:HD22	2.21	0.44
1:A:12:THR:OG1	1:A:280:THR:CG2	2.66	0.43
1:A:437:ILE:HG21	1:A:448:ILE:HD11	1.99	0.43
1:A:361:SER:HA	1:A:362:PRO:HA	1.73	0.43
1:A:84:GLN:NE2	1:A:307:ARG:HH21	2.16	0.43
1:A:309:LEU:HB3	1:A:344:LEU:HD22	2.01	0.42
1:A:113:HIS:CD2	4:A:633:HOH:O	2.72	0.42
1:A:167:LYS:HG3	1:A:172:LYS:HB2	2.00	0.42
1:A:289:SER:HB3	3:A:464:GTP:C2	2.53	0.42
1:A:448:ILE:HA	1:A:449:PRO:HD3	1.86	0.42
1:A:440:VAL:HG13	1:A:442:VAL:HG23	2.01	0.42
1:A:291:CYS:O	1:A:294:THR:HG22	2.20	0.42
1:A:247:ARG:HA	1:A:247:ARG:HD3	1.88	0.41
1:A:291:CYS:O	1:A:294:THR:CG2	2.69	0.41
1:A:450:ASN:HD22	1:A:453:ASN:CB	2.34	0.41
1:A:101:CYS:HA	1:A:110:ILE:HD12	2.02	0.41
1:A:291:CYS:CA	1:A:292:SER:CB	2.98	0.41
1:A:39:GLU:HB3	1:A:40:PRO:HD2	2.03	0.41

There are no symmetry-related clashes.

## 5.3 Torsion angles [i](#)

### 5.3.1 Protein backbone [i](#)

In the following table, the Percentiles column shows the percent Ramachandran outliers of the chain as a percentile score with respect to all X-ray entries followed by that with respect to entries of similar resolution.

The Analysed column shows the number of residues for which the backbone conformation was analysed, and the total number of residues.

Mol	Chain	Analysed	Favoured	Allowed	Outliers	Percentiles	
1	A	460/462 (100%)	440 (96%)	17 (4%)	3 (1%)	26	46

All (3) Ramachandran outliers are listed below:

Mol	Chain	Res	Type
1	A	292	SER
1	A	359	ASP
1	A	367	VAL

### 5.3.2 Protein sidechains [i](#)

In the following table, the Percentiles column shows the percent sidechain outliers of the chain as a percentile score with respect to all X-ray entries followed by that with respect to entries of similar resolution.

The Analysed column shows the number of residues for which the sidechain conformation was analysed, and the total number of residues.

Mol	Chain	Analysed	Rotameric	Outliers	Percentiles	
1	A	405/405 (100%)	364 (90%)	41 (10%)	9	17

All (41) residues with a non-rotameric sidechain are listed below:

Mol	Chain	Res	Type
1	A	10	LYS
1	A	17	ILE
1	A	18	ASN
1	A	21	THR
1	A	22	ARG
1	A	37	ASN
1	A	43	LEU
1	A	46	LYS

*Continued on next page...*

*Continued from previous page...*

Mol	Chain	Res	Type
1	A	55	GLU
1	A	56	GLN
1	A	79	LEU
1	A	89	GLU
1	A	94	GLN
1	A	128	ARG
1	A	131	LEU
1	A	145	MET
1	A	150	LEU
1	A	151	ASP
1	A	167	LYS
1	A	187	LEU
1	A	197	THR
1	A	218	TRP
1	A	280	THR
1	A	284	LEU
1	A	294	THR
1	A	317	ILE
1	A	327	TYR
1	A	332	LEU
1	A	342	LEU
1	A	344	LEU
1	A	349	LYS
1	A	359	ASP
1	A	364	PHE
1	A	371	ASN
1	A	383	GLU
1	A	396	ARG
1	A	409	ARG
1	A	417	SER
1	A	435	SER
1	A	440	VAL
1	A	442	VAL

Some sidechains can be flipped to improve hydrogen bonding and reduce clashes. All (9) such sidechains are listed below:

Mol	Chain	Res	Type
1	A	31	HIS
1	A	37	ASN
1	A	56	GLN
1	A	84	GLN
1	A	94	GLN

*Continued on next page...*

*Continued from previous page...*

Mol	Chain	Res	Type
1	A	371	ASN
1	A	412	GLN
1	A	450	ASN
1	A	457	ASN

### 5.3.3 RNA [i](#)

There are no RNA molecules in this entry.

### 5.4 Non-standard residues in protein, DNA, RNA chains [i](#)

There are no non-standard protein/DNA/RNA residues in this entry.

### 5.5 Carbohydrates [i](#)

There are no carbohydrates in this entry.

### 5.6 Ligand geometry [i](#)

Of 2 ligands modelled in this entry, 1 is monoatomic - leaving 1 for Mogul analysis.

In the following table, the Counts columns list the number of bonds (or angles) for which Mogul statistics could be retrieved, the number of bonds (or angles) that are observed in the model and the number of bonds (or angles) that are defined in the chemical component dictionary. The Link column lists molecule types, if any, to which the group is linked. The Z score for a bond length (or angle) is the number of standard deviations the observed value is removed from the expected value. A bond length (or angle) with  $|Z| > 2$  is considered an outlier worth inspection. RMSZ is the root-mean-square of all Z scores of the bond lengths (or angles).

Mol	Type	Chain	Res	Link	Bond lengths			Bond angles		
					Counts	RMSZ	$\# Z  > 2$	Counts	RMSZ	$\# Z  > 2$
3	GTP	A	464	-	25,34,34	1.06	1 (4%)	34,54,54	1.51	3 (8%)

In the following table, the Chirals column lists the number of chiral outliers, the number of chiral centers analysed, the number of these observed in the model and the number defined in the chemical component dictionary. Similar counts are reported in the Torsion and Rings columns. '-' means no outliers of that kind were identified.

Mol	Type	Chain	Res	Link	Chirals	Torsions	Rings
3	GTP	A	464	-	-	0/18/38/38	0/3/3/3

All (1) bond length outliers are listed below:

Mol	Chain	Res	Type	Atoms	Z	Observed(Å)	Ideal(Å)
3	A	464	GTP	C6-N1	3.54	1.39	1.33

All (3) bond angle outliers are listed below:

Mol	Chain	Res	Type	Atoms	Z	Observed(°)	Ideal(°)
3	A	464	GTP	N3-C2-N1	-5.26	119.44	127.44
3	A	464	GTP	C5-C6-N1	-2.88	119.65	123.59
3	A	464	GTP	C6-N1-C2	3.49	120.78	115.94

There are no chirality outliers.

There are no torsion outliers.

There are no ring outliers.

1 monomer is involved in 2 short contacts:

Mol	Chain	Res	Type	Clashes	Symm-Clashes
3	A	464	GTP	2	0

## 5.7 Other polymers [i](#)

There are no such residues in this entry.

## 5.8 Polymer linkage issues [i](#)

There are no chain breaks in this entry.

## 6 Fit of model and data [i](#)

### 6.1 Protein, DNA and RNA chains [i](#)

In the following table, the column labelled ‘#RSRZ> 2’ contains the number (and percentage) of RSRZ outliers, followed by percent RSRZ outliers for the chain as percentile scores relative to all X-ray entries and entries of similar resolution. The OWAB column contains the minimum, median, 95<sup>th</sup> percentile and maximum values of the occupancy-weighted average B-factor per residue. The column labelled ‘Q< 0.9’ lists the number of (and percentage) of residues with an average occupancy less than 0.9.

Mol	Chain	Analysed	<RSRZ>	#RSRZ>2	OWAB(Å <sup>2</sup> )	Q<0.9
1	A	462/462 (100%)	-0.18	11 (2%) 62 66	28, 41, 64, 104	0

All (11) RSRZ outliers are listed below:

Mol	Chain	Res	Type	RSRZ
1	A	361	SER	8.4
1	A	362	PRO	6.1
1	A	360	LYS	5.2
1	A	20	PRO	3.9
1	A	363	CYS	3.8
1	A	365	ASN	3.7
1	A	359	ASP	3.3
1	A	366	GLU	2.8
1	A	367	VAL	2.7
1	A	315	LYS	2.5
1	A	364	PHE	2.3

### 6.2 Non-standard residues in protein, DNA, RNA chains [i](#)

There are no non-standard protein/DNA/RNA residues in this entry.

### 6.3 Carbohydrates [i](#)

There are no carbohydrates in this entry.

### 6.4 Ligands [i](#)

In the following table, the Atoms column lists the number of modelled atoms in the group and the number defined in the chemical component dictionary. LLDF column lists the quality of electron density of the group with respect to its neighbouring residues in protein, DNA or RNA chains.

The B-factors column lists the minimum, median, 95<sup>th</sup> percentile and maximum values of B factors of atoms in the group. The column labelled 'Q< 0.9' lists the number of atoms with occupancy less than 0.9.

Mol	Type	Chain	Res	Atoms	RSCC	RSR	LLDF	B-factors(Å <sup>2</sup> )	Q<0.9
2	NI	A	463	1/1	0.99	0.12	0.23	42,42,42,42	0
3	GTP	A	464	32/32	0.95	0.12	-1.83	53,55,60,60	0

## 6.5 Other polymers [i](#)

There are no such residues in this entry.