



# Full wwPDB X-ray Structure Validation Report ⓘ

Feb 1, 2016 – 07:00 PM GMT

PDB ID : 4NGQ  
Title : Crystal Structure of Glutamate Carboxypeptidase II in a complex with urea-based inhibitor  
Authors : Tykvart, J.; Pachl, P.  
Deposited on : 2013-11-02  
Resolution : 2.08 Å(reported)

This is a Full wwPDB X-ray Structure Validation Report for a publicly released PDB entry.  
We welcome your comments at [validation@mail.wwpdb.org](mailto:validation@mail.wwpdb.org)  
A user guide is available at  
<http://wwpdb.org/validation/2016/XrayValidationReportHelp>  
with specific help available everywhere you see the ⓘ symbol.

---

The following versions of software and data (see [references ⓘ](#)) were used in the production of this report:

MolProbity : 4.02b-467  
Mogul : 1.7 (RC4), CSD as536be (2015)  
Xtriage (Phenix) : 1.9-1692  
EDS : rb-20026688  
Percentile statistics : 20151230.v01 (using entries in the PDB archive December 30th 2015)  
Refmac : 5.8.0135  
CCP4 : 6.5.0  
Ideal geometry (proteins) : Engh & Huber (2001)  
Ideal geometry (DNA, RNA) : Parkinson et al. (1996)  
Validation Pipeline (wwPDB-VP) : trunk26865

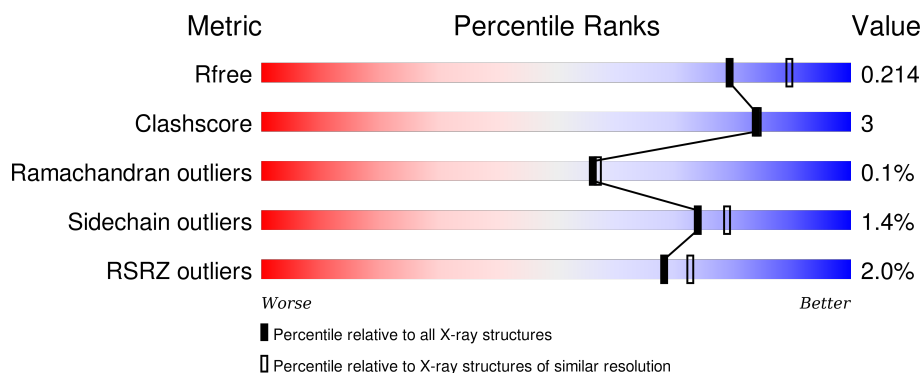
# 1 Overall quality at a glance

The following experimental techniques were used to determine the structure:

## *X-RAY DIFFRACTION*

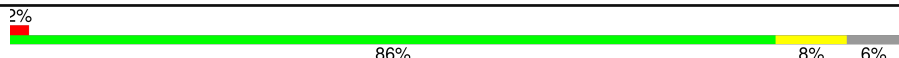
The reported resolution of this entry is 2.08 Å.

Percentile scores (ranging between 0-100) for global validation metrics of the entry are shown in the following graphic. The table shows the number of entries on which the scores are based.



Metric	Whole archive (#Entries)	Similar resolution (#Entries, resolution range(Å))
$R_{free}$	91344	4546 (2.10-2.06)
Clashscore	102246	5101 (2.10-2.06)
Ramachandran outliers	100387	5048 (2.10-2.06)
Sidechain outliers	100360	5049 (2.10-2.06)
RSRZ outliers	91569	4556 (2.10-2.06)

The table below summarises the geometric issues observed across the polymeric chains and their fit to the electron density. The red, orange, yellow and green segments on the lower bar indicate the fraction of residues that contain outliers for  $\geq 3$ , 2, 1 and 0 types of geometric quality criteria. A grey segment represents the fraction of residues that are not modelled. The numeric value for each fraction is indicated below the corresponding segment, with a dot representing fractions  $\leq 5\%$ . The upper red bar (where present) indicates the fraction of residues that have poor fit to the electron density. The numeric value is given above the bar.

Mol	Chain	Length	Quality of chain
1	A	739	

## 2 Entry composition

There are 9 unique types of molecules in this entry. The entry contains 6240 atoms, of which 0 are hydrogens and 0 are deuteriums.

In the tables below, the ZeroOcc column contains the number of atoms modelled with zero occupancy, the AltConf column contains the number of residues with at least one atom in alternate conformation and the Trace column contains the number of residues modelled with at most 2 atoms.

- Molecule 1 is a protein called Glutamate carboxypeptidase 2.

Mol	Chain	Residues	Atoms					ZeroOcc	AltConf	Trace
1	A	694	Total	C	N	O	S	0	6	0
			5514	3545	927	1023	19			

There are 32 discrepancies between the modelled and reference sequences:

Chain	Residue	Modelled	Actual	Comment	Reference
A	12	ARG	-	EXPRESSION TAG	UNP Q04609
A	13	SER	-	EXPRESSION TAG	UNP Q04609
A	14	GLY	-	EXPRESSION TAG	UNP Q04609
A	15	LEU	-	EXPRESSION TAG	UNP Q04609
A	16	ASN	-	EXPRESSION TAG	UNP Q04609
A	17	ASP	-	EXPRESSION TAG	UNP Q04609
A	18	ILE	-	EXPRESSION TAG	UNP Q04609
A	19	PHE	-	EXPRESSION TAG	UNP Q04609
A	20	GLU	-	EXPRESSION TAG	UNP Q04609
A	21	ALA	-	EXPRESSION TAG	UNP Q04609
A	22	GLN	-	EXPRESSION TAG	UNP Q04609
A	23	LYS	-	EXPRESSION TAG	UNP Q04609
A	24	ILE	-	EXPRESSION TAG	UNP Q04609
A	25	GLU	-	EXPRESSION TAG	UNP Q04609
A	26	TRP	-	EXPRESSION TAG	UNP Q04609
A	27	HIS	-	EXPRESSION TAG	UNP Q04609
A	28	GLU	-	EXPRESSION TAG	UNP Q04609
A	29	GLY	-	EXPRESSION TAG	UNP Q04609
A	30	SER	-	EXPRESSION TAG	UNP Q04609
A	31	GLY	-	EXPRESSION TAG	UNP Q04609
A	32	SER	-	EXPRESSION TAG	UNP Q04609
A	33	GLY	-	EXPRESSION TAG	UNP Q04609
A	34	SER	-	EXPRESSION TAG	UNP Q04609
A	35	GLU	-	EXPRESSION TAG	UNP Q04609
A	36	ASN	-	EXPRESSION TAG	UNP Q04609
A	37	LEU	-	EXPRESSION TAG	UNP Q04609
A	38	TYR	-	EXPRESSION TAG	UNP Q04609

*Continued on next page...*

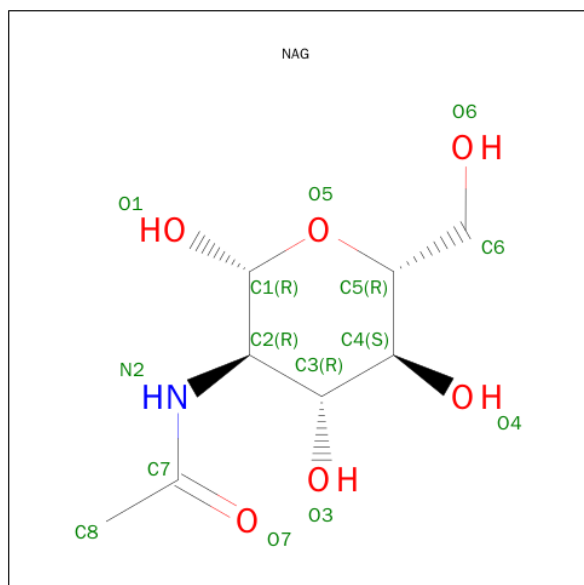
Continued from previous page...

Chain	Residue	Modelled	Actual	Comment	Reference
A	39	PHE	-	EXPRESSION TAG	UNP Q04609
A	40	GLN	-	EXPRESSION TAG	UNP Q04609
A	41	GLY	-	EXPRESSION TAG	UNP Q04609
A	42	ARG	-	EXPRESSION TAG	UNP Q04609
A	43	SER	-	EXPRESSION TAG	UNP Q04609

- Molecule 2 is a polymer of unknown type called SUGAR (2-MER).

Mol	Chain	Residues	Atoms				ZeroOcc	AltConf
2	A	2	Total	C	N	O	0	0
			28	16	2	10		
2	A	2	Total	C	N	O	0	0
			28	16	2	10		
2	A	2	Total	C	N	O	0	0
			28	16	2	10		
2	A	2	Total	C	N	O	0	0
			28	16	2	10		

- Molecule 3 is SUGAR (N-ACETYL-D-GLUCOSAMINE) (three-letter code: NAG) (formula:  $C_8H_{15}NO_6$ ).



Mol	Chain	Residues	Atoms				ZeroOcc	AltConf
3	A	1	Total	C	N	O	0	0
			14	8	1	5		
3	A	1	Total	C	N	O	0	0
			14	8	1	5		

- Molecule 4 is a polymer of unknown type called SUGAR (5-MER).

Mol	Chain	Residues	Atoms				ZeroOcc	AltConf
4	A	5	Total	C	N	O	0	0
			61	34	2	25		

- Molecule 5 is ZINC ION (three-letter code: ZN) (formula: Zn).

Mol	Chain	Residues	Atoms		ZeroOcc	AltConf
5	A	2	Total	Zn	0	0
			2	2		

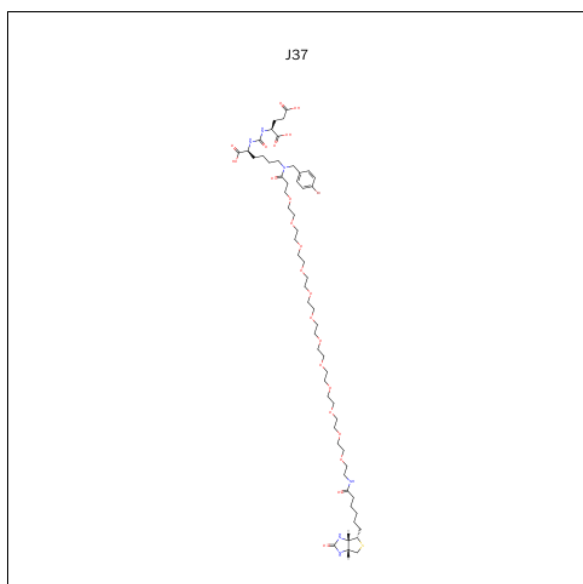
- Molecule 6 is CHLORIDE ION (three-letter code: CL) (formula: Cl).

Mol	Chain	Residues	Atoms		ZeroOcc	AltConf
6	A	1	Total	Cl	0	0
			1	1		

- Molecule 7 is CALCIUM ION (three-letter code: CA) (formula: Ca).

Mol	Chain	Residues	Atoms		ZeroOcc	AltConf
7	A	1	Total	Ca	0	0
			1	1		

- Molecule 8 is N-({(1S)-6-(4-BROMOBENZYL)-1-CARBOXY-7,47-DIOXO-52-[(3AS,4S,6AR)-2-OXOHEXAHYDRO-1H-THIENO[3,4-D]IMIDAZOL-4-YL]-10,13,16,19,22,25,28,31,34,37,40,43-DODECAOXA-6,46-DIAZADOPENTACONT-1-YL}CARBAMOYL)-L-GLUTAMIC ACID (three-letter code: J37) (formula: C<sub>57</sub>H<sub>95</sub>BrN<sub>6</sub>O<sub>22</sub>S).



Mol	Chain	Residues	Atoms					ZeroOcc	AltConf
8	A	1	Total	Br	C	N	O	0	0
			34	1	22	3	8		

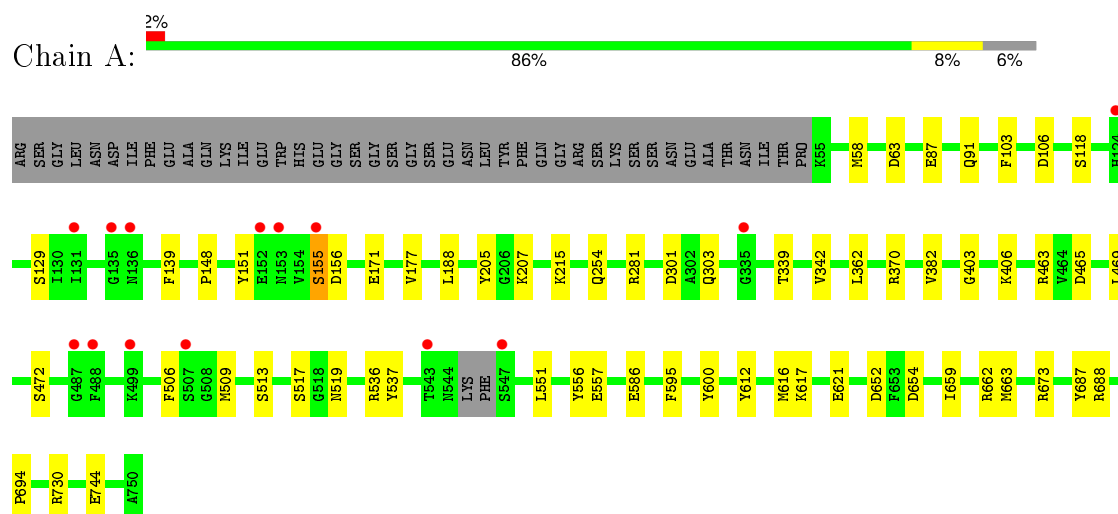
- Molecule 9 is water.

Mol	Chain	Residues	Atoms		ZeroOcc	AltConf
9	A	487	Total	O	0	3
			487	487		

### 3 Residue-property plots [i](#)

These plots are drawn for all protein, RNA and DNA chains in the entry. The first graphic for a chain summarises the proportions of errors displayed in the second graphic. The second graphic shows the sequence view annotated by issues in geometry and electron density. Residues are color-coded according to the number of geometric quality criteria for which they contain at least one outlier: green = 0, yellow = 1, orange = 2 and red = 3 or more. A red dot above a residue indicates a poor fit to the electron density ( $RSRZ > 2$ ). Stretches of 2 or more consecutive residues without any outlier are shown as a green connector. Residues present in the sample, but not in the model, are shown in grey.

- Molecule 1: Glutamate carboxypeptidase 2



## 4 Data and refinement statistics

Property	Value	Source
Space group	I 2 2 2	Depositor
Cell constants a, b, c, $\alpha$ , $\beta$ , $\gamma$	101.09Å 130.35Å 158.78Å 90.00° 90.00° 90.00°	Depositor
Resolution (Å)	46.89 – 2.08 46.89 – 2.08	Depositor EDS
% Data completeness (in resolution range)	99.6 (46.89-2.08) 99.6 (46.89-2.08)	Depositor EDS
$R_{merge}$	0.07	Depositor
$R_{sym}$	(Not available)	Depositor
$\langle I/\sigma(I) \rangle$ <sup>1</sup>	2.78 (at 2.08Å)	Xtriage
Refinement program	REFMAC 5.7.0032	Depositor
R, $R_{free}$	0.167 , 0.213 0.172 , 0.214	Depositor DCC
$R_{free}$ test set	3146 reflections (5.26%)	DCC
Wilson B-factor (Å <sup>2</sup> )	23.4	Xtriage
Anisotropy	0.170	Xtriage
Bulk solvent $k_{sol}$ (e/Å <sup>3</sup> ), $B_{sol}$ (Å <sup>2</sup> )	0.37 , 62.9	EDS
Estimated twinning fraction	No twinning to report.	Xtriage
L-test for twinning <sup>2</sup>	$\langle  L  \rangle = 0.49$ , $\langle L^2 \rangle = 0.33$	Xtriage
Outliers	0 of 62911 reflections	Xtriage
$F_o, F_c$ correlation	0.95	EDS
Total number of atoms	6240	wwPDB-VP
Average B, all atoms (Å <sup>2</sup> )	25.0	wwPDB-VP

Xtriage's analysis on translational NCS is as follows: *The largest off-origin peak in the Patterson function is 3.74% of the height of the origin peak. No significant pseudotranslation is detected.*

<sup>1</sup>Intensities estimated from amplitudes.

<sup>2</sup>Theoretical values of  $\langle |L| \rangle$ ,  $\langle L^2 \rangle$  for acentric reflections are 0.5, 0.375 respectively for untwinned datasets, and 0.333, 0.2 for perfectly twinned datasets.

## 5 Model quality [i](#)

### 5.1 Standard geometry [i](#)

Bond lengths and bond angles in the following residue types are not validated in this section: ZN, BMA, NAG, CL, CA, J37, MAN

The Z score for a bond length (or angle) is the number of standard deviations the observed value is removed from the expected value. A bond length (or angle) with  $|Z| > 5$  is considered an outlier worth inspection. RMSZ is the root-mean-square of all Z scores of the bond lengths (or angles).

Mol	Chain	Bond lengths		Bond angles	
		RMSZ	$\# Z  > 5$	RMSZ	$\# Z  > 5$
1	A	1.02	4/5681 (0.1%)	0.95	10/7703 (0.1%)

All (4) bond length outliers are listed below:

Mol	Chain	Res	Type	Atoms	Z	Observed(Å)	Ideal(Å)
1	A	621	GLU	CD-OE2	-5.75	1.19	1.25
1	A	744	GLU	CD-OE1	5.58	1.31	1.25
1	A	118	SER	CB-OG	5.58	1.49	1.42
1	A	281	ARG	CZ-NH1	-5.43	1.25	1.33

All (10) bond angle outliers are listed below:

Mol	Chain	Res	Type	Atoms	Z	Observed(°)	Ideal(°)
1	A	662	ARG	NE-CZ-NH2	-8.79	115.91	120.30
1	A	370	ARG	NE-CZ-NH1	8.61	124.61	120.30
1	A	106	ASP	CB-CG-OD2	6.80	124.42	118.30
1	A	301	ASP	CB-CG-OD2	6.75	124.38	118.30
1	A	63	ASP	CB-CG-OD1	6.50	124.15	118.30
1	A	730	ARG	NE-CZ-NH2	-6.33	117.14	120.30
1	A	301	ASP	CB-CG-OD1	-6.28	112.65	118.30
1	A	370	ARG	NE-CZ-NH2	-5.81	117.39	120.30
1	A	652	ASP	CB-CA-C	-5.62	99.16	110.40
1	A	106	ASP	CB-CG-OD1	-5.59	113.27	118.30

There are no chirality outliers.

There are no planarity outliers.

## 5.2 Too-close contacts ⓘ

In the following table, the Non-H and H(model) columns list the number of non-hydrogen atoms and hydrogen atoms in the chain respectively. The H(added) column lists the number of hydrogen atoms added and optimized by MolProbity. The Clashes column lists the number of clashes within the asymmetric unit, whereas Symm-Clashes lists symmetry related clashes.

Mol	Chain	Non-H	H(model)	H(added)	Clashes	Symm-Clashes
1	A	5514	0	5342	30	0
2	A	112	0	100	0	0
3	A	28	0	26	1	0
4	A	61	0	52	0	0
5	A	2	0	0	0	0
6	A	1	0	0	0	0
7	A	1	0	0	0	0
8	A	34	0	24	6	0
9	A	487	0	0	8	0
All	All	6240	0	5544	34	0

The all-atom clashscore is defined as the number of clashes found per 1000 atoms (including hydrogen atoms). The all-atom clashscore for this structure is 3.

All (34) close contacts within the same asymmetric unit are listed below, sorted by their clash magnitude.

Atom-1	Atom-2	Interatomic distance (Å)	Clash overlap (Å)
1:A:215:LYS:HE2	9:A:986:HOH:O	1.68	0.92
1:A:465:ASP:OD2	8:A:820:J37:H93	1.77	0.82
8:A:820:J37:H22	8:A:820:J37:H18	1.63	0.79
8:A:820:J37:H22	8:A:820:J37:C10	2.21	0.69
1:A:463:ARG:HD3	8:A:820:J37:BR	2.50	0.67
1:A:513:SER:OG	9:A:1370:HOH:O	2.13	0.66
1:A:472:SER:HB2	9:A:1105:HOH:O	1.95	0.65
1:A:517:SER:HB2	1:A:694:PRO:HG3	1.79	0.64
1:A:612:TYR:CZ	1:A:616:MET:HG3	2.34	0.63
1:A:659:ILE:O	1:A:663[B]:MET:HG3	2.04	0.57
1:A:177:VAL:HG12	1:A:188:LEU:HD21	1.87	0.55
1:A:617:LYS:NZ	9:A:1303:HOH:O	2.41	0.51
1:A:551:LEU:HD22	1:A:556:TYR:HB2	1.93	0.50
8:A:820:J37:H18	8:A:820:J37:C13	2.33	0.50
1:A:205:TYR:CE2	1:A:254:GLN:HB3	2.47	0.49
1:A:362:LEU:HD11	1:A:406:LYS:HG3	1.94	0.49
1:A:688[B]:ARG:CZ	9:A:1034:HOH:O	2.62	0.47
1:A:87:GLU:OE1	1:A:91:GLN:NE2	2.46	0.47

*Continued on next page...*

Continued from previous page...

Atom-1	Atom-2	Interatomic distance (Å)	Clash overlap (Å)
1:A:659:ILE:HG22	1:A:663[B]:MET:CE	2.45	0.46
1:A:148:PRO:HG2	1:A:151:TYR:CD1	2.52	0.45
1:A:536:ARG:NH1	8:A:820:J37:H92	2.31	0.44
1:A:103:PHE:O	1:A:403:GLY:HA3	2.18	0.44
1:A:129:SER:HA	1:A:139:PHE:O	2.17	0.43
1:A:654:ASP:OD1	1:A:654:ASP:C	2.57	0.43
1:A:506:PHE:CB	1:A:509:MET:HG3	2.48	0.43
1:A:155:SER:O	1:A:156:ASP:HB2	2.19	0.43
1:A:58:MET:HE1	1:A:586:GLU:HG2	2.01	0.42
1:A:151:TYR:HA	9:A:936:HOH:O	2.19	0.42
1:A:58:MET:CE	1:A:586:GLU:HG2	2.50	0.42
3:A:808:NAG:H61	9:A:1312:HOH:O	2.20	0.41
1:A:469:LEU:O	1:A:595:PHE:HA	2.20	0.41
1:A:207:LYS:NZ	9:A:1267:HOH:O	2.48	0.40
1:A:687:TYR:CZ	1:A:694:PRO:HG2	2.57	0.40
1:A:171:GLU:HA	1:A:342:VAL:O	2.21	0.40

There are no symmetry-related clashes.

## 5.3 Torsion angles [i](#)

### 5.3.1 Protein backbone [i](#)

In the following table, the Percentiles column shows the percent Ramachandran outliers of the chain as a percentile score with respect to all X-ray entries followed by that with respect to entries of similar resolution.

The Analysed column shows the number of residues for which the backbone conformation was analysed, and the total number of residues.

Mol	Chain	Analysed	Favoured	Allowed	Outliers	Percentiles	
1	A	696/739 (94%)	677 (97%)	18 (3%)	1 (0%)	56	57

All (1) Ramachandran outliers are listed below:

Mol	Chain	Res	Type
1	A	382	VAL

### 5.3.2 Protein sidechains ⓘ

In the following table, the Percentiles column shows the percent sidechain outliers of the chain as a percentile score with respect to all X-ray entries followed by that with respect to entries of similar resolution.

The Analysed column shows the number of residues for which the sidechain conformation was analysed, and the total number of residues.

Mol	Chain	Analysed	Rotameric	Outliers	Percentiles	
1	A	583/629 (93%)	575 (99%)	8 (1%)	74	79

All (8) residues with a non-rotameric sidechain are listed below:

Mol	Chain	Res	Type
1	A	155	SER
1	A	303	GLN
1	A	339	THR
1	A	519	ASN
1	A	537	TYR
1	A	557	GLU
1	A	600	TYR
1	A	673	ARG

Some sidechains can be flipped to improve hydrogen bonding and reduce clashes. There are no such sidechains identified.

### 5.3.3 RNA ⓘ

There are no RNA molecules in this entry.

## 5.4 Non-standard residues in protein, DNA, RNA chains ⓘ

There are no non-standard protein/DNA/RNA residues in this entry.

## 5.5 Carbohydrates ⓘ

13 carbohydrates are modelled in this entry.

In the following table, the Counts columns list the number of bonds (or angles) for which Mogul statistics could be retrieved, the number of bonds (or angles) that are observed in the model and the number of bonds (or angles) that are defined in the chemical component dictionary. The Link column lists molecule types, if any, to which the group is linked. The Z score for a bond length

(or angle) is the number of standard deviations the observed value is removed from the expected value. A bond length (or angle) with  $|Z| > 2$  is considered an outlier worth inspection. RMSZ is the root-mean-square of all Z scores of the bond lengths (or angles).

Mol	Type	Chain	Res	Link	Bond lengths			Bond angles		
					Counts	RMSZ	$\# Z  > 2$	Counts	RMSZ	$\# Z  > 2$
2	NAG	A	801	1,2	14,14,15	0.86	0	15,19,21	1.65	2 (13%)
2	NAG	A	802	2	14,14,15	0.70	0	15,19,21	2.71	5 (33%)
2	NAG	A	803	1,2	14,14,15	1.02	0	15,19,21	2.11	5 (33%)
2	NAG	A	804	2	14,14,15	0.70	0	15,19,21	1.41	3 (20%)
2	NAG	A	805	1,2	14,14,15	0.79	0	15,19,21	1.19	1 (6%)
2	NAG	A	806	2	14,14,15	0.60	0	15,19,21	1.69	4 (26%)
2	NAG	A	809	1,2	14,14,15	1.11	2 (14%)	15,19,21	2.03	6 (40%)
2	NAG	A	810	2	14,14,15	1.03	1 (7%)	15,19,21	2.13	5 (33%)
4	NAG	A	811	1,4	14,14,15	1.08	1 (7%)	15,19,21	1.51	2 (13%)
4	NAG	A	812	4	14,14,15	0.84	1 (7%)	15,19,21	1.63	5 (33%)
4	BMA	A	813	4	11,11,12	0.81	0	14,15,17	0.92	1 (7%)
4	MAN	A	814	4	11,11,12	1.69	2 (18%)	14,15,17	2.50	5 (35%)
4	MAN	A	815	4	11,11,12	1.04	1 (9%)	14,15,17	1.53	2 (14%)

In the following table, the Chirals column lists the number of chiral outliers, the number of chiral centers analysed, the number of these observed in the model and the number defined in the chemical component dictionary. Similar counts are reported in the Torsion and Rings columns. '-' means no outliers of that kind were identified.

Mol	Type	Chain	Res	Link	Chirals	Torsions	Rings
2	NAG	A	801	1,2	-	0/6/23/26	0/1/1/1
2	NAG	A	802	2	-	0/6/23/26	0/1/1/1
2	NAG	A	803	1,2	-	0/6/23/26	0/1/1/1
2	NAG	A	804	2	-	0/6/23/26	0/1/1/1
2	NAG	A	805	1,2	-	0/6/23/26	0/1/1/1
2	NAG	A	806	2	-	0/6/23/26	0/1/1/1
2	NAG	A	809	1,2	-	0/6/23/26	0/1/1/1
2	NAG	A	810	2	-	0/6/23/26	0/1/1/1
4	NAG	A	811	1,4	-	0/6/23/26	0/1/1/1
4	NAG	A	812	4	-	0/6/23/26	0/1/1/1
4	BMA	A	813	4	-	0/2/19/22	0/1/1/1
4	MAN	A	814	4	-	0/2/19/22	0/1/1/1
4	MAN	A	815	4	-	0/2/19/22	0/1/1/1

All (8) bond length outliers are listed below:

Mol	Chain	Res	Type	Atoms	Z	Observed(Å)	Ideal(Å)
4	A	814	MAN	O5-C1	-4.50	1.36	1.43
4	A	815	MAN	O5-C1	-2.50	1.39	1.43
4	A	811	NAG	C2-N2	-2.31	1.42	1.46
2	A	810	NAG	C1-C2	-2.30	1.49	1.52
2	A	809	NAG	O3-C3	-2.29	1.37	1.43
4	A	812	NAG	O5-C1	-2.13	1.40	1.43
2	A	809	NAG	O7-C7	-2.07	1.18	1.23
4	A	814	MAN	C1-C2	-2.07	1.47	1.52

All (46) bond angle outliers are listed below:

Mol	Chain	Res	Type	Atoms	Z	Observed(°)	Ideal(°)
4	A	814	MAN	C1-C2-C3	-5.71	102.78	109.54
2	A	810	NAG	C6-C5-C4	-3.61	104.11	113.02
4	A	815	MAN	C1-O5-C5	-3.60	107.68	112.25
2	A	809	NAG	C3-C4-C5	-3.45	104.18	110.20
4	A	814	MAN	C1-O5-C5	-3.44	107.88	112.25
2	A	802	NAG	O3-C3-C4	-3.24	103.04	110.34
2	A	810	NAG	C2-N2-C7	-3.16	118.97	123.04
2	A	809	NAG	O3-C3-C2	-3.11	102.94	109.11
2	A	810	NAG	C4-C3-C2	-2.64	107.13	111.23
2	A	809	NAG	C1-O5-C5	-2.60	108.95	112.25
4	A	812	NAG	O4-C4-C5	-2.59	102.39	109.24
4	A	812	NAG	C3-C2-N2	-2.54	104.48	110.56
4	A	812	NAG	C3-C4-C5	-2.42	105.98	110.20
2	A	809	NAG	O7-C7-C8	-2.42	117.62	122.06
2	A	803	NAG	O3-C3-C4	-2.39	104.95	110.34
2	A	810	NAG	O6-C6-C5	-2.33	103.62	111.33
2	A	802	NAG	O6-C6-C5	-2.33	103.62	111.33
2	A	802	NAG	O3-C3-C2	-2.32	104.52	109.11
2	A	806	NAG	C3-C4-C5	-2.29	106.20	110.20
2	A	801	NAG	O7-C7-C8	-2.25	117.92	122.06
4	A	813	BMA	O6-C6-C5	-2.22	103.98	111.33
2	A	802	NAG	C6-C5-C4	-2.15	107.71	113.02
2	A	809	NAG	O4-C4-C3	-2.14	105.52	110.34
2	A	806	NAG	O7-C7-C8	-2.08	118.24	122.06
4	A	811	NAG	O7-C7-C8	-2.05	118.29	122.06
4	A	812	NAG	C4-C3-C2	-2.03	108.07	111.23
4	A	814	MAN	O5-C5-C6	2.06	111.80	107.35
4	A	815	MAN	O5-C5-C6	2.12	111.94	107.35
2	A	804	NAG	O5-C5-C6	2.15	112.01	107.35
2	A	805	NAG	C1-O5-C5	2.41	115.31	112.25
2	A	804	NAG	C1-O5-C5	2.50	115.42	112.25

*Continued on next page...*

Continued from previous page...

Mol	Chain	Res	Type	Atoms	Z	Observed(°)	Ideal(°)
2	A	803	NAG	C4-C3-C2	2.60	115.28	111.23
2	A	803	NAG	C6-C5-C4	2.67	119.60	113.02
4	A	812	NAG	O3-C3-C4	2.72	116.46	110.34
2	A	804	NAG	O4-C4-C5	2.85	116.80	109.24
2	A	806	NAG	O4-C4-C5	3.09	117.42	109.24
2	A	809	NAG	C8-C7-N2	3.13	122.10	116.11
2	A	806	NAG	C1-O5-C5	3.51	116.70	112.25
4	A	814	MAN	O3-C3-C2	3.63	116.56	110.00
2	A	803	NAG	O5-C5-C6	3.70	115.37	107.35
4	A	814	MAN	O5-C1-C2	3.71	116.88	110.86
2	A	801	NAG	O5-C5-C6	3.80	115.57	107.35
2	A	803	NAG	O6-C6-C5	4.26	125.41	111.33
4	A	811	NAG	C1-O5-C5	4.44	117.88	112.25
2	A	810	NAG	C1-O5-C5	5.03	118.63	112.25
2	A	802	NAG	C1-O5-C5	8.66	123.24	112.25

There are no chirality outliers.

There are no torsion outliers.

There are no ring outliers.

No monomer is involved in short contacts.

## 5.6 Ligand geometry ⓘ

Of 7 ligands modelled in this entry, 4 are monoatomic - leaving 3 for Mogul analysis.

In the following table, the Counts columns list the number of bonds (or angles) for which Mogul statistics could be retrieved, the number of bonds (or angles) that are observed in the model and the number of bonds (or angles) that are defined in the chemical component dictionary. The Link column lists molecule types, if any, to which the group is linked. The Z score for a bond length (or angle) is the number of standard deviations the observed value is removed from the expected value. A bond length (or angle) with  $|Z| > 2$  is considered an outlier worth inspection. RMSZ is the root-mean-square of all Z scores of the bond lengths (or angles).

Mol	Type	Chain	Res	Link	Bond lengths			Bond angles		
					Counts	RMSZ	# Z  > 2	Counts	RMSZ	# Z  > 2
3	NAG	A	807	1	14,14,15	0.53	0	15,19,21	1.76	4 (26%)
3	NAG	A	808	1	14,14,15	0.84	1 (7%)	15,19,21	3.51	8 (53%)
8	J37	A	820	5	25,34,89	1.07	1 (4%)	29,44,106	1.56	6 (20%)

In the following table, the Chirals column lists the number of chiral outliers, the number of chiral

centers analysed, the number of these observed in the model and the number defined in the chemical component dictionary. Similar counts are reported in the Torsion and Rings columns. '-' means no outliers of that kind were identified.

Mol	Type	Chain	Res	Link	Chirals	Torsions	Rings
3	NAG	A	807	1	-	0/6/23/26	0/1/1/1
3	NAG	A	808	1	-	0/6/23/26	0/1/1/1
8	J37	A	820	5	-	1/28/38/107	0/1/1/3

All (2) bond length outliers are listed below:

Mol	Chain	Res	Type	Atoms	Z	Observed(Å)	Ideal(Å)
8	A	820	J37	C3-N1	-3.00	1.42	1.46
3	A	808	NAG	O5-C1	-2.10	1.40	1.43

All (18) bond angle outliers are listed below:

Mol	Chain	Res	Type	Atoms	Z	Observed(°)	Ideal(°)
3	A	808	NAG	O3-C3-C4	-6.56	95.56	110.34
3	A	808	NAG	C6-C5-C4	-4.07	102.98	113.02
3	A	808	NAG	O7-C7-C8	-3.76	115.16	122.06
3	A	807	NAG	O3-C3-C2	-3.02	103.13	109.11
8	A	820	J37	C55-C54-C53	-2.82	116.20	121.41
3	A	807	NAG	O7-C7-C8	-2.01	118.38	122.06
3	A	808	NAG	C3-C2-N2	2.25	115.94	110.56
8	A	820	J37	C50-C51-C52	2.26	125.06	120.78
8	A	820	J37	C11-N2-C12	2.29	127.70	120.77
3	A	808	NAG	C8-C7-N2	2.37	120.63	116.11
8	A	820	J37	C13-C12-N2	2.47	122.45	118.00
3	A	808	NAG	O4-C4-C3	2.72	116.46	110.34
8	A	820	J37	C56-C55-C54	2.74	123.15	119.17
3	A	808	NAG	O3-C3-C2	2.91	114.87	109.11
3	A	807	NAG	O5-C5-C6	2.95	113.74	107.35
8	A	820	J37	BR-C54-C53	3.72	125.16	119.28
3	A	807	NAG	C1-O5-C5	4.06	117.41	112.25
3	A	808	NAG	C1-O5-C5	9.00	123.67	112.25

There are no chirality outliers.

All (1) torsion outliers are listed below:

Mol	Chain	Res	Type	Atoms
8	A	820	J37	C10-C11-N2-C12

There are no ring outliers.

2 monomers are involved in 7 short contacts:

Mol	Chain	Res	Type	Clashes	Symm-Clashes
3	A	808	NAG	1	0
8	A	820	J37	6	0

## 5.7 Other polymers [i](#)

There are no such residues in this entry.

## 5.8 Polymer linkage issues [i](#)

There are no chain breaks in this entry.

## 6 Fit of model and data [i](#)

### 6.1 Protein, DNA and RNA chains [i](#)

In the following table, the column labelled ‘#RSRZ> 2’ contains the number (and percentage) of RSRZ outliers, followed by percent RSRZ outliers for the chain as percentile scores relative to all X-ray entries and entries of similar resolution. The OWAB column contains the minimum, median, 95<sup>th</sup> percentile and maximum values of the occupancy-weighted average B-factor per residue. The column labelled ‘Q< 0.9’ lists the number of (and percentage) of residues with an average occupancy less than 0.9.

Mol	Chain	Analysed	<RSRZ>	#RSRZ>2	OWAB(Å <sup>2</sup> )	Q<0.9
1	A	694/739 (93%)	-0.23	14 (2%) 68 73	12, 22, 44, 78	0

All (14) RSRZ outliers are listed below:

Mol	Chain	Res	Type	RSRZ
1	A	124	HIS	3.4
1	A	507	SER	3.4
1	A	543	THR	3.4
1	A	135	GLY	3.1
1	A	153	ASN	3.0
1	A	487	GLY	2.8
1	A	547	SER	2.5
1	A	335	GLY	2.5
1	A	136	ASN	2.4
1	A	131	ILE	2.3
1	A	488	PHE	2.2
1	A	499	LYS	2.1
1	A	155	SER	2.1
1	A	152	GLU	2.0

### 6.2 Non-standard residues in protein, DNA, RNA chains [i](#)

There are no non-standard protein/DNA/RNA residues in this entry.

### 6.3 Carbohydrates [i](#)

In the following table, the Atoms column lists the number of modelled atoms in the group and the number defined in the chemical component dictionary. LLDF column lists the quality of electron density of the group with respect to its neighbouring residues in protein, DNA or RNA chains. The B-factors column lists the minimum, median, 95<sup>th</sup> percentile and maximum values of B factors

of atoms in the group. The column labelled 'Q< 0.9' lists the number of atoms with occupancy less than 0.9.

Mol	Type	Chain	Res	Atoms	RSCC	RSR	LLDF	B-factors( $\text{\AA}^2$ )	Q<0.9
4	MAN	A	814	11/12	0.94	0.13	1.70	39,43,44,48	0
4	NAG	A	811	14/15	0.94	0.08	0.75	16,25,40,45	0
2	NAG	A	805	14/15	0.87	0.15	0.69	32,37,43,47	0
2	NAG	A	801	14/15	0.94	0.15	-	28,35,41,47	0
4	NAG	A	812	14/15	0.93	0.15	-	36,43,50,59	0
2	NAG	A	802	14/15	0.82	0.34	-	35,54,61,64	0
4	BMA	A	813	11/12	0.93	0.13	-	40,43,46,46	0
2	NAG	A	806	14/15	0.81	0.28	-	52,54,63,67	0
4	MAN	A	815	11/12	0.80	0.22	-	44,56,65,68	0
2	NAG	A	810	14/15	0.91	0.15	-	33,37,45,55	0
2	NAG	A	809	14/15	0.94	0.14	-	26,28,31,32	0
2	NAG	A	804	14/15	0.73	0.37	-	64,68,73,78	0
2	NAG	A	803	14/15	0.78	0.30	-	41,49,66,68	0

## 6.4 Ligands ⓘ

In the following table, the Atoms column lists the number of modelled atoms in the group and the number defined in the chemical component dictionary. LLDF column lists the quality of electron density of the group with respect to its neighbouring residues in protein, DNA or RNA chains. The B-factors column lists the minimum, median, 95<sup>th</sup> percentile and maximum values of B factors of atoms in the group. The column labelled 'Q< 0.9' lists the number of atoms with occupancy less than 0.9.

Mol	Type	Chain	Res	Atoms	RSCC	RSR	LLDF	B-factors( $\text{\AA}^2$ )	Q<0.9
7	CA	A	819	1/1	1.00	0.10	0.65	13,13,13,13	0
8	J37	A	820	34/87	0.95	0.15	0.45	13,19,59,62	0
6	CL	A	818	1/1	1.00	0.12	-0.56	17,17,17,17	0
5	ZN	A	817	1/1	1.00	0.08	-0.80	17,17,17,17	0
5	ZN	A	816	1/1	1.00	0.07	-1.39	17,17,17,17	0
3	NAG	A	807	14/15	0.87	0.27	-	52,61,68,68	0
3	NAG	A	808	14/15	0.89	0.11	-	32,44,54,61	0

## 6.5 Other polymers ⓘ

There are no such residues in this entry.