



# Full wwPDB X-ray Structure Validation Report ⓘ

Jan 31, 2016 – 09:05 PM GMT

PDB ID : 1NHZ  
Title : Crystal Structure of the Antagonist Form of Glucocorticoid Receptor  
Authors : Kauppi, B.; Jakob, C.; Farnegardh, M.; Yang, J.; Ahola, H.; Alarcon, M.; Calles, K.; Engstrom, O.; Harlan, J.; Muchmore, S.; Ramqvist, A.-K.; Thorell, S.; Ohman, L.; Greer, J.; Gustafsson, J.-A.; Carlstedt-Duke, J.; Carlquist, M.  
Deposited on : 2002-12-20  
Resolution : 2.30 Å(reported)

This is a Full wwPDB X-ray Structure Validation Report for a publicly released PDB entry.  
We welcome your comments at [validation@mail.wwpdb.org](mailto:validation@mail.wwpdb.org)  
A user guide is available at  
<http://wwpdb.org/validation/2016/XrayValidationReportHelp>  
with specific help available everywhere you see the ⓘ symbol.

---

The following versions of software and data (see [references ⓘ](#)) were used in the production of this report:

MolProbity : 4.02b-467  
Mogul : 1.7 (RC4), CSD as536be (2015)  
Xtriage (Phenix) : 1.9-1692  
EDS : rb-20026688  
Percentile statistics : 20151230.v01 (using entries in the PDB archive December 30th 2015)  
Refmac : 5.8.0135  
CCP4 : 6.5.0  
Ideal geometry (proteins) : Engh & Huber (2001)  
Ideal geometry (DNA, RNA) : Parkinson et al. (1996)  
Validation Pipeline (wwPDB-VP) : trunk26865

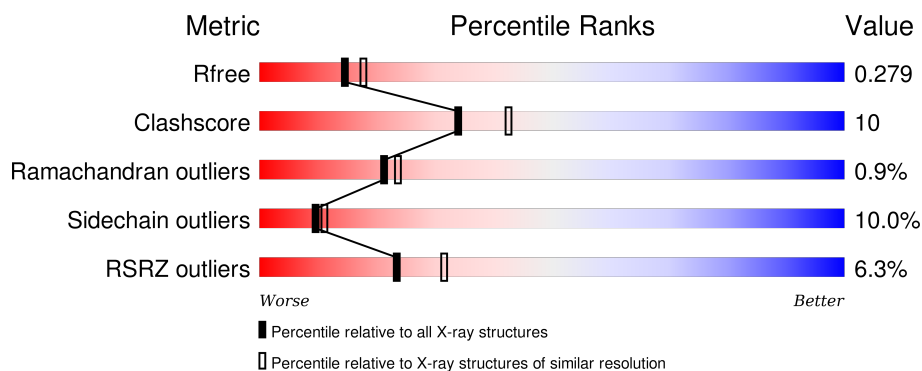
# 1 Overall quality at a glance

The following experimental techniques were used to determine the structure:

## *X-RAY DIFFRACTION*

The reported resolution of this entry is 2.30 Å.

Percentile scores (ranging between 0-100) for global validation metrics of the entry are shown in the following graphic. The table shows the number of entries on which the scores are based.



Metric	Whole archive (#Entries)	Similar resolution (#Entries, resolution range(Å))
$R_{free}$	91344	3852 (2.30-2.30)
Clashscore	102246	4452 (2.30-2.30)
Ramachandran outliers	100387	4410 (2.30-2.30)
Sidechain outliers	100360	4409 (2.30-2.30)
RSRZ outliers	91569	3857 (2.30-2.30)

The table below summarises the geometric issues observed across the polymeric chains and their fit to the electron density. The red, orange, yellow and green segments on the lower bar indicate the fraction of residues that contain outliers for  $\geq 3$ , 2, 1 and 0 types of geometric quality criteria. A grey segment represents the fraction of residues that are not modelled. The numeric value for each fraction is indicated below the corresponding segment, with a dot representing fractions  $\leq 5\%$ . The upper red bar (where present) indicates the fraction of residues that have poor fit to the electron density. The numeric value is given above the bar.

Mol	Chain	Length	Quality of chain
1	A	280	

The following table lists non-polymeric compounds, carbohydrate monomers and non-standard residues in protein, DNA, RNA chains that are outliers for geometric or electron-density-fit criteria:

Mol	Type	Chain	Res	Chirality	Geometry	Clashes	Electron density
3	HEZ	A	901	-	-	-	X

*Continued on next page...*

*Continued from previous page...*

Mol	Type	Chain	Res	Chirality	Geometry	Clashes	Electron density
3	HEZ	A	903	-	-	-	X

## 2 Entry composition [i](#)

There are 4 unique types of molecules in this entry. The entry contains 2136 atoms, of which 0 are hydrogens and 0 are deuteriums.

In the tables below, the ZeroOcc column contains the number of atoms modelled with zero occupancy, the AltConf column contains the number of residues with at least one atom in alternate conformation and the Trace column contains the number of residues modelled with at most 2 atoms.

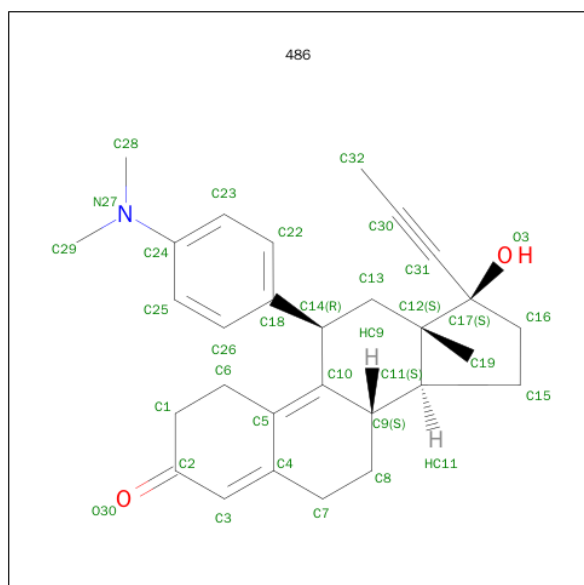
- Molecule 1 is a protein called GLUCOCORTICOID RECEPTOR.

Mol	Chain	Residues	Atoms					ZeroOcc	AltConf	Trace
			Total	C	N	O	S			
1	A	239	1952	1257	320	358	17	0	0	0

There are 5 discrepancies between the modelled and reference sequences:

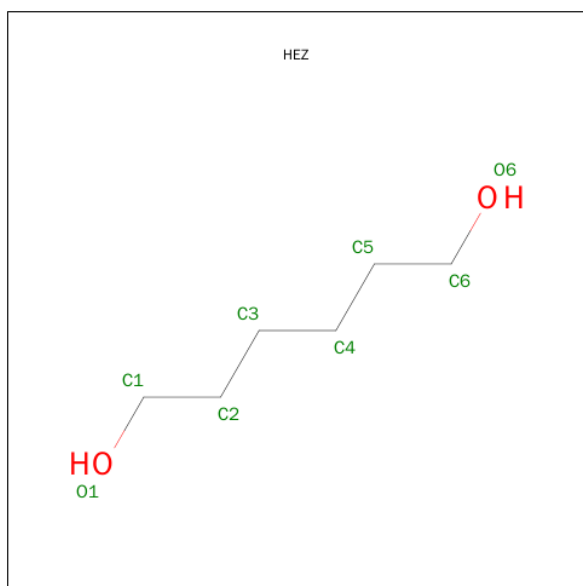
Chain	Residue	Modelled	Actual	Comment	Reference
A	498	GLY	-	CLONING ARTIFACT	UNP P04150
A	499	SER	-	CLONING ARTIFACT	UNP P04150
A	517	ASP	ASN	ENGINEERED	UNP P04150
A	602	SER	PHE	ENGINEERED	UNP P04150
A	638	ASP	CYS	ENGINEERED	UNP P04150

- Molecule 2 is 11-(4-DIMETHYLAMINO-PHENYL)-17-HYDROXY-13-METHYL-17-PRO P-1-YNYL-1,2,6,7,8,11,12,13,14,15,16,17-DODEC AHYDRO-CYCLOPENTA[A]PHENAN THREN-3-ONE (three-letter code: 486) (formula:  $C_{29}H_{35}NO_2$ ).



Mol	Chain	Residues	Atoms				ZeroOcc	AltConf
2	A	1	Total	C	N	O	0	0
			32	29	1	2		

- Molecule 3 is HEXANE-1,6-DIOL (three-letter code: HEZ) (formula:  $C_6H_{14}O_2$ ).



Mol	Chain	Residues	Atoms			ZeroOcc	AltConf
3	A	1	Total	C	O	0	0
			8	6	2		
3	A	1	Total	C	O	0	0
			8	6	2		
3	A	1	Total	C	O	0	0
			8	6	2		

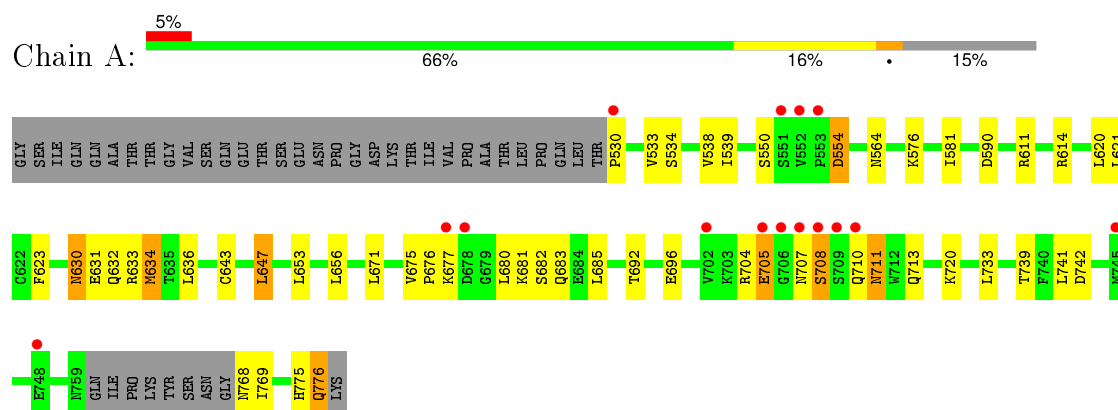
- Molecule 4 is water.

Mol	Chain	Residues	Atoms		ZeroOcc	AltConf
4	A	128	Total	O	0	0
			128	128		

### 3 Residue-property plots [i](#)

These plots are drawn for all protein, RNA and DNA chains in the entry. The first graphic for a chain summarises the proportions of errors displayed in the second graphic. The second graphic shows the sequence view annotated by issues in geometry and electron density. Residues are color-coded according to the number of geometric quality criteria for which they contain at least one outlier: green = 0, yellow = 1, orange = 2 and red = 3 or more. A red dot above a residue indicates a poor fit to the electron density ( $RSRZ > 2$ ). Stretches of 2 or more consecutive residues without any outlier are shown as a green connector. Residues present in the sample, but not in the model, are shown in grey.

#### • Molecule 1: GLUCOCORTICOID RECEPTOR



## 4 Data and refinement statistics

Property	Value	Source
Space group	P 21 21 2	Depositor
Cell constants a, b, c, $\alpha$ , $\beta$ , $\gamma$	74.86 Å 109.76 Å 39.26 Å 90.00° 90.00° 90.00°	Depositor
Resolution (Å)	62.02 – 2.30 39.26 – 2.30	Depositor EDS
% Data completeness (in resolution range)	98.7 (62.02-2.30) 98.7 (39.26-2.30)	Depositor EDS
$R_{merge}$	0.04	Depositor
$R_{sym}$	0.04	Depositor
$\langle I/\sigma(I) \rangle$ <sup>1</sup>	11.09 (at 2.29 Å)	Xtriage
Refinement program	REFMAC 5.1.19	Depositor
R, $R_{free}$	0.204 , 0.276 0.221 , 0.279	Depositor DCC
$R_{free}$ test set	743 reflections (5.28%)	DCC
Wilson B-factor (Å <sup>2</sup> )	31.2	Xtriage
Anisotropy	0.098	Xtriage
Bulk solvent $k_{sol}$ (e/Å <sup>3</sup> ), $B_{sol}$ (Å <sup>2</sup> )	0.36 , 52.6	EDS
Estimated twinning fraction	No twinning to report.	Xtriage
L-test for twinning <sup>2</sup>	$\langle  L  \rangle = 0.48$ , $\langle L^2 \rangle = 0.31$	Xtriage
Outliers	0 of 14815 reflections	Xtriage
$F_o, F_c$ correlation	0.93	EDS
Total number of atoms	2136	wwPDB-VP
Average B, all atoms (Å <sup>2</sup> )	18.0	wwPDB-VP

Xtriage's analysis on translational NCS is as follows: *The largest off-origin peak in the Patterson function is 7.68% of the height of the origin peak. No significant pseudotranslation is detected.*

<sup>1</sup>Intensities estimated from amplitudes.

<sup>2</sup>Theoretical values of  $\langle |L| \rangle$ ,  $\langle L^2 \rangle$  for acentric reflections are 0.5, 0.375 respectively for untwinned datasets, and 0.333, 0.2 for perfectly twinned datasets.

## 5 Model quality [i](#)

### 5.1 Standard geometry [i](#)

Bond lengths and bond angles in the following residue types are not validated in this section: 486, HEZ

The Z score for a bond length (or angle) is the number of standard deviations the observed value is removed from the expected value. A bond length (or angle) with  $|Z| > 5$  is considered an outlier worth inspection. RMSZ is the root-mean-square of all Z scores of the bond lengths (or angles).

Mol	Chain	Bond lengths		Bond angles	
		RMSZ	$\# Z  > 5$	RMSZ	$\# Z  > 5$
1	A	0.78	0/1993	0.87	2/2693 (0.1%)

There are no bond length outliers.

All (2) bond angle outliers are listed below:

Mol	Chain	Res	Type	Atoms	Z	Observed( $^{\circ}$ )	Ideal( $^{\circ}$ )
1	A	554	ASP	CB-CG-OD2	6.43	124.09	118.30
1	A	611	ARG	NE-CZ-NH1	5.35	122.97	120.30

There are no chirality outliers.

There are no planarity outliers.

### 5.2 Too-close contacts [i](#)

In the following table, the Non-H and H(model) columns list the number of non-hydrogen atoms and hydrogen atoms in the chain respectively. The H(added) column lists the number of hydrogen atoms added and optimized by MolProbity. The Clashes column lists the number of clashes within the asymmetric unit, whereas Symm-Clashes lists symmetry related clashes.

Mol	Chain	Non-H	H(model)	H(added)	Clashes	Symm-Clashes
1	A	1952	0	1965	41	0
2	A	32	0	35	2	0
3	A	24	0	42	2	0
4	A	128	0	0	4	1
All	All	2136	0	2042	41	1

The all-atom clashscore is defined as the number of clashes found per 1000 atoms (including hydrogen atoms). The all-atom clashscore for this structure is 10.



All (41) close contacts within the same asymmetric unit are listed below, sorted by their clash magnitude.

Atom-1	Atom-2	Interatomic distance (Å)	Clash overlap (Å)
1:A:776:GLN:HE21	1:A:776:GLN:N	1.64	0.96
1:A:708:SER:HA	1:A:711:ASN:OD1	1.66	0.93
1:A:704:ARG:O	1:A:705:GLU:HB2	1.72	0.89
1:A:775:HIS:C	1:A:776:GLN:HE21	1.90	0.75
1:A:739:THR:HG22	1:A:742:ASP:CG	2.13	0.70
1:A:708:SER:N	4:A:40:HOH:O	2.31	0.63
1:A:634:MET:HE1	1:A:643:CYS:SG	2.38	0.63
1:A:564:ASN:ND2	4:A:68:HOH:O	2.29	0.63
1:A:530:PRO:N	4:A:114:HOH:O	2.31	0.62
1:A:776:GLN:NE2	1:A:776:GLN:N	2.43	0.59
1:A:705:GLU:HA	1:A:705:GLU:OE2	2.03	0.57
1:A:621:LEU:HG	1:A:647:LEU:HD13	1.87	0.54
1:A:733:LEU:HD11	3:A:902:HEZ:H52	1.89	0.53
1:A:590:ASP:OD2	1:A:681:LYS:NZ	2.29	0.52
1:A:739:THR:CG2	1:A:742:ASP:H	2.23	0.52
1:A:630:ASN:ND2	1:A:633:ARG:H	2.09	0.51
1:A:633:ARG:HA	1:A:636:LEU:HD13	1.93	0.50
1:A:630:ASN:HD22	1:A:630:ASN:C	2.15	0.49
1:A:623:PHE:CD1	2:A:800:486:C1	2.96	0.48
1:A:720:LYS:HG2	1:A:775:HIS:CD2	2.49	0.48
1:A:739:THR:HG23	1:A:742:ASP:H	1.79	0.47
1:A:623:PHE:CD1	2:A:800:486:HC12	2.50	0.47
1:A:534:SER:O	1:A:538:VAL:HG13	2.14	0.47
1:A:680:LEU:H	1:A:683:GLN:NE2	2.12	0.46
1:A:634:MET:HE3	1:A:634:MET:HA	1.98	0.46
1:A:705:GLU:OE2	1:A:705:GLU:CA	2.64	0.45
1:A:680:LEU:H	1:A:683:GLN:HE21	1.63	0.45
1:A:675:VAL:HG13	1:A:676:PRO:HD2	1.97	0.45
1:A:620:LEU:HD22	1:A:630:ASN:HA	1.97	0.45
1:A:675:VAL:HG11	1:A:683:GLN:HE22	1.83	0.44
1:A:634:MET:HE1	1:A:643:CYS:CB	2.48	0.43
1:A:539:ILE:HD11	1:A:581:ILE:HD13	2.01	0.43
1:A:707:ASN:C	4:A:40:HOH:O	2.57	0.43
1:A:634:MET:HE2	1:A:643:CYS:HB2	2.01	0.43
1:A:630:ASN:HD21	1:A:632:GLN:HG3	1.83	0.43
1:A:769:ILE:HG21	3:A:902:HEZ:H12	2.00	0.43
1:A:634:MET:CE	1:A:643:CYS:SG	3.07	0.43
1:A:554:ASP:OD2	1:A:633:ARG:HD3	2.19	0.42
1:A:720:LYS:HD3	1:A:775:HIS:CD2	2.55	0.41
1:A:675:VAL:HG13	1:A:680:LEU:HG	2.01	0.41

*Continued on next page...*

*Continued from previous page...*

Atom-1	Atom-2	Interatomic distance (Å)	Clash overlap (Å)
1:A:630:ASN:HD22	1:A:633:ARG:H	1.68	0.40

All (1) symmetry-related close contacts are listed below. The label for Atom-2 includes the symmetry operator and encoded unit-cell translations to be applied.

Atom-1	Atom-2	Interatomic distance (Å)	Clash overlap (Å)
4:A:81:HOH:O	4:A:105:HOH:O[4_455]	2.13	0.07

## 5.3 Torsion angles [i](#)

### 5.3.1 Protein backbone [i](#)

In the following table, the Percentiles column shows the percent Ramachandran outliers of the chain as a percentile score with respect to all X-ray entries followed by that with respect to entries of similar resolution.

The Analysed column shows the number of residues for which the backbone conformation was analysed, and the total number of residues.

Mol	Chain	Analysed	Favoured	Allowed	Outliers	Percentiles
1	A	235/280 (84%)	226 (96%)	7 (3%)	2 (1%)	21 24

All (2) Ramachandran outliers are listed below:

Mol	Chain	Res	Type
1	A	708	SER
1	A	705	GLU

### 5.3.2 Protein sidechains [i](#)

In the following table, the Percentiles column shows the percent sidechain outliers of the chain as a percentile score with respect to all X-ray entries followed by that with respect to entries of similar resolution.

The Analysed column shows the number of residues for which the sidechain conformation was analysed, and the total number of residues.

Mol	Chain	Analysed	Rotameric	Outliers	Percentiles
1	A	220/255 (86%)	198 (90%)	22 (10%)	9 11

All (22) residues with a non-rotameric sidechain are listed below:

Mol	Chain	Res	Type
1	A	533	VAL
1	A	550	SER
1	A	576	LYS
1	A	614	ARG
1	A	630	ASN
1	A	631	GLU
1	A	634	MET
1	A	647	LEU
1	A	653	LEU
1	A	656	LEU
1	A	671	LEU
1	A	677	LYS
1	A	682	SER
1	A	685	LEU
1	A	692	THR
1	A	696	GLU
1	A	710	GLN
1	A	711	ASN
1	A	713	GLN
1	A	741	LEU
1	A	768	ASN
1	A	776	GLN

Some sidechains can be flipped to improve hydrogen bonding and reduce clashes. All (8) such sidechains are listed below:

Mol	Chain	Res	Type
1	A	570	GLN
1	A	630	ASN
1	A	642	GLN
1	A	683	GLN
1	A	734	ASN
1	A	759	ASN
1	A	775	HIS
1	A	776	GLN

### 5.3.3 RNA ⓘ

There are no RNA molecules in this entry.

## 5.4 Non-standard residues in protein, DNA, RNA chains ⓘ

There are no non-standard protein/DNA/RNA residues in this entry.

## 5.5 Carbohydrates ⓘ

There are no carbohydrates in this entry.

## 5.6 Ligand geometry ⓘ

4 ligands are modelled in this entry.

In the following table, the Counts columns list the number of bonds (or angles) for which Mogul statistics could be retrieved, the number of bonds (or angles) that are observed in the model and the number of bonds (or angles) that are defined in the chemical component dictionary. The Link column lists molecule types, if any, to which the group is linked. The Z score for a bond length (or angle) is the number of standard deviations the observed value is removed from the expected value. A bond length (or angle) with  $|Z| > 2$  is considered an outlier worth inspection. RMSZ is the root-mean-square of all Z scores of the bond lengths (or angles).

Mol	Type	Chain	Res	Link	Bond lengths			Bond angles		
					Counts	RMSZ	$\# Z  > 2$	Counts	RMSZ	$\# Z  > 2$
2	486	A	800	-	36,36,36	3.50	17 (47%)	48,56,56	5.38	21 (43%)
3	HEZ	A	901	-	7,7,7	0.80	0	6,6,6	1.01	1 (16%)
3	HEZ	A	902	-	7,7,7	0.50	0	6,6,6	0.62	0
3	HEZ	A	903	-	7,7,7	0.12	0	6,6,6	0.80	0

In the following table, the Chirals column lists the number of chiral outliers, the number of chiral centers analysed, the number of these observed in the model and the number defined in the chemical component dictionary. Similar counts are reported in the Torsion and Rings columns. '-' means no outliers of that kind were identified.

Mol	Type	Chain	Res	Link	Chirals	Torsions	Rings
2	486	A	800	-	-	0/8/72/72	0/5/5/5
3	HEZ	A	901	-	-	0/5/5/5	0/0/0/0
3	HEZ	A	902	-	-	0/5/5/5	0/0/0/0
3	HEZ	A	903	-	-	0/5/5/5	0/0/0/0

All (17) bond length outliers are listed below:

Mol	Chain	Res	Type	Atoms	Z	Observed(Å)	Ideal(Å)
2	A	800	486	O30-C2	-2.13	1.19	1.23
2	A	800	486	C3-C2	2.54	1.51	1.45

*Continued on next page...*

*Continued from previous page...*

Mol	Chain	Res	Type	Atoms	Z	Observed(Å)	Ideal(Å)
2	A	800	486	C23-C24	2.77	1.44	1.39
2	A	800	486	C26-C18	2.88	1.43	1.39
2	A	800	486	C8-C9	3.00	1.59	1.53
2	A	800	486	C7-C4	3.02	1.57	1.50
2	A	800	486	C17-C31	3.19	1.52	1.48
2	A	800	486	C24-N27	3.27	1.45	1.37
2	A	800	486	C1-C2	3.82	1.58	1.49
2	A	800	486	C18-C14	4.13	1.58	1.52
2	A	800	486	C10-C5	4.57	1.40	1.34
2	A	800	486	C25-C24	4.70	1.48	1.39
2	A	800	486	C22-C18	4.76	1.46	1.39
2	A	800	486	C19-C12	4.97	1.64	1.54
2	A	800	486	C6-C5	6.21	1.62	1.51
2	A	800	486	C9-C10	8.76	1.65	1.52
2	A	800	486	C14-C10	10.43	1.65	1.52

All (22) bond angle outliers are listed below:

Mol	Chain	Res	Type	Atoms	Z	Observed(°)	Ideal(°)
2	A	800	486	C32-C30-C31	-24.92	158.50	178.53
2	A	800	486	C16-C17-C12	-12.78	94.30	102.91
2	A	800	486	C17-C31-C30	-9.85	158.69	176.48
2	A	800	486	C1-C6-C5	-7.94	95.07	112.80
2	A	800	486	C6-C1-C2	-7.25	100.43	113.26
2	A	800	486	C15-C11-C12	-7.04	94.64	103.75
2	A	800	486	C2-C3-C4	-5.59	117.65	122.77
2	A	800	486	C19-C12-C13	-5.04	104.15	111.14
2	A	800	486	C10-C5-C4	-4.87	117.04	121.33
2	A	800	486	C13-C12-C11	-3.81	104.54	107.99
2	A	800	486	C3-C4-C5	-3.30	118.22	121.83
2	A	800	486	C8-C7-C4	-3.30	104.72	110.89
2	A	800	486	C8-C9-C11	-2.20	107.77	111.33
2	A	800	486	C16-C17-C31	-2.10	107.21	110.47
2	A	800	486	O3-C17-C31	2.03	111.60	108.32
3	A	901	HEZ	O6-C6-C5	2.08	125.19	111.62
2	A	800	486	C8-C9-C10	2.19	117.91	111.86
2	A	800	486	C6-C5-C10	2.67	127.23	123.78
2	A	800	486	C7-C4-C5	3.64	124.72	117.61
2	A	800	486	C19-C12-C11	4.99	121.66	111.81
2	A	800	486	C12-C17-C31	6.11	117.51	111.17
2	A	800	486	C17-C12-C11	9.26	106.05	100.00

There are no chirality outliers.

There are no torsion outliers.

There are no ring outliers.

2 monomers are involved in 4 short contacts:

Mol	Chain	Res	Type	Clashes	Symm-Clashes
2	A	800	486	2	0
3	A	902	HEZ	2	0

## 5.7 Other polymers [i](#)

There are no such residues in this entry.

## 5.8 Polymer linkage issues [i](#)

There are no chain breaks in this entry.

## 6 Fit of model and data [i](#)

### 6.1 Protein, DNA and RNA chains [i](#)

In the following table, the column labelled ‘#RSRZ> 2’ contains the number (and percentage) of RSRZ outliers, followed by percent RSRZ outliers for the chain as percentile scores relative to all X-ray entries and entries of similar resolution. The OWAB column contains the minimum, median, 95<sup>th</sup> percentile and maximum values of the occupancy-weighted average B-factor per residue. The column labelled ‘Q< 0.9’ lists the number of (and percentage) of residues with an average occupancy less than 0.9.

Mol	Chain	Analysed	<RSRZ>	#RSRZ>2	OWAB(Å <sup>2</sup> )	Q<0.9
1	A	239/280 (85%)	0.15	15 (6%) 23 31	5, 16, 27, 34	0

All (15) RSRZ outliers are listed below:

Mol	Chain	Res	Type	RSRZ
1	A	708	SER	5.6
1	A	707	ASN	5.5
1	A	706	GLY	4.4
1	A	552	VAL	4.4
1	A	709	SER	3.6
1	A	710	GLN	3.5
1	A	551	SER	3.4
1	A	553	PRO	3.2
1	A	530	PRO	3.0
1	A	705	GLU	2.8
1	A	745	MET	2.7
1	A	748	GLU	2.6
1	A	678	ASP	2.2
1	A	677	LYS	2.2
1	A	702	VAL	2.1

### 6.2 Non-standard residues in protein, DNA, RNA chains [i](#)

There are no non-standard protein/DNA/RNA residues in this entry.

### 6.3 Carbohydrates [i](#)

There are no carbohydrates in this entry.

## 6.4 Ligands [i](#)

In the following table, the Atoms column lists the number of modelled atoms in the group and the number defined in the chemical component dictionary. LLDF column lists the quality of electron density of the group with respect to its neighbouring residues in protein, DNA or RNA chains. The B-factors column lists the minimum, median, 95<sup>th</sup> percentile and maximum values of B factors of atoms in the group. The column labelled 'Q< 0.9' lists the number of atoms with occupancy less than 0.9.

Mol	Type	Chain	Res	Atoms	RSCC	RSR	LLDF	B-factors(Å <sup>2</sup> )	Q<0.9
3	HEZ	A	903	8/8	0.85	0.18	5.22	19,23,31,33	0
3	HEZ	A	901	8/8	0.82	0.23	3.99	22,25,27,28	0
3	HEZ	A	902	8/8	0.89	0.17	1.56	19,25,31,31	0
2	486	A	800	32/32	0.94	0.15	0.81	11,14,17,21	0

## 6.5 Other polymers [i](#)

There are no such residues in this entry.