



Full wwPDB X-ray Structure Validation Report ⓘ

Feb 1, 2016 – 07:01 PM GMT

PDB ID : 4NJB
Title : Crystal structure of the complex of lactoperoxidase from bovine with 3,3-oxydipyridine at 2.31 Å resolution
Authors : Yamini, S.; Sirohi, H.V.; Sinha, M.; Bhushan, A.; Kaur, P.; Sharma, S.; Singh, T.P.
Deposited on : 2013-11-09
Resolution : 2.31 Å(reported)

This is a Full wwPDB X-ray Structure Validation Report for a publicly released PDB entry.
We welcome your comments at validation@mail.wwpdb.org
A user guide is available at
<http://wwpdb.org/validation/2016/XrayValidationReportHelp>
with specific help available everywhere you see the ⓘ symbol.

The following versions of software and data (see [references ⓘ](#)) were used in the production of this report:

MolProbity : 4.02b-467
Mogul : 1.7 (RC4), CSD as536be (2015)
Xtriage (Phenix) : 1.9-1692
EDS : rb-20026688
Percentile statistics : 20151230.v01 (using entries in the PDB archive December 30th 2015)
Refmac : 5.8.0135
CCP4 : 6.5.0
Ideal geometry (proteins) : Engh & Huber (2001)
Ideal geometry (DNA, RNA) : Parkinson et al. (1996)
Validation Pipeline (wwPDB-VP) : trunk26865

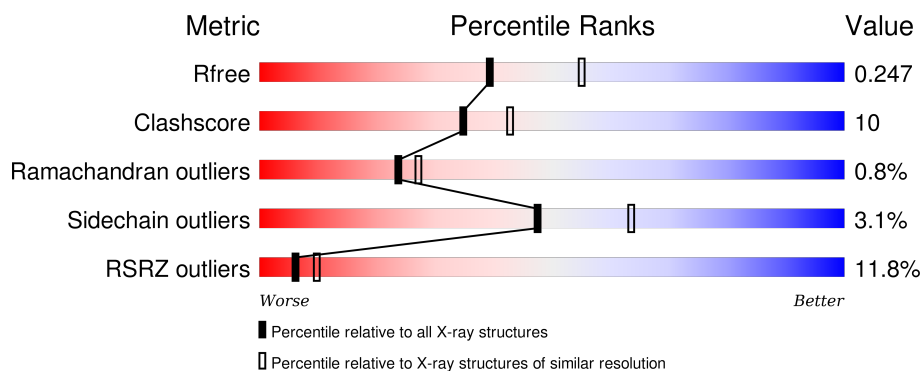
1 Overall quality at a glance

The following experimental techniques were used to determine the structure:

X-RAY DIFFRACTION

The reported resolution of this entry is 2.31 Å.

Percentile scores (ranging between 0-100) for global validation metrics of the entry are shown in the following graphic. The table shows the number of entries on which the scores are based.



Metric	Whole archive (#Entries)	Similar resolution (#Entries, resolution range(Å))
R_{free}	91344	4425 (2.34-2.30)
Clashscore	102246	5057 (2.34-2.30)
Ramachandran outliers	100387	5008 (2.34-2.30)
Sidechain outliers	100360	5007 (2.34-2.30)
RSRZ outliers	91569	4432 (2.34-2.30)

The table below summarises the geometric issues observed across the polymeric chains and their fit to the electron density. The red, orange, yellow and green segments on the lower bar indicate the fraction of residues that contain outliers for ≥ 3 , 2, 1 and 0 types of geometric quality criteria. A grey segment represents the fraction of residues that are not modelled. The numeric value for each fraction is indicated below the corresponding segment, with a dot representing fractions $\leq 5\%$. The upper red bar (where present) indicates the fraction of residues that have poor fit to the electron density. The numeric value is given above the bar.

Mol	Chain	Length	Quality of chain
1	A	595	

The following table lists non-polymeric compounds, carbohydrate monomers and non-standard residues in protein, DNA, RNA chains that are outliers for geometric or electron-density-fit criteria:

Mol	Type	Chain	Res	Chirality	Geometry	Clashes	Electron density
6	IOD	A	614	-	-	X	-

Continued on next page...

Continued from previous page...

Mol	Type	Chain	Res	Chirality	Geometry	Clashes	Electron density
6	IOD	A	619	-	-	-	X
7	PEG	A	620	-	-	-	X

2 Entry composition [i](#)

There are 10 unique types of molecules in this entry. The entry contains 5371 atoms, of which 0 are hydrogens and 0 are deuteriums.

In the tables below, the ZeroOcc column contains the number of atoms modelled with zero occupancy, the AltConf column contains the number of residues with at least one atom in alternate conformation and the Trace column contains the number of residues modelled with at most 2 atoms.

- Molecule 1 is a protein called Lactoperoxidase.

Mol	Chain	Residues	Atoms						ZeroOcc	AltConf	Trace
1	A	595	Total	C	N	O	P	S	0	0	0
			4774	3037	847	863	1	26			

- Molecule 2 is CALCIUM ION (three-letter code: CA) (formula: Ca).

Mol	Chain	Residues	Atoms		ZeroOcc	AltConf
2	A	1	Total	Ca	0	0
			1	1		

- Molecule 3 is PROTOPORPHYRIN IX CONTAINING FE (three-letter code: HEM) (formula: $C_{34}H_{32}FeN_4O_4$).



Mol	Chain	Residues	Atoms					ZeroOcc	AltConf
3	A	1	Total	C	Fe	N	O	0	0
			43	34	1	4	4		

- Molecule 4 is SUGAR (N-ACETYL-D-GLUCOSAMINE) (three-letter code: NAG) (formula: $C_8H_{15}NO_6$).



Mol	Chain	Residues	Atoms				ZeroOcc	AltConf
4	A	1	Total	C	N	O	0	0
			14	8	1	5		
4	A	1	Total	C	N	O	0	0
			14	8	1	5		

- Molecule 5 is a polymer of unknown type called SUGAR (2-MER).

Mol	Chain	Residues	Atoms				ZeroOcc	AltConf
5	A	2	Total	C	N	O	0	0
			28	16	2	10		
5	A	2	Total	C	N	O	0	0
			28	16	2	10		

- Molecule 6 is IODIDE ION (three-letter code: IOD) (formula: I).

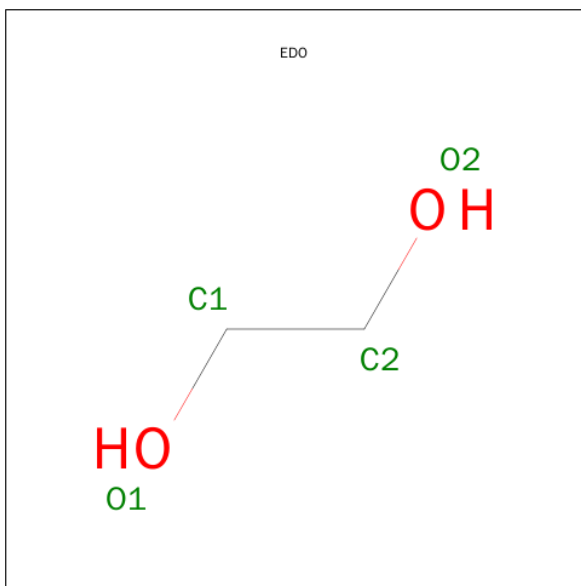
Mol	Chain	Residues	Atoms		ZeroOcc	AltConf
6	A	11	Total	I	0	0
			11	11		

- Molecule 7 is DI(HYDROXYETHYL)ETHER (three-letter code: PEG) (formula: $C_4H_{10}O_3$).



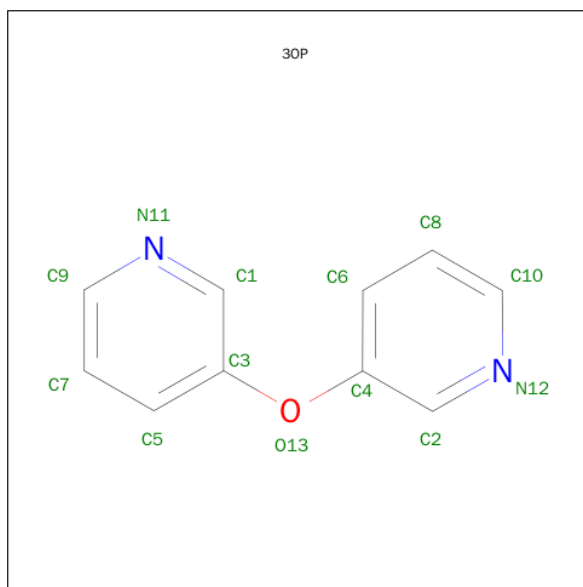
Mol	Chain	Residues	Atoms			ZeroOcc	AltConf
7	A	1	Total	C	O	0	0
			7	4	3		

- Molecule 8 is 1,2-ETHANEDIOL (three-letter code: EDO) (formula: $C_2H_6O_2$).



Mol	Chain	Residues	Atoms			ZeroOcc	AltConf
8	A	1	Total	C	O	0	0
			4	2	2		
8	A	1	Total	C	O	0	0
			4	2	2		

- Molecule 9 is 3,3'-OXYDIPYRIDINE (three-letter code: 3OP) (formula: $C_{10}H_8N_2O$).



Mol	Chain	Residues	Atoms				ZeroOcc	AltConf
9	A	1	Total	C	N	O	0	0
			13	10	2	1		

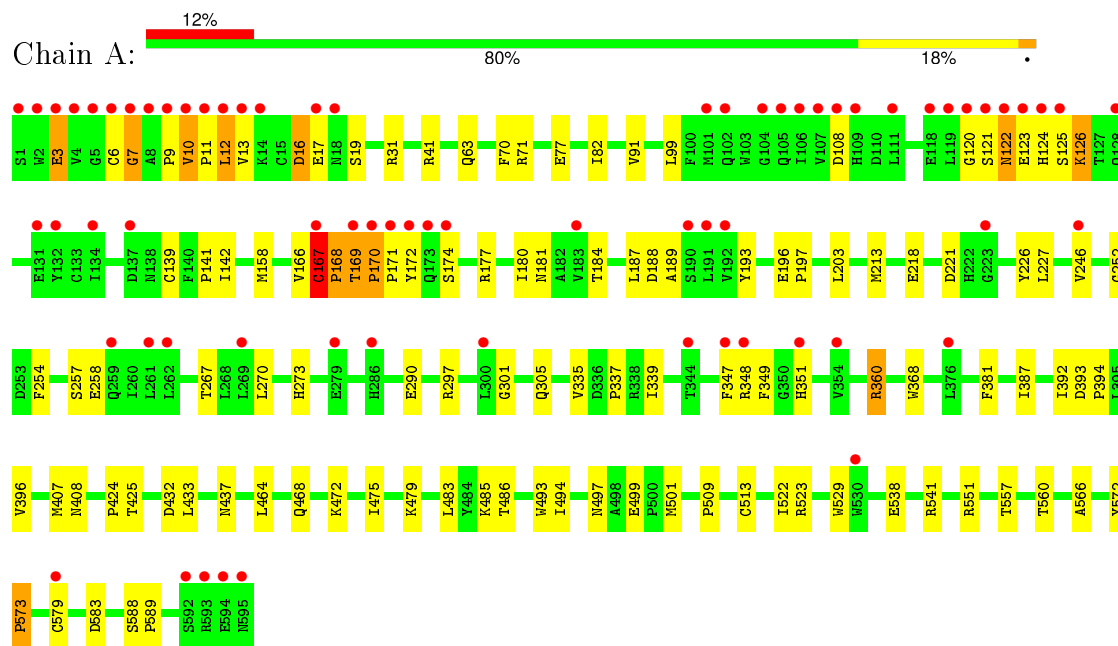
- Molecule 10 is water.

Mol	Chain	Residues	Atoms		ZeroOcc	AltConf
10	A	430	Total	O	0	0
			430	430		

3 Residue-property plots [i](#)

These plots are drawn for all protein, RNA and DNA chains in the entry. The first graphic for a chain summarises the proportions of errors displayed in the second graphic. The second graphic shows the sequence view annotated by issues in geometry and electron density. Residues are color-coded according to the number of geometric quality criteria for which they contain at least one outlier: green = 0, yellow = 1, orange = 2 and red = 3 or more. A red dot above a residue indicates a poor fit to the electron density ($\text{RSRZ} > 2$). Stretches of 2 or more consecutive residues without any outlier are shown as a green connector. Residues present in the sample, but not in the model, are shown in grey.

- Molecule 1: Lactoperoxidase



4 Data and refinement statistics

Property	Value	Source
Space group	P 1 21 1	Depositor
Cell constants a, b, c, α , β , γ	54.36Å 80.40Å 76.28Å 90.00° 103.37° 90.00°	Depositor
Resolution (Å)	39.02 – 2.31 39.02 – 2.31	Depositor EDS
% Data completeness (in resolution range)	95.6 (39.02-2.31) 95.6 (39.02-2.31)	Depositor EDS
R_{merge}	(Not available)	Depositor
R_{sym}	0.06	Depositor
$\langle I/\sigma(I) \rangle$ ¹	5.09 (at 2.31Å)	Xtriage
Refinement program	CNS 1.1	Depositor
R, R_{free}	0.205 , 0.227 0.203 , 0.247	Depositor DCC
R_{free} test set	1332 reflections (5.21%)	DCC
Wilson B-factor (Å ²)	41.2	Xtriage
Anisotropy	0.767	Xtriage
Bulk solvent k_{sol} (e/Å ³), B_{sol} (Å ²)	0.31 , 50.1	EDS
Estimated twinning fraction	No twinning to report.	Xtriage
L-test for twinning ²	$\langle L \rangle = 0.50$, $\langle L^2 \rangle = 0.34$	Xtriage
Outliers	0 of 26895 reflections	Xtriage
F_o, F_c correlation	0.95	EDS
Total number of atoms	5371	wwPDB-VP
Average B, all atoms (Å ²)	53.0	wwPDB-VP

Xtriage's analysis on translational NCS is as follows: *The largest off-origin peak in the Patterson function is 5.60% of the height of the origin peak. No significant pseudotranslation is detected.*

¹Intensities estimated from amplitudes.

²Theoretical values of $\langle |L| \rangle$, $\langle L^2 \rangle$ for acentric reflections are 0.5, 0.375 respectively for untwinned datasets, and 0.333, 0.2 for perfectly twinned datasets.

5 Model quality [i](#)

5.1 Standard geometry [i](#)

Bond lengths and bond angles in the following residue types are not validated in this section: PEG, NAG, SEP, CA, EDO, 3OP, HEM, IOD

The Z score for a bond length (or angle) is the number of standard deviations the observed value is removed from the expected value. A bond length (or angle) with $|Z| > 5$ is considered an outlier worth inspection. RMSZ is the root-mean-square of all Z scores of the bond lengths (or angles).

Mol	Chain	Bond lengths		Bond angles	
		RMSZ	$\# Z > 5$	RMSZ	$\# Z > 5$
1	A	0.40	0/4891	0.74	3/6634 (0.0%)

There are no bond length outliers.

All (3) bond angle outliers are listed below:

Mol	Chain	Res	Type	Atoms	Z	Observed($^{\circ}$)	Ideal($^{\circ}$)
1	A	170	PRO	N-CA-C	-7.51	92.56	112.10
1	A	167	CYS	CA-CB-SG	-6.27	102.71	114.00
1	A	3	GLU	N-CA-C	5.63	126.20	111.00

There are no chirality outliers.

There are no planarity outliers.

5.2 Too-close contacts [i](#)

In the following table, the Non-H and H(model) columns list the number of non-hydrogen atoms and hydrogen atoms in the chain respectively. The H(added) column lists the number of hydrogen atoms added and optimized by MolProbity. The Clashes column lists the number of clashes within the asymmetric unit, whereas Symm-Clashes lists symmetry related clashes.

Mol	Chain	Non-H	H(model)	H(added)	Clashes	Symm-Clashes
1	A	4774	0	4687	92	0
2	A	1	0	0	0	0
3	A	43	0	30	7	0
4	A	28	0	26	0	0
5	A	56	0	50	0	0
6	A	11	0	0	4	0
7	A	7	0	9	0	0
8	A	8	0	12	0	0

Continued on next page...

Continued from previous page...

Mol	Chain	Non-H	H(model)	H(added)	Clashes	Symm-Clashes
9	A	13	0	8	4	0
10	A	430	0	0	9	0
All	All	5371	0	4822	97	0

The all-atom clashscore is defined as the number of clashes found per 1000 atoms (including hydrogen atoms). The all-atom clashscore for this structure is 10.

All (97) close contacts within the same asymmetric unit are listed below, sorted by their clash magnitude.

Atom-1	Atom-2	Interatomic distance (Å)	Clash overlap (Å)
1:A:108:ASP:OD1	3:A:602:HEM:HMD1	1.40	1.20
1:A:258:GLU:HG3	9:A:623:3OP:H1	1.15	1.08
1:A:424:PRO:O	1:A:425:THR:HG22	1.56	1.05
1:A:258:GLU:CG	9:A:623:3OP:H1	1.89	1.01
1:A:258:GLU:HG3	9:A:623:3OP:C5	2.07	0.80
1:A:169:THR:H	1:A:170:PRO:CD	1.95	0.79
1:A:408:ASN:HB2	10:A:843:HOH:O	1.82	0.78
1:A:108:ASP:OD1	3:A:602:HEM:CMD	2.28	0.77
1:A:258:GLU:OE1	3:A:602:HEM:HMB3	1.84	0.77
1:A:246:VAL:HG11	1:A:387:ILE:HD12	1.70	0.73
1:A:63:GLN:CD	1:A:63:GLN:H	1.94	0.71
1:A:258:GLU:OE1	3:A:602:HEM:CMB	2.40	0.70
1:A:485:LYS:N	10:A:1127:HOH:O	2.27	0.67
6:A:614:IOD:I	10:A:1100:HOH:O	2.83	0.67
1:A:538:GLU:HG2	1:A:541:ARG:NH2	2.11	0.66
1:A:120:GLY:HA3	1:A:126:LYS:HD2	1.79	0.64
1:A:227:LEU:HD22	1:A:270:LEU:HD22	1.79	0.64
6:A:618:IOD:I	10:A:1105:HOH:O	2.86	0.62
1:A:213:MET:HG2	1:A:273:HIS:CD2	2.35	0.62
1:A:171:PRO:HG2	10:A:1056:HOH:O	2.01	0.60
1:A:168:PRO:HG3	1:A:172:TYR:HB2	1.85	0.59
1:A:475:ILE:HG22	1:A:479:LYS:HE3	1.83	0.59
1:A:572:TYR:CD1	1:A:573:PRO:HA	2.39	0.58
1:A:254:PHE:HB2	10:A:970:HOH:O	2.05	0.56
1:A:169:THR:N	1:A:170:PRO:CD	2.65	0.56
1:A:551:ARG:HD3	1:A:583:ASP:O	2.06	0.56
1:A:424:PRO:O	1:A:425:THR:CG2	2.43	0.55
1:A:71:ARG:NH1	1:A:71:ARG:HG2	2.22	0.55
1:A:227:LEU:HD21	1:A:267:THR:HA	1.87	0.55
1:A:560:THR:HA	1:A:579:CYS:SG	2.46	0.54
1:A:168:PRO:HG3	1:A:172:TYR:CD1	2.42	0.54

Continued on next page...

Continued from previous page...

Atom-1	Atom-2	Interatomic distance (Å)	Clash overlap (Å)
1:A:169:THR:H	1:A:170:PRO:HD3	1.72	0.54
1:A:123:GLU:HG3	1:A:125:SER:H	1.72	0.53
1:A:221:ASP:HB2	1:A:226:TYR:CZ	2.43	0.53
1:A:12:LEU:HD23	1:A:13:VAL:H	1.74	0.53
1:A:468:GLN:O	1:A:472:LYS:N	2.42	0.53
1:A:572:TYR:CE2	1:A:573:PRO:HB3	2.44	0.53
1:A:139:CYS:SG	1:A:141:PRO:HD3	2.49	0.52
1:A:63:GLN:CD	1:A:63:GLN:N	2.62	0.52
6:A:614:IOD:I	10:A:1075:HOH:O	2.89	0.52
1:A:167:CYS:CB	1:A:168:PRO:CD	2.89	0.51
1:A:121:SER:O	1:A:122:ASN:ND2	2.44	0.51
1:A:6:CYS:SG	1:A:7:GLY:N	2.84	0.50
1:A:257:SER:O	1:A:381:PHE:HA	2.12	0.50
1:A:407:MET:HB3	1:A:501:MET:CE	2.42	0.49
1:A:523:ARG:HG3	1:A:529:TRP:CE2	2.47	0.49
1:A:71:ARG:HH11	1:A:71:ARG:HG2	1.76	0.48
1:A:393:ASP:HB2	1:A:394:PRO:HD3	1.94	0.48
1:A:180:ILE:HG22	1:A:181:ASN:N	2.30	0.47
1:A:348:ARG:NH2	3:A:602:HEM:HAD1	2.30	0.47
1:A:464:LEU:O	1:A:468:GLN:HG3	2.15	0.47
1:A:158:MET:CE	1:A:432:ASP:H	2.27	0.47
1:A:99:LEU:HD23	1:A:566:ALA:HB1	1.95	0.47
3:A:602:HEM:HMB1	3:A:602:HEM:HBB2	1.96	0.46
1:A:122:ASN:C	1:A:122:ASN:HD22	2.17	0.46
1:A:572:TYR:CZ	1:A:573:PRO:HB3	2.50	0.46
1:A:70:PHE:CD2	1:A:485:LYS:HG3	2.51	0.45
1:A:177:ARG:HB2	10:A:915:HOH:O	2.16	0.45
1:A:16:ASP:OD2	1:A:19:SER:HB2	2.15	0.45
1:A:301:GLY:O	1:A:305:GLN:HG3	2.16	0.45
1:A:16:ASP:OD1	1:A:16:ASP:C	2.55	0.45
1:A:348:ARG:HH11	1:A:437:ASN:ND2	2.14	0.44
1:A:493:TRP:O	1:A:497:ASN:OD1	2.36	0.44
1:A:349:PHE:HA	1:A:497:ASN:HD21	1.83	0.44
1:A:17:GLU:O	1:A:31:ARG:NH2	2.51	0.44
1:A:142:ILE:HG23	10:A:977:HOH:O	2.18	0.43
1:A:166:VAL:O	1:A:167:CYS:HB2	2.18	0.43
1:A:196:GLU:HA	1:A:197:PRO:HD3	1.90	0.43
1:A:9:PRO:CG	1:A:167:CYS:H	2.32	0.43
1:A:10:VAL:HG11	1:A:41:ARG:CZ	2.49	0.42
1:A:393:ASP:OD1	1:A:557:THR:HB	2.19	0.42
1:A:290:GLU:HA	1:A:290:GLU:OE1	2.20	0.42

Continued on next page...

Continued from previous page...

Atom-1	Atom-2	Interatomic distance (Å)	Clash overlap (Å)
1:A:258:GLU:CD	9:A:623:3OP:H1	2.38	0.42
1:A:187:LEU:HA	1:A:187:LEU:HD12	1.93	0.42
1:A:193:TYR:OH	1:A:297:ARG:HA	2.18	0.42
1:A:392:ILE:O	1:A:396:VAL:HG23	2.19	0.42
1:A:203:LEU:HD11	1:A:252:GLY:HA2	2.02	0.42
3:A:602:HEM:CMB	3:A:602:HEM:HBB2	2.49	0.42
1:A:9:PRO:HG2	1:A:167:CYS:H	1.84	0.42
1:A:351:HIS:CE1	1:A:433:LEU:HD21	2.55	0.42
1:A:184:THR:OG1	1:A:188:ASP:OD2	2.38	0.42
1:A:82:ILE:HD11	1:A:483:LEU:HD12	2.01	0.42
1:A:407:MET:HB3	1:A:501:MET:HE2	2.00	0.41
1:A:499:GLU:OE1	1:A:509:PRO:HD2	2.20	0.41
1:A:63:GLN:O	1:A:71:ARG:NH1	2.54	0.41
1:A:588:SER:N	1:A:589:PRO:CD	2.82	0.41
1:A:168:PRO:CG	1:A:172:TYR:HB2	2.49	0.41
1:A:188:ASP:O	1:A:189:ALA:HB3	2.20	0.41
1:A:77:GLU:HG3	6:A:610:IOD:I	2.91	0.41
1:A:339:ILE:CD1	1:A:522:ILE:HD11	2.51	0.41
1:A:120:GLY:HA3	1:A:126:LYS:CD	2.49	0.41
1:A:82:ILE:CD1	1:A:483:LEU:HD12	2.50	0.41
1:A:168:PRO:HG3	1:A:172:TYR:HD1	1.84	0.40
1:A:221:ASP:HB2	1:A:226:TYR:CE2	2.57	0.40
1:A:393:ASP:CB	1:A:394:PRO:HD3	2.51	0.40
1:A:335:VAL:O	1:A:337:PRO:HD3	2.21	0.40
1:A:360:ARG:HB3	1:A:368:TRP:HB3	2.04	0.40

There are no symmetry-related clashes.

5.3 Torsion angles ⓘ

5.3.1 Protein backbone ⓘ

In the following table, the Percentiles column shows the percent Ramachandran outliers of the chain as a percentile score with respect to all X-ray entries followed by that with respect to entries of similar resolution.

The Analysed column shows the number of residues for which the backbone conformation was analysed, and the total number of residues.

Mol	Chain	Analysed	Favoured	Allowed	Outliers	Percentiles
1	A	592/595 (100%)	562 (95%)	25 (4%)	5 (1%)	24 27

All (5) Ramachandran outliers are listed below:

Mol	Chain	Res	Type
1	A	3	GLU
1	A	167	CYS
1	A	11	PRO
1	A	169	THR
1	A	7	GLY

5.3.2 Protein sidechains ⓘ

In the following table, the Percentiles column shows the percent sidechain outliers of the chain as a percentile score with respect to all X-ray entries followed by that with respect to entries of similar resolution.

The Analysed column shows the number of residues for which the sidechain conformation was analysed, and the total number of residues.

Mol	Chain	Analysed	Rotameric	Outliers	Percentiles
1	A	517/517 (100%)	501 (97%)	16 (3%)	47 63

All (16) residues with a non-rotameric sidechain are listed below:

Mol	Chain	Res	Type
1	A	10	VAL
1	A	12	LEU
1	A	16	ASP
1	A	91	VAL
1	A	122	ASN
1	A	124	HIS
1	A	126	LYS
1	A	168	PRO
1	A	174	SER
1	A	218	GLU
1	A	347	PHE
1	A	360	ARG
1	A	486	THR
1	A	494	ILE
1	A	513	CYS
1	A	573	PRO

Some sidechains can be flipped to improve hydrogen bonding and reduce clashes. All (5) such sidechains are listed below:

Mol	Chain	Res	Type
1	A	122	ASN
1	A	124	HIS
1	A	147	ASN
1	A	497	ASN
1	A	570	ASN

5.3.3 RNA ⓘ

There are no RNA molecules in this entry.

5.4 Non-standard residues in protein, DNA, RNA chains ⓘ

1 non-standard protein/DNA/RNA residue is modelled in this entry.

In the following table, the Counts columns list the number of bonds (or angles) for which Mogul statistics could be retrieved, the number of bonds (or angles) that are observed in the model and the number of bonds (or angles) that are defined in the chemical component dictionary. The Link column lists molecule types, if any, to which the group is linked. The Z score for a bond length (or angle) is the number of standard deviations the observed value is removed from the expected value. A bond length (or angle) with $|Z| > 2$ is considered an outlier worth inspection. RMSZ is the root-mean-square of all Z scores of the bond lengths (or angles).

Mol	Type	Chain	Res	Link	Bond lengths			Bond angles		
					Counts	RMSZ	$\# Z > 2$	Counts	RMSZ	$\# Z > 2$
1	SEP	A	198	1	8,9,10	2.68	3 (37%)	8,12,14	2.64	6 (75%)

In the following table, the Chirals column lists the number of chiral outliers, the number of chiral centers analysed, the number of these observed in the model and the number defined in the chemical component dictionary. Similar counts are reported in the Torsion and Rings columns. '-' means no outliers of that kind were identified.

Mol	Type	Chain	Res	Link	Chirals	Torsions	Rings
1	SEP	A	198	1	-	0/6/8/10	0/0/0/0

All (3) bond length outliers are listed below:

Mol	Chain	Res	Type	Atoms	Z	Observed(Å)	Ideal(Å)
1	A	198	SEP	P-O3P	-4.54	1.38	1.54
1	A	198	SEP	P-O1P	-4.34	1.36	1.51
1	A	198	SEP	P-O2P	-3.69	1.41	1.54

All (6) bond angle outliers are listed below:

Mol	Chain	Res	Type	Atoms	Z	Observed(°)	Ideal(°)
1	A	198	SEP	OG-CB-CA	-3.36	105.40	108.27
1	A	198	SEP	OG-P-O1P	-2.50	100.78	107.14
1	A	198	SEP	O3P-P-O2P	-2.21	98.97	107.38
1	A	198	SEP	O3P-P-OG	2.49	113.74	106.56
1	A	198	SEP	O2P-P-OG	3.14	115.59	106.56
1	A	198	SEP	O2P-P-O1P	3.56	122.04	110.58

There are no chirality outliers.

There are no torsion outliers.

There are no ring outliers.

No monomer is involved in short contacts.

5.5 Carbohydrates

4 carbohydrates are modelled in this entry.

In the following table, the Counts columns list the number of bonds (or angles) for which Mogul statistics could be retrieved, the number of bonds (or angles) that are observed in the model and the number of bonds (or angles) that are defined in the chemical component dictionary. The Link column lists molecule types, if any, to which the group is linked. The Z score for a bond length (or angle) is the number of standard deviations the observed value is removed from the expected value. A bond length (or angle) with $|Z| > 2$ is considered an outlier worth inspection. RMSZ is the root-mean-square of all Z scores of the bond lengths (or angles).

Mol	Type	Chain	Res	Link	Bond lengths			Bond angles		
					Counts	RMSZ	# $ Z > 2$	Counts	RMSZ	# $ Z > 2$
5	NAG	A	604	1,5	14,14,15	0.55	0	15,19,21	1.14	1 (6%)
5	NAG	A	605	5	14,14,15	0.76	1 (7%)	15,19,21	1.40	2 (13%)
5	NAG	A	606	1,5	14,14,15	0.72	0	15,19,21	1.40	3 (20%)
5	NAG	A	607	5	14,14,15	0.62	0	15,19,21	2.87	5 (33%)

In the following table, the Chirals column lists the number of chiral outliers, the number of chiral centers analysed, the number of these observed in the model and the number defined in the chemical component dictionary. Similar counts are reported in the Torsion and Rings columns. '-' means no outliers of that kind were identified.

Mol	Type	Chain	Res	Link	Chirals	Torsions	Rings
5	NAG	A	604	1,5	-	0/6/23/26	0/1/1/1
5	NAG	A	605	5	-	0/6/23/26	0/1/1/1
5	NAG	A	606	1,5	-	0/6/23/26	0/1/1/1
5	NAG	A	607	5	-	0/6/23/26	0/1/1/1

All (1) bond length outliers are listed below:

Mol	Chain	Res	Type	Atoms	Z	Observed(Å)	Ideal(Å)
5	A	605	NAG	O5-C1	-2.02	1.40	1.43

All (11) bond angle outliers are listed below:

Mol	Chain	Res	Type	Atoms	Z	Observed(°)	Ideal(°)
5	A	607	NAG	C4-C3-C2	-5.41	102.82	111.23
5	A	605	NAG	C1-O5-C5	-3.39	107.95	112.25
5	A	606	NAG	C1-O5-C5	-3.02	108.42	112.25
5	A	606	NAG	C3-C4-C5	-2.24	106.29	110.20
5	A	606	NAG	C2-N2-C7	-2.11	120.33	123.04
5	A	604	NAG	C1-O5-C5	2.10	114.92	112.25
5	A	607	NAG	C3-C2-N2	2.29	116.05	110.56
5	A	607	NAG	O5-C5-C6	2.53	112.81	107.35
5	A	607	NAG	O3-C3-C2	3.18	115.42	109.11
5	A	605	NAG	C4-C3-C2	3.24	116.26	111.23
5	A	607	NAG	C1-O5-C5	8.05	122.46	112.25

There are no chirality outliers.

There are no torsion outliers.

There are no ring outliers.

No monomer is involved in short contacts.

5.6 Ligand geometry [i](#)

Of 19 ligands modelled in this entry, 12 are monoatomic - leaving 7 for Mogul analysis.

In the following table, the Counts columns list the number of bonds (or angles) for which Mogul statistics could be retrieved, the number of bonds (or angles) that are observed in the model and the number of bonds (or angles) that are defined in the chemical component dictionary. The Link column lists molecule types, if any, to which the group is linked. The Z score for a bond length (or angle) is the number of standard deviations the observed value is removed from the expected value. A bond length (or angle) with $|Z| > 2$ is considered an outlier worth inspection. RMSZ is the root-mean-square of all Z scores of the bond lengths (or angles).

Mol	Type	Chain	Res	Link	Bond lengths			Bond angles		
					Counts	RMSZ	$\# Z > 2$	Counts	RMSZ	$\# Z > 2$
3	HEM	A	602	1,10	30,50,50	3.83	15 (50%)	24,82,82	2.80	12 (50%)
4	NAG	A	603	1	14,14,15	0.64	0	15,19,21	1.26	2 (13%)
4	NAG	A	608	1	14,14,15	0.50	0	15,19,21	1.31	3 (20%)

Mol	Type	Chain	Res	Link	Bond lengths			Bond angles		
					Counts	RMSZ	# Z > 2	Counts	RMSZ	# Z > 2
7	PEG	A	620	-	6,6,6	1.80	2 (33%)	5,5,5	0.97	0
8	EDO	A	621	-	3,3,3	0.83	0	2,2,2	0.72	0
8	EDO	A	622	-	3,3,3	0.77	0	2,2,2	0.76	0
9	3OP	A	623	-	14,14,14	2.32	5 (35%)	17,17,17	1.35	3 (17%)

In the following table, the Chirals column lists the number of chiral outliers, the number of chiral centers analysed, the number of these observed in the model and the number defined in the chemical component dictionary. Similar counts are reported in the Torsion and Rings columns. '-' means no outliers of that kind were identified.

Mol	Type	Chain	Res	Link	Chirals	Torsions	Rings
3	HEM	A	602	1,10	-	0/10/54/54	0/0/8/8
4	NAG	A	603	1	-	0/6/23/26	0/1/1/1
4	NAG	A	608	1	-	0/6/23/26	0/1/1/1
7	PEG	A	620	-	-	0/4/4/4	0/0/0/0
8	EDO	A	621	-	-	0/1/1/1	0/0/0/0
8	EDO	A	622	-	-	0/1/1/1	0/0/0/0
9	3OP	A	623	-	-	0/4/4/4	0/2/2/2

All (22) bond length outliers are listed below:

Mol	Chain	Res	Type	Atoms	Z	Observed(Å)	Ideal(Å)
3	A	602	HEM	C3B-C4B	-10.13	1.42	1.51
3	A	602	HEM	CMA-C3A	-8.17	1.35	1.51
3	A	602	HEM	C3D-C4D	-7.83	1.41	1.51
3	A	602	HEM	C2C-C1C	-5.46	1.42	1.52
9	A	623	3OP	C1-C3	-5.05	1.30	1.38
3	A	602	HEM	C3B-CAB	-3.93	1.44	1.51
9	A	623	3OP	C2-C4	-3.91	1.32	1.38
7	A	620	PEG	O1-C1	-3.35	1.24	1.42
9	A	623	3OP	C7-C5	-3.19	1.32	1.38
9	A	623	3OP	O13-C4	-2.88	1.33	1.39
3	A	602	HEM	C2D-C3D	-2.60	1.46	1.54
7	A	620	PEG	C2-C1	-2.55	1.35	1.49
9	A	623	3OP	C5-C3	-2.02	1.34	1.38
3	A	602	HEM	CBC-CAC	2.02	1.41	1.29
3	A	602	HEM	FE-NC	2.46	2.05	1.95
3	A	602	HEM	CMB-C2B	2.71	1.59	1.53
3	A	602	HEM	CHD-C1D	2.85	1.46	1.38
3	A	602	HEM	C1C-NC	3.90	1.40	1.36
3	A	602	HEM	CMC-C2C	4.12	1.62	1.53
3	A	602	HEM	FE-NB	4.15	2.19	1.97

Continued on next page...

Continued from previous page...

Mol	Chain	Res	Type	Atoms	Z	Observed(Å)	Ideal(Å)
3	A	602	HEM	C4A-CHB	5.21	1.54	1.39
3	A	602	HEM	C4C-NC	5.21	1.42	1.36

All (20) bond angle outliers are listed below:

Mol	Chain	Res	Type	Atoms	Z	Observed(°)	Ideal(°)
3	A	602	HEM	CBD-CAD-C3D	-4.44	100.64	113.55
3	A	602	HEM	CAA-C2A-C1A	-4.32	122.31	127.01
3	A	602	HEM	C2C-C1C-NC	-2.82	105.45	110.21
4	A	608	NAG	C3-C4-C5	-2.80	105.32	110.20
3	A	602	HEM	C1D-CHD-C4C	-2.67	121.36	125.82
3	A	602	HEM	CMA-C3A-C4A	-2.39	124.42	128.36
9	A	623	3OP	C3-C1-N11	-2.25	120.87	122.78
4	A	608	NAG	C2-N2-C7	-2.01	120.45	123.04
4	A	608	NAG	O5-C5-C6	2.03	111.74	107.35
3	A	602	HEM	C3C-CAC-CBC	2.03	127.57	124.46
9	A	623	3OP	O13-C3-C1	2.11	121.32	118.21
9	A	623	3OP	C7-C5-C3	2.21	122.73	118.92
3	A	602	HEM	C2D-C3D-C4D	2.29	105.38	101.50
3	A	602	HEM	CAA-CBA-CGA	2.32	117.00	112.75
4	A	603	NAG	C1-O5-C5	2.45	115.36	112.25
4	A	603	NAG	O4-C4-C5	2.58	116.09	109.24
3	A	602	HEM	CAD-C3D-C2D	3.85	124.30	113.22
3	A	602	HEM	CAD-C3D-C4D	5.05	130.30	112.47
3	A	602	HEM	CMB-C2B-C3B	5.15	129.39	116.53
3	A	602	HEM	CMC-C2C-C3C	5.73	130.83	116.53

There are no chirality outliers.

There are no torsion outliers.

There are no ring outliers.

2 monomers are involved in 11 short contacts:

Mol	Chain	Res	Type	Clashes	Symm-Clashes
3	A	602	HEM	7	0
9	A	623	3OP	4	0

5.7 Other polymers ⓘ

There are no such residues in this entry.

5.8 Polymer linkage issues ⓘ

There are no chain breaks in this entry.

6 Fit of model and data ⓘ

6.1 Protein, DNA and RNA chains ⓘ

In the following table, the column labelled ‘#RSRZ> 2’ contains the number (and percentage) of RSRZ outliers, followed by percent RSRZ outliers for the chain as percentile scores relative to all X-ray entries and entries of similar resolution. The OWAB column contains the minimum, median, 95th percentile and maximum values of the occupancy-weighted average B-factor per residue. The column labelled ‘Q< 0.9’ lists the number of (and percentage) of residues with an average occupancy less than 0.9.

Mol	Chain	Analysed	<RSRZ>	#RSRZ>2	OWAB(Å ²)	Q<0.9
1	A	594/595 (99%)	0.67	70 (11%) 6 10	29, 49, 98, 100	0

All (70) RSRZ outliers are listed below:

Mol	Chain	Res	Type	RSRZ
1	A	2	TRP	16.3
1	A	173	GLN	15.8
1	A	172	TYR	15.5
1	A	8	ALA	13.5
1	A	7	GLY	13.3
1	A	13	VAL	8.7
1	A	12	LEU	8.6
1	A	174	SER	8.5
1	A	9	PRO	8.5
1	A	1	SER	8.4
1	A	121	SER	7.7
1	A	170	PRO	6.7
1	A	122	ASN	6.7
1	A	595	ASN	6.6
1	A	120	GLY	6.5
1	A	6	CYS	6.5
1	A	10	VAL	6.3
1	A	169	THR	5.3
1	A	107	VAL	4.9
1	A	593	ARG	4.8
1	A	4	VAL	4.8
1	A	5	GLY	4.6
1	A	11	PRO	4.5
1	A	106	ILE	4.4
1	A	171	PRO	4.3
1	A	17	GLU	4.2
1	A	124	HIS	4.0

Continued on next page...

Continued from previous page...

Mol	Chain	Res	Type	RSRZ
1	A	132	TYR	3.9
1	A	3	GLU	3.7
1	A	119	LEU	3.6
1	A	223	GLY	3.5
1	A	125	SER	3.5
1	A	183	VAL	3.4
1	A	123	GLU	3.3
1	A	191	LEU	3.3
1	A	279	GLU	3.3
1	A	14	LYS	3.3
1	A	118	GLU	3.2
1	A	111	LEU	3.1
1	A	354	VAL	3.1
1	A	134	ILE	3.0
1	A	594	GLU	3.0
1	A	269	LEU	3.0
1	A	18	ASN	2.9
1	A	105	GLN	2.9
1	A	261	LEU	2.9
1	A	192	VAL	2.8
1	A	376	LEU	2.6
1	A	128	GLN	2.6
1	A	108	ASP	2.5
1	A	530	TRP	2.5
1	A	102	GLN	2.5
1	A	137	ASP	2.5
1	A	592	SER	2.4
1	A	104	GLY	2.4
1	A	109	HIS	2.3
1	A	259	GLN	2.3
1	A	286	HIS	2.3
1	A	300	LEU	2.3
1	A	190	SER	2.3
1	A	101	MET	2.3
1	A	167	CYS	2.2
1	A	344	THR	2.2
1	A	246	VAL	2.2
1	A	131	GLU	2.2
1	A	348	ARG	2.2
1	A	579	CYS	2.2
1	A	347	PHE	2.1
1	A	262	LEU	2.1

Continued on next page...

Continued from previous page...

Mol	Chain	Res	Type	RSRZ
1	A	351	HIS	2.1

6.2 Non-standard residues in protein, DNA, RNA chains [i](#)

In the following table, the Atoms column lists the number of modelled atoms in the group and the number defined in the chemical component dictionary. LLDF column lists the quality of electron density of the group with respect to its neighbouring residues in protein, DNA or RNA chains. The B-factors column lists the minimum, median, 95th percentile and maximum values of B factors of atoms in the group. The column labelled 'Q< 0.9' lists the number of atoms with occupancy less than 0.9.

Mol	Type	Chain	Res	Atoms	RSCC	RSR	LLDF	B-factors(Å ²)	Q<0.9
1	SEP	A	198	10/11	0.97	0.11	-	25,46,51,54	0

6.3 Carbohydrates [i](#)

In the following table, the Atoms column lists the number of modelled atoms in the group and the number defined in the chemical component dictionary. LLDF column lists the quality of electron density of the group with respect to its neighbouring residues in protein, DNA or RNA chains. The B-factors column lists the minimum, median, 95th percentile and maximum values of B factors of atoms in the group. The column labelled 'Q< 0.9' lists the number of atoms with occupancy less than 0.9.

Mol	Type	Chain	Res	Atoms	RSCC	RSR	LLDF	B-factors(Å ²)	Q<0.9
5	NAG	A	604	14/15	0.84	0.19	1.91	40,48,52,55	0
5	NAG	A	606	14/15	0.93	0.15	0.25	49,56,68,70	0
5	NAG	A	607	14/15	0.71	0.32	-	50,54,58,68	0
5	NAG	A	605	14/15	0.67	0.42	-	42,49,57,57	0

6.4 Ligands [i](#)

In the following table, the Atoms column lists the number of modelled atoms in the group and the number defined in the chemical component dictionary. LLDF column lists the quality of electron density of the group with respect to its neighbouring residues in protein, DNA or RNA chains. The B-factors column lists the minimum, median, 95th percentile and maximum values of B factors of atoms in the group. The column labelled 'Q< 0.9' lists the number of atoms with occupancy less than 0.9.

Mol	Type	Chain	Res	Atoms	RSCC	RSR	LLDF	B-factors(Å ²)	Q<0.9
7	PEG	A	620	7/7	0.80	0.22	7.22	36,44,48,49	0
6	IOD	A	619	1/1	0.98	0.27	4.62	61,61,61,61	0

Continued on next page...

Continued from previous page...

Mol	Type	Chain	Res	Atoms	RSCC	RSR	LLDF	B-factors(\AA^2)	Q<0.9
9	3OP	A	623	13/13	0.83	0.32	1.34	44,61,69,69	0
3	HEM	A	602	43/43	0.96	0.30	1.13	27,33,40,41	0
6	IOD	A	612	1/1	0.97	0.13	-0.43	66,66,66,66	0
8	EDO	A	621	4/4	0.90	0.12	-0.92	46,48,51,53	0
2	CA	A	601	1/1	0.99	0.20	-0.98	39,39,39,39	0
6	IOD	A	610	1/1	0.99	0.04	-1.03	62,62,62,62	0
6	IOD	A	617	1/1	1.00	0.06	-2.13	56,56,56,56	0
6	IOD	A	616	1/1	1.00	0.05	-2.52	44,44,44,44	0
6	IOD	A	611	1/1	0.99	0.04	-2.82	67,67,67,67	0
6	IOD	A	609	1/1	0.98	0.06	-2.97	63,63,63,63	0
6	IOD	A	614	1/1	0.95	0.07	-	67,67,67,67	1
6	IOD	A	613	1/1	0.98	0.10	-	63,63,63,63	0
4	NAG	A	608	14/15	0.86	0.23	-	50,52,58,59	0
6	IOD	A	618	1/1	1.00	0.02	-	65,65,65,65	0
8	EDO	A	622	4/4	0.90	0.17	-	55,55,57,57	0
6	IOD	A	615	1/1	0.97	0.37	-	60,60,60,60	1
4	NAG	A	603	14/15	0.70	0.46	-	46,54,59,66	0

6.5 Other polymers [i](#)

There are no such residues in this entry.