



# wwPDB X-ray Structure Validation Summary Report ⓘ

Jan 31, 2016 – 09:07 PM GMT

PDB ID : 1NLM  
Title : CRYSTAL STRUCTURE OF MURG:GLCNAC COMPLEX  
Authors : Hu, Y.; Chen, L.; Ha, S.; Gross, B.; Falcone, B.; Walker, D.; Mokhtarzadeh, M.; Walker, S.  
Deposited on : 2003-01-07  
Resolution : 2.50 Å(reported)

This is a wwPDB X-ray Structure Validation Summary Report for a publicly released PDB entry.  
We welcome your comments at [validation@mail.wwpdb.org](mailto:validation@mail.wwpdb.org)  
A user guide is available at  
<http://wwpdb.org/validation/2016/XrayValidationReportHelp>  
with specific help available everywhere you see the ⓘ symbol.

---

The following versions of software and data (see [references ⓘ](#)) were used in the production of this report:

MolProbity : 4.02b-467  
Mogul : 1.7 (RC4), CSD as536be (2015)  
Xtriage (Phenix) : **NOT EXECUTED**  
EDS : **NOT EXECUTED**  
Percentile statistics : 20151230.v01 (using entries in the PDB archive December 30th 2015)  
Ideal geometry (proteins) : Engh & Huber (2001)  
Ideal geometry (DNA, RNA) : Parkinson et al. (1996)  
Validation Pipeline (wwPDB-VP) : trunk26865

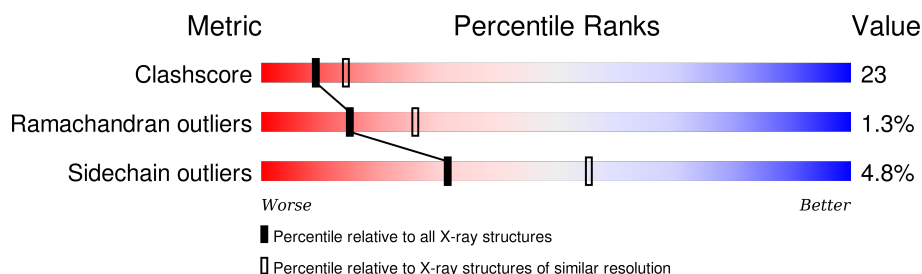
# 1 Overall quality at a glance

The following experimental techniques were used to determine the structure:

*X-RAY DIFFRACTION*

The reported resolution of this entry is 2.50 Å.

Percentile scores (ranging between 0-100) for global validation metrics of the entry are shown in the following graphic. The table shows the number of entries on which the scores are based.



Metric	Whole archive (#Entries)	Similar resolution (#Entries, resolution range(Å))
Clashscore	102246	4242 (2.50-2.50)
Ramachandran outliers	100387	4156 (2.50-2.50)
Sidechain outliers	100360	4158 (2.50-2.50)

The table below summarises the geometric issues observed across the polymeric chains and their fit to the electron density. The red, orange, yellow and green segments on the lower bar indicate the fraction of residues that contain outliers for  $\geq 3$ , 2, 1 and 0 types of geometric quality criteria. A grey segment represents the fraction of residues that are not modelled. The numeric value for each fraction is indicated below the corresponding segment, with a dot representing fractions  $\leq 5\%$ . The upper red bar (where present) indicates the fraction of residues that have poor fit to the electron density. The numeric value is given above the bar.

Note EDS was not executed.

Mol	Chain	Length	Quality of chain
1	A	364	 64% 30% . .
1	B	364	 57% 36% . . .

## 2 Entry composition

There are 4 unique types of molecules in this entry. The entry contains 5478 atoms, of which 0 are hydrogens and 0 are deuteriums.

In the tables below, the ZeroOcc column contains the number of atoms modelled with zero occupancy, the AltConf column contains the number of residues with at least one atom in alternate conformation and the Trace column contains the number of residues modelled with at most 2 atoms.

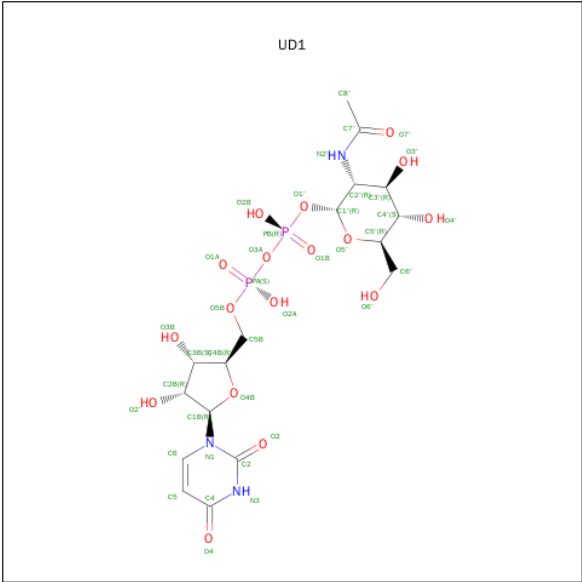
- Molecule 1 is a protein called UDP-N-acetylglucosamine--N-acetylmuramyl-(pentapeptide) pyrophosphoryl-undecaprenol N-acetylglucosamine transferase.

Mol	Chain	Residues	Atoms					ZeroOcc	AltConf	Trace
1	A	350	Total	C	N	O	S	0	0	0
			2631	1671	483	466	11			
1	B	350	Total	C	N	O	S	0	0	0
			2631	1671	483	466	11			

There are 20 discrepancies between the modelled and reference sequences:

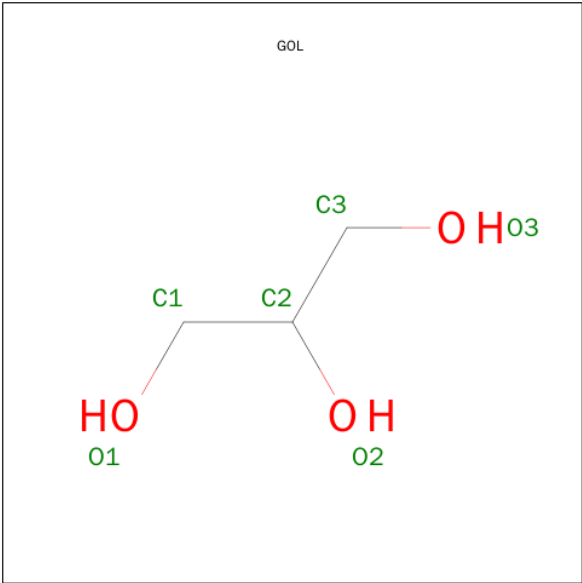
Chain	Residue	Modelled	Actual	Comment	Reference
A	1	MET	-	CLONING ARTIFACT	UNP P17443
A	2	MET	-	CLONING ARTIFACT	UNP P17443
A	357	LEU	-	CLONING ARTIFACT	UNP P17443
A	358	GLU	-	CLONING ARTIFACT	UNP P17443
A	359	HIS	-	CLONING ARTIFACT	UNP P17443
A	360	HIS	-	CLONING ARTIFACT	UNP P17443
A	361	HIS	-	CLONING ARTIFACT	UNP P17443
A	362	HIS	-	CLONING ARTIFACT	UNP P17443
A	363	HIS	-	CLONING ARTIFACT	UNP P17443
A	364	HIS	-	CLONING ARTIFACT	UNP P17443
B	1	MET	-	CLONING ARTIFACT	UNP P17443
B	2	MET	-	CLONING ARTIFACT	UNP P17443
B	357	LEU	-	CLONING ARTIFACT	UNP P17443
B	358	GLU	-	CLONING ARTIFACT	UNP P17443
B	359	HIS	-	CLONING ARTIFACT	UNP P17443
B	360	HIS	-	CLONING ARTIFACT	UNP P17443
B	361	HIS	-	CLONING ARTIFACT	UNP P17443
B	362	HIS	-	CLONING ARTIFACT	UNP P17443
B	363	HIS	-	CLONING ARTIFACT	UNP P17443
B	364	HIS	-	CLONING ARTIFACT	UNP P17443

- Molecule 2 is URIDINE-DIPHOSPHATE-N-ACETYLGLUCOSAMINE (three-letter code: UD1) (formula: C<sub>17</sub>H<sub>27</sub>N<sub>3</sub>O<sub>17</sub>P<sub>2</sub>).



Mol	Chain	Residues	Atoms					ZeroOcc	AltConf
2	A	1	Total 39	C 17	N 3	O 17	P 2	0	0
2	B	1	Total 39	C 17	N 3	O 17	P 2	0	0

- Molecule 3 is GLYCEROL (three-letter code: GOL) (formula: C<sub>3</sub>H<sub>8</sub>O<sub>3</sub>).



Mol	Chain	Residues	Atoms			ZeroOcc	AltConf
3	A	1	Total	C	O	0	0
			6	3	3		
3	A	1	Total	C	O	0	0
			6	3	3		

Continued on next page...

*Continued from previous page...*

Mol	Chain	Residues	Atoms			ZeroOcc	AltConf
3	A	1	Total	C	O	0	0
			6	3	3		
3	B	1	Total	C	O	0	0
			6	3	3		

- Molecule 4 is water.

Mol	Chain	Residues	Atoms		ZeroOcc	AltConf
4	A	65	Total	O	0	0
			65	65		
4	B	49	Total	O	0	0
			49	49		



Note EDS was not executed.

- Chain B:

## 4 Data and refinement statistics

Xtriage (Phenix) and EDS were not executed - this section will therefore be incomplete.

Property	Value	Source
Space group	P 21 21 21	Depositor
Cell constants a, b, c, $\alpha$ , $\beta$ , $\gamma$	66.70 Å 83.65 Å 146.25 Å 90.00° 90.00° 90.00°	Depositor
Resolution (Å)	19.96 – 2.50	Depositor
% Data completeness (in resolution range)	89.2 (19.96-2.50)	Depositor
$R_{merge}$	(Not available)	Depositor
$R_{sym}$	(Not available)	Depositor
Refinement program	CNS 1.0	Depositor
R, $R_{free}$	0.226 , 0.283	Depositor
Estimated twinning fraction	No twinning to report.	Xtriage
Total number of atoms	5478	wwPDB-VP
Average B, all atoms (Å <sup>2</sup> )	51.0	wwPDB-VP

## 5 Model quality [i](#)

### 5.1 Standard geometry [i](#)

Bond lengths and bond angles in the following residue types are not validated in this section: GOL, UD1

The Z score for a bond length (or angle) is the number of standard deviations the observed value is removed from the expected value. A bond length (or angle) with  $|Z| > 5$  is considered an outlier worth inspection. RMSZ is the root-mean-square of all Z scores of the bond lengths (or angles).

Mol	Chain	Bond lengths		Bond angles	
		RMSZ	$\# Z  > 5$	RMSZ	$\# Z  > 5$
1	A	0.36	0/2688	0.62	0/3653
1	B	2.55	5/2688 (0.2%)	4.18	12/3653 (0.3%)
All	All	1.82	5/5376 (0.1%)	2.99	12/7306 (0.2%)

All (5) bond length outliers are listed below:

Mol	Chain	Res	Type	Atoms	Z	Observed(Å)	Ideal(Å)
1	B	211	ASP	CB-CG	-72.05	0.00	1.51
1	B	279	PHE	CD1-CE1	70.19	2.79	1.39
1	B	198	LEU	CB-CG	-52.45	0.00	1.52
1	B	198	LEU	CA-CB	46.99	2.61	1.53
1	B	211	ASP	CA-CB	45.75	2.54	1.53

The worst 5 of 12 bond angle outliers are listed below:

Mol	Chain	Res	Type	Atoms	Z	Observed(°)	Ideal(°)
1	B	211	ASP	CB-CG-OD1	-131.44	0.00	118.30
1	B	211	ASP	CB-CG-OD2	-131.44	0.00	118.30
1	B	279	PHE	CD1-CG-CD2	-91.00	0.00	118.30
1	B	198	LEU	CB-CG-CD2	-65.29	0.00	111.00
1	B	198	LEU	CB-CG-CD1	-65.29	0.00	111.00

There are no chirality outliers.

There are no planarity outliers.

### 5.2 Too-close contacts [i](#)

In the following table, the Non-H and H(model) columns list the number of non-hydrogen atoms and hydrogen atoms in the chain respectively. The H(added) column lists the number of hydrogen



atoms added and optimized by MolProbity. The Clashes column lists the number of clashes within the asymmetric unit, whereas Symm-Clashes lists symmetry related clashes.

Mol	Chain	Non-H	H(model)	H(added)	Clashes	Symm-Clashes
1	A	2631	0	2679	98	0
1	B	2631	0	2679	150	0
2	A	39	0	25	1	0
2	B	39	0	25	5	0
3	A	18	0	24	1	0
3	B	6	0	8	0	0
4	A	65	0	0	3	0
4	B	49	0	0	2	0
All	All	5478	0	5440	247	0

The all-atom clashscore is defined as the number of clashes found per 1000 atoms (including hydrogen atoms). The all-atom clashscore for this structure is 23.

The worst 5 of 247 close contacts within the same asymmetric unit are listed below, sorted by their clash magnitude.

Atom-1	Atom-2	Interatomic distance (Å)	Clash overlap (Å)
1:B:198:LEU:CG	1:B:198:LEU:HD21	1.51	1.38
1:B:198:LEU:CG	1:B:198:LEU:HD22	1.51	1.38
1:B:198:LEU:CG	1:B:198:LEU:HD23	1.51	1.38
1:B:198:LEU:CG	1:B:198:LEU:HD11	1.52	1.36
1:B:198:LEU:HD12	1:B:198:LEU:CG	1.52	1.36

There are no symmetry-related clashes.

## 5.3 Torsion angles [i](#)

### 5.3.1 Protein backbone [i](#)

In the following table, the Percentiles column shows the percent Ramachandran outliers of the chain as a percentile score with respect to all X-ray entries followed by that with respect to entries of similar resolution.

The Analysed column shows the number of residues for which the backbone conformation was analysed, and the total number of residues.

Mol	Chain	Analysed	Favoured	Allowed	Outliers	Percentiles	
1	A	348/364 (96%)	328 (94%)	16 (5%)	4 (1%)	17	31
1	B	348/364 (96%)	317 (91%)	26 (8%)	5 (1%)	14	24

*Continued on next page...*

*Continued from previous page...*

Mol	Chain	Analysed	Favoured	Allowed	Outliers	Percentiles	
All	All	696/728 (96%)	645 (93%)	42 (6%)	9 (1%)	15	26

5 of 9 Ramachandran outliers are listed below:

Mol	Chain	Res	Type
1	A	64	SER
1	A	133	LEU
1	B	49	ASP
1	B	155	ASN
1	B	35	TRP

### 5.3.2 Protein sidechains ⓘ

In the following table, the Percentiles column shows the percent sidechain outliers of the chain as a percentile score with respect to all X-ray entries followed by that with respect to entries of similar resolution.

The Analysed column shows the number of residues for which the sidechain conformation was analysed, and the total number of residues.

Mol	Chain	Analysed	Rotameric	Outliers	Percentiles	
1	A	261/273 (96%)	249 (95%)	12 (5%)	33	57
1	B	261/273 (96%)	248 (95%)	13 (5%)	30	53
All	All	522/546 (96%)	497 (95%)	25 (5%)	31	55

5 of 25 residues with a non-rotameric sidechain are listed below:

Mol	Chain	Res	Type
1	A	307	GLN
1	B	16	THR
1	B	307	GLN
1	B	10	MET
1	B	30	LEU

Some sidechains can be flipped to improve hydrogen bonding and reduce clashes. 5 of 29 such sidechains are listed below:

Mol	Chain	Res	Type
1	A	307	GLN
1	B	127	GLN
1	B	292	ASN

*Continued on next page...*

*Continued from previous page...*

Mol	Chain	Res	Type
1	B	19	HIS
1	B	128	ASN

### 5.3.3 RNA ⓘ

There are no RNA molecules in this entry.

## 5.4 Non-standard residues in protein, DNA, RNA chains ⓘ

There are no non-standard protein/DNA/RNA residues in this entry.

## 5.5 Carbohydrates ⓘ

There are no carbohydrates in this entry.

## 5.6 Ligand geometry ⓘ

6 ligands are modelled in this entry.

In the following table, the Counts columns list the number of bonds (or angles) for which Mogul statistics could be retrieved, the number of bonds (or angles) that are observed in the model and the number of bonds (or angles) that are defined in the chemical component dictionary. The Link column lists molecule types, if any, to which the group is linked. The Z score for a bond length (or angle) is the number of standard deviations the observed value is removed from the expected value. A bond length (or angle) with  $|Z| > 2$  is considered an outlier worth inspection. RMSZ is the root-mean-square of all Z scores of the bond lengths (or angles).

Mol	Type	Chain	Res	Link	Bond lengths			Bond angles		
					Counts	RMSZ	# $ Z  > 2$	Counts	RMSZ	# $ Z  > 2$
2	UD1	A	401	-	32,41,41	0.91	1 (3%)	46,62,62	2.39	6 (13%)
3	GOL	A	501	-	5,5,5	0.88	0	5,5,5	0.31	0
3	GOL	A	502	-	5,5,5	1.19	0	5,5,5	0.37	0
3	GOL	A	503	-	5,5,5	1.25	0	5,5,5	0.43	0
2	UD1	B	402	-	32,41,41	0.86	1 (3%)	46,62,62	2.39	6 (13%)
3	GOL	B	504	-	5,5,5	1.23	0	5,5,5	0.31	0

In the following table, the Chirals column lists the number of chiral outliers, the number of chiral centers analysed, the number of these observed in the model and the number defined in the chemical component dictionary. Similar counts are reported in the Torsion and Rings columns. '-' means no outliers of that kind were identified.

Mol	Type	Chain	Res	Link	Chirals	Torsions	Rings
2	UD1	A	401	-	-	1/22/63/63	0/3/3/3
3	GOL	A	501	-	-	0/4/4/4	0/0/0/0
3	GOL	A	502	-	-	0/4/4/4	0/0/0/0
3	GOL	A	503	-	-	0/4/4/4	0/0/0/0
2	UD1	B	402	-	-	0/22/63/63	0/3/3/3
3	GOL	B	504	-	-	0/4/4/4	0/0/0/0

All (2) bond length outliers are listed below:

Mol	Chain	Res	Type	Atoms	Z	Observed(Å)	Ideal(Å)
2	B	402	UD1	C4-N3	2.62	1.38	1.33
2	A	401	UD1	C4-N3	2.91	1.38	1.33

The worst 5 of 12 bond angle outliers are listed below:

Mol	Chain	Res	Type	Atoms	Z	Observed(°)	Ideal(°)
2	A	401	UD1	PB-O3A-PA	-6.50	114.47	132.73
2	B	402	UD1	PB-O3A-PA	-5.38	117.63	132.73
2	B	402	UD1	C5-C4-N3	-3.31	114.62	123.12
2	A	401	UD1	C5-C4-N3	-3.30	114.66	123.12
2	A	401	UD1	O5'-C1'-O1'	-2.13	108.55	111.36

There are no chirality outliers.

All (1) torsion outliers are listed below:

Mol	Chain	Res	Type	Atoms
2	A	401	UD1	C8'-C7'-N2'-C2'

There are no ring outliers.

3 monomers are involved in 7 short contacts:

Mol	Chain	Res	Type	Clashes	Symm-Clashes
2	A	401	UD1	1	0
3	A	502	GOL	1	0
2	B	402	UD1	5	0

## 5.7 Other polymers

There are no such residues in this entry.

## 5.8 Polymer linkage issues ⓘ

There are no chain breaks in this entry.

## 6 Fit of model and data ⓘ

### 6.1 Protein, DNA and RNA chains ⓘ

EDS was not executed - this section will therefore be empty.

### 6.2 Non-standard residues in protein, DNA, RNA chains ⓘ

EDS was not executed - this section will therefore be empty.

### 6.3 Carbohydrates ⓘ

EDS was not executed - this section will therefore be empty.

### 6.4 Ligands ⓘ

EDS was not executed - this section will therefore be empty.

### 6.5 Other polymers ⓘ

EDS was not executed - this section will therefore be empty.