



# Full wwPDB X-ray Structure Validation Report ⓘ

Feb 1, 2016 – 04:37 AM GMT

PDB ID : 2NMT  
Title : MYRISTOYL-COA:PROTEIN N-MYRISTOYLTRANSFERASE BOUND  
TO MYRISTOYL-COA AND PEPTIDE ANALOGS  
Authors : Fuetterer, K.; Bhatnagar, R.S.; Waksman, G.  
Deposited on : 1998-07-14  
Resolution : 2.90 Å(reported)

This is a Full wwPDB X-ray Structure Validation Report for a publicly released PDB entry.  
We welcome your comments at [validation@mail.wwpdb.org](mailto:validation@mail.wwpdb.org)  
A user guide is available at  
<http://wwpdb.org/validation/2016/XrayValidationReportHelp>  
with specific help available everywhere you see the ⓘ symbol.

---

The following versions of software and data (see [references ⓘ](#)) were used in the production of this report:

MolProbity : 4.02b-467  
Mogul : 1.7 (RC4), CSD as536be (2015)  
Xtriage (Phenix) : **NOT EXECUTED**  
EDS : **NOT EXECUTED**  
Percentile statistics : 20151230.v01 (using entries in the PDB archive December 30th 2015)  
Ideal geometry (proteins) : Engh & Huber (2001)  
Ideal geometry (DNA, RNA) : Parkinson et al. (1996)  
Validation Pipeline (wwPDB-VP) : trunk26865

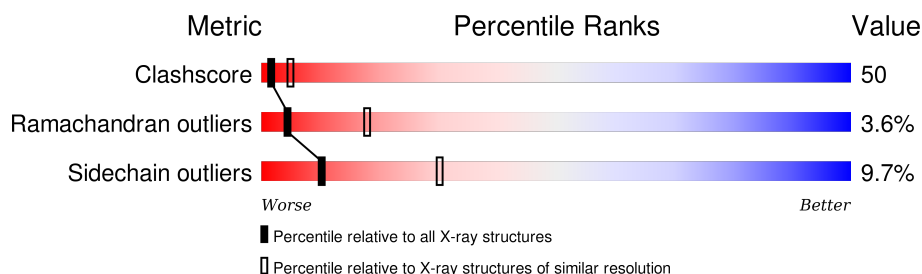
# 1 Overall quality at a glance

The following experimental techniques were used to determine the structure:

## *X-RAY DIFFRACTION*

The reported resolution of this entry is 2.90 Å.

Percentile scores (ranging between 0-100) for global validation metrics of the entry are shown in the following graphic. The table shows the number of entries on which the scores are based.



Metric	Whole archive (#Entries)	Similar resolution (#Entries, resolution range(Å))
Clashscore	102246	1668 (2.90-2.90)
Ramachandran outliers	100387	1630 (2.90-2.90)
Sidechain outliers	100360	1632 (2.90-2.90)

The table below summarises the geometric issues observed across the polymeric chains and their fit to the electron density. The red, orange, yellow and green segments on the lower bar indicate the fraction of residues that contain outliers for  $\geq 3$ , 2, 1 and 0 types of geometric quality criteria. A grey segment represents the fraction of residues that are not modelled. The numeric value for each fraction is indicated below the corresponding segment, with a dot representing fractions  $\leq 5\%$ . The upper red bar (where present) indicates the fraction of residues that have poor fit to the electron density. The numeric value is given above the bar.

Note EDS was not executed.

Mol	Chain	Length	Quality of chain
1	A	422	

The following table lists non-polymeric compounds, carbohydrate monomers and non-standard residues in protein, DNA, RNA chains that are outliers for geometric or electron-density-fit criteria:

Mol	Type	Chain	Res	Chirality	Geometry	Clashes	Electron density
4	GOL	A	804	-	-	X	-
4	GOL	A	807	-	-	X	-

## 2 Entry composition [i](#)

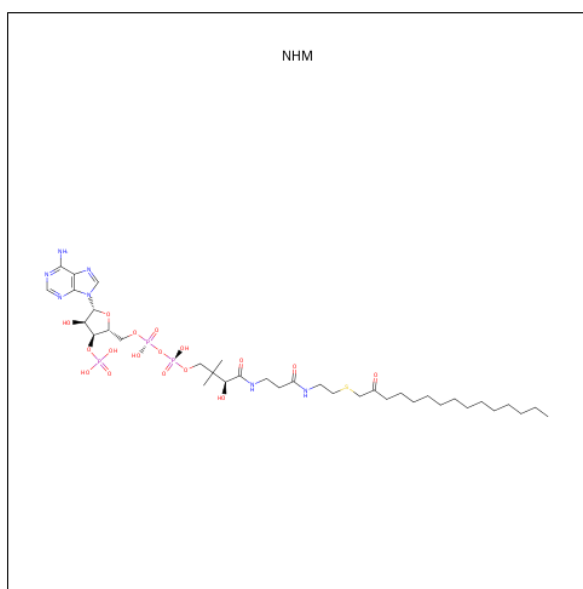
There are 5 unique types of molecules in this entry. The entry contains 3601 atoms, of which 0 are hydrogens and 0 are deuteriums.

In the tables below, the ZeroOcc column contains the number of atoms modelled with zero occupancy, the AltConf column contains the number of residues with at least one atom in alternate conformation and the Trace column contains the number of residues modelled with at most 2 atoms.

- Molecule 1 is a protein called MYRISTOYL-COA\;:PROTEIN N-MYRISTOYLTRANSFERASE.

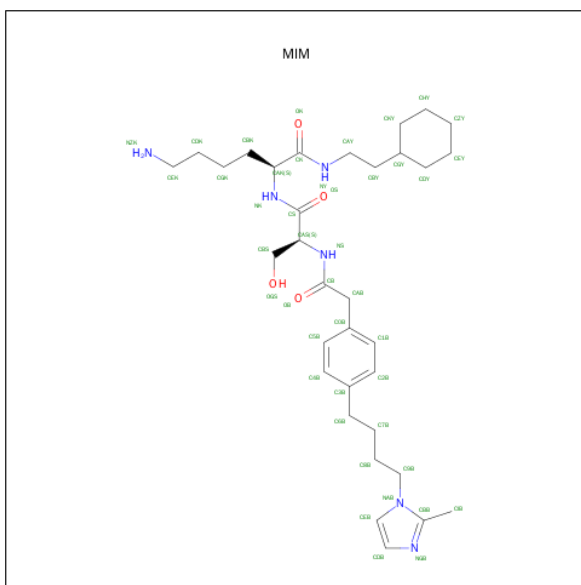
Mol	Chain	Residues	Atoms					ZeroOcc	AltConf	Trace
			Total	C	N	O	S			
1	A	422	3388	2190	558	630	10	0	0	0

- Molecule 2 is S-(2-OXO)PENTADECYLCOA (three-letter code: NHM) (formula:  $C_{36}H_{64}N_7O_{17}P_3S$ ).



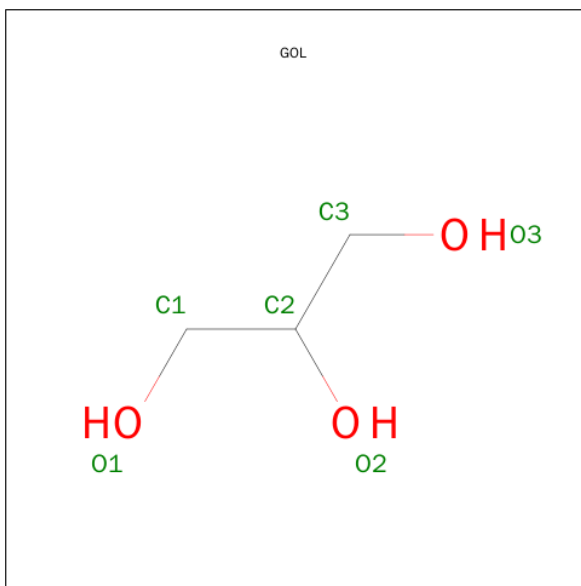
Mol	Chain	Residues	Atoms						ZeroOcc	AltConf
			Total	C	N	O	P	S		
2	A	1	64	36	7	17	3	1	0	0

- Molecule 3 is [CYCLOHEXYLETHYL]-[[[4-[2-METHYL-1-IMIDAZOLYL-BUTYL]PHENYL]ACETYL]-SERYL]-LYSINYL]-AMINE (three-letter code: MIM) (formula:  $C_{33}H_{52}N_6O_4$ ).



Mol	Chain	Residues	Atoms				ZeroOcc	AltConf
3	A	1	Total	C	N	O	0	0
			43	33	6	4		

- Molecule 4 is GLYCEROL (three-letter code: GOL) (formula:  $\text{C}_3\text{H}_8\text{O}_3$ ).



Mol	Chain	Residues	Atoms			ZeroOcc	AltConf
4	A	1	Total 6	C 3	O 3	0	0
4	A	1	Total 6	C 3	O 3	0	0
4	A	1	Total 6	C 3	O 3	0	0

*Continued on next page...*

*Continued from previous page...*

Mol	Chain	Residues	Atoms			ZeroOcc	AltConf
4	A	1	Total	C	O	0	0
			6	3	3		
4	A	1	Total	C	O	0	0
			6	3	3		
4	A	1	Total	C	O	0	0
			6	3	3		
4	A	1	Total	C	O	0	0
			6	3	3		
4	A	1	Total	C	O	0	0
			6	3	3		
4	A	1	Total	C	O	0	0
			6	3	3		
4	A	1	Total	C	O	0	0
			6	3	3		
4	A	1	Total	C	O	0	0
			6	3	3		

- Molecule 5 is water.

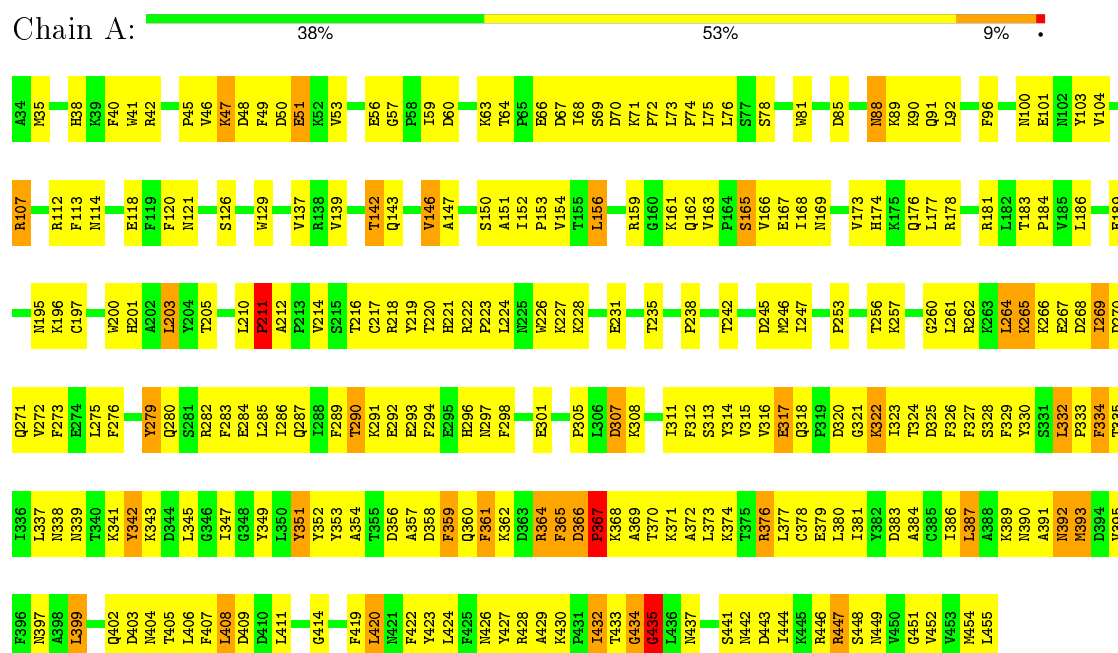
Mol	Chain	Residues	Atoms		ZeroOcc	AltConf
5	A	34	Total	O	0	0
			34	34		

### 3 Residue-property plots

These plots are drawn for all protein, RNA and DNA chains in the entry. The first graphic for a chain summarises the proportions of errors displayed in the second graphic. The second graphic shows the sequence view annotated by issues in geometry and electron density. Residues are color-coded according to the number of geometric quality criteria for which they contain at least one outlier: green = 0, yellow = 1, orange = 2 and red = 3 or more. A red dot above a residue indicates a poor fit to the electron density ( $RSRZ > 2$ ). Stretches of 2 or more consecutive residues without any outlier are shown as a green connector. Residues present in the sample, but not in the model, are shown in grey.

Note EDS was not executed.

- Molecule 1: MYRISTOYL-COA\:\PROTEIN N-MYRISTOYLTRANSFERASE



## 4 Data and refinement statistics

Xtriage (Phenix) and EDS were not executed - this section will therefore be incomplete.

Property	Value	Source
Space group	P 31 2 1	Depositor
Cell constants a, b, c, $\alpha$ , $\beta$ , $\gamma$	105.40 Å   105.40 Å   106.70 Å 90.00°   90.00°   120.00°	Depositor
Resolution (Å)	30.00 – 2.90	Depositor
% Data completeness (in resolution range)	91.7 (30.00-2.90)	Depositor
$R_{merge}$	0.04	Depositor
$R_{sym}$	0.04	Depositor
Refinement program	CNS 0.3	Depositor
R, $R_{free}$	0.228 , 0.297	Depositor
Estimated twinning fraction	No twinning to report.	Xtriage
Total number of atoms	3601	wwPDB-VP
Average B, all atoms (Å <sup>2</sup> )	55.0	wwPDB-VP

## 5 Model quality

### 5.1 Standard geometry

Bond lengths and bond angles in the following residue types are not validated in this section: NHM, GOL, MIM

The Z score for a bond length (or angle) is the number of standard deviations the observed value is removed from the expected value. A bond length (or angle) with  $|Z| > 5$  is considered an outlier worth inspection. RMSZ is the root-mean-square of all Z scores of the bond lengths (or angles).

Mol	Chain	Bond lengths		Bond angles	
		RMSZ	$\# Z  > 5$	RMSZ	$\# Z  > 5$
1	A	0.74	0/3477	0.99	5/4726 (0.1%)

Chiral center outliers are detected by calculating the chiral volume of a chiral center and verifying if the center is modelled as a planar moiety or with the opposite hand. A planarity outlier is detected by checking planarity of atoms in a peptide group, atoms in a mainchain group or atoms of a sidechain that are expected to be planar.

Mol	Chain	#Chirality outliers	#Planarity outliers
1	A	0	2

There are no bond length outliers.

All (5) bond angle outliers are listed below:

Mol	Chain	Res	Type	Atoms	Z	Observed( $^{\circ}$ )	Ideal( $^{\circ}$ )
1	A	399	LEU	N-CA-C	6.85	129.49	111.00
1	A	435	GLY	N-CA-C	6.65	129.74	113.10
1	A	434	GLY	N-CA-C	-5.77	98.69	113.10
1	A	290	THR	N-CA-C	-5.68	95.67	111.00
1	A	335	THR	N-CA-C	-5.56	95.98	111.00

There are no chirality outliers.

All (2) planarity outliers are listed below:

Mol	Chain	Res	Type	Group
1	A	279	TYR	Sidechain
1	A	342	TYR	Sidechain



## 5.2 Too-close contacts ⓘ

In the following table, the Non-H and H(model) columns list the number of non-hydrogen atoms and hydrogen atoms in the chain respectively. The H(added) column lists the number of hydrogen atoms added and optimized by MolProbity. The Clashes column lists the number of clashes within the asymmetric unit, whereas Symm-Clashes lists symmetry related clashes.

Mol	Chain	Non-H	H(model)	H(added)	Clashes	Symm-Clashes
1	A	3388	0	3257	345	2
2	A	64	0	60	8	0
3	A	43	0	52	6	0
4	A	72	0	95	14	4
5	A	34	0	0	6	0
All	All	3601	0	3464	348	4

The all-atom clashscore is defined as the number of clashes found per 1000 atoms (including hydrogen atoms). The all-atom clashscore for this structure is 50.

All (348) close contacts within the same asymmetric unit are listed below, sorted by their clash magnitude.

Atom-1	Atom-2	Interatomic distance (Å)	Clash overlap (Å)
1:A:383:ASP:O	1:A:387:LEU:HD23	1.64	0.96
1:A:316:VAL:HB	1:A:325:ASP:HB2	1.45	0.95
1:A:47:LYS:HB3	1:A:212:ALA:CB	2.02	0.90
1:A:269:ILE:CG2	1:A:291:LYS:HE3	2.02	0.90
1:A:364:ARG:HH11	1:A:364:ARG:HA	1.35	0.89
1:A:159:ARG:NH2	1:A:430:LYS:HB2	1.88	0.89
1:A:432:ILE:HG13	1:A:449:ASN:HB2	1.54	0.89
1:A:405:THR:CG2	1:A:444:ILE:HA	2.03	0.88
1:A:56:GLU:OE1	1:A:159:ARG:HG3	1.72	0.88
1:A:47:LYS:HB3	1:A:212:ALA:HB2	1.53	0.87
1:A:284:GLU:HB2	1:A:432:ILE:HD12	1.61	0.81
1:A:367:PRO:O	1:A:370:THR:HG22	1.81	0.80
1:A:269:ILE:HG21	1:A:291:LYS:HE3	1.64	0.79
1:A:88:ASN:HD22	1:A:89:LYS:N	1.81	0.79
1:A:361:PHE:CE2	1:A:369:ALA:HB2	2.18	0.78
1:A:404:ASN:HA	1:A:407:PHE:CE2	2.21	0.76
1:A:432:ILE:HG13	1:A:449:ASN:CB	2.15	0.76
1:A:359:PHE:HD1	1:A:360:GLN:N	1.84	0.75
1:A:64:THR:HG23	1:A:66:GLU:HG3	1.68	0.75
1:A:269:ILE:HG22	1:A:291:LYS:HE3	1.69	0.75
1:A:85:ASP:H	1:A:91:GLN:NE2	1.85	0.74
1:A:283:PHE:HB3	1:A:449:ASN:O	1.88	0.74

*Continued on next page...*

*Continued from previous page...*

Atom-1	Atom-2	Interatomic distance (Å)	Clash overlap (Å)
1:A:356:ASP:HA	1:A:359:PHE:CZ	2.22	0.73
1:A:74:PRO:C	1:A:75:LEU:HD12	2.08	0.73
1:A:47:LYS:HZ3	1:A:428:ARG:HA	1.54	0.73
1:A:152:ILE:O	1:A:152:ILE:HD12	1.88	0.73
1:A:222:ARG:NH1	1:A:223:PRO:O	2.22	0.73
1:A:268:ASP:O	1:A:272:VAL:HG23	1.89	0.72
1:A:47:LYS:NZ	1:A:428:ARG:HA	2.04	0.72
1:A:197:CYS:HB3	4:A:803:GOL:H12	1.72	0.72
1:A:364:ARG:HD3	1:A:365:PHE:H	1.55	0.72
1:A:405:THR:HG21	1:A:444:ILE:HA	1.70	0.71
1:A:70:ASP:OD1	1:A:196:LYS:NZ	2.22	0.71
1:A:323:ILE:HD12	1:A:323:ILE:O	1.91	0.71
1:A:214:VAL:HG12	1:A:432:ILE:HG23	1.73	0.70
1:A:405:THR:HG22	1:A:444:ILE:HA	1.72	0.70
1:A:364:ARG:NH1	1:A:364:ARG:HA	2.06	0.70
1:A:114:ASN:HB3	1:A:333:PRO:HG2	1.74	0.70
1:A:47:LYS:HG2	1:A:48:ASP:N	2.06	0.69
1:A:296:HIS:CG	4:A:804:GOL:O2	2.45	0.69
1:A:60:ASP:H	1:A:426:ASN:HD21	1.39	0.68
1:A:266:LYS:O	1:A:269:ILE:HD13	1.92	0.68
1:A:403:ASP:OD2	1:A:447:ARG:HD2	1.92	0.68
1:A:432:ILE:HD11	1:A:449:ASN:C	2.13	0.68
1:A:291:LYS:O	1:A:294:PHE:HB3	1.93	0.68
1:A:364:ARG:C	1:A:366:ASP:H	1.97	0.68
1:A:228:LYS:HE3	1:A:342:TYR:CD2	2.30	0.67
1:A:205:THR:HB	1:A:420:LEU:HD21	1.74	0.67
1:A:246:MET:HA	1:A:246:MET:HE3	1.76	0.67
1:A:220:THR:HG21	1:A:408:LEU:HD13	1.77	0.67
1:A:296:HIS:HA	5:A:1043:HOH:O	1.95	0.67
1:A:137:VAL:HB	1:A:147:ALA:HB3	1.77	0.67
1:A:286:ILE:HG22	1:A:451:GLY:HA3	1.77	0.66
1:A:358:ASP:O	1:A:361:PHE:HB3	1.95	0.66
1:A:404:ASN:HA	1:A:407:PHE:CZ	2.29	0.66
1:A:264:LEU:HD12	1:A:265:LYS:H	1.60	0.66
1:A:289:PHE:HE2	1:A:297:ASN:ND2	1.93	0.66
1:A:47:LYS:HG2	1:A:48:ASP:H	1.59	0.66
1:A:370:THR:HG23	1:A:371:LYS:N	2.11	0.66
1:A:85:ASP:H	1:A:91:GLN:HE22	1.42	0.65
1:A:391:ALA:O	1:A:392:ASN:HB2	1.94	0.65
1:A:432:ILE:HG13	1:A:433:THR:H	1.62	0.65
1:A:289:PHE:HE2	1:A:297:ASN:HD22	1.45	0.65

*Continued on next page...*

*Continued from previous page...*

Atom-1	Atom-2	Interatomic distance (Å)	Clash overlap (Å)
1:A:317:GLU:OE2	1:A:321:GLY:HA2	1.97	0.64
1:A:361:PHE:HD2	1:A:362:LYS:N	1.95	0.64
1:A:377:LEU:HA	1:A:380:LEU:HD12	1.80	0.64
1:A:364:ARG:HG3	1:A:366:ASP:H	1.63	0.64
1:A:359:PHE:CD1	1:A:360:GLN:N	2.66	0.64
1:A:50:ASP:CG	1:A:51:GLU:H	2.01	0.64
1:A:285:LEU:HB3	1:A:432:ILE:HD13	1.79	0.64
1:A:376:ARG:O	1:A:380:LEU:HG	1.97	0.64
1:A:321:GLY:O	1:A:323:ILE:N	2.31	0.64
1:A:205:THR:HB	1:A:420:LEU:CD2	2.28	0.63
1:A:59:ILE:CD1	1:A:428:ARG:HG2	2.27	0.63
1:A:323:ILE:HD12	1:A:323:ILE:C	2.18	0.63
1:A:101:GLU:HA	1:A:112:ARG:HH21	1.61	0.63
1:A:367:PRO:HA	1:A:370:THR:HG22	1.80	0.63
1:A:406:LEU:HD11	1:A:447:ARG:HH11	1.64	0.63
1:A:266:LYS:HA	1:A:269:ILE:HD13	1.81	0.63
1:A:361:PHE:CD2	1:A:369:ALA:HB2	2.34	0.63
1:A:260:GLY:O	1:A:316:VAL:HA	1.99	0.63
1:A:268:ASP:HB3	1:A:272:VAL:CG2	2.28	0.63
1:A:56:GLU:OE2	1:A:430:LYS:HG3	1.99	0.62
1:A:296:HIS:ND1	4:A:804:GOL:O2	2.32	0.62
1:A:261:LEU:HD12	5:A:1060:HOH:O	1.99	0.62
1:A:165:SER:HB3	1:A:201:HIS:O	1.99	0.62
1:A:90:LYS:HD3	1:A:90:LYS:O	2.00	0.62
1:A:223:PRO:CG	3:A:700:MIM:HEY1	2.29	0.62
1:A:96:PHE:C	1:A:96:PHE:CD2	2.74	0.62
1:A:227:LYS:HD3	1:A:247:ILE:HD11	1.80	0.61
1:A:59:ILE:H	1:A:426:ASN:ND2	1.98	0.61
1:A:381:ILE:HG22	1:A:411:LEU:HD23	1.81	0.61
1:A:56:GLU:CG	1:A:430:LYS:HG3	2.30	0.61
1:A:64:THR:HG23	1:A:66:GLU:CG	2.30	0.61
1:A:253:PRO:HG2	1:A:257:LYS:HE2	1.81	0.61
1:A:203:LEU:HD23	1:A:423:TYR:O	2.00	0.61
1:A:287:GLN:HB3	1:A:289:PHE:CE1	2.36	0.61
1:A:315:VAL:HG23	1:A:325:ASP:O	2.01	0.61
1:A:222:ARG:HH11	1:A:222:ARG:HG3	1.66	0.60
1:A:433:THR:H	1:A:449:ASN:HB2	1.65	0.60
1:A:435:GLY:H	1:A:448:SER:HB2	1.65	0.60
1:A:68:ILE:HB	1:A:196:LYS:HE2	1.82	0.60
1:A:361:PHE:CD2	1:A:361:PHE:C	2.74	0.60
1:A:246:MET:HA	1:A:246:MET:CE	2.31	0.60

*Continued on next page...*

*Continued from previous page...*

Atom-1	Atom-2	Interatomic distance (Å)	Clash overlap (Å)
1:A:316:VAL:HB	1:A:325:ASP:CB	2.25	0.60
1:A:313:SER:HB2	4:A:805:GOL:O2	2.02	0.60
1:A:156:LEU:HD22	1:A:165:SER:OG	2.02	0.59
1:A:159:ARG:CZ	1:A:430:LYS:HB2	2.31	0.59
1:A:432:ILE:HD11	1:A:449:ASN:O	2.02	0.59
1:A:269:ILE:HG21	1:A:291:LYS:CE	2.32	0.59
1:A:364:ARG:HG3	1:A:366:ASP:N	2.17	0.59
1:A:356:ASP:HA	1:A:359:PHE:CE2	2.36	0.59
1:A:224:LEU:HD12	1:A:393:MET:O	2.02	0.59
1:A:96:PHE:HA	1:A:120:PHE:HE1	1.68	0.58
1:A:139:VAL:CG1	1:A:142:THR:HG23	2.32	0.58
1:A:142:THR:O	1:A:143:GLN:HB2	2.02	0.58
1:A:296:HIS:HB2	4:A:804:GOL:H32	1.85	0.58
1:A:290:THR:HG23	1:A:293:GLU:CD	2.24	0.58
1:A:85:ASP:HB3	1:A:91:GLN:HE22	1.68	0.58
1:A:235:THR:HG22	3:A:700:MIM:HG Y	1.84	0.58
1:A:270:ASP:OD1	1:A:291:LYS:NZ	2.34	0.58
1:A:369:ALA:O	1:A:372:ALA:HB3	2.03	0.57
1:A:174:HIS:HD2	1:A:176:GLN:H	1.52	0.57
1:A:370:THR:CG2	1:A:371:LYS:N	2.67	0.57
1:A:173:VAL:HG23	2:A:500:NHM:H141	1.87	0.56
1:A:227:LYS:HB2	1:A:247:ILE:HD11	1.86	0.56
1:A:432:ILE:HG13	1:A:433:THR:N	2.21	0.56
1:A:265:LYS:HD3	1:A:268:ASP:OD2	2.05	0.56
1:A:88:ASN:HD22	1:A:89:LYS:H	1.51	0.56
1:A:64:THR:HG22	1:A:67:ASP:OD2	2.05	0.56
1:A:317:GLU:OE2	4:A:810:GOL:H12	2.05	0.56
1:A:290:THR:HG23	1:A:293:GLU:HG2	1.88	0.56
1:A:56:GLU:CD	1:A:430:LYS:HG3	2.27	0.55
1:A:327:PHE:HA	1:A:353:TYR:HA	1.89	0.55
1:A:407:PHE:CE1	1:A:408:LEU:HD23	2.41	0.55
1:A:315:VAL:HA	1:A:325:ASP:O	2.07	0.55
1:A:433:THR:O	1:A:449:ASN:N	2.40	0.55
1:A:326:PHE:O	1:A:354:ALA:N	2.34	0.55
1:A:437:ASN:HB2	1:A:441:SER:OG	2.07	0.55
1:A:63:LYS:HB2	1:A:200:TRP:CZ3	2.41	0.55
1:A:205:THR:O	2:A:500:NHM:HP2	2.07	0.55
1:A:126:SER:HA	1:A:296:HIS:NE2	2.21	0.55
1:A:45:PRO:O	1:A:426:ASN:HA	2.07	0.54
1:A:314:TYR:CZ	1:A:387:LEU:HD12	2.43	0.54
1:A:75:LEU:HD11	1:A:81:TRP:CZ2	2.42	0.54

*Continued on next page...*

*Continued from previous page...*

Atom-1	Atom-2	Interatomic distance (Å)	Clash overlap (Å)
1:A:174:HIS:CD2	1:A:176:GLN:H	2.26	0.54
1:A:284:GLU:HB2	1:A:449:ASN:HB3	1.88	0.54
1:A:256:THR:HG23	5:A:1036:HOH:O	2.06	0.54
1:A:64:THR:O	1:A:67:ASP:HB2	2.06	0.54
1:A:75:LEU:HD11	1:A:81:TRP:CE2	2.43	0.54
1:A:126:SER:HA	1:A:296:HIS:CD2	2.43	0.53
1:A:330:TYR:CE1	1:A:349:TYR:HB2	2.43	0.53
1:A:284:GLU:CB	1:A:432:ILE:HD12	2.36	0.53
1:A:101:GLU:HA	1:A:112:ARG:NH2	2.22	0.53
1:A:316:VAL:CB	1:A:325:ASP:HB2	2.30	0.53
1:A:280:GLN:NE2	1:A:286:ILE:HB	2.24	0.53
1:A:337:LEU:O	1:A:338:ASN:HB2	2.08	0.53
1:A:428:ARG:HG3	1:A:428:ARG:HH11	1.72	0.53
1:A:269:ILE:HG22	1:A:270:ASP:N	2.23	0.53
1:A:201:HIS:CD2	4:A:807:GOL:H12	2.44	0.53
1:A:139:VAL:HG13	1:A:142:THR:HG23	1.90	0.53
1:A:454:MET:HA	1:A:454:MET:HE3	1.91	0.53
1:A:452:VAL:HA	5:A:1024:HOH:O	2.09	0.52
1:A:159:ARG:NH2	1:A:430:LYS:CB	2.68	0.52
1:A:223:PRO:HG2	3:A:700:MIM:HEY1	1.91	0.52
1:A:411:LEU:HD12	1:A:411:LEU:N	2.23	0.52
1:A:57:GLY:H	1:A:428:ARG:HB2	1.74	0.52
1:A:406:LEU:HD11	1:A:447:ARG:NH1	2.24	0.52
1:A:433:THR:OG1	1:A:449:ASN:N	2.43	0.52
1:A:364:ARG:HD3	1:A:365:PHE:N	2.23	0.52
1:A:402:GLN:N	1:A:448:SER:HB3	2.25	0.52
1:A:113:PHE:CE2	1:A:332:LEU:HD13	2.45	0.52
1:A:367:PRO:HA	1:A:370:THR:CG2	2.40	0.51
1:A:223:PRO:HG3	3:A:700:MIM:HEY1	1.91	0.51
1:A:205:THR:HG22	1:A:422:PHE:HA	1.93	0.51
1:A:201:HIS:NE2	4:A:807:GOL:H31	2.25	0.51
1:A:347:ILE:HG23	1:A:395:VAL:HG13	1.92	0.51
1:A:393:MET:HE2	1:A:393:MET:HA	1.93	0.51
1:A:434:GLY:HA2	1:A:448:SER:OG	2.11	0.51
1:A:370:THR:CG2	1:A:371:LYS:H	2.24	0.51
1:A:74:PRO:O	1:A:75:LEU:HD12	2.11	0.51
1:A:316:VAL:HG12	1:A:316:VAL:O	2.11	0.51
1:A:311:ILE:O	4:A:805:GOL:H12	2.10	0.51
2:A:500:NHM:H5M2	2:A:500:NHM:H2A	1.93	0.51
1:A:217:CYS:HB3	1:A:399:LEU:O	2.11	0.50
1:A:290:THR:HG23	1:A:293:GLU:CG	2.41	0.50

*Continued on next page...*

*Continued from previous page...*

Atom-1	Atom-2	Interatomic distance (Å)	Clash overlap (Å)
1:A:432:ILE:CD1	1:A:449:ASN:HB3	2.41	0.50
1:A:356:ASP:CA	1:A:359:PHE:CZ	2.94	0.50
1:A:222:ARG:NH1	1:A:222:ARG:HG3	2.26	0.50
1:A:318:GLN:O	1:A:321:GLY:N	2.39	0.50
1:A:59:ILE:HG12	1:A:427:TYR:N	2.26	0.50
1:A:113:PHE:HE2	1:A:332:LEU:HD13	1.76	0.50
1:A:126:SER:O	1:A:129:TRP:HD1	1.95	0.49
1:A:268:ASP:HB3	1:A:272:VAL:HG21	1.93	0.49
1:A:70:ASP:OD1	1:A:196:LYS:CE	2.60	0.49
1:A:217:CYS:HG	1:A:422:PHE:HE1	1.60	0.49
1:A:48:ASP:OD2	1:A:50:ASP:OD1	2.31	0.49
1:A:269:ILE:O	1:A:273:PHE:N	2.30	0.49
1:A:324:THR:OG1	1:A:356:ASP:OD2	2.21	0.49
1:A:377:LEU:C	1:A:379:GLU:N	2.64	0.49
1:A:183:THR:HB	1:A:184:PRO:HD3	1.93	0.49
1:A:103:TYR:CG	1:A:104:VAL:N	2.79	0.49
1:A:47:LYS:CG	1:A:48:ASP:H	2.25	0.49
1:A:88:ASN:HD22	1:A:88:ASN:C	2.12	0.49
1:A:151:ALA:HB2	1:A:168:ILE:CD1	2.42	0.49
1:A:432:ILE:CG1	1:A:433:THR:N	2.75	0.49
1:A:201:HIS:NE2	4:A:807:GOL:H12	2.28	0.49
1:A:161:LYS:O	1:A:163:VAL:HG23	2.12	0.49
1:A:386:ILE:O	1:A:390:ASN:ND2	2.46	0.49
1:A:47:LYS:HB3	1:A:212:ALA:HB1	1.90	0.49
1:A:264:LEU:HD12	1:A:265:LYS:N	2.28	0.49
1:A:381:ILE:HD12	1:A:381:ILE:N	2.28	0.49
1:A:40:PHE:CD1	1:A:184:PRO:HB3	2.47	0.49
1:A:214:VAL:CG1	1:A:432:ILE:HG23	2.40	0.48
1:A:361:PHE:HD2	1:A:361:PHE:C	2.15	0.48
1:A:364:ARG:C	1:A:366:ASP:N	2.65	0.48
1:A:183:THR:HA	1:A:186:LEU:HD12	1.95	0.48
1:A:406:LEU:HG	1:A:447:ARG:HD3	1.95	0.48
1:A:316:VAL:HG11	1:A:325:ASP:OD2	2.12	0.48
1:A:152:ILE:HD11	1:A:167:GLU:HB3	1.95	0.48
1:A:293:GLU:O	1:A:293:GLU:HG3	2.13	0.48
1:A:282:ARG:HD2	1:A:283:PHE:CZ	2.48	0.48
1:A:405:THR:HG21	1:A:443:ASP:O	2.14	0.48
1:A:408:LEU:HD12	1:A:442:ASN:OD1	2.14	0.48
1:A:56:GLU:HA	1:A:428:ARG:O	2.13	0.47
1:A:70:ASP:OD1	1:A:196:LYS:HE3	2.14	0.47
1:A:339:ASN:OD1	1:A:341:LYS:N	2.46	0.47

*Continued on next page...*

*Continued from previous page...*

Atom-1	Atom-2	Interatomic distance (Å)	Clash overlap (Å)
1:A:285:LEU:HD12	1:A:286:ILE:N	2.29	0.47
1:A:317:GLU:HB2	1:A:323:ILE:HG22	1.97	0.47
1:A:47:LYS:HZ1	1:A:429:ALA:N	2.12	0.47
2:A:500:NHM:S1	3:A:700:MIM:H9B2	2.54	0.47
1:A:96:PHE:O	1:A:100:ASN:HB2	2.14	0.47
1:A:47:LYS:NZ	1:A:429:ALA:H	2.13	0.47
1:A:47:LYS:CG	1:A:48:ASP:N	2.74	0.47
1:A:201:HIS:NE2	4:A:807:GOL:C3	2.78	0.47
1:A:151:ALA:HB1	1:A:166:VAL:CG2	2.45	0.47
1:A:377:LEU:O	1:A:379:GLU:N	2.48	0.47
1:A:219:TYR:HA	1:A:399:LEU:HD23	1.97	0.47
1:A:311:ILE:HD12	1:A:329:PHE:O	2.15	0.47
1:A:317:GLU:HA	1:A:323:ILE:HA	1.97	0.46
1:A:296:HIS:HB2	4:A:804:GOL:O2	2.15	0.46
1:A:68:ILE:HG13	1:A:195:ASN:HB3	1.97	0.46
1:A:227:LYS:HD3	1:A:247:ILE:CD1	2.44	0.46
1:A:283:PHE:CE2	1:A:402:GLN:HA	2.50	0.46
1:A:290:THR:H	1:A:293:GLU:CG	2.29	0.46
1:A:205:THR:HG21	1:A:454:MET:HG3	1.97	0.46
1:A:53:VAL:HG21	1:A:428:ARG:HD3	1.97	0.46
1:A:85:ASP:N	1:A:91:GLN:NE2	2.58	0.46
1:A:146:VAL:HG22	1:A:177:LEU:HD23	1.97	0.46
1:A:397:ASN:N	1:A:397:ASN:HD22	2.14	0.46
1:A:361:PHE:CD2	1:A:362:LYS:N	2.81	0.46
1:A:107:ARG:HH11	1:A:107:ARG:HG2	1.81	0.46
1:A:220:THR:HA	1:A:414:GLY:O	2.15	0.46
1:A:152:ILE:C	1:A:152:ILE:HD12	2.36	0.46
1:A:298:PHE:CE2	1:A:352:TYR:HB2	2.51	0.46
1:A:88:ASN:ND2	1:A:89:LYS:N	2.56	0.46
1:A:181:ARG:NH2	2:A:500:NHM:O7A	2.49	0.46
1:A:334:PHE:HB2	1:A:345:LEU:HB3	1.97	0.46
1:A:267:GLU:H	1:A:267:GLU:CD	2.19	0.46
1:A:279:TYR:CD1	1:A:279:TYR:C	2.89	0.45
1:A:383:ASP:O	1:A:387:LEU:CD2	2.50	0.45
1:A:428:ARG:HH11	1:A:428:ARG:CG	2.29	0.45
1:A:38:HIS:HB3	2:A:500:NHM:O9A	2.16	0.45
1:A:216:THR:HG22	1:A:217:CYS:N	2.31	0.45
1:A:81:TRP:CZ2	1:A:189:GLU:HG2	2.52	0.45
1:A:231:GLU:HA	1:A:231:GLU:OE1	2.17	0.45
1:A:315:VAL:CG2	1:A:325:ASP:O	2.65	0.45
1:A:345:LEU:HA	1:A:345:LEU:HD12	1.78	0.45

*Continued on next page...*

*Continued from previous page...*

Atom-1	Atom-2	Interatomic distance (Å)	Clash overlap (Å)
1:A:85:ASP:HB3	1:A:91:GLN:NE2	2.31	0.44
1:A:361:PHE:HZ	1:A:368:LYS:CB	2.30	0.44
1:A:73:LEU:HD23	1:A:73:LEU:HA	1.80	0.44
1:A:361:PHE:HD2	1:A:362:LYS:CB	2.31	0.44
1:A:289:PHE:C	1:A:290:THR:O	2.51	0.44
1:A:174:HIS:HB3	1:A:177:LEU:HD23	1.98	0.44
1:A:266:LYS:CA	1:A:269:ILE:HD13	2.47	0.44
1:A:405:THR:HG21	1:A:443:ASP:C	2.38	0.44
1:A:381:ILE:O	1:A:384:ALA:HB3	2.17	0.44
1:A:262:ARG:HD2	1:A:265:LYS:HE3	1.99	0.44
1:A:377:LEU:C	1:A:379:GLU:H	2.20	0.44
1:A:181:ARG:NH1	5:A:1041:HOH:O	2.43	0.44
1:A:88:ASN:C	1:A:88:ASN:ND2	2.71	0.44
1:A:351:TYR:CZ	1:A:455:LEU:HD21	2.52	0.44
1:A:422:PHE:CD1	1:A:422:PHE:N	2.85	0.44
1:A:411:LEU:N	1:A:411:LEU:CD1	2.81	0.44
1:A:210:LEU:HB3	1:A:211:PRO:HD2	1.99	0.44
1:A:266:LYS:HA	1:A:269:ILE:CD1	2.47	0.43
1:A:81:TRP:CH2	1:A:189:GLU:HG2	2.53	0.43
1:A:242:THR:O	1:A:245:ASP:HB2	2.18	0.43
1:A:224:LEU:HD13	1:A:389:LYS:HA	2.00	0.43
1:A:85:ASP:HB2	4:A:812:GOL:H12	2.00	0.43
1:A:154:VAL:HG23	1:A:156:LEU:CD1	2.49	0.43
1:A:176:GLN:HE21	1:A:176:GLN:HB2	1.61	0.43
1:A:71:LYS:HA	1:A:72:PRO:HD2	1.88	0.43
1:A:59:ILE:HD11	1:A:428:ARG:N	2.32	0.43
1:A:359:PHE:C	1:A:361:PHE:H	2.22	0.43
1:A:296:HIS:HB2	4:A:804:GOL:C3	2.48	0.43
1:A:48:ASP:CG	1:A:49:PHE:H	2.22	0.43
1:A:292:GLU:C	1:A:294:PHE:H	2.20	0.43
1:A:152:ILE:CD1	1:A:167:GLU:HB3	2.48	0.43
1:A:151:ALA:HB1	1:A:166:VAL:HG21	2.00	0.43
1:A:235:THR:CG2	3:A:700:MIM:HG1	2.49	0.43
1:A:96:PHE:O	1:A:100:ASN:CB	2.67	0.43
1:A:381:ILE:CD1	1:A:381:ILE:N	2.82	0.43
1:A:56:GLU:CD	1:A:159:ARG:HG3	2.39	0.43
1:A:181:ARG:HB3	1:A:181:ARG:NH1	2.33	0.43
1:A:408:LEU:O	1:A:409:ASP:C	2.58	0.43
1:A:214:VAL:CG1	1:A:432:ILE:CG2	2.97	0.42
1:A:271:GLN:OE1	1:A:322:LYS:HA	2.17	0.42
1:A:205:THR:CG2	1:A:454:MET:HG3	2.50	0.42

*Continued on next page...*



*Continued from previous page...*

Atom-1	Atom-2	Interatomic distance (Å)	Clash overlap (Å)
1:A:238:PRO:HG3	1:A:246:MET:SD	2.59	0.42
1:A:381:ILE:H	1:A:381:ILE:CD1	2.31	0.42
1:A:446:ARG:HG2	5:A:1054:HOH:O	2.20	0.42
1:A:307:ASP:OD1	1:A:308:LYS:HG2	2.19	0.42
1:A:118:GLU:H	1:A:118:GLU:CD	2.21	0.42
1:A:276:PHE:CD2	1:A:294:PHE:HE1	2.36	0.42
1:A:85:ASP:N	1:A:91:GLN:HE22	2.15	0.42
1:A:279:TYR:HE1	1:A:283:PHE:CZ	2.38	0.42
1:A:312:PHE:O	1:A:328:SER:HA	2.19	0.42
1:A:218:ARG:HD2	1:A:419:PHE:CE1	2.54	0.42
1:A:428:ARG:NH1	1:A:428:ARG:CG	2.82	0.42
1:A:226:TRP:CE3	1:A:247:ILE:HG13	2.55	0.42
1:A:285:LEU:HB3	1:A:432:ILE:CD1	2.49	0.42
1:A:73:LEU:HB3	1:A:74:PRO:CD	2.49	0.42
1:A:146:VAL:HG22	1:A:174:HIS:CB	2.50	0.42
1:A:88:ASN:HB3	1:A:91:GLN:HE21	1.84	0.41
1:A:159:ARG:NH1	1:A:284:GLU:OE1	2.53	0.41
1:A:38:HIS:HB3	1:A:41:TRP:HB2	2.02	0.41
1:A:46:VAL:O	1:A:47:LYS:O	2.38	0.41
1:A:53:VAL:O	1:A:430:LYS:NZ	2.51	0.41
1:A:216:THR:O	1:A:434:GLY:HA3	2.21	0.41
1:A:262:ARG:CZ	1:A:265:LYS:HE3	2.51	0.41
1:A:150:SER:O	1:A:168:ILE:HG23	2.20	0.41
1:A:178:ARG:HD2	2:A:500:NHM:O10	2.20	0.41
1:A:181:ARG:HB3	1:A:181:ARG:HH11	1.86	0.41
1:A:262:ARG:NE	1:A:265:LYS:HE3	2.36	0.41
1:A:265:LYS:HD3	1:A:268:ASP:CG	2.41	0.41
1:A:214:VAL:HG21	1:A:424:LEU:CD1	2.51	0.41
1:A:221:HIS:O	1:A:223:PRO:HD3	2.21	0.41
1:A:285:LEU:CB	1:A:432:ILE:HD13	2.48	0.41
2:A:500:NHM:H5M2	2:A:500:NHM:C2A	2.51	0.41
1:A:376:ARG:HG2	1:A:376:ARG:HH11	1.86	0.41
1:A:38:HIS:O	1:A:42:ARG:HG2	2.21	0.40
1:A:76:LEU:HA	1:A:76:LEU:HD23	1.80	0.40
1:A:359:PHE:C	1:A:361:PHE:N	2.75	0.40
1:A:272:VAL:O	1:A:275:LEU:HB3	2.22	0.40
1:A:68:ILE:HG22	1:A:69:SER:N	2.37	0.40
1:A:168:ILE:HG22	1:A:169:ASN:N	2.36	0.40
1:A:88:ASN:HB3	1:A:91:GLN:HB2	2.03	0.40

All (4) symmetry-related close contacts are listed below. The label for Atom-2 includes the symmetry operator and encoded unit-cell translations to be applied.

Atom-1	Atom-2	Interatomic distance (Å)	Clash overlap (Å)
4:A:811:GOL:O1	4:A:811:GOL:O1[5_556]	1.32	0.88
4:A:811:GOL:O3	4:A:811:GOL:O3[5_556]	1.99	0.21
1:A:245:ASP:OD2	4:A:809:GOL:O2[6_666]	2.04	0.16
1:A:70:ASP:OD2	4:A:811:GOL:O1[5_556]	2.12	0.08

## 5.3 Torsion angles [i](#)

### 5.3.1 Protein backbone [i](#)

In the following table, the Percentiles column shows the percent Ramachandran outliers of the chain as a percentile score with respect to all X-ray entries followed by that with respect to entries of similar resolution.

The Analysed column shows the number of residues for which the backbone conformation was analysed, and the total number of residues.

Mol	Chain	Analysed	Favoured	Allowed	Outliers	Percentiles
1	A	420/422 (100%)	348 (83%)	57 (14%)	15 (4%)	<b>4</b> <b>18</b>

All (15) Ramachandran outliers are listed below:

Mol	Chain	Res	Type
1	A	47	LYS
1	A	211	PRO
1	A	264	LEU
1	A	269	ILE
1	A	322	LYS
1	A	357	ALA
1	A	408	LEU
1	A	435	GLY
1	A	447	ARG
1	A	51	GLU
1	A	392	ASN
1	A	367	PRO
1	A	374	LYS
1	A	35	MET
1	A	378	CYS

### 5.3.2 Protein sidechains ⓘ

In the following table, the Percentiles column shows the percent sidechain outliers of the chain as a percentile score with respect to all X-ray entries followed by that with respect to entries of similar resolution.

The Analysed column shows the number of residues for which the sidechain conformation was analysed, and the total number of residues.

Mol	Chain	Analysed	Rotameric	Outliers	Percentiles	
1	A	362/381 (95%)	327 (90%)	35 (10%)	10	30

All (35) residues with a non-rotameric sidechain are listed below:

Mol	Chain	Res	Type
1	A	78	SER
1	A	88	ASN
1	A	92	LEU
1	A	107	ARG
1	A	121	ASN
1	A	142	THR
1	A	146	VAL
1	A	153	PRO
1	A	156	LEU
1	A	162	GLN
1	A	165	SER
1	A	203	LEU
1	A	211	PRO
1	A	265	LYS
1	A	301	GLU
1	A	305	PRO
1	A	307	ASP
1	A	317	GLU
1	A	320	ASP
1	A	332	LEU
1	A	334	PHE
1	A	343	LYS
1	A	351	TYR
1	A	359	PHE
1	A	361	PHE
1	A	364	ARG
1	A	365	PHE
1	A	366	ASP
1	A	367	PRO
1	A	373	LEU

*Continued on next page...*

*Continued from previous page...*

Mol	Chain	Res	Type
1	A	376	ARG
1	A	387	LEU
1	A	393	MET
1	A	420	LEU
1	A	432	ILE

Some sidechains can be flipped to improve hydrogen bonding and reduce clashes. All (15) such sidechains are listed below:

Mol	Chain	Res	Type
1	A	88	ASN
1	A	91	GLN
1	A	114	ASN
1	A	121	ASN
1	A	162	GLN
1	A	174	HIS
1	A	176	GLN
1	A	195	ASN
1	A	225	ASN
1	A	318	GLN
1	A	390	ASN
1	A	397	ASN
1	A	404	ASN
1	A	421	ASN
1	A	426	ASN

### 5.3.3 RNA ⓘ

There are no RNA molecules in this entry.

## 5.4 Non-standard residues in protein, DNA, RNA chains ⓘ

There are no non-standard protein/DNA/RNA residues in this entry.

## 5.5 Carbohydrates ⓘ

There are no carbohydrates in this entry.

## 5.6 Ligand geometry

14 ligands are modelled in this entry.

In the following table, the Counts columns list the number of bonds (or angles) for which Mogul statistics could be retrieved, the number of bonds (or angles) that are observed in the model and the number of bonds (or angles) that are defined in the chemical component dictionary. The Link column lists molecule types, if any, to which the group is linked. The Z score for a bond length (or angle) is the number of standard deviations the observed value is removed from the expected value. A bond length (or angle) with  $|Z| > 2$  is considered an outlier worth inspection. RMSZ is the root-mean-square of all Z scores of the bond lengths (or angles).

Mol	Type	Chain	Res	Link	Bond lengths			Bond angles		
					Counts	RMSZ	# $ Z  > 2$	Counts	RMSZ	# $ Z  > 2$
2	NHM	A	500	-	56,66,66	1.55	10 (17%)	68,92,92	1.31	8 (11%)
3	MIM	A	700	-	44,45,45	1.57	10 (22%)	51,57,57	1.54	12 (23%)
4	GOL	A	801	-	5,5,5	0.79	0	5,5,5	0.54	0
4	GOL	A	802	-	5,5,5	1.30	1 (20%)	5,5,5	0.64	0
4	GOL	A	803	-	5,5,5	1.02	0	5,5,5	0.60	0
4	GOL	A	804	-	5,5,5	1.95	1 (20%)	5,5,5	0.60	0
4	GOL	A	805	-	5,5,5	0.80	0	5,5,5	0.53	0
4	GOL	A	806	-	5,5,5	0.83	0	5,5,5	0.62	0
4	GOL	A	807	-	5,5,5	0.84	0	5,5,5	0.59	0
4	GOL	A	808	-	5,5,5	1.06	0	5,5,5	0.56	0
4	GOL	A	809	1	5,5,5	0.89	0	5,5,5	0.87	0
4	GOL	A	810	-	5,5,5	1.08	0	5,5,5	0.65	0
4	GOL	A	811	-	5,5,5	0.99	1 (20%)	5,5,5	0.37	0
4	GOL	A	812	-	5,5,5	0.94	1 (20%)	5,5,5	0.53	0

In the following table, the Chirals column lists the number of chiral outliers, the number of chiral centers analysed, the number of these observed in the model and the number defined in the chemical component dictionary. Similar counts are reported in the Torsion and Rings columns. '-' means no outliers of that kind were identified.

Mol	Type	Chain	Res	Link	Chirals	Torsions	Rings
2	NHM	A	500	-	-	0/61/81/81	0/3/3/3
3	MIM	A	700	-	-	0/40/48/48	0/3/3/3
4	GOL	A	801	-	-	0/4/4/4	0/0/0/0
4	GOL	A	802	-	-	0/4/4/4	0/0/0/0
4	GOL	A	803	-	-	0/4/4/4	0/0/0/0
4	GOL	A	804	-	-	0/4/4/4	0/0/0/0
4	GOL	A	805	-	-	0/4/4/4	0/0/0/0
4	GOL	A	806	-	-	0/4/4/4	0/0/0/0
4	GOL	A	807	-	-	0/4/4/4	0/0/0/0

*Continued on next page...*

*Continued from previous page...*

Mol	Type	Chain	Res	Link	Chirals	Torsions	Rings
4	GOL	A	808	-	-	0/4/4/4	0/0/0/0
4	GOL	A	809	1	-	0/4/4/4	0/0/0/0
4	GOL	A	810	-	-	0/4/4/4	0/0/0/0
4	GOL	A	811	-	-	0/4/4/4	0/0/0/0
4	GOL	A	812	-	-	0/4/4/4	0/0/0/0

All (24) bond length outliers are listed below:

Mol	Chain	Res	Type	Atoms	Z	Observed(Å)	Ideal(Å)
4	A	804	GOL	O2-C2	-4.20	1.30	1.43
3	A	700	MIM	CB-NS	-3.14	1.27	1.34
4	A	802	GOL	O2-C2	-2.20	1.36	1.43
3	A	700	MIM	CAS-CS	-2.13	1.46	1.52
4	A	811	GOL	O2-C2	-2.10	1.37	1.43
4	A	812	GOL	O2-C2	-2.02	1.37	1.43
2	A	500	NHM	C6-C5	2.05	1.55	1.51
3	A	700	MIM	CIB-CBB	2.07	1.54	1.49
2	A	500	NHM	P2A-O4A	2.12	1.58	1.51
3	A	700	MIM	CAB-C0B	2.17	1.55	1.51
3	A	700	MIM	OK-CK	2.18	1.27	1.23
3	A	700	MIM	C1B-C0B	2.24	1.43	1.38
2	A	500	NHM	C6A-N6A	2.33	1.42	1.34
2	A	500	NHM	C5A-C4A	2.34	1.45	1.40
2	A	500	NHM	P3X-O9A	2.35	1.58	1.51
2	A	500	NHM	P3X-O8A	2.41	1.63	1.54
3	A	700	MIM	C4B-C5B	2.44	1.43	1.38
3	A	700	MIM	C4B-C3B	2.76	1.44	1.38
3	A	700	MIM	CBS-CAS	2.77	1.59	1.52
2	A	500	NHM	P3X-O7A	2.89	1.65	1.54
3	A	700	MIM	C5B-C0B	2.91	1.45	1.38
2	A	500	NHM	P1A-O2A	3.03	1.62	1.51
2	A	500	NHM	O4X-C1X	3.56	1.45	1.41
2	A	500	NHM	C4A-N3A	6.69	1.45	1.35

All (20) bond angle outliers are listed below:

Mol	Chain	Res	Type	Atoms	Z	Observed(°)	Ideal(°)
2	A	500	NHM	P2A-O3A-P1A	-4.37	120.46	132.73
3	A	700	MIM	CBY-CAY-NY	-3.60	98.83	111.63
2	A	500	NHM	C2-C3-N4	-3.14	106.08	112.36
3	A	700	MIM	CAK-CK-NY	-2.75	111.32	116.72
3	A	700	MIM	C6B-C3B-C2B	-2.58	114.71	121.25

*Continued on next page...*

*Continued from previous page...*

Mol	Chain	Res	Type	Atoms	Z	Observed(°)	Ideal(°)
3	A	700	MIM	C8B-C7B-C6B	-2.53	103.21	113.90
3	A	700	MIM	CEY-CDY-CGY	-2.46	108.25	112.22
2	A	500	NHM	O10-C10-C9	-2.30	105.09	110.38
3	A	700	MIM	CHY-CKY-CGY	-2.28	108.54	112.22
3	A	700	MIM	C0B-CAB-CB	-2.26	105.47	112.84
3	A	700	MIM	CEB-NAB-CBB	-2.21	106.53	108.60
3	A	700	MIM	CAB-C0B-C1B	-2.15	117.63	120.86
2	A	500	NHM	O3A-P2A-O6A	2.02	108.30	102.94
3	A	700	MIM	C8B-C9B-NAB	2.10	116.66	112.31
2	A	500	NHM	C7-C6-C5	2.15	115.86	112.31
3	A	700	MIM	OGS-CBS-CAS	2.31	116.10	111.13
2	A	500	NHM	CP-C1M-C2M	2.77	121.55	115.59
2	A	500	NHM	C4A-C5A-N7A	2.92	112.17	109.48
3	A	700	MIM	CAB-CB-NS	3.10	120.94	115.96
2	A	500	NHM	O4X-C1X-N9A	4.90	118.35	108.10

There are no chirality outliers.

There are no torsion outliers.

There are no ring outliers.

10 monomers are involved in 31 short contacts:

Mol	Chain	Res	Type	Clashes	Symm-Clashes
2	A	500	NHM	8	0
3	A	700	MIM	6	0
4	A	803	GOL	1	0
4	A	804	GOL	5	0
4	A	805	GOL	2	0
4	A	807	GOL	4	0
4	A	809	GOL	0	1
4	A	810	GOL	1	0
4	A	811	GOL	0	3
4	A	812	GOL	1	0

## 5.7 Other polymers [i](#)

There are no such residues in this entry.

## 5.8 Polymer linkage issues [i](#)

There are no chain breaks in this entry.

## 6 Fit of model and data [i](#)

### 6.1 Protein, DNA and RNA chains [i](#)

EDS was not executed - this section will therefore be empty.

### 6.2 Non-standard residues in protein, DNA, RNA chains [i](#)

EDS was not executed - this section will therefore be empty.

### 6.3 Carbohydrates [i](#)

EDS was not executed - this section will therefore be empty.

### 6.4 Ligands [i](#)

EDS was not executed - this section will therefore be empty.

### 6.5 Other polymers [i](#)

EDS was not executed - this section will therefore be empty.