



# Full wwPDB X-ray Structure Validation Report ⓘ

Feb 1, 2016 – 11:03 AM GMT

PDB ID : 3NYQ  
Title : Malonyl-CoA Ligase Ternary Product Complex with Methylmalonyl-CoA and AMP bound  
Authors : Hughes, A.J.; Keatinge-Clay, A.T.  
Deposited on : 2010-07-15  
Resolution : 1.43 Å(reported)

This is a Full wwPDB X-ray Structure Validation Report for a publicly released PDB entry.  
We welcome your comments at [validation@mail.wwpdb.org](mailto:validation@mail.wwpdb.org)  
A user guide is available at  
<http://wwpdb.org/validation/2016/XrayValidationReportHelp>  
with specific help available everywhere you see the ⓘ symbol.

---

The following versions of software and data (see [references ⓘ](#)) were used in the production of this report:

MolProbity : 4.02b-467  
Mogul : 1.7 (RC4), CSD as536be (2015)  
Xtriage (Phenix) : 1.9-1692  
EDS : rb-20026688  
Percentile statistics : 20151230.v01 (using entries in the PDB archive December 30th 2015)  
Refmac : 5.8.0135  
CCP4 : 6.5.0  
Ideal geometry (proteins) : Engh & Huber (2001)  
Ideal geometry (DNA, RNA) : Parkinson et al. (1996)  
Validation Pipeline (wwPDB-VP) : trunk26865

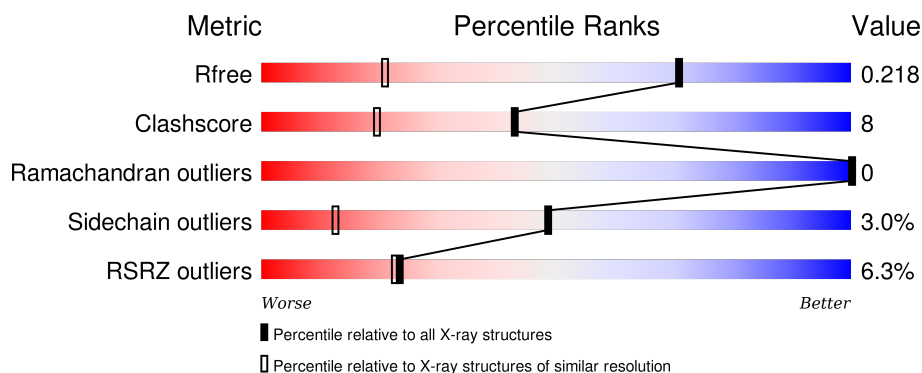
# 1 Overall quality at a glance

The following experimental techniques were used to determine the structure:

## *X-RAY DIFFRACTION*

The reported resolution of this entry is 1.43 Å.

Percentile scores (ranging between 0-100) for global validation metrics of the entry are shown in the following graphic. The table shows the number of entries on which the scores are based.



Metric	Whole archive (#Entries)	Similar resolution (#Entries, resolution range(Å))
$R_{free}$	91344	1164 (1.46-1.42)
Clashscore	102246	1219 (1.46-1.42)
Ramachandran outliers	100387	1200 (1.46-1.42)
Sidechain outliers	100360	1200 (1.46-1.42)
RSRZ outliers	91569	1166 (1.46-1.42)

The table below summarises the geometric issues observed across the polymeric chains and their fit to the electron density. The red, orange, yellow and green segments on the lower bar indicate the fraction of residues that contain outliers for  $\geq 3$ , 2, 1 and 0 types of geometric quality criteria. A grey segment represents the fraction of residues that are not modelled. The numeric value for each fraction is indicated below the corresponding segment, with a dot representing fractions  $\leq 5\%$ . The upper red bar (where present) indicates the fraction of residues that have poor fit to the electron density. The numeric value is given above the bar.

Mol	Chain	Length	Quality of chain
1	A	505	

## 2 Entry composition

There are 6 unique types of molecules in this entry. The entry contains 3837 atoms, of which 0 are hydrogens and 0 are deuteriums.

In the tables below, the ZeroOcc column contains the number of atoms modelled with zero occupancy, the AltConf column contains the number of residues with at least one atom in alternate conformation and the Trace column contains the number of residues modelled with at most 2 atoms.

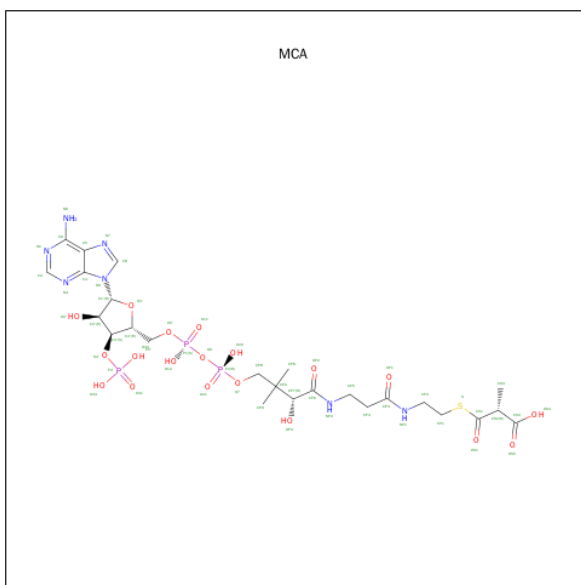
- Molecule 1 is a protein called Malonyl-CoA Ligase.

Mol	Chain	Residues	Atoms					ZeroOcc	AltConf	Trace
1	A	460	Total	C	N	O	S	0	0	0
			3378	2128	612	632	6			

There are 20 discrepancies between the modelled and reference sequences:

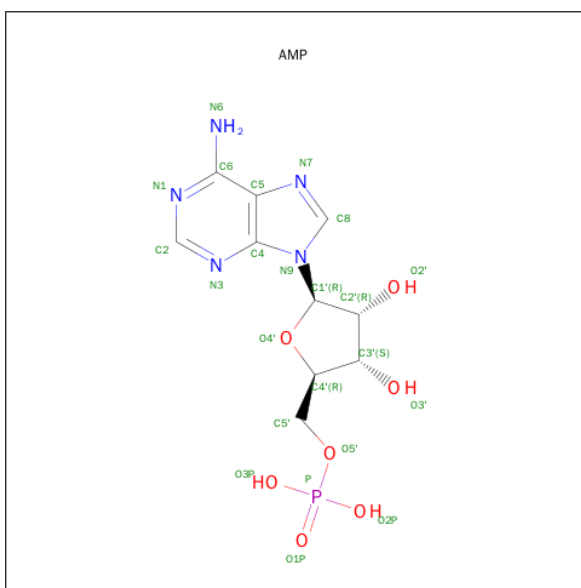
Chain	Residue	Modelled	Actual	Comment	Reference
A	-19	MET	-	EXPRESSION TAG	UNP Q9L0A2
A	-18	GLY	-	EXPRESSION TAG	UNP Q9L0A2
A	-17	SER	-	EXPRESSION TAG	UNP Q9L0A2
A	-16	SER	-	EXPRESSION TAG	UNP Q9L0A2
A	-15	HIS	-	EXPRESSION TAG	UNP Q9L0A2
A	-14	HIS	-	EXPRESSION TAG	UNP Q9L0A2
A	-13	HIS	-	EXPRESSION TAG	UNP Q9L0A2
A	-12	HIS	-	EXPRESSION TAG	UNP Q9L0A2
A	-11	HIS	-	EXPRESSION TAG	UNP Q9L0A2
A	-10	HIS	-	EXPRESSION TAG	UNP Q9L0A2
A	-9	SER	-	EXPRESSION TAG	UNP Q9L0A2
A	-8	SER	-	EXPRESSION TAG	UNP Q9L0A2
A	-7	GLY	-	EXPRESSION TAG	UNP Q9L0A2
A	-6	LEU	-	EXPRESSION TAG	UNP Q9L0A2
A	-5	VAL	-	EXPRESSION TAG	UNP Q9L0A2
A	-4	PRO	-	EXPRESSION TAG	UNP Q9L0A2
A	-3	ARG	-	EXPRESSION TAG	UNP Q9L0A2
A	-2	GLY	-	EXPRESSION TAG	UNP Q9L0A2
A	-1	SER	-	EXPRESSION TAG	UNP Q9L0A2
A	0	HIS	-	EXPRESSION TAG	UNP Q9L0A2

- Molecule 2 is METHYLMALONYL-COENZYME A (three-letter code: MCA) (formula:  $C_{25}H_{40}N_7O_{19}P_3S$ ).



Mol	Chain	Residues	Atoms						ZeroOcc	AltConf
2	A	1	Total	C	N	O	P	S	0	0
			29	15	2	10	1	1		

- Molecule 3 is ADENOSINE MONOPHOSPHATE (three-letter code: AMP) (formula:  $C_{10}H_{14}N_5O_7P$ ).



Mol	Chain	Residues	Atoms					ZeroOcc	AltConf
3	A	1	Total	C	N	O	P	0	0
			23	10	5	7	1		

- Molecule 4 is CHLORIDE ION (three-letter code: CL) (formula:  $Cl$ ).

Mol	Chain	Residues	Atoms		ZeroOcc	AltConf
4	A	2	Total	Cl	0	0
			2	2		

- Molecule 5 is MAGNESIUM ION (three-letter code: MG) (formula: Mg).

Mol	Chain	Residues	Atoms		ZeroOcc	AltConf
5	A	1	Total	Mg	0	0
			1	1		

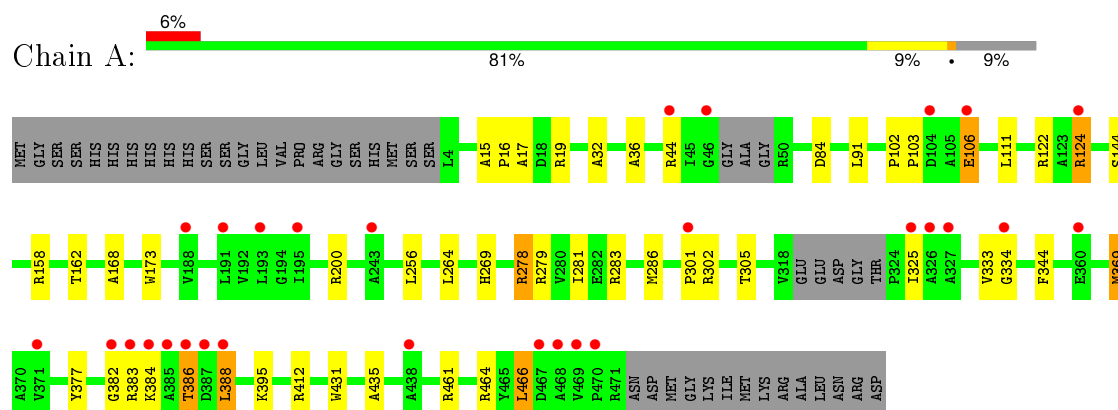
- Molecule 6 is water.

Mol	Chain	Residues	Atoms		ZeroOcc	AltConf
6	A	404	Total	O	0	0
			404	404		

### 3 Residue-property plots [i](#)

These plots are drawn for all protein, RNA and DNA chains in the entry. The first graphic for a chain summarises the proportions of errors displayed in the second graphic. The second graphic shows the sequence view annotated by issues in geometry and electron density. Residues are color-coded according to the number of geometric quality criteria for which they contain at least one outlier: green = 0, yellow = 1, orange = 2 and red = 3 or more. A red dot above a residue indicates a poor fit to the electron density ( $\text{RSRZ} > 2$ ). Stretches of 2 or more consecutive residues without any outlier are shown as a green connector. Residues present in the sample, but not in the model, are shown in grey.

- Molecule 1: Malonyl-CoA Ligase



## 4 Data and refinement statistics

Property	Value	Source
Space group	C 2 2 21	Depositor
Cell constants a, b, c, $\alpha$ , $\beta$ , $\gamma$	73.38 Å 86.79 Å 153.39 Å 90.00° 90.00° 90.00°	Depositor
Resolution (Å)	76.70 – 1.43 35.68 – 1.43	Depositor EDS
% Data completeness (in resolution range)	98.5 (76.70-1.43) 98.4 (35.68-1.43)	Depositor EDS
$R_{merge}$	(Not available)	Depositor
$R_{sym}$	0.06	Depositor
$\langle I/\sigma(I) \rangle$ <sup>1</sup>	2.44 (at 1.43 Å)	Xtriage
Refinement program	REFMAC 5.5.0072	Depositor
R, $R_{free}$	0.195 , 0.216 0.198 , 0.218	Depositor DCC
$R_{free}$ test set	4436 reflections (5.30%)	DCC
Wilson B-factor (Å <sup>2</sup> )	16.2	Xtriage
Anisotropy	0.061	Xtriage
Bulk solvent $k_{sol}$ (e/Å <sup>3</sup> ), $B_{sol}$ (Å <sup>2</sup> )	0.37 , 40.9	EDS
Estimated twinning fraction	No twinning to report.	Xtriage
L-test for twinning <sup>2</sup>	$\langle  L  \rangle = 0.50$ , $\langle L^2 \rangle = 0.34$	Xtriage
Outliers	0 of 88128 reflections	Xtriage
$F_o, F_c$ correlation	0.96	EDS
Total number of atoms	3837	wwPDB-VP
Average B, all atoms (Å <sup>2</sup> )	18.0	wwPDB-VP

Xtriage's analysis on translational NCS is as follows: *The largest off-origin peak in the Patterson function is 4.36% of the height of the origin peak. No significant pseudotranslation is detected.*

<sup>1</sup>Intensities estimated from amplitudes.

<sup>2</sup>Theoretical values of  $\langle |L| \rangle$ ,  $\langle L^2 \rangle$  for acentric reflections are 0.5, 0.375 respectively for untwinned datasets, and 0.333, 0.2 for perfectly twinned datasets.

## 5 Model quality [i](#)

### 5.1 Standard geometry [i](#)

Bond lengths and bond angles in the following residue types are not validated in this section: AMP, MG, MCA, CL

The Z score for a bond length (or angle) is the number of standard deviations the observed value is removed from the expected value. A bond length (or angle) with  $|Z| > 5$  is considered an outlier worth inspection. RMSZ is the root-mean-square of all Z scores of the bond lengths (or angles).

Mol	Chain	Bond lengths		Bond angles	
		RMSZ	$\# Z  > 5$	RMSZ	$\# Z  > 5$
1	A	0.63	0/3451	0.82	3/4717 (0.1%)

There are no bond length outliers.

All (3) bond angle outliers are listed below:

Mol	Chain	Res	Type	Atoms	Z	Observed(°)	Ideal(°)
1	A	84	ASP	CB-CG-OD1	5.36	123.12	118.30
1	A	461	ARG	NE-CZ-NH2	-5.13	117.74	120.30
1	A	122	ARG	NE-CZ-NH2	-5.06	117.77	120.30

There are no chirality outliers.

There are no planarity outliers.

### 5.2 Too-close contacts [i](#)

In the following table, the Non-H and H(model) columns list the number of non-hydrogen atoms and hydrogen atoms in the chain respectively. The H(added) column lists the number of hydrogen atoms added and optimized by MolProbity. The Clashes column lists the number of clashes within the asymmetric unit, whereas Symm-Clashes lists symmetry related clashes.

Mol	Chain	Non-H	H(model)	H(added)	Clashes	Symm-Clashes
1	A	3378	0	3402	55	1
2	A	29	0	24	0	0
3	A	23	0	12	2	0
4	A	2	0	0	1	0
5	A	1	0	0	0	0
6	A	404	0	0	7	1
All	All	3837	0	3438	56	1



The all-atom clashscore is defined as the number of clashes found per 1000 atoms (including hydrogen atoms). The all-atom clashscore for this structure is 8.

All (56) close contacts within the same asymmetric unit are listed below, sorted by their clash magnitude.

Atom-1	Atom-2	Interatomic distance (Å)	Clash overlap (Å)
1:A:158:ARG:HD2	6:A:890:HOH:O	1.31	1.30
1:A:91:LEU:HD11	1:A:111:LEU:HD23	1.21	1.12
1:A:91:LEU:HD11	1:A:111:LEU:CD2	1.92	1.00
1:A:302:ARG:O	1:A:305:THR:HG22	1.70	0.91
1:A:158:ARG:CD	6:A:890:HOH:O	1.98	0.83
1:A:144:SER:O	1:A:395:LYS:HE3	1.80	0.81
1:A:91:LEU:CD1	1:A:111:LEU:HD23	2.11	0.77
1:A:431:TRP:HB3	1:A:466:LEU:HD11	1.68	0.75
1:A:369:MET:HE1	1:A:384:LYS:HB2	1.70	0.74
1:A:333:VAL:CG1	1:A:369:MET:HG2	2.20	0.72
1:A:369:MET:HE3	1:A:384:LYS:N	2.06	0.71
1:A:395:LYS:HD3	3:A:487:AMP:O3P	1.91	0.70
1:A:158:ARG:CG	6:A:890:HOH:O	2.35	0.68
1:A:144:SER:O	1:A:395:LYS:CE	2.45	0.64
1:A:106:GLU:H	1:A:106:GLU:CD	2.02	0.64
1:A:431:TRP:CZ3	1:A:464:ARG:HD2	2.34	0.63
1:A:383:ARG:NH1	1:A:388:LEU:HD21	2.14	0.62
1:A:17:ALA:HB1	1:A:32:ALA:HB2	1.82	0.62
1:A:256:LEU:HD11	1:A:281:ILE:CD1	2.31	0.61
1:A:36:ALA:HB1	1:A:124:ARG:HG2	1.83	0.60
1:A:44:ARG:HG3	1:A:44:ARG:HH11	1.66	0.60
1:A:388:LEU:HB3	6:A:554:HOH:O	2.03	0.59
1:A:369:MET:HE3	1:A:383:ARG:C	2.23	0.58
1:A:279:ARG:HD2	1:A:301:PRO:HB2	1.83	0.58
4:A:498:CL:CL	6:A:622:HOH:O	2.54	0.58
1:A:333:VAL:HG12	1:A:369:MET:CG	2.35	0.57
1:A:305:THR:HG21	1:A:377:TYR:HD1	1.70	0.56
1:A:278:ARG:HB2	6:A:614:HOH:O	2.04	0.56
1:A:333:VAL:CG1	1:A:369:MET:CG	2.84	0.56
1:A:333:VAL:HG12	1:A:369:MET:HG2	1.88	0.55
1:A:44:ARG:HG3	1:A:44:ARG:NH1	2.22	0.54
1:A:431:TRP:CH2	1:A:464:ARG:HD2	2.43	0.53
1:A:264:LEU:HD23	1:A:269:HIS:CE1	2.43	0.53
1:A:256:LEU:HD11	1:A:281:ILE:HD11	1.91	0.53
1:A:369:MET:HE1	1:A:384:LYS:CB	2.37	0.52
1:A:158:ARG:O	1:A:162:THR:HG23	2.10	0.51
1:A:369:MET:CE	1:A:384:LYS:N	2.72	0.51

*Continued on next page...*

Continued from previous page...

Atom-1	Atom-2	Interatomic distance (Å)	Clash overlap (Å)
1:A:386:THR:O	1:A:386:THR:HG22	2.12	0.50
1:A:369:MET:HE1	1:A:384:LYS:CA	2.42	0.50
1:A:256:LEU:HD11	1:A:281:ILE:HD12	1.94	0.48
1:A:369:MET:CE	1:A:384:LYS:CA	2.92	0.47
1:A:19:ARG:NH2	6:A:892:HOH:O	2.48	0.47
1:A:168:ALA:HA	1:A:173:TRP:HB3	1.96	0.46
1:A:44:ARG:HG3	1:A:44:ARG:O	2.15	0.46
1:A:369:MET:HE3	1:A:369:MET:HB2	1.74	0.45
1:A:102:PRO:HA	1:A:103:PRO:HD3	1.89	0.43
1:A:466:LEU:HD12	1:A:466:LEU:N	2.33	0.43
1:A:412:ARG:HG3	1:A:435:ALA:HA	2.01	0.42
1:A:325:ILE:HD12	1:A:334:GLY:HA3	2.01	0.42
1:A:369:MET:CE	1:A:384:LYS:HA	2.50	0.42
1:A:386:THR:O	1:A:386:THR:CG2	2.68	0.42
1:A:382:GLY:C	1:A:383:ARG:HG2	2.40	0.41
1:A:286:MET:HA	3:A:487:AMP:H5'2	2.03	0.41
1:A:278:ARG:HD3	1:A:278:ARG:C	2.41	0.41
1:A:15:ALA:HB3	1:A:16:PRO:HD3	2.03	0.41
1:A:124:ARG:NH2	1:A:124:ARG:HG3	2.36	0.40

All (1) symmetry-related close contacts are listed below. The label for Atom-2 includes the symmetry operator and encoded unit-cell translations to be applied.

Atom-1	Atom-2	Interatomic distance (Å)	Clash overlap (Å)
1:A:124:ARG:NH1	6:A:567:HOH:O[3_555]	2.15	0.05

## 5.3 Torsion angles [i](#)

### 5.3.1 Protein backbone [i](#)

In the following table, the Percentiles column shows the percent Ramachandran outliers of the chain as a percentile score with respect to all X-ray entries followed by that with respect to entries of similar resolution.

The Analysed column shows the number of residues for which the backbone conformation was analysed, and the total number of residues.

Mol	Chain	Analysed	Favoured	Allowed	Outliers	Percentiles	
1	A	454/505 (90%)	446 (98%)	8 (2%)	0	100	100

There are no Ramachandran outliers to report.

### 5.3.2 Protein sidechains ⓘ

In the following table, the Percentiles column shows the percent sidechain outliers of the chain as a percentile score with respect to all X-ray entries followed by that with respect to entries of similar resolution.

The Analysed column shows the number of residues for which the sidechain conformation was analysed, and the total number of residues.

Mol	Chain	Analysed	Rotameric	Outliers	Percentiles
1	A	337/373 (90%)	327 (97%)	10 (3%)	48 12

All (10) residues with a non-rotameric sidechain are listed below:

Mol	Chain	Res	Type
1	A	106	GLU
1	A	124	ARG
1	A	200	ARG
1	A	278	ARG
1	A	283	ARG
1	A	344	PHE
1	A	369	MET
1	A	386	THR
1	A	388	LEU
1	A	466	LEU

Some sidechains can be flipped to improve hydrogen bonding and reduce clashes. All (1) such sidechains are listed below:

Mol	Chain	Res	Type
1	A	221	ASN

### 5.3.3 RNA ⓘ

There are no RNA molecules in this entry.

## 5.4 Non-standard residues in protein, DNA, RNA chains ⓘ

There are no non-standard protein/DNA/RNA residues in this entry.

## 5.5 Carbohydrates [i](#)

There are no carbohydrates in this entry.

## 5.6 Ligand geometry [i](#)

Of 5 ligands modelled in this entry, 3 are monoatomic - leaving 2 for Mogul analysis.

In the following table, the Counts columns list the number of bonds (or angles) for which Mogul statistics could be retrieved, the number of bonds (or angles) that are observed in the model and the number of bonds (or angles) that are defined in the chemical component dictionary. The Link column lists molecule types, if any, to which the group is linked. The Z score for a bond length (or angle) is the number of standard deviations the observed value is removed from the expected value. A bond length (or angle) with  $|Z| > 2$  is considered an outlier worth inspection. RMSZ is the root-mean-square of all Z scores of the bond lengths (or angles).

Mol	Type	Chain	Res	Link	Bond lengths			Bond angles		
					Counts	RMSZ	# $ Z  > 2$	Counts	RMSZ	# $ Z  > 2$
2	MCA	A	486	-	20,28,57	0.70	0	26,39,85	0.95	2 (7%)
3	AMP	A	487	-	20,25,25	1.21	3 (15%)	22,38,38	1.90	7 (31%)

In the following table, the Chirals column lists the number of chiral outliers, the number of chiral centers analysed, the number of these observed in the model and the number defined in the chemical component dictionary. Similar counts are reported in the Torsion and Rings columns. '-' means no outliers of that kind were identified.

Mol	Type	Chain	Res	Link	Chirals	Torsions	Rings
2	MCA	A	486	-	-	0/34/38/75	0/0/0/3
3	AMP	A	487	-	-	0/6/26/26	0/3/3/3

All (3) bond length outliers are listed below:

Mol	Chain	Res	Type	Atoms	Z	Observed(Å)	Ideal(Å)
3	A	487	AMP	P-O2P	-2.48	1.45	1.54
3	A	487	AMP	O4'-C1'	2.41	1.44	1.41
3	A	487	AMP	C5-C4	2.93	1.47	1.40

All (9) bond angle outliers are listed below:

Mol	Chain	Res	Type	Atoms	Z	Observed(°)	Ideal(°)
3	A	487	AMP	N3-C2-N1	-6.01	124.29	128.89
3	A	487	AMP	O5'-P-O1P	-2.80	100.01	107.14
3	A	487	AMP	C1'-N9-C4	-2.75	122.79	126.94
3	A	487	AMP	C4-C5-N7	-2.74	106.96	109.48

*Continued on next page...*

*Continued from previous page...*

Mol	Chain	Res	Type	Atoms	Z	Observed(°)	Ideal(°)
2	A	486	MCA	CP1-S-CS1	2.11	109.49	102.02
3	A	487	AMP	N6-C6-N1	2.23	124.00	119.20
3	A	487	AMP	O2P-P-O5'	2.34	113.30	106.56
3	A	487	AMP	C2-N1-C6	2.34	122.95	118.77
2	A	486	MCA	O22-P2-O21	2.91	119.96	110.58

There are no chirality outliers.

There are no torsion outliers.

There are no ring outliers.

1 monomer is involved in 2 short contacts:

Mol	Chain	Res	Type	Clashes	Symm-Clashes
3	A	487	AMP	2	0

## 5.7 Other polymers [i](#)

There are no such residues in this entry.

## 5.8 Polymer linkage issues [i](#)

There are no chain breaks in this entry.

## 6 Fit of model and data ⓘ

### 6.1 Protein, DNA and RNA chains ⓘ

In the following table, the column labelled ‘#RSRZ> 2’ contains the number (and percentage) of RSRZ outliers, followed by percent RSRZ outliers for the chain as percentile scores relative to all X-ray entries and entries of similar resolution. The OWAB column contains the minimum, median, 95<sup>th</sup> percentile and maximum values of the occupancy-weighted average B-factor per residue. The column labelled ‘Q< 0.9’ lists the number of (and percentage) of residues with an average occupancy less than 0.9.

Mol	Chain	Analysed	<RSRZ>	#RSRZ>2	OWAB(Å <sup>2</sup> )	Q<0.9
1	A	460/505 (91%)	0.26	29 (6%) 23 22	8, 16, 28, 42	0

All (29) RSRZ outliers are listed below:

Mol	Chain	Res	Type	RSRZ
1	A	388	LEU	8.6
1	A	301	PRO	6.5
1	A	469	VAL	5.8
1	A	325	ILE	3.9
1	A	470	PRO	3.9
1	A	468	ALA	3.7
1	A	327	ALA	3.7
1	A	243	ALA	3.2
1	A	104	ASP	3.1
1	A	326	ALA	3.0
1	A	371	VAL	3.0
1	A	44	ARG	2.8
1	A	385	ALA	2.7
1	A	334	GLY	2.6
1	A	124	ARG	2.6
1	A	384	LYS	2.6
1	A	467	ASP	2.5
1	A	387	ASP	2.5
1	A	386	THR	2.5
1	A	438	ALA	2.5
1	A	46	GLY	2.4
1	A	191	LEU	2.4
1	A	382	GLY	2.3
1	A	360	GLU	2.3
1	A	188	VAL	2.3
1	A	195	ILE	2.1
1	A	383	ARG	2.1

*Continued on next page...*

*Continued from previous page...*

Mol	Chain	Res	Type	RSRZ
1	A	193	LEU	2.1
1	A	106	GLU	2.0

## 6.2 Non-standard residues in protein, DNA, RNA chains [i](#)

There are no non-standard protein/DNA/RNA residues in this entry.

## 6.3 Carbohydrates [i](#)

There are no carbohydrates in this entry.

## 6.4 Ligands [i](#)

In the following table, the Atoms column lists the number of modelled atoms in the group and the number defined in the chemical component dictionary. LLDF column lists the quality of electron density of the group with respect to its neighbouring residues in protein, DNA or RNA chains. The B-factors column lists the minimum, median, 95<sup>th</sup> percentile and maximum values of B factors of atoms in the group. The column labelled 'Q< 0.9' lists the number of atoms with occupancy less than 0.9.

Mol	Type	Chain	Res	Atoms	RSCC	RSR	LLDF	B-factors( $\text{\AA}^2$ )	Q<0.9
2	MCA	A	486	29/55	0.88	0.13	1.43	9,12,22,27	0
3	AMP	A	487	23/23	0.83	0.17	0.92	19,23,26,35	0
4	CL	A	498	1/1	0.99	0.09	0.80	20,20,20,20	0
4	CL	A	497	1/1	1.00	0.04	-4.33	12,12,12,12	0
5	MG	A	499	1/1	0.99	0.20	-	12,12,12,12	0

## 6.5 Other polymers [i](#)

There are no such residues in this entry.