



# Full wwPDB X-ray Structure Validation Report ⓘ

Feb 1, 2016 – 07:13 PM GMT

PDB ID : 4O6N  
Title : Structure of AF2299, a CDP-alcohol phosphotransferase (CDP-bound)  
Authors : Clarke, O.B.; Sciara, G.; Tomasek, D.; Banerjee, S.; Rajashankar, K.R.; Shapiro, L.; Mancia, F.; New York Consortium on Membrane Protein Structure (NYCOMPS)  
Deposited on : 2013-12-22  
Resolution : 2.10 Å(reported)

This is a Full wwPDB X-ray Structure Validation Report for a publicly released PDB entry.  
We welcome your comments at [validation@mail.wwpdb.org](mailto:validation@mail.wwpdb.org)  
A user guide is available at  
<http://wwpdb.org/validation/2016/XrayValidationReportHelp>  
with specific help available everywhere you see the ⓘ symbol.

---

The following versions of software and data (see [references ⓘ](#)) were used in the production of this report:

MolProbity : 4.02b-467  
Mogul : 1.7 (RC4), CSD as536be (2015)  
Xtriage (Phenix) : 1.9-1692  
EDS : rb-20026688  
Percentile statistics : 20151230.v01 (using entries in the PDB archive December 30th 2015)  
Refmac : 5.8.0135  
CCP4 : 6.5.0  
Ideal geometry (proteins) : Engh & Huber (2001)  
Ideal geometry (DNA, RNA) : Parkinson et al. (1996)  
Validation Pipeline (wwPDB-VP) : trunk26865

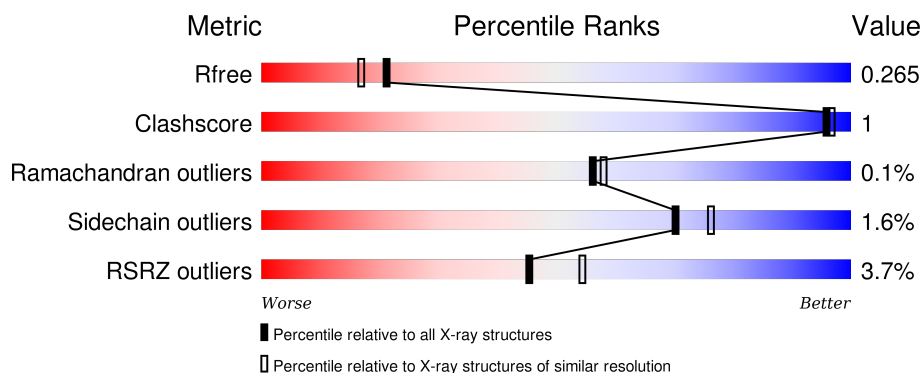
# 1 Overall quality at a glance

The following experimental techniques were used to determine the structure:

## *X-RAY DIFFRACTION*

The reported resolution of this entry is 2.10 Å.

Percentile scores (ranging between 0-100) for global validation metrics of the entry are shown in the following graphic. The table shows the number of entries on which the scores are based.



Metric	Whole archive (#Entries)	Similar resolution (#Entries, resolution range(Å))
$R_{free}$	91344	3939 (2.10-2.10)
Clashscore	102246	4460 (2.10-2.10)
Ramachandran outliers	100387	4413 (2.10-2.10)
Sidechain outliers	100360	4414 (2.10-2.10)
RSRZ outliers	91569	3948 (2.10-2.10)

The table below summarises the geometric issues observed across the polymeric chains and their fit to the electron density. The red, orange, yellow and green segments on the lower bar indicate the fraction of residues that contain outliers for  $\geq 3$ , 2, 1 and 0 types of geometric quality criteria. A grey segment represents the fraction of residues that are not modelled. The numeric value for each fraction is indicated below the corresponding segment, with a dot representing fractions  $\leq 5\%$ . The upper red bar (where present) indicates the fraction of residues that have poor fit to the electron density. The numeric value is given above the bar.

Mol	Chain	Length	Quality of chain
1	A	372	<div> <div>3%</div> <div>86%</div> <div>10%</div> </div>
1	B	372	<div> <div>4%</div> <div>90%</div> <div>8%</div> </div>

The following table lists non-polymeric compounds, carbohydrate monomers and non-standard residues in protein, DNA, RNA chains that are outliers for geometric or electron-density-fit criteria:

Mol	Type	Chain	Res	Chirality	Geometry	Clashes	Electron density
2	CA	A	402	-	-	-	X
4	MPG	A	404	-	-	-	X
4	MPG	B	405	-	-	-	X
4	MPG	B	407	-	-	-	X
5	TLA	A	409	-	-	-	X

## 2 Entry composition

There are 6 unique types of molecules in this entry. The entry contains 10988 atoms, of which 5404 are hydrogens and 0 are deuteriums.

In the tables below, the ZeroOcc column contains the number of atoms modelled with zero occupancy, the AltConf column contains the number of residues with at least one atom in alternate conformation and the Trace column contains the number of residues modelled with at most 2 atoms.

- Molecule 1 is a protein called AF2299, a CDP-alcohol phosphotransferase.

Mol	Chain	Residues	Atoms						ZeroOcc	AltConf	Trace
1	A	333	Total	C	H	N	O	S	0	0	0
			5216	1705	2621	420	464	6			
1	B	341	Total	C	H	N	O	S	0	0	0
			5426	1767	2739	435	479	6			

There are 56 discrepancies between the modelled and reference sequences:

Chain	Residue	Modelled	Actual	Comment	Reference
A	-27	MET	-	EXPRESSION TAG	UNP O27985
A	-26	HIS	-	EXPRESSION TAG	UNP O27985
A	-25	HIS	-	EXPRESSION TAG	UNP O27985
A	-24	HIS	-	EXPRESSION TAG	UNP O27985
A	-23	HIS	-	EXPRESSION TAG	UNP O27985
A	-22	HIS	-	EXPRESSION TAG	UNP O27985
A	-21	HIS	-	EXPRESSION TAG	UNP O27985
A	-20	HIS	-	EXPRESSION TAG	UNP O27985
A	-19	HIS	-	EXPRESSION TAG	UNP O27985
A	-18	HIS	-	EXPRESSION TAG	UNP O27985
A	-17	HIS	-	EXPRESSION TAG	UNP O27985
A	-16	SER	-	EXPRESSION TAG	UNP O27985
A	-15	SER	-	EXPRESSION TAG	UNP O27985
A	-14	GLY	-	EXPRESSION TAG	UNP O27985
A	-13	VAL	-	EXPRESSION TAG	UNP O27985
A	-12	ASP	-	EXPRESSION TAG	UNP O27985
A	-11	LEU	-	EXPRESSION TAG	UNP O27985
A	-10	GLY	-	EXPRESSION TAG	UNP O27985
A	-9	THR	-	EXPRESSION TAG	UNP O27985
A	-8	GLU	-	EXPRESSION TAG	UNP O27985
A	-7	ASN	-	EXPRESSION TAG	UNP O27985
A	-6	LEU	-	EXPRESSION TAG	UNP O27985
A	-5	TYR	-	EXPRESSION TAG	UNP O27985
A	-4	PHE	-	EXPRESSION TAG	UNP O27985
A	-3	GLN	-	EXPRESSION TAG	UNP O27985

*Continued on next page...*

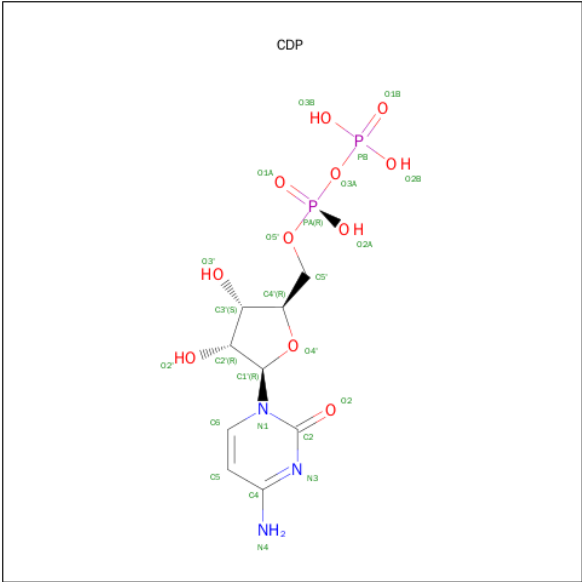
*Continued from previous page...*

Chain	Residue	Modelled	Actual	Comment	Reference
A	-2	SER	-	EXPRESSION TAG	UNP O27985
A	-1	ASN	-	EXPRESSION TAG	UNP O27985
A	0	ALA	-	EXPRESSION TAG	UNP O27985
B	-27	MET	-	EXPRESSION TAG	UNP O27985
B	-26	HIS	-	EXPRESSION TAG	UNP O27985
B	-25	HIS	-	EXPRESSION TAG	UNP O27985
B	-24	HIS	-	EXPRESSION TAG	UNP O27985
B	-23	HIS	-	EXPRESSION TAG	UNP O27985
B	-22	HIS	-	EXPRESSION TAG	UNP O27985
B	-21	HIS	-	EXPRESSION TAG	UNP O27985
B	-20	HIS	-	EXPRESSION TAG	UNP O27985
B	-19	HIS	-	EXPRESSION TAG	UNP O27985
B	-18	HIS	-	EXPRESSION TAG	UNP O27985
B	-17	HIS	-	EXPRESSION TAG	UNP O27985
B	-16	SER	-	EXPRESSION TAG	UNP O27985
B	-15	SER	-	EXPRESSION TAG	UNP O27985
B	-14	GLY	-	EXPRESSION TAG	UNP O27985
B	-13	VAL	-	EXPRESSION TAG	UNP O27985
B	-12	ASP	-	EXPRESSION TAG	UNP O27985
B	-11	LEU	-	EXPRESSION TAG	UNP O27985
B	-10	GLY	-	EXPRESSION TAG	UNP O27985
B	-9	THR	-	EXPRESSION TAG	UNP O27985
B	-8	GLU	-	EXPRESSION TAG	UNP O27985
B	-7	ASN	-	EXPRESSION TAG	UNP O27985
B	-6	LEU	-	EXPRESSION TAG	UNP O27985
B	-5	TYR	-	EXPRESSION TAG	UNP O27985
B	-4	PHE	-	EXPRESSION TAG	UNP O27985
B	-3	GLN	-	EXPRESSION TAG	UNP O27985
B	-2	SER	-	EXPRESSION TAG	UNP O27985
B	-1	ASN	-	EXPRESSION TAG	UNP O27985
B	0	ALA	-	EXPRESSION TAG	UNP O27985

- Molecule 2 is CALCIUM ION (three-letter code: CA) (formula: Ca).

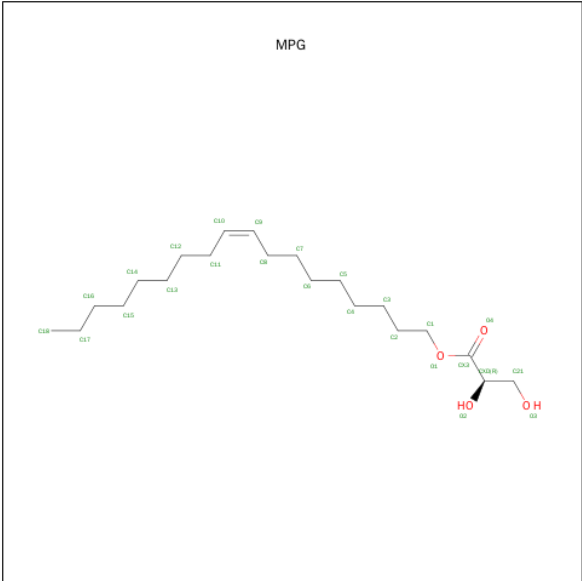
Mol	Chain	Residues	Atoms	ZeroOcc	AltConf
2	B	2	Total Ca 2 2	0	0
2	A	2	Total Ca 2 2	0	0

- Molecule 3 is CYTIDINE-5'-DIPHOSPHATE (three-letter code: CDP) (formula: C<sub>9</sub>H<sub>15</sub>N<sub>3</sub>O<sub>11</sub>P<sub>2</sub>).



Mol	Chain	Residues	Atoms						ZeroOcc	AltConf
3	A	1	Total	C	H	N	O	P	0	0
			37	9	12	3	11	2		
3	B	1	Total	C	H	N	O	P	0	1
			70	18	24	6	19	3		

- Molecule 4 is 1-MONOOLEOYL-RAC-GLYCEROL (three-letter code: MPG) (formula:  $C_{21}H_{40}O_4$ ).



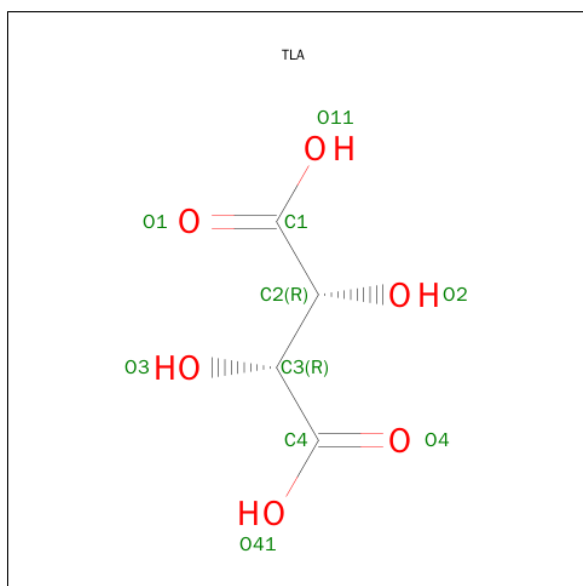
Mol	Chain	Residues	Atoms		ZeroOcc	AltConf
4	A	1	Total	C	0	0
			7	7		

Continued on next page...

Continued from previous page...

Mol	Chain	Residues	Atoms	ZeroOcc	AltConf
4	A	1	Total C 7 7	0	0
4	A	1	Total C 7 7	0	0
4	A	1	Total C 7 7	0	0
4	A	1	Total C 7 7	0	0
4	B	1	Total C 7 7	0	0
4	B	1	Total C 7 7	0	0
4	B	1	Total C 7 7	0	0
4	B	1	Total C 7 7	0	0

- Molecule 5 is L(+)-TARTARIC ACID (three-letter code: TLA) (formula:  $C_4H_6O_6$ ).



Mol	Chain	Residues	Atoms	ZeroOcc	AltConf
5	A	1	Total C H O 14 4 4 6	0	0
5	B	1	Total C H O 14 4 4 6	0	0

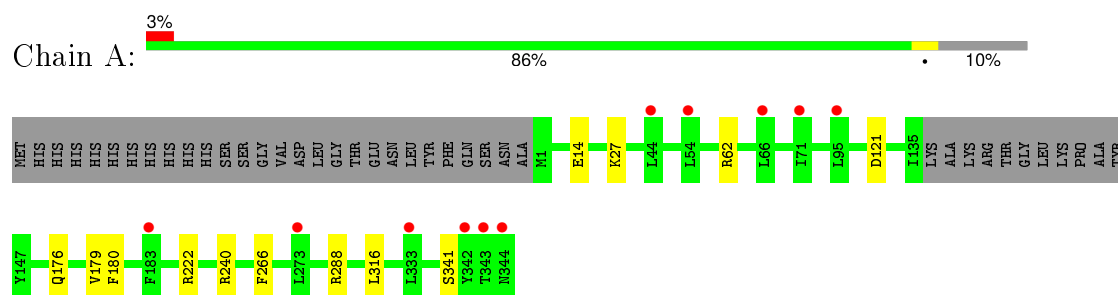
- Molecule 6 is water.

Mol	Chain	Residues	Atoms		ZeroOcc	AltConf
6	A	62	Total 62	O 62	0	0
6	B	82	Total 82	O 82	0	0

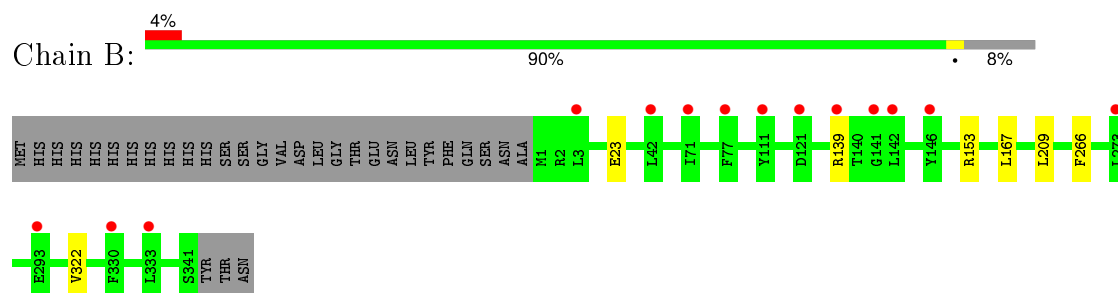
### 3 Residue-property plots [i](#)

These plots are drawn for all protein, RNA and DNA chains in the entry. The first graphic for a chain summarises the proportions of errors displayed in the second graphic. The second graphic shows the sequence view annotated by issues in geometry and electron density. Residues are color-coded according to the number of geometric quality criteria for which they contain at least one outlier: green = 0, yellow = 1, orange = 2 and red = 3 or more. A red dot above a residue indicates a poor fit to the electron density ( $\text{RSRZ} > 2$ ). Stretches of 2 or more consecutive residues without any outlier are shown as a green connector. Residues present in the sample, but not in the model, are shown in grey.

- Molecule 1: AF2299, a CDP-alcohol phosphotransferase



- Molecule 1: AF2299, a CDP-alcohol phosphotransferase



## 4 Data and refinement statistics

Property	Value	Source
Space group	P 1 21 1	Depositor
Cell constants a, b, c, $\alpha$ , $\beta$ , $\gamma$	46.33Å 90.67Å 106.44Å 90.00° 92.07° 90.00°	Depositor
Resolution (Å)	46.30 – 2.10 53.19 – 2.10	Depositor EDS
% Data completeness (in resolution range)	98.2 (46.30-2.10) 88.1 (53.19-2.10)	Depositor EDS
$R_{merge}$	0.12	Depositor
$R_{sym}$	(Not available)	Depositor
$\langle I/\sigma(I) \rangle$ <sup>1</sup>	1.17 (at 2.10Å)	Xtriage
Refinement program	PHENIX (phenix.refine: dev_1558)	Depositor
R, $R_{free}$	0.226 , 0.262 0.236 , 0.265	Depositor DCC
$R_{free}$ test set	2523 reflections (5.27%)	DCC
Wilson B-factor (Å <sup>2</sup> )	39.9	Xtriage
Anisotropy	0.443	Xtriage
Bulk solvent $k_{sol}$ (e/Å <sup>3</sup> ), $B_{sol}$ (Å <sup>2</sup> )	(Not available) , (Not available)	EDS
Estimated twinning fraction	0.075 for h,-k,-l	Xtriage
L-test for twinning <sup>2</sup>	$\langle  L  \rangle = 0.47$ , $\langle L^2 \rangle = 0.30$	Xtriage
Outliers	0 of 50389 reflections	Xtriage
$F_o, F_c$ correlation	0.94	EDS
Total number of atoms	10988	wwPDB-VP
Average B, all atoms (Å <sup>2</sup> )	51.0	wwPDB-VP

Xtriage's analysis on translational NCS is as follows: *The largest off-origin peak in the Patterson function is 5.57% of the height of the origin peak. No significant pseudotranslation is detected.*

<sup>1</sup>Intensities estimated from amplitudes.

<sup>2</sup>Theoretical values of  $\langle |L| \rangle$ ,  $\langle L^2 \rangle$  for acentric reflections are 0.5, 0.375 respectively for untwinned datasets, and 0.333, 0.2 for perfectly twinned datasets.

## 5 Model quality

### 5.1 Standard geometry

Bond lengths and bond angles in the following residue types are not validated in this section: MPG, CA, CDP, TLA

The Z score for a bond length (or angle) is the number of standard deviations the observed value is removed from the expected value. A bond length (or angle) with  $|Z| > 5$  is considered an outlier worth inspection. RMSZ is the root-mean-square of all Z scores of the bond lengths (or angles).

Mol	Chain	Bond lengths		Bond angles	
		RMSZ	$\# Z  > 5$	RMSZ	$\# Z  > 5$
1	A	0.22	0/2645	0.38	0/3592
1	B	0.23	0/2741	0.38	0/3718
All	All	0.22	0/5386	0.38	0/7310

There are no bond length outliers.

There are no bond angle outliers.

There are no chirality outliers.

There are no planarity outliers.

### 5.2 Too-close contacts

In the following table, the Non-H and H(model) columns list the number of non-hydrogen atoms and hydrogen atoms in the chain respectively. The H(added) column lists the number of hydrogen atoms added and optimized by MolProbity. The Clashes column lists the number of clashes within the asymmetric unit, whereas Symm-Clashes lists symmetry related clashes.

Mol	Chain	Non-H	H(model)	H(added)	Clashes	Symm-Clashes
1	A	2595	2621	2623	7	0
1	B	2687	2739	2741	4	0
2	A	2	0	0	0	0
2	B	2	0	0	0	0
3	A	25	12	11	0	0
3	B	46	24	22	0	0
4	A	35	0	65	6	0
4	B	28	0	52	5	0
5	A	10	4	4	1	0
5	B	10	4	4	1	0
6	A	62	0	0	1	0

*Continued on next page...*

*Continued from previous page...*

Mol	Chain	Non-H	H(model)	H(added)	Clashes	Symm-Clashes
6	B	82	0	0	1	0
All	All	5584	5404	5522	16	0

The all-atom clashscore is defined as the number of clashes found per 1000 atoms (including hydrogen atoms). The all-atom clashscore for this structure is 1.

All (16) close contacts within the same asymmetric unit are listed below, sorted by their clash magnitude.

Atom-1	Atom-2	Interatomic distance (Å)	Clash overlap (Å)
4:A:405:MPG:H172	4:A:408:MPG:H151	1.67	0.75
1:B:167:LEU:HD23	4:B:404:MPG:H181	1.75	0.69
1:B:153:ARG:NH1	6:B:574:HOH:O	2.28	0.65
1:A:27:LYS:NZ	6:A:527:HOH:O	2.31	0.63
1:B:322:VAL:HG13	4:B:407:MPG:H172	1.82	0.61
5:A:409:TLA:O2	5:A:409:TLA:O41	2.18	0.61
1:B:167:LEU:CD2	4:B:404:MPG:H181	2.35	0.57
1:A:176:GLN:HG2	4:A:405:MPG:H162	1.91	0.53
1:A:62:ARG:NH2	1:A:222:ARG:O	2.41	0.51
4:B:404:MPG:H152	4:B:405:MPG:C14	2.40	0.51
1:A:316:LEU:HD21	4:A:404:MPG:H171	1.91	0.51
5:B:408:TLA:O41	5:B:408:TLA:O2	2.28	0.50
1:A:180:PHE:CD2	4:A:406:MPG:H172	2.47	0.50
1:A:179:VAL:HG11	4:A:408:MPG:H171	1.95	0.49
4:B:404:MPG:H152	4:B:405:MPG:H142	1.97	0.46
1:A:180:PHE:CE2	4:A:406:MPG:H172	2.56	0.40

There are no symmetry-related clashes.

## 5.3 Torsion angles ⓘ

### 5.3.1 Protein backbone ⓘ

In the following table, the Percentiles column shows the percent Ramachandran outliers of the chain as a percentile score with respect to all X-ray entries followed by that with respect to entries of similar resolution.

The Analysed column shows the number of residues for which the backbone conformation was analysed, and the total number of residues.

Mol	Chain	Analysed	Favoured	Allowed	Outliers	Percentiles	
1	A	329/372 (88%)	321 (98%)	7 (2%)	1 (0%)	46	45
1	B	339/372 (91%)	331 (98%)	8 (2%)	0	100	100
All	All	668/744 (90%)	652 (98%)	15 (2%)	1 (0%)	56	58

All (1) Ramachandran outliers are listed below:

Mol	Chain	Res	Type
1	A	341	SER

### 5.3.2 Protein sidechains ⓘ

In the following table, the Percentiles column shows the percent sidechain outliers of the chain as a percentile score with respect to all X-ray entries followed by that with respect to entries of similar resolution.

The Analysed column shows the number of residues for which the sidechain conformation was analysed, and the total number of residues.

Mol	Chain	Analysed	Rotameric	Outliers	Percentiles	
1	A	272/322 (84%)	267 (98%)	5 (2%)	66	72
1	B	283/322 (88%)	279 (99%)	4 (1%)	74	80
All	All	555/644 (86%)	546 (98%)	9 (2%)	70	76

All (9) residues with a non-rotameric sidechain are listed below:

Mol	Chain	Res	Type
1	A	14	GLU
1	A	121	ASP
1	A	240	ARG
1	A	266	PHE
1	A	288	ARG
1	B	23	GLU
1	B	139	ARG
1	B	209	LEU
1	B	266	PHE

Some sidechains can be flipped to improve hydrogen bonding and reduce clashes. There are no such sidechains identified.

### 5.3.3 RNA ⓘ

There are no RNA molecules in this entry.

## 5.4 Non-standard residues in protein, DNA, RNA chains ⓘ

There are no non-standard protein/DNA/RNA residues in this entry.

## 5.5 Carbohydrates ⓘ

There are no carbohydrates in this entry.

## 5.6 Ligand geometry ⓘ

Of 18 ligands modelled in this entry, 4 are monoatomic - leaving 14 for Mogul analysis.

In the following table, the Counts columns list the number of bonds (or angles) for which Mogul statistics could be retrieved, the number of bonds (or angles) that are observed in the model and the number of bonds (or angles) that are defined in the chemical component dictionary. The Link column lists molecule types, if any, to which the group is linked. The Z score for a bond length (or angle) is the number of standard deviations the observed value is removed from the expected value. A bond length (or angle) with  $|Z| > 2$  is considered an outlier worth inspection. RMSZ is the root-mean-square of all Z scores of the bond lengths (or angles).

Mol	Type	Chain	Res	Link	Bond lengths			Bond angles		
					Counts	RMSZ	$\# Z  > 2$	Counts	RMSZ	$\# Z  > 2$
3	CDP	A	403	2	19,26,26	4.78	9 (47%)	27,40,40	1.24	3 (11%)
4	MPG	A	404	-	6,6,24	0.14	0	5,5,25	0.30	0
4	MPG	A	405	-	6,6,24	0.14	0	5,5,25	0.30	0
4	MPG	A	406	-	6,6,24	0.14	0	5,5,25	0.31	0
4	MPG	A	407	-	6,6,24	0.13	0	5,5,25	0.31	0
4	MPG	A	408	-	6,6,24	0.14	0	5,5,25	0.29	0
5	TLA	A	409	-	3,9,9	0.59	0	6,12,12	1.04	0
3	CDP	B	403[A]	2	17,22,26	5.04	9 (52%)	22,33,40	1.07	1 (4%)
3	CDP	B	403[B]	2	19,26,26	4.77	9 (47%)	27,40,40	1.19	3 (11%)
4	MPG	B	404	-	6,6,24	0.14	0	5,5,25	0.28	0
4	MPG	B	405	-	6,6,24	0.14	0	5,5,25	0.29	0
4	MPG	B	406	-	6,6,24	0.14	0	5,5,25	0.31	0
4	MPG	B	407	-	6,6,24	0.14	0	5,5,25	0.30	0
5	TLA	B	408	-	3,9,9	0.62	0	6,12,12	1.31	1 (16%)

In the following table, the Chirals column lists the number of chiral outliers, the number of chiral centers analysed, the number of these observed in the model and the number defined in the chemical

component dictionary. Similar counts are reported in the Torsion and Rings columns. '-' means no outliers of that kind were identified.

Mol	Type	Chain	Res	Link	Chirals	Torsions	Rings
3	CDP	A	403	2	-	0/12/32/32	0/2/2/2
4	MPG	A	404	-	-	0/4/4/25	0/0/0/0
4	MPG	A	405	-	-	0/4/4/25	0/0/0/0
4	MPG	A	406	-	-	0/4/4/25	0/0/0/0
4	MPG	A	407	-	-	0/4/4/25	0/0/0/0
4	MPG	A	408	-	-	0/4/4/25	0/0/0/0
5	TLA	A	409	-	-	0/4/12/12	0/0/0/0
3	CDP	B	403[A]	2	-	0/6/26/32	0/2/2/2
3	CDP	B	403[B]	2	-	0/12/32/32	0/2/2/2
4	MPG	B	404	-	-	0/4/4/25	0/0/0/0
4	MPG	B	405	-	-	0/4/4/25	0/0/0/0
4	MPG	B	406	-	-	0/4/4/25	0/0/0/0
4	MPG	B	407	-	-	0/4/4/25	0/0/0/0
5	TLA	B	408	-	-	0/4/12/12	0/0/0/0

All (27) bond length outliers are listed below:

Mol	Chain	Res	Type	Atoms	Z	Observed(Å)	Ideal(Å)
3	B	403[B]	CDP	O4'-C4'	-6.25	1.30	1.45
3	B	403[A]	CDP	O4'-C4'	-6.23	1.30	1.45
3	A	403	CDP	O4'-C4'	-6.22	1.30	1.45
3	B	403[A]	CDP	O3'-C3'	-3.14	1.35	1.43
3	B	403[B]	CDP	O3'-C3'	-3.09	1.35	1.43
3	A	403	CDP	O3'-C3'	-3.08	1.35	1.43
3	B	403[B]	CDP	O2'-C2'	2.71	1.49	1.43
3	B	403[A]	CDP	O2'-C2'	2.71	1.49	1.43
3	A	403	CDP	O2'-C2'	2.75	1.49	1.43
3	A	403	CDP	C5-C4	3.17	1.48	1.40
3	B	403[A]	CDP	C5-C4	3.19	1.48	1.40
3	B	403[B]	CDP	C5-C4	3.19	1.48	1.40
3	B	403[A]	CDP	C4-N4	3.38	1.45	1.35
3	B	403[B]	CDP	C4-N4	3.39	1.45	1.35
3	A	403	CDP	C4-N4	3.39	1.45	1.35
3	B	403[B]	CDP	C4-N3	3.84	1.42	1.35
3	A	403	CDP	C4-N3	3.85	1.42	1.35
3	B	403[A]	CDP	C4-N3	3.88	1.42	1.35
3	A	403	CDP	C6-N1	5.16	1.43	1.35
3	B	403[B]	CDP	C6-N1	5.18	1.43	1.35
3	B	403[A]	CDP	C6-N1	5.22	1.43	1.35
3	A	403	CDP	C6-C5	5.31	1.49	1.38
3	B	403[A]	CDP	C6-C5	5.37	1.49	1.38

*Continued on next page...*

*Continued from previous page...*

Mol	Chain	Res	Type	Atoms	Z	Observed(Å)	Ideal(Å)
3	B	403[B]	CDP	C6-C5	5.39	1.49	1.38
3	B	403[B]	CDP	O4'-C1'	16.69	1.62	1.41
3	B	403[A]	CDP	O4'-C1'	16.69	1.62	1.41
3	A	403	CDP	O4'-C1'	16.78	1.62	1.41

All (8) bond angle outliers are listed below:

Mol	Chain	Res	Type	Atoms	Z	Observed(°)	Ideal(°)
3	B	403[B]	CDP	PA-O3A-PB	-2.67	123.71	132.67
3	A	403	CDP	PA-O3A-PB	-2.46	124.42	132.67
5	B	408	TLA	C1-C2-C3	-2.41	108.40	113.35
3	B	403[B]	CDP	O3A-PA-O5'	2.28	108.98	102.94
3	A	403	CDP	O3A-PA-O5'	2.92	110.69	102.94
3	B	403[A]	CDP	C2-N3-C4	3.30	120.27	115.61
3	B	403[B]	CDP	C2-N3-C4	3.31	120.28	115.61
3	A	403	CDP	C2-N3-C4	3.48	120.52	115.61

There are no chirality outliers.

There are no torsion outliers.

There are no ring outliers.

9 monomers are involved in 13 short contacts:

Mol	Chain	Res	Type	Clashes	Symm-Clashes
4	A	404	MPG	1	0
4	A	405	MPG	2	0
4	A	406	MPG	2	0
4	A	408	MPG	2	0
5	A	409	TLA	1	0
4	B	404	MPG	4	0
4	B	405	MPG	2	0
4	B	407	MPG	1	0
5	B	408	TLA	1	0

## 5.7 Other polymers ⓘ

There are no such residues in this entry.

## 5.8 Polymer linkage issues ⓘ

There are no chain breaks in this entry.

## 6 Fit of model and data ⓘ

### 6.1 Protein, DNA and RNA chains ⓘ

In the following table, the column labelled ‘#RSRZ> 2’ contains the number (and percentage) of RSRZ outliers, followed by percent RSRZ outliers for the chain as percentile scores relative to all X-ray entries and entries of similar resolution. The OWAB column contains the minimum, median, 95<sup>th</sup> percentile and maximum values of the occupancy-weighted average B-factor per residue. The column labelled ‘Q< 0.9’ lists the number of (and percentage) of residues with an average occupancy less than 0.9.

Mol	Chain	Analysed	<RSRZ>	#RSRZ>2	OWAB(Å <sup>2</sup> )	Q<0.9
1	A	333/372 (89%)	0.47	11 (3%) 50 59	32, 45, 65, 90	0
1	B	341/372 (91%)	0.37	14 (4%) 41 50	30, 45, 62, 97	0
All	All	674/744 (90%)	0.42	25 (3%) 45 54	30, 45, 64, 97	0

All (25) RSRZ outliers are listed below:

Mol	Chain	Res	Type	RSRZ
1	A	343	THR	8.8
1	A	342	TYR	6.0
1	A	344	ASN	4.8
1	A	95	LEU	3.5
1	B	330	PHE	3.1
1	B	146	TYR	3.0
1	B	142	LEU	2.7
1	B	141	GLY	2.7
1	B	71	ILE	2.7
1	B	273	LEU	2.6
1	A	183	PHE	2.6
1	B	3	LEU	2.5
1	B	121	ASP	2.5
1	B	139	ARG	2.5
1	A	273	LEU	2.4
1	B	333	LEU	2.4
1	A	71	ILE	2.3
1	B	111	TYR	2.3
1	A	54	LEU	2.3
1	A	66	LEU	2.2
1	A	44	LEU	2.2
1	A	333	LEU	2.2
1	B	77	PHE	2.2
1	B	293	GLU	2.1

*Continued on next page...*

*Continued from previous page...*

Mol	Chain	Res	Type	RSRZ
1	B	42	LEU	2.1

## 6.2 Non-standard residues in protein, DNA, RNA chains [i](#)

There are no non-standard protein/DNA/RNA residues in this entry.

## 6.3 Carbohydrates [i](#)

There are no carbohydrates in this entry.

## 6.4 Ligands [i](#)

In the following table, the Atoms column lists the number of modelled atoms in the group and the number defined in the chemical component dictionary. LLDF column lists the quality of electron density of the group with respect to its neighbouring residues in protein, DNA or RNA chains. The B-factors column lists the minimum, median, 95<sup>th</sup> percentile and maximum values of B factors of atoms in the group. The column labelled 'Q< 0.9' lists the number of atoms with occupancy less than 0.9.

Mol	Type	Chain	Res	Atoms	RSCC	RSR	LLDF	B-factors(Å <sup>2</sup> )	Q<0.9
4	MPG	A	404	7/25	0.52	0.67	42.54	53,63,68,80	0
5	TLA	A	409	10/10	0.83	0.19	4.36	44,57,66,68	0
4	MPG	B	407	7/25	0.65	0.27	4.10	42,47,50,54	0
4	MPG	B	405	7/25	0.88	0.21	3.66	40,43,47,49	0
2	CA	A	402	1/1	0.86	0.16	2.36	40,40,40,40	1
5	TLA	B	408	10/10	0.84	0.17	0.88	45,55,65,72	0
3	CDP	B	403[B]	25/25	0.94	0.17	0.79	34,39,47,53	37
3	CDP	B	403[A]	21/25	0.94	0.17	0.76	34,39,46,47	33
4	MPG	A	407	7/25	0.86	0.17	0.46	40,43,46,46	0
4	MPG	A	406	7/25	0.93	0.16	0.36	40,44,47,49	0
2	CA	B	402	1/1	0.92	0.13	0.30	37,37,37,37	1
4	MPG	A	405	7/25	0.78	0.18	0.12	47,47,51,55	0
3	CDP	A	403	25/25	0.92	0.12	-0.62	38,48,73,89	0
2	CA	B	401	1/1	0.96	0.12	-0.85	36,36,36,36	0
2	CA	A	401	1/1	0.91	0.10	-2.22	47,47,47,47	0
4	MPG	A	408	7/25	0.82	0.19	-	49,51,55,56	0
4	MPG	B	404	7/25	0.62	0.64	-	51,54,60,61	7
4	MPG	B	406	7/25	0.87	0.29	-	48,50,56,59	0

## 6.5 Other polymers [i](#)

There are no such residues in this entry.