



Full wwPDB X-ray Structure Validation Report ⓘ

Feb 1, 2016 – 04:48 AM GMT

PDB ID : 2OAE
Title : Crystal structure of rat dipeptidyl peptidase (DPPIV) with thiazole-based peptide mimetic #31
Authors : Longenecker, K.L.; Shuai, Q.; Patel, J.; Wiedeman, P.
Deposited on : 2006-12-15
Resolution : 3.00 Å(reported)

This is a Full wwPDB X-ray Structure Validation Report for a publicly released PDB entry.
We welcome your comments at validation@mail.wwpdb.org
A user guide is available at
<http://wwpdb.org/validation/2016/XrayValidationReportHelp>
with specific help available everywhere you see the ⓘ symbol.

The following versions of software and data (see [references ⓘ](#)) were used in the production of this report:

MolProbity : 4.02b-467
Mogul : 1.7 (RC4), CSD as536be (2015)
Xtriage (Phenix) : 1.9-1692
EDS : rb-20026688
Percentile statistics : 20151230.v01 (using entries in the PDB archive December 30th 2015)
Refmac : 5.8.0135
CCP4 : 6.5.0
Ideal geometry (proteins) : Engh & Huber (2001)
Ideal geometry (DNA, RNA) : Parkinson et al. (1996)
Validation Pipeline (wwPDB-VP) : trunk26865

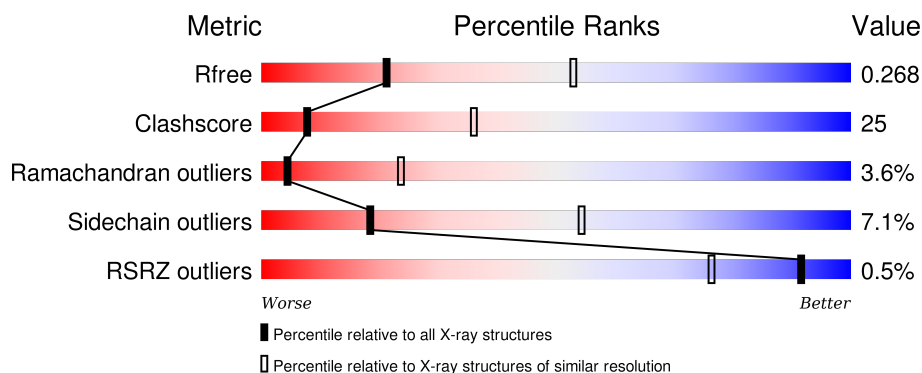
1 Overall quality at a glance

The following experimental techniques were used to determine the structure:

X-RAY DIFFRACTION

The reported resolution of this entry is 3.00 Å.

Percentile scores (ranging between 0-100) for global validation metrics of the entry are shown in the following graphic. The table shows the number of entries on which the scores are based.



Metric	Whole archive (#Entries)	Similar resolution (#Entries, resolution range(Å))
R_{free}	91344	1578 (3.00-3.00)
Clashscore	102246	1912 (3.00-3.00)
Ramachandran outliers	100387	1853 (3.00-3.00)
Sidechain outliers	100360	1856 (3.00-3.00)
RSRZ outliers	91569	1592 (3.00-3.00)

The table below summarises the geometric issues observed across the polymeric chains and their fit to the electron density. The red, orange, yellow and green segments on the lower bar indicate the fraction of residues that contain outliers for ≥ 3 , 2, 1 and 0 types of geometric quality criteria. A grey segment represents the fraction of residues that are not modelled. The numeric value for each fraction is indicated below the corresponding segment, with a dot representing fractions $\leq 5\%$. The upper red bar (where present) indicates the fraction of residues that have poor fit to the electron density. The numeric value is given above the bar.

Mol	Chain	Length	Quality of chain
1	A	730	
1	B	730	

The following table lists non-polymeric compounds, carbohydrate monomers and non-standard residues in protein, DNA, RNA chains that are outliers for geometric or electron-density-fit criteria:

Mol	Type	Chain	Res	Chirality	Geometry	Clashes	Electron density
2	SO4	A	801	-	-	-	X

2 Entry composition [i](#)

There are 3 unique types of molecules in this entry. The entry contains 11866 atoms, of which 0 are hydrogens and 0 are deuteriums.

In the tables below, the ZeroOcc column contains the number of atoms modelled with zero occupancy, the AltConf column contains the number of residues with at least one atom in alternate conformation and the Trace column contains the number of residues modelled with at most 2 atoms.

- Molecule 1 is a protein called Dipeptidyl peptidase 4.

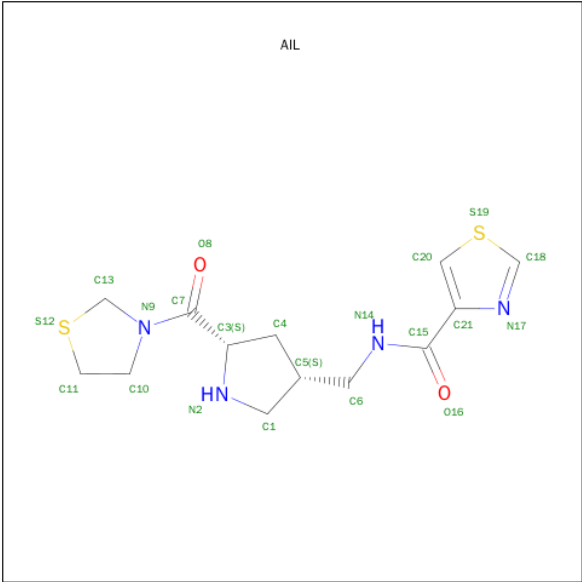
Mol	Chain	Residues	Atoms					ZeroOcc	AltConf	Trace
1	A	730	Total	C	N	O	S	0	0	0
			5920	3789	981	1124	26			
1	B	730	Total	C	N	O	S	0	0	0
			5920	3789	981	1124	26			

- Molecule 2 is SULFATE ION (three-letter code: SO₄) (formula: O₄S).



Mol	Chain	Residues	Atoms			ZeroOcc	AltConf
2	A	1	Total	O	S	0	0
			5	4	1		

- Molecule 3 is N-([(3S,5S)-5-(1,3-THIAZOLIDIN-3-YLCARBONYL)PYRROLIDIN-3-YL]METHYL)-1,3-THIAZOLE-4-CARBOXAMIDE (three-letter code: AIL) (formula: C₁₃H₁₈N₄O₂S₂).

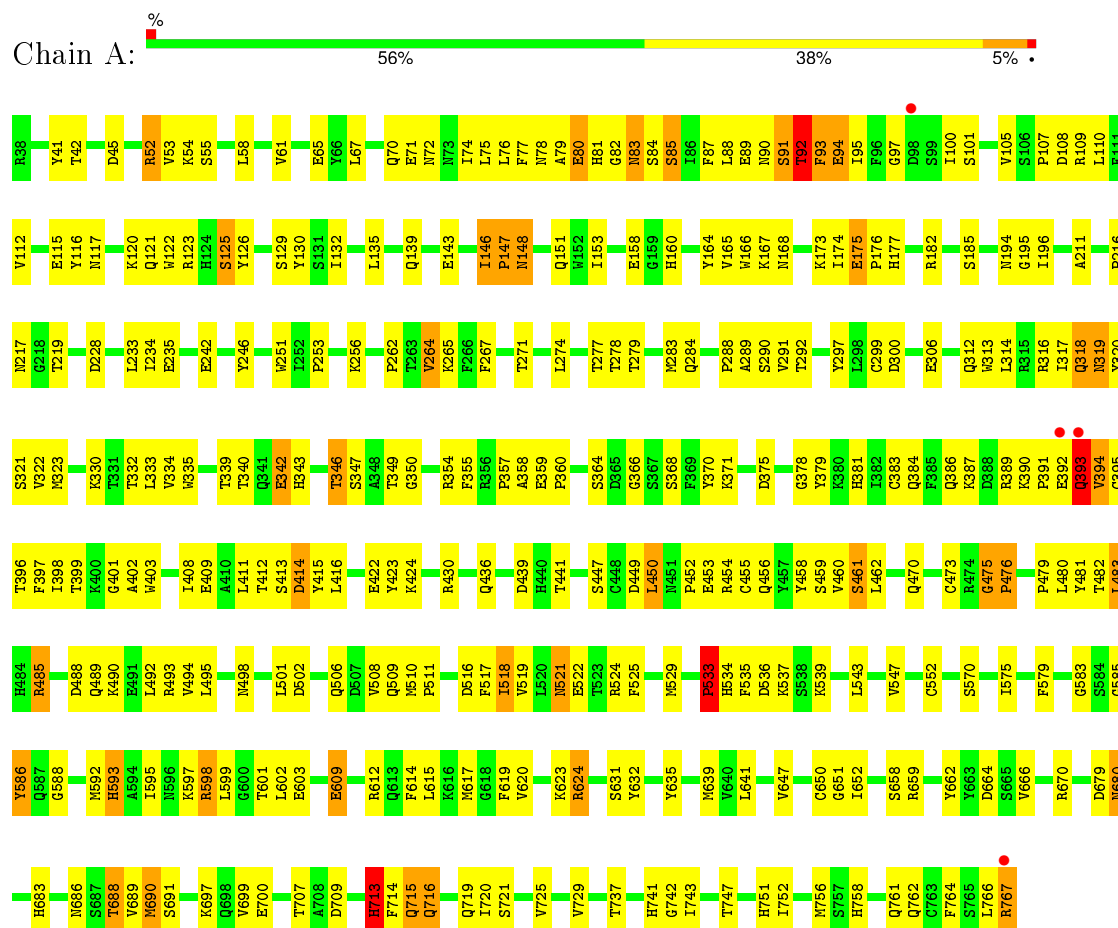


Mol	Chain	Residues	Atoms					ZeroOcc	AltConf
3	A	1	Total	C	N	O	S	0	0
			21	13	4	2	2		

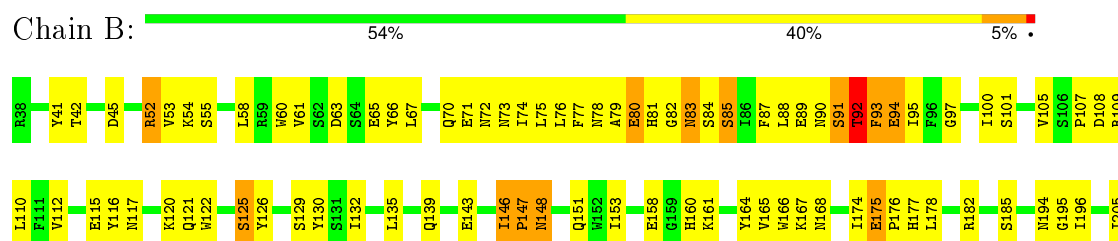
3 Residue-property plots

These plots are drawn for all protein, RNA and DNA chains in the entry. The first graphic for a chain summarises the proportions of errors displayed in the second graphic. The second graphic shows the sequence view annotated by issues in geometry and electron density. Residues are color-coded according to the number of geometric quality criteria for which they contain at least one outlier: green = 0, yellow = 1, orange = 2 and red = 3 or more. A red dot above a residue indicates a poor fit to the electron density ($\text{RSRZ} > 2$). Stretches of 2 or more consecutive residues without any outlier are shown as a green connector. Residues present in the sample, but not in the model, are shown in grey.

- Molecule 1: Dipeptidyl peptidase 4



- Molecule 1: Dipeptidyl peptidase 4





4 Data and refinement statistics

Property	Value	Source
Space group	P 21 3	Depositor
Cell constants a, b, c, α , β , γ	208.35Å 208.35Å 208.35Å 90.00° 90.00° 90.00°	Depositor
Resolution (Å)	20.00 – 3.00 19.96 – 3.00	Depositor EDS
% Data completeness (in resolution range)	99.7 (20.00-3.00) 100.0 (19.96-3.00)	Depositor EDS
R_{merge}	0.14	Depositor
R_{sym}	(Not available)	Depositor
$\langle I/\sigma(I) \rangle$ ¹	1.95 (at 2.98Å)	Xtriage
Refinement program	CNS	Depositor
R, R_{free}	0.249 , 0.280 0.240 , 0.268	Depositor DCC
R_{free} test set	3039 reflections (5.07%)	DCC
Wilson B-factor (Å ²)	57.9	Xtriage
Anisotropy	0.000	Xtriage
Bulk solvent k_{sol} (e/Å ³), B_{sol} (Å ²)	0.33 , 39.0	EDS
Estimated twinning fraction	0.001 for l,-k,h	Xtriage
L-test for twinning ²	$\langle L \rangle = 0.52$, $\langle L^2 \rangle = 0.35$	Xtriage
Outliers	2 of 59968 reflections (0.003%)	Xtriage
F_o, F_c correlation	0.91	EDS
Total number of atoms	11866	wwPDB-VP
Average B, all atoms (Å ²)	49.0	wwPDB-VP

Xtriage's analysis on translational NCS is as follows: *The largest off-origin peak in the Patterson function is 1.81% of the height of the origin peak. No significant pseudotranslation is detected.*

¹Intensities estimated from amplitudes.

²Theoretical values of $\langle |L| \rangle$, $\langle L^2 \rangle$ for acentric reflections are 0.5, 0.375 respectively for untwinned datasets, and 0.333, 0.2 for perfectly twinned datasets.

5 Model quality

5.1 Standard geometry

Bond lengths and bond angles in the following residue types are not validated in this section: AIL, SO4

The Z score for a bond length (or angle) is the number of standard deviations the observed value is removed from the expected value. A bond length (or angle) with $|Z| > 5$ is considered an outlier worth inspection. RMSZ is the root-mean-square of all Z scores of the bond lengths (or angles).

Mol	Chain	Bond lengths		Bond angles	
		RMSZ	# Z >5	RMSZ	# Z >5
1	A	0.48	0/6088	0.71	1/8278 (0.0%)
1	B	0.51	0/6088	0.71	1/8278 (0.0%)
All	All	0.50	0/12176	0.71	2/16556 (0.0%)

There are no bond length outliers.

All (2) bond angle outliers are listed below:

Mol	Chain	Res	Type	Atoms	Z	Observed(°)	Ideal(°)
1	A	713	HIS	N-CA-C	7.03	129.98	111.00
1	B	713	HIS	N-CA-C	6.85	129.50	111.00

There are no chirality outliers.

There are no planarity outliers.

5.2 Too-close contacts

In the following table, the Non-H and H(model) columns list the number of non-hydrogen atoms and hydrogen atoms in the chain respectively. The H(added) column lists the number of hydrogen atoms added and optimized by MolProbity. The Clashes column lists the number of clashes within the asymmetric unit, whereas Symm-Clashes lists symmetry related clashes.

Mol	Chain	Non-H	H(model)	H(added)	Clashes	Symm-Clashes
1	A	5920	0	5632	285	0
1	B	5920	0	5632	303	0
2	A	5	0	0	1	0
3	A	21	0	18	1	0
All	All	11866	0	11282	582	0

The all-atom clashscore is defined as the number of clashes found per 1000 atoms (including

hydrogen atoms). The all-atom clashscore for this structure is 25.

All (582) close contacts within the same asymmetric unit are listed below, sorted by their clash magnitude.

Atom-1	Atom-2	Interatomic distance (Å)	Clash overlap (Å)
1:A:52:ARG:HH11	1:A:52:ARG:HB2	1.10	1.11
1:B:761:GLN:HB3	1:B:767:ARG:HB3	1.30	1.11
1:B:52:ARG:HB2	1:B:52:ARG:HH11	1.12	1.09
1:A:761:GLN:HB3	1:A:767:ARG:HB3	1.27	1.09
1:B:688:THR:HG22	1:B:691:SER:H	1.23	1.03
1:B:595:ILE:HD11	1:B:603:GLU:HB3	1.39	1.03
1:B:349:THR:HB	1:B:593:HIS:HD2	1.20	1.03
1:A:349:THR:HB	1:A:593:HIS:HD2	1.22	1.02
1:A:412:THR:HG22	1:A:414:ASP:H	1.23	0.99
1:A:595:ILE:HD11	1:A:603:GLU:HB3	1.41	0.99
1:B:460:VAL:HG22	1:B:461:SER:H	1.26	0.97
1:A:688:THR:HG22	1:A:691:SER:H	1.25	0.97
1:A:52:ARG:NH1	1:A:52:ARG:HB2	1.81	0.96
1:B:412:THR:HG22	1:B:414:ASP:H	1.28	0.94
1:A:460:VAL:HG22	1:A:461:SER:H	1.26	0.94
1:B:386:GLN:HG3	1:B:390:LYS:NZ	1.82	0.94
1:B:52:ARG:NH1	1:B:52:ARG:HB2	1.82	0.94
1:A:174:ILE:H	1:A:174:ILE:HD12	1.33	0.94
1:B:174:ILE:HD12	1:B:174:ILE:H	1.32	0.94
1:A:386:GLN:HG3	1:A:390:LYS:NZ	1.84	0.92
1:B:349:THR:HB	1:B:593:HIS:CD2	2.06	0.91
1:A:349:THR:HB	1:A:593:HIS:CD2	2.08	0.89
1:A:52:ARG:HH11	1:A:52:ARG:CB	1.87	0.86
1:B:52:ARG:CB	1:B:52:ARG:HH11	1.89	0.86
1:A:383:CYS:HB3	1:A:397:PHE:HA	1.58	0.84
1:B:91:SER:HA	1:B:94:GLU:OE1	1.79	0.83
1:B:383:CYS:HB3	1:B:397:PHE:HA	1.59	0.83
1:A:91:SER:HA	1:A:94:GLU:OE1	1.79	0.82
1:A:624:ARG:HB2	1:A:624:ARG:HH11	1.45	0.81
1:A:485:ARG:HG3	1:A:485:ARG:O	1.81	0.80
1:A:761:GLN:HB3	1:A:767:ARG:CB	2.11	0.79
1:A:460:VAL:HG22	1:A:461:SER:N	1.97	0.79
1:B:485:ARG:HG3	1:B:485:ARG:O	1.81	0.79
1:A:641:LEU:HD22	1:A:699:VAL:HG11	1.65	0.79
1:B:639:MET:CE	1:B:689:VAL:HA	2.13	0.79
1:B:460:VAL:HG22	1:B:461:SER:N	1.99	0.78
1:A:639:MET:CE	1:A:689:VAL:HA	2.12	0.78
1:B:449:ASP:O	1:B:452:PRO:HD3	1.84	0.78

Continued on next page...

Continued from previous page...

Atom-1	Atom-2	Interatomic distance (Å)	Clash overlap (Å)
1:A:761:GLN:CB	1:A:767:ARG:HB3	2.11	0.78
1:A:518:ILE:HD13	1:A:519:VAL:H	1.50	0.76
1:A:449:ASP:O	1:A:452:PRO:HD3	1.83	0.76
1:B:624:ARG:HB2	1:B:624:ARG:HH11	1.49	0.76
1:B:234:ILE:HD13	1:B:713:HIS:CE1	2.21	0.75
1:A:234:ILE:HD13	1:A:713:HIS:CE1	2.21	0.75
1:B:767:ARG:C	1:B:767:ARG:HD2	2.06	0.75
1:B:78:ASN:HB3	1:B:83:ASN:HB3	1.69	0.75
1:B:641:LEU:HD22	1:B:699:VAL:HG11	1.68	0.75
1:B:761:GLN:CB	1:B:767:ARG:HB3	2.14	0.74
1:B:91:SER:O	1:B:93:PHE:N	2.21	0.74
1:B:518:ILE:HD13	1:B:519:VAL:H	1.53	0.74
1:A:79:ALA:O	1:A:80:GLU:HB2	1.87	0.73
1:B:652:ILE:HG21	1:B:756:MET:HE2	1.70	0.73
1:B:403:TRP:CE3	1:B:422:GLU:HB2	2.23	0.73
1:B:277:THR:HG21	1:B:279:THR:O	1.89	0.73
1:B:688:THR:HG22	1:B:691:SER:N	2.02	0.72
1:A:91:SER:O	1:A:93:PHE:N	2.22	0.72
1:A:151:GLN:NE2	1:A:167:LYS:H	1.87	0.72
1:A:688:THR:HG22	1:A:691:SER:N	2.03	0.72
1:A:318:GLN:OE1	1:A:670:ARG:HD3	1.90	0.72
1:B:761:GLN:HB3	1:B:767:ARG:CB	2.14	0.72
1:A:277:THR:HG21	1:A:279:THR:O	1.89	0.71
1:A:78:ASN:HB3	1:A:83:ASN:HB3	1.71	0.71
1:A:392:GLU:C	1:A:393:GLN:HG3	2.09	0.71
1:A:485:ARG:NH2	1:A:490:LYS:HD3	2.05	0.71
1:B:392:GLU:C	1:B:393:GLN:HG3	2.11	0.71
1:B:79:ALA:O	1:B:80:GLU:HB2	1.90	0.70
1:B:612:ARG:HH11	1:B:612:ARG:HG3	1.56	0.70
1:A:256:LYS:NZ	1:A:713:HIS:HD2	1.90	0.70
1:B:318:GLN:OE1	1:B:670:ARG:HD3	1.91	0.70
1:B:235:GLU:HG2	1:B:251:TRP:HB3	1.73	0.70
1:A:107:PRO:HG2	1:A:158:GLU:O	1.92	0.69
1:A:586:TYR:CD1	1:A:586:TYR:N	2.60	0.69
1:A:403:TRP:CE3	1:A:422:GLU:HB2	2.26	0.69
1:A:235:GLU:HG2	1:A:251:TRP:HB3	1.74	0.69
1:B:151:GLN:NE2	1:B:167:LYS:H	1.89	0.69
1:B:256:LYS:NZ	1:B:713:HIS:HD2	1.90	0.69
1:B:483:LEU:HB3	1:B:495:LEU:HD11	1.74	0.69
1:A:386:GLN:HG3	1:A:390:LYS:HZ2	1.55	0.69
1:A:612:ARG:HG3	1:A:612:ARG:HH11	1.58	0.69

Continued on next page...

Continued from previous page...

Atom-1	Atom-2	Interatomic distance (Å)	Clash overlap (Å)
1:B:386:GLN:HG3	1:B:390:LYS:HZ2	1.58	0.68
1:B:485:ARG:NH2	1:B:490:LYS:HD3	2.08	0.68
1:A:483:LEU:HB3	1:A:495:LEU:HD11	1.76	0.68
1:B:107:PRO:HG2	1:B:158:GLU:O	1.93	0.68
1:A:658:SER:H	1:A:716:GLN:NE2	1.93	0.67
1:B:235:GLU:OE2	1:B:251:TRP:HB3	1.95	0.67
1:A:652:ILE:HG21	1:A:756:MET:HE2	1.77	0.67
1:B:460:VAL:CG2	1:B:461:SER:H	2.05	0.67
1:A:601:THR:HG22	1:A:602:LEU:N	2.10	0.66
1:A:332:THR:O	1:A:334:VAL:HG23	1.96	0.66
1:A:767:ARG:HD2	1:A:767:ARG:C	2.16	0.66
1:B:473:CYS:O	1:B:479:PRO:HA	1.96	0.65
1:A:54:LYS:H	1:A:498:ASN:HD21	1.43	0.65
1:A:235:GLU:OE2	1:A:251:TRP:HB3	1.97	0.65
1:B:586:TYR:N	1:B:586:TYR:CD1	2.62	0.65
1:B:219:THR:O	1:B:271:THR:HB	1.96	0.65
1:A:381:HIS:CD2	1:A:399:THR:HG22	2.32	0.64
1:A:473:CYS:O	1:A:479:PRO:HA	1.98	0.64
1:A:412:THR:HG22	1:A:414:ASP:N	2.06	0.64
1:B:482:THR:HG22	1:B:494:VAL:HA	1.80	0.64
1:A:146:ILE:HD12	1:A:153:ILE:HD12	1.80	0.63
1:A:121:GLN:O	1:A:125:SER:HB2	1.98	0.63
1:B:462:LEU:N	1:B:462:LEU:HD12	2.13	0.63
1:B:658:SER:H	1:B:716:GLN:NE2	1.97	0.63
1:B:601:THR:HG22	1:B:602:LEU:N	2.12	0.63
1:B:54:LYS:H	1:B:498:ASN:HD21	1.45	0.63
1:B:411:LEU:HD13	1:B:416:LEU:HD13	1.81	0.63
1:B:146:ILE:HD12	1:B:153:ILE:HD12	1.81	0.62
1:A:89:GLU:C	1:A:91:SER:N	2.49	0.62
1:B:72:ASN:O	1:B:90:ASN:HA	2.00	0.62
1:A:219:THR:O	1:A:271:THR:HB	1.98	0.62
1:B:317:ILE:HG22	1:B:319:ASN:HB2	1.82	0.62
1:B:121:GLN:O	1:B:125:SER:HB2	2.00	0.62
1:B:386:GLN:HG3	1:B:390:LYS:CE	2.29	0.62
1:A:130:TYR:HB2	1:A:146:ILE:HD13	1.82	0.62
1:B:89:GLU:C	1:B:91:SER:N	2.50	0.61
1:B:332:THR:O	1:B:334:VAL:HG23	1.99	0.61
1:A:386:GLN:HG3	1:A:390:LYS:CE	2.30	0.61
1:A:79:ALA:O	1:A:80:GLU:CB	2.48	0.61
1:A:462:LEU:N	1:A:462:LEU:HD12	2.16	0.61
1:A:72:ASN:O	1:A:90:ASN:HA	2.01	0.61

Continued on next page...

Continued from previous page...

Atom-1	Atom-2	Interatomic distance (Å)	Clash overlap (Å)
1:A:174:ILE:H	1:A:174:ILE:CD1	2.12	0.61
1:A:151:GLN:NE2	1:A:167:LYS:N	2.48	0.61
1:A:392:GLU:O	1:A:393:GLN:HG3	2.01	0.61
1:A:460:VAL:CG2	1:A:461:SER:H	2.05	0.61
1:A:624:ARG:HB2	1:A:624:ARG:NH1	2.15	0.61
1:B:713:HIS:O	1:B:714:PHE:HB3	2.01	0.61
1:B:358:ALA:O	1:B:371:LYS:HE3	2.01	0.60
1:B:511:PRO:HD3	1:B:570:SER:HB2	1.83	0.60
1:A:317:ILE:HG22	1:A:319:ASN:HB2	1.82	0.60
1:A:713:HIS:O	1:A:714:PHE:HB3	2.00	0.60
1:A:688:THR:HG23	1:A:690:MET:HG2	1.83	0.60
1:B:383:CYS:CB	1:B:397:PHE:HA	2.31	0.60
1:B:151:GLN:NE2	1:B:167:LYS:N	2.50	0.60
1:A:383:CYS:CB	1:A:397:PHE:HA	2.30	0.60
1:B:641:LEU:HD11	1:B:651:GLY:HA3	1.84	0.59
1:A:168:ASN:O	1:A:194:ASN:HB2	2.02	0.59
1:B:217:ASN:HB2	1:B:306:GLU:OE1	2.02	0.59
1:B:415:TYR:HD2	1:B:436:GLN:HA	1.68	0.59
1:A:709:ASP:OD2	1:A:741:HIS:HA	2.03	0.59
1:A:688:THR:CG2	1:A:690:MET:HG2	2.32	0.59
1:A:641:LEU:HD11	1:A:651:GLY:HA3	1.83	0.59
1:B:79:ALA:O	1:B:80:GLU:CB	2.50	0.59
1:B:709:ASP:OD2	1:B:741:HIS:HA	2.03	0.59
1:B:55:SER:HA	1:B:481:TYR:CE1	2.38	0.59
1:B:595:ILE:CG2	1:B:599:LEU:HD23	2.33	0.59
1:A:411:LEU:HD13	1:A:416:LEU:HD13	1.83	0.59
1:A:511:PRO:HD3	1:A:570:SER:HB2	1.82	0.59
1:A:267:PHE:CE2	1:A:284:GLN:HB2	2.38	0.59
1:A:697:LYS:HG2	1:A:729:VAL:HG22	1.85	0.59
1:B:168:ASN:O	1:B:194:ASN:HB2	2.03	0.59
1:A:89:GLU:HB2	1:A:91:SER:HB3	1.84	0.59
1:A:597:LYS:O	1:A:683:HIS:HD2	1.86	0.59
1:A:482:THR:HG22	1:A:494:VAL:HA	1.83	0.59
1:B:339:THR:O	1:B:342:GLU:HB2	2.03	0.59
1:B:454:ARG:HH11	1:B:480:LEU:HB2	1.68	0.58
1:B:267:PHE:CE2	1:B:284:GLN:HB2	2.38	0.58
1:B:688:THR:CG2	1:B:690:MET:HG2	2.33	0.58
1:A:595:ILE:CG2	1:A:599:LEU:HD23	2.33	0.58
1:B:597:LYS:O	1:B:683:HIS:HD2	1.85	0.58
1:B:386:GLN:HG3	1:B:390:LYS:HZ1	1.66	0.58
1:B:403:TRP:CD2	1:B:422:GLU:HB2	2.38	0.58

Continued on next page...

Continued from previous page...

Atom-1	Atom-2	Interatomic distance (Å)	Clash overlap (Å)
1:A:631:SER:OG	3:A:901:AIL:H102	2.03	0.58
1:A:195:GLY:C	1:A:211:ALA:HB3	2.24	0.58
1:A:415:TYR:HD2	1:A:436:GLN:HA	1.68	0.58
1:B:688:THR:HG23	1:B:690:MET:HG2	1.85	0.58
1:B:690:MET:CE	1:B:720:ILE:HA	2.33	0.57
1:A:454:ARG:HH11	1:A:480:LEU:HB2	1.69	0.57
1:B:742:GLY:O	1:B:743:ILE:C	2.43	0.57
1:A:690:MET:CE	1:A:720:ILE:HA	2.34	0.57
1:B:89:GLU:HB2	1:B:91:SER:HB3	1.85	0.57
1:B:195:GLY:C	1:B:211:ALA:HB3	2.24	0.57
1:B:697:LYS:HG2	1:B:729:VAL:HG22	1.87	0.57
1:B:392:GLU:O	1:B:393:GLN:HG3	2.04	0.57
1:B:639:MET:HE3	1:B:689:VAL:HA	1.85	0.57
1:B:624:ARG:NH1	1:B:624:ARG:HB2	2.19	0.57
1:A:323:MET:O	1:A:342:GLU:O	2.23	0.57
1:B:381:HIS:CD2	1:B:399:THR:HG22	2.39	0.56
1:A:506:GLN:OE1	1:A:506:GLN:HA	2.05	0.56
1:B:485:ARG:HB3	1:B:492:LEU:HD21	1.86	0.56
1:B:101:SER:HB3	1:B:115:GLU:HG2	1.87	0.56
1:A:639:MET:HE3	1:A:689:VAL:HA	1.85	0.56
1:A:339:THR:O	1:A:342:GLU:HB2	2.06	0.56
1:A:101:SER:HB3	1:A:115:GLU:HG2	1.86	0.56
1:A:217:ASN:HB2	1:A:306:GLU:OE1	2.05	0.56
1:B:447:SER:HB2	1:B:458:TYR:CE1	2.41	0.56
1:A:403:TRP:CD2	1:A:422:GLU:HB2	2.41	0.56
1:B:767:ARG:C	1:B:767:ARG:CD	2.75	0.55
1:B:412:THR:CG2	1:B:413:SER:N	2.68	0.55
1:B:488:ASP:O	1:B:489:GLN:HB2	2.06	0.55
1:A:412:THR:CG2	1:A:413:SER:N	2.69	0.55
1:A:358:ALA:O	1:A:371:LYS:HE3	2.06	0.55
1:B:256:LYS:HZ1	1:B:713:HIS:HD2	1.53	0.55
1:B:217:ASN:HB2	1:B:306:GLU:CD	2.26	0.55
1:B:543:LEU:HD12	1:B:575:ILE:O	2.07	0.55
1:A:55:SER:HA	1:A:481:TYR:CE1	2.41	0.55
1:B:277:THR:HG22	1:B:278:THR:H	1.72	0.55
1:A:533:PRO:O	1:A:535:PHE:N	2.35	0.55
1:A:455:CYS:HA	1:A:475:GLY:HA3	1.89	0.55
1:A:742:GLY:O	1:A:743:ILE:C	2.45	0.55
1:A:662:TYR:OH	1:A:719:GLN:HG2	2.06	0.54
1:A:650:CYS:HB3	1:A:700:GLU:HB2	1.88	0.54
1:A:256:LYS:HZ1	1:A:713:HIS:HD2	1.55	0.54

Continued on next page...

Continued from previous page...

Atom-1	Atom-2	Interatomic distance (Å)	Clash overlap (Å)
1:B:78:ASN:O	1:B:81:HIS:O	2.25	0.54
1:A:381:HIS:CD2	1:A:399:THR:CG2	2.89	0.54
1:B:455:CYS:HA	1:B:475:GLY:HA3	1.90	0.54
1:A:485:ARG:HB3	1:A:492:LEU:HD21	1.89	0.54
1:B:662:TYR:OH	1:B:719:GLN:HG2	2.08	0.54
1:B:323:MET:O	1:B:342:GLU:O	2.26	0.54
1:B:389:ARG:HH11	1:B:389:ARG:HG2	1.73	0.54
1:A:158:GLU:HG2	1:A:217:ASN:HA	1.91	0.53
1:B:506:GLN:HA	1:B:506:GLN:OE1	2.07	0.53
1:B:767:ARG:HH11	1:B:767:ARG:HG3	1.73	0.53
1:A:447:SER:HB2	1:A:458:TYR:CE1	2.43	0.53
1:B:598:ARG:HE	1:B:601:THR:HG21	1.74	0.53
1:A:234:ILE:O	1:A:234:ILE:HG13	2.09	0.53
1:B:265:LYS:HG2	1:B:284:GLN:HE22	1.72	0.53
1:A:383:CYS:HB2	1:A:396:THR:O	2.08	0.53
1:A:389:ARG:HH11	1:A:389:ARG:HG2	1.73	0.53
1:B:650:CYS:HB3	1:B:700:GLU:HB2	1.91	0.52
1:B:277:THR:HG22	1:B:279:THR:H	1.73	0.52
1:A:439:ASP:OD1	1:A:441:THR:HB	2.10	0.52
1:A:151:GLN:HE21	1:A:167:LYS:H	1.56	0.52
1:A:342:GLU:O	1:A:343:HIS:HB2	2.09	0.52
1:A:228:ASP:OD1	1:A:262:PRO:HB3	2.10	0.52
1:B:688:THR:CG2	1:B:691:SER:H	2.10	0.52
1:A:597:LYS:NZ	1:A:679:ASP:OD1	2.43	0.52
1:B:130:TYR:HB2	1:B:146:ILE:HD13	1.92	0.52
1:A:314:LEU:HD12	1:A:321:SER:HB2	1.92	0.52
1:B:439:ASP:OD1	1:B:441:THR:HB	2.10	0.51
1:A:84:SER:O	1:A:85:SER:CB	2.59	0.51
1:A:70:GLN:HG2	1:A:71:GLU:HG3	1.92	0.51
1:A:543:LEU:HD12	1:A:575:ILE:O	2.11	0.51
1:B:379:TYR:CE2	1:B:402:ALA:HA	2.45	0.51
1:B:277:THR:HG22	1:B:278:THR:N	2.25	0.51
1:A:217:ASN:HB2	1:A:306:GLU:CD	2.30	0.51
1:B:632:TYR:O	1:B:635:TYR:HB3	2.10	0.51
1:A:454:ARG:NH1	1:A:480:LEU:HB2	2.26	0.51
1:B:384:GLN:HG3	1:B:398:ILE:HD11	1.93	0.51
1:A:384:GLN:HG3	1:A:398:ILE:HD11	1.92	0.51
1:B:65:GLU:HB3	1:B:76:LEU:HD11	1.92	0.51
1:B:320:TYR:CE2	1:B:322:VAL:HG23	2.46	0.51
1:A:624:ARG:HG2	1:A:764:PHE:CD2	2.46	0.51
1:B:612:ARG:HG3	1:B:612:ARG:NH1	2.24	0.51

Continued on next page...

Continued from previous page...

Atom-1	Atom-2	Interatomic distance (Å)	Clash overlap (Å)
1:A:752:ILE:O	1:A:756:MET:HG3	2.11	0.51
1:A:529:MET:HE2	1:A:575:ILE:HG21	1.93	0.51
1:B:108:ASP:OD2	1:B:110:LEU:HD12	2.10	0.51
1:A:84:SER:O	1:A:85:SER:HB2	2.11	0.51
1:B:713:HIS:C	1:B:715:GLN:H	2.14	0.51
1:B:158:GLU:HG2	1:B:217:ASN:HA	1.92	0.51
1:B:228:ASP:OD1	1:B:262:PRO:HB3	2.11	0.51
1:B:292:THR:HG22	1:B:292:THR:O	2.11	0.50
1:B:624:ARG:HG2	1:B:764:PHE:CD2	2.45	0.50
1:B:699:VAL:HG12	1:B:700:GLU:N	2.26	0.50
1:A:277:THR:HG22	1:A:279:THR:H	1.75	0.50
1:A:379:TYR:CE2	1:A:402:ALA:HA	2.47	0.50
1:A:320:TYR:CE2	1:A:322:VAL:HG23	2.47	0.50
1:A:518:ILE:HD13	1:A:519:VAL:N	2.24	0.50
1:A:277:THR:HG22	1:A:278:THR:H	1.76	0.50
1:B:84:SER:O	1:B:85:SER:CB	2.60	0.50
1:A:713:HIS:C	1:A:715:GLN:H	2.14	0.50
1:B:415:TYR:CD2	1:B:436:GLN:HA	2.47	0.50
1:B:84:SER:O	1:B:85:SER:HB2	2.11	0.50
1:A:488:ASP:O	1:A:489:GLN:HB2	2.11	0.50
1:A:78:ASN:O	1:A:81:HIS:O	2.30	0.50
1:A:751:HIS:CD2	1:B:725:VAL:HA	2.46	0.50
1:A:346:THR:HG23	1:A:347:SER:N	2.27	0.50
1:B:146:ILE:CD1	1:B:153:ILE:HD12	2.42	0.50
1:B:454:ARG:NH1	1:B:480:LEU:HB2	2.26	0.50
1:A:265:LYS:HG2	1:A:284:GLN:HE22	1.77	0.50
1:B:342:GLU:O	1:B:343:HIS:HB2	2.11	0.50
1:B:597:LYS:O	1:B:683:HIS:CD2	2.64	0.50
1:A:108:ASP:OD2	1:A:110:LEU:HD12	2.11	0.50
1:A:415:TYR:CD2	1:A:436:GLN:HA	2.47	0.50
1:B:412:THR:HG22	1:B:414:ASP:N	2.10	0.49
1:B:383:CYS:HB2	1:B:396:THR:O	2.11	0.49
1:A:598:ARG:HE	1:A:601:THR:HG21	1.76	0.49
1:B:346:THR:HG23	1:B:347:SER:N	2.27	0.49
1:A:292:THR:HG22	1:A:292:THR:O	2.11	0.49
1:A:123:ARG:NH2	2:A:801:SO4:O4	2.45	0.49
1:B:680:ASN:HD21	1:B:683:HIS:CG	2.30	0.49
1:A:699:VAL:HG12	1:A:700:GLU:N	2.27	0.49
1:B:624:ARG:HG2	1:B:764:PHE:HD2	1.77	0.49
1:B:680:ASN:HD21	1:B:683:HIS:CD2	2.30	0.49
1:A:264:VAL:HG12	1:A:265:LYS:H	1.78	0.49

Continued on next page...

Continued from previous page...

Atom-1	Atom-2	Interatomic distance (Å)	Clash overlap (Å)
1:A:614:PHE:O	1:A:617:MET:HB2	2.11	0.49
1:A:767:ARG:HG3	1:A:767:ARG:HH11	1.77	0.49
1:B:423:TYR:CZ	1:B:424:LYS:HE3	2.46	0.49
1:B:524:ARG:HH11	1:B:524:ARG:HG2	1.77	0.49
1:B:381:HIS:CD2	1:B:399:THR:CG2	2.95	0.49
1:A:423:TYR:CZ	1:A:424:LYS:HE3	2.47	0.49
1:B:70:GLN:HG2	1:B:71:GLU:HG3	1.95	0.49
1:A:502:ASP:O	1:A:506:GLN:HG2	2.13	0.49
1:A:386:GLN:HG3	1:A:390:LYS:HE3	1.94	0.49
1:A:624:ARG:HG2	1:A:764:PHE:HD2	1.78	0.49
1:B:752:ILE:O	1:B:756:MET:HG3	2.12	0.49
1:B:767:ARG:OXT	1:B:767:ARG:HD2	2.12	0.49
1:A:65:GLU:HB3	1:A:76:LEU:HD11	1.95	0.49
1:B:767:ARG:CD	1:B:767:ARG:OXT	2.61	0.48
1:B:498:ASN:HB3	1:B:501:LEU:HB3	1.95	0.48
1:A:132:ILE:HG21	1:A:176:PRO:HB3	1.95	0.48
1:B:235:GLU:CG	1:B:251:TRP:HB3	2.42	0.48
1:B:54:LYS:H	1:B:498:ASN:ND2	2.10	0.48
1:A:521:ASN:O	1:A:522:GLU:HB2	2.14	0.48
1:B:41:TYR:HB2	1:B:510:MET:HE1	1.96	0.48
1:B:401:GLY:HA3	1:B:403:TRP:NE1	2.29	0.48
1:B:277:THR:CG2	1:B:279:THR:O	2.61	0.48
1:A:680:ASN:HD21	1:A:683:HIS:CG	2.31	0.48
1:A:612:ARG:NH1	1:A:612:ARG:HG3	2.27	0.48
1:A:632:TYR:O	1:A:635:TYR:HB3	2.13	0.48
1:A:378:GLY:O	1:A:588:GLY:HA2	2.13	0.48
1:A:386:GLN:HG3	1:A:390:LYS:HZ1	1.75	0.48
1:A:529:MET:CE	1:A:575:ILE:HG21	2.42	0.48
1:B:234:ILE:HG13	1:B:234:ILE:O	2.12	0.48
1:A:235:GLU:CG	1:A:251:TRP:HB3	2.43	0.48
1:A:609:GLU:O	1:A:612:ARG:HB2	2.14	0.48
1:A:498:ASN:HB3	1:A:501:LEU:HB3	1.96	0.48
1:B:256:LYS:HZ3	1:B:713:HIS:HD2	1.61	0.48
1:A:91:SER:CA	1:A:94:GLU:OE1	2.59	0.47
1:B:264:VAL:HG12	1:B:265:LYS:H	1.79	0.47
1:A:758:HIS:O	1:A:762:GLN:HG3	2.14	0.47
1:B:132:ILE:HG21	1:B:176:PRO:HB3	1.95	0.47
1:A:690:MET:HE3	1:A:720:ILE:HA	1.96	0.47
1:B:354:ARG:HB3	1:B:552:CYS:SG	2.54	0.47
1:A:109:ARG:O	1:A:135:LEU:HD12	2.14	0.47
1:B:288:PRO:HD2	1:B:313:TRP:CD1	2.50	0.47

Continued on next page...

Continued from previous page...

Atom-1	Atom-2	Interatomic distance (Å)	Clash overlap (Å)
1:A:242:GLU:HG3	1:B:659:ARG:NH1	2.29	0.47
1:A:597:LYS:O	1:A:683:HIS:CD2	2.65	0.47
1:B:597:LYS:NZ	1:B:679:ASP:OD1	2.47	0.47
1:B:54:LYS:HB2	1:B:498:ASN:HD21	1.79	0.47
1:B:659:ARG:HG2	1:B:662:TYR:CE2	2.49	0.47
1:B:93:PHE:O	1:B:100:ILE:HG13	2.13	0.47
1:A:256:LYS:HZ3	1:A:713:HIS:HD2	1.58	0.47
1:A:314:LEU:CD1	1:A:321:SER:HB2	2.45	0.47
1:A:529:MET:HE2	1:A:575:ILE:CG2	2.45	0.47
1:B:105:VAL:HG22	1:B:112:VAL:HG22	1.96	0.47
1:A:524:ARG:HG2	1:A:524:ARG:HH11	1.79	0.47
1:B:690:MET:HE2	1:B:719:GLN:O	2.14	0.47
1:B:409:GLU:HG3	1:B:460:VAL:HG11	1.97	0.47
1:A:174:ILE:HD12	1:A:174:ILE:N	2.15	0.47
1:B:91:SER:OG	1:B:92:THR:N	2.47	0.47
1:A:277:THR:HG22	1:A:278:THR:N	2.30	0.47
1:A:277:THR:CG2	1:A:279:THR:O	2.60	0.47
1:B:166:TRP:O	1:B:167:LYS:HB2	2.15	0.47
1:A:680:ASN:HD21	1:A:683:HIS:CD2	2.33	0.47
1:B:508:VAL:HG12	1:B:510:MET:HE2	1.97	0.47
1:A:288:PRO:HD2	1:A:313:TRP:CD1	2.50	0.47
1:A:166:TRP:O	1:A:167:LYS:HB2	2.14	0.47
1:B:386:GLN:HG3	1:B:390:LYS:HE3	1.95	0.47
1:B:158:GLU:OE2	1:B:217:ASN:N	2.48	0.47
1:A:41:TYR:HB2	1:A:510:MET:CE	2.45	0.47
1:A:354:ARG:HB3	1:A:552:CYS:SG	2.55	0.47
1:B:100:ILE:HG22	1:B:100:ILE:O	2.15	0.47
1:A:93:PHE:O	1:A:100:ILE:HG13	2.15	0.47
1:B:151:GLN:HE21	1:B:167:LYS:H	1.58	0.47
1:B:533:PRO:O	1:B:535:PHE:N	2.38	0.47
1:B:529:MET:CE	1:B:575:ILE:HG21	2.45	0.47
1:B:552:CYS:HB2	1:B:592:MET:SD	2.55	0.47
1:B:314:LEU:HD12	1:B:321:SER:HB2	1.96	0.47
1:B:87:PHE:CZ	1:B:135:LEU:HD11	2.50	0.47
1:A:158:GLU:OE2	1:A:217:ASN:N	2.48	0.46
1:B:41:TYR:HB2	1:B:510:MET:CE	2.45	0.46
1:A:536:ASP:HB3	1:A:539:LYS:NZ	2.30	0.46
1:A:713:HIS:O	1:A:714:PHE:CB	2.61	0.46
1:B:67:LEU:HD22	1:B:74:ILE:HG22	1.97	0.46
1:A:721:SER:O	1:A:725:VAL:HG23	2.15	0.46
1:A:737:THR:HB	1:B:722:LYS:HB2	1.97	0.46

Continued on next page...

Continued from previous page...

Atom-1	Atom-2	Interatomic distance (Å)	Clash overlap (Å)
1:B:378:GLY:O	1:B:588:GLY:HA2	2.15	0.46
1:B:297:TYR:CE2	1:B:666:VAL:HG22	2.51	0.46
1:B:355:PHE:O	1:B:670:ARG:NH1	2.49	0.46
1:B:75:LEU:HB2	1:B:77:PHE:CE1	2.51	0.46
1:B:767:ARG:HG3	1:B:767:ARG:NH1	2.31	0.46
1:B:447:SER:HA	1:B:450:LEU:CD1	2.46	0.46
1:A:383:CYS:HB2	1:A:396:THR:C	2.36	0.46
1:B:713:HIS:O	1:B:714:PHE:CB	2.62	0.46
1:A:312:GLN:HG2	1:A:323:MET:HG3	1.98	0.46
1:B:529:MET:HE2	1:B:575:ILE:CG2	2.46	0.46
1:A:747:THR:HG21	1:B:726:ASP:HA	1.98	0.46
1:B:690:MET:HE3	1:B:720:ILE:HA	1.96	0.46
1:A:54:LYS:H	1:A:498:ASN:ND2	2.11	0.46
1:A:146:ILE:CD1	1:A:153:ILE:HD12	2.45	0.46
1:A:386:GLN:O	1:A:387:LYS:C	2.54	0.45
1:A:346:THR:CG2	1:A:347:SER:N	2.79	0.45
1:A:289:ALA:C	1:A:291:VAL:H	2.19	0.45
1:A:129:SER:HB3	1:A:148:ASN:ND2	2.31	0.45
1:A:151:GLN:HE22	1:A:167:LYS:N	2.12	0.45
1:A:355:PHE:O	1:A:670:ARG:NH1	2.50	0.45
1:A:41:TYR:HB2	1:A:510:MET:HE2	1.98	0.45
1:B:182:ARG:HH21	1:B:185:SER:HA	1.80	0.45
1:B:408:ILE:HG23	1:B:416:LEU:HD11	1.99	0.45
1:B:502:ASP:O	1:B:506:GLN:HG2	2.17	0.45
1:A:330:LYS:O	1:A:333:LEU:HD23	2.17	0.45
1:B:109:ARG:O	1:B:135:LEU:HD12	2.16	0.45
1:B:456:GLN:OE1	1:B:476:PRO:HG2	2.16	0.45
1:A:87:PHE:CZ	1:A:135:LEU:HD11	2.51	0.45
1:A:297:TYR:CE2	1:A:666:VAL:HG22	2.52	0.45
1:B:758:HIS:O	1:B:762:GLN:HG3	2.16	0.45
1:A:690:MET:HE2	1:A:719:GLN:O	2.16	0.45
1:A:100:ILE:HG22	1:A:100:ILE:O	2.16	0.45
1:B:614:PHE:O	1:B:617:MET:HB2	2.17	0.45
1:B:289:ALA:C	1:B:291:VAL:H	2.20	0.45
1:A:659:ARG:HG2	1:A:662:TYR:CE2	2.52	0.45
1:B:93:PHE:CD2	1:B:100:ILE:HG21	2.52	0.45
1:B:75:LEU:HB2	1:B:77:PHE:HE1	1.81	0.45
1:A:80:GLU:H	1:A:493:ARG:HH22	1.64	0.45
1:B:235:GLU:HG2	1:B:251:TRP:CB	2.44	0.45
1:B:306:GLU:O	1:B:306:GLU:CG	2.65	0.45
1:B:386:GLN:O	1:B:387:LYS:C	2.55	0.45

Continued on next page...

Continued from previous page...

Atom-1	Atom-2	Interatomic distance (Å)	Clash overlap (Å)
1:A:598:ARG:HD3	1:A:598:ARG:O	2.17	0.45
1:A:297:TYR:CE1	1:A:316:ARG:HA	2.52	0.45
1:B:525:PHE:HB3	1:B:579:PHE:CZ	2.52	0.45
1:A:182:ARG:HH21	1:A:185:SER:HA	1.80	0.45
1:B:518:ILE:HD13	1:B:519:VAL:N	2.27	0.44
1:B:312:GLN:HG2	1:B:323:MET:HG3	1.99	0.44
1:B:364:SER:C	1:B:366:GLY:H	2.20	0.44
1:A:246:TYR:CZ	1:B:232:PRO:HB2	2.52	0.44
1:A:409:GLU:HG3	1:A:460:VAL:HG11	1.99	0.44
1:B:447:SER:HA	1:B:450:LEU:HD12	2.00	0.44
1:A:299:CYS:SG	1:A:357:PRO:HD2	2.56	0.44
1:A:688:THR:CG2	1:A:691:SER:H	2.12	0.44
1:A:234:ILE:HG21	1:A:713:HIS:NE2	2.33	0.44
1:A:370:TYR:CE2	1:A:384:GLN:CG	3.00	0.44
1:A:473:CYS:HB3	1:A:480:LEU:O	2.18	0.44
1:A:583:GLY:HA2	1:A:592:MET:O	2.16	0.44
1:A:93:PHE:CD2	1:A:100:ILE:HG21	2.52	0.44
1:A:306:GLU:CG	1:A:306:GLU:O	2.64	0.44
1:B:509:GLN:O	1:B:533:PRO:HG3	2.18	0.44
1:A:235:GLU:HG2	1:A:251:TRP:CB	2.45	0.44
1:B:146:ILE:HG13	1:B:147:PRO:HD2	1.99	0.44
1:A:317:ILE:C	1:A:319:ASN:H	2.20	0.44
1:A:447:SER:HA	1:A:450:LEU:CD1	2.48	0.44
1:A:390:LYS:H	1:A:394:VAL:HG13	1.83	0.44
1:B:91:SER:CA	1:B:94:GLU:OE1	2.57	0.44
1:B:346:THR:CG2	1:B:347:SER:N	2.79	0.44
1:B:299:CYS:SG	1:B:357:PRO:HD2	2.56	0.44
1:B:482:THR:HG22	1:B:494:VAL:HG22	1.99	0.44
1:A:120:LYS:CG	1:A:121:GLN:N	2.80	0.44
1:B:317:ILE:C	1:B:319:ASN:H	2.21	0.44
1:A:508:VAL:HG12	1:A:510:MET:HE3	1.99	0.44
1:A:615:LEU:HD23	1:A:620:VAL:CG1	2.48	0.44
1:B:529:MET:HE2	1:B:575:ILE:HG21	1.98	0.44
1:A:299:CYS:SG	1:A:314:LEU:HB2	2.57	0.44
1:A:116:TYR:O	1:A:117:ASN:HB2	2.18	0.44
1:B:383:CYS:HB2	1:B:396:THR:C	2.39	0.43
1:B:609:GLU:O	1:B:612:ARG:HB2	2.17	0.43
1:A:105:VAL:HG22	1:A:112:VAL:HG22	2.00	0.43
1:B:42:THR:O	1:B:45:ASP:HB2	2.17	0.43
1:B:647:VAL:O	1:B:647:VAL:HG12	2.17	0.43
1:B:598:ARG:NE	1:B:601:THR:HG21	2.33	0.43

Continued on next page...

Continued from previous page...

Atom-1	Atom-2	Interatomic distance (Å)	Clash overlap (Å)
1:B:120:LYS:CG	1:B:121:GLN:N	2.80	0.43
1:A:509:GLN:O	1:A:533:PRO:HG3	2.17	0.43
1:B:95:ILE:C	1:B:97:GLY:H	2.21	0.43
1:B:390:LYS:H	1:B:394:VAL:HG13	1.82	0.43
1:B:334:VAL:HG12	1:B:335:TRP:N	2.34	0.43
1:B:521:ASN:O	1:B:522:GLU:HB2	2.19	0.43
1:A:61:VAL:HG21	1:A:67:LEU:HG	2.01	0.43
1:A:525:PHE:HB3	1:A:579:PHE:CZ	2.53	0.43
1:B:399:THR:CG2	1:B:403:TRP:CH2	3.02	0.43
1:B:216:PRO:O	1:B:217:ASN:HB2	2.18	0.43
1:B:721:SER:O	1:B:725:VAL:HG23	2.18	0.43
1:B:61:VAL:HG21	1:B:67:LEU:HG	2.00	0.43
1:B:618:GLY:O	1:B:620:VAL:N	2.45	0.43
1:B:116:TYR:O	1:B:117:ASN:HB2	2.17	0.43
1:B:419:ILE:HD11	1:B:460:VAL:HG12	2.01	0.43
1:A:125:SER:O	1:A:126:TYR:HB3	2.18	0.43
1:B:330:LYS:O	1:B:333:LEU:HD23	2.19	0.43
1:B:639:MET:HE3	1:B:689:VAL:CA	2.48	0.43
1:A:42:THR:O	1:A:45:ASP:HB2	2.19	0.43
1:A:767:ARG:HG3	1:A:767:ARG:NH1	2.34	0.43
1:A:91:SER:OG	1:A:92:THR:N	2.50	0.43
1:A:148:ASN:HD22	1:A:148:ASN:HA	1.60	0.43
1:B:89:GLU:C	1:B:91:SER:H	2.22	0.43
1:B:125:SER:O	1:B:126:TYR:HB3	2.18	0.43
1:A:552:CYS:HB2	1:A:592:MET:SD	2.59	0.43
1:B:174:ILE:H	1:B:174:ILE:CD1	2.11	0.43
1:A:601:THR:HG22	1:A:602:LEU:H	1.84	0.43
1:A:53:VAL:CG1	1:A:479:PRO:HG3	2.48	0.43
1:A:67:LEU:HD22	1:A:74:ILE:HG22	2.01	0.43
1:A:401:GLY:HA3	1:A:403:TRP:NE1	2.34	0.42
1:A:598:ARG:NE	1:A:601:THR:HG21	2.34	0.42
1:B:297:TYR:CE1	1:B:316:ARG:HA	2.53	0.42
1:A:370:TYR:CE2	1:A:384:GLN:HG2	2.54	0.42
1:B:41:TYR:CD2	1:B:566:THR:HG22	2.54	0.42
1:A:456:GLN:OE1	1:A:476:PRO:HG2	2.18	0.42
1:A:95:ILE:C	1:A:97:GLY:H	2.22	0.42
1:B:460:VAL:CG2	1:B:461:SER:N	2.70	0.42
1:B:314:LEU:CD1	1:B:321:SER:HB2	2.50	0.42
1:A:88:LEU:HD23	1:A:88:LEU:HA	1.93	0.42
1:A:75:LEU:HB2	1:A:77:PHE:HE1	1.85	0.42
1:A:233:LEU:HD23	1:A:253:PRO:HA	2.02	0.42

Continued on next page...

Continued from previous page...

Atom-1	Atom-2	Interatomic distance (Å)	Clash overlap (Å)
1:B:598:ARG:HD3	1:B:598:ARG:O	2.18	0.42
1:B:568:LEU:O	1:B:572:GLU:HB2	2.19	0.42
1:A:173:LYS:HE3	1:A:173:LYS:HB3	1.78	0.42
1:A:647:VAL:HG12	1:A:647:VAL:O	2.19	0.42
1:A:767:ARG:OXT	1:A:767:ARG:HD2	2.18	0.42
1:A:354:ARG:HD3	1:A:552:CYS:SG	2.59	0.42
1:A:334:VAL:HG12	1:A:335:TRP:N	2.33	0.42
1:B:306:GLU:O	1:B:306:GLU:HG2	2.20	0.42
1:A:54:LYS:HB2	1:A:498:ASN:HD21	1.84	0.42
1:A:165:VAL:HG21	1:A:196:ILE:HG23	2.00	0.42
1:A:398:ILE:O	1:A:398:ILE:HG22	2.18	0.42
1:A:364:SER:C	1:A:366:GLY:H	2.23	0.42
1:B:215:SER:HB3	1:B:303:TRP:CZ2	2.55	0.42
1:A:147:PRO:HB2	1:A:166:TRP:CD1	2.55	0.42
1:A:306:GLU:HG2	1:A:306:GLU:O	2.20	0.42
1:B:53:VAL:CG1	1:B:479:PRO:HG3	2.49	0.42
1:A:120:LYS:HG2	1:A:121:GLN:N	2.35	0.42
1:B:299:CYS:SG	1:B:314:LEU:HB2	2.60	0.42
1:A:175:GLU:OE2	1:A:177:HIS:CD2	2.72	0.42
1:B:121:GLN:O	1:B:122:TRP:HB2	2.19	0.42
1:B:532:PRO:O	1:B:533:PRO:O	2.37	0.42
1:B:441:THR:O	1:B:443:LYS:N	2.42	0.42
1:B:659:ARG:HG2	1:B:662:TYR:CD2	2.55	0.41
1:B:690:MET:HE2	1:B:719:GLN:C	2.40	0.41
1:B:485:ARG:HD2	1:B:487:THR:HB	2.02	0.41
1:A:121:GLN:O	1:A:122:TRP:HB2	2.20	0.41
1:B:108:ASP:O	1:B:110:LEU:HG	2.20	0.41
1:B:437:LEU:O	1:B:440:HIS:CE1	2.73	0.41
1:B:536:ASP:HB3	1:B:539:LYS:NZ	2.35	0.41
1:B:571:THR:O	1:B:571:THR:HG22	2.20	0.41
1:B:129:SER:HB3	1:B:148:ASN:ND2	2.35	0.41
1:A:408:ILE:HG23	1:A:416:LEU:HD11	2.01	0.41
1:A:267:PHE:CD2	1:A:284:GLN:HB2	2.55	0.41
1:B:583:GLY:HA2	1:B:592:MET:O	2.20	0.41
1:A:533:PRO:CD	1:A:570:SER:HA	2.51	0.41
1:B:398:ILE:HG22	1:B:398:ILE:O	2.20	0.41
1:A:61:VAL:CG2	1:A:67:LEU:HG	2.50	0.41
1:A:75:LEU:HB2	1:A:77:PHE:CE1	2.55	0.41
1:B:234:ILE:HG21	1:B:713:HIS:NE2	2.36	0.41
1:B:147:PRO:HG3	1:B:164:TYR:CE1	2.56	0.41
1:B:61:VAL:CG2	1:B:67:LEU:HG	2.50	0.41

Continued on next page...

Continued from previous page...

Atom-1	Atom-2	Interatomic distance (Å)	Clash overlap (Å)
1:B:165:VAL:HG21	1:B:196:ILE:HG23	2.03	0.41
1:A:690:MET:HE2	1:A:719:GLN:C	2.41	0.41
1:A:89:GLU:C	1:A:91:SER:H	2.21	0.41
1:B:161:LYS:NZ	1:B:271:THR:HG21	2.36	0.41
1:B:267:PHE:CD2	1:B:284:GLN:HB2	2.55	0.41
1:B:699:VAL:CG1	1:B:700:GLU:N	2.84	0.41
1:B:151:GLN:HE22	1:B:167:LYS:N	2.16	0.41
1:A:612:ARG:O	1:A:615:LEU:HB2	2.21	0.41
1:B:482:THR:OG1	1:B:484:HIS:HE1	2.04	0.41
1:B:205:ILE:CD1	1:B:666:VAL:HG11	2.51	0.41
1:B:615:LEU:HD23	1:B:620:VAL:CG1	2.50	0.41
1:B:175:GLU:HB3	1:B:178:LEU:HD12	2.02	0.41
1:A:375:ASP:HA	1:A:397:PHE:CZ	2.56	0.41
1:A:639:MET:HE3	1:A:689:VAL:CA	2.48	0.41
1:B:120:LYS:HG2	1:B:121:GLN:N	2.35	0.41
1:A:447:SER:HA	1:A:450:LEU:HD12	2.03	0.41
1:B:354:ARG:HD3	1:B:552:CYS:SG	2.61	0.41
1:A:517:PHE:CZ	1:A:524:ARG:NH1	2.89	0.41
1:A:359:GLU:HG3	1:A:360:PRO:HD2	2.03	0.41
1:B:766:LEU:O	1:B:767:ARG:O	2.38	0.41
1:B:449:ASP:O	1:B:450:LEU:C	2.59	0.41
1:A:256:LYS:HZ3	1:A:713:HIS:CD2	2.38	0.41
1:B:82:GLY:O	1:B:83:ASN:C	2.58	0.41
1:B:70:GLN:O	1:B:73:ASN:HB2	2.21	0.41
1:B:533:PRO:CD	1:B:570:SER:HA	2.51	0.41
1:A:623:LYS:HA	1:A:623:LYS:HD3	1.88	0.41
1:B:233:LEU:HD23	1:B:253:PRO:HA	2.02	0.41
1:B:63:ASP:CG	1:B:465:GLU:HB2	2.41	0.41
1:B:690:MET:HE3	1:B:720:ILE:HG12	2.03	0.41
1:A:349:THR:HG22	1:A:593:HIS:HB3	2.03	0.41
1:A:583:GLY:HA3	1:A:595:ILE:HD12	2.03	0.41
1:A:82:GLY:O	1:A:83:ASN:C	2.59	0.41
1:A:658:SER:H	1:A:716:GLN:HE21	1.68	0.41
1:B:462:LEU:H	1:B:462:LEU:HD12	1.84	0.41
1:B:514:LYS:HE3	1:B:531:LEU:HD11	2.03	0.41
1:B:714:PHE:C	1:B:716:GLN:N	2.73	0.40
1:B:73:ASN:OD1	1:B:90:ASN:N	2.53	0.40
1:A:147:PRO:HG3	1:A:164:TYR:CE1	2.57	0.40
1:A:482:THR:HG22	1:A:494:VAL:HG22	2.03	0.40
1:B:205:ILE:HG21	1:B:298:LEU:O	2.22	0.40
1:A:216:PRO:O	1:A:217:ASN:HB2	2.21	0.40

Continued on next page...

Continued from previous page...

Atom-1	Atom-2	Interatomic distance (Å)	Clash overlap (Å)
1:B:147:PRO:HB2	1:B:166:TRP:CD1	2.57	0.40
1:B:473:CYS:HB3	1:B:480:LEU:O	2.21	0.40
1:B:370:TYR:CE2	1:B:384:GLN:CG	3.04	0.40
1:B:231:VAL:HA	1:B:232:PRO:HD3	1.89	0.40
1:B:175:GLU:OE2	1:B:177:HIS:CD2	2.75	0.40
1:A:430:ARG:HA	1:A:430:ARG:HD3	1.92	0.40
1:B:412:THR:HG22	1:B:413:SER:N	2.35	0.40
1:A:751:HIS:HD2	1:B:725:VAL:HA	1.86	0.40
1:B:88:LEU:HD23	1:B:88:LEU:HA	1.94	0.40
1:B:60:TRP:CE3	1:B:66:TYR:HB3	2.57	0.40
1:B:359:GLU:HG3	1:B:360:PRO:HD2	2.04	0.40

There are no symmetry-related clashes.

5.3 Torsion angles [i](#)

5.3.1 Protein backbone [i](#)

In the following table, the Percentiles column shows the percent Ramachandran outliers of the chain as a percentile score with respect to all X-ray entries followed by that with respect to entries of similar resolution.

The Analysed column shows the number of residues for which the backbone conformation was analysed, and the total number of residues.

Mol	Chain	Analysed	Favoured	Allowed	Outliers	Percentiles	
1	A	728/730 (100%)	624 (86%)	78 (11%)	26 (4%)	4	24
1	B	728/730 (100%)	628 (86%)	74 (10%)	26 (4%)	4	24
All	All	1456/1460 (100%)	1252 (86%)	152 (10%)	52 (4%)	4	24

All (52) Ramachandran outliers are listed below:

Mol	Chain	Res	Type
1	A	80	GLU
1	A	85	SER
1	A	91	SER
1	A	92	THR
1	A	143	GLU
1	A	450	LEU
1	A	461	SER

Continued on next page...

Continued from previous page...

Mol	Chain	Res	Type
1	A	533	PRO
1	A	585	GLY
1	A	619	PHE
1	A	713	HIS
1	B	80	GLU
1	B	85	SER
1	B	91	SER
1	B	92	THR
1	B	450	LEU
1	B	461	SER
1	B	475	GLY
1	B	533	PRO
1	B	585	GLY
1	B	619	PHE
1	B	713	HIS
1	A	318	GLN
1	A	393	GLN
1	A	475	GLY
1	A	521	ASN
1	A	534	HIS
1	B	143	GLU
1	B	318	GLN
1	B	393	GLN
1	B	534	HIS
1	A	147	PRO
1	A	391	PRO
1	A	537	LYS
1	B	93	PHE
1	B	147	PRO
1	B	391	PRO
1	B	521	ASN
1	B	537	LYS
1	A	83	ASN
1	A	93	PHE
1	A	274	LEU
1	A	766	LEU
1	B	274	LEU
1	B	766	LEU
1	A	290	SER
1	B	83	ASN
1	B	442	ASN
1	A	476	PRO

Continued on next page...

Continued from previous page...

Mol	Chain	Res	Type
1	B	350	GLY
1	A	350	GLY
1	B	476	PRO

5.3.2 Protein sidechains ⓘ

In the following table, the Percentiles column shows the percent sidechain outliers of the chain as a percentile score with respect to all X-ray entries followed by that with respect to entries of similar resolution.

The Analysed column shows the number of residues for which the sidechain conformation was analysed, and the total number of residues.

Mol	Chain	Analysed	Rotameric	Outliers	Percentiles	
1	A	643/651 (99%)	598 (93%)	45 (7%)	19	55
1	B	643/651 (99%)	597 (93%)	46 (7%)	18	53
All	All	1286/1302 (99%)	1195 (93%)	91 (7%)	18	54

All (91) residues with a non-rotameric sidechain are listed below:

Mol	Chain	Res	Type
1	A	52	ARG
1	A	58	LEU
1	A	92	THR
1	A	94	GLU
1	A	125	SER
1	A	139	GLN
1	A	146	ILE
1	A	148	ASN
1	A	160	HIS
1	A	175	GLU
1	A	264	VAL
1	A	283	MET
1	A	300	ASP
1	A	319	ASN
1	A	340	THR
1	A	342	GLU
1	A	346	THR
1	A	368	SER
1	A	393	GLN
1	A	394	VAL

Continued on next page...

Continued from previous page...

Mol	Chain	Res	Type
1	A	395	CYS
1	A	414	ASP
1	A	453	GLU
1	A	459	SER
1	A	470	GLN
1	A	483	LEU
1	A	485	ARG
1	A	516	ASP
1	A	518	ILE
1	A	533	PRO
1	A	547	VAL
1	A	586	TYR
1	A	593	HIS
1	A	598	ARG
1	A	609	GLU
1	A	624	ARG
1	A	664	ASP
1	A	680	ASN
1	A	686	ASN
1	A	688	THR
1	A	690	MET
1	A	707	THR
1	A	715	GLN
1	A	716	GLN
1	A	767	ARG
1	B	52	ARG
1	B	58	LEU
1	B	92	THR
1	B	94	GLU
1	B	125	SER
1	B	139	GLN
1	B	146	ILE
1	B	148	ASN
1	B	160	HIS
1	B	175	GLU
1	B	264	VAL
1	B	283	MET
1	B	300	ASP
1	B	319	ASN
1	B	340	THR
1	B	342	GLU
1	B	346	THR

Continued on next page...

Continued from previous page...

Mol	Chain	Res	Type
1	B	349	THR
1	B	368	SER
1	B	393	GLN
1	B	394	VAL
1	B	395	CYS
1	B	414	ASP
1	B	453	GLU
1	B	459	SER
1	B	470	GLN
1	B	483	LEU
1	B	485	ARG
1	B	516	ASP
1	B	518	ILE
1	B	533	PRO
1	B	547	VAL
1	B	586	TYR
1	B	593	HIS
1	B	598	ARG
1	B	609	GLU
1	B	624	ARG
1	B	664	ASP
1	B	680	ASN
1	B	686	ASN
1	B	688	THR
1	B	690	MET
1	B	707	THR
1	B	715	GLN
1	B	716	GLN
1	B	767	ARG

Some sidechains can be flipped to improve hydrogen bonding and reduce clashes. All (46) such sidechains are listed below:

Mol	Chain	Res	Type
1	A	90	ASN
1	A	148	ASN
1	A	151	GLN
1	A	217	ASN
1	A	284	GLN
1	A	319	ASN
1	A	336	ASN
1	A	341	GLN
1	A	381	HIS

Continued on next page...

Continued from previous page...

Mol	Chain	Res	Type
1	A	384	GLN
1	A	440	HIS
1	A	470	GLN
1	A	484	HIS
1	A	498	ASN
1	A	593	HIS
1	A	680	ASN
1	A	683	HIS
1	A	698	GLN
1	A	713	HIS
1	A	715	GLN
1	A	716	GLN
1	A	719	GLN
1	A	749	HIS
1	B	90	ASN
1	B	148	ASN
1	B	151	GLN
1	B	217	ASN
1	B	284	GLN
1	B	319	ASN
1	B	336	ASN
1	B	341	GLN
1	B	381	HIS
1	B	384	GLN
1	B	440	HIS
1	B	470	GLN
1	B	484	HIS
1	B	498	ASN
1	B	593	HIS
1	B	680	ASN
1	B	683	HIS
1	B	698	GLN
1	B	713	HIS
1	B	715	GLN
1	B	716	GLN
1	B	719	GLN
1	B	749	HIS

5.3.3 RNA ⓘ

There are no RNA molecules in this entry.

5.4 Non-standard residues in protein, DNA, RNA chains [i](#)

There are no non-standard protein/DNA/RNA residues in this entry.

5.5 Carbohydrates [i](#)

There are no carbohydrates in this entry.

5.6 Ligand geometry [i](#)

2 ligands are modelled in this entry.

In the following table, the Counts columns list the number of bonds (or angles) for which Mogul statistics could be retrieved, the number of bonds (or angles) that are observed in the model and the number of bonds (or angles) that are defined in the chemical component dictionary. The Link column lists molecule types, if any, to which the group is linked. The Z score for a bond length (or angle) is the number of standard deviations the observed value is removed from the expected value. A bond length (or angle) with $|Z| > 2$ is considered an outlier worth inspection. RMSZ is the root-mean-square of all Z scores of the bond lengths (or angles).

Mol	Type	Chain	Res	Link	Bond lengths			Bond angles		
					Counts	RMSZ	$\# Z > 2$	Counts	RMSZ	$\# Z > 2$
2	SO4	A	801	-	4,4,4	0.88	0	6,6,6	0.44	0
3	AIL	A	901	-	19,23,23	1.28	1 (5%)	20,31,31	1.55	3 (15%)

In the following table, the Chirals column lists the number of chiral outliers, the number of chiral centers analysed, the number of these observed in the model and the number defined in the chemical component dictionary. Similar counts are reported in the Torsion and Rings columns. '-' means no outliers of that kind were identified.

Mol	Type	Chain	Res	Link	Chirals	Torsions	Rings
2	SO4	A	801	-	-	0/0/0/0	0/0/0/0
3	AIL	A	901	-	-	0/13/33/33	0/3/3/3

All (1) bond length outliers are listed below:

Mol	Chain	Res	Type	Atoms	Z	Observed(Å)	Ideal(Å)
3	A	901	AIL	C21-C15	-4.28	1.40	1.50

All (3) bond angle outliers are listed below:

Mol	Chain	Res	Type	Atoms	Z	Observed(°)	Ideal(°)
3	A	901	AIL	C7-C3-N2	-3.78	104.77	111.73

Continued on next page...

Continued from previous page...

Mol	Chain	Res	Type	Atoms	Z	Observed(°)	Ideal(°)
3	A	901	AIL	C5-C6-N14	-2.74	107.61	112.83
3	A	901	AIL	C4-C3-C7	2.94	115.99	111.08

There are no chirality outliers.

There are no torsion outliers.

There are no ring outliers.

2 monomers are involved in 2 short contacts:

Mol	Chain	Res	Type	Clashes	Symm-Clashes
2	A	801	SO4	1	0
3	A	901	AIL	1	0

5.7 Other polymers [i](#)

There are no such residues in this entry.

5.8 Polymer linkage issues [i](#)

There are no chain breaks in this entry.

6 Fit of model and data [i](#)

6.1 Protein, DNA and RNA chains [i](#)

In the following table, the column labelled ‘#RSRZ> 2’ contains the number (and percentage) of RSRZ outliers, followed by percent RSRZ outliers for the chain as percentile scores relative to all X-ray entries and entries of similar resolution. The OWAB column contains the minimum, median, 95th percentile and maximum values of the occupancy-weighted average B-factor per residue. The column labelled ‘Q< 0.9’ lists the number of (and percentage) of residues with an average occupancy less than 0.9.

Mol	Chain	Analysed	<RSRZ>	#RSRZ>2	OWAB(Å ²)	Q<0.9
1	A	730/730 (100%)	-0.44	4 (0%) 91 76	22, 42, 73, 144	0
1	B	730/730 (100%)	-0.34	3 (0%) 93 80	25, 49, 84, 151	0
All	All	1460/1460 (100%)	-0.39	7 (0%) 91 76	22, 46, 80, 151	0

All (7) RSRZ outliers are listed below:

Mol	Chain	Res	Type	RSRZ
1	A	767	ARG	6.9
1	B	392	GLU	3.8
1	B	393	GLN	3.5
1	A	392	GLU	2.4
1	A	393	GLN	2.4
1	A	98	ASP	2.2
1	B	438	THR	2.0

6.2 Non-standard residues in protein, DNA, RNA chains [i](#)

There are no non-standard protein/DNA/RNA residues in this entry.

6.3 Carbohydrates [i](#)

There are no carbohydrates in this entry.

6.4 Ligands [i](#)

In the following table, the Atoms column lists the number of modelled atoms in the group and the number defined in the chemical component dictionary. LLDF column lists the quality of electron density of the group with respect to its neighbouring residues in protein, DNA or RNA chains. The B-factors column lists the minimum, median, 95th percentile and maximum values of B factors

of atoms in the group. The column labelled 'Q< 0.9' lists the number of atoms with occupancy less than 0.9.

Mol	Type	Chain	Res	Atoms	RSCC	RSR	LLDF	B-factors(\AA^2)	Q<0.9
2	SO4	A	801	5/5	0.90	0.31	3.78	47,47,47,47	0
3	AIL	A	901	21/21	0.92	0.21	1.54	47,47,47,47	0

6.5 Other polymers [i](#)

There are no such residues in this entry.