



wwPDB X-ray Structure Validation Summary Report ⓘ

Jan 31, 2016 – 09:19 PM GMT

PDB ID : 1OG5
Title : STRUCTURE OF HUMAN CYTOCHROME P450 CYP2C9
Authors : Williams, P.A.; Cosme, J.; Ward, A.; Angove, H.C.; Matak Vinkovic, D.; Jhoti, H.
Deposited on : 2003-04-24
Resolution : 2.55 Å(reported)

This is a wwPDB X-ray Structure Validation Summary Report for a publicly released PDB entry.
We welcome your comments at validation@mail.wwpdb.org
A user guide is available at
<http://wwpdb.org/validation/2016/XrayValidationReportHelp>
with specific help available everywhere you see the ⓘ symbol.

The following versions of software and data (see [references ⓘ](#)) were used in the production of this report:

MolProbity : 4.02b-467
Mogul : 1.7 (RC4), CSD as536be (2015)
Xtriage (Phenix) : **NOT EXECUTED**
EDS : **NOT EXECUTED**
Percentile statistics : 20151230.v01 (using entries in the PDB archive December 30th 2015)
Ideal geometry (proteins) : Engh & Huber (2001)
Ideal geometry (DNA, RNA) : Parkinson et al. (1996)
Validation Pipeline (wwPDB-VP) : trunk26865

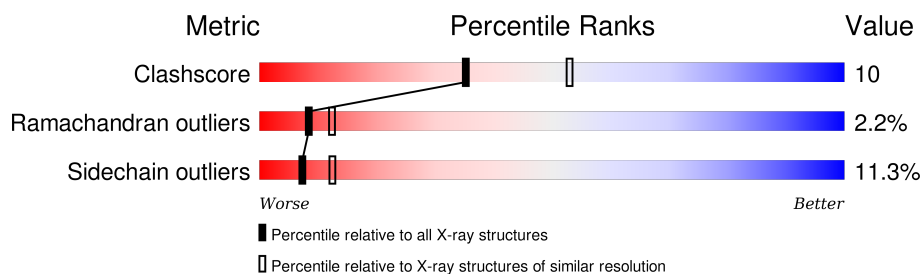
1 Overall quality at a glance

The following experimental techniques were used to determine the structure:

X-RAY DIFFRACTION

The reported resolution of this entry is 2.55 Å.

Percentile scores (ranging between 0-100) for global validation metrics of the entry are shown in the following graphic. The table shows the number of entries on which the scores are based.



Metric	Whole archive (#Entries)	Similar resolution (#Entries, resolution range(Å))
Clashscore	102246	5292 (2.58-2.50)
Ramachandran outliers	100387	5194 (2.58-2.50)
Sidechain outliers	100360	5196 (2.58-2.50)

The table below summarises the geometric issues observed across the polymeric chains and their fit to the electron density. The red, orange, yellow and green segments on the lower bar indicate the fraction of residues that contain outliers for ≥ 3 , 2, 1 and 0 types of geometric quality criteria. A grey segment represents the fraction of residues that are not modelled. The numeric value for each fraction is indicated below the corresponding segment, with a dot representing fractions $\leq 5\%$. The upper red bar (where present) indicates the fraction of residues that have poor fit to the electron density. The numeric value is given above the bar.

Note EDS was not executed.

Mol	Chain	Length	Quality of chain
1	A	475	 71% 21% . . .
1	B	475	 70% 23% . . .

2 Entry composition

There are 4 unique types of molecules in this entry. The entry contains 7939 atoms, of which 0 are hydrogens and 0 are deuteriums.

In the tables below, the ZeroOcc column contains the number of atoms modelled with zero occupancy, the AltConf column contains the number of residues with at least one atom in alternate conformation and the Trace column contains the number of residues modelled with at most 2 atoms.

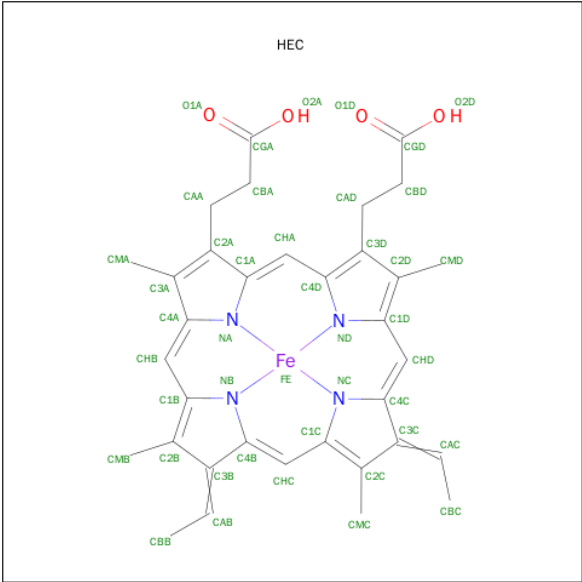
- Molecule 1 is a protein called CYTOCHROME P450 2C9.

Mol	Chain	Residues	Atoms					ZeroOcc	AltConf	Trace
1	A	461	Total	C	N	O	S	0	0	0
			3692	2384	616	669	23			
1	B	461	Total	C	N	O	S	0	0	0
			3692	2384	616	669	23			

There are 14 discrepancies between the modelled and reference sequences:

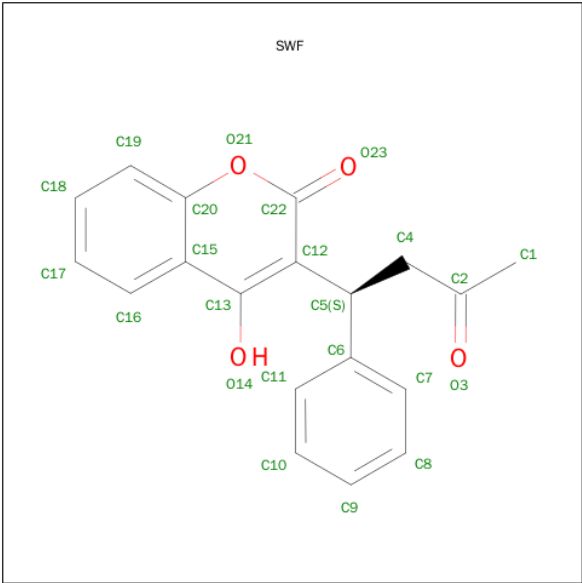
Chain	Residue	Modelled	Actual	Comment	Reference
A	206	GLU	LYS	ENGINEERED MUTATION	UNP P11712
A	215	VAL	ILE	ENGINEERED MUTATION	UNP P11712
A	216	TYR	CYS	ENGINEERED MUTATION	UNP P11712
A	220	PRO	SER	ENGINEERED MUTATION	UNP P11712
A	221	ALA	PRO	ENGINEERED MUTATION	UNP P11712
A	222	LEU	ILE	ENGINEERED MUTATION	UNP P11712
A	223	LEU	ILE	ENGINEERED MUTATION	UNP P11712
B	206	GLU	LYS	ENGINEERED MUTATION	UNP P11712
B	215	VAL	ILE	ENGINEERED MUTATION	UNP P11712
B	216	TYR	CYS	ENGINEERED MUTATION	UNP P11712
B	220	PRO	SER	ENGINEERED MUTATION	UNP P11712
B	221	ALA	PRO	ENGINEERED MUTATION	UNP P11712
B	222	LEU	ILE	ENGINEERED MUTATION	UNP P11712
B	223	LEU	ILE	ENGINEERED MUTATION	UNP P11712

- Molecule 2 is HEME C (three-letter code: HEC) (formula: $C_{34}H_{34}FeN_4O_4$).



Mol	Chain	Residues	Atoms					ZeroOcc	AltConf
2	A	1	Total 43	C 34	Fe 1	N 4	O 4	0	0
2	B	1	Total 43	C 34	Fe 1	N 4	O 4	0	0

- Molecule 3 is S-WARFARIN (three-letter code: SWF) (formula: C₁₉H₁₆O₄).



- Molecule 4 is water.

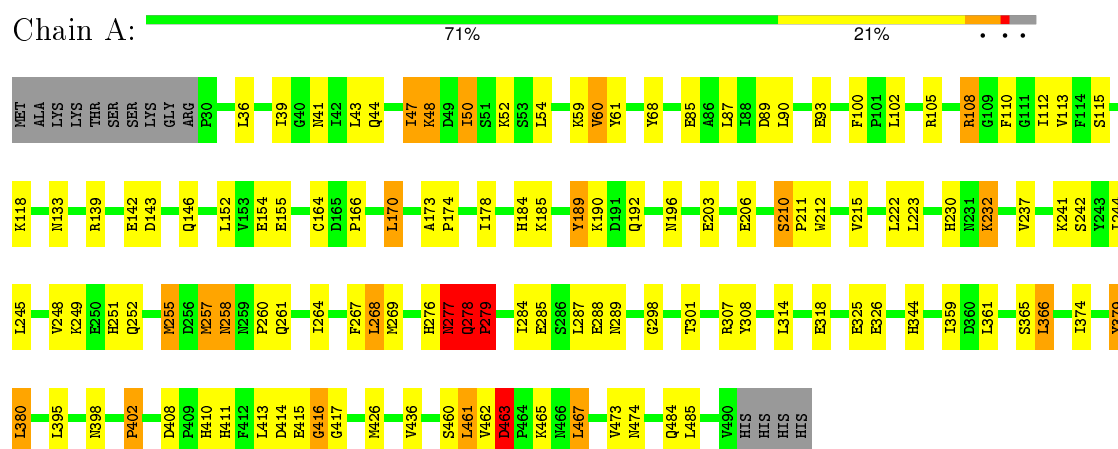
Mol	Chain	Residues	Atoms		ZeroOcc	AltConf
4	A	198	Total 198	O 198	0	0
4	B	225	Total 225	O 225	0	0

3 Residue-property plots

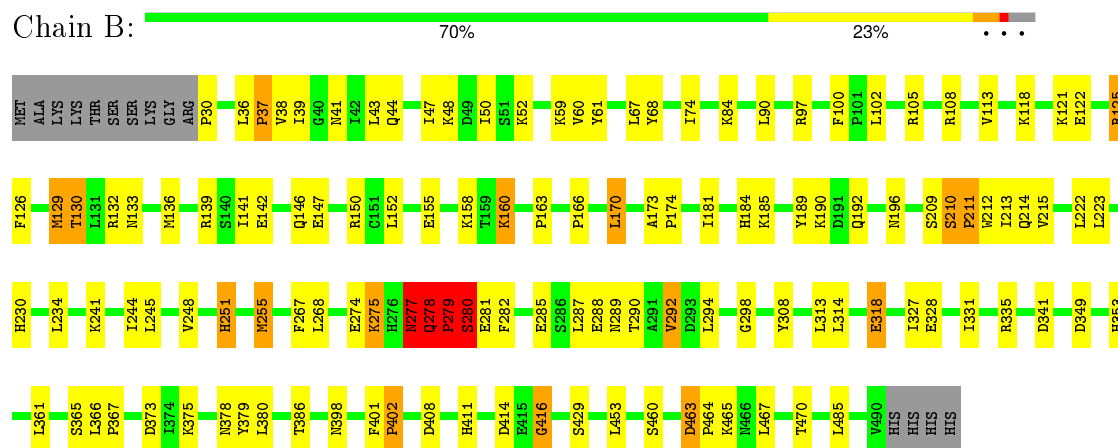
These plots are drawn for all protein, RNA and DNA chains in the entry. The first graphic for a chain summarises the proportions of errors displayed in the second graphic. The second graphic shows the sequence view annotated by issues in geometry and electron density. Residues are color-coded according to the number of geometric quality criteria for which they contain at least one outlier: green = 0, yellow = 1, orange = 2 and red = 3 or more. A red dot above a residue indicates a poor fit to the electron density ($RSRZ > 2$). Stretches of 2 or more consecutive residues without any outlier are shown as a green connector. Residues present in the sample, but not in the model, are shown in grey.

Note EDS was not executed.

• Molecule 1: CYTOCHROME P450 2C9



• Molecule 1: CYTOCHROME P450 2C9



4 Data and refinement statistics

Xtriage (Phenix) and EDS were not executed - this section will therefore be incomplete.

Property	Value	Source
Space group	P 3 2 1	Depositor
Cell constants a, b, c, α , β , γ	164.76 Å 164.76 Å 110.76 Å 90.00° 90.00° 120.00°	Depositor
Resolution (Å)	50.00 – 2.55	Depositor
% Data completeness (in resolution range)	99.9 (50.00-2.55)	Depositor
R_{merge}	0.07	Depositor
R_{sym}	(Not available)	Depositor
Refinement program	CNX 2002	Depositor
R, R_{free}	0.225 , 0.257	Depositor
Estimated twinning fraction	No twinning to report.	Xtriage
Total number of atoms	7939	wwPDB-VP
Average B, all atoms (Å ²)	45.0	wwPDB-VP

5 Model quality [i](#)

5.1 Standard geometry [i](#)

Bond lengths and bond angles in the following residue types are not validated in this section: SWF, HEC

The Z score for a bond length (or angle) is the number of standard deviations the observed value is removed from the expected value. A bond length (or angle) with $|Z| > 5$ is considered an outlier worth inspection. RMSZ is the root-mean-square of all Z scores of the bond lengths (or angles).

Mol	Chain	Bond lengths		Bond angles	
		RMSZ	# $ Z > 5$	RMSZ	# $ Z > 5$
1	A	0.75	6/3783 (0.2%)	0.89	14/5119 (0.3%)
1	B	0.67	1/3783 (0.0%)	0.85	10/5119 (0.2%)
All	All	0.71	7/7566 (0.1%)	0.87	24/10238 (0.2%)

Chiral center outliers are detected by calculating the chiral volume of a chiral center and verifying if the center is modelled as a planar moiety or with the opposite hand. A planarity outlier is detected by checking planarity of atoms in a peptide group, atoms in a mainchain group or atoms of a sidechain that are expected to be planar.

Mol	Chain	#Chirality outliers	#Planarity outliers
1	A	0	3
1	B	0	2
All	All	0	5

The worst 5 of 7 bond length outliers are listed below:

Mol	Chain	Res	Type	Atoms	Z	Observed(Å)	Ideal(Å)
1	A	279	PRO	N-CD	13.92	1.67	1.47
1	A	278	GLN	C-O	7.68	1.38	1.23
1	A	277	ASN	C-O	6.64	1.35	1.23
1	B	278	GLN	N-CA	-5.71	1.34	1.46
1	A	279	PRO	N-CA	5.36	1.56	1.47

The worst 5 of 24 bond angle outliers are listed below:

Mol	Chain	Res	Type	Atoms	Z	Observed(°)	Ideal(°)
1	B	279	PRO	CA-N-CD	-18.90	85.03	111.50
1	A	279	PRO	CA-N-CD	-13.83	92.14	111.50
1	B	278	GLN	C-N-CD	-13.59	90.70	120.60
1	A	277	ASN	CA-C-N	-13.09	88.41	117.20

Continued on next page...

Continued from previous page...

Mol	Chain	Res	Type	Atoms	Z	Observed(°)	Ideal(°)
1	A	277	ASN	N-CA-C	-12.93	76.10	111.00

There are no chirality outliers.

All (5) planarity outliers are listed below:

Mol	Chain	Res	Type	Group
1	A	277	ASN	Mainchain
1	A	278	GLN	Mainchain,Peptide
1	B	278	GLN	Peptide
1	B	279	PRO	Peptide

5.2 Too-close contacts

In the following table, the Non-H and H(model) columns list the number of non-hydrogen atoms and hydrogen atoms in the chain respectively. The H(added) column lists the number of hydrogen atoms added and optimized by MolProbity. The Clashes column lists the number of clashes within the asymmetric unit, whereas Symm-Clashes lists symmetry related clashes.

Mol	Chain	Non-H	H(model)	H(added)	Clashes	Symm-Clashes
1	A	3692	0	3720	73	0
1	B	3692	0	3720	72	0
2	A	43	0	32	5	0
2	B	43	0	32	3	0
3	A	23	0	16	3	0
3	B	23	0	16	5	0
4	A	198	0	0	4	0
4	B	225	0	0	1	0
All	All	7939	0	7536	147	0

The all-atom clashscore is defined as the number of clashes found per 1000 atoms (including hydrogen atoms). The all-atom clashscore for this structure is 10.

The worst 5 of 147 close contacts within the same asymmetric unit are listed below, sorted by their clash magnitude.

Atom-1	Atom-2	Interatomic distance (Å)	Clash overlap (Å)
1:B:125:ARG:HG3	1:B:125:ARG:HH11	0.89	1.03
1:B:278:GLN:HG2	1:B:278:GLN:O	1.23	1.03
1:B:278:GLN:CG	1:B:278:GLN:O	2.10	0.97
1:A:41:ASN:HD22	1:A:68:TYR:H	1.11	0.96
1:B:41:ASN:HD22	1:B:68:TYR:H	1.00	0.96

There are no symmetry-related clashes.

5.3 Torsion angles [i](#)

5.3.1 Protein backbone [i](#)

In the following table, the Percentiles column shows the percent Ramachandran outliers of the chain as a percentile score with respect to all X-ray entries followed by that with respect to entries of similar resolution.

The Analysed column shows the number of residues for which the backbone conformation was analysed, and the total number of residues.

Mol	Chain	Analysed	Favoured	Allowed	Outliers	Percentiles	
1	A	459/475 (97%)	426 (93%)	23 (5%)	10 (2%)	8	12
1	B	459/475 (97%)	423 (92%)	26 (6%)	10 (2%)	8	12
All	All	918/950 (97%)	849 (92%)	49 (5%)	20 (2%)	8	12

5 of 20 Ramachandran outliers are listed below:

Mol	Chain	Res	Type
1	A	279	PRO
1	A	230	HIS
1	A	258	ASN
1	A	402	PRO
1	B	230	HIS

5.3.2 Protein sidechains [i](#)

In the following table, the Percentiles column shows the percent sidechain outliers of the chain as a percentile score with respect to all X-ray entries followed by that with respect to entries of similar resolution.

The Analysed column shows the number of residues for which the sidechain conformation was analysed, and the total number of residues.

Mol	Chain	Analysed	Rotameric	Outliers	Percentiles	
1	A	416/428 (97%)	371 (89%)	45 (11%)	8	14
1	B	416/428 (97%)	367 (88%)	49 (12%)	6	11
All	All	832/856 (97%)	738 (89%)	94 (11%)	7	12

5 of 94 residues with a non-rotameric sidechain are listed below:

Mol	Chain	Res	Type
1	A	465	LYS
1	B	67	LEU
1	B	373	ASP
1	A	467	LEU
1	B	43	LEU

Some sidechains can be flipped to improve hydrogen bonding and reduce clashes. 5 of 35 such sidechains are listed below:

Mol	Chain	Res	Type
1	A	411	HIS
1	B	44	GLN
1	B	368	HIS
1	A	418	ASN
1	A	474	ASN

5.3.3 RNA [i](#)

There are no RNA molecules in this entry.

5.4 Non-standard residues in protein, DNA, RNA chains [i](#)

There are no non-standard protein/DNA/RNA residues in this entry.

5.5 Carbohydrates [i](#)

There are no carbohydrates in this entry.

5.6 Ligand geometry [i](#)

4 ligands are modelled in this entry.

In the following table, the Counts columns list the number of bonds (or angles) for which Mogul statistics could be retrieved, the number of bonds (or angles) that are observed in the model and the number of bonds (or angles) that are defined in the chemical component dictionary. The Link column lists molecule types, if any, to which the group is linked. The Z score for a bond length (or angle) is the number of standard deviations the observed value is removed from the expected value. A bond length (or angle) with $|Z| > 2$ is considered an outlier worth inspection. RMSZ is the root-mean-square of all Z scores of the bond lengths (or angles).

Mol	Type	Chain	Res	Link	Bond lengths			Bond angles		
					Counts	RMSZ	# Z > 2	Counts	RMSZ	# Z > 2
2	HEC	A	501	1	24,50,50	1.48	3 (12%)	19,82,82	2.33	5 (26%)
3	SWF	A	502	-	24,25,25	2.84	15 (62%)	23,35,35	2.62	6 (26%)
2	HEC	B	501	1	24,50,50	1.84	6 (25%)	19,82,82	1.59	4 (21%)
3	SWF	B	502	-	24,25,25	2.87	16 (66%)	23,35,35	2.25	4 (17%)

In the following table, the Chirals column lists the number of chiral outliers, the number of chiral centers analysed, the number of these observed in the model and the number defined in the chemical component dictionary. Similar counts are reported in the Torsion and Rings columns. '-' means no outliers of that kind were identified.

Mol	Type	Chain	Res	Link	Chirals	Torsions	Rings
2	HEC	A	501	1	-	0/6/54/54	0/0/8/8
3	SWF	A	502	-	-	0/12/12/12	0/3/3/3
2	HEC	B	501	1	-	0/6/54/54	0/0/8/8
3	SWF	B	502	-	-	0/12/12/12	0/3/3/3

The worst 5 of 40 bond length outliers are listed below:

Mol	Chain	Res	Type	Atoms	Z	Observed(Å)	Ideal(Å)
2	B	501	HEC	CBB-CAB	-4.39	1.31	1.49
2	A	501	HEC	CBB-CAB	-4.18	1.32	1.49
2	A	501	HEC	CBC-CAC	-3.75	1.34	1.49
2	B	501	HEC	CBC-CAC	-3.71	1.34	1.49
3	B	502	SWF	O23-C22	-2.09	1.19	1.23

The worst 5 of 19 bond angle outliers are listed below:

Mol	Chain	Res	Type	Atoms	Z	Observed(°)	Ideal(°)
3	A	502	SWF	C12-C5-C6	-8.90	99.90	111.58
2	A	501	HEC	CAA-C2A-C1A	-7.87	118.47	127.01
3	B	502	SWF	C12-C5-C6	-7.70	101.47	111.58
3	A	502	SWF	C19-C20-C15	-3.44	119.37	123.11
3	B	502	SWF	C19-C20-C15	-3.32	119.50	123.11

There are no chirality outliers.

There are no torsion outliers.

There are no ring outliers.

4 monomers are involved in 16 short contacts:

Mol	Chain	Res	Type	Clashes	Symm-Clashes
2	A	501	HEC	5	0
3	A	502	SWF	3	0
2	B	501	HEC	3	0
3	B	502	SWF	5	0

5.7 Other polymers [i](#)

There are no such residues in this entry.

5.8 Polymer linkage issues [i](#)

There are no chain breaks in this entry.

6 Fit of model and data [i](#)

6.1 Protein, DNA and RNA chains [i](#)

EDS was not executed - this section will therefore be empty.

6.2 Non-standard residues in protein, DNA, RNA chains [i](#)

EDS was not executed - this section will therefore be empty.

6.3 Carbohydrates [i](#)

EDS was not executed - this section will therefore be empty.

6.4 Ligands [i](#)

EDS was not executed - this section will therefore be empty.

6.5 Other polymers [i](#)

EDS was not executed - this section will therefore be empty.